

# **Greek, Roman and Important Byzantine Coins**

**Including property from**

**The Foreign Ambassador Collection formed mainly in the 1950s and 1960s**

**To be sold by auction at:**

Morton & Eden Ltd  
Nash House  
St George Street  
London  
W1S 2FQ

**Day of Sale:**

Thursday 5 May 2022  
at 10.30 am and 2.00 pm

**Please note that room bidding is not available at this sale. Clients are welcome to participate online, by telephone, or by leaving commission bids as usual.  
There is no additional charge for bidding by any of these methods at this auction.**

**Viewing:**

Nash House, St George Street, London W1S 2FQ

**Viewing for this auction is by prior appointment only.**

**Catalogue no. 115**

**Price £15**

**Enquiries:**

Menelaos Danellis, Tom Eden

**Cover illustrations:**

Lot 348 (front); lot 83 (back); lot 101 (inside front); lot 193 (inside back)

**MORTON & EDEN**

Nash House, St George Street, London W1S 2FQ

Tel.: +44 (0)20 7493 5344 Email: [info@mortonandeden.com](mailto:info@mortonandeden.com) Website: [www.mortonandeden.com](http://www.mortonandeden.com)

**This auction is conducted by Morton & Eden Ltd.  
in accordance with our Conditions of Business  
printed at the back of this catalogue.**

**Because of the ongoing COVID-19 pandemic  
it may become necessary to revise arrangements  
for this auction at short notice.**

**Clients are strongly advised to check our website  
and to contact us directly in case of any changes.**

### **Online Bidding**

**This auction can be viewed online at [www.invaluable.com](http://www.invaluable.com), [www.numisbids.com](http://www.numisbids.com), [www.bidder.com](http://www.bidder.com) and [www.sixbid.com](http://www.sixbid.com)**

Morton & Eden Ltd offers live online bidding via **[www.invaluable.com](http://www.invaluable.com)** and **[www.bidder.com](http://www.bidder.com)**

This facility is provided without additional charge on the understanding that Morton & Eden Ltd shall not be responsible for errors or failures to execute internet bids for reasons including but not limited to:

- i) a loss of internet connection by either party;
- ii) a breakdown or other problems with the online bidding software;
- iii) a breakdown or other problems with your computer, system or internet connection.

All online bids remain subject to our standard Conditions of Business.

## Important Information for Buyers

All lots are offered subject to Morton & Eden Ltd's Conditions of Business and to reserves.

**Estimates** are published as a guide only and are subject to review. The hammer price of a lot may well be higher or lower than the range of figures given and there are no fixed starting prices.

**A Buyer's Premium of 20%** is applicable to all lots in this sale and is subject to VAT at the standard rate (currently 20%). Unless otherwise indicated, lots are offered for sale under the Auctioneer's Margin Scheme.

**VAT** may be refunded to buyers from outside the UK under certain circumstances. Evidence of export must be produced within three months of the date of sale.

Morton & Eden Ltd can obtain quotations for the shipping of purchases and assist in applying for export licences. However, buyers are reminded that it is their responsibility to comply with UK export regulations and with any local import requirements.

Morton & Eden Ltd will be pleased to execute bids on behalf of those clients unable to attend the sale in person, subject to our Conditions of Business. Lots will always be purchased as cheaply as possible, depending on any other bids and reserves. This service is offered free of charge.

**Written bids** should be submitted **before 6pm on the day prior to the sale.**

## Payment Instructions

**Payment must be made in pounds sterling** and is due at the conclusion of the sale and before purchases can be released.

### **Bank Transfers (recommended):**

Please quote your name and invoice number with the instructions to your bank.

### **UK debit card**

Clients wishing to pay amounts no greater than £500 by **credit card** or by **foreign debit card** are requested to contact us in advance for approval.

**Cheques and banker's drafts** should be drawn on a UK bank. We require seven days to clear cheques unless special arrangements have been made in advance of the sale. **Please note foreign cheques will not be accepted.**

**Sterling Cash.** Subject to statutory limits.

## **Order of Sale**

**Thursday 5 May 2022**

**Starting at 10.30 am**

Ancient Greek Coins	lots 1-148
Aksumite Coins	lots 149-152
Ancient British Coins	lots 153-173
Roman Coins	lots 174-249

**Starting at 2.00 pm**

Byzantine Coins	lots 250-518
The Empire of Nicaea	lots 473-477
The Restored Byzantine Empire	lots 478-513
The Empire of Trebizond	lots 514-515
Miscellaneous	lots 516-518

**Please note that room bidding is not available at this sale. Clients are welcome to participate online, by telephone, or by leaving commission bids as usual.**

**There is no additional charge for bidding by any of these methods at this auction.**

**Illustrations of every lot included in this sale can be found online at [www.mortonandeden.com](http://www.mortonandeden.com), [www.bidder.ch](http://www.bidder.ch) and [www.invaluable.com](http://www.invaluable.com)**



**Thursday 5 May 2022**  
**Starting at 10.00 am**  
**GREEK COINS**



**1**  
**Sicily, Syracuse, tetradrachm, c. 460-440 BC**, quadriga driven right; pistrich below, *rev.*, head of Arethusa right surrounded by four dolphins, 16.98g (Boehringer 516; SNG ANS 165, *same dies*), *toned, good very fine* £700-1,000

Ex European Ambassador Collection, formed in the 1950s and 1960s.



**2**  
**Sicily, Syracuse, Agathokles (317-289), electrum 50 litrai**, laureate head of Apollo left; lamp behind head, *rev.*, tripod, 3.53g (Jenkins O12/R7; SNG ANS 621-631 var.), *good very fine* £500-700

Ex European Ambassador Collection, formed in the 1950s and 1960s.



**3**  
**Macedon, Akanthos, tetradrachm, c. 480 BC**, lion right attacking bull left, *rev.*, quadripartite incuse square, 17.28g (cf. Desneux 34; cf. SNG ANS 6-10), *test cut, good very fine* £400-500

Ex European Ambassador Collection, formed in the 1950s and 1960s.



**4**  
**Kings of Macedon, Archelaos (413-399 BC), stater**, diademed head of Apollo right, *rev.*, horse standing right with trailing rein, 10.97g (cf. Westermark O39/R59), *scuff on obverse, good very fine* £700-1,000

Ex European Ambassador Collection, formed in the 1950s and 1960s.

**5**  
**Kings of Macedon, Archelaos (413-399 BC), stater**, diademed head of Apollo right, *rev.*, horse standing right with trailing rein, 10.66g (cf. Westermark O24/R50), *very fine* £500-700

Ex European Ambassador Collection, formed in the 1950s and 1960s.



6  
**Kings of Macedon, Philip II (359-336 BC), gold stater, Pella, c. 340-328 BC**, laureate head of Apollo right, *rev.*, charioteer driving biga right; below horses, thunderbolt, 8.58g (cf. Le Rider 60ff.), *good very fine* £2,000-2,500

Ex European Ambassador Collection, formed in the 1950s and 1960s.



7  
**Kings of Macedon, Philip II (359-336 BC), gold stater, Pella, c. 340-328 BC**, laureate head of Apollo right, *rev.*, charioteer driving biga right; below horses, trident head, 8.57g (cf. Le Rider 227ff.), *very fine* £1,800-2,200

Ex European Ambassador Collection, formed in the 1950s and 1960s.



8  
**Kings of Macedon, Philip II (359-336 BC), gold stater, Pella, c. 323-315 BC**, laureate head of Apollo right, *rev.*, charioteer driving biga right; below horses, Boeotian shield, 8.59g (cf. Le Rider 600-607), *good very fine, rare* £2,000-2,500

Ex European Ambassador Collection, formed in the 1950s and 1960s. Unlike the dies for this issue illustrated in Le Rider, the horses here are rearing up in dramatic fashion over the Boeotian shield.



9  
**Kings of Macedon, Philip II (359-336 BC), gold stater, Amphipolis, c. 340-328 BC**, laureate head of Apollo right, *rev.*, charioteer driving biga right; below horses, ear of grain, 8.60g (cf. Le Rider 6), *good very fine* £2,000-2,500

Ex European Ambassador Collection, formed in the 1950s and 1960s.





10



11



12

10

**Kings of Macedon, Philip II (359-336 BC), tetradrachm, Pella, c. 348-328 BC**, laureate head of Zeus right, *rev.*, Philip on horseback left, raising right hand; below horse, head of Helios, 14.38g (Le Rider 137, *same obverse die*), *field tooled on reverse*, *very fine* £300-400

Ex European Ambassador Collection, formed in the 1950s and 1960s.

11

**Kings of Macedon, Philip II (359-336 BC), tetradrachm, Pella, c. 342-336 BC**, laureate head of Zeus right, *rev.*, nude youth on horseback right, clasp ing reins and holding long palm branch; below horse, thunderbolt; *in ex.*, N, 14.51g (Le Rider 218ff), *about extremely fine* £1,500-2,000

Ex European Ambassador Collection, formed in the 1950s and 1960s.

12

**Kings of Macedon, Philip II (359-336 BC), tetradrachm, Amphipolis, c. 323-315 BC**, laureate head of Zeus right, *rev.*, nude youth on horseback right, clasp ing reins and holding long palm branch; below horse, ΠΑ monogram and Λ, 14.32g (Le Rider pl. 45, 5), *good very fine* £300-400

Ex European Ambassador Collection, formed in the 1950s and 1960s.



13

**Kings of Macedon, Alexander III, the Great (336-323 BC), gold stater, Amphipolis, c. 330-320 BC**, helmeted head of Athena right, *rev.*, Nike standing left holding wreath and stylis; in field, trident head, 8.61g (Price 175), *good very fine* £2,000-2,500

Ex European Ambassador Collection, formed in the 1950s and 1960s.



14

**Kings of Macedon, Alexander III, the Great (336-323 BC), gold stater, Amphipolis, c. 330-320 BC**, helmeted head of Athena right, *rev.*, Nike stading left holding wreath and stylis; in field, Boeotian shield, 8.61g (Price 176), *with edge and other marks (ex-mount)*, *good very fine* £1,800-2,200

Ex European Ambassador Collection, formed in the 1950s and 1960s.



15

**Kings of Macedon, Alexander III, the Great (336-323 BC), gold stater, Lampsakos, c. 310-301 BC**, helmeted head of Athena right, *rev.*, Nike standing left holding wreath and stylis; in field, KI and monogram/letter off flan, 8.59g (Price 1396ff.), *some minor obverse marks, extremely fine* £2,500-3,000

Ex European Ambassador Collection, formed in the 1950s and 1960s.



16

**Kings of Macedon, Alexander III, the Great (336-323 BC), gold stater, Magnesia ad Macandrum, c. 325-323 BC**, helmeted head of Athena right, *rev.*, Nike standing left holding wreath and stylis; in field, facing ram's head and monogram, 8.63g (Price 1920), *light field scratches, very fine* £1,500-2,000

Ex European Ambassador Collection, formed in the 1950s and 1960s.



17

**Kings of Macedon, Alexander III, the Great (336-323 BC), gold stater, Miletus, c. 323-319 BC**, helmeted head of Athena right, *rev.*, Nike standing left holding wreath and stylis; in field, on right, corn-ear and double-axe, 8.58g (Price 2095; SNG Copenhagen 633), *very fine* £2,000-2,500

Ex European Ambassador Collection, formed in the 1950s and 1960s.



18

**Kings of Macedon, Alexander III, the Great (336-323 BC), gold stater, Kition, Cyprus, c. 325-320 BC**, helmeted head of Athena right, *rev.*, Nike standing left holding wreath and stylis; in field, KT monogram, 8.60g (Price 3104), *about extremely fine* £2,500-3,000

Ex European Ambassador Collection, formed in the 1950s and 1960s.

All lots are subject to a Buyer's Premium of 20% on the hammer price plus VAT as appropriate. See our Conditions of Business for further details.





19

**Kings of Macedon, Alexander III, the Great (336-323 BC), gold stater, Sidon, dated 321-320 BC**, helmeted head of Athena right, *rev.*, Nike standing left holding wreath and stylis; in field, N (year 13), 8.59g (Price 3500), *very fine*  
£2,000-2,500

Ex European Ambassador Collection, formed in the 1950s and 1960s.



20

**Kings of Macedon, Alexander III, the Great (336-323 BC), gold stater, Babylon, c. 323-317 BC**, helmeted head of Athena right; M behind, *rev.*, Nike standing left holding wreath and stylis; in field, AY, 8.60g (Price 3691), *good extremely fine and well centred*  
£3,000-4,000

Ex European Ambassador Collection, formed in the 1950s and 1960s.



21

**Kings of Macedon, Alexander III, the Great (336-323 BC), gold stater, Babylon c. 317-311 BC**, helmeted head of Athena right, *rev.*, Nike standing left holding wreath and stylis; in field, ΘΕ and monogram in wreath, 8.58g (Price 3709), *about extremely fine*  
£2,000-2,500

Ex European Ambassador Collection, formed in the 1950s and 1960s.



22



23

22

**Kings of Macedon, Alexander III, the Great (336-323 BC), tetradrachm, Amphipolis, c. 315-294 BC**, head of Herakles right wearing lion-skin headdress, *rev.*, Zeus seated left; in field, Λ and race-torch; monogram below seat, 17.18g (Price 447), *good very fine*  
£200-250

Ex European Ambassador Collection, formed in the 1950s and 1960s.

23

**Kings of Macedon, Alexander III, the Great (336-323 BC), tetradrachm, Chios, c. 270-220 BC**, head of Herakles right wearing lion-skin headdress, *rev.*, Zeus seated left; in field, sphinx and monogram in circle; Σ below seat, 16.71g (Price 2350; Bauslaugh, ANS MN 24, series 21), *toned, good very fine*  
£200-250

Ex European Ambassador Collection, formed in the 1950s and 1960s.

All lots are subject to a Buyer's Premium of 20% on the hammer price plus VAT as appropriate. See our Conditions of Business for further details.



24



25

24

**Kings of Macedon, Alexander III, the Great (336-323 BC), tetradrachm, uncertain mint, possibly Side, c. 325-320 BC**, head of Herakles right wearing lion-skin headdress, *rev.*, Zeus seated left; in field, wreath; Δ below seat, 17.21g (Price 2949), *slight double striking on reverse, otherwise extremely fine* £600-800

Ex European Ambassador Collection, formed in the 1950s and 1960s.

25

**Kings of Macedon, Alexander III, the Great (336-323 BC), tetradrachm, Babylon, c. 317-311 BC**, head of Herakles right wearing lion-skin headdress, *rev.*, Zeus seated left; in field, monogram in wreath; H below seat, 17.12g (Price 3704), *some double striking on reverse, good very fine* £200-250

Ex European Ambassador Collection, formed in the 1950s and 1960s.

26

**Kings of Macedon, Alexander III (336-323 BC), posthumous tetradrachms (9), 2<sup>nd</sup> century BC**, mints of Mytilene (Price 1709), Colophon (Price 1845 var.), Aspendos (3, Price 2907, 2909 (2), all with Seleucid anchor countermarks), Chios (4, Price 2394, 2399, 2419, 2429); **Pamphylia, Side, tetradrachm, 2<sup>nd</sup> century BC**, with anchor countermark, *mainly fine to very fine* (10) £600-800



27

**Kings of Macedon, Philip III (323-317 BC), gold stater, Sidon, 318-317 BC**, helmeted head of Athena right, *rev.*, Nike standing left holding wreath and stylis; in field, Π (year 16), 8.58g (Price P176), *minor obverse flaws, extremely fine* £2,200-2,500

Ex European Ambassador Collection, formed in the 1950s and 1960s.



28

**Kings of Macedon, Philip III (323-317 BC), gold stater, Babylon**, helmeted head of Athena right, *rev.*, Nike standing left holding wreath and stylis; in field, wheel, monogram and N, 8.62g (Price P198), *obverse die flaws in field, good very fine* £2,000-2,200

Ex European Ambassador Collection, formed in the 1950s and 1960s.





29



30

29

**Kings of Macedon, Philip III (323-317 BC), tetradrachm, Babylon**, head of Herakles right wearing lion-skin headdress, *rev.*, Zeus seated left; in field, facing head of Helios; KY below seat, 16.39g (Price P205), *some porosity, good very fine* £200-250

Ex European Ambassador Collection, formed in the 1950s and 1960s.

30

**Kings of Macedon, Demetrios Poliorketes (294-288 BC), tetradrachm, Amphipolis, c. 292-291 BC**, diademed and horned head right, *rev.*, Poseidon seated left holding aplustre and trident; two monograms and Z in field, 17.20g (Newell 104, pl. IX, 12), *very fine* £600-800

Ex European Ambassador Collection, formed in the 1950s and 1960s.



31



32

31

**Kings of Macedon, Demetrios Poliorketes (294-288 BC), tetradrachm, Chalcis, c. 291-290 BC**, diademed and horned head right, *rev.*, Poseidon standing left with right foot on rock and holding trident, to left, monogram and small dolphin, 16.06g (Newell 146, pl. XV, 8), *areas of pitting, scuff on reverse, very fine* £250-300

Ex European Ambassador Collection, formed in the 1950s and 1960s.

32

**Kings of Macedon, Demetrios Poliorketes (294-288 BC), tetradrachm, Amphipolis, c. 290-289 BC**, diademed and horned head right, *rev.*, Poseidon standing left with right foot on rock and holding trident, flanked by monograms, 17.20g (Newell 116, pl. XI, 2-9), *a few knocks, otherwise very fine* £500-700

Ex European Ambassador Collection, formed in the 1950s and 1960s.



33

**Kings of Macedon, Antigonos Gonatas (c. 277-239 BC), tetradrachm**, bust of Pan left in centre of Macedonian shield, *rev.*, Athena Alkidemos advancing left, flanked by Macedonian helmet and monogram, 17.03g (SNG Berry 354), *minor reverse marks, good very fine* £350-450

Ex European Ambassador Collection, formed in the 1950s and 1960s.



34

**Kings of Macedon, Antigonos Doson (c. 229-221 BC), tetradrachm**, bearded head of Poseidon right, *rev.*, naked Apollo holding bow and seated left on prow of galley; monogram below, 17.02g (SNG Berry 361), *unusually large flan, very fine*  
£1,000-1,500

Ex European Ambassador Collection, formed in the 1950s and 1960s.



35

35

**Kings of Macedon, Perseus (179-168 BC), tetradrachm**, diademed head right, *rev.*, eagle standing on thunderbolt and within oak wreath; three monograms in field, 15.44g (Mamroth 23), *small obverse cut, slight deposits, good very fine*  
£500-700

Ex European Ambassador Collection, formed in the 1950s and 1960s.



36

36

**Kings of Macedon, Perseus (179-168 BC), tetradrachm**, diademed head right, *rev.*, eagle standing on thunderbolt and within oak wreath; three monograms in field, 15.46g (Mamroth 25), *good very fine*  
£600-800

Ex European Ambassador Collection, formed in the 1950s and 1960s.



37

37

**Kings of Macedon, Perseus (179-168 BC), tetradrachm**, diademed head right, *rev.*, eagle standing on thunderbolt and within oak wreath; three monograms in field, 15.30g (Mamroth 22), *good very fine*  
£600-800

Ex European Ambassador Collection, formed in the 1950s and 1960s.



38

38

**Macedon as a Roman province, Aesillas, quaestor (95-70 BC), tetradrachm**, head of deified Alexander the Great right, *rev.*, money-chest, club and quaestor's chair, all within wreath, 16.62g (De Callatay dies of D61-R178a), *good very fine*  
£200-300

Ex European Ambassador Collection, formed in the 1950s and 1960s.





39

**Kings of Thrace, Lysimachus (323-281 BC), tetradrachm, Amphipolis, c. 288-281 BC**, deified head of Alexander the Great right, *rev.*, Athena seated left holding Nike; in left field, caduceus with handle; monogram in right field, 17.19g (Thompson 198), *extremely fine* £2,000-3,000

Ex European Ambassador Collection, formed in the 1950s and 1960s.



40

40

**Kings of Thrace, Lysimachus (323-281 BC), tetradrachm, Amphipolis, c. 288-281 BC**, deified head of Alexander the Great right, *rev.*, Athena seated left holding Nike; in left field, caduceus; monogram in right field, 17.27g (Thompson 191), *very fine* £220-250

Ex European Ambassador Collection, formed in the 1950s and 1960s.



41

41

**Kings of Thrace, Lysimachus (323-281 BC), tetradrachm, Sardes, c. 297-287 BC**, deified head of Alexander the Great right, *rev.*, Athena seated left holding Nike; KΩ monogram in field, 17.00g (Thompson 89), *very fine* £250-350

Ex European Ambassador Collection, formed in the 1950s and 1960s.



42

42

**Kings of Thrace, Lysimachus (323-281 BC), tetradrachm, Magnesia, c. 297-281 BC**, deified head of Alexander the Great right, *rev.*, Athena seated left holding Nike; monogram in field, 17.00g (Thompson 115), *some horn silver on reverse, toned, good very fine* £400-500

Ex European Ambassador Collection, formed in the 1950s and 1960s.



43

43

**Kings of Thrace, Lysimachus (323-281 BC), tetradrachm, Alexandria Troas (?), c. 297-281 BC**, deified head of Alexander the Great right, *rev.*, Athena seated left holding Nike; in left field, ΘΕΥ monogram, 17.01g (Thompson 154 var.), *good very fine* £400-500

Ex European Ambassador Collection, formed in the 1950s and 1960s.



44

**Kings of Thrace, Lysimachus (323-281 BC), tetradrachm, Pergamon, c. 287-282 BC**, deified head of Alexander the Great right, *rev.*, Athena seated left holding Nike; in left field, crescent and cultus image; in ex., monogram, 17.40g (Thompson 222), *some edge marks, about extremely fine* £700-1,000

Ex European Ambassador Collection, formed in the 1950s and 1960s.



45

45

**Kings of Thrace, Lysimachus (323-281 BC), tetradrachm, uncertain mint**, deified head of Alexander the Great right, *rev.*, Athena seated left holding Nike; in left field, K, 16.98g (Thompson -), *good very fine* £250-300

Ex European Ambassador Collection, formed in the 1950s and 1960s.



46

46

**Kings of Thrace, Lysimachus (323-281 BC), tetradrachm, Byzantium, 2nd century BC**, deified head of Alexander the Great right, *rev.*, Athena seated left holding Nike; in left field, monogram; BY on throne; trident below, 16.52g (SNG Copenhagen 1139 var.), *very fine* £200-250

Ex European Ambassador Collection, formed in the 1950s and 1960s.



47

47

**Kings of Thrace, Lysimachus (323-281 BC), tetradrachm, Byzantium, 150-100 BC**, deified head of Alexander the Great right, *rev.*, Athena seated left holding Nike; in left field, monogram; BY on throne; trident below, 16.90g (Marinescu issue 133), *large flan with crack, good very fine* £300-350

Ex European Ambassador Collection, formed in the 1950s and 1960s.



48

48

**Thrace, Abdera, drachm, c. 470 BC**, griffin seated left with raised foreleg; ΔΕΟ around top, *rev.*, quadripartite incuse square, 3.15g (May 93; ACNAC Rosen 132), *grey toned, about very fine* £200-300

Ex European Ambassador Collection, formed in the 1950s and 1960s.



49

49

**Thrace, Byzantium, tetradrachm, c. 387-340 BC**, bull standing left on dolphin, *rev.*, stippled quadripartite incuse square, 15.13g (SNG BM 2-7 var.), *good very fine* £250-350

Ex European Ambassador Collection, formed in the 1950s and 1960s.



50

50

**Thrace Byzantium, tetradrachm, c. 240-220 BC**, veiled head of Demeter, hair wreathed with corn, *rev.*, Poseidon seated right on rocks holding a trident; below, ΕΠΙ ΜΕΝΙΕΚΟΥ, 14.11g (SNG BM 59 = BMC 25), *obverse off centre, otherwise about extremely fine, rare* £500-700

Ex European Ambassador Collection, formed in the 1950s and 1960s.



51

51

**Island off Thrace, Thasos, stater, c. 500 BC**, ithyphallic satyr carrying off nymph, *rev.*, quadripartite incuse square, 9.44g (Svoronos pl. X, 3ff.), *porous surfaces, very fine* £250-300

Ex European Ambassador Collection, formed in the 1950s and 1960s.



52

52

**Island off Thrace, Thasos, drachm, c. 420 BC**, satyr carrying off nymph, *rev.*, quadripartite incuse square, 3.45g (Svoronos pl. X, 31), *very fine* £200-250

Ex European Ambassador Collection, formed in the 1950s and 1960s.



53

53

**Korkyra, stater, c. 300 BC**, cow suckling calf; star above, *rev.*, K-O-P and spearhead around double stellate pattern, 10.97g (SNG Copenhagen 157), *toned and very fine* £220-250

Ex European Ambassador Collection, formed in the 1950s and 1960s.



54

54

**Thessaly, Larissa, didrachm, c. 350-320 BC**, head of nymph Larissa facing three-quarters left, *rev.*, ΛΑΠΙ-Σ-ΑΙΩΝ, bridled horse walking right, 11.95g (Hermann pl. V, 1; BMC 55), *some pitting on obverse, very fine* £600-800

Ex European Ambassador Collection, formed in the 1950s and 1960s.

55

**Thessaly, Larissa, didrachms (3), 4th century BC**, facing head of nymph Larissa, *rev.*, horse feeding to right (2) and left (1), 5.84g, 6.06g, 6.11g, *the first tooled, others very fine or better* (3) £500-700

Ex European Ambassador Collection, formed in the 1950s and 1960s.





56

56

**Thessalian League (2nd-1st century BC), stater**, laureate head of Zeus right, *rev.*, Athena Itonia right, 6.20g (BMC 5), *good very fine* £120-150

Ex European Ambassador Collection, formed in the 1950s and 1960s.



57

57

**Elis, Olympia, drachm, c. 245-210 BC**, eagle tearing at hare held in talons, *rev.*, winged thunderbolt, 4.76g (Schwabacher group III), *very fine* £200-300

Ex European Ambassador Collection, formed in the 1950s and 1960s.



58

**Locris Opuntii, stater, c. 360s-338 B.C.**, wreathed head of Demeter left, *rev.*, ΟΠΟΝΤΙΩΝ, Ajax in fighting attitude with dagger and shield within which small griffin; Δ between legs; broken spear on ground, 12.01g (Morineau Humphris & Delbridge 129, O15A/R42), *the hair of Athena somewhat sharpened by tooling, otherwise good very fine* £1,500-2,000

Ex European Ambassador Collection, formed in the 1950s and 1960s.



59

59

**Boeotia, Thebes, stater, c. 379-368 BC**, Boeotian shield, *rev.*, ΔΑ-ΙΜ, amphora, 12.21g (BMC 126; BCD 523), *very fine* £300-400

Ex European Ambassador Collection, formed in the 1950s and 1960s.



60

60

**Boeotia, Federal Coinage, drachm, c. 250 BC**, facing head of Demeter, *rev.*, Poseidon standing right holding trident and dolphin, 5.05g (SNG Copenhagen 382; BCD 97), *good very fine* £300-400

Ex European Ambassador Collection, formed in the 1950s and 1960s.



61

61

**Boeotia, Federal Coinage, drachm, c. 225-171 BC**, laureate head of Poseidon right, *rev.*, Nike standing left, 4.82g (BMC 102 var.), *dark toned, good very fine* £120-150

Ex European Ambassador Collection, formed in the 1950s and 1960s.



62

**Attica, Athens, tetradrachm, c. 500-480 BC**, helmeted head of Athena right, *rev.*, owl standing right with head facing; olive spray behind, 16.79g (Seltman group G; Asyut group IV), *high points of owl flat, otherwise good very fine, entire crest of helmet visible* £1,200-1,500

Ex European Ambassador Collection, formed in the 1950s and 1960s.



63



64



65

63

**Attica, Athens, tetradrachm, c. 500-480 BC**, helmeted head of Athena right, *rev.*, owl standing right with head facing; olive spray behind, 17.10g (Seltman group G; Asyut group IV), *obverse rather weak but very fine, reverse extremely fine with some light deposit* £600-800

Ex European Ambassador Collection, formed in the 1950s and 1960s.

64

**Attica, Athens, tetradrachm, c. 500-480 BC**, helmeted head of Athena right, *rev.*, owl standing right with head facing; olive spray behind, 15.56g (cf. Seltman group G; Asyut group IV), *underweight, possibly plated, very fine* £300-400

Ex European Ambassador Collection, formed in the 1950s and 1960s.

65

**Attica, Athens, tetradrachm, c. 460 BC**, helmeted head of Athena right, *rev.*, owl standing right with head facing; olive spray behind, 17.03g (Starr group V), *very fine* £400-600

Ex European Ambassador Collection, formed in the 1950s and 1960s.



66



ex lot 64

66

**Attica, Athens, tetradrachm, c. 440s-420s BC**, helmeted head of Athena right, *rev.*, owl standing right with head facing; olive spray behind, 16.91g, *porous metal, good very fine* £300-500

Ex European Ambassador Collection, formed in the 1950s and 1960s.

67

**Attica, Athens, tetradrachms (3), c. 440-404 BC**, helmeted head of Athena right, *rev.*, owl standing right with head facing; olive spray behind, 17.18g, 17.17g, 17.21g, *very fine and better (3)* £800-1,200

Ex European Ambassador Collection, formed in the 1950s and 1960s.



ex lot 68



ex lot 69



ex lot 70

68

**Attica, Athens, tetradrachms (3), c. 440s-404 BC**, helmeted head of Athena right, *rev.*, owl standing right with head facing; olive spray behind, 17.20g, 17.21g, 17.21g, *first with obverse graffiti, mainly very fine to extremely fine* (3)

£800-1,200

Ex European Ambassador Collection, formed in the 1950s and 1960s.

69

**Attica, Athens, tetradrachms (3), c. 440s-404 BC**, helmeted head of Athena right, *rev.*, owl standing right with head facing; olive spray behind, 17.19g, 17.18g, 17.17g, *good very fine to extremely fine* (3)

£1,000-1,500

Ex European Ambassador Collection, formed in the 1950s and 1960s.

70

**Attica, Athens, tetradrachms (3), c. 440s-404 BC**, helmeted head of Athena right, *rev.*, owl standing right with head facing; olive spray behind, 17.14g, 17.20g, 17.14g, *very fine to extremely fine* (3)

£800-1,200

Ex European Ambassador Collection, formed in the 1950s and 1960s.

71

**Attica, Athens, tetradrachms (3), 4th century BC**, helmeted head of Athena right, *rev.*, owl standing right with head facing; olive spray behind, 17.20g, 17.21g, 17.16g, *the first two Eastern contemporary imitations, very fine or better* (3)

£600-800

Ex European Ambassador Collection, formed in the 1950s and 1960s.

72

**Attica, Athens, drachms (5), 5th century BC**, helmeted head of Athena right, *rev.*, owl standing right with head facing; olive spray behind, 3.77g, 4.17g, 4.27g, 4.16g, 4.27g, *the first a rare early issue but corroded, others later 5th century and generally very fine* (5)

£600-800

Ex European Ambassador Collection, formed in the 1950s and 1960s.

73

**Attica, Athens, triobol (1), obols (3), hemiobols (2), 5th century BC**, head of Athena, *rev.*, owl, 1.98g, 0.57g, 0.61g, 0.61g, 0.33g, 0.37g, *mainly fine* (6)

£300-400

Ex European Ambassador Collection, formed in the 1950s and 1960s.

74

**Attica, Athens, tetradrachms (5)**, comprising one of later 5th century BC, three of 4th century BC and a new style issue of 105/4 BC (Thompson 789), *mainly fine to very fine, the last with damage from old mount* (5)

£400-500



75

**Attica, Athens, tetradrachm, 133/2 BC**, head of Athena right, *rev.*, owl on amphora, 16.46 g (Thompson 376 var.), *almost very fine*

£120-150





76



77



78

76

**Attica, Athens, tetradrachm, 125/124 BC**, helmeted head of Athena right, *rev.*, owl on amphora, magistrates ΠΟΛΕΜΩΝ, ΑΛΚΕΤΗΣ and ΘΕΟΔΟΤΟΣ, 1st month; tripod in field, 16.54g (Thompson 461, *this piece illustrated on pl. 47*; BMC 493), *very fine* £200-250

Ex European Ambassador Collection, formed in the 1950s and 1960s.

77

**Attica Athens, drachm, c. 150-140 BC**, helmeted head of Athena right, *rev.*, owl on amphora; ear of corn in field, 4.08g (Thompson 151f, *this piece*), *flan crack, very fine, rare*, £250-300

Ex European Ambassador Collection, formed in the 1950s and 1960s.

78

**Attica, Athens, drachm, 131/130 BC**, magistrates ANTIOX, KAP and EYM, 4.11g, (Thompson 402e), *very fine*; and **hemidrachm, 137/136 BC**, magistrates MIKI and ΘΕΟΦΡΑ, 1.99g (Thompson 328), *fine* (2) £200-250

Ex European Ambassador Collection, formed in the 1950s and 1960s.



79



80



81

79

**Aegina, stater, c. 500 BC**, turtle, *rev.*, incuse punch, 12.20g (cf. Asyut group III), *very fine*

£250-300

Ex European Ambassador Collection, formed in the 1950s and 1960s.

80

**Aegina, drachm, c. 500 BC**, turtle, *rev.*, incuse punch, 6.10g (BMC 42-45), *very fine, rare*

£300-400

Ex European Ambassador Collection, formed in the 1950s and 1960s.

81

**Aegina, triobol and obols (2), c. 500 BC**, turtle, *rev.*, incuse punch, 3.02g, 1.03g, 0.88g (BMC 46ff and 57ff), *fine to very fine*; and **triobol, c. 350 BC**, tortoise, *rev.*, incuse with two pellets, 2.37g (BMC 171), *scratches, good fine* (4)

£200-300

Ex European Ambassador Collection, formed in the 1950s and 1960s.



82

**Aegina, stater, c. 450 BC**, turtle with row of dots down back, *rev.*, incuse of skew pattern, 12.37g (BMC 85ff), *good very fine* £1,500-2,000

Ex European Ambassador Collection, formed in the 1950s and 1960s.



83

**Aegina, stater, c. 350 BC**, tortoise, *rev.*, skew pattern incuse containing A, IΓ and dolphin, 11.78g (BMC 189), *good very fine* £2,000-2,500

Ex European Ambassador Collection, formed in the 1950s and 1960s.



84

**Aegina, stater, c. 350 BC**, tortoise flanked by A and I, *rev.*, skew pattern incuse containing N, I and dolphin, 12.14g (BMC 190-191), *very fine* £1,500-2,000

Ex European Ambassador Collection, formed in the 1950s and 1960s.



85



86

85

**Corinth, stater, c. 320 BC**, Pegasus flying left, *rev.*, helmeted head of Athena left; aegis behind, 8.52g (Ravel 1009), *very fine* £200-250

Ex European Ambassador Collection, formed in the 1950s and 1960s.

86

**Crete, Rhaukos, stater, c. 300-270 BC**, Poseidon standing beside horse, *rev.*, trident head, 11.21g (Le Rider pl. XXVI, 18, *same dies*; Svoronos pl. XXIX, 11, *same dies*), *some pitting, good fine, rare* £200-300

Ex European Ambassador Collection, formed in the 1950s and 1960s.

All lots are subject to a Buyer's Premium of 20% on the hammer price plus VAT as appropriate. See our Conditions of Business for further details.





87

**Paphlagonia, Amastris, stater, c. 285-250 BC**, head of Queen Amastris right wearing Phrygian headdress ornamented in star and wreath, *rev.*, Aphrodite seated left holding wreath-bearing Nike; rose on left and monogram below seat, 9.48g (Rec. Gen. pl. XVIII, 6), *good very fine* £1,000-1,500

Ex European Ambassador Collection, formed in the 1950s and 1960s.

88

**Paphlagonia, Sinope, drachm, c. 330-300 BC**, head of nymph Sinope left with aphlaston before, *rev.*, eagle on dolphin left; magistrate KΑΛΛΙΑ, 5.97g (SNG BM 1471), *extremely fine* £170-200

Ex European Ambassador Collection, formed in the 1950s and 1960s.



89

**Kings of Pontus, Mithradates VI (120-63 BC), tetradrachm, 76/75 BC**, diademed head right with flowing hair, *rev.*, stag feeding left, flanked by monograms and dated year 222; below, H (eighth month); all within ivy-wreath, 16.93g (Rec. Gen. p. 19 and pl. 3, 2), *extremely fine* £2,000-2,500

Ex European Ambassador Collection, formed in the 1950s and 1960s.



90



91



90

**Kings of Pontus, Mithradates VI (120-63 BC), tetradrachm, 74/73 BC**, diademed head right with flowing hair, *rev.*, stag feeding left; two monograms on right; dated on left, year 224; below, Γ (third month); all within ivy-wreath, 16.81g (Rec. Gen. p. 20 and pl. suppl. C, 5), *some obverse scratches, good very fine* £600-800

Ex European Ambassador Collection, formed in the 1950s and 1960s.

91

**Bithynia, Nicomedes III (127-94 BC), tetradrachm, 100/99 BC**, diademed head right, *rev.*, Zeus standing left with wreath and sceptre; dated year 198, 16.76g (Rec. Gen. p. 231), *good very fine, reverse slightly double struck* £200-250

Ex European Ambassador Collection, formed in the 1950s and 1960s.

All lots are subject to a Buyer's Premium of 20% on the hammer price plus VAT as appropriate. See our Conditions of Business for further details.



92



93

92

**Bithynia, Nicomedes IV (94-74 BC), tetradrachm, 89/88 BC**, diademed head right, *rev.*, Zeus standing left with wreath and sceptre; dated year 209, 14.54g (Rec. Gen. p. 232), *corrosion at edge, very fine* £150-200

Ex European Ambassador Collection, formed in the 1950s and 1960s.

93

**Bithynia, Nicomedes IV (94-74 BC), tetradrachm, 75/74 BC**, diademed head right, *rev.*, Zeus standing left with wreath and sceptre; dated year 223, 15.45g (Rec. Gen. p. 233; SNG von Aulock 269), *about extremely fine* £300-400

Ex European Ambassador Collection, formed in the 1950s and 1960s.



94



95

94

**Mysia, Kyzikos, electrum hekte, c. 500-450 BC**, lion's scalp on tunny fish, *rev.*, quadripartite incuse square, 2.66g (von Fritze 82; Rosen 459), *about very fine* £200-300

Ex European Ambassador Collection, formed in the 1950s and 1960s.

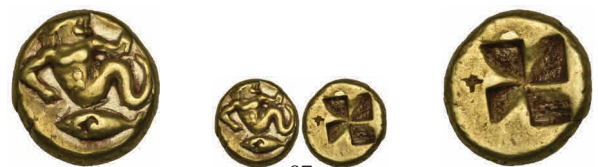
95

**Mysia, Kyzikos, electrum hekte, c. 500-450 BC**, hound running left on tunny fish, *rev.*, quadripartite incuse square, 2.63g (von Fritze 93), *scuff on reverse, very fine* £300-400

Ex European Ambassador Collection, formed in the 1950s and 1960s.



96



97

96

**Mysia, Kyzikos, electrum hekte, c. 500-450 BC**, nude male figure right holding knife and tunny fish, *rev.*, quadripartite incuse square, 2.64g (von Fritze 113; Boston 1480), *about extremely fine*, £350-450

Ex European Ambassador Collection, formed in the 1950s and 1960s.

97

**Mysia, Kyzikos, electrum hekte, c. 500-450 BC**, triton reclining left over tunny fish, *rev.*, quadripartite incuse square, 2.67g (von Fritze 126), *punch mark on fish, very fine* £250-300

Ex European Ambassador Collection, formed in the 1950s and 1960s.





98



99



100

98

**Mysia, Kyzikos, electrum hektes (2), c. 500-450 BC**, types of lion left on tunny fish and panther left on tunny fish, *rev.*, quadripartite incuse square, 2.57g and 2.69g (von Fritze 85 and 86), *second with punch mark, very fine* (2)

£400-600

Ex European Ambassador Collection, formed in the 1950s and 1960s.

99

**Mysia, Kyzikos, tetradrachm, c. 390-340 BC**, head of Kore Soteira left, *rev.*, lion's head left, tunny fish below; on right, club, 14.97g (SNG von Aulock 1217-19 var.), *rough surfaces, very fine*

£400-600

Ex European Ambassador Collection, formed in the 1950s and 1960s.

100

**Mysia, Lampsakos, drachm, c. 480-450 BC**, female janiform head, *rev.*, helmeted head of Athena left; monogram behind, 5.32g (BMC 10-22 var.), *obverse off centre, rough surfaces, very fine and rare*

£300-400

Ex European Ambassador Collection, formed in the 1950s and 1960s.



101

**Mysia, Lampsakos, tetradrachm, c. 100-70 BC**, bearded head of Priapos right, hair wreathed with ivy and with long locks of hair down neck, *rev.*, ΛΑΜΨΑ-[K]ΗΝΩΝ, Apollo Kitharoidos standing right holding lyre; to left, K; to right headdress of Isis; below, magistrate's name: ΑΝΔΡΟΜΑΧΟΥ ΤΟΥ ΜΗΝΟΦΙΛΟΥ, 16.22g (A. Ellis-Evans, *AJN* 32, 2020, pl. 19, 16, *same obverse die*), *some flat areas, otherwise about extremely fine and extremely rare*

£10,000-15,000

Ex European Ambassador Collection, formed in the 1950s and 1960s. In his 2020 article entitled *Late Hellenistic Tetradrachms of Parion and Lampsakos*, Ellis-Evans produced a corpus of known examples of this rare coinage but this and the following lot were not known to him. The present coin is only the second known tetradrachm issued by the magistrate Andromachos son of Menophilos and is from a different, previously unknown reverse die. The other example from this magistrate (same obverse die) is in The American Numismatic Society (ANS 1972.15.1). Ellis-Evans has downdated the coinage from the second to the first part of the first century BC on the evidence of overstrikes and other considerations.



102

**Mysia, Lampsakos, tetradrachm, c. 100-70 BC**, bearded head of Priapos right, hair wreathed with ivy and with long locks of hair down neck, *rev.*, ΛΑΜΨΑ-ΚΗΝΩΝ, Apollo Kitharoidos standing right holding lyre; to left, monogram; to right bow and arrow; below, magistrate's name: [ΔΗ]ΜΗΤΡΙΟΥ ΤΟΥ [ΔΑ]ΜΗΤΡΙΟΥ ΤΟΥ [ΜΕΙΚΑΛΟΥ], 16.71g (A. Ellis-Evans, *AJN* 32, 2020, pl. 19-20, 18-24, *same obverse die*), *slight tooling of the field before the head of Priapos, some reverse double striking, good very fine, very rare* £5,000-7,000

Ex European Ambassador Collection, formed in the 1950s and 1960s. Ellis-Evans recorded nine examples of this type issued by Demetrios son of Demetrios son of Meikalos all from the same obverse die as the present coin which, however is from a reverse die not known to him.



103

**Mysia, Pergamon, diobol, c. 300 BC**, head of Herakles in lion-skin headdress, *rev.*, Palladion, 1.41g (BMC 8), *extremely fine* £200-300

Ex European Ambassador Collection, formed in the 1950s and 1960s.

104

**Mysia, Parion, drachm, 5th century BC**, gorgoneion, *rev.*, cruciform pattern, 3.58g (BMC 1 ff.), *good very fine*; **Troas, Skepsis, hemidrachm, c. 450 BC**, forepart of Pegasus right, *rev.*, palm tree, 1.95g (SNG von Aulock 7642), *very fine*; **Ionian, Ephesos, drachm, 5th century BC**, bee, *rev.*, quadripartite incuse square, 3.28g (BMC 17), *about very fine* (3) £300-400

Ex European Ambassador Collection, formed in the 1950s and 1960s.



105

**Troas, Abydos, tetradrachm, c. 80-70 BC**, bust of Artemis right, bow and quiver at shoulder, *rev.*, ΑΒΥΔΗΝΩΝ, eagle standing right; in field before, dolphin on trident head; *in ex.*, ΞΑΝΘΙΠΠΙΟΥ, 15.96g (BMC 56; de Callatay, *Abydos sur Aesillas* (1996) D18, *this obverse die*), *traces of overstriking, very fine* £600-800

Ex European Ambassador Collection, formed in the 1950s and 1960s.





106

106

**Troas, Abydos, tetradrachm, c. 80-70 BC**, bust of Artemis right, bow and quiver at shoulder, *rev.*, ABYΔHNΩN, eagle standing right; in field before, star and head of Helios; *in ex.*, ΙΦΙΑΔΟΥ, 14.97g (de Callataj, Abydos sur Aesillas (1996) D32, *this obverse die*), *old scratch on cheek of Artemis, good very fine* £600-800

Ex European Ambassador Collection, formed in the 1950s and 1960s.



107

107

**Troas, Abydos, tetradrachm, c. 80-70 BC**, bust of Artemis right, bow and quiver at shoulder, *rev.*, ABYΔHNΩN, eagle standing right; in field before, star and head of Helios; *in ex.*, ΙΦΙΑΔΟΥ, 15.91g (de Callataj, Abydos sur Aesillas (1996) D34 and SNG von Aulock 1453, *this obverse die*), *some reverse double striking, very fine* £700-1,000

Ex European Ambassador Collection, formed in the 1950s and 1960s.



108

**Island off Troas, Tenedos, tetradrachm, c. 100-70 BC**, janiform head of Zeus and Hera, *rev.*, TENEΔΙΩΝ, double headed axe; to left, monogram and grapes; to right, owl; all in laurel-wreath. 16.27g (de Callataj D21/R?; BMC 28; SNG Copenhagen 523), *very fine and rare* £1,500-2,000

Ex European Ambassador Collection, formed in the 1950s and 1960s.



109

109

**Lesbos, Mytilene, electrum hektemete, c. 406 BC**, bearded head of Ares right wearing crested helmet adorned with leaping griffin, *rev.*, head of an amazon right wearing a Thracian leather helmet, 2.54g (Bodenstedt 65), *obverse extremely fine, reverse very fine, very rare* £1,000-1,500

Ex European Ambassador Collection, formed in the 1950s and 1960s.



110

110

**Lesbos, Mytilene, electrum hektemete, c. 396 BC**, laureate head of young Apollo right, *rev.*, female head right with long flowing hair, 2.55g (Bodenstedt 70; Boston 1707), *good style and good very fine* £600-800

Ex European Ambassador Collection, formed in the 1950s and 1960s.

All lots are subject to a Buyer's Premium of 20% on the hammer price plus VAT as appropriate. See our Conditions of Business for further details.



111

112

111

**Lesbos, Mytilene, electrum hekte, c. 364 BC**, helmeted head of Athena facing three-quarters right, *rev.*, head of Hermes right, petasos at back of neck, 2.56g (Bodenstedt 86; Boston 1733), *tiny unclear countermark on the petasos, reverse off centre, good very fine* £300-400

Ex European Ambassador Collection, formed in the 1950s and 1960s.

112

**Ionia, uncertain mint, electrum hemihekte, c. 600-550 BC**, horse's head left, *rev.*, incuse punch with cruciform design centred with cross, 1.19g (Weidauer 143, *same obverse die*; Triton XVI, 2013, 482, *same dies*), *very fine and very rare* £300-400

Ex European Ambassador Collection, formed in the 1950s and 1960s.



113



114

113

**Ionia, Phokaia, electrum twenty-fourth stater, c. 625-522 BC**, head of seal left, *rev.*, incuse punch, 0.64g (Bodenstedt Em. 2.2; BMC 9), *extremely fine* £150-200

Ex European Ambassador Collection, formed in the 1950s and 1960s.

114

**Ionia, Phokaia, electrum hekte, c. 477-388 BC**, female head left with long flowing hair, *rev.*, quadripartite incuse square, 2.56g (Bodenstedt 78, b/γ dies), *good very fine* £400-500

Ex European Ambassador Collection, formed in the 1950s and 1960s.



115



116

115

**Ionia, Phokaia, electrum hekte, c. 477-388 BC**, female head left, hair rolled, *rev.*, quadripartite incuse square, 2.56g (Bodenstedt 79; cf. CNG 99 (2015), 232, *same dies*), *good very fine, very rare* £800-1,200

Ex European Ambassador Collection, formed in the 1950s and 1960s.

116

**Ionia, attributed to Phokaia, trihemiobol, c. 625-522 BC**, female head left wearing sakkos, *rev.*, incuse punch, 1.30g (Rosen 596-7), *very fine*; **Uncertain Ionian, obol, early 6th century BC**, male head left, *rev.*, incuse punch, 0.42g (SNG von Aulock 1808), *very fine* (2) £150-200

Ex European Ambassador Collection, formed in the 1950s and 1960s.



117

**Lydia, under Persian rule, silver half stater, c. 546-510 BC**, foreparts of lion and bull face to face, *rev.*, two incuse punches, 5.34g (Rosen 664), *deposit on reverse, very fine* £500-600

Ex European Ambassador Collection, formed in the 1950s and 1960s.

118

**Karia, Kaunos, hemidrachms (2) and trihemiobols (2), c. 490-470 BC**, winged figure of Iris, *rev.*, griffin, 2.50g, 2.52g, 1.45g, 0.94g (cf. Konuk 30, 36, 46-50 and 51-54), *mainly fine* (4) £150-200

Ex European Ambassador Collection, formed in the 1950s and 1960s.

119

**Karia, Knidos, trihemiobols (2), c. 530-520 BC**, lion's head right, *rev.*, head of Aphrodite right, 1.82g, 1.46g (cf. Cahn 17), *fine to very fine* (2) £150-200

Ex European Ambassador Collection, formed in the 1950s and 1960s.



120

**Karia, Knidos, drachm, c. 449-411 BC**, forepart of lion right with open jaws, *rev.*, head of Aphrodite right, hair in ponytail down neck, 6.16g (Cahn 90), *very fine* £500-700

Ex European Ambassador Collection, formed in the 1950s and 1960s.



121

**Karia, Knidos, drachm, c. 411-394 BC**, forepart of lion right with open jaws, *rev.*, head of Aphrodite right, hair bound in ornated sphendone, 6.20g (Cahn 92), *extremely fine* £1,000-1,500

Ex European Ambassador Collection, formed in the 1950s and 1960s.



122

**Rhodes, tetradrachm, 4th century BC**, head of Helios facing three-quarters right, *rev.*, POΔ-ION, rose with buds and E in right field, 14.89g (cf. Hecatomnus hoard, CH IX, 225ff, A152, *this obverse die*), *nose of Helios flawed, some horn silver, otherwise very fine* £400-600

Ex European Ambassador Collection, formed in the 1950s and 1960s.





ex lot 123



124

123

**Rhodes, hemidrachm, c. 340-316 BC**, facing head of Helios, *rev.*, rose; grapes on left, 1.62g (Ashton 103), *edge damage, very fine*; **drachm, 1st century BC**, radiate head of Helios, *rev.*, rose; magistrate Agathokles, 4.31g (Ashton/Weiss 111), *good very fine*; **Rhodian mercenaries in Thessaly, drachm, c. 172-168 BC**, facing head of Helios, *rev.*, rose; magistrate Hermias, 2.64g (Price, *The Larissa Hoard* 1968, pl. 55, 247), *slight edge damage, extremely fine* (3)

£400-600

Ex European Ambassador Collection, formed in the 1950s and 1960s.

124

**Pamphylia, Aspendos, drachm, 420-360 BC**, horseman left, *rev.*, boar right, 5.23g (SNG von Aulock 4492), *countermark on reverse, about very fine*

£150-200

Ex European Ambassador Collection, formed in the 1950s and 1960s.



125



126

125

**Pamphylia, Aspendos, stater, c. 330-250 BC**, two wrestlers in combat; ΠΘ between legs, *rev.*, slinger right; to right, triskeles, club and FE, 10.49g (cf. SNG von Aulock 4572 var. – without FE), *toned and good very fine*

£300-400

Ex European Ambassador Collection, formed in the 1950s and 1960s.

126

**Cilicia, Kelenderis, stater, c. 425-400 BC**, nude rider seated sideways galloping left, *rev.*, goat kneeling left with head looking back, 10.80g (Kraay pl. 1, 7 *same dies*), *very fine*; **tetrobol, c. 425-400 BC**, similar type, 3.46g (SNG von Aulock 5633), *about very fine* (2)

£200-250

Ex European Ambassador Collection, formed in the 1950s and 1960s.



127



128

127

**Cilicia, Kelenderis, stater, c. 410-375 BC**, nude rider seated sideways galloping right, holding reins and whip, *rev.*, goat kneeling right with head looking back, above KEΛΕ, 10.58g (SNG Levante 25-26; SNG von Aulock 5630), *reverse off centre, good very fine*

£200-250

Ex European Ambassador Collection, formed in the 1950s and 1960s.

128

**Cilicia, Nagidos, stater, 4th century BC**, Aphrodite seated left holding phiale, Eros flying to crown her, *rev.*, Dionysus standing left, 10.07g (SNG Paris 28 var.), *very fine*

£180-220

Ex European Ambassador Collection, formed in the 1950s and 1960s.





129

**Cilicia, Tarsus, Datames (378-372 BC) stater**, Baal of Tarus seated right holding ear of corn and bunch of grapes; before, thymiaterion; below seat, lion seated right; behind B'LTRZ in Aramaic; all within crenelated wall, *rev.*, satrap seated right examining arrow; before, bow and winged solar disk; behind, TRDMW in Aramaic, 10.38g (SNG Lockett 3050; cf. SNG Levante 85-87 var.), *extremely fine* £2,000-3,000

Ex European Ambassador Collection, formed in the 1950s and 1960s.



130

130

**Cilicia, Tarsus, Datames (378-372 BC) stater**, Female head facing wearing necklace, *rev.*, bearded warrior bust right, wearing Athenian helmet decorated with palmette; to right, TRDMW in Aramaic, 10.51g (SNG Paris 270), *some porosity, about extremely fine* £700-1,000

Ex European Ambassador Collection, formed in the 1950s and 1960s.



131

131

**Cilicia, Tarsus, Mazaeus (361-344 BC), stater**, Baal of Tarsus seated left, head facing, holding eagle and sceptre, to right, B'LTRZ in Aramaic, *rev.*, lion attacking bull left; above MZDI in Aramaic, below, SM in Aramaic, 10.82g (SNG Levante 100), *almost extremely fine* £600-800

Ex European Ambassador Collection, formed in the 1950s and 1960s.



132

132

**Cilicia, Tarsus, Mazaeus (361-344 BC) stater**, Baal of Tarsus seated left, head facing, holding eagle and sceptre, to left, Aramaic W, to right, B'LTRZ in Aramaic, *rev.*, lion attacking bull left; above, MZDI in Aramaic; below SM in Aramaic, 10.91g (BMC 58; Sunrise 65), *very fine* £400-600

Ex European Ambassador Collection, formed in the 1950s and 1960s.



134

133

**Cyprus, Salamis, Evaogoras I (c. 411-374 BC), stater**, head of Herakles right, *rev.*, ram, 10.60g (SNG Copenhagen 47), *horn silver, very fine/fine*; **and third staters (2)**, Herakles seated on rocks, *rev.*, ram, 3.01g, 3.13g (SNG Copenhagen 49), *fine to very fine* (3) £350-450

Ex European Ambassador Collection, formed in the 1950s and 1960s.

134

**Seleucid Empire, Antiochus III (222-187 BC), tetradrachm, uncertain mint**, diademed head right, *rev.*, Apollo seated left on omphalos, holding arrow and bow; in left field, ΔI above eagle standing right; in right field, AP monogram, 16.59g, (SC-), *some deposit, good very fine, possibly an unrecorded variety* £200-300

Ex European Ambassador Collection, formed in the 1950s and 1960s.

All lots are subject to a Buyer's Premium of 20% on the hammer price plus VAT as appropriate. See our Conditions of Business for further details.



135

**Seleucid Empire, Antiochus III (222-187 BC), tetradrachm, Antioch, c. 204-197 BC**, diademed head right, *rev.*, Apollo seated left on omphalos, holding arrow and bow; anchor to left, 16.96g (SC 1044.3), *very fine* £150-200

Ex European Ambassador Collection, formed in the 1950s and 1960s.



136

**Seleucid Empire, Demetrius I (162-150 BC), tetradrachm, Antioch, 151/0 BC**, diademed head right, *rev.*, Tyche seated left holding sceptre and cornucopia; *in ex.*, BEP (year 162), 15.92g (SC 1641.8), *pitted, very fine* £100-150

Ex European Ambassador Collection, formed in the 1950s and 1960s.



137

**Phoenicia, Arados, drachms (2), 2nd century BC**, bee, *rev.*, stag; one dated 162-161 BC, the other dated 160-159 BC, 4.00g, 4.15g (cf. BMC 155 and 158), *the first very fine with edge marks, the second extremely fine with flan crack* (2) £200-300

Ex European Ambassador Collection, formed in the 1950s and 1960s.



138

**Ptolemaic Empire, Ptolemy II (283-246 BC), gold mnaieion (octadrachm), Alexandria, c. 252/1-250/49 BC**, diademed and veiled head of Arsinoe II right, lotus-sceptre over far shoulder; behind, Λ, *rev.*, ΑΡΣΙΝΟΗΣ ΦΙΛΑΔΕΛΦΟΥ, double cornucopia bound with royal diadem, 27.78g, die axis 11.00 (CPE 391; Svoronos 476, pl. 15, 15; Troxell pl. 7, 4 and p. 44), *minor marks, about extremely fine* £5,000-7,000



139

**Ptolemaic Empire, Ptolemy III (246-222 BC), bronze drachm, Alexandria**, diademed head of Zeus right, *rev.*, eagle standing left on thunderbolt; to left, filleted cornucopia; between eagle's legs, XP monogram, 42.5mm, 62.92g (CPE B395; Svoronos 964), *good very fine* £300-400





140



141

140

**Ptolemaic Empire, Ptolemy VI (180-164 BC), tetradrachm, Alexandria**, diademed head of Ptolemy I to right, *rev.*, eagle standing left on thunderbolt, 13.94g (Svoronos 1489, pl. 51, 1/2), *area of corrosion at 3 o'clock, old obverse scratch, good very fine* £150-200

Ex European Ambassador Collection, formed in the 1950s and 1960s.

141

**Ptolemaic Empire, Cleopatra VII (51-30 BC), bronze diobol, Alexandria**, diademed and draped bust right, *rev.*, eagle standing left on thunderbolt, cornucopia to left, Π to right, 18.76g (Svoronos 1871, pl. 63, 3/4), *with green patina, fine* £150-200

Ex European Ambassador Collection, formed in the 1950s and 1960s.

142

**Ptolemaic Empire, tetradrachms (7) and bronzes (22)**, various types, *some with corrosion, others cleaned, mainly fine or better* (29) £200-250



143

**Zeugitana, Carthage, electrum stater, c. 310-270 BC**, wreathed head of Tanit left, *rev.*, horse standing right, 7.37g (Jenkins and Lewis group V, 277, *same obverse die*), *die flaw at 7 o'clock on obverse, very fine* £1,800-2,200

144

**Greek silver (12)**, comprising tetradrachms of Philip II (*test cut*), Alexander III, Macedon 1st region, late Thasos (2); staters of Tarentum, Velia and Corinthian types (2); drachms of Eretria, and Larissa; hemidrachm of Phokis, *mainly fine, some better* (12) £300-400

145

**Miscellaneous**, Greek silver (30), Sasanian (3), Coriosolites billon (2), late Roman Ae (48), *mainly fair to fine* (83) £150-200

146

**Miscellaneous**, Greek bronzes (100), each coin identified, mostly in old BM envelopes (one Carthaginian bronze marked as "Ex British Museum"), in lower grades of condition, *poor to fine, a few better* (100) £150-200

147

**Miscellaneous**, silver (18), including Epaticcus unit (ABC 1346), Athens tetradrachm, Parthian drachms (2) of Vologases III (S. 78.6), Roman denarii (7) and antoninianus of Gordian III, billon tetradrachms (2) and mostly Roman bronzes (65) et infra (3), *mainly fair to fine* (88) £300-400

148

**Miscellaneous**, mainly Roman bronze coins (60) including Marcus Aurelius sestertius, *rev.*, emperor on horseback (cf. RIC 977), Allectus antoninianus, London mint follis of Maximian etc., *poor to fine* (60) £80-120

## AKSUMITE COINS



149

**Aksumite, Endybis (c. AD 300-310), gold unit**, bust right wearing headcloth flanked by corn-ears, *rev.*, similar bust right, 2.61g (AC 1), *about extremely fine* £600-800

150

**Aksumite, Endybis (c. AD 300-310), silver unit**, bust right wearing headcloth, *rev.*, similar bust right, 1.10g (AC 2), *good very fine* £200-250



151

**Aksumite, Ousanas (c. AD 320), gold unit**, crowned bust right holding sceptre, flanked by corn-ears, *rev.*, bust right wearing headcloth between corn-ears, 2.12g (AC 21), *vertical scrape before the obverse bust but otherwise virtually as struck and very rare* £2,000-2,500



152

**Aksumite, Ousanas (c. AD 320), silver unit**, bust right wearing headcloth, *rev.*, similar bust right, 2.37g (AC 32-3), *good very fine* £200-250

## ANCIENT BRITISH COINS



153

**Ancient British, Cantii, gold stater**, plain obverse, *rev.*, horse with flared nostrils running left; cross-hatched net below; pellets, annulets and S-shaped ornament in fields, 5.47g (ABC 177; S. 169), *extremely fine and very rare (ex Brasted/Westerham hoard, 2001-09)* £3,000-3,500



154

**Ancient British, Cantii, gold quarter stater**, obverse plain, *rev.*, horse left with corded triangle above and cross-hatched net below; annulets/pellets in the fields, 1.33g (ABC 198; S. 172), *perfectly centred, extremely fine (ex Brasted/Westerham hoard, 2001-09)* £500-600

All lots are subject to a Buyer's Premium of 20% on the hammer price plus VAT as appropriate. See our Conditions of Business for further details.





155

**Ancient British, Cantii, gold quarter stater**, obverse plain, *rev.*, horse left with corded triangle above and cross-hatched net below; annulets/pellets in the fields, 1.33g (ABC 198; S. 172), *extremely fine* (ex Brasted/Westerham hoard, 2001-09) £400-500

156

**Ancient British, Cantii, gold quarter stater**, obverse plain, *rev.*, horse left with corded triangle above and net below containing single X; annulets/pellets in the fields, 1.29g (ABC 198; S. 172), *red gold, extremely fine* (ex Brasted/Westerham hoard, 2001-09) £400-500

157

**Ancient British, Cantii, gold quarter stater**, obverse plain, *rev.*, horse left with corded triangle above and net below containing single X; annulets/pellets in the fields, 1.29g (ABC 198; S. 172), *red gold, extremely fine* (ex Brasted/Westerham hoard, 2001-09) £400-500



158

**Ancient British, Cantii, gold quarter stater**, obverse with slight markings, *rev.*, horse running right; curved ornament above, 1.35g (ABC 201; S. 44), *good very fine* (ex Brasted/Westerham hoard, 2001-09) £250-300

159

**Ancient British, Cantii, potin issue**, with abstract head and bull, 1.12g (ABC 174), *extremely fine*; **Regni/Atrebates, Tincomarus, silver unit**, Cernunnos type, facing head, *rev.*, bull, 1.00g (ABC 1109), *reverse corroded, about very fine*; **Verica, silver unit**, Head on Spear type, bull right, *rev.*, standing figure, 1.06g (ABC 1235), *good very fine* (3) £200-250

160

**Ancient British, Regni/Atrebates, gold stater**, wreath design, *rev.*, horse right with wheel below, 5.69g (ABC 485; S. 38), *partly weak, some marks, very fine* £300-400

161

**Ancient British, Belgae, gold stater**, wreath design, *rev.*, horse left, "crab" below, 6.46g (ABC 746; S. 22), *very fine* £300-350

162

**Ancient British, Regni/Atrebates, Tincomarus (c. 25BC-AD 10), silver unit**, laureate head right, *rev.*, TIN-CO, bull rearing right, 1.11g (ABC 1115; S. 85), *slightly porous, very fine* £120-150



163

**Ancient British, Regni/Atrebates, Epillus(c. 20 BC-AD 1), gold quarter stater**, CALLEV with star above and below, *rev.*, EPPI, dog running right, 1.16g (ABC 1148; S. 96), *good very fine* £300-400

164

**Ancient British, Regni/Atrebates, Epillus (c. 20 BC-AD 1), silver unit**, Grapevine type, bearded head right, *rev.*, boar right, 1.25g (ABC 1163; S. 100), *good very fine, rare* £200-250

165

**Ancient British, Regni/Atrebates, Verica (c. AD 10-40), gold quarter stater**, COM F on tablet, *rev.*, horse stepping right; VI above, 1.15g (ABC 1202; S. 125), *about extremely fine* £400-600

All lots are subject to a Buyer's Premium of 20% on the hammer price plus VAT as appropriate. See our Conditions of Business for further details.



166

**Ancient British, Regni/Atrebates, Verica (c. AD 10-40), gold quarter stater, VERIC COM F, crescent above and star below, rev., REX, horse stepping right with star above, 1.33g (ABC 1208; S. 127), good extremely fine, very rare**  
£800-1,000



167

**Ancient British, Regni/Atrebates, Epaticcus (c. AD 20-40), silver unit, bust right in lionskin headdress; EPATIC before, rev., eagle holding snake in talons, 1.24g (ABC 1346; S. 356), good very fine**  
£150-200

168

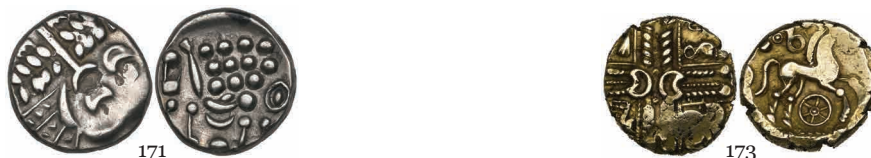
**Ancient British, Regni/Atrebates, Caratacus (c. AD 40-43), silver unit, bust right in lionskin headdress; CARA before, rev., eagle holding snake in talons, 0.94g (ABC 1376; S. 364), good very fine and rare**  
£600-800

169

**Ancient British, Icenii, silver unit, head right, rev., horse right, 1.18g (ABC 1567), good very fine; with silver units (5) comprising anonymous, 0.92g (ABC 1591), plated, Cani-Duro (2), 1.38g (plated) and 1.23g (both ABC 1630), Ecen, 1.20g (ABC 1657) and Saenu, 1.22g (ABC 1699); and half unit, 0.52g (ABC 1693), mainly very fine (7)**  
£250-300

170

**Ancient British, Corieltavi, Vepo, silver half unit, wreath, rev., horse, 0.58g (ABC 1896); Dobunni, anonymous silver units (5), various types, 0.99g, 0.83g, 0.95g (ABC 2015), 1.09g (ABC 2027), 0.99g (ABC 2036), edge chipped; with copper core for Anted stater, 4.73g (cf. ABC 2066) and East Wilts silver unit, 0.86g (ABC 2125), mainly fine to very fine (8)**  
£200-250



171

**Ancient British, Durotriges, silver stater, abstract wreathed head, rev., horse left, twelve pellets above, 4.99g (ABC 2157; S. 365), good very fine**  
£150-200

172

**Ancient British, Durotriges, silver and billon staters, similar types, 4.94g (ABC 2157), weak obverse, and 4.47g (ABC 2160); silver quarter staters (3), "men in boat" types, 1.14g (ABC 2208), 0.76g (ABC 2214), and starfish type, 0.88g (ABC 2220); Catuvellauni, Tasciovanus, bronze unit, star pattern, rev., bull, 2.36g (ABC 2685); Dias (?), bronze unit, head right, rev., seated figure, 1.91g (ABC 2751), mainly very fine; with lead and bronze so-called ring money and uncertain Ae minim, fair to fine (10)**  
£300-350

173

**Catuvellauni, gold stater, crossed wreaths design, rev., horse right, wheel below, 5.63g (ABC 2442; S. 32), partly weak, good very fine**  
£300-400

## ROMAN COINS



174

**Julius Caesar (died 44 BC), denarius, 49-48 BC**, elephant trampling serpent, *rev.*, sacrificial implements, 3.89g (Cr. 433/1), *very fine, toned* £300-400

175

**Roman Republic, denarii (4)**, comprising Veturia, Herennia, Tituria and Papia (Cr. 234/1, 308/1a, 344/1a, 472/1); **Imperial denarii (8)**, of Vespasian (2), including eagle on altar, Domitian, Trajan (4, one a Lycian drachm) and Hadrian (3), including *rev.*, crescent and star (RIC 924), *fine to very fine* (14) £200-250



176

176

**Tiberius (14-37), sestertertius, Rome, 36-37**, empty triumphal quadriga, *rev.*, inscription around SC, 27.32g (RIC 66; BMC 130), *some areas of corrosion but very fine* £150-200



178

177

**Tiberius (14-37), dupondius, Commagene**, head right, *rev.*, crossed cornucopias (RPC 3869), *good fine*; **Agrippa, as, rev.**, Poseidon, *very fine*; **Caligula, as, rev.**, Vesta, *about very fine*; **Claudius, sestertertius, rev.**, EX SC etc, *fine*; **Nero, as, rev.**, Victory alighting with shield, *good very fine* (5) £200-250

178

**Caligula (37-41), denarius, Rome, 37**, bare head right, *rev.*, radiate head of Divus Augustus, 3.33g (RIC 2; BMC 4), *edge damage and scratch on obverse portrait, otherwise very fine* £400-600



179

179

**Divus Vespasian, denarius, struck by Titus, Rome, 80-81**, laureate head right, *rev.*, foreparts of capricorns supporting shield inscribed SC, 3.49g (RIC 357; BMC 129), *good very fine* £120-150



180

180

**Titus (79-81), denarius, Rome, 80**, laureate head right, *rev.*, dolphin coiled around anchor, 3.52g (RIC 112; BMC 72), *slight reverse flan flaw, extremely fine, toned* £300-400

181

**Antoninus Pius (138-161), denarii (4)**, *revs.*, Vesta standing left, Victory, modius, and head of Marcus Aurelius right; **Divus Antoninus Pius, denarius, rev.**, altar; **Faustina I, denarius, rev.**, throne; **Marcus Aurelius, denarii (3)**, *rev.*, Mars, Pax, Salus; **Commodus, denarius, rev.**, Minerva, *mainly very fine* (10) £250-300

182

**Macrinus (217-218), denarius**, laureate bust right, *rev.*, Annona seated left, *about extremely fine*; together with denarii of Septimius Severus (1) and Caracalla (4), *very fine or better* (6) £200-250

183

**Diocletian (284-305), argenteus, unclear mint, rev.**, tetrarchs sacrificing before camp, *weak reverse, very fine*; **Galerius as Caesar, argenteus, Heraclea, rev.**, similar (RIC 8), *small flan crack, good very fine*; **Constantius II, siliqua, Lyon, rev.**, Victory; **Magnus Maximus, siliqua, Trier, rev.**, Virtus Romanorum, *very fine or better* (4) £250-350

All lots are subject to a Buyer's Premium of 20% on the hammer price plus VAT as appropriate. See our Conditions of Business for further details.





184

184

**Carausius (286-293), antoninianus, Colchester**, radiate bust right, *rev.*, ROMAE AETERNAE, Roma seated left presenting Victory to Carausius; *in ex.*, CXXI, 4.80g (RIC 390), *dark green patina, good very fine and rare* £200-300



185

185

**Carausius (286-293), antoninianus, Colchester**, radiate bust right, *rev.*, LAETIT AVG, Laetitia standing left, 4.49g (RIC 250), *extremely fine* £120-150

186

**Carausius (286-293), antoniniani of London (2) and Colchester (3)**, comprising London mint Pax type (2, RIC 101, one with P of PAX inverted) and Colchester mint Laetitia (RIC 253), Pax (RIC 300) and Tempor Fel, Felicitas (RIC 419 var.), *mainly very fine*; **Allectus (293-296), bronze quinarius, Colchester**, *rev.*, galley (RIV 128), *very fine* (5) £200-250

187

**Carausius (286-293), antoniniani (4), rev.**, Providentia holding baton and cornucopia (RIC 499), Providentia holding globe and cornucopia (RIC 502), Fides Militum (RIC 783) and Virtus Aug (RIC 1038); **Allectus (293-296), bronze quinarius, Colchester**, *rev.*, galley (RIV 128) *very fine to extremely fine* (5) £300-400

188

**Tetrarchy, Antioch mint**, large folles of Diocletian (2, RIC 52a and 114), Constantius I as Caesar (RIC 51a) and Maximian (2, RIC 52b and 76b), *very fine to extremely fine* (5) £200-250

189

**Roman 3rd century and later**, antoniniani of Probus, Postumus, Claudius II, Tetricus I, bronze folles of Constantine I (3) including bust type with sceptre, Trier (RIC 305), Urbs Roma (2), Constantinopolis type, Constantine II, Crispus, Theodosius I, Valens and Valentinian I; Byzantine follis of Justin II, Nicomedia (S. 369), Theophilus, Syracuse (S. 1680) and Basil I, Constantinople (S. 1712), *mainly very fine, some extremely fine* (18) £250-300



190

**Constantine I, the Great (307-337), solidus, Rome, 312**, CONSTANT-INVS P F AVG, laureate head right, *rev.*, PRINCIPI IV-V-ENTVTIS, prince standing right with spear and globe; *in ex.*, PR, 4.50g (cf. RIC VI, 284 var.; Depeyrot 17/6 var.), *edge nick at 3 o'clock, some marks, very fine, very rare* £3,000-4,000

Ex European Ambassador Collection, formed in the 1950s and 1960s.





191

**Constantine I, the Great (307-337), solidus, Constantinople, 328-9**, CONSTANTI-NVS MAX AVG, diademed, draped and cuirassed bust right, *rev.*, CONSTA-N-TINVS AVG, Victory advancing left with wreath and palm; *in ex.*, CONS and star, 4.78g (cf RIC VII, 46 var.; Depeyrot 3/1 var. – both without the star following the mint name), *slight edge marks, very fine, apparently an unrecorded variety* £3,000-4,000

Ex European Ambassador Collection, formed in the 1950s and 1960s. Only two solidi with the mint mark CONS followed by a star are recorded in RIC, one in Paris, the other in Copenhagen, and both show a different reverse legend (Constantiniana Dafne) to the present coin which otherwise appears to be unlisted.



192

**Constantine I, the Great (307-337), solidus, Siscia, 335**, CONSTANTI-NVS MAX AVG, diademed, draped and cuirassed bust right, *rev.*, VICTORIA CONSTANTINI AVG, Victory seated right, inscribing XXX on shield which is supported by Genius; *in ex.*, SIS, 4.40g (RIC 243; Depeyrot 23/2), *edge mark at 3 o'clock, slightly clipped and minor reverse graffiti, good very fine* £2,000-3,000

Ex European Ambassador Collection, formed in the 1950s and 1960s.



193

**Julian II (360-363), solidus, Antioch, 361-3**, FL CL IVLIA-NVS P F AVG, diademed, draped and cuirassed bust right, *rev.*, VIRTVS EXERCITVS ROMANORVM, soldier carrying trophy and dragging captive by the hair; *in ex.*, ANTI, 4.50g (RIC 197; Depeyrot 15/2), *scuff on soldier's right leg, otherwise good extremely fine* £5,000-7,000

Ex European Ambassador Collection, formed in the 1950s and 1960s.



194

**Valentinian I (364-375), solidus, Constantinople, 368**, D N VALENTINI-ANVS P F AVG, diademed, draped and cuirassed bust right, *rev.*, VICTORIA AVGVSTORVM, Victory seated right, inscribing VOT V MVL X on shield; across field O-B; *in ex.*, CONS\*, 4.45g (RIC 26(a); Depeyrot 27/1), *extremely fine*

£1,000-1,500

Ex European Ambassador Collection, formed in the 1950s and 1960s.



195



196



197

195

**Gratian (367-383), solidus, Trier, 373-375**, diademed bust right, *rev.*, VICTOR-IA AVGG, two emperors seated facing, holding globe between them and with Victory behind; *in ex.*, TROBS, 4.48g (RIC 17g; Depeyrot 43/3), *minor marks, extremely fine*

£800-1,000

196

**Gratian (367-383), solidus, Trier, 376-7**, D N GRATIA-NVS PF AVG, diademed, draped and cuirassed bust right, *rev.*, VICTOR-IA AVGG, two emperors seated facing holding globe; *in ex.*, TROBC, 4.50g (RIC 39; Depeyrot 47/2), *a few marks on obverse, otherwise extremely fine*

£400-600

Ex European Ambassador Collection, formed in the 1950s and 1960s.

197

**Gratian (367-383), solidus, Constantinople, 383**, D N GRATIA-NVS PF AVG, diademed, draped and cuirassed bust right, *rev.*, CONCOR-DIA AVGGG H, Constantinopolis seated, holding sceptre and globe; *in ex.*, CONOB, 4.42g (RIC 45(a); Depeyrot 33/1), *some marks and scrape at edge, otherwise extremely fine*

£400-600

Ex European Ambassador Collection, formed in the 1950s and 1960s.



198

**Theodosius I. the Great (379-395), solidus, Constantinople, 383-387**, diademed bust right, *rev.*, CONCORDI-A AVGGGG A, Constantinopolis seated on throne adorned with lions' heads, holding shield inscribed VOT V MVL X; *in ex.*, CONOB, 4.46g (RIC 47a; Depeyrot 39/1), *extremely fine*

£1,000-1,250





199

199

**Theodosius I (379-395), solidus, Sirmium, 395**, D N THEODO-SIVS PF AVG, diademed, draped and cuirassed bust right, *rev.*, VICTOR-IA AVGG, emperor standing right with labarum and Victory, left foot on captive; across field, S-M; in ex., COMOB, 4.51g (RIC 12(b); Depeyrot 31/4), *obverse scuff by diadem, otherwise extremely fine* £600-800

Ex European Ambassador Collection, formed in the 1950s and 1960s.



200

200

**Arcadius (383-408), solidus, Milan, 395-402**, diademed, draped and cuirassed bust right, *rev.*, VICTORI-A AVGGG, emperor standing right with labarum and Victory on globus, left foot on captive; across field, M-D; in ex., COMOB, 4.43g (RIC 1205; Depeyrot 16/1), *minor marks, otherwise extremely fine* £400-500

Ex European Ambassador Collection, formed in the 1950s and 1960s.



201

201

**Arcadius (383-408), solidus, Ravenna, 402/3-405/6**, diademed bust right, *rev.*, VICTORI-A AVGGG, emperor standing right holding standard and Victory on globe and trampling foe; R-V across field; *in ex.*, COMOB, 4.49g (RIC 1286; Depeyrot 7/2), *extremely fine* £700-800



202

202

**Arcadius (383-408), solidus, Thessalonica, 402-403**, helmeted bust, facing with spear and shield, *rev.*, CONCORDI-A AVGGG, Constantinopolis seated, holding sceptre and Victory on globe; *in ex.*, COMOB, 4.56g (RIC 39; Depeyrot 45/1), *extremely fine* £500-700

Ex European Ambassador Collection, formed in the 1950s and 1960s.



203

203

**Arcadius (383-408), solidus, Thessalonica, 402-403**, helmeted bust, facing with spear and shield, *rev.*, CONCORDI-A AVGGG, Constantinopolis seated, holding sceptre and Victory on globe; *in ex.*, COMOB, 4.19g (RIC 39; Depeyrot 45/1), *faint marks, about extremely fine* £400-500

Ex European Ambassador Collection, formed in the 1950s and 1960s.



204

204

**Arcadius (383-408), solidus, Constantinople, 383**, D N ARCADI-VS PF AVG, diademed, draped and cuirassed bust right, *rev.*, CONCORDI-A AVGGGG I, Constantinopolis seated, holding sceptre and globe; *in ex.*, CONOB, 4.49g (RIC 46(f); Depeyrot 38/6), *obverse scuff, minor edge mark, about extremely fine* £400-600

Ex European Ambassador Collection, formed in the 1950s and 1960s.



205

**Arcadius (383-408), solidus, Constantinople, 388-392**, diademed bust right, *rev.*, CONCOR-DIA AVGGG I, Concordia seated on throne, holding globe and spear; *in ex.*, CONOB, 4.45g (RIC 45e; Depeyrot 46/3), *extremely fine* £700-800





206

206

**Arcadius (383-408), solidus, Constantinople, 397-402**, helmeted bust, facing with spear and shield, *rev.*, CONCORDIA AVGG Θ, Constantinopolis seated, holding sceptre and Victory on globe; *in ex.*, CONOB, 4.45g (RIC 7; Depeyrot 55/1), *extremely fine* £500-600

Ex European Ambassador Collection, formed in the 1950s and 1960s.



207

207

**Arcadius (383-408), solidus, Constantinople, 397-402**, helmeted bust, facing with spear and shield, *rev.*, CONCORDIA AVGG Γ, Constantinopolis seated, holding sceptre and Victory on globe; *in ex.*, CONOB, 4.45g (RIC 7; Depeyrot 55/1), *extremely fine* £500-600

Ex European Ambassador Collection, formed in the 1950s and 1960s.



208

208

**Arcadius (383-408), solidus, Constantinople, 397-402**, helmeted bust, facing with spear and shield, *rev.*, CONCORDIA AVGG Z, Constantinopolis seated, holding sceptre and Victory on globe; *in ex.*, CONOB, 4.42g (RIC 7; Depeyrot 55/1), *some obverse marks, good very fine* £400-500

Ex European Ambassador Collection, formed in the 1950s and 1960s.



209

209

**Arcadius (383-408), solidus, Constantinople, 402**, helmeted bust, facing with spear and shield, *rev.*, NOVA SPES REI PVBLICAE, Victory seated right, inscribing XX/XXX on shield; *in ex.*, CONOB, 4.49g (RIC 23; Depeyrot 54/1), *extremely fine* £500-700

Ex European Ambassador Collection, formed in the 1950s and 1960s.



210

210

**Arcadius (383-408), solidus, Constantinople, 402**, helmeted bust, facing with spear and shield, *rev.*, NOVA SPES REI PVBLICAE, Victory seated right, inscribing XX/XXX on shield; *in ex.*, CONOB, 4.47g (RIC 23; Depeyrot 54/1), *minor flan flaw on check, otherwise extremely fine* £500-700

Ex European Ambassador Collection, formed in the 1950s and 1960s.



211

211

**Arcadius (383-408), semissis, Constantinople, 379-402**, diademed, draped and cuirassed bust right, *rev.*, VICTORIA AVGVSTORVM, Victory seated right, inscribing VOT/X/MVLT/XX on shield; in right field, Christogram; *in ex.*, CONOB, 2.08g (RIC 16; Depeyrot 52/2), *very fine* £300-400

Ex European Ambassador Collection, formed in the 1950s and 1960s.



212

**Arcadius (383-408), tremissis, Constantinople, 388-393**, diademed, draped and cuirassed bust right, *rev.*, VICTORIA AVGVSTORVM, Victory advancing right holding wreath and globus cruciger; *in ex.*, CONOB, 1.47g (RIC 19; Depeyrot 50/3), *slightly wavy flan, about extremely fine* £500-700

Ex European Ambassador Collection, formed in the 1950s and 1960s.

All lots are subject to a Buyer's Premium of 20% on the hammer price plus VAT as appropriate. See our Conditions of Business for further details.



213

213

**Arcadius (383-408), tremissis, Constantinople, 388-393**, diademed, draped and cuirassed bust right, *rev.*, VICTORIA AVGVSTORVM, Victory advancing right holding wreath and globus cruciger; *in ex.*, CONOB, 1.52g (RIC 19; Depeyrot 50/3), a few *obverse marks*, *good very fine* £400-500

Ex European Ambassador Collection, formed in the 1950s and 1960s.



214

214

**Honorius (393-423), solidus, Milan, 402-403**, diademed bust right, *rev.*, VICTORI-A AVGGG, emperor standing right holding standard Victory on globe and trampling foe; M-D across field; *in ex.*, COMOB, 4.42g (RIC 35c; Depeyrot 16/2), *almost extremely fine* £600-800

215

**Theodosius II (402-450), solidus, Thessalonica, 425-430**, helmeted bust facing three-quarters right, holding spear and shield, *rev.*, GLOR ORVI-S TERRAR, emperor standing facing, holding labarum and globus cruciger, in left field, star; *in ex.*, TESOB, 4.46g (RIC 27; Depeyrot 51/1), *very fine* £400-600

Ex European Ambassador Collection, formed in the 1950s and 1960s.



216

216

**Theodosius II (402-450), solidus, Constantinople, 402-403**, helmeted bust facing three-quarters right, holding spear and shield, *rev.*, CONCORDI-A AVGGG Δ, Constantinopolis seated, holding sceptre and Victory on globe; *in ex.*, COMOB, 4.45g (RIC 27; Depeyrot 56/2), *about extremely fine* £400-500

Ex European Ambassador Collection, formed in the 1950s and 1960s.



217

217

**Theodosius II (402-450), solidus, Constantinople, 423-4**, helmeted bust facing three-quarters right, holding spear and shield, *rev.*, VOT XX MVLT XXX I, Victory standing left holding long cross, above star; *in ex.*, CONOB, 4.43g (RIC 225; Depeyrot 75/1), *good very fine* £400-500

Ex European Ambassador Collection, formed in the 1950s and 1960s.



218

218

**Theodosius II (402-450), solidus, Constantinople, 425-9**, helmeted bust facing three-quarters right, *rev.*, SALVS REI PUBLICAE B, two emperors nimbate enthroned facing, holding mappa and cruciform sceptre; *in ex.*, CONOB, 4.44g (RIC 237; Depeyrot 79/1), *minor graffiti on neck, extremely fine* £500-700

Ex European Ambassador Collection, formed in the 1950s and 1960s.



219

**Theodosius II (402-450), solidus, Constantinople, 430-440**, helmeted bust facing three-quarters right, *rev.*, VOT XXX MVLT XXXX A, Constantinopolis enthroned facing left, holding globus cruciger and sceptre, in right field, star; *in ex.*, CONOB, 4.49g (RIC 257; Depeyrot 81/1), *obverse minor flan flaw, faint edge marks, extremely fine* £400-600

Ex European Ambassador Collection, formed in the 1950s and 1960s.

All lots are subject to a Buyer's Premium of 20% on the hammer price plus VAT as appropriate. See our Conditions of Business for further details.





220



221

220

**Theodosius II (402-450), solidus, Constantinople, 443-450**, helmeted bust facing three-quarters right, *rev.*, IMP XXXX II COS XVII P P, Constantinopolis enthroned facing left, holding globus cruciger and sceptre, in left field, star; *in ex.*, COMOB, 4.46g (RIC 286; Depeyrot 84/1), *about extremely fine* £350-450

Ex European Ambassador Collection, formed in the 1950s and 1960s.

221

**Theodosius II (402-450), semissis, Constantinople, 420-2**, diademed, draped and cuirassed bust right, *rev.*, VICTORIA AVGG, Victory seated right, inscribing X/XXX on shield; in left field, star; in right field, Christogram; *in ex.*, CONOB, 2.26g (RIC 272; Depeyrot 80/3), *good very fine* £400-600

Ex European Ambassador Collection, formed in the 1950s and 1960s.



222



223



224

222

**Theodosius II (402-450), tremissis, Constantinople, 439**, diademed, draped and cuirassed bust right, *rev.*, VICTORIA AVGVSTORVM, Victory advancing right holding wreath and globus cruciger; in right field, star; *in ex.*, CONOB, 1.46g (RIC 276; Depeyrot 70/1), *obverse minor mark on chin, otherwise about extremely fine* £250-350

Ex European Ambassador Collection, formed in the 1950s and 1960s.

223

**Theodosius II (402-450), tremissis, Constantinople, 439**, diademed, draped and cuirassed bust right, *rev.*, VICTORIA AVGVSTORVM, Victory advancing right holding wreath and globus cruciger; in right field, star; *in ex.*, CONOB, 1.48g (RIC 276; Depeyrot 70/1), *good very fine* £200-300

Ex European Ambassador Collection, formed in the 1950s and 1960s.

224

**Theodosius II (402-450), tremissis, Constantinople, 439**, diademed, draped and cuirassed bust right, *rev.*, VICTORIA AVGVSTORVM, Victory advancing right holding wreath and globus cruciger; in right field, star; *in ex.*, CONOB, 1.49g (RIC 276; Depeyrot 70/1), *some obverse marks, good very fine* £200-300

Ex European Ambassador Collection, formed in the 1950s and 1960s.



225

**Eudocia, wife of Theodosius II, solidus, Constantinople, 443-450**, AEL EVDO-CIA AVG, diademed and draped bust right, Manus Dei above, *rev.*, IMP XXXX II' COS' X'VII' P' P', Constantinopolis enthroned facing left, holding globus cruciger and sceptre; in left field, star; *in ex.*, COMOB, 4.20g (RIC 289; Depeyrot 84/4), *clipped, obverse scratched, good very fine* £800-1,200

Ex European Ambassador Collection, formed in the 1950s and 1960s.

All lots are subject to a Buyer's Premium of 20% on the hammer price plus VAT as appropriate. See our Conditions of Business for further details.





226

**Aelia Pulcheria, sister of Theodosius II, solidus, Constantinople, 450-7**, AEL PVLCH-ERIA AVG, diademed and draped bust right, Manus Dei above, *rev.*, VICTORI-A AVGGG, Victory standing left holding long cross; in right field, star; in ex., CONOB, 4.50g (RIC 512; Depeyrot 87/3), *reverse minor graffiti, otherwise about extremely fine* £1,500-2,000

Ex European Ambassador Collection, formed in the 1950s and 1960s.



227

**Aelia Pulcheria, sister of Theodosius II, tremissis, Constantinople, 425-9**, AEL PVLCH-ERIA AVG, diademed, draped and cuirassed bust right, *rev.*, cross within wreath; in ex., CONOB\*, 1.48g (RIC 252; Depeyrot 72/4), *a few marks, good very fine* £700-900

Ex European Ambassador Collection, formed in the 1950s and 1960s.

228

**Aelia Pulcheria, sister of Theodosius II, tremissis, Constantinople, 439**, AEL PVLCH-ERIA AVG, diademed, draped and cuirassed bust right, *rev.*, cross within wreath; in ex., CONOB\*, 1.36g (RIC 280; Depeyrot 72/4), *a few marks, very fine* £400-600

Ex European Ambassador Collection, formed in the 1950s and 1960s.



229

**Valentinian III (425-455), solidus, Ravenna, 430-445**, diademed, draped and cuirassed bust right, *rev.*, VICTORI-A AVGGG, emperor standing facing, holding long cross and Victory on globus, left foot on man-headed serpent; across field, R-V; in ex., COMOB, 4.41g (RIC 2019; Depeyrot 13/1), *good very fine* £500-700

Ex European Ambassador Collection, formed in the 1950s and 1960s.

230

**Marcian (450-457), solidus, Constantinople, 450**, helmeted bust, facing with spear and shield, *rev.*, VICTORI-A AVGGG S, Victory standing left holding long cross; in right field, star; in ex., CONOB, 4.35g (RIC 510; Depeyrot 87/1), *good very fine* £400-500

Ex European Ambassador Collection, formed in the 1950s and 1960s.

231

**Marcian (450-457), solidus, Constantinople, 450**, helmeted bust, facing with spear and shield, *rev.*, VICTORI-A AVGGG E, Victory standing left holding long cross; in right field, star; in ex., CONOB, 4.50g (RIC 510; Depeyrot 87/1), *scuff marks on reverse, otherwise extremely fine* £400-500

Ex European Ambassador Collection, formed in the 1950s and 1960s.

All lots are subject to a Buyer's Premium of 20% on the hammer price plus VAT as appropriate. See our Conditions of Business for further details.



232



233

232

**Marcian (450-457), tremissis, Constantinople, 450**, diademed, draped and cuirassed bust right, *rev.*, VICTORIA AVGVSTORVM, Victory advancing right holding wreath and globus cruciger; in right field, star; *in ex.*, CONOB, 1.49g (RIC 520; Depeyrot 87/5), *good very fine* £200-300

Ex European Ambassador Collection, formed in the 1950s and 1960s.

233

**Leo I (457-474), solidus, Constantinople, 462-466**, helmeted bust, facing with spear and shield, *rev.*, VICTORI-A AVGGG I, Victory standing left holding long cross; in right field, star; *in ex.*, CONOB, 4.45g (RIC 605; Depeyrot 93/1), *extremely fine* £500-700

Ex European Ambassador Collection, formed in the 1950s and 1960s.



234



235

234

**Leo I (457-474), solidus, Constantinople, 462-466**, helmeted bust, facing with spear and shield, *rev.*, VICTORI-A AVGGG S, Victory standing left holding long cross; in right field, star; *in ex.*, CONOB, 4.50g (RIC 605; Depeyrot 93/1), *extremely fine* £500-700

Ex European Ambassador Collection, formed in the 1950s and 1960s.

235

**Leo I (457-474), solidus, Constantinople, 462-466**, helmeted bust, facing with spear and shield, *rev.*, VICTORI-A AVGGG A, Victory standing left holding long cross; in right field, star; *in ex.*, CONOB, 4.49g (RIC 605; Depeyrot 93/1), *minor edge mark, extremely fine* £400-500

Ex European Ambassador Collection, formed in the 1950s and 1960s.



236



237



238

236

**Leo I (457-474), tremissis, Constantinople, 462-466**, diademed, draped and cuirassed bust right, *rev.*, VICTORIA AVGVSTORVM, Victory advancing right holding wreath and globus cruciger; in right field, star; *in ex.*, CONOB, 1.49g (RIC 611; Depeyrot 93/3), *some scuffs, good very fine* £150-200

Ex European Ambassador Collection, formed in the 1950s and 1960s.

237

**Leo I (457-474), tremissis, Constantinople, 462-466**, diademed, draped and cuirassed bust right, *rev.*, VICTORIA AVGVSTORVM, Victory advancing right holding wreath and globus cruciger; in right field, star; *in ex.*, CONOB, 1.49g (RIC 611; Depeyrot 93/3), *obverse minor graffiti, good very fine* £150-200

Ex European Ambassador Collection, formed in the 1950s and 1960s.

238

**Leo I (457-474), tremissis, Constantinople, 462-466**, diademed, draped and cuirassed bust right, *rev.*, VICTORIA AVGVSTORVM, Victory advancing right holding wreath and globus cruciger; in right field, star; *in ex.*, CONOB, 1.49g (RIC 611; Depeyrot 93/3), *some marks, about extremely fine* £150-200

Ex European Ambassador Collection, formed in the 1950s and 1960s.





239

**Leo II and Zeno (474), solidus, Constantinople**, D N LEO ET Z-ENO PP AVG, helmeted bust, facing with spear and shield, *rev.*, SALVS REI PVBLICAE A, two emperors nimbate enthroned facing, each holding mappa; between their heads cross, above, star; *in ex.*, CONOB, 4.47g (RIC 803; Depeyrot 98/1), *obverse faint scuffs, minor edge marks, about extremely fine* £1,200-1,500

Ex European Ambassador Collection, formed in the 1950s and 1960s.



240

**Leo II and Zeno (474), solidus, Constantinople**, D N LEO ET Z-ENO PP AVG, helmeted bust, facing with spear and shield, *rev.*, SALVS REI PVBLICAE E, two emperors nimbate enthroned facing, each holding mappa; between their heads cross, above, star; *in ex.*, CONOB, 4.44g (RIC 803; Depeyrot 98/1), *reverse slightly double struck, virtually as struck* £1,500-2,000

Ex European Ambassador Collection, formed in the 1950s and 1960s.



241



242



243

241

**Zeno, First Reign (475), tremissis, Constantinople**, diademed, draped and cuirassed bust right, *rev.*, VICTORIA AVGVSTORVM, Victory advancing right holding wreath and globus cruciger; in right field, star; *in ex.*, CONOB, 1.49g (RIC 903; Depeyrot 108/5), *about extremely fine* £150-200

Ex European Ambassador Collection, formed in the 1950s and 1960s.

242

**Zeno, First Reign (475), tremissis, Constantinople**, diademed, draped and cuirassed bust right, *rev.*, VICTORIA AVGVSTORVM, Victory advancing right holding wreath and globus cruciger; in right field, star; *in ex.*, CONOB, 1.50g (RIC 903; Depeyrot 108/5), *extremely fine* £200-300

Ex European Ambassador Collection, formed in the 1950s and 1960s.

243

**Zeno, First Reign (475), tremissis, Constantinople**, diademed, draped and cuirassed bust right, *rev.*, VICTORIA AVGVSTORVM, Victory advancing right holding wreath and globus cruciger; in right field, star; *in ex.*, CONOB, 1.50g (RIC 903; Depeyrot 108/5), *about extremely fine* £150-200

Ex European Ambassador Collection, formed in the 1950s and 1960s.





244

**Basiliscus (475-476), solidus, Constantinople**, D N BASILIS-CUS PP AVG, helmeted bust, facing with spear and shield, *rev.*, VICTORI-A AVGGG I, Victory standing left holding long cross; in right field, star; *in ex.*, CONOB, 4.37g (RIC 1003; Depeyrot 101/1), *obverse scratches on face, edge marks, otherwise about extremely fine* £700-1,000

Ex European Ambassador Collection, formed in the 1950s and 1960s.



245

**Basiliscus (475-476), tremissis, Constantinople**, D N BASILIS-CUS PP AVG, diademed, draped and cuirassed bust right, *rev.*, VICTORIA AVGVSTORVM, Victory advancing right holding wreath and globus cruciger; in right field, star; *in ex.*, CONOB, 1.47g (RIC 1008; Depeyrot 101/2), *about extremely fine* £500-600

Ex European Ambassador Collection, formed in the 1950s and 1960s.

246

**Basiliscus (475-476), tremissis, Constantinople**, D N BASILIS-CUS PP AVG, diademed, draped and cuirassed bust right, *rev.*, VICTORIA A[VGVSTORVM], Victory advancing right holding wreath and globus cruciger; in right field, star; *in ex.*, CONOB, 1.48g (RIC 1008; Depeyrot 101/2), *pierced, reverse overstruck, otherwise very fine* £150-200

Ex European Ambassador Collection, formed in the 1950s and 1960s.



247

**Zeno, Second Reign (476-491), solidus, Constantinople**, helmeted bust, facing with spear and shield, *rev.*, VICTORI-A AVGGG E, Victory standing left holding long cross; in right field, star; *in ex.*, CONOB, 4.48g (RIC 911; Depeyrot 108/1), *tiny obverse right field mark, minor edge mark, otherwise extremely fine* £600-700

Ex European Ambassador Collection, formed in the 1950s and 1960s.

248

**Zeno, Second Reign (474-491), tremissis, Constantinople**, diademed, draped and cuirassed bust right, *rev.*, VICTORA AVGVSTORVM (sic), Victory advancing right holding wreath and globus cruciger; in right field, star; *in ex.*, CONOB, 1.48g (RIC 914; Depeyrot 108/4), *good very fine* £200-300

Ex European Ambassador Collection, formed in the 1950s and 1960s.

249

**Zeno, Second Reign (474-491), tremissis, Constantinople**, diademed, draped and cuirassed bust right, *rev.*, VICTORIA AVGVSTORVM, Victory advancing right holding wreath and globus cruciger; in right field, star; *in ex.*, CONOB, 1.44g (RIC 914; Depeyrot 108/4), *a few marks, otherwise about extremely fine* £200-300

Ex European Ambassador Collection, formed in the 1950s and 1960s.

All lots are subject to a Buyer's Premium of 20% on the hammer price plus VAT as appropriate. See our Conditions of Business for further details.

## BYZANTINE COINS

Starting at 2.00pm



250

250

**Anastasius I (491-518), solidus, Constantinople, 507-518**, facing bust, *rev.*, Victory standing left holding inverted Christogram-topped staff; officina Γ; *in ex.*, CONOB, 4.52g (DO 7; S. 5; MIB 7), *extremely fine* £400-600

Ex European Ambassador Collection, formed in the 1950s and 1960s.



251

251

**Anastasius I (491-518), solidus, Constantinople, 507-518**, facing bust, *rev.*, Victory standing left holding inverted Christogram-topped staff; officina Δ; *in ex.*, CONOB, 4.42g (DO 7; S. 5; MIB 7), *extremely fine* £400-600

Ex European Ambassador Collection, formed in the 1950s and 1960s.



252

252

**Anastasius I (491-518), semissis, Constantinople, 512-518**, diademed bust right, *rev.*, Victory seated right, inscribing XXXX on shield; on right Christogram; *in ex.*, CONOB, 2.19g (DO 9; S. 7; MIB 10), *minor marks, extremely fine* £200-300

Ex European Ambassador Collection, formed in the 1950s and 1960s.



253

253

**Justin I (518-527), solidus, Constantinople, 518-522**, facing bust, *rev.*, Victory standing left holding inverted Christogram-topped staff; officina Γ; *in ex.*, CONOB, 4.47g (DO 1; S. 55; MIB 2), *extremely fine* £300-400

Ex European Ambassador Collection, formed in the 1950s and 1960s.



254

254

**Justin I (518-527), solidus, Constantinople, 522-527**, facing bust, *rev.*, angel standing facing holding long cross and globus cruciger; officina I; *in ex.*, CONOB, 4.43g (DO 2; S. 56; MIB 3), *minor graffiti on obverse, otherwise extremely fine* £300-400

Ex European Ambassador Collection, formed in the 1950s and 1960s.



255

255

**Justin I (518-527), semissis, Constantinople**, diademed bust right, *rev.*, Victory seated right, inscribing XXXX on shield; on right Christogram; *in ex.*, CONOB, 2.19g (DO 3; S. 57; MIB 4), *extremely fine* £350-400

Ex European Ambassador Collection, formed in the 1950s and 1960s.



256

256

**Justin I (518-527), tremissis, Constantinople**, diademed bust right, *rev.*, Victory advancing right holding wreath and globus cruciger; *in ex.*, CONOB, 1.30g (DO 4; S. 58; MIB 5), *about extremely fine* £200-250

Ex European Ambassador Collection, formed in the 1950s and 1960s.



257

257

**Justin I (518-527), tremissis, Constantinople**, diademed bust right, *rev.*, Victory advancing right holding wreath and globus cruciger; *in ex.*, CONOB, 1.48g (DO 4; S. 58; MIB 5), *about extremely fine* £200-250

Ex European Ambassador Collection, formed in the 1950s and 1960s.

All lots are subject to a Buyer's Premium of 20% on the hammer price plus VAT as appropriate. See our Conditions of Business for further details.





258

**Justin I and Justinian I (527), solidus, Constantinople**, emperors seated facing with a cross between their heads, both right knees advance; *in ex.*, CONOB, *rev.*, angel standing facing holding long cross and globus cruciger; officina Z (retrograde); *in ex.*, CONOB, 4.38g (S. 115b; MIB 1c), *edge marks, good very fine* £2,000-2,500

Ex European Ambassador Collection, formed in the 1950s and 1960s.



259



260



261

259

**Justinian I (527-565), solidus, Constantinople, 527-537**, facing bust, *rev.*, angel standing facing holding long cross and globus cruciger; officina I; *in ex.*, CONOB, 4.21g (S. 137; MIB 1c), *slightly clipped, good very fine* £300-400

Ex European Ambassador Collection, formed in the 1950s and 1960s.

260

**Justinian I (527-565), solidus, Constantinople, 537-542**, facing bust holding globus cruciger, *rev.*, angel standing facing holding long cross and globus cruciger; officina Θ; *in ex.*, CONOB, 4.13g (DO 8; S. 139; MIB 6), *slightly clipped, extremely fine* £250-300

Ex European Ambassador Collection, formed in the 1950s and 1960s.

261

**Justinian I (527-565), solidus, Constantinople, 542-565**, facing bust holding globus cruciger, *rev.*, angel standing facing holding Christogram-topped staff and globus cruciger; officina S; *in ex.*, CONOB, 4.51g (DO 9; S. 140; MIB 7) *tiny mark in reverse below star, extremely fine* £350-400

Ex European Ambassador Collection, formed in the 1950s and 1960s.



262



263



264

262

**Justinian I (527-565), solidus, Constantinople, 542-565**, facing bust holding globus cruciger, *rev.*, angel standing facing holding Christogram-topped staff and globus cruciger; officina E; *in ex.*, CONOB, 4.13g (DO 9; S. 140; MIB 7) *slightly clipped, extremely fine* £300-350

Ex European Ambassador Collection, formed in the 1950s and 1960s.

263

**Justinian I (527-565), tremissis, Constantinople**, diademed bust right, *rev.*, Victory advancing right holding wreath and globus cruciger; *in ex.*, CONOB, 1.49g (DO 19; S. 145; MIB 19), *extremely fine* £200-250

Ex European Ambassador Collection, formed in the 1950s and 1960s.

264

**Justinian I (527-565), tremissis, Constantinople**, diademed bust right, *rev.*, Victory advancing right holding wreath and globus cruciger; *in ex.*, CONOB, 1.46g (DO 19; S. 145; MIB 19), *obverse flan flaw, about extremely fine* £150-200

Ex European Ambassador Collection, formed in the 1950s and 1960s.

All lots are subject to a Buyer's Premium of 20% on the hammer price plus VAT as appropriate. See our Conditions of Business for further details.





265

**Justin II (565-578), solidus, Constantinople, 567-578**, facing bust holding globe surmounted by Victory, *rev.*, Constantinopolis seated holding globus cruciger and spear; officina Γ; *in ex.*, CONOB, 4.37g (DO 4; S. 345; MIB 4), *slightly clipped, extremely fine* £250-300

Ex European Ambassador Collection, formed in the 1950s and 1960s.



266

**Justin II (565-578), tremissis, Constantinople**, diademed bust right, *rev.*, Victory advancing right holding wreath and globus cruciger; *in ex.*, CONOB, 1.51g (DO 13-14; S. 353; MIB 11a), *minor reverse graffiti, about extremely fine* £150-200

Ex European Ambassador Collection, formed in the 1950s and 1960s.



267

**Justin II (565-578), tremissis, Constantinople**, diademed bust right, *rev.*, Victory advancing right holding wreath and globus cruciger; *in ex.*, CONOB, 1.44g (DO 13-14; S. 353; MIB 11a), *extremely fine* £150-200

Ex European Ambassador Collection, formed in the 1950s and 1960s.



268

**Justin II (565-578), tremissis, Constantinople**, diademed bust right, *rev.*, Victory advancing right holding wreath and globus cruciger; *in ex.*, CONOB, 1.41g (DO 13-14; S. 353; MIB 11a), *extremely fine* £150-200

Ex European Ambassador Collection, formed in the 1950s and 1960s.



269

**Tiberius II Constantine (578-582), solidus, Constantinople, 579**, facing bust wearing consular robes, holding mappa and sceptre, *rev.*, cross potent on four steps; *in ex.*, CONOB, 4.40g (DO 2; S. 420; MIB 2), *partly weak, small graffiti in reverse, very fine* £400-600

Ex European Ambassador Collection, formed in the 1950s and 1960s.



270

**Tiberius II Constantine (578-582), solidus, Constantinople, 579-582**, facing bust holding globus cruciger and shield, *rev.*, cross potent on four steps; officina H; *in ex.*, CONOB, 4.41g (DO 4; S. 422; MIB 4), *some marks, very fine* £250-300

Ex European Ambassador Collection, formed in the 1950s and 1960s.



271

**Tiberius II Constantine (578-582), solidus, Constantinople, 579-582**, facing bust holding globus cruciger and shield, *rev.*, cross potent on four steps; officina Δ; *in ex.*, CONOB, 4.45g (DO 4; S. 422; MIB 4), *scuffed, very fine* £250-300

Ex European Ambassador Collection, formed in the 1950s and 1960s.

All lots are subject to a Buyer's Premium of 20% on the hammer price plus VAT as appropriate. See our Conditions of Business for further details.



272

272

**Tiberius II Constantine (578-582), semissis, Constantinople**, diademed bust right, *rev.*, cross potent on globe; *in ex.*, CONOB, 2.15g (DO 5-6; S. 424; MIB 7), *slightly creased, otherwise good very fine* £150-200

Ex European Ambassador Collection, formed in the 1950s and 1960s.



273

273

**Maurice Tiberius (582-602), solidus, Constantinople, 582-583**, facing bust holding globus cruciger and shield, *rev.*, angel standing facing holding Christogram-topped staff and globus cruciger; officina Δ; *in ex.*, CONOB, 4.39g (DO 3; S. 476; MIB 4), *good very fine* £400-500

Ex European Ambassador Collection, formed in the 1950s and 1960s.



274

274

**Maurice Tiberius (582-602), solidus, Constantinople, 584-602**, facing bust holding globus cruciger, *rev.*, angel standing facing holding Christogram-topped staff and globus cruciger; officina E; *in ex.*, CONOB, 4.38g (DO 5; S. 478; MIB 6), *extremely fine* £300-400

Ex European Ambassador Collection, formed in the 1950s and 1960s.



275

**Maurice Tiberius (582-602), solidus, Constantinople, 584-602**, facing bust holding globus cruciger, *rev.*, angel standing facing holding Christogram-topped staff and globus cruciger; officina B; *in ex.*, CONOB, 4.42g (DO 6b; S. 479; MIB 10), *virtually as struck* £500-700

Ex European Ambassador Collection, formed in the 1950s and 1960s.



276

276

**Maurice Tiberius (582-602), tremissis, Constantinople**, diademed bust right, *rev.*, cross potent; *in ex.*, CONOB, 1.50g (DO 14; S. 488; MIB 20), *extremely fine* £200-250

Ex European Ambassador Collection, formed in the 1950s and 1960s.



277

277

**Maurice Tiberius (582-602), tremissis, Constantinople**, diademed bust right, *rev.*, cross potent; *in ex.*, CONOB, 1.50g (S. 488b; MIB 19), *extremely fine* £200-250

Ex European Ambassador Collection, formed in the 1950s and 1960s.



278

278

**Phocas (602-610), solidus, Constantinople, 603**, facing bust wearing pendilia, holding globus cruciger, *rev.*, angel standing facing holding Christogram-topped staff and globus cruciger; officina I; *in ex.*, CONOB, 3.99g (DO 1; S. 616; MIB 5), *slightly clipped, about extremely fine* £350-400

Ex European Ambassador Collection, formed in the 1950s and 1960s.



279



280

279

**Phocas (602-610), solidus, Constantinople, 603**, facing bust wearing pendilia, holding globus cruciger, *rev.*, angel standing facing holding Christogram-topped staff and globus cruciger; in right field, N; officina Δ; *in ex.*, CONOB, 4.41g (DO 2; S. 617; MIB 6), *partly weak, otherwise good very fine* £350-400

Ex European Ambassador Collection, formed in the 1950s and 1960s.

280

**Phocas (602-610), solidus, Constantinople, 604-607**, facing bust holding globus cruciger, *rev.*, angel standing facing holding Christogram-topped staff and globus cruciger; officina B; *in ex.*, CONOB, 4.50g (DO 5; S. 618; MIB 7; BC CONST I 443b, *same dies*), *virtually as struck* £500-700

Ex European Ambassador Collection, formed in the 1950s and 1960s.



281



282

281

**Phocas (602-610), solidus, Constantinople, 607-609**, facing bust holding globus cruciger, *rev.*, angel standing facing holding Christogram-topped staff and globus cruciger; officina I; *in ex.*, CONOB, 4.47g (DO 10; S. 620; MIB 9, 11), *slight obverse double striking, otherwise extremely fine* £300-400

Ex European Ambassador Collection, formed in the 1950s and 1960s.

282

**Phocas (602-610), solidus, Constantinople, 607-609**, facing bust holding globus cruciger, *rev.*, angel standing facing holding Christogram-topped staff and globus cruciger; in right field, N; officina Z; *in ex.*, CONOB, 4.44g (DO 11; S. 621; MIB 10, 12), *extremely fine* £400-500

Ex European Ambassador Collection, formed in the 1950s and 1960s.



283

**Phocas (602-610), solidus, Constantinople, 603**, facing bust wearing consular robes with pendilia, holding mappa and cross, *rev.*, angel standing facing holding Christogram-topped staff and globus cruciger; officina I; *in ex.*, CONOB, 4.48g (DO 3, S. 622, MIB 1), *extremely fine* £800-1,000

Ex European Ambassador Collection, formed in the 1950s and 1960s.





284

**Phocas (602-610), solidus, Constantinople, 604**, facing bust wearing consular robes, holding mappa and cross, *rev.*, angel standing facing holding Christogram-topped staff and globus cruciger; officina E; *in ex.*, CONOB, 4,35g (DO 4; S. 623; MIB 2; BC CONST I 438e, *same obverse die*), *slightly clipped, virtually as struck* £800-1,000

Ex European Ambassador Collection, formed in the 1950s and 1960s.



285

**Phocas (602-610), semissis, Constantinople**, diademed bust right, *rev.*, Victory advancing right holding wreath and globus cruciger; *in ex.*, CONOB, 2.21g (DO 16; S. 631; MIB 25), *reverse slightly weak, otherwise extremely fine* £300-350

Ex European Ambassador Collection, formed in the 1950s and 1960s.

286

**Phocas (602-610), tremissis, Constantinople**, diademed bust right, *rev.*, cross potent; *in ex.*, CONOB, 1.43g (DO 19; S. 634; MIB 27), *wavy flan, some marks, good very fine* £150-200

Ex European Ambassador Collection, formed in the 1950s and 1960s.



287

**Heraclius (610-641), solidus, Constantinople**, facing bust holding globus cruciger, *rev.*, cross potent on two steps; officina I; *in ex.*, CONOB, 4,36g (DO 1; S. 729; MIB 1a), *double striking on both sides, otherwise extremely fine* £350-450

Ex European Ambassador Collection, formed in the 1950s and 1960s.

288

**Heraclius (610-641), solidus, Constantinople**, facing bust wearing pendilia, holding globus cruciger, *rev.*, cross potent on three steps; in right field, N; officina E; *in ex.*, CONOB, 4,42g (DO 4; S. 732; MIB 6), *minor reverse graffiti, otherwise virtually as struck* £600-700

Ex European Ambassador Collection, formed in the 1950s and 1960s.



289

**Heraclius (610-641), solidus, Constantinople**, facing busts of Heraclius and Heraclius Constantine, above, cross, *rev.*, cross potent on three steps; officina I; *in ex.*, CONOB, 4,44g (DO 13; S. 738; MIB 11, 12), *virtually as struck* £400-600

Ex European Ambassador Collection, formed in the 1950s and 1960s.

290

**Heraclius (610-641), solidus, Constantinople**, facing busts of Heraclius and Heraclius Constantine, *rev.*, cross potent on three steps, 4,44g (DO 13; S. 738), *scuffed on both sides, very fine* £200-250

All lots are subject to a Buyer's Premium of 20% on the hammer price plus VAT as appropriate. See our Conditions of Business for further details.



291

**Heraclius (610-641), solidus, Constantinople**, facing busts of Heraclius and Heraclius Constantine, above, cross, *rev.*, cross potent on three steps; *in ex.*, CONOB, 4.46g (DO 26; S. 749; MIB 29-30), *extremely fine* £300-400

Ex European Ambassador Collection, formed in the 1950s and 1960s.



292

292

**Heraclius (610-641), solidus, Constantinople**, standing figures of Heraclius between Heraclius Constantine and Heraclonas, *rev.*, cross potent on three steps flanked by monogram and I; officina I; *in ex.*, CONOB, 4.43g (DO 36; S. 761; MIB 42), *good very fine* £300-400

Ex European Ambassador Collection, formed in the 1950s and 1960s.



293

293

**Heraclius (610-641), solidus, Constantinople**, standing figures of Heraclius between Heraclius Constantine and Heraclonas, *rev.*, cross potent on three steps flanked by monogram and A; officina Δ; *in ex.*, CONOB, 4.34g (DO 39; S. 764; MIB 45), *small obverse graffiti, slightly clipped, good very fine* £300-400

Ex European Ambassador Collection, formed in the 1950s and 1960s.



294

294

**Heraclius (610-641), solidus, Constantinople**, standing figures of Heraclius between Heraclius Constantine and Heraclonas, *rev.*, cross potent on three steps flanked by monogram and A; officina H; *in ex.*, CONOB, 4.49g (DO 39; S. 764; MIB 45), *extremely fine* £400-500

Ex European Ambassador Collection, formed in the 1950s and 1960s.



295

295

**Heraclius (610-641), solidus, Constantinople**, standing figures of Heraclius between Heraclius Constantine and Heraclonas, *rev.*, cross potent on three steps flanked by monogram and B; officina Δ; *in ex.*, CONOB, 4.44g (DO 41; S. 767; MIB 48), *tiny scuff on obverse, extremely fine* £400-500

Ex European Ambassador Collection, formed in the 1950s and 1960s.



296

**Heraclius (610-641), solidus, Constantinople**, standing figures of Heraclius between Heraclius Constantine and Heraclonas, *rev.*, cross potent on three steps flanked by monogram; officina Δ; *in ex.*, CONOB, 4.49g (DO 43; S. 769; MIB 50), *extremely fine* £400-500

Ex European Ambassador Collection, formed in the 1950s and 1960s.





297

297

**Heraclius (610-641), semissis, Constantinople**, diademed bust right, *rev.*, cross potent on globe; 2.21g (DO 51; S. 784; MIB 72), *good very fine* £200-250

Ex European Ambassador Collection, formed in the 1950s and 1960s.



298

298

**Heraclius (610-641), tremissis, Constantinople**, diademed bust right, *rev.*, cross potent; *in ex.*, CONOB, 1.45g (DO 53b; S. 786; MIB 73a), *minor marks, very fine* £150-200

Ex European Ambassador Collection, formed in the 1950s and 1960s.



299

299

**Heraclius (610-641), tremissis, Constantinople**, diademed bust right, *rev.*, cross potent; *in ex.*, CONOB, 1.47g (DO 53b; S. 786; MIB 73a), *partly weak, extremely fine* £150-200

Ex European Ambassador Collection, formed in the 1950s and 1960s.



300

300

**Heraclius (610-641), hexagram, Constantinople**, enthroned facing figures, above, cross, *rev.*, cross potent on globe and three steps; 6.50g (DO 61; S. 795; MIB 134), *good very fine* £200-250

Ex European Ambassador Collection, formed in the 1950s and 1960s.



301

301

**Heraclius (610-641), hexagram, Constantinople**, enthroned facing figures, above, cross, *rev.*, cross potent on globe and three steps; in right field, K; 6.73g (DO 64; S. 798; MIB 140), *reverse flan flaw, very fine* £200-250

Ex European Ambassador Collection, formed in the 1950s and 1960s.



302

302

**Heraclius (610-641), hexagram, Constantinople**, enthroned facing figures, above, cross, *rev.*, cross potent on globe and three steps; in right field, K; 6.59g (DO 64; S. 798; MIB 140), *flan crack, good very fine* £200-250

Ex European Ambassador Collection, formed in the 1950s and 1960s.



303

**Heraclius (610-641), solidus, uncertain eastern mint**, facing busts of Heraclius and Heraclius Constantine, above, cross, beneath, exergual line, *rev.*, cross potent on three steps; officina I; *in ex.*, CONOB, 4.50g (DO 187; S. 851; MIB 77), *minor reverse marks, otherwise extremely fine* £600-800

Ex European Ambassador Collection, formed in the 1950s and 1960s.





304



305

304

**Constans II (641-668), solidus, Constantinople**, facing bust holding globus cruciger, *rev.*, cross potent on three steps; *in ex.*, CONOBK, 4,35g (DO 2; S. 937; MIB 4a), *edge slightly smoothed, about extremely fine* £300-400

Ex European Ambassador Collection, formed in the 1950s and 1960s.

305

**Constans II (641-668), solidus, Constantinople**, facing bust holding globus cruciger, *rev.*, cross potent on three steps; officina A; *in ex.*, CONOB, 4,44g (DO 1; S. 938; MIB 3b), *virtually mint state* £400-500

Ex European Ambassador Collection, formed in the 1950s and 1960s.



306



307



308

306

**Constans II (641-668), solidus, Constantinople**, facing bust holding globus cruciger, *rev.*, cross potent on three steps; officina N; *in ex.*, CONOB, 4,50g (DO 1; S. 938; MIB 3b), *tiny obverse flan flaw above head, extremely fine* £350-400

Ex European Ambassador Collection, formed in the 1950s and 1960s.

307

**Constans II (641-668), solidus, Constantinople**, facing bust holding globus cruciger, *rev.*, cross potent on three steps; officina Δ; *in ex.*, CONOBC, 4,41g (DO 2; S. 939; MIB 6), *edge partly smoothed, some obverse marks, good very fine* £350-400

Ex European Ambassador Collection, formed in the 1950s and 1960s.

308

**Constans II (641-668), solidus, Constantinople**, facing bust holding globus cruciger, *rev.*, cross potent on three steps; *in right field*, E; officina I; *in ex.*, CONOB, 4,35g (DO 5; S. 942; MIB 9), *edge partly smoothed, faint obverse marks, otherwise extremely fine* £350-400

Ex European Ambassador Collection, formed in the 1950s and 1960s.



309



310

309

**Constans II (641-668), solidus, Constantinople**, facing bust holding globus cruciger, *rev.*, cross potent on three steps; officina Γ; *in ex.*, CONOB, 4,36g (DO 19; S. 956; MIB 23), *slightly clipped, minor reverse marks, about extremely fine* £350-400

Ex European Ambassador Collection, formed in the 1950s and 1960s.

310

**Constans II (641-668), solidus, Constantinople**, facing bust holding globus cruciger, *rev.*, cross potent on three steps; officina E; *in ex.*, CONOB+, 4,35g (DO 21; S. 958; MIB 24), *slightly clipped, about extremely fine* £350-400

Ex European Ambassador Collection, formed in the 1950s and 1960s.



311



312

311

**Constans II (641-668), solidus, Constantinople**, facing busts of Constans II and Constantine IV, between their heads cross, *rev.*, cross potent on three steps; officina Θ, *in ex.*, CONOB, 4,37g (DO 25; S. 959; MIB 26), *about extremely fine*  
£350-400

Ex European Ambassador Collection, formed in the 1950s and 1960s.

312

**Constans II (641-668), solidus, Constantinople**, facing busts of Constans II and Constantine IV, between their heads cross, *rev.*, cross potent on three steps; officina Γ; *in ex.*, CONOB, 4,48g (DO 25; S. 959; MIB 26), *extremely fine*  
£400-450

Ex European Ambassador Collection, formed in the 1950s and 1960s.



313



314

313

**Constans II (641-668), solidus, Constantinople**, facing busts of Constans II and Constantine IV, between their heads cross, *rev.*, long cross potent on globus between facing standing figures of Heraclius and Tiberius; officina Γ; *in ex.*, CONOB, 4,45g (DO 28; S. 962; MIB 29), *reverse flan flaw and scratch, about extremely fine*  
£350-400

Ex European Ambassador Collection, formed in the 1950s and 1960s.

314

**Constans II (641-668), solidus, Constantinople**, facing busts of Constans II and Constantine IV, between their heads cross, *rev.*, long cross potent on three steps between facing standing figures of Heraclius and Tiberius; officina H; *in ex.*, CONOB, 4,41g (DO 30; S. 964; MIB 31), *virtually mint state*  
£400-450

Ex European Ambassador Collection, formed in the 1950s and 1960s.



315



316

315

**Constans II (641-668), solidus, Constantinople**, facing bust holding globus cruciger, officina B, *rev.*, standing figures of Constantine IV between Heraclius and Tiberius; *in ex.*, CONOB, 4,38g (DO 40; S. 972; MIB 39), *some reverse marks, good very fine*  
£300-400

Ex European Ambassador Collection, formed in the 1950s and 1960s.

316

**Constans II (641-668), semissis, Constantinople**, diademed bust right, *rev.*, cross potent on globe; 2.18g (DO 44; S. 983; MIB 50), *extremely fine*  
£200-250

Ex European Ambassador Collection, formed in the 1950s and 1960s.



317



318

317

**Constans II (641-668), hexagram, Constantinople**, facing bust holding globus cruciger, *rev.*, cross potent on globe and three steps; 6.43g (DO (Heraclonas) 4; S. 988; MIB 142), *with obverse double striking, flan crack, very fine*

£150-200

Ex European Ambassador Collection, formed in the 1950s and 1960s.

318

**Constans II (641-668), hexagram, Constantinople**, facing bust holding globus cruciger, *rev.*, cross potent on globe and three steps; 5.56g (DO 50; S. 991; MIB 144), *irregular edge and flan crack, otherwise good very fine*

£200-250

Ex European Ambassador Collection, formed in the 1950s and 1960s.

319

**Constans II (641-668), hexagrams (3), Constantinople**, three varieties, 6.83g, 5.22g, 6.48g; (DO 50, 54 and 55; S. 991, 995 and 996; MIB 144, 149 and 150), *very fine* (3)

£250-300

Ex European Ambassador Collection, formed in the 1950s and 1960s.

320

**Constans II (641-668), hexagrams (3), Constantinople**, three varieties, 6.74g, 6.72g, 4.99g; (DO 50, 54 and 55; S. 991, 995 and 996; MIB 144, 149 and 150), *very fine* (3)

£250-300

Ex European Ambassador Collection, formed in the 1950s and 1960s.



321



322



323

321

**Constantine IV, Pogonatus (668-685), solidus, Constantinople**, helmeted bust facing three-quarters right, holding spear and shield, *rev.*, long cross potent on three steps between facing standing figures of Heraclius and Tiberius; officina Γ; *in ex.*, CONOB, 4.31g (DO 8; S. 1154; MIB 7a), *flan flawed, slightly clipped, otherwise extremely fine*

£300-400

Ex European Ambassador Collection, formed in the 1950s and 1960s.

322

**Constantine IV, Pogonatus (668-685), solidus, Constantinople**, helmeted bust facing three-quarters right, holding spear and shield, *rev.*, long cross potent on three steps between facing standing figures of Heraclius and Tiberius; *in ex.*, CONOB, 4.43g (DO 8; S. 1154; MIB 7a), *about extremely fine*

£300-400

Ex European Ambassador Collection, formed in the 1950s and 1960s.

323

**Constantine IV, Pogonatus (668-685), solidus, Constantinople**, helmeted bust facing three-quarters right, holding spear and shield, *rev.*, cross potent on three steps; officina Δ; *in ex.*, CONOB, 4.31g (DO 12-14; S. 1157; MIB 10), *slightly clipped, extremely fine*

£300-400

Ex European Ambassador Collection, formed in the 1950s and 1960s.





324



325



326

324

**Constantine IV, Pogonatus (668-685), solidus, Constantinople**, helmeted bust facing three-quarters right, holding spear and shield, *rev.*, cross potent on three steps; *in ex.*, CONOBA, 4.51g (DO 15; S. 1158; MIB 11), *reverse partly weak, extremely fine* £400-600

Ex European Ambassador Collection, formed in the 1950s and 1960s.

325

**Constantine IV, Pogonatus (668-685), semissis, Constantinople**, diademed bust right, *rev.*, cross potent on globe; 2.20g (DO 16; S. 1161; MIB 15), *extremely fine* £200-250

Ex European Ambassador Collection, formed in the 1950s and 1960s.

326

**Constantine IV, Pogonatus (668-685), tremissis, Constantinople**, diademed bust right, *rev.*, cross potent; 1.41g (DO 17; S. 1162; MIB 16), *good very fine* £120-150

Ex European Ambassador Collection, formed in the 1950s and 1960s.



327



328

327

**Justinian II, First Reign (685-695), solidus, Constantinople**, facing bust holding globus cruciger, *rev.*, cross potent on three steps; officina A; *in ex.*, CONOB, 4.35g (DO 1; S. 1242; MIB 1), *edge hammered in parts, otherwise extremely fine* £600-800

Ex European Ambassador Collection, formed in the 1950s and 1960s.

328

**Justinian II, First Reign (685-695), solidus, Constantinople**, facing bust holding globus cruciger, *rev.*, cross potent on three steps; officina S; *in ex.*, CONOB, 4.46g (DO 4; S. 1245; MIB 4), *reverse scratch, otherwise extremely fine* £600-800

Ex European Ambassador Collection, formed in the 1950s and 1960s.



329



330

329

**Justinian II, First Reign (685-695), solidus, Constantinople**, facing bust holding globus cruciger, *rev.*, cross potent on three steps; officina Z (?); *in ex.*, CONOB, 4.35g (DO 5; S. 1246; MIB 6), *partly weak, about extremely fine* £400-600

Ex European Ambassador Collection, formed in the 1950s and 1960s.

330

**Justinian II, First Reign (685-695), solidus, Constantinople**, facing bust holding globus cruciger, *rev.*, cross potent on three steps; officina S; *in ex.*, CONOB, 4.42g (DO 6; S. 1247; MIB 7), *some faint marks, extremely fine* £500-700

Ex European Ambassador Collection, formed in the 1950s and 1960s.

All lots are subject to a Buyer's Premium of 20% on the hammer price plus VAT as appropriate. See our Conditions of Business for further details.



331

**Justinian II, First Reign (685-695), solidus, Constantinople**, facing bust of Christ with cross behind head, *rev.*, standing figure of Justinian holding long cross potent on two steps and akakia; officina Γ; *in ex.*, CONOP (?), 4.45g (DO 7; S. 1248; MIB 8), *some marks, otherwise extremely fine* £1,800-2,200

Ex European Ambassador Collection, formed in the 1950s and 1960s.



332

**Justinian II, First Reign (685-695), solidus, Constantinople**, facing bust of Christ with cross behind head, *rev.*, standing figure of Justinian holding long cross potent on two steps and akakia; 4.26g (DO 7; S. 1248; MIB 8), *slightly clipped, about extremely fine* £1,200-1,500

Ex European Ambassador Collection, formed in the 1950s and 1960s.



333

**Justinian II, First Reign (685-695), semissis, Constantinople**, facing bust holding globus cruciger, *rev.*, cross potent on globe; 2.13g (DO 9; S. 1251; MIB 11), *obverse with flan flaws, about extremely fine* £250-300

Ex European Ambassador Collection, formed in the 1950s and 1960s.



334

**Justinian II, First Reign (685-695), tremissis, Constantinople**, facing bust holding globus cruciger, *rev.*, cross potent; 1.27g (DO 13; S. 1255; MIB 15), *good very fine* £400-600

Ex European Ambassador Collection, formed in the 1950s and 1960s.



335

**Justinian II, First Reign (685-695), tremissis, Constantinople**, facing bust of Christ with cross behind head, *rev.*, standing figure of Justinian holding long cross potent on globus and step; 1.41g (DO 14; S. 1256; MIB 16) *slightly creased and several marks, very fine* £300-400

Ex European Ambassador Collection, formed in the 1950s and 1960s.

All lots are subject to a Buyer's Premium of 20% on the hammer price plus VAT as appropriate. See our Conditions of Business for further details.





336

**Leontius (695-698), solidus, Constantinople**, facing bust holding akakia and globus cruciger, *rev.*, cross potent on three steps; officina I; *in ex.*, CONOB, 4.49g (DO 1; S. 1330; MIB 1) *virtually as struck* £1,500-2,000

Ex European Ambassador Collection, formed in the 1950s and 1960s.



337

**Leontius (695-698), solidus, Constantinople**, facing bust holding akakia and globus cruciger, *rev.*, cross potent on three steps; officina E; *in ex.*, CONOB, 4.48g (DO 1; S. 1330; MIB 1) *virtually as struck* £1,500-2,000

Ex European Ambassador Collection, formed in the 1950s and 1960s.



338

**Leontius (695-698), solidus, Constantinople**, facing bust holding akakia and globus cruciger, *rev.*, cross potent on three steps; officina A; *in ex.*, CONOB, 4.45g (DO 1; S. 1330; MIB 1) *reverse die crack, extremely fine* £1,200-1,500

Ex European Ambassador Collection, formed in the 1950s and 1960s.



339

**Leontius (695-698), solidus, Constantinople**, facing bust holding akakia and globus cruciger, *rev.*, cross potent on three steps; officina I; *in ex.*, CONOB, 4.45g (DO 1; S. 1330; MIB 1) *extremely fine* £1,200-1,500

Ex European Ambassador Collection, formed in the 1950s and 1960s.

All lots are subject to a Buyer's Premium of 20% on the hammer price plus VAT as appropriate. See our Conditions of Business for further details.





340

340

**Tiberius III (698-705), solidus, Constantinople**, bust facing holding spear and shield, *rev.*, cross potent on three steps; officina H; *in ex.*, CONOB, 4.42g (DO 1; S. 1360; MIB 1), *tiny reverse marks, good extremely fine* £500-700

Ex European Ambassador Collection, formed in the 1950s and 1960s.



341

341

**Tiberius III (698-705), solidus, Constantinople**, bust facing holding spear and shield, *rev.*, cross potent on three steps; officina A; *in ex.*, CONOB, 4.44g (DO 1; S. 1360; MIB 1), *virtually as struck* £500-700

Ex European Ambassador Collection, formed in the 1950s and 1960s.



342

342

**Tiberius III (698-705), solidus, Constantinople**, bust facing holding spear and shield, *rev.*, cross potent on three steps; officina Δ; *in ex.*, CONOB, 4.41g (DO 1; S. 1360; MIB 1), *tiny mark above right eye, reverse scratch next to officina, otherwise extremely fine* £400-600

Ex European Ambassador Collection, formed in the 1950s and 1960s.



343

343

**Tiberius III (698-705), solidus, Constantinople**, bust facing holding spear and shield, *rev.*, cross potent on three steps; officina B; *in ex.*, CONOB, 4.46g (DO 1; S. 1360; MIB 1), *tiny scratches on spear, tiny reverse flan flaw, otherwise extremely fine (same dies as next lot)* £400-600

Ex European Ambassador Collection, formed in the 1950s and 1960s.



344

344

**Tiberius III (698-705), solidus, Constantinople**, bust facing holding spear and shield, *rev.*, cross potent on three steps; officina B; *in ex.*, CONOB, 4.50g (DO 1; S. 1360; MIB 1), *tiny edge mark, otherwise extremely fine (same dies as previous lot)* £400-600

Ex European Ambassador Collection, formed in the 1950s and 1960s.



345

345

**Tiberius III (698-705), solidus, Constantinople**, bust facing holding spear and shield, *rev.*, cross potent on three steps; officina B; *in ex.*, CONOB, 4.47g (DO 1; S. 1360; MIB 1), *reverse scratch, otherwise extremely fine* £400-600

Ex European Ambassador Collection, formed in the 1950s and 1960s.



346

346

**Tiberius III (698-705), solidus, Constantinople**, bust facing holding spear and shield, *rev.*, cross potent on three steps; officina E; *in ex.*, CONOB, 4.47g (DO 1; S. 1360; MIB 1), *faint reverse marks, otherwise extremely fine* £400-600

Ex European Ambassador Collection, formed in the 1950s and 1960s.



347

347

**Tiberius III (698-705), tremissis, Constantinople**, bust facing holding spear and shield, *rev.*, cross potent; *in ex.*, CONOB, 1.34g (DO 4; S. 1363; MIB 8), *partly weak, edge cut, very fine* £150-200

Ex European Ambassador Collection, formed in the 1950s and 1960s.

All lots are subject to a Buyer's Premium of 20% on the hammer price plus VAT as appropriate. See our Conditions of Business for further details.



348

**Justinian II, Second Reign (705-711), solidus, Constantinople**, facing bust of Christ with cross behind head, *rev.*, bust of Justinian facing holding cross potent on three steps and globus cruciger inscribed PAX; 4.48g (DO 1; S. 1413; MIB 1), *virtually as struck (same obverse die as following two lots)* £2,000-3,000

Ex European Ambassador Collection, formed in the 1950s and 1960s.



349

**Justinian II, Second Reign (705-711), solidus, Constantinople**, facing bust of Christ with cross behind head, *rev.*, bust of Justinian facing holding cross potent on three steps and globus cruciger inscribed PAX; 4.44g (DO 1; S. 1413; MIB 1), *reverse flan flaw, tiny graffiti on the top right field, extremely fine (same obverse die as following and previous lots)* £2,000-3,000

Ex European Ambassador Collection, formed in the 1950s and 1960s.



350

**Justinian II, Second Reign (705-711), solidus, Constantinople**, facing bust of Christ with cross behind head, *rev.*, bust of Justinian facing holding cross potent on three steps and globus cruciger inscribed PAX; 4.46g (DO 1; S. 1413; MIB 1), *virtually as struck (same obverse die as previous two lots)* £2,000-3,000

Ex European Ambassador Collection, formed in the 1950s and 1960s.



351

**Justinian II, Second Reign (705-711), solidus, Constantinople**, facing bust of Christ with cross behind head, *rev.*, bust of Justinian facing holding cross potent on three steps and globus cruciger inscribed PAX; 4.42g (DO 1; S. 1413; MIB 1), *virtually as struck* £2,500-3,000

Ex European Ambassador Collection, formed in the 1950s and 1960s.

All lots are subject to a Buyer's Premium of 20% on the hammer price plus VAT as appropriate. See our Conditions of Business for further details.





352

**Justinian II, Second Reign (705-711), solidus, Constantinople**, facing bust of Christ with cross behind head, *rev.*, Justinian II and Tiberius holding between them a long cross potent on two steps; 4.43g (DO 2a; S. 1414; MIB 2a), *obverse weak striking, otherwise virtually mint sate*

£1,500-2,000

Ex European Ambassador Collection, formed in the 1950s and 1960s.



353

**Justinian II, Second Reign (705-711), tremissis, Constantinople**, facing bust of Christ with cross behind head, *rev.*, Justinian II and Tiberius holding between them a long cross potent; 1.47g (DO 6b; S. 1421; MIB 6b), *slightly wavy flan, very fine*

£500-700

Ex European Ambassador Collection, formed in the 1950s and 1960s.



354

**Philippicus, Bardanes (711-713), solidus, Constantinople**, bust facing holding globus cruciger and eagle tipped sceptre, *rev.*, cross potent on three steps; officina Θ; *in ex.*, CONOB, 4.34g (DO 1; S. 1447; MIB 1), *slight edge marks, extremely fine*

£1,400-1,600

Ex European Ambassador Collection, formed in the 1950s and 1960s.



355

**Anastasius II, Artemius (713-715), solidus, Constantinople**, bust facing holding globus cruciger and akakia, *rev.*, cross potent on three steps; officina I; *in ex.*, CONOB, 4.38g (DO 2; S. 1463; MIB 2), *very slightly clipped, virtually as struck*

£1,500-2,000

Ex European Ambassador Collection, formed in the 1950s and 1960s.

All lots are subject to a Buyer's Premium of 20% on the hammer price plus VAT as appropriate. See our Conditions of Business for further details.





356

**Anastasius II, Artemius (713-715), tremissis, Constantinople**, bust facing holding globus cruciger and akakia, *rev.*, cross potent; *in ex.*, CONOB, 1.09g (DO 5; S. 1467; MIB 7), *slightly creased and clipped, very fine* £150-200

Ex European Ambassador Collection, formed in the 1950s and 1960s.



357

**Anastasius II, Artemius (713-715), tremissis, Constantinople**, bust facing holding globus cruciger and akakia, *rev.*, cross potent; *in ex.*, CONOB, 1.44g (DO 5; S. 1467; MIB 7), *slightly wavy flan, obverse scratch on right field, reverse scratch on cross, otherwise about extremely fine* £400-600

Ex European Ambassador Collection, formed in the 1950s and 1960s.



358

**Theodosius III of Adramytium (715-717), solidus, Constantinople**, bust facing holding globus cruciger and akakia, *rev.*, cross potent on three steps; officina H; *in ex.*, CONOB, 4.42g (DO 1; S. 1487; MIB 1), *reverse from rusty die, faint field marks, otherwise virtually as struck* £5,000-7,000

Ex European Ambassador Collection, formed in the 1950s and 1960s.



359

**Leo III the Isaurian (717-741), solidus, Constantinople**, bust facing holding globus cruciger and akakia, *rev.*, cross potent on three steps; officina H; *in ex.*, CONOB, 4.38g (DO 1; S. 1502; MIB 1), *tiny mark in reverse field, edge slightly smoothed, otherwise virtually as struck* £1,000-1,500

Ex European Ambassador Collection, formed in the 1950s and 1960s.



360

**Leo III the Isaurian (717-741), solidus, Constantinople**, bust facing holding globus cruciger and akakia; officina Δ, *rev.*, facing bust of Constantine V holding globus cruciger and akakia 4.44g (DO 3-7; S. 1504; MIB 1), *obverse faint scratch, reverse small faint field marks, some edge marks, otherwise extremely fine* £400-600

Ex European Ambassador Collection, formed in the 1950s and 1960s.



361

361

**Leo III the Isaurian (717-741), solidus, Constantinople**, bust facing holding globus cruciger and akakia; *rev.*, facing bust of Constantine V holding globus cruciger and akakia 4.46g (DO 3-7; S. 1504; MIB 1), *partly weak, a few faint marks, otherwise virtually as struck* £600-800

Ex European Ambassador Collection, formed in the 1950s and 1960s.



362

362

**Leo III the Isaurian (717-741), tremissis, Constantinople**, bust facing holding globus cruciger and akakia, *rev.*, facing bust of Constantine V holding cross potent and akakia; 1.47g (DO 15-18; S. 1508), *slightly wavy flan, good very fine* £250-300

Ex European Ambassador Collection, formed in the 1950s and 1960s.



363

363

**Constantine V, Copronymus (741-775), solidus, Constantinople**, bust facing holding cross potent and akakia, *rev.*, facing bust of Leo III holding cross potent and akakia; 4.50g (DO 1; S. 1550), *virtually as struck* £500-700

Ex European Ambassador Collection, formed in the 1950s and 1960s.



364

364

**Constantine V, Copronymus (741-775), solidus, Constantinople**, facing busts of Constantine V and Leo IV, above cross, *rev.*, facing bust of Leo III holding cross potent; 4.39g (DO 1; S. 1551), *good very fine* £400-600

Ex European Ambassador Collection, formed in the 1950s and 1960s.



365

365

**Leo IV the Khazar (775-780), solidus, Constantinople**, facing busts of Leo IV and Constantine VI wearing chlamys, pellet between their heads, above cross, *rev.*, facing busts of Leo III and Constantine V wearing loros, pellet between their heads, above cross; 4.45g (DO 1; S. 1583), *very fine* £300-500

Ex European Ambassador Collection, formed in the 1950s and 1960s.



366

366

**Leo IV the Khazar (775-780), solidus, Constantinople**, seated figure of Leo IV and Constantine VI wearing chlamys, above cross, *rev.*, facing busts of Leo III and Constantine V wearing loros, pellet between their heads, above cross; 4.49g (DO 2; S. 1584), *good very fine* £500-700

Ex European Ambassador Collection, formed in the 1950s and 1960s.

All lots are subject to a Buyer's Premium of 20% on the hammer price plus VAT as appropriate. See our Conditions of Business for further details.





367

367

**Leo IV the Khanzar (775-780), solidus, Constantinople**, seated figure of Leo IV and Constantine VI wearing chlamys, above cross, *rev.*, facing busts of Leo III and Constantine V wearing loros, pellet between their heads, above cross; 4.43g (DO 2; S. 1584), *a few marks, about extremely fine* £600-800

Ex European Ambassador Collection, formed in the 1950s and 1960s.



368

368

**Leo IV the Khanzar (775-780), miliaresion, Constantinople**, cross potent on three steps, *rev.*, inscription in five lines, LEON / S CONST / ANTINE E / C Θ EU BA / SILIS; 1.70g (DO 3; S. 1585), *partly clipped, a few marks, good very fine* £100-150

Ex European Ambassador Collection, formed in the 1950s and 1960s.



369

**Constantine VI and Irene (780-797), solidus, Constantinople**, facing busts of Constantine VI holding globus cruciger and Irene holding cruciform sceptre, pellet between their heads, above cross, *rev.*, seated figures of Leo III, Constantine V and Leo IV; 4.44g (DO 2; S. 1591), *good very fine* £700-1,000

Ex European Ambassador Collection, formed in the 1950s and 1960s.



370

**Constantine VI and Irene (780-797), solidus, Constantinople**, facing bust of Irene holding globus cruciger and cruciform sceptre, *rev.*, facing bust of Constantine VI holding globus cruciger and akakia; 4.31g (DO 3; S. 1594), *slightly weak and clipped, otherwise good very fine* £1,000-1,500

Ex European Ambassador Collection, formed in the 1950s and 1960s.



371

**Constantine VI and Irene (780-797), follis, Constantinople**, facing bust of Irene holding globus cruciger and cruciform sceptre, *rev.*, facing bust of Constantine VI holding globus cruciger and akakia; in right field, cross and pellet; in ex., large M between X and N; 3.43g (DO 7; S. 1598), *good very fine* £100-150

Ex European Ambassador Collection, formed in the 1950s and 1960s.

All lots are subject to a Buyer's Premium of 20% on the hammer price plus VAT as appropriate. See our Conditions of Business for further details.





372

**Irene (797-802), solidus, Constantinople**, facing bust of Irene holding globus cruciger and cruciform sceptre, *rev.*, facing bust of Irene holding globus cruciger and cruciform sceptre; in left field, pellet; legend ends Θ; 4.38g (DO 1; S. 1599), *obverse scratch on left field, otherwise about extremely fine* £1,500-2,000

Ex European Ambassador Collection, formed in the 1950s and 1960s.



373

**Irene (797-802), follis, Constantinople**, facing bust of Irene holding globus cruciger and cruciform sceptre, *rev.*, large M between X/X/X and N/N/N, above cross, below A; 5.41g (DO 2; S. 1600), *good very fine* £200-300

Ex European Ambassador Collection, formed in the 1950s and 1960s.



374

**Nicephorus I (802-811), solidus, Constantinople**, facing bust holding potent cross and akakia, *rev.*, cross potent on three steps; 4.53g (DO 1; S. 1603), *tiny obverse graffiti on right field, some edge marks, about extremely fine* £1,000-1,500

Ex European Ambassador Collection, formed in the 1950s and 1960s.



375

**Nicephorus I (802-811), solidus, Constantinople**, facing bust holding potent cross and akakia; in left field, pellet, *rev.*, facing bust of Stauracius holding globus cruciger and akakia; 4.41g (DO 2; S. 1604), *tiny obverse faint scratches, otherwise virtually as struck* £600-800

Ex European Ambassador Collection, formed in the 1950s and 1960s.

376

**Nicephorus I (802-811), solidus, Constantinople**, facing bust holding potent cross and akakia, *rev.*, facing bust of Stauracius holding globus cruciger and akakia; 4.43g (DO 2; S. 1604), *good very fine* £400-600

Ex European Ambassador Collection, formed in the 1950s and 1960s.



377

**Michael I, Rhangabe (802-811), solidus, Constantinople**, facing bust holding potent cross and akakia; in left field, pellet, *rev.*, facing bust of Theophylactus holding globus cruciger and cruciform sceptre; 4.39g (DO 1; S. 1615), *spade mark on obverse, otherwise about extremely fine* £2,000-2,500

Ex European Ambassador Collection, formed in the 1950s and 1960s.



378

**Leo V, the Armenian (813-820), solidus, Constantinople**, facing bust holding potent cross and akakia; in left field, pellet, *rev.*, facing bust of Constantine holding globus cruciger and akakia; 4.46g (DO 2-3; S. 1627), *obverse edge scraped at top right, about extremely fine* £700-1,000

Ex European Ambassador Collection, formed in the 1950s and 1960s.

379

**Leo V, the Armenian (813-820), miliaresion, Constantinople**, cross potent on three steps; single border, *rev.*, inscription in five lines, +LEON / S CONSTAN / TINE EC ΘEU / basilis RO / MAION; 2.18g (DO 4-5; S. 1628), *a few obverse marks, good very fine* £70-100

Ex European Ambassador Collection, formed in the 1950s and 1960s.



380

**Michael II the Amorian (820-829), solidus, Constantinople**, facing bust holding potent cross and akakia; in left field, star, *rev.*, facing bust of Theophilus holding globus cruciger and cruciform sceptre; 4.49g (DO 2-5; S. 1640), *good very fine* £700-1,000

Ex European Ambassador Collection, formed in the 1950s and 1960s.

381

**Michael II the Amorian (820-829), miliaresion, Constantinople**, cross potent on three steps; triple border, *rev.*, inscription in five lines, +MIXA / HL S ΘEOFI / LE EC ΘEU / basilis RO / MAION; 2.10g (DO 6; S. 1641), *toned, extremely fine* £200-300

Ex European Ambassador Collection, formed in the 1950s and 1960s.

382

**Michael II the Amorian (820-829), miliaresion, Constantinople**, cross potent on three steps; triple border, *rev.*, inscription in five lines, +MIXA / HL S ΘEOFI / LE EC ΘEU / basilis RO / MAION; 19.18g (DO 6; S. 1641), *edge losses, about extremely fine* £200-300

Ex European Ambassador Collection, formed in the 1950s and 1960s.

All lots are subject to a Buyer's Premium of 20% on the hammer price plus VAT as appropriate. See our Conditions of Business for further details.





383

**Theophilus (829-842), solidus, Constantinople**, facing bust holding patriarchal cross and akakia; in left field, star, *rev.*, facing busts of Michael II and Constantine, pellet between their heads, above cross; 4.43g (DO 3; S. 1653), *some reverse scratches and slightly double strike, good very fine* £400-600

Ex European Ambassador Collection, formed in the 1950s and 1960s.



384

**Theophilus (829-842), solidus, Constantinople**, facing bust holding globus cruciger and cruciform sceptre, *rev.*, patriarchal cross on three steps; 4.41g (DO 1; S. 1655), *reverse faint scratch on left of cross, otherwise extremely fine* £2,000-3,000

Ex European Ambassador Collection, formed in the 1950s and 1960s.



385

386

385

**Theophilus (829-842), miliaresion, Constantinople**, cross potent on three steps; triple border, *rev.*, inscription in six lines, +ΘΕΟΦΙ / LOS DULOS / XRISTU S PIS / TOS EN AUTO / BASILEUS RO / MAION; 2.39g (DO 10; S. 1661), *good very fine* £150-200

Ex European Ambassador Collection, formed in the 1950s and 1960s.

386

**Theophilus (829-842), miliaresion, Constantinople**, cross potent on three steps; triple border, *rev.*, inscription in five lines, +ΘΕΟ / FILOS S MI / XAHL EC ΘΕ / BASILIS RO / MAION; 2.11g (DO 12; S. 1664), *about extremely fine* £200-300

Ex European Ambassador Collection, formed in the 1950s and 1960s.



387

**Theophilus (829-842), solidus, Syracuse**, bust facing holding cross potent, *rev.*, bust facing holding globus cruciger; 3.74g (DO 18; S. 1671), *reverse scuff mark and slight double striking, otherwise about as struck* £500-700

Ex European Ambassador Collection, formed in the 1950s and 1960s.

All lots are subject to a Buyer's Premium of 20% on the hammer price plus VAT as appropriate. See our Conditions of Business for further details.





388

**Theophilus (829-842), semissis, Syracuse**, bust facing holding globus cruciger, wearing chlamys, *rev.*, bust facing holding globus cruciger, wearing loros; 1.88g (DO 26a; S. 1673), *virtually as struck* £500-700

Ex European Ambassador Collection, formed in the 1950s and 1960s.



389

**Michael III the Drunkard (842-867), solidus, Constantinople**, facing bust of Christ with cross behind head, *rev.*, facing busts of Michael III and Theodora, between them pellet, above cross; 4.44g (DO 2; S. 1687), *good very fine* £3,000-4,000

Ex European Ambassador Collection, formed in the 1950s and 1960s.



390

**Michael III the Drunkard (842-867), solidus, Constantinople**, facing bust of Christ with cross behind head, *rev.*, facing bust of Michael III holding labarum and akakia; 4.34g (DO 3; S. 1688), *obverse faint scratch on right field, edge nick at reverse 6 o'clock, otherwise about extremely fine* £3,000-5,000

Ex European Ambassador Collection, formed in the 1950s and 1960s.



391



392

391

**Michael III the Drunkard (842-867), miliaresion, Constantinople**, cross potent on three steps, beneath pellet; triple border, *rev.*, inscription in five lines, +MIXA / HL PISTOS / MEGAS BA / SILEUS RO / MAION; 2.10g (DO 7; S. 1692), *obverse slight double striking, otherwise extremely fine* £200-300

Ex European Ambassador Collection, formed in the 1950s and 1960s.

392

**Basil I the Macedonian (867-886), solidus, Constantinople**, Christ enthroned facing, *rev.*, facing busts of Basil and Constantine holding between them patriarchal cross; 4.48g (DO 2; S. 1704), *extremely fine* £600-800

Ex European Ambassador Collection, formed in the 1950s and 1960s.

All lots are subject to a Buyer's Premium of 20% on the hammer price plus VAT as appropriate. See our Conditions of Business for further details.



393

393

**Basil I the Macedonian (867-886), miliaresion, Constantinople**, cross potent on three steps, beneath globe; triple border, *rev.*, inscription in six lines, +BASI / LIOS CE / CONSTAN / TIN' PISTV / BASILIS / ROMEO'; 2.90g (DO 7; S. 1708), *obverse slight double striking, good extremely fine* £120-150

Ex European Ambassador Collection, formed in the 1950s and 1960s.



394

394

**Leo VI the Wise (886-912), miliaresion, Constantinople**, cross potent on three steps, beneath globe; triple border, *rev.*, inscription in five lines, +LEON CE / CONSTANTI / N' EN X'Ω EV / SEBIS bASI / LI' ROM', triple border ornamented with eight globules; 2.99g (DO 4; S. 1727), *very fine* £100-120

Ex European Ambassador Collection, formed in the 1950s and 1960s.



395

**Constantine VII, Porphyrogenitus (913-359), solidus, Constantinople**, Christ enthroned facing, *rev.*, facing busts of Constantine VII and Romanus I, holding between them patriarchal cross; 4.47g (DO 3; S. 1741), *edge smoothed in parts, some reverse marks, otherwise extremely fine* £2,000-3,000

Ex European Ambassador Collection, formed in the 1950s and 1960s.



396

**Constantine VII, Porphyrogenitus (913-359), solidus, Constantinople**, Romanus I standing facing, holding globus cruciger, being crowned by Christ standing at right, *rev.*, facing busts of Constantine VII and Christopher, holding between them patriarchal cross; 4.32g (DO 6; S. 1743), *slightly clipped, very fine* £1,000-1,200

Ex European Ambassador Collection, formed in the 1950s and 1960s.



397

**Constantine VII, Porphyrogenitus (913-359), solidus, Constantinople**, Christ enthroned facing, *rev.*, facing busts of Romanus I and Christopher, holding between them patriarchal cross; 4.44g (DO 7; S. 1745), *faint reverse marks, otherwise virtually as struck* £600-800

Ex European Ambassador Collection, formed in the 1950s and 1960s.

All lots are subject to a Buyer's Premium of 20% on the hammer price plus VAT as appropriate. See our Conditions of Business for further details.





398

**Constantine VII, Porphyrogenitus (913-359), solidus, Constantinople**, Christ enthroned facing, *rev.*, Romanus II and Constantine VII, standing facing, each holding globus cruciger and patriarchal cross between them; 4.40g (DO 10; S. 1749), *obverse with two scrapes to right of Christ, otherwise extremely fine* £1,500-2,000

Ex European Ambassador Collection, formed in the 1950s and 1960s.



399

**Constantine VII, Porphyrogenitus (913-359), solidus, Constantinople**, Christ enthroned facing, *rev.*, facing busts of Constantine VII and Romanus II, holding between them patriarchal cross; 4.38g (DO 14; S. 1750), *obverse faint scrape to right of Christ, reverse scuff mark, otherwise about extremely fine* £500-700

Ex European Ambassador Collection, formed in the 1950s and 1960s.



400

**Constantine VII, Porphyrogenitus (913-359), solidus, Constantinople**, facing bust of Christ, *rev.*, facing busts of Constantine VII and Romanus II, holding between them patriarchal cross; 4.33g (DO 15; S. 1751), *virtually as struck* £800-1,000

Ex European Ambassador Collection, formed in the 1950s and 1960s.



401



402

401

**Constantine VII, Porphyrogenitus (913-359), solidus, Constantinople**, facing bust of Christ, *rev.*, facing busts of Constantine VII and Romanus II, holding between them patriarchal cross; 4.42g (DO 15; S. 1751), *extremely fine* £500-700

Ex European Ambassador Collection, formed in the 1950s and 1960s.

402

**Constantine VII, Porphyrogenitus (913-359), solidus, Constantinople**, facing bust of Christ, *rev.*, facing busts of Constantine VII and Romanus II, holding between them patriarchal cross; 4.31g (DO 15; S. 1751), *some edge marks, very fine* £300-500

Ex European Ambassador Collection, formed in the 1950s and 1960s.

All lots are subject to a Buyer's Premium of 20% on the hammer price plus VAT as appropriate. See our Conditions of Business for further details.



403



404

403

**Constantine VII, Porphirogenitus (913-359), miliaresion, Constantinople**, cross potent on three steps, containing portrait of Romanus I, below left, R/Ω and right, m/A, *rev.*, inscription in five lines, above and below cross, +ROMAnO' / CONSTANT' / STEFANOS / CE CONSTA' / EN XW b' R'; 2.78g (DO 20; S. 1755), *about extremely fine*

£200-300

Ex European Ambassador Collection, formed in the 1950s and 1960s.

404

**Constantine VII, Porphirogenitus (913-359), miliaresion, Constantinople**, cross crosslet on three steps, beneath globe; triple border ornamented with sixteen globules, *rev.*, inscription in five lines, +CONST' T' / ΠΟΡΦΥΡΟΣ' / CE ROMANO / EN XW EVSEB' / b' RWMEO, triple border ornamented with sixteen globules; 2.93g (DO 21; S. 1757), *about extremely fine*

£200-250

Ex European Ambassador Collection, formed in the 1950s and 1960s.



405

**Nicephorus II, Phocas (963-969), histamenon, Constantinople**, facing bust of Christ, *rev.*, facing busts of Nicephorus and Basil II, holding between them long patriarchal cross; 4.45g (DO 1; S. 1776), *extremely fine*

£600-800

Ex European Ambassador Collection, formed in the 1950s and 1960s.



406

**Nicephorus II, Phocas (963-969), histamenon, Constantinople**, facing bust of Christ, *rev.*, facing busts of Nicephorus and Basil II, holding between them long patriarchal cross; 4.41g (DO 2; S. 1777), *scratch on obverse right field, otherwise virtually as struck*

£1,000-1,500

Ex European Ambassador Collection, formed in the 1950s and 1960s.



407

**Nicephorus II, Phocas (963-969), histamenon, Constantinople**, facing bust of Christ, *rev.*, facing busts of Virgin and Nicephorus, holding between them long patriarchal cross; 4.47g (DO 4; S. 1778), *virtually as struck*

£1,000-1,500

Ex European Ambassador Collection, formed in the 1950s and 1960s.





408

**Nicephorus II, Phocas (963-969), histamenon, Constantinople**, facing bust of Christ, *rev.*, facing busts of Virgin and Nicephorus, holding between them long patriarchal cross; 4.39g (DO 4; S. 1778), *edge nick at 2 o'clock, reverse tiny scuff mark on emperors' wrist, otherwise virtually as struck* £800-1,200

Ex European Ambassador Collection, formed in the 1950s and 1960s.



409

**Nicephorus II, Phocas (963-969), miliaresion, Constantinople**, cross crosslet on globus above two steps; at the centre of cross, medallion with facing bust of Nicephorus, triple border ornamented with eight globules, *rev.*, inscription in five lines, above and below cross, +NICHF' / En XΩ AVTO / CRAT' EVSEB' / bASILEVS / RΩMAIΩ', triple border ornamented with eight globules; 2.71g (DO 6; S. 1781), *slight double striking, otherwise good very fine* £150-200

Ex European Ambassador Collection, formed in the 1950s and 1960s.

410

**John I, Tzimisces (969-976), histamenon, Constantinople**, facing bust of Christ, *rev.*, facing bust of John, Manus Dei above, holding long patriarchal cross and crowned by Virgin standing at right; 4.31g (DO 3; S. 1785), *scratch on reverse, extremely fine* £700-900

Ex European Ambassador Collection, formed in the 1950s and 1960s.

411

**John I, Tzimisces (969-976), miliaresion, Constantinople**, cross crosslet on globus above two steps; at centre medallion with facing bust of John, triple border ornamented with eight globules, *rev.*, inscription in five lines, above and below cross, +IΩAnn' / En XΩ AVTO / CRAT' EVSEB' / bASILEVS / RΩMAIΩ', triple border ornamented with eight globules; 2.64g (DO 7; S. 1792), *about extremely fine* £200-250

Ex European Ambassador Collection, formed in the 1950s and 1960s.



412

**Basil II, Bulgaroktonos (976-1025), histamenon, Constantinople**, facing bust of Christ, *rev.*, facing busts of Basil II and Constantine, holding between them long patriarchal cross; 4.42g (DO 1; S. 1795), *slightly wavy edge, otherwise about extremely fine* £600-800

Ex European Ambassador Collection, formed in the 1950s and 1960s.

413

**Basil II, Bulgaroktonos (976-1025), histamenon, Constantinople**, facing bust of Christ, *rev.*, facing busts of Basil II and Constantine, holding between them long patriarchal cross ornamented with triangle; 4.38g (DO 2; S. 1796), *obverse S graffiti, some other minor marks, about extremely fine* £500-700

Ex European Ambassador Collection, formed in the 1950s and 1960s.

All lots are subject to a Buyer's Premium of 20% on the hammer price plus VAT as appropriate. See our Conditions of Business for further details.



414

**Basil II, Bulgaroktonos (976-1025), histamenon, Constantinople**, facing bust of Christ wearing nimbus ornamented with two crescents, *rev.*, facing busts of Basil II and Constantine, holding between them long cross; triple border; 4.37g (DO 6; S. 1800), *virtually as struck* £1,500-2,000

Ex European Ambassador Collection, formed in the 1950s and 1960s.



415

**Basil II, Bulgaroktonos (976-1025), histamenon, Constantinople**, facing bust of Christ wearing nimbus ornamented with two crescents, *rev.*, facing busts of Basil II and Constantine, holding between them long cross; triple border; 4.42g (DO 6; S. 1800), *extremely fine* £1,000-1,200

Ex European Ambassador Collection, formed in the 1950s and 1960s.



416

**Basil II, Bulgaroktonos (976-1025), histamenon, Constantinople**, facing bust of Christ wearing nimbus ornamented with two crescents, *rev.*, facing busts of Basil II and Constantine, holding between them long cross; triple border; 4.38g (DO 6; S. 1800), *obverse faint graffiti on right filed, about extremely fine* £600-800

Ex European Ambassador Collection, formed in the 1950s and 1960s.



417

**Basil II, Bulgaroktonos (976-1025), histamenon, Constantinople**, facing bust of Christ wearing nimbus ornamented with two crescents, *rev.*, facing busts of Basil II and Constantine, holding between them long cross; triple border; 4.42g (DO 6; S. 1800), *edge bend, otherwise about extremely fine* £600-800

Ex European Ambassador Collection, formed in the 1950s and 1960s.

All lots are subject to a Buyer's Premium of 20% on the hammer price plus VAT as appropriate. See our Conditions of Business for further details.





418



419

418

**Basil II, Bulgaroktonos (976-1025), miliaresion, Constantinople**, cross crosslet on globus above four steps; facing busts of Basil on left and Constantine on right of cross, *rev.*, inscription in five lines, above and below -Θ-, +bASIL, / C CΩnSTAn, / ΠOPFVROS, / ΠICTV bAS' / ΡΩmAIΩ', triple border; 2.73g (DO 20; S. 1812), *good very fine* £200-300

Ex European Ambassador Collection, formed in the 1950s and 1960s.

419

**Constantine VIII (1025-1028), histamenon, Constantinople**, facing bust of Christ wearing nimbus ornamented with two crescents, *rev.*, facing bust of Constantine VIII, holding labarum with pellet on shaft and akakia; triple border; 4.31g (DO 2.1; S. 1815), *about extremely fine* £600-800

Ex European Ambassador Collection, formed in the 1950s and 1960s.



420



421

420

**Constantine VIII (1025-1028), histamenon, Constantinople**, facing bust of Christ wearing nimbus ornamented with two crescents, *rev.*, facing bust of Constantine VIII, holding labarum and akakia; triple border; 4.37g (DO 1; S. 1815), *slightly double struck, about extremely fine* £600-800

Ex European Ambassador Collection, formed in the 1950s and 1960s.

421

**Romanus III, Argyrus (1028-1034), histamenon, Constantinople**, Christ enthroned facing, *rev.*, Romanus facing standing, holding globus cruciger and crowned by Virgin standing at right, wearing nimbus; double border; 4.42g (DO 1b; S. 1819), *extremely fine* £500-700

Ex European Ambassador Collection, formed in the 1950s and 1960s.



422

**Romanus III, Argyrus (1028-1034), histamenon, Constantinople**, Christ enthroned facing, *rev.*, Romanus facing standing, holding globus cruciger and crowned by Virgin standing at right, without nimbus; double border; 4.40g (DO 1a; S. 1820), *some marks, otherwise extremely fine* £700-1,000

Ex European Ambassador Collection, formed in the 1950s and 1960s.



423

**Michael IV the Paphlagonian (1034-1041), histamenon, Constantinople**, facing bust of Christ wearing nimbus, *rev.*, facing bust of Michael IV, Manus Dei above, holding labarum and globus cruciger; triple border; 4.38g (DO 1; S. 1824), *several marks, otherwise about extremely fine* £1,000-1,500

Ex European Ambassador Collection, formed in the 1950s and 1960s.



424

**Constantine IX, Monomachus (1042-1055), histamenon, Constantinople**, Christ enthroned facing, *rev.*, facing bust of Constantine IX holding labarum and globus cruciger; triple border; 4.39g (DO 2; S. 1829), *extremely fine* £500-700

Ex European Ambassador Collection, formed in the 1950s and 1960s.



425

**Constantine IX, Monomachus (1042-1055), histamenon, Constantinople**, facing bust of Christ, *rev.*, facing bust of Constantine IX holding long cross and globus cruciger; triple border; 4.44g (DO 3; S. 1830), *extremely fine* £500-700

Ex European Ambassador Collection, formed in the 1950s and 1960s.



426

**Constantine IX, Monomachus (1042-1055), histamenon, Constantinople**, facing bust of Christ, *rev.*, facing bust of Constantine IX holding long cross and globus cruciger; triple border; 4.39g (DO 3; S. 1830), *a few marks, otherwise extremely fine* £400-600

Ex European Ambassador Collection, formed in the 1950s and 1960s.





427

**Constantine IX, Monomachus (1042-1055), histamenon, Constantinople, 1054**, facing bust of Christ wearing nimbus, *rev.*, facing bust of Constantine IX holding globus cruciger and sword; in field, on either side, large star; triple border; 4.43g (DO 4; S. 1831), *old vertical scratch to right of Christ, extremely fine with very sharp reverse image*

£2,500-3,500

Ex European Ambassador Collection, formed in the 1950s and 1960s. The large stars that appear on reverse field of the coin are probably a reference to a super nova which appeared in the skies during the year 1054. This super nova is confirmed by Japanese and Chinese astronomers.



428

**Constantine IX, Monomachus (1042-1055), tetarteron, Constantinople**, facing bust of Christ wearing nimbus, *rev.*, facing bust of Constantine IX wearing jewels around neck, holding labarum and globus cruciger; 4.01g (DO 6; S. 1833), *extremely fine*

£700-1,000

Ex European Ambassador Collection, formed in the 1950s and 1960s.



429

**Constantine IX, Monomachus (1042-1055), miliaresion, Constantinople**, Virgin orans facing, *rev.*, Constantine standing facing, holding long cross and sword; double border; 2.46g (DO 7; S. 1834), *ex mount and with flan crack, otherwise fine*

£120-150

Ex European Ambassador Collection, formed in the 1950s and 1960s.



430

**Constantine IX, Monomachus (1042-1055), 2/3 miliaresion, Constantinople**, Η ΒΛΑΧΕΡ-ΝΙΤΙΚΑ, facing bust of the Virgin orans, *rev.*, inscription in five lines, ΘΚΕΡ, Θ, / ΚΩΝCΤΑΝ / ΤΙΝΩ ΔΕΕ / ΠΙΟΤΗ ΤΩ / ΜΟΝΟΜΑ; double border; 1.52g (DO 8; S. 1835), *very faint scratch on obverse left field, clipped, extremely fine*

£600-800

Ex European Ambassador Collection, formed in the 1950s and 1960s.

All lots are subject to a Buyer's Premium of 20% on the hammer price plus VAT as appropriate. See our Conditions of Business for further details.



431

**Theodora (1055-1056), histamenon, Constantinople**, Christ standing facing holding book of Gospels, *rev.*, Theodora and the Virgin standing facing, holding between them labarum; double border; 4.39g (DO 1; S. 1837), *extremely fine*  
£2,000-3,000

Ex European Ambassador Collection, formed in the 1950s and 1960s.



432

**Theodora (1055-1056), tetarteron, Constantinople**, facing bust of Christ wearing nimbus, *rev.*, facing bust of Theodora holding jewelled sceptre and globus cruciger; 4.01g (DO 2; S. 1838), *extremely fine*  
£2,000-3,000

Ex European Ambassador Collection, formed in the 1950s and 1960s.



433

**Michael VI, Stratioticus (1056-1057), tetarteron, Constantinople**, facing bust of the Virgin orans, *rev.*, Michael standing facing, holding long cross and akakia; 4.00g (DO 2; S. 1841), *extremely fine* and rare  
£4,000-6,000

Ex European Ambassador Collection, formed in the 1950s and 1960s.



434

**Isaac I, Comnenus (1057-1059), histamenon, Constantinople**, Christ enthroned facing, *rev.*, Isaac standing facing, holding sword and sheath; double boarder; 4.42g (DO 2; S. 1843), *extremely fine*  
£600-800

Ex European Ambassador Collection, formed in the 1950s and 1960s.

435

**Constantine X, Ducas (1059-1067), histamenon, Constantinople**, Christ enthroned facing, *rev.*, Constantine standing facing, holding labarum and globus cruciger; double boarder; 4.42g (DO 1; S. 1847), *extremely fine*  
£350-450

Ex European Ambassador Collection, formed in the 1950s and 1960s.

All lots are subject to a Buyer's Premium of 20% on the hammer price plus VAT as appropriate. See our Conditions of Business for further details.





436

**Constantine X, Ducas (1059-1067), tetarteron, Constantinople**, facing bust of the Virgin orans, *rev.*, facing bust of Constantine holding globus cruciger and akakia; 4.00g (DO 3; S. 1849), *obverse scuff on Virgin's pallium, reverse struck from rusty dies, otherwise extremely fine* £600-800

Ex European Ambassador Collection, formed in the 1950s and 1960s.



437

**Constantine X, Ducas (1059-1067), 2/3 miliaresion, Constantinople**, Virgin orans facing, *rev.*, inscription in five lines, +ΘΚΕ RO / ΗΘΕΙ ΚΩΝ / CTANTINΩ / ΔΕCΠOΤΗ / ΤΩ Δ8ΚΑ; 1.66g (DO 6; S. 1851), *very fine* £300-400

Ex European Ambassador Collection, formed in the 1950s and 1960s.



438

**Eudocia (1067), histamenon, Constantinople**, Christ enthroned facing, *rev.*, standing figures of Eudocia, holding jewelled scepter, between Michael and Constantius, each holding globus cruciger and akakia; double boarder; 4.42g (DO 1; S. 1857), *extremely fine* £1,000-1,500

Ex European Ambassador Collection, formed in the 1950s and 1960s.



439



440

439

**Romanus IV, Diogenes (1068-1071), histamenon, Constantinople**, Christ standing facing, crowning Romanus on his left and Eudocia on his right, *rev.*, figures of Michael, holding labarum and akakia, between Constantius and Andronicus, each holding globus cruciger and akakia, all standing on footstools; double boarder; 4.38g (DO 1; S. 1859), *extremely fine* £500-700

Ex European Ambassador Collection, formed in the 1950s and 1960s.

440

**Romanus IV, Diogenes (1068-1071), histamenon, Constantinople**, Christ standing facing, crowning Romanus on his left and Eudocia on his right, *rev.*, figures of Michael, holding labarum and akakia, between Constantius and Andronicus, each holding globus cruciger and akakia, all standing on dotted exergual band; double boarder; 4.34g (DO 2; S. 1861), *about extremely fine* £400-600

Ex European Ambassador Collection, formed in the 1950s and 1960s.

All lots are subject to a Buyer's Premium of 20% on the hammer price plus VAT as appropriate. See our Conditions of Business for further details.



441

**Romanus IV, Diogenes (1068-1071), tetarteron, Constantinople**, facing bust of Theotokos Nikopoios, *rev.*, facing busts of Romanus and Eudocia holding between them long cross on globus; 4.00g (DO 3; S. 1862), *extremely fine*

£700-1,000

Ex European Ambassador Collection, formed in the 1950s and 1960s.



442

**Michael VII, Ducas (1071-1078), miliaresion, Constantinople**, Virgin orans facing, *rev.*, Michael standing facing, holding long cross and sword; double border; 2.59g (DO 7; S. 1873), *reverse weak, very fine*

£300-500

Ex European Ambassador Collection, formed in the 1950s and 1960s.



443

**Michael VII, Ducas (1071-1078), histamenon, Constantinople**, Christ enthroned facing, *rev.*, facing bust of Michael holding labarum and globus cruciger; double border; 4.37g (DO 1; S. 1869), *extremely fine*

£400-600

Ex European Ambassador Collection, formed in the 1950s and 1960s.



444



445

444

**Michael VII, Ducas (1071-1078), histamenon, Constantinople**, Christ enthroned facing, *rev.*, facing bust of Michael holding labarum and globus cruciger; double border; 4.45g (DO 1; S. 1869), *about extremely fine*

£300-400

Ex European Ambassador Collection, formed in the 1950s and 1960s.

445

**Michael VII, Ducas (1071-1078), histamenon, Constantinople**, Christ enthroned facing, *rev.*, facing bust of Michael holding labarum and globus cruciger; double border; 4.36g (DO 1; S. 1869), *slightly weak obverse, otherwise about extremely fine*

£300-400

Ex European Ambassador Collection, formed in the 1950s and 1960s.





446

**Michael VII, Ducas (1071-1078), electrum tetarteron, Constantinople**, facing bust of Theotokos Nikopoios, *rev.*, facing busts of Michael and Maria holding between them long cross ornamented with X and pellet within crescent; 3.99g (DO 5; S. 1872), *flan cracked and with obverse scratch, very fine* £400-600

Ex European Ambassador Collection, formed in the 1950s and 1960s.



447

**Michael VII, Ducas (1071-1078), miliaresion, Constantinople**, Virgin orans facing, *rev.*, Michael standing facing, holding long cross and sword; double border; 2.59g (DO 7; S. 1873), *reverse weak, very fine* £300-500

Ex European Ambassador Collection, formed in the 1950s and 1960s.



448

**Michael VII, Ducas (1071-1078), 2/3 miliaresion, Constantinople**, facing bust of Theotokos Nikopoios, *rev.*, inscription in five lines, +ΘΚΕ / ΒΟΗΘΕΙ / ΜΙΧΑΗΛ / ΔΕCΠΟΤΗ / ΤΩ Δ8ΚΑ; 1.28g (DO 8; S. 1876), *edge damage, fine to very fine* £150-200

Ex European Ambassador Collection, formed in the 1950s and 1960s.



449



450

449

**Nicephorus III, Botaniates (1078-1081), electrum histamenon, Constantinople**, Christ enthroned facing, *rev.*, Nicephorus standing facing holding labarum, ornamented with X, and globus cruciger; double border; 4.36g (DO 3; S. 1881), *slightly weak obverse, reverse graffiti at 2 o'clock, otherwise about extremely fine* £200-300

Ex European Ambassador Collection, formed in the 1950s and 1960s.

450

**Nicephorus III, Botaniates (1078-1081), electrum histamenon, Constantinople**, Christ enthroned facing, *rev.*, Nicephorus standing facing holding labarum, ornamented with X, and globus cruciger; double border; 4.40g (DO 3; S. 1881), *slightly weak obverse, flan splits at 2 and 6 o'clock, good very fine* £150-200

Ex European Ambassador Collection, formed in the 1950s and 1960s.



451

451

**Nicephorus III, Botaniates (1078-1081), electrum histamenon, Constantinople**, facing bust of Christ wearing nimbus, *rev.*, facing bust of Nicephorus holding long cross and globus cruciger; 4.30g (DO 1; S. 1883), *flan cracks, otherwise fine to very fine* £150-200

Ex European Ambassador Collection, formed in the 1950s and 1960s.



452

452

**Nicephorus III, Botaniates (1078-1081), electrum tetarteron, Constantinople**, facing bust of Christ wearing nimbus, *rev.*, Nicephorus standing facing holding labarum, ornamented with X, and globus cruciger; 3.84g (DO 5c; S. 1884), *flan crack, obverse double struck, otherwise good very fine* £400-600

Ex European Ambassador Collection, formed in the 1950s and 1960s.



453

453

**Alexius I, Comnenus (1081-1118), electrum histamenon, Constantinople**, pre-reform coinage, Christ enthroned facing, *rev.*, facing bust of Alexius holding sceptre surmounted by pelleted star and globus cruciger; double border; 4.32g (DO 2b; S. 1893), *minor flan crack, good very fine* £200-300

Ex European Ambassador Collection, formed in the 1950s and 1960s.



454

454

**Alexius I, Comnenus (1081-1118), electrum histamenon, Constantinople**, pre-reform coinage, Christ enthroned facing, *rev.*, facing bust of Alexius holding sceptre surmounted by pelleted star and globus cruciger; double border; 4.34g (DO 2b; S. 1893), *two flan cracks, very fine* £150-200

Ex European Ambassador Collection, formed in the 1950s and 1960s.



455

**Alexius I, Comnenus (1081-1118), tetarteron, Thessalonica**, pre-reform coinage, facing bust of Virgin Mary, on her breast, nimbate head of the infant Christ facing, *rev.*, facing bust of Alexius holding jewelled sceptre and globus cruciger; 3.64g (DO 8.4; S. 1906), *dark patina, otherwise about extremely fine* £400-500

Ex European Ambassador Collection, formed in the 1950s and 1960s.





456

**Alexius I, Comnenus (1081-1118), electrum aspron trachy, Constantinople**, post-reform coinage, Virgin enthroned facing, holding before her, nimbate head of the infant Christ facing, *rev.*, Alexius standing facing, holding jewelled sceptre and globus cruciger; 4.29g (DO 22.2; S. 1915), *flan cracks, otherwise extremely fine* £300-400

Ex European Ambassador Collection, formed in the 1950s and 1960s.



457

**Alexius I, Comnenus (1081-1118), billon tetarteron, Constantinople**, post-reform coinage, facing bust of Christ wearing nimbus, *rev.*, facing bust of Alexius holding labarum and globus cruciger; 3.95g (DO 33; S. 1920), *about extremely fine* £150-200

Ex European Ambassador Collection, formed in the 1950s and 1960s.



458

**Alexius I, Comnenus (1081-1118), hyperpyron, Thessalonica**, post-reform coinage, Christ enthroned facing wearing nimbus, *rev.*, Alexius standing facing holding labarum and globus cruciger, Manus Dei above; 4.45g (DO 20h.4; S. 1924), *obverse double struck, otherwise extremely fine* £300-400

Ex European Ambassador Collection, formed in the 1950s and 1960s.



459

**Alexius I, Comnenus (1081-1118), hyperpyron, Philippopolis (?)**, post-reform coinage, Christ enthroned facing wearing nimbus, *rev.*, Alexius standing facing holding labarum and globus cruciger, Manus Dei above; 4.33g (DO 20 (o.1) same dies; S. 1935), *reverse graffiti on lower right, otherwise extremely fine and very rare* £1,500-2,000

Ex European Ambassador Collection, formed in the 1950s and 1960s. The attribution to the mint of "Philippopolis?" is assured since the coin is struck from the same dies as the example in Dumbarton Oaks.



460

**John II, Comnenus (1118-1143), hyperpyron, Constantinople**, Christ enthroned facing wearing nimbus, *rev.*, half-length figures of John and Virgin facing holding patriarchal cross between them, Manus Dei above emperor; 4.16g (DO 1a.2; S. 1938), *flan crack and scuff on Christ's portrait, otherwise about extremely fine* £250-350

Ex European Ambassador Collection, formed in the 1950s and 1960s.



461

**John II, Comnenus (1118-1143), electrum aspron trachy, Constantinople**, Christ enthroned facing wearing nimbus, *rev.*, John and St. George standing facing, holding between them patriarchal cross; 4.20g (DO 8e; S. 1941), *good very fine* £200-250

Ex European Ambassador Collection, formed in the 1950s and 1960s.



462

**John II, Comnenus (1118-1143), electrum aspron trachy, Constantinople**, Christ enthroned facing wearing nimbus, *rev.*, John and St. George standing facing, holding between them patriarchal cross standing on three steps; 4.45g (DO 8d; S. 1942), *about extremely fine* £300-400

Ex European Ambassador Collection, formed in the 1950s and 1960s.



463

**John II, Comnenus (1118-1143), hyperpyron, Thessalonica**, Christ enthroned facing wearing nimbus, *rev.*, John standing facing, holding globus cruciger, being crowned by Virgin standing at right, wearing nimbus; 4.44g (DO 3a; S. 1949), *good very fine* £200-300

Ex European Ambassador Collection, formed in the 1950s and 1960s.



464

**Manuel I, Comnenus (1143-1180), electrum aspron trachy, Constantinople**, facing bust of Christ, *rev.*, Manuel standing facing, holding labarum and akakia, being crowned by Virgin standing at right, wearing nimbus; 3.28g (DO 2a.2; S. 1957), *minor flan cracks, obverse scratch at 5 o'clock, otherwise extremely fine* £300-400

Ex European Ambassador Collection, formed in the 1950s and 1960s.



465

**Manuel I, Comnenus (1143-1180), electrum aspron trachy, Constantinople**, Christ enthroned facing, *rev.*, Manuel and Virgin standing facing, holding patriarchal cross between them; 4.57g (DO 3; S. 1958), *about extremely fine* £300-400

Ex European Ambassador Collection, formed in the 1950s and 1960s.

All lots are subject to a Buyer's Premium of 20% on the hammer price plus VAT as appropriate. See our Conditions of Business for further details.





466



467

466

**Manuel I, Comnenus (1143-1180), electrum aspron trachy, Constantinople**, Christ standing facing, with star on either side, *rev.*, Manuel and St. Theodore standing facing, holding patriarchal cross on globus base between them; 4.31g (DO 4d; S. 1959), *small flan crack at 8 o'clock, toned, good very fine*

£300-400

Ex European Ambassador Collection, formed in the 1950s and 1960s.

467

**Manuel I, Comnenus (1143-1180), electrum aspron trachy, Constantinople**, facing bust of Christ, *rev.*, Manuel standing facing, holding labarum and akakia, Manus Dei on right; 4.25g (DO 6; S. 1960), *of a rusted die, small central crack, otherwise good very fine*

£200-300

Ex European Ambassador Collection, formed in the 1950s and 1960s.



468



469

468

**Manuel I, Comnenus (1143-1180), electrum aspron trachy, Constantinople**, Christ enthroned facing, *rev.*, Manuel standing facing, holding labarum and globus cruciger, being crowned by Virgin standing at right; 4.41g (DO 2a.2; S. 1961), *extremely fine*

£200-300

Ex European Ambassador Collection, formed in the 1950s and 1960s.

469

**Manuel I, Comnenus (1143-1180), electrum aspron trachy, Thessalonica**, Virgin enthroned facing, holding before her, nimbate head of the infant Christ facing, *rev.*, Manuel and St. Demetrius standing facing, holding labarum between them; 1.89g (DO 9.5; S. 1974), *four minor flan cracks, very fine*

£150-250

Ex European Ambassador Collection, formed in the 1950s and 1960s.



470

**Andronicus I, Comnenus (1183-1185), hyperpyron, Constantinople**, Virgin enthroned facing, holding before her, head of the infant Christ facing, *rev.*, Andronicus standing facing, holding labarum and globus cruciger, being crowned by Christ standing at right, wearing nimbus; 4.53g (DO 1.4; S. 1983), *virtually as struck*

£1,000-1,500

Ex European Ambassador Collection, formed in the 1950s and 1960s.

All lots are subject to a Buyer's Premium of 20% on the hammer price plus VAT as appropriate. See our Conditions of Business for further details.



471

**Isaac II, Angelus (1185-1195), hyperpyron, Constantinople**, Virgin enthroned facing, holding before her, nimbate head of the infant Christ facing, *rev.*, Isaac standing facing holding cruciform sceptre and Archangel Michael standing facing, holding sword between them, Manus Dei above; 4.51g (DO 1b; S. 2001), *extremely fine* £400-500

Ex European Ambassador Collection, formed in the 1950s and 1960s.



472

**Alexius III, Angelus-Comnenus (1195-1203), electrum aspron trachy, Constantinople**, Christ enthroned facing, *rev.*, Alexius and St. Constantine standing facing, each holding cruciform sceptre and labarum between them; 4.68g (DO 2; S. 2010), *extremely fine* £300-400

Ex European Ambassador Collection, formed in the 1950s and 1960s.

## THE EMPIRE OF NICAEA



473

**Theodore I, Comnenus-Lascaris (1208-1222), silver trachy, Magnesia**, Christ enthroned facing, *rev.*, Theodore and St. Theodore standing facing, each holding sword and star-topped staff between them; 3.67g (DO 2.1; S. 2064), *flan crack, otherwise extremely fine* £300-400

Ex European Ambassador Collection, formed in the 1950s and 1960s.



474

**Theodore I, Comnenus-Lascaris (1208-1222), trachy, Magnesia**, Christ enthroned facing, *rev.*, Theodore and St. Theodore standing facing, each holding sword and star-topped staff between them; 3.61g (DO 2.3; S. 2064), *minor flan crack, otherwise extremely fine* £300-400

Ex European Ambassador Collection, formed in the 1950s and 1960s.





475

**Theodore I, Comnenus-Lascaris (1208-1222), trachy, Magnesia**, Christ enthroned facing, *rev.*, Theodore and St. Theodore standing facing, each holding sword and star-topped staff between them; 4.06g (DO 2.3; S. 2064), toned, *X graffiti on both sides, otherwise extremely fine* £300-400

Ex European Ambassador Collection, formed in the 1950s and 1960s.



476

**John III, Ducas-Vatatzes (1222-1254), hyperpyron, Magnesia**, Christ enthroned facing wearing nimbus, *rev.*, John standing facing, wearing jewelled neck cross, holding labarum and akakia, being crowned by Virgin standing at right, wearing nimbus; 4.23g (cf. DO 5 var.; S. 2073 var.) *about extremely fine* £300-500

Ex European Ambassador Collection, formed in the 1950s and 1960s. This coin of unusually fine style appears to be unlisted with the distinctive pelleted cross on the collar of the emperor.



477

**John III, Ducas-Vatatzes (1222-1254), hyperpyron, Magnesia**, Christ enthroned facing wearing nimbus, in right field star, *rev.*, John standing facing, holding labarum and akakia, being crowned by Virgin standing at right, wearing nimbus; 4.21g (DO 8; S. 2073), *good very fine* £250-300

Ex European Ambassador Collection, formed in the 1950s and 1960s.

## THE RESTORED BYZANTINE EMPIRE



478

**Michael VIII, Palaeologus (1261-1282), hyperpyron, Constantinople**, bust of the Virgin Mary within city walls with six groups of towers, *rev.*, Michael kneeling, being presented by Archangel Michael to Christ seated facing, holding scroll; 4.22g (DO var 5; S. 2242), *minor reverse graffiti, otherwise extremely fine* £400-600

Ex European Ambassador Collection, formed in the 1950s and 1960s.

All lots are subject to a Buyer's Premium of 20% on the hammer price plus VAT as appropriate. See our Conditions of Business for further details.



479



480

479

**Michael VIII, Palaeologus (1261-1282), hyperpyron, Constantinople**, bust of the Virgin orans within city walls with six groups of towers, *rev.*, Michael kneeling, being presented by Archangel Michael to Christ seated facing, holding scroll; sigla A/A; 4.06g (DO var. 7-9; S. 2242), *flan crack, partly weak, good very fine* £150-200

Ex European Ambassador Collection, formed in the 1950s and 1960s.

480

**Michael VIII, Palaeologus (1261-1282), hyperpyron, Constantinople**, bust of the Virgin orans within city walls with six groups of towers, *rev.*, Michael kneeling, being presented by Archangel Michael to Christ seated facing, holding scroll, Θ between them; sigla Π/Φ; 4.24g (S. 2242; PCPC p. 17, 47 var.), *extremely fine* £400-600

Ex European Ambassador Collection, formed in the 1950s and 1960s.



481



482

481

**Michael VIII, Palaeologus (1261-1282), hyperpyron, Constantinople**, bust of the Virgin orans within city walls with six groups of towers, *rev.*, Michael kneeling, being presented by Archangel Michael to Christ seated facing, holding scroll; 4.15g (S. 2242; PCPC p. 17, 26 var.), *minor graffiti, good very fine* £200-300

Ex European Ambassador Collection, formed in the 1950s and 1960s.

482

**Michael VIII, Palaeologus (1261-1282), hyperpyron, Constantinople**, bust of the Virgin orans within city walls with six groups of towers, *rev.*, Michael kneeling, being presented by Archangel Michael to Christ seated facing, holding scroll, ÷ between them; sigla +/+; 4.13g (S. 2242; PCPC p. 17, 17), *minor obverse graffiti, otherwise about extremely fine* £200-300

Ex European Ambassador Collection, formed in the 1950s and 1960s.



483



484

483

**Michael VIII, Palaeologus (1261-1282), hyperpyron, Constantinople**, bust of the Virgin orans within city walls with six groups of towers, *rev.*, Michael kneeling, being presented by Archangel Michael to Christ seated facing, holding scroll; 4.23g (S. 2242), *partly weak, very fine* £150-200

Ex European Ambassador Collection, formed in the 1950s and 1960s.

484

**Michael VIII, Palaeologus (1261-1282), hyperpyron, Constantinople**, bust of the Virgin orans within city walls with six groups of towers, *rev.*, Michael kneeling, being presented by Archangel Michael to Christ seated facing, holding Gospels; sigla C/A; 4.18g (S. 2243; PCPC p. 18, 63), *good very fine* £200-300

Ex European Ambassador Collection, formed in the 1950s and 1960s.





485



486

485

**Michael VIII, Palaeologus (1261-1282), hyperpyron, Philadelphia (?)**, bust of the Virgin orans within city walls with six groups of towers, *rev.*, Michael kneeling, being presented by Archangel Michael to Christ seated facing, holding Gospels; ⚔/⚔/Π between them; sigla E/Π; 4.18g (S. 2243; PCPC p. 18, 84), *noticeably clipped, extremely fine*

£200-300

Ex European Ambassador Collection, formed in the 1950s and 1960s.

486

**Michael VIII, Palaeologus (1261-1282), hyperpyron, Philadelphia (?)**, bust of the Virgin orans within city walls with six groups of towers, *rev.*, Michael kneeling, being presented by Archangel Michael to Christ seated facing, holding Gospels; Π/Π/E between them; sigla Π/E; 4.22g (S. 2243; PCPC p. 18, 80), *good very fine*

£200-300

Ex European Ambassador Collection, formed in the 1950s and 1960s.



487



488

487

**Andronicus II, Palaeologus (1282-1328), hyperpyron, Constantinople**, bust of the Virgin orans within city walls with six groups of towers, *rev.*, +/ ANΔPO / NIKOC E / N XΩT / ΘΟΙΤΡΟΙ / ΟΔΗΛΕ / EVKOO / PC, Michael kneeling before Christ; sigla *obv.*, ⑈/\* *rev.*, lis; 4.07g (S. 2326), *about extremely fine*

£200-300

Ex European Ambassador Collection, formed in the 1950s and 1960s. For a coin from the same reverse die see Auction World Co., Ltd., 16 January 2021 lot 1630. On the present coin the fluer-de-lis sigla has been added to the die.

488

**Andronicus II and Michael IX (1295-1320), hyperpyron, Constantinople**, bust of the Virgin within city walls with six groups of towers; sigla ⑈/B, *rev.*, Christ blessing Andronicus and Michael; 4.05g (DO 244 var.; S. 2396; PCPC p. 33, 14 var.), *very fine*

£150-200

Ex European Ambassador Collection, formed in the 1950s and 1960s.



489



490

489

**Andronicus II and Michael IX (1295-1320), hyperpyron, Constantinople**, bust of the Virgin within city walls with six groups of towers; sigla B/B, *rev.*, Christ blessing Andronicus and Michael; 3.91g (S. 2396; PCPC p. 33, 14), *some reverse graffiti, good very fine*

£200-250

Ex European Ambassador Collection, formed in the 1950s and 1960s.

490

**Andronicus II and Michael IX (1295-1320), hyperpyron, Constantinople**, bust of the Virgin within city walls with four groups of towers; sigla C/K and Π/N, *rev.*, Christ blessing Andronicus and Michael; 3.71g (DO 37ff; S. 2396; PCPC p. 35, 191), *minor flan cracks, very fine*

£150-200

Ex European Ambassador Collection, formed in the 1950s and 1960s.

All lots are subject to a Buyer's Premium of 20% on the hammer price plus VAT as appropriate. See our Conditions of Business for further details.



491

491

**Andronicus II and Michael IX (1295-1320), hyperpyron, Constantinople**, bust of the Virgin within city walls with four groups of towers; sigla \*/K and \*/N, *rev.*, Christ blessing Andronicus and Michael; 4.22g (DO 353 var.; S. 2396; PCPC p. 35, 185), *very fine* £150-200

Ex European Ambassador Collection, formed in the 1950s and 1960s.



492

492

**Andronicus II and Michael IX (1295-1320), hyperpyron, Constantinople**, bust of the Virgin within city walls with four groups of towers; sigla B / B, *rev.*, Christ blessing Andronicus and Michael; 4.25g (S. 2396; PCPC p. 34, 142), *about extremely fine* £200-300

Ex European Ambassador Collection, formed in the 1950s and 1960s.



493

493

**Andronicus II and Michael IX (1295-1320), hyperpyron, Constantinople**, bust of the Virgin within city walls with four groups of towers; sigla \*/K and (?), *rev.*, Christ blessing Andronicus and Michael; 4.22g (S. 2396; PCPC p. 35, 184-189 var.), *minor flan cracks, very fine* £150-200

Ex European Ambassador Collection, formed in the 1950s and 1960s.



494

494

**Andronicus II and Michael IX (1295-1320), hyperpyron, Constantinople**, bust of the Virgin within city walls with six groups of towers; sigla A/A, *rev.*, Christ blessing Andronicus and Michael; 3.91g (S. 2396; PCPC p. 33, 2), *flattened and cracked flan, very fine* £150-200

Ex European Ambassador Collection, formed in the 1950s and 1960s.



495

495

**Andronicus II and Michael IX (1295-1320), hyperpyron, Constantinople**, bust of the Virgin within city walls with six groups of towers; sigla A/A, *rev.*, Christ blessing Andronicus and Michael; 4.15g (S. 2396; PCPC p. 33, 2), *very fine* £150-200

Ex European Ambassador Collection, formed in the 1950s and 1960s.



496

496

**Andronicus II and Michael IX (1295-1320), hyperpyron, Constantinople**, bust of the Virgin within city walls with four groups of towers; sigla C/K and II/N, *rev.*, Christ blessing Andronicus and Michael; 4.15g (DO 371; S. 2396; PCPC p. 35, 191), *very fine* £150-200

Ex European Ambassador Collection, formed in the 1950s and 1960s.





497

**Andronicus II and Michael IX (1295-1320), hyperpyron, Constantinople**, bust of the Virgin within city walls with four groups of towers; sigla C/K• and II/N, *rev.*, Christ blessing Andronicus and Michael; 4.06g (DO 373; S. 2396; PCPC p. 35, 190), *very fine* £150-200

Ex European Ambassador Collection, formed in the 1950s and 1960s.



498



499



500

498

**Andronicus II and Michael IX (1295-1320), basilikon, Constantinople**, Christ enthroned facing, in field, on either side, large star, *rev.*, Andronicus and Michael standing facing, holding labarum between them; 1.70g (DO 536-538; S. 2402), *good very fine* £100-150

Ex European Ambassador Collection, formed in the 1950s and 1960s.

499

**Andronicus II and Michael IX (1295-1320), basilikon, Constantinople**, Christ enthroned facing, *rev.*, Andronicus and Michael standing facing, holding labarum between them; 2.00g (DO 517; S. 2402), *good very fine* £100-150

Ex European Ambassador Collection, formed in the 1950s and 1960s.

500

**Anonymous Palaeologan Coinage (c.1280-1350), basilikon, Constantinople**, Christ enthroned facing, *rev.*, Virgin enthroned holding nimbate infant Christ facing; 8/ B at either side of throne; 2.08g (DO 544-548; S. 2587), *toned, about extremely fine and rare* £200-300

Ex European Ambassador Collection, formed in the 1950s and 1960s.



501



502

501

**Andronicus II and Andronicus III (1325-1328), hyperpyron, Constantinople**, bust of the Virgin within city walls with four groups of towers; sigla B/K/•\* and K/•/\*, *rev.*, Christ blessing Andronicus II and Andronicus III; 4.73g (DO 498-499 var.; S. 2461; PCPC p. 41, 8/9var), *minor flan cracks, X graffiti on reverse, very fine* £150-200

Ex European Ambassador Collection, formed in the 1950s and 1960s.

502

**Andronicus II and Andronicus III (1325-1328), hyperpyron, Constantinople**, bust of the Virgin within city walls with four groups of towers; sigla B/K/(Φ?), *rev.*, Christ blessing Andronicus II and Andronicus III; 5.08g (DO 500; S. 2461; PCPC p. 41, 10), *minor flan cracks, very fine* £150-200

Ex European Ambassador Collection, formed in the 1950s and 1960s.



503

503

**Andronicus II and Andronicus III (1325-1328), hyperpyron, Constantinople**, bust of the Virgin within city walls with four groups of towers; sigla B/K, *rev.*, Christ blessing Andronicus II and Andronicus III; 4.32g (S. 2461; PCPC p41, 7var), *flan cracks, very fine* £150-200

Ex European Ambassador Collection, formed in the 1950s and 1960s.



504

504

**Andronicus II and Andronicus III (1325-1328), hyperpyron, Constantinople**, bust of the Virgin within city walls with four groups of towers; sigla •/lis and A, *rev.*, Christ blessing Andronicus II and Andronicus III; 4.38g (DO 494-497; S. 2461; PCPC p. 41, 4), *minor flan cracks, very fine* £150-200

Ex European Ambassador Collection, formed in the 1950s and 1960s.



505

**Manuel II, Palaeologus (1391-1423), half stavraton, Constantinople**, facing bust of Christ, *rev.*, facing bust of Manuel, in left field K, in right pellet; 3.46g (DO g var., 1491-1497; S. 2551/2; PCPC p. 64, 80), *very fine* £100-120

Ex European Ambassador Collection, formed in the 1950s and 1960s.



506

**Manuel II, Palaeologus (1391-1423), half stavraton, Constantinople**, facing bust of Christ; sigla C/Φ, *rev.*, facing bust of Manuel; sigla Φ/C; 3.70g (DO w var., 1453-1458; S. 2551/2; PCPC p. 64, 51), *about extremely fine* £150-200

Ex European Ambassador Collection, formed in the 1950s and 1960s.



507

**Manuel II, Palaeologus (1391-1423), half stavraton, Constantinople**, facing bust of Christ; sigla ••/ΠΚ(?), *rev.*, facing bust of Manuel; sigla •/• (?); 3.64g (S. 2551/2; PCPC p.64, 60 var.), *very fine* £100-150

Ex European Ambassador Collection, formed in the 1950s and 1960s.





508

508

**Manuel II, Palaeologus (1391-1423), one-eighth stavraton, Constantinople**, facing bust of Christ, *rev.*, facing bust of Manuel; sigla •/•; 1.01g (DO class II, b var, 1533-1535; S. 2553; PCPC p. 64, 61 var.), *slight edge damage, good very fine* £100-150

Ex European Ambassador Collection, formed in the 1950s and 1960s.



509

509

**Manuel II, Palaeologus (1391-1423), one-eighth stavraton, Constantinople**, facing bust of Christ, sigla C/Π(?), *rev.*, facing bust of Manuel, sigla •/•; 0.64g (DO e var, 1543-1580; S. 2553; PCPC p. 64, 63), *very fine* £70-100

Ex European Ambassador Collection, formed in the 1950s and 1960s.



510

510

**John VIII, Palaeologus (1423-1448), stavraton, Constantinople**, facing bust of Christ, sigla ΠΚ/lis, *rev.*, facing bust of John, sigla •/•; 7.10g (DO 1611-1622; S. 2563; PCPC p. 69, 2), *good very fine* £300-400

Ex European Ambassador Collection, formed in the 1950s and 1960s.



511

511

**John VIII, Palaeologus (1423-1448), stavraton, Constantinople**, facing bust of Christ, *rev.*, facing bust of John, sigla •/•; 7.00g (DO 1665-1750; S. 2563; PCPC p. 69, 18), *edge crack, very fine* £200-300

Ex European Ambassador Collection, formed in the 1950s and 1960s.



512

512

**John VIII, Palaeologus (1423-1448), stavraton, Constantinople**, facing bust of Christ, *rev.*, facing bust of John, sigla •/•; 7.11g (DO 1665-1750; S. 2563; PCPC p. 69, 18), *very fine* £200-300

Ex European Ambassador Collection, formed in the 1950s and 1960s.



513

513

**John VIII, Palaeologus (1423-1448), stavraton, Constantinople**, facing bust of Christ; sigla (?)/lis, *rev.*, facing bust of John, sigla •/•; 7.03g (S. 2563; PCPC p. 69, 7?), *very fine* £200-300

Ex European Ambassador Collection, formed in the 1950s and 1960s.

## THE EMPIRE OF TREBIZOND



514



515

514

**Manuel I, Comnenus (1238-1263), asper, Trebizond**, St. Eugenius standing facing, holding long cross, *rev.*, Manuel standing facing, holding labarum and akakia; Manus Dei above; 2.96g (S. 2601), *extremely fine* £100-120

Ex European Ambassador Collection, formed in the 1950s and 1960s.

515

**Alexius III (1349-1390), asper, Trebizond**, St. Eugenius seated on horse marching right, holding cruciform sceptre, B below, *rev.*, Alexius seated on horse marching right, holding cruciform sceptre, B below; 1.72g (S. 2628), *about extremely fine* £200-300

Ex European Ambassador Collection, formed in the 1950s and 1960s.

516

**Byzantine**, Justinian I, decanumnum, Antioch (S. 237); Justin II, folles (4), Nicomedia, years 4, 10, 13 (S. 369), Cyzicus, year (S. 372) and pentanumnum (S. 363); Tiberius II Constantine, follis, Nicomedia, year 4 (S. 440), half folles (2), Constantinople (S. 434) and Nicomedia (S. 443); Maurice Tiberius, folles (3), Cyzicus, year 8 (S. 518), and Antioch, years 14 and 20 (S. 533), half follis, Antioch, year 6 (S. 534), decanumnum (3), Antioch, years 8 (2) and 10 (S. 536 (2) and 537) and pentanumnum, Antioch (S. 539); Phocas, follis and half follis, Cyzicus (S. 665, 668); Heraclius, folles (2), Nicomedia (S. 833 and 836); Constans II, follis (S. 1001), mainly about very fine, some better (22) £200-300

517

**Crusaders**, Antioch, Tancred, follis (Schl. II, 7; Malloy 4), overstruck, very fine; Cilician Armenia, Levon I, Ae tank, fine; Zangids of Syria, Nur al-din Mahmud, fals, Halab (SS 73), partly weak, very fine; with imitative follis of Constans II type, 1.91g, fine (4) £70-100

518

**Lead tesserae (3)**, comprising uniface issue with head of Athena right, another with bust of an Antonine emperor, and a third with triple-faced deity in wreath, *rev.*, Semitic (?) script; a ceramic weight (?) with confronting busts, *rev.*, Greek letters; and Byzantine lead weights (3) with monograms, 13-19mm, fine to very fine (7) £70-100

## END OF SALE



# Conditions of Business for Buyers

## 1. Introduction

(a) The contractual relationship of Morton & Eden Ltd. and Sellers with prospective Buyers is governed by:-

- (i) these Conditions of Business for Buyers;
- (ii) the Conditions of Business for Sellers displayed in the saleroom and available from Morton & Eden Ltd.;
- (iii) Morton & Eden Ltd.'s Authenticity Guarantee;
- (iv) any additional notices and terms printed in the sale catalogue, in each case as amended by any saleroom notice or auctioneer's announcement.

(b) As auctioneer, Morton & Eden Ltd. acts as agent for the Seller. Occasionally, Morton & Eden Ltd. may own or have a financial interest in a lot.

## 2. Definitions

"**Bidder**" is any person making, attempting or considering making a bid, including Buyers;

"**Buyer**" is the person who makes the highest bid or offer accepted by the auctioneer, including a Buyer's principal when bidding as agent;

"**Seller**" is the person offering a lot for sale, including their agent, or executors;

"**M&E**" means Morton & Eden Ltd., auctioneers, Nash House, St George Street, London W1S 2FQ, company number 4198353.

"**Buyer's Expenses**" are any costs or expenses due to Morton & Eden Ltd. from the Buyer;

"**Buyer's Premium**" is the commission payable by the Buyer on the Hammer Price at the rates set out in the Important Information for Buyers;

"**Hammer Price**" is the highest bid for the Property accepted by the auctioneer at the auction or the post auction sale price;

"**Purchase Price**" is the Hammer Price plus applicable Buyer's Premium and Buyer's Expenses;

"**Reserve Price**" (where applicable) is the minimum Hammer Price at which the Seller has agreed to sell a lot.

**The Buyer's Premium, Buyer's Expenses and Hammer Price are subject to VAT, where applicable.**

## 3. Examination of Lots

(a) M&E's knowledge of lots is partly dependent on information provided by the Seller and M&E is unable to exercise exhaustive due diligence on each lot. Each lot is available for examination before sale. Bidders are responsible for carrying out examinations and research before sale to satisfy themselves over the condition of lots and accuracy of descriptions.

(b) All oral and/or written information provided to Bidders relating to lots, including descriptions in the catalogue, condition reports or elsewhere are statements of M&E's opinion and not representations of fact. Estimates may not be relied on as a prediction of the selling price or value of the lot and may be revised from time to time at M&E's absolute discretion.

## 4. Exclusions and limitations of liability to Buyers

(a) M&E shall refund the Purchase Price to the Buyer in circumstances where it deems that the lot is a Counterfeit, subject to the terms of M&E's Authenticity Guarantee.

(b) Subject to Condition 4(a), neither M&E nor the Seller:-

- (i) is liable for any errors or omissions in any oral or written information provided to Bidders by M&E, whether negligent or otherwise;
- (ii) gives any guarantee or warranty to Bidders and any implied warranties and conditions are excluded (save in so far as such obligations cannot be excluded by English law), other than the express warranties given by the Seller to the Buyer (for which the Seller is solely responsible) under the Conditions of Business for Sellers;
- (iii) accepts responsibility to Bidders for acts or omissions (whether negligent or otherwise) by M&E in connection with the conduct of auctions or for any matter relating to the sale of any lot.

(c) Without prejudice to Condition 4(b), any claim against M&E and/ or the Seller by a Bidder is limited to the Purchase Price for the relevant lot. Neither M&E nor the Seller shall be liable for any indirect or consequential losses.

(d) Nothing in Condition 4 shall exclude or limit the liability of M&E or the Seller for death or personal injury caused by the negligent acts or omissions of M&E or the Seller.

## 5. Bidding at Auction

(a) M&E has absolute discretion to refuse admission to the auction. Before sale, Bidders must complete a Registration Form and supply such information and references as M&E requires. Bidders are personally liable for their bid and are jointly and severally liable with their principal, if bidding as agent (in which case M&E's prior and express consent must be obtained).

(b) M&E advises Bidders to attend the auction, but M&E will endeavour to execute absentee written bids provided that they are, in M&E's opinion, received in sufficient time and in legible form.

(c) When available, written and telephone bidding is offered as a free service at the Bidder's risk and subject to M&E's other commitments; M&E is therefore not liable for failure to execute such bids. Telephone bidding may be recorded.

## 6. Import, Export and Copyright Restrictions

M&E and the Seller make no representations or warranties as to whether any lot is subject to import, export or copyright restrictions. It is the Buyer's sole responsibility to obtain any copyright clearance or any necessary import, export or other licence required by law, including licenses required under the Convention on the International Trade in Endangered Species (CITES).

## 7. Conduct of the Auction

(a) The auctioneer has discretion to refuse bids, withdraw or re-offer lots for sale (including after the fall of the hammer) if (s)he believes that there may be an error or dispute, and may also take such other action as (s)he reasonably deems necessary.

(b) The auctioneer will commence and advance the bidding in such increments as (s)he considers appropriate and is entitled to place bids on the Seller's behalf up to the Reserve Price for the lot, where applicable.

(c) Subject to Condition 7(a), the contract between the Buyer and the Seller is concluded on the striking of the auctioneer's hammer.

(d) Any post-auction sale of lots shall incorporate these Conditions of Business.

## 8. Payment and Collection

(a) Unless otherwise agreed in advance, payment of the Purchase Price is due in pounds sterling immediately after the auction (the "Payment Date").

(b) Title in a lot will not pass to the Buyer until M&E has received the Purchase Price in cleared funds. M&E will generally not release a lot to a Buyer before payment. Earlier release shall not affect passing of title or the Buyer's obligation to pay the Purchase Price, as above.

(c) The refusal of any licence or permit required by law, as outlined in Condition 6, shall not affect the Buyer's obligation to pay for the lot, as per Condition 8(a).

(d) The Buyer must arrange collection of lots within 10 working days of the auction. Purchased lots are at the Buyer's risk from the earlier of (i) collection or (ii) 10 working days after the auction. Until risk passes, M&E will compensate the Buyer for any loss or damage to the lot up to a maximum of the Purchase Price actually paid by the Buyer. M&E's assumption of risk is subject to the exclusions detailed in Condition 5(d) of the Conditions of Business for Sellers.

(e) All packing and handling of lots is at the Buyer's risk. M&E will not be liable for any acts or omissions of third party packers or shippers.

## 9. Remedies for non-payment

Without prejudice to any rights that the Seller may have, if the Buyer without prior agreement fails to make payment for the lot within 5 working days of the auction, M&E may in its sole discretion exercise 1 or more of the following remedies:-

(a) store the lot at its premises or elsewhere at the Buyer's sole risk and expense;

(b) cancel the sale of the lot;

(c) set off any amounts owed to the Buyer by M&E against any amounts owed to M&E by the Buyer for the lot;

(d) reject future bids from the Buyer;

(e) charge interest at 8% per annum above Lloyds TSB Bank plc Base Rate from the Payment Date to the date that the Purchase Price is received in cleared funds;

(f) re-sell the lot by auction or privately, with estimates and reserves at M&E's discretion, in which case the Buyer will be liable for any shortfall between the original Purchase Price and the amount achieved on re-sale, including all costs incurred in such re-sale;

(g) Exercise a lien over any Buyer's Property in M&E's possession, applying the sale proceeds to any amounts owed by the Buyer to M&E. M&E shall give the Buyer 14 days written notice before exercising such lien;

(h) commence legal proceedings to recover the Purchase Price for the lot, plus interest and legal costs;

(i) disclose the Buyer's details to the Seller to enable the Seller to commence legal proceedings.

#### 10. Failure to collect purchases

(a) If the Buyer pays the Purchase Price but does not collect the lot within 20 working days of the auction, the lot will be stored at the Buyer's expense and risk at M&E's premises or in independent storage.

(b) If a lot is paid for but uncollected within 6 months of the auction, following 60 days written notice to the Buyer, M&E will re-sell the lot by auction or privately, with estimates and reserves at M&E's discretion. The sale proceeds, less all M&E's costs, will be forfeited unless collected by the Buyer within 2 years of the original auction.

#### 11. Data Protection

(a) M&E will use information supplied by Bidders or otherwise obtained lawfully by M&E for the provision of auction related services, client administration, marketing and as otherwise required by law.

(b) By agreeing to these Conditions of Business, the Bidder agrees to the processing of their personal information and to the disclosure of such information to third

parties world-wide for the purposes outlined in Condition 11(a) and to Sellers as per Condition 9(i).

#### 12. Miscellaneous

(a) All images of lots, catalogue descriptions and all other materials produced by M&E are the copyright of M&E.

(b) These Conditions of Business are not assignable by any Buyer without M&E's prior written consent, but are binding on Bidders' successors, assigns and representatives.

(c) The materials listed in Condition 1(a) set out the entire agreement between the parties.

(d) If any part of these Conditions of Business be held unenforceable, the remaining parts shall remain in full force and effect.

(e) These Conditions of Business shall be interpreted in accordance with English Law, under the exclusive jurisdiction of the English Courts, in favour of M&E.

### Morton & Eden Ltd.'s Authenticity Guarantee

*If Morton & Eden Ltd. sells an item of Property which is later shown to be a "Counterfeit", subject to the terms below Morton & Eden Ltd. will rescind the sale and refund the Buyer the total amount paid by the Buyer to Morton & Eden Ltd. for that Property, up to a maximum of the Purchase Price.*

*The Guarantee lasts for two (2) years after the date of the relevant auction, is for the benefit of the Buyer only and is non-transferable.*

"Counterfeit" means an item of Property that in Morton & Eden Ltd.'s reasonable opinion is an imitation created with the intent to deceive over the authorship, origin, date, age, period, culture or source, where the correct description of such matters is not included in the catalogue description for the Property. Property shall not be considered Counterfeit solely because of any damage and/or restoration and/or modification work (including, but not limited to, traces of mounting, tooling or repatinating). Please note that this Guarantee does not apply if either:-

(i) the catalogue description was in accordance with the generally accepted opinions of scholars and experts at the date of the sale, or the catalogue description indicated that there was a conflict of such opinions; or

(ii) the only method of establishing at the date of the sale that the item was a Counterfeit would have been by means of processes not then generally available or accepted, unreasonably expensive or impractical; or likely to have caused damage to or loss in value to the Property (in Morton & Eden Ltd.'s reasonable opinion); or

(iii) there has been no material loss in value of the Property from its value had it accorded with its catalogue description;

(iv) the sole grounds for claiming that the item is a Counterfeit are based on a difference of opinion between Morton & Eden Ltd and a third-party coin grading service.

To claim under this Guarantee, the Buyer must:-

(i) notify Morton & Eden Ltd. in writing within one (1) month of receiving any information that causes the Buyer to question the authenticity or attribution of the Property, specifying the lot number, date of the auction at which it was purchased and the reasons why it is believed to be Counterfeit; and

(ii) return the Property to Morton & Eden Ltd. in the same condition as at the date of sale and be able to transfer good title in the Property, free from any third party claims arising after the date of the sale.

Morton & Eden Ltd. has discretion to waive any of the above requirements. Morton & Eden Ltd. may require the Buyer to obtain at the Buyer's cost the reports of two independent and recognised experts in the relevant field and acceptable to Morton & Eden Ltd. Morton & Eden Ltd. shall not be bound by any reports produced by the Buyer, and reserves the right to seek additional expert advice at its own expense. In the event Morton & Eden Ltd. decides to rescind the sale under this Guarantee, it may refund to the Buyer the reasonable costs of up to two mutually approved independent expert reports, provided always that the costs of such reports have been approved in advance and in writing by Morton & Eden Ltd.









