



1 Afghanistan. Lot with 5 coins. Comprising 2½ Rupees, AH1299/1882, 22.70g (KM878); Afghani, AH1305/1887, 10.00g (KM910); 25 Pul, AH1316/1937, 3.00g (KM940) and 1349/1930, 5.50g (KM924); 2 Pul, AH1316/1898, 2.00g (KM936). Fine to Uncirculated. **1**



2 Holy Roman Empire. Archduke Ferdinand II, 1564-1595. Taler, ND, Ensisheim, 27.31g (Dav. 8091A). Very good details, some rust and light scratches on the obverse. Attractive patina on the reverse, very fine. **1**



3 Holy Roman Empire. Austrian Netherlands, Brabant, Albert & Isabella 1612-1621. Patagon, ND, Antwerpen mint 27.91g (KM35). Attractive details, minor flan flaws and strike weaknesses with some remaining lustre on the periphery, about very fine. **1**



4 Holy Roman Empire. Ferdinand II, 1619-1637. 3 Kreuzer, 1624, Saint Veit mint, 1.85g (KM499). Old cabinet grey-silver patina and attractive details. Very fine. **1**



5 Holy Roman Empire. Ferdinand Karl, 1646-1662. 3 Kreuzer, 1650, Hall mint, 1.45g (KM852). Attractive details, lightly polished fields and ex pin mount on the reverse side, about very fine. **1**



6 Holy Roman Empire. Charles VI, 1711-1740. Taler, 1730, Hall mint, 28.29g (KM1639; Dav. 1055). Excellent details and much lustre on both sides, some scratches on the obverse not affecting the portrait. Good very fine. **1**



7 Holy Roman Empire. Salzburg, Leopold Anton von Firmian, 1727-1744. 4 Kreuzer, 1731, 2.00g (KM336). Grey-silver patina on the obverse, lightly cleaned on the reverse and with generally good details remaining. Very fine. **1**



8 Holy Roman Empire. Maria Theresia 1740-1780. 1/4 Taler, 1742, 6.80g (KM1695). Grey-silver patina with very good details and some light filling on obverse. Good very fine. **1**



9 Holy Roman Empire. Maria Theresa 1740-1780. Early restrike Taler, 1780-Dated, Vienna mint, signature I.C.-S.F., 28.00g (KM-T1; Hafner 19a). Strong details on both sides, good very fine. **1**



10 Holy Roman Empire. Maria Theresa 1740-1780. Early restrike Taler, 1780-Dated, Guenzburg mint, signature S.F., 27.86g (KM-T1; Hafner 27a). Some underlying lustre, some small scratches on the reverse and a couple of bumps on the edge. About very fine. **1**



11 Holy Roman Empire. Maria Theresa 1740-1780. Early restrike Taler, 1780-Dated, Guenzburg mint, signature S.F., 27.85g (KM-T1; Hafner 28a). Attractive details on both sides with remaining lustre, some insignificant nicks on the obverse. Very fine. **1**



12 Holy Roman Empire. Maria Theresa 1740-1780. Early restrike Taler, 1780-Dated, Guenzburg mint, signature S.F., 27.87g (KM-T1; Hafner 30c). Attractive details, cleaned with some scratches on both sides. About very fine. **1**



13 Holy Roman Empire. Maria Theresa 1740-1780. Early restrike Taler, 1780-Dated, Guenzburg mint, signature S.F., 27.84g (KM-T1; Hafner 34c). Even wear on both sides, cleaned. Good fine. **1**



14 Holy Roman Empire. Maria Theresa 1740-1780. Early restrike Taler, 1780-Dated, Milan mint, signature S.F., 27.67g (KM-T1; Hafner 36a). Good details, some minor adjustment marks and small nicks on the periphery of reverse, otherwise very fine. **1**



15 Holy Roman Empire. Maria Theresa 1740-1780. Early restrike Taler, 1780-Dated, V e attractive mint, signature S.F., 27.60g (KM-T1; Hafner 37a). Dull silver patina, some wear on the portrait and significant scratches on the reverse. About very fine. **1**



16 Holy Roman Empire. Franz II, 1792-1835. Taler, 1821M, Milan mint, 27.64g (KM21 62; Dav. 7). Attractive details and some lustre, especially on the reverse, a couple of hairlines. Very fine. **1**



17 Holy Roman Empire. Franz II, 1792-1835. Taler, 1823A, Vienna mint, 28.00g (KM2 162; Dav. 7). Excellent details, appealing silver toning and slight wear on the obverse. Very fine. **1**



18 Holy Roman Empire. Franz Joseph I, 1848-1916. 20 Kreuzer, 1852A, Vienna mint, 4.35g (KM22.11). Very sharp details, with some remaining lustre on the periphery. Uncirculated. **1**



19 Belgium. Leopold I, 1831-1865. 5 Francs, 1853, Royal Wedding, Medallic issue, Brussels mint, Hyphen between dates variety (KM X2.1). Very attractive details with grey patina on both sides. Very fine. **1**



20 Belgium. Leopold II, 1865-1909. 5 Francs, 1868, Brussels mint, position A variety, 2 4.93g (KM24). Fantastic iridescent patina on both sides with golden highlights on the reverse, sharp details and much underlying lustre. About Uncirculated. **1**



21 Belgium. Leopold II, 1865-1909. Centime, 1875, 2.00g (KM33.1). Fully lustrous coin with red color patina, exceptional details and mirror-like surfaces. Brilliant uncirculated. **1**



22 Belgium. Leopold II, 1865-1909. 2 Centimes, 1876, 4.00g (KM35.1). Excellent red patina with lustre all over the coin on both sides and sharp details. Brilliant uncirculated. **1**



23 Belgium. Leopold II, 1865-1909. 5 Francs, 1876, Brussels mint, 24.00g (KM24). Silver patina with some golden toning, a couple of insignificant bagmarks and small nicks on the periphery. Uncirculated. **1**



24 Belgium. Albert I, 1909-1934. 2 Francs, 1912, 10.00g (KM74). Lustrous example and excellent details for this key date. Uncirculated. **1**



25 Belgium. Albert I, 1909-1934. 5 Francs, 1930, 13.82g (KM97.1). Much lustre, strong details and attractive surfaces. Uncirculated. **1**



26 Belgium. Albert I, 1909-1934. 20 Francs, 1932, position B variety, 19.64g (KM102). Attractive details, with underlying lustre and some minor bagmarks. Good very fine. **1**



27 Belgium. Albert I, 1909-1934. 20 Francs, 1934, position B and legend in French variety, 11.08g (KM103.1). Fully lustrous coin with very strong details, a couple of insignificant bagmarks. About uncirculated. **1**



28 Belgium. Albert I, 1909-1934. 20 Francs, 1934, position A and legend in Dutch variety, 11.00g (KM104.1). Fully lustrous coin with very strong details, a couple of insignificant bagmarks. About uncirculated. **1**



29 Belgium. Leopold III, 1934-1950. 50 Francs, 1935, Brussels mint, position B and coin alignment variety, 22.00g (KM106.1). Bright silver patina with some gold toning, excellent details for this artistically designed coin which has the look of a medal. Extremely fine. Struck to commemorate Brussels Exposition and Railway centennial. **1**



30 Belgium. Baudouin I, 1951-1993. 50 Francs, 1958, coin alignment and Legend in French variety, 12.61g (KM150.1). Extraordinary silver patina with some golden tone on the periphery on both sides, very modern design with strong details. Uncirculated. ^[1] Struck to commemorate Brussels World Fair. **1**



31 Belgium Congo. Leopold II, 1885-1908. 10 Centimes, 1888, Brussels mint (KM4). Beautiful red-brown colour with cartwheel lustre. Graded MS65RB PCGS. **1**



32 Bolivia. Republic, 1826-. 8 Soles, 1844 PTS R, 26.83g (KM103). Attractive grey toning on both sides. Very good details for issue. Good very fine. **1**



33 Bolivia. Republic, 1826-. 8 Soles, 1849 PTS FM, 26.86g (KM109). Good details with attractive old cabinet patina, very fine. **1**



34 Bolivia. Republic, 1826-. 5 Centavos, 1872 FE, 1.06g (KM156.3). Exceptional specimen of this 1 year type. Nine stars at bottom and full lustre on both sides. Uncirculated. **1**



35 British Guiana and West Indies. Victoria, 1837-1901. 4 Pence, 1891 (KM26). Magnificent design with light toning on the reverse, cartwheel lustre and sharp details. Graded MS64 PCGS. **1**



36 Bulgaria. Ferdinand I, 1887-1918. 5 Leva, 1894, 25.00g (KM18). Very strong details, a slight bump on the edge, attractive golden patina on the periphery of obverse. About Uncirculated. **1**



37 Bulgaria. Ferdinand I, 1887-1918. 2 Stotinki, 1912, Kremnitz mint (KM23.2). Bright brown patina, sharp details and full lustre. Graded MS63BN NGC. **1**



38 Bulgaria. Ferdinand I, 1887-1918. 50 Stotinki, 1913, Kremnitz mint, reeded edge (KM30). Sharp details with exquisite surfaces and full lustre. Graded MS62 NGC. **1**



39 Bulgaria. Ferdinand I, 1887-1918. 1 Leva, 1913, 5.00g (KM31). Strong details with attractive patina and lustre. Good extremely fine. **1**



40 Burma. Pagan, CS1207-1214 (1846-1853). Kyat (Ruppee), CS1214 (1852), lettering around peacock variety, 11.46g (KM10). Grey silver patina and attractive details. Good very fine. **1**



41 Canada. Elizabeth II, 1952-2022. Specimen original set 1980 comprising 7 coins: 1 silver dollar Arctic Territories, 1 dollar, 50 cents, 25 cents, 10 cents, 5 cents and 1 cent, issued by Royal Canadian Mint/ Monnaie Royale Canadienne (SS66). Proof, in original box with some defects on interior leather cover with CoA. **1**



42 Czech Republic. 50 Korun, 1968, 50 years of Czechoslovakia, 20.12g (KM65). Lustrous example of this impressive coin with modern design. Golden blue patina on both sides. Uncirculated. **1**



43 China. Republic, 1915-1948. 10 Cash (10 Wen), ND (1920), 6.87g (KM-Y303). Brown chocolate patina with strong details and attractive surfaces. Good extremely fine. **1**



44 Colombia. Republic 1886-. 20 Centavos, 1897, Brussels mint, 5.00g (KM189; Hernández 444). One year type. Very sharp details with underlying lustre on both sides. Good extremely fine. Ex Varesi, Asta 72 lot 830. **1**



45 Croatia. Independent State of Croatia, 1941-1945. 2 Kune, 1941, 2.20g (KM2). Sharp details, attractive patina and lustre. Good extremely fine. **1**



46 Cyprus. Victoria, 1837-1901. 1/4 Piastre, 1879, Royal mint, 2.81g (KM1.1; Fitikides 1). Dark brown patina, very attractive details, a scratch on the reverse and some traces of corrosion. Good very fine. **1**



47 Cyprus. Victoria, 1837-1901. 1/2 Piastre, 1879, Royal mint, 5.79g (KM2; Fitikides 13). Chocolate brown patina, excellent details on both sides. Good very fine. **1**



48 Cyprus. Victoria, 1837-1901. Piastre, 1879, Royal mint, 11.54g (KM3.1; Fitikides 26). Attractive details with brown patina. Good very fine. **1**



49 Cyprus. Victoria, 1837-1901. 1/4 Piastre, 1880, Royal mint, 3.00g (KM1.1; Fitikides 2). Excellent details with chocolate brown patina and some underlying lustre. Good very fine. **1**



50 Cyprus. Victoria, 1837-1901. 1/4 Piastre, 1881, Royal mint, 2.89g (KM1.1; Fitikides 3). Bright brown patina, some old traces of cleaning on the periphery, attractive details. Very fine. **1**



51 Cyprus. Victoria, 1837-1901. 1/2 Piastre, 1881, Royal mint, 5.78g (KM2; Fitikides 14). Chocolate brown patina, excellent details and impressive fields. Extremely fine. **1**



52 Cyprus. Victoria, 1837-1901. Piastre, 1881, Royal mint, variety with thin "1" of the date, 11.15g (KM3.1; Fitikides 27). Uniform wear on both sides, dark patina and a couple of small old knocks. **1**



53 Cyprus. Victoria, 1837-1901. 1/4 Piastre, 1881H, Ralph Heaton & Sons mint, variety with bigger "81" of the date, 2.94g (KM1.1; Fitikides 4). Uniform dark brown patina and very attractive details. Good very fine. **1**



54 Cyprus. Victoria, 1837-1901. 1/2 Piastre, 1881H, Ralph Heaton & Sons mint, variety with first "8" of the date bigger than second, 5.70g (KM2; Fitikides 15). Dark brown patina with excellent details. Good very fine. **1**



55 Cyprus. Victoria, 1837-1901. Piastre, 1881H, Ralph Heaton & Sons mint, variety with thin "1" of the date, 10.93g (KM3.1; Fitikides 28). Uniform wear and brown patina. About fine. **1**



56 Cyprus. Victoria, 1837-1901. 1/4 Piastre, 1882H, Ralph Heaton & Sons mint, 3.00g (KM1.1; Fitikides 5). Attractive dark patina and strong details for this scarce date, a couple of scratches on obverse. About extremely fine. **1**



57 Cyprus. Victoria, 1837-1901. 1/2 Piastre, 1882H, Ralph Heaton & Sons mint, 5.62g (KM2; Fitikides 16). Extensive wear on both sides, corrosion on obverse, legends clear on both sides and dark patina. Very good. **1**



58 Cyprus. Victoria, 1837-1901. 1/4 Piastre, 1884, Royal mint, 3.00g (KM1.1; Fitikides 6). Attractive dark patina with strong details, some rubbing and discoloration on reverse. Good very fine. **1**



59 Cyprus. Victoria, 1837-1901. 1/2 Piastre, 1884, Royal mint, 5.65g (KM2; Fitikides 17). Uniform wear with dark brown patina, some deposits on letters on both sides, a decent coin for this key date. Fine. **1**



60 Cyprus. Victoria, 1837-1901. Piastre, 1885, Royal mint, 11.67g (KM3.2; Fitikides 31). Chocolate brown patina with very attractive details. Good very fine. **1**



61 Cyprus. Victoria, 1837-1901. 1/2 Piastre, 1886, Royal mint, 5.78g (KM2; Fitikides 19). Dark brown patina with uniform wear on both sides. About very fine. **1**



62 Cyprus. Victoria, 1837-1901. Piastre, 1886, Royal mint, 11.26g (KM3.2; Fitikides 32). Chocolate brown patina, very attractive details. Good very fine. **1**



63 Cyprus. Victoria, 1837-1901. 1/4 Piastre, 1887, Royal mint, 2.94g (KM1.1; Fitikides 8). Dark brown patina with excellent details and some underlying lustre. About extremely fine. **1**



64 Cyprus. Victoria, 1837-1901. 1/2 Piastre, 1887, Royal mint, 5.74g (KM2; Fitikides 20). Very attractive details with chocolate brown patina. Very fine. **1**



65 Cyprus. Victoria, 1879-1901. Piastre, 1887, Royal mint (KM3). Strong details, with beautiful dark-chocolate patina and some underlying lustre on both sides. Graded AU58 PCGS. **1**



66 Cyprus. Victoria, 1837-1901. 1/2 Piastre, 1889, Royal mint, 5.81g (KM2; Fitikides 2 1). Dark brown patina, very attractive details. Good very fine. **1**



67 Cyprus. Victoria, 1837-1901. Piastre, 1889, Royal mint, 11.32g (KM3.2; Fitikides 3 4). Brown chocolate color and attractive details, some old cleaning attempt. About very fine. **1**



68 Cyprus. Victoria, 1837-1901. 1/2 Piastre, 1890, Royal mint, 5.71g (KM2; Fitikides 2 2). Dark patina with attractive details. Very fine. **1**



69 Cyprus. Victoria, 1837-1901. Piastre, 1890, Royal mint, 11.71g (KM3.2; Fitikides 3 5). Bright brown patina, attractive details. Very fine. **1**



70 Cyprus. Victoria, 1837-1901. 1/2 Piastre, 1891, Royal mint, 5.77g (KM2; Fitikides 2 3). Brown patina with some gold-red colour scattered on the coin on both sides, a knock on reverse 9 o'clock. Very fine. **1**



71 Cyprus. Victoria, 1837-1901. Piastre, 1891, Royal mint, 11.70g (KM3.2; Fitikides 3 6). Brown uniform patina with attractive details. Good fine. **1**



72 Cyprus. Victoria, 1837-1901. 1/4 Piastre, 1895, Royal mint, 2.81g (KM1.1; Fitikides 9). Dark brown patina with very attractive details. Good very fine. **1**



73 Cyprus. Victoria, 1837-1901. Piastre, 1895, Royal mint, 11.59g (KM3.2; Fitikides 37). Attractive uniform brown patina with strong details. Very fine. **1**



74 Cyprus. Victoria, 1837-1901. 1/2 Piastre, 1896, Royal mint, 5.54g (KM2; Fitikides 24). Dark brown patina, extensive but uniform wear for this key date half piastre. About very good. **1**



75 Cyprus. Victoria, 1837-1901. Piastre, 1896, Royal mint, 11.00g (KM3.2; Fitikides 38). Attractive details with brown patina. Very fine. **1**



76 Cyprus. Victoria, 1837-1901. 1/4 Piastre, 1898, Royal mint, 2.74g (KM1.1; Fitikides 10). Bright brown patina on both sides, attractive details. Good fine. **1**



77 Cyprus. Victoria, 1837-1901. 1/4 Piastre, 1900, Royal mint, 2.86g (KM1.2; Fitikides 11). Attractive details, uniform wear on both sides and dark patina. Good fine. **1**



78 Cyprus. Victoria, 1837-1901. 1/2 Piastre, 1900, Royal mint, 5.85g (KM2; Fitikides 25). Uniform wear, some corrosion, especially on the reverse, but nevertheless an acceptable piece for this key date. Fine. **1**



79 Cyprus. Victoria, 1837-1901. Piastre, 1900, Royal mint, 11.24g (KM3.2; Fitikides 39). Dark brown patina, uniform wear and some rubbing on reverse. About very fine. **1**



80 Cyprus. Victoria, 1837-1901. 1/4 Piastre, 1901, Royal mint, 2.79g (KM1.2; Fitikides 12). Dark brown patina and decent details. Fine. **1**



81 Cyprus. Victoria, 1837-1901. 3 Piastres, 1901, Royal mint, 1.84g (KM4; Fitikides 40). Silver-grey patina and attractive details. Very fine. **1**



82 Cyprus. Victoria, 1837-1901. 4 1/2 Piastres, 1901, Royal mint, 2.82g (KM5; Fitikides 41). Extensive lustre, very attractive details for issue. About extremely fine. **1**



83 Cyprus. Victoria, 1837-1901. 9 Piastres, 1901, Royal mint, 5.65g (KM6; Fitikides 42). Grey silver patina with some underlying lustre and excellent details on both sides. About extremely fine. **1**



84 Cyprus. Victoria, 1837-1901. 18 Piastres, 1901, Royal mint, 11.30g (KM7; Fitikides 43). Attractive details, very fine. **1**



85 Cyprus. Edward VII, 1901-1910. 1/4 Piastre, 1902, Royal mint, 2.86g (KM8; Fitikides 44). Dark brown patina and strong details. About extremely fine. **1**



86 Cyprus. Edward VII, 1901-1910. 1/4 Piastre, 1905, Royal mint, 2.85g (KM8; Fitikides 45). Chocolate brown patina, very attractive details and some dirt on obverse. Good very fine. **1**



87 Cyprus. Edward VII, 1901-1910. 9 Piastres, 1907, Royal mint, 5.57g (KM9; Fitikides 49). Attractive details for issue and appealing silver patina. About very fine. **1**



88 Cyprus. Edward VII, 1901-1910. 18 Piastres, 1907, Royal mint, 11.10g (KM10; Fitikides 50). Attractive details for issue and appealing silver patina, one of the British Cypriot rarities. About very fine. **1**



89 Cyprus. Edward VII, 1901-1910. 1/4 Piastre, 1908, Royal mint, 2.76g (KM8; Fitikides 46). Uneven brown patina and some overall corrosion, the key date of Edward's 1/4 piastre series. Fine. **1**



90 Cyprus. Edward VII, 1901-1910. 1/2 Piastre, 1908, Royal mint, 5.74g (KM11; Fitikides 47). Uneven brown patina and excellent details for issue. Good very fine. **1**



91 Cyprus. Edward VII, 1901-1910. Piastre, 1908, Royal mint, 11.44g (KM12; Fitikides 48). Chocolate brown patina with very attractive details for issue. Very fine. **1**



92 Cyprus. George V, 1910-1936. 9 Piastres, 1913, Royal mint, 5.58g (KM13; Fitikides 64). Attractive details for this key date. Very fine. **1**



93 Cyprus. George V, 1910-1936. 18 Piastres, 1913, Royal mint, 11.29g (KM14; Fitikides 67). Grey silver patina and strong details for issue, a real rarity. Good very fine. **1**



94 Cyprus. George V, 1910-1936. 9 Piastres, 1919, Royal mint, (KM13; Fitikides 65). Attractive grey silver patina with good details. Graded VF25 NGC. **1**



95 Cyprus. George V, 1910-1936. 4 1/2 Piastres, 1921, Royal mint, 2.86g (KM15; Fitikides 63). Grey silver patina and strong details. Good very fine. **1**



96 Cyprus. George V, 1910-1936. 9 Piastres, 1921, Royal mint, 5.64g (KM13; Fitikides 66). Very attractive grey silver patina and strong details on both sides. About extremely fine. **1**



97 Cyprus. George V, 1910-1936. 18 Piastres, 1921, Royal mint, 11.27g (KM14; Fitikides 68). Silver patina and attractive details. Very fine. **1**



98 Cyprus. George V, 1910-1936. 1/4 Piastre, 1922, Royal mint, 3.00g (KM16; Fitikides 51). Attractive chocolate brown patina and strong details. About extremely fine. **1**



99 Cyprus. George V, 1910-1936. 1/2 Piastre, 1922, Royal mint, 5.86g (KM17; Fitikides 53). Brown patina and attractive details for this key date. Very fine. **1**



100 Cyprus. George V, 1910-1936. Piastre, 1922, Royal mint, 11.81g (KM18; Fitikides 58). Brown patina with some discoloration on both sides, attractive details. Very fine. **1**



101 Cyprus. George V, 1910-1936. 1/4 Piastre, 1926, Royal mint, 2.94g (KM16; Fitikides 52). Attractive dark brown patina and excellent details. About extremely fine. **1**



102 Cyprus. George V, 1910-1936. 1/2 Piastre, 1927, Royal mint, 5.60g (KM17; Fitikides 54). Attractive chocolate brown patina and strong details, a scratch on the reverse. Good very fine. **1**



103 Cyprus. George V, 1910-1936. Piastre, 1927, Royal mint, 11.54g (KM18; Fitikides 59). Strong details with chocolate brown patina. Good very fine. **1**



104 Cyprus. George V, 1910-1936. 45 Piastres, 1928, Royal mint, 28.34g (KM19; Fitikides 69). An exquisite example with some lustre and very sharp details. Good extremely fine. **1**



105 Cyprus. George V, 1910-1936. 1/2 Piastre, 1930, Royal mint, 5.80g (KM17; Fitikides 55). Very strong details, superb chocolate brown patina and impeccable fields. Good extremely fine. **1**



106 Cyprus. George V, 1910-1936. Piastre, 1930, Royal mint, 11.42g (KM18; Fitikides 60). Attractive bright brown patina and attractive details. Good very fine. **1**



107 Cyprus. George V, 1910-1936. 1/2 Piastre, 1931, Royal mint, 5.79g (KM17; Fitikides 56). Bright brown patina and good details. Very fine. **1**



108 Cyprus. George VI, 1936-1952. 18 Piastres, 1938, Royal mint (KM26; Fitikides 88). Sharp details with attractive light toning and beautiful cartwheel lustre both on obverse and reverse. Graded AU58 PCGS. **1**



109 Cyprus. George VI, 1936-1952. Shilling, 1949, Royal mint (KM31; Fitikides 87). Sharp details with beautiful surfaces and cartwheel lustre. An exquisite example. Graded MS64 PCGS. **1**



110 Egypt. Kingdom, Fuad I, AH1341-1355/1922-1936. 10 Piastres, AH1348/1929, mint mark BP, 14.00g (KM350). Sharp details, grey silver patina with abundance of lustre, especially on the reverse. Extremely fine. **1**



111 Ethiopia. Menelik II, 1889-1913. 1 Birr, 1892, 28.00g (KM19). Excellent details for issue and some underlying lustre on both sides. Extremely fine. **1**



112 France. Louis Philippe I, 1830-1848. 5 Francs, 1838MA, Marseille mint, 24.67g (KM749.10). Uniform wear on both sides, attractive details, cleaned. Good fine. **1**



113 France. Third Republic, 1871-1940. 20 Francs, 1938 (KM879). Marvelous example with full lustre on both sides. Excellent details. Graded MS64 PCGS. **1**



114 France. Fifth Republic, 1958-. 6,55957 Francs (=1 Euro), 1999, Europa, Monnaie de Paris, 22.20g (KM1255). Proof, in its original box with CoA. **1**



115 France. Fifth Republic, 1958-. 6,55957 Francs (=1 Euro), 1999, Europa, Monnaie de Paris, 22.20g (KM1255). Proof, in its original box with CoA. **1**



116 German States. Baden, Friedrich II, 1904-1918. 2 Mark, 1906, Golden Wedding Anniversary, 11.19g (KM276). Old cabinet golden silver patina and excellent details. Extremely fine. **1**



117 German States. Baden, Friedrich II, 1904-1918. 5 Mark, 1913G, 27.63g (KM281). Attractive bright example with minor scratches and beautiful cartwheel lustre. Extremely fine. **1**



118 German States. Bavaria, Carl Albrecht, 1726-1745. 3 Kreuzer, 1728, 1.49g (KM400). Very sharp details, some lustre and silver patina. Extremely fine. **1**



119 German States. Bavaria, Carl Albrecht, 1726-1745. 3 Kreuzer, 1734, 1.63g (KM426). Attractive details with some corrosion on the obverse. About very fine. **1**



120 German States. Bavaria, Carl Albrecht, 1726-1745. 3 Kreuzer, 1736, 1.62g (KM426). Superb details, lustrous example. Outstanding condition. About uncirculated. Ex London Coin Galleries LTD, Auction 4 Lot 1552. **1**



121 German States. Maximilian III Joseph, 1745-1777. Taler, 1771A, 27.94g (KM519.2; Dav. 1954). Attractive details for issue. Very fine. **1**



122 German States. Otto, 1886-1913. 5 Mark, 1900D, 27.71g (KM512). Very attractive details with much lustre both on obverse and reverse. Extremely fine. **1**



123 German States. Brunswick-Lüneburg-Calenberg-Hannover, George III (King of Great Britain) 1760-1814. 2/3 Taler, 1807 GWM, 13.00g (KM422). Good details with some underlying lustre on the obverse. Good very fine. **1**



124 German States. Halberstadt, Christian of Brunswick-Wolfenbüttel, 1616-1624. 1/4 Taler, 1618, 1.23g (KM9). Grey-silver patina and strong details for issue. Good very fine. **1**



125 German States. Hannover, Ernst August V, 1837-1851. Taler, 1846A, 22.25g (KM197.1). Excellent details and great surfaces. Extremely fine. **1**



126 German States. Hesse-Darmstadt, Ernst Ludwig, 1678-1739. 2 Albus, 1693, 1.78g (KM82). Silver patina, very attractive details and some underlying lustre. Very fine. **1**



127 German States. Hesse-Darmstadt, Ernst Ludwig, 1678-1739. 2 Albus, 1694, 2.16g (KM82). Old cabinet grey patina, strong details. Good very fine. **1**



128 German States. Hesse-Darmstadt, Ernst Ludwig, 1678-1739. 2 Albus, 1704, 1A R, 1.93g (KM82). Attractive silver patina and very good details. Very fine. **1**



129 German States. Hesse-Darmstadt, Ludwig VIII, 1739-1768. 2 Kreuzer, 1743, GS F, 0.92g (KM173). Great details with attractive toning. Very fine. Ex London Coin Galleries LTD, Auction 4 Lot 1566. **1**



130 German States. Hesse-Darmstadt, Ludwig VIII, 1739-1768. 2 Kreuzer, 1744, AK, 1.01g (KM173). Lustrous coin, very sharp details and a lot of lustre. Good extremely fine. Ex London Coin Galleries LTD, Auction 4 Lot 1567. **1**



131 German States. Hesse-Darmstadt, Ludwig VIII, 1739-1768. 4 Kreuzer, 1748, 1.81g (KM184). Fully lustrous coin with superb details. Almost uncirculated. **1**



132 German States. Hesse-Darmstadt, Ernst Ludwig, 1892-1918. 5 Mark, 1899A, 27.55g (KM369). Uniform wear on both sides, some insignificant nicks on the periphery and grey silver patina. About very fine. **1**



133 German States. Mainz, Anselm Franz von Ingelheim, 1679-1695. 2 Albus, 1691A D, 1.69g (KM184). Attractive patina and very good details surviving. Very fine. **1**



134 German States. Mecklenburg-Schwerin, Friedrich Franz IV, 1897-1918. 5 Mark, 1904, Wedding of Friedrich Franz, 27.82g (KM334). Sharp details with a lot of lustre on both sides. About uncirculated. **1**



135 German States. Pfalz, Johann Wilhelm von Neuburg, 1690-1716. 2 Albus, 1708 I MW, Heidelberg mint, 1.72g (KM144). Grey-silver tone and very good details. About very fine. **1**



136 German States. Prussia, Friedrich Wilhelm III, 1797-1840. Taler, 1840A, 22.27g (KM419). Excellent details, dark patina on the obverse and silver mirror-like surfaces on the reverse. Extremely fine. **1**



137 German States. Prussia, Wilhelm I, 1861-1888. Vereinstaler (Taler), 1861A, Berlin mint, 18.50g (KM488; Dav. 778). Grey silver patina with underlying lustre and some minor hairlines on both sides. Uncirculated Struck to commemorate the coronation of Wilhelm and Augusta. **1**



138 German States. Prussia, Wilhelm I, 1861-1888. Taler "Siegestaler", 1871A, Victory over France, 17.50g (KM500). Golden silver patina, very sharp details and some remaining lustre, especially on the reverse. About uncirculated. **1**



139 German States. Regensburg (Free City), 1245-1803. 2 Kreuzer, 1634, "1034" error date instead of "1634", 1.11g (KM73). Silver toning, attractive details accompanied by a very interesting error date! Slightly off center and underlying lustre both on obverse and reverse. Good very fine. **1**



140 German States. Regensburg (Free City), 1245-1803. Heller, 1699, 0.52g (KM192). Sharp details, uniface with some attractive brown patina and green colour. Good very fine. **1**



141 German States. Regensburg (Free City), 1245-1803. Kreuzer, 1764B, 0.80g (KM364). Attractive patina with a lot of lustre. A really exceptional coin with a mintage of only 4,500. Almost uncirculated. **1**



142 German States. Regensburg (Free City), 1245-1803. Kreuzer, 1776, 0.76g (KM430). Old cabinet patina and strong details. Extremely fine. **1**



143 German States. Regensburg (Free City), 1245-1803. 1 Pfenning, 1790R, 0.30g (KM447). Lustrous example with attractive patina and exceptionally sharp details. Uncirculated. **1**



144 German States. Regensburg (Free City), 1245-1803. Heller, 1796, 0.60g (KM470). Attractive brown patina, some deposits and very strong details. Good very fine. **1**



145 German States. Sachsen-Neu-Weimar, Wilhelm 1641-1662. 1/24 Taler (Groschen), 1653, 0.58g (Merseburger 3897). Attractive details with light grey silver toning, underlying lustre, slightly clipped at 12 o'clock and small planchet break at 2 o'clock. Very fine. **1**



146 German States. Saxony (Albertinian Line), Christian II, Johann Georg and August, 1591-1611. Taler, 1595, HB, Dresden mint 28.69g (KM314; Dav. 9820). Grey silver patina, some marks on the periphery and very good details. Very fine. **1**



147 German States. Stolberg-Ortenberg, Ludwig Georg, 1562-1618. Groschen, ND (1605), 1.20g (KM6). Attractive details despite the weak strike, some persisting lustre and light grey silver toning. About very fine. **1**



148 German States. Westphalia, Jerome Hieronymus Napoleon, 1807-1813. 1 Cent, 1809C, 1.35g (KM107). Attractive brown patina and even wear on both sides. Good very fine. Ex London Coin Galleries LTD, Auction 4 Lot 1594. Ex WW1 German lieutenant collection. **1**



149 German States. Wurttemberg, Wilhelm II, 1891-1918. 5 Mark, 1904F, 27.75g (KM632). Sharp details with a lot of lustre especially on the reverse. Good extremely fine. **1**



150 Germany. Wilhelm II, 1888-1918. 1/2 Mark, 1918D, Munich mint (KM17). Fully lustrous coin with very sharp details. Graded MS66 PCGS. **1**



151 Germany. Weimar Republic, 1918-1933. 3 Reichsmark, 1925A, Millennium Celebration of the Rhineland (KM46). Excellent details with cartwheel lustre, marvellous light toning and superb eye-appeal. Graded MS64+ NGC. **1**



152 Germany. Weimar Republic, 1918-1933. 3 Reichsmark, 1932D, Goethe, 15.00g (KM76). Very good details. An attractive coin, extremely fine. **1**



153 Germany. Federal Republic, 1948-. 5 Mark, 1960D, 11.23g (KM112.1). Full details and much original lustre remaining. About uncirculated. **1**



154 Germany. Federal Republic, 1948-. 5 Mark, 1963D, 11.15g (KM112.1). Sharp details with much lustre on both sides. About uncirculated. **1**



155 Germany. Federal Republic, 1948-. 5 Mark, 1964G, 11.23g (KM112.1). Excellent details and fully lustrous. Uncirculated. **1**



156 Germany. Federal Republic, 1948-. 5 Mark, 1965D, 11.24g (KM112.1). Sharp details and full cartwheel lustre. Uncirculated. **1**



157 Germany. Federal Republic, 1948-. 10 Marks, 1994G, Karlsruhe mint (KM184). Fantastic proof like specimen with mirror-like surfaces and excellent details. Graded MS66 NGC. Struck to commemorate 250th Birth Anniversary of Johann Gottfried Herder. **1**



158 German East Africa. Wilhelm II, 1888-1918. Pesa, 1890, Berlin mint, 6.53g (KM1; J-710). Fabulous red brown patina with excellent details, attractive mint state coin. Uncirculated. **1**



159 German East Africa. Wilhelm II, 1888-1918. Rupie, 1891 (KM2). Sharp details with exquisite surfaces, minor hairlines on the obverse and fully lustrous. Graded AU58 PCGS. **1**



160 Great Britain. Charles II, 1660-1685. Crown, 1667, London mint, second bust and AN•REG• DECINO NONO on edge, 29.48g (KM422.3; S-3357; Dav. 3775B). Attractive grey silver patina with some remaining lustre, very good details on the obverse. Good fine. **1**



161 Great Britain. William and Mary, 1689-1694. Halfcrown, 1689, London mint, 1st Shield, no pearls and no frosting variety, 14.72g (KM472.1; S-3434). Old cabinet patina, uniform wear on both sides, punchmarks (IR) on obverse. Good fine. **1**



162 Great Britain. William III, 1694-1702. Crown, 1695, London mint, invisible regnal year on edge, 29.44g (KM486; S-3470; Dav. 3781). Silver toning with uniform wear on both sides. Fine. **1**



163 Great Britain. Anne, 1702-1714. Halfcrown, 1709, London mint, 14.57g (KM525.1; S-3604). Struck after Union with plain edge and "OCTAVO" on edge. Grey silver tone, uniform wear on both sides. Fine. **1**



164 Great Britain. George III, 1760-1820. Halfcrown, 1817, London mint, Large Head variety ("Bull" head), 13.88g (KM667; S-3788). Attractive details on obverse and reverse, grey silver patina and beautiful portrait. Very fine. **1**



165 Great Britain. George III, 1760-1820. Halfcrown, 1819, London mint, 13.93g (KM672; S-3789). Very fine details on both sides and silver patina, mount marks at 6 and 12 o'clock. About very fine. **1**



166 Great Britain. George III, 1760-1820. Crown, 1819, London mint, LX on edge variety, 27.82g (KM675; S-3787; Dav. 103). Grey silver toning, uniform wear on both sides. Fine. **1**



167 Great Britain. George IV, 1820-1830. 1 Farthing, 1826, 4.91g (KM697) Chocolate-brown patina with some black spots on the obverse. Very fine. **1**



168 Great Britain. William IV, 1830-1837. Halfcrown, 1836, London mint, 13.90g (KM714.2; S-3834). Old cabinet patina, uniform light wear, eye-appealing coin. About very fine. **1**



169 Great Britain. Victoria, 1837-1901. Crown, 1847, London mint, 28.00g (KM741; S-3882; Dav. 105). Silver toning, attractive crown with the young Victoria's portrait. About very fine. **1**



170 Great Britain. Victoria, 1837-1901. 6 Pence, 1887 (KM759). Beautiful design with grey silver patina, sharp details and underlying lustre on both sides. Graded MS63 PCG S. **1**



171 Great Britain. Victoria, 1837-1901. Crown, 1890, London mint, 28.24g (KM765; S-3921; Dav. 107). Grey-silver patina, attractive details, slightly cleaned, a knock on obverse and a bump on reverse periphery. Very fine. **1**



172 Great Britain. Victoria, 1837-1901. Crown, 1898. London mint, old veiled bust and LXII on edge variety, 28.11g (KM783; S-3937; Dav. 108). Old cabinet patina, attractive details and grey-silver toning. About very fine. **1**



173 Great Britain. Victoria, 1837-1901. Trade Dollar, 1899B, Bombay mint, 26.79g (KM-T5). Grey silver patina and strong details. Good very fine. **1**



174 Great Britain. Edward VII, 1901-1910. Crown, 1902, London mint, 28.08g (KM803; S-3978; Dav. 109). Attractive silver patina, good details for issue, a decent one year type crown. About very fine. **1**



175 Great Britain. Edward VII, 1901-1910. 3 Pence, 1904, Royal mint (KM797.1; S-3984). Dark rainbow patina with sharp details and full lustre, a real gem example of a 3 Pence Maundy coin. Graded MS65 NGC. **1**



176 Great Britain. Edward VII, 1901-1910. Farthing, 1909, 2.77g (KM792). Exceptional chocolate dark brown patina, very sharp details and some lustre, especially on the periphery. Extremely fine. **1**



177 Great Britain. George VI, 1936-1952. Crown (5 Shillings), 1951, Royal mint (KM880; S-4111). Lustrous example with excellent details and mirror-like surfaces. Graded PL62 NGC. Struck to commemorate Festival of Britain. **1**



178 Great Britain. Elizabeth II, 1952-2022. 25 New Pence, 1977, Silver Jubilee, 28.27g (KM920a). Proof in original box. **1**



179 Great Britain. Elizabeth II, 1952-2022. Crown, 1980, 80th anniversary of birth of Queen Mother, 28.28g (KM921a). Proof in original box with CoA. **1**



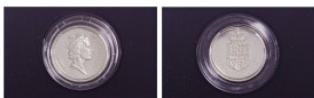
180 Great Britain. Elizabeth II, 1952-2022. 25 New Pence, 1981, Wedding of Prince Charles and Lady Diana, 28.27g (KM925a). Proof in original box. **1**



181 Great Britain. Elizabeth II, 1952-2022. Pound, 1984, Scottish Thistle, Silver Piedfort, 19.00g (KM P4). Proof in box with CoA. **1**



182 Great Britain. Elizabeth II, 1952-2022. Pound, 1985, 3rd portrait, Welsh Leek, 9.50g (KM941). Proof in box with CoA. **1**



183 Great Britain. Elizabeth II, 1952-2022. Pound, 1988, 3rd portrait, Crowned Royal Shield, 9.50g (KM954a). Proof in box with CoA. **1**



184 Great Britain. Elizabeth II, 1952-2022. Pound, 1988, Silver Piedfort, Crowned Royal Shield, 19.00g (P8). Proof in box with CoA. **1**



185 Great Britain. Elizabeth II, 1952-2022. 5 Pounds, 1990, 3rd portrait, 90th anniversary of the birth of the Queen Mother, 28.28g (KM962a). Proof in box with CoA. **1**



186 Great Britain. Elizabeth II, 1952-2022. Lot of (10) pre-decimal coinage comprising: 1 crown 1965, 1/2 Crown 1967, 2 Shillings 1966, 2 x 1 Shilling (English 1963, Scottish 1966), Sixpence 1967, Threepence 1966, Penny 1967, Halfpenny 1967 and Farthing 1954 (KM910, 907, 906, 905, 904, 903, 900, 897, 896, 895). In a plastic presentation case with some small defects. Uncirculated. **1**



187 Great Britain. Elizabeth II, 1952-2022. Complete set of Decimal coinage comprising 1/2 Penny, 1 Penny, 2 Pennies, 5 Pennies, 10 Pennies and 50 pennies of 1975 together with Royal Mint Elizabeth I 1975 small bronze plaquette (7). In plastic presentation case within green envelope. Uncirculated. **1**



188 Greece. Governor I. Kapodistrias 1828-1831. Lepton, 1828, converging rays (KM1; Divo 7; P. Chase 102). Dark brown patina with sharp details, reverse struck from a rusty die. Extremely fine. **1**



189 Greece. Governor I. Kapodistrias 1828-1831. 5 Lepta, 1828, converging rays (KM 2; Divo 5; P. Chase 134b). Attractive brown colour with full details and light corrosion. Graded VF Details, Corrosion NGC. **1**



190 Greece. Governor I. Kapodistrias, 1828-1831. 5 Lepta, 1828, diverging rays and solid circle, 7.11g (KM2; Divo 5; Chase 139). Even wear with a weak centre on reverse and flan problems on the periphery. Rare (R) by P. Chase. Fine. **1**



191 Greece. Governor I. Kapodistrias 1828-1831. 10 Lepta, 1828, converging rays (KM3; Divo 3; P. Chase 166). Uniform chocolate-brown patina with even wear, several bumps on the edge and attractive details. Graded VF Details, Edge damage NGC. **1**



192 Greece. Governor I. Kapodistrias, 1828-1831. 10 Lepta, 1828, converging rays and solid circle, 16.34g (KM3; Divo 3; Chase 167). Even brown patina and wear, two small flan cracks on obverse, otherwise a very decent Kapodistrian coin. About very fine. **1**



193 Greece. Governor I. Kapodistrias 1828-1831. Lepton, 1830, converging rays (KM 5; Divo 7a; P. Chase 209). Fine. Extremely Rare (RRR) by P. Chase. **1**



194 Greece. Governor I. Kapodistrias, 1828-1831. 5 Lepta, 1830, converging rays and pearl circle, 8.00g (KM6; Divo 5a; Chase 233a). Uniform brown patina on both sides, a faint crack at 7 o'clock on obverse, light corrosion in some areas. Good fine. **1**



195 Greece. Governor I. Kapodistrias 1828-1831. 10 Lepta, 1830, converging rays, large planchet (KM8; Divo 3a; P. Chase 266a). Attractive details with planchet cracks, wear on both sides and light corrosion. Graded Fine details NGC. Very rare (RR) by P. Chase. **1**



196 Greece. Governor I. Kapodistrias, 1828-1831. 10 Lepta, 1830, converging rays and pearl circle, 14.36g (KM8; Divo 3a; Chase 274). Chocolate brown patina, even wear on both sides and a couple of knocks on the periphery. Rare (R) by P. Chase. About very fine. **1**



197 Greece. Governor I. Kapodistrias, 1828-1831. 10 Lepta, 1830, converging rays and pearl circle, 15.44g (KM8; Divo 3a; Chase 294). Attractive patina, a lot of knocks on reverse, even wear, decent flan for this rare variety. Very Rare (RR) by P. Chase. Fine. **1**



198 Greece. Governor I. Kapodistrias, 1828-1831. 10 Lepta, 1830, converging rays (KM8; Divo 3a; P. Chase 302). Excellent details, brown-chocolate patina with some flan flaws as usual and very light wear on high points. About extremely fine. **1**



199 Greece. Governor I. Kapodistrias, 1828-1831. 10 Lepta, 1830, converging rays (KM8; Divo 3a; P. Chase 311). Dark patina, evidence of some cleaning and corrosion in both sides, especially on reverse, although attractive details. Fine/Very fine. **1**



200 Greece. Governor I. Kapodistrias, 1828-1831. Lepton, 1831, converging rays (KM9; Divo 8; P. Chase 341). Very good. **1**



201 Greece. Governor I. Kapodistrias, 1828-1831. 10 Lepta, 1831, 13.66g (KM12; Divo 4). Worn coin with numerous nicks and bumps and brown patina. About very good. **1**



202 Greece. Governor I. Kapodistrias, 1828-1831. 10 Lepta, 1831, 16.10g (KM12; Div o 4; Chase 428). Dark brown patina with strong details on both sides, a very attractive type coin for any collection. Good very fine. **1**



203 Greece. Governor I. Kapodistrias, 1828-1831. 10 Lepta, 1831, 12.30g (KM12; Div o 4; Chase 436). Bright brown patina, very attractive details, some flan flaws especially on reverse. Very fine. **1**



204 Greece. Governor I. Kapodistrias, 1828-1831. 20 Lepta, 1831, 34.78g (KM11; Div o 2; Chase 485). Very attractive details especially on reverse, uniform brown patina and quality flan for issue, some minors scratches on obverse. Good very fine. **1**



205 Greece. Governor I. Kapodistrias, 1828-1831. 20 Lepta, 1831, 31.13g (KM11; Div o 2; Chase 495). Brown patina, a lot of flan flaws on both sides. Rare (R) by P. Chase. Fine. **1**



206 Greece. King Otto, 1832-1862. 2 Lepta, ND (1833), Pattern by Ertel, Munich mint (KM Pn7; Divo P41). Brown patina with some wear on both sides. Very fine. **1**



207 Greece. King Otto, 1832-1862. 2 Lepta, 1833, first type, Munich mint (KM14; Divo 25b). Attractive brown-chocolate patina with underlying lustre. Graded AU58 PCGS. **1**



208 Greece. King Otto, 1832-1862. 1/4 Drachma, 1833, First Type, Munich mint (KM18; Divo 16a). Very attractive details. Graded AU Details, Cleaned NGC. **1**



209 Greece. King Otto, 1832-1862. 1/2 Drachma, 1833, first type, Munich mint (KM19; Divo 14a). Fine, holed. **1**



210 Greece. King Otto, 1832-1862. Drachma, 1833A, First Type, Paris mint (KM15; Divo 12b). Attractive grey silver patina, excellent details with some underlying lustre. Graded AU Details, Obv Tooled NGC. **1**



211 Greece. King Otto, 1832-1862. 5 Drachmai, 1833A, First Type, Paris mint, 22.26g (KM20; Divo 10b; Dav. 115). Attractive details with uniform wear on both sides, possibly cleaned in the past. Very fine. **1**



212 Greece. King Otto, 1832-1862. 5 Drachmai, 1833A, First Type, Paris mint, 22.24g (KM20; Divo 10b; Dav. 115). Good details, uniform wear. About very fine. **1**



213 Greece. King Otto, 1832-1862. 5 Drachmai, 1833, First type, Munich mint (KM20, Divo 10a; Dav115). Attractive silver patina and good details. Very fine. **1**



214 Greece. King Otto, 1832-1862. 2 Lepta, 1839, first type, Athens mint (KM14; Divo 25g). Attractive brown patina, very good details on obverse and reverse with pleasant eye-appeal. Graded XF45 PCGS. **1**



215 Greece. King Otto, 1832-1862. Lepton, 1840, first type, Athens mint (KM13; Divo 29g). Dark brown patina with excellent details on both sides. Very fine. **1**



216 Greece. King Otto, 1832-1862. 5 Lepta, 1847, third type, Athens mint (KM28; Divo 23a). Brown patina. A decent coin for this scarce type. Fine. **1**



217 Greece. King Otto, 1832-1862. Lepton, 1848, third type, Athens mint (KM26; Divo 31b). Very attractive details and some planchet flaws on the obverse. Very fine. **1**



218 Greece. King Otto, 1832-1862. 10 Lepta, 1848, third type, Athens mint (KM29; Divo 20b). Attractive details with beautiful dark-brown chocolate patina, planchet flaws on the reverse. Graded AU50 PCGS. **1**



219 Greece. King Otto, 1832-1862. 2 Lepta, 1849, third type, Athens mint (KM28; Divo 27c). Pleasant eye-appeal with usual light flan flaws on the obverse. Very fine. **1**



220 Greece. King Otto, 1832-1862. 10 Lepta, 1849, third type, Athens mint, Small Crown (KM29; Divo 20c). Attractive brown patina with uniform wear on both sides. Graded XF40 PCGS. **1**



221 Greece. King Otto, 1832-1862. 1/2 Drachma, 1855, second type, Vienna mint, variety with dot (in front of head) (KM34; Divo 15b). Uniform wear on both sides. Decent coin for this type. About very fine. **1**



222 Greece. King Otto, 1832-1862. Lot with 3 coins, comprising : 2 Lepta, 1839 (KM14; Divo 25g); 5 Lepta, unknown date (KM16; Divo -); 10 Lepta, 1837 (KM17; Divo 18c). Mixed conditions, Good to Fine. **1**



223 Greece. King George I, 1863-1913. Drachma, 1873A, First Type, Paris mint (KM38; Divo 53b; IV3). Attractive coin with great detail on both sides, grey patina and underlying lustre. Graded AU58 NGC. **1**



224 Greece. King George I, 1863-1913. 2 Drachmai, 1873A, First Type, Paris mint, 10.00g (KM39; Divo 51b; IV4). Very attractive details and light wear. Very fine. **1**



225 Greece. King George I, 1863-1913. 20 Lepta, 1874, first portrait, Paris mint (KM44; Divo 56a; IV9). Sharp details with beautiful surfaces and lustre. Graded MS62 PCGS. **1**



226 Greece. King George I, 1863-1913. 50 Lepta, 1874A, Paris mint (KM37; Divo 55 b). Attractive dark grey toning, strong details and underlying lustre on both side. Graded MS62 PCGS. **1**



227 Greece. King George I, 1863-1913. 5 Drachmai, 1875A, First Type, Paris mint, variety with reversed anchor, 24.87g (KM46; Divo 50a; IV10.1; Dav. 117). Grey silver tone with uniform light wear, very attractive details with a few marks on the obverse, very scarce in this quality for this elusive variety. Good very fine. **1**



228 Greece. King George I, 1863-1913. 5 Drachmai, 1875A, First Type, Paris mint (KM46; Divo 50a; IV10; Dav. 117). Very attractive details with a small edge knock on the periphery of the obverse. Very fine. **1**



229 Greece. King George I, 1863-1913. 5 Drachmai, 1876A, Paris mint (KM46; Divo 50b; IV10; Dav. 117). Attractive details, minor hairlines and some remaining lustre on the periphery, especially on the reverse. Graded XF45 NGC. **1**



230 Greece. King George I, 1863-1913. Lot with 2 coins. Comprising of 2 x AR 5 Drachmai 1876A, Paris mint, (KM46; Divo 50b; IV10; Dav. 117). Fine-Very fine. **1**



231 Greece. King George I, 1863-1913. Lepton, 1878K, second portrait, Bordeaux mint (KM52; Divo 70a). Sharp details with magnificent dark-chocolate patina and lustre on both sides. Traces of red on the reverse. Graded MS64BN NGC. **1**



232 Greece. King George I, 1863-1913. 2 Lepta, 1878K, Second Type, Bordeaux mint, large anchor variety (KM53; Divo 68; IV17). Excellent details, some corrosion on the obverse, otherwise a very appealing specimen. Graded UNC Details, Environmental Damage PCGS. **1**



233 Greece. King George I, 1863-1913. Lepton, 1879, second portrait, Paris mint (KM 52). Very strong details with red-brown colour. Graded MS62RB PCGS. **1**



234 Greece. King George I, 1863-1913. 2 Drachmai, 1883A, Paris mint (KM39; Divo 5 1b). Attractive grey patina with light toning on the periphery of the obverse. Graded VF3 5 NGC. **1**



235 Greece. King George I, 1863-1913. 5 Lepta, 1894A, Paris mint (KM58; Divo 64a). Sharp details with attractive grey silver patina and underlying lustre both on obverse and reverse. Graded MS63 PCGS. **1**



236 Greece. King George I, 1863-1913. 5 Lepta, 1895A, Paris mint (KM58; Divo 64b). Dark grey-silver toning with full details and underlying lustre on both sides. Graded MS6 2 NGC. **1**



237 Greece. King George I, 1863-1913. 1 Drachma, 1910, third type, Paris mint (KM 60; Divo 54a). Attractive silver toning, great surfaces, full details and lustre on both sides. Graded MS61 PCGS. **1**



238 Greece. King George I, 1863-1913. 10 Lepta, 1912, Paris mint (KM63; Divo 62). Superb details and surfaces accompanied with beautiful cartwheel lustre. Graded MS63 NGC. **1**



239 Greece. King George I, 1863-1913. 20 Lepta, 1912, Paris mint (KM64; Divo 58). Full details with attractive surfaces, lustrous on both sides of the coin. Graded MS62 PCGS. **1**



240 Greece. Lot with 10 silver coins comprising mainly of King George I, 1863-1913 : Drachma, 1873 (KM38), 2 Drachmai, 1873 (bent) (KM39), 20 Lepta, 1883 (holed) (KM4 4), Drachma, 1910 (KM60), Drachma, 1911 (KM60), 2 Drachmai, 1911 (2 pieces) (KM6 1), 10 Drachmai, 1930 (KM72), 20 Drachmai, 1930 (KM73), 30 Drachmai, 1963 (KM86). Mixed conditions, Fine to Extremely fine (10) **1**



241 Greece. King Constantine I, 1913-1917 & 1920-1922. 10 Lepta, 1922, Poissy mint, Thin Planchet (KM66; Divo 102). Sharp details with great surfaces and full lustre on both sides. Graded MS64 PCGS. **1**



242 Greece. Hellenic Republic, 1924-1935. 50 Lepta, 1926, Vienna mint (KM68; Divo 109a). Superb details with beautiful full cartwheel lustre and light toning on both sides. Great eye-appeal. Graded MS63 PCGS. **1**



243 Greece. First Republic, 1924-1935. 2 Drachmai, 1926, Vienna mint (KM70; Divo 107). Fully lustrous coin with very sharp details. Graded MS64 NGC. **1**



244 Greece. King Paul, 1947-1964. 5 Lepta, 1954, Bern mint (KM77; Divo 123). Superb details with marvelous lustre and mirror-like surfaces. A brilliant uncirculated example. Graded MS67 PCGS. **1**



245 Greece. King Paul, 1947-1964. 10 Lepta, 1954, Bern mint (KM78; Divo 122a). Magnificent high grade example with full lustre. Graded MS67 PCGS. **1**



246 Greece. King Paul, 1947-1964. 20 Lepta, 1954, Bern mint (KM79; Divo 121a). Magnificent high grade example with full lustre. Graded MS67 NGC. **1**



247 Greece. King Paul, 1947-1964. 50 Lepta, 1954, Paris mint (KM80; Divo 120a). Very sharp details and full lustre. Graded MS66 NGC. **1**



248 Greece. King Paul, 1947-1964. 5 Drachmai, 1954, Hollow Cheek, Paris mint (KM83; Divo 117). Exquisite details with cartwheel lustre on both sides. A brilliant uncirculated coin. Graded MS66 NGC. **1**



249 Greece. King Paul, 1947-1964. Drachma, 1957, Paris mint (KM81; Divo 119b). Sharp details with attractive light grey silver toning and full lustre. Graded MS64 PCGS. **1**



250 Greece. King Paul, 1947-1964. 50 Lepta, 1959, Bern mint (KM80; Divo 120c). Superb details with mesmerising surfaces and lustre. A captivating example of this scarce date in brilliant uncirculated conditions. Graded MS65 PCGS. **1**



251 Greece. King Paul, 1947-1964. 2 Drachmai, 1959, Bern mint (KM82; Divo 118c). Sharp details with great surfaces and lustre on both sides. Scarce date in higher grades. Graded MS62 PCGS. **1**



252 Greece. King Paul, 1947-1964. 20 Drachmai, 1960, Royal mint (KM85; Divo 115). Lustrous coin with superb details. Graded MS65 PCGS. **1**



253 Greece. King Paul, 1947-1964. 2 Drachmai, 1962, Paris mint (KM82; Divo 118d). Lustrous coin with very sharp details and attractive iridescent patina especially on the reverse. Graded MS66 PCGS. **1**



254 Greece. King Paul, 1947-1964. 50 Lepta, 1964, Bern mint (KM80; Divo 120e). Very sharp details and with full lustre. Graded MS67 NGC. **1**



255 Greece. King Constantine II, 1964-1973. 50 Drachmai, ND (1970), Kremnitz mint, 12.46g (KM93). Dull tone on obverse, much lustre on reverse, sharp details especially on reverse. Extremely fine. Struck to commemorate the April 21st 1967 Revolution. **1**



256 Greece. King Constantine II, 1964-1973. 100 Drachmai, ND (1970), Kremnitz mint, 25.00g (KM95). Very strong details with much lustre on obverse. About uncirculated. Struck to commemorate the April 21st 1967 Revolution. **1**



257 Greece. King Constantine II, 1964-1973. Lot with 4 coins comprising of: 10 Drachmai 1968 (KM96; Divo 125), 5 Drachmai 1970 (KM91; Divo 126), 50 Lepta 1970 (KM88; Divo 129) and King Paul, 50 Lepta 1962 (KM80; Divo 120d). Brilliant uncirculated (4). **1**



258 Greece. Third Republic, 1974-. AR Proof 100 Drachmai, 1978, 13.09g (KM121). Wonderful colourful patina, especially on the obverse, mirror-like fields, with the original box. **1**



259 Greece. Third Republic, 1974-. 500 Drachmai, 1979, 13.09g (KM122). Sharp details, dull tone on both sides. Extremely fine. Struck to commemorate the entrance of Greece to the European Common Market. **1**



260 Greece. Third Republic, 1974-. AR Proof Set 1981, Pan-European Games (KM125, 126, 127). With original box and certificates. Brilliant uncirculated. **1**



261 Greece. Third Republic, 1974-. Set 1981, Pan-European Games (KM125, 126, 127). With original box and certificates. Brilliant uncirculated. **1**



262 Greece. Third Republic, 1974-. Lot of 24 coins covering the 19th and 20th century; various medals, including 3 silver. Mixed conditions, Good to Uncirculated (24). **1**



263 Greece. Third Republic, 1974-. Lot with 2 sets: Private case with full set of 1971 issue (5 lepta to 20 Drachmai), (KM77, 78, 79, 97.1, 98, 99, 100, 101); 1978 Proof Set in original case (KM-PS2). About uncirculated-Uncirculated (2 sets) **1**



264 Greece. Third Republic, 1974-. 5 x Blisters, 2002, Euro official coin set, comprising 1,2,5,10,20 and 50 cents, 1 and 2 euro. First euro coin-set of Greece. Brilliant uncirculated (40). **1**



265 Greece. Third Republic, 1974-. 5 x Blisters, 2002,2003,2004,2008 and 2013, Euro official coin sets, comprising 1,2,5,10,20 and 50 cents, 1 and 2 euro. Brilliant uncirculated (40). **1**



266 Greece. Third Republic, 1974-. 10 Euro, 2003, Hellenic presidency of the EU. Proof in original box with CoA. **1**



267 Greece. Third Republic, 1974-. 20 Euro, 2003, 75 years of Bank of Greece. Proof in original box with CoA. **1**



268 Greece. Third Republic, 1974-. Lot with 2 coins; 2 x 10 Euro, 2007, Commemorating Mount Pindos National Park (Valia Kalnta and Black Pines). Proof in original box with CoA (2). **1**



269 Greece. Third Republic, 1974-. 9 x Blisters, 2014, 2015, 2016, 2017, 2018, 2019, 2020, 2021 and 2022, Euro official coin sets, comprising 1,2,5,10,20 and 50 cents, 1 and 2 euro. Each year package depicts a different geographic area of Greece. Brilliant uncirculated (72). **1**



270 Greece. Third Republic, 1974-. 9 x Coin Cards, 2 Euro, 2012, 2014 (2x), 2015(2x), 2016(2x) and 2020(2x), all different commemorative 2€ coins. Brilliant uncirculated (9). **1**



271 Greece, Crete. Prince George, 1898-1906. 2 Lepta, 1900A, Paris mint (KM2; Divo 137a). Red colour with abundance of lustre and minor black spots on the reverse. Uncirculated. **1**



272 Greece, Crete. Prince George, 1898-1906. 2 Lepta, 1900, Paris mint (KM2). Very strong details, cleaned. Graded UNC Details, Cleaned NGC. **1**



273 Greece, Crete. Prince George, 1898-1906. 5 Lepta, 1900A, Paris mint, 2.00g (KM 3; Divo 136). Very attractive details and patina. Extremely fine. **1**



274 Greece, Crete. Prince George, 1898-1906. 10 Lepta, 1900A, Paris mint, Medal Alignment variety, 2.94g (KM4.2; Divo -). A very scarce variety. Fine. **1**



275 Greece, Crete. Prince George, 1898-1906. 10 Lepta, 1900A, Paris mint, 3.00g (KM 4.1; Divo 135). Very attractive details and patina with some underlying lustre. Extremely fine. **1**



276 Greece, Crete. Prince George, 1898-1906. 20 Lepta, 1900A, Paris mint, 3.91g (KM 5; Divo 134). Very attractive details with uniform patina. Good very fine. **1**



277 Greece, Crete. Prince George, 1898-1906. Lepton, 1901A, Paris mint (KM1.2; Divo 138b). Brown patina and full details on both sides. Graded MS63BN NGC. **1**



278 Greece, Crete. Prince George, 1898-1906. Lepton, 1901, Paris mint (KM1). Full details with dark brown toning. Graded AU Details, Cleaned NGC. **1**



279 Greece, Crete. Prince George, 1898-1906. 2 Lepta, 1901 (KM2). Very strong details and dark brown patina. Graded AU Details, Cleaned NGC. **1**



280 Greece, Crete. Prince George, 1898-1906. Drachma, 1901, Paris mint, 5.00g (KM 7; Divo 132). Excellent details, attractive golden-silver patina and much underlying lustre. Good very fine. **1**



281 Greece, Crete. Prince George, 1898-1906. 2 Drachmai, 1901, Paris mint, 10.00g (KM8; Divo 131). Very attractive details with uniform wear. Very fine. **1**



282 Greece, Crete. Prince George, 1898-1906. 5 Drachmai, 1901, Paris mint, 24.82g (KM9; Divo 130; Dav. 118). Attractive silver patina, better details than usual on both sides. Good fine. **1**



283 Greece, Crete. Greece, Crete. Prince George, 1898-1906. Lot of 2 coins of 5 Drachmai 1901A, Paris mint (KM9; Divo 130). Good fine. One of them ex mount (2). **1**



284 Greece, Crete. Prince George, 1898-1906. Lot of 3 coins, comprising of Lepta 1900A (KM1.1; Divo 138a), 2 Lepta 1900A (KM2; Divo 137a) and 2 Lepta 1901A (KM2; Divo 137b). About uncirculated/Uncirculated (3). **1**



285 Greece, Ionian Islands, British Administration, 1809-1863. 2 Lepta, 1819, 4.76g (KM31). Strong details on both sides, peculiar coloring due to slight silver plating. About extremely fine. **1**



286 Greece, Ionian Islands, British Administration, 1809-1863. Obol, 1819, Coin Alignment, 8.83g (KM32). Uniform wear with a bump on the periphery of the obverse and brown patina. About very fine. **1**



287 Greece, Ionian Islands, British administration, 1809-1863. 2 Oboli, 1819 (KM33). Attractive details, dark-brown uneven patina with some green deposits on the reverse and the edge. Also some edge nicks, about very fine. **1**



288 Greece, Ionian Islands, British Administration, 1809-1863. 2 Lepta, 1820 (KM31). Chocolate-brown patina. Very fine. **1**



289 Greece, Ionian Islands, British Administration, 1809-1863. Lepton, 1834, variety with a full 4 (with both vertical and horizontal small bars) and dot after date, 1.85g (KM34). Sharp details with uniform brown chocolate patina and lustre. Good extremely fine. **1**



290 Greece, Ionian Islands, British Administration, 1809-1863. 30 Lepta, 1834, variety with no dot after date, 1.40g (KM35). Exceptional quality, sharp details and much lustre, some insignificant marks and a discoloration spot. About uncirculated. **1**



291 Greece, Ionian Islands, British Administration, 1809-1863. 30 Lepta, 1834, variety with only vertical bar on '4' and no dot after date, 1.34g (KM35). Attractive grey patina with excellent details. About very fine. **1**



292 Greece, Ionian Islands, British Administration, 1809-1863. Lepton, 1835, 1.87g (KM34). Blue/brown patina with strong details. Good extremely fine. **1**



293 Greece, Ionian Islands, British Administration, 1809-1863. Lepton, 1848, 1.89g (KM34). Dark brown patina with attractive details, some spots on reverse. Very fine. **1**



294 Greece, Ionian Islands, British Administration, 1809-1863. 30 Lepta, 1848, variety with "small" date, 1.37g (KM35). Grey silver patina with attractive details for this scarce date. Very fine. **1**



295 Greece, Ionian Islands, British Administration, 1809-1863. Lepton, 1849, variety with a full 4 (with both vertical and horizontal small bars) and dot away from the 9 (KM34). Strong details, chocolate brown patina. Graded AU55BN NGC. **1**



296 Greece, Ionian Islands, British Administration, 1809-1863. 30 Lepta, 1849, variety with no dot after date, 1.40 (KM35). Uniform wear, double struck. Very fine. **1**



297 Greece, Ionian Islands, British Administration, 1809-1863. Lepton, 1851, 1.85g (KM34). Blue/brown patina with sharp details. Good extremely fine. **1**



298 Greece, Ionian Islands, British Administration, 1809-1863. 30 Lepta, 1851, 1.42g (KM35). Excellent details with uniform wear and attractive tone. Extremely fine. **1**



299 Greece, Ionian Islands, British Administration, 1809-1863. 30 Lepta, 1851 (KM35). Grey silver toning with uniform wear on both sides. Graded VF35 NGC. **1**



300 Greece, Ionian Islands, British Administration, 1809-1863. 30 Lepta, 1852, variety with Arabic 1, 1.41g (KM35). Grey patina and uniform wear. Very fine. **1**



301 Greece, Ionian Islands, British Administration, 1809-1863. Lepton, 1853, Medal Alignment, variety with dot far away from the '3', 1.78g (KM34). Brown patina with attractive details. Good very fine. **1**



302 Greece, Ionian Islands, British Administration, 1809-1863. Lepton, 1857, medal alignment variety with no dot after date (KM34). Attractive details with uniform patina. Graded XF40BN NGC. **1**



303 Greece, Ionian Islands, British Administration, 1809-1863. 30 Lepta, 1857, 1.38g (KM35). Attractive uniform grey silver patina, a small scratch on reverse. The scarcer date of the 30 Lepta series. Very fine. **1**



304 Greece, Ionian Islands, British Administration, 1809-1863. Lepton, 1862, variety with extended date span (KM34). Exceptional details, superb brown patina with much red colour, scattered on both sides. Graded MS63BN NGC. **1**



305 Greece, Ionian Islands, British Administration, 1809-1863. Lot with 3 coins, comprising : Lepton, 1834, 1848, 1849 (KM34). Medium to heavy wear, the best preserved coin (aVF) is the scarcer type of the Lepton series (1848). Good to About very fine (3). **1**



306 Guernsey. Elizabeth II, 1952-. 25 Pence, 1978, Royal Visit, 28.28g (KM32a). Proof in box with CoA. **1**



307 Hungary. Maria Theresia, 1740-1780. Taler, 1742KB, Kremnitz mint, 28.74g (KM3 28.3; Dav. 1125B). Strong details with attractive toning, harshly cleaned, some lustre remaining. Very fine. **1**



308 Hungary. Maria Theresia, 1740-1780. Taler, 1744KB, Kremnitz mint, 28.70g (KM3 37.1; Dav. 1128). Lustrous example with strong details on both sides, especially on the reverse, many scratches on the obverse preventing it from a much better grade. Very fine. **1**



309 Hungary. Maria Theresia, 1740-1780. Taler, 1745KB, Kremnitz mint, 28.80g (KM3 37.1; Dav. 1128). Lustrous example with very sharp details on both sides, some scratches on the right side of field on the obverse. About extremely fine. **1**



310 Hungary. Maria Theresia, 1740-1780. Taler, 1763 KB, Kremnitz mint (KM378). Crisp details especially on the reverse, attractive patina with underlying lustre. An almost mint state Taler if it were not for a significant mark on the obverse. Extremely fine. **1**



311 Iraq. Feisal I, 1921-1933. 4 Fils, 1933 (KM97). Lustrous coin with full details. Graded AU55 PCGS. **1**



312 Italian States. Naples and Sicily, Ferdinand I Ferrante, 1458-1494. Cavallo, ND (1458-1494), 1.82g (Mir94). Attractive dark chocolate brown patina with very good details and some planchet flaws. Fine. **1**



313 Italian States. Naples and Sicily, Ferdinand IV, 1799-1805. 120 Grana, 1796, P//M, A-P, 27.60g (KM215, Dav. 1409). Excellent details on both sides, attractive silver toning and some insignificant adjustment marks on the reverse. Good Very fine to about Extremely fine. **1**



314 Italian States. Papal States, Alexander VIII, 1689-1691. Testone, 1690, 9.00g (KM524). Light grey silver patina, possibly cleaned in the past. Generally good details on both obverse and reverse. Very fine with hole. **1**



315 Italian States. Papal States, Benedict XIV, 1740-1758. Doppio Giulio (1/6 Scudo), 1756, 5.12g (KM974). Very good details with attractive light grey silver toning. Fine. **1**



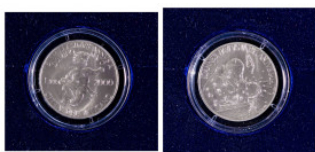
316 Italian States. Papal States, Clement XIII, 1758-1769. Grosso(= 5 Baiocchi), 1760, 1.17g (KM996). Attractive grey silver patina. Uneven wear on obverse whereas reverse has sharp details with attractive underlying lustre. Very fine. **1**



317 Italian States. Papal States, Gregory XVI, 1831-1846. Scudo, 1835B, 26.80g (KM1324). Beautiful portrait of the Pope with a lot of details and attractive patina. About extremely fine. **1**



318 Italian States. Papal States, Gregory XVI, 1831-1846. 1 Baiocco, 1841R (KM1320). Sharp details, with abundance of lustre and attractive chocolate-brown patina on both sides. Graded MS63BN NGC. **1**



319 Italian States. Vatican, John Paul II, 1978-2005. 2000 Lire, 2000 years from the birth of Christ, 16.00g (KM353). In its original box with CoA. Uncirculated. **1**



320 Italian States. Sardinia, Carlo Alberto, 1831-1849. 5 Lire, 1837, Mintmark Anchor (Genoa), 25.00g (KM113.3). Grey silver patina, attractive details both on obverse and reverse and some minor edge nicks. Very fine. **1**



321 Italian States. Sicily, Ferdinand III, 1759-1825. 12 Tari, 1796 MdOV, Eagle's coat of arms, 27.11g (C35a.4; Dav.1424). Attractive details for issue with traces of grey-golden toning on both sides and some minor adjustment marks. Very fine. **1**



322 Italian Eritrea. Umberto I, 1889-1900. 2 Lire, 1890R, Rome mint, 9.94g (KM3). Very attractive details and toning, light old cleaning. Good very fine. **1**



323 Italy. Vittorio Emanuele III, 1900-1946. 10 Lire, 1927R, 10.00g (KM68.1). Lustrous example with excellent details on both sides. Uncirculated. **1**



324 Japan. Meiji, 1867-1912. 20 Sen, 1907 Yr40 (Y30). Attractive cabinet grey patina and excellent details. Graded AU58 NGC. **1**



325 Japan. Hirohito (Showa), 1926-1989. Lot with 7 coins. Comprising 50 Sen, Yr38/1905, 13.47g (Y25), 1 Sen, Yr12/1937, 3.75g (Y47), 3 x 50 Sen, Yr12/1937, 4.91g (Y50), 2 x 1 Sen, Yr13/1938, 3.75g (Y55). Extremely fine to Brilliant uncirculated (7). **1**



326 Latin America, Mexico. Charles III, 1760-1788. 8 Reales, 1777, FM, Mintmark Mo, 26.79g (KM106.2). About very fine. **1**



327 Latin America, Mexico. Charles III, 1760-1788. 8 Reales, 1782, FF, Mintmark Mo, 26.90g (KM106.2). Grey-silver patina with full details. Very fine **1**



328 Latin America, Mexico. Charles III, 1760-1788. 8 Reales, 1784, FM, Mintmark Mo, 26.78g (KM106.2). Silver tone with some planchet flaws on both sides. About very fine.

1



329 Latin America, Mexico. Charles III, 1760-1788. 8 Reales, 1788, FM, Mintmark Mo, 26.33g (KM106.2a). Fine.

1



330 Latin America, Mexico. Charles III, 1760-1788. 8 Reales, 1788, FM, Mintmark Mo, 26.90g (KM106.2a). About very fine.

1



331 Latin America, Mexico. Charles IV, 1788-1808. 8 Reales, 1790, FM, Mintmark Mo, Obverse bust of Charles III, 26.59g (KM107). Fine.

1



332 Latin America, Mexico. Charles IV, 1788-1808. 8 Reales, 1791, FM, Mintmark Mo, 27.00g (KM109). Strong details with remaining traces of lustre. Very fine.

1



333 Latin America, Mexico. Charles IV, 1788-1808. 8 Reales, 1796, FM, Mintmark Mo, 26.53g (KM109). Grey patina on both sides with some minor scratches on the obverse. Very fine.

1



334 Latin America, Mexico. Charles IV, 1788-1808. 8 Reales, 1797, FM, Mintmark Mo, 27.07g (KM109). Weak strike with very attractive details and some remaining underlying lustre. Good very fine

1



335 Latin America, Mexico. Charles IV, 1788-1808. 8 Reales, 1799, FM, Mintmark Mo, 26.80g (KM109). Good fine.

1



336 Latin America, Mexico. Charles IV, 1788-1808. 8 Reales, 1802, FT, Mintmark Mo, 26.70g (KM109). Very fine. **1**



337 Latin America, Mexico. Charles IV, 1788-1808. 8 Reales, 1805, TH, Mintmark Mo, Wide date, 26.86g (KM109). Underlying lustre with some planchet problems on the edge and a small scratch on the obverse. Very fine **1**



338 Latin America, Mexico. Charles IV, 1788-1808. 8 Reales, 1806, TH, Mintmark Mo, 26.92g (KM109). Some planchet flaws on both sides. About very fine. **1**



339 Latin America, Mexico. Charles IV, 1788-1808. 8 Reales, 1808, TH, Mintmark Mo, 26.94g (KM109). Strong details, some planchet problems on the edge and plenty of lustre on the reverse. Almost extremely fine. **1**



340 Latin America, Mexico. Ferdinand VII, 1808-1821. 8 Reales, 1810, HJ, Mintmark Mo, 27.00g (KM110). Possibly cleaned on the obverse with some underlying lustre on the reverse. Good very fine. **1**



341 Latin America, Mexico. Ferdinand VII, 1808-1821. 8 Reales, 1819, JJ, Mintmark Mo, 27.00g (KM111). Underlying lustre with a few minor striking weaknesses. Very fine. **1**



342 Latin America, Mexico. Republic, 1823-. 8 Reales, 1825, DoRL, Mint Durango, 26.88g (KM377.4). Old cabinet patina with very attractive details. Good very fine. **1**



343 Latin America, Mexico. Republic, 1823-. 8 Reales, 1827, DoRL, Mint Durango, 27g (KM377.4). Grey-silver patina, very attractive details and fields slightly polished. Good very fine. **1**



344 Latin America, Mexico. United Mexican States, 1905-. 5 Pesos, 1948, Mo (KM465). A beautiful design with marvelous eye-appeal, light toning and exquisite underlying lustre. Graded MS65 NGC. **1**



345 Latin America, Mexico. Republic, 1823-. 25 Pesos, 1968Mo, Mexico City mint, Summer Olympics variety, Type I with Rings aligned, 22.50g (KM479.1). Dull silver patina and strong details, slightly cleaned. Good very fine. **1**



346 Montenegro. Nicholas I, 1860-1918. 2 Para, 1906 (KM2). Sharp details with attractive red-brown colour and lustre on both sides. Graded MS64RB NGC. **1**



347 Montenegro. Nicholas I, 1860-1918. Perper, 1909, 5.00g (KM5). Attractive details, good very fine. **1**



348 Montenegro. Nicholas I, 1860-1918. 2 Perpera, 1910, 10.00g (KM7). Good details with some black areas in the obverse and some gold-silver toning on the reverse. Extremely fine or better. **1**



349 Montenegro. Nicholas I, 1860-1918. Perper, 1914, 5.00g (KM14). Strong details, attractive grey-gold tone on obverse and uneven patina on the reverse. Good extremely fine. **1**



350 Netherlands. West Friesland. AV Ducat, 1598, 3.43g (KM8; Fr.291). Attractive golden tone with some weakness in strike and in flan. Almost very fine. **1**



351 Netherlands. Gelderland. Taler, 1663, Daalder "Leeuwendaalder", 27.12g (KM15.4). Old cabinet patina, very good details for issue and some planchet irregularities. Very fine. **1**



352 Netherlands. Holland. 1 Gulden, 1794, 10.43g (KM73). Old cabinet golden silver toning with excellent details on both sides. Good extremely fine. **1**



353 Palestine. British Mandate, 1920-1948. 2 Mils, 1945, Royal mint, 7.79g (KM2). Brown chocolate patina with some traces of red mint bloom on both sides and a tiny nick on the reverse's periphery. Almost uncirculated. **1**



354 Palestine. British Administration, 1917-1948. Lot with 3 coins : 2 Mils, 1941, London mint, 8.00g (KM2). Extremely fine; 10 Mils, 1942, London mint, 6.62g (KM4). Good extremely fine; 20 Mils, 1942, London mint, 11.36g (KM5). Extremely fine (3). **1**



355 Panama, Republic, 1903-. AR Proof "Simon Bolivar" 20 Balboas, 1974FM, Franklin mint (KM31). Mirror-like fields and wonderful cameo contrast. Graded PF67 Ultra Cameo NGC. **1**



356 Peru, Republic, 1826-. 8 Reales, 1840, Lima MB, 25.61g (KM142.3) Some strike weaknesses on the centre of both sides. Fine. **1**



357 Peru, Republic, 1826-. 5 Pesetas, 1882 LM, Ayacucho mint, 24.83g (KM201.3). Attractive grey patina, very good details for this scarce mint and some minor nicks on the periphery. Very fine. **1**



358 Portugal, Republic, 1910-. 50 Centavos, 1931 (KM577). Superb details and design with lustre and bright surfaces on both sides. Graded MS62 NGC. **1**



359 Portugal, Republic, 1910-. 10 Escudos, 1932, 12.54g (KM582). Excellent details, lightly cleaned with one small knock on the reverse periphery. Good extremely fine. **1**



360 Romania. Carol I, 1881-1914. 1 Leu, 1894, 5.00g (KM24). Sharp details in both sides. About Uncirculated **1**



361 Russia. Peter I, 1689-1725. Poltina, 1712, Novodel, 14.08g (N-E.2). Grey silver patina, exceptional details, reverse slightly off center and a lot of lustre. Almost uncirculated. **1**



362 Russia. Catherine II the Great, 1762-1796. 5 Kopecks, 1795EM, Ekaterinburg Mint, 48.82g (C59.3). Brown patina and even wear on obverse and reverse. Fine. **1**



363 Russia. USSR, 1918-1922. Rouble, 1924, Leningrad mint, 20.00g (KM-Y90.1). Attractive golden silver toning with some blue highlights and strong details. Good extremely fine. **1**



364 Russia. USSR. Set of 6 x 1 Ruble for the 1980 Moscow Olympics comprising of Kremlin, Olympics, Sputnik monument, Moscow University, Torch, Dalgorki Monument (Y144, Y153.1, Y164, Y165, Y177, Y178). In their original box. Brilliant uncirculated (6). **1**



365 Russia. USSR. Set of 6 x 1 Ruble for the 1980 Moscow Olympics comprising of Kremlin, Olympics, Sputnik monument, Moscow University, Torch, Dalgorki Monument (Y144, Y153.1, Y164, Y165, Y177, Y178). In their original box with a couple of minor scratches on box. Brilliant uncirculated (6). **1**



366 San Marino. Republic, 1864-. 10 Centesimi, 1935R, Smooth edge (KM13). Excellent surfaces with sharp details, attractive brown patina and a lot of remaining lustre on both sides. Graded MS66BN NGC. **1**



367 Scotland. Charles I, 1625-1649. 6 Shillings, ND (1637-1642), third coinage, Briot's issue, 2.80g (KM78). Grey silver patina, uniform wear. An interesting and scarce coin. Good fine. **1**



368 Serbia. Peter I, 1903-1918. 2 Dinara, 1904, 10.00g (KM26.1). Very attractive patina and strong details. Some underlying lustre. Extremely fine. **1**



369 Serbia. Peter I, 1903-1918. Dinar, 1915, coin alignment, without designer's name (KM25.4). Attractive light grey silver patina with extremely good details on both sides and some lustre, especially on the reverse. Graded AU58 PCGS. **1**



370 Serbia. German occupation, 1941-1944. Dinar, 1942, Budapest mint (KM31). Lustrous example with very strong details. Exceptional quality. Graded MS63 PCGS. **1**



371 Serbia. German occupation, 1941-1944. 10 Dinara, 1943, Budapest mint (KM33). Sharp details with some underlying lustre. Graded MS61 NGC. **1**



372 South Africa, Republic, 1852-1902. 2 1/2 Shillings, 1894, Pretoria mint, 14.09g (KM7). Multicolored patina and strong details, once lightly cleaned. Extremely fine. **1**



373 South Africa, Republic, 1852-1902. 2 Shillings, 1896, Pretoria mint, 11.27g (KM6). Grey-silver patina, very light wear on the obverse and attractive details. About extremely fine. **1**



374 South Africa, Republic, 1852-1902. 2 Shillings, 1897, Pretoria mint, 11.29g (KM6). Grey-silver patina with some gold toning and excellent details. Good extremely fine. **1**



375 South Africa, Republic, 1852-1902. Penny, 1898, Pretoria mint, 9.38g (KM2). Superb red-brown patina and sharp details. About uncirculated. **1**



376 Southern Rhodesia, George V, 1910-1936. Half Crown, 1934, 14.08g (KM5). Very attractive details, especially on the reverse, silver toning, a couple of minor scratches on the obverse and generally an eye-appealing coin for this key date. About extremely fine.

1



377 Spain, Alfonso XIII, 1886-1931. 5 Pesetas, 1891 PG-M, 25.00g (KM689). Very strong details, grey-silver patina with underlying lustre on both sides. A couple of marks on the obverse. Extremely fine.

1



378 Spain, Alfonso XIII, 1886-1931. 5 Pesetas, 1898 SG-V, 25.00g (KM707). Full lustre, a couple of bag marks on the obverse, excellent portrait and full details. Almost uncirculated.

1



379 Spain. Juan Carlos I, 1975-2014. Set of the Mundial 1982, comprising 25 cts, 1 pts, 5 pts, 25 pts, 50 pts and 100 pts of 1980 (KM MS11) in plastic small folder. Uncirculated (6).

1



380 Sweden. Oscar II, 1872-1907. 5 Öre, 1885, Smooth edge (KM736). Attractive dark brown patina with pleasant eye-appeal and superb surfaces on both sides. Graded MS6 2BN PCGS.

1



381 Switzerland. Grison Canton (Graubunden). 1/6 Batzen, 1820, 0.63g (KM5). Flan irregularity at 7 o'clock, otherwise extremely fine.

1



382 Switzerland. Confederation, 1848-. 5 Francs, 1874B, Bern mint (KM11). Light silver tone, some marks and polished, but decent details. Graded VF Details, Polished PCGS.

1



383 Switzerland. Lausanne. 5 Francs, 1876, Lausanne Shooting Festival, Bern mint (S 13; Dav. 387). Excellent details, impressive design, minor cleaning in the past and with much underlying lustre remaining. Graded AU Details, Cleaned PCGS.

1



384 Switzerland. Fribourg. 5 Francs, 1881, Fribourg Shooting Festival, Bern mint (S15; Dav. 389). Great details and attractive light old cabinet toning on both sides. Graded AU 53 PCGS. **1**



385 Switzerland. Lugano. 5 Francs, 1883, Lugano Shooting Festival, Bern mint (S16; Dav. 390). Very good details with light wear, beautiful old cabinet tone and some underlying lustre. Graded XF45 PCGS. **1**



386 Switzerland. Bern. 5 Francs, 1885, Bern Shooting Festival, Bern mint (S17; Dav. 391). Strong details with beautiful old grey cabinet tone and exquisite surfaces. Captivating toning on periphery of both sides. Graded AU58 PCGS. **1**



387 Switzerland. Bern. 5 Francs, 1892B, Bern mint (KM34; Divo/Tob 297). Good details with some scratches on the obverse and attractive surfaces on both sides. Graded XF 40 PCGS. **1**



388 Switzerland. Bern. 5 Francs, 1923B, Bern mint, large type (KM37; Divo/Tob 298). Full details with attractive light toning on both sides. Graded XF45 PCGS. **1**



389 Switzerland. Bern. 5 Francs, 1925B, Bern mint (KM38). Attractive silver tone, lightly cleaned and some underlying lustre. Graded UNC Details, Cleaned NGC. **1**



390 Tunisia. Ahmad Pasha Bay, AH1348-1361/1929-1942. 20 Francs, AH1353/1934, 20.00gr (KM256). Very attractive patina and excellent details for this scarce date. Very fine/Extremely fine. **1**



391 Turkey. Muhammad V, AH1327-1336/1909-1918. Lot with 2 coins. Comprising 1 Kuruş AH1327/1(1909)(KM748) and 2 Kuruş 1327/3(1911)(KM749). Uncirculated (2). **1**



392 USA. Dollar "Morgan Dollar", 1879, Philadelphia mint, 26.06g (KM110). Uniform wear on both sides and attractive silver patina. Good fine. **1**



393 USA. Dollar "Morgan Dollar", 1885, 26.65g (KM110). Strong details, but once possibly cleaned. Extremely fine. **1**



394 USA. Dollar "Morgan Dollar", 1887, Philadelphia mint, 26.73g (KM110). Frosty white surfaces with much lustre. Uncirculated. **1**



395 USA. Dollar "Morgan Dollar", 1889O, New Orleans mint, 25.88g (KM110). Silver patina and uniform wear, slightly cleaned. Fine. **1**



396 USA. Dollar "Morgan Dollar", 1890, 26.76g (KM110). Strong details, attractive patina and some underlying lustre. Minor bagmarks. Extremely fine. **1**



397 USA. Dollar "Morgan Dollar", 1890O, New Orleans mint, 26.42g (KM110). Attractive details, harshly cleaned. Very fine. **1**



398 USA. Dollar "Morgan Dollar", 1890O, New Orleans mint, 26.44g (KM110). Attractive grey patina, even wear on both sides and attractive details. Very fine. **1**



399 USA. Dollar "Morgan Dollar", 1890S, San Francisco mint, 26.78g (KM110). Grey silver patina and excellent details, light cleaned in the past. Good extremely fine. **1**



400 USA. Cent, 1897, Indian Head, Plain edge (KM90a). Superb details with abundance of lustre on both sides, marvellous surfaces and beautiful eye-appealing brownish colour. Graded MS64BN PCGS. **1**



401 USA. Dollar "Morgan Dollar", 1921, Philadelphia mint, 26.80g (KM110). Excellent details, lustrous reverse, slightly cleaned obverse with insignificant marks. About extremely fine. **1**



402 USA. Dollar "Morgan Dollar", 1921, 26.64g (KM110). Silver patina and strong details. Extremely fine. **1**



403 USA. Dollar "Peace Dollar", 1922, Philadelphia mint, 26.69g (KM150). Full lustre, excellent silver toning and sharp details. About uncirculated. **1**



404 USA. Dollar "Peace Dollar", 1922, Philadelphia mint, 26.73g (KM150). Attractive details, harshly cleaned. Very fine. **1**



405 USA. Dollar "Peace Dollar", 1922S, San Francisco mint, 26.57g (KM150). Uniform wear on both sides, attractive details on obverse and a nick on the reverse periphery. Good fine. **1**



406 USA. Dollar, "Peace Dollar", 1922S, San Francisco mint, 26.65g (KM150). Even wear on both sides and some small scratches. Good very fine. **1**



407 USA. Dollar, "Peace Dollar", 1923S, San Francisco mint, 26.65g (KM150). Attractive details, some lustre and a number of bumps in the periphery. Ex mount, Very fine. **1**



408 USA. Dollar, "Peace Dollar", 1924, 26.76g (KM150). Very strong details, attractive patina and lustre with some insignificant scratches on the obverse. Extremely fine. **1**



409 USA. Dollar "Peace Dollar", 1926S, San Francisco mint, 26.56g (KM150). Uniform wear on both sides. Good fine. **1**



410 Yugoslavia. Peter II, 1934-1945. Dinar, 1938, Paris mint (KM19). Fully lustrous coin with very sharp details. Graded MS66 PCGS. **1**



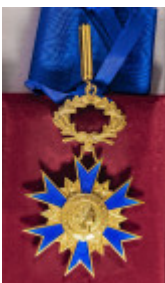
411 Lot of 15 silver coins of different countries (USA, Russia, Germany, France, Australia, Canada, Austria, Czechoslovakia), mixed conditions (Fine to Uncirculated). Weight (gross) over 100.00g. **1**



412 Belgium. Bronze medal, Saint Pierre de Malines, Pour l'industrie nationale, 1842, Braemt, 68mm. Attractive light bronze patina, very sharp details and impressive design both on obverse and reverse. Graded MS62 RB NGC. **1**



413 Belgium. Kingdom, Bronze Medal, Charles Rogier Ministre de l'Interieur, Promoteur de l'hygiene publique, 1852, by L. Wiener, 67mm (Wurzb. 7937). Chocolate patina and very strong details. Graded UNC Details - Cleaned NGC. **1**



414 France. National Order of Merit decoration, 1963, with ribbon. In its original box. Extensive wear on box. Almost uncirculated. **1**



415 Germany. Federal Republic, Knight Commander of the Order of Merit, by Steinhauer and Lück. In its original box. Extremely fine. **1**



416 Germany. Third Reich, Adolf Hitler, 1933-1945. AR Medal, 1933, Munich mint, 21.91g. Old cabinet tone, a small bump on the periphery and attractive details. Extremely fine. **1**



417 Great Britain. George IV, 1820-1830. British Historical Medal, George Canning, Premier, Death Medal in Brass, 1827, by T Q Ingram, 5.18g, 24mm. Good very fine. Ex London Coin Galleries LTD, Auction 4 Lot 1648. **1**



418 Great Britain. Brighton Relay Race, ND (1959), AE Matte, 45mm. Dark brown patina and sharp details. Graded SP65 PCGS. **1**



419 Greece. Medal of the International exhibition of Athens at Zappeion, 1903, Medal in bronze, 6.00g. Sharp details, some lustre on both sides. Exceptional quality for issue. Good extremely fine. **1**



420 Greece. Athens University 100th year Anniversary, 1937, Bronze plaquette, by Gysis, E:CORNUCOPIA, 99x71cm. Excellent design on both sides, light brown patina with very sharp details. Graded MS65 BN NGC. **1**



421 Greece. Order of the Phoenix, 1947-1974 (King Paul), Commander Cross, manufactured by EME Anagnostopoulos. Inside its official box. Some enamel flaws. Very fine. **1**



422 Greece. Medal commemorating the foundation of the New Apollonia (Thessaloniki) 1993, copper, obverse Xenios Zeus, 35mm, 11.83g. Very fine. **1**



423 Greece. Medal for the inauguration of the new building of the Hellenic Olympic Committee, 25th May 1999. From prime minister K. Simitis and president of the International Olympic Committee J. A. Samaranch. In the original box with CoA. Impressive medal, Uncirculated. **1**



424 Greece. Lot with 3 medals. Comprising 3 privately struck silver medals commemorating the Kings of modern Greece. Total weight 160.20g. Extremely fine (3). **1**



425 Italian States. Papal States, Jules III, 1550-1555. Bronze medal, 1553, 25.78g. Superb design of great artistic value, exquisite brown patina and eye-appealing surfaces. About uncirculated. **1**



426 Italian States. Papal States, Jules III, 1550-1555. Bronze medal, 1553, "KPATOY MAI", 24.21g. Sharp details with dark brown chocolate patina and superb surfaces accompanied by an extremely interesting reverse of great religious importance. About uncirculated. **1**



427 Italian States. Papal States, Jules III, 1550-1555. Bronze medal, 1554, St. Peter and St. Paul, 17.30g. Great design and details on both sides with dark brown patina and some wear. Extremely fine. **1**



428 Italian States. Papal States, Jules III, 1550-1555. Bronze medal, 1555, 19.14g. Sharp details, great surfaces, old cabinet blue/brown patina and underlying lustre both on obverse and reverse. About uncirculated. **1**



429 Italian States. Papal States, Jules III, 1550-1555. Bronze medal, 1555, 15.26g. Exquisite details and gorgeous design on both sides, with red-brown colour on the periphery and beautiful surfaces. About uncirculated. **1**



430 Italian States. Papal States, Jules III, 1550-1555. Bronze medal, ND, Reverse St. Peter, 6.94g. Superb details with exceptional old cabinet patina and remnants of lustre and mint red colour on the periphery. A scratch above head of St. Peter, otherwise about uncirculated. **1**



431 Italian States. Papal States, Jules III, 1550-1555. Bronze medal, ND, 15.31g. Fabulous design, with old cabinet brown patina, obverse Pope's portrait with purple-red colour. Lustrous on both sides and a truly beautiful reverse with the depiction of His majesty. Good extremely fine. **1**



432 Italian States. Papal States, Pius V, 1566-1572. Bronze medal, 1572, 9.40g. Superb portrait design, beautiful brown patina with a lot of lustre on both sides. About uncirculated. **1**



433 Italian States. Papal States, Gregory XIII, 1572-1585. Bronze medal, ND, 26.64g. Great portrait of Gregory XIII, attractive dark chocolate patina with underlying lustre and some light corrosion on the top of the Pope's portrait. Good very fine. **1**



434 Italian States. Papal States, Gregory XIII, 1572-1585. Bronze medal, ND, ROMA, 24.27g. Great design with a high relief depiction of the Pope and Saint Peter's church on the reverse. Beautiful blue/brown patina and great surfaces. Extremely fine. **1**



435 Italian States. Papal States, Sixtus V, 1585-1590. Bronze medal, 1589, 19.09g. Great portrait, exquisite dark brown patina and light wear on high points. Extremely fine. **1**



436 Italian States. Papal States, Innocent IX, 1591. Bronze medal, 1591, Reverse Pope's coat of arms, 12.31g. Very realistic portrait of the short-lived Pope. Superb details, mesmerising dark brown old cabinet patina and underlying lustre. Marvelous eye-appeal. Uncirculated. **1**



437 Italian States. Papal States, Paulus V, 1605-1621. Bronze medal, 1611, Completion of church, 12.87g. One of a kind combination of deep brown old cabinet patina and underlying lustre, creating a mesmerising eye-appeal. Highly detailed Paul's V portrait. Uncirculated. **1**



438 Italian States. Papal States, Paulus V, 1605-1621. Bronze medal, 1614, 22.60g. Beautiful portrait of Pope and light wear on high points of both sides. Extremely fine. **1**



439 Italian States. Papal States, Urban VIII, 1623-1644. Bronze medal, 1625, Jubilee Year, 21.40g. Extremely detailed design, light wear on both sides, dark brown patina with exquisite surfaces and underlying lustre. About uncirculated. **1**



440 Italian States. Papal States, Urban VIII, 1623-1644. Bronze medal, 1638, 15.20g. Highly detailed Pope's portrait with mesmerising city's depiction on reverse, beautiful old cabinet brown patina and some wear on high points of obverse. Underlying lustre on both sides. Extremely fine. **1**



441 Italian States. Papal States, Urban VIII, 1623-1644. Bronze medal, 1643, 34.69g. Great brown old cabinet patina with beautiful design. Holed on top, otherwise about extremely fine. **1**



442 Italian States. Papal States, Urban VIII, 1623-1644. Bronze medal, 1643, Oval shape, Mint error die break, 15.43g. Very artistic portrait of the Pope on the obverse and Virgin Mary with His infant on the reverse. Superb brown patina with traces of red-brown mint colour at the periphery of both sides. A truly unique medal. Uncirculated. **1**



443 Italian States. Papal States, Innocent X, 1644-1655. Bronze medal, 1647, 30.13g. Beautiful brown patina, exceptional portrait with full details and slight wear on high points. Extremely fine. **1**



444 Italian States. Papal States, Innocent X, 1644-1655. Bronze medal, 1654, 25.65g. Exquisite old cabinet patina with some remaining peripheral lustre and sharp details on both sides. Light wear on high points. Extremely fine. **1**



445 Italian States. Papal States, Innocent X, 1644-1655. Bronze medal, 1655, 34.50g. Gorgeous engraving design both on obverse with Pope's portrait and on reverse with depiction of Holy Spirit. Mesmerising dark brown old cabinet patina with exquisite underlying lustre and some wear on high points of this high relief medal. Good extremely fine. **1**



446 Italian States. Papal States, Innocent X, 1644-1655. Alexander VII, 1655-1667. Bronze medal, 1659, 18.64g. Attractive details with dark brown patina and great surfaces. Good very fine. **1**



447 Italian States. Papal States, Innocent X, 1644-1655. Alexander VII, 1655-1667. Bronze medal, 1665, 31.41g. Impressive design, with old cabinet brown patina and very good details on both side. Good very fine. **1**



448 Italian States. Papal States, Clement X, 1670-1676. Bronze medal, 1670, 15.00g. Exceptional portrait with attractive peripheral toning, old dark brown cabinet patina and reverse of great religious value. Good extremely fine. **1**



449 Italian States. Papal States, Clement X, 1670-1676. Bronze medal, 1672, 28.61g. Great Pope's portrait with brown patina and some wear on high points. Extremely fine. **1**



450 Italian States. Papal States, Alexander VIII, 1689-1691. Bronze medal, 1689, SVA VITATE, 18.82g. Marvelous design on both sides with dark brown old cabinet patina and superb surfaces. Extremely fine. **1**



451 Italian States. Papal States, Benedict XIV, 1740-1758. Bronze medal, 1743, 22.69g. Very good details, attractive dark brown patina and great surfaces with some wear on high points. Extremely fine. **1**



452 Italian States. Papal States, Pius VI, 1775-1799. Bronze medal, 1796, 19.76g. Exceptional portrait of Pope Pius VI, with old cabinet dark brown patina and some wear on both sides. Good very fine. **1**



453 Italian States. Papal States, Pius X, 1903-1922. Bronze medal, 1907 35.00g. Marvellous design, high relief, attractive patina with light blue/brown toning. Magnificent quality. Uncirculated. **1**



454 Italian States. Papal States, Sede Vacante. Bronze medal, 1939, 24.73g. Excellent design with sharp details and attractive chocolate-brown patina. About uncirculated. **1**



455 Italy. Republic, Knights Cross of the Order of Merit, most probably awardee to a lady. Manufactured by Arturo Pozzi. In its original box. Some dirt on the obverse enameled. Good very fine. **1**



456 Romania. King Carol II, 1930-1940. Plaquette-medal of white metal/bronze for the International Equestrian Competition, June 1938, Bucharest, dimensions 80x50mm. In its original box. Almost uncirculated. **1**



457 Romania. Plaquette in bronze, depicting King Carol II on his horse, embedded on a piece of marble for the International Equestrian Competition, June 1938 Bucharest, dimensions 72x50mm. In its original box. Almost uncirculated. **1**



458 Russia. Nicholas II, 1894-1917. Medal 1913, in bronze, for the 300th Anniversary of the Romanov's Dynasty, 28mm, 13.14g (Diakov 1548.3). Sharp details and much lustre. About uncirculated. **1**



501 Argentina Banco Central 5 Pesos, No Date (1974-1976) S/N 41.060.195B Printer CMN Wmk. Arms Pick 294 Graded Gem Uncirculated 65 EPQ PMG **1**



502 Argentina Banco Central 10 Pesos, No Date (1983-1984) S/N 74.364.968A Printer CdM Wmk. Multiple Sunbursts Pick 313a Graded Gem Uncirculated 65 EPQ PMG **1**



503 Argentina Banco Central 50 Pesos, No Date (1983-1984) S/N 33.832.673A Printer CdM Wmk. Multiple Sunbursts Pick 314a Graded Gem Uncirculated 65 EPQ PMG **1**



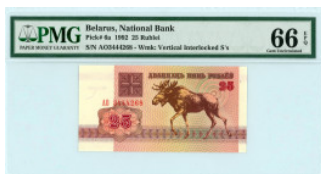
504 Azerbaijan Milli Banki 5 Manat, 1993 S/N A/1 04777878 Wmk. Flames Pick 15 Graded Gem Uncirculated 66 EPQ PMG **1**



505 Bangladesh Peoples Republic 2 Taka, 2010 S/N 5754898 Wmk. Tiger's Head Pick 6Cn Graded Gem Uncirculated 66 EPQ PMG **1**



506 Belarus National Bank 10 Rubles, 1992 S/N AL1175113 Wmk. Interlocked S's Pick k 5 Graded Superb Gem Uncirculated 67 EPQ PMG **1**



507 Belarus National Bank 25 Rubles, 1992 S/N AO3444268 Wmk. Interlocked S's Pick 6a Graded Gem Uncirculated 66 EPQ PMG **1**



508 Belarus National Bank 50 Rubles, 1992 S/N AV4509798 Wmk. Interlocked S's Pick 7 Graded Gem Uncirculated 65 EPQ PMG **1**



509 Belarus National Bank 1000 Rubles, 1992 (ND 1993) S/N AZ8190613 Wmk. Interlocked S's Pick 11 Graded Gem Uncirculated 65 EPQ PMG **1**



510 Belarus National Bank 5000 Rubles, 1998 S/N RG7749194 Wmk. Interlocked S's Pick 17 Graded Superb Gem Uncirculated 67 EPQ PMG **1**



511 Belarus National Bank 500 Rubles, 2000 (ND 2011) S/N BKH7320876 Segmented Security Thread Wmk. Palace Pick 27b Graded Superb Gem Uncirculated 67 EPQ PMG **1**



512 Bolivia Banco Central 10 Bolivianos, 1986 (ND 2005) S/N 48789481G Wmk. C.G. de Rojas Pick 228 Graded Gem Uncirculated 65 EPQ PMG **1**



513 Bosnia-Herzegovina National Bank 500 Dinara, 1992 S/N AB21092219 Wmk. Repeated Diamonds Pick 14a Graded Superb Gem Uncirculated 67 EPQ PMG **1**



514 Bosnia-Herzegovina National Bank 10 Dinara, 1992 S/N AA5456926 Wmk. Young Girl Pick 133a Graded Gem Uncirculated 65 EPQ PMG **1**



515 Bosnia-Herzegovina National Bank 1000 Dinara, 1992 S/N AA7358087 Wmk. Young Boy Pick 137a Graded Gem Uncirculated 65 EPQ PMG **1**



516 Brazil Banco Central 100 Cruzados Novos, No Date (1989) S/N A5525050401A Wmk. Liberty Head-Sign #26 Pick 220a Graded Gem Uncirculated 65 EPQ PMG **1**



517 Brazil Banco Central 500 Cruzados Novos, No Date (1990) S/N A3592040724A Wmk. Liberty Head-Sign #27 Pick 222 Graded Gem Uncirculated 66 EPQ PMG **1**



518 Brazil Banco Central 2 Reais, 2010 S/N AA012017106 Sign.G. Mantega- A.A. Tombrini Pick 252a Graded Gem Uncirculated 65 EPQ PMG **1**



519 Bulgaria Kingdom of Bulgaria Lot comprising of 3: 500 Leva, 1943 S/N A-077553, -54, -55 (3 consecutive numbers) REICHSDRUCKEREI BERLIN Pick 66; Pitidis 397 Very fine-Extremely fine, some rust on reverse of -54, -55. Used in Northern Greece during the Bulgarian occupation 1941-1944. **1**



520 Gambia Central Bank 10 Dalasis, No Date (1991-1995) S/N A7088194 Wmk. Crocodile's Head - Sign.#11 Pick 13b Graded Gem Uncirculated 66 EPQ PMG **1**



521 Germany Rentenbank 1 Rentenmark, 1937 S/N R.20399679 Pick 173b Graded C hoice Uncirculated 64 OPQ PCGS Gold Shield **1**



522 Germany Rentenbank 2 Rentenmark, 1937 S/N D.02762849 Pick 174b Graded U ncirculated 62 PCGS Gold Shield **1**



523 Germany Reich's Credit Treasury Note 1 Reichsmark, No Date 1940-1945) S/N 95.857402 Pick R136a Graded Choice Uncirculated 64 OPQ PCGS Gold Shield **1**



524 Germany Reich's Credit Treasury Note 2 Reichsmarks, No Date (1940-1945) S/N J.4351110 Pick R137a Graded Choice Uncirculated 64 OPQ PCGS Gold Shield **1**



525 Germany Reich's Credit Treasury Note 5 Reichsmarks, No Date (1940-1945) S/N S.0706930 Pick R138a Graded Gem Uncirculated 65 OPQ PCGS Gold Shield **1**



526 Germany Reich's Credit Treasury Note 20 Reichsmarks, No Date (1940-1945) S/N L.8321630 Pick R139 Graded Gem Uncirculated 65 OPQ PCGS Gold Shield **1**



527 Germany Reich's Credit Treasury Note 50 Reichsmarks, No Date (1940-1945) S/N B.2232755 Pick R140 Graded Uncirculated 62 PCGS Gold Shield **1**



528 Germany, Federal Republic 100 Mark, 1970 S/N NF 3768469 Wmk. S.Munster Pick 34a Graded Choice Very Fine 35 PCGS Gold Shield **1**



529 Great Britain Bank of England 10 Shillings, No Date (1955-1960) S/N S47Y 05342 2 Wmk. Head of Minerva Sign.L.K.O'Brien Pick 368c Graded About Uncirculated 53 OP Q PCGS Gold Shield **1**



530 Great Britain Bank of England 1 Pound, No Date (1955-1960) S/N D45L 067111 Wmk. Head of Minerva Pick 369c Graded Extremely Fine 45 PPQ PCGS CURRENCY1



531 Great Britain Bank of England 5 Pounds, No date (1961-1963) S/N K08 275373 Wmk. Helmeted head of Britannia Pick 372a Graded Choice About Uncirculated 58 PCGS Gold Shield **1**



532 Great Britain Bank of England 10 Shillings, No Date (1966-1970) S/N B94N 20673 4 Pick 373c Graded Very Choice New 64 PPQ PCGS CURRENCY **1**



533 Great Britain Bank of England 1 Pound, No Date (1962-1966) S/N A75X 273032 P ick 374c Graded Choice Uncirculated 63 OPQ PCGS Gold Shield **1**



534 Great Britain Bank of England 5 Pounds, No Date (1962-1966) S/N L36 414271 Wmk. Laureate Heads Pick 375a Graded About Uncirculated 55 PMG **1**



535 Great Britain Bank of England 10 Pounds, No Date (1964-1966) S/N A31 167117 Wmk. Queen Elizabeth II Pick 376a Graded About Uncirculated 53 PMG **1**



536 Great Britain British Armed Forces 5 New Pence, No Date (1972) Sixth Series - Special Voucher Pick M44a Graded Gem Uncirculated 65 EPQ PMG **1**



537 Greece National Bank of Greece (ΕΘΝΙΚΗ ΤΡΑΠΕΖΑ ΤΗΣ ΕΛΛΑΔΟΣ) 25 Drachmai, 15th July 1917 S/N ΣΒ 610102 Printer.ABNC Zaimis Sign. Pick 52; Pitidis 51 Very fine. **1**



538 Greece National Bank of Greece (ΕΘΝΙΚΗ ΤΡΑΠΕΖΑ ΤΗΣ ΕΛΛΑΔΟΣ) 100 Drachmai, 14th June 1927 S/N ΟΓ051931678 Printer ABNC Pick 91; Pitidis 87 Graded Choice Extremely Fine 45 EPQ PMG **1**



539 Greece Kindom of Greece (ΒΑΣΙΛΕΙΟΝ ΤΗΣ ΕΛΛΑΔΟΣ) 1 Drachma, 27th October 1917 S/N A/15 71471 Printer.Aspiotis Bros, Corfu Pick 304b; Pitidis 266a Graded Choice Uncirculated 63 EPQ PMG **1**



540 Greece Kindom of Greece (ΒΑΣΙΛΕΙΟΝ ΤΗΣ ΕΛΛΑΔΟΣ) 2 Drachmai, 27th October 1917 S/N A/17 05734 Printer. Aspiotis Bros, Corfu Pick 306; Pitidis 267a Graded Choice About Uncirculated 58 PCGS Gold Shield **1**



541 Greece Kindom of Greece (ΒΑΣΙΛΕΙΟΝ ΤΗΣ ΕΛΛΑΔΟΣ) 10 Drachmai, 6th April 1948 S/N B12 413391 Printer. G&D Pick 314; Pitidis 314 Graded Gem Uncirculated 65 PPQ PCGS BANKNOTE **1**



542 Greece Kindom of Greece (ΒΑΣΙΛΕΙΟΝ ΤΗΣ ΕΛΛΑΔΟΣ) 100 Drachmai, 1st November 1953 S/N α.10 674331 Pick 324b; Pitidis 327 Uncirculated **1**



543 Greece Kindom of Greece (ΒΑΣΙΛΕΙΟΝ ΤΗΣ ΕΛΛΑΔΟΣ) 500 Drachmai, 1st November 1953 S/N α.10 745237 Pick 325b; Pitidis 328 Uncirculated **1**



544 Greece Kindom of Greece (ΒΑΣΙΛΕΙΟΝ ΤΗΣ ΕΛΛΑΔΟΣ) 1000 Drachmai, 1st November 1953 S/N αβ.02 532572 Pick 326b; Pitidis 329 Uncirculated **1**



545 Greece Bank of Greece (ΤΡΑΠΕΖΑ ΤΗΣ ΕΛΛΑΔΟΣ) 1000 Drachmai, 15th October 1926 (old date) S/N ΚΣ059 058387 Red ovpt "ΤΡΑΠΕΖΑ ΤΗΣ ΕΛΛΑΔΟΣ" Pick 100a; Pitidis 99 Graded Very Fine 25 PCGS CURRENCY, Minor Restorations **1**



546 Greece Bank of Greece (ΤΡΑΠΕΖΑ ΤΗΣ ΕΛΛΑΔΟΣ) 500 Drachmai, 1st October 1932 S/N BK070 766787 Printer ABNC Pick 102a; Pitidis 102 Graded Uncirculated 62 O PQ PCGS Gold Shield **1**



547 Greece Bank of Greece (ΤΡΑΠΕΖΑ ΤΗΣ ΕΛΛΑΔΟΣ) 50 Drachmai, 1st September 1935 S/N ΑΘ=024 620500 Printer BDF Pick 104a; Pitidis 103 Graded Choice About Uncirculated 58 PPQ PCGS CURRENCY **1**



548 Greece Bank of Greece (ΤΡΑΠΕΖΑ ΤΗΣ ΕΛΛΑΔΟΣ) 100 Drachmai, 1st September 1935 S/N ΑΣ=023 742807 Printer BDF Pick 105a; Pitidis 104 Graded Uncirculated 62 Details (Pinholes) PCGS Gold Shield **1**



549 Greece Bank of Greece (ΤΡΑΠΕΖΑ ΤΗΣ ΕΛΛΑΔΟΣ) 1000 Drachmai, 1st May 1935 S/N AI=011 499919 Printer BDF Pick 106a; Pitidis 105 Graded Choice About Uncirculated 58 PCGS BANKNOTE **1**



550 Greece Bank of Greece (ΤΡΑΠΕΖΑ ΤΗΣ ΕΛΛΑΔΟΣ) 50 Drachmai, 1st January 1939 S/N Λ.046 458486 Printer.TDLR Pick 107a; Pitidis 106 Graded Suberb Gem Uncirculated 67 OPQ PCGS Gold Shield **1**



551 Greece Bank of Greece (ΤΡΑΠΕΖΑ ΤΗΣ ΕΛΛΑΔΟΣ) 100 Drachmai, 1st January 1939 S/N Π-042 801395 Printer Waterlow & Sons Pick 108a; Pitidis 107 Graded Choise About New 58 PCGS CURRENCY, Rust Stain and Minor Damage in Right Margin **1**



552 Greece Bank of Greece (ΤΡΑΠΕΖΑ ΤΗΣ ΕΛΛΑΔΟΣ) 1000 Drachmai, 1st January 1939 S/N A-087 199847 Printer. BWC Pick 110a; Pitidis 109 Graded Choice About Uncirculated 58 OPQ PCGS GOLD SHIELD **1**



553 Greece Bank of Greece (ΤΡΑΠΕΖΑ ΤΗΣ ΕΛΛΑΔΟΣ) 1000 Drachmai, 1st January 1939 S/N N-074 678798 Printer. Waterlow & Sons Pick 111a; Pitidis 110 Graded About Uncirculated 55 OPQ PCGS GOLD SHIELD **1**



554 Greece Bank of Greece (ΤΡΑΠΕΖΑ ΤΗΣ ΕΛΛΑΔΟΣ) 1000 Drachmai, 1st October 1941 S/N ΠΩ 491076 Printer. Athens Pick 117b; Pitidis 117c Graded Choice Uncirculated 64 OPQ PCGS Gold Shield **1**



555 Greece Bank of Greece (ΤΡΑΠΕΖΑ ΤΗΣ ΕΛΛΑΔΟΣ) 1000 Drachmai, 21st August 1942 S/N ΠΙ 171761 ΠΙ Printer. Athens Pick 118; Pitidis 119c Graded Gem Uncirculated 66 EPQ PMG **1**



556 Greece Bank of Greece (ΤΡΑΠΕΖΑ ΤΗΣ ΕΛΛΑΔΟΣ) 25.000 Drachmai, 12 August 1943 S/N BT 276134 Printer.Athens Pick 123a; Pitidis 123 Graded Choice New 63 PPQ PCGS CURRENCY **1**



557 Greece Bank of Greece (ΤΡΑΠΕΖΑ ΤΗΣ ΕΛΛΑΔΟΣ) 2.000.000.000 Drachmai, 11 October 1944 S/N KZ 205697 Printer.Athens Pick 133a; Pitidis 133 Graded Choice New 63 PCGS CURRENCY **1**



558 Greece Bank of Greece (ΤΡΑΠΕΖΑ ΤΗΣ ΕΛΛΑΔΟΣ) 10.000.000.000 Drachmai, 2 0th October 1944 S/N KE200697 with prefix letters Obstracted printing error Pick 143a; Pitidis 134 Graded Very Fine 30, Obstracted Printing Error PMG Very interesting printin g error. **1**



559 Greece Bank of Greece (ΤΡΑΠΕΖΑ ΤΗΣ ΕΛΛΑΔΟΣ) 100.000.000.000 Drachmai, 3rd November 1944 S/N 564922 AA Printer.Athens Pick 135a; Pitidis 135d Graded Choi ce Uncirculated 63 PCGS Gold Shield **1**



560 Greece Bank of Greece (ΤΡΑΠΕΖΑ ΤΗΣ ΕΛΛΑΔΟΣ) 50 Drachmai, 1st January 19 41, No Date (1945) S/N β.K-108 299746 Printer TDLR Pick 168; Pitidis 151 Graded Ch oice Uncirculated 64 EPQ PMG **1**



561 Greece Bank of Greece (ΤΡΑΠΕΖΑ ΤΗΣ ΕΛΛΑΔΟΣ) 50 Drachmai, 9th November 1944 S/N BM 378992 Printer.Athens Pick 169a; Pitidis 150 Graded Choice New 63 PC GS CURRENCY **1**



562 Greece Bank of Greece (ΤΡΑΠΕΖΑ ΤΗΣ ΕΛΛΑΔΟΣ) 100 Drachmai, No Date (194 4) S/N θ.K-149 171366 Printer.W & S Pick 170a; Pitidis 152 Graded Choice Uncirculate d 63 PCGS Gold Shield **1**



563 Greece Bank of Greece (ΤΡΑΠΕΖΑ ΤΗΣ ΕΛΛΑΔΟΣ) 500 Drachmai, No Date (1945) S/N κ.Ξ-105 773911 Printer.BWC Pick 171a; Pitidis 153 Graded Choice Uncirculated 64 PMG **1**



564 Greece Bank of Greece (ΤΡΑΠΕΖΑ ΤΗΣ ΕΛΛΑΔΟΣ) 10.000 Drachmai , No Date (1945) S/N A.02-656606 Printer Bradbury Wilkinson & Co. Pick 174a; Pitidis 156 Grade d Very Fine 25 PMG **1**



565 Greece Bank of Greece (ΤΡΑΠΕΖΑ ΤΗΣ ΕΛΛΑΔΟΣ) 10.000 Drachmai , No Date (1946) S/N Γ.18-028335 Printer Bradbury Wilkinson & Co. Pick 175a; Pitidis 157 Grade d Very Fine 20 PMG **1**



566 Greece Bank of Greece (ΤΡΑΠΕΖΑ ΤΗΣ ΕΛΛΑΔΟΣ) 20.000 Drachmai , No Date (1946) S/N K.09-159531 Printer Bradbury Wilkinson & Co. Pick 176a; Pitidis 158 Grade d Very Fine 20 PMG **1**



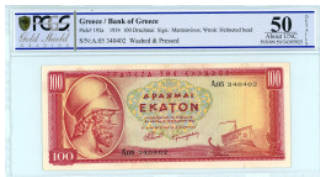
567 Greece Bank of Greece (ΤΡΑΠΕΖΑ ΤΗΣ ΕΛΛΑΔΟΣ) 1.000 Drachmai, 14th November 1947 S/N EM-4 742846 Pick 180b, Pitidis 164 Graded Choice About Uncirculated 58 PCGS Gold Shield **1**



568 Greece Bank of Greece (ΤΡΑΠΕΖΑ ΤΗΣ ΕΛΛΑΔΟΣ) 10.000 Drachmai, 29th December 1947 S/N ΔΙ 266222 Small format Printer Bradbury Wilkinson & Co. Pick 182a; Pitidis 165 Graded Choice Extremely Fine 45 PCGS Gold Shield **1**



569 Greece Bank of Greece (ΤΡΑΠΕΖΑ ΤΗΣ ΕΛΛΑΔΟΣ) 20.000 Drachmai, No Date (1947) S/N T.33-168975 Printer.BWC With Sec.Strip Pick 179b; Pitidis 161 Graded About Uncirculated 55 EPQ PMG **1**



570 Greece Bank of Greece (ΤΡΑΠΕΖΑ ΤΗΣ ΕΛΛΑΔΟΣ) 100 Drachmai, 31st March 1954 S/N A.05 340402 Printer De la Rue LTD Pick 192a; Pitidis 174 Graded About Uncirculated 50 Details, washed and pressed PCGS Gold Shield **1**



571 Greece Bank of Greece (ΤΡΑΠΕΖΑ ΤΗΣ ΕΛΛΑΔΟΣ) 10 Drachmai, 1st March 1955 S/N γ.10 457906 Printer.Bank of Greece Pick 189b; Pitidis 175 Graded About Uncirculated 55 PMG, Pinholes **1**



572 Greece Bank of Greece (ΤΡΑΠΕΖΑ ΤΗΣ ΕΛΛΑΔΟΣ) 20 Drachmai, 1st July 1955 S/N Z.01 530934 Pick 190a; Pitidis 178 Graded About Uncirculated 55 EPQ PMG **1**



573 Greece Bank of Greece (ΤΡΑΠΕΖΑ ΤΗΣ ΕΛΛΑΔΟΣ) 50 Drachmai, 1st March 1955 S/N ε1. 135413 Printer.Bank of Greece Pick 191a; Pitidis 177 Graded Choice About Uncirculated 58 EPQ PMG **1**



574 Greece Bank of Greece (ΤΡΑΠΕΖΑ ΤΗΣ ΕΛΛΑΔΟΣ) 100 Drachmai, 1st July 1955 S/N Z.03 087130 Pick 192b; Pitidis 178 Graded Choice About Uncirculated 58 PCGS B ANKNOTE **1**



575 Greece Bank of Greece (ΤΡΑΠΕΖΑ ΤΗΣ ΕΛΛΑΔΟΣ) 1.000 Drachmai, 16th April 1956 S/N H.05 570027 Pick 194a; Pitidis 180 Graded About Uncirculated 55 EPQ PMG **1**



576 Greece Bank of Greece (ΤΡΑΠΕΖΑ ΤΗΣ ΕΛΛΑΔΟΣ) 500 Drachmai, 1968 S/N 09 M 382124 Printer Bank of Greece Pick 197a; Pitidis 184 Graded Gem Uncirculated 65 OPQ PCGS Gold Shield **1**



577 Greece Bank of Greece (ΤΡΑΠΕΖΑ ΤΗΣ ΕΛΛΑΔΟΣ) 1.000 Drachmai, 1970 S/N 63X 792174 Printer Bank of Greece Pick 198b; Pitidis 185 Graded Gem Uncirculated 66 EPQ PMG **1**



578 Greece Bank of Greece (ΤΡΑΠΕΖΑ ΤΗΣ ΕΛΛΑΔΟΣ) 5.000 Drachmai, 1984 S/N 38Ξ 936163 Printer Bank of Greece Pick 203a; Pitidis 190 Graded Gem Uncirculated 66 OPQ PCGS Gold Shield **1**



579 Greece Bank of Greece (ΤΡΑΠΕΖΑ ΤΗΣ ΕΛΛΑΔΟΣ) 5.000 Drachmai, 1997 S/N 0411 435551 Printer Bank of Greece Pick 205a; Pitidis 194 Graded Gem Uncirculated 66 OPQ PCGS Gold Shield **1**



580 Greece Cassa Mediterranea 50 Drachmai, No Date (1941) S/N 0001 580055 Printer Italy Pick M3; Pitidis 339 Graded Choice About New 58 PPQ PCGS CURRENCY **1**



581 Greece Cassa Mediterranea 100 Drachmai, No Date (1941) S/N 0002 192758 Printer Italy Pick M4; Pitidis 340 Graded About Uncirculated 50 Details (Stains) PCGS Gold Shield **1**



582 Greece Cassa Mediterranea 1.000 Drachmai, No Date (1941) S/N 0001 416841 Printer Italy Pick M6; Pitidis 342 Graded Extremely Fine 40 EPQ PMG **1**



583 Greece Ionian Islands 5 Drachmai, No Date (1941) S/N 003 458246 Printer Italy Pick M12; Pitidis 347 Graded Gem Uncirculated 65 PPQ PCGS CURRENCY **1**



584 Greece Ionian Islands 10 Drachmai, No Date (1941) S/N 001 643245 Printer Italy Pick M13; Pitidis 348 Graded Choice About Uncirculated 58 OPQ PCGS Gold Shield 1



585 Greece Ionian Islands 500 Drachmai, No Date (1941) S/N 0001 619757 Printer Italy Pick M16a; Pitidis 351 Graded About Uncirculated 53 OPQ PCGS Gold Shield 1



586 Greece Ionian Islands 1.000 Drachmai, No Date (1941) S/N 0003 010544 Printer Italy Pick M17a; Pitidis 352 Graded Choice Uncirculated 64 PCGS Gold Shield 1



587 Bank of Crete 25 Drachmai, 26th September 1915 S/N A005-252,607 Printer Bradbury Wilkinson & Co. Pick S153; Pitidis 251b Graded Very Fine 20 Details, Reparation PCGS Gold Shield 1



588 Greece Local Issues Corfu, 100.000.000 Drachmai, 17th October 1944 S/N 06087 1 Pick 156; Pitidis 430b Graded Choice Very Fine 35 PMG 1



589 Greece Local Issues Patra, 100.000.000 Drachmai, 7th October 1944 S/N 097443 Pick 164; Pitidis 422 Graded About Uncirculated 55 PMG 1



590 Greece Local Issues Patra, 500.000.000 Drachmai, 7th October 1944 S/N 004066 Pick 165; Pitidis 423 Graded Extremely Fine 40 PMG 1



591 Greece British Military Authority 1 Shilling, No Date (1943) S/N K Series Pick M2; Pitidis 435 Graded Choice About Uncirculated 58 OPQ PCGS Gold Shield **1**



592 Greece British Military Authority 2 Shilling and 6 Pence, No Date (1943) S/N R Series Pick M3; Pitidis 436 Graded About Uncirculated 55 OPQ PCGS Gold Shield **1**



593 Greece British Military Authority 5 Shilling, No Date (1943) S/N K Series Pick M4; Pitidis 437 Graded About Uncirculated 55 PCGS Gold Shield **1**



594 Guyana Bank of Guyana 100 Dollars, No date (1999) S/N A/86 163687 Wmk. Mac aw's Head Pick 31 Graded Gem Uncirculated 66 EPQ PMG **1**



595 Honduras Banco Central 2 Lempiras, 2001 S/N K9478388 Pick 80Ac Graded Gem Uncirculated 65 EPQ PMG **1**



596 Honduras Banco Central 2 Lempiras, 2004-2006 S/N P9703423 Pick 80Ae Graded Gem Uncirculated 65 EPQ PMG **1**



597 Lebanon Banque de Syrie et du Liban 1 Livre, 1939 (First issue 1st September 1939) S/N B.154 03826799 Pick 15 Fine. **1**



598 Lebanon Banque de Syrie et du Liban 1 Livre, 1939 (Provisional issue 1st September 1939), Overprint Liban Printer BWC, Blue Overprint type A S/N AX095,541 Pick 26a Very fine. **1**



599 Lebanon Banque de Syrie et du Liban 1 Livre, 1939 (Provisional issue 1st September 1939), Overprint Liban Printer BWC, Lilac Overprint type B S/N DE078,840 Pick 26 b Black spots. Fine. **1**



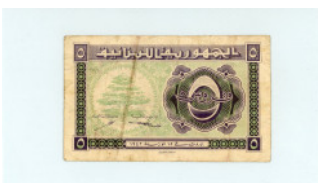
600 Lebanon Banque de Syrie et du Liban 1 Livre, 1939 (Provisional issue 1st September 1939), Overprint Liban Printer BWC, Olive Overprint type C S/N DR038,631 Pick 26 c Fine/Very fine. **1**



601 Lebanon Banque de Syrie et du Liban 1 Livre, 1939 (Provisional issue 1st September 1939), Overprint Liban Printer BWC, Pink Overprint type D S/N EO090,992 Pick 26 d Small hole and tears. Very good. **1**



602 Lebanon Banque de Syrie et du Liban 5 Livre, 1939 (Provisional issue 1st September 1939), Overprint Liban Printer BWC, Green Overprint type C S/N AV034,953 Pick 27c Good. **1**



603 Lebanon Republique Libanese 5 Piastres, 15th July 1942 S/N - Pick 34 Fine. **1**



604 Lebanon Republique Libanese 10 Piastres, 31st July 1942 S/N - Pick 35 Very good. **1**



605 Lebanon Republique Libanese 5 Piastres, 15th February 1944 S/N - Pick 38 Extremely fine/ Almost uncirculated. **1**



606 Lebanon Republique Libanese 10 Piastres, 15th February 1944 S/N - Pick 39 Fine. **1**



607 Lebanon Republique Libanese 5 Piastres, 12th January 1948 S/N - Pick 40 Extremely fine. **1**



608 Lebanon Republique Libanese 10 Piastres, 12th January 1948 S/N A.345034 Pick 41 Almost uncirculated. **1**



609 Lebanon Republique Libanese 25 Piastres, 12th January 1948 S/N 555485 Pick 42 Very good. **1**



610 Lebanon Republique Libanese 50 Piastres, 12th January 1948 S/N 834653 Pick 43 Almost extremely fine. **1**



611 Lebanon Republique Libanese 5 Piastres, 21st November 1950 S/N - Pick 46 Very fine. **1**



612 Lebanon Republique Libanese 10 Piastres, 21st November 1950 S/N - Pick 47 Two pinholes. Almost uncirculated. **1**



613 Netherlands Antilles Dutch Administration 1 Gulden, 1970 S/N D0379644 Pick 20 a Graded Gem Uncirculated 66 EPQ PMG **1**



614 Portugal Banco de Portugal 20 Escudos, 27th July 1971 S/N OS86686 Printer De La Rue LTDR Pick 173 Graded Choice Uncirculated 64 Details, Writing in pencil PCGS Gold Shield **1**



615 Scotland Royal of Bank of Scotland Ltd 1 Pound, 2001 S/N C/92 933049 Pick 351 e **1**



616 Spain Banco de Espana 1000 Pesetas, 17th September 1991 S/N 6B5151085 Printer FNMT Pick 154 Graded About Uncirculated 53 PCGS Gold Shield **1**



617 Suriname Centrale Bank 100 Gulden, 1985 S/N 0626567328 Wmk. Parrot's Head Pick 128b Graded Gem Uncirculated 65 EPQ PMG **1**



618 Switzerland Switzerland National Bank 100 Franken, (19)75 S/N 75K 3297722 Pic k 57a Graded About Uncirculated 55 OPQ PCGS Gold Shield **1**



619 Tajikistan National Bank 1 Ruble, 1994 S/N AB9855757 Wmk. Open Stars Pick 1a Graded Gem Uncirculated 66 EPQ PMG **1**



620 Turkey 50 Kurush, AH1277 (1861) S/N - Second "Kaime" Issue Red-brown. Back 5 line of text above date. Seal of Tefvik A couple of pinholes. Very fine. **1**



621 Turkey Central Bank 100 Lira, 1970 (ND 1979) S/N 105616528 Wmk. K.Ataturk Pic ck 189b Graded Gem Uncirculated 67 EPQ PMG **1**



622 Turkey Central Bank 100.000 Lira 1970 (ND 1997) S/N H57140649 Wmk. K.Ataturk Pick 206 Graded Gem Uncirculated 66 EPQ PMG **1**