



1 KINGS OF THRACE (Macedonian). Lysimachos (305-281 BC). Ae. 5.41 Gr. 18.2 m m. **5**



2 KINGS OF THRACE (Macedonian). Lysimachos (305-281 BC). Ae. 4.81 Gr. 20.8 m m. **5**



3 KINGS OF THRACE (Macedonian). Lysimachos (305-281 BC). Ae. 4.78 Gr. 20 mm. **5**



4 KINGS OF MACEDON. Alexander III 'the Great' (336-323 BC). Ae 1/2 Unit. 3.68 Gr. 16 mm. **5**



5 KINGS OF MACEDON. Alexander III 'the Great' (336-323 BC). Ae Unit. 4.11 Gr. 16 mm. **5**



6 CARIA. Rhodes. Fourree Didrachm (Circa 340-316 BC). 4.88 Gr. 17 mm. **5**



7 KINGS OF MACEDON. Philip III Arrhidaios (323-317 BC). Ae 1/2 Unit. 3.73 Gr. 16 m m. **5**



8 KINGS OF MACEDON. Philip II (359-336 BC). Ae. 10.81 Gr. 26.7 mm. **5**



9 KINGS OF MACEDON. Philip II (359-336 BC). Ae. 9.17 Gr. 18 mm. **5**



10 KINGS OF MACEDON. Philip III Arrhidaios (323-317 BC). Drachm. 4.24 Gr. 18 m m. **5**



11 KINGS OF MACEDON. Philip III Arrhidaios (323-317 BC). Drachm. 4.25 Gr. 16.5 m m. **5**



12 KINGS OF MACEDON. Philip III Arrhidaios (323-317 BC). Drachm. 4.29 Gr. 16.8 m m. **5**



13 KINGS OF MACEDON. Philip III Arrhidaios (323-317 BC). Drachm. 4.28 Gr. 17.3 m m. **5**



14 KINGS OF MACEDON. Alexander III 'the Great' (336-323 BC). Drachm. 3.95 Gr. 18.8 mm. **5**



15 KINGS OF MACEDON. Alexander III 'the Great' (336-323 BC). Drachm. 4.2 Gr. 16.4 mm. **5**



16 KINGS OF MACEDON. Alexander III 'the Great' (336-323 BC). Drachm. 4.31 Gr. 17 mm. **5**



17 KINGS OF MACEDON. Alexander III 'the Great' (336-323 BC). Drachm. 4.23 Gr. 16 mm. **5**



18 KINGS OF MACEDON. Alexander III 'the Great' (336-323 BC). Drachm. 4.3 Gr. 18 mm. **5**



19 KINGS OF MACEDON. Alexander III 'the Great' (336-323 BC). Drachm. 4.2 Gr. 18.2 mm. **5**



20 KINGS OF MACEDON. Alexander III 'the Great' (336-323 BC). Drachm. 4.3 Gr. 18.4 mm. **5**



21 KINGS OF MACEDON. Alexander III 'the Great' (336-323 BC). Drachm. 4.08 Gr. 17.5 mm. **5**



22 KINGS OF MACEDON. Alexander III 'the Great' (336-323 BC). Drachm. 4.11 Gr. 16.6 mm. **5**



23 KINGS OF MACEDON. Alexander III 'the Great' (336-323 BC). Drachm. 4.27 Gr. 17.6 mm. **5**



24 KINGS OF MACEDON. Alexander III 'the Great' (336-323 BC). Drachm. 4.25 Gr. 17.8 mm. **5**



25 KINGS OF MACEDON. Alexander III 'the Great' (336-323 BC). Drachm. 4.18 Gr. 1
7.3 mm. **5**



26 KINGS OF MACEDON. Alexander III 'the Great' (336-323 BC). Drachm. 4.19 Gr. 1
7.1 mm. **5**



27 KINGS OF MACEDON. Alexander III 'the Great' (336-323 BC). Drachm. 4.21 Gr. 1
6.5 mm. **5**



28 KINGS OF MACEDON. Alexander III 'the Great' (336-323 BC). Drachm. 4.22 Gr. 1
7.7 mm. **5**



29 KINGS OF MACEDON. Alexander III 'the Great' (336-323 BC). Drachm. 4.24 Gr. 1
8.5 mm. **5**



30 KINGS OF MACEDON. Alexander III 'the Great' (336-323 BC). Drachm. 4.28 Gr. 1
6.3 mm. **5**



31 KINGS OF MACEDON. Alexander III 'the Great' (336-323 BC). Drachm. 4.28 Gr. 1
8.3 mm. **5**



32 KINGS OF MACEDON. Alexander III 'the Great' (336-323 BC). Drachm. 4.26 Gr. 1
8.4 mm. **5**



33 KINGS OF MACEDON. Alexander III 'the Great' (336-323 BC). Drachm. 4.25 Gr. 17.6 mm. **5**



34 KINGS OF MACEDON. Alexander III 'the Great' (336-323 BC). Drachm. 4.26 Gr. 18 mm. **5**



35 KINGS OF MACEDON. Alexander III 'the Great' (336-323 BC). Drachm. 4.29 Gr. 18 mm. **5**



36 KINGS OF MACEDON. Alexander III 'the Great' (336-323 BC). Drachm. 4.24 Gr. 16.2 mm. **5**



37 KINGS OF MACEDON. Alexander III 'the Great' (336-323 BC). Drachm. 4.27 Gr. 17.7 mm. **5**



38 KINGS OF MACEDON. Alexander III 'the Great' (336-323 BC). Drachm. 4.27 Gr. 18.6 mm. **5**



39 KINGS OF MACEDON. Alexander III 'the Great' (336-323 BC). Drachm. 4.31 Gr. 16.3 mm. **5**



40 KINGS OF MACEDON. Alexander III 'the Great' (336-323 BC). Drachm. 4.37 Gr. 17 mm. **5**



41 KINGS OF MACEDON. Alexander III 'the Great' (336-323 BC). Drachm. 4.28 Gr. 1
8.5 mm. **5**



42 KINGS OF MACEDON. Alexander III 'the Great' (336-323 BC). Drachm. 4.37 Gr. 1
8.4 mm. **5**



43 KINGS OF MACEDON. Alexander III 'the Great' (336-323 BC). Drachm. 4.28 Gr. 1
6.8 mm. **5**



44 KINGS OF MACEDON. Alexander III 'the Great' (336-323 BC). Drachm. 4.28 Gr. 18
mm. **5**



45 KINGS OF MACEDON. Alexander III 'the Great' (336-323 BC). Drachm. 4.35 Gr. 1
7.2 mm. **5**



46 KINGS OF MACEDON. Alexander III 'the Great' (336-323 BC). Drachm. 4.34 Gr. 1
6.6 mm. **5**



47 KINGS OF MACEDON. Alexander III 'the Great' (336-323 BC). Drachm. 4.29 Gr. 1
6.7 mm. **5**



48 KINGS OF MACEDON. Alexander III 'the Great' (336-323 BC). Drachm. 4.29 Gr. 1
7.2 mm. **5**



49 KINGS OF MACEDON. Alexander III 'the Great' (336-323 BC). Drachm. 4.31 Gr. 17.2 mm. **5**



50 KINGS OF MACEDON. Alexander III 'the Great' (336-323 BC). Drachm. 4.28 Gr. 17.2 mm. **5**



51 KINGS OF MACEDON. Alexander III 'the Great' (336-323 BC). Drachm. 4.31 Gr. 18.5 mm. **5**



52 KINGS OF MACEDON. Alexander III 'the Great' (336-323 BC). Drachm. 4.27 Gr. 17 mm. **5**



53 KINGS OF MACEDON. Alexander III 'the Great' (336-323 BC). Drachm. 4.36 Gr. 17.7 mm. **5**



54 KINGS OF MACEDON. Alexander III 'the Great' (336-323 BC). Drachm. 4.31 Gr. 18 mm. **5**



55 KINGS OF MACEDON. Alexander III 'the Great' (336-323 BC). Tetradrachm. 16.72 Gr. 26.4 mm. **5**



56 KINGS OF MACEDON. Alexander III 'the Great' (336-323 BC). Tetradrachm. 16.93 Gr. 25.2 mm. **5**



- 57** KINGS OF MACEDON. Alexander III 'the Great' (336-323 BC). Ae. 5.47 Gr. 20 mm. **5**



- 58** KINGS OF MACEDON. Alexander III 'the Great' (336-323 BC). Ae. 6 Gr. 16.2 mm. **5**



- 59** KINGS OF MACEDON. Alexander III 'the Great' (336-323 BC). Ae. 5.33 Gr. 20 mm. **5**



- 60** KINGS OF MACEDON. Alexander III 'the Great' (336-323 BC). Ae. 4.22 Gr. 17.4 m m. **5**



- 61** KINGS OF MACEDON. Alexander III 'the Great' (336-323 BC). Ae. 5.64 Gr. 16.6 m m. **5**



- 62** KINGS OF MACEDON. Alexander III 'the Great' (336-323 BC). Ae. 5.18 Gr. 19 mm. **5**



- 63** KINGS OF MACEDON. Alexander III 'the Great' (336-323 BC). Ae. 5.79 Gr. 18 mm. **5**



- 64** KINGS OF MACEDON. Alexander III 'the Great' (336-323 BC). Ae. 6.47 Gr. 17.6 m m. **5**



65 KINGS OF MACEDON. Alexander III 'the Great' (336-323 BC). Ae. 6.53 Gr. 18.6 m m. **5**



66 KINGS OF MACEDON. Alexander III 'the Great' (336-323 BC). Ae. 6.57 Gr. 18.6 m m. **5**



67 KINGS OF MACEDON. Alexander III 'the Great' (336-323 BC). Ae. 5.48 Gr. 18 mm. **5**



68 KINGS OF MACEDON. Alexander III 'the Great' (336-323 BC). Ae. 6.24 Gr. 18.7 m m. **5**



69 KINGS OF MACEDON. Alexander III 'the Great' (336-323 BC). Ae. 5.89 Gr. 16.2 m m. **5**



70 KINGS OF MACEDON. Alexander III 'the Great' (336-323 BC). Ae. 5.86 Gr. 17.7 m m. **5**



71 KINGS OF MACEDON. Alexander III 'the Great' (336-323 BC). Ae. 1.72 Gr. 12 mm. **5**



72 KINGS OF MACEDON. Alexander III 'the Great' (336-323 BC). Ae Unit. 5.62 Gr. 19 mm. **5**



73 KINGS OF MACEDON. Philip III Arrhidaios (323-317 BC). Ae. 4 Gr. 17.6 mm. **5**



74 IONIA. Ephesos. Cistophor (180-67 BC). 12.39 Gr. 28.3 mm. **5**



75 IONIA. Ephesos. Cistophor (180-67 BC). 12.48 Gr. 29 mm. **5**



76 IONIA. Ephesos. Drachm (Circa 340-325 BC). 2.92 Gr. 14.8 mm. **5**



77 IONIA. Ephesos. Ae (4th century BC). 2.51 Gr. 15 mm. **5**



78 IONIA. Ephesos. Ae (4th century BC). 1.79 Gr. 12 mm. **5**



79 IONIA. Kolophon. Tetartemorion (Circa 450-410 BC). 0.14 Gr. 6 mm. **5**



80 IONIA. Kolophon. Ae (Circa 389-350 BC). 1.5 Gr. 10.6 mm. **5**



81 IONIA. Miletos. Obol or Hemihekte (Late 6th-early 5th centuries BC). 1.02 Gr. 9.4 m m. **5**



82 IONIA. Miletos. Obol or Hemihekte (Late 6th-early 5th centuries BC). 1.14 Gr. 8.8 m m. **5**



83 IONIA. Miletos. Obol or Hemihekte (Late 6th-early 5th centuries BC). 1.22 Gr. 10.8 mm. **5**



84 IONIA. Miletos. Ae (Circa 313/12-290 BC). 4.18 Gr. 17 mm. **5**



85 IONIA. Phokaia. Diobol (Circa 521-478 BC). 1.24 Gr. 9.4 mm. **5**



86 IONIA. Phokaia. Diobol (Circa 521-478 BC). 1.27 Gr. 9.2 mm. **5**



87 IONIA. Phokaia. Diobol (Circa 521-478 BC). 1.29 Gr. 9.2 mm. **5**



88 IONIA. Phokaia. Hemidrachm or Triobol (Circa 521-478 BC). 1.58 Gr. 9.4 mm. **5**



89 IONIA. Smyrna. Ae (Circa 145-125 BC). 9.0 Gr. 21.7 mm.

5



90 IONIA. Smyrna. Ae (75-50 BC). 6.18 Gr. 19 mm.

5



91 IONIA. Smyrna. Ae (Circa 145-125 BC). 3.48 Gr. 23 mm.

5



92 IONIA. Smyrna. Ae (75-50 BC). 3.73 Gr. 20.5 mm.

5



93 IONIA. Teos. Trihemiobol (Circa 544-494 BC). 1.31 Gr. 10.8 mm.

5



94 IONIA. Teos. Trihemiobol (Circa 544-494 BC). 1.39 Gr. 12.4 mm.

5



95 AEOLIS. Kyme. Ae (Circa 350-250 BC). 2.28 Gr. 13 mm.

5



96 PHRYGIA. Kibyra. Ae (2nd-1st centuries BC). 3.53 Gr. 16 mm.

5



97 BITHYNIA. Nicomedia. Ae. C. Papirius Carbo (Proconsul, 62-59 BC). 5.95 Gr. 21.6 mm. **5**



98 KINGS OF PAPHLAGONIA. Pylaimenes II. / III. Euergetes (Circa 133-103 BC). Ae. 3.77 Gr. 18 mm. **5**



99 PAPHLAGONIA. Sinope. Ae. Struck under Mithradates VI (Circa 120-111 or 110-100 BC). 4.11 Gr. 16 mm. **5**



100 PAPHLAGONIA. Sinope. Drachm (Circa 330-300 BC). 6 Gr. 18.8 mm. **5**



101 PAPHLAGONIA. Sinope. Drachm (Circa 330-300 BC). 6.38 Gr. 18.4 mm. **5**



102 PAPHLAGONIA. Sinope. Drachm (Circa 330-300 BC). 6.02 Gr. 18.5 mm. **5**



103 PAPHLAGONIA. Sinope. Drachm (Circa 330-300 BC). 5.78 Gr. 19.1 mm. **5**



104 PAPHLAGONIA. Sinope. Drachm (Circa 330-300 BC). 5.77 Gr. 19.6 mm. **5**



105 PAPHLAGONIA. Sinope. Drachm (Circa 330-300 BC). 5.85 Gr. 20 mm. **5**



106 PAPHLAGONIA. Sinope. Drachm (Circa 330-300 BC). 6.05 Gr. 18.2 mm. **5**



107 PAPHLAGONIA. Sinope. Drachm (Circa 330-300 BC). 5.91 Gr. 19.2 mm. **5**



108 PAPHLAGONIA. Sinope. Drachm (Circa 330-300 BC). 5.65 Gr. 18 mm. **5**



109 PAPHLAGONIA. Sinope. Drachm (Circa 330-300 BC). 5.96 Gr. 19.8 mm. **5**



110 PAPHLAGONIA. Sinope. Drachm (Circa 330-300 BC). 5.94 Gr. 19 mm. **5**



111 PAPHLAGONIA. Sinope. Drachm (Circa 330-300 BC). 5.97 Gr. 18 mm. **5**



112 PAPHLAGONIA. Sinope. Drachm (Circa 330-300 BC). 5.93 Gr. 19 mm. **5**



113 PAPHLAGONIA. Sinope. Drachm (Circa 330-300 BC). 5.49 Gr. 17.5 mm. **5**



114 PAPHLAGONIA. Sinope. Drachm (Circa 330-300 BC). 5.13 Gr. 18 mm. **5**



115 PAPHLAGONIA. Sinope. Drachm (Circa 330-300 BC). 5.49 Gr. 19 mm. **5**



116 PAPHLAGONIA. Sinope. Drachm (Circa 330-300 BC). 5.91 Gr. 18 mm. **5**



117 PAPHLAGONIA. Sinope. Drachm (Circa 330-300 BC). 5.53 Gr. 20 mm. **5**



118 PAPHLAGONIA. Sinope. Drachm (Circa 330-300 BC). 5.91 Gr. 19 mm. **5**



119 PAPHLAGONIA. Sinope. Drachm (Circa 330-300 BC). 4.86 Gr. 20.5 mm. **5**



120 TROAS. Birytis. Ae (4th-3rd centuries BC). 1.14 Gr. 11 mm. **5**



121 TROAS. Neandria. Ae (Late 4th century BC). 7.38 Gr. 19.5 mm. **5**



122 TROAS. Tenedos (Circa 5th-4th century BC). Ae. 1.03 Gr. 10 mm. **5**



123 ACHAEMENID EMPIRE. Tissaphernes (Satrap of Mysia, 400-395 BC). Ae. Astyra. 1.28 Gr. 10.3 mm. **5**



124 MYSIA. Kyzikos. Hemiobol (Circa 450-400 BC). 0.29 Gr. 7.3 mm. **5**



125 MYSIA. Kyzikos. Ae (2nd-1st centuries BC). 13.16 Gr. 14 mm. **5**



126 MYSIA. Pergamon. Ae (Early-mid 2nd century BC). 8 Gr. 20.5 mm. **5**



127 MYSIA. Pergamon. Ae (Early-mid 2nd century BC). 7.26 Gr. 19 mm. **5**



128 MYSIA. Pergamon. Ae (Early-mid 2nd century BC). 6.54 Gr. 18 mm. **5**



129 MYSIA. Pergamon. Ae (Mid-late 2nd century BC). 6 Gr. 18 mm. **5**



130 MYSIA. Pergamon. Ae (Mid-late 2nd century BC). 9.89 Gr. 20 mm. **5**



131 MYSIA. Pergamon. Ae (Circa 310-282 BC). 1.17 Gr. 11.8 mm. **5**



132 MYSIA. Pergamon. Ae (Mid-late 2nd century BC). 8.26 Gr. 19 mm. **5**



133 MYSIA. Pergamon. Ae (Circa 200-133 BC). 4.3 Gr. 21 mm. **5**



134 MYSIA. Pergamon. Ae (Circa 200-133 BC). 3.15 Gr. 16 mm. **5**



135 MYSIA. Pergamon. Ae (Circa 200-133 BC). 2.94 Gr. 19 mm. **5**



136 MYSIA. Pergamon. Ae (2nd-1st centuries BC). 2.07 Gr. 13.5 mm. **5**



137 MYSIA. Pergamon. Ae (Circa 440-350 BC). 1.88 Gr. 12 mm. **5**



138 CARIA. Antioch ad Maeandrum. (Circa 2nd century BC). Ae. 3.46 Gr. 17 mm. **5**



139 CARIA. Antiochia. Pseudo-autonomous. Ae (3rd century AD). 6.58 Gr. 24 mm. **5**



140 CARIA. Iasos. Ae (Circa 250-190 BC). 3.17 Gr. 18 mm. **5**



141 CARIA. Uncertain. Hemiobol (Circa 5th century BC). 0.44 Gr. 7.2 mm. **5**



142 CARIA. Mylasa. Ae (3rd-2nd centuries BC). 1.41 Gr. 13 mm. **5**



143 CARIA. Mylasa. Ae (3rd-2nd centuries BC). 1.56 Gr. 12.6 mm. **5**



144 CARIA. Rhodes. Didrachm (Circa 340-316 BC). 6.12 Gr. 18.6 mm. **5**



145 CARIA. Rhodes. Didrachm (Circa 340-316 BC). 5.78 Gr. 20 mm. **5**



146 CARIA. Rhodes. Didrachm (Circa 340-316 BC). 5.78 Gr. 19 mm. **5**



147 CARIA. Rhodes. Didrachm (Circa 340-316 BC). 5.44 Gr. 18.7 mm. **5**



148 CARIA. Rhodes. Fourree Didrachm (Circa 340-316 BC). 4.88 Gr. 17 mm. **5**



149 CARIA. Tabai. Ae (2nd-1st century BC). 3.15 Gr. 17.7 mm. **5**



150 CARIA. Tabai. Ae (2nd-1st century BC). 5.83 Gr. 19 mm. **5**



151 ASIA MINOR. Uncertain. Fourree Obol (5th century BC). 0.91 Gr. 8.2 mm. **5**



152 LYDIA. Apollonis. Ae (2nd-1st century BC). 2.46 Gr. 16 mm. **5**



153 LYDIA. Philadelphia. Ae (2nd-1st century BC). 4.55 Gr. 16 mm. **5**



154 LYDIA. Philadelphia. Ae (2nd-1st century BC). 6.12 Gr. 15.5 mm. **5**



155 LYDIA. Sardes. Ae (2nd-1st centuries BC). 3.18 Gr. 13.6 mm. **5**



156 LYDIA. Sardes. Ae (2nd-1st centuries BC). 4.22 Gr. 14 mm. **5**



157 LYDIA. Sardes. Ae (2nd-1st centuries BC). 4.44 Gr. 14 mm. **5**



158 LYDIA. Sardes. Ae (2nd-1st centuries BC). 5.13 Gr. 16 mm. **5**



159 LYDIA. Sardes. Ae (2nd-1st centuries BC). 5.2 Gr. 17.2 mm. **5**



160 LYDIA. Sardes. Ae (Circa 133 BC-14 AD). 3.76 Gr. 19 mm. **5**



161 LYDIA. Thyateira. Ae (2nd century BC). 4.47 Gr. 15.5 mm. **5**



162 AEOLIS. Elaia. Obol (4th-3rd century BC). 1.2 Gr. 9.7 mm. **5**



163 AEOLIS. Elaia. Obol (4th-3rd century BC). 0.85 Gr. 10 mm. **5**



164 AEOLIS. Elaia. Ae (Circa 4th century BC). 1.38 Gr. 11 mm. **5**



165 AEOLIS. Elaia. Ae (Circa 2nd-1st century BC). 3.77 Gr. 16 mm. **5**



166 AEOLIS. Kyme. Ae (Circa 320-250 BC). 1.09 Gr. 11 mm. **5**



167 AEOLIS. Kyme. Ae (Circa 250-200 BC). 10.56 Gr. 22 mm. **5**



168 AEOLIS. Cyme. Pseudo-autonomous. Time of Gallienus (253-268). Ae. 2.87 Gr. 18.2 mm. **5**



169 AEOLIS. Temnos. Ae (3rd century BC). 1.23 Gr. 11 mm.

5



170 PONTOS. Amisos. Ae. Struck under Mithradates VI (Circa 120-111 or 110-100 B C). 3.87 Gr. 17.5 mm.

5



171 PONTOS. Amisos. Ae. Struck under Mithradates VI (Circa 120-111 or 110-100 B C). 4.08 Gr. 17 mm.

5



172 PONTOS. Amisos. Time of Mithradates VI Eupator (Circa 105-90 or 90-85 BC). A e. 7.83 Gr. 21 mm.

5



173 PONTOS. Amisos. Time of Mithradates VI Eupator (Circa 105-90 or 90-85 BC). A e. 7.89 Gr. 21 mm.

5



174 PONTOS. Amisos. Time of Mithradates VI Eupator (Circa 105-90 or 90-85 BC). A e. 8.33 Gr. 21.5 mm.

5



175 PONTOS. Amisos. Ae (Circa 111-105 or 95-90 BC). Time of Mithradates VI Eupator. 8.14 Gr. 20 mm.

5



176 PONTOS. Amisos. Ae (Circa 85-65 BC). Time of Mithradates VI Eupator. 6.44 Gr. 21 mm.

5



177 PONTOS. Uncertain, possibly Amisos. Ae. Struck under Mithradates VI (Circa 119 -100 BC). 1.95 Gr. 11.6 mm. **5**



178 PONTOS. Uncertain, possibly Amisos. Ae. Struck under Mithradates VI (Circa 119 -100 BC). 2.13 Gr. 12 mm. **5**



179 PONTOS. Uncertain, possibly Amisos. Ae. Struck under Mithradates VI (Circa 119 -100 BC). 1.7 Gr. 11 mm. **5**



180 PONTOS. Uncertain, possibly Amisos. Ae. Struck under Mithradates VI (Circa 119 -100 BC). 2.73 Gr. 12.5 mm. **5**



181 PONTOS. Uncertain (Amisos?). Time of Mithradates VI (Circa 130-100 BC). Ae. 4.82 Gr. 16 mm. **5**



182 PONTOS. Uncertain (possibly Amisos). Ae (130-100 BC). 10.33 Gr. 19.5 mm. **5**



183 PONTOS. Uncertain (possibly Amisos). Ae (130-100 BC). 21.01 Gr. 23 mm. **5**



184 PONTOS. Uncertain, possibly Amisos. Ae (Circa 130-100 BC). 24.75 Gr. 30 mm. **5**



185 ACHAEMENID EMPIRE. Time of Darios I to Xerxes II (485-420 BC). Siglos. 5.48
Gr. 17 mm. **5**



186 ACHAEMENID EMPIRE. Time of Darios I to Xerxes II (485-420 BC). Siglos. 5.44
Gr. 17.3 mm. **5**



187 ACHAEMENID EMPIRE. Time of Darios I to Xerxes II (485-420 BC). Siglos. 5.37
Gr. 17.4 mm. **5**



188 ACHAEMENID EMPIRE. Time of Darios I to Xerxes II (485-420 BC). Siglos. 5.32
Gr. 16.6 mm. **5**



189 ACHAEMENID EMPIRE. Time of Darios I to Xerxes II (485-420 BC). Siglos. 5.32
Gr. 15.1 mm. **5**



190 ACHAEMENID EMPIRE. Time of Darios I to Xerxes II (485-420 BC). Siglos. 5.28
Gr. 15 mm. **5**



191 ACHAEMENID EMPIRE. Time of Darios I to Xerxes II (485-420 BC). Siglos. 5.28
Gr. 16.1 mm. **5**



192 ACHAEMENID EMPIRE. Time of Darios I to Xerxes II (485-420 BC). Fourree Siglos. 4.63 Gr. 16.5 mm. **5**



193 ACHAEMENID EMPIRE. Time of Darios I to Xerxes II (485-420 BC). Siglos. 5.2 Gr. 15.1 mm. **5**



194 ACHAEMENID EMPIRE. Time of Darios I to Xerxes II (485-420 BC). Siglos. 5.5 Gr. 15.3 mm. **5**



195 ACHAEMENID EMPIRE. Time of Darios I to Xerxes I (Circa 505-480 BC). Siglos. 5.4 Gr. 14.2 mm. **5**



196 KINGS OF PARTHIA. Phraates IV (Circa 38-2 BC). Drachm. 3.6 Gr. 17.1 mm. **5**



197 KINGS OF PARTHIA. Orodes II (Circa 57-38 BC). Drachm. 3.36 Gr. 18 mm. **5**



198 KINGS OF PARTHIA. Sinatrukes (93/2-70/69 BC). Drachm. 3.63 Gr. 21 mm. **5**



199 KINGS OF PARTHIA. Orodes II (Circa 57-38 BC). Drachm. 3.67 Gr. 18.7 mm. **5**



200 KINGS OF PARTHIA. Mithradates II (121-91 BC). Drachm. 3.71 Gr. 20 mm. **5**



201 KINGS OF PARTHIA. Mithradates II (121-91 BC). Drachm. 3.73 Gr. 19 mm. **5**



202 KINGS OF PARTHIA. Mithradates II (121-91 BC). Drachm. 3.84 Gr. 19 mm. **5**



203 KINGS OF PARTHIA. Orodes II (57-38 BC). Drachm. 3.86 Gr. 20 mm. **5**



204 KINGS OF PARTHIA. Mithradates II (121-91 BC). Drachm. 3.92 Gr. 20 mm. **5**



205 KINGS OF PARTHIA. Mithradates III (87-80 BC). Drachm. 4.01 Gr. 20 mm. **5**



206 KINGS OF PARTHIA. Vologases VI (Circa 208-228). BI Tetradrachm. 12.31 Gr. 26.5 mm. **5**



207 CILICIA. Uncertain. Obol (4th century BC). 0.7 Gr. 11 mm. **5**



208 CILICIA. Uncertain. 4th century BC. Hemiobol. 0.37 Gr. 6.6 mm. **5**



209 CILICIA. Uncertain. Obol (4th century BC). 0.48 Gr. 10 mm. **5**



210 CILICIA. Uncertain. Obol (4th century BC). 0.57 Gr. 10.6 mm. **5**



211 CILICIA. Uncertain. Obol (4th century BC). 0.85 Gr. 9.4 mm. **5**



212 CILICIA. Uncertain. Obol (4th century BC). 0.37 Gr. 10.4 mm. **5**



213 CILICIA. Aigeai. Ae (Circa 130/20-88/77 BC). 6.7 Gr. 22 mm. **5**



214 CILICIA. Corycus (ca 1st Century BC) Ae. 5.94 Gr. 20 mm. **5**



215 CILICIA. Corycus (ca 1st Century BC) Ae. 6.45 Gr. 21 mm. **5**



216 CILICIA. Elaioussa Sebaste. Ae (1st century BC). 6.91 Gr. 22 mm. **5**



217 CILICIA. Kelenderis. Obol (Circa 410-375 BC). 0.40 Gr. 6.4 mm. **5**



218 CILICIA. Olba. Ajax (High Priest, 10-15). Ae. Dated year 2 (11/2). 4.9 Gr. 20 mm. **5**



219 CILICIA. Olba. Ajax (High Priest, 10-15). Ae. Dated year 2 (11/2). 6.5 Gr. 21 mm. **5**



220 CILICIA. Seleukeia. Ae (2nd-1st centuries BC). 3.39 Gr. 17 mm. **5**



221 CILICIA. Seleukeia. Ae (2nd-1st centuries BC). 3.61 Gr. 18.4 mm. **5**



222 CILICIA. Seleukeia. Ae (2nd-1st centuries BC). 8.43 Gr. 23 mm. **5**



223 CILICIA. Tarsos. Mazaios (Satrap of Cilicia, 361/0-334 BC). Obol. 0.28 Gr. 8 mm. **5**



- 224** CILICIA. Tarsos. Tarkumuwa (Datames) (Satrap of Cilicia and Cappadocia, 384-361/0 BC). Obol 0.62 Gr. 10 mm. **5**



- 225** PHRYGIA. Abbaitis. Ae (2nd-1st century BC). 5.89 Gr. 21 mm. **5**



- 226** PHRYGIA. Acmonieia. Ae (1st century BC). 3.99 Gr. 16.3 mm. **5**



- 227** PHRYGIA. Amorion. Ae (2nd-1st centuries BC). 9.91 Gr. 20 mm. **5**



- 228** PHRYGIA. Apameia. Ae (Circa 88-40 BC). 7.92 Gr. 23 mm. **5**



- 229** PHRYGIA. Apameia. Ae (Circa 88-40 BC). 8.7 Gr. 25 mm. **5**



- 230** PHRYGIA. Apameia. Ae (Circa 100-50 BC). 5.69 Gr. 19 mm. **5**



- 231** PHRYGIA. Apameia. Ae (Circa 100-50 BC). 7.72 Gr. 20 mm. **5**



232 PHRYGIA. Apameia. Ae (Circa 100-50 BC). 9.92 Gr. 22 mm.

5



233 PHRYGIA. Apameia. Ae (Circa 88-40 BC). 3.85 Gr. 17 mm.

5



234 PHRYGIA. Apameia. Ae (Circa 88-40 BC). 3.36 Gr. 16 mm.

5



235 PHRYGIA. Apameia. Ae (Circa 88-40 BC). 3.31 Gr. 15.1 mm.

5



236 PHRYGIA. Apameia. Pseudo-autonomous. Time of the Severans (193-235). Ae. 1.38 Gr. 14.7 mm.

5



237 PHRYGIA. Laodicea ad Lycum. Pseudo-autonomous. Time of Tiberius (14-37). Ae. 2.97 Gr. 15.4 mm.

5



238 PHRYGIA. Laodicea ad Lycum. Pseudo-autonomous. Time of Tiberius (14-37). Ae. 3.13 Gr. 14 mm.

5



239 PHRYGIA. Laodicea ad Lycum. Pseudo-autonomous. Time of Tiberius (14-37). Ae. 3.43 Gr. 15.2 mm.

5



240 PHRYGIA. Laodikeia. Ae (Circa 158-138 BC). 7.37 Gr. 19.4 mm. **5**



241 PHRYGIA. Laodikeia. Ae (Circa 158-138 BC). 7.05 Gr. 20 mm. **5**



242 PHRYGIA. Laodikeia. Ae (Circa 158-138 BC). 5.78 Gr. 18 mm. **5**



243 PHRYGIA. Laodikeia. Ae (Circa 158-138 BC). 4.91 Gr. 15.7 mm. **5**



244 PHRYGIA. Nacolea. Domitian (81-96). Ae. 3.14 Gr. 20 mm. **5**



245 KINGS OF GALATIA. Amyntas (36-25 BC). Ae. Dated RY 5 (31/0). 8.83 Gr. 20.8 mm. **5**



246 PAMPHYLIA. Aspendos. Drachm (Circa 420-360). 4.93 Gr. 21 mm. **5**



247 PAMPHYLIA. Aspendos. Stater (Circa 465-430 BC). 10.99 Gr. 19.2 mm. **5**



248 PAMPHYLIA. Perge. Ae (3rd century BC). 4.9 Gr. 17.5 mm.

5



249 LYCAONIA. Eikonion. Ae (1st century BC). 4.58 Gr. 16.5 mm.

5



250 LYCAONIA. Laranda. Obol (Circa 324/3 BC). 0.60 Gr. 10.2 mm.

5



251 LYCAONIA. Laranda. Obol (Circa 324/3 BC). 0.46 Gr. 10.2 mm.

5



252 LYCAONIA. Laranda. Obol (Circa 324/3 BC). 0.53 Gr. 9.9 mm.

5



253 LYCAONIA. Laranda. Obol (Circa 324/3 BC). 0.49 Gr. 10 mm.

5



254 PISIDIA. Etenna. Ae (1st century BC). 5.16 Gr. 18.2 mm.

5



255 PISIDIA. Isinda. Ae (2nd-1st centuries BC). 6.82 Gr. 19.7 mm.

5



256 PISIDIA. Isinda. Ae (2nd-1st centuries BC). 7.25 Gr. 20.5 mm.

5



257 PISIDIA. Selge. Obol (Circa 350-300 BC). 0.7 Gr. 9.3 mm.

5



258 PISIDIA. Selge. Obol (Circa 350-300 BC). 0.9 Gr. 7 mm.

5



259 PISIDIA. Selge. Obol (Circa 350-300 BC). 0.85 Gr. 9 mm.

5



260 PISIDIA. Selge. Obol (Circa 350-300 BC). 0.87 Gr. 9.4 mm.

5



261 PISIDIA. Selge. Obol (Circa 350-300 BC). 0.93 Gr. 9.7 mm.

5



262 PISIDIA. Selge. Obol (Circa 350-300 BC). 0.94 Gr. 10.3 mm.

5



263 PISIDIA. Selge. Obol (Circa 350-300 BC). 1.03 Gr. 10.5 mm.

5



264 PISIDIA. Selge. Obol (Circa 350-300 BC). 0.92 Gr. 11 mm. **5**



265 PISIDIA. Selge. Obol (Circa 350-300 BC). 0.86 Gr. 9.4 mm. **5**



266 PISIDIA. Selge. Ae (2nd-1st centuries BC). 2.36 Gr. 12.8 mm. **5**



267 PISIDIA. Selge. Ae (2nd-1st centuries BC). 3.4 Gr. 16.4 mm. **5**



268 PISIDIA. Termessos. Ae (1st century BC). Dated CY 1 (72/1 BC). 4.2 Gr. 16 mm. **5**



269 KINGS OF CAPPADOCIA. Ariarathes V Eusebes Philopator (Circa 163-130 BC). Drachm. 4.02 Gr. 17.8 mm. **5**



270 KINGS OF CAPPADOCIA. Ariarathes V Eusebes Philopator (Circa 163-130 BC). Drachm. 4.05 Gr. 18 mm. **5**



271 KINGS OF CAPPADOCIA. Ariarathes V Eusebes Philopator (Circa 163-130 BC). Drachm. 3.54 Gr. 17.4 mm. **5**



272 KINGS OF CAPPADOCIA. Ariobarzanes II Philopator (Circa 63-52 BC). Drachm. 3.18 Gr. 16 mm. **5**



273 CAPPADOCIA. Caesarea. Pseudo-autonomous. Time of Trajan (98-117). Ae. 3.08 Gr. 16 mm. **5**



274 CAPPADOCIA. Caesareia (as Eusebeia). Ae (Circa 95-63 BC). 7.45 Gr. 22 mm. **5**



275 CAPPADOCIA. Caesarea (as Eusebeia). Ae (1st century BC). 3.45 Gr. 18 mm. **5**



276 KINGS OF CAPPADOCIA. Ariarathes III (Circa 230-220 BC). Ae. Tyana. 4.68 Gr. 19.4 mm. **5**



277 SELEUKID KINGDOM. Antiochos IX Eusebes Philopator (Kyzikenos) (114/3-95 B C). Tetradrachm. 15.91 Gr. 27.4 mm. **5**



278 SELEUKID KINGDOM. Antiochos III 'the Great' (222-187 BC). Tetradrachm. 16.33 Gr. 30 mm. **5**



279 SELEUKID KINGS OF SYRIA. Alexander I Balas (152-145 BC). Drachm. 3.77 Gr. 20 mm. **5**



280 SELEUKID KINGDOM. Antiochos (281-261 BC). Ae. 12.48 Gr. 24 mm. **5**



281 SELEUKID KINGS OF SYRIA. Antiochos III 'the Great' (222-187 BC). Ae. Antioch. 3.25 Gr. 15.4 mm. **5**



282 SELEUKID KINGS OF SYRIA. Antiochos III 'the Great' (222-187 BC). Ae. Antioch. 3.02 Gr. 15 mm. **5**



283 SELEUKID KINGS OF SYRIA. Seleukos I Nikator (312-281 BC). Ae. 3.08 Gr. 14.7 mm. **5**



284 SELEUKID KINGDOM. Seleukos II Kallinikos (246-225 BC). Ae. 3.36 Gr. 18.7 mm. **5**



285 SELEUKID KINGS OF SYRIA. Antiochos I Soter (281-261 BC). Ae. 2.85 Gr. 16.7 mm. **5**



286 SELEUKID KINGS OF SYRIA. Seleukos I Nikator, 312-281 BC. 6.6 Gr. 21 mm. **5**



287 SELEUKID KINGS OF SYRIA. Antiochos VI Dionysos (144-142 BC). Ae. 4.81 Gr. 17.2 mm. **5**



288 SELEUKID KINGS OF SYRIA. Achaios Usurper (220-214 BC). Ae. 4.21 Gr. 16.4 mm. **5**



289 SELEUKID KINGS OF SYRIA. Antiochos II Theos (261–246 BC). Ae. 1.86 Gr 12.5 mm. **5**



290 SELEUKID KINGS OF SYRIA. Antiochos II Theos (261–246 BC). Ae. 4.54 Gr. 16.3 mm. **5**



291 SELEUKID KINGS OF SYRIA. Antiochos II Theos (261–246 BC). Ae. 4.78 Gr. 17.1 mm. **5**



292 SELEUKID KINGS OF SYRIA. Alexander II Zabinas. 128-122 BC. Ae. 7.08 Gr. 20 mm. **5**



293 SELEUKID KINGS OF SYRIA, Seleukos I Nikator. (Circa 312-281 BC). Ae. 8.1 Gr. 21.6 mm. **5**



294 KINGS OF CAPPADOCIA. Ariarathes III (Circa 230-220 BC). Ae. Tyana. 6.68 Gr. 21 mm. **5**



295 CAPPADOCIA. Caesarea (as Eusebeia). Ae (1st century BC). 3.12 Gr. 15 mm. **5**



296 PTOLEMAIC KINGS OF EGYPT. Ptolemy III Euergetes (246-222 BC). Ae. 21.85 Gr. 31.3 mm. **5**



297 KINGS OF COMMAGENE. Epiphanes and Kallinikos (72). Ae 6.81 Gr. 19 mm. **5**



298 KINGS OF COMMAGENE. Epiphanes and Kallinikos (72). Ae 6.99 Gr. 19 mm. **5**



299 KINGS OF COMMAGENE. Epiphanes and Kallinikos (72). Ae 7.35 Gr. 19.5 mm. **5**



300 KINGS OF COMMAGENE. Antiochos IV Epiphanes (38-40 and 41-72). Ae 15.91 Gr. 28 mm. **5**



301 KINGS OF COMMAGENE. Antiochos IV Epiphanes (38-72). Ae 15.56 Gr. 26.3 mm. **5**



302 KINGS OF COMMAGENE. Antiochos IV Epiphanes (38-72). Ae 12.82 Gr. 26 mm. **5**



303 LEVANTINE REGION. Uncertain (3rd century AD). Ae. 3.39 Gr. 16.7 mm. **5**



304 PHRYGIA. Laodikeia. Ae (Circa 189-133 BC). 5.11 Gr. 19 mm. **5**



305 ASIA MINOR. Uncertain. Augustus (27 BC-14 AD). 'Sestertius'. 22.92 Gr. 35.3 m. **5**



306 BITHYNIA. Nicaea. Valerian (253-260). Ae. 8.81 Gr. 25 mm. **5**



307 BITHYNIA. Nicomedia. Trajan (98-117). Ae. 2.97 Gr. 17.4 mm. **5**



308 BITHYNIA. Nicomedia. Severus Alexander (222-235). Ae. 8.26 Gr. 24.4 mm. **5**



309 PHRYGIA. Pelta. Geta, as Caesar AD 197-209. 5.45 Gr. 22.4 mm. **5**



310 UNCERTAIN. Herennia Etruscilla AD 249-251. Rare. 5.99 Gr. 23.2 mm. **5**



311 MYSIA. Pergamum. Augustus (27 BC-14 AD). Ae. 5.34 Gr. 20 mm. **5**



312 MYSIA. Pergamum. Pseudo-autonomous. Time of Claudius to Nero (41-68). Ae. 3.22 Gr. 17.4 mm. **5**



313 IONIA. Smyrna. Pseudo-autonomous. Time of Gordian III (238-244). Ae. 6.65 Gr. 23 mm. **5**



314 LYDIA. Maionia. Pseudo-autonomous issue AD 117-138. Ae. 3.25 Gr. 15.4 mm. **5**



315 THRACE. Perinthus. Septimius Severus (193-211). Ae. 35.43 Gr. 38 mm. **5**



316 LYDIA. Philadelphia. Julia Domna (Augusta, 193-217). Ae. 13.24 Gr. 30 mm. **5**



317 LYDIA. Saitta. Pseudo-autonomous (3rd century). Ae. 4.28 Gr. 19.6 mm. **5**



318 LYDIA. Sardeis. Augustus (27 BC-AD 14). Ae. 4.95 Gr. 19.3 mm. **5**



319 IONIA. Smyrna. Nero with Poppaea (54-68). Ae. 4.25 Gr. 16.4 mm. **5**



320 LYDIA. Sardes. Nero (54-68). Ae. 3 Gr. 16 mm.

5



321 LYDIA. Tabala. Pseudo-autonomous. Time of Marcus Aurelius (161-180). Ae. 7.18 Gr. 22 mm.

5



322 PHRYGIA, Stectorium. Faustina II, wife of Marcus Aurelius, circa 161-162 AD. 9.55 Gr. 26 mm.

5



323 PHRYGIA. Acmonia. 2nd-1st century BC. Ae. 4.79 Gr. 20.5 mm.

5



324 PHRYGIA. Acmonia. Gordian III (238-244). Ae. 6.18 Gr. 25.6 mm.

5



325 PHRYGIA. Aezanis. Sabina (Augusta, 128-136/7). Ae. 3.04 Gr. 18.4 mm.

5



326 PHRYGIA, Amorium. Septimius Severus, 193-211 AD. Ae. 8.53 Gr. 24.25 mm.

5



327 PHRYGIA. Ankyra. Philip II (247-249). Ae. 5.51 Gr. 24 mm.

5



328 PHRYGIA. Apameia. Pseudo-autonomous. Time of the Severans (193 - 235). Ae. 3.54 Gr. 15 mm. **5**



329 PHRYGIA. Apameia. Hadrian (117-138). Ae. 4.27 Gr. 22 mm. **5**



330 PHRYGIA. Docimeum. Pseudo-autonomous. Time of the Antonines (138-192). Ae. 8.05 Gr. 24 mm. **5**



331 PHRYGIA. Eumeneia. Pseudo-autonomous (2nd century). Ae. 2.61 Gr. 14 mm. **5**



332 PHRYGIA. Eumeneia. Ae (Circa 133-30 BC). 8.13 Gr. 21.1 mm. **5**



333 PHRYGIA. Laodicea ad Lycum. Nero (Caesar, 50-54). Ae. 4.05 Gr. 16 mm. **5**



334 PHRYGIA. Hierapolis. Augustus (27 BC-14 AD). Ae. 5.3 Gr. 18.7 mm. **5**



335 CILICIA. Hierapolis-Kastabala. Ae (2nd-1st centuries BC). 11 Gr. 22.2 mm. **5**



336 UNCERTAIN . Ae. 4.47 Gr. 20.4 mm.

5



337 PHRYGIA. Eumeneia. Agrippina II (Augusta, 50-59). Ae. 4.3 Gr. 19.1 mm.

5



338 PHRYGIA. Eumeneia. Agrippina II (Augusta, 50-59). Ae. 3.96 Gr. 18.3 mm.

5



339 LYDIA. Julia Gordus. Pseudo-autonomous (2nd century). Ae. 3.68 Gr. 18 mm.

5



340 PHRYGIA. Laodicea ad Lycum. Augustus (27 BC-14 AD). Ae. 3.38 Gr. 16.6 mm.

5



341 PHRYGIA. Laodicea ad Lycum. Pseudo-autonomous. Time of Nero (54-68). Ae. 4.29 Gr. 14.6 mm.

5



342 PHRYGIA. Laodicea ad Lycum. Pseudo-autonomous. Time of Tiberius (14-37). Ae. 4.97 Gr. 17.1 mm.

5



343 PHRYGIA. Laodikeia ad Lycum. Pseudo-autonomous (Circa 3rd century AD). Ae. 4.87 Gr. 21 mm.

5



344 PHRYGIA. Laodicea ad Lycum. Caracalla (198-217). Ae. 7.2 Gr. 24 mm. **5**



345 PHRYGIA. Laodicea ad Lycum. Otacilia Severa (Augusta, 244-249). Ae. 5.78 Gr. 23 mm. **5**



346 PHRYGIA. Nacolea. Geta 198-209 Ae. 5.87 Gr. 22 mm. **5**



347 PHRYGIA. Philomelion . Severus Alexander AD 222-235. Ae. 2.18 Gr. 16 mm. **5**



348 PHRYGIA. Philomelion . Severus Alexander AD 222-235. Ae. 2.27 Gr. 17 mm. **5**



349 PHRYGIA. Prynnessos. Marcus Aurelius AD 161-180. Ae. 2.77 Gr. 21 mm. **5**



350 PHRYGIA. Sebaste. Nero (54-68). Ae. 5.27 Gr. 18.3 mm. **5**



351 UNCERTAIN. COMMODUS (177-192). Ae. 6.68 Gr. 24 mm. **5**



352 GALATIA. Ancyra. Geta (209-211). Ae. 8.01 Gr. 24 mm.

5



353 GALATIA. Ancyra. Gallienus (253-268). Ae. 11.58 Gr. 28 mm.

5



354 GALATIA. Koinon of Galatia. Trajan (98-117). Ae. 12.64 Gr. 26 mm.

5



355 LYCAONIA. Iconium (as Claudiconium). Titus (Caesar, 69-79). Ae. 4.95 Gr. 20.4 mm.

5



356 LYCAONIA. Iconium. Antoninus Pius (138-161). Ae. 4.15 Gr. 18 mm.

5



357 PISIDIA. Antioch. Titus (Caesar, 69-79). Ae. 9.15 Gr. 21.6 mm.

5



358 PISIDIA. Antioch. Septimius Severus (193-211). Ae. 5.73 Gr. 23 mm.

5



359 PISIDIA. Antioch. Julia Domna (Augusta, 193-217). Ae. 5.29 Gr. 24 mm.

5



360 PISIDIA. Antiochia. Julia Domna (193-211). Ae. 5 Gr. 24 mm.

5



361 PISIDIA. Antioch. Caracalla (198-217). Ae. 5.85 Gr. 22.6 mm.

5



362 PISIDIA. Antiochia. Geta (209-212). Ae. 5.64 Gr. 23.3 mm.

5



363 PISIDIA. Antioch. Elagabalus (218-222). Ae. 2.37 Gr. 17.8 mm.

5



364 PISIDIA. Antioch. Philip I the Arab (244-249). Ae. 6.42 Gr. 25 mm.

5



365 PISIDIA. Antioch. Philip I the Arab (244-249). Ae. 6.79 Gr. 25 mm.

5



366 PISIDIA. Antioch. Philip II (247-249). Ae. 10.17 Gr. 27 mm.

5



367 PISIDIA. Antioch. Philip II (247-249). Ae. 7.16 Gr. 24 mm.

5



368 PISIDIA. Antioch. Philip II (247-249). Ae. 6 Gr. 23 mm.

5



369 PISIDIA. Antioch. Gallienus (253-268). Ae. 4.61 Gr. 21.4 mm.

5



370 PISIDIA. Palaiopolis. Pseudo-autonomous issue after AD 147. 2.39 Gr. 15.1 mm.

5



371 PISIDIA. Selge. Hadrian (117-138). Ae. 9.41 Gr. 26 mm.

5



372 PAMPHYLIA. Attaleia. Trajan (98-117). Ae. 2.5 Gr. 17 . Mm.

5



373 PAMPHYLIA. Side. Hadrian (117-138). Ae. 5.14 Gr. 17.5 mm.

5



374 CARIA. Antioch ad Maeandrum. Time of Augustus to Tiberius (27 BC-37 AD). Ae. 2.68 Gr. 15 mm.

5



375 CILICIA. Seleucia ad Calycadnum. Commodus (177-192). Ae. 10.44 Gr. 25.7 mm.

5



376 CILICIA, Seleucia ad Calycadnum. Caracalla. 198-217 AD. 12.74 Gr. 29 mm. **5**



377 CILICIA. Seleucia ad Calycadnum. Valerian I (253-260). Ae. 15.56 Gr. 33.6 mm. **5**



378 CAPPADOCIA. Caesarea. Vespasian (69-79). Hemidrachm. 1.34 Gr. 14.2 mm. **5**



379 CAPPADOCIA. Caesarea. Vespasian (69-79). Hemidrachm. 1.31 Gr. 14.7 mm. **5**



380 CAPPADOCIA. Caesarea. Vespasian (69-79). Hemidrachm. 1.39 Gr. 14 mm. **5**



381 CAPPADOCIA. Caesarea (as Eusebeia). Vespasian (69-79). Hemidrachm. 1.58 Gr. 14 mm. **5**



382 CAPPADOCIA. Caesarea. Hadrian (117-138). Hemidrachm. Dated RY 4 (119/20). 1.6 Gr. 14.7 mm. **5**



383 CAPPADOCIA. Caesarea. Hadrian (117-138). Hemidrachm. Dated RY 4 (119/20). 1.26 Gr. 14 mm. **5**



384 CAPPADOCIA. Caesarea. Hadrian (117-138). Hemidrachm. Dated RY 4 (119/20).
1.38 Gr. 15.4 mm. **5**



385 CAPPADOCIA. Caesarea. Hadrian (117-138). Hemidrachm. Dated RY 4 (119/20).
1.49 Gr. 14.4 mm. **5**



386 CAPPADOCIA. Caesarea. Hadrian (117-138). Hemidrachm. Dated RY 4 (119/20).
1.61 Gr. 13.5 mm. **5**



387 CAPPADOCIA. Caesarea. Hadrian (117-138). Hemidrachm. Dated RY 4 (119/20).
1.52 Gr. 15.4 mm. **5**



388 CAPPADOCIA. Caesarea. Hadrian (117-138). Hemidrachm. Dated RY 4 (120/1).
1.61 Gr. 14.3 mm. **5**



389 CAPPADOCIA. Caesarea. Trajan (98-117). Didrachm. 6.65 Gr. 20 mm. **5**



390 CAPPADOCIA. Caesarea. Trajan (98-117). Didrachm. 6.5 Gr. 21 mm. **5**



391 CAPPADOCIA. Caesarea. Trajan (98-117). Ae. 3 Gr. 17.5 mm. **5**



392 CAPPADOCIA. Caesarea. Antoninus Pius (138-161). Ae. 3.56 Gr. 18.3 mm. **5**



393 CAPPADOCIA. Caesarea. Septimius Severus (193-211). Drachm. 2.88 Gr. 18 m. **5**



394 CAPPADOCIA. Caesarea. Julia Domna (Augusta, 193-217). Drachm. 3.20 Gr. 19 mm. **5**



395 CAPPADOCIA. Caesarea. Julia Domna (Augusta, 193-217). Drachm. 3.11 Gr. 18.4 mm. **5**



396 CAPPADOCIA. Caesarea. Caracalla (198-217). Drachm. 3.05 Gr. 17.3 mm. **5**



397 CAPPADOCIA. Caesarea. Caracalla (198-217). Ae. 10.96 Gr. 28.4 mm. **5**



398 CAPPADOCIA. Caesarea. Severus Alexander (222-235). Ae. 12.38 Gr. 27 mm. **5**



399 CAPPADOCIA. Caesarea. Severus Alexander (222-235). Ae. 12.63 Gr. 27 mm. **5**



400 CAPPADOCIA. Caesarea. Gordian III (238-244). Ae. 5.91 Gr. 23 mm. **5**



401 CAPPADOCIA. Caesarea. Pseudo-autonomous. Time of Trajan (98-117). Ae. 4.53 Gr. 17.3 mm. **5**



402 CAPPADOCIA. Tyana. Hadrian (117-138). Ae. 8.14 Gr. 22.5 mm. **5**



403 SELEUCIS & PIERIA. Antioch. Augustus (27 BC-14 AD). Ae As. 9.75 Gr. 29 mm. **5**



404 SELEUCIS & PIERIA. Antioch. Augustus (27 BC-14 AD). Ae. 9.5 Gr. 23 mm. **5**



405 SYRIA, Seleucis and Pieria, Antioch. Pseudo-autonomous. Time of Galba and Otho, 68-69. Ae. 4.01 Gr. 15 mm. **5**



406 SYRIA. Seleucis and Pieria. Antioch. Trajan (98-117). Ae. 14.5 Gr. 28 mm. **5**



407 SYRIA. Seleucis and Pieria. Antioch. Caracalla (198-217). Ae. 6.78 Gr. 21.6 mm. **5**



408 CYRRHESTICA. Beroea. Trajan (98-117). Ae. 11.88 Gr. 26 mm. **5**



409 CYRRHESTICA. Cyrrhus. Philip II (247-249). Ae. 16.5 Gr. 27 mm. **5**



410 SELEUCIS & PIERIA. Laodikeia ad Mare. Caracalla (197-217). Tetradrachm. 13.12 Gr. 26.1 mm. **5**



411 SELEUCIS & PIERIA. Antioch. Nero (54-68). Ae Semis. 7.11 Gr. 24.5 mm. **5**



412 SYRIA. Seleucis and Pieria. Antioch. Marcus Aurelius (Caesar, 139-161). Ae 7.22 Gr. 23 mm. **5**



413 SELEUCIS & PIERIA. Emesa. Antoninus Pius (138-161). Ae. 9.61 Gr. 23 mm. **5**



414 SELEUCIS AND PIERIA. Laodicea ad Mare. Caracalla (198-217). Tetradrachm. 10.96 Gr. 24.6 mm. **5**



415 SYRIA. Seleucia and Pieria. Antioch. Philip I 'the Arab' (244-249). Ae. 17 Gr. 29.4 mm. **5**



416 MESOPOTAMIA. Singara. Gordian III with Tranquillina (238-244). Ae. 21.3 Gr. 31 mm. **5**



417 MESOPOTAMIA. Edessa. Gordian III, with Abgar X Phraates (238-244). Ae. 4.68 Gr. 20 mm. **5**



418 MOESIA SUPERIOR. Viminacium. Philip II (247-249). Ae. 5.1 Gr. 21 mm. **5**



419 PHOENICIA. Berytus. Hadrian (117-138). Ae. 5.94 Gr. 21 mm. **5**



420 SPAIN. Colonia Patricia. Augustus 27-14 AD. Ae. 5.72 Gr. 22.5 mm. **5**



421 SPAIN. Carteia. After 44 BC. Ae. 8.47 Gr. 21.5 mm. **5**



422 EGYPT. Alexandria. Hadrian (117-138). Ae Obol. 5.7 Gr. 19.6 mm. **5**



423 EGYPT. Alexandria. Maximianus, first reign, 286-305. Tetradrachm. 7.94 Gr. 21 mm. **5**



424 EGYPT. Alexandria. Aurelian (270-275). BI Tetradrachm. 8.97 Gr. 21 mm. 5



425 EGYPT. Alexandria. Probus (276-282). BI Tetradrachm. 7.7 Gr. 19 mm. 5



426 PONTUS. Neocaesarea. Gordian III (238-244). Ae. 14.26 Gr. 30 mm. 5



427 PONTUS. Zela. Julia Domna (Augusta, 193-217). Ae. 15.27 Gr. 29 mm. 5



428 UNCERTAIN . Julia Domna (Augusta, 193-217). Ae. 4.62 Gr. 23 mm. 5



429 UNCERTAIN. Ae. 4.62 Gr. 23 mm. 5



430 SYRIA. Damascus. Caracalla (198-217). Ae. 4.62 Gr. 23 mm. 5



431 CAPPADOCIA, Tyana. Lucius Verus (161-169 AD) Ae. 4.62 Gr. 23 mm. 5



432 UNCERTAIN. Caracalla (197-217). Ae. Rare. 4.62 Gr. 23 mm. **5**



433 MACEDON. Uncertain (Philippi?). Augustus (27 BC-14 AD). Ae. 5.33 Gr. 17.4 mm. **5**



434 UNCERTAIN. HADRIAN (117-138). Ae. 4.62 Gr. 23 mm. **5**



435 MACEDON. Thessalonica. Divus Augustus with Divus Julius Caesar (Died AD 14 and 44 BC, respectively). Ae. 4.62 Gr. 23 mm. **5**



436 OCTAVIAN. (43-31) BC. AR Denarius. 3.13 Gr. 19.2 mm. **5**



437 C. MARIUS C. F. CAPITO. Serrate Denarius (81 BC). 3.24 Gr. 18.6 mm. **5**



438 MN. FONTEIUS C.F. Denarius (85 BC). 3.39 Gr. 20 mm. **5**



439 AUGUSTUS (27 BC-14 AD). Denarius. Lugdunum. 3.4 Gr. 20 mm. **5**



440 AUGUSTUS (27 BC-14 AD). Denarius. Lugdunum. 3.79 Gr. 18.6 mm. **5**



441 AUGUSTUS (27 BC-14 AD). Quinarius?. Lugdunum. 1.24 Gr. 17.5 mm. **5**



442 Augustus (27 BC - 14 AD). Ae. As. 10.53 Gr. 24 mm. **5**



443 TIBERIUS (14-37). Fourree Denarius. "Tribute Penny" type. Lugdunum. 2.73 Gr. 18.8 mm. **5**



444 VESPASIAN (69-79). Denarius. Rome. 3.07 Gr. 18.2 mm. **5**



445 VESPASIAN (69-79). Denarius. Rome. 3.15 Gr. 17.7 mm. **5**



446 VESPASIAN (69-79). Denarius. Rome. 3.20 Gr. 18 mm. **5**



447 VESPASIAN (69-79). Denarius. Rome. "Judaea Capta" issue. 2.94 Gr. 18 mm **5**



- 448 TITUS (Caesar, 69-79). Denarius. Antioch. "Judaea Capta" issue. 3.12 Gr. 17 mm. **5**



- 449 VESPASIAN (69-79). Denarius. Rome. 2.55 Gr. 21 mm. **5**



- 450 DOMITIAN (Caesar, 69-81). Denarius. Rome. 2.98 Gr. 18 mm. **5**



- 451 DOMITIAN (Caesar, 69-81). Sestertius. Rome. 24.41 Gr. 34.3 mm. **5**



- 452 TRAJAN (98-117). Denarius. Rome. 2.8 Gr. 19 mm. **5**



- 453 TRAJAN (98-117). Denarius. Rome. 3.42 Gr. 19 mm. **5**



- 454 TRAJAN (98-117). Denarius. Rome. 3.05 Gr. 19 mm. **5**



- 455 TRAJAN (98-117). Denarius. Rome. 3.13 Gr. 18 mm. **5**



456 TRAJAN (98-117). Denarius. Rome. 3.34 Gr. 20 mm.

5



457 TRAJAN (98-117). Denarius. Rome. 3.44 Gr. 18.4 mm.

5



458 TRAJAN (98-117). Denarius. Rome. 3.18 Gr. 18 mm.

5



459 TRAJAN (98-117). Denarius. Rome. 3.13 Gr. 18 mm.

5



460 TRAJAN (98-117). Denarius. Rome. 3 Gr. 18 mm.

5



461 TRAJAN (98-117). Denarius. Rome. 3.23 Gr. 18.3 mm.

5



462 HADRIAN (117-138). Denarius. Rome. 2.83 Gr. 19 mm.

5



463 HADRIAN (117-138). Denarius. Rome. 2.2 Gr. 17.6 mm.

5



464 HADRIAN (117-138). Denarius. Rome. 3.2 Gr. 18.6 mm.

5



465 HADRIAN (117-138). Denarius. Rome. 2.97 Gr. 17.6 mm.

5



466 HADRIAN (117-138). Denarius. Rome. 3.07 Gr. 19 mm.

5



467 HADRIAN (117-138). Denarius. Rome. 3.22 Gr. 16.3 mm.

5



468 HADRIAN (117-138). Denarius. Rome. 3.18 Gr. 17.8 mm.

5



469 HADRIAN (117-138). Denarius. Rome. 3.01 Gr. 17.7 mm.

5



470 HADRIAN (117-138). Denarius. Rome. 3.04 Gr. 18.2 mm.

5



471 HADRIAN (117-138). Denarius. Rome. 2.91 Gr. 18.6 mm.

5



472 HADRIAN (117-138). Semis. Rome. 4.25 Gr. 19.3 mm. **5**



473 HADRIAN (117-138). Semis. Rome. 4.08 Gr. 17.2 mm. **5**



474 HADRIAN (117-138). Semis. Rome. 3.44 Gr. 17.1 mm. **5**



475 HADRIAN (117-138). Semis. Rome. 3.4 Gr. 18 mm. **5**



476 HADRIAN (117-138). As. Rome. 6.42 Gr. 23.4 mm. **5**



477 ANTONINUS PIUS (138-161). Denarius. Rome 2.92 Gr. 18.3 mm. **5**



478 ANTONINUS PIUS (138-161). Denarius. Rome 3.36 Gr. 18.2 mm. **5**



479 ANTONINUS PIUS (138-161). Denarius. Rome 3.34 Gr. 17 mm. **5**



480 ANTONINUS PIUS (138-161). Denarius. Rome 3.17 Gr. 18.1 mm. **5**



481 ANTONINUS PIUS (138-161). Denarius. Rome 2.97 Gr. 18.7 mm. **5**



482 ANTONINUS PIUS (138-161). Denarius. Rome 2.97 Gr. 17.5 mm. **5**



483 ANTONINUS PIUS (138-161). Denarius. Rome 2.97 Gr. 18.1 mm. **5**



484 MARCUS AURELIUS (161-180). Denarius. Rome. 2.8 Gr. 18.5 mm. **5**



485 MARCUS AURELIUS (161-180). Denarius. Rome. 2.85 Gr. 18.1 mm. **5**



486 MARCUS AURELIUS (161-180). Denarius. Rome. 3 Gr. 17.7 mm. **5**



487 MARCUS AURELIUS (161-180). Denarius. Rome. 3.36 Gr. 16.6 mm. **5**



488 LUCIUS VERUS (161-169). Denarius. Rome. 3.1 Gr. 19.3 mm. **5**



489 MARCUS AURELIUS (161-180). Denarius. Rome. 3.14 Gr. 17 mm. **5**



490 LUCIUS VERUS (161-169). Sestertius. Rome. 26.16 Gr. 35.3 mm., **5**



491 DIVA FAUSTINA I (Died 140/1). Denarius. Rome. 3.07 Gr. 18 mm. **5**



492 FAUSTINA II (Augusta, 147-175). Denarius. Rome. 3.35 Gr. 19.2 mm. **5**



493 COMMODUS (177-192). Denarius. Rome. 3.18 Gr. 18 mm. **5**



494 SEPTIMIUS SEVERUS (193-211). Denarius. Laodicea ad Mare. 3.05 Gr. 18.1 m
m. **5**



495 SEPTIMIUS SEVERUS (193-211). Denarius. Emesa. 3.11 Gr. 18.4 mm. **5**



496 SEPTIMIUS SEVERUS (193-211). Denarius. Rome. 3 Gr 19.2 mm. **5**



497 SEPTIMIUS SEVERUS (193-211). Denarius. Emesa. 2.68 Gr. 19 mm. **5**



498 JULIA DOMNA (Augusta, 193-217). Denarius. Laodicea ad Mare. 2.38 Gr. 18.2 m m. **5**



499 JULIA DOMNA (Augusta, 193-217). Denarius. Rome. 3.22 Gr. 15.4 mm. **5**



500 JULIA DOMNA (Augusta, 193-217). Denarius. Laodicea ad Mare. 2.78 Gr . 20 m m. **5**



501 GETA (Caesar, 198-209). Denarius. Rome. 2.9 Gr. 19.1 mm. **5**



502 GETA (Caesar, 198-209). Denarius. 2.28 Gr. 18.4 mm. **5**



503 GETA (Caesar, 198-209). Denarius. Laodicea ad Mare. 3.34 Gr. 16.8 mm. **5**



504 CARACALLA (197-217). Denarius. Rome. 2.46 Gr. 19.8 mm.

5



505 CARACALLA (197-217). Denarius. Rome. 3.59 Gr. 19.1 mm.

5



506 CARACALLA (198-217). Denarius. Rome. 3.24 Gr. 18.7 mm.

5



507 CARACALLA (197-217). Denarius. Rome. 3.1 Gr. 18.7 mm.

5



508 CARACALLA (198-217). Denarius. Rome. 2.92 Gr. 19.1 mm.

5



509 CARACALLA (198-217). Denarius. Rome. 2.96 Gr. 18.7 mm.

5



510 CARACALLA (197-217). Denarius. Rome. 2.3 Gr. 19.7 mm.

5



511 PLAUTILLA (Augusta, 202-205). Denarius. Rome. 3.08 Gr. 18.6 mm.

5



512 ELAGABALUS (218-222). Denarius. Rome. 2.47 Gr. 20 mm. **5**



513 JULIA SOEMIAS (Augusta, 218-222). Denarius. Rome. 2.47 Gr. 19.3 mm. **5**



514 JULIA MAMAEA (Augusta, 222-235). Denarius. Rome. 2.75 Gr. 21.4 mm. **5**



515 SEVERUS ALEXANDER (222-235). Denarius. Rome. 2.9 Gr. 19 mm. **5**



516 MAXIMINUS THRAX (235-238). Denarius. Gold-framed pendant. Rome. 3.54 Gr. 27.1 mm. **5**



517 GORDIAN III (238-244). Antoninianus. Antioch. 2.58 Gr. 22 mm. **5**



518 GORDIAN III (238-244). Antoninianus. Antioch. 2.94 Gr. 23 mm. **5**



519 GORDIAN III (238-244). Antoninianus. Rome. 4.6 Gr. 23.7 mm. **5**



520 GORDIAN III (238-244). Antoninianus. Rome. 4.39 Gr. 24 mm. **5**



521 GORDIAN III (238-244). Antoninianus. Antioch. 4.08 Gr. 23.4 mm. **5**



522 GORDIAN III (238-244). Antoninianus. Rome. 4.2 Gr. 26 mm. **5**



523 GORDIAN III (238-244). Antoninianus. Antioch. 4.01 Gr. 23 mm. **5**



524 GORDIAN III (238-244). Antoninianus. Rome. 2.9 Gr. 25 mm. **5**



525 GORDIAN III (238-244). Antoninianus. Rome. 3.12 Gr. 22 mm. **5**



526 GORDIAN III (238-244). Antoninianus. Antioch. 5 Gr. 22.6 mm. **5**



527 GORDIAN III (238-244). Antoninianus. Rome. 4.38 Gr. 23 mm. **5**



528 GORDIAN III (238-244). Antoninianus. Rome. 4.68 Gr. 22 mm. **5**



529 GORDIAN III (238-244). Antoninianus. Rome. 4.45 Gr. 23 mm. **5**



530 GORDIAN III (238-244). Antoninianus. Rome. 5.14 Gr. 22.6 mm. **5**



531 GORDIAN III (238-244). Antoninianus. Rome. 3.78 Gr. 22 mm. **5**



532 GORDIAN III (238-244). Antoninianus. Rome. 5 Gr. 25 mm. **5**



533 GORDIAN III (238-244). Antoninianus. Rome. 4.29 Gr. 24 mm. **5**



534 GORDIAN III (238-244). Antoninianus. Rome. 3.61 Gr. 24 mm. **5**



535 GORDIAN III (238-244). Antoninianus. Antioch. 3.49 Gr. 24 mm. **5**



536 GORDIAN III (238-244). Antoninianus. Antioch. 4.43 Gr. 21.5 mm. **5**



537 GORDIAN III (238-244). Antoninianus. Rome. 5.3 Gr. 24 mm. **5**



538 GORDIAN III (238-244). Antoninianus. Rome. 4.49 Gr. 22.4 mm. **5**



539 GORDIAN III (238-244). Antoninianus. Rome. 4.21 Gr. 23.5 mm. **5**



540 GORDIAN III (238-244). Antoninianus. Rome. 3.23 Gr. 22.4 mm. **5**



541 GORDIAN III (238-244). Antoninianus. Antioch. 3.68 Gr. 22 mm. **5**



542 OTACILIA SEVERA (Augusta, 244-249). Antoninianus. Rome. 3.07 Gr. 23 mm. **5**



543 PHILIP I 'THE ARAB' (244-249). Antoninianus. Rome. 4.15 Gr. 25 mm. **5**



544 PHILIP I 'THE ARAB' (244-249). Antoninianus. Rome. 3.8 Gr. 22 mm. **5**



545 PHILIP II (Caesar, 244-247). Antoninianus. Rome. 3.22 Gr. 23 mm. **5**



546 PHILIP I 'THE ARAB' (244-249). Sestertius. Rome. 16.86 Gr. 29 mm. **5**



547 PHILIP I 'THE ARAB' (244-249). Antoninianus. Antioch. 3.44 Gr. 22 mm. **5**



548 PHILIP I 'THE ARAB' (244-249). Antoninianus. Antioch. 3.55 Gr. 23 mm. **5**



549 PHILIP I 'THE ARAB' (244-249). Antoninianus. Antioch. 4.01 Gr. 22.4 mm. **5**



550 PHILIP I 'THE ARAB' (244-249). Antoninianus. Rome. 3.66 Gr. 22 mm. **5**



551 PHILIP I 'THE ARAB' (244-249). Antoninianus. Rome. 3.76 Gr. 22.6 mm. **5**



552 PHILIP I 'THE ARAB' (244-249). Antoninianus. Rome. 3.56 Gr. 23 mm. **5**



553 PHILIP I 'THE ARAB' (244-249). Antoninianus. Rome. 4.31 Gr. 22.6 mm. **5**



554 PHILIP I 'THE ARAB' (244-249). Antoninianus. Rome. 3.79 Gr. 23 mm. **5**



555 PHILIP I 'THE ARAB' (244-249). Antoninianus. Rome. 4.54 Gr. 23 mm. **5**



556 PHILIP I THE ARAB (244–249). Antoninianus. Rome. 4.7 Gr. 22 mm. **5**



557 PHILIP I THE ARAB (244–249). Antoninianus. Rome. 4.38 Gr. 22.6 mm. **5**



558 PHILIP I 'THE ARAB' (244-249). Antoninianus. Rome. 3.83 Gr. 23 mm. **5**



559 PHILIP II (Caesar, 244-247). Antoninianus. Rome. 3.88 Gr. 23 mm. **5**



560 PHILIP I 'THE ARAB' (244-249). Antoninianus. Rome. 4.21 Gr. 24 mm. **5**



561 HERENNIA ETRUSCILLA (Augusta, 249-251). Antoninianus. Rome. 3.19 Gr. 22 mm. **5**



562 HERENNIA ETRUSCILLA (Augusta, 249-251). Antoninianus. Rome. 3.21 Gr. 23 mm. **5**



563 TRAJANUS DECIUS (249-251). Antoninianus. Rome. 3.39 Gr. 21.5 mm. **5**



564 TRAJANUS DECIUS (249-251). Antoninianus. Rome. 4.71 Gr. 24 mm. **5**



565 TREBONIANUS GALLUS (252-253). Antoninianus. Antioch. 3.4 Gr. 24 mm. **5**



566 TRAJANUS DECIUS (249-251). Antoninianus. Rome. 2.68 Gr. 21.4 mm. **5**



567 TRAJANUS DECIUS (249-251). Antoninianus. Rome. 2.68 Gr. 22.8 mm. **5**



568 TREBONIANUS GALLUS (252-253). Antoninianus. Mediolanum. 3.17 Gr. 23.5 mm. **5**



569 VALERIAN I (253-260). Antoninianus. Viminacium. 3.62 Gr. 22 mm. **5**



570 GALLIENUS (253-268). Antoninianus. Antioch. 2.77 Gr. 21.4 mm. **5**



571 GALLIENUS (253-268). Antoninianus. Rome. 3.47 Gr. 20 mm. **5**



572 SALONINA (Augusta, 254-268). Antoninianus. Antioch. 3.35 Gr. 21.3 mm. **5**



573 QUIETUS (Usurper, 260-261). Antoninianus. Samosata. 4.14 Gr. 22 mm. **5**



574 POSTUMUS (260-269). Antoninianus. Treveri. 2.57 Gr. 20 mm. **5**



575 CLAUDIUS II GOTHICUS (268-270). Antoninianus. Rome. 3.85 Gr. 19.5 mm. **5**



576 AURELIAN (270-275). Denarius. 2.93 Gr. 19 mm.

5



577 AURELIAN (270-275). Antoninianus. Cyzicus. 4.13 Gr. 20.6 mm.

5



578 SEVERINA (Augusta, 270-275). Antoninianus. Siscia. 3.83 Gr. 22 mm.

5



579 SEVERINA (Augusta, 270-275). Antoninianus. Siscia. 4.3 Gr. 21.6 mm.

5



580 NUMERIAN (283-284). Antoninianus. Cyzicus. 3.63 Gr. 21 mm.

5



581 DIOCLETIAN (284-305). Follis. Ticinum. 8.27 Gr. 26.4 mm.

5



582 DIOCLETIAN (284-305). Follis. Antioch. 8.48 Gr. 28 mm.

5



583 MAXIMIANUS HERCULIUS (First reign, 286-305). Argenteus. Ticinum. 1.69 Gr. 19.5 mm.

5



584 GALERIUS MAXIMIANUS (Caesar, 293-305). Follis. 7.84 Gr. 26 mm. **5**



585 MAXIMINUS II DAIA (310-313). Follis. Antioch. 6.19 Gr. 23 mm. **5**



586 MAXIMIANUS HERCVLIUS (First reign, 286-305). Follis. Cyzicus. 6.19 Gr. 24.4 m m. **5**



587 MAXIMIANUS HERCVLIUS (286-305). Antoninianus. Antioch. 4.28 Gr. 21.4 mm. **5**



588 CONSTANTINE I 'THE GREAT' (307/10-337). Follis. Nicomedia. 3.53 Gr. 20 mm. **5**



589 CONSTANTINE I 'THE GREAT' (307/310-337). Follis. 3.3 Gr. 20.6 mm. **5**



590 CONSTANTINE I 'THE GREAT' (307/10-337). Follis. Constantinople. 3.13 Gr. 19 mm. **5**



591 CONSTANTINE I 'THE GREAT' (307/10-337). Follis. Constantinople. 2.8 Gr. 19 m m. **5**



592 CONSTANS (337-350). Follis. Cyzicus. 5.29 Gr. 21 mm. **5**



593 LICINIUS I (308-324). Follis. Cyzicus. 3.19 Gr. 19.4 mm. **5**



594 CRISPUS (Caesar, 316-326). Follis. Londinium. 2.67 Gr. 18.8 mm. **5**



595 HELENA (Augusta, 324-328/30). Follis. 1.66 Gr. 17.2 mm. **5**



596 ANONYMOUS. Time of Maximinus II (310-313). Follis. Antioch. 1.86 Gr. 16 mm. **5**



597 ANONYMOUS. Time of Maximinus II (310-313). Follis. Antioch. 1.91 Gr. 17 mm. **5**



598 DECENTIUS (Caesar, 350/1-353). Ae. Treveri. 6.75 Gr. 25 mm. **5**



599 JULIAN II APOSTATA (360-363). Ae. Nicomedia. 7.48 Gr. 28 mm. **5**



600 GRATIAN (367-383). Follis. Kyzikos. 3.04 Gr. 18.6 mm.

5



601 GRATIAN (367-383). Follis. Antioch. 5.16 Gr. 24.5 mm.

5



602 HONORIUS (393-423). Follis. Antiochia. 1.54 Gr. 13.6 mm.

5



603 HONORIUS (393-423). Follis. Ae. 4.45 Gr. 22 mm.

5



604 ANASTASIUS I (491-518). Follis. Constantinople. 15.65 Gr. 39 mm.

5



605 ANASTASIUS I (491-518). Follis. Constantinople. 18.23 Gr. 35.3 mm.

5



606 JUSTINIAN I (527-565). GOLD Solidus. Constantinople. 4.32 Gr. 20 mm.

5



607 JUSTINIAN I (527-565). Follis. Constantinople. 22.56 Gr. 41.6 mm.

5



608 JUSTINIAN I (527-565). Follis. Constantinople. 22 Gr. 37.5 mm. **5**



609 JUSTINIAN I (527-565). Follis. Constantinople. 19.2 Gr. 44.6 mm. **5**



610 JUSTINIAN I (527-565). Follis. Constantinople. 15.83 Gr. 30 mm. **5**



611 JUSTINIAN I (527-565). Follis. Nicomedia. 17.81 Gr. 34 mm. **5**



612 JUSTINIAN I (527-565). Follis. Nicomedia. 16.22 Gr. 31 mm. **5**



613 JUSTINIAN I (527-565). Follis. Nicomedia. 20.85 Gr. 44 mm. **5**



614 JUSTINIAN I (527-565). Follis. Nicomedia. 14.43 Gr. 30 mm. **5**



615 JUSTINIAN I (527-565). Follis. Theopoulis (Antioch). 21.86 Gr. 39 mm. **5**



616 JUSTIN II (565-578). Half Follis. Thessalonica. 5.82 Gr. 21 mm. **5**



617 TIBERIUS II CONSTANTINE (578-582). Follis. Antioch. 12.63 Gr. 31 mm. **5**



618 TIBERIUS II CONSTANTINE (578-582). Follis. Constantinople. 12.21 Gr. 31.4 mm. **5**



619 TIBERIUS II CONSTANTINE (578-582). Half Follis. Constantinople. 3.61 Gr. 19.5 mm. **5**



620 MAURICE TIBERIUS (582-602). Follis. Constantinople. 12.16 Gr. 34 mm. **5**



621 MAURICE TIBERIUS (582-602). Follis. Constantinople. 12.14 Gr. 30 mm. **5**



622 MAURICE TIBERIUS (582-602). Follis. Nicomedia. 12.15 Gr. 30.6 mm. **5**



623 MAURICE TIBERIUS (582-602). Follis. Nicomedia. 10.6 Gr. 34 mm. **5**



624 MAURICE TIBERIUS (582-602). Follis. Antioch. 12 Gr. 29 mm. **5**



625 MAURICE TIBERIUS (582-602). Follis. Antioch. 12.25 Gr. 30 mm. **5**



626 MAURICE TIBERIUS (582-602). Follis. Antioch. 11.26 Gr. 29.5 mm. **5**



627 PHOCAS with LEONTIA (602-610). Follis. Theoupolis (Antioch). 10.78 Gr. 31 mm. **5**



628 PHOCAS with LEONTIA (602-610). Follis. Theoupolis (Antioch). 10.73 Gr. 26 mm. **5**



629 PHOCAS (602-610). Follis. Antioch. 10.64 Gr. 30 mm. **5**



630 PHOCAS (602-610). Follis. Nicomedia. 11.13 Gr. 31 mm. **5**



631 CONSTANS II with CONSTANTINE IV (641-668). Hexagram. 4.79 Gr. 20 mm. **5**



632 HERACLIUS (610-641). Follis. Constantinople. 10.74 Gr. 18.8 mm. **5**



633 HERACLIUS (610-641). Follis. Constantinople. 10.11 Gr. 34 mm. **5**



634 HERACLIUS with HERACLIUS CONSTANTINE (610-641). GOLD Solidus. Constantinople. 4.50 Gr. 20 mm. **5**



635 CONSTANS II, CONSTANTINE IV, HERACLIUS, and TIBERIUS, 641-668 AD. Ae. 3.14 Gr. 21.6 mm. **5**



636 CONSTANTINE V COPRONYMUS, with LEO IV and LEO III (741-775). Half Follis. 2.11 Gr. 18 mm. **5**



637 LEO IV THE KHAZAR, with Constantine VI (775-780). Half Follis. 3.31 Gr. 21 mm. **5**



638 LEO VI THE WISE (886-912). Follis. Constantinople. 7.1 Gr. 25 mm. **5**



639 LEO VI THE WISE (886-912). Follis. Constantinople. 8.29 Gr. 27 mm. **5**



640 LEO VI THE WISE (886-912). Follis. Constantinople. 7.48 Gr. 26 mm. **5**



641 CONSTANTINE VII PORPHYROGENITUS(913-959) and ROMANUS I LECAPENUS (920-944). Follis. Constantinople. 4.35 Gr. 25 mm. **5**



642 CONSTANTINE VII PORPHYROGENITUS(913-959) and ROMANUS I LECAPENUS (920-944). Follis. Constantinople. 7.62 Gr. 25 mm. **5**



643 CONSTANTINE VII PORPHYROGENITUS(913-959) and ROMANUS I LECAPENUS (920-944). Follis. Constantinople. 3.48 Gr. 22 mm. **5**



644 CONSTANTINE VII PORPHYROGENITUS(913-959) and ROMANUS I LECAPENUS (920-944). Follis. Constantinople. 6.83 Gr. 28 mm. **5**



645 ANONYMOUS FOLLES. Class A2. Attributed to Basil II & Constantine VIII (976-1025). Follis. Constantinople. 12.01 Gr. 32 mm. **5**



646 ANONYMOUS FOLLES. Class A2. Attributed to Basil II & Constantine VIII (976-1025). Follis. Constantinople. 11.82 Gr. 29 mm. **5**



647 ANONYMOUS FOLLES. Class A2. Attributed to Basil II & Constantine VIII (976-1025). Follis. Constantinople. 9 Gr. 27.3 mm. **5**



648 ANONYMOUS FOLLES. Class A2. Attributed to Basil II & Constantine VIII (976-1025). Follis. Constantinople. 9.55 Gr. 29.5 mm. **5**



649 ANONYMOUS FOLLES. Class A2. Attributed to Basil II & Constantine VIII (976-1025). Follis. Constantinople. 7.38 Gr. 28 mm. **5**



650 ANONYMOUS FOLLES. Class A2. Attributed to Basil II & Constantine VIII (976-1025). Follis. Constantinople. 10.3 Gr. 32 mm. **5**



651 ANONYMOUS FOLLES. Class A2. Attributed to Basil II & Constantine VIII (976-1025). Follis. Constantinople. 11 Gr. 26 mm. **5**



652 ANONYMOUS FOLLES. Class C. Attributed to Michael IV (1034-1041). 7.95 Gr. 27 mm. **5**



653 ANONYMOUS FOLLES. Class C. Attributed to Michael IV (1034-1041). 9.11 Gr. 29 mm. **5**



654 ANONYMOUS FOLLES. Class C. Attributed to Michael IV (1034-1041). 8.58 Gr. 29 mm. **5**



655 ANONYMOUS FOLLES. Class D. Attributed to Constantine IX (1042-1055). 5.65 Gr. 25 mm. **5**



656 CONSTANTINE X Ducas and Eudocia AD 1059-1067. Constantinople. 7.97 Gr. 30 mm. **5**



657 CONSTANTINE X Ducas and Eudocia AD 1059-1067. Constantinople. 7.77 Gr. 32 mm. **5**



658 CONSTANTINE X Ducas and Eudocia AD 1059-1067. Constantinople. 13.62 Gr. 32 mm. **5**



659 CONSTANTINE X Ducas and Eudocia AD 1059-1067. Constantinople. 12.17 Gr. 29 mm. **5**



660 ANONYMOUS FOLLES. Class G. Attributed to Romanus IV (1068-1071). Constantinople. 11.45 Gr. 28 mm. **5**



661 ANONYMOUS FOLLES. Class G. Attributed to Romanus IV (1068-1071). Constantinople. 9.14 Gr. 29 mm. **5**



662 MICHAEL VII DUCAS (1071-1078). 2/3 Miliaresion. Constantinople. 1.31 Gr. 19 mm. **5**



663 MICHAEL VII DUCAS (1071-1078). 2/3 Miliaresion. Constantinople. 1.22 Gr. 20 mm. **5**



664 MICHAEL VII DUCAS (1071-1078). Follis. Constantinople. 6.6 Gr. 26 mm. **5**



665 ANONYMOUS FOLLES. Class I. Attributed to Nicephorus III Botaniates (1078-1081). 4.86 Gr. 25 mm. **5**



666 ANONYMOUS FOLLES. Class I. Attributed to Nicephorus III Botaniates (1078-1081). 4.52 Gr. 27 mm. **5**



667 ANONYMOUS FOLLES. Class I. Attributed to Nicephorus III Botaniates (1078-1081). 3.85 Gr. 22 mm. **5**



668 ANONYMOUS FOLLES. Class I. Attributed to Nicephorus III Botaniates (1078-1081). 5.47 Gr. 26 mm. **5**



669 EMPIRE OF THESSALONICA. Manuel Comnenus-Ducas (Despot, 1230-1237). Trachy. 4.2 Gr. 26.7 mm. **5**



670 EMPIRE OF THESSALONICA. John Comnenus-Ducas (1237-1242). Trachy. 3.6 Gr. 26.4 mm. **5**



671 MICHAEL VIII PALAEOLOGUS (1261-1282). Trachy. Constantinople. 2.59 Gr. 27 mm. **5**



672 EMPIRE OF NICAEA. John III Ducas-Vatazes (1222-1254). GOLD Hyperpyron. Magnesia. 4.40 Gr. 28 mm. **5**



673 EMPIRE OF NICAEA. John III Ducas (Vatazes) (1222-1254). Tetarteron. Magnesia. 3.07 Gr. 15 mm. **5**



674 EMPIRE OF NICAEA. John III Ducas (Vatazes) (1222-1254). Tetarteron. Magnesia. 6.93 Gr. 25 mm. **5**



675 UNCERTAIN. Ae. 2.54 Gr. 14 mm. **5**



676 FRANCE. Provence. Valence. Anonymous Bishops (12th century). AR Denier. 0.83 Gr. 18 mm. **5**



677 CRUSADERS. Antioch. Bohémond III (1163-1201). BI Denier. 0.91 Gr. 17 mm. **5**



678 ARMENIA. Levon III (1303/5-1307). Takvorin. Sis. 2.2 Gr. 20.3 mm. **5**



679 GERMANY. Uncertain. Ae. 1.68 Gr. 25 mm. **5**



680 GERMANY. Ae . 1.68 Gr. 25.4 mm. **5**



681 ARMENIA. Levon III (1303/5-1307). Takvorin. Sis. 2.13 Gr. 22 mm. **5**



682 ARMENIA. Levon III (1303/5-1307). Takvorin. Sis. 2.64 Gr. 20 mm. **5**



683 ARMENIA. Levon III (1303/5-1307). Takvorin. Sis. 2.17 Gr. 21 mm. **5**



684 ITALY. Venice Francesco Donà doge LXXIX, (1545-1553 AD). 1.0 Gr. 18 mm. **5**



685 ITALY. Venice. Bartolomeo Gradenigo (1339-1342). Grosso. 1.59 Gr. 19 mm. **5**



686 ITALY. Venice. Bartolomeo Gradenigo (1339-1342). Grosso. 1.83 Gr. 19 mm. **5**



687 ITALY. Venice. Bartolomeo Gradenigo (1339-1342). Grosso. 2.06 Gr. 20 mm. **5**



688 CRUSADERS. Antioch. Tancred (Regent, 1101-1103 & 1104-1112). Follis. 4.67 Gr. 24.2 mm. **5**



689 CRUSADERS. Antioch. Anonymous (12th-13th centuries). Ae 2.6 Gr. 23 mm., **5**



690 HOLY ROMAN EMPIRE. Maria Theresia (1740-1780). Taler (1780-SF). 28 Gr. 40 mm. **5**



691 HOLY ROMAN EMPIRE. Maria Theresia (1740-1780). Taler (1780-SF). 28 Gr. 40.8 mm. **5**



692 ITALY. Venice PB Theriac Capsule Seal. Circa 16th century. 19.07 Gr. 37.2 mm. **5**



693 ITALY. Venice PB Theriac Capsule Seal. Circa 17th century. 7.65 Gr. 24 mm. **5**



694 HOLY ROMAN EMPIRE. Leopold I (1657-1705). 3 Kreuzer. 1.56 Gr. 22 mm. **5**



695 HOLY ROMAN EMPIRE. Leopold I (1657-1705). 3 Kreuzer . 1.6 Gr. 21.5 mm. **5**



696 HOLY ROMAN EMPIRE. Leopold I (1657-1705). 3 Kreuzer. 1.7 Gr. 21.5 mm. **5**



697 HOLY ROMAN EMPIRE. Leopold I (1657-1705). 3 Kreuzer. 1.49 Gr. 21 mm. **5**



698 HOLY ROMAN EMPIRE. Leopold I (1657-1705). 3 Kreuzer. 1.77 Gr. 22 mm. **5**



699 HOLY ROMAN EMPIRE. Leopold I (1657-1705). 6 Kreuzer (1667). Kremnitz. 2.76 Gr. 26 mm. **5**



700 HOLY ROMAN EMPIRE. Leopold I (1658-1705). 3 Kreuzer . 1.68 Gr. 23 mm. **5**



701 HOLY ROMAN EMPIRE. Leopold I (Emperor, 1658-1705). 3 Kreuzer. 1.77 Gr. 22 mm. **5**



702 HOLY ROMAN EMPIRE. Leopold I (1657-1705). 3 Kreuzer. 1.74 Gr. 21 mm. **5**



703 AUSTRIA. Leopold V (Archduke, 1619-1632). 10 Kreuzer. 3.8 Gr. 29 mm. **5**



704 AUSTRIA. Holy Roman Empire. Leopold I (Emperor, 1658-1705). 6 Kreuzer. 3.12 Gr. 26 mm. **5**



705 HUNGARY. Leopold I (1657-1705). 6 Kreuzer. 3.22 Gr. 26 mm. **5**



706 HUNGARY. Leopold I (1657-1705). 6 Kreuzer. 3.37 Gr. 27 mm. **5**



707 AUSTRIA. Holy Roman Empire. Habsburg. Leopold I (Emperor, 1658-1705). 6 Kreuzer. 3.47 Gr. 27 mm. **5**



708 AUSTRIA. Leopold V (Archduke, 1619-1632). 10 Kreuzer . 4.39 Gr. 30 mm. **5**



709 AUSTRIA. Leopold I (1658-1705). 15 Kreuzer (1661). 6.23 Gr. 30 mm. **5**



710 AUSTRIA. Holy Roman Empire. Habsburg. Leopold I (Emperor, 1658-1705). 15 Kreuzer. 6.25 Gr. 28 mm. **5**



711 AUSTRIA. Leopold I (1658-1705). 15 Kreuzer (1662). 6.01 Gr. 29 mm. **5**



712 POLAND. Sigismund III Vasa (1587-1632). Ort (1617). 6.26 Gr. 29 mm. **5**



713 SILESIA. Duchy of Liegnitz-Brieg-Wohlau, Christian, 6 Kreuzer. 3.01 Gr. 25 mm. **5**



714 AUSTRIA. Holy Roman Empire. Leopold I, 1658-1705 AD. 1.56 Gr. 21.6 mm. **5**



715 HOLY ROMAN EMPIRE. Karl VI (1711-1740). 3 Kreuzer. 1.78 Gr. 22 mm. **5**



716 FRANCE. Louis XIV (1643-1715). 1/12 Écu (1660-&). Aix-en-Provence. 2.09 Gr. 20.5 mm. **5**



717 GERMANY. Silesia-Liegnitz-Brieg (Duchy). Ludwig IV AR 15 Kreuzer. 5.87 Gr. 29 mm. **5**



718 SWITZERLAND. 1 Francs (1850-A). Paris. 4.41 Gr. 23 mm., **5**



719 SPAIN KINGDOM. Francisco Franco 5 Pesetas 1957 BA (Barcelona). 5.79 Gr. 23 mm. **5**



720 BRITISH, Elizabeth II (1952-2022 AD) Two pence. Dated 1971. 7 Gr. 26 mm. **5**



721 ZAIRE. 10 Makutas 1973. 9 Gr. 28 mm. **5**



722 SPAIN KINGDOM. Juan Carlos I 25 Pesetas 1975. 8.46 Gr. 26.7 mm. **5**



723 BELGIUM. 50 Centimes. 1979. 2.81 Gr. 19 mm. **5**



724 FRANCE. Ve République, 1958-. 10 Francs 1976. Mathieu. 10.07 Gr. 26 mm. **5**



725 BELGIUM. Boudewijn/Baudouin 5 Frank 1978. 6 Gr. 24 mm. **5**



726 Great Britain 2 New Pence 1980. 7.1 Gr. 26 mm. **5**



727 BELGIUM. 8.35 Gr. 26 mm. **5**



728 FRANCE. Republic platinum Proof Piedfort 2 Francs 1979 . 7.56 Gr. 26 mm. **5**



729 Deutschland 2 Deutsche Mark 1982. 6.95 Gr. 26.7 mm. **5**



730 Contemporary coins. 1987. Juan Carlos I. 500 pesetas. 12.11 Gr. 28 mm. **5**



731 Elizabeth II. 1952-9999. London. Piedfort des 1 Pound 1983 . 9.49 Gr. 22.4 mm. **5**



732 Ireland 1 Pound 1990. 9.94 Gr. 31 mm. **5**



733 Ireland 10 Pound 1993. 5.51 Gr. 22 mm. **5**



734 ISLAMIC. Mongols. Ilkhanids. Mahmud Ghazan I (AH 694-703 / 1295-1304 AD). Dirham. 3.87 Gr. 25 mm. **5**



735 ISLAMIC. Coins. Dirham. 3.93 Gr. 25.6 mm. **5**



736 ISLAMIC. Coins. Dirham. 3.91 Gr. 25. mm.

5



737 ISLAMIC. Anatolia & al-Jazira (Post-Seljuk). Danishmendids (Sivas). Malik Muhammad (AH 528-536 / 1134-1142). Ae Dirham. 3.77 Gr. 23.4 mm.

5



738 ISLAMIC. Seljuks. Rum. Rukn al-Din Qilich Arslan IV Kay Khusraw (Sole reign over Rum Seljuk, AH 659-664 / 1261-1265 AD). Dirham. 2.88 Gr. 22 mm.

5



739 ISLAMIC. Seljuks. Ae. 3.45 Gr. 21 mm.

5



740 ISLAMIC. Mangır. Ae. 8.2 Gr. 21 mm.

5



741 OTTOMAN EMPIRE. Mustafa II (AH 1106-1115 / 1695-1703 AD). Para. Konstantiniye (Constantinople). Dated Year 1106 (AD 1695). 9.73 Gr. 29 mm.

5



742 France. Bronze cast decoration medal. Medieval queen profile. 202 Gr. 10.66 mm.

5



743 France. Bronze cast decoration medal. Medieval king profile. 200+ Gr. 111.3 mm.5



744 Soviet. Space Medal CCCP Poland Flight Rocket 1978 SOYUZ-30. A very soviet style medal with great tone and condition. 200+ Gr. 79.6 mm. **5**



745 Belgium. 1969 Cast iron for a Belgium company SIMCA located in Nivelles. 200+ Gr. 92.7 mm. **5**



746 France. Bronze medal of François Athanase Charette de La Contrie, he was a French soldier and royalist general in the Vendée War. 200+ Gr. 16.7 mm. **5**



747 Belgium. Bronze medal for the music competition. Signature below. 196.69 Gr. 87 mm. **5**



748 Belgium. 1856. Bronze medal of Leopold I: 25th Belgium National's Day since 1831. 182.36 Gr. 75 mm. **5**



749 Belgium. 1930 Bronze medal for world exposition in Antwerp: Colonies navigation art flamand. 166.68 Gr. 85 mm. **5**



750 Belgium. 1960 bronze medal for King Baudouin. 158.45 Gr. 70 mm. **5**



751 Belgium. Bronze medal for famous Belgian musician Jef Denyn. 154.57 Gr. 75.5 mm. **5**



752 Belgium. 1940. Bronze medal for Centennial Royal Library of Belgium. 149.32 Gr. 70 mm. **5**



753 Belgium. 1930 Bronze medal for world exposition in Antwerp: Colonies navigation art flamand. 149.8 Gr. 85.3 mm. **5**



754 Belgium. 1952 Bronze medal tribute to the director of the Belgian general insurance company on life. 138.5 Gr. 70 mm. **5**



755 Netherlands. 1883 Bronze medal for the international colonial and export trade exhibition in Amsterdam. 134 Gr. 70 mm. **5**



756 . Bronze Russia medal Tobolsk 400 years anniversary 1587-1987 Soviet medal. 130 Gr. 61 mm. **5**



757 Belgium. 1830-1930. Bronze medal "The Kings of Belgium". 126.7 Gr. 70.5 mm. **5**



758 Belgium. 1934 Bronze medal royal Leopold III "I give myself to the whole Belgium". 127 Gr. 70 mm. **5**



759 Belgium. 1830-1905. Bronze medal of Leopold II. 126.63 Gr. 70 mm. **5**



760 Belgium. 1943 Bronze medal. The Bruxelles credit union president Albert Vleming x. 122.18 Gr. 84 mm. **5**



761 . Bronze medal "Belgium Members of the scientific society in Belgium". 116.56 Gr. 68 mm. **5**



762 .1928 Belgium Bronze medal. Colonel Smeyers to his collaborating officers and friends.[1] 116 Gr. 76 mm. **5**



763 Belgium.1928 Bronze medal. Colonel Smeyers to his collaborating officers and friends.[2] 116.04 Gr. 75.7 mm. **5**



764 Belgium. 1881-1922. Silver medal "Navigation of the Brussels Chamber of Commerce". 107.11 Gr. 65.5 mm. **5**



765 Belgium. 1914-1918 Bronze medal for soldier of World War I. [1] 105.35 Gr. 65.2 mm. **5**



766 Belgium. 1914-1918 Bronze medal for soldier of World War I. [2] 103.61 Gr. 65.4 mm. **5**



767 Belgium. 1914-1918 Bronze medal for soldier of World War I. [3] 100.27 Gr. 65 m m. **5**



768 England. 1939-1945 Bronze medal "Passive defense of World War II". 94.87 Gr. 59 mm. **5**



769 France. 1980 Bronze medal "Maritime liberty". 90.08 Gr. 54 mm. **5**



770 Belgium. 1923 Silver plated bronze medal "Visit of their majesties the king and queen of Spain". 87.29 Gr. 80.7 mm. **5**



771 Belgium. 1938 Bronze medal "Universal and International Exposition in Brussels". 86.26 Gr. 59 mm. **5**



772 France. 1900 Bronze medal "The exposition in Paris". 76.35 Gr. 54 mm. **5**



773 Belgium. 1907 Bronze medal "International exposition". Leopold II. 72.24 Gr. 60 mm. **5**



774 Saudi. 1985 Bronze Medal of the sixtieth anniversary of the university. 68.88 Gr. 59 mm. **5**



775 Soviet. Bronze medal "Space for Children of CCCP". 68.8 Gr. 50.4 mm. **5**



776 France. Bronze medal "Force courage preparation for military". 64.13 Gr. 50 mm. **5**



777 Belgium. Silver medal city Anderlecht. 63.49 Gr. 55 mm. **5**



778 Belgium. Bronze souvenir medal of Brussels. 59.07 Gr. 51.4 mm. **5**



779 Belgium. Bronze medal "International exposition in Antwerp". 58.93 Gr. 66.8 mm. **5**



780 France. Bronze medal "Force courage preparation for military". 56.69 Gr. 50 mm. **5**



781 Belgium. Bronze medal for Automobile club. 54.79 Gr. 50 mm. **5**



782 Belgium. 1851 Bronze medal for prime minister. 52.89 Gr. 50.6 mm. **5**



783 Belgium. 1967 White metal medal of Brussels. 50.89 Gr. 50 mm. **5**



784 Belgium. 1901 Bronze medal "Concours regional agricole of Namur". 50.86 Gr. 58 mm. **5**



785 Belgium. 1953 White metal medal of Brussels. 50.69 Gr. 51 mm. **5**



786 Belgium. 1876 Bronze medal "Festival of 5th July". 50.23 Gr. 80 mm. **5**



787 Belgium. 1845 "Royal academic under Leopold premier". 49.87 Gr. 50.5 mm. **5**



788 France. 1982 white metal medal for Library Larousse in Paris. 50 Gr. 50.5 mm. **5**



789 France. Bronze medal for music competition. 47.83 Gr. 50 mm. **5**



790 Belgium. 1976 bronze medal "Royal Aero club of Belgium". 47.3 Gr. 49.5 mm. **5**



791 Belgium. 1976 bronze medal "Royal Aero club of Belgium".[1] 45.74 Gr. 49.1 mm. **5**



792 Belgium. 1940-1945 world war II. Bronze medal for tragics of Schaarbeek in 1950. 45.9 Gr. 50 mm. **5**



793 Belgium. 1910 Bronze medal "Albrecht I". 42.15 Gr. 60.4 mm. **5**



794 France. 1889 Bronze medal "Souvenir for touring Eiffel Tower". 41.33 Gr. 42.5 mm. **5**



795 Belgium. 1880 white metal medal "International exposition in Brussels". And also for the anniversary of the independence of Belgium- Leopold II. 38.52 Gr. 48.2 mm. **5**



796 Belgium. 1884 bronze medal "souvenir of reconnaissance". Leopold II. 39.57 Gr. 66 mm. **5**



797 France. 1687 casted bronze medal of victory "The gates of Catalonia were unlocked". 25.48 Gr. 40.3 mm. **5**



798 France. 1882 silver medal Tourcoing shooting festival "The grateful riflemen". 36.16 Gr. 59.1 mm. **5**



799 Belgium. 1899 silver medal Liege "The union international exposition". 35.17 Gr. 45.5 mm. **5**



800 France. 1787 zinc medal "The great astronomers in Paris". 31.01 Gr. 42.4 mm. **5**



801 France. 1900 silver-plated medal Eiffel Tower "The souvenir of ascension". 28.67 Gr. 41.3 mm. **5**



802 British. 1965 silver coin great britain "Winston Churchill". 28.54 Gr. 38.4 mm. **5**



803 France. 1900 bronze medal Eiffel Tower "The souvenir of ascension". 28.41 Gr. 41.2 mm. **5**



804 American. 1963 Bronze medal "Michigan national championship of hot air balloon race". 28.17 Gr. 38.2 mm. **5**



805 Belgium. 1874 Bronze medal "Agriculture prize medal". 28.13 Gr. 46.2 mm. **5**



806 France. 1900 bronze medal Eiffel Tower "The souvenir of ascension".[2] 25.68 Gr. 41.2 mm. **5**



807 Belgium. 1887 steel medal. Presented to the mayor of brussels. 26.88 Gr. 41.5 m m. **5**



808 France. 1899-1900 Bronze medal "The president of south Africa Paul kruger". 25.32 Gr. 39.4 mm. **5**



809 France. 1900 bronze medal Eiffel Tower "The souvenir of ascension".[3] 25.6 Gr. 41.1 mm. **5**



810 Belgium. Bronze medal memorial of Abrahamus who promoted historical geograp hy. 24.28 Gr. 36.7 mm. **5**



811 Belgium. 1954 steel medal "The city Maastricht". 23.4 Gr. 54 mm. **5**



812 German. 1950s fantasy coin "1889-1945 Adolf Hitler". 19.6 Gr. 35 mm. **5**



813 British.1830 gold-plated medal for the masonic institution "Duke of Sussex". 18.37 Gr. 36.2 mm. **5**



814 German. 1908 bronze medal "Zeppelin & Wilhelm II". 18.05 Gr. 33.4 mm. **5**



815 British. 1851 zinc medal. London. "Great exhibition of the industry of all nations". 17.7 Gr. 31 mm. **5**



816 British. 1927 silver medal. Royal air force "Royal tournament". 15.43 Gr. 32.4 mm. **5**



817 France. 1770 Bronze medal. "Souvenir of visiting the currency mint". 14.96 Gr. 32 mm. **5**



818 Belgium. 1871 Bronze medal. Prize for international gymnastics. 12.55 Gr. 46.4 mm. **5**



819 Belgium. 1973 steel medal. Expo 60 years of thinking customer. 11.68 Gr. 34 mm. **5**



820 France. 1982 Bronze coin. Centennial of Leon Gambetta. 10 Francs. 10 Gr. 26 mm. **5**



821 France. 1928 gold plated medal. "The first woman to cross the Atlantic by aeroplane". 10.77 Gr. 32 mm. **5**



- 822** France. 1928 gold plated medal. "First east to west transatlantic flight". 10.71 Gr. 31.7 mm. **5**



- 823** Brazil. 1936 5000 Reis. "President Santo Dumont ". 10.03 Gr. 27.6 mm. **5**



- 824** Poland. 1978 20 Zloty. Internspace astronomer Pierwszy. 10.01 Gr. **5**



- 825** Belgium. 1950 Bronze medal for a bicycle race. 9.32 Gr. 37.3 mm. **5**



- 826** Belgium. 1970 Bronze medal for running race in huizingen. 9.08 Gr. 36.7 mm. **5**



- 827** German. 1896 bronze medal. "Trade exhibition in Berlin". 7.7 Gr. 28.5 mm. **5**



- 828** Belgium. 1864 Bronze religion medal. 6.71 Gr. 28.4 mm. **5**



829 Belgium. 1863 Bronze medal. Singing contest in Brussels. 4.94 Gr. 33 mm. **5**



830 France. 1890s Bronze coin. Souvenir for the ascension of Eiffel Tower. 3.81 Gr. 25.1 mm. **5**



831 Belgium. 1901 Bronze medal "International equestrian in Ostende". 41.21 Gr. 68.7 mm. **5**



832 America. 1937. Heart shape bronze medal presented to Charles Maillard by Kans as city in missoun. 191.2 Gr. 72.7 mm. **5**



833 Belgium. Bronze medal presented to Minister of Public Health and Family. 177.74 Gr. 100.3 mm. **5**



834 Belgium. Bronze square medal 30 participants for Brussels international fair. 109.49 Gr. 88.9 mm. **5**



835 Belgium. 1927 Bronze medal "Rotary International convention in Ostende". 97 Gr. 84 mm. **5**



836 Belgium. Bronze medal for a music competition. 97.79 Gr. 77.8 mm. **5**



837 Belgium. 1937 Bronze medal "Central architecture company". 52.42 Gr. 67.7 mm. **5**



838 Belgium. 1932 silver medal of shooting festival challenges. 46.87 Gr. 71.8 mm. **5**



839 Belgium. 1902 Bronze medal "Equestrian couple of Ostende". 32.47 Gr. 76.8 mm. **5**



840 Belgium. 1937 silver plated medal with royal family children. Presented to Rallye in schaerbeek 11.96 Gr. 39.5 mm. **5**



841 France. 1926 Bronze medal. "Evening cross entertainment". 10.81 Gr. 41.3 mm. **5**



842 Italy. Cameo shell lamp without electricity foundation. Wedding scenery sculptured in 1920s from Naples area. 200+ Gr. 146 mm. **5**



843 1900s. Hungary. Bronze decoration medal and casted key of the hotel room in Budapest. "A pensive old woman". With the signature of the sculptor below. 300 Gr. **5**



844 BYZANTINE LEAD SEALS. Henry of Flanders (1178-1216). 62.41 Gr. 42.1 mm. **8'000**



845 BYZANTINE LEAD SEALS. 16.29 Gr. 21 mm. **5**



846 BYZANTINE LEAD SEALS. 8.91 Gr. 24 m. **5**



847 BYZANTINE LEAD SEALS. 13.44 Gr. 25.3 mm. **5**



848 BYZANTINE LEAD SEALS. 22.04 Gr. 29.7 mm.

5



849 BYZANTINE LEAD SEALS. 6.97 Gr. 22.7 mm.

5



850 BYZANTINE LEAD SEALS. 33.09 Gr. 31.1 mm.

5



851 BYZANTINE LEAD SEALS. 4.95 Gr. 16.2 mm.

5



852 ROMAN TESSERA (Circa 1st-3rd century AD). 5.69 Gr. 23 mm.

5



853 Byzantine PB Cast Amulet. 11th -13th centuries AD. 209.76 Gr. 117.2 mm.

5



854 PB Quadrans. Uncertain mint in Spain, 1st century BC. 192.42 Gr. 101.2 mm.

5



855 ANCIENT BYZANTINE BRONZE STAMP SEAL. 17.13 Gr. 29.3 mm. 5



856 ANCIENT BYZANTINE BRONZE STAMP SEAL. 10.1 Gr. 21.8 mm. 5



857 ANCIENT BYZANTINE BRONZE STAMP SEAL. 7.08 Gr. 16.6 mm. 5



858 ANCIENT BYZANTINE BRONZE STAMP SEAL. 5.94 Gr. 17.7 mm. 5



859 ANCIENT BYZANTINE BRONZE STAMP SEAL. 14.09 Gr. 25 mm. 5



860 ANCIENT BYZANTINE SILVER STAMP SEAL. 7.71 Gr. 22.3 mm. 5



861 ANCIENT BYZANTINE SILVER STAMP SEAL. 4.83 Gr. 13.4 mm. 5



862 ANCIENT BYZANTINE BRONZE STAMP SEAL. 17.43 Gr. 24.5 mm. **5**



863 ANCIENT ROMAN BRONZE OBJECT. 2.93 Gr. 19.3 mm. **5**



864 ISLAMIC SILVER STAMP SEAL. 7.96 Gr. 30.3 mm. **5**



865 ISLAMIC BRONZE STAMP SEAL. 4.6 Gr. 25 mm. **5**



866 ISLAMIC BRONZE STAMP SEAL. 4.27 Gr. 25.6 mm. **5**



867 BYZANTINE WEIGHT. 6.63 Gr. 20.7 mm. **5**



868 BYZANTINE WEIGHT. 29.48 Gr. 26.5 mm. **5**



869 BYZANTINE WEIGHT. 54.19 Gr. 23 mm. **5**



870 ROMAN TESSERA. (1st-2nd century AD). Clay. 1.7 Gr. 17.6 mm. **5**



871 ROMAN TESSERA. (1st-2nd century AD). Clay. 1.48 Gr. 17.5 mm. **5**



872 ROMAN TESSERA. (1st-2nd century AD). Clay. 1.52 Gr. 18 mm. **5**



873 ROMAN TESSERA. (1st-2nd century AD). Clay. 1.58 Gr. 19.4 mm. **5**



874 ROMAN TESSERA. (1st-2nd century AD). Clay. 2.17 Gr. 22.2 mm. **5**



875 ROMAN TESSERA. (1st-2nd century AD). Clay. 2.12 Gr. 19.1 mm. **5**



876 ROMAN TESSERA. (1st-2nd century AD). Clay. 1.69 Gr. 19 mm. **5**



877 ROMAN TESSERA. (1st-2nd century AD). Clay. 1.82 Gr. 18 mm. **5**



878 ROMAN TESSERA. (1st-2nd century AD). Clay. 0.97 Gr. 14.7 mm. 5



879 ROMAN TESSERA. (1st-2nd century AD). Clay. 0.51 Gr. 11.3 mm. 5



880 ROMAN TESSERA. (1st-2nd century AD). Clay. 1.01 Gr. 18.2 mm. 5



881 ROMAN TESSERA. (1st-2nd century AD). Clay. 1.56 Gr. 18.2 mm. 5



882 ROMAN TESSERA. (1st-2nd century AD). Clay. 1.63 Gr. 18.5 mm. 5



883 ROMAN TESSERA. (1st-2nd century AD). Clay. 1.85 Gr. 21.5 mm. 5



884 ROMAN TESSERA. (1st-2nd century AD). Clay. 1.94 Gr. 22.7 mm. 5



885 GREEK BRONZE ARROWHEAD.(CIRCA 3RD-1ST BC). 4.24 Gr. 36.6 mm. **5**



886 GREEK BRONZE ARROWHEAD.(CIRCA 3RD-1ST BC). 4.86 Gr. 41 mm. **5**



887 GREEK BRONZE ARROWHEAD.(CIRCA 3RD-1ST BC). 5.2 Gr. 40.7 mm. **5**



888 GREEK BRONZE ARROWHEAD.(CIRCA 3RD-1ST BC). 6.21 Gr. 50 mm. **5**



889 GREEK BRONZE ARROWHEAD.(CIRCA 3RD-1ST BC). 6.42 Gr. 47.7 mm. **5**



890 GREEK BRONZE ARROWHEAD.(CIRCA 3RD-1ST BC). 4.16 Gr. 36 mm. **5**



891 GREEK BRONZE ARROWHEAD.(CIRCA 3RD-1ST BC). 1.27 Gr. 37.6 mm. **5**



892 GREEK BRONZE ARROWHEAD.(CIRCA 3RD-1ST BC). 5.82 Gr. 37.7 mm. **5**



893 GREEK BRONZE ARROWHEAD.(CIRCA 3RD-1ST BC). 5.59 Gr. 64 mm. **5**



894 GREEK BONE ARROWHEAD.(CIRCA 3RD-1ST BC). 11.33 Gr. 12 mm. **5**



895 ANCIENT ROMAN BRONZE BRACELET(1ST- 3RD CENTURY AD). 46.89 Gr. 58.3 mm. **5**



896 ANCIENT ROMAN BRONZE BRACELET(1ST- 3RD CENTURY AD). 48.13 Gr. 60.6 mm. **5**



897 ANCIENT ROMAN BRONZE BRACELET(1ST- 3RD CENTURY AD). 49.01 Gr. 59.5 mm. **5**



898 ANCIENT ROMAN BRONZE BRACELET(1ST- 3RD CENTURY AD). 49.56 Gr. 60.5 mm. **5**



899 ANCIENT GOLD EARRING. 1.54 Gr. **5**



900 ANCIENT GOLD EARRING. 2.42 Gr. **5**



901 ANCIENT SILVER EARRING. 1.8 Gr. **5**



902 ANCIENT RING STONE. 0.27 Gr. 8.7 mm. **5**



903 ANCIENT RING STONE. 0.33 Gr. 8.6 mm.

5



904 ANCIENT RING STONE. 0.34 Gr. 8.4 mm.

5



905 ANCIENT RING STONE. 0.25 Gr. 8.8 mm.

5



906 ANCIENT RING STONE. 0.24 Gr. 8 mm.

5



907 ANCIENT RING STONE. 0.2 Gr. 8.3 mm.

5



908 ANCIENT RING STONE. 1.12 Gr. 14.3 mm.

5



909 ANCIENT RING STONE. 0.34 Gr. 11 mm.

5



910 ANCIENT RING STONE. 0.44 Gr. 12.6 mm.

5



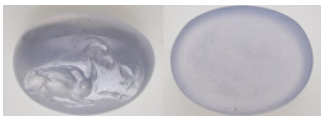
911 ANCIENT RING STONE. 0.22 Gr. 9 mm.

5



912 ANCIENT RING STONE. 2.14 Gr. 19.4 mm.

5



913 ANCIENT RING STONE. 2.73 Gr. 20 mm.

5



914 ANCIENT RING STONE. 0.46 Gr. 11.5 mm.

5



915 ANCIENT RING STONE. 0.45 Gr. 13 mm.

5



916 ANCIENT RING STONE. 2.27 Gr. 14.2 mm.

5



917 ANCIENT RING STONE. 0.53 Gr. 10.2 mm.

5



918 ANCIENT RING STONE. 0.57 Gr. 15 mm.

5



919 ANCIENT RING STONE. 0.55 Gr. 15.1 mm.

5



920 ANCIENT RING STONE. 0.14 Gr. 9 mm.

5



921 OTTOMAN RING STONE. 0.85 Gr. 13.2 mm.

5



922 ANCIENT ROMAN BRONZE GLADIUS SWORD PENDANT (1ST- 3RD CENTURY AD). 25.6 Gr. 63.3 mm.

5



923 ANCIENT ROMAN BRONZE GLADIUS SWORD PENDANT (1ST- 3RD CENTURY AD). 8.78 Gr. 41.3 mm.

5



924 ANCIENT ROMAN BRONZE GLADIUS SWORD PENDANT (1ST- 3RD CENTURY AD). 7.41 Gr. 41.2 mm. **5**



925 ANCIENT ROMAN BRONZE GLADIUS SWORD PENDANT (1ST- 3RD CENTURY AD). 6.44 Gr. 37.2 mm. **5**



926 ANCIENT ROMAN BRONZE GLADIUS SWORD PENDANT (1ST- 3RD CENTURY AD). 5.48 Gr. 33.1 mm. **5**



927 ANCIENT ROMAN BRONZE GLADIUS SWORD PENDANT (1ST- 3RD CENTURY AD). 5.38 Gr. 41 mm. **5**



928 ANCIENT ROMAN BRONZE GLADIUS SWORD PENDANT (1ST- 3RD CENTURY AD). 4.62 Gr. 34 mm. **5**



929 ANCIENT ROMAN BRONZE MEDICAL INSTRUMENT (1ST-3RD CENTURY A D.). 3.79 Gr. 123.6 mm. **5**



930 ANCIENT ROMAN BRONZE MEDICAL INSTRUMENT (1ST-3RD CENTURY A D.). 6.6 Gr. 13.72 mm. **5**



931 ANCIENT ROMAN BRONZE FIGURINE. 45.55 Gr. 59.4 mm. **5**



932 ANCIENT ROMAN BRONZE FIGURINE. 67.08 Gr. 77.8 mm. **5**



933 ANCIENT ROMAN BRONZE FIGURINE. 51.42 Gr. 65.1 mm. **5**



934 ANCIENT ROMAN BRONZE FIGURINE. 78.85 Gr. 75.2 mm.

5



935 ANCIENT ROMAN BRONZE FIGURINE. 27.48 Gr. 53.5 mm.

5



936 ANCIENT ROMAN BRONZE FIGURINE. 40.81 Gr. 61 mm.

5



937 ANCIENT ROMAN BRONZE FIGURINE. 12.87 Gr. 47 mm.

5



938 ANCIENT ROMAN BRONZE FIGURINE. 15.5 mm. 44.6 mm.

5



939 ANCIENT ROMAN SILVER FIGURINE. 9.93 Gr. 37.4 mm.

5



940 ANCIENT ROMAN BRONZE FIGURINE. 9.91 Gr. 41.1 mm.

5



941 ANCIENT ROMAN BRONZE FIGURINE. 15.62 Gr. 46 mm.

5



942 ANCIENT ROMAN BRONZE FIGURINE. 4.26 Gr. 20 mm.

5



943 ANCIENT ROMAN BRONZE FIGURINE. 8.15 Gr. 26 mm.

5



944 ANCIENT ROMAN BRONZE FIGURINE. 6.85 Gr. 21.6 mm.

5



945 ANCIENT ROMAN BRONZE FIGURINE. 16.42 Gr. 19.7 mm.

5



946 ANCIENT ROMAN BRONZE FIGURINE. 11.91 Gr. 27.5 mm.

5



947 ANCIENT ROMAN BRONZE FIGURINE. 23.62 Gr. 29.5 mm.

5



948 ANCIENT ROMAN BRONZE FIGURINE. 30.46 Gr. 48.3 mm.

5



949 ANCIENT ROMAN BRONZE FIGURINE. 8.91 Gr. 24.5 mm.

5



950 ANCIENT ROMAN BRONZE FIGURINE. 155.96 Gr. 65 mm.

5



951 ANCIENT ROMAN BRONZE FIGURINE. 61.35 Gr. 25.2 mm.

5



952 ANCIENT ROMAN BRONZE FIGURINE. 33.84 Gr. 52.4 mm.

5



953 ANCIENT ROMAN BRONZE FIGURINE. 26.07 Gr. 42.6 mm.

5



954 ANCIENT ROMAN SILVER FIGURINE. 4.23 Gr. 18.3 mm.

5



955 ANCIENT ROMAN gold-plated Object. 6.7 Gr. 19.4 mm.

5



956 ANCIENT ROMAN BRONZE FIGURINE. 18.58 Gr. 29.7 mm.

5



957 ANCIENT ROMAN BRONZE OBJECT. 54.72 Gr. 61.1 mm.

5



958 ANCIENT ROMAN BRONZE OBJECT. 171.49 Gr. 86.6 mm.

5



959 ANCIENT ROMAN BRONZE OBJECT. 13.92 Gr. 31 mm.

5



960 ANCIENT ROMAN BRONZE OBJECT. 2.04 Gr. 19.5 mm.

5



961 ANCIENT BYZANTINE BRONZE OBJECT. 2 Gr. 34 mm.

5



962 ANCIENT BYZANTINE SILVER OBJECT. 2.34 Gr. 19.7 mm.

5



963 ANCIENT BYZANTINE BRONZE OBJECT. 8.46 Gr. 32.3 mm.

5



964 ANCIENT BYZANTINE BRONZE OBJECT. 13.43 Gr. 32.1 mm.

5



965 ANCIENT BYZANTINE BRONZE OBJECT. 13.54 Gr. 41 mm.

5



966 ANCIENT BYZANTINE BRONZE OBJECT. 7.64 Gr. 30.7 mm.

5



967 ANCIENT BYZANTINE BRONZE OBJECT. 1.63 Gr. 26.8 mm.

5



968 ANCIENT BYZANTINE BRONZE OBJECT. 9.93 Gr. 46.2 mm.

5



969 ANCIENT ROMAN BRONZE EAGLE FIGURINE (1ST-5TH CENTURY AD). 130.57 Gr. 66.5 mm.

5



970 ANCIENT ROMAN BRONZE EAGLE FIGURINE (1ST-5TH CENTURY AD). 39.55 Gr. 41.2 mm.

5



971 ANCIENT ROMAN BRONZE EAGLE FIGURINE (1ST-5TH CENTURY AD). 23.46 Gr. 42.6 mm.

5



972 ANCIENT ROMAN BRONZE EAGLE FIGURINE (1ST-5TH CENTURY AD). 16.73 Gr. 36.3 mm. **5**



973 ANCIENT ROMAN BRONZE EAGLE FIGURINE (1ST-5TH CENTURY AD). 47.69 Gr. 51.6 mm. **5**



974 ANCIENT ROMAN BRONZE EAGLE FIGURINE (1ST-5TH CENTURY AD). 81 Gr. 80.5 mm. **5**



975 ANCIENT ROMAN BRONZE EAGLE FIGURINE (1ST-5TH CENTURY AD). 37.08 Gr. 60.2 mm. **5**



976 ANCIENT ROMAN BRONZE EAGLE FIGURINE (1ST-5TH CENTURY AD). 20.71 Gr. 34.3 mm. **5**



977 ANCIENT ROMAN BRONZE EAGLE FIGURINE (1ST-5TH CENTURY AD). 8.33
Gr. 26 mm. **5**



978 ANCIENT ROMAN BRONZE EAGLE FIGURINE (1ST-5TH CENTURY AD). 11.18
Gr. 25.6 mm. **5**



979 ANCIENT ROMAN BRONZE EAGLE FIGURINE (1ST-5TH CENTURY AD). 5.9 G
r. 20.7 mm. **5**



980 ANCIENT ROMAN BRONZE EAGLE FIGURINE (1ST-5TH CENTURY AD). 6.66
Gr. 27 mm. **5**



981 ANCIENT ROMAN BRONZE EAGLE FIGURINE (1ST-5TH CENTURY AD). 9.92
Gr. 34.4 mm. **5**



982 ANCIENT ROMAN BRONZE EAGLE FIGURINE (1ST-5TH CENTURY AD). 9.48 Gr. 29 mm. **5**



983 ANCIENT ROMAN SILVER EAGLE FIGURINE (1ST-5TH CENTURY AD). 3.58 Gr. 23.6 mm. **5**



984 ANCIENT ROMAN SILVER AND GOLD-PLATED EAGLE FIGURINE (1ST-5TH CENTURY AD). 2.18 Gr. 22.5 mm. **5**



985 ANCIENT ROMAN SILVER EAGLE FIGURINE (1ST-5TH CENTURY AD). 2.8 Gr. 19.2 mm. **5**



986 ANCIENT ROMAN SILVER EAGLE FIGURINE (1ST-5TH CENTURY AD). 1.44 Gr. 14.7 mm. **5**



987 ANCIENT ROMAN SILVER EAGLE FIGURINE (1ST-5TH CENTURY AD). 1.33 Gr. 13.5 mm. **5**



988 ANCIENT ROMAN SILVER EAGLE FIGURINE (1ST-5TH CENTURY AD). 1.11 G
r. 15 mm. **5**



989 ANCIENT ROMAN SILVER EAGLE FIGURINE (1ST-5TH CENTURY AD). 0.89 G
r. 12.8 mm. **5**



990 ANCIENT ROMAN SILVER EAGLE FIGURINE (1ST-5TH CENTURY AD). 0.86 G
r. 12.7 mm. **5**



991 ANCIENT ROMAN BRONZE BULL FIGURINE (1ST-5TH CENTURY AD). 64.26 G
r. 55.1 mm. **5**



992 ANCIENT ROMAN BRONZE BULL FIGURINE (1ST-5TH CENTURY AD). 37.14 G
r. 55.7 mm. **5**



993 ANCIENT ROMAN BRONZE DOG FIGURINE (1ST-5TH CENTURY AD) 46.84 Gr.
47.6 mm. **5**



994 ANCIENT ROMAN BRONZE HORSE FIGURINE (1ST-5TH CENTURY AD). 50 G
r. 56 mm. **5**



995 ANCIENT ROMAN BRONZE HORSE FIGURINE (1ST-5TH CENTURY AD). 45.39
Gr. 50.5 mm. **5**



996 ANCIENT ROMAN BRONZE HORSE FIGURINE (1ST-5TH CENTURY AD). 7.77
Gr. 42 mm. **5**



997 ANCIENT ROMAN BRONZE BRUIN FIGURINE (1ST-5TH CENTURY AD). 32.92
Gr. 43 mm. **5**



998 ANCIENT ROMAN BRONZE YEANLING FIGURINE (1ST-5TH CENTURY AD). 1
9.83 Gr. 35 mm. **5**



999 ANCIENT ROMAN BRONZE BULL FIGURINE (1ST-5TH CENTURY AD). 26.34 G
r. 47.5 mm. **5**



1000 ANCIENT ROMAN SILVER DOG FIGURINE (1ST-5TH CENTURY AD). 13.95 G
r. 28.3 mm. **5**



1001 ANCIENT ROMAN BRONZE FIGURINE (1ST-5TH CENTURY AD). 28.13 Gr. 33.5 mm. **5**



1002 ANCIENT ROMAN BRONZE OIL LAMP (1ST-5TH CENTURY AD). 200+ Gr. 130 mm. **5**



1003 ANCIENT ROMAN BABY EROS FIGURINE (1ST-5TH CENTURY AD). 112.16 G r. 81 mm. **5**



1004 ANCIENT ROMAN BRONZE HAND-TOE (1ST-5TH CENTURY AD). 133.44 Gr. 63 mm. **5**



1005 ANCIENT ROMAN BRONZE FOOD-TOE (1ST-5TH CENTURY AD). 51.07 Gr. 39 mm. **5**



1006 ANCIENT ROMAN BRONZE HORSE FOOD (1ST-5TH CENTURY AD). 16.48 G r. 33 mm. **5**



1007 ANCIENT ROMAN BRONZE OBJECT (1ST-5TH CENTURY AD). 28.36 Gr. 51.7 mm. **5**



1008 ANCIENT ROMAN BRONZE OBJECT (1ST-5TH CENTURY AD). 12.57 Gr. 24.4 mm. **5**



1009 ANCIENT ROMAN SILVER HAND OBJECT (1ST-5TH CENTURY AD). 2.23 Gr. 21.5 mm. **5**



1010 ANCIENT ROMAN SILVER OBJECT (1ST-5TH CENTURY AD). 9.11 Gr. 22.4 m m. **5**



1011 ANCIENT ROMAN SILVER OBJECT (1ST-5TH CENTURY AD). 1.83 Gr. 18.8 m m. **5**



1012 ANCIENT ROMAN BRONZE OBJECT (1ST-5TH CENTURY AD). 8.09 Gr. 2.6 m m. **5**



1013 ANCIENT ROMAN BRONZE OBJECT (1ST-5TH CENTURY AD). 2.77 Gr. 23 m m. **5**



1014 ANCIENT ROMAN SILVER OBJECT (1ST-5TH CENTURY AD). 5.35 Gr. 21.5 m m. **5**



1015 ANCIENT ROMAN OBJECT (1ST-5TH CENTURY AD). 10.12 Gr. 28.5 mm. **5**



1016 ANCIENT ROMAN BRONZE OBJECT (1ST-5TH CENTURY AD). 10.78 Gr. 39 m m. **5**



1017 ANCIENT ROMAN BRONZE OBJECT (1ST-5TH CENTURY AD). 10.05 Gr. 47 m m. **5**



1018 ANCIENT ROMAN BRONZE HORSE OBJECT (1ST-5TH CENTURY AD). 14.72 Gr. 48 mm. **5**



1019 ANCIENT ROMAN BRONZE OBJECT (1ST-5TH CENTURY AD). 15.8 Gr. 38.2 mm. **5**



1020 ANCIENT ROMAN BRONZE OBJECT (1ST-5TH CENTURY AD). 12.71 Gr. 29 mm. **5**



1021 ANCIENT ROMAN SILVER OBJECT (1ST-5TH CENTURY AD). 55.5 Gr. 11.3 mm. **5**



1022 ANCIENT ROMAN BRONZE OBJECT (1ST-5TH CENTURY AD). 42.46 Gr. 42 mm. **5**



1023 ANCIENT ROMAN BRONZE OBJECT (1ST-5TH CENTURY AD). 75.69 Gr. 51.6 mm. **5**



1024 ANCIENT ROMAN BRONZE OBJECT (1ST-5TH CENTURY AD). 14.4 Gr. 26.4 mm. **5**



1025 ANCIENT ROMAN BRONZE OBJECT (1ST-5TH CENTURY AD). 32.08 Gr. 78.5 mm. **5**



1026 ANCIENT ROMAN BRONZE BELT BUCKLE (1ST-5TH CENTURY AD). 29.53 Gr. 61.4 mm. **5**



1027 ANCIENT ROMAN BRONZE BELT BUCKLE (1ST-5TH CENTURY AD). 14.93 Gr. 50 mm. **5**



1028 ANCIENT ROMAN BRONZE FIBULA (1ST-3TH CENTURY AD) . 28.44 Gr. 52.8 mm. **5**



1029 ANCIENT ROMAN BRONZE FIBULA (1ST-3TH CENTURY AD) . 28.28 Gr. 62.4 mm. **5**



1030 ANCIENT ROMAN BRONZE FIBULA (1ST-3TH CENTURY AD) 41.4 Gr. 78 mm. **5**



1031 ANCIENT ROMAN BRONZE FIBULA (1ST-3TH CENTURY AD) . 42 Gr. 51 mm. **5**



1032 ANCIENT ROMAN BRONZE FIBULA (1ST-3TH CENTURY AD) . 23.22 Gr. 43.5 mm. **5**



1033 ANCIENT ROMAN BRONZE FIBULA (1ST-3TH CENTURY AD) . 21.77 Gr. 43.6 mm. **5**



1034 ANCIENT ROMAN BRONZE FIBULA (1ST-3TH CENTURY AD) . 15.83 Gr. 39 m m. **5**



1035 ANCIENT ROMAN BRONZE FIBULA (1ST-3TH CENTURY AD) . 15.72 Gr. 38.6 mm. **5**



1036 ANCIENT ROMAN BRONZE FIBULA (1ST-3TH CENTURY AD) . 19.29 Gr. 53 m m. **5**



1037 ANCIENT ROMAN BRONZE FIBULA (1ST-3TH CENTURY AD) . 18.44 Gr. 50.5 mm. **5**



1038 ANCIENT ROMAN BRONZE FIBULA (1ST-3TH CENTURY AD) . 16.19 Gr. 36.6 mm. **5**



1039 ANCIENT ROMAN BRONZE FIBULA (1ST-3TH CENTURY AD) . 9.71 Gr. 47.6 m m. **5**



1040 ANCIENT ROMAN BRONZE FIBULA (1ST-3TH CENTURY AD) . 8.25 Gr. 44.5 m m. **5**



1041 ANCIENT ROMAN BRONZE FIBULA (1ST-3TH CENTURY AD) . 8.47 Gr. 35.3 m m. **5**



1042 ANCIENT ROMAN BRONZE FIBULA (1ST-3TH CENTURY AD) . 7.4 Gr. 36 mm. **5**



1043 ANCIENT ROMAN BRONZE FIBULA (1ST-3TH CENTURY AD) . 5.55 Gr. 40.7 m m. **5**



1044 ANCIENT ROMAN BRONZE FIBULA (1ST-3TH CENTURY AD) . 46.62 Gr. 30.6 mm. **5**



1045 ANCIENT ROMAN BRONZE FIBULA (1ST-3TH CENTURY AD) . 8.78 Gr. 54 m m. **5**



1046 ANCIENT ROMAN BRONZE FIBULA (1ST-3TH CENTURY AD) . 12.24 Gr. 32.4 mm. **5**



1047 ANCIENT ROMAN BRONZE FIBULA (1ST-3TH CENTURY AD) . 11.7 Gr. 38 m m. **5**



1048 ANCIENT ROMAN BRONZE FIBULA (1ST-3TH CENTURY AD) . 13.1 Gr. 38.6 m m. **5**



1049 ANCIENT ROMAN BRONZE FIBULA (1ST-3TH CENTURY AD) . 15.11 Gr. 31 m m. **5**



1050 ANCIENT ROMAN BRONZE FIBULA (1ST-3TH CENTURY AD) . 6.72 Gr. 33.6 m m. **5**



1051 ANCIENT ROMAN BRONZE FIBULA (1ST-3TH CENTURY AD) . 2.91 Gr. 31.4 m.
5



1052 ANCIENT ROMAN BRONZE FIBULA (1ST-3TH CENTURY AD) . 3.86 Gr. 61.5 m.
5



1053 ANCIENT ROMAN BRONZE SEWING NEEDLE (1ST-3TH CENTURY AD) . 5.19 Gr. 138.5 mm.
5



1054 ANCIENT ROMAN BRONZE SEWING NEEDLE (1ST-3TH CENTURY AD) . 6.51 Gr. 126 mm.
5



1055 ANCIENT ROMAN BRONZE OBJECT (1ST-3TH CENTURY AD) . 10 Gr. 133 m.
5



1056 ANCIENT ROMAN BRONZE OBJECT (1ST-3TH CENTURY AD) . 14.15 Gr. 149.3 mm. **5**



1057 ANCIENT ROMAN BRONZE MEDICAL INSTRUMENT (1ST-3RD CENTURY A D.). 6.35 Gr. 11.53 mm. **5**



1058 ANCIENT ROMAN BRONZE OBJECT (1ST-3TH CENTURY AD) . 5.31 Gr. 149.7 mm. **5**



1059 ANCIENT ROMAN BRONZE OBJECT (1ST-3TH CENTURY AD) . 10.04 Gr. 81.5 mm. **5**



1060 ANCIENT ROMAN BRONZE OBJECT (1ST-3TH CENTURY AD) . 41.2 Gr. 96.1 mm. **5**



1061 ANCIENT ROMAN BRONZE OBJECT (1ST-3TH CENTURY AD) . 9.08 Gr. 64.1 mm. **5**



1062 ANCIENT ROMAN BRONZE OBJECT (1ST-3TH CENTURY AD) . 5.93 Gr. 50 m m. **5**



1063 ANCIENT ROMAN BRONZE OBJECT (1ST-3TH CENTURY AD) . 12.53 Gr. 59.4 mm. **5**



1064 ANCIENT ROMAN BRONZE OBJECT (1ST-3TH CENTURY AD) . 7.86 Gr. 55.1 mm. **5**



1065 ANCIENT ROMAN BRONZE OBJECT (1ST-3TH CENTURY AD) . 51.17 Gr. 81 mm. **5**



1066 ANCIENT ROMAN BRONZE OBJECT (1ST-3TH CENTURY AD) . 36.13 Gr. 49.6 mm. **5**



1067 ANCIENT ROMAN BRONZE OBJECT (1ST-3TH CENTURY AD) . 19.48 Gr. 47.5 mm. **5**



1068 ANCIENT ROMAN BRONZE OBJECT (1ST-3TH CENTURY AD) . 15.88 Gr. 73.6 mm. **5**



1069 ANCIENT ROMAN BRONZE OBJECT (1ST-3TH CENTURY AD) . 2.53 Gr. 50 m. **5**



1070 ANCIENT ROMAN BRONZE OBJECT (1ST-3TH CENTURY AD) . 25+55 Gr. 64.3 mm. **5**



1071 ANCIENT ROMAN BRONZE OBJECT (1ST-3TH CENTURY AD) . 34.31 Gr. 47.7 mm. **5**



1072 ANCIENT ROMAN BRONZE OBJECT (1ST-3TH CENTURY AD) . 6.72 Gr. 34 m. **5**



1073 ANCIENT ROMAN BRONZE OBJECT (1ST-3TH CENTURY AD) . 6.88 Gr. 27.2 mm. **5**



1074 ANCIENT ROMAN OBJECT (1ST-3TH CENTURY AD) . 23.79 Gr. 49 mm. **5**



1075 ANCIENT ROMAN GOLD BROOCH OBJECT (1ST-3TH CENTURY AD) . 1.17 Gr. 18.8 mm. **5**



1076 ANCIENT ROMAN OBJECT (1ST-3TH CENTURY AD) . 0.34 Gr. 14 mm. **5**



1077 ANCIENT ROMAN SILVER CERTIFICATE (1ST-3TH CENTURY AD) . 1.39 Gr. 64 mm. **5**



1078 ANCIENT ROMAN OBJECT (1ST-3TH CENTURY AD) . 27.53 Gr. 39 mm. **5**



1079 ANCIENT ROMAN OBJECT (1ST-3TH CENTURY AD) . 78.73 Gr. 48.4 mm. **5**



1080 ANCIENT ROMAN OBJECT (1ST-3TH CENTURY AD) . 8.05 Gr. 41 mm. **5**



1081 ANCIENT ROMAN OBJECT (1ST-3TH CENTURY AD) . 8.27 Gr. 50 mm. **5**



1082 ANCIENT ROMAN OBJECT (1ST-3TH CENTURY AD) . 16.26 Gr. 59 mm. **5**



1083 ANCIENT ROMAN OBJECT (1ST-3TH CENTURY AD) . 8.32 Gr. 40 mm. **5**



1084 ANCIENT ROMAN OBJECT (1ST-3TH CENTURY AD) . 2.21 Gr. 19 mm. **5**



1085 ANCIENT ROMAN OBJECT (1ST-3TH CENTURY AD) . 20.28 Gr. 56 mm. **5**



1086 ANCIENT ROMAN GOLD PENDANT (1ST-3TH CENTURY AD) . 0.95 Gr. 16 m m. **5**



1087 ANCIENT ROMAN GOLD PENDANT (1ST-3TH CENTURY AD) . 1.28 Gr. 19.6 m m. **5**



1088 ANCIENT ROMAN GOLD PENDANT (1ST-3TH CENTURY AD) . 2.4 Gr. 31.1 m m. **5**



1089 ANCIENT ROMAN GOLD PENDANT (1ST-3TH CENTURY AD) . 0.66 Gr. 8 mm. **5**



1090 ANCIENT ROMAN SILVER PENDANT (1ST-3TH CENTURY AD) . 1.9 Gr. 18.2 mm. **5**



1091 ANCIENT ROMAN GOLD PENDANT (1ST-3TH CENTURY AD) . 0.67 Gr. 28.6 m m. **5**



1092 ANCIENT ROMAN GOLD RING (1ST-5TH CENTURY AD.). 1.24 Gr. **5**



1093 ANCIENT ROMAN GOLD RING (1ST-5TH CENTURY AD.). 1.35 Gr. **5**



1094 ANCIENT ROMAN GOLD RING (1ST-5TH CENTURY AD.). 2.08 Gr. **5**



1095 ANCIENT ROMAN GOLD RING (1ST-5TH CENTURY AD.). 0.60 Gr. **5**



1096 ANCIENT ROMAN GOLD RING (1ST-5TH CENTURY AD.). 0.8 Gr. **5**



1097 ANCIENT ROMAN BRONZE RING (1ST-5TH CENTURY AD.). 1.96 Gr. **5**



1098 ANCIENT ROMAN SILVER RING (1ST-5TH CENTURY AD.). 2.51 Gr. **5**



1099 ANCIENT ROMAN SILVER RING (1ST-5TH CENTURY AD.). 2.76 Gr. **5**



1100 ANCIENT ROMAN SILVER RING (1ST-5TH CENTURY AD.). 4.25 Gr. **5**



1101 ANCIENT ROMAN SILVER RING (1ST-5TH CENTURY AD.). 4.02 Gr. **5**



1102 ANCIENT ROMAN SILVER RING (1ST-5TH CENTURY AD.). 10.79 Gr. **5**



1103 ANCIENT ROMAN BRONZ RING (1ST-5TH CENTURY AD.). 2.53 Gr. **5**



1104 ANCIENT ROMAN BRONZE RING (1ST-5TH CENTURY AD.) 6.64 Gr. **5**



1105 ANCIENT ROMAN BRONZE RING (1ST-5TH CENTURY AD.) 7.36 Gr. **5**



1106 ANCIENT ROMAN BRONZE RING (1ST-5TH CENTURY AD.) 6.92 Gr. **5**



1107 ANCIENT ROMAN SILVER RING (1ST-5TH CENTURY AD.) 4.04 Gr. **5**



1108 ANCIENT ROMAN BRONZE RING (1ST-5TH CENTURY AD.) 2.67 Gr. **5**



1109 ANCIENT ROMAN BRONZE RING (1ST-5TH CENTURY AD.) 2.69 Gr. **5**



1110 ANCIENT ROMAN BRONZE RING (1ST-5TH CENTURY AD.) 9.29 Gr. **5**



1111 ANCIENT ROMAN BRONZE RING (1ST-5TH CENTURY AD.) 9.43 Gr. 5



1112 ANCIENT ROMAN BRONZE RING (1ST-5TH CENTURY AD.) 2.23 Gr. 5



1113 ANCIENT ROMAN BRONZE RING (1ST-5TH CENTURY AD.) 3.61 Gr. 5



1114 ANCIENT ROMAN BRONZE RING (1ST-5TH CENTURY AD.) 1.01 Gr. 5



1115 ANCIENT ROMAN BRONZE RING (1ST-5TH CENTURY AD.) 3.26 Gr. 5



1116 ANCIENT ROMAN BRONZE RING (1ST-5TH CENTURY AD.) 2.01 Gr. 5



1117 ANCIENT ROMAN BRONZE RING (1ST-5TH CENTURY AD.) 8.36 Gr. 5



1118 ANCIENT ROMAN BRONZE RING (1ST-5TH CENTURY AD.) 4.66 Gr. **5**



1119 ANCIENT ROMAN BRONZE RING (1ST-5TH CENTURY AD.) 2.74 Gr. **5**



1120 ANCIENT ROMAN BRONZE RING (1ST-5TH CENTURY AD.) 4.3 Gr. **5**



1121 ANCIENT ROMAN BRONZE RING (1ST-5TH CENTURY AD.) 6.76 Gr. **5**



1122 ANCIENT ROMAN BRONZE RING (1ST-5TH CENTURY AD.) 3.85 Gr. **5**



1123 ANCIENT ROMAN BRONZE RING (1ST-5TH CENTURY AD.) 1.96 Gr. **5**



1124 ANCIENT ROMAN BRONZE RING (1ST-5TH CENTURY AD.) 4.13 Gr. **5**



1125 ANCIENT ROMAN BRONZE RING (1ST-5TH CENTURY AD.) 5.41 Gr. **5**



1126 ANCIENT ROMAN BRONZE RING (1ST-5TH CENTURY AD.) 11.09 Gr. **5**



1127 ANCIENT ROMAN BRONZE RING (1ST-5TH CENTURY AD.) 5.07 Gr. **5**



1128 ANCIENT ROMAN BRONZE RING (1ST-5TH CENTURY AD.) 3.91 Gr. **5**



1129 ANCIENT ROMAN BRONZE RING (1ST-5TH CENTURY AD.) 3.76 Gr. **5**



1130 ANCIENT ROMAN BRONZE RING (1ST-5TH CENTURY AD.) 5.31 Gr. **5**



1131 ANCIENT ROMAN BRONZE RING (1ST-5TH CENTURY AD.) 15.75 Gr. **5**



1132 BRONZE RING . 0.92 Gr. **5**



1133 ANCIENT ROMAN BRONZE RING (1ST-5TH CENTURY AD.) 1.83 Gr. **5**



1134 ANCIENT ROMAN BRONZE RING (1ST-5TH CENTURY AD.) 16.45 Gr. 53 mm. **5**



1135 ANCIENT ROMAN SILVER RING (1ST-5TH CENTURY AD.) 8.71 Gr. **5**



1136 ANCIENT ROMAN BRONZE RING (1ST-5TH CENTURY AD.) 5.57 Gr. **5**



1137 ANCIENT ROMAN BRONZE RING (1ST-5TH CENTURY AD.) 2.81 Gr. **5**



1138 ANCIENT ROMAN BRONZE RING (1ST-5TH CENTURY AD.) 4.06 Gr. **5**



1139 ANCIENT ROMAN BRONZE RING (1ST-5TH CENTURY AD.) 5.73 Gr. **5**



1140 ANCIENT ROMAN BRONZE RING (1ST-5TH CENTURY AD.) 6.6 Gr. **5**



1141 ANCIENT ROMAN BRONZE RING (1ST-5TH CENTURY AD.) 3.63 Gr. **5**



1142 ANCIENT ROMAN BRONZE RING (1ST-5TH CENTURY AD.) 6.42 Gr. **5**



1143 ANCIENT ROMAN BRONZE RING (1ST-5TH CENTURY AD.) 5.25 Gr. **5**



1144 ANCIENT ROMAN BRONZE RING (1ST-5TH CENTURY AD.) 5.8 Gr. **5**



1145 ANCIENT ROMAN BRONZE RING (1ST-5TH CENTURY AD.) 9.38 Gr. **5**



1146 ANCIENT ROMAN BRONZE RING (1ST-5TH CENTURY AD.) 6.65 Gr. **5**



1147 ANCIENT ROMAN BRONZE RING (1ST-5TH CENTURY AD.) 7.39 Gr. **5**



1148 ANCIENT ROMAN BRONZE RING (1ST-5TH CENTURY AD.) 9.34 Gr. **5**



1149 ANCIENT ROMAN SILVER RING (1ST-5TH CENTURY AD.) 8.37 Gr. **5**



1150 ANCIENT ROMAN BRONZE BRACELET (1ST-5TH CENTURY AD.) 97.87 Gr. 8
7.5 mm. **5**



1151 ANCIENT GREEK PB SLING BULLET. (CIRCA 4TH-1ST CENTURY BC). 24.72
Gr. 26.6 mm. **5**



1152 ANCIENT GREEK PB SLING BULLET. (CIRCA 4TH-1ST CENTURY BC). 29.41
Gr. 30 mm. **5**



1153 ANCIENT GREEK PB SLING BULLET. (CIRCA 4TH-1ST CENTURY BC). 30.8 G
r. 27.4 mm. **5**



1154 ANCIENT GREEK PB SLING BULLET. (CIRCA 4TH-1ST CENTURY BC). 33.09 Gr. 27.4 mm. **5**



1155 ANCIENT GREEK PB SLING BULLET. (CIRCA 4TH-1ST CENTURY BC). 35.82 Gr. 33 mm. **5**



1156 ANCIENT GREEK PB SLING BULLET. (CIRCA 4TH-1ST CENTURY BC). 32.79 Gr. 27 mm. **5**



1157 ANCIENT GREEK PB SLING BULLET. (CIRCA 4TH-1ST CENTURY BC). 37.32 Gr. 29 mm. **5**



1158 5 GREEK LOT (1) **5**



1159 7 GREEK LOT (153) **5**



1160 21 GREEK LOT (40) **5**



1161 2 GREEK LOT (41) **5**



1162 4 GREEK (37) **5**



1163 21 GREEK LOT (148)

5



1164 4 GREEK LOT (36)

5



1165 4 GREEK LOT (131)

5



1166 2 GREEK LOT (38)

5



1167 13 MIX COIN LOT (275)

5



1168 18 GREEK LOT (271)

5



1169 5 GREEK LOT (93)

5



1170 7 GREEK LOT (103)

5



1171 17 GREEK LOT (104)

5



1172 21 GREEK LOT (104)

5



1173 12 GREEK LOT (111)

5



1174 18 GREEK LOT (121)

5



1175 8 GREEK LOT (170)

5



1176 10 GREEK LOT (171)

5



1177 15 GREEK LOT (176)

5



1178 12 GREEK LOT (167)

5



1179 4 GREEK LOT (169)

5



1180 12 GREEK LOT (177)

5



1181 9 GREEK LOT (166)

5



1182 12 GREEK LOT (160)

5



1183 15 GREEK LOT (159)

5



1184 15 GREEK LOT (183)

5



1185 15 GREEK LOT (184)

5



1186 15 GREEK LOT (186)

5



1187 11 GREEK LOT (187)

5



1188 20 GREEK LOT (214)

5



1189 20 GREEK LOT (213)

5



1190 20 GREEK LOT (215)

5



1191 15 GREEK LOT (185)

5



1192 15 GREEK LOT (194)

5



1193 15 GREEK LOT (195)

5



1194 15 GREEK LOT (196)

5



1195 15 GREEK LOT (197)

5



1196 15 GREEK LOT (198)

5



1197 15 GREEK LOT (199)

5



1198 11 GREEK LOT (200)

5



1199 15 GREEK LOT (211)

5



1200 12 GREEK LOT (212)

5



1201 20 GREEK LOT (216)

5



1202 20 GREEK LOT (217)

5



1203 16 GREEK LOT (218)

5



1204 9 GREEK LOT (220)

5



1205 12 PROVINCIAL LOT (235)

5



1206 20 PROVINCIAL LOT (204)

5



1207 15 PROVINCIAL LOT (202)

5



1208 15 PROVINCIAL LOT (293)

5



1209 18 ROMAN IMPERIAL (2)

5



1210 15 MIX COIN LOT (269)

5



1211 15 ROMAN IMPERIAL LOT (23)

5



1212 15 ROMAN IMPERIAL LOT (24)

5



1213 15 ROMAN IMPERIAL LOT (27)

5



1214 20 ROMAN IMPERIAL LOT (28)

5



1215 22 ROMAN IMPERIAL LOT (29)

5



1216 20 ROMAN IMPERIAL LOT (99)

5



1217 14 ROMAN IMPERIAL LOT (125)

5



1218 15 MIX COIN LOT (129)

5



1219 6 ROMAN IMPERIAL LOT (132)

5



1220 9 ROMAN IMPERIAL LOT (155)

5



1221 7 ROMAN IMPERIAL LOT (178)

5



1222 16 ROMAN IMPERIAL LOT (156)

5



1223 17 ROMAN IMPERIAL LOT (172)

5



1224 11 ROMAN IMPERIAL LOT (173)

5



1225 19 ROMAN IMPERIAL LOT (174)

5



1226 15 ROMAN IMPERIAL LOT (175)

5



1227 15 ROMAN IMPERIAL LOT (179)

5



1228 15 ROMAN IMPERIAL LOT (180)

5



1229 11 ROMAN IMPERIAL LOT (181)

5



1230 15 ROMAN IMPERIAL LOT (191)

5



1231 15 ROMAN IMPERIAL LOT (192)

5



1232 14 ROMAN IMPERIAL LOT (193)

5



1233 15 ROMAN IMPERIAL LOT (206)

5



1234 20 ROMAN IMPERIAL LOT (207)

5



1235 21 ROMAN IMPERIAL LOT (208)

5



1236 15 ROMAN IMPERIAL LOT (209)

5



1237 18 ROMAN IMPERIAL LOT (210)

5



1238 24 ROMAN IMPERIAL LOT (227)

5



1239 30 ROMAN IMPERIAL LOT (229)

5



1240 30 ROMAN IMPERIAL LOT (230)

5



1241 32 ROMAN IMPERIAL LOT (231)

5



1242 26 ROMAN IMPERIAL LOT (233)

5



1243 50 ROMAN IMPERIAL LOT (237)

5



1244 50 ROMAN IMPERIAL LOT (238)

5



1245 50 ROMAN IMPERIAL LOT (239)

5



1246 50 ROMAN IMPERIAL LOT (240)

5



1247 50 ROMAN IMPERIAL LOT (241)

5



1248 50 ROMAN IMPERIAL LOT (242)

5



1249 50 ROMAN IMPERIAL LOT (243)

5



1250 50 ROMAN IMPERIAL LOT (244)

5



1251 50 ROMAN IMPERIAL LOT (245)

5



1252 50 ROMAN IMPERIAL LOT (246)

5



1253 50 ROMAN IMPERIAL LOT (247)

5



1254 50 ROMAN IMPERIAL LOT (248)

5



1255 50 ROMAN IMPERIAL LOT (249)

5



1256 50 ROMAN IMPERIAL LOT (250)

5



1257 50 ROMAN IMPERIAL LOT (251)

5



1258 50 ROMAN IMPERIAL LOT (252)

5



1259 50 ROMAN IMPERIAL LOT (253)

5



1260 50 ROMAN IMPERIAL LOT (254)

5



1261 50 ROMAN IMPERIAL LOT (255)

5



1262 50 ROMAN IMPERIAL LOT (256)

5



1263 50 ROMAN IMPERIAL LOT (257)

5



1264 50 ROMAN IMPERIAL LOT (258)

5



1265 50 ROMAN IMPERIAL LOT (259)

5



1266 50 ROMAN IMPERIAL LOT (260)

5



1267 50 ROMAN IMPERIAL LOT (261)

5



1268 50 ROMAN IMPERIAL LOT (262)

5

**1269** 50 ROMAN IMPERIAL LOT (263)**5****1270** 50 ROMAN IMPERIAL LOT (264)**5****1271** 50 ROMAN IMPERIAL LOT (265)**5****1272** 50 ROMAN IMPERIAL LOT (266)**5****1273** 30 ROMAN IMPERIAL LOT (267)**5****1274** 12 BYZANTINE LOT (9)**5****1275** 10 BYZANTINE LOT (117)**5****1276** 7 BYZANTINE LOT (154)**5**



1277 12 BYZANTINE LOT (182)

5



1278 17 BYZANTINE LOT (183)

5



1279 15 BYZANTINE LOT (188)

5



1280 15 BYZANTINE LOT (189)

5



1281 19 BYZANTINE LOT (190)

5



1282 12 BYZANTINE LOT (221)

5



1283 15 BYZANTINE LOT (222)

5



1284 5 BYZANTINE LOT (223)

5



1285 19 MIX COIN LOT (224)

5



1286 7 WORLD COIN LOT (284)

5



1287 6 ISLAMIC COIN LOT (10)

5



1288 3 SEAL LOT (268)

5



1289 2 ISLAMIC COIN LOT (161)

5



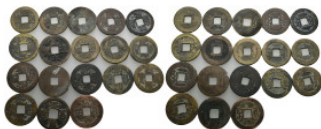
1290 3 SEAL&TESSERA LOT (282)

5



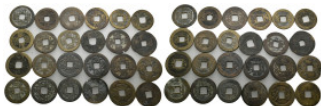
1291 25 LEAD SEAL&TESSERA LOT (133)

5



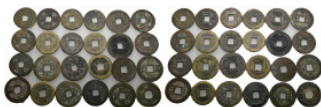
1292 1736-1796. China. Copper cash "Qianlong Emperor" (14 pieces); "Guangxu Emperor" (2 pieces); 1038-1040AD. "Renzong Emperor" (1 piece); 1626-1868AD. Japan. "Kuan Yong Tong Bao" (1 piece). (299)

5



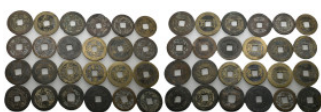
1293 1736-1796. China. Copper cash "Qianlong Emperor" (16 pieces); "Guangxu Emperor" (2 pieces); 1760-1820. China. "Jiaqing Emperor"(6 pieces). (299)

5



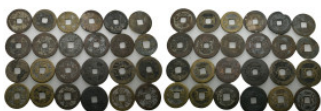
1294 1736-1796. China. Copper cash "Qianlong Emperor" (19 pieces); "Guangxu Emperor" (1 piece); 1760-1820. China. "Jiaqing Emperor"(1 piece); 1782-1850. China. "Daoguang Emperor" (2 pieces); 1633-1891. Korean. "Changping Tong Bao"(1 piece). (297)

5



1295 1736-1796. China. Copper cash "Qianlong Emperor" (16 pieces); "Guangxu Emperor" (1 piece); 1831-1861. China. "Xianfeng Emperor"(1 piece); 1760-1820. China. "Jiaqing Emperor"(3 pieces); 1782-1850. China. "Daoguang Emperor" (1 piece); 1633-1891. Korean. "Changping Tong Bao"(1 piece); 1626-1868. Japan. "Kuan Yong Tong Bao" (1 piece). (296)

5



1296 1736-1796. China. Copper cash "Qianlong Emperor" (16 pieces); "Guangxu Emperor" (2 pieces); 1661-1722. China. "Kangxi Emperor"(1 piece); 1760-1820. China. "Jiaqing Emperor"(2 pieces); 1782-1850. China. "Daoguang Emperor" (1 piece); 1644-1661. China. "Shunzhi Emperor"(1 piece). (295)

5



1297 1736-1796. China. Copper cash “Qianlong Emperor” (22 pieces); “Guangxu Emperor” (4 pieces); 1722-1735. China. “Yongzheng Emperor”(1 piece); 1760-1820. China. “Jiaqing Emperor”(4 pieces); 1782-1850. China. “Daoguang Emperor” (1 piece); 1633-1891. Korean. “Changping Tong Bao”(1 piece); 1626-1868. Japan. “Kuan Yong Tong Bao” (1 piece). (294) **5**



1298 5 ISLAMIC LOT (118) **5**



1299 14 MIX COIN LOT (6) **5**



1300 15 GREEK LOT (7) **5**



1301 15 MIX COIN LOT (8) **5**



1302 15 MIX COIN LOT (277) **5**



1303 17 MIX COIN LOT (270) **5**



1304 17 MIX COIN LOT (274) **5**



1305 19 MIX COIN LOT (276) **5**



1306 20 MIX COIN LOT (272) **5**



1307 20 MIX COIN LOT (278) **5**



1308 25 MIX COIN LOT (25)

5



1309 15 MIX COIN LOT (26)

5



1310 4 MIX COIN LOT (39)

5



1311 4 MIX COIN LOT (85)

5



1312 16 MIX COIN LOT (86)

5



1313 12 MIX COIN LOT (87)

5



1314 16 MIX COIN LOT (88)

5



1315 16 MIX COIN LOT (90)

5



1316 17 MIX COIN LOT (91)

5



1317 17 MIX COIN LOT (92)

5



1318 16 MIX COIN LOT (94)

5



1319 7 MIX COIN LOT (95)

5



1320 6 MIX COIN LOT (96)

5



1321 14 MIX COIN LOT (97)

5



1322 18 MIX COIN LOT (97)

5



1323 20 MIX COIN LOT (98)

5



1324 11 MIX COIN LOT (100)

5



1325 18 MIX COIN LOT (101)

5



1326 6 MIX COIN LOT (102)

5



1327 20 MIX COIN LOT (105)

5



1328 12 MIX COIN LOT (106)

5



1329 17 MIX COIN LOT (108)

5



1330 17 MIX COIN LOT (109)

5



1331 15 MIX COIN LOT (110)

5



1332 10 MIX COIN LOT (116)

5



1333 14 MIX COIN LOT (116)

5



1334 11 MIX COIN LOT (119)

5



1335 16 MIX COIN LOT (122)

5



1336 12 MIX COIN LOT (124)

5



1337 22 MIX COIN LOT (126)

5



1338 17 MIX COIN LOT (127)

5



1339 16 MIX COIN LOT (128)

5



1340 3 MIX COIN LOT (130)

5



1341 7 MIX COIN LOT (146)

5



1342 19 MIX COIN LOT (147)

5



1343 3 MIX COIN LOT (150)

5



1344 2 MIX COIN LOT (151)

5



1345 6 MIX COIN LOT (158)

5



1346 10 MIX COIN LOT (163)

5



1347 4 MIX COIN LOT (165)

5



1348 5 MIX SEAL WEIGHT (144)

5



1349 15 MIX COIN LOT (203)

5



1350 2 MIX COIN LOT (205)

5



1351 20 MIX COIN LOT (225)

5



1352 24 MIX COIN LOT (226)

5



1353 30 ROMAN IMPERIAL COIN (228)

5



1354 15 MIX COIN LOT (232)

5



1355 6 MIX COIN LOT (234)

5



1356 14 MIX COIN LOT (236)

5



1357 2 MIX COIN LOT (279)

5



1358 2 MIX COIN LOT (280)

5



1359 3 MIX COIN LOT (281)

5



1360 6 MIX COIN LOT (283)

5



1361 3 MIX SEAL OBJECT LOT (285)

5



1362 2 MIX COIN LOT (286)

5



1363 2 MIX COIN LOT (287)

5



1364 2 MIX COIN LOT (288)

5



1365 2 MIX COIN LOT (289)

5



1366 3 MIX COIN LOT (201)

5



1367 4 MIX COIN LOT (290)

5



1368 4 MIX COIN LOT (291)

5



1369 3 MIXED LOT (292)

5



1370 10 MIX COIN LOT (35)

5



1371 15 ROMAN PROVINCIAL LOT (157)

5



1372 6 ROMAN PROVINCIAL LOT (168)

5



1373 2 ROMAN PROVINCIAL LOT (219)

5



1374 4 MIX COIN LOT (273)

5



1375 7 ROMAN BRONZE RING LOT (4),

5



1376 10 ROMAN BRONZE RING LOT (34)

5



1377 3 ROMAN BRONZE RING LOT (42)

5



1378 8 ROMAN BRONZE RING LOT (32)

5



1379 3 ROMAN BRONZE RING LOT (65)

5



1380 17 ROMAN BRONZE RING LOT (31)

5



1381 20 ROMAN BRONZE RING LOT (30)

5



1382 15 ROMAN BRONZE RING LOT (20)

5



1383 17 ROMAN BRONZE RING LOT (21)

5



1384 10 ROMAN BRONZE RING LOT (82)

5



1385 13 ROMAN BRONZE RING LOT (74)

5



1386 15 ROMAN BRONZE RING LOT (73)

5



1387 10 ROMAN BRONZE RING LOT (138)

5



1388 8 MIX RING LOT (33)

5



1389 4 ROMAN BRONZE RING LOT (62)

5



1390 3 ROMAN BRONZE RING LOT (63)

5



1391 4 ROMAN BRONZE RING LOT (64)

5



1392 6 ROMAN BRONZE RING LOT (22)

5



1393 6 ROMAN BRONZE RING LOT (136)

5



1394 9 ROMAN BRONZE RING LOT (75)

5



1395 6 ROMAN BRONZE RING LOT (83)

5



1396 3 ROMAN BRONZE RING LOT (137)

5



1397 5 ROMAN BRONZE RING LOT (53)

5



1398 28 ROMAN BRONZE RING LOT (19)

5



1399 3 ROMAN BRONZE RING LOT (69)

5



1400 2 ROMAN OBJECT LOT (35)

5



1401 19 ROMAN BRONZE&SILVER FIBULA LOT (12)

5



1402 10 ROMAN BRONZE FIBULA LOT (15)

5



1403 3 ROMAN BRONZE FIBULE LOT (67)

5



1404 3 ROMAN BRONZE ARROWHEAD LOT (134)

5



1405 3 ROMAN BRONZE ARROWHEAD LOT (61)

5



1406 3 ROMAN BRONZE ARROWHEAD LOT (48)

5



1407 2 ROMAN BRONZE ARROWHEAD LOT (49)

5



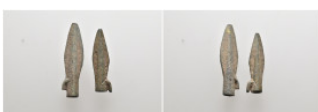
1408 2 ROMAN BRONZE ARROWHEAD LOT (50)

5



1409 2 ROMAN BRONZE ARROWHEAD LOT (45)

5



1410 2 ROMAN BRONZE ARROWHEAD LOT (46)

5



1411 2 ROMAN BRONZE ARROWHEAD LOT (55),

5



1412 2 ROMAN BRONZE ARROWHEAD LOT (56)

5



1413 2 ROMAN BRONZE ARROWHEAD LOT (47)

5



1414 2 ROMAN BRONZE ARROWHEAD LOT (70)

5



1415 2 ROMAN BRONZE ARROWHEAD LOT (59)

5



1416 2 ROMAN BRONZE ARROWHEAD LOT (54)

5



1417 2 ROMAN BRONZE ARROWHEAD LOT (57)

5



1418 2 ROMAN BRONZE ARROWHEAD LOT (58)

5



1419 2 ROMAN BRONZE ARROWHEAD LOT (60)

5



1420 6 ROMAN BRONZE AROOWHEAD LOT (79)

5



1421 11 ROMAN BRONZE ARROWHEAD LOT (84)

5



1422 13 ROMAN BRONZE ARROWHEAD LOT (80)

5



1423 6 ROMAN BRONZE GLADIUS SWORD PENDANT LOT (77)

5



1424 2 ROMAN BRONZE MEDICAL INSTRUMENT LOT (44)

5



1425 3 ROMAN BRONZE OBJECT LOT (51)

5



1426 2 ROMAN BRONZE OBJECT LOT (68)

5



1427 4 ROMAN BRONZE OBJECT LOT (52)

5



1428 3 ROMAN BRONZE OBJECT LOT (43)

5



1429 11 GREEK PB SLING BULLET LOT (72)

5



1430 ANCIENT ROMAN GOLD PLATED ON SILVER (17). GR ?

5



1431 2 ROMAN OBJECT LOT (76)

5



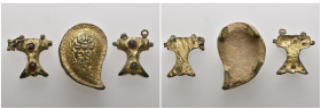
1432 2 ROMAN OBJECT AND COIN LOT (139)

5



1433 3 ROMAN SILVER PENDANT LOT (66)

5



1434 3 ROMAN GOLD-PLATED LOT (149)

5



1435 2 ROMAN BRONZE OBJECT LOT (162)

5



1436 7 BRONZE MIX LOT (5)

5



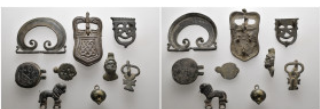
1437 8 BRONZE MIXED LOT (11)

5



1438 10 ROMAN BRONZE MIX LOT (142)

5



1439 9 ROMAN BRONZE MIX LOT (141)

5



1440 10 ROMAN BRONZE MIX LOT (140)

5



1441 9 ROMAN MIXED LOT (135)

5



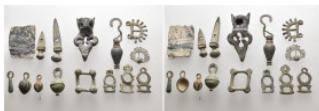
1442 6 ROMAN BRONZE MIX LOT (135)

5



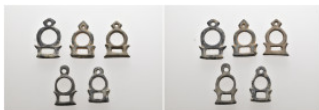
1443 8 ROMAN BRONZ MIX LOT (114)

5



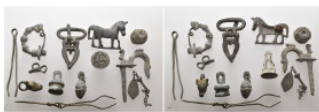
1444 15 ROMAN BRONZE MIX LOT (81)

5



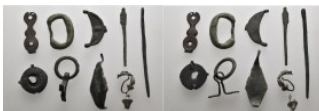
1445 5 ROMAN BRONZE MIX LOT (71)

5



1446 13 ROMAN BRONZE MIX LOT (78)

5



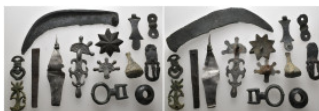
1447 10 ROMAN BRONZE MIX LOT (16)

5



1448 11 ROMAN BRONZE MIX LOT (13)

5



1449 14 ROMAN BRONZE MIX LOT (14)

5



1450 24 ROMAN BRONZE OBJECT MIX LOT (18)

5