



# NBS Auctions

## **Promo Auction 1**

17 September 2023

All prices are starting prices (EUR)  
PDF catalog created by [www.biddr.com](http://www.biddr.com)



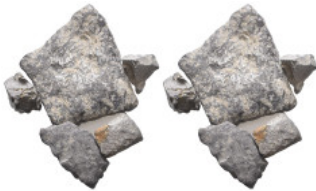
**1** Lot of 5 pieces of AR Hacksilber. Includes: Ingots of various shapes and weights. Circa, 6th - 5th Century BC. Reference: Condition: Very FineWeight: Lot Diameter: Lot

**1**



**2** Lot of 5 pieces of AR Hacksilber. Includes: Ingots of various shapes and weights. Circa, 6th - 5th Century BC. Reference: Condition: Very FineWeight: Lot Diameter: Lot

**1**



**3** Lot of 5 pieces of AR Hacksilber. Includes: Ingots of various shapes and weights. Circa, 6th - 5th Century BC. Reference: Condition: Very FineWeight: Lot Diameter: Lot

**1**



**4** Lot of 4 pieces of AR Hacksilber. Includes: Ingots of various shapes and weights. Circa, 6th - 5th Century BC. Reference: Condition: Very FineWeight: Lot Diameter: Lot

**1**



**5** Lot of 5 pieces of AR Hacksilber. Includes: Ingots of various shapes and weights. Circa, 6th - 5th Century BC. Reference: Condition: Very FineWeight: Lot Diameter: Lot

**1**



**6** Lot of 5 pieces of AR Hacksilber. Includes: Ingots of various shapes and weights. Circa, 6th - 5th Century BC. Reference: Condition: Very FineWeight: Lot Diameter: Lot

**1**



**7** Lot of 5 pieces of AR Hacksilber. Includes: Ingots of various shapes and weights. Circa, 6th - 5th Century BC. Reference: Condition: Very FineWeight: Lot Diameter: Lot

**1**



**8** Lot of 5 pieces of AR Hacksilber. Includes: Ingots of various shapes and weights. Circa, 6th - 5th Century BC. Reference: Condition: Very FineWeight: Lot Diameter: Lot

**1**



**9** Lot of 10 pieces of AR Hacksilber. Includes: Ingots of various shapes and weights. Circa, 6th - 5th Century BC. Reference: Condition: Very FineWeight: Lot Diameter: Lot

**1**



**10** Lot of 15 pieces of AR Hacksilber and Jewelry. Includes: Ingots of various shapes and weights. Circa, 6th - 5th Century BC. Reference: Condition: Very FineWeight: Lot Diameter: Lot

**1**



**11** Lot of 15 pieces of AR Hacksilber and Jewelry. Includes: Ingots of various shapes and weights. Circa, 6th - 5th Century BC. Reference: Condition: Very FineWeight: Lot Diameter: Lot

**1**



**12** Lot of Siver obols Circa, 6th - 5th Century BC. Reference: Condition: Very FineWeight: Lot Diameter: Lot

**1**



**13** Lot of Siver obols Circa, 6th - 5th Century BC. Reference: Condition: Very FineWeight: Lot Diameter: Lot

**1**



**14** Lot of Siver obols Circa, 6th - 5th Century BC. Reference: Condition: Very FineWeight: Lot Diameter: Lot

**1**



**15** Lot of Silver Siglos Circa, 6th - 5th Century BC. Reference:  
Condition: Very FineWeight: Lot Diameter: Lot

**1**



**16** CYPRUS, Kition. Baalmelek II. Circa 425-400 BC. AR Stater  
Reference: Condition: Very FineWeight: 11g Diameter: 20.5mm

**1**



**17** THRACE. Byzantion. Ar. (Circa 387/6-340 BC). Condition: Very  
FineWeight: 2.4g Diameter: 15.4mm

**1**



**18** THRACE. Byzantion. Ar. (Circa 387/6-340 BC). Condition: Very  
FineWeight: 2.5g Diameter: 15mm

**1**



**19** THRACE. Byzantion. Ar. (Circa 387/6-340 BC). Condition: Very  
FineWeight: 2.5g Diameter: 13.6mm

**1**



**20** THRACE. Byzantion. Ar. (Circa 387/6-340 BC). Condition: Very  
FineWeight: 2.4g Diameter: 12.8mm

**1**



**21** THRACE. Byzantion. Ar. (Circa 387/6-340 BC). Condition: Very  
FineWeight: 2.3g Diameter: 14.4mm

**1**





**22** THRACE. Byzantion. Ar. (Circa 387/6-340 BC). Condition: Very FineWeight: 2.3g Diameter:12.8mm

**1**



**23** THRACE. Byzantion. Ar. (Circa 387/6-340 BC). Condition: Very FineWeight: 2.4g Diameter:12.7mm

**1**



**24** THRACE. Byzantion. Ar. (Circa 387/6-340 BC). Condition: Very FineWeight: 2.5g Diameter:12.6mm

**1**



**25** Lot of 5 THRACE. Byzantion. Ar. (Circa 387/6-340 BC). Condition: Very FineWeight: Diameter:

**1**



**26** Cilicia, Tarsos, Stater struck under Satrap Mazaios, ca. 361-334 BC; AR Reference: Condition: Very FineWeight: 10.9g Diameter: 25mm

**1**



**27** PAMPHYLIA, Aspendos. Circa 380/75-330/25 BC. AR Stater Reference: Condition: Very FineWeight: 10.8g Diameter:21.3mm

**1**



**28** MACEDONIAN KINGDOM. Alexander III the Great (336-323 BC). AR Reference: Condition: Very FineWeight: 4.1g Diameter: 17mm

**1**



**29** MACEDONIAN KINGDOM. Alexander III the Great (336-323 BC). AR Reference: Condition: Very FineWeight: 3.9g Diameter:17.3mm

**1**



**30** MACEDONIAN KINGDOM. Alexander III the Great (336-323 BC). AR Reference: Condition: Very FineWeight: 4.1g Diameter:16.7mm

**1**



**31** PHOENICIA, Tyre. Circa 349-311/0 BC. AR Reference: Condition: Very FineWeight: 0.6g Diameter: 10.4mm

**1**



**32** Greek Obol, Ca. 5th-3rd Century BC. AR. Reference: Condition: Very FineWeight: 0.8g Diameter: 10.2mm

**1**



**33** Greek Obol, Ca. 5th-3rd Century BC. AR. Reference: Condition: Very FineWeight: 0.4g Diameter: 9.8mm

**1**



**34** Greek Obol, Ca. 5th-3rd Century BC. AR. Reference: Condition: Very FineWeight: 0.4g Diameter: 7mm

**1**



**35** Greek Obol, Ca. 5th-3rd Century BC. AR. Reference: Condition: Very FineWeight: 0.7g Diameter:9.8mm

**1**



**36** Greek Obol, Ca. 5th-3rd Century BC. AR. Reference:  
Condition: Very FineWeight: 0.8g Diameter:8.4mm

**1**



**37** Greek Obol, Ca. 5th-3rd Century BC. AR. Reference:  
Condition: Very FineWeight: 0.7g Diameter:8.8mm

**1**



**38** Greek Obol, Ca. 5th-3rd Century BC. AR. Reference:  
Condition: Very FineWeight: 0.1g Diameter: 5.7mm

**1**



**39** Greek Obol, Ca. 5th-3rd Century BC. AR. Reference:  
Condition: Very FineWeight: 0.7g Diameter: 10.3mm

**1**



**40** Greek Obol, Ca. 5th-3rd Century BC. AR. Reference:  
Condition: Very FineWeight: 0.7g Diameter: 10.6mm

**1**



**41** Greek Obol, Ca. 5th-3rd Century BC. AR. Reference:  
Condition: Very FineWeight: 0.9g Diameter:9.7mm

**1**



**42** Greek Obol, Ca. 5th-3rd Century BC. AR. Reference:  
Condition: Very FineWeight: 0.4g Diameter:9.5mm

**1**



**43** Greek Obol, Ca. 5th-3rd Century BC. AR. Reference:  
Condition: Very FineWeight: 0.3g Diameter: 9mm

**1**



**44** Greek Obol, Ca. 5th-3rd Century BC. AR. Reference:  
Condition: Very FineWeight: 0.5g Diameter: 7mm

**1**



**45** Greek Obol, Ca. 5th-3rd Century BC. AR. Reference:  
Condition: Very FineWeight: Diameter:

**1**



**46** Greek Obol, Ca. 5th-3rd Century BC. AR. Reference:  
Condition: Very FineWeight: Diameter:

**1**



**47** Greek Obol, Ca. 5th-3rd Century BC. AR. Reference:  
Condition: Very FineWeight: 1g Diameter: 9.8mm

**1**



**48** Greek Obol, Ca. 5th-3rd Century BC. AR. Reference:  
Condition: Very FineWeight: 1.1g Diameter: 8.6mm

**1**



**49** Greek Obol, Ca. 5th-3rd Century BC. AR. Reference:  
Condition: Very FineWeight: 0.1g Diameter: 6.3mm

**1**



**50** Greek Obol, Ca. 5th-3rd Century BC. AR. Reference:  
Condition: Very Fine Weight: 0.6g Diameter: 9.5mm

**1**



**51** Greek Obol, Ca. 5th-3rd Century BC. AR. Reference:  
Condition: Very Fine Weight: 0.7g Diameter: 11.1mm

**1**



**52** Greek Obol, Ca. 5th-3rd Century BC. AR. Reference:  
Condition: Very Fine Weight: 0.6g Diameter: 10mm

**1**



**53** Greek Obol, Ca. 5th-3rd Century BC. AR. Reference:  
Condition: Very Fine Weight: 0.6g Diameter: 10.1mm

**1**



**54** Greek Obol, Ca. 5th-3rd Century BC. AR. Reference:  
Condition: Very Fine Weight: 0.7g Diameter: 10mm

**1**



**55** Greek Obol, Ca. 5th-3rd Century BC. AR. Reference:  
Condition: Very Fine Weight: 0.6g Diameter: 9.5mm

**1**



**56** Greek Obol, Ca. 5th-3rd Century BC. AR. Reference:  
Condition: Very Fine Weight: 0.5g Diameter: 10mm

**1**





**57** Greek Obol, Ca. 5th-3rd Century BC. AR. Reference:  
Condition: Very FineWeight: 0.4g Diameter:9.3mm

**1**



**58** Greek Obol, Ca. 5th-3rd Century BC. AR. Reference:  
Condition: Very FineWeight: 0.6g Diameter:10.1mm

**1**



**59** Greek Obol, Ca. 5th-3rd Century BC. AR. Reference:  
Condition: Very FineWeight: 0.6g Diameter:10.9mm

**1**



**60** Greek Obol, Ca. 5th-3rd Century BC. AR. Reference:  
Condition: Very FineWeight: 0.5g Diameter:10.7mm

**1**



**61** Greek Obol, Ca. 5th-3rd Century BC. AR. Reference:  
Condition: Very FineWeight: 1g Diameter:9.4mm

**1**



**62** Greek Obol, Ca. 5th-3rd Century BC. AR. Reference:  
Condition: Very FineWeight: Diameter:

**1**



**63** Greek Obol, Ca. 5th-3rd Century BC. AR. Reference:  
Condition: Very FineWeight: Diameter:

**1**





**64** Greek Silver Coins. 4th - 3rd century B.C. AR Reference:  
Condition: Very FineWeight: 1.8g Diameter: 11.5mm

**1**



**65** Greek Silver Coins. 4th - 3rd century B.C. AR Reference:  
Condition: Very FineWeight: 2.7g Diameter:17.5mm

**1**



**66** Greek Silver Coins. 4th - 3rd century B.C. AR Reference:  
Condition: Very FineWeight: 5.8g Diameter:18.7mm

**1**



**67** Greek Silver Coins. 4th - 3rd century B.C. AR Reference:  
Condition: Very FineWeight: 3.7g Diameter:17mm

**1**



**68** Greek Silver Coins. 4th - 3rd century B.C. AR Reference:  
Condition: Very FineWeight: 3.7g Diameter:15.1mm

**1**



**69** Greek Silver Coins. 4th - 3rd century B.C. AR Reference:  
Condition: Very FineWeight: 3.6g Diameter:15.9mm

**1**



**70** Greek Silver Coins. 4th - 3rd century B.C. AR Reference:  
Condition: Very FineWeight: 3.8g Diameter:17mm

**1**



**71** Greek Silver Coins. 4th - 3rd century B.C. AR Reference:  
Condition: Very FineWeight: 3.9g Diameter:15.2mm

**1**



**72** Greek Silver Coins. 4th - 3rd century B.C. AR Reference:  
Condition: Very FineWeight: 3.6g Diameter:15.4mm

**1**



**73** Greek Silver Coins. 4th - 3rd century B.C. AR Reference:  
Condition: Very FineWeight: 3.7g Diameter:15.7mm

**1**



**74** Greek Silver Coins. 4th - 3rd century B.C. AR Reference:  
Condition: Very FineWeight: 3.8g Diameter:16mm

**1**



**75** Greek Silver Coins. 4th - 3rd century B.C. AR Reference:  
Condition: Very FineWeight: 3.5g Diameter:15.5mm

**1**



**76** Greek Silver Coins. 4th - 3rd century B.C. AR Reference:  
Condition: Very FineWeight: 3.4g Diameter:16.5mm

**1**



**77** Greek Silver Coins. 4th - 3rd century B.C. AR Reference:  
Condition: Very FineWeight: 3.7g Diameter:18.6mm

**1**



**78** Greek Silver Coins. 4th - 3rd century B.C. AR Reference:  
Condition: Very FineWeight: 4g Diameter: 16.4mm

**1**



**79** Greek Silver Coins. 4th - 3rd century B.C. AR Reference:  
Condition: Very FineWeight: 3.8g Diameter:16.8mm

**1**



**80** Greek Silver Coins. 4th - 3rd century B.C. AR Reference:  
Condition: Very FineWeight: Diameter:

**1**



**81** Greek Silver Coins. 4th - 3rd century B.C. AR Reference:  
Condition: Very FineWeight: Diameter:

**1**



**82** Greek Silver Coins. 4th - 3rd century B.C. AR Reference:  
Condition: Very FineWeight: 15.4g Diameter: 28mm

**1**



**83** Greek Coins. 4th - 3rd century B.C. AE Reference: Condition:  
Very FineWeight: 5.1g Diameter: 16.3mm

**1**



**84** Greek Coins. 4th - 3rd century B.C. AE Reference: Condition:  
Very FineWeight: 6.7g Diameter:17mm

**1**



**85** Greek Coins. 4th - 3rd century B.C. AE Reference: Condition: Very FineWeight: 4.7g Diameter:20.8mm

**1**



**86** Greek Coins. 4th - 3rd century B.C. AE Reference: Condition: Very FineWeight: 4.5g Diameter:18.2mm

**1**



**87** Greek Coins. 4th - 3rd century B.C. AE Reference: Condition: Very FineWeight: 5.9g Diameter:18.2mm

**1**



**88** Greek Coins. 4th - 3rd century B.C. AE Reference: Condition: Very FineWeight: 6g Diameter:17.4mm

**1**



**89** Greek Coins. 4th - 3rd century B.C. AE Reference: Condition: Very FineWeight: 5.6g Diameter: 17.4mm

**1**



**90** Greek Coins. 4th - 3rd century B.C. AE Reference: Condition: Very FineWeight: 4g Diameter:17.3mm

**1**



**91** Greek Coins. 4th - 3rd century B.C. AE Reference: Condition: Very FineWeight: 5.1g Diameter:17.7mm

**1**





**92** Greek Coins. 4th - 3rd century B.C. AE Reference: Condition:  
Very FineWeight: 5.5g Diameter:17.2mm

**1**



**93** Greek Coins. 4th - 3rd century B.C. AE Reference: Condition:  
Very FineWeight: 6.2g Diameter:17.5mm

**1**



**94** Greek Coins. 4th - 3rd century B.C. AE Reference: Condition:  
Very FineWeight: 5.5g Diameter:17.2mm

**1**



**95** Greek Coins. 4th - 3rd century B.C. AE Reference: Condition:  
Very FineWeight: 5.1g Diameter:18.4mm

**1**



**96** Greek Coins. 4th - 3rd century B.C. AE Reference: Condition:  
Very FineWeight: 6.1g Diameter:18.2mm

**1**



**97** Greek Coins. 4th - 3rd century B.C. AE Reference: Condition:  
Very FineWeight: 5.4g Diameter:17.2mm

**1**



**98** Greek Coins. 4th - 3rd century B.C. AE Reference: Condition:  
Very FineWeight: 7.9g Diameter:15.7mm

**1**



**99** Greek Coins. 4th - 3rd century B.C. AE Reference: Condition: Very FineWeight: 1.4g Diameter: 12.6mm

**1**



**100** Greek Coins. 4th - 3rd century B.C. AE Reference: Condition: Very FineWeight: 1.2g Diameter:11.1mm

**1**



**101** Greek Coins. 4th - 3rd century B.C. AE Reference: Condition: Very FineWeight: 3.6g Diameter:14.3mm

**1**



**102** Greek Coins. 4th - 3rd century B.C. AE Reference: Condition: Very FineWeight: 4.5g Diameter:15.6mm

**1**



**103** Greek Coins. 4th - 3rd century B.C. AE Reference: Condition: Very FineWeight: 4g Diameter:16mm

**1**



**104** Greek Coins. 4th - 3rd century B.C. AE Reference: Condition: Very FineWeight: 3.9g Diameter:17.4mm

**1**



**105** Greek Coins. 4th - 3rd century B.C. AE Reference: Condition: Very FineWeight: 3.2g Diameter:16.6mm

**1**





**106** Greek Coins. 4th - 3rd century B.C. AE Reference:  
Condition: Very FineWeight: 3.4g Diameter:14.2mm

**1**



**107** Greek Coins. 4th - 3rd century B.C. AE Reference:  
Condition: Very FineWeight: 4g Diameter:16.2mm

**1**



**108** Greek Coins. 4th - 3rd century B.C. AE Reference:  
Condition: Very FineWeight: 3.8g Diameter:17.1mm

**1**



**109** Greek Coins. 4th - 3rd century B.C. AE Reference:  
Condition: Very FineWeight: 20.7g Diameter:28.3mm

**1**



**110** Greek Coins. 4th - 3rd century B.C. AE Reference:  
Condition: Very FineWeight: 1.9g Diameter:11.3mm

**1**



**111** Greek Coins. 4th - 3rd century B.C. AE Reference:  
Condition: Very FineWeight: 4g Diameter:17mm

**1**



**112** Greek Coins. 4th - 3rd century B.C. AE Reference:  
Condition: Very FineWeight: 10.5g Diameter:22.6mm

**1**



**113** Greek Coins. 4th - 3rd century B.C. AE Reference:  
Condition: Very FineWeight: 7.6g Diameter:19.8mm

**1**



**114** Greek Coins. 4th - 3rd century B.C. AE Reference:  
Condition: Very FineWeight: 8.2g Diameter:19.3mm

**1**



**115** Greek Coins. 4th - 3rd century B.C. AE Reference:  
Condition: Very FineWeight: 8.9g Diameter:20mm

**1**



**116** Greek Coins. 4th - 3rd century B.C. AE Reference:  
Condition: Very FineWeight: 7.5g Diameter:21.1mm

**1**



**117** Greek Coins. 4th - 3rd century B.C. AE Reference:  
Condition: Very FineWeight: 7g Diameter:20.3mm

**1**



**118** Greek Coins. 4th - 3rd century B.C. AE Reference:  
Condition: Very FineWeight: 7.1g Diameter:22mm

**1**



**119** Greek Coins. 4th - 3rd century B.C. AE Reference:  
Condition: Very FineWeight: 7.5g Diameter:22.3mm

**1**



**120** Greek Coins. 4th - 3rd century B.C. AE Reference:  
Condition: Very FineWeight: 7.6g Diameter:22mm

**1**



**121** Greek Coins. 4th - 3rd century B.C. AE Reference:  
Condition: Very FineWeight: 8.1g Diameter:20.3mm

**1**



**122** Greek Coins. 4th - 3rd century B.C. AE Reference:  
Condition: Very FineWeight: 7.6g Diameter:19.8mm

**1**



**123** Greek Coins. 4th - 3rd century B.C. AE Reference:  
Condition: Very FineWeight: 7.2g Diameter:22.4mm

**1**



**124** Greek Coins. 4th - 3rd century B.C. AE Reference:  
Condition: Very FineWeight: 6.8g Diameter:22.5mm

**1**



**125** Greek Coins. 4th - 3rd century B.C. AE Reference:  
Condition: Very FineWeight: 7.2g Diameter:22.1mm

**1**



**126** Greek Coins. 4th - 3rd century B.C. AE Reference:  
Condition: Very FineWeight: 7.5g Diameter:21.4mm

**1**



**127** Greek Coins. 4th - 3rd century B.C. AE Reference:  
Condition: Very FineWeight: 7.4g Diameter:21mm

**1**



**128** Greek Coins. 4th - 3rd century B.C. AE Reference:  
Condition: Very FineWeight: 7.4g Diameter:22.1mm

**1**



**129** Greek Coins. 4th - 3rd century B.C. AE Reference:  
Condition: Very FineWeight: 6.9g Diameter:22mm

**1**



**130** Greek Coins. 4th - 3rd century B.C. AE Reference:  
Condition: Very FineWeight: 4.8g Diameter:20.5mm

**1**



**131** Greek Coins. 4th - 3rd century B.C. AE Reference:  
Condition: Very FineWeight: 7.2g Diameter:20.2mm

**1**



**132** Greek Coins. 4th - 3rd century B.C. AE Reference:  
Condition: Very FineWeight: 7.5g Diameter:22mm

**1**



**133** Greek Coins. 4th - 3rd century B.C. AE Reference:  
Condition: Very FineWeight: 7.6g Diameter:20.5mm

**1**





**134** Greek Coins. 4th - 3rd century B.C. AE Reference:  
Condition: Very FineWeight: 7.6g Diameter:22mm

**1**



**135** Greek Coins. 4th - 3rd century B.C. AE Reference:  
Condition: Very FineWeight: 8g Diameter:21.2mm

**1**



**136** Greek Coins. 4th - 3rd century B.C. AE Reference:  
Condition: Very FineWeight: 6.8g Diameter:23.1mm

**1**



**137** Greek Coins. 4th - 3rd century B.C. AE Reference:  
Condition: Very FineWeight: 7.1g Diameter:21.1mm

**1**



**138** Greek Coins. 4th - 3rd century B.C. AE Reference:  
Condition: Very FineWeight: 7g Diameter:20mm

**1**



**139** Greek Coins. 4th - 3rd century B.C. AE Reference:  
Condition: Very FineWeight: 7.1g Diameter:20.7mm

**1**



**140** Greek Coins. 4th - 3rd century B.C. AE Reference:  
Condition: Very FineWeight: 7.7g Diameter:23.7mm

**1**



**141** Greek Coins. 4th - 3rd century B.C. AE Reference:  
Condition: Very FineWeight: 7.2g Diameter:21.3mm

**1**



**142** Greek Coins. 4th - 3rd century B.C. AE Reference:  
Condition: Very FineWeight: 7.2g Diameter:22mm

**1**



**143** Greek Coins. 4th - 3rd century B.C. AE Reference:  
Condition: Very FineWeight: 7.6g Diameter:20.2mm

**1**



**144** Greek Coins. 4th - 3rd century B.C. AE Reference:  
Condition: Very FineWeight: 5g Diameter:21mm

**1**



**145** Greek Coins. 4th - 3rd century B.C. AE Reference:  
Condition: Very FineWeight: 7.2g Diameter:20.3mm

**1**



**146** Greek Coins. 4th - 3rd century B.C. AE Reference:  
Condition: Very FineWeight: 8.9g Diameter:19.4mm

**1**



**147** Greek Coins. 4th - 3rd century B.C. AE Reference:  
Condition: Very FineWeight: 11.5g Diameter:21.4mm

**1**





**148** Greek Coins. 4th - 3rd century B.C. AE Reference:  
Condition: Very FineWeight: 7.2g Diameter:21.3mm

**1**



**149** Greek Coins. 4th - 3rd century B.C. AE Reference:  
Condition: Very FineWeight: 7g Diameter:18.8mm

**1**



**150** Greek Coins. 4th - 3rd century B.C. AE Reference:  
Condition: Very FineWeight: 6.4g Diameter:19.4mm

**1**



**151** Greek Coins. 4th - 3rd century B.C. AE Reference:  
Condition: Very FineWeight: 7.4g Diameter:19.7mm

**1**



**152** Greek Coins. 4th - 3rd century B.C. AE Reference:  
Condition: Very FineWeight: 1.6g Diameter:12.3mm

**1**



**153** Greek Coins. 4th - 3rd century B.C. AE Reference:  
Condition: Very FineWeight: 1.4g Diameter:11.4mm

**1**



**154** Greek Coins. 4th - 3rd century B.C. AE Reference:  
Condition: Very FineWeight: 1.5g Diameter:12.4mm

**1**



**155** Greek Coins. 4th - 3rd century B.C. AE Reference:  
Condition: Very FineWeight: 1g Diameter:11mm

**1**



**156** Greek Coins. 4th - 3rd century B.C. AE Reference:  
Condition: Very FineWeight: 1.2g Diameter:11.2mm

**1**



**157** Greek Coins. 4th - 3rd century B.C. AE Reference:  
Condition: Very FineWeight: 1.3g Diameter:10mm

**1**



**158** Greek Coins. 4th - 3rd century B.C. AE Reference:  
Condition: Very FineWeight: 1.5g Diameter:10.6mm

**1**



**159** Greek Coins. 4th - 3rd century B.C. AE Reference:  
Condition: Very FineWeight: 1.3g Diameter:9.4mm

**1**



**160** Greek Coins. 4th - 3rd century B.C. AE Reference:  
Condition: Very FineWeight: 0.8g Diameter:9mm

**1**



**161** Greek Coins. 4th - 3rd century B.C. AE Reference:  
Condition: Very FineWeight: 1.2g Diameter:11.5mm

**1**



**162** Greek Coins. 4th - 3rd century B.C. AE Reference:  
Condition: Very FineWeight: 0.9g Diameter:10.4mm

**1**



**163** Greek Coins. 4th - 3rd century B.C. AE Reference:  
Condition: Very FineWeight: 0.6g Diameter:9.4mm

**1**



**164** Greek Coins. 4th - 3rd century B.C. AE Reference:  
Condition: Very FineWeight: 0.7g Diameter:9.7mm

**1**



**165** Greek Coins. 4th - 3rd century B.C. AE Reference:  
Condition: Very FineWeight: 1.3g Diameter:10.3mm

**1**



**166** Greek Coins. 4th - 3rd century B.C. AE Reference:  
Condition: Very FineWeight: 1g Diameter:8.6mm

**1**



**167** Greek Coins. 4th - 3rd century B.C. AE Reference:  
Condition: Very FineWeight: 0.8g Diameter:9.4mm

**1**



**168** Greek Coins. 4th - 3rd century B.C. AE Reference:  
Condition: Very FineWeight: 0.9g Diameter:9.6mm

**1**



**169** Greek Coins. 4th - 3rd century B.C. AE Reference:  
Condition: Very FineWeight: 0.7g Diameter:7.2mm

**1**



**170** Greek Coins. 4th - 3rd century B.C. AE Reference:  
Condition: Very FineWeight: 4.2g Diameter:18.2mm

**1**



**171** Greek Coins. 4th - 3rd century B.C. AE Reference:  
Condition: Very FineWeight: 5.2g Diameter:14.8mm

**1**



**172** Greek Coins. 4th - 3rd century B.C. AE Reference:  
Condition: Very FineWeight: 0.6g Diameter:7.8mm

**1**



**173** Greek Coins. 4th - 3rd century B.C. AE Reference:  
Condition: Very FineWeight: 0.7g Diameter:8.6mm

**1**



**174** Greek Coins. 4th - 3rd century B.C. AE Reference:  
Condition: Very FineWeight: 0.7g Diameter:8.2mm

**1**



**175** Greek Coins. 4th - 3rd century B.C. AE Reference:  
Condition: Very FineWeight: 0.6g Diameter:9mm

**1**



**176** Greek Coins. 4th - 3rd century B.C. AE Reference:  
Condition: Very FineWeight: 0.4g Diameter:8.2mm

**1**



**177** Greek Coins. 4th - 3rd century B.C. AE Reference:  
Condition: Very FineWeight: 0.6g Diameter:8.4mm

**1**



**178** Greek Coins. 4th - 3rd century B.C. AE Reference:  
Condition: Very FineWeight: 0.5g Diameter:8.3mm

**1**



**179** Greek Coins. 4th - 3rd century B.C. AE Reference:  
Condition: Very FineWeight: 0.6g Diameter:7.6mm

**1**



**180** Greek Coins. 4th - 3rd century B.C. AE Reference:  
Condition: Very FineWeight: 0.7g Diameter:8mm

**1**



**181** Greek Coins. 4th - 3rd century B.C. AE Reference:  
Condition: Very FineWeight: 0.5g Diameter:7.9mm

**1**



**182** Greek Coins. 4th - 3rd century B.C. AE Reference:  
Condition: Very FineWeight: 0.5g Diameter:8.5mm

**1**





**183** Greek Coins. 4th - 3rd century B.C. AE Reference:  
Condition: Very FineWeight: 0.6g Diameter:7.7mm

**1**



**184** Greek Coins. 4th - 3rd century B.C. AE Reference:  
Condition: Very FineWeight: 0.6g Diameter:8mm

**1**



**185** Greek Coins. 4th - 3rd century B.C. AE Reference:  
Condition: Very FineWeight: 0.6g Diameter:8.2mm

**1**



**186** Greek Coins. 4th - 3rd century B.C. AE Reference:  
Condition: Very FineWeight: 0.7g Diameter:8.4mm

**1**



**187** Greek Coins. 4th - 3rd century B.C. AE Reference:  
Condition: Very FineWeight: 0.7g Diameter:7.8mm

**1**



**188** Greek Coins. 4th - 3rd century B.C. AE Reference:  
Condition: Very FineWeight: 0.6g Diameter:8.1mm

**1**



**189** Greek Coins. 4th - 3rd century B.C. AE Reference:  
Condition: Very FineWeight: 1.6g Diameter:11.5mm

**1**





**190** Greek Coins. 4th - 3rd century B.C. AE Reference:  
Condition: Very FineWeight: 1.1g Diameter:11mm

**1**



**191** Greek Coins. 4th - 3rd century B.C. AE Reference:  
Condition: Very FineWeight: 0.9g Diameter:10.4mm

**1**



**192** Greek Coins. 4th - 3rd century B.C. AE Reference:  
Condition: Very FineWeight: 1.1g Diameter:11.5mm

**1**



**193** Greek Coins. 4th - 3rd century B.C. AE Reference:  
Condition: Very FineWeight: 3.5g Diameter:16.6mm

**1**



**194** Greek Coins. 4th - 3rd century B.C. AE Reference:  
Condition: Very FineWeight: 1.8g Diameter:12.7mm

**1**



**195** Greek Coins. 4th - 3rd century B.C. AE Reference:  
Condition: Very FineWeight: 2g Diameter:14mm

**1**



**196** Greek Coins. 4th - 3rd century B.C. AE Reference:  
Condition: Very FineWeight: 2.3g Diameter:14.1mm

**1**



**197** Greek Coins. 4th - 3rd century B.C. AE Reference:  
Condition: Very FineWeight: 3.7g Diameter:15.4mm

**1**



**198** Greek Coins. 4th - 3rd century B.C. AE Reference:  
Condition: Very FineWeight: 3.8g Diameter:13.7mm

**1**



**199** Greek Coins. 4th - 3rd century B.C. AE Reference:  
Condition: Very FineWeight: 5.6g Diameter:15mm

**1**



**200** Greek Coins. 4th - 3rd century B.C. AE Reference:  
Condition: Very FineWeight: 3.4g Diameter:14.5mm

**1**



**201** Greek Coins. 4th - 3rd century B.C. AE Reference:  
Condition: Very FineWeight: 4.5g Diameter:15.4mm

**1**



**202** Greek Coins. 4th - 3rd century B.C. AE Reference:  
Condition: Very FineWeight: 6.4g Diameter:15.3mm

**1**



**203** Greek Coins. 4th - 3rd century B.C. AE Reference:  
Condition: Very FineWeight: 5.3g Diameter:16.8mm

**1**



**204** Greek Coins. 4th - 3rd century B.C. AE Reference:  
Condition: Very FineWeight: 6.5g Diameter:16.8mm

**1**



**205** Greek Coins. 4th - 3rd century B.C. AE Reference:  
Condition: Very FineWeight: 5.8g Diameter:16.8mm

**1**



**206** Greek Coins. 4th - 3rd century B.C. AE Reference:  
Condition: Very FineWeight: 6.3g Diameter:16mm

**1**



**207** Greek Coins. 4th - 3rd century B.C. AE Reference:  
Condition: Very FineWeight: 4.6g Diameter:14.4mm

**1**



**208** Greek Coins. 4th - 3rd century B.C. AE Reference:  
Condition: Very FineWeight: 3.9g Diameter:14.3mm

**1**



**209** Greek Coins. 4th - 3rd century B.C. AE Reference:  
Condition: Very FineWeight: 3.6g Diameter:17.8mm

**1**



**210** Greek Coins. 4th - 3rd century B.C. AE Reference:  
Condition: Very FineWeight: 3.8g Diameter:16.4mm

**1**



**211** Greek Coins. 4th - 3rd century B.C. AE Reference:  
Condition: Very FineWeight: 2.5g Diameter:13.1mm

**1**



**212** Greek Coins. 4th - 3rd century B.C. AE Reference:  
Condition: Very FineWeight: 2.8g Diameter:13.2mm

**1**



**213** Greek Coins. 4th - 3rd century B.C. AE Reference:  
Condition: Very FineWeight: 4g Diameter:15.6mm

**1**



**214** Greek Coins. 4th - 3rd century B.C. AE Reference:  
Condition: Very FineWeight: 3.9g Diameter:15.3mm

**1**



**215** Greek Coins. 4th - 3rd century B.C. AE Reference:  
Condition: Very FineWeight: 2.6g Diameter:12.5mm

**1**



**216** Greek Coins. 4th - 3rd century B.C. AE Reference:  
Condition: Very FineWeight: 4g Diameter:13.2mm

**1**



**217** Greek Coins. 4th - 3rd century B.C. AE Reference:  
Condition: Very FineWeight: 1.6g Diameter:11.8mm

**1**



**218** Greek Coins. 4th - 3rd century B.C. AE Reference:  
Condition: Very FineWeight: 1.1g Diameter:10.6mm

**1**



**219** Greek Coins. 4th - 3rd century B.C. AE Reference:  
Condition: Very FineWeight: 1.8g Diameter:11.8mm

**1**



**220** Greek Coins. 4th - 3rd century B.C. AE Reference:  
Condition: Very FineWeight: 1.9g Diameter:12.1mm

**1**



**221** Greek Coins. 4th - 3rd century B.C. AE Reference:  
Condition: Very FineWeight: 1.2g Diameter:10.5mm

**1**



**222** Greek Coins. 4th - 3rd century B.C. AE Reference:  
Condition: Very FineWeight: 1.8g Diameter:11.7mm

**1**



**223** Greek Coins. 4th - 3rd century B.C. AE Reference:  
Condition: Very FineWeight: 2.3g Diameter:12.2mm

**1**



**224** Greek Coins. 4th - 3rd century B.C. AE Reference:  
Condition: Very FineWeight: 3.6g Diameter:16.2mm

**1**





**225** Greek Coins. 4th - 3rd century B.C. AE Reference:  
Condition: Very FineWeight: 1.7g Diameter:12.2mm

**1**



**226** Greek Coins. 4th - 3rd century B.C. AE Reference:  
Condition: Very FineWeight: 3.8g Diameter:15mm

**1**



**227** Greek Coins. 4th - 3rd century B.C. AE Reference:  
Condition: Very FineWeight: 8.3g Diameter:18mm

**1**



**228** Greek Coins. 4th - 3rd century B.C. AE Reference:  
Condition: Very FineWeight: 3.4g Diameter:14.4mm

**1**



**229** Greek Coins. 4th - 3rd century B.C. AE Reference:  
Condition: Very FineWeight: 3g Diameter:14.1mm

**1**



**230** Greek Coins. 4th - 3rd century B.C. AE Reference:  
Condition: Very FineWeight: 8.2g Diameter:21mm

**1**



**231** Greek Coins. 4th - 3rd century B.C. AE Reference:  
Condition: Very FineWeight: 6.6g Diameter:19.8mm

**1**



**232** Greek Coins. 4th - 3rd century B.C. AE Reference:  
Condition: Very FineWeight: 3.3g Diameter:16mm

**1**



**233** Greek Coins. 4th - 3rd century B.C. AE Reference:  
Condition: Very FineWeight: 3.1g Diameter:13.8mm

**1**



**234** Greek Coins. 4th - 3rd century B.C. AE Reference:  
Condition: Very FineWeight: 1.1g Diameter:10.4mm

**1**



**235** Greek Coins. 4th - 3rd century B.C. AE Reference:  
Condition: Very FineWeight: 3.1g Diameter:15mm

**1**



**236** Greek Coins. 4th - 3rd century B.C. AE Reference:  
Condition: Very FineWeight: 7.7g Diameter:20mm

**1**



**237** Greek Coins. 4th - 3rd century B.C. AE Reference:  
Condition: Very FineWeight: 6.9g Diameter:23.4mm

**1**



**238** Greek Coins. 4th - 3rd century B.C. AE Reference:  
Condition: Very FineWeight: 7.7g Diameter:21.6mm

**1**



**239** Greek Coins. 4th - 3rd century B.C. AE Reference:  
Condition: Very FineWeight: 3g Diameter:16.7mm

**1**



**240** Greek Coins. 4th - 3rd century B.C. AE Reference:  
Condition: Very FineWeight: 8.2g Diameter:19.5mm

**1**



**241** Greek Coins. 4th - 3rd century B.C. AE Reference:  
Condition: Very FineWeight: 2g Diameter:11.5mm

**1**



**242** Greek Coins. 4th - 3rd century B.C. AE Reference:  
Condition: Very FineWeight: 3.5g Diameter:16.7mm

**1**



**243** Greek Coins. 4th - 3rd century B.C. AE Reference:  
Condition: Very FineWeight: 2.1g Diameter:14.8mm

**1**



**244** Greek Coins. 4th - 3rd century B.C. AE Reference:  
Condition: Very FineWeight: 1.9g Diameter:13mm

**1**



**245** Greek Coins. 4th - 3rd century B.C. AE Reference:  
Condition: Very FineWeight: 5.6g Diameter:21.2mm

**1**



**246** Greek Coins. 4th - 3rd century B.C. AE Reference:  
Condition: Very FineWeight: 3.2g Diameter:14mm

**1**



**247** Greek Coins. 4th - 3rd century B.C. AE Reference:  
Condition: Very FineWeight: 4g Diameter:16.4mm

**1**



**248** Greek Coins. 4th - 3rd century B.C. AE Reference:  
Condition: Very FineWeight: 1g Diameter:8.3mm

**1**



**249** Greek Coins. 4th - 3rd century B.C. AE Reference:  
Condition: Very FineWeight: 2g Diameter:12.3mm

**1**



**250** Greek Coins. 4th - 3rd century B.C. AE Reference:  
Condition: Very FineWeight: 2.9g Diameter:14.2mm

**1**



**251** Greek Coins. 4th - 3rd century B.C. AE Reference:  
Condition: Very FineWeight: 4.5g Diameter:14mm

**1**



**252** Greek Coins. 4th - 3rd century B.C. AE Reference:  
Condition: Very FineWeight: 5.7g Diameter:16.3mm

**1**



**253** Greek Coins. 4th - 3rd century B.C. AE Reference:  
Condition: Very FineWeight: 1.4g Diameter:11.7mm

**1**



**254** Greek Coins. 4th - 3rd century B.C. AE Reference:  
Condition: Very FineWeight: 1.8g Diameter:12.7mm

**1**



**255** Greek Coins. 4th - 3rd century B.C. AE Reference:  
Condition: Very FineWeight: 2g Diameter:11.8mm

**1**



**256** Greek Coins. 4th - 3rd century B.C. AE Reference:  
Condition: Very FineWeight: 1g Diameter:9.4mm

**1**



**257** Greek Coins. 4th - 3rd century B.C. AE Reference:  
Condition: Very FineWeight: 1g Diameter:9.4mm

**1**



**258** Greek Coins. 4th - 3rd century B.C. AE Reference:  
Condition: Very FineWeight: 1.8g Diameter:12.8mm

**1**



**259** Greek Coins. 4th - 3rd century B.C. AE Reference:  
Condition: Very FineWeight: 6.1g Diameter:16.5mm

**1**





**260** Greek Coins. 4th - 3rd century B.C. AE Reference:  
Condition: Very FineWeight: 2.5g Diameter:14.1mm

**1**



**261** Greek Coins. 4th - 3rd century B.C. AE Reference:  
Condition: Very FineWeight: 3.2g Diameter:16.6mm

**1**



**262** Greek Coins. 4th - 3rd century B.C. AE Reference:  
Condition: Very FineWeight: 2.5g Diameter:16mm

**1**



**263** Greek Coins. 4th - 3rd century B.C. AE Reference:  
Condition: Very FineWeight: 6.9g Diameter:19.4mm

**1**



**264** Greek Coins. 4th - 3rd century B.C. AE Reference:  
Condition: Very FineWeight: 5.6g Diameter:20.8mm

**1**



**265** Greek Coins. 4th - 3rd century B.C. AE Reference:  
Condition: Very FineWeight: 8.2g Diameter:21.6mm

**1**



**266** Greek Coins. 4th - 3rd century B.C. AE Reference:  
Condition: Very FineWeight: 7.5g Diameter:20.2mm

**1**



**267** Greek Coins. 4th - 3rd century B.C. AE Reference:  
Condition: Very FineWeight: 7g Diameter:21mm

**1**



**268** Greek Coins. 4th - 3rd century B.C. AE Reference:  
Condition: Very FineWeight: 8.4g Diameter:20.8mm

**1**



**269** Greek Coins. 4th - 3rd century B.C. AE Reference:  
Condition: Very FineWeight: 6g Diameter:20.3mm

**1**



**270** Greek Coins. 4th - 3rd century B.C. AE Reference:  
Condition: Very FineWeight: 4.1g Diameter:16.2mm

**1**



**271** Greek Coins. 4th - 3rd century B.C. AE Reference:  
Condition: Very FineWeight: 4.3g Diameter:18.8mm

**1**



**272** Greek Coins. 4th - 3rd century B.C. AE Reference:  
Condition: Very FineWeight: 4g Diameter:18mm

**1**



**273** Greek Coins. 4th - 3rd century B.C. AE Reference:  
Condition: Very FineWeight: 4.7g Diameter:17.4mm

**1**



**274** Greek Coins. 4th - 3rd century B.C. AE Reference:  
Condition: Very FineWeight: 3.8g Diameter:15.7mm

**1**



**275** Greek Coins. 4th - 3rd century B.C. AE Reference:  
Condition: Very FineWeight: 4.3g Diameter:17.6mm

**1**



**276** Greek Coins. 4th - 3rd century B.C. AE Reference:  
Condition: Very FineWeight: 4.7g Diameter:16.5mm

**1**



**277** Greek Coins. 4th - 3rd century B.C. AE Reference:  
Condition: Very FineWeight: 4.4g Diameter:15.3mm

**1**



**278** Greek Coins. 4th - 3rd century B.C. AE Reference:  
Condition: Very FineWeight: 3.6g Diameter:17.2mm

**1**



**279** Greek Coins. 4th - 3rd century B.C. AE Reference:  
Condition: Very FineWeight: 5.4g Diameter:19.3mm

**1**



**280** Greek Coins. 4th - 3rd century B.C. AE Reference:  
Condition: Very FineWeight: 5.5g Diameter:20.3mm

**1**



**281** Greek Coins. 4th - 3rd century B.C. AE Reference:  
Condition: Very FineWeight: 5.3g Diameter:19.2mm

**1**



**282** Greek Coins. 4th - 3rd century B.C. AE Reference:  
Condition: Very FineWeight: 5.2g Diameter:19.2mm

**1**



**283** Greek Coins. 4th - 3rd century B.C. AE Reference:  
Condition: Very FineWeight: 5.4g Diameter:20mm

**1**



**284** Greek Coins. 4th - 3rd century B.C. AE Reference:  
Condition: Very FineWeight: 7.4g Diameter:21.5mm

**1**



**285** Greek Coins. 4th - 3rd century B.C. AE Reference:  
Condition: Very FineWeight: 2.7g Diameter:14.7mm

**1**



**286** Greek Coins. 4th - 3rd century B.C. AE Reference:  
Condition: Very FineWeight: 8.2g Diameter:22.4mm

**1**



**287** Greek Coins. 4th - 3rd century B.C. AE Reference:  
Condition: Very FineWeight: 7.3g Diameter:20.4mm

**1**





**288** Greek Coins. 4th - 3rd century B.C. AE Reference:  
Condition: Very FineWeight: 7.5g Diameter:20.2mm

**1**



**289** Greek Coins. 4th - 3rd century B.C. AE Reference:  
Condition: Very FineWeight: 5g Diameter:18.7mm

**1**



**290** Greek Coins. 4th - 3rd century B.C. AE Reference:  
Condition: Very FineWeight: 6.5g Diameter:21.6mm

**1**



**291** Greek Coins. 4th - 3rd century B.C. AE Reference:  
Condition: Very FineWeight: 2.4g Diameter:13.4mm

**1**



**292** Greek Coins. 4th - 3rd century B.C. AE Reference:  
Condition: Very FineWeight: 8.6g Diameter:18.4mm

**1**



**293** Greek Coins. 4th - 3rd century B.C. AE Reference:  
Condition: Very FineWeight: 3.6g Diameter:16.8mm

**1**



**294** Greek Coins. 4th - 3rd century B.C. AE Reference:  
Condition: Very FineWeight: 3.1g Diameter:14.1mm

**1**





**295** Greek Coins. 4th - 3rd century B.C. AE Reference:  
Condition: Very FineWeight: 3.6g Diameter:18.1mm

**1**



**296** Greek Coins. 4th - 3rd century B.C. AE Reference:  
Condition: Very FineWeight: 4.5g Diameter:16.6mm

**1**



**297** Greek Coins. 4th - 3rd century B.C. AE Reference:  
Condition: Very FineWeight: 3.7g Diameter:16.2mm

**1**



**298** Greek Coins. 4th - 3rd century B.C. AE Reference:  
Condition: Very FineWeight: 3.6g Diameter:16.2mm

**1**



**299** Greek Coins. 4th - 3rd century B.C. AE Reference:  
Condition: Very FineWeight: 3.9g Diameter:16.6mm

**1**



**300** Greek Coins. 4th - 3rd century B.C. AE Reference:  
Condition: Very FineWeight: 7.5g Diameter:21.6mm

**1**



**301** Greek Coins. 4th - 3rd century B.C. AE Reference:  
Condition: Very FineWeight: 5.6g Diameter:20mm

**1**



**302** Greek Coins. 4th - 3rd century B.C. AE Reference:  
Condition: Very FineWeight: 4.4g Diameter:16.6mm

**1**



**303** Greek Coins. 4th - 3rd century B.C. AE Reference:  
Condition: Very FineWeight: 4.6g Diameter:18.5mm

**1**



**304** Greek Coins. 4th - 3rd century B.C. AE Reference:  
Condition: Very FineWeight: 6.1g Diameter:17.8mm

**1**



**305** Greek Coins. 4th - 3rd century B.C. AE Reference:  
Condition: Very FineWeight: 3.6g Diameter:18.3mm

**1**



**306** Greek Coins. 4th - 3rd century B.C. AE Reference:  
Condition: Very FineWeight: 3.7g Diameter:17.8mm

**1**



**307** Greek Coins. 4th - 3rd century B.C. AE Reference:  
Condition: Very FineWeight: 8.9g Diameter:19.6mm

**1**



**308** Greek Coins. 4th - 3rd century B.C. AE Reference:  
Condition: Very FineWeight: 6g Diameter:18.5mm

**1**



**309** Greek Coins. 4th - 3rd century B.C. AE Reference:  
Condition: Very FineWeight: 6g Diameter:18.6mm

**1**



**310** Greek Coins. 4th - 3rd century B.C. AE Reference:  
Condition: Very FineWeight: 5g Diameter:18.7mm

**1**



**311** Greek Coins. 4th - 3rd century B.C. AE Reference:  
Condition: Very FineWeight: 6.4g Diameter:19mm

**1**



**312** Greek Coins. 4th - 3rd century B.C. AE Reference:  
Condition: Very FineWeight: 5.1g Diameter:18mm

**1**



**313** Greek Coins. 4th - 3rd century B.C. AE Reference:  
Condition: Very FineWeight: 8g Diameter:22.1mm

**1**



**314** Greek Coins. 4th - 3rd century B.C. AE Reference:  
Condition: Very FineWeight: 5.5g Diameter:18.5mm

**1**



**315** Greek Coins. 4th - 3rd century B.C. AE Reference:  
Condition: Very FineWeight: 5.9g Diameter:18.1mm

**1**



**316** Greek Coins. 4th - 3rd century B.C. AE Reference:  
Condition: Very FineWeight: 6.1g Diameter:18.2mm

**1**



**317** Greek Coins. 4th - 3rd century B.C. AE Reference:  
Condition: Very FineWeight: 8g Diameter:19.6mm

**1**



**318** Greek Coins. 4th - 3rd century B.C. AE Reference:  
Condition: Very FineWeight: 5.4g Diameter:17.6mm

**1**



**319** Greek Coins. 4th - 3rd century B.C. AE Reference:  
Condition: Very FineWeight: 6.1g Diameter:18.3mm

**1**



**320** Greek Coins. 4th - 3rd century B.C. AE Reference:  
Condition: Very FineWeight: 7.9g Diameter:20.3mm

**1**



**321** Greek Coins. 4th - 3rd century B.C. AE Reference:  
Condition: Very FineWeight: 9.5g Diameter:20mm

**1**



**322** Greek Coins. 4th - 3rd century B.C. AE Reference:  
Condition: Very FineWeight: 7.4g Diameter:18.2mm

**1**





**323** Greek Coins. 4th - 3rd century B.C. AE Reference:  
Condition: Very FineWeight: 3.4g Diameter:15.2mm

**1**



**324** Greek Coins. 4th - 3rd century B.C. AE Reference:  
Condition: Very FineWeight: 7.3g Diameter:18.2mm

**1**



**325** Greek Coins. 4th - 3rd century B.C. AE Reference:  
Condition: Very FineWeight: 6.9g Diameter:18.6mm

**1**



**326** Greek Coins. 4th - 3rd century B.C. AE Reference:  
Condition: Very FineWeight: 6.1g Diameter:19.1mm

**1**



**327** Greek Coins. 4th - 3rd century B.C. AE Reference:  
Condition: Very FineWeight: 7.2g Diameter:19.8mm

**1**



**328** Greek Coins. 4th - 3rd century B.C. AE Reference:  
Condition: Very FineWeight: 5g Diameter:17.4mm

**1**



**329** Greek Coins. 4th - 3rd century B.C. AE Reference:  
Condition: Very FineWeight: 8.5g Diameter:18.1mm

**1**





**330** Greek Coins. 4th - 3rd century B.C. AE Reference:  
Condition: Very FineWeight: 5.3g Diameter:18.3mm

**1**



**331** Greek Coins. 4th - 3rd century B.C. AE Reference:  
Condition: Very FineWeight: 2.6g Diameter:13.9mm

**1**



**332** Greek Coins. 4th - 3rd century B.C. AE Reference:  
Condition: Very FineWeight: 3.2g Diameter:15.8mm

**1**



**333** Greek Coins. 4th - 3rd century B.C. AE Reference:  
Condition: Very FineWeight: 7.3g Diameter:21.2mm

**1**



**334** Greek Coins. 4th - 3rd century B.C. AE Reference:  
Condition: Very FineWeight: 8g Diameter:22.2mm

**1**



**335** Greek Coins. 4th - 3rd century B.C. AE Reference:  
Condition: Very FineWeight: 6g Diameter:16.7mm

**1**



**336** Greek Coins. 4th - 3rd century B.C. AE Reference:  
Condition: Very FineWeight: 6.1g Diameter:18.5mm

**1**



**337** Greek Coins. 4th - 3rd century B.C. AE Reference:  
Condition: Very FineWeight: 4.2g Diameter:16.2mm

**1**



**338** Greek Coins. 4th - 3rd century B.C. AE Reference:  
Condition: Very FineWeight: 4.6g Diameter:20mm

**1**



**339** Greek Coins. 4th - 3rd century B.C. AE Reference:  
Condition: Very FineWeight: 5.9g Diameter:17.4mm

**1**



**340** Greek Coins. 4th - 3rd century B.C. AE Reference:  
Condition: Very FineWeight: 4.7g Diameter:17.8mm

**1**



**341** Greek Coins. 4th - 3rd century B.C. AE Reference:  
Condition: Very FineWeight: 5.1g Diameter:18mm

**1**



**342** Greek Coins. 4th - 3rd century B.C. AE Reference:  
Condition: Very FineWeight: 6.3g Diameter:18.5mm

**1**



**343** Greek Coins. 4th - 3rd century B.C. AE Reference:  
Condition: Very FineWeight: 7.9g Diameter:21mm

**1**



**344** Greek Coins. 4th - 3rd century B.C. AE Reference:  
Condition: Very FineWeight: 3.9g Diameter:15.8mm

**1**



**345** Greek Coins. 4th - 3rd century B.C. AE Reference:  
Condition: Very FineWeight: 4.7g Diameter:16.2mm

**1**



**346** Greek Coins. 4th - 3rd century B.C. AE Reference:  
Condition: Very FineWeight: 1.7g Diameter:14.7mm

**1**



**347** Greek Coins. 4th - 3rd century B.C. AE Reference:  
Condition: Very FineWeight: 8.7g Diameter:21.4mm

**1**



**348** Greek Coins. 4th - 3rd century B.C. AE Reference:  
Condition: Very FineWeight: 16.4g Diameter:27.3mm

**1**



**349** Greek Coins. 4th - 3rd century B.C. AE Reference:  
Condition: Very FineWeight: 5.3g Diameter:15.7mm

**1**



**350** Greek Coins. 4th - 3rd century B.C. AE Reference:  
Condition: Very FineWeight: 4.2g Diameter:16mm

**1**



**351** Greek Coins. 4th - 3rd century B.C. AE Reference:  
Condition: Very FineWeight: 3.1g Diameter:13.6mm

**1**



**352** Greek Coins. 4th - 3rd century B.C. AE Reference:  
Condition: Very FineWeight: 3.9g Diameter:17mm

**1**



**353** Greek Coins. 4th - 3rd century B.C. AE Reference:  
Condition: Very FineWeight: 2.4g Diameter:13.5mm

**1**



**354** Greek Coins. 4th - 3rd century B.C. AE Reference:  
Condition: Very FineWeight: 1.9g Diameter:10.5mm

**1**



**355** Greek Coins. 4th - 3rd century B.C. AE Reference:  
Condition: Very FineWeight: 0.8g Diameter:8.1mm

**1**



**356** Greek Coins. 4th - 3rd century B.C. AE Reference:  
Condition: Very FineWeight: 2.7g Diameter:17.4mm

**1**



**357** Greek Coins. 4th - 3rd century B.C. AE Reference:  
Condition: Very FineWeight: 5.6g Diameter:18.8mm

**1**





**358** Greek Coins. 4th - 3rd century B.C. AE Reference:  
Condition: Very FineWeight: 7.3g Diameter:21.3mm

**1**



**359** Greek Coins. 4th - 3rd century B.C. AE Reference:  
Condition: Very FineWeight: 7.3g Diameter:22.3mm

**1**



**360** Greek Coins. 4th - 3rd century B.C. AE Reference:  
Condition: Very FineWeight: 7.6g Diameter:19mm

**1**



**361** Greek Coins. 4th - 3rd century B.C. AE Reference:  
Condition: Very FineWeight: 7.5g Diameter:19.6mm

**1**



**362** Greek Coins. 4th - 3rd century B.C. AE Reference:  
Condition: Very FineWeight: 7.9g Diameter:18.5mm

**1**



**363** Greek Coins. 4th - 3rd century B.C. AE Reference:  
Condition: Very FineWeight: 6.4g Diameter:20.2mm

**1**



**364** Greek Coins. 4th - 3rd century B.C. AE Reference:  
Condition: Very FineWeight: 7g Diameter:19mm

**1**





**365** Greek Coins. 4th - 3rd century B.C. AE Reference:  
Condition: Very FineWeight: 7.4g Diameter:18.6mm

**1**



**366** Greek Coins. 4th - 3rd century B.C. AE Reference:  
Condition: Very FineWeight: 5.9g Diameter:17.2mm

**1**



**367** Greek Coins. 4th - 3rd century B.C. AE Reference:  
Condition: Very FineWeight: 4.8g Diameter:21.1mm

**1**



**368** Greek Coins. 4th - 3rd century B.C. AE Reference:  
Condition: Very FineWeight: 13.5g Diameter:25.6mm

**1**



**369** Greek Coins. 4th - 3rd century B.C. AE Reference:  
Condition: Very FineWeight: 10.8g Diameter:22.5mm

**1**



**370** Greek Coins. 4th - 3rd century B.C. AE Reference:  
Condition: Very FineWeight: 9.2g Diameter:21.5mm

**1**



**371** Greek Coins. 4th - 3rd century B.C. AE Reference:  
Condition: Very FineWeight: 10g Diameter:22.1mm

**1**



**372** Greek Coins. 4th - 3rd century B.C. AE Reference:  
Condition: Very FineWeight: 3.7g Diameter:17.5mm

**1**



**373** Greek Coins. 4th - 3rd century B.C. AE Reference:  
Condition: Very FineWeight: 4.2g Diameter:16.6mm

**1**



**374** Greek Coins. 4th - 3rd century B.C. AE Reference:  
Condition: Very FineWeight: 4.6g Diameter:18.6mm

**1**



**375** Greek Coins. 4th - 3rd century B.C. AE Reference:  
Condition: Very FineWeight: 4.9g Diameter:17.5mm

**1**



**376** Greek Coins. 4th - 3rd century B.C. AE Reference:  
Condition: Very FineWeight: 3.2g Diameter:16.5mm

**1**



**377** Greek Coins. 4th - 3rd century B.C. AE Reference:  
Condition: Very FineWeight: 3.6g Diameter:15mm

**1**



**378** Greek Coins. 4th - 3rd century B.C. AE Reference:  
Condition: Very FineWeight: 3g Diameter:14.4mm

**1**



**379** Greek Coins. 4th - 3rd century B.C. AE Reference:  
Condition: Very FineWeight: 6.6g Diameter:19mm

**1**



**380** Greek Coins. 4th - 3rd century B.C. AE Reference:  
Condition: Very FineWeight: 7.8g Diameter:18.5mm

**1**



**381** Greek Coins. 4th - 3rd century B.C. AE Reference:  
Condition: Very FineWeight: 7.5g Diameter:18.8mm

**1**



**382** Greek Coins. 4th - 3rd century B.C. AE Reference:  
Condition: Very FineWeight: 15.6g Diameter:26.8mm

**1**



**383** Greek Coins. 4th - 3rd century B.C. AE Reference:  
Condition: Very FineWeight: 11.1g Diameter:23mm

**1**



**384** Greek Coins. 4th - 3rd century B.C. AE Reference:  
Condition: Very FineWeight: 26.2g Diameter:30.7mm

**1**



**385** Greek Coins. 4th - 3rd century B.C. AE Reference:  
Condition: Very FineWeight: 10.1g Diameter:24mm

**1**



**386** Greek Coins. 4th - 3rd century B.C. AE Reference:  
Condition: Very FineWeight: 14.4g Diameter:27.7mm

**1**



**387** Greek Coins. 4th - 3rd century B.C. AE Reference:  
Condition: Very FineWeight: 2.2g Diameter:12.6mm

**1**



**388** Greek Coins. 4th - 3rd century B.C. AE Reference:  
Condition: Very FineWeight: 4.3g Diameter:19mm

**1**



**389** Greek Coins. 4th - 3rd century B.C. AE Reference:  
Condition: Very FineWeight: 9.4g Diameter:26.2mm

**1**



**390** Greek Coins. 4th - 3rd century B.C. AE Reference:  
Condition: Very FineWeight: 2.6g Diameter:19.2mm

**1**



**391** Greek Coins. 4th - 3rd century B.C. AE Reference:  
Condition: Very FineWeight: 1.9g Diameter:13mm

**1**



**392** Greek Coins. 4th - 3rd century B.C. AE Reference:  
Condition: Very FineWeight: 1.4g Diameter:10.7mm

**1**





**393** Greek Coins. 4th - 3rd century B.C. AE Reference:  
Condition: Very FineWeight: 0.5g Diameter:9.1mm

**1**



**394** Greek Coins. 4th - 3rd century B.C. AE Reference:  
Condition: Very FineWeight: 2.7g Diameter:17.1mm

**1**



**395** Greek Coins. 4th - 3rd century B.C. AE Reference:  
Condition: Very FineWeight: 1.8g Diameter:16.2mm

**1**



**396** Greek Coins. 4th - 3rd century B.C. AE Reference:  
Condition: Very FineWeight: 2.1g Diameter:16mm

**1**



**397** Greek Coins. 4th - 3rd century B.C. AE Reference:  
Condition: Very FineWeight: 2.1g Diameter:16.2mm

**1**



**398** Greek Coins. 4th - 3rd century B.C. AE Reference:  
Condition: Very FineWeight: 2.5g Diameter:17.5mm

**1**



**399** Roman Provincial Coins, Ae Reference: Condition: Very  
FineWeight: 19.5g Diameter:32.4mm

**1**





**400** Roman Provincial Coins, Ae Reference: Condition: Very  
FineWeight: 21.5g Diameter:34mm

**1**



**401** Roman Provincial Coins, Ae Reference: Condition: Very  
FineWeight: 18g Diameter:31.5mm

**1**



**402** Roman Provincial Coins, Ae Reference: Condition: Very  
FineWeight: 12.6g Diameter:27.2mm

**1**



**403** Roman Provincial Coins, Ae Reference: Condition: Very  
FineWeight: 14.6g Diameter:33.1mm

**1**



**404** Roman Provincial Coins, Ae Reference: Condition: Very  
FineWeight: 10.4g Diameter:23.8mm

**1**



**405** Roman Provincial Coins, Ae Reference: Condition: Very  
FineWeight: 8.7g Diameter:26.2mm

**1**



**406** Roman Provincial Coins, Ae Reference: Condition: Very  
FineWeight: 9.1g Diameter:23.8mm

**1**



**407** Roman Provincial Coins, Ae Reference: Condition: Very  
FineWeight: 4.7g Diameter:19.8mm

**1**



**408** Roman Provincial Coins, Ae Reference: Condition: Very  
FineWeight: 3.5g Diameter:19mm

**1**



**409** Roman Provincial Coins, Ae Reference: Condition: Very  
FineWeight: 10.4g Diameter:25.2mm

**1**



**410** Roman Provincial Coins, Ae Reference: Condition: Very  
FineWeight: 8.3g Diameter:23mm

**1**



**411** Roman Provincial Coins, Ae Reference: Condition: Very  
FineWeight: 8.9g Diameter:24.4mm

**1**



**412** Roman Provincial Coins, Ae Reference: Condition: Very  
FineWeight: 26.8g Diameter:43.5mm

**1**



**413** Roman Provincial Coins, Ae Reference: Condition: Very  
FineWeight: 9.5g Diameter:27mm

**1**



**414** Roman Provincial Coins, Ae Reference: Condition: Very  
FineWeight: 5.4g Diameter:19.3mm

**1**



**415** Roman Provincial Coins, Ae. Reference: Condition: Very  
FineWeight: 14.4g Diameter:30mm

**1**



**416** Roman Provincial Coins, AR. Reference: Condition: Very  
FineWeight: 6.4g Diameter:20.5mm

**1**



**417** Roman Provincial Coins, AR. Reference: Condition: Very  
FineWeight: 5.9g Diameter:20.5mm

**1**



**418** Roman Provincial Coins, AR. Reference: Condition: Very  
FineWeight: 4.7g Diameter:22mm

**1**



**419** Roman Provincial Coins, AR. Reference: Condition: Very  
FineWeight: 6.6g Diameter:20.7mm

**1**



**420** Roman Provincial Coins, AR. Reference: Condition: Very  
FineWeight: 6.3g Diameter:21.3mm

**1**



**421** Roman Provincial Coins, AR. Reference: Condition: Very  
FineWeight: 6.5g Diameter:19.7mm

**1**



**422** Roman Provincial Coins, AR. Reference: Condition: Very  
FineWeight: 6g Diameter:21.4mm

**1**



**423** Roman Provincial Coins, AR. Reference: Condition: Very  
FineWeight: 3.7g Diameter:16.6mm

**1**



**424** Roman Provincial Coins, AR. Reference: Condition: Very  
FineWeight: 3.3g Diameter:18mm

**1**



**425** Roman Provincial Coins, AR. Reference: Condition: Very  
FineWeight: 2.4g Diameter:17.8mm

**1**



**426** Roman Provincial Coins, AR. Reference: Condition: Very  
FineWeight: 2.6g Diameter:16.4mm

**1**



**427** Roman Provincial Coins, AR. Reference: Condition: Very  
FineWeight: 1.9g Diameter:14.5mm

**1**



**428** Roman Provincial Coins, AR. Reference: Condition: Very  
FineWeight: 1.3g Diameter:14.4mm

**1**



**429** Roman Provincial Coins, AR. Reference: Condition: Very  
FineWeight: 1.7g Diameter:14.6mm

**1**



**430** Roman Provincial Coins, AR. Reference: Condition: Very  
FineWeight: 1.8g Diameter:14.7mm

**1**



**431** Roman Provincial Coins, AR. Reference: Condition: Very  
FineWeight: 1g Diameter:15.2mm

**1**



**432** Roman Provincial Coins, AR. Reference: Condition: Very  
FineWeight: 1.5g Diameter:14.6mm

**1**



**433** Roman Provincial Coins, AR. Reference: Condition: Very  
FineWeight: 1.8g Diameter:13.8mm

**1**



**434** Roman Provincial Coins, AR. Reference: Condition: Very  
FineWeight: 1.8g Diameter:14.8mm

**1**





**435** Roman Provincial Coins, AR. Reference: Condition: Very  
FineWeight: 1.7g Diameter:15.2mm

**1**



**436** Roman Provincial Coins, AR. Reference: Condition: Very  
FineWeight: 1.7g Diameter:13mm

**1**



**437** Roman Provincial Coins, AR. Reference: Condition: Very  
FineWeight: 0.9g Diameter:12.7mm

**1**



**438** Roman Provincial Coins, AR. Reference: Condition: Very  
FineWeight: 1.5g Diameter:15mm

**1**



**439** Roman Provincial Coins, AR. Reference: Condition: Very  
FineWeight: 1.4g Diameter:14mm

**1**



**440** Roman Provincial Coins, AR. Reference: Condition: Very  
FineWeight: 1.5g Diameter:14.2mm

**1**



**441** Roman Provincial Coins, Ae. Reference: Condition: Very  
FineWeight: 5.2g Diameter:17.4mm

**1**



**442** Roman Provincial Coins, Ae. Reference: Condition: Very  
FineWeight: 12g Diameter:25.8mm

**1**



**443** Roman Provincial Coins, Ae. Reference: Condition: Very  
FineWeight: 15.3g Diameter:28.1mm

**1**



**444** Roman Provincial Coins, Ae. Reference: Condition: Very  
FineWeight: 8g Diameter:21.2mm

**1**



**445** Roman Provincial Coins, Ae. Reference: Condition: Very  
FineWeight: 5g Diameter:20mm

**1**



**446** Roman Provincial Coins, Ae. Reference: Condition: Very  
FineWeight: 5.5g Diameter:19.4mm

**1**



**447** Roman Provincial Coins, Ae. Reference: Condition: Very  
FineWeight: 3.1g Diameter:18.1mm

**1**



**448** Roman Provincial Coins, Ae. Reference: Condition: Very  
FineWeight: 2.1g Diameter:14.8mm

**1**



**449** Roman Provincial Coins, Ae. Reference: Condition: Very  
FineWeight: 3.4g Diameter:17.8mm

**1**



**450** Roman Provincial Coins, Ae. Reference: Condition: Very  
FineWeight: 4.5g Diameter:19.7mm

**1**



**451** Roman Provincial Coins, Ae. Reference: Condition: Very  
FineWeight: 8.6g Diameter:21.3mm

**1**



**452** Roman Provincial Coins, Ae. Reference: Condition: Very  
FineWeight: 4.5g Diameter:18.1mm

**1**



**453** Roman Provincial Coins, Ae. Reference: Condition: Very  
FineWeight: 5.3g Diameter:20.8mm

**1**



**454** Roman Provincial Coins, Ae. Reference: Condition: Very  
FineWeight: 7.5g Diameter:20.6mm

**1**



**455** Roman Provincial Coins, Ae. Reference: Condition: Very  
FineWeight: 17.7g Diameter:28mm

**1**



**456** Roman Provincial Coins, Ae. Reference: Condition: Very  
FineWeight: 3.7g Diameter:19.2mm

**1**



**457** Roman Provincial Coins, Ae. Reference: Condition: Very  
FineWeight: 2.6g Diameter:15.9mm

**1**



**458** Roman Provincial Coins, Ae. Reference: Condition: Very  
FineWeight: 13g Diameter:31mm

**1**



**459** Roman Provincial Coins, Ae. Reference: Condition: Very  
FineWeight: 5.3g Diameter:17.5mm

**1**



**460** Roman Provincial Coins, Ae. Reference: Condition: Very  
FineWeight: 5.1g Diameter:19.8mm

**1**



**461** Roman Provincial Coins, Ae. Reference: Condition: Very  
FineWeight: 9.9g Diameter:23.5mm

**1**



**462** Roman Provincial Coins, Ae. Reference: Condition: Very  
FineWeight: 10.8g Diameter:27.7mm

**1**



**463** Roman Provincial Coins, Ae. Reference: Condition: Very  
FineWeight: 12.7g Diameter:27mm

**1**



**464** Roman Provincial Coins, Ae. Reference: Condition: Very  
FineWeight: 11.1g Diameter:25.3mm

**1**



**465** Roman Provincial Coins, Ae. Reference: Condition: Very  
FineWeight: 12.5g Diameter:26.2mm

**1**



**466** Roman Provincial Coins, Ae. Reference: Condition: Very  
FineWeight: 7g Diameter:22.3mm

**1**



**467** Roman Provincial Coins, Ae. Reference: Condition: Very  
FineWeight: 11.4g Diameter:26.3mm

**1**



**468** Roman Provincial Coins, Ae. Reference: Condition: Very  
FineWeight: 11.9g Diameter:27.5mm

**1**



**469** Roman Provincial Coins, Ae. Reference: Condition: Very  
FineWeight: 5.7g Diameter:22mm

**1**





**470** Roman Provincial Coins, Ae. Reference: Condition: Very Fine Weight: 8.7g Diameter: 21.6mm

**1**



**471** Roman Provincial Coins, Ae. Reference: Condition: Very Fine Weight: 11.7g Diameter: 26mm

**1**



**472** Roman Provincial Coins, Ae. Reference: Condition: Very FineWeight: 9.4g Diameter:26mm

**1**



**473** Roman Provincial Coins, Ae. Reference: Condition: Very Fine Weight: 9.1g Diameter: 21.6mm

**1**



**474** Roman Provincial Coins, Ae. Reference: Condition: Very Fine Weight: 11.8g Diameter: 26.1mm

**1**



**475** Roman Provincial Coins, Ae. Reference: Condition: Very Fine Weight: 12.4g Diameter: 26.3mm

**1**



**476** Roman Provincial Coins, Ae. Reference: Condition: Very Fine Weight: 11.8g Diameter: 26.5mm

**1**



**477** Roman Provincial Coins, Ae. Reference: Condition: Very  
FineWeight: 11.5g Diameter:25.5mm

**1**



**478** Roman Provincial Coins, Ae. Reference: Condition: Very  
FineWeight: 6.7g Diameter:19.3mm

**1**



**479** Roman Provincial Coins, Ae. Reference: Condition: Very  
FineWeight: 6.2g Diameter:19.4mm

**1**



**480** Roman Provincial Coins, Ae. Reference: Condition: Very  
FineWeight: 6.6g Diameter:21.4mm

**1**



**481** Roman Provincial Coins, Ae. Reference: Condition: Very  
FineWeight: 13.9g Diameter:27.5mm

**1**



**482** Roman Provincial Coins, Ae. Reference: Condition: Very  
FineWeight: 11.2g Diameter:25.8mm

**1**



**483** Roman Provincial Coins, Ae. Reference: Condition: Very  
FineWeight: 14.1g Diameter:27.6mm

**1**



**484** Roman Provincial Coins, Ae. Reference: Condition: Very  
FineWeight: 12.1g Diameter:26.5mm

**1**



**485** Roman Provincial Coins, Ae. Reference: Condition: Very  
FineWeight: 17.9g Diameter:28.4mm

**1**



**486** Roman Provincial Coins, Ae. Reference: Condition: Very  
FineWeight: 6.4g Diameter:21.6mm

**1**



**487** Roman Provincial Coins, Ae. Reference: Condition: Very  
FineWeight: 9.5g Diameter:22.1mm

**1**



**488** Roman Provincial Coins, Ae. Reference: Condition: Very  
FineWeight: 6.8g Diameter:20.1mm

**1**



**489** Roman Provincial Coins, Ae. Reference: Condition: Very  
FineWeight: 8.1g Diameter:23.8mm

**1**



**490** Roman Provincial Coins, Ae. Reference: Condition: Very  
FineWeight: 6.4g Diameter:21mm

**1**



**491** Roman Provincial Coins, Ae. Reference: Condition: Very  
FineWeight: 7.5g Diameter:20.1mm

**1**



**492** Roman Provincial Coins, Ae. Reference: Condition: Very  
FineWeight: 5.1g Diameter:17mm

**1**



**493** Roman Provincial Coins, Ae. Reference: Condition: Very  
FineWeight: 7.8g Diameter:22mm

**1**



**494** Roman Provincial Coins, Ae. Reference: Condition: Very  
FineWeight: 8.5g Diameter:20.3mm

**1**



**495** Roman Provincial Coins, Ae. Reference: Condition: Very  
FineWeight: 11.7g Diameter:26mm

**1**



**496** Roman Provincial Coins, Ae. Reference: Condition: Very  
FineWeight: 9.4g Diameter:27.6mm

**1**



**497** Roman Provincial Coins, Ae. Reference: Condition: Very  
FineWeight: 8.9g Diameter:34.4mm

**1**



**498** Roman Provincial Coins, Ae. Reference: Condition: Very  
FineWeight: 2.8g Diameter:14mm

**1**



**499** Roman Provincial Coins, Ae. Reference: Condition: Very  
FineWeight: 4.7g Diameter:17.5mm

**1**



**500** Roman Provincial Coins, Ae. Reference: Condition: Very  
FineWeight: 3.1g Diameter:15.6mm

**1**



**501** Roman Provincial Coins, Ae. Reference: Condition: Very  
FineWeight: 2.2g Diameter:13.5mm

**1**



**502** Roman Provincial Coins, Ae. Reference: Condition: Very  
FineWeight: 5.3g Diameter:17.6mm

**1**



**503** Roman Provincial Coins, Ae. Reference: Condition: Very  
FineWeight: 4.4g Diameter:17.1mm

**1**



**504** Roman Provincial Coins, Ae. Reference: Condition: Very  
FineWeight: 14.5g Diameter:27.6mm

**1**





**505** Roman Provincial Coins, Ae. Reference: Condition: Very  
FineWeight: 7.5g Diameter:21.6mm

**1**



**506** Roman Provincial Coins, Ae. Reference: Condition: Very  
FineWeight: 15.8g Diameter:30.4mm

**1**



**507** Roman Provincial Coins, Ae. Reference: Condition: Very  
FineWeight: 7.5g Diameter:19.7mm

**1**



**508** Roman Provincial Coins, Ae. Reference: Condition: Very  
FineWeight: 4.3g Diameter:19.7mm

**1**



**509** Roman Provincial Coins, Ae. Reference: Condition: Very  
FineWeight: 4.8g Diameter:24.4mm

**1**



**510** Roman Provincial Coins, Ae. Reference: Condition: Very  
FineWeight: 13.8g Diameter:29.1mm

**1**



**511** Roman Provincial Coins, Ae. Reference: Condition: Very  
FineWeight: 2.7g Diameter:13.1mm

**1**



**512** Roman Provincial Coins, Ae. Reference: Condition: Very  
FineWeight: 2.9g Diameter:16.8mm

**1**



**513** Roman Provincial Coins, Ae. Reference: Condition: Very  
FineWeight: 19g Diameter:31.2mm

**1**



**514** Roman Provincial Coins, Ae. Reference: Condition: Very  
FineWeight: 18.3g Diameter:29.1mm

**1**



**515** Roman Provincial Coins, Ae. Reference: Condition: Very  
FineWeight: 9.7g Diameter:21.5mm

**1**



**516** Roman Provincial Coins, Ae. Reference: Condition: Very  
FineWeight: 4.8g Diameter:20.6mm

**1**



**517** Roman Provincial Coins, Ae. Reference: Condition: Very  
FineWeight: 3.6g Diameter:18.5mm

**1**



**518** Roman Provincial Coins, Ae. Reference: Condition: Very  
FineWeight: 4.6g Diameter:18.8mm

**1**



**519** Roman Provincial Coins, Ae. Reference: Condition: Very  
FineWeight: 15.8g Diameter:27.3mm

**1**



**520** Roman Provincial Coins, Ae. Reference: Condition: Very  
FineWeight: 4.9g Diameter:18.4mm

**1**



**521** Roman Provincial Coins, Ae. Reference: Condition: Very  
FineWeight: 8.2g Diameter:24.3mm

**1**



**522** Roman Provincial Coins, Ae. Reference: Condition: Very  
FineWeight: 4.2g Diameter:19.4mm

**1**



**523** Roman Provincial Coins, Ae. Reference: Condition: Very  
FineWeight: 2.6g Diameter:14.8mm

**1**



**524** Roman Provincial Coins, Ae. Reference: Condition: Very  
FineWeight: 7g Diameter:24.8mm

**1**



**525** Roman Provincial Coins, Ae. Reference: Condition: Very  
FineWeight: 9.6g Diameter:23.1mm

**1**



**526** Roman Provincial Coins, Ae. Reference: Condition: Very  
FineWeight: 5.6g Diameter:19.5mm

**1**



**527** Roman Provincial Coins, Ae. Reference: Condition: Very  
FineWeight: 11.3g Diameter:23.9mm

**1**



**528** Roman Provincial Coins, Ae. Reference: Condition: Very  
FineWeight: 8.3g Diameter:22mm

**1**



**529** Roman Provincial Coins, Ae. Reference: Condition: Very  
FineWeight: 8g Diameter:22.3mm

**1**



**530** Roman Provincial Coins, Ae. Reference: Condition: Very  
FineWeight: 15.9g Diameter:27.5mm

**1**



**531** Roman Provincial Coins, Ae. Reference: Condition: Very  
FineWeight: 10.8g Diameter:25.4mm

**1**



**532** Roman Provincial Coins, Ae. Reference: Condition: Very  
FineWeight: 9.6g Diameter:28.6mm

**1**





**533** Roman Provincial Coins, Ae. Reference: Condition: Very  
FineWeight: 3.4g Diameter:16.9mm

**1**



**534** Roman Provincial Coins, Ae. Reference: Condition: Very  
FineWeight: 4.1g Diameter:18.8mm

**1**



**535** Roman Provincial Coins, Ae. Reference: Condition: Very  
FineWeight: 7.1g Diameter:20.6mm

**1**



**536** Roman Provincial Coins, Ae. Reference: Condition: Very  
FineWeight: 7.1g Diameter:22.5mm

**1**



**537** Roman Provincial Coins, Ae. Reference: Condition: Very  
FineWeight: 3.9g Diameter:16.7mm

**1**



**538** Roman Provincial Coins, Ae. Reference: Condition: Very  
FineWeight: 2.9g Diameter:16.3mm

**1**



**539** Roman Provincial Coins, Ae. Reference: Condition: Very  
FineWeight: 4.6g Diameter:16.4mm

**1**





**540** Roman Provincial Coins, Ae. Reference: Condition: Very  
FineWeight: 3.8g Diameter:17mm

**1**



**541** Roman Provincial Coins, Ae. Reference: Condition: Very  
FineWeight: 3.4g Diameter:15mm

**1**



**542** Roman Provincial Coins, Ae. Reference: Condition: Very  
FineWeight: 4.4g Diameter:17.4mm

**1**



**543** Roman Provincial Coins, Ae. Reference: Condition: Very  
FineWeight: 2.5g Diameter:14.2

**1**



**544** Roman Provincial Coins, Ae. Reference: Condition: Very  
FineWeight: 5.2g Diameter:18.7mm

**1**



**545** Roman Provincial Coins, Ae. Reference: Condition: Very  
FineWeight: 18.0g Diameter:28.8mm

**1**



**546** Roman Provincial Coins, Ae. Reference: Condition: Very  
FineWeight: 9.7g Diameter:21.8mm

**1**



**547** Roman Provincial Coins, Ae. Reference: Condition: Very  
FineWeight: 3.5g Diameter:19.8mm

**1**



**548** Roman Provincial Coins, Ae. Reference: Condition: Very  
FineWeight: 2.2g Diameter:12.9mm

**1**



**549** Roman Provincial Coins, Ae. Reference: Condition: Very  
FineWeight: 4.5g Diameter:17.6mm

**1**



**550** Roman Provincial Coins, Ae. Reference: Condition: Very  
FineWeight: 14.2g Diameter:24.9mm

**1**



**551** Roman Provincial Coins, Ae. Reference: Condition: Very  
FineWeight: 5.2g Diameter:21.5mm

**1**



**552** Roman Provincial Coins, Ae. Reference: Condition: Very  
FineWeight: 5,9g Diameter:20.1mm

**1**



**553** Roman Provincial Coins, Ae. Reference: Condition: Very  
FineWeight: 10.1g Diameter:21.2mm

**1**



**554** Roman Provincial Coins, Ae. Reference: Condition: Very  
FineWeight: 14.5g Diameter:27.6mm

**1**



**555** Roman Provincial Coins, Ae. Reference: Condition: Very  
FineWeight: 5.2g Diameter:19.7mm

**1**



**556** Roman Provincial Coins, Ae. Reference: Condition: Very  
FineWeight: 3.6g Diameter:16.1mm

**1**



**557** Roman Provincial Coins, Ae. Reference: Condition: Very  
FineWeight: 2.6g Diameter:15.9mm

**1**



**558** Roman Provincial Coins, Ae. Reference: Condition: Very  
FineWeight: 2.0g Diameter:17.mm

**1**



**559** Roman Provincial Coins, Ae. Reference: Condition: Very  
FineWeight: 2.3g Diameter:13.1mm

**1**



**560** Roman Provincial Coins, Ae. Reference: Condition: Very  
FineWeight: 4.4g Diameter:17.6mm

**1**



**561** Roman Provincial Coins, Ae. Reference: Condition: Very  
FineWeight: 3.6g Diameter:15.0mm

**1**



**562** Roman Provincial Coins, Ae. Reference: Condition: Very  
FineWeight: 2.4g Diameter:16.1mm

**1**



**563** Roman Provincial Coins, Ae. Reference: Condition: Very  
FineWeight: 3.6g Diameter:18.7mm

**1**



**564** Roman Provincial Coins, Ae. Reference: Condition: Very  
FineWeight: 3.9g Diameter:16.mm

**1**



**565** Roman Provincial Coins, Ae. Reference: Condition: Very  
FineWeight: 3.7g Diameter:16.7mm

**1**



**566** Roman Provincial Coins, Ae. Reference: Condition: Very  
FineWeight: 3.0g Diameter:15.6mm

**1**



**567** Roman Provincial Coins, Ae. Reference: Condition: Very  
FineWeight: 4.2g Diameter:17.4mm

**1**



**568** Roman Provincial Coins, Ae. Reference: Condition: Very  
FineWeight: 11.1g Diameter:23.5mm

**1**



**569** Roman Provincial Coins, Ae. Reference: Condition: Very  
FineWeight: 3.4g Diameter:16.1mm

**1**



**570** Roman Provincial Coins, Ae. Reference: Condition: Very  
FineWeight: 5.9g Diameter:20.5mm

**1**



**571** Roman Provincial Coins, Ae. Reference: Condition: Very  
FineWeight: 5.9g Diameter:18.5mm

**1**



**572** Roman Provincial Coins, Ae. Reference: Condition: Very  
FineWeight: 9g Diameter:22mm

**1**



**573** Roman Provincial Coins, Ae. Reference: Condition: Very  
FineWeight: 6.6g Diameter:19mm

**1**



**574** Roman Provincial Coins, Ae. Reference: Condition: Very  
FineWeight: 13.3g Diameter:27.5mm

**1**





**575** Roman Provincial Coins, Ae. Reference: Condition: Very  
FineWeight: 4.8g Diameter:18.6mm

**1**



**576** Roman Provincial Coins, Ae. Reference: Condition: Very  
FineWeight: 4.7g Diameter:18.7mm

**1**



**577** Roman Provincial Coins, Ae. Reference: Condition: Very  
FineWeight: 4.5g Diameter:18.5mm

**1**



**578** Roman Provincial Coins, Ae. Reference: Condition: Very  
FineWeight: 6.3g Diameter:21.5mm

**1**



**579** Roman Provincial Coins, Ae. Reference: Condition: Very  
FineWeight: 4g Diameter:15mm

**1**



**580** Roman Provincial Coins, Ae. Reference: Condition: Very  
FineWeight: 4.3g Diameter:19.1mm

**1**



**581** Roman Provincial Coins, Ae. Reference: Condition: Very  
FineWeight: 11.5g Diameter:26.4mm

**1**



**582** Roman Provincial Coins, Ae. Reference: Condition: Very  
FineWeight: 13.1g Diameter:30mm

**1**



**583** Roman Provincial Coins, Ae. Reference: Condition: Very  
FineWeight: 9.8g Diameter:23.2mm

**1**



**584** Roman Provincial Coins, Ae. Reference: Condition: Very  
FineWeight: 10.4g Diameter:23.7mm

**1**



**585** Roman Provincial Coins, Ae. Reference: Condition: Very  
FineWeight: 9.3g Diameter:23.6mm

**1**



**586** Roman Provincial Coins, Ae. Reference: Condition: Very  
FineWeight: 10.1g Diameter:22mm

**1**



**587** Roman Provincial Coins, Ae. Reference: Condition: Very  
FineWeight: 9g Diameter:22.8mm

**1**



**588** Roman Provincial Coins, Ae. Reference: Condition: Very  
FineWeight: 5.6g Diameter:21.7mm

**1**



**589** Roman Provincial Coins, Ae. Reference: Condition: Very  
FineWeight: 9.9g Diameter:27mm

**1**



**590** Roman Provincial Coins, Ae. Reference: Condition: Very  
FineWeight: 8.4g Diameter:23mm

**1**



**591** Roman Provincial Coins, Ae. Reference: Condition: Very  
FineWeight: 1.5g Diameter:13.6mm

**1**



**592** Roman Provincial Coins, Ae. Reference: Condition: Very  
FineWeight: 19.4g Diameter:31.3mm

**1**



**593** Roman Provincial Coins, Ae. Reference: Condition: Very  
FineWeight: 7.9g Diameter:20.3mm

**1**



**594** Roman Provincial Coins, Ae. Reference: Condition: Very  
FineWeight: 5.6g Diameter:21mm

**1**



**595** Roman Provincial Coins, Ae. Reference: Condition: Very  
FineWeight: 8.2g Diameter:20.7mm

**1**



**596** Roman Provincial Coins, Ae. Reference: Condition: Very  
FineWeight: 6.3g Diameter:19.2mm

**1**



**597** Roman Provincial Coins, Ae. Reference: Condition: Very  
FineWeight: 6.7g Diameter:18.4mm

**1**



**598** Roman Provincial Coins, Ae. Reference: Condition: Very  
FineWeight: 8.3g Diameter:22.6mm

**1**



**599** Roman Provincial Coins, Ae. Reference: Condition: Very  
FineWeight: 6.3g Diameter:22.4mm

**1**



**600** Roman Provincial Coins, Ae. Reference: Condition: Very  
FineWeight: 4.1g Diameter:18.2mm

**1**



**601** Roman Provincial Coins, Ae. Reference: Condition: Very  
FineWeight: 3.4g Diameter:16.7mm

**1**



**602** Roman Provincial Coins, Ae. Reference: Condition: Very  
FineWeight: 10g Diameter:26.5mm

**1**



**603** Roman Provincial Coins, Ae. Reference: Condition: Very  
FineWeight: 17.6g Diameter:34.7mm

**1**



**604** Roman Provincial Coins, Ae. Reference: Condition: Very  
FineWeight: 14g Diameter:27.2mm

**1**



**605** Roman Provincial Coins, Ae. Reference: Condition: Very  
FineWeight: 12.6g Diameter:27.8mm

**1**



**606** Roman Provincial Coins, Ae. Reference: Condition: Very  
FineWeight: 6.3g Diameter:19.7mm

**1**



**607** Roman Provincial Coins, Ae. Reference: Condition: Very  
FineWeight: 5.5g Diameter:21.7mm

**1**



**608** Roman Provincial Coins, Ae. Reference: Condition: Very  
FineWeight: 3.6g Diameter:17.2mm

**1**



**609** Roman Provincial Coins, Ae. Reference: Condition: Very  
FineWeight: 5.1g Diameter:17.1mm

**1**





**610** Roman Provincial Coins, Ae. Reference: Condition: Very  
FineWeight: 2.5g Diameter:15.6mm

**1**



**611** Roman Provincial Coins, Ae. Reference: Condition: Very  
FineWeight: 8.6g Diameter:25.1mm

**1**



**612** Roman Provincial Coins, Ae. Reference: Condition: Very  
FineWeight: 3.5g Diameter:18mm

**1**



**613** Roman Provincial Coins, Ae. Reference: Condition: Very  
FineWeight: 16.8g Diameter:27.1mm

**1**



**614** Roman Provincial Coins, Ae. Reference: Condition: Very  
FineWeight: 7.7g Diameter:23mm

**1**



**615** Roman Provincial Coins, Ae. Reference: Condition: Very  
FineWeight: 12.7g Diameter:26.2mm

**1**



**616** Roman Provincial Coins, Ae. Reference: Condition: Very  
FineWeight: 8.3g Diameter:22mm

**1**



**617** Roman Provincial Coins, Ae. Reference: Condition: Very  
FineWeight: 18.2g Diameter:32.6mm

**1**



**618** Roman Provincial Coins, Ae. Reference: Condition: Very  
FineWeight: 8.6g Diameter:23.8mm

**1**



**619** Roman Provincial Coins, Ae. Reference: Condition: Very  
FineWeight: 15.4g Diameter:26.3mm

**1**



**620** Roman Provincial Coins, Ae. Reference: Condition: Very  
FineWeight: 15.1g Diameter:23.3mm

**1**



**621** Roman Provincial Coins, Ae. Reference: Condition: Very  
FineWeight: 15.8g Diameter:26.7mm

**1**



**622** Roman Provincial Coins, Ae. Reference: Condition: Very  
FineWeight: 5.1g Diameter:19.5mm

**1**



**623** Roman Provincial Coins, Ae. Reference: Condition: Very  
FineWeight: 13.1g Diameter:23.2mm

**1**



**624** Roman Provincial Coins, Ae. Reference: Condition: Very  
FineWeight: 24g Diameter:31.8mm

**1**



**625** Roman Provincial Coins, Ae. Reference: Condition: Very  
FineWeight: 5g Diameter:22.1mm

**1**



**626** Roman Provincial Coins, Ae. Reference: Condition: Very  
FineWeight: 5.1g Diameter:22.7mm

**1**



**627** Roman Provincial Coins, Ae. Reference: Condition: Very  
FineWeight: 1.4g Diameter:13.2mm

**1**



**628** Roman Provincial Coins, Ae. Reference: Condition: Very  
FineWeight: 3.8g Diameter:21mm

**1**



**629** Roman Provincial Coins, Ae. Reference: Condition: Very  
FineWeight: 9.7g Diameter:25.5mm

**1**



**630** Roman Provincial Coins, Ae. Reference: Condition: Very  
FineWeight: 10.7g Diameter:26.3mm

**1**



**631** Roman Provincial Coins, Ae. Reference: Condition: Very  
FineWeight: 5.6g Diameter:22mm

**1**



**632** Roman Provincial Coins, Ae. Reference: Condition: Very  
FineWeight: 4.8g Diameter:20.5mm

**1**



**633** Roman Provincial Coins, Ae. Reference: Condition: Very  
FineWeight: 5.8g Diameter:23mm

**1**



**634** Roman Provincial Coins, Ae. Reference: Condition: Very  
FineWeight: 4.8g Diameter:20.6mm

**1**



**635** Roman Provincial Coins, Ae. Reference: Condition: Very  
FineWeight: 6.2g Diameter:21.6mm

**1**



**636** Roman Provincial Coins, Ae. Reference: Condition: Very  
FineWeight: 5.6g Diameter:21mm

**1**



**637** Roman Provincial Coins, Ae. Reference: Condition: Very  
FineWeight: 5.1g Diameter:22mm

**1**





**638** Roman Provincial Coins, Ae. Reference: Condition: Very  
FineWeight: 7.1g Diameter:24.5mm

**1**



**639** Roman Provincial Coins, Ae. Reference: Condition: Very  
FineWeight: 11g Diameter:26mm

**1**



**640** Roman Provincial Coins, Ae. Reference: Condition: Very  
FineWeight: 4.6g Diameter:22.4mm

**1**



**641** Roman Provincial Coins, Ae. Reference: Condition: Very  
FineWeight: 5.3g Diameter:22.4mm

**1**



**642** Roman Provincial Coins, Ae. Reference: Condition: Very  
FineWeight: 6.1g Diameter:23.3mm

**1**



**643** Roman Provincial Coins, Ae. Reference: Condition: Very  
FineWeight: 6.2g Diameter:22.8mm

**1**



**644** Roman Provincial Coins, Ae. Reference: Condition: Very  
FineWeight: 4.1g Diameter:17.5mm

**1**





**645** Roman Provincial Coins, Ae. Reference: Condition: Very  
FineWeight: 8.8g Diameter:23.2mm

**1**



**646** Roman Provincial Coins, Ae. Reference: Condition: Very  
FineWeight: 2.6g Diameter:17.2mm

**1**



**647** Roman Provincial Coins, Ae. Reference: Condition: Very  
FineWeight: 2.8g Diameter:18mm

**1**



**648** Roman Provincial Coins, Ae. Reference: Condition: Very  
FineWeight: 8.9g Diameter:24.5mm

**1**



**649** Roman Provincial Coins, Ae. Reference: Condition: Very  
FineWeight: 7.3g Diameter:23.1mm

**1**



**650** Roman Provincial Coins, Ae. Reference: Condition: Very  
FineWeight: 3.1g Diameter:18.1mm

**1**



**651** Roman Provincial Coins, Ae. Reference: Condition: Very  
FineWeight: 4.3g Diameter:18.1mm

**1**



**652** Roman Provincial Coins, Ae. Reference: Condition: Very  
FineWeight: 3.9g Diameter:16.7mm

**1**



**653** Roman Provincial Coins, Ae. Reference: Condition: Very  
FineWeight: 20.2g Diameter:32.8mm

**1**



**654** Roman Provincial Coins, Ae. Reference: Condition: Very  
FineWeight: 20.5g Diameter:32mm

**1**



**655** Roman Provincial Coins, Ae. Reference: Condition: Very  
FineWeight: 16.6g Diameter:29mm

**1**



**656** Roman Provincial Coins, Ae. Reference: Condition: Very  
FineWeight: 17.2g Diameter:29.6mm

**1**



**657** Roman Provincial Coins, Ae. Reference: Condition: Very  
FineWeight: 15.5g Diameter:33mm

**1**



**658** Roman Provincial Coins, Ae. Reference: Condition: Very  
FineWeight: 11.9g Diameter:26.5mm

**1**



**659** Roman Provincial Coins, Ae. Reference: Condition: Very  
FineWeight: 14.2g Diameter:30.2mm

**1**



**660** Roman Provincial Coins, Ae. Reference: Condition: Very  
FineWeight: 7.4g Diameter:23.8mm

**1**



**661** Roman Provincial Coins, Ae. Reference: Condition: Very  
FineWeight: 27.4g Diameter:37.2mm

**1**



**662** Roman Provincial Coins, Ae. Reference: Condition: Very  
FineWeight: 6.7g Diameter:25mm

**1**



**663** Roman Provincial Coins, Ae. Reference: Condition: Very  
FineWeight: 9.2g Diameter:29.7mm

**1**



**664** Roman Provincial Coins, Ae. Reference: Condition: Very  
FineWeight: 11.2g Diameter:22.7mm

**1**



**665** Roman Provincial Coins, Ae. Reference: Condition: Very  
FineWeight: 11.6g Diameter:28.1mm

**1**



**666** Roman Provincial Coins, Ae. Reference: Condition: Very  
FineWeight: 5.7g Diameter:19.3mm

**1**



**667** Roman Provincial Coins, Ae. Reference: Condition: Very  
FineWeight: 9.8g Diameter:25.3mm

**1**



**668** Roman Provincial Coins, Ae. Reference: Condition: Very  
FineWeight: 6.3g Diameter:23.6mm

**1**



**669** Roman Provincial Coins, Ae. Reference: Condition: Very  
FineWeight: 8.8g Diameter:24.1mm

**1**



**670** Roman Provincial Coins, Ae. Reference: Condition: Very  
FineWeight: 8.4g Diameter:24.5mm

**1**



**671** Roman Provincial Coins, Ae. Reference: Condition: Very  
FineWeight: 7.6g Diameter:25.8mm

**1**



**672** Roman Provincial Coins, Ae. Reference: Condition: Very  
FineWeight: 11.2g Diameter:27.1mm

**1**





**673** Roman Provincial Coins, Ae. Reference: Condition: Very  
FineWeight: 16.2g Diameter:28.3mm

**1**



**674** Roman Provincial Coins, Ae. Reference: Condition: Very  
FineWeight: 21.1g Diameter:32.1mm

**1**



**675** Roman Provincial Coins, Ae. Reference: Condition: Very  
FineWeight: 10.8g Diameter:22.8mm

**1**



**676** Roman Provincial Coins, Ae. Reference: Condition: Very  
FineWeight: 5.1g Diameter:20mm

**1**



**677** Roman Provincial Coins, Ae. Reference: Condition: Very  
FineWeight: 7.5g Diameter:23mm

**1**



**678** Roman Provincial Coins, Ae. Reference: Condition: Very  
FineWeight: 3.7g Diameter:18.1mm

**1**



**679** Roman Provincial Coins, Ae. Reference: Condition: Very  
FineWeight: 10.6g Diameter:24.2mm

**1**





**680** Roman Provincial Coins, Ae. Reference: Condition: Very  
FineWeight: 5.8g Diameter:20.4mm

**1**



**681** Roman Provincial Coins, Ae. Reference: Condition: Very  
FineWeight: 13.5g Diameter:25.8mm

**1**



**682** Roman Provincial Coins, Ae. Reference: Condition: Very  
FineWeight: 5g Diameter:18mm

**1**



**683** Roman Provincial Coins, Ae. Reference: Condition: Very  
FineWeight: 8.4g Diameter:24.8mm

**1**



**684** Roman Provincial Coins, Ae. Reference: Condition: Very  
FineWeight: 5.6g Diameter:21.7mm

**1**



**685** Roman Provincial Coins, Ae. Reference: Condition: Very  
FineWeight: 10.2g Diameter:22.3mm

**1**



**686** Roman Provincial Coins, Ae. Reference: Condition: Very  
FineWeight: 6.3g Diameter:22mm

**1**



**687** Roman Provincial Coins, Ae. Reference: Condition: Very  
FineWeight: 3.8g Diameter:20.3mm

**1**



**688** Roman Provincial Coins, Ae. Reference: Condition: Very  
FineWeight: 7g Diameter:21.3mm

**1**



**689** Roman Provincial Coins, Ae. Reference: Condition: Very  
FineWeight: 7.5g Diameter:21.6mm

**1**



**690** Roman Provincial Coins, Ae. Reference: Condition: Very  
FineWeight: 3.8g Diameter:17.1mm

**1**



**691** Roman Provincial Coins, Ae. Reference: Condition: Very  
FineWeight: 3g Diameter:15.5mm

**1**



**692** Roman Provincial Coins, Ae. Reference: Condition: Very  
FineWeight: 4.7g Diameter:18.6mm

**1**



**693** Roman Provincial Coins, Ae. Reference: Condition: Very  
FineWeight: 3.1g Diameter:16.3mm

**1**



**694** Roman Provincial Coins, Ae. Reference: Condition: Very  
FineWeight: 7.6g Diameter:22.3mm

**1**



**695** Roman Provincial Coins, Ae. Reference: Condition: Very  
FineWeight: 2.3g Diameter:15.6mm

**1**



**696** Roman Provincial Coins, Ae. Reference: Condition: Very  
FineWeight: 8.2g Diameter:24.1mm

**1**



**697** Roman Provincial Coins, AR. Reference: Condition: Very  
FineWeight: 12.1g Diameter:26mm

**1**



**698** Roman Provincial Coins, AR. Reference: Condition: Very  
FineWeight: 11.5g Diameter:25.8mm

**1**



**699** Roman Provincial Coins, AR. Reference: Condition: Very  
FineWeight: 11.2g Diameter:27.4mm

**1**



**700** Roman Provincial Coins, AR. Reference: Condition: Very  
FineWeight: 10.9g Diameter:26.4mm

**1**



**701** Roman Provincial Coins, AR. Reference: Condition: Very  
FineWeight: 10.2g Diameter:25.5mm

**1**



**702** Roman Provincial Coins, AR. Reference: Condition: Very  
FineWeight: 12.6g Diameter:26mm

**1**



**703** Roman Provincial Coins, AR. Reference: Condition: Very  
FineWeight: 12.5g Diameter:27.7mm

**1**



**704** Roman Provincial Coins, AR. Reference: Condition: Very  
FineWeight: 12.1g Diameter:26.6mm

**1**



**705** Roman Provincial Coins, AR. Reference: Condition: Very  
FineWeight: 12.3g Diameter:26.7mm

**1**



**706** Roman Provincial Coins, AR. Reference: Condition: Very  
FineWeight: 13.1g Diameter:26.5mm

**1**



**707** Roman Provincial Coins, AR. Reference: Condition: Very  
FineWeight: 12g Diameter:27.4mm

**1**



**708** Roman Provincial Coins, AR. Reference: Condition: Very  
FineWeight: 12.6g Diameter:24.4mm

**1**



**709** Roman Provincial Coins, AR. Reference: Condition: Very  
FineWeight: 10.5g Diameter:24.6mm

**1**



**710** Roman Provincial Coins, AR. Reference: Condition: Very  
FineWeight: 11.5g Diameter:26.7mm

**1**



**711** Roman Provincial Coins, AR. Reference: Condition: Very  
FineWeight: 14.7g Diameter:25.6mm

**1**



**712** Roman Provincial Coins, Ae. Reference: Condition: Very  
FineWeight: 9.2g Diameter:24.3mm

**1**



**713** Roman Provincial Coins, Ae. Reference: Condition: Very  
FineWeight: 5.6g Diameter:21.3mm

**1**



**714** Marc Antony, as Triumvir and Imperator (43-30 BC). AR  
denarius Reference: Condition: Very FineWeight: 3.2g  
Diameter:16.4mm

**1**





**715** Augustus (27 BC-14 AD). Lugdunum (Lyon) mint AR Denarius Condition: Very FineWeight: 3.3g Diameter:17.3mm

**1**



**716** Pupienus Ae. Sestertius. Rome, AD 238. Reference: Condition: Very FineWeight: 17.6g Diameter:29.1mm

**1**



**717** Antoninus Pius AD 138-161. Rome. Sestertius Ae. Condition: Very FineWeight: 28.7g Diameter:33.4mm

**1**



**718** NERO (54-68), AE contorniate, Reference: Condition: Very FineWeight: 18.6g Diameter:34.2mm

**1**



**719** Severus Alexander. A.D. 222-235. AE sestertius Reference: Condition: Very FineWeight: 19.3g Diameter:29.1mm

**1**



**720** Roman Imperial Coins, 1st - 4th Century AD. Reference: Condition: Very FineWeight: 8.7g Diameter:26.1mm

**1**



**721** Roman Imperial Coins, 1st - 4th Century AD. Reference: Condition: Very FineWeight: 10.9g Diameter:26mm

**1**



**722** Antoninus Pius. A.D. 138-161. AE sestertertius Reference:  
Condition: Very FineWeight: 20.7g Diameter:29.7mm

**1**



**723** Trajan. A.D. 98-117. AE Reference: Condition: Very  
FineWeight: 7.5g Diameter:22.6mm

**1**



**724** Diva Faustina I. Died A.D. 140/1. AE sestertertius Reference:  
Condition: Very FineWeight: 25g Diameter:31.2mm

**1**



**725** Gordian III. A.D. 238-244. Ae. Reference: Condition: Very  
FineWeight: 10.1g Diameter:22.3mm

**1**



**726** Antoninus Pius. A.D. 138-161. AE Reference: Condition:  
Very FineWeight: 8.5g Diameter:24.6mm

**1**



**727** Nero. A.D. 54-68. AR denarius Reference: Condition: Very  
FineWeight: 3.2g Diameter:17.2mm

**1**



**728** Septimius Severus. A.D. 193-211. AR denarius Reference:  
Condition: Very FineWeight: 3.5g Diameter:17mm

**1**



**729** Septimius Severus. A.D. 193-211. AR denarius Reference:  
Condition: Very FineWeight: 3.3g Diameter:17.1mm

**1**



**730** Septimius Severus. A.D. 193-211. AR denarius Reference:  
Condition: Very FineWeight: 3.5g Diameter:16.2mm

**1**



**731** Septimius Severus. A.D. 193-211. AR denarius Reference:  
Condition: Very FineWeight: 2.4g Diameter:16.8mm

**1**



**732** Septimius Severus. A.D. 193-211. AR denarius Reference:  
Condition: Very FineWeight: 3.5g Diameter:17.6mm

**1**



**733** Septimius Severus. A.D. 193-211. AR denarius Reference:  
Condition: Very FineWeight: 3.5g Diameter:17mm

**1**



**734** Septimius Severus. A.D. 193-211. AR denarius Reference:  
Condition: Very FineWeight: 3.3g Diameter:16.5mm

**1**



**735** Septimius Severus. A.D. 193-211. AR denarius Reference:  
Condition: Very FineWeight: 3.1g Diameter:16.8mm

**1**



**736** Septimius Severus. A.D. 193-211. AR denarius Reference: Condition: Very FineWeight: 2.7g Diameter:17.4mm

**1**



**737** Vespasian. A.D. 69-79. AR denarius Reference: Condition: Very FineWeight: 3.2g Diameter:18.8mm

**1**



**738** Vespasian. A.D. 69-79. AR denarius Reference: Condition: Very FineWeight: 2.8g Diameter:16.7mm

**1**



**739** Vespasian. A.D. 69-79. AR denarius Reference: Condition: Very FineWeight: 2.8g Diameter:17.7mm

**1**



**740** Vespasian. A.D. 69-79. AR denarius Reference: Condition: Very FineWeight: 2.3g Diameter:19mm

**1**



**741** Vespasian. A.D. 69-79. AR denarius Reference: Condition: Very FineWeight: 2.7g Diameter:18.6mm

**1**



**742** Domitian. A.D. 81-96. AR denarius Reference: Condition: Very FineWeight: 3.5g Diameter:18.1mm

**1**



**743** Domitian. A.D. 81-96. AR denarius Reference: Condition: Very FineWeight: 2.7g Diameter:18.2mm

**1**



**744** Domitian. A.D. 81-96. AR denarius Reference: Condition: Very FineWeight: 3.1g Diameter:18.2mm

**1**



**745** Domitian. A.D. 81-96. AR denarius Reference: Condition: Very FineWeight: 2.8g Diameter:17.7mm

**1**



**746** Domitian. A.D. 81-96. AR denarius Reference: Condition: Very FineWeight: 2g Diameter:17.3mm

**1**



**747** Antoninus Pius. A.D. 138-161. AR denarius Reference: Condition: Very FineWeight: 2.8g Diameter:18.1mm

**1**



**748** Marcus Aurelius. As Caesar, A.D. 138-161. AR denarius Reference: Condition: Very FineWeight: 2.7g Diameter:16.6mm

**1**



**749** Commodus. A.D. 177-192. AR denarius Reference: Condition: Very FineWeight: 2.5g Diameter:16.8mm

**1**





**750** Hadrian. A.D. 117-138. AR denarius Reference: Condition:  
Very FineWeight: 3g Diameter:16.6mm

**1**



**751** Hadrian. A.D. 117-138. AR denarius Reference: Condition:  
Very FineWeight: 2.5g Diameter:17.1mm

**1**



**752** Hadrian. A.D. 117-138. AR denarius Reference: Condition:  
Very FineWeight: 2.3g Diameter:18.8mm

**1**



**753** Hadrian. A.D. 117-138. AR denarius Reference: Condition:  
Very FineWeight: 2.7g Diameter:18.4mm

**1**



**754** Hadrian. A.D. 117-138. AR denarius Reference: Condition:  
Very FineWeight: 2.8g Diameter:19mm

**1**



**755** Hadrian. A.D. 117-138. AR denarius Reference: Condition:  
Very FineWeight: 2.3g Diameter:17.6mm

**1**



**756** Hadrian. A.D. 117-138. AR denarius Reference: Condition:  
Very FineWeight: 2.8g Diameter:18.4mm

**1**



**757** Hadrian. A.D. 117-138. AR denarius Reference: Condition:  
Very FineWeight: 2.6g Diameter:18mm

**1**



**758** Hadrian. A.D. 117-138. AR denarius Reference: Condition:  
Very FineWeight: 2.7g Diameter:18.5mm

**1**



**759** Hadrian. A.D. 117-138. AR denarius Reference: Condition:  
Very FineWeight: 2.1g Diameter:18.3mm

**1**



**760** Hadrian. A.D. 117-138. AR denarius Reference: Condition:  
Very FineWeight: 2.9g Diameter:17.8mm

**1**



**761** Hadrian. A.D. 117-138. AR denarius Reference: Condition:  
Very FineWeight: 2.5g Diameter:19.5mm

**1**



**762** Hadrian. A.D. 117-138. AR denarius Reference: Condition:  
Very FineWeight: 2.3g Diameter:19.6mm

**1**



**763** Hadrian. A.D. 117-138. AR denarius Reference: Condition:  
Very FineWeight: 2.6g Diameter:19mm

**1**



**764** Hadrian. A.D. 117-138. AR denarius Reference: Condition: Very FineWeight: 2.5g Diameter:18mm

**1**



**765** Hadrian. A.D. 117-138. AR denarius Reference: Condition: Very FineWeight: 2.3g Diameter:18.5mm

**1**



**766** Hadrian. A.D. 117-138. AR denarius Reference: Condition: Very FineWeight: 2.7g Diameter:17.6mm

**1**



**767** Trajan. A.D. 98-117. AR denarius Reference: Condition: Very FineWeight: 2.8g Diameter:19.1mm

**1**



**768** Trajan. A.D. 98-117. AR denarius Reference: Condition: Very FineWeight: 3.3g Diameter:18.4mm

**1**



**769** Trajan. A.D. 98-117. AR denarius Reference: Condition: Very FineWeight: 2.4g Diameter:17.6mm

**1**



**770** Trajan. A.D. 98-117. AR denarius Reference: Condition: Very FineWeight: 2.9g Diameter:18mm

**1**



**771** Trajan. A.D. 98-117. AR denarius Reference: Condition: Very  
FineWeight: 2.8g Diameter:17.5mm

**1**



**772** Trajan. A.D. 98-117. AR denarius Reference: Condition: Very  
FineWeight: 2.5g Diameter:17.8mm

**1**



**773** Trajan. A.D. 98-117. AR denarius Reference: Condition: Very  
FineWeight: 2.6g Diameter:19.4mm

**1**



**774** Trajan. A.D. 98-117. AR denarius Reference: Condition: Very  
FineWeight: 3g Diameter:18.2mm

**1**



**775** Trajan. A.D. 98-117. AR denarius Reference: Condition: Very  
FineWeight: 3.2g Diameter:17.6mm

**1**



**776** Trajan. A.D. 98-117. AR denarius Reference: Condition: Very  
FineWeight: 2.7g Diameter:19.4mm

**1**



**777** Trajan. A.D. 98-117. AR denarius Reference: Condition: Very  
FineWeight: 2.5g Diameter:19.3mm

**1**



**778** Trajan. A.D. 98-117. AR denarius Reference: Condition: Very  
FineWeight: 3.1g Diameter:18.3mm

**1**



**779** Trajan. A.D. 98-117. AR denarius Reference: Condition: Very  
FineWeight: 2.9g Diameter:18.2mm

**1**



**780** Trajan. A.D. 98-117. AR denarius Reference: Condition: Very  
FineWeight: 2.4g Diameter:18.3mm

**1**



**781** Trajan. A.D. 98-117. AR denarius Reference: Condition: Very  
FineWeight: 2.8g Diameter:17.3mm

**1**



**782** Trajan. A.D. 98-117. AR denarius Reference: Condition: Very  
FineWeight: 2.7g Diameter:19mm

**1**



**783** Trajan. A.D. 98-117. AR denarius Reference: Condition: Very  
FineWeight: 2.3g Diameter:18.4mm

**1**



**784** Trajan. A.D. 98-117. AR denarius Reference: Condition: Very  
FineWeight: 2.8g Diameter:18.6mm

**1**



**785** Trajan. A.D. 98-117. AR denarius Reference: Condition: Very  
FineWeight: 2.6g Diameter:19.2mm

**1**





**786** Trajan. A.D. 98-117. AR denarius Reference: Condition: Very FineWeight: 2.7g Diameter:18.5mm

**1**



**787** Diva Faustina I. Died A.D. 140/1. AR denarius Reference: Condition: Very FineWeight: 3.2g Diameter:18.7mm

**1**



**788** Diva Faustina I. Died A.D. 140/1. AR denarius Reference: Condition: Very FineWeight: 2.8g Diameter:17.3mm

**1**



**789** Diva Faustina I. Died A.D. 140/1. AR denarius Reference: Condition: Very FineWeight: 2.8g Diameter:18.4mm

**1**



**790** Diva Faustina I. Died A.D. 140/1. AR denarius Reference: Condition: Very FineWeight: 2.7g Diameter:17.7mm

**1**



**791** Diva Faustina I. Died A.D. 140/1. AR denarius Reference: Condition: Very FineWeight: 2g Diameter:17.1mm

**1**



**792** Faustina II. Augusta, A.D. 147-175. AR denarius Reference: Condition: Very FineWeight: 2.9g Diameter:17.8mm

**1**



**793** Faustina II. Augusta, A.D. 147-175. AR denarius Reference:  
Condition: Very FineWeight: 3.1g Diameter:17.1mm

**1**



**794** Faustina II. Augusta, A.D. 147-175. AR denarius Reference:  
Condition: Very FineWeight: 3.5g Diameter:16.4mm

**1**



**795** Crispina. Augusta, A.D. 178-182. AR denarius Reference:  
Condition: Very FineWeight: 2.6g Diameter:16.7mm

**1**



**796** Julia Domna. Augusta, A.D. 193-217. AR denarius  
Reference: Condition: Very FineWeight: 3g Diameter:19.3mm

**1**



**797** Julia Domna. Augusta, A.D. 193-217. AR denarius  
Reference: Condition: Very FineWeight: 2.7g Diameter:18.7mm

**1**



**798** Caracalla. A.D. 198-217. AR denarius Reference: Condition:  
Very FineWeight: 2.8g Diameter:19.4mm

**1**



**799** Caracalla. A.D. 198-217. AR denarius Reference: Condition:  
Very FineWeight: 2.1g Diameter:18.3mm

**1**



**800** Caracalla. A.D. 198-217. AR denarius Reference: Condition: Very FineWeight: 2.3g Diameter:19.2mm

**1**



**801** Caracalla. A.D. 198-217. AR denarius Reference: Condition: Very FineWeight: 2.8g Diameter:19.5mm

**1**



**802** Caracalla. A.D. 198-217. AR denarius Reference: Condition: Very FineWeight: 2.7g Diameter:20.3mm

**1**



**803** Caracalla. A.D. 198-217. AR denarius Reference: Condition: Very FineWeight: 3g Diameter:16.9mm

**1**



**804** Caracalla. A.D. 198-217. AR denarius Reference: Condition: Very FineWeight: 2.5g Diameter:18.2mm

**1**



**805** Severus Alexander. A.D. 222-235. AR denarius Reference: Condition: Very FineWeight: 2.4g Diameter:19.6mm

**1**



**806** Severus Alexander. A.D. 222-235. AR denarius Reference: Condition: Very FineWeight: 2.4g Diameter:19.1mm

**1**



**807** Gordian III. A.D. 238-244. AR antoninianus Reference:  
Condition: Very FineWeight: 2.5g Diameter:18.8mm

**1**



**808** Gordian III. A.D. 238-244. AR antoninianus Reference:  
Condition: Very FineWeight: 2.3g Diameter:19.5mm

**1**



**809** Gordian III. A.D. 238-244. AR antoninianus Reference:  
Condition: Very FineWeight: 3.3g Diameter:21.1mm

**1**



**810** Gordian III. A.D. 238-244. AR antoninianus Reference:  
Condition: Very FineWeight: 3.9g Diameter:23.1mm

**1**



**811** Gordian III. A.D. 238-244. AR antoninianus Reference:  
Condition: Very FineWeight: 4.4g Diameter:24mm

**1**



**812** Gordian III. A.D. 238-244. AR antoninianus Reference:  
Condition: Very FineWeight: 3.5g Diameter:23mm

**1**



**813** Gordian III. A.D. 238-244. AR antoninianus Reference:  
Condition: Very FineWeight: 4.3g Diameter:21.4mm

**1**



**814** Gordian III. A.D. 238-244. AR antoninianus Reference:  
Condition: Very FineWeight: 4g Diameter:21mm

**1**



**815** Roman Imperial Coins Reference: Condition: Very  
FineWeight: 3.2g Diameter:19.6mm

**1**



**816** Roman Imperial Coins Reference: Condition: Very  
FineWeight: 2.9g Diameter:19.2mm

**1**



**817** Roman Imperial Coins Reference: Condition: Very  
FineWeight: 2.7g Diameter:23.2mm

**1**



**818** Roman Imperial Coins Reference: Condition: Very  
FineWeight: 4.4g Diameter:19.5mm

**1**



**819** Roman Imperial Coins Reference: Condition: Very  
FineWeight: 4g Diameter:21.8mm

**1**



**820** Roman Imperial Coins Reference: Condition: Very  
FineWeight: 3.6g Diameter:21.2mm

**1**





**821** Roman Imperial Coins Reference: Condition: Very  
FineWeight: 4.7g Diameter:19.6mm

**1**



**822** Roman Imperial Coins Reference: Condition: Very  
FineWeight: 3.3g Diameter:21.4mm

**1**



**823** Roman Imperial Coins Reference: Condition: Very  
FineWeight: 3.9g Diameter:22.5mm

**1**



**824** Roman Imperial Coins Reference: Condition: Very  
FineWeight: 3.6g Diameter:22.6mm

**1**



**825** Roman Imperial Coins Reference: Condition: Very  
FineWeight: 3.9g Diameter:21.4mm

**1**



**826** Roman Imperial Coins Reference: Condition: Very  
FineWeight: 4.2g Diameter:22.8mm

**1**



**827** Roman Imperial Coins Reference: Condition: Very  
FineWeight: 3.9g Diameter:22.6mm

**1**



**828** Roman Imperial Coins Reference: Condition: Very  
FineWeight: 4.4g Diameter:22.2mm

**1**



**829** Roman Imperial Coins Reference: Condition: Very  
FineWeight: 3.1g Diameter:21.2mm

**1**



**830** Roman Imperial Coins Reference: Condition: Very  
FineWeight: 3.9g Diameter:22.1mm

**1**



**831** Roman Imperial Coins Reference: Condition: Very  
FineWeight: 3.9g Diameter:22.2mm

**1**



**832** Roman Imperial Coins Reference: Condition: Very  
FineWeight: 3g Diameter:20.2mm

**1**



**833** Roman Imperial Coins Reference: Condition: Very  
FineWeight: 3.7g Diameter:20.8mm

**1**



**834** Roman Imperial Coins Reference: Condition: Very  
FineWeight: 3.3g Diameter:19.6mm

**1**



**835** Roman Imperial Coins Reference: Condition: Very  
FineWeight: 2.7 Diameter:20.6mm

**1**



**836** Roman Imperial Coins Reference: Condition: Very  
FineWeight: 3.5g Diameter:21mm

**1**



**837** Roman Imperial Coins Reference: Condition: Very  
FineWeight: 3.8g Diameter:22mm

**1**



**838** Roman Imperial Coins Reference: Condition: Very  
FineWeight: 3.8g Diameter:21.3mm

**1**



**839** Roman Imperial Coins Reference: Condition: Very  
FineWeight: 2g Diameter:21mm

**1**



**840** Roman Imperial Coins Reference: Condition: Very  
FineWeight: 3.6g Diameter:20.7mm

**1**



**841** Roman Imperial Coins Reference: Condition: Very  
FineWeight: 2.7g Diameter:21.6mm

**1**



**842** Roman Imperial Coins Reference: Condition: Very  
FineWeight: 3.1g Diameter:20.8mm

**1**



**843** Roman Imperial Coins Reference: Condition: Very  
FineWeight: 4.2g Diameter:21.1mm

**1**



**844** Roman Imperial Coins Reference: Condition: Very  
FineWeight: 3.4g Diameter:21.6mm

**1**



**845** Roman Imperial Coins Reference: Condition: Very  
FineWeight: 3.1g Diameter:21.1mm

**1**



**846** Roman Imperial Coins Reference: Condition: Very  
FineWeight: 2.6g Diameter:21.1mm

**1**



**847** Aurelian. A.D. 270-275. AE antoninianus Reference:  
Condition: Very FineWeight: 4.3g Diameter:25mm

**1**



**848** Aurelian. A.D. 270-275. AE antoninianus Reference:  
Condition: Very FineWeight: 4g Diameter:22.2mm

**1**





**849** Aurelian. A.D. 270-275. AE antoninianus Reference:  
Condition: Very FineWeight: 4.7g Diameter:24.3mm

**1**



**850** Aurelian. A.D. 270-275. AE antoninianus Reference:  
Condition: Very FineWeight: 3.2g Diameter:21.5mm

**1**



**851** Aurelian. A.D. 270-275. AE antoninianus Reference:  
Condition: Very FineWeight: 3.7g Diameter:22mm

**1**



**852** Aurelian. A.D. 270-275. AE antoninianus Reference:  
Condition: Very FineWeight: 4.6g Diameter:22.1mm

**1**



**853** Aurelian. A.D. 270-275. AE antoninianus Reference:  
Condition: Very FineWeight: 3.6g Diameter:22.8mm

**1**



**854** Probus. A.D. 276-282. AE antoninianus Reference:  
Condition: Very FineWeight: 2.8g Diameter:21.5mm

**1**



**855** Probus. A.D. 276-282. AE antoninianus Reference:  
Condition: Very FineWeight: 3.9g Diameter:21.1mm

**1**





**856** Probus. A.D. 276-282. AE antoninianus Reference:  
Condition: Very FineWeight: 3.8g Diameter:20.7mm

**1**



**857** Probus. A.D. 276-282. AE antoninianus Reference:  
Condition: Very FineWeight: 4g Diameter:22.5mm

**1**



**858** Probus. A.D. 276-282. AE antoninianus Reference:  
Condition: Very FineWeight: 4.5g Diameter:21.8mm

**1**



**859** Gallienus. A.D. 253-268. AE antoninianus Reference:  
Condition: Very FineWeight: 3.6g Diameter:22.8mm

**1**



**860** Gallienus. A.D. 253-268. AE antoninianus Reference:  
Condition: Very FineWeight: 2.4g Diameter:20.1mm

**1**



**861** Gallienus. A.D. 253-268. AE antoninianus Reference:  
Condition: Very FineWeight: 3g Diameter:19mm

**1**



**862** Gallienus. A.D. 253-268. AE antoninianus Reference:  
Condition: Very FineWeight: 3g Diameter:19mm

**1**



**863** Probus. A.D. 276-282. AE antoninianus Reference:  
Condition: Very FineWeight: 3.1g Diameter:22.1mm

**1**



**864** Probus. A.D. 276-282. AE antoninianus Reference:  
Condition: Very FineWeight: 3.4g Diameter:.20.8mm

**1**



**865** Probus. A.D. 276-282. AE antoninianus Reference:  
Condition: Very FineWeight: 4.1g Diameter:22mm

**1**



**866** Aurelian. A.D. 270-275. AE antoninianus Reference:  
Condition: Very FineWeight: 3.9g Diameter:22mm

**1**



**867** Gallienus. A.D. 253-268. AE antoninianus Reference:  
Condition: Very FineWeight: 3.5g Diameter:22mm

**1**



**868** Gallienus. A.D. 253-268. AE antoninianus Reference:  
Condition: Very FineWeight: 3.5g Diameter:21.4mm

**1**



**869** Gallienus. A.D. 253-268. AE antoninianus Reference:  
Condition: Very FineWeight: 3g Diameter:22.1mm

**1**



**870** Gallienus. A.D. 253-268. AE antoninianus Reference:  
Condition: Very FineWeight: 3.7g Diameter:21.2mm

**1**



**871** Gallienus. A.D. 253-268. AE antoninianus Reference:  
Condition: Very FineWeight: 3.6g Diameter:21.6mm

**1**



**872** Gallienus. A.D. 253-268. AE antoninianus Reference:  
Condition: Very FineWeight: 3.6g Diameter:20.3mm

**1**



**873** Gallienus. A.D. 253-268. AE antoninianus Reference:  
Condition: Very FineWeight: 3.5g Diameter:22.8mm

**1**



**874** Gallienus. A.D. 253-268. AE antoninianus Reference:  
Condition: Very FineWeight: 3.7g Diameter:20.8mm

**1**



**875** Gallienus. A.D. 253-268. AE antoninianus Reference:  
Condition: Very FineWeight: 4g Diameter:21.6mm

**1**



**876** Gallienus. A.D. 253-268. AE antoninianus Reference:  
Condition: Very FineWeight: 3.4g Diameter:22.7mm

**1**



**877** Gallienus. A.D. 253-268. AE antoninianus Reference:  
Condition: Very FineWeight: 2.9g Diameter:22.3mm

**1**



**878** Claudius II, Gothicus. A.D. 268-270. AE antoninianus  
Reference: Condition: Very FineWeight: 4.4g Diameter:22mm

**1**



**879** Claudius II, Gothicus. A.D. 268-270. AE antoninianus  
Reference: Condition: Very FineWeight: 3.6g Diameter:21.4mm

**1**



**880** Claudius II, Gothicus. A.D. 268-270. AE antoninianus  
Reference: Condition: Very FineWeight: 2.8g Diameter:21.2mm

**1**



**881** Claudius II, Gothicus. A.D. 268-270. AE antoninianus  
Reference: Condition: Very FineWeight: 3.3g Diameter:20.4mm

**1**



**882** Claudius II, Gothicus. A.D. 268-270. AE antoninianus  
Reference: Condition: Very FineWeight: 3.2g Diameter:19.4mm

**1**



**883** Claudius II, Gothicus. A.D. 268-270. AE antoninianus  
Reference: Condition: Very FineWeight: 3.6g Diameter:19.3mm

**1**





**884** Claudius II, Gothicus. A.D. 268-270. AE antoninianus  
Reference: Condition: Very FineWeight: 3g Diameter:20mm

**1**



**885** Claudius II, Gothicus. A.D. 268-270. AE antoninianus  
Reference: Condition: Very FineWeight: 3.2g Diameter:21mm

**1**



**886** Diocletian. A.D. 284-305. antoninianus Reference:  
Condition: Very FineWeight: 4.6g Diameter:21.8mm

**1**



**887** Diocletian. A.D. 284-305. antoninianus Reference:  
Condition: Very FineWeight: 3.4g Diameter:22.1mm

**1**



**888** Diocletian. A.D. 284-305. antoninianus Reference:  
Condition: Very FineWeight: 2.7g Diameter:21mm

**1**



**889** Diocletian. A.D. 284-305. antoninianus Reference:  
Condition: Very FineWeight: 3.5g Diameter:23.2mm

**1**



**890** Diocletian. A.D. 284-305. antoninianus Reference:  
Condition: Very FineWeight: 2.9g Diameter:21.8mm

**1**





**891** Diocletian. A.D. 284-305. antoninianus Reference:  
Condition: Very FineWeight: 4g Diameter:21.8mm

**1**



**892** Diocletian. A.D. 284-305. antoninianus Reference:  
Condition: Very FineWeight: 3.2g Diameter:22.4mm

**1**



**893** Diocletian. A.D. 284-305. antoninianus Reference:  
Condition: Very FineWeight: 3.6g Diameter:21.7mm

**1**



**894** Diocletian. A.D. 284-305. antoninianus Reference:  
Condition: Very FineWeight: 3.4g Diameter:22.3mm

**1**



**895** Maximianus. A.D. 286-305. antoninianus Reference:  
Condition: Very FineWeight: 4.2g Diameter:22mm

**1**



**896** Maximianus. A.D. 286-305. antoninianus Reference:  
Condition: Very FineWeight: 3.7g Diameter:21.6mm

**1**



**897** Maximianus. A.D. 286-305. antoninianus Reference:  
Condition: Very FineWeight: 3.4g Diameter:20.5mm

**1**



**898** Maximianus. A.D. 286-305. antoninianus Reference:  
Condition: Very FineWeight: 2.7g Diameter:20.5mm

**1**



**899** Maximianus. A.D. 286-305. antoninianus Reference:  
Condition: Very FineWeight: 2.8g Diameter:22.7mm

**1**



**900** Maximianus. A.D. 286-305. antoninianus Reference:  
Condition: Very FineWeight: 2.7g Diameter:23mm

**1**



**901** Maximianus. A.D. 286-305. antoninianus Reference:  
Condition: Very FineWeight: 3.1g Diameter:20.7mm

**1**



**902** Constantius I. As Caesar, A.D. 293-305. Æ antoninianus  
Reference: Condition: Very FineWeight: 3g Diameter:20.2mm

**1**



**903** Constantius I. As Caesar, A.D. 293-305. Æ antoninianus  
Reference: Condition: Very FineWeight: 2.7g Diameter:24mm

**1**



**904** Constantine I. A.D. 307/10-337. AE follis Reference:  
Condition: Very FineWeight: 3.2g Diameter:24.1mm

**1**



**905** Constantine I. A.D. 307/10-337. AE follis Reference:  
Condition: Very FineWeight: 2.5g Diameter:18mm

**1**



**906** Constantine I. A.D. 307/10-337. AE follis Reference:  
Condition: Very FineWeight: 1.8g Diameter:17.8mm

**1**



**907** Constantine I. A.D. 307/10-337. AE follis Reference:  
Condition: Very FineWeight: 2.9g Diameter:19mm

**1**



**908** Constantine I. A.D. 307/10-337. AE follis Reference:  
Condition: Very FineWeight: 2.4g Diameter:19.4mm

**1**



**909** Constantine I. A.D. 307/10-337. AE follis Reference:  
Condition: Very FineWeight: 3.1g Diameter:19.2mm

**1**



**910** Constantine I. A.D. 307/10-337. AE follis Reference:  
Condition: Very FineWeight: 2.8g Diameter:18.5mm

**1**



**911** Domitian. A.D. 81-96. AR denarius Reference: Condition:  
Very FineWeight: 3.5g Diameter:19.5mm

**1**



**912** Septimius Severus. A.D. 193-211. AR denarius Reference:  
Condition: Very FineWeight: 3.4g Diameter:17.3mm

**1**



**913** Septimius Severus. A.D. 193-211. AR denarius Reference:  
Condition: Very FineWeight: 3.3g Diameter:17mm

**1**



**914** Septimius Severus. A.D. 193-211. AR denarius Reference:  
Condition: Very FineWeight: 3.1g Diameter:16.2mm

**1**



**915** Hadrian. A.D. 117-138. AR denarius Reference: Condition:  
Very FineWeight: 3.2g Diameter:17.8mm

**1**



**916** Constantine I. A.D. 307/10-337. AE follis Reference:  
Condition: Very FineWeight: 2.8g Diameter:18mm

**1**



**917** Constantine I. A.D. 307/10-337. AE follis Reference:  
Condition: Very FineWeight: 2.1g Diameter:16mm

**1**



**918** Constantine I. A.D. 307/10-337. AE follis Reference:  
Condition: Very FineWeight: 2.6g Diameter:17.1mm

**1**





**919** Constantine I. A.D. 307/10-337. AE follis Reference:  
Condition: Very FineWeight: 2.7g Diameter:18.2mm

**1**



**920** Constantine I. A.D. 307/10-337. AE follis Reference:  
Condition: Very FineWeight: 1.5g Diameter:15.5mm

**1**



**921** Constantine I. A.D. 307/10-337. AE follis Reference:  
Condition: Very FineWeight: 2.2g Diameter:16.3mm

**1**



**922** Constantine I. A.D. 307/10-337. AE follis Reference:  
Condition: Very FineWeight: 2.5g Diameter:17.2mm

**1**



**923** Constantine I. A.D. 307/10-337. AE follis Reference:  
Condition: Very FineWeight: 1.4g Diameter:15mm

**1**



**924** Constantine I. A.D. 307/10-337. AE follis Reference:  
Condition: Very FineWeight: 2.8g Diameter:16.4mm

**1**



**925** Constantine I. A.D. 307/10-337. AE follis Reference:  
Condition: Very FineWeight: 2.4g Diameter:20.8mm

**1**





**926** Constantine I. A.D. 307/10-337. AE follis Reference:  
Condition: Very FineWeight: 2.6g Diameter:17.8mm

**1**



**927** Constantine I. A.D. 307/10-337. AE follis Reference:  
Condition: Very FineWeight: 1.6g Diameter:15.3mm

**1**



**928** Constantine I. A.D. 307/10-337. AE follis Reference:  
Condition: Very FineWeight: 2.2g Diameter:15.5mm

**1**



**929** Constantine I. A.D. 307/10-337. AE follis Reference:  
Condition: Very FineWeight: 1.4g Diameter:16mm

**1**



**930** Constantine I. A.D. 307/10-337. AE follis Reference:  
Condition: Very FineWeight: 1.7g Diameter:15.1mm

**1**



**931** Constantine I. A.D. 307/10-337. AE follis Reference:  
Condition: Very FineWeight: 1.7g Diameter:14.7mm

**1**



**932** Constantine I. A.D. 307/10-337. AE follis Reference:  
Condition: Very FineWeight: 1.8g Diameter:15mm

**1**



**933** Constantine I. A.D. 307/10-337. AE follis Reference:  
Condition: Very FineWeight: 1.1g Diameter:13.5mm

**1**



**934** Constantine I. A.D. 307/10-337. AE follis Reference:  
Condition: Very FineWeight: 2.4g Diameter:17.8mm

**1**



**935** Constantine I. A.D. 307/10-337. AE follis Reference:  
Condition: Very FineWeight: 1.9g Diameter:18.2mm

**1**



**936** Constantine I. A.D. 307/10-337. AE follis Reference:  
Condition: Very FineWeight: 2.1g Diameter:18mm

**1**



**937** Constantine I. A.D. 307/10-337. AE follis Reference:  
Condition: Very FineWeight: 2.6g Diameter:18mm

**1**



**938** Constantine I. A.D. 307/10-337. AE follis Reference:  
Condition: Very FineWeight: 2.7g Diameter:17.6mm

**1**



**939** Constantine I. A.D. 307/10-337. AE follis Reference:  
Condition: Very FineWeight: 18.7mm Diameter:18.8mm

**1**



**940** Constantine I. A.D. 307/10-337. AE follis Reference:  
Condition: Very FineWeight: 3.5g Diameter:20.6mm

**1**



**941** Constantine I. A.D. 307/10-337. AE follis Reference:  
Condition: Very FineWeight: 2.8g Diameter:18.3mm

**1**



**942** Constantine I. A.D. 307/10-337. AE follis Reference:  
Condition: Very FineWeight: 4.7g Diameter:22mm

**1**



**943** Constantine I. A.D. 307/10-337. AE follis Reference:  
Condition: Very FineWeight: 3.3g Diameter:19.4mm

**1**



**944** Constans. A.D. 337-350. AE follis Reference: Condition: Very  
FineWeight: 1.9g Diameter:18.8mm

**1**



**945** Constans. A.D. 337-350. AE follis Reference: Condition: Very  
FineWeight: 3.7g Diameter:19.4mm

**1**



**946** Constantius II. A.D. 337-361. AE Reference: Condition: Very  
FineWeight: 4.9g Diameter:22mm

**1**



**947** Constantius II. A.D. 337-361. AE Reference: Condition: Very  
FineWeight: 4.1g Diameter:19.9mm

**1**



**948** Constantius II. A.D. 337-361. AE Reference: Condition: Very  
FineWeight: 5.8g Diameter:21.8mm

**1**



**949** Constantius II. A.D. 337-361. AE Reference: Condition: Very  
FineWeight: 4.9g Diameter:20.1mm

**1**



**950** Constantius II. A.D. 337-361. AE Reference: Condition: Very  
FineWeight: 2.4g Diameter:16.4mm

**1**



**951** Constantius II. A.D. 337-361. AE Reference: Condition: Very  
FineWeight: 3.0g Diameter:21.5mm

**1**



**952** Constantine I. A.D. 307/10-337. AE follis Reference:  
Condition: Very FineWeight: 3.0g Diameter:18.8mm

**1**



**953** Constantius II. A.D. 337-361. AE Reference: Condition: Very  
FineWeight: 2.8g Diameter:19.1mm

**1**





**954** Constantius II. A.D. 337-361. AE Reference: Condition: Very FineWeight: 2.4g Diameter:15.2mm

**1**



**955** Constantius II. A.D. 337-361. AE Reference: Condition: Very FineWeight: 2.7g Diameter:17.7mm

**1**



**956** Constantine I. A.D. 307/10-337. AE follis Reference: Condition: Very FineWeight: 2.2g Diameter:18.1mm

**1**



**957** Constantine I. A.D. 307/10-337. AE follis Reference: Condition: Very FineWeight: 2.3g Diameter:16.6mm

**1**



**958** Constantine II. As Caesar, A.D. 317-337. AE Reference: Condition: Very FineWeight: 3.7g Diameter:19.1mm

**1**



**959** Constantine I. A.D. 307/10-337. AE follis Reference: Condition: Very FineWeight: 4.2g Diameter:19.3mm

**1**



**960** Constantine I. A.D. 307/10-337. AE follis Reference: Condition: Very FineWeight: 2.7g Diameter:18.6mm

**1**





**961** Constantine II. As Caesar, A.D. 317-337. AE Reference:  
Condition: Very FineWeight: 2.6.g Diameter:17.4mm

**1**



**962** Constantine II. As Caesar, A.D. 317-337. AE Reference:  
Condition: Very FineWeight: 2.5g Diameter:17.6

**1**



**963** Constantine II. As Caesar, A.D. 317-337. AE Reference:  
Condition: Very FineWeight: 2.8g Diameter:17.6

**1**



**964** Constantine II. As Caesar, A.D. 317-337. AE Reference:  
Condition: Very FineWeight: 2.3 Diameter:17.0mm

**1**



**965** Constantine II. As Caesar, A.D. 317-337. AE Reference:  
Condition: Very FineWeight: 2.4g Diameter:17.0

**1**



**966** Constantine II. As Caesar, A.D. 317-337. AE Reference:  
Condition: Very FineWeight: 2.0g Diameter:16.3mm

**1**



**967** Constantine II. As Caesar, A.D. 317-337. AE Reference:  
Condition: Very FineWeight: 2.9g Diameter:18.4mm

**1**



**968** Constantine II. As Caesar, A.D. 317-337. AE Reference:  
Condition: Very FineWeight: 2.4g Diameter:17.3mm

**1**



**969** Constantine II. As Caesar, A.D. 317-337. AE Reference:  
Condition: Very FineWeight: 1.8g Diameter:15.3mm

**1**



**970** Constantine II. As Caesar, A.D. 317-337. AE Reference:  
Condition: Very FineWeight: 1.5g Diameter:15.4mm

**1**



**971** Constantine II. As Caesar, A.D. 317-337. AE Reference:  
Condition: Very FineWeight: 2.0g Diameter:15.8mm

**1**



**972** Constantine II. As Caesar, A.D. 317-337. AE Reference:  
Condition: Very FineWeight: 1.9g Diameter:15.9mm

**1**



**973** Constantine II. As Caesar, A.D. 317-337. AE Reference:  
Condition: Very FineWeight: 2.3g Diameter:16.8mm

**1**



**974** Constantine II. As Caesar, A.D. 317-337. AE Reference:  
Condition: Very FineWeight: 2.3g Diameter:16.8mm

**1**



**975** Constantine II. As Caesar, A.D. 317-337. AE Reference:  
Condition: Very FineWeight: 2.3g Diameter:17,8mm

**1**



**976** Constantine II. As Caesar, A.D. 317-337. AE Reference:  
Condition: Very FineWeight: 3.5g Diameter:17.6mm

**1**



**977** Constantine II. As Caesar, A.D. 317-337. AE Reference:  
Condition: Very FineWeight: 3.1g Diameter:17.5mm

**1**



**978** Constantine II. As Caesar, A.D. 317-337. AE Reference:  
Condition: Very FineWeight: 2.6g Diameter:19.0mm

**1**



**979** Constantine II. As Caesar, A.D. 317-337. AE Reference:  
Condition: Very FineWeight: 2.1g Diameter:17.2mm

**1**



**980** Constantine II. As Caesar, A.D. 317-337. AE Reference:  
Condition: Very FineWeight: 3.0g Diameter:16.4mm

**1**



**981** Licinius I (308-324). Æ Follis. Thessalonica, c. AD 319.  
Laureate and cuirassed bust r. R/ Sol, raising r. hand and holding  
globe in l., standing slightly l. in centre of plan of Roman camp;  
RIC VII 68. Rar Condition: Very FineWeight: 2.9g  
Diameter:18.8mm

**1**



**982** Licinius I (308-324). Æ Follis Reference: Condition: Very  
FineWeight: 4g Diameter:20.2mm

**1**



**983** Licinius I (308-324). Æ Follis Reference: Condition: Very  
FineWeight: 2.9g Diameter:19.8mm

**1**



**984** Licinius I (308-324). Æ Follis Reference: Condition: Very  
FineWeight: 2.7g Diameter:20mm

**1**



**985** Licinius I (308-324). Æ Follis Reference: Condition: Very  
FineWeight: 3.9g Diameter:19mm

**1**



**986** Licinius I (308-324). Æ Follis Reference: Condition: Very  
FineWeight: 3.1g Diameter:19.2mm

**1**



**987** Faustina I, Wife of Antonius Pius (circa 138-139 AD). Rome  
Reference: Condition: Very FineWeight: 2.9g Diameter:19.7mm

**1**



**988** Constans. A.D. 337-350. AE follis Reference: Condition: Very  
FineWeight: 4.3g Diameter:19.2mm

**1**





**989** Licinius I (308-324). Æ Follis Reference: Condition: Very  
FineWeight: 3.1g Diameter:18.8mm

**1**



**990** Licinius I (308-324). Æ Follis Reference: Condition: Very  
FineWeight: 3.5g Diameter:19.1mm

**1**



**991** Licinius I (308-324). Æ Follis Reference: Condition: Very  
FineWeight: 2.8g Diameter:18.6mm

**1**



**992** Licinius I (308-324). Æ Follis Reference: Condition: Very  
FineWeight: 2.9g Diameter:19.3mm

**1**



**993** Constantius II. A.D. 337-361. AE Reference: Condition: Very  
FineWeight: 1.8g Diameter:15.5mm

**1**



**994** Constantius II. A.D. 337-361. AE Reference: Condition: Very  
FineWeight: 1.5g Diameter:15mm

**1**



**995** Arcadius. A.D. 383-408. AE Reference: Condition: Very  
FineWeight: 2.5g Diameter:17mm

**1**





**996** Arcadius. A.D. 383-408. AE Reference: Condition: Very  
FineWeight: 1.9g Diameter:17.6mm

**1**



**997** Gratian. A.D. 367-383. AE Reference: Condition: Very  
FineWeight: 2.1g Diameter:17.1mm

**1**



**998** Gratian. A.D. 367-383. AE Reference: Condition: Very  
FineWeight: 2.9g Diameter:18.6mm

**1**



**999** Valentinian I. A.D. 364-375. AE Reference: Condition: Very  
FineWeight: 2.7g Diameter:18.1mm

**1**



**1000** Gratian. A.D. 367-383. AE Reference: Condition: Very  
FineWeight: 2.1g Diameter:16.6mm

**1**



**1001** Gratian. A.D. 367-383. AE Reference: Condition: Very  
FineWeight: 2.9g Diameter:18mm

**1**



**1002** Theodosius I. A.D. 379-395. AE Reference: Condition: Very  
FineWeight: 2.3g Diameter:19.2mm

**1**



**1003** Theodosius I. A.D. 379-395. AE Reference: Condition: Very  
FineWeight: 2.5g Diameter:18mm

**1**



**1004** Theodosius I. A.D. 379-395. AE Reference: Condition: Very  
FineWeight: 1.8g Diameter:18.3mm

**1**



**1005** Theodosius I. A.D. 379-395. AE Reference: Condition: Very  
FineWeight: 2.5g Diameter:16mm

**1**



**1006** Theodosius I. A.D. 379-395. AE Reference: Condition: Very  
FineWeight: 2.3g Diameter:18.5mm

**1**



**1007** Valentinian I. A.D. 364-375. AE Reference: Condition: Very  
FineWeight: 3g Diameter:18.2mm

**1**



**1008** Valentinian I. A.D. 364-375. AE Reference: Condition: Very  
FineWeight: 3.4g Diameter:18.2mm

**1**



**1009** Valentinian I. A.D. 364-375. AE Reference: Condition: Very  
FineWeight: 2g Diameter:18mm

**1**



**1010** Valentinian I. A.D. 364-375. AE Reference: Condition: Very FineWeight: 2.6g Diameter:17.1mm

**1**



**1011** Julian II. A.D. 360-363. AE follis Reference: Condition: Very FineWeight: 2.5g Diameter:17.7mm

**1**



**1012** Julian II. A.D. 360-363. AE follis Reference: Condition: Very FineWeight: 3.7g Diameter:18.4mm

**1**



**1013** Julian II. A.D. 360-363. AE follis Reference: Condition: Very FineWeight: 4g Diameter:16.3mm

**1**



**1014** Procopius. A.D. 365-366. AE centenionalis Reference: Condition: Very FineWeight: 3g Diameter:17.2mm

**1**



**1015** Valens. A.D. 364-378. AE Reference: Condition: Very FineWeight: 2.5g Diameter:16.5mm

**1**



**1016** Valentinian I. A.D. 364-375. AE Reference: Condition: Very FineWeight: 2.3g Diameter:17.4mm

**1**



**1017** Delmatius. Caesar, A.D. 335-337. AE Reference: Condition: Very FineWeight: 2.2g Diameter:17.2mm

**1**



**1018** Maximinus II. AD 310-313. Æ Follis. 'Persecution' issue. Antioch mint Reference: Condition: Very FineWeight: 1.9g Diameter:14.3mm

**1**



**1019** Maximinus II. AD 310-313. Æ Follis. 'Persecution' issue. Antioch mint Reference: Condition: Very FineWeight: 1.4g Diameter:13.8mm

**1**



**1020** Maximinus II. AD 310-313. Æ Follis. 'Persecution' issue. Antioch mint Reference: Condition: Very FineWeight: 1.4g Diameter:15.9mm

**1**



**1021** Aelia Eudoxia. Augusta, A.D. 400-404. AE. Reference: Condition: Very FineWeight: 3.1g Diameter:16.6mm

**1**



**1022** Aelia Eudoxia. Augusta, A.D. 400-404. AE. Reference: Condition: Very FineWeight: 3.3g Diameter:17mm

**1**



**1023** Aelia Eudoxia. Augusta, A.D. 400-404. AE. Reference: Condition: Very FineWeight: 2.7g Diameter:15.3mm

**1**





**1024** Aelia Flaccilla. Augusta, A.D. 379-386/8. AE Reference:  
Condition: Very FineWeight: 1g Diameter:12.5mm

**1**



**1025** Helena. Augusta, A.D. 324-328/30. AE Reference:  
Condition: Very FineWeight: 1.3g Diameter:15.6mm

**1**



**1026** Helena. Augusta, A.D. 324-328/30. AE Reference:  
Condition: Very FineWeight: 2.8g Diameter:20.1mm

**1**



**1027** Helena. Augusta, A.D. 324-328/30. AE Reference:  
Condition: Very FineWeight: 2.5g Diameter:19.8mm

**1**



**1028** Constans AD 337-350. Ae Reference: Condition: Very  
FineWeight: 2.5g Diameter:15.7mm

**1**



**1029** Magnus Maximus AE. AD 387-388. Reference: Condition:  
Very FineWeight: 1.5g Diameter:12.4mm

**1**



**1030** Vandal , Ae Reference: Condition: Very FineWeight: 0.6g  
Diameter:9.8mm

**1**





**1031** PONTOS. Pharnakeia. Circa 95-90 BC. AE Reference:  
Condition: Very FineWeight: 7.7g Diameter:20mm

**1**



**1032** Pontos. Amisos. Ae. 82-72 BC. Reference: Condition: Very  
FineWeight: 8.5g Diameter:20mm

**1**



**1033** Pontos. Amisos. Ae. 82-72 BC. Reference: Condition: Very  
FineWeight: 8.4g Diameter:20.2mm

**1**



**1034** Judaea. Jerusalem. Procurators. AD 52-60. AE Reference:  
Condition: Very FineWeight: 1.6g Diameter:16.6mm

**1**



**1035** Judaea. Jerusalem. Procurators. AD 52-60. AE Reference:  
Condition: Very FineWeight: 3.5g Diameter:17.8mm

**1**



**1036** Byzantine Coins AE, 7th - 13th Centuries. Reference:  
Condition: Very FineWeight: 17.8g Diameter:35mm

**1**



**1037** Byzantine Coins AE, 7th - 13th Centuries. Reference:  
Condition: Very FineWeight: 23.5g Diameter:42.6mm

**1**



**1038** Byzantine Coins AE, 7th - 13th Centuries. Reference:  
Condition: Very FineWeight: 7.9g Diameter:29mm

**1**



**1039** Byzantine Coins AE, 7th - 13th Centuries. Reference:  
Condition: Very FineWeight: 22.7g Diameter:38.8mm

**1**



**1040** Byzantine Coins AE, 7th - 13th Centuries. Reference:  
Condition: Very FineWeight: 18.1g Diameter:32.2mm

**1**



**1041** Byzantine Coins AE, 7th - 13th Centuries. Reference:  
Condition: Very FineWeight: 18.1g Diameter:29.8mm

**1**



**1042** Byzantine Coins AE, 7th - 13th Centuries. Reference:  
Condition: Very FineWeight: 17.5g Diameter:29mm

**1**



**1043** Byzantine Coins AE, 7th - 13th Centuries. Reference:  
Condition: Very FineWeight: 6.6g Diameter:22.2mm

**1**



**1044** Byzantine Coins AE, 7th - 13th Centuries. Reference:  
Condition: Very FineWeight: 17.5g Diameter:30.5mm

**1**



**1045** Byzantine Coins AE, 7th - 13th Centuries. Reference:  
Condition: Very FineWeight: 16.5g Diameter:27.6mm

**1**



**1046** Byzantine Coins AE, 7th - 13th Centuries. Reference:  
Condition: Very FineWeight: 15.5g Diameter:30.1mm

**1**



**1047** Byzantine Coins AE, 7th - 13th Centuries. Reference:  
Condition: Very FineWeight: 10.3g Diameter:29mm

**1**



**1048** Byzantine Coins AE, 7th - 13th Centuries. Reference:  
Condition: Very FineWeight: 13.2g Diameter:30.4mm

**1**



**1049** Byzantine Coins AE, 7th - 13th Centuries. Reference:  
Condition: Very FineWeight: 14.7g Diameter:31.8mm

**1**



**1050** Byzantine Coins AE, 7th - 13th Centuries. Reference:  
Condition: Very FineWeight: 16.3g Diameter:29.1mm

**1**



**1051** Byzantine Coins AE, 7th - 13th Centuries. Reference:  
Condition: Very FineWeight: 8.7g Diameter:23.8mm

**1**



**1052** Byzantine Coins AE, 7th - 13th Centuries. Reference:  
Condition: Very FineWeight: 5.2g Diameter:22mm

**1**



**1053** Byzantine Coins AE, 7th - 13th Centuries. Reference:  
Condition: Very FineWeight: 3.6g Diameter:20.2mm

**1**



**1054** Byzantine Coins AE, 7th - 13th Centuries. Reference:  
Condition: Very FineWeight: 3.6g Diameter:19mm

**1**



**1055** Byzantine Coins AE, 7th - 13th Centuries. Reference:  
Condition: Very FineWeight: 1.8g Diameter:16.3mm

**1**



**1056** Byzantine Coins AE, 7th - 13th Centuries. Reference:  
Condition: Very FineWeight: 2.4g Diameter:13.7mm

**1**



**1057** Byzantine Coins AE, 7th - 13th Centuries. Reference:  
Condition: Very FineWeight: 1.7g Diameter:15mm

**1**



**1058** Byzantine Coins AE, 7th - 13th Centuries. Reference:  
Condition: Very FineWeight: 2.1g Diameter:15.4mm

**1**





**1059** Byzantine Coins AE, 7th - 13th Centuries. Reference:  
Condition: Very FineWeight: 1.1g Diameter:14.3mm

**1**



**1060** Byzantine Coins AE, 7th - 13th Centuries. Reference:  
Condition: Very FineWeight: 5.1g Diameter:20.2mm

**1**



**1061** Byzantine Coins AE, 7th - 13th Centuries. Reference:  
Condition: Very FineWeight: 4.4g Diameter:21.5mm

**1**



**1062** Byzantine Coins AE, 7th - 13th Centuries. Reference:  
Condition: Very FineWeight: 4.9g Diameter:21.5mm

**1**



**1063** Byzantine Coins AE, 7th - 13th Centuries. Reference:  
Condition: Very FineWeight: 16.7g Diameter:28.3mm

**1**



**1064** Byzantine Coins AE, 7th - 13th Centuries. Reference:  
Condition: Very FineWeight: 7.9g Diameter:27.3mm

**1**



**1065** Byzantine Coins AE, 7th - 13th Centuries. Reference:  
Condition: Very FineWeight: 6.1g Diameter:17.8mm

**1**





**1066** Byzantine Coins AE, 7th - 13th Centuries. Reference:  
Condition: Very FineWeight: 4.7g Diameter:17.2mm

**1**



**1067** Byzantine Coins AE, 7th - 13th Centuries. Reference:  
Condition: Very FineWeight: 6.7g Diameter:17.8mm

**1**



**1068** Byzantine Coins AE, 7th - 13th Centuries. Reference:  
Condition: Very FineWeight: 1.5g Diameter:12mm

**1**



**1069** Byzantine Coins AE, 7th - 13th Centuries. Reference:  
Condition: Very FineWeight: 3.7g Diameter:22mm

**1**



**1070** Byzantine Coins AE, 7th - 13th Centuries. Reference:  
Condition: Very FineWeight: 7.2g Diameter:26.6mm

**1**



**1071** Byzantine Coins AE, 7th - 13th Centuries. Reference:  
Condition: Very FineWeight: 4.7g Diameter:23.4mm

**1**



**1072** Byzantine Coins AE, 7th - 13th Centuries. Reference:  
Condition: Very FineWeight: 5.6g Diameter:23.5mm

**1**



**1073** Byzantine Coins AE, 7th - 13th Centuries. Reference:  
Condition: Very FineWeight: 14.6g Diameter:27.4mm

**1**



**1074** Byzantine Coins AE, 7th - 13th Centuries. Reference:  
Condition: Very FineWeight: 12.8g Diameter:27.7mm

**1**



**1075** Byzantine Coins AE, 7th - 13th Centuries. Reference:  
Condition: Very FineWeight: 15g Diameter:32.7mm

**1**



**1076** Byzantine Coins AE, 7th - 13th Centuries. Reference:  
Condition: Very FineWeight: 6.7g Diameter:24mm

**1**



**1077** Byzantine Coins AE, 7th - 13th Centuries. Reference:  
Condition: Very FineWeight: 7.3g Diameter:21.8mm

**1**



**1078** Byzantine Coins AE, 7th - 13th Centuries. Reference:  
Condition: Very FineWeight: 6.4g Diameter:26mm

**1**



**1079** Byzantine Coins AE, 7th - 13th Centuries. Reference:  
Condition: Very FineWeight: 5.5g Diameter:21.4mm

**1**



**1080** Byzantine Coins AE, 7th - 13th Centuries. Reference:  
Condition: Very FineWeight: 5.5g Diameter:20mm

**1**



**1081** Byzantine Coins AE, 7th - 13th Centuries. Reference:  
Condition: Very FineWeight: 3.3g Diameter:19mm

**1**



**1082** Byzantine Coins AE, 7th - 13th Centuries. Reference:  
Condition: Very FineWeight: 3.3g Diameter:19mm

**1**



**1083** Byzantine Coins AE, 7th - 13th Centuries. Reference:  
Condition: Very FineWeight: 2.2g Diameter:16.5mm

**1**



**1084** Byzantine Coins AE, 7th - 13th Centuries. Reference:  
Condition: Very FineWeight: 2.7g Diameter:17mm

**1**



**1085** Byzantine Coins AE, 7th - 13th Centuries. Reference:  
Condition: Very FineWeight: 5.8g Diameter:20.2mm

**1**



**1086** Byzantine Coins AE, 7th - 13th Centuries. Reference:  
Condition: Very FineWeight: 4.8g Diameter:20.5mm

**1**



**1087** Byzantine Coins AE, 7th - 13th Centuries. Reference:  
Condition: Very FineWeight: 6.4g Diameter:24.1mm

**1**



**1088** Byzantine Coins AE, 7th - 13th Centuries. Reference:  
Condition: Very FineWeight: 5.6g Diameter:24.5mm

**1**



**1089** Byzantine Coins AE, 7th - 13th Centuries. Reference:  
Condition: Very FineWeight: 10.9g Diameter:25.4mm

**1**



**1090** Byzantine Coins AE, 7th - 13th Centuries. Reference:  
Condition: Very FineWeight: 10.3g Diameter:27.3mm

**1**



**1091** Byzantine Coins AE, 7th - 13th Centuries. Reference:  
Condition: Very FineWeight: 11.2g Diameter:29.2mm

**1**



**1092** Byzantine Coins AE, 7th - 13th Centuries. Reference:  
Condition: Very FineWeight: 6g Diameter:22.5mm

**1**



**1093** Byzantine Coins AE, 7th - 13th Centuries. Reference:  
Condition: Very FineWeight: 5.5g Diameter:23.2mm

**1**





**1094** Byzantine Coins AE, 7th - 13th Centuries. Reference:  
Condition: Very FineWeight: 6.8g Diameter:25.2mm

**1**



**1095** Byzantine Coins AE, 7th - 13th Centuries. Reference:  
Condition: Very FineWeight: 2.6g Diameter:16.8mm

**1**



**1096** Byzantine Coins AE, 7th - 13th Centuries. Reference:  
Condition: Very FineWeight: 5.4g Diameter:20mm

**1**



**1097** Byzantine Coins AE, 7th - 13th Centuries. Reference:  
Condition: Very FineWeight: 4.9g Diameter:21.8mm

**1**



**1098** Byzantine Coins AE, 7th - 13th Centuries. Reference:  
Condition: Very FineWeight: 6.2g Diameter:26.2mm

**1**



**1099** Byzantine Coins AE, 7th - 13th Centuries. Reference:  
Condition: Very FineWeight: 6.1g Diameter:23.8mm

**1**



**1100** Byzantine Coins AE, 7th - 13th Centuries. Reference:  
Condition: Very FineWeight: 12.1g Diameter:30mm

**1**





**1101** Byzantine Coins AE, 7th - 13th Centuries. Reference:  
Condition: Very FineWeight: 5.7g Diameter:24.2mm

**1**



**1102** Byzantine Coins AE, 7th - 13th Centuries. Reference:  
Condition: Very FineWeight: 6.4g Diameter:23.1mm

**1**



**1103** Byzantine Coins AE, 7th - 13th Centuries. Reference:  
Condition: Very FineWeight: 6.4g Diameter:23.1mm

**1**



**1104** Byzantine Coins AE, 7th - 13th Centuries. Reference:  
Condition: Very FineWeight: 5.3g Diameter:23mm

**1**



**1105** Byzantine Coins AE, 7th - 13th Centuries. Reference:  
Condition: Very FineWeight: 4.8g Diameter:20.6mm

**1**



**1106** Byzantine Coins AE, 7th - 13th Centuries. Reference:  
Condition: Very FineWeight: 3g Diameter:18.8mm

**1**



**1107** Byzantine Coins AE, 7th - 13th Centuries. Reference:  
Condition: Very FineWeight: 3.5g Diameter:18.4mm

**1**



**1108** Byzantine Coins AE, 7th - 13th Centuries. Reference:  
Condition: Very FineWeight: 2.8g Diameter:18.6mm

**1**



**1109** Byzantine Coins AE, 7th - 13th Centuries. Reference:  
Condition: Very FineWeight: 2.8g Diameter:17mm

**1**



**1110** Byzantine Coins AE, 7th - 13th Centuries. Reference:  
Condition: Very FineWeight: 3.8g Diameter:18mm

**1**



**1111** Byzantine Coins AE, 7th - 13th Centuries. Reference:  
Condition: Very FineWeight: 2.3g Diameter:16.6mm

**1**



**1112** Byzantine Coins AE, 7th - 13th Centuries. Reference:  
Condition: Very FineWeight: 2.3g Diameter:16.7mm

**1**



**1113** Byzantine Coins AE, 7th - 13th Centuries. Reference:  
Condition: Very FineWeight: 2.2g Diameter:18.4mm

**1**



**1114** Byzantine Coins AE, 7th - 13th Centuries. Reference:  
Condition: Very FineWeight: 3.5g Diameter:18.4mm

**1**



**1115** Byzantine Coins AE, 7th - 13th Centuries. Reference:  
Condition: Very FineWeight: 3g Diameter:17.5mm

**1**



**1116** Byzantine Coins AE, 7th - 13th Centuries. Reference:  
Condition: Very FineWeight: 2.4g Diameter:17.4mm

**1**



**1117** Byzantine Coins AE, 7th - 13th Centuries. Reference:  
Condition: Very FineWeight: 11.5g Diameter:29.5mm

**1**



**1118** Byzantine Coins AE, 7th - 13th Centuries. Reference:  
Condition: Very FineWeight: 11.6g Diameter:29.2mm

**1**



**1119** Byzantine Coins AE, 7th - 13th Centuries. Reference:  
Condition: Very FineWeight: 10.7g Diameter:28mm

**1**



**1120** Byzantine Coins AE, 7th - 13th Centuries. Reference:  
Condition: Very FineWeight: 5.3g Diameter:23mm

**1**



**1121** Byzantine Coins AE, 7th - 13th Centuries. Reference:  
Condition: Very FineWeight: 5g Diameter:22.8mm

**1**



**1122** Byzantine Coins AE, 7th - 13th Centuries. Reference:  
Condition: Very FineWeight: 5.4g Diameter:22.3mm

**1**



**1123** Byzantine Coins AE, 7th - 13th Centuries. Reference:  
Condition: Very FineWeight: 4.8g Diameter:26.4mm

**1**



**1124** Byzantine Coins AE, 7th - 13th Centuries. Reference:  
Condition: Very FineWeight: 9.9g Diameter:26.2mm

**1**



**1125** Byzantine Coins AE, 7th - 13th Centuries. Reference:  
Condition: Very FineWeight: 5.4g Diameter:22.8mm

**1**



**1126** Byzantine Coins AE, 7th - 13th Centuries. Reference:  
Condition: Very FineWeight: 4.2g Diameter:21.1mm

**1**



**1127** Byzantine Coins AE, 7th - 13th Centuries. Reference:  
Condition: Very FineWeight: 2.4g Diameter:21.5mm

**1**



**1128** Byzantine Coins AE, 7th - 13th Centuries. Reference:  
Condition: Very FineWeight: 3g Diameter:20.7mm

**1**





**1129** Byzantine Coins AE, 7th - 13th Centuries. Reference:  
Condition: Very FineWeight: 4.1g Diameter:20.3mm

**1**



**1130** Byzantine Coins AE, 7th - 13th Centuries. Reference:  
Condition: Very FineWeight: 3.8g Diameter:22mm

**1**



**1131** Byzantine Coins AE, 7th - 13th Centuries. Reference:  
Condition: Very FineWeight: 2.5g Diameter:25.7mm

**1**



**1132** Byzantine Coins AE, 7th - 13th Centuries. Reference:  
Condition: Very FineWeight: 4.8g Diameter:21mm

**1**



**1133** Byzantine Coins AE, 7th - 13th Centuries. Reference:  
Condition: Very FineWeight: 4.2g Diameter:23.4mm

**1**



**1134** Byzantine Coins AE, 7th - 13th Centuries. Reference:  
Condition: Very FineWeight: 8g Diameter:27.6mm

**1**



**1135** Byzantine Coins AE, 7th - 13th Centuries. Reference:  
Condition: Very FineWeight: 7.3g Diameter:26.3mm

**1**





**1136** Byzantine Coins AE, 7th - 13th Centuries. Reference:  
Condition: Very FineWeight: 10.4g Diameter:31.1mm

**1**



**1137** Byzantine Coins AE, 7th - 13th Centuries. Reference:  
Condition: Very FineWeight: 13.5g Diameter:28.4mm

**1**



**1138** Byzantine Coins AE, 7th - 13th Centuries. Reference:  
Condition: Very FineWeight: 8.5g Diameter:27.4mm

**1**



**1139** Byzantine Coins AE, 7th - 13th Centuries. Reference:  
Condition: Very FineWeight: 10.4g Diameter:28.5mm

**1**



**1140** Byzantine Coins AE, 7th - 13th Centuries. Reference:  
Condition: Very FineWeight: 10.2g Diameter:27.1mm

**1**



**1141** Byzantine Coins AE, 7th - 13th Centuries. Reference:  
Condition: Very FineWeight: 11.5g Diameter:32.1mm

**1**



**1142** Byzantine Coins AE, 7th - 13th Centuries. Reference:  
Condition: Very FineWeight: 12.3g Diameter:28.8mm

**1**



**1143** Byzantine Coins AE, 7th - 13th Centuries. Reference:  
Condition: Very FineWeight: 5.4g Diameter:25.5mm

**1**



**1144** Byzantine Coins AE, 7th - 13th Centuries. Reference:  
Condition: Very FineWeight: 8.2g Diameter:26.1mm

**1**



**1145** Byzantine Coins AE, 7th - 13th Centuries. Reference:  
Condition: Very FineWeight: 8.9g Diameter:28.1mm

**1**



**1146** Byzantine Coins AE, 7th - 13th Centuries. Reference:  
Condition: Very FineWeight: 12.7g Diameter:29.2mm

**1**



**1147** Byzantine Coins AE, 7th - 13th Centuries. Reference:  
Condition: Very FineWeight: 7.3g Diameter:29.7mm

**1**



**1148** Byzantine Coins AE, 7th - 13th Centuries. Reference:  
Condition: Very FineWeight: 8.6g Diameter:30.8mm

**1**



**1149** Byzantine Coins AE, 7th - 13th Centuries. Reference:  
Condition: Very FineWeight: 8.3g Diameter:26.5mm

**1**



**1150** Byzantine Coins AE, 7th - 13th Centuries. Reference:  
Condition: Very FineWeight: 12.2g Diameter:30.8mm

**1**



**1151** Byzantine Coins AE, 7th - 13th Centuries. Reference:  
Condition: Very FineWeight: 9.4g Diameter:31.5mm

**1**



**1152** Crusaders Coins AR, 11th - 13th Centuries. Reference:  
Condition: Very FineWeight: 1g Diameter:18.2mm

**1**



**1153** Crusaders Coins AR, 11th - 13th Centuries. Reference:  
Condition: Very FineWeight: 0.9g Diameter:17.3mm

**1**



**1154** Crusaders Coins AR, 11th - 13th Centuries. Reference:  
Condition: Very FineWeight: 1g Diameter:17.8mm

**1**



**1155** Crusaders Coins AR, 11th - 13th Centuries. Reference:  
Condition: Very FineWeight: 1g Diameter:17.6mm

**1**



**1156** Crusaders Coins AR, 11th - 13th Centuries. Reference:  
Condition: Very FineWeight: 0.9g Diameter:18.2mm

**1**



**1157** Crusaders Coins AR, 11th - 13th Centuries. Reference:  
Condition: Very FineWeight: 1.1g Diameter:17.6mm

**1**



**1158** Crusaders Coins AR, 11th - 13th Centuries. Reference:  
Condition: Very FineWeight: 1g Diameter:17.4mm

**1**



**1159** Crusaders Coins Ae, 11th - 13th Centuries. Reference:  
Condition: Very FineWeight: 2.2g Diameter:19.8mm

**1**



**1160** Crusaders Coins Ae, 11th - 13th Centuries. Reference:  
Condition: Very FineWeight: 2.5g Diameter:18.6mm

**1**



**1161** Crusaders Coins Ae, 11th - 13th Centuries. Reference:  
Condition: Very FineWeight: 4.6g Diameter:23.5mm

**1**



**1162** Crusaders Coins Ae, 11th - 13th Centuries. Reference:  
Condition: Very FineWeight: 3.4g Diameter:20.3mm

**1**



**1163** Crusaders Coins Ae, 11th - 13th Centuries. Reference:  
Condition: Very FineWeight: 4.1g Diameter:23mm

**1**





**1164** Crusaders Coins Ae, 11th - 13th Centuries. Reference:  
Condition: Very FineWeight: 3.7g Diameter:24.2mm

**1**



**1165** Crusaders Coins Ae, 11th - 13th Centuries. Reference:  
Condition: Very FineWeight: 5.1g Diameter:22.2mm

**1**



**1166** Crusaders Coins Ae, 11th - 13th Centuries. Reference:  
Condition: Very FineWeight: 2.8g Diameter:20.8mm

**1**



**1167** Crusaders Coins Ae, 11th - 13th Centuries. Reference:  
Condition: Very FineWeight: 2.5g Diameter:22.4mm

**1**



**1168** Crusaders Coins Ae, 11th - 13th Centuries. Reference:  
Condition: Very FineWeight: 4.8g Diameter:22.5mm

**1**



**1169** Crusaders Coins Ae, 11th - 13th Centuries. Reference:  
Condition: Very FineWeight: 1.6g Diameter:20.6mm

**1**



**1170** Crusaders Coins Ae, 11th - 13th Centuries. Reference:  
Condition: Very FineWeight: 2.3g Diameter:23mm

**1**





**1171** Crusaders Coins Ae, 11th - 13th Centuries. Reference:  
Condition: Very FineWeight: 3.5g Diameter:20.6mm

**1**



**1172** Crusaders Coins Ae, 11th - 13th Centuries. Reference:  
Condition: Very FineWeight: 3.7g Diameter:21mm

**1**



**1173** Crusaders Coins Ae, 11th - 13th Centuries. Reference:  
Condition: Very FineWeight: 0.4g Diameter:13.7mm

**1**



**1174** Crusaders Coins Ae, 11th - 13th Centuries. Reference:  
Condition: Very FineWeight: 0.8g Diameter:15.1mm

**1**



**1175** Crusaders Coins AR, 11th - 13th Centuries. Reference:  
Condition: Very FineWeight: 0.5g Diameter:15.2mm

**1**



**1176** Crusaders Coins AR, 11th - 13th Centuries. Reference:  
Condition: Very FineWeight: 1.2g Diameter:18.1mm

**1**



**1177** Crusaders Coins AR, 11th - 13th Centuries. Reference:  
Condition: Very FineWeight: 1g Diameter:16.1mm

**1**



**1178** Crusaders Coins AR, 11th - 13th Centuries. Reference:  
Condition: Very FineWeight: 0.9g Diameter:16.2mm

**1**



**1179** Crusaders Coins AR, 11th - 13th Centuries. Reference:  
Condition: Very FineWeight: 1g Diameter:16mm

**1**



**1180** Crusaders Coins AR, 11th - 13th Centuries. Reference:  
Condition: Very FineWeight: 0.9g Diameter:16.7mm

**1**



**1181** Crusaders Coins AR, 11th - 13th Centuries. Reference:  
Condition: Very FineWeight: 2.9g Diameter:24.5mm

**1**



**1182** Crusaders Coins AR, 11th - 13th Centuries. Reference:  
Condition: Very FineWeight: 26.1g Diameter:40.3mm

**1**



**1183** Crusaders Coins AR, 11th - 13th Centuries. Reference:  
Condition: Very FineWeight: 0.8g Diameter:16.8mm

**1**



**1184** Crusaders Coins AR, 11th - 13th Centuries. Reference:  
Condition: Very FineWeight: 0.7g Diameter:17.4mm

**1**



**1185** Crusaders Coins AR, 11th - 13th Centuries. Reference:  
Condition: Very FineWeight: 2.8g Diameter:26.4mm

**1**



**1186** Crusaders Coins AR, 11th - 13th Centuries. Reference:  
Condition: Very FineWeight: 0.8g Diameter:21.1mm

**1**



**1187** Crusaders Coins AR, 11th - 13th Centuries. Reference:  
Condition: Very FineWeight: 6.9g Diameter:29mm

**1**



**1188** Armenian Coins AR, 11th - 13th Centuries. Reference:  
Condition: Very FineWeight: 2.7g Diameter:22.4mm

**1**



**1189** Armenian Coins AR, 11th - 13th Centuries. Reference:  
Condition: Very FineWeight: 2.4g Diameter:20.4mm

**1**



**1190** Armenian Coins AR, 11th - 13th Centuries. Reference:  
Condition: Very FineWeight: 2.2g Diameter:20mm

**1**



**1191** Armenian Coins AR, 11th - 13th Centuries. Reference:  
Condition: Very FineWeight: Diameter:

**1**



**1192** Armenian Coins AR, 11th - 13th Centuries. Reference:  
Condition: Very FineWeight: Diameter:

**1**



**1193** Armenian Coins AR, 11th - 13th Centuries. Reference:  
Condition: Very FineWeight: Diameter:

**1**



**1194** Armenian Coins AR, 11th - 13th Centuries. Reference:  
Condition: Very FineWeight: Diameter:

**1**



**1195** Armenian Coins AR, 11th - 13th Centuries. Reference:  
Condition: Very FineWeight: Diameter:

**1**



**1196** Armenian Coins AR, 11th - 13th Centuries. Reference:  
Condition: Very FineWeight: Diameter:

**1**



**1197** Armenian Coins AR, 11th - 13th Centuries. Reference:  
Condition: Very FineWeight: 1.2g Diameter:16mm

**1**



**1198** Armenian Coins AR, 11th - 13th Centuries. Reference:  
Condition: Very FineWeight: 0.6g Diameter:12.5mm

**1**



**1199** Armenian Coins AE, 11th - 13th Centuries. Reference:  
Condition: Very FineWeight: 4g Diameter:24.2mm

**1**



**1200** Armenian Coins AE, 11th - 13th Centuries. Reference:  
Condition: Very FineWeight: 3.1g Diameter:22.6mm

**1**



**1201** Armenian Coins AE, 11th - 13th Centuries. Reference:  
Condition: Very FineWeight: 2.9g Diameter:22.5mm

**1**



**1202** Armenian Coins AE, 11th - 13th Centuries. Reference:  
Condition: Very FineWeight: 7g Diameter:26mm

**1**



**1203** Armenian Coins AE, 11th - 13th Centuries. Reference:  
Condition: Very FineWeight: 3.6g Diameter:21mm

**1**



**1204** Armenian Coins AE, 11th - 13th Centuries. Reference:  
Condition: Very FineWeight: 3.6g Diameter:22.2mm

**1**



**1205** Armenian Coins AE, 11th - 13th Centuries. Reference:  
Condition: Very FineWeight: 2.5g Diameter:18mm

**1**





**1206** Armenian Coins AE, 11th - 13th Centuries. Reference:  
Condition: Very FineWeight: 2.3g Diameter:14.5mm

**1**



**1207** Armenian Coins AE, 11th - 13th Centuries. Reference:  
Condition: Very FineWeight: 0.8g Diameter:11.5mm

**1**



**1208** Armenian Coins AE, 11th - 13th Centuries. Reference:  
Condition: Very FineWeight: 7.5g Diameter:28.5mm

**1**



**1209** Armenian Coins AE, 11th - 13th Centuries. Reference:  
Condition: Very FineWeight: 1.9g Diameter:19mm

**1**



**1210** Armenian Coins AE, 11th - 13th Centuries. Reference:  
Condition: Very FineWeight: 6.7g Diameter:28.2mm

**1**



**1211** Armenian Coins AE, 11th - 13th Centuries. Reference:  
Condition: Very FineWeight: 3.4g Diameter:20.6mm

**1**



**1212** Armenian Coins AE, 11th - 13th Centuries. Reference:  
Condition: Very FineWeight: 1.8g Diameter:19.5mm

**1**



**1213** Armenian Coins AE, 11th - 13th Centuries. Reference:  
Condition: Very Fine Weight: 2.1g Diameter: 17.8mm

**1**



**1214** Arab - Byzantine Coins AE, 7th - 9th Centuries. Reference:  
Condition: Very Fine Weight: 2.5g Diameter: 16.8mm

**1**



**1215** Arab - Byzantine Coins AE, 7th - 9th Centuries. Reference:  
Condition: Very Fine Weight: 4.1g Diameter: 21.2mm

**1**



**1216** Arab - Byzantine Coins AE, 7th - 9th Centuries. Reference:  
Condition: Very Fine Weight: 4g Diameter: 24.7mm

**1**



**1217** Arab - Byzantine Coins AE, 7th - 9th Centuries. Reference:  
Condition: Very Fine Weight: 3.1g Diameter: 20.9mm

**1**



**1218** Arab - Byzantine Coins AE, 7th - 9th Centuries. Reference:  
Condition: Very Fine Weight: 3.4g Diameter: 32.3mm

**1**



**1219** Arab - Byzantine Coins AE, 7th - 9th Centuries. Reference:  
Condition: Very Fine Weight: 8.5g Diameter: 26mm

**1**



**1220** Arab - Byzantine Coins AE, 7th - 9th Centuries. Reference:  
Condition: Very FineWeight: 8.4g Diameter:24.3mm

**1**



**1221** Arab - Byzantine Coins AE, 7th - 9th Centuries. Reference:  
Condition: Very FineWeight: 7g Diameter:22mm

**1**



**1222** Arab - Byzantine Coins AE, 7th - 9th Centuries. Reference:  
Condition: Very FineWeight: 3.6g Diameter:21.3mm

**1**



**1223** Arab - Byzantine Coins AE, 7th - 9th Centuries. Reference:  
Condition: Very FineWeight: 4.4g Diameter:23.6mm

**1**



**1224** Arab - Byzantine Coins AE, 7th - 9th Centuries. Reference:  
Condition: Very FineWeight: 3.9 Diameter:21mm

**1**



**1225** Arab - Byzantine Coins AE, 7th - 9th Centuries. Reference:  
Condition: Very FineWeight: 5g Diameter:26.6mm

**1**



**1226** Arab - Byzantine Coins AE, 7th - 9th Centuries. Reference:  
Condition: Very FineWeight: 4.3g Diameter:23.2mm

**1**



**1227** Arab - Byzantine Coins AE, 7th - 9th Centuries. Reference:  
Condition: Very FineWeight: 5.2g Diameter:22.6mm

**1**



**1228** Arab - Byzantine Coins AE, 7th - 9th Centuries. Reference:  
Condition: Very FineWeight: 5.5g Diameter:23.1mm

**1**



**1229** Arab - Byzantine Coins AE, 7th - 9th Centuries. Reference:  
Condition: Very FineWeight: 6.4g Diameter:27.1mm

**1**



**1230** Arab - Byzantine Coins AE, 7th - 9th Centuries. Reference:  
Condition: Very FineWeight: 2.1g Diameter:21.5mm

**1**



**1231** Arab - Byzantine Coins AE, 7th - 9th Centuries. Reference:  
Condition: Very FineWeight: 2.6g Diameter:23.6mm

**1**



**1232** Arab - Byzantine Coins AE, 7th - 9th Centuries. Reference:  
Condition: Very FineWeight: 4.5g Diameter:24.6mm

**1**



**1233** Arab - Byzantine Coins AE, 7th - 9th Centuries. Reference:  
Condition: Very FineWeight: 4.7g Diameter:22.3mm

**1**





**1234** Arab - Byzantine Coins AE, 7th - 9th Centuries. Reference:  
Condition: Very FineWeight: 6.7g Diameter:30.5mm

**1**



**1235** Arab - Byzantine Coins AE, 7th - 9th Centuries. Reference:  
Condition: Very FineWeight: 5.4g Diameter:26.2mm

**1**



**1236** Arab - Byzantine Coins AE, 7th - 9th Centuries. Reference:  
Condition: Very FineWeight: 5.8g Diameter:25.3mm

**1**



**1237** Arab - Byzantine Coins AE, 7th - 9th Centuries. Reference:  
Condition: Very FineWeight: 2.9g Diameter:21.2mm

**1**



**1238** Arab - Byzantine Coins AE, 7th - 9th Centuries. Reference:  
Condition: Very FineWeight: 3.7g Diameter:20.3mm

**1**



**1239** Arab - Byzantine Coins AE, 7th - 9th Centuries. Reference:  
Condition: Very FineWeight: 2.3g Diameter:19.6mm

**1**



**1240** Arab - Byzantine Coins AE, 7th - 9th Centuries. Reference:  
Condition: Very FineWeight: 3.3g Diameter:22.4mm

**1**





**1241** Arab - Byzantine Coins AE, 7th - 9th Centuries. Reference:  
Condition: Very FineWeight: 4.8g Diameter:30.6mm

**1**



**1242** Arab - Byzantine Coins AE, 7th - 9th Centuries. Reference:  
Condition: Very FineWeight: 3.5g Diameter:20.5mm

**1**



**1243** Arab - Byzantine Coins AE, 7th - 9th Centuries. Reference:  
Condition: Very FineWeight: 3.8g Diameter:22.3mm

**1**



**1244** Arab - Byzantine Coins AE, 7th - 9th Centuries. Reference:  
Condition: Very FineWeight: 5.7g Diameter:30mm

**1**



**1245** Arab - Byzantine Coins AE, 7th - 9th Centuries. Reference:  
Condition: Very FineWeight: 3.2g Diameter:20.4mm

**1**



**1246** Arab - Byzantine Coins AE, 7th - 9th Centuries. Reference:  
Condition: Very FineWeight: 7g Diameter:25.1mm

**1**



**1247** Arab - Byzantine Coins AE, 7th - 9th Centuries. Reference:  
Condition: Very FineWeight: 2.2g Diameter:20.1mm

**1**



**1248** Arab - Byzantine Coins AE, 7th - 9th Centuries. Reference:  
Condition: Very FineWeight: 2.8g Diameter:20mm

**1**



**1249** Arab - Byzantine Coins AE, 7th - 9th Centuries. Reference:  
Condition: Very FineWeight: 3.4g Diameter:24mm

**1**



**1250** Arab - Byzantine Coins AE, 7th - 9th Centuries. Reference:  
Condition: Very FineWeight: 4.5g Diameter:25.5mm

**1**



**1251** Arab - Byzantine Coins AE, 7th - 9th Centuries. Reference:  
Condition: Very FineWeight: 3.3g Diameter:23.1mm

**1**



**1252** Arab - Byzantine Coins AE, 7th - 9th Centuries. Reference:  
Condition: Very FineWeight: 4.3g Diameter:22.7mm

**1**



**1253** Arab - Byzantine Coins AE, 7th - 9th Centuries. Reference:  
Condition: Very FineWeight: 4.3g Diameter:24.4mm

**1**



**1254** Arab - Byzantine Coins AE, 7th - 9th Centuries. Reference:  
Condition: Very FineWeight: 2.7g Diameter:21.1mm

**1**



**1255** Arab - Byzantine Coins AE, 7th - 9th Centuries. Reference:  
Condition: Very FineWeight: 4.1g Diameter:22.4mm

**1**



**1256** Arab - Byzantine Coins AE, 7th - 9th Centuries. Reference:  
Condition: Very FineWeight: 4.3g Diameter:22.4mm

**1**



**1257** Arab - Byzantine Coins AE, 7th - 9th Centuries. Reference:  
Condition: Very FineWeight: 4.2g Diameter:23.3mm

**1**



**1258** Arab - Byzantine Coins AE, 7th - 9th Centuries. Reference:  
Condition: Very FineWeight: 2.4g Diameter:21.2mm

**1**



**1259** Islamic Coins AE, 7th - 15th Centuries. Reference:  
Condition: Very FineWeight: 4.6g Diameter:20.5mm

**1**



**1260** Islamic Coins AE, 7th - 15th Centuries. Reference:  
Condition: Very FineWeight: 3.6g Diameter:20.5mm

**1**



**1261** Islamic Coins AE, 7th - 15th Centuries. Reference:  
Condition: Very FineWeight: 4.5g Diameter:20mm

**1**



**1262** Islamic Coins AE, 7th - 15th Centuries. Reference:  
Condition: Very FineWeight: 9.7g Diameter:27.8mm

**1**



**1263** Islamic Coins AE, 7th - 15th Centuries. Reference:  
Condition: Very FineWeight: 11.7g Diameter:31.5mm

**1**



**1264** Islamic Coins AE, 7th - 15th Centuries. Reference:  
Condition: Very FineWeight: 2.7g Diameter:21mm

**1**



**1265** Islamic Coins AE, 7th - 15th Centuries. Reference:  
Condition: Very FineWeight: 1.1g Diameter:18.4mm

**1**



**1266** Islamic Coins AE, 7th - 15th Centuries. Reference:  
Condition: Very FineWeight: 5.3g Diameter:24.6mm

**1**



**1267** Islamic Coins AE, 7th - 15th Centuries. Reference:  
Condition: Very FineWeight: 5.6g Diameter:22.8mm

**1**



**1268** Islamic Coins AE, 7th - 15th Centuries. Reference:  
Condition: Very FineWeight: 5.2g Diameter:23mm

**1**



**1269** Islamic Coins Ar, 7th - 15th Centuries. Reference:  
Condition: Very FineWeight: 1.6g Diameter:17mm

**1**





**1270** Islamic Coins Ar, 7th - 15th Centuries. Reference:  
Condition: Very FineWeight: 3g Diameter:22m.2m

**1**



**1271** Islamic Coins Ar, 7th - 15th Centuries. Reference:  
Condition: Very FineWeight: 3g Diameter:22mm

**1**



**1272** Islamic Coins Ar, 7th - 15th Centuries. Reference:  
Condition: Very FineWeight: 2.9g Diameter:21.5mm

**1**



**1273** Islamic Coins Ar, 7th - 15th Centuries. Reference:  
Condition: Very FineWeight: 2.9g Diameter:21.6mm

**1**



**1274** Islamic Coins Ar, 7th - 15th Centuries. Reference:  
Condition: Very FineWeight: 2.9g Diameter:23.3mm

**1**



**1275** Islamic Coins Ar, 7th - 15th Centuries. Reference:  
Condition: Very FineWeight: 3g Diameter:23.3mm

**1**



**1276** Islamic Coins Ar, 7th - 15th Centuries. Reference:  
Condition: Very FineWeight: 2.9g Diameter:24.2mm

**1**





**1277** Islamic Coins Ar, 7th - 15th Centuries. Reference:  
Condition: Very FineWeight: 3g Diameter:22.6mm

**1**



**1278** Islamic Coins Ar, 7th - 15th Centuries. Reference:  
Condition: Very FineWeight: 1.1g Diameter:15.5mm

**1**



**1279** Islamic Coins Ar, 7th - 15th Centuries. Reference:  
Condition: Very FineWeight: 1.8g Diameter:16mm

**1**



**1280** Islamic Coins Ar, 7th - 15th Centuries. Reference:  
Condition: Very FineWeight: 1.6g Diameter:18.6mm

**1**



**1281** Islamic Coins Ar, 7th - 15th Centuries. Reference:  
Condition: Very FineWeight: 1.7g Diameter:19.1mm

**1**



**1282** Islamic Coins Ar, 7th - 15th Centuries. Reference:  
Condition: Very FineWeight: 1.6g Diameter:19.8mm

**1**



**1283** Islamic Coins Ar, 7th - 15th Centuries. Reference:  
Condition: Very FineWeight: 2.5g Diameter:20mm

**1**



**1284** Islamic Coins Ar, 7th - 15th Centuries. Reference:  
Condition: Very Fine Weight: 2.9g Diameter: 26.2mm

**1**



**1285** Islamic Coins Ar, 7th - 15th Centuries. Reference:  
Condition: Very Fine Weight: 2.9g Diameter: 25.6mm

**1**



**1286** Islamic Coins Ar, 7th - 15th Centuries. Reference:  
Condition: Very Fine Weight: 2.9g Diameter: 29.4mm

**1**



**1287** Islamic Coins Ar, 7th - 15th Centuries. Reference:  
Condition: Very Fine Weight: 2.8g Diameter: 28.8mm

**1**



**1288** Islamic Coins Ar, 7th - 15th Centuries. Reference:  
Condition: Very Fine Weight: 2.4g Diameter: 26mm

**1**



**1289** Islamic Coins Ar, 7th - 15th Centuries. Reference:  
Condition: Very Fine Weight: 2.8g Diameter: 25.2mm

**1**



**1290** Islamic Coins Ar, 7th - 15th Centuries. Reference:  
Condition: Very Fine Weight: 2.9g Diameter: 29mm

**1**



**1291** Islamic Coins Ar, 7th - 15th Centuries. Reference:  
Condition: Very FineWeight: 2.9g Diameter:25.2mm

**1**



**1292** Islamic Coins Ar, 7th - 15th Centuries. Reference:  
Condition: Very FineWeight: 2.9g Diameter:26mm

**1**



**1293** Islamic Coins Ar, 7th - 15th Centuries. Reference:  
Condition: Very FineWeight: 2.8g Diameter:28.2mm

**1**



**1294** Islamic Coins Ar, 7th - 15th Centuries. Reference:  
Condition: Very FineWeight: 2.7g Diameter:23mm

**1**



**1295** Islamic Coins Ar, 7th - 15th Centuries. Reference:  
Condition: Very FineWeight: 2.9g Diameter:29.4mm

**1**



**1296** Islamic Coins AE, 7th - 15th Centuries. Reference:  
Condition: Very FineWeight: 5.1g Diameter:27.8mm

**1**



**1297** Islamic Coins AE, 7th - 15th Centuries. Reference:  
Condition: Very FineWeight: 4.6g Diameter:26.6mm

**1**



**1298** Islamic Coins AE, 7th - 15th Centuries. Reference:  
Condition: Very FineWeight: 2.5g Diameter:21.1mm

**1**



**1299** Islamic Coins AE, 7th - 15th Centuries. Reference:  
Condition: Very FineWeight: 2.5g Diameter:22mm

**1**



**1300** Lot of 5 Roman Provincial Coins AE, 1st - 5th Centuries.  
Reference: Condition: Very FineWeight: Diameter:

**1**



**1301** Lot of 5 Roman Provincial Coins AE, 1st - 5th Centuries.  
Reference: Condition: Very FineWeight: Diameter:

**1**



**1302** Lot of 5 Roman Provincial Coins AE, 1st - 5th Centuries.  
Reference: Condition: Very FineWeight: Diameter:

**1**



**1303** Lot of 5 Roman Provincial Coins AE, 1st - 5th Centuries.  
Reference: Condition: Very FineWeight: Diameter:

**1**



**1304** Lot of 5 Roman Provincial Coins AE, 1st - 5th Centuries.  
Reference: Condition: Very FineWeight: Diameter:

**1**





**1305** Lot of 5 Roman Provincial Coins AE, 1st - 5th Centuries.  
Reference: Condition: Very FineWeight: Diameter:

**1**



**1306** Lot of 5 Roman Provincial Coins AE, 1st - 5th Centuries.  
Reference: Condition: Very FineWeight: Diameter:

**1**



**1307** Lot of 5 Roman Provincial Coins AE, 1st - 5th Centuries.  
Reference: Condition: Very FineWeight: Diameter:

**1**



**1308** Lot of 5 Roman Provincial Coins AE, 1st - 5th Centuries.  
Reference: Condition: Very FineWeight: Diameter:

**1**



**1309** Lot of 5 Roman Provincial Coins AE, 1st - 5th Centuries.  
Reference: Condition: Very FineWeight: Diameter:

**1**



**1310** Lot of 5 Roman Provincial Coins AE, 1st - 5th Centuries.  
Reference: Condition: Very FineWeight: Diameter:

**1**



**1311** Lot of 10 Arab - Byzantine Coins AE, 7th - 8th Centuries.  
Reference: Condition: Very FineWeight: Diameter:

**1**



**1312** Lot of 10 Arab - Byzantine Coins AE, 7th - 8th Centuries.  
Reference: Condition: Very FineWeight: Diameter:

**1**



**1313** Lot of 10 Arab - Byzantine Coins AE, 7th - 8th Centuries.  
Reference: Condition: Very FineWeight: Diameter:

**1**



**1314** Lot of 10 Arab - Byzantine Coins AE, 7th - 8th Centuries.  
Reference: Condition: Very FineWeight: Diameter:

**1**



**1315** Lot of 10 Arab - Byzantine Coins AE, 7th - 8th Centuries.  
Reference: Condition: Very FineWeight: Diameter:

**1**



**1316** Lot of 10 Arab - Byzantine Coins AE, 7th - 8th Centuries.  
Reference: Condition: Very FineWeight: Diameter:

**1**



**1317** Lot of 10 Arab - Byzantine Coins AE, 7th - 8th Centuries.  
Reference: Condition: Very FineWeight: Diameter:

**1**



**1318** Lot of 10 Arab - Byzantine Coins AE, 7th - 8th Centuries.  
Reference: Condition: Very FineWeight: Diameter:

**1**



**1319** Lot of 10 Arab - Byzantine Coins AE, 7th - 8th Centuries.  
Reference: Condition: Very FineWeight: Diameter:

**1**



**1320** Lot of 10 Arab - Byzantine Coins AE, 7th - 8th Centuries.  
Reference: Condition: Very FineWeight: Diameter:

**1**



**1321** Lot of 10 Arab - Byzantine Coins AE, 7th - 8th Centuries.  
Reference: Condition: Very FineWeight: Diameter:

**1**



**1322** Lot of 10 Arab - Byzantine Coins AE, 7th - 8th Centuries.  
Reference: Condition: Very FineWeight: Diameter:

**1**



**1323** Lot of 10 Arab - Byzantine Coins AE, 7th - 8th Centuries.  
Reference: Condition: Very FineWeight: Diameter:

**1**



**1324** Lot of 10 Arab - Byzantine Coins AE, 7th - 8th Centuries.  
Reference: Condition: Very FineWeight: Diameter:

**1**



**1325** Lot of 10 Arab - Byzantine Coins AE, 7th - 8th Centuries.  
Reference: Condition: Very FineWeight: Diameter:

**1**



**1326** Lot of 10 Arab - Byzantine Coins AE, 7th - 8th Centuries.  
Reference: Condition: Very FineWeight: Diameter:

**1**



**1327** Lot of 10 Arab - Byzantine Coins AE, 7th - 8th Centuries.  
Reference: Condition: Very FineWeight: Diameter:

**1**





**1328** Lot of 10 Arab - Byzantine Coins AE, 7th - 8th Centuries.  
Reference: Condition: Very FineWeight: Diameter:

**1**



**1329** Lot of 10 Arab - Byzantine Coins AE, 7th - 8th Centuries.  
Reference: Condition: Very FineWeight: Diameter:

**1**



**1330** Lot of 10 Arab - Byzantine Coins AE, 7th - 8th Centuries.  
Reference: Condition: Very FineWeight: Diameter:

**1**



**1331** Lot of 10 Arab - Byzantine Coins AE, 7th - 8th Centuries.  
Reference: Condition: Very FineWeight: Diameter:

**1**



**1332** Lot of 10 Arab - Byzantine Coins AE, 7th - 8th Centuries.  
Reference: Condition: Very FineWeight: Diameter:

**1**



**1333** Lot of 10 Arab - Byzantine Coins AE, 7th - 8th Centuries.  
Reference: Condition: Very FineWeight: Diameter:

**1**



**1334** Lot of 10 Arab - Byzantine Coins AE, 7th - 8th Centuries.  
Reference: Condition: Very FineWeight: Diameter:

**1**



**1335** Lot of 10 Arab - Byzantine Coins AE, 7th - 8th Centuries.  
Reference: Condition: Very FineWeight: Diameter:

**1**



**1336** Lot of 10 Arab - Byzantine Coins AE, 7th - 8th Centuries.  
Reference: Condition: Very FineWeight: Diameter:

**1**



**1337** Lot of 10 Arab - Byzantine Coins AE, 7th - 8th Centuries.  
Reference: Condition: Very FineWeight: Diameter:

**1**



**1338** Lot of 10 Arab - Byzantine Coins AE, 7th - 8th Centuries.  
Reference: Condition: Very FineWeight: Diameter:

**1**



**1339** Lot of 10 Arab - Byzantine Coins AE, 7th - 8th Centuries.  
Reference: Condition: Very FineWeight: Diameter:

**1**



**1340** Lot of 10 Arab - Byzantine Coins AE, 7th - 8th Centuries.  
Reference: Condition: Very FineWeight: Diameter:

**1**



**1341** Lot of 10 Arab - Byzantine Coins AE, 7th - 8th Centuries.  
Reference: Condition: Very FineWeight: Diameter:

**1**



**1342** Lot of 10 Arab - Byzantine Coins AE, 7th - 8th Centuries.  
Reference: Condition: Very FineWeight: Diameter:

**1**



**1343** Lot of 10 Arab - Byzantine Coins AE, 7th - 8th Centuries.  
Reference: Condition: Very FineWeight: Diameter:

**1**



**1344** Lot of 10 Arab - Byzantine Coins AE, 7th - 8th Centuries.  
Reference: Condition: Very FineWeight: Diameter:

**1**



**1345** Lot of 10 Arab - Byzantine Coins AE, 7th - 8th Centuries.  
Reference: Condition: Very FineWeight: Diameter:

**1**



**1346** Lot of 10 Arab - Byzantine Coins AE, 7th - 8th Centuries.  
Reference: Condition: Very FineWeight: Diameter:

**1**



**1347** Lot of 10 Arab - Byzantine Coins AE, 7th - 8th Centuries.  
Reference: Condition: Very FineWeight: Diameter:

**1**



**1348** Lot of 10 Arab - Byzantine Coins AE, 7th - 8th Centuries.  
Reference: Condition: Very FineWeight: Diameter:

**1**



**1349** Lot of 10 Arab - Byzantine Coins AE, 7th - 8th Centuries.  
Reference: Condition: Very FineWeight: Diameter:

**1**



**1350** Lot of 10 Arab - Byzantine Coins AE, 7th - 8th Centuries.  
Reference: Condition: Very FineWeight: Diameter:

**1**



**1351** Lot of 10 Arab - Byzantine Coins AE, 7th - 8th Centuries.  
Reference: Condition: Very FineWeight: Diameter:

**1**



**1352** Lot of 10 Arab - Byzantine Coins AE, 7th - 8th Centuries.  
Reference: Condition: Very FineWeight: Diameter:

**1**





**1353** Lot of 10 Arab - Byzantine Coins AE, 7th - 8th Centuries.  
Reference: Condition: Very FineWeight: Diameter:

**1**



**1354** Lot of 10 Arab - Byzantine Coins AE, 7th - 8th Centuries.  
Reference: Condition: Very FineWeight: Diameter:

**1**



**1355** Lot of 10 Arab - Byzantine Coins AE, 7th - 8th Centuries.  
Reference: Condition: Very FineWeight: Diameter:

**1**



**1356** Lot of 10 Arab - Byzantine Coins AE, 7th - 8th Centuries.  
Reference: Condition: Very FineWeight: Diameter:

**1**



**1357** Lot of 10 Arab - Byzantine Coins AE, 7th - 8th Centuries.  
Reference: Condition: Very FineWeight: Diameter:

**1**



**1358** Lot of 10 Arab - Byzantine Coins AE, 7th - 8th Centuries.  
Reference: Condition: Very FineWeight: Diameter:

**1**



**1359** Lot of 10 Arab - Byzantine Coins AE, 7th - 8th Centuries.  
Reference: Condition: Very FineWeight: Diameter:

**1**



**1360** Lot of 10 Arab - Byzantine Coins AE, 7th - 8th Centuries.  
Reference: Condition: Very FineWeight: Diameter:

**1**



**1361** Lot of 10 Arab - Byzantine Coins AE, 7th - 8th Centuries.  
Reference: Condition: Very FineWeight: Diameter:

**1**



**1362** Lot of 10 Arab - Byzantine Coins AE, 7th - 8th Centuries.  
Reference: Condition: Very FineWeight: Diameter:

**1**



**1363** Lot of 10 Arab - Byzantine Coins AE, 7th - 8th Centuries.  
Reference: Condition: Very FineWeight: Diameter:

**1**



**1364** Lot of 10 Arab - Byzantine Coins AE, 7th - 8th Centuries.  
Reference: Condition: Very FineWeight: Diameter:

**1**



**1365** Lot of 10 Arab - Byzantine Coins AE, 7th - 8th Centuries.  
Reference: Condition: Very FineWeight: Diameter:

**1**



**1366** Lot of 10 Arab - Byzantine Coins AE, 7th - 8th Centuries.  
Reference: Condition: Very FineWeight: Diameter:

**1**



**1367** Lot of 10 Roman Imperial Coins, 1st - 4th Century AD.  
Reference: Condition: Very FineWeight: Diameter:

**1**



**1368** Lot of 10 Roman Imperial Coins, 1st - 4th Century AD.  
Reference: Condition: Very FineWeight: Diameter:

**1**



**1369** Lot of 10 Roman Imperial Coins, 1st - 4th Century AD.  
Reference: Condition: Very FineWeight: Diameter:

**1**



**1370** Lot of 10 Roman Imperial Coins, 1st - 4th Century AD.  
Reference: Condition: Very FineWeight: Diameter:

**1**



**1371** Lot of 10 Roman Imperial Coins, 1st - 4th Century AD.  
Reference: Condition: Very FineWeight: Diameter:

**1**



**1372** Lot of 10 Roman Imperial Coins, 1st - 4th Century AD.  
Reference: Condition: Very FineWeight: Diameter:

**1**



**1373** Lot of 10 Roman Imperial Coins, 1st - 4th Century AD.  
Reference: Condition: Very FineWeight: Diameter:

**1**



**1374** Lot of 10 Roman Imperial Coins, 1st - 4th Century AD.  
Reference: Condition: Very FineWeight: Diameter:

**1**



**1375** Lot of 10 Roman Imperial Coins, 1st - 4th Century AD.  
Reference: Condition: Very FineWeight: Diameter:

**1**



**1376** Lot of 10 Roman Imperial Coins, 1st - 4th Century AD.  
Reference: Condition: Very FineWeight: Diameter:

**1**



**1377** Lot of 10 Roman Imperial Coins, 1st - 4th Century AD.  
Reference: Condition: Very FineWeight: Diameter:

**1**





**1378** Lot of 10 Roman Imperial Coins, 1st - 4th Century AD.  
Reference: Condition: Very FineWeight: Diameter:

**1**



**1379** Lot of 10 Roman Imperial Coins, 1st - 4th Century AD.  
Reference: Condition: Very FineWeight: Diameter:

**1**



**1380** Lot of 10 Roman Imperial Coins, 1st - 4th Century AD.  
Reference: Condition: Very FineWeight: Diameter:

**1**



**1381** Lot of 10 Roman Imperial Coins, 1st - 4th Century AD.  
Reference: Condition: Very FineWeight: Diameter:

**1**



**1382** Lot of 10 Roman Imperial Coins, 1st - 4th Century AD.  
Reference: Condition: Very FineWeight: Diameter:

**1**



**1383** Lot of 10 Roman Imperial Coins, 1st - 4th Century AD.  
Reference: Condition: Very FineWeight: Diameter:

**1**



**1384** Lot of 10 Roman Imperial Coins, 1st - 4th Century AD.  
Reference: Condition: Very FineWeight: Diameter:

**1**



**1385** Lot of 10 Roman Imperial Coins, 1st - 4th Century AD.  
Reference: Condition: Very FineWeight: Diameter:

**1**



**1386** Lot of 10 Roman Imperial Coins, 1st - 4th Century AD.  
Reference: Condition: Very FineWeight: Diameter:

**1**



**1387** Lot of 10 Roman Imperial Coins, 1st - 4th Century AD.  
Reference: Condition: Very FineWeight: Diameter:

**1**



**1388** Lot of 10 Roman Imperial Coins, 1st - 4th Century AD.  
Reference: Condition: Very FineWeight: Diameter:

**1**



**1389** Lot of 10 Roman Imperial Coins, 1st - 4th Century AD.  
Reference: Condition: Very FineWeight: Diameter:

**1**



**1390** Lot of 10 Roman Imperial Coins, 1st - 4th Century AD.  
Reference: Condition: Very FineWeight: Diameter:

**1**



**1391** Lot of 10 Roman Imperial Coins, 1st - 4th Century AD.  
Reference: Condition: Very FineWeight: Diameter:

**1**



**1392** Lot of 10 Roman Imperial Coins, 1st - 4th Century AD.  
Reference: Condition: Very FineWeight: Diameter:

**1**



**1393** Lot of 10 Roman Imperial Coins, 1st - 4th Century AD.  
Reference: Condition: Very FineWeight: Diameter:

**1**



**1394** Lot of 10 Roman Imperial Coins, 1st - 4th Century AD.  
Reference: Condition: Very FineWeight: Diameter:

**1**



**1395** Lot of 10 Roman Imperial Coins, 1st - 4th Century AD.  
Reference: Condition: Very FineWeight: Diameter:

**1**



**1396** Lot of 10 Roman Imperial Coins, 1st - 4th Century AD.  
Reference: Condition: Very FineWeight: Diameter:

**1**



**1397** Lot of 10 Roman Imperial Coins, 1st - 4th Century AD.  
Reference: Condition: Very FineWeight: Diameter:

**1**



**1398** Lot of 10 Roman Imperial Coins, 1st - 4th Century AD.  
Reference: Condition: Very FineWeight: Diameter:

**1**



**1399** Lot of 10 Roman Imperial Coins, 1st - 4th Century AD.  
Reference: Condition: Very FineWeight: Diameter:

**1**



**1400** Lot of 10 Roman Imperial Coins, 1st - 4th Century AD.  
Reference: Condition: Very FineWeight: Diameter:

**1**



**1401** Lot of 10 Roman Imperial Coins, 1st - 4th Century AD.  
Reference: Condition: Very FineWeight: Diameter:

**1**



**1402** Roman Glass Reference: Condition: Very FineWeight: Diameter:

**1**





**1403** Roman Glass Reference: Condition: Very FineWeight:  
Diameter:

**1**



**1404** Roman Glass Reference: Condition: Very FineWeight:  
Diameter:

**1**



**1405** Roman Glass Reference: Condition: Very FineWeight:  
Diameter:

**1**



**1406** Roman Glass Reference: Condition: Very FineWeight:  
Diameter:

**1**



**1407** Roman Glass Reference: Condition: Very FineWeight:  
Diameter:

**1**



**1408** Roman Glass Reference: Condition: Very FineWeight:  
Diameter:

**1**



**1409** Roman Glass Reference: Condition: Very FineWeight:  
Diameter:

**1**



**1410** Roman Glass Reference: Condition: Very FineWeight:  
Diameter:

**1**



**1411** Roman Glass Reference: Condition: Very FineWeight:  
Diameter:

**1**



**1412** Roman Glass Reference: Condition: Very FineWeight:  
Diameter:

**1**



**1413** Roman Glass Reference: Condition: Very FineWeight:  
Diameter:

**1**



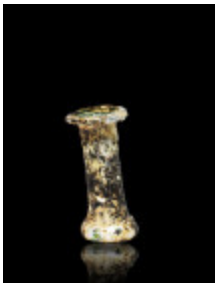
**1414** Roman Glass Reference: Condition: Very FineWeight:  
Diameter:

**1**



**1415** Roman Glass Reference: Condition: Very FineWeight:  
Diameter:

**1**



**1416** Roman Glass Reference: Condition: Very FineWeight:  
Diameter:

**1**



**1417** Roman Glass Reference: Condition: Very FineWeight:  
Diameter:

**1**



**1418** Roman Glass Reference: Condition: Very FineWeight:  
Diameter:

**1**



**1419** Roman Glass Reference: Condition: Very FineWeight:  
Diameter:

**1**



**1420** Roman Glass Reference: Condition: Very FineWeight:  
Diameter:

**1**



**1421** Roman Glass Reference: Condition: Very FineWeight:  
Diameter:

**1**



**1422** Roman Glass Reference: Condition: Very FineWeight:  
Diameter:

**1**



**1423** Roman Glass Reference: Condition: Very FineWeight:  
Diameter:

**1**



**1424** Roman Glass Reference: Condition: Very FineWeight:  
Diameter:

**1**



**1425** Roman Glass Reference: Condition: Very FineWeight:  
Diameter:

**1**



**1426** Roman Glass Reference: Condition: Very FineWeight:  
Diameter:

**1**



**1427** Roman Glass Reference: Condition: Very FineWeight:  
Diameter:

**1**





**1428** Roman Glass Reference: Condition: Very FineWeight:  
Diameter:

**1**



**1429** Roman Glass Reference: Condition: Very FineWeight:  
Diameter:

**1**



**1430** Roman Glass Reference: Condition: Very FineWeight:  
Diameter:

**1**



**1431** Roman Glass Reference: Condition: Very FineWeight:  
Diameter:

**1**



**1432** Roman Glass Reference: Condition: Very FineWeight:  
Diameter:

**1**



**1433** Roman Glass Reference: Condition: Very FineWeight:  
Diameter:

**1**



**1434** Roman Glass Reference: Condition: Very FineWeight:  
Diameter:

**1**



**1435** Roman Glass Reference: Condition: Very FineWeight:  
Diameter:

**1**



**1436** Roman Glass Reference: Condition: Very FineWeight:  
Diameter:

**1**



**1437** Roman Glass Reference: Condition: Very FineWeight:  
Diameter:

**1**



**1438** Roman Glass Reference: Condition: Very FineWeight:  
Diameter:

**1**



**1439** Roman Glass Reference: Condition: Very FineWeight:  
Diameter:

**1**



**1440** Roman Glass Reference: Condition: Very FineWeight:  
Diameter:

**1**



**1441** Roman Glass Reference: Condition: Very FineWeight:  
Diameter:

**1**



**1442** Roman Glass Reference: Condition: Very FineWeight:  
Diameter:

**1**



**1443** Roman Glass Reference: Condition: Very FineWeight:  
Diameter:

**1**



**1444** Roman Glass Reference: Condition: Very FineWeight:  
Diameter:

**1**



**1445** Roman Glass Reference: Condition: Very FineWeight:  
Diameter:

**1**



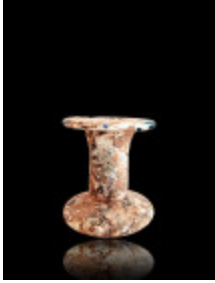
**1446** Roman Glass Reference: Condition: Very FineWeight:  
Diameter:

**1**



**1447** Roman Glass Reference: Condition: Very FineWeight:  
Diameter:

**1**



**1448** Roman Glass Reference: Condition: Very FineWeight:  
Diameter:

**1**



**1449** Roman Glass Reference: Condition: Very FineWeight:  
Diameter:

**1**



**1450** Roman Glass Reference: Condition: Very FineWeight:  
Diameter:

**1**



**1451** Roman Glass Reference: Condition: Very FineWeight:  
Diameter:

**1**



**1452** Roman Glass Reference: Condition: Very FineWeight:  
Diameter:

**1**





**1453** Roman Glass Reference: Condition: Very FineWeight:  
Diameter:

**1**



**1454** Roman Glass Reference: Condition: Very FineWeight:  
Diameter:

**1**



**1455** Roman Glass Reference: Condition: Very FineWeight:  
Diameter:

**1**



**1456** Roman Glass Reference: Condition: Very FineWeight:  
Diameter:

**1**



**1457** Roman Glass Reference: Condition: Very FineWeight:  
Diameter:

**1**



**1458** Roman Glass Reference: Condition: Very FineWeight:  
Diameter:

**1**



**1459** Roman Glass Reference: Condition: Very FineWeight:  
Diameter:

**1**



**1460** Roman Glass Reference: Condition: Very FineWeight:  
Diameter:

**1**



**1461** Roman Glass Reference: Condition: Very FineWeight:  
Diameter:

**1**



**1462** Roman Glass Reference: Condition: Very FineWeight:  
Diameter:

**1**



**1463** Roman Glass Reference: Condition: Very FineWeight:  
Diameter:

**1**



**1464** Roman Glass Reference: Condition: Very FineWeight:  
Diameter:

**1**



**1465** Roman Glass Reference: Condition: Very FineWeight:  
Diameter:

**1**



**1466** Roman Glass Reference: Condition: Very FineWeight:  
Diameter:

**1**



**1467** Roman Glass Reference: Condition: Very FineWeight:  
Diameter:

**1**



**1468** Roman Glass Reference: Condition: Very FineWeight:  
Diameter:

**1**



**1469** Roman Glass Reference: Condition: Very FineWeight:  
Diameter:

**1**



**1470** Roman Glass Reference: Condition: Very FineWeight:  
Diameter:

**1**



**1471** Roman Glass Reference: Condition: Very FineWeight:  
Diameter:

**1**



**1472** Roman Glass Reference: Condition: Very FineWeight:  
Diameter:

**1**



**1473** Roman Glass Reference: Condition: Very FineWeight:  
Diameter:

**1**



**1474** Roman Glass Reference: Condition: Very FineWeight:  
Diameter:

**1**



**1475** Roman Glass Reference: Condition: Very FineWeight:  
Diameter:

**1**



**1476** Roman Glass Reference: Condition: Very FineWeight:  
Diameter:

**1**



**1477** Roman Glass Reference: Condition: Very FineWeight:  
Diameter:

**1**





**1478** Roman Glass Reference: Condition: Very FineWeight:  
Diameter:

**1**



**1479** Roman Glass Reference: Condition: Very FineWeight:  
Diameter:

**1**