



Numisart

Auction 1

5 November 2023

All prices are starting prices (EUR)
PDF catalog created by www.biddr.com



1 A LARGE ROMAN BRONZE APPLIQUE WITH A FEMALE HEAD Circa 1st-2nd century AD. Applique in the form of a female head wearing stephane; the eyes and the central medallion of the stephane were originally inlaid, probably with glass. Small part of left cheek missing. H 65 mm Private property, acquired on the European art market.

250



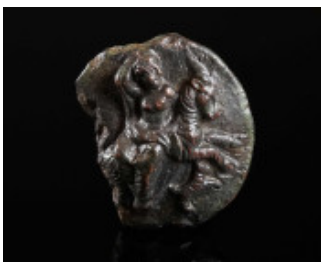
2 A FINE ROMAN BRONZE STATUETTE OF A STRIDING HORSE Circa 2nd-3rd century AD. The right foreleg raised, the head slightly turned and angled. Cast in one piece together with the profiled base. Attractive green patina. L 37 mm, H 52 mm Ex Austrian private collection; acquired on the European art market.

580



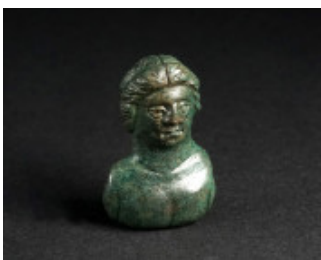
3 A ROMAN BRONZE ATTACHMENT WITH A BUST OF HERCULES Circa 1st-3rd century AD. Hercules is depicted with curly hair, a long curly beard, and bare chest. The sharp turn of the head to the left indicates that the bust follows the famous Hercules Farnese (now in Naples). Part of the bust not preserved. H 45 mm Ex private collection, acquired on the German art market.

50



4 A ROMAN BRONZE PLAQUE DEPICTING APHRODITE RIDING A GOAT Circa 1st-3rd century AD. A solid bronze plaque worked in high relief showing Aphrodite Epitragia semi-nude riding on a female goat; below a dog. The iconography goes back to the Classical Greek period. Probably a votive gift or a matrix for making sheet gold or silver votives. Left part missing. Diameter 34 mm Ex Austrian private collection; acquired on the European art market.

380



5 A ROMAN BRONZE APPLIQUE BUST OF A YOUTH Circa 2nd-3rd century AD. The hair parted in the centre; with bare chest. H 34 mm Ex private collection, acquired on the German art market.

50



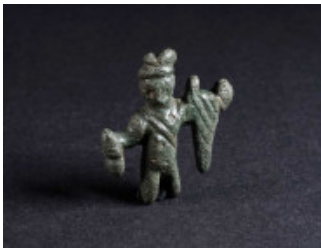
6 A ROMAN BRONZE APPLIQUE IN THE SHAPE OF A PANTHER Circa 2nd-3rd century AD. The applique worked in relief shows a leaping panther or lioness with its head turned back. At the back two studs/knobs for attachment. L 44 mm Ex Austrian private collection; acquired on the European art market.

120



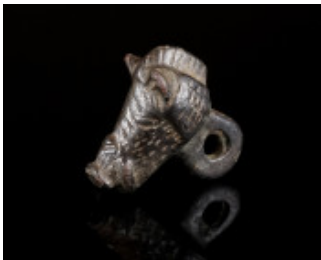
7 A ROMAN MINIATURE BRONZE STATUETTE OF A GOD Circa 2nd-3rd century AD. The small (ithyphallic) statuette with its conical base is cast in one piece. The object in the right hand could depict Mercury's money bag, but Mercury is not normally depicted with a beard. Possibly a syncretic god and probably a votive offering. H 34 mm Ex private collection, acquired on the German art market.

50



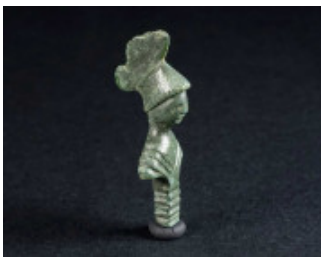
8 A ROMAN MINIATURE BRONZE STATUETTE OF MERCURY Circa 2nd-3rd century AD. Despite the small size, Mercury can be clearly identified by his winged cap, the stylised herald's staff (caduceus) and cloak in his left hand, and the money bag (marsupium) in his right. Probably a votive offering. H 30 mm Ex private collection, acquired on the German art market.

50



9 A ROMAN BRONZE BOAR'S HEAD WITH AN ATTACHMENT LOOP Circa 1st-3rd century AD. A finely worked, detailed small boar's head with an attachment loop at the back. Possibly some kind of loop fastener or 'Button' (?). L 25 mm Ex Austrian private collection; acquired on the European art market.

140



10 A SMALL ROMAN BRONZE BUST OF MARS OR MINERVA Circa 2nd-3rd century AD. Helmeted and draped/cuirassed bust worked in a stylised manner. H 40 mm Ex private collection, acquired on the German art market.

50



11 A ROMAN BRONZE ATTACHMENT DEPICTING A BEARDED GOD Circa 2nd-3rd century AD. Small, draped bust possibly showing Jupiter Sabazius. H 46 mm Ex private collection, acquired on the German art market.

50



12 TWO SMALL ROMAN LEAD STATUETTES DEPICTING GODDESSES Circa 2nd-3rd century AD. One set on a flat, the other on a profiled base; both draped, the larger holding a patera. H 41 mm (left), and H 36 mm (right) Ex private collection, acquired on the German art market.

80



13 A ROMAN DANUBIAN RIDER LEAD VOTIVE PLAQUE Circa 3rd-4th century AD. Rectangular Mystery Plaque with an arched aedicula/temple with two pillars. Above in the corners, two horned snakes/serpents. Within the aedicula (from top to bottom): Sol in a quadriga facing, his right hand raised, orb and whip in his left. Below, a facing goddess, flanked by two horsemen with their right hand raised, trampling on fish and prone man, respectively. Behind the horsemen, probably Mars and Nemesis(?). Centrally below, a feast scene with three figures seated behind a round table with a fish on a platter, to the right two further figures; to the left, a sacrifice scene with two figures and a tree. In the bottom register, a vase flanked by a lion and a snake, in the corners a tripod table and a rooster. Ertl Type B2, see: R. F. Ertl, *Donaureiter Bleivotivtafeln* (Petronell-Carnuntum 1996). Outer right side slightly damaged. H 93 mm, W 75 mm Acquired on the European art market.

200



14 A ROMAN DANUBIAN RIDER LEAD VOTIVE PLAQUE Circa 3rd-4th century AD. Rectangular 'Mystery Plaque' with twisted border and wavy top; circular central medallion. In the wavy top section, a fish flanked by stars. In the corners below, four busts (the four seasons or winds?). Within the medallion (from top to bottom): busts of Sol (left) and Luna (right), between them a female figure (Nemesis?), behind them a tripod table and a lion. In the main register, a facing goddess, flanked by two horsemen with their right hand raised, trampling on two prone men; behind them a further figure (left) and a bird and an eagle (right). At the bottom, a sacrifice scene and further implements. Ertl Type G2, see: R. F. Ertl, *Donaureiter Bleivotivtafeln* (Petronell-Carnuntum 1996). Slightly bent but intact. H 86 mm, W 73 mm Acquired on the European art market.

200



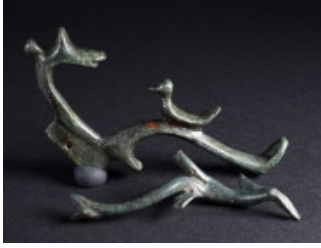
15 A ROMAN DANUBIAN RIDER LEAD VOTIVE PLAQUE Circa 3rd-4th century AD. Rectangular 'Mystery Plaque' with circular central medallion. In the corners surrounding the medallion, originally four busts (the four seasons or winds?). Within the medallion (from top to bottom): busts of Sol (left) and Luna (right), between them a female figure (Nemesis?), behind them a tripod table and a lion. In the main register, a facing goddess, flanked by two horsemen with their right hand raised, trampling on two prone men; behind them a further figure (left) and a bird and an eagle (right). At the bottom, a sacrifice scene and further implements. Ertl Type G2, see: R. F. Ertl, *Donaureiter Bleivotivtafeln* (Petronell-Carnuntum 1996). Damaged and slightly bent, with a well-preserved central medallion. H 80 mm, W 71 mm Acquired on the European art market.

200



16 TWO ROMAN BRONZE FIGURAL APPLIQUES Circa 2nd-3rd century AD. One in the shape of a lion's head, remains of an iron stud on the reverse; the other depicting the head of Attis with Phrygian cap, a bronze stud for attachment on the reverse. L 20 mm (lion), and H 21 mm (Attis) Ex private collection, acquired on the German art market.

50



17 A LEG FROM A BRONZE CANDELEBRUM, AND A FLORAL ORNAMENT Circa 5th-9th century, and 2nd-3rd century AD. The leg probably from a Byzantine-style candelabrum or stand, decorated with a bird and an animal head terminal; and a Roman bronze branch with leaves, probably part of a figural decoration. H 70 mm, and H 90 mm Ex private collection, acquired on the German art market.

50



18 A LATE AVAR BRONZE APPLIQUE WITH A BUST Circa 7th-8th century AD. Cast bronze; round applique with human bust left. Two holes for attachment. Diameter 22 mm Acquired on the European art market.

70



19 TWO ROMAN BRONZE FIGURAL ORNAMENTS Circa 2nd-3rd century AD. An applique in the shape of a dolphin; and the terminal from a cloth- or hairpin in the shape of a hand entwined by a snake, holding a bird. H 30 mm (hand with snake), and L 49 mm (dolphin) Ex private collection, acquired on the German art market.

50



20 TWO ROMAN ORNAMENTS IN THE SHAPE OF FLIES/CICADAS Circa 2nd-3rd century AD. One is a bronze applique with a stud for attachment on the reverse; the other either a small applique or the terminal from a cloth- or hairpin. Some deposits on the silver applique. L 26 mm, and L 12 mm Ex private collection, acquired on the German art market.

50



21 A LATE MEDIEVAL SILVER RING WITH ORNAMENTAL DECORATION Circa 15th century AD. With an octagonal bezel with engraved design. Ring size 55 (EU) Ex private collection, acquired on the German art market.

50



22 A BYZANTINE BRONZE RING WITH EAGLE AND LION Circa 6th-9th century AD. With an oval bezel engraved with a standing eagle and a prancing lion. Ring size 56 (EU) Ex private collection, acquired on the German art market.

50



23 A LATE MEDIEVAL OR EARLY MODERN SILVER RING Circa 15th-16th century AD. With an oval bezel with ornamental decoration. Ring size 58 (EU) Ex private collection, acquired on the German art market.

50



24 A BYZANTINE BRONZE RING WITH DECORATION Circa 9th-12th century AD. Ring with flat round bezel engraved with a blundered inscription. Ring size 57 (EU) Ex private collection, acquired on the German art market.

50



25 A LATE MEDIEVAL OR EARLY MODERN BRONZE RING Circa 15th-16th century AD. With an oval bezel with ornamental decoration. Ring size 56 (EU) Ex private collection, acquired on the German art market.

50



26 A MEDIEVAL SILVER RING WITH AN EAGLE Circa 9th-10th century AD. Oval bezel with an engraved eagle. Ring size 60 (EU) Ex private collection, acquired on the German art market.

50



27 A BYZANTINE BRONZE RING WITH TWO VICTORIES Circa 6th-9th century AD. With rectangular bezel depicting two highly stylised winged figures, between them a palm frond. Ring size 58 (EU) Ex private collection, acquired on the German art market.

50



28 A BYZANTINE BRONZE RING DEPICTING A BIRD Circa 12th-14th century AD. With an offset round bezel showing a bird with open wings. Ring size 56 (EU) Ex private collection, acquired on the German art market.

50



29 A ROMAN BRONZE RING WITH A CARNELIAN INTAGLIO Circa 2nd-3rd century AD. A delicate bronze ring with a round carnelian intaglio depicting a prancing horse with its head turned backwards. Hoop slightly bent. Rin size 42 (EU) Ex private collection, acquired on the German art market.

50



30 A GREEK BRONZE RING WITH EROS ON A LION Circa 3rd-1st century BC. With an oval bezel depicting Eros with a whip riding a lion advancing left. Ring size 48 (EU) Ex private collection, acquired on the German art market.

50



31 A DELICATE ROMAN BRONZE RING WITH A CARNELIAN INTAGLIO Circa 2nd-3rd century AD. The oval intaglio featuring clasped hands in a highly stylised manner. Ring size 40 (EU) Ex private collection, acquired on the German art market.

50



32 A BYZANTINE BRONZE RING WITH A BIRD Circa 6th-9th century AD. With an oval bezel depicting a stylised bird standing left. Ring size 56 (EU) Ex private collection, acquired on the German art market.

50



33 A MEDIEVAL BRONZE RING WITH ORNAMENTAL DESIGN Circa 12th-15th century AD. With a deeply engraved oval bezel. Ring size 56 (EU) Ex private collection, acquired on the German art market.

50



34 A LATE MEDIEVAL OR EARLY MODERN BRONZE RING Circa 15th-16th century AD. With a rectangular bezel with ornamental decoration and a central cross. Ring size 56 (EU) Ex private collection, acquired on the German art market.

50



35 A LATE ROMAN RING WITH AN EARLY CHRISTIAN MONOGRAM Circa 4th century AD. Ring with a rectangular bezel featuring an IX monogram formed by the Greek letters I (Iota) and X (Chi), standing for Iesous Christos (Ιησους Χριστος, Jesus Christ in Greek). Ring size 58 (EU) Ex private collection, acquired on the German art market.

50



36 LATE ANTIQUE/EARLY BYZANTINE BRONZE RING WITH A WARRIOR Circa 4th-6th century AD. Ring with offset shoulders and round, raised bezel depicting a highly stylised warrior with spear and shield. Ring size 49 (EU) Ex private collection, acquired on the German art market.

50



37 A MEDIEVAL SILVER RING WITH ORNAMENTAL DESIGN Circa 12th-13th century AD. Oval bezel with engraved design, hoop with overlapping ends. Ring size 51 (EU) Ex private collection, acquired on the German art market.

50



38 A LATE MEDIEVAL SILVER RING DEPICTING A BIRD Circa 15th century AD. Small ring with an octagonal bezel showing a bird within a frame. The hoop is soldered together at the bottom. Ring size 41 (EU) Ex private collection, acquired on the German art market.

50



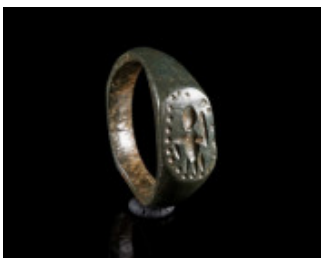
39 A ROMAN SILVER RING WITH A CARNELIAN INTAGLIO Circa 2nd-3rd century AD. The shoulders with incised and punched decoration; the oval intaglio showing a stylised standing figure. Hoop slightly bent with one break and a few cracks; some deposits. Ring size 49 (EU) Ex private collection, acquired on the German art market.

50



40 A ROMAN SILVER RING WITH A CARNELIAN INTAGLIO Circa 3rd century AD. With offset, faceted shoulders; the round intaglio depicting a female head left. Small part of one shoulder broken off; hoop with some cracks/breaks. Ring size 46 (EU) Ex private collection, acquired on the German art market.

50



41 A BYZANTINE BRONZE RING WITH A FIGURE Circa 6th-9th century AD. With a flattened oval bezel depicting a highly stylised human figure framed by a punched beaded border. Ring size 54 (EU) Ex private collection, acquired on the German art market.

50



42 A ROMAN SILVER RING WITH A HIPPOCAMPUS Circa 2nd-3rd century AD Small ring with a raised oval bezel depicting a Hippocampus (Seahorse) right. Ring size 41 (EU) Ex private collection, acquired on the German art market.

50



43 A BYZANTINE BRONZE RING WITH A WINGED CREATURE Circa 12th-14th century AD. The shoulders with incised decoration; round bezel with some kind of winged creature with four legs(?). Ring size 50 (EU) Ex private collection, acquired on the German art market.

50



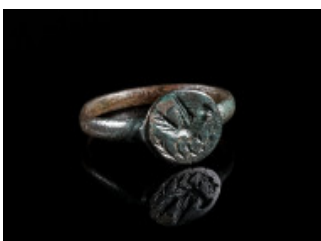
44 A ROMAN BRONZE RING DEPICTING THE GODDESS FORTUNA Circa 2nd-3rd century AD. Ring with offset oval bezel showing Fortuna right with cornucopia, rudder, and ears of grain (?). Ring size 47 (EU) Ex private collection, acquired on the German art market.

50



45 A ROMAN BRONZE RING DEPICTING THE GODDESS CERES Circa 2nd-3rd century AD. Ring with oval bezel showing Ceres with torch in her right hand and ears of grain in her left(?). Ring size 51 (EU) Ex private collection, acquired on the German art market.

50



46 LATE ANTIQUE/EARLY BYZANTINE BRONZE RING WITH A DOVE Circa 4th-6th century AD. With round bezel depicting a flying dove between two branches; remains of silvering on the bezel. Ring size 55 (EU) Ex private collection, acquired on the German art market.

50



47 A ROMAN BRONZE RING DEPICTING A STANDING GODDESS Circa 3rd century AD. Ring with offset shoulders and raised oval bezel showing a goddess with sceptre and a patera(?), possibly Juno. Ring size 42 (EU) Ex private collection, acquired on the German art market.

50



48 A BYZANTINE BRONZE RING WITH A LION Circa 6th-9th century AD. The oval bezel with a stylised lion striding left. Ring size 54 (EU) Ex private collection, acquired on the German art market.

50



49 A BYZANTINE BRONZE RING WITH A BIRD Circa 6th-9th century AD. The shoulders decorated with elaborate incised design; the rectangular, offset bezel depicting a bird flying right. Ring size 53 (EU) Ex private collection, acquired on the German art market.

50



50 A LATE ROMAN/EARLY BYZANTINE BRONZE RING WITH A WARRIOR Circa 4th-6th century AD. With an offset hexagonal bezel depicting a warrior or hunter advancing left with upraised arms and a spear. Ring size 53 (EU) Ex private collection, acquired on the German art market.

50



51 A MEDIEVAL BRONZE RING WITH A STANDING FIGURE Circa 12th-14th century AD. The shoulders decorated with a dotted design; the bezel features a highly stylised standing figure with a spear(?). Ring size 56 (EU) Ex private collection, acquired on the German art market.

50



52 A LATE ROMAN BRONZE RING WITH A MYTHOLOGICAL CREATURE Circa 4th century AD. Decorated ring with round bezel depicting a stylised mythical creature(?). Ring size 63 (EU) Ex private collection, acquired on the German art market.

50



53 A LATE ROMAN OR EARLY BYZANTINE BRONZE RING WITH A CRAB Circa 4th-6th century AD. With plain hoop and squarish bezel. Ring size 46 (EU) Ex private collection, acquired on the German art market.

50



54 A BYZANTINE BRONZE RING DEPICTING A BIRD ON A BRANCH Circa 12th-14th century AD. With an offset shield-shaped bezel showing a bird with open wings sitting left on branch. Ring size 42 (EU) Ex private collection, acquired on the German art market.

50



55 A GREEK BRONZE RING WITH A COCKEREL Circa 3rd-1st century BC. With an oval bezel depicting a cockerel with ears of corn(?). Ring size 51 (EU) Ex private collection, acquired on the German art market.

50



56 A LATE ROMAN BRONZE RING WITH A LION Circa 4th century AD. Ring with round bezel depicting a prancing lion(?). Ring size 63 (EU) Ex private collection, acquired on the German art market.

50



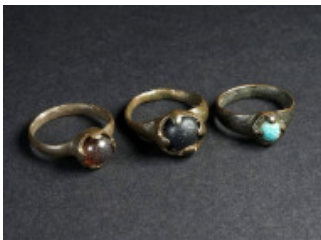
57 AN EARLY BYZANTINE BRONZE RING SHOWING AN ANGEL WITH CROSS Circa 6th-7th century AD. With an oval bezel depicting an angel advancing left with a long cross in his hand. Ring size 48 (EU) Ex private collection, acquired on the German art market.

50



58 A BYZANTINE BRONZE RING DEPICTING A HARE Circa 6th-9th century AD. The shoulders decorated with a dotted design; the bezel showing a stylised hare striding right. Ring size 55 (EU) Ex private collection, acquired on the German art market.

50



59 A GROUP OF THREE BYZANTINE BRONZE RINGS WITH GLASS STONES Circa 12th-14th century AD. With coloured cabochon glass stones in a claw setting. Ring sizes (left to right) 50, 50, and 46 (EU) Ex private collection, acquired on the German art market.

50



60 TWO ROMAN SILVER RINGS Circa 3rd century AD. One with an oval undecorated bezel, the other set with a carnelian intaglio depicting a leaf(?). Worn, with some scratches and cracks. Ring sizes (left to right) 55, and 43 (EU) Ex private collection, acquired on the German art market.

80



61 THREE LATE ROMAN/EARLY BYZANTINE SILVER RINGS Circa 4th-6th century AD. Two with a square bezel, one with an oval bezel; two decorated with a cross, one with undefinable design. Ring sizes (left to right) 53, 47, and 55 (EU) Ex private collection, acquired on the German art market.

90



62 A GROUP OF FIVE MEDIEVAL/EARLY MODERN BRONZE RINGS
Circa 12th-16th century AD. All with decorated bezel. Ring sizes
54-58 (EU) Ex private collection, acquired on the German art
market.

50



63 A GROUP OF FIVE MEDIEVAL/EARLY MODERN BRONZE RINGS
Circa 12th-16th century AD. Four with decorated bezel; one with
coloured cabochon glass stone in a claw setting. Ring sizes 46-60
(EU) Ex private collection, acquired on the German art market.

50



64 A GROUP OF FIVE MEDIEVAL/EARLY MODERN BRONZE RINGS
Circa 12th-16th century AD. Small rings; all with decorated bezel.
Ring sizes 36-46 (EU) Ex private collection, acquired on the
German art market.

50



65 A GROUP OF FIVE MEDIEVAL/EARLY MODERN BRONZE RINGS
Circa 12th-16th century AD. Small rings; all with decorated bezel.
Ring sizes 36-46 (EU) Ex private collection, acquired on the
German art market.

50



66 A GROUP OF FIVE MEDIEVAL/EARLY MODERN BRONZE RINGS
Circa 12th-16th century AD. Small rings; all with decorated bezel.
Ring sizes 35-44 (EU) Ex private collection, acquired on the
German art market.

50



67 A GROUP OF FIVE BYZANTINE/EARLY MODERN BRONZE RINGS Circa 9th-16th century AD. Small rings; all with decorated bezel. Ring sizes 38-47 (EU) Ex private collection, acquired on the German art market.

50



68 A GROUP OF FIVE MEDIEVAL/EARLY MODERN BRONZE RINGS Circa 12th-16th century AD. Small rings; all with decorated bezel. Ring sizes 38-44 (EU) Ex private collection, acquired on the German art market.

50



69 A ROMAN GOLD RING WITH BANDED AGATE Circa 1st-2nd century AD. Set with a three-layered agate. Ring size 36 (EU); 2.94 g Ex private collection, acquired on the German art market.

150



70 AN ELABORATE ROMAN GOLD OPENWORK EARRING Circa 1st-3rd century AD. The disc with a central glass(?) paste setting framed by an openwork design formed of twisted gold wire; below, a crossbar with originally three pendants (one missing). H 31mm (total); 1.91 g Ex Austrian private collection; acquired on the European art market.

220



71 A ROMAN CARNELIAN INTAGLIO DEPICTING A BUST OF APOLLO Circa 1st-3rd century AD. Attractive and skilfully carved oval intaglio showing a draped bust of the god Apollo left with bow and quiver on his back; minor iron deposits on the edges suggest that the gem was once set into an iron ring. H 11 mm Acquired on the UK art market.

300



72 A ROMAN JASPER INTAGLIO DEPICTING A WATER BASIN (LABRUM) Circa 1st-3rd century AD. Oval intaglio showing a water basin set on a foot in the shape of a dolphin; on top, a bird is depicted. Minor chip to one edge. H 12.5 mm Acquired on the UK art market.

250



73 A ROMAN NICOLO INTAGLIO WITH AN EAGLE Circa 1st-3rd century AD. Oval banded agate (black/blue) intaglio depicting an eagle with a wreath in its beak, sitting left on a thunderbolt. H 8 mm Acquired on the UK art market.

200



74 A ROMAN CARNELIAN INTAGLIO DEPICTING THE GODDESS ROMA Circa 1st-3rd century AD. Oval intaglio with the helmeted and draped goddess standing left, holding spear and shield with her right hand, and a small statuette of Victory (Victoriola) in her left. Worn surface, with a minor chip on the right edge and some earthy deposits. H 12 mm Acquired on the UK art market.

200



75 A FINE MEDITERRANEAN BLUE GLASS MALE DOUBLE-FACED PENDANT Circa late 4th-3rd century BC. A rod-wound and moulded (two-piece mould) pendant made of translucent dark deep blue glass with a bearded male head on either side. Loop missing; with some earthy deposits and iridisation. For an almost identical example see Maud Spaer, *Ancient Glass in the Israel Museum* (Jerusalem 2001), cat. nos. 323-324. H 20 mm Ex Austrian private collection; acquired on the European art market.

150



76 A BYZANTINE BRONZE RELIQUARY CROSS WITH CHRIST AND MARY Circa 10th-12th century AD. Reliquary cross (enkolpion) depicting the crucifixion on the front. Christ is wearing a loincloth, below and above him two busts; two heads underneath his outstretched arms. The reverse shows the Virgin Mary with her hands upraised in prayer ('orans'), flanked by four busts (probably the Evangelists). H 93 mm, W 38 mm Ex private collection, acquired on the German art market.

250



77 A BYZANTINE BRONZE RELIQUARY CROSS WITH CHRIST AND MARY Circa 9th-11th century AD. Large reliquary cross (enkolpion) depicting the crucifixion on the front. Above the head of Christ is an empty tabula ansata, on top sun and moon (?); below his feet two portraits in bust form. The reverse shows Virgin Mary with child (Maria Kyriotissa), flanked by four busts (probably the Evangelists). H 94 mm, W 51 mm Ex private collection, acquired on the German art market.

300



78 A BYZANTINE BRONZE RELIQUARY CROSS WITH CHRIST AND MARY Circa 10th-12th century AD. Reliquary cross (enkolpion) depicting the crucifixion on the front. Christ with outstretched arms is wearing a long robe, above him a cross; below his arms and his feet, three busts. The reverse shows the Virgin Mary with her hands upraised in prayer ('orans'), flanked by four busts (probably the Evangelists). Suspension loop missing; the two halves of the cross are loose. H 89 mm, W 44 mm Private property, acquired on the European art market.

500



79 A BYZANTINE BRONZE CROSS WITH MARY AND THE EVANGELISTS Circa 10th-12th century AD. One half of a reliquary cross (enkolpion) depicting Virgin Mary with her hands upraised in prayer ('orans'), flanked by the busts of the four Evangelists. To the sides of Mary (barred) MP - ΘV (Greek abbreviation: MHTHP ΘEOY - Mother of God). In the corners (clockwise): M (Mathew), I (John), M (Mark), and Λ (Luke). H 86 mm, W 54 mm Private property, acquired on the European art market.

275



80 A BYZANTINE BRONZE RELIQUARY CROSS WITH ST. JOHN Circa 10th-12th century AD. One half of a reliquary cross (enkolpion) depicting St. John, identified by the inscription O ΑΓΙΟC - ΙΩΑΝ(N)ΙC (Ο Άγιος Ιωάννης). H 80mm, W 46 mm Ex private collection, acquired on the German art market.

50



81 A BYZANTINE BRONZE RELIQUARY CROSS WITH VIRGIN MARY Circa 10th-12th century AD. One half of a reliquary cross (enkolpion) depicting Mary Theotokos, the 'God-Bearer', identified by the inscription ΘEO - Τ(O)ΚΕ (θεοτόκε in the vocative case). H 63 mm, W 35 mm Ex private collection, acquired on the German art market.

50



82 A BYZANTINE BRONZE RELIQUARY CROSS WITH A SAINT Circa 10th-12th century AD. One half of a reliquary cross (enkolpion) depicting a saint with his hands upraised in prayer ('orans'). H 66 mm, W 39 mm Ex private collection, acquired on the German art market.

50



83 A BYZANTINE BRONZE CROSS APPLIQUE WITH CHRIST CRUCIFIED Circa 9th-12th century AD. Cross decorated with a design of braided bands, depicting Christ in a stylised manner. H 45 mm Ex private collection, acquired on the German art market.

50



84 A DECORATED BYZANTINE BRONZE CROSS PENDANT Circa 9th-11th century AD. One side decorated with ornaments in cross shape. H 42 mm Ex private collection, acquired on the German art market.

50



85 A SMALL BYZANTINE BRONZE RELIQUARY CROSS Circa 10th-12th century AD. Reliquary cross (enkolpion) depicting Virgin Mary with her hands upraised in prayer ('orans') on one side and Christ crucified with a small cross above his head on the other. Suspension reattached/restored. H 48 mm Ex private collection, acquired on the German art market.

50



86 A BYZANTINE BRONZE CROSS PENDANT WITH VIRGIN MARY Circa 9th-11th century AD. Depicting Virgin Mary with her hands upraised in prayer ('orans'). Slightly bent. H 38 mm Ex private collection, acquired on the German art market.

50



87 A BYZANTINE BRONZE CROSS PENDANT WITH A SAINT Circa 9th-11th century AD. Depicting a Saint with his hands upraised in prayer. H 37 mm Ex private collection, acquired on the German art market.

50



88 A SMALL BYZANTINE BRONZE RELIQUARY CROSS Circa 10th-12th century AD. One half of a reliquary cross (enkolpion) depicting Christ crucified. H 48 mm Ex private collection, acquired on the German art market.

50



89 A ROMAN BRONZE HORSE BROOCH Circa 2nd-3rd century AD. Horse standing to left on horizontal base. A good amount of (toned) tinning remains; catch-plate broken, pin missing. L 34 mm, H 30 mm Ex private collection, acquired on the German art market.

50



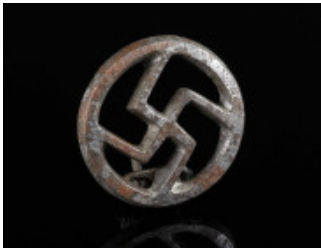
90 A ROMAN BRONZE BROOCH OF A GRAZING HORSE Circa 2nd-3rd century AD. Horse to left on horizontal base. Part of tail and pin missing. L 33 mm Private property, acquired on the European art market.

50



91 A ROMAN BRONZE DOUBLE DOLPHIN BROOCH Circa 2nd-3rd century AD. The bow in the shape of two stylised dolphins; with hinged pin (pin restored); pitted surface with remains of original tinning. L 32 mm Ex Austrian private collection; acquired on the European art market.

70



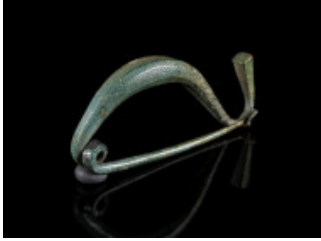
92 A ROMAN TINNED BRONZE SWASTIKA BROOCH Circa 2nd-3rd century AD. With four clockwise rotation arms within a circular frame; much of the original tinning remains. With spring; pin missing, and upper part of catch-plate broken. Diameter 33 mm Acquired on the European art market.

80



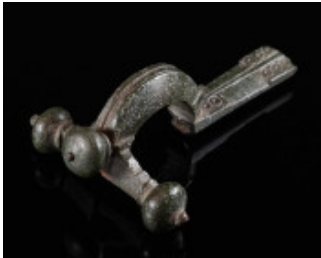
93 A ROMAN BRONZE SWASTIKA BROOCH Circa 2nd-3rd century AD. With four anti-clockwise rotation arms; decorated with incised grooves and lines. Pin missing; catch-plate bent outwards. L 30 mm Private property, acquired on the European art market.

60



94 AN IRON AGE/EASTERN CELTIC BRONZE BOW BROOCH Circa 4th-3rd century BC. La Tène Type brooch, Early-Middle La Tène Period. Made of one piece with spring and pin; the foot terminates in a faceted conical knob. L 37 mm Ex Austrian private collection; acquired on the European art market.

50



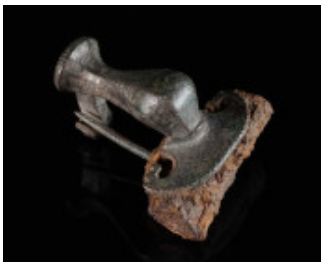
95 A LATE ROMAN BRONZE CROSSBOW BROOCH Circa 4th century AD. The foot with ring and dot decoration; attractive dark green patina with very minor pitting; hinged iron pin not preserved. L 78 mm Ex Austrian private collection; acquired on the European art market.

70



96 A ROMAN BRONZE BOW BROOCH OF THE 'SONTHEIM' TYPE Circa later 1st-2nd century AD. With tinning and elaborate decoration; hinged pin made of iron now missing. Type 3b after Grönke/Weinlich 1994. L 45 mm Acquired on the UK art market.

80



97 A LARGE ROMAN BRONZE KNEE BROOCH Circa 2nd-3rd century AD. With faceted arched bow leading to a pelta-shaped head plate; spring and pin made of bronze, cylindrical hood made of iron. L 43 mm Acquired on the UK art market.

80



98 A LARGE ROMAN BRONZE KNEE BROOCH Circa 2nd-3rd century AD. With faceted bow and hinged pin. L 50 mm Acquired on the UK art market.

30



99 A LARGE ROMAN BRONZE KNEE BROOCH Circa 2nd-3rd century AD. With spring and pin. L 55 mm Acquired on the UK art market.

25



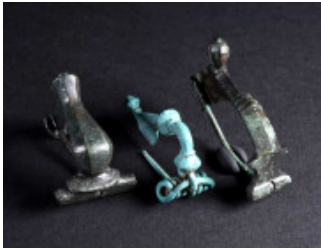
100 A MIGRATION PERIOD/GEPIDIC BRONZE BROOCH Circa 5th century AD. Bow brooch with semicircular head plate with three knobs and rhombic foot terminating in a profiled knob. Toned tinning on upper side; remains of the iron spring/pin at the back. L 57 mm Ex Austrian private collection; acquired on the European art market.

120



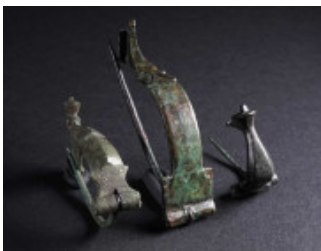
101 A GROUP OF THREE ROMAN BRONZE BROOCHES Circa 2nd-3rd century AD. A knee brooch and two bow brooches, one decorated with dot and ring marks; all with hinged pin. L 30-43 mm Ex private collection, acquired on the German art market.

50



102 A GROUP OF THREE ROMAN BRONZE BROOCHES Circa 2nd-3rd century AD. A knee brooch with faceted bow, a strongly profiled brooch, and a bow brooch; one with spring and pin, two with hinged pin. L 34-41 mm Ex private collection, acquired on the German art market.

50



103 A GROUP OF THREE ROMAN BRONZE BROOCHES Circa 2nd-3rd century AD. Two bow brooches and a knee brooch with faceted bow; the larger bow brooch decorated with a wolf's head; all with hinged pins. L 28-66 mm Ex private collection, acquired on the German art market.

50



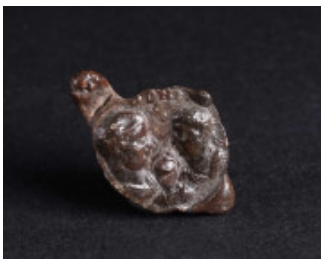
104 A GROUP OF THREE ROMAN BRONZE BROOCHES Circa 2nd-3rd century AD. Two bow brooches and a knee brooch; one with decorated bow; all with hinged pins. L 29-48 mm Ex private collection, acquired on the German art market.

50



105 A LA TENÈ TYPE BRONZE BROOCH, AND TWO ROMAN BROOCHES Circa 4th-3rd century BC, and 2nd-3rd century AD. The La Tène brooch made of one piece with spring and pin, the foot terminates in a circular disk; the Roman bow and knee brooch with hinged pins. L 30-42 mm Ex private collection, acquired on the German art market.

50



106 A LATE ROMAN LEAD SEAL WITH TWO EMPERORS AND A CAESAR Circa 4th century AD. The seal depicts two busts facing each other, and a smaller facing bust between them. They all appear to be draped and cuirassed. The legend DD NN for the plural D(omini) N(ostri) identifies the two larger busts as Augusti (emperors), while the smaller bust shows a Caesar. Diameter 15 mm (max. length 24 mm) Ex private collection, acquired on the German art market.

50



107 TWO BYZANTINE LEAD SEALS WITH HOLY FIGURES Circa 11th-12th century AD. The larger showing Virgin Mary: ligate legend MHP - ΘV (MHTHP ΘEOY), nimbate Mother of God 'Episkepsis', raising both hands in prayer, medallion of Christ on her chest; the other with a nimbate bust of a saint with spear. Both with inscription on reverse. Diameter 25 mm (left), and 19 mm (right) Ex private collection, acquired on the German art market.

50



108 THREE BYZANTINE LEAD SEALS AND A BRONZE PLAQUE
Circa 5th/6th to 11th/12th century. The small seal at the outer left probably late antique or early Byzantine, showing two busts, an eagle, and a lion on one side, and possibly the sacrifice of Isaac(?) on the other; the bronze plaque with Virgin Mary, Mother of God, ligate legend MHP - ΘV (MHTHP ΘEOY), raising both hands in prayer; one seal with inscription only, the other featuring a saint with spear and an inscription on the reverse. Diameter 15-28 mm Ex private collection, acquired on the German art market.

50



109 A BYZANTINE BRONZE SEAL MATRIX WITH HOLY RIDER
Circa 8th-10th century AD. Conical-shaped seal matrix with suspension loop depicting a saint with halo and sword/spear on horseback to right. Diameter 16 mm; H 20 mm Ex private collection, acquired on the German art market.

50



110 A MEDIEVAL BRONZE SEAL MATRIX Circa 14th-15th century AD. Circular seal matrix, coat of arms in the middle; Latin inscription in Gothic script starting with S(IGILLUM) around. Suspension loop on reverse. Diameter 29 mm Acquired on the UK art market.

200



111 A ROMAN BRONZE LID OF A SEAL BOX WITH A HARE Circa 1st-2nd century AD. Lid of a circular seal box with separately riveted zoomorphic form (hare); tinned. Part of ear missing. Diameter 20 mm Private property, acquired on the European art market.

30



112 A ROMAN BRONZE OIL LAMP IN THE SHAPE OF FOOT WITH SANDAL Circa 1st-2nd century AD. Small cast-bronze oil lamp in the shape of a right foot wearing a sandal. The big toe is resting on the upturned nozzle. The vertical loop handle is not preserved; waxed, and the patina gently touched up. L 77 mm, H 28 mm Ex Austrian private collection; acquired on the European art market.

580



113 AN EARLY BYZANTINE BRONZE OIL LAMP Circa 5th-6th century AD. With elongated body and a loop-handle; spout corroded through at one spot. L 10.2 cm Private property, acquired on the European art market.

150



114 AN ELABORATE ROMAN BRONZE KEY Circa 1st-3rd century AD. With a short square shank and an intricate offset bit; some damage to key bit. L 43 mm Private property, acquired on the European art market.

50



115 TWO ROMAN BRONZE KEYS Circa 1st-3rd century AD. One with a wide head (handle) with loop; the other with an openwork head with offset loop. Both with short shank and offset bit. L 57 mm, and L 68 mm Private property, acquired on the European art market.

100



116 A ROMAN BRONZE KEY RING Circa 1st-3rd century AD. With an offset intricate openwork bit; the top of the hoop and the bit decorated with incised lines. H 21 mm, L 20 mm Acquired on the European art market.

50



117 A ROMAN BRONZE KEY RING Circa 1st-3rd century AD. With a short projecting shank and an offset intricate bit. Two deep scratches. H 29, W 25 mm Acquired on the European art market.

50



118 A ROMAN BRONZE KEY RING Circa 1st-3rd century AD. With a projecting shank and an offset bit. H 23 mm, L 22 mm Acquired on the European art market.

50



119 A ROMAN BRONZE KEY RING Circa 1st-3rd century AD. With a short projecting shank and an offset bit. H 28 mm, L 19 mm Acquired on the European art market.

50



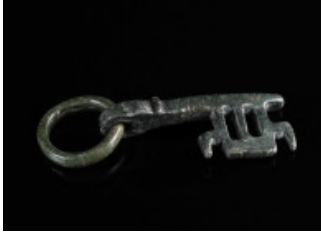
120 A ROMAN BRONZE KEY RING Circa 1st-3rd century AD. With an offset square openwork bit; the top of the hoop decorated with incised lines and a cross. H 20 mm, L 19 mm Acquired on the European art market.

50



121 A ROMAN BRONZE KEY RING Circa 1st-3rd century AD. With an offset square openwork bit; the top of the hoop decorated with incised lines. H 18 mm, L 20 mm Acquired on the European art market.

50



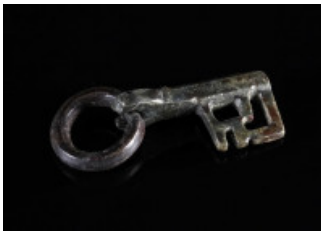
122 A BYZANTINE BRONZE FOLDING KEY Circa 5th-6th century AD. With elaborate key bit in openwork. L 50 mm (total) Ex private collection, acquired on the German art market.

50



123 A BYZANTINE BRONZE FOLDING KEY Circa 5th-6th century AD. With hollow shank and key bit in openwork. Small hole on one side of shank. L 40 mm (total) Ex private collection, acquired on the German art market.

50



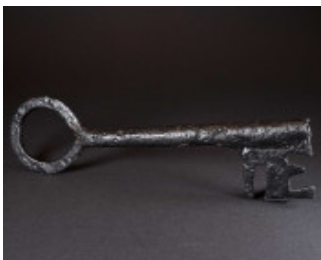
124 A BYZANTINE BRONZE FOLDING KEY Circa 5th-6th century AD. With hollow shank and elaborate key bit in openwork. L 46 mm (total) Ex private collection, acquired on the German art market.

50



125 TWO ROMAN BRONZE KEYS Circa 2nd-4th century AD. One with a long hollow shank with a simple key bit; the other a key ring with a short projecting shank and offset bit. L 87mm; and H 24 mm, L 19 mm (key ring) Ex private collection, acquired on the German art market.

50



126 A VERY LARGE ROMANESQUE IRON KEY Circa 10th-12th century AD. With a round loop and a long hollow shank. Rectangular bit with several key wards. L 22 cm Ex Austrian private collection; acquired on the European art market.

220



127 A BYZANTINE BRONZE BELT BUCKLE WITH A GRIFFIN Circa 9th-11th century AD. Square plate from a belt-buckle; in relief, a griffin or winged horse striding left. H 30 mm, L 30 mm Ex private collection, acquired on the German art market.

50



128 A BYZANTINE BRONZE BELT BUCKLE WITH A GRIFFIN Circa 9th-11th century AD. Square plate from a belt-buckle; in relief, a griffin striding left; two attachment lugs at one end. H 26 mm, L 28 mm Ex private collection, acquired on the German art market.

50



129 A BYZANTINE BRONZE BELT BUCKLE WITH A HUNTING SCENE Circa 9th-11th century AD. Square plate from a belt-buckle; in relief, a hunter on horseback with a standing lion facing him; one attachment lug at one end preserved. H 28 mm, L 32 mm Ex private collection, acquired on the German art market.

50



130 A LARGE BYZANTINE BRONZE BELT BUCKLE WITH A HUNTING SCENE Circa 9th-11th century AD. Large square plate from a belt-buckle; in relief, a stylised hunting scene(?); two attachment lugs at one end. H 35 mm, L 55 mm Ex private collection, acquired on the German art market.

50



131 TWO BYZANTINE BRONZE BELT BUCKLES WITH LIONS Circa 9th-11th century AD. Two square plates from belt-buckles; in relief, highly stylised lions; attachment lugs preserved at one end. H 24mm, L 28 mm (left), and H 25 mm, L 36 mm (right) Ex private collection, acquired on the German art market.

50



132 A BYZANTINE BRONZE BELT BUCKLE WITH A GRIFFIN Circa 9th-11th century AD. Square plate from a belt-buckle; in relief, a griffin or winged horse striding left. H 24 mm, L 29 mm Ex private collection, acquired on the German art market.

50



133 A BYZANTINE BRONZE BELT BUCKLE WITH AN ANIMAL Circa 9th-11th century AD. Square plate from a belt-buckle; in relief, a highly stylised animal representation; two attachment lugs at one end. H 25 mm, L 29 mm Ex private collection, acquired on the German art market.

50



134 A BYZANTINE BRONZE BUCKLE WITH TRIANGULAR PLATE Circa 7th-8th century AD. Plate with geometric design; three attachment lugs on the reverse. L 63 mm Ex private collection, acquired on the German art market.

50



135 AN EARLY MEDIEVAL AND A POST MEDIEVAL BUCKLE Circa 5th century AD, and 16th-17th century AD. A small migration period silver buckle with decorated oval plate, and an S-shaped bronze buckle with stylised animal heads. L 22 mm (silver buckle), and L 65 mm (bronze buckle) Ex private collection, acquired on the German art market.

50



136 A GROUP OF FOUR ROMAN AMPHORA-SHAPED BRONZE STRAP-ENDS Circa 4th century AD. Late Roman strap-ends from military belts. L 20-58 mm Ex private collection, acquired on the German art market.

50



137 A GROUP OF FIVE ROMAN BRONZE PELTA/BOW SHAPED APPLIQUES Circa 2nd-3rd century AD. L 26-43 mm Ex private collection, acquired on the German art market.

50



138 A GROUP OF THREE LATE ROMAN-BYZANTINE BRONZE WEIGHTS Circa 4th-7th century AD. One of them in the form of a flattened sphere, the others square. Square: 12x12 mm, and 13x13 mm; sphere: D 12 mm, H 10 mm Ex private collection, acquired on the German art market.

50



139 A GROUP OF EIGHT LATE ROMAN-BYZANTINE BRONZE WEIGHTS Circa 4th-7th century AD. Square and round shapes; three of them made from old coins. Dimensions: 10-17 mm Ex private collection, acquired on the German art market.

50



140 A GROUP OF THREE LATE ROMAN-BYZANTINE BRONZE WEIGHTS Circa 4th-7th century AD. An octagonal, a flattened spherical, and a square weight. Dimensions: 9-22 mm Ex private collection, acquired on the German art market.

50



141 A GROUP OF THREE PROBABLY OTTOMAN BRONZE WEIGHTS Circa 14th-17th century AD. Dimensions: 13-22 mm Ex private collection, acquired on the German art market.

50



142 A ROMAN PALE BLUE GLASS BALSAMARIUM Circa 1st-3rd century AD. Tall transparent unguent vessel with elongated tubular neck. Intact. L 11.1 cm Ex private collection, acquired on the German art market.

50



143 A ROMAN PALE BLUE GLASS BALSAMARIUM Circa 1st-3rd century AD. Tall and slim unguent vessel with elongated tubular neck. Intact. L 11.9 cm Ex private collection, acquired on the German art market.

50



144 A ROMAN VOTIVE PLAQUE IN THE FORM OF A TABULA ANSATA Circa 1st century AD. Left part of an early Roman inscribed votive plaque. Dedicated to the Genius of? (GENIO...) and commissioned by an imperial slave of the emperor Nero (IMP NERO...AVG SER)? L 46 mm, H 50 mm Acquired on the European art market.

400



145 A ROMAN BRONZE MILITARY DIPLOMA FRAGMENT Constitution of Antoninus Pius, AD 153 Issued for a soldier serving in Mauretania Tingitana under the provincial governor Flavius Flavianus. Fragment of tabella I with some of the military units, the province, and the provincial governor (preserved letters in BOLD): III ASTV[RVM C(IVIVM) R(OMANORVM)]; [LEMA]VOR(VM) C(IVIVM) R(OMANORVM); [GALLOR(VM) C(IVIVM)] R(OMANORVM) ET IV TV[NGR(ORVM) V(EXILLATIO) ET SVNT IN MAVR]JETAN(IA) T[INGITAN(A) SVB FLAVIO FLAVIAN]O PRO[C(VRATORE)]... Cf. W. Eck and A. Pangerl, 'Neue Militärdiplome für die Truppen der mauretanischen Provinzen', ZPE 153 (2005), 187-206. H 35 mm, W 25 mm Ex private collection, acquired on the German art market.

50



146 A SMALL ROMAN BRONZE DISK WITH PUNCHED INSCRIPTION Circa 2nd-3rd century AD. With circular inscription and a central hole for attachment. Probably a name tag from a military context indicating the abbreviated owner's name of equipment. Diameter 35 mm Ex private collection, acquired on the German art market.

50



147 A TRAPEZOID ROMAN GOLD VOTIVE PLAQUE WITH INSCRIPTION Circa 1st-3rd century AD. A small plaque made of thin sheet metal with a punched inscription possibly reading MVNT (?). Intact but straightened, with several cracks. L 54 mm, H 17 mm; 1.26 g Ex Austrian private collection; ex Saint Paul Antiques, London 2017.

220



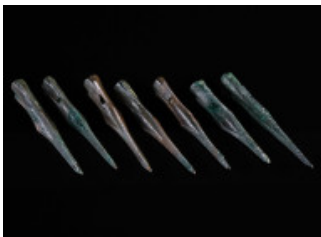
148 A FINELY WORKED ROMAN GOLD MINIATURE SPEAR Circa 1st-3rd century AD. Probably originally attached to a statuette of Mars or Minerva, or a votive offering. L 76 mm, 2.58 g Ex private collection, acquired on the German art market.

150



149 A FINELY WORKED ROMAN SILVER MINIATURE SPEAR Circa 1st-3rd century AD. Probably originally attached to a statuette of Mars or Minerva, or a votive offering. L 20.4 cm Ex private collection, acquired on the German art market.

50



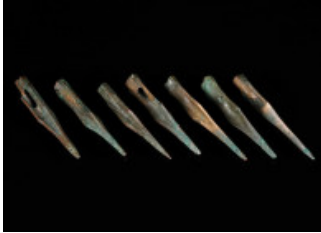
150 A GROUP OF SEVEN SCYTHIAN OR GREEK BRONZE ARROWHEADS Circa 6th-3rd century BC. Triangular cross-section; with socket and a very long point. Commonly referred to as 'Scythian', this kind of arrowhead was used by different tribes and cultures. L 34-40 mm Ex private collection, acquired on the German art market.

50



151 A GROUP OF SEVEN SCYTHIAN OR GREEK BRONZE ARROWHEADS Circa 6th-3rd century BC. Triangular cross-section; with socket and a very long point. Commonly referred to as 'Scythian', this kind of arrowhead was used by different tribes and cultures. L 32-38 mm Ex private collection, acquired on the German art market.

50



152 A GROUP OF SEVEN SCYTHIAN OR GREEK BRONZE ARROWHEADS Circa 6th-3rd century BC. Triangular cross-section; with socket and a very long point. Commonly referred to as 'Scythian', this kind of arrowhead was used by different tribes and cultures. L 34-37 mm Ex private collection, acquired on the German art market.

50



153 A GROUP OF TEN MEDIEVAL IRON ARROWHEADS Circa 12th-14th century AD. With different body/blade shapes; all with tang (one not preserved). L 30-85 mm Ex private collection, acquired on the German art market.

50



154 AN EARLY BRONZE AGE SHAFT-HOLE AXE HEAD Circa 2200-1600 BC. A massive copper alloy cast axe head ('Schafthlochaxt'). L 13.5 cm Ex private collection, acquired on the German art market.

120



155 A SMALL LATE BRONZE AGE SOCKETED AXE HEAD Circa 1000-800 BC. Very small bronze axe head with attractive green patina. L 61 mm Ex private collection, acquired on the German art market.

50



156 A LATE BRONZE AGE KNIFE Circa 1000-800 BC. Complete bronze knife with full handle tang and grip pin (rivet); attractive green patina. L 12.3 cm Ex Austrian private collection; acquired on the European art market.

50



157 A LATE BRONZE AGE BRACELET Circa 1000-800 BC. Small bracelet made of bronze rod; overlapping tapered ends with incised decoration; with an attractive dark green patina. Diameter: 52 mm Ex Austrian private collection; acquired on the European art market.

50



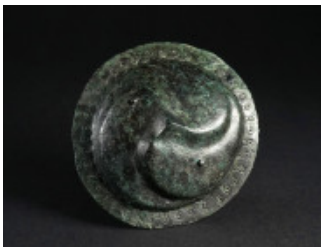
158 A LATE BRONZE AGE BRACELET Circa 1000-800 BC. Small bracelet made of bronze rod; overlapping tapered ends with incised decoration. Diameter 56 mm Ex Austrian private collection; acquired on the European art market.

50



159 THREE LATE BRONZE AGE PENDANTS Circa 1200-800 BC. Circular hoop with triangular extension for suspension. Attractive green patina, with a few chips on the edges. H 76 mm each Acquired on the European art market.

250



160 AN IRON AGE/CELTIC BRONZE APPLIQUE WITH TRISKELE DECORATION Circa 4th-2nd century BC, Eastern Celts. Made of sheet metal; the triskele worked in repoussé, the flat rim decorated with a punched design; two studs for attachment and remains of iron on the back. Diameter 73 mm Ex private collection, acquired on the German art market.

50



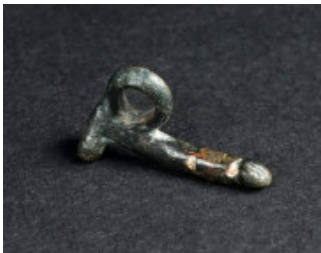
161 A ROMAN OR LATE ANTIQUE MINIATURE LEAD AMPHORA Circa 1st-5th century AD(?) Hollow cast miniature lead amphora with conical body and wide angled handles. Inscribed around in Greek letters. H 41 mm Ex Austrian private collection; acquired on the European art market.

70



162 A ROMAN OR LATE ANTIQUE MINIATURE LEAD AMPHORA Circa 1st-5th century AD(?) Hollow cast miniature lead amphora with ovoid body, small, looped handles, and a pointed base. Decorated with a band of wave-pattern. Slightly deformed with minor damage to neck. H 60 mm Ex Austrian private collection; acquired on the European art market.

70



163 A SMALL ROMAN BRONZE PHALLIC AMULET Circa 2nd-3rd century AD. These amulets (fascina) were thought to bring good luck and ward off evil spirits. L 21 mm Ex private collection, acquired on the German art market.

40



164 A LARGE TURKO-SLAVIC BRONZE THIMBLE Circa 12th-13th century AD. Heavy and bulbous thimble with ventilation holes at the top. H 30 mm, D 29 mm Ex private collection, acquired on the German art market.

50



165 A LATE IRON AGE BRONZE PENDANT, AND AN AXE PENDANT Circa 2nd-1st century BC, and 1st century AD. A profiled Celtic pendant terminating in three small knobs; and a Celto-Roman bronze axe pendant with suspension hoop. L 30 mm, and L 51 mm Ex private collection, acquired on the German art market.

50