



NBS Auctions

Web Auction 20

11 November 2023

All prices are starting prices (EUR)
PDF catalog created by www.biddr.com



1 Caracalla (AD 198-217). AR tetradrachm. Laureate head of Caracalla right / Eagle standing facing on small club, head right, with wings spread, holding wreath in beak; star between legs. McAlee 686. Prieur 233. Superb strike with lustrous fields. Condition: Very Fine W :13.5 gr H :26 mm

1



2 Caracalla (AD 198-217). AR tetradrachm. Laureate head of Caracalla right / Eagle standing facing on small club, head right, with wings spread, holding wreath in beak; star between legs. McAlee 686. Prieur 233. Condition: Very Fine W :12.8 gr H :26 mm

1



3 Seleucis and Pieria. Laodicea ad Mare. Macrinus. AD 217-218. AR Tetradrachm. Laureate, draped, and cuirassed bust right / Eagle standing facing, head and tail left, with wings spread, holding wreath in beak; star between legs. Prieur 1184 Condition: Very Fine W :13.6 gr H :26 mm

1



4 Seleucis and Pieria. Antioch . Philip I. AD 244-249. AR Tetradrachm. Rome mint for Antioch. Struck AD 246. AVTOK K M IOYΛ ΦΙΛΙΠΠΟΥ CEB, laureate, draped, and cuirassed bust left / ΔΗΜΑΡΧ ΕΞΟΥCΙΑC, eagle standing facing, head and tail left, with wings spread, holding wreath in beak; S-C across field, MON(eta) VRB(is) in exergue. McAlee 899; Prieur 304. Superb EF, toned. Wonderful portrait. Condition: Very Fine W :13.6 gr H :26 mm

1



5 Seleucis and Pieria. Antioch . Philip I. AD 244-249. AR Tetradrachm. AVTOK K M IOYΛ ΦΙΛΙΠΠΟΥ CEB Laureate, draped and cuirassed bust r. Rev. ΔΗΜΑΡΧ ΕΞΟΥCΙΑC Eagle standing facing with spread wings, head l.; in upper r. field, Δ. Behind wings, S - C and below, MON VRB. Prieur 308. Condition: Very Fine W :13.6 gr H :27 mm

1



6 Seleucia and Pieria. Antioch . Philip I. AD 244-249. AR Tetradrachm. ΑΥΤΟΚ Κ ΜΙΟΥΛ ΦΙΛΙΠΠΟΥ ΣΕΒ Laureate, draped and cuirassed bust r. Rev. ΔΗΜΑΡΧ ΕΞΟΥΣΙΑΣ Eagle standing facing with spread wings, head l.; in upper r. field, Β. Behind wings, S - C and below, ΜΟΝ VΡΒ. McAllee 901d; Prieur 306. Condition: Very Fine W :12.8 gr H :26 mm

1



7 Seleucia and Pieria. Antioch. Philip I, 244-249. Tetradrachm. ΑΥΤΟΚ Κ Μ ΙΟΥΛ ΦΙΛΙΠΠΟΥ ΣΕΒ Laureate, draped and cuirassed bust of Philip I to right, seen from behind. Rev. ΔΗΜΑΡΧ ΕΞΟΥΣΙΑΣ / S - C / ΜΟΝ VΡΒ Eagle standing right with wings spread, head to left and holding wreath in beak; to right of the eagle's head, Δ. McAlee 901d. Prieur 308. A beautifully struck piece with a bold portrait. Condition: Very Fine W :12.8 gr H :26 mm

1



8 SYRIA, Seleucia and Pieria. Antioch. Philip I, 244-249. Tetradrachm, 249. ΑΥΤΟΚ Κ Μ ΙΟΥΛΙ ΦΙΛΙΠΠΟΣ ΣΕΒ Laureate, draped and cuirassed bust of Philip I to right, seen from behind; below bust, ••••. Rev. ΔΗΜΑΡΧ ΕΞΟΥΣΙΑΣ ΥΠΑ ΤΟ Δ / ΑΝΤΙΟΧΙΑ / S C Eagle with spread wings standing right, holding wreath in beak. McAlee 963d. Prieur 485. Rare. Condition: Very Fine W :13 gr H :28 mm

1



9 Seleucia and Pieria. Antioch . Philip II. AD 247-249. Tetradrachm. Reference: Condition: Very Fine W :12.8 gr H :26 mm

1



10 Seleucia and Pieria. Antioch . Philip II. AD 247-249. Tetradrachm. Reference: Condition: Very Fine W :13 gr H :26 mm

1



11 Seleucis and Pieria. Antioch . Philip II. AD 247-249.
Tetradrachm. Reference: Condition: Very Fine W :4.9 gr H :15.4
mm

1



12 Seleucis and Pieria. Antioch . Philip II. AD 247-249.
Tetradrachm. Reference: Condition: Very Fine W :13 gr H :26 mm

1



13 Seleucis and Pieria. Antioch . Philip II. AD 247-249.
Tetradrachm. Reference: Condition: Very Fine W :13 gr H :26 mm

1



14 Seleucis and Pieria. Antioch . Philip II. AD 247-249.
Tetradrachm. Reference: Condition: Very Fine W :13 gr H :26 mm

1



15 Seleucis and Pieria. Antioch . Philip II. AD 247-249.
Tetradrachm. Reference: Condition: Very Fine W :13 gr H :26 mm

1



16 Seleucis and Pieria. Antioch . Philip II. AD 247-249.
Tetradrachm. Reference: Condition: Very Fine W :13 gr H :26 mm

1



17 Seleucis and Pieria. Antioch . Philip II. AD 247-249.
Tetradrachm. Reference: Condition: Very Fine W :13 gr H :26 mm

1



18 Trajan Decius. Tetradrachm. Antioch, c. 250-1 AD. Obv: AVT K Γ ME KV ΔEKIOC TPAIANOC CEB Laureate, draped, cuirassed bust right, three pellets (officina 3) below bust. Rx: ΔΗΜΑΡΧ ΕΞΟΥΣΙΑC around, S C in exergue, Eagle with spread wings standing right on palm branch, holding wreath in beak. McAlee 1113c (Scarce). Condition: Very Fine W :13 gr H :26 mm

1



19 Trajan Decius. Tetradrachm. Antioch, c. 250-1 AD. Reference: Condition: Very Fine W :13 gr H :26 mm

1



20 Trajan Decius. Tetradrachm. Antioch, c. 250-1 AD. Reference: Condition: Very Fine W :13 gr H :26 mm

1



21 Trajan Decius. Tetradrachm. Antioch, c. 250-1 AD. Reference: Condition: Very Fine W :4.4 gr H :17 mm

1



22 SELEUCIS and PIERIA, Antioch. Otacilia Severa. Augusta, AD 244-249. Tetradrachm Reference: Condition: Very Fine W :13 gr H :26 mm

1



23 Seleucis and Pieria. Antioch. Gordian III, 238-244. Tetradrachm Reference: Condition: Very Fine W :13 gr H :26 mm

1



24 Seleucis and Pieria. Antiochia ad Orontem. Elagabalus. A.D. 218-222. Tetradrachm Reference: Condition: Very Fine W :13 gr H :26 mm

1



25 Seleucis and Pieria. Antiochia ad Orontem. Elagabalus. A.D. 218-222. Tetradrachm Reference: Condition: Very Fine W :13 gr H :26 mm

1



26 Seleucis and Pieria. Antiochia ad Orontem. Elagabalus. A.D. 218-222. Tetradrachm Reference: Condition: Very Fine W :11 gr H :26 mm

1



27 Seleucis and Pieria. Antioch . Philip II. AD 247-249. Tetradrachm. Reference: Condition: Very Fine W :13 gr H :26 mm

1



28 Seleucis and Pieria. Antioch . Philip II. AD 247-249. Tetradrachm. Reference: Condition: Very Fine W :13 gr H :26 mm

1



29 Seleucis and Pieria. Antioch . Philip II. AD 247-249. Tetradrachm. Reference: Condition: Very Fine W :13 gr H :26 mm

1



30 Seleucis and Pieria. Antioch . Philip II. AD 247-249. Tetradrachm. Reference: Condition: Very Fine W :13 gr H :26 mm

1



31 Seleucis and Pieria. Antioch . Philip II. AD 247-249. Tetradrachm. Reference: Condition: Very Fine W :13 gr H :26 mm

1



32 Seleucis and Pieria. Antioch . Philip II. AD 247-249. Tetradrachm. Reference: Condition: Very Fine W :13 gr H :26 mm

1



33 Seleucis and Pieria. Antioch . Philip II. AD 247-249. Tetradrachm. Reference: Condition: Very Fine W :13 gr H :26 mm

1



34 Seleucis and Pieria. Antioch . Philip II. AD 247-249. Tetradrachm. Reference: Condition: Very Fine W :13 gr H :26 mm

1



35 Seleucis and Pieria. Antioch . Philip II. AD 247-249. Tetradrachm. Reference: Condition: Very Fine W :13 gr H :26 mm

1



36 Seleucis and Pieria. Antioch . Otacilia Severa. Augusta, AD 244-249. AR Tetradrachm . Draped bust right, wearing stephane, crescent at shoulders / Eagle standing right, holding wreath in beak. McAlee 1096; Prieur 383. Condition: Very Fine W :13 gr H :28 mm

1



37 Trajan Decius. Tetradrachm. Antioch, c. 250-1 AD. Obv: AVT K Γ ME KV ΔEKIOC TPAIANOC CEB Laureate, draped, cuirassed bust right, three pellets (officina 3) below bust. Rx: ΔΗΜΑΡΧ ΕΞΟΥΣΙΑC around, S C in exergue, Eagle with spread wings standing right on palm branch, holding wreath in beak. McAlee 1113c (Scarce). Condition: Very Fine W :13 gr H :26 mm

1



38 Seleucia and Pieria. Antiochia ad Orontem. Elagabalus. A.D. 218-222. Tetradrachm Reference: Condition: Very Fine W :13 gr H :26 mm

1



39 Seleucia and Pieria. Antiochia ad Orontem. Elagabalus. A.D. 218-222. Tetradrachm Reference: Condition: Very Fine W :11 gr H :26 mm

1



40 CAPPADOCIA, Caesaraea-Eusebia. Trajan. AD 98-117. AR Didrachm Reference: Condition: Very Fine W :7.1 gr H :23 mm

1



41 SELEUKID EMPIRE. Antiochos VII Euergetes (Sidetes). 138-129 BC. AR Tetradrachm Reference: Condition: Very Fine W :16.65 gr H :28.5 mm

1



42 KINGS OF ARMENIA. Tigranes I (123-96 BC). Ae Chalkous. Reference: Condition: Very Fine W :1.6 gr H :15 mm

1



43 KINGS OF ARMENIA. Tigranes I (123-96 BC). Ae Chalkous. Reference: Condition: Very Fine W :1.5 gr H :15.5 mm

1



44 KINGS OF ARMENIA. Tigranes I (123-96 BC). Ae Chalkous. Reference: Condition: Very Fine W :2 gr H :15.3 mm

1



45 ARMENIAN KINGDOM. Tigranes II the Great (95-56 BC). AE
Reference: Condition: Very Fine W :1.6 gr H :5 mm

1



46 ARMENIAN KINGDOM. Tigranes II the Great (95-56 BC). AE
Reference: Condition: Very Fine W :1.7 gr H :14.3 mm

1



47 JUDAEA, Herodians. Herod II Archelaos. 4 BCE-6 CE. Æ Prutah
Reference: Condition: Very Fine W :2.2 gr H :14.7 mm

1



48 PHARONIC KINGS OF EGYPT. Nektanebo II (361-343 BC). Ae.
Ob: Ram leaping left, head reverted. Rev: Scales; dot below;
countermark with helmeted bust right. Condition: Very Fine W
:3.7 gr H :15.5 mm

1



49 Greek Coins. 4th - 1st century B.C. AE Reference: Condition:
Very Fine W :2.2 gr H :12.2 mm

1



50 Greek Coins. 4th - 1st century B.C. AE Reference: Condition:
Very Fine W :1.7 gr H :10.9 mm

1



51 Greek Coins. 4th - 1st century B.C. AE Reference: Condition:
Very Fine W :1.1 gr H :9.4 mm

1



52 Greek Coins. 4th - 1st century B.C. AE Reference: Condition:
Very Fine W :3.8 gr H :15.9 mm

1



53 Greek Coins. 4th - 1st century B.C. AE Reference: Condition:
Very Fine W :4.5 gr H :16.6 mm

1



54 Kings of Bithynia. Prusias II (182-149 BC). Ae Reference:
Condition: Very Fine W :5 gr H :18.8 mm

1



55 Kings of Bithynia. Prusias II (182-149 BC). Ae Reference:
Condition: Very Fine W :3.6 gr H :17 mm

1



56 Kings of Bithynia. Prusias II (182-149 BC). Ae Reference:
Condition: Very Fine W :3.7 gr H :18 mm

1



57 Kings of Bithynia. Prusias II (182-149 BC). Ae Reference:
Condition: Very Fine W :3.8 gr H :17 mm

1



58 Greek Coins. 4th - 1st century B.C. AE Reference: Condition:
Very Fine W :10.2 gr H :26 mm

1



59 Greek Coins. 4th - 1st century B.C. AE Reference: Condition:
Very Fine W :2.3 gr H :12.6 mm

1



60 Greek Coins. 4th - 1st century B.C. AE Reference: Condition:
Very Fine W :5.6 gr H :20.8 mm

1



61 Greek Coins. 4th - 1st century B.C. AE Reference: Condition:
Very Fine W :5.2 gr H :20 mm

1



62 Greek Coins. 4th - 1st century B.C. AE Reference: Condition:
Very Fine W :5.9 gr H :19 mm

1



63 Greek Coins. 4th - 1st century B.C. AE Reference: Condition:
Very Fine W :6.2 gr H :18.7 mm

1



64 Greek Coins. 4th - 1st century B.C. AE Reference: Condition:
Very Fine W :6 gr H :20.9 mm

1



65 Greek Coins. 4th - 1st century B.C. AE Reference: Condition:
Very Fine W :1.4 gr H :10.8 mm

1



66 Greek Coins. 4th - 1st century B.C. AE Reference: Condition:
Very Fine W :3.5 gr H :14.8 mm

1



67 Greek Coins. 4th - 1st century B.C. AE Reference: Condition:
Very Fine W :1.4 gr H :10.5 mm

1



68 Greek Coins. 4th - 1st century B.C. AE Reference: Condition:
Very Fine W :1.5 gr H :9.8 mm

1



69 Greek Coins. 4th - 1st century B.C. AE Reference: Condition:
Very Fine W :2 gr H :15 mm

1



70 Greek Coins. 4th - 1st century B.C. AE Reference: Condition:
Very Fine W :3.4 gr H :15.8 mm

1



71 Greek Coins. 4th - 1st century B.C. AE Reference: Condition:
Very Fine W :8.4 gr H :21.8 mm

1



72 Greek Coins. 4th - 1st century B.C. AE Reference: Condition:
Very Fine W :8.5 gr H :19.1 mm

1



73 Greek Coins. 4th - 1st century B.C. AE Reference: Condition:
Very Fine W :7.7 gr H :7.8 mm

1



74 Greek Coins. 4th - 1st century B.C. AE Reference: Condition:
Very Fine W :8.8 gr H :20.5 mm

1



75 Greek Coins. 4th - 1st century B.C. AE Reference: Condition:
Very Fine

1



76 Greek Coins. 4th - 1st century B.C. AE Reference: Condition:
Very Fine W :6.8 gr H :21.8 mm

1



77 Greek Coins. 4th - 1st century B.C. AE Reference: Condition:
Very Fine W :6.7 gr H :20.5 mm

1



78 Greek Coins. 4th - 1st century B.C. AE Reference: Condition:
Very Fine W :8.2 gr H :21.5 mm

1



79 Greek Coins. 4th - 1st century B.C. AE Reference: Condition:
Very Fine W :3 gr H :16 mm

1



80 Greek Coins. 4th - 1st century B.C. AE Reference: Condition:
Very Fine W :7.8 gr H :18.6 mm

1



81 Greek Coins. 4th - 1st century B.C. AE Reference: Condition:
Very Fine W :7.8 gr H :18 mm

1



82 Greek Coins. 4th - 1st century B.C. AE Reference: Condition:
Very Fine W :7.8 gr H :21.5 mm

1



83 Greek Coins. 4th - 1st century B.C. AE Reference: Condition:
Very Fine W :7.3 gr H :19.5 mm

1



84 Greek Coins. 4th - 1st century B.C. AE Reference: Condition:
Very Fine W :4.5 gr H :17.5 mm

1



85 Greek Coins. 4th - 1st century B.C. AE Reference: Condition:
Very Fine W :4.3 gr H :16 mm

1



86 Greek Coins. 4th - 1st century B.C. AE Reference: Condition:
Very Fine W :3.6 gr H :18 mm

1



87 Greek Coins. 4th - 1st century B.C. AE Reference: Condition:
Very Fine W :4.8 gr H :17.3 mm

1



88 Greek Coins. 4th - 1st century B.C. AE Reference: Condition:
Very Fine W :4.6 gr H :14.5 mm

1



89 Greek Coins. 4th - 1st century B.C. AE Reference: Condition:
Very Fine W :2.5 gr H :13.6 mm

1



90 Greek Coins. 4th - 1st century B.C. AE Reference: Condition:
Very Fine W :7.5 gr H :19.5 mm

1



91 Greek Coins. 4th - 1st century B.C. AE Reference: Condition:
Very Fine W :4.4 gr H :15.6 mm

1



92 Greek Coins. 4th - 1st century B.C. AE Reference: Condition:
Very Fine W :4.7 gr H :16 mm

1



93 Greek Coins. 4th - 1st century B.C. AE Reference: Condition:
Very Fine W :2.7 gr H :14.4 mm

1



94 Greek Coins. 4th - 1st century B.C. AE Reference: Condition:
Very Fine W :1.5 gr H :10.4 mm

1



95 Greek Coins. 4th - 1st century B.C. AE Reference: Condition:
Very Fine W :3.6 gr H :15.8 mm

1



96 Greek Coins. 4th - 1st century B.C. AE Reference: Condition:
Very Fine W :1.9 gr H :13.4 mm

1



97 Greek Coins. 4th - 1st century B.C. AE Reference: Condition:
Very Fine W :1.4 gr H :9.6 mm

1



98 Greek Coins. 4th - 1st century B.C. AE Reference: Condition:
Very Fine W :2 gr H :10.6 mm

1



99 Greek Coins. 4th - 1st century B.C. AE Reference: Condition:
Very Fine W :1.6 gr H :10.2 mm

1



100 Greek Coins. 4th - 1st century B.C. AE Reference: Condition:
Very Fine W :1.4 gr H :10.5 mm

1



101 Greek Coins. 4th - 1st century B.C. AE Reference: Condition:
Very Fine W :1.8 gr H :9.7 mm

1



102 Greek Coins. 4th - 1st century B.C. AE Reference: Condition:
Very Fine W :4.5 gr H :16.5 mm

1



103 Greek Coins. 4th - 1st century B.C. AE Reference: Condition:
Very Fine W :4.1 gr H :14.5 mm

1



104 Greek Coins. 4th - 1st century B.C. AE Reference: Condition:
Very Fine W :0.9 gr H :9 mm

1



105 Greek Coins. 4th - 1st century B.C. AE Reference: Condition:
Very Fine W :1.5 gr H :10 mm

1



106 Greek Coins. 4th - 1st century B.C. AE Reference: Condition:
Very Fine W :1.5 gr H :10.9 mm

1



107 Greek Coins. 4th - 1st century B.C. AE Reference: Condition:
Very Fine W :1.6 gr H :10.8 mm

1



108 Greek Coins. 4th - 1st century B.C. AE Reference: Condition:
Very Fine W :1.9 gr H :11.2 mm

1



109 Greek Coins. 4th - 1st century B.C. AE Reference: Condition:
Very Fine W :1.7 gr H :10 mm

1



110 Greek Coins. 4th - 1st century B.C. AE Reference: Condition:
Very Fine W :3.9 gr H :14.5 mm

1



111 Greek Coins. 4th - 1st century B.C. AE Reference: Condition:
Very Fine W :2.7 gr H :14 mm

1



112 Greek Coins. 4th - 1st century B.C. AE Reference: Condition:
Very Fine W :2.5 gr H :13.7 mm

1



113 Greek Coins. 4th - 1st century B.C. AE Reference: Condition:
Very Fine W :2.1 gr H :10.4 mm

1



114 Greek Coins. 4th - 1st century B.C. AE Reference: Condition:
Very Fine W :1 gr H :8.7 mm

1



115 Greek Coins. 4th - 1st century B.C. AE Reference: Condition:
Very Fine W :3.7 gr H :14.8 mm

1



116 Greek Coins. 4th - 1st century B.C. AE Reference: Condition:
Very Fine W :4.3 gr H :17.2 mm

1



117 Greek Coins. 4th - 1st century B.C. AE Reference: Condition:
Very Fine W :3.1 gr H :17.5 mm

1



118 Greek Coins. 4th - 1st century B.C. AE Reference: Condition:
Very Fine W :0.9 gr H :9 mm

1



119 Greek Coins. 4th - 1st century B.C. AE Reference: Condition:
Very Fine W :1 gr H :9 mm

1



120 Greek Coins. 4th - 1st century B.C. AE Reference: Condition:
Very Fine W :1 gr H :9.4 mm

1



121 Greek Coins. 4th - 1st century B.C. AE Reference: Condition:
Very Fine W :1 gr H :7.3 mm

1



122 Greek Coins. 4th - 1st century B.C. AE Reference: Condition:
Very Fine W :1 gr H :8.6 mm

1



123 Greek Coins. 4th - 1st century B.C. AE Reference: Condition:
Very Fine W :1 gr H :8 mm

1



124 Greek Coins. 4th - 1st century B.C. AE Reference: Condition:
Very Fine W :9.3 gr H :20.2 mm

1



125 Greek Coins. 4th - 1st century B.C. AE Reference: Condition:
Very Fine W :5 gr H :14.7 mm

1



126 Greek Coins. 4th - 1st century B.C. AE Reference: Condition:
Very Fine W :5.4 gr H :15.5 mm

1



127 Greek Coins. 4th - 1st century B.C. AE Reference: Condition:
Very Fine W :6.3 gr H :16.3 mm

1



128 Greek Coins. 4th - 1st century B.C. AE Reference: Condition:
Very Fine W :4.4 gr H :17 mm

1



129 Greek Coins. 4th - 1st century B.C. AE Reference: Condition:
Very Fine W :8.5 gr H :19 mm

1



130 Greek Coins. 4th - 1st century B.C. AE Reference: Condition:
Very Fine W :8.1 gr H :21.5 mm

1



131 Greek Coins. 4th - 1st century B.C. AE Reference: Condition:
Very Fine W :19.5 gr H :29.5 mm

1



132 Greek Coins. 4th - 1st century B.C. AE Reference: Condition:
Very Fine W :7.7 gr H :22.5 mm

1



133 Greek Coins. 4th - 1st century B.C. AE Reference: Condition:
Very Fine W :8 gr H :20.8 mm

1



134 Greek Coins. 4th - 1st century B.C. AE Reference: Condition:
Very Fine W :8.4 gr H :20.2 mm

1



135 Greek Coins. 4th - 1st century B.C. AE Reference: Condition:
Very Fine W :1.7 gr H :20.4 mm

1



136 Greek Coins. 4th - 1st century B.C. AE Reference: Condition:
Very Fine W :8.5 gr H :21.5 mm

1



137 Greek Coins. 4th - 1st century B.C. AE Reference: Condition:
Very Fine W :7.3 gr H :20 mm

1



138 Greek Coins. 4th - 1st century B.C. AE Reference: Condition:
Very Fine W :7.8 gr H :22 mm

1



139 Greek Coins. 4th - 1st century B.C. AE Reference: Condition:
Very Fine W :8 gr H :20.5 mm

1



140 Greek Coins. 4th - 1st century B.C. AE Reference: Condition:
Very Fine W :8 gr H :20.3 mm

1



141 Greek Coins. 4th - 1st century B.C. AE Reference: Condition:
Very Fine W :9 gr H :19.6 mm

1



142 Greek Coins. 4th - 1st century B.C. AE Reference: Condition:
Very Fine W :8.8 gr H :19.5 mm

1



143 Greek Coins. 4th - 1st century B.C. AE Reference: Condition:
Very Fine W :7.7 gr H :21.4 mm

1



144 Greek Coins. 4th - 1st century B.C. AE Reference: Condition:
Very Fine W :3.2 gr H :16.5 mm

1



145 Greek Coins. 4th - 1st century B.C. AE Reference: Condition:
Very Fine W :7.3 gr H :19.8 mm

1



146 Greek Coins. 4th - 1st century B.C. AE Reference: Condition:
Very Fine W :3.6 gr H :17 mm

1



147 Greek Coins. 4th - 1st century B.C. AE Reference: Condition:
Very Fine W :5.3 gr H :16.5 mm

1



148 Greek Coins. 4th - 1st century B.C. AE Reference: Condition:
Very Fine W :3.5 gr H :13 mm

1



149 Greek Coins. 4th - 1st century B.C. AE Reference: Condition:
Very Fine W :4.7 gr H :15 mm

1



150 Greek Coins. 4th - 1st century B.C. AE Reference: Condition:
Very Fine W :3 gr H :15 mm

1



151 Greek Coins. 4th - 1st century B.C. AE Reference: Condition:
Very Fine W :1.9 gr H :12.6 mm

1



152 Greek Coins. 4th - 1st century B.C. AE Reference: Condition:
Very Fine W :4.6 gr H :14 mm

1



153 Greek Coins. 4th - 1st century B.C. AE Reference: Condition:
Very Fine W :3.9 gr H :13.1 mm

1



154 Greek Coins. 4th - 1st century B.C. AE Reference: Condition:
Very Fine W :4.3 gr H :15.4 mm

1



155 Greek Coins. 4th - 1st century B.C. AE Reference: Condition:
Very Fine W :5.2 gr H :14.5 mm

1



156 Greek Coins. 4th - 1st century B.C. AE Reference: Condition:
Very Fine W :2 gr H :10.2 mm

1



157 Greek Coins. 4th - 1st century B.C. AE Reference: Condition:
Very Fine W :4.6 gr H :15.8 mm

1



158 Greek Coins. 4th - 1st century B.C. AE Reference: Condition:
Very Fine W :6.4 gr H :18 mm

1



159 Greek Coins. 4th - 1st century B.C. AE Reference: Condition:
Very Fine W :4.5 gr H :13.5 mm

1



160 Greek Coins. 4th - 1st century B.C. AE Reference: Condition:
Very Fine W :1.7 gr H :9.5 mm

1



161 Greek Coins. 4th - 1st century B.C. AE Reference: Condition:
Very Fine W :1.5 gr H :10.5 mm

1



162 Greek Coins. 4th - 1st century B.C. AE Reference: Condition:
Very Fine W :2.1 gr H :12.5 mm

1



163 Greek Coins. 4th - 1st century B.C. AE Reference: Condition:
Very Fine W :1.6 gr H :10 mm

1



164 Greek Coins. 4th - 1st century B.C. AE Reference: Condition:
Very Fine W :1.6 gr H :9.7 mm

1



165 Greek Coins. 4th - 1st century B.C. AE Reference: Condition:
Very Fine W :4.5 gr H :14.7 mm

1



166 Greek Coins. 4th - 1st century B.C. AE Reference: Condition:
Very Fine W :5.7 gr H :17.5 mm

1



167 Greek Coins. 4th - 1st century B.C. AE Reference: Condition:
Very Fine W :3.8 gr H :17.9 mm

1



168 Greek Coins. 4th - 1st century B.C. AE Reference: Condition:
Very Fine W :3.9 gr H :23.6 mm

1



169 Greek Coins. 4th - 1st century B.C. AE Reference: Condition:
Very Fine W :2.4 gr H :12.4 mm

1



170 Greek Coins. 4th - 1st century B.C. AE Reference: Condition:
Very Fine W :1.5 gr H :9 mm

1



171 Greek Coins. 4th - 1st century B.C. AE Reference: Condition:
Very Fine W :1.4 gr H :10.2 mm

1



172 Greek Coins. 4th - 1st century B.C. AE Reference: Condition:
Very Fine W :2.4 gr H :13.6 mm

1



173 Greek Coins. 4th - 1st century B.C. AE Reference: Condition:
Very Fine W :3.9 gr H :15 mm

1



174 Greek Coins. 4th - 1st century B.C. AE Reference: Condition:
Very Fine W :1.2 gr H :9.5 mm

1



175 Greek Coins. Seleukid Empire, 4th - 1st century B.C. AE
Reference: Condition: Very Fine W :4 gr H :18.6 mm

1



176 Greek Coins. Seleukid Empire, 4th - 1st century B.C. AE
Reference: Condition: Very Fine W :3.8 gr H :16.4 mm

1



177 Greek Coins. Seleukid Empire, 4th - 1st century B.C. AE
Reference: Condition: Very Fine W :4.3 gr H :17.3 mm

1



178 Greek Coins. Seleukid Empire, 4th - 1st century B.C. AE
Reference: Condition: Very Fine W :4.5 gr H :17.8 mm

1



179 Greek Coins. Seleukid Empire, 4th - 1st century B.C. AE
Reference: Condition: Very Fine W :4.4 gr H :15.3 mm

1



180 Greek Coins. Seleukid Empire, 4th - 1st century B.C. AE
Reference: Condition: Very Fine W :4.2 gr H :17.9 mm

1



181 Greek Coins. Seleukid Empire, 4th - 1st century B.C. AE
Reference: Condition: Very Fine W :2 gr H :11.2 mm

1



182 Greek Coins. Seleukid Empire, 4th - 1st century B.C. AE
Reference: Condition: Very Fine W :10 gr H :23.3 mm

1



183 Greek Coins. Seleukid Empire, 4th - 1st century B.C. AE
Reference: Condition: Very Fine W :8.2 gr H :19.4 mm

1



184 Greek Coins. Seleukid Empire, 4th - 1st century B.C. AE
Reference: Condition: Very Fine W :7.3 gr H :18.3 mm

1



185 Greek Coins. Seleukid Empire, 4th - 1st century B.C. AE
Reference: Condition: Very Fine W :7 gr H :19.3 mm

1



186 Greek Coins. Seleukid Empire, 4th - 1st century B.C. AE
Reference: Condition: Very Fine W :8.8 gr H :21.4 mm

1



187 Greek Coins. Seleukid Empire, 4th - 1st century B.C. AE
Reference: Condition: Very Fine W :10.8 gr H :22.5 mm

1



188 Greek Coins. Seleukid Empire, 4th - 1st century B.C. AE
Reference: Condition: Very Fine W :6.7 gr H :18.3 mm

1



189 Greek Coins. Seleukid Empire, 4th - 1st century B.C. AE
Reference: Condition: Very Fine W :7.7 gr H :19.7 mm

1



190 Greek Coins. Seleukid Empire, 4th - 1st century B.C. AE
Reference: Condition: Very Fine W :7.5 gr H :18 mm

1



191 Greek Coins. Seleukid Empire, 4th - 1st century B.C. AE
Reference: Condition: Very Fine W :4.1 gr H :14.6 mm

1



192 Greek Coins. Seleukid Empire, 4th - 1st century B.C. AE
Reference: Condition: Very Fine W :6.3 gr H :7.5 mm

1



193 Greek Coins. Seleukid Empire, 4th - 1st century B.C. AE
Reference: Condition: Very Fine W :6.9 gr H :19 mm

1



194 Greek Coins. Seleukid Empire, 4th - 1st century B.C. AE
Reference: Condition: Very Fine W :6 gr H :17.3 mm

1



195 Greek Coins. Seleukid Empire, 4th - 1st century B.C. AE
Reference: Condition: Very Fine W :6.3 gr H :19 mm

1



196 Greek Coins. Seleukid Empire, 4th - 1st century B.C. AE
Reference: Condition: Very Fine W :3 gr H :11.3 mm

1



197 Greek Coins. Seleukid Empire, 4th - 1st century B.C. AE
Reference: Condition: Very Fine W :3.9 gr H :15.5 mm

1



198 Greek Coins. Seleukid Empire, 4th - 1st century B.C. AE
Reference: Condition: Very Fine W :6 gr H :18.2 mm

1



199 Greek Coins. Seleukid Empire, 4th - 1st century B.C. AE
Reference: Condition: Very Fine W :6.8 gr H :17 mm

1



200 Greek Coins. Seleukid Empire, 4th - 1st century B.C. AE
Reference: Condition: Very Fine W :4.5 gr H :16.3 mm

1



201 Greek Coins. Seleukid Empire, 4th - 1st century B.C. AE
Reference: Condition: Very Fine W :2.1 gr H :11.2 mm

1



202 Greek Coins. Seleukid Empire, 4th - 1st century B.C. AE
Reference: Condition: Very Fine W :4.2 gr H :17 mm

1



203 Greek Coins. Seleukid Empire, 4th - 1st century B.C. AE
Reference: Condition: Very Fine W :2.8 gr H :10.6 mm

1



204 Greek Coins. Seleukid Empire, 4th - 1st century B.C. AE
Reference: Condition: Very Fine W :5 gr H :18.3 mm

1



205 Greek Coins. Seleukid Empire, 4th - 1st century B.C. AE
Reference: Condition: Very Fine W :6.7 gr H :17.4 mm

1



206 Greek Coins, 4th - 1st century B.C. AE Reference: Condition:
Very Fine W :5 gr H :17.5 mm

1



207 Greek Coins, 4th - 1st century B.C. AE Reference: Condition:
Very Fine W :3.4 gr H :14.7 mm

1



208 Greek Coins, 4th - 1st century B.C. AE Reference: Condition:
Very Fine W :3.8 gr H :16.5 mm

1



209 Greek Coins, 4th - 1st century B.C. AE Reference: Condition:
Very Fine W :3.7 gr H :17.4 mm

1



210 Greek Coins, 4th - 1st century B.C. AE Reference: Condition:
Very Fine W :4.9 gr H :16.5 mm

1



211 Greek Coins, 4th - 1st century B.C. AE Reference: Condition:
Very Fine W :6.1 gr H :18.8 mm

1



212 Greek Coins, 4th - 1st century B.C. AE Reference: Condition:
Very Fine W :3.7 gr H :15 mm

1



213 Greek Coins, 4th - 1st century B.C. AE Reference: Condition:
Very Fine W :3.9 gr H :17.4 mm

1



214 Greek Coins, 4th - 1st century B.C. AE Reference: Condition:
Very Fine W :4.7 gr H :16.8 mm

1



215 Greek Coins, 4th - 1st century B.C. AE Reference: Condition:
Very Fine W :4.3 gr H :17.2 mm

1



216 Greek Coins, 4th - 1st century B.C. AE Reference: Condition:
Very Fine W :6.6 gr H :21 mm

1



217 Greek Coins, 4th - 1st century B.C. AE Reference: Condition:
Very Fine W :2.7 gr H :16.2 mm

1



218 Greek Coins, 4th - 1st century B.C. AE Reference: Condition:
Very Fine W :3.3 gr H :14.7 mm

1



219 Greek Coins. 4th - 1st century B.C. AR Reference:
Condition: Very Fine W :3.8 gr H :17 mm

1



220 Greek Coins. 4th - 1st century B.C. AR Reference:
Condition: Very Fine W :4.2 gr H :15 mm

1



221 Greek Coins. 4th - 1st century B.C. AR Reference:
Condition: Very Fine W :4.2 gr H :18.7 mm

1



222 Roman Provincial Coins. 1st - 4th Century AD. Reference:
Condition: Very Fine W :12.5 gr H :25.3 mm

1



223 Roman Provincial Coins. 1st - 4th Century AD. Reference:
Condition: Very Fine W :11.7 gr H :23 mm

1



224 Roman Provincial Coins. 1st - 4th Century AD. Reference:
Condition: Very Fine W :11.7 gr H :28.3 mm

1



225 Roman Provincial Coins. 1st - 4th Century AD. Reference:
Condition: Very Fine W :10.5 gr H :23 mm

1



226 Roman Provincial Coins. 1st - 4th Century AD. Reference:
Condition: Very Fine W :13.1 gr H :24.2 mm

1



227 Roman Provincial Coins. 1st - 4th Century AD. Reference:
Condition: Very Fine W :14.5 gr H :23.5 mm

1



228 Roman Provincial Coins. 1st - 4th Century AD. Reference:
Condition: Very Fine W :7.7 gr H :24.6 mm

1



229 Roman Provincial Coins. 1st - 4th Century AD. Reference:
Condition: Very Fine W :5.6 gr H :20 mm

1



230 Roman Provincial Coins. 1st - 4th Century AD. Reference:
Condition: Very Fine W :8.5 gr H :24.1 mm

1



231 Roman Provincial Coins. 1st - 4th Century AD. Reference:
Condition: Very Fine W :3.2 gr H :17 mm

1



232 Roman Provincial Coins. 1st - 4th Century AD. Reference:
Condition: Very Fine W :3.3 gr H :17.5 mm

1



233 Roman Provincial Coins. 1st - 4th Century AD. Reference:
Condition: Very Fine W :3.5 gr H :17.5 mm

1



234 Roman Provincial Coins. 1st - 4th Century AD. Reference:
Condition: Very Fine W :3.3 gr H :19 mm

1



235 Roman Provincial Coins. 1st - 4th Century AD. Reference:
Condition: Very Fine W :8.2 gr H :20.4 mm

1



236 Roman Provincial Coins. 1st - 4th Century AD. Reference:
Condition: Very Fine W :15.3 gr H :24.2 mm

1



237 Roman Provincial Coins. 1st - 4th Century AD. Reference:
Condition: Very Fine W :6.1 gr H :18.3 mm

1



238 Roman Provincial Coins. 1st - 4th Century AD. Reference:
Condition: Very Fine W :4.6 gr H :18 mm

1



239 Roman Provincial Coins. 1st - 4th Century AD. Reference:
Condition: Very Fine W :5.4 gr H :18.5 mm

1



240 Roman Provincial Coins. 1st - 4th Century AD. Reference:
Condition: Very Fine W :5.6 gr H :18.5 mm

1



241 Roman Provincial Coins. 1st - 4th Century AD. Reference:
Condition: Very Fine W :5.9 gr H :19.7 mm

1



242 Roman Provincial Coins. 1st - 4th Century AD. Reference:
Condition: Very Fine W :3.3 gr H :18.7 mm

1



243 Roman Provincial Coins. 1st - 4th Century AD. Reference:
Condition: Very Fine W :6 gr H :20 mm

1



244 Roman Provincial Coins. 1st - 4th Century AD. Reference:
Condition: Very Fine W :4.9 gr H :19 mm

1



245 Roman Provincial Coins. 1st - 4th Century AD. Reference:
Condition: Very Fine W :5 gr H :15.6 mm

1



246 Roman Provincial Coins. 1st - 4th Century AD. Reference:
Condition: Very Fine W :6.3 gr H :22.2 mm

1



247 Roman Provincial Coins. 1st - 4th Century AD. Reference:
Condition: Very Fine W :6.6 gr H :23.7 mm

1



248 Roman Provincial Coins. 1st - 4th Century AD. Reference:
Condition: Very Fine W :12.4 gr H :25 mm

1



249 Roman Provincial Coins. 1st - 4th Century AD. Reference:
Condition: Very Fine W :7.6 gr H :21.4 mm

1



250 Roman Provincial Coins. 1st - 4th Century AD. Reference:
Condition: Very Fine W :4.7 gr H :18.4 mm

1



251 Roman Provincial Coins. 1st - 4th Century AD. Reference:
Condition: Very Fine W :4.2 gr H :15.8 mm

1



252 Roman Provincial Coins. 1st - 4th Century AD. Reference:
Condition: Very Fine W :3 gr H :18 mm

1



253 Roman Provincial Coins. 1st - 4th Century AD. Reference:
Condition: Very Fine W :2.8 gr H :16 mm

1



254 Roman Provincial Coins. 1st - 4th Century AD. Reference:
Condition: Very Fine W :9.6 gr H :26 mm

1



255 Roman Provincial Coins. 1st - 4th Century AD. Reference:
Condition: Very Fine W :6.3 gr H :23.6 mm

1



256 Roman Provincial Coins. 1st - 4th Century AD. Reference:
Condition: Very Fine W :8.6 gr H :22.3 mm

1



257 Roman Provincial Coins. 1st - 4th Century AD. Reference:
Condition: Very Fine W :4.8 gr H :19.8 mm

1



258 Roman Provincial Coins. 1st - 4th Century AD. Reference:
Condition: Very Fine W :4.7 gr H :20.2 mm

1



259 Roman Provincial Coins. 1st - 4th Century AD. Reference:
Condition: Very Fine W :7.4 gr H :24.2 mm

1



260 Roman Provincial Coins. 1st - 4th Century AD. Reference:
Condition: Very Fine W :8.1 gr H :20.7 mm

1



261 Roman Provincial Coins. 1st - 4th Century AD. Reference:
Condition: Very Fine W :8.5 gr H :22.6 mm

1



262 Roman Provincial Coins. 1st - 4th Century AD. Reference:
Condition: Very Fine W :10.4 gr H :26.3 mm

1



263 Roman Provincial Coins. 1st - 4th Century AD. Reference:
Condition: Very Fine W :7 gr H :22.7 mm

1



264 Roman Provincial Coins. 1st - 4th Century AD. Reference:
Condition: Very Fine W :14.5 gr H :31.5 mm

1



265 Roman Provincial Coins. 1st - 4th Century AD. Reference:
Condition: Very Fine W :5 gr H :18.5 mm

1



266 Roman Provincial Coins. 1st - 4th Century AD. Reference:
Condition: Very Fine W :5.5 gr H :21.5 mm

1



267 Roman Provincial Coins. 1st - 4th Century AD. Reference:
Condition: Very Fine W :17.5 gr H :30.5 mm

1



268 Roman Provincial Coins. 1st - 4th Century AD. Reference:
Condition: Very Fine W :9.4 gr H :22.6 mm

1



269 Roman Provincial Coins. 1st - 4th Century AD. Reference:
Condition: Very Fine W :9.7 gr H :25.7 mm

1



270 Roman Provincial Coins. 1st - 4th Century AD. Reference:
Condition: Very Fine W :3.9 gr H :22.6 mm

1



271 Roman Provincial Coins. Silver AR. 1st - 4th Century AD.
Reference: Condition: Very Fine W :2.5 gr H :17.8 mm

1



272 Roman Provincial Coins. Silver AR. 1st - 4th Century AD.
Reference: Condition: Very Fine W :3.6 gr H :18.7 mm

1



273 Roman Provincial Coins. Silver AR. 1st - 4th Century AD.
Reference: Condition: Very Fine W :3.4 gr H :16.7 mm

1



274 Roman Provincial Coins. Silver AR. 1st - 4th Century AD.
Reference: Condition: Very Fine W :1.4 gr H :13.5 mm

1



275 Roman Provincial Coins. Silver AR. 1st - 4th Century AD.
Reference: Condition: Very Fine W :2.2 gr H :13.5 mm

1



276 Roman Provincial Coins. Silver AR. 1st - 4th Century AD.
Reference: Condition: Very Fine W :2.1 gr H :13.7 mm

1



277 Roman Provincial Coins. Silver AR. 1st - 4th Century AD.
Reference: Condition: Very Fine W :1.9 gr H :14 mm

1



278 Roman Provincial Coins. Silver AR. 1st - 4th Century AD.
Reference: Condition: Very Fine W :1.9 gr H :14.8 mm

1



279 Roman Provincial Coins. Silver AR. 1st - 4th Century AD.
Reference: Condition: Very Fine W :1.8 gr H :15.2 mm

1



280 Roman Provincial Coins. Silver AR. 1st - 4th Century AD.
Reference: Condition: Very Fine W :2 gr H :13.6 mm

1



281 Roman Provincial Coins. 1st - 4th Century AD. Ae.
Reference: Condition: Very Fine W :7.8 gr H :21.5 mm

1



282 Roman Provincial Coins. 1st - 4th Century AD. Ae.
Reference: Condition: Very Fine W :7 gr H :19.5 mm

1



283 Roman Provincial Coins. 1st - 4th Century AD. Ae.
Reference: Condition: Very Fine W :5 gr H :16.5 mm

1



284 Roman Provincial Coins. 1st - 4th Century AD. Ae.
Reference: Condition: Very Fine W :4.5 gr H :19 mm

1



285 Roman Provincial Coins. 1st - 4th Century AD. Ae.
Reference: Condition: Very Fine W :3.3 gr H :14.8 mm

1



286 Roman Provincial Coins. 1st - 4th Century AD. Ae.
Reference: Condition: Very Fine W :3.6 gr H :15.5 mm

1



287 Roman Provincial Coins. 1st - 4th Century AD. Ae.
Reference: Condition: Very Fine W :3.3 gr H :16 mm

1



288 Roman Provincial Coins. 1st - 4th Century AD. Ae.
Reference: Condition: Very Fine W :2.8 gr H :15.5 mm

1



289 Roman Provincial Coins. 1st - 4th Century AD. Ae.
Reference: Condition: Very Fine W :6.2 gr H :23.8 mm

1



290 Roman Provincial Coins. 1st - 4th Century AD. Ae.
Reference: Condition: Very Fine W :4.2 gr H :17.6 mm

1



291 Roman Provincial Coins. 1st - 4th Century AD. Ae.
Reference: Condition: Very Fine W :5.6 gr H :19.8 mm

1



292 Roman Provincial Coins. 1st - 4th Century AD. Ae.
Reference: Condition: Very Fine W :4.4 gr H :17.5 mm

1



293 Roman Provincial Coins. 1st - 4th Century AD. Ae.
Reference: Condition: Very Fine W :2.2 gr H :14.6 mm

1



294 Roman Provincial Coins. 1st - 4th Century AD. Ae.
Reference: Condition: Very Fine W :9.5 gr H :25.7 mm

1



295 Roman Provincial Coins. 1st - 4th Century AD. Ae.
Reference: Condition: Very Fine W :7.9 gr H :17.9 mm

1



296 Roman Provincial Coins. 1st - 4th Century AD. Ae.
Reference: Condition: Very Fine W :6.4 gr H :24.7 mm

1



297 Roman Provincial Coins. 1st - 4th Century AD. Ae.
Reference: Condition: Very Fine W :8 gr H :21.6 mm

1



298 Roman Provincial Coins. 1st - 4th Century AD. Ae.
Reference: Condition: Very Fine W :2.5 gr H :14 mm

1



299 Roman Provincial Coins. 1st - 4th Century AD. Ae.
Reference: Condition: Very Fine W :2.7 gr H :17.5 mm

1



300 Roman Provincial Coins. 1st - 4th Century AD. Ae.
Reference: Condition: Very Fine W :4.4 gr H :20 mm

1



301 Roman Provincial Coins. 1st - 4th Century AD. Ae.
Reference: Condition: Very Fine W :3.1 gr H :15.4 mm

1



302 Roman Provincial Coins. 1st - 4th Century AD. Ae.
Reference: Condition: Very Fine W :10.8 gr H :28.6 mm

1



303 Hadrian. A.D. 117-138. AE sestertius Reference: Condition:
Very Fine W : H :

1



304 Lucius Verus, 161 – 169 AD. Sestertius. IMP CAES L AVREL VEVVS AVG Laureate head r. Rev. CONCORD AVGVSTOR TR P II S – C M. Aurelius and L. Verus clasping hands; M. Aurelius holds a scroll. In exergue, COS II. C 161. BMC 1023 var. Condition: Very Fine W : H :

1



305 Antoninus Pius , 138 – 161. AD. Sestertius Reference: Condition: Very Fine W : H :

1



306 PHILIP I. 244-249 AD. Æ Sestertius Reference: Condition: Very Fine W : H :

1



307 Aelius. Caesar, A.D. 136-138. AE sestertius Reference: Condition: Very Fine W : H :

1



308 Severus Alexander. A.D. 222-235. AE sestertius Reference: Condition: Very Fine W : H :

1



309 Septimius Severus. A.D. 193-211. AR denarius Reference: Condition: Very Fine W :3.4 gr H :18.6 mm

1



310 Septimius Severus. A.D. 193-211. AR denarius Reference: Condition: Very Fine W :4.1 gr H :16.5 mm

1



311 Septimius Severus. A.D. 193-211. AR denarius Reference:
Condition: Very Fine W :2.1 gr H :15.5 mm

1



312 Septimius Severus. A.D. 193-211. AR denarius Reference:
Condition: Very Fine W :3.1 gr H :16.5 mm

1



313 Vespasian. A.D. 69-79. AR denarius Reference: Condition:
Very Fine W :3.5 gr H :18 mm

1



314 Vespasian. A.D. 69-79. AR denarius Reference: Condition:
Very Fine W :3.4 gr H :18.4 mm

1



315 Nerva. A.D. 96-98. AR denarius Reference: Condition: Very
Fine W :3.7 gr H :18 mm

1



316 Geta. As Caesar, A.D. 198-209. AR denarius Reference:
Condition: Very Fine W :3.6 gr H :18.5 mm

1



317 Septimius Severus. A.D. 193-211. AR denarius Reference:
Condition: Very Fine W :3.7 gr H :18.4 mm

1



318 Gordian III. A.D. 238-244. AR antoninianus Reference:
Condition: Very Fine W :2.8 gr H :20.5 mm

1



319 Severina. Augusta, A.D. 270-275. AE antoninianus
Reference: Condition: Very Fine W :4.2 gr H :24 mm

1



320 Severina. Augusta, A.D. 270-275. AE antoninianus
Reference: Condition: Very Fine W :5.1 gr H :20.5 gr

1



321 Salonina. Augusta, A.D. 254-268. AR antoninianus
Reference: Condition: Very Fine W :3.7 gr H :19.5 mm

1



322 Salonina. Augusta, A.D. 254-268. AR antoninianus
Reference: Condition: Very Fine W :4.4 gr H :21.7 mm

1



323 Salonina. Augusta, A.D. 254-268. AR antoninianus
Reference: Condition: Very Fine W :4.1 gr H :21 mm

1



324 Valerian II. Caesar, A.D. 253-255. Antoninianus Reference:
Condition: Very Fine W :4.5 gr H :20 mm

1



325 Valerian II. Caesar, A.D. 253-255. Antoninianus Reference:
Condition: Very Fine W :3.1 gr H :21.5 mm

1



326 Valerian I. A.D. 253-260. AE antoninianus Reference:
Condition: Very Fine W :3 gr H :21.8 mm

1



327 Valerian I. A.D. 253-260. AE antoninianus Reference:
Condition: Very Fine W :3.1 gr H :20.4 mm

1



328 Gallienus. A.D. 253-268. AE antoninianus Reference:
Condition: Very Fine W :3.8 gr H :21.6 mm

1



329 Gallienus. A.D. 253-268. AE antoninianus Reference:
Condition: Very Fine W :4.1 gr H :20.5 mm

1



330 Numerian. As Caesar, A.D. 282-283. AE antoninianus
Reference: Condition: Very Fine W :3.8 gr H :20.3 mm

1



331 Numerian. As Caesar, A.D. 282-283. AE antoninianus
Reference: Condition: Very Fine W :5.4 gr H :20.3 mm

1



332 Maximianus. A.D. 286-305. Antoninianus Reference:
Condition: Very Fine W :3 gr H :21.3 mm

1



333 Carinus. A.D. 283-285. Antoninianus Reference: Condition:
Very Fine W :4.6 gr H :21.3 mm

1



334 Carinus. A.D. 283-285. Antoninianus Reference: Condition:
Very Fine W :4.9 gr H :19.8 mm

1



335 Carinus. A.D. 283-285. Antoninianus Reference: Condition:
Very Fine W :3.6 gr H :22.3 mm

1



336 Vaballathus and Aurelian. Usurper, A.D. 268-272 - Emperor
A.D. 270-275. BI antoninianus Reference: Condition: Very Fine W
:3.8 gr H :20.6 mm

1



337 Aurelian. A.D. 270-275. AE antoninianus Reference:
Condition: Very Fine W :4.6 gr H :21.5 mm

1



338 Aurelian. A.D. 270-275. AE antoninianus Reference:
Condition: Very Fine W :4 gr H :22 mm

1



339 Aurelian. A.D. 270-275. AE antoninianus Reference:
Condition: Very Fine W :4.9 gr H :22.3 mm

1



340 Aurelian. A.D. 270-275. AE antoninianus Reference:
Condition: Very Fine W :3.7 gr H :24 mm

1



341 Aurelian. A.D. 270-275. AE antoninianus Reference:
Condition: Very Fine W :5.2 gr H :25 mm

1



342 Aurelian. A.D. 270-275. AE antoninianus Reference:
Condition: Very Fine W :4 gr H :22 mm

1



343 Aurelian. A.D. 270-275. AE antoninianus Reference:
Condition: Very Fine W :3.7 gr H :21 mm

1



344 Aurelian. A.D. 270-275. AE antoninianus Reference:
Condition: Very Fine W :3.7 gr H :20 mm

1



345 Probus. A.D. 276-282. AE antoninianus Reference:
Condition: Very Fine W :4 gr H :21.7 mm

1



346 Probus. A.D. 276-282. AE antoninianus Reference:
Condition: Very Fine W :3.3 gr H :19.7 mm

1



347 Probus. A.D. 276-282. AE antoninianus Reference:
Condition: Very Fine W :4.1 gr H :21.1 mm

1



348 Probus. A.D. 276-282. AE antoninianus Reference:
Condition: Very Fine W :4.3 gr H :21.6 mm

1



349 Probus. A.D. 276-282. AE antoninianus Reference:
Condition: Very Fine W :2.8 gr H :20.8 mm

1



350 Probus. A.D. 276-282. AE antoninianus Reference:
Condition: Very Fine W :4.5 gr H :21.2 mm

1



351 Probus. A.D. 276-282. AE antoninianus Reference:
Condition: Very Fine W :3.9 gr H :21.8 mm

1



352 Diocletian. A.D. 284-305. antoninianus Reference:
Condition: Very Fine W :4.3 gr H :21.2 mm

1



353 Diocletian. A.D. 284-305. antoninianus Reference:
Condition: Very Fine W :3.7 gr H :20.6 mm

1



354 Diocletian. A.D. 284-305. antoninianus Reference:
Condition: Very Fine W :3.5 gr H :20.2 mm

1



355 Diocletian. A.D. 284-305. antoninianus Reference:
Condition: Very Fine W :2.7 gr H :21.7 mm

1



356 Diocletian. A.D. 284-305. antoninianus Reference:
Condition: Very Fine W :3.8 gr H :19 mm

1



357 Diocletian. A.D. 284-305. antoninianus Reference:
Condition: Very Fine W :4 gr H :20.4 mm

1



358 Diocletian. A.D. 284-305. antoninianus Reference:
Condition: Very Fine W :3.3 gr H :20.4 mm

1



359 Diocletian. A.D. 284-305. antoninianus Reference:
Condition: Very Fine W :3.1 gr H :21.9 mm

1



360 Diocletian. A.D. 284-305. antoninianus Reference:
Condition: Very Fine W :3.4 gr H :19.5 mm

1



361 Diocletian. A.D. 284-305. antoninianus Reference:
Condition: Very Fine W :3.9 gr H :20 mm

1



362 Diocletian. A.D. 284-305. antoninianus Reference:
Condition: Very Fine W :3.4 gr H :20.2 mm

1



363 Gallienus. A.D. 253-268. AE antoninianus Reference:
Condition: Very Fine W :3.5 gr H :20.7 mm

1



364 Gallienus. A.D. 253-268. AE antoninianus Reference:
Condition: Very Fine W :4 gr H :18.3 mm

1



365 Gallienus. A.D. 253-268. AE antoninianus Reference:
Condition: Very Fine W :4.8 gr H :19 mm

1



366 Gallienus. A.D. 253-268. AE antoninianus Reference:
Condition: Very Fine W :3.8 gr H :19.7 mm

1



367 Gallienus. A.D. 253-268. AE antoninianus Reference:
Condition: Very Fine W :3.4 gr H :21 mm

1



368 Gallienus. A.D. 253-268. AE antoninianus Reference:
Condition: Very Fine W :4.1 gr H :19.8 mm

1



369 Gallienus. A.D. 253-268. AE antoninianus Reference:
Condition: Very Fine W :3.3 gr H :20 mm

1



370 Gallienus. A.D. 253-268. AE antoninianus Reference:
Condition: Very Fine W :4.4 gr H :20.9 mm

1



371 Gallienus. A.D. 253-268. AE antoninianus Reference:
Condition: Very Fine W :3.4 gr H :21.6 mm

1



372 Gallienus. A.D. 253-268. AE antoninianus Reference:
Condition: Very Fine W :4.1 gr H :22.5 mm

1



373 Claudius II "Gothicus". A.D. 268-270. Antoninianus
Reference: Condition: Very Fine W :2.7 gr H :19.6 mm

1



374 Claudius II "Gothicus". A.D. 268-270. Antoninianus
Reference: Condition: Very Fine W :3.8 gr H :22 mm

1



375 Claudius II "Gothicus". A.D. 268-270. Antoninianus
Reference: Condition: Very Fine W :3 gr H :18.6 mm

1



376 Claudius II "Gothicus". A.D. 268-270. Antoninianus
Reference: Condition: Very Fine W :3.1 gr H :16 mm

1



377 Maximianus. A.D. 286-305. Antoninianus Reference:
Condition: Very Fine W :3.4 gr H :19.9 mm

1



378 Maximianus. A.D. 286-305. Antoninianus Reference:
Condition: Very Fine W :3.4 gr H :20.5 mm

1



379 Maximianus. A.D. 286-305. Antoninianus Reference:
Condition: Very Fine W :4.2 gr H :21.6 mm

1



380 Maximianus. A.D. 286-305. Antoninianus Reference:
Condition: Very Fine W :3.3 gr H :19.5 mm

1



381 Maximianus. A.D. 286-305. Antoninianus Reference:
Condition: Very Fine W :3.7 gr H :21.5 mm

1



382 Maximianus. A.D. 286-305. Antoninianus Reference:
Condition: Very Fine W :3.5 gr H :22 mm

1



383 Maximianus. A.D. 286-305. Antoninianus Reference:
Condition: Very Fine W :3.3 gr H :22 mm

1



384 Maximianus. A.D. 286-305. Antoninianus Reference:
Condition: Very Fine W :3.1 gr H :19.5 mm

1



385 Maximianus. A.D. 286-305. Antoninianus Reference:
Condition: Very Fine W :3 gr H :19.7 mm

1



386 Maximianus. A.D. 286-305. Antoninianus Reference:
Condition: Very Fine W :3.8 gr H :22 mm

1



387 Aurelian. A.D. 270-275. AE antoninianus Reference:
Condition: Very Fine W :4.4 gr H :22 mm

1



388 Diocletian. A.D. 284-305. antoninianus Reference:
Condition: Very Fine W :4 gr H :20 mm

1



389 Probus. A.D. 276-282. AE antoninianus Reference:
Condition: Very Fine W :4 gr H :20.3 mm

1



390 Severus II. As Caesar, A.D. 305-306. AE follis Reference:
Condition: Very Fine W :9.4 gr H :26.5 mm

1



391 Diocletian. A.D. 284-305. Follis Reference: Condition: Very
Fine W :17.7 gr H :25.5 mm

1



392 Diocletian. A.D. 284-305. Follis Reference: Condition: Very
Fine W :9.4 gr H :25.5 mm

1



393 Maximianus. A.D. 286-305. Ae Follis Reference: Condition:
Very Fine W :9.8 gr H :28.3 mm

1



394 Maximianus. A.D. 286-305. Ae Follis Reference: Condition:
Very Fine W :8.1 gr H :28.6 mm

1



395 Maximianus. A.D. 286-305. Ae Follis Reference: Condition: Very Fine W :6.1 gr H :24 mm

1



396 Maximinus II Daza. A.D. 305-308. AE follis Reference: Condition: Very Fine W :5.7 gr H :27 mm

1



397 Maximianus. A.D. 286-305. Ae Sestertius Reference: Condition: Very Fine W :16.8 gr H :28.5 mm

1



398 Antoninus Pius. A.D. 138-161. AE sestertius Reference: Condition: Very Fine W :22.9 gr H :31.4 mm

1



399 Julia Mamaea. Augusta, A.D. 222-235. AE sestertius Reference: Condition: Very Fine W :22.7 gr H :32.6 mm

1



400 Imperial Coins. Ar. Reference: Condition: Very Fine W :2.8 gr H :16 mm

1



401 Julia Domna. Augusta, A.D. 193-217. AR denarius Reference: Condition: Very Fine W :2.6 gr H :16.6 mm

1



402 Constantius I. As Caesar, A.D. 293-305. Æ antoninianus
Reference: Condition: Very Fine W :2.2 gr H :21.5 mm

1



403 Constantius I. As Caesar, A.D. 293-305. Æ antoninianus
Reference: Condition: Very Fine W :2.3 gr H :21.8 mm

1



404 Constantine I. A.D. 307/10-337. AE Reference: Condition:
Very Fine W :3 gr H :18 mm

1



405 Constantine I. A.D. 307/10-337. AE Reference: Condition:
Very Fine W :3 gr H :18.7 mm

1



406 Constantine I. A.D. 307/10-337. AE Reference: Condition:
Very Fine W :3 gr H :20 mm

1



407 Constantine I. A.D. 307/10-337. AE Reference: Condition:
Very Fine W :5.5 gr H :20.9 mm

1



408 Constantine I. A.D. 307/10-337. AE Reference: Condition:
Very Fine W :2.5 gr H :16.7 mm

1



409 Constantine I. A.D. 307/10-337. AE Reference: Condition:
Very Fine W :1.9 gr H :17.7 mm

1



410 Constantine I. A.D. 307/10-337. AE Reference: Condition:
Very Fine W :2.5 gr H :18.4 mm

1



411 Constantine I. A.D. 307/10-337. AE Reference: Condition:
Very Fine W :1.8 gr H :16.1 mm

1



412 Constantine I. A.D. 307/10-337. AE Reference: Condition:
Very Fine W :3.2 gr H :20 mm

1



413 Constantine I. A.D. 307/10-337. AE Reference: Condition:
Very Fine W :1.4 gr H :16.9 mm

1



414 Constantine I. A.D. 307/10-337. AE Reference: Condition:
Very Fine W :2.6 gr H :18 mm

1



415 Constantine I. A.D. 307/10-337. AE Reference: Condition:
Very Fine W :4.4 gr H :20 mm

1



416 Constantine I. A.D. 307/10-337. AE Reference: Condition:
Very Fine W :3.1 gr H :19.7 mm

1



417 Constantine I. A.D. 307/10-337. AE Reference: Condition:
Very Fine W :2.1 gr H :17.5 mm

1



418 Constantine I. A.D. 307/10-337. AE Reference: Condition:
Very Fine W :2.5 gr H :18.7 mm

1



419 Constantine I. A.D. 307/10-337. AE Reference: Condition:
Very Fine W :2.5 gr H :17 mm

1



420 Constantine I. A.D. 307/10-337. AE Reference: Condition:
Very Fine W :3 gr H :19 mm

1



421 Constantine I. A.D. 307/10-337. AE Reference: Condition:
Very Fine W :2.8 gr H :17 mm

1



422 Constantine I. A.D. 307/10-337. AE Reference: Condition:
Very Fine W :2.9 gr H :21.4 mm

1



423 Constantine I. A.D. 307/10-337. AE Reference: Condition:
Very Fine W :3.6 gr H :19 mm

1



424 Constantine I. A.D. 307/10-337. AE Reference: Condition:
Very Fine W :17.1 gr H :2.6 mm

1



425 Constantine I. A.D. 307/10-337. AE Reference: Condition:
Very Fine W :2.6 gr H :19.9 mm

1



426 Constantine I. A.D. 307/10-337. AE Reference: Condition:
Very Fine W :2.9 gr H :18.6 mm

1



427 Constantius II. A.D. 337-361. AE Reference: Condition: Very
Fine W :3.1 gr H :16 mm

1



428 Constantius II. A.D. 337-361. AE Reference: Condition: Very
Fine W :2 gr H :14.5 mm

1



429 Constantius II. A.D. 337-361. AE Reference: Condition: Very
Fine W :1.7 gr H :15 mm

1



430 Constantius II. A.D. 337-361. AE Reference: Condition: Very Fine W :2.9 gr H :17.3 mm

1



431 Constantius II. A.D. 337-361. AE Reference: Condition: Very Fine W :2.6 gr H :16.2 mm

1



432 Constantius II. A.D. 337-361. AE Reference: Condition: Very Fine W :1.5 gr H :15.3 mm

1



433 Constans. A.D. 337-350. AE Reference: Condition: Very Fine W :1.4 gr H :15.3 mm

1



434 Constans. A.D. 337-350. AE Reference: Condition: Very Fine W :1.4 gr H :16.6 mm

1



435 Constantius II. A.D. 337-361. AE Reference: Condition: Very Fine W :2.5 gr H :17.4 mm

1



436 Constantius II. A.D. 337-361. AE Reference: Condition: Very Fine W :3.2 gr H :19 mm

1



437 Constantius II. A.D. 337-361. AE Reference: Condition: Very Fine W :2.8 gr H :18 mm

1



438 Licinius I. A.D. 308-324. AE follis Reference: Condition: Very Fine W :2.7 gr H :18.5 mm

1



439 Licinius I. A.D. 308-324. AE follis Reference: Condition: Very Fine W :3.5 gr H :19.3 mm

1



440 Licinius I. A.D. 308-324. AE follis Reference: Condition: Very Fine W :3.4 gr H :17 mm

1



441 Licinius I. A.D. 308-324. AE follis Reference: Condition: Very Fine W :4.2 gr H :22.6 mm

1



442 Licinius I. A.D. 308-324. AE follis Reference: Condition: Very Fine W :2.7 gr H :18.7 mm

1



443 Licinius I. A.D. 308-324. AE follis Reference: Condition: Very Fine W :2.7 gr H :19.8 mm

1



444 Crispus. Caesar, A.D. 317-326. AE Reference: Condition: Very Fine W :2.9 gr H :19.4 mm

1



445 Crispus. Caesar, A.D. 317-326. AE Reference: Condition: Very Fine W :3.1 gr H :19.7 mm

1



446 Constantine I. A.D. 307/10-337. AE Reference: Condition: Very Fine W :2.7 gr H :15.3 mm

1



447 Valentinian II. A.D. 375-392. AE Reference: Condition: Very Fine W :2.7 gr H :16.1 mm

1



448 Claudius II, Gothicus. A.D. 268-270. AE Reference: Condition: Very Fine W :2.4 gr H :17.3 mm

1



449 Crispus. Caesar, A.D. 317-326. AE Reference: Condition: Very Fine W :2.7 gr H :17.9 mm

1



450 Constantine I. A.D. 307/10-337. AE Reference: Condition: Very Fine W :2.1 gr H :17.9 mm

1



451 Theodosius I. A.D. 379-395. AE Reference: Condition: Very Fine W :2.1 gr H :17.5 mm

1



452 Theodosius I. A.D. 379-395. AE Reference: Condition: Very Fine W :20.6 gr H :16.6 mm

1



453 Theodosius I. A.D. 379-395. AE Reference: Condition: Very Fine W :1.8 gr H :14 mm

1



454 Theodosius I. A.D. 379-395. AE Reference: Condition: Very Fine W :1.3 gr H :13.1 mm

1



455 Valentinian I. A.D. 364-375. AE Reference: Condition: Very Fine W :1.5 gr H :12 mm

1



456 Valentinian I. A.D. 364-375. AE Reference: Condition: Very Fine W :1.9 gr H :17.1 mm

1



457 Honorius. A.D. 393-423. AE Reference: Condition: Very Fine W :2 gr H :18 mm

1



458 Honorius. A.D. 393-423. AE Reference: Condition: Very Fine
W :2.5 gr H :18 mm

1



459 Honorius. A.D. 393-423. AE Reference: Condition: Very Fine
W :1.9 gr H :15.3 mm

1



460 Arcadius. A.D. 383-408. AE Reference: Condition: Very Fine
W :3.3 gr H :20.6 mm

1



461 Arcadius. A.D. 383-408. AE Reference: Condition: Very Fine
W :2 gr H :14.7 mm

1



462 Arcadius. A.D. 383-408. AE Reference: Condition: Very Fine
W :1.8 gr H :15 mm

1



463 Arcadius. A.D. 383-408. AE Reference: Condition: Very Fine
W :1.2 gr H :13 mm

1



464 Theodosius II. A.D. 402-450. AE Reference: Condition: Very Fine
W :1.2 gr H :10.6 mm

1



465 Theodosius II. A.D. 402-450. AE Reference: Condition: Very Fine W :0.9 gr H :10 mm

1



466 Theodosius II. A.D. 402-450. AE Reference: Condition: Very Fine W :2.1 gr H :15 mm

1



467 Julian II. A.D. 360-363. AE follis Reference: Condition: Very Fine W :2.4 gr H :15.5 mm

1



468 Aelia Eudoxia. Augusta, A.D. 400-404. AE Reference: Condition: Very Fine W :2.7 gr H :17 mm

1



469 Anonymous Pagan Issues. Ca. A.D. 305-313. AE Reference: Condition: Very Fine W : H :

1



470 Ekdikoi of Hagia Sophia. Circa 11th Century AD. Lead Seal - + [U]PERAGIA QEOTOKE ROHQEI, the Virgin standing on left and Justinian standing at right, holding between them a model of the church of Hagia Sophia, the large dome on three arches surmounted by a cross of four pellets; in the field above and below the building, vertical inscription: H/A/G/I/A C/O/F/I/A; C F across field / + TOIC QE/OCERCETA(sic)/TOIC PREC/RVTEPOIC/KAI EKKLH/CEKDIK in six lines. Zacos and Veglery 62. Condition: Very Fine W : 103 gr H :53 mm

1



471 Byzantine Lead Seals Reference: Condition: Very Fine W
:28.4 gr H :32 mm

1



472 Byzantine Lead Seals Reference: Condition: Very Fine W
:25.2 gr H :32 mm

1



473 Byzantine Lead Seals Reference: Condition: Very Fine W
:9.5 gr H :18.3 mm

1



474 Byzantine Lead Seals Reference: Condition: Very Fine W
:12.3 gr H :23.5 mm

1



475 Byzantine Lead Seals Reference: Condition: Very Fine W
:15.8 gr H :21.7 mm

1



476 Byzantine Lead Seals Reference: Condition: Very Fine W
:7.3 gr H :20.4 mm

1



477 Byzantine Lead Seals Reference: Condition: Very Fine W :13
gr H :25.4 mm

1



478 Byzantine Lead Seals Reference: Condition: Very Fine W :15.7 gr H :28.8 mm

1



479 Byzantine Lead Seals Reference: Condition: Very Fine W :7 gr H :32.4 mm

1



480 Byzantine Terracotta Seals Reference: Condition: Very Fine W :4.6 gr H :22.6 mm

1



481 Byzantine Terracotta Seals Reference: Condition: Very Fine W :12 mm H :30 mm

1



482 Byzantine Weight Reference: Condition: Very Fine W :4.5 gr H :14.5 mm

1



483 Byzantine Terracotta Seals Reference: Condition: Very Fine W :4.6 gr H :21 mm

1



484 Byzantine Terracotta Seals Reference: Condition: Very Fine
W :4.6 gr H :19.8 mm

1



485 Byzantine Coins. Circa 6th - 11th Century AD. Reference:
Condition: Very Fine W :1.5 gr H :15.9 mm

1



486 Byzantine Coins. Circa 6th - 11th Century AD. Reference:
Condition: Very Fine W :17 gr H :33 mm

1



487 Byzantine Coins. Circa 6th - 11th Century AD. Reference:
Condition: Very Fine W :18.7 gr H :37.2 mm

1



488 Byzantine Coins. Circa 6th - 11th Century AD. Reference:
Condition: Very Fine W :8.6 gr H :27 mm

1



489 Byzantine Coins. Circa 6th - 11th Century AD. Reference:
Condition: Very Fine W :16.7 gr H :31.5 mm

1



490 Byzantine Coins. Circa 6th - 11th Century AD. Reference:
Condition: Very Fine W :4 gr H :23 mm

1



491 Byzantine Coins. Circa 6th - 11th Century AD. Reference:
Condition: Very Fine W :2.3 gr H :12.7 mm

1



492 Byzantine Coins. Circa 6th - 11th Century AD. Reference:
Condition: Very Fine W :6.4 gr H :24.6 mm

1



493 Byzantine Coins. Circa 6th - 11th Century AD. Reference:
Condition: Very Fine W :18 gr H :31.7 mm

1



494 Byzantine Coins. Circa 6th - 11th Century AD. Reference:
Condition: Very Fine W :12.9 gr H :13.7 mm

1



495 Byzantine Coins. Circa 6th - 11th Century AD. Reference:
Condition: Very Fine W :17.7 gr H :30.6 mm

1



496 Byzantine Coins. Circa 6th - 11th Century AD. Reference:
Condition: Very Fine W :12.8 gr H :29.2 mm

1



497 Byzantine Coins. Circa 6th - 11th Century AD. Reference:
Condition: Very Fine W :16.8 gr H :31.7 mm

1



498 Byzantine Coins. Circa 6th - 11th Century AD. Reference:
Condition: Very Fine W :16.5 gr H :33 mm

1



499 Byzantine Coins. Circa 6th - 11th Century AD. Reference:
Condition: Very Fine W :17.2 gr H :30.9 mm

1



500 Byzantine Coins. Circa 6th - 11th Century AD. Reference:
Condition: Very Fine W :16.6 gr H :32.4 mm

1



501 Byzantine Coins. Circa 6th - 11th Century AD. Reference:
Condition: Very Fine W :9.7 gr H :27.3 mm

1



502 Byzantine Coins. Circa 6th - 11th Century AD. Reference:
Condition: Very Fine W :2.2 gr H :14.2 mm

1



503 Byzantine Coins. Circa 6th - 11th Century AD. Reference:
Condition: Very Fine W :2 gr H :12.3 mm

1



504 Byzantine Coins. Circa 6th - 11th Century AD. Reference:
Condition: Very Fine W :1.5 gr H :13.1 mm

1



505 Byzantine Coins. Circa 6th - 11th Century AD. Reference:
Condition: Very Fine W :2 gr H :16.3 mm

1



506 Byzantine Coins. Circa 6th - 11th Century AD. Reference:
Condition: Very Fine W :5.2 gr H :17.7 mm

1



507 Byzantine Coins. Circa 6th - 11th Century AD. Reference:
Condition: Very Fine W :9.7 gr H :19.2 mm

1



508 Byzantine Coins. Circa 6th - 11th Century AD. Reference:
Condition: Very Fine W :3.1 gr H :14 mm

1



509 Byzantine Coins. Circa 6th - 11th Century AD. Reference:
Condition: Very Fine W :9 gr H :27.3 m

1



510 Byzantine Coins. Circa 6th - 11th Century AD. Reference:
Condition: Very Fine W :4.7 gr H :21.9 mm

1



511 Byzantine Coins. Circa 6th - 11th Century AD. Reference:
Condition: Very Fine W :12.7 gr H :31.2 mm

1



512 Byzantine Coins. Circa 6th - 11th Century AD. Reference:
Condition: Very Fine W :7 gr H :24.7 mm

1



513 Byzantine Coins. Circa 6th - 11th Century AD. Reference:
Condition: Very Fine W :10 gr H :28.5 mm

1



514 Byzantine Coins. Circa 6th - 11th Century AD. Reference:
Condition: Very Fine W :2.3 gr H :18.7 mm

1



515 Byzantine Coins. Circa 6th - 11th Century AD. Reference:
Condition: Very Fine W :7.4 gr H :24.3 mm

1



516 Byzantine Coins. Circa 6th - 11th Century AD. Reference:
Condition: Very Fine W :14.9 gr H :29.3 mm

1



517 Byzantine Coins. Circa 6th - 11th Century AD. Reference:
Condition: Very Fine W :12.7 gr H :29 mm

1



518 Byzantine Coins. Circa 6th - 11th Century AD. Reference:
Condition: Very Fine W :10.2 gr H :31 mm

1



519 Byzantine Coins. Circa 6th - 11th Century AD. Reference:
Condition: Very Fine W :12.8 gr H :28.6 mm

1



520 Byzantine Coins. Circa 6th - 11th Century AD. Reference:
Condition: Very Fine W :10.6 gr H :30.4 mm

1



521 Byzantine Coins. Circa 6th - 11th Century AD. Reference:
Condition: Very Fine W :12 gr H :30 mm

1



522 Byzantine Coins. Circa 6th - 11th Century AD. Reference:
Condition: Very Fine W :6.2 gr H :19.3 mm

1



523 Byzantine Coins. Circa 6th - 11th Century AD. Reference:
Condition: Very Fine W :5.9 gr H :23.9 mm

1



524 Byzantine Coins. Circa 6th - 11th Century AD. Reference:
Condition: Very Fine W :5.6 gr H :23.2 mm

1



525 Byzantine Coins. Circa 6th - 11th Century AD. Reference:
Condition: Very Fine W :16.6 gr H :31.5 mm

1



526 Byzantine Coins. Circa 6th - 11th Century AD. Reference:
Condition: Very Fine W :9.8 gr H :29.6 mm

1



527 Byzantine Coins. Circa 6th - 11th Century AD. Reference:
Condition: Very Fine W :7.1 gr H :23.5 mm

1



528 Byzantine Coins. Circa 6th - 11th Century AD. Reference:
Condition: Very Fine W :5.5 gr H :22.3 mm

1



529 Byzantine Coins. Circa 6th - 11th Century AD. Reference:
Condition: Very Fine W :2.2 gr H :17 mm

1



530 Byzantine Coins. Circa 6th - 11th Century AD. Reference:
Condition: Very Fine W :10.7 gr H :28.9 mm

1



531 Byzantine Coins. Circa 6th - 11th Century AD. Reference:
Condition: Very Fine W :11 gr H :30 mm

1



532 Byzantine Coins. Circa 6th - 11th Century AD. Reference:
Condition: Very Fine W :11.1 gr H :29.8 mm

1



533 Byzantine Coins. Circa 6th - 11th Century AD. Reference:
Condition: Very Fine W :5.9 gr H :25.2 mm

1



534 Byzantine Coins. Circa 6th - 11th Century AD. Reference:
Condition: Very Fine W :10.3 gr H :31.7 mm

1



535 Byzantine Coins. Circa 6th - 11th Century AD. Reference:
Condition: Very Fine W :4.6 gr H :23 mm

1



536 Byzantine Coins. Circa 6th - 11th Century AD. Reference:
Condition: Very Fine W :4.6 gr H :22.2 mm

1



537 Byzantine Coins. Circa 6th - 11th Century AD. Reference:
Condition: Very Fine W :5.5 gr H :21.7 mm

1



538 Byzantine Coins. Circa 6th - 11th Century AD. Reference:
Condition: Very Fine W :5.5 gr H :20.5 mm

1



539 Byzantine Coins. Circa 6th - 11th Century AD. Reference:
Condition: Very Fine W :1.8 gr H :12 mm

1



540 Byzantine Coins. Circa 6th - 11th Century AD. Reference:
Condition: Very Fine W :4.6 gr H :23.9 mm

1



541 Byzantine Coins. Circa 6th - 11th Century AD. Reference:
Condition: Very Fine W :12.8 gr H :30 mm

1



542 Byzantine Coins. Circa 6th - 11th Century AD. Reference:
Condition: Very Fine W :5 gr H :22.8 mm

1



543 Byzantine Coins. Circa 6th - 11th Century AD. Reference:
Condition: Very Fine W :6.4 gr H :23.3 mm

1



544 Byzantine Coins. Circa 6th - 11th Century AD. Reference:
Condition: Very Fine W :2.8 gr H :22.2 mm

1



545 Byzantine Coins. Circa 6th - 11th Century AD. Reference:
Condition: Very Fine W :6.9 gr H :26.4 mm

1



546 Byzantine Coins. Circa 6th - 11th Century AD. Reference:
Condition: Very Fine W :11.6 gr H :29.7 mm

1



547 Byzantine Coins. Circa 6th - 11th Century AD. Reference:
Condition: Very Fine W :10.1 gr H :28.4 mm

1



548 Byzantine Coins. Circa 6th - 11th Century AD. Reference:
Condition: Very Fine W :9.8 gr H :30 mm

1



549 Byzantine Coins. Circa 6th - 11th Century AD. Reference:
Condition: Very Fine W :13.2 gr H :30.2 mm

1



550 Byzantine Coins. Circa 6th - 11th Century AD. Reference:
Condition: Very Fine W :6.2 gr H :24.2 mm

1



551 Byzantine Coins. Circa 6th - 11th Century AD. Reference:
Condition: Very Fine W :7.8 gr H :25.2 mm

1



552 Byzantine Coins. Circa 6th - 11th Century AD. Reference:
Condition: Very Fine W :8.7 gr H :28.8 mm

1



553 Byzantine Coins. Circa 6th - 11th Century AD. Reference:
Condition: Very Fine W :4.9 gr H :25 mm

1



554 Byzantine Coins. Circa 6th - 11th Century AD. Reference:
Condition: Very Fine W :3.2 gr H :22.7 mm

1



555 Byzantine Coins. Circa 6th - 11th Century AD. Reference:
Condition: Very Fine W :9.4 gr H :29.3 mm

1



556 Byzantine Coins. Circa 6th - 11th Century AD. Reference:
Condition: Very Fine W :10.8 gr H :29 mm

1



557 Byzantine Coins. Circa 6th - 11th Century AD. Reference:
Condition: Very Fine W :3.2 gr H :25 m

1



558 Byzantine Coins. Circa 6th - 11th Century AD. Reference:
Condition: Very Fine W :3.3 gr H :21.2 mm

1



559 Byzantine Coins. Circa 6th - 11th Century AD. Reference:
Condition: Very Fine W :8.1 gr H :28 mm

1



560 Byzantine Coins. Circa 6th - 11th Century AD. Reference:
Condition: Very Fine W :6.7 gr H :28.2 mm

1



561 Byzantine Coins. Circa 6th - 11th Century AD. Reference:
Condition: Very Fine W :8.9 gr H :28.3 mm

1



562 Byzantine Coins. Circa 6th - 11th Century AD. Reference:
Condition: Very Fine W :6.5 gr H :25.3 mm

1



563 Byzantine Coins. Circa 6th - 11th Century AD. Reference:
Condition: Very Fine W :6.8 gr H :24 mm

1



564 Byzantine Coins. Circa 6th - 11th Century AD. Reference:
Condition: Very Fine W :5.7 gr H :26.5 mm

1



565 Byzantine Coins. Circa 6th - 11th Century AD. Reference:
Condition: Very Fine W :8.5 gr H :27.3 mm

1



566 Byzantine Coins. Circa 6th - 11th Century AD. Reference:
Condition: Very Fine W :9.3 gr H :29 mm

1



567 Byzantine Coins. Circa 6th - 11th Century AD. Reference:
Condition: Very Fine W :9.7 gr H :27.8 mm

1



568 Byzantine Coins. Circa 6th - 11th Century AD. Reference:
Condition: Very Fine W :6.6 gr H :24.8 mm

1



569 Byzantine Coins. Circa 6th - 11th Century AD. Reference:
Condition: Very Fine W :2.4 gr H :18.6 mm

1



570 Byzantine Coins. Circa 6th - 11th Century AD. Reference:
Condition: Very Fine W :13.3 gr H :31.8 mm

1



571 Byzantine Coins. Circa 6th - 11th Century AD. Reference:
Condition: Very Fine W :9.3 gr H :27 mm

1



572 Byzantine Coins. Circa 6th - 11th Century AD. Reference:
Condition: Very Fine W :8.9 gr H :30.7 mm

1



573 Byzantine Coins. Circa 6th - 11th Century AD. Reference:
Condition: Very Fine W :2.3 gr H :21.8 mm

1



574 Crusaders Coins. Circa 11th - 13th Century AD. Reference:
Condition: Very Fine W :1.1 gr H :17.2 mm

1



575 Crusaders Coins. Circa 11th - 13th Century AD. Reference:
Condition: Very Fine W :1 gr H :17 mm

1



576 Crusaders Coins. Circa 11th - 13th Century AD. Reference:
Condition: Very Fine W :1 gr H :17.5 mm

1



577 Medieval Coins. Circa 11th - 16th Century AD. Condition:
Very Fine W :1 gr H :17.1 mm

1



578 Medieval Coins. Circa 11th - 16th Century AD. Reference:
Condition: Very Fine W :1 gr H :17 mm

1



579 Medieval Coins. Circa 11th - 16th Century AD. Reference:
Condition: Very Fine W :1 gr H :14.4 mm

1



580 Medieval Coins. Circa 11th - 16th Century AD. Reference:
Condition: Very Fine W :1 gr H :15 mm

1



581 Medieval Coins. Circa 11th - 16th Century AD. Reference:
Condition: Very Fine W :0.9 gr H :16 mm

1



582 Medieval Coins. Circa 11th - 16th Century AD. Reference:
Condition: Very Fine W :4.4 gr H :24.2 mm

1



583 Medieval Coins. Circa 11th - 16th Century AD. Reference:
Condition: Very Fine W :4 gr H :22.2 mm

1



584 Medieval Coins. Circa 11th - 16th Century AD. Reference:
Condition: Very Fine W :4.6 gr H :22.5 mm

1



585 Medieval Coins. Circa 11th - 16th Century AD. Reference:
Condition: Very Fine W :2.8 gr H :20 mm

1



586 Medieval Coins. Circa 11th - 16th Century AD. Reference:
Condition: Very Fine W :2.5 gr H :23.8 mm

1



587 Medieval Coins. Circa 11th - 16th Century AD. Reference:
Condition: Very Fine W :0.4 gr H :13.4 mm

1



588 Medieval Coins. Circa 11th - 16th Century AD. Reference:
Condition: Very Fine W :8.4 gr H :32.7 mm

1



589 Medieval Coins. Circa 11th - 16th Century AD. Reference:
Condition: Very Fine W :6.4 gr H :32.6 mm

1



590 Medieval Coins. Circa 11th - 16th Century AD. Reference:
Condition: Very Fine W :5.4 gr H :30.6 mm

1



591 Medieval Coins. Circa 11th - 16th Century AD. Reference:
Condition: Very Fine W :3.4 gr H :25 mm

1



592 Medieval Coins. Circa 11th - 16th Century AD. Reference:
Condition: Very Fine W :4 gr H :25 mm

1



593 Medieval Coins. Circa 11th - 16th Century AD. Reference:
Condition: Very Fine W :1.7 gr H :20 mm

1



594 Medieval Coins. Circa 11th - 16th Century AD. Reference:
Condition: Very Fine W :1.7 gr H :20.3 mm

1



595 Medieval Coins. Circa 11th - 16th Century AD. Reference:
Condition: Very Fine W :1 gr H :17 mm

1



596 Medieval Coins. Circa 11th - 16th Century AD. Reference:
Condition: Very Fine W :1 gr H :17.2 mm

1



597 Medieval Coins. Circa 11th - 16th Century AD. Reference:
Condition: Very Fine W :1.1 gr H :17.3 mm

1



598 Medieval Coins. Circa 11th - 16th Century AD. Reference:
Condition: Very Fine W :0.6 gr H :14 mm

1



599 Medieval Coins. Circa 11th - 16th Century AD. Reference:
Condition: Very Fine W :0.6 gr H :13.3 mm

1



600 Medieval Coins. Circa 11th - 16th Century AD. Reference:
Condition: Very Fine W :0.6 gr H :13 mm

1



601 Medieval Coins. Circa 11th - 16th Century AD. Reference:
Condition: Very Fine W :0.6 gr H :14 mm

1



602 Medieval Coins. Circa 11th - 16th Century AD. Reference:
Condition: Very Fine W :1.1 gr H :20.8 mm

1



603 Medieval Coins. Circa 11th - 16th Century AD. Reference:
Condition: Very Fine W :1.4 gr H :19.8 mm

1



604 Medieval Coins. Circa 11th - 16th Century AD. Reference:
Condition: Very Fine W :1.9 gr H :19.8 mm

1



605 Medieval Coins. Circa 11th - 16th Century AD. Reference:
Condition: Very Fine W :1.1 gr H :18.3 mm

1



606 Medieval Coins. Circa 11th - 16th Century AD. Reference:
Condition: Very Fine W :1.2 gr H :22.5 mm

1



607 Medieval Coins. Circa 11th - 16th Century AD. Reference:
Condition: Very Fine W :1 gr H :17.3 mm

1



608 Medieval Coins. Circa 11th - 16th Century AD. Reference:
Condition: Very Fine W :1.8 gr H :21.3 mm

1



609 Medieval Coins. Circa 11th - 16th Century AD. Reference:
Condition: Very Fine W :2 gr H :25.3 mm

1



610 Armenian Coins. Circa 11th - 14th Century AD. Reference:
Condition: Very Fine W :2.9 gr H :22 mm

1



611 Armenian Coins. Circa 11th - 14th Century AD. Reference:
Condition: Very Fine W :3.1 gr H :23.2 mm

1



612 Armenian Coins. Circa 11th - 14th Century AD. Reference:
Condition: Very Fine W :2.9 gr H :21.6 mm

1



613 Armenian Coins. Circa 11th - 14th Century AD. Reference:
Condition: Very Fine W :2.6 gr H :

1



614 Armenian Coins. Circa 11th - 14th Century AD. Reference:
Condition: Very Fine W : H :

1



615 Armenian Coins. Circa 11th - 14th Century AD. Reference:
Condition: Very Fine W :2.5 mm H :19 mm

1



616 Armenian Coins. Circa 11th - 14th Century AD. Reference:
Condition: Very Fine W :2.4 gr H :18.3 mm

1



617 Armenian Coins. Circa 11th - 14th Century AD. Reference:
Condition: Very Fine W :1 gr H :11.6 mm

1



618 Armenian Coins. Circa 11th - 14th Century AD. Reference:
Condition: Very Fine W :1 gr H :13.2 mm

1



619 Armenian Coins. Circa 11th - 14th Century AD. Reference:
Condition: Very Fine W :4.6 gr H :23.9 mm

1



620 Armenian Coins. Circa 11th - 14th Century AD. Reference:
Condition: Very Fine W :3.2 gr H :18.5 mm

1



621 Armenian Coins. Circa 11th - 14th Century AD. Reference:
Condition: Very Fine W :8.2 gr H :27.8 mm

1



622 Armenian Coins. Circa 11th - 14th Century AD. Reference:
Condition: Very Fine W :9.2 gr H :28.2 mm

1



623 Armenian Coins. Circa 11th - 14th Century AD. Reference:
Condition: Very Fine W :5.2 gr H :22.2 mm

1



624 Armenian Coins. Circa 11th - 14th Century AD. Reference:
Condition: Very Fine W :5.6 gr H :24.4 mm

1



625 Armenian Coins. Circa 11th - 14th Century AD. Reference:
Condition: Very Fine W :3.3 gr H :19.8 mm

1



626 Armenian Coins. Circa 11th - 14th Century AD. Reference:
Condition: Very Fine W :3.4 gr H :20 mm

1



627 Armenian Coins. Circa 11th - 14th Century AD. Reference:
Condition: Very Fine W :3.4 gr H :20.9 mm

1



628 Armenian Coins. Circa 11th - 14th Century AD. Reference:
Condition: Very Fine W :1.2 gr H :13.9 mm

1



629 Arab - Byzantine Coins Reference: Condition: Very Fine W
:8.7 gr H :27.1 mm

1



630 Arab - Byzantine Coins Reference: Condition: Very Fine W :4
gr H :22.6 mm

1



631 Arab - Byzantine Coins Reference: Condition: Very Fine W
:4.9 gr H :24.7 mm

1



632 Arab - Byzantine Coins Reference: Condition: Very Fine W
:4.1 gr H :21.2 mm

1



633 Arab - Byzantine Coins Reference: Condition: Very Fine W
:3.6 gr H :19.3 mm

1



634 Arab - Byzantine Coins Reference: Condition: Very Fine W
:2.8 gr H :23.4 mm

1



635 Arab - Byzantine Coins Reference: Condition: Very Fine W :4
gr H :19.4 mm

1



636 Arab - Byzantine Coins Reference: Condition: Very Fine W
:4.4 gr H :19.3 mm

1



637 Arab - Byzantine Coins Reference: Condition: Very Fine W
:3.7 gr H :21.3 mm

1



638 Arab - Byzantine Coins Reference: Condition: Very Fine W
:2.9 gr H :18.4 mm

1



639 Arab - Byzantine Coins Reference: Condition: Very Fine W
:4.9 gr H :23.7 gr

1



640 Arab - Byzantine Coins Reference: Condition: Very Fine W :5
gr H :25 mm

1



641 Arab - Byzantine Coins Reference: Condition: Very Fine W
:2.9 gr H :18.3 mm

1



642 Arab - Byzantine Coins Reference: Condition: Very Fine W
:2.5 gr H :19 mm

1



643 Arab - Byzantine Coins Reference: Condition: Very Fine W
:3.9 gr H :15.6 mm

1



644 Islamic Coins. Circa 7th - 14th Century AD. Reference:
Condition: Very Fine W :2.7 gr H :20.5 mm

1



645 Islamic Coins. Circa 7th - 14th Century AD. Reference:
Condition: Very Fine W :3.1 gr H :21.3 gr

1



646 Islamic Coins. Circa 7th - 14th Century AD. Reference:
Condition: Very Fine W :3.4 gr H :19 mm

1



647 Islamic Coins. Circa 7th - 14th Century AD. Reference:
Condition: Very Fine W :3.5 gr H :19 mm

1



648 Islamic Coins. Circa 7th - 14th Century AD. Reference:
Condition: Very Fine W :2.8 gr H :20.2 mm

1



649 Islamic Coins. Circa 7th - 14th Century AD. Reference:
Condition: Very Fine W :3.5 gr H :19.1 mm

1



650 Islamic Coins. Circa 7th - 14th Century AD. Reference:
Condition: Very Fine W :3.3 gr H :18.9 mm

1



651 Islamic Coins. Circa 7th - 14th Century AD. Reference:
Condition: Very Fine W :3.3 gr H :19.8 gr

1



652 Islamic Coins. Circa 7th - 14th Century AD. Reference:
Condition: Very Fine W :3 gr H :21.7 mm

1



653 Islamic Coins. Circa 7th - 14th Century AD. Reference:
Condition: Very Fine W :2.9 gr H :21.3 gr

1



654 Islamic Coins. Circa 7th - 14th Century AD. Reference:
Condition: Very Fine W :3.1 gr H :21.3 mm

1



655 Islamic Coins. Circa 7th - 14th Century AD. Reference:
Condition: Very Fine W :3.3 gr H :20.2 mm

1



656 Islamic Coins. Circa 7th - 14th Century AD. Reference:
Condition: Very Fine W :2.9 gr H :26.6 mm

1



657 Islamic Coins. Circa 7th - 14th Century AD. Reference:
Condition: Very Fine W :3.2 gr H :24.1 gr

1



658 Islamic Coins. Circa 7th - 14th Century AD. Reference:
Condition: Very Fine W :3.1 gr H :24.1 mm

1



659 Islamic Coins. Circa 7th - 14th Century AD. Reference:
Condition: Very Fine W :3.2 gr H :23.2 mm

1



660 Islamic Coins. Circa 7th - 14th Century AD. Reference:
Condition: Very Fine W :3.3 gr H :21.4 mm

1



661 Islamic Coins. Circa 7th - 14th Century AD. Reference:
Condition: Very Fine W :3.4 gr H :22.8 mm

1



662 Islamic Coins. Circa 7th - 14th Century AD. Reference:
Condition: Very Fine W :3.3 gr H :23.6 mm

1



663 Islamic Coins. Circa 7th - 14th Century AD. Reference:
Condition: Very Fine W :3.3 gr H :22 mm

1



664 Islamic Coins. Circa 7th - 14th Century AD. Reference:
Condition: Very Fine W :3.4 gr H :21.8 mm

1



665 Islamic Coins. Circa 7th - 14th Century AD. Reference:
Condition: Very Fine W :3.5 gr H :23.3 mm

1



666 Islamic Coins. Circa 7th - 14th Century AD. Reference:
Condition: Very Fine W :1.6 gr H :14.8 mm

1



667 Islamic Coins. Circa 7th - 14th Century AD. Reference:
Condition: Very Fine W :3.1 gr H :20.1 mm

1



668 Islamic Coins. Circa 7th - 14th Century AD. Reference:
Condition: Very Fine W :2.3 gr H :21.6 mm

1



669 Islamic Coins. Circa 7th - 14th Century AD. Reference:
Condition: Very Fine W :3.2 gr H :18.4 mm

1



670 Islamic Coins. Circa 7th - 14th Century AD. Reference:
Condition: Very Fine W :1.9 gr H :18 mm

1



671 Islamic Coins. Circa 7th - 14th Century AD. Reference:
Condition: Very Fine W :2.3 gr H :20.4 mm

1



672 Islamic Coins. Circa 7th - 14th Century AD. Reference:
Condition: Very Fine W :3.1 gr H :18.2 mm

1



673 Islamic Coins. Circa 7th - 14th Century AD. Reference:
Condition: Very Fine W :2.8 gr H :19.7 mm

1



674 Islamic Coins. Circa 7th - 14th Century AD. Reference:
Condition: Very Fine W :2.7 gr H :19.4 mm

1



675 Islamic Coins. Circa 7th - 14th Century AD. Reference:
Condition: Very Fine W :2.7 gr H :19.1 mm

1



676 Islamic Coins. Circa 7th - 14th Century AD. Reference:
Condition: Very Fine W :1.9 gr H :15.4 mm

1



677 Islamic Coins. Circa 7th - 14th Century AD. Reference:
Condition: Very Fine W :1.3 gr H :10 mm

1



678 Islamic Coins. Circa 7th - 14th Century AD. Reference:
Condition: Very Fine W :0.8 gr H :10.1 mm

1



679 Islamic Coins. Circa 7th - 14th Century AD. Reference:
Condition: Very Fine W :1.1 gr H :9.8 mm

1



680 Islamic Coins. Circa 7th - 14th Century AD. Reference:
Condition: Very Fine W :0.8 gr H :10.5 mm

1



681 Islamic Coins. Circa 7th - 14th Century AD. Reference:
Condition: Very Fine W :1 gr H :8.5 mm

1



682 Islamic Coins. Circa 7th - 14th Century AD. Reference:
Condition: Very Fine W :1 gr H :8.8 mm

1



683 Islamic Coins. Circa 7th - 14th Century AD. Reference:
Condition: Very Fine W :1.6 gr H :11.8 mm

1



684 Islamic Coins. Circa 7th - 14th Century AD. Reference:
Condition: Very Fine W :1.1 gr H :9.3 mm

1



685 Islamic Coins. Circa 7th - 14th Century AD. Reference:
Condition: Very Fine W :0.8 gr H :12.5 mm

1



686 Islamic Coins. Circa 7th - 14th Century AD. Reference:
Condition: Very Fine W :1.1 gr H :10.5 mm

1



687 Islamic Coins. Circa 7th - 14th Century AD. Reference:
Condition: Very Fine W :1.6 gr H :13.3 mm

1



688 Islamic Coins. Circa 7th - 14th Century AD. Reference:
Condition: Very Fine W :1.6 gr H :13.6 mm

1



689 Islamic Coins. Circa 7th - 14th Century AD. Reference:
Condition: Very Fine W :1.6 gr H :16.2 mm

1



690 Islamic Coins. Circa 7th - 14th Century AD. Reference:
Condition: Very Fine W :0.8 gr H :14.3 mm

1



691 Islamic Coins. Circa 7th - 14th Century AD. Reference:
Condition: Very Fine W :0.9 gr H :14.2 mm

1



692 Islamic Coins. Circa 7th - 14th Century AD. Reference:
Condition: Very Fine W :2 gr H :17.1 mm

1



693 Islamic Coins. Circa 7th - 14th Century AD. Reference:
Condition: Very Fine W :3.2 gr H :17.1 mm

1



694 Islamic Coins. Circa 7th - 14th Century AD. Reference:
Condition: Very Fine W :0.7 gr H :10.6 mm

1



695 Islamic Coins. Circa 7th - 14th Century AD. Reference:
Condition: Very Fine W :0.8 gr H :10 mm

1



696 Islamic Coins. Circa 7th - 14th Century AD. Reference:
Condition: Very Fine W :0.7 gr H :7 mm

1



697 Islamic Coins. Circa 7th - 14th Century AD. Reference:
Condition: Very Fine W :19.4 gr H :36.6 mm

1



698 Islamic Coins. Circa 7th - 14th Century AD. Reference:
Condition: Very Fine W :2.7 gr H :19.4 mm

1



699 Islamic Coins. Circa 7th - 14th Century AD. Reference:
Condition: Very Fine W :1.2 gr H :9 mm

1



700 Islamic Coins. Circa 7th - 14th Century AD. Reference:
Condition: Very Fine W :1.3 gr H :9.4 mm

1



701 Islamic Coins. Circa 7th - 14th Century AD. Reference:
Condition: Very Fine W :5.9 gr H :23.5 mm

1



702 Islamic Coins. Circa 7th - 14th Century AD. Reference:
Condition: Very Fine W :3 gr H :19.3 mm

1



703 Islamic Coins. Circa 7th - 14th Century AD. Reference:
Condition: Very Fine W :2.6 gr H :23.4 mm

1



704 Islamic Coins. Circa 7th - 14th Century AD. Reference:
Condition: Very Fine W :2 gr H :18.2 mm

1



705 Islamic Coins. Circa 7th - 14th Century AD. Reference:
Condition: Very Fine W :2.9 gr H :20.8 mm

1



706 Islamic Coins. Circa 7th - 14th Century AD. Reference:
Condition: Very Fine W :2.5 gr H :17.5 mm

1



707 Islamic Coins. Circa 7th - 14th Century AD. Reference:
Condition: Very Fine W :2.4 gr H :14.6 mm

1



708 Islamic Coins. Circa 7th - 14th Century AD. Reference:
Condition: Very Fine W :2.9 gr H :16 mm

1



709 Islamic Coins. Circa 7th - 14th Century AD. Reference:
Condition: Very Fine W :3.2 gr H :16.4 mm

1



710 Islamic Coins. Circa 7th - 14th Century AD. Reference:
Condition: Very Fine W :1.3 gr H :16.3 mm

1



711 Islamic Coins. Circa 7th - 14th Century AD. Reference:
Condition: Very Fine W :2.9 gr H :21.2 mm

1



712 Islamic Coins. Circa 7th - 14th Century AD. Reference:
Condition: Very Fine W :3.2 gr H :17.2 mm

1



713 Islamic Coins. Circa 7th - 14th Century AD. Reference:
Condition: Very Fine W :3.5 gr H :17.4 mm

1



714 Islamic Coins. Circa 7th - 14th Century AD. Reference:
Condition: Very Fine W :3.4 gr H :19.7 mm

1



715 Islamic Coins. Circa 7th - 14th Century AD. Reference:
Condition: Very Fine W :3.7 gr H :22.6 mm

1



716 Islamic Coins. Circa 7th - 14th Century AD. Reference:
Condition: Very Fine W :2.3 gr H :18.1 mm

1



717 Islamic Coins. Circa 7th - 14th Century AD. Reference:
Condition: Very Fine W :2.6 gr H :14.8 mm

1



718 Islamic Coins. Circa 7th - 14th Century AD. Reference:
Condition: Very Fine W :1.3 gr H :18 mm

1



719 Islamic Coins. Circa 7th - 14th Century AD. Reference:
Condition: Very Fine W :3.1 gr H :20.7 mm

1



720 Islamic Coins. Circa 7th - 14th Century AD. Reference:
Condition: Very Fine W :3.5 gr H :20.3 mm

1



721 Islamic Coins. Circa 7th - 14th Century AD. Reference:
Condition: Very Fine W :3.4 gr H :20.5 mm

1



722 Islamic Coins. Circa 7th - 14th Century AD. Reference:
Condition: Very Fine W :4.7 gr H :18.8 mm

1



723 Islamic Coins. Circa 7th - 14th Century AD. Reference:
Condition: Very Fine W :3.6 gr H :20.7 mm

1



724 Islamic Coins. Circa 7th - 14th Century AD. Reference:
Condition: Very Fine W :1.8 gr H :14.5 mm

1



725 Islamic Coins. Circa 7th - 14th Century AD. Reference:
Condition: Very Fine W :14.8 gr H :31.7 mm

1



726 Islamic Coins. Circa 7th - 14th Century AD. Reference:
Condition: Very Fine W :3.4 gr H :21.7 mm

1



727 Islamic Coins. Circa 7th - 14th Century AD. Reference:
Condition: Very Fine W :5.6 gr H :26.6 mm

1



728 Islamic Coins. Circa 7th - 14th Century AD. Reference:
Condition: Very Fine W :4.5 gr H :22.7 mm

1



729 Islamic Coins. Circa 7th - 14th Century AD. Reference:
Condition: Very Fine W :3.4 gr H :25.8 mm

1



730 Islamic Coins. Circa 7th - 14th Century AD. Reference:
Condition: Very Fine W :3.4 gr H :24.2 mm

1



731 Islamic Coins. Circa 7th - 14th Century AD. Reference:
Condition: Very Fine W :3.5 gr H :24.8 mm

1



732 Islamic Coins. Circa 7th - 14th Century AD. Reference:
Condition: Very Fine W :3.4 gr H :24.8 mm

1



733 Islamic Coins. Circa 7th - 14th Century AD. Reference:
Condition: Very Fine W :3.4 gr H :24.5 mm

1



734 Islamic Coins. Circa 7th - 14th Century AD. Reference:
Condition: Very Fine W :3.4 gr H :24.9 mm

1



735 Islamic Coins. Circa 7th - 14th Century AD. Reference:
Condition: Very Fine W :3.5 gr H :24.8 mm

1



736 Islamic Coins. Circa 7th - 14th Century AD. Reference:
Condition: Very Fine W :3.4 gr H :24.9 mm

1



737 Islamic Coins. Circa 7th - 14th Century AD. Reference:
Condition: Very Fine W :3.4 gr H :24.3 mm

1



738 Islamic Coins. Circa 7th - 14th Century AD. Reference:
Condition: Very Fine W :3.3 gr H :24.4 mm

1



739 Islamic Coins. Circa 7th - 14th Century AD. Reference:
Condition: Very Fine W :3.4 gr H :24.2 mm

1



740 Islamic Coins. Circa 7th - 14th Century AD. Reference:
Condition: Very Fine W :3.3 gr H :25.3 mm

1



741 Islamic Coins. Circa 7th - 14th Century AD. Reference:
Condition: Very Fine W :3.3 gr H :24.4 mm

1



742 Islamic Coins. Circa 7th - 14th Century AD. Reference:
Condition: Very Fine W :3.3 gr H :26.5 mm

1



743 Islamic Coins. Circa 7th - 14th Century AD. Reference:
Condition: Very Fine W :3.5 gr H :25.6 mm

1



744 Islamic Coins. Circa 7th - 14th Century AD. Reference:
Condition: Very Fine W :3.3 gr H :26 mm

1



745 Islamic Coins. Circa 7th - 14th Century AD. Reference:
Condition: Very Fine W :3.2 gr H :24 mm

1



746 Islamic Coins. Circa 7th - 14th Century AD. Reference:
Condition: Very Fine W :3.3 gr H :24.1 mm

1



747 Islamic Coins. Circa 7th - 14th Century AD. Reference:
Condition: Very Fine W :3.3 gr H :26.2 mm

1



748 Islamic Coins. Circa 7th - 14th Century AD. Reference:
Condition: Very Fine W :3.2 gr H :24.3 mm

1



749 Lots Reference: Condition: Very Fine W :lot H :

1



750 Lots Reference: Condition: Very Fine W :lot H :

1



751 Lots Reference: Condition: Very Fine W :lot H :

1



752 Lots Reference: Condition: Very Fine W :lot H :

1



753 Lots Reference: Condition: Very Fine W :lot H :

1



754 Lots Reference: Condition: Very Fine W :lot H :

1



755 Lots Reference: Condition: Very Fine W :lot H :

1



756 Lots Reference: Condition: Very Fine W :lot H :

1



757 Lots Reference: Condition: Very Fine W :lot H :

1

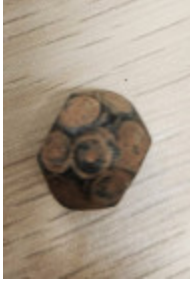


758 Collectible Items, Reference: Condition: Very Fine W :lot H :

1



759 Collectible Items, Reference: Condition: Very Fine W :lot H :
1



760 Collectible Items, Reference: Condition: Very Fine W :lot H :
1



761 Collectible Items, Reference: Condition: Very Fine W :2.8 gr
H :11.2 mm
1



762 Collectible Items, Reference: Condition: Very Fine W :3.6 gr
H :18.6 mm
1



763 Collectible Items, Reference: Condition: Very Fine W :6.2 gr
H :26.6 mm
1



764 Collectible Items, Reference: Condition: Very Fine W :2.2 gr
H :28.1 mm
1



765 Collectible Items, Reference: Condition: Very Fine W :4.3 gr
H :21.8 mm

1



766 Collectible Items, Reference: Condition: Very Fine W :3.2 gr
H :22.1 mm

1



767 Collectible Items, Reference: Condition: Very Fine W :2.3 gr
H :23.6 mm

1



768 Collectible Items, Reference: Condition: Very Fine W :3.9 gr
H :20.5 mm

1



769 Collectible Items, Reference: Condition: Very Fine W :0.9 gr
H :18.7 mm

1



770 Collectible Items, Reference: Condition: Very Fine W :6.2 gr
H :22.4 mm

1



771 Collectible Items, Reference: Condition: Very Fine W :2.2 gr
H :18.2 mm

1



772 Collectible Items, Reference: Condition: Very Fine W :2.5 gr
H :19.6 mm

1



773 Collectible Items, Reference: Condition: Very Fine W :8.6 gr
H :29.2 mm

1



774 Collectible Items, Reference: Condition: Very Fine W :5.9 gr
H :21 mm

1



775 Collectible Items, Reference: Condition: Very Fine W :5.2 gr
H :19 mm

1



776 Collectible Items, Reference: Condition: Very Fine W :6.2 gr
H :22.2 mm

1



777 Collectible Items, Reference: Condition: Very Fine W :4.2 gr
H :23 mm

1



778 Collectible Items, Reference: Condition: Very Fine W :6 gr H
:26.5 mm

1



779 Collectible Items, Reference: Condition: Very Fine W :2.8 gr
H :21.6 mm

1



780 Collectible Items, Reference: Condition: Very Fine W :0.6 gr
H :16.3 mm

1



781 Collectible Items, Reference: Condition: Very Fine W :1.9 gr
H :20 mm

1



782 Collectible Items, Reference: Condition: Very Fine W :0.7 gr
H :20 mm

1



783 Collectible Items, Reference: Condition: Very Fine W :6.3 gr
H :23 mm

1



784 Collectible Items, Reference: Condition: Very Fine W :6 gr H
:22.5 mm

1



785 Collectible Items, Reference: Condition: Very Fine W :4.9 gr
H :21.5 mm

1



786 Collectible Items, Reference: Condition: Very Fine W :2.7 gr
H :20.5 mm

1



787 Collectible Items, Reference: Condition: Very Fine W :4.8 gr
H :21 mm

1



788 Collectible Items, Reference: Condition: Very Fine W :1.1 gr
H :11 mm

1



789 Collectible Items, Reference: Condition: Very Fine W :5.7 gr
H :23.4 mm

1



790 Collectible Items, Reference: Condition: Very Fine W :2.4 gr
H :21.5 mm

1



791 Collectible Items, Reference: Condition: Very Fine W :2.8 gr
H :22mm

1



792 Collectible Items, Reference: Condition: Very Fine W :1.9 gr
H :22.8 mm

1



793 Collectible Items, Reference: Condition: Very Fine W :2.6 gr
H :21.8 mm

1



794 Collectible Items, Reference: Condition: Very Fine W :3.4 gr
H :17.5 mm

1



795 Collectible Items, Reference: Condition: Very Fine W :1.6 gr
H :18.6 mm

1



796 Collectible Items, Reference: Condition: Very Fine W :2 gr H
:18 mm

1



797 Collectible Items, Reference: Condition: Very Fine W :2.2 gr
H :22.4 mm

1



798 Collectible Items, Reference: Condition: Very Fine W :1.7 gr
H :23.5 mm

1



799 Collectible Items, Reference: Condition: Very Fine W :3.7 gr
H :23 mm

1



800 Collectible Items, Reference: Condition: Very Fine W :2.8 gr
H :20.7 mm

1



801 Collectible Items, Reference: Condition: Very Fine W :3.5 gr
H :25.2 mm

1



802 Collectible Items, Reference: Condition: Very Fine W :3.9 gr
H :21.6 mm

1



803 Collectible Items, Reference: Condition: Very Fine W :5.5 gr
H :24.7 mm

1



804 Collectible Items, Reference: Condition: Very Fine W :7.3 gr
H :22.7 mm

1



805 Collectible Items, Reference: Condition: Very Fine W :4.1 gr
H :21.1 mm

1



806 Collectible Items, Reference: Condition: Very Fine W :4.6 gr
H :22.9 mm

1



807 Collectible Items, Reference: Condition: Very Fine W :2.2 gr
H :18 mm

1



808 Collectible Items, Reference: Condition: Very Fine W :1.2 gr
H :17mm

1



809 Collectible Items, Reference: Condition: Very Fine W :3.6 gr
H :19.5 mm

1



810 Collectible Items, Reference: Condition: Very Fine W :0.5 gr
H :14.5 mm

1



811 Collectible Items, Reference: Condition: Very Fine W :2.4 gr
H :21 mm

1



812 Collectible Items, Reference: Condition: Very Fine W :3.3 gr
H :19 mm

1



813 Collectible Items, Reference: Condition: Very Fine W :5.6 gr
H :24 mm

1



814 Collectible Items, Reference: Condition: Very Fine W :3.3 gr
H :18.7 mm

1



815 Collectible Items, Reference: Condition: Very Fine W :3.4 gr
H :20.3 mm

1



816 Collectible Items, Reference: Condition: Very Fine W :2.9 gr
H :18.7 mm

1



817 Collectible Items, Reference: Condition: Very Fine W :3.4 gr
H :21.7 mm

1



818 Collectible Items, Reference: Condition: Very Fine W :2.9 gr
H :21.7 mm

1



819 Collectible Items, Reference: Condition: Very Fine W :5.3 gr
H :25.5 mm

1



820 Collectible Items, Reference: Condition: Very Fine W :5 gr H
:22 mm

1



821 Collectible Items, Reference: Condition: Very Fine W :4.7 gr
H :22 mm

1



822 Collectible Items, Reference: Condition: Very Fine W :3.1 gr
H :23.7 mm

1



823 Collectible Items, Reference: Condition: Very Fine W :43.6
gr H :37 mm

1



824 Collectible Items, Reference: Condition: Very Fine W :8.2 gr
H :32.3 mm

1



825 Collectible Items, Reference: Condition: Very Fine W :10.8gr
H :30.8 mm

1



826 Collectible Items, Reference: Condition: Very Fine W :3.2 gr
H :19.7 mm

1



827 Collectible Items, Reference: Condition: Very Fine W :14.5
gr H :36.5 mm

1



828 Collectible Items, Reference: Condition: Very Fine W :7.1 gr
H :33 mm

1



829 Collectible Items, Reference: Condition: Very Fine W :12 gr
H :28.8 mm

1



830 Collectible Items, Reference: Condition: Very Fine W :2.7 gr
H :22 mm

1



831 Collectible Items, Reference: Condition: Very Fine W :12 gr
H :24.5 mm

1



832 Collectible Items, Reference: Condition: Very Fine W :8.9 gr
H :27.5 mm

1



833 Collectible Items, Reference: Condition: Very Fine W :12.3
gr H :33.8 mm

1



834 Collectible Items, Reference: Condition: Very Fine W :4.7 gr
H :43.8 mm

1



835 Collectible Items, Reference: Condition: Very Fine W :12.3
gr H :29.7 mm

1



836 Collectible Items, Reference: Condition: Very Fine W :11.2
gr H :60 mm

1



837 Collectible Items, Reference: Condition: Very Fine W :16 gr
H :33.5 mm

1



838 Collectible Items, Reference: Condition: Very Fine W :14.2
gr H :37.5 mm

1



839 Collectible Items, Reference: Condition: Very Fine W :15.9 gr H :38 mm

1



840 Collectible Items, Reference: Condition: Very Fine W :8.9 gr H :39 mm

1



841 Collectible Items, Reference: Condition: Very Fine W :6.4 gr H :30.6 mm

1



842 Collectible Items, Reference: Condition: Very Fine W :16.3 gr H :53.7 mm

1



843 Collectible Items, Reference: Condition: Very Fine W :5.3 gr H :32 mm

1



844 Collectible Items, Reference: Condition: Very Fine W :4.9 gr
H :27.2 mm

1



845 Collectible Items, Reference: Condition: Very Fine W :5 gr H
:40 mm

1



846 Collectible Items, Reference: Condition: Very Fine W :10.6
gr H :21.6 mm

1



847 Collectible Items, Reference: Condition: Very Fine W :2.5 gr
H :14.5 mm

1



848 Collectible Items, Reference: Condition: Very Fine W :5.5 gr
H :25.5 mm

1



849 Collectible Items, Reference: Condition: Very Fine W :2.5 gr
H :26 mm

1



850 Collectible Items, Reference: Condition: Very Fine W :2.9 gr
H :24 mm

1



851 Collectible Items, Reference: Condition: Very Fine W :1.4 gr
H :27.2 mm

1



852 Collectible Items, Reference: Condition: Very Fine W :2.3 gr
H :15.5 mm

1



853 Collectible Items, Reference: Condition: Very Fine W :1.7 gr
H :17 mm

1



854 Collectible Items, Reference: Condition: Very Fine W :3.2 gr
H :17.7 mm

1



855 Collectible Items, Reference: Condition: Very Fine W :5.8 gr
H :15.5 mm

1



856 Collectible Items, Reference: Condition: Very Fine W :6.1 gr
H :20.5 mm

1



857 Collectible Items, Reference: Condition: Very Fine W :2.1 gr
H :20 mm

1



858 Collectible Items, Reference: Condition: Very Fine W :3.6 gr
H :26 mm

1



859 Collectible Items, Reference: Condition: Very Fine W :2.9 gr
H :21.9 mm

1



860 Collectible Items, Reference: Condition: Very Fine W :2.8 gr
H :28.5 mm

1



861 Collectible Items, Reference: Condition: Very Fine W :3.7 gr
H :18 mm

1



862 Collectible Items, Reference: Condition: Very Fine W :2.7 gr
H :27 mm

1



863 Collectible Items, Reference: Condition: Very Fine W :5.4 gr
H :29 mm

1



864 Collectible Items, Reference: Condition: Very Fine W :2.8 gr
H :20 mm

1



865 Collectible Items, Reference: Condition: Very Fine W :5.5 gr
H :33.4 mm

1



866 Collectible Items, Reference: Condition: Very Fine W :4.5 gr
H :30.4 mm

1



867 Collectible Items, Reference: Condition: Very Fine W :7.7 gr
H :28 mm

1



868 Collectible Items, Reference: Condition: Very Fine W :13.6
gr H :27.6 mm

1



869 Collectible Items, Reference: Condition: Very Fine W :13.3
gr H :35 mm

1



870 Collectible Items, Reference: Condition: Very Fine W :22.7
gr H :25.9 mm

1



871 Collectible Items, Reference: Condition: Very Fine W :3.3 gr
H :18.9 mm

1



872 Collectible Items, Reference: Condition: Very Fine W :18.6 gr H :39.7 mm

1



873 Collectible Items, Reference: Condition: Very Fine W :10.9 gr H :45.9 mm

1



874 Collectible Items, Reference: Condition: Very Fine W :4.1 gr H :32.7 mm

1



875 Collectible Items, Reference: Condition: Very Fine W :4.1 gr H :32.9 mm

1



876 Collectible Items, Reference: Condition: Very Fine W :1.8 gr H :26 mm

1



877 Collectible Items, Reference: Condition: Very Fine W :3.9 gr
H :30.8 mm

1



878 Collectible Items, Reference: Condition: Very Fine W :8.3 gr
H :34.6 mm

1



879 Collectible Items, Reference: Condition: Very Fine W :14.6
gr H :40 mm

1



880 Collectible Items, Reference: Condition: Very Fine W :17.4
gr H :50 mm

1



881 Collectible Items, Reference: Condition: Very Fine W :12 gr
H :48.3 mm

1



882 Collectible Items, Reference: Condition: Very Fine W :9.5 gr
H :37 mm

1



883 Collectible Items, Reference: Condition: Very Fine W :11.8
gr H :32.9 mm

1



884 Collectible Items, Reference: Condition: Very Fine W :9.9 gr
H :50.9 mm

1



885 Collectible Items, Reference: Condition: Very Fine W :24.7
gr H :18.3 mm

1



886 Collectible Items, Reference: Condition: Very Fine W :14.8
gr H :36 mm

1



887 Collectible Items, Reference: Condition: Very Fine W :5.8 gr
H :28.3 mm

1



888 Collectible Items, Reference: Condition: Very Fine W :8.2 gr
H :28.4 mm

1



889 Collectible Items, Reference: Condition: Very Fine W :10.5 gr
H :25 mm

1



890 Collectible Items, Reference: Condition: Very Fine W :3.7 gr
H :26.8 mm

1



891 Collectible Items, Reference: Condition: Very Fine W :3.2 gr
H :32.3 mm

1



892 Collectible Items, Reference: Condition: Very Fine W :22.5 gr
H :26 mm

1



893 Collectible Items, Reference: Condition: Very Fine W :15.2 gr
H :44.5 mm

1



894 Collectible Items, Reference: Condition: Very Fine W :5.5 gr
H :23.5 mm

1



895 Collectible Items, Reference: Condition: Very Fine W :21.4
gr H :38 mm

1



896 Collectible Items, Reference: Condition: Very Fine W :28.9
gr H :21.7 mm

1



897 Collectible Items, Reference: Condition: Very Fine W :14 gr
H :36.1 mm

1



898 Collectible Items, Reference: Condition: Very Fine W :13.3
gr H :46.4 mm

1



899 Collectible Items, Reference: Condition: Very Fine W :3.6 gr
H :21.8 mm

1



900 Collectible Items, Reference: Condition: Very Fine W :3.4 gr
H :50.3 mm

1



901 Collectible Items, Reference: Condition: Very Fine W :3.5 gr
H :49 mm

1



902 Collectible Items, Reference: Condition: Very Fine W :2.1 gr
H :47 mm

1



903 Collectible Items, Reference: Condition: Very Fine W :3.2 gr
H :26 mm

1



904 Collectible Items, Reference: Condition: Very Fine W :5 gr
H :90 mm

1



905 Collectible Items, Reference: Condition: Very Fine W :8.3 gr
H :88.3 mm

1



906 Collectible Items, Reference: Condition: Very Fine W :2.6 gr
H :38.7 mm

1



907 Collectible Items, Reference: Condition: Very Fine W :6.8 gr
H :31.8 mm

1



908 Collectible Items, Reference: Condition: Very Fine W :9.9 gr
H :34.2 mm

1



909 Collectible Items, Reference: Condition: Very Fine W :3.5 gr
H :21.1 mm

1



910 Collectible Items, Reference: Condition: Very Fine W :7.2 gr
H :13.8 mm

1



911 Collectible Items, Reference: Condition: Very Fine W :17.3
gr H :34 mm

1



912 Collectible Items, Reference: Condition: Very Fine W :27.5
gr H :45.7 mm

1



913 Collectible Items, Reference: Condition: Very Fine W :1.4 gr
H :28.5 mm

1



914 Collectible Items, Reference: Condition: Very Fine W :4 gr H
:19.7 mm

1



915 Collectible Items, Reference: Condition: Very Fine W :18.8
gr H :42.3 mm

1



916 Collectible Items, Reference: Condition: Very Fine W :7.9 gr
H :46.3 mm

1



917 Collectible Items, Reference: Condition: Very Fine W :32.6
gr H :125.9 mm

1



918 Collectible Items, Reference: Condition: Very Fine W :32.2
gr H :126.6 mm

1



919 Collectible Items, Reference: Condition: Very Fine W :8.1 gr
H :64 mm

1



920 Collectible Items, Reference: Condition: Very Fine W :6.8 gr
H :67 mm

1



921 Collectible Items, Reference: Condition: Very Fine W :9.4 gr
H :65 mm

1



922 Collectible Items, Reference: Condition: Very Fine W :6.7 gr
H :47.6 mm

1



923 Collectible Items, Reference: Condition: Very Fine W :5.2 gr
H :37.9 mm

1



924 Collectible Items, Reference: Condition: Very Fine W :3.4 gr
H :39.4 mm

1



925 Collectible Items, Reference: Condition: Very Fine W :7.9 gr
H :45 mm

1



926 Collectible Items, Reference: Condition: Very Fine W :4.8 gr
H :57.3 mm

1



927 Collectible Items, Reference: Condition: Very Fine W :5.2 gr
H :49 mm

1



928 Collectible Items, Reference: Condition: Very Fine W :8.5 gr
H :56.4 mm

1



929 Collectible Items, Reference: Condition: Very Fine W :17.3 gr
gr H :78.2 mm

1



930 Collectible Items, Reference: Condition: Very Fine W :5 gr H :42.5 mm

1



931 Collectible Items, Reference: Condition: Very Fine W :21.2 gr H :79.2 mm

1



932 Collectible Items, Reference: Condition: Very Fine W :4.9 gr H :43.7 mm

1



933 Collectible Items, Reference: Condition: Very Fine W :17.6 gr H :54 mm

1



934 Collectible Items, Reference: Condition: Very Fine W :15.1 gr H :50.3 mm

1



935 Collectible Items, Reference: Condition: Very Fine W :16.4 gr H :67.4 mm

1



936 Collectible Items, Reference: Condition: Very Fine W :17.4 gr H :53.5 mm

1



937 Collectible Items, Reference: Condition: Very Fine W :16.2 gr H :46 mm

1



938 Collectible Items, Reference: Condition: Very Fine W :1.6 gr H :16 mm

1



939 Collectible Items, Reference: Condition: Very Fine W :17 gr H :29 mm

1



940 Collectible Items, Reference: Condition: Very Fine W :24 gr H :39.7 mm

1



941 Collectible Items, Reference: Condition: Very Fine W :16.6 gr H :28.3 mm

1



942 Collectible Items, Reference: Condition: Very Fine W :7.3 gr
H :34.4 mm

1



943 Collectible Items, Reference: Condition: Very Fine W :10.5
gr H :40.4 mm

1



944 Collectible Items, Reference: Condition: Very Fine W :42.7
gr H :36 mm

1



945 Collectible Items, Reference: Condition: Very Fine W :lot H :

1



946 Collectible Items, Reference: Condition: Very Fine W :lot H :

1