



NBS Auctions

Promo Auction 3

12 November 2023

All prices are starting prices (EUR)
PDF catalog created by www.biddr.com



1 Judaea. Cut AR Hacksilver. Circa 13th-5th century BCE.
Reference: Condition: Very Fine W :5 gr H :12.7 mm

1



2 Judaea. Cut AR Hacksilver. Circa 13th-5th century BCE.
Reference: Condition: Very Fine W :5.1 gr H :11.9 mm

1



3 Judaea. Cut AR Hacksilver. Circa 13th-5th century BCE.
Reference: Condition: Very Fine W :3.8 gr H :11.4 mm

1



4 Judaea. Cut AR Hacksilver. Circa 13th-5th century BCE.
Reference: Condition: Very Fine W :3.2 gr H :13.4 mm

1



5 Judaea. Cut AR Hacksilver. Circa 13th-5th century BCE.
Reference: Condition: Very Fine W :2.4 gr H :10.7 mm

1



6 Judaea. Cut AR Hacksilver. Circa 13th-5th century BCE.
Reference: Condition: Very Fine W :3.4 gr H :14.3 mm

1



7 Lydian Kingdom. Kroisos. Ca. 560-546 B.C. AR Reference:
Condition: Very Fine W :3.3 gr H :14.2 mm

1



8 Lydian Kingdom. Kroisos. Ca. 560-546 B.C. AR Reference:
Condition: Very Fine W :4.1 gr H :14.3 mm

1



9 Lydian Kingdom. Kroisos. Ca. 560-546 B.C. AR Reference:
Condition: Very Fine W :0.7 gr H :7.8 mm

1



10 Judaea. Cut AR Hacksilver. Circa 13th-5th century BCE.
Reference: Condition: Very Fine W :17.1 gr H :23.6 mm

1



11 Judaea. Cut AR Hacksilver. Circa 13th-5th century BCE.
Reference: Condition: Very Fine W :17.2 gr H :22.2 mm

1



12 Judaea. Cut AR Hacksilver. Circa 13th-5th century BCE.
Reference: Condition: Very Fine W :13.1 gr H :20 mm

1



13 KINGS OF MACEDON. Alexander III 'the Great' (336-323 BC).
Ar. Drachm. Reference: Condition: Very Fine W :4.3 gr H :17.2
mm

1



14 KINGS OF MACEDON. Alexander III 'the Great' (336-323 BC).
Ar. Drachm. Reference: Condition: Very Fine W :2.5 gr H :18.2
mm

1



15 KINGS OF MACEDON. Alexander III 'the Great' (336-323 BC).
Ar. Drachm. Reference: Condition: Very Fine W :3.8 gr H :16.8
mm

1



16 KINGS OF MACEDON. Alexander III 'the Great' (336-323 BC).
Ar. Drachm. Reference: Condition: Very Fine W :3.9 gr H :17.1
mm

1



17 KINGS OF MACEDON. Alexander III 'the Great' (336-323 BC).
Ar. Drachm. Reference: Condition: Very Fine W :3.8 gr H :18 mm

1



18 KINGS OF MACEDON. Alexander III 'the Great' (336-323 BC).
Ar. Drachm. Reference: Condition: Very Fine W :3.8 gr H :17.2
mm

1



19 KINGS OF MACEDON. Alexander III 'the Great' (336-323 BC).
Ar. Drachm. Reference: Condition: Very Fine W :3.8 gr H :17.1
mm

1



20 KINGS OF MACEDON. Alexander III 'the Great' (336-323 BC).
Ar. Drachm. Reference: Condition: Very Fine W :3.8 gr H :17.5
mm

1



21 KINGS OF MACEDON. Alexander III 'the Great' (336-323 BC).
Ar. Drachm. Reference: Condition: Very Fine W :3.6 gr H :17.9
mm

1



22 KINGS OF MACEDON. Alexander III 'the Great' (336-323 BC).
Ar. Drachm. Reference: Condition: Very Fine W :3.8 gr H :17.2
mm

1



23 KINGS OF MACEDON. Alexander III 'the Great' (336-323 BC).
Ar. Drachm. Reference: Condition: Very Fine W :3.5 gr H :16 mm

1



24 KINGS OF MACEDON. Alexander III 'the Great' (336-323 BC).
Ar. Drachm. Reference: Condition: Very Fine W :3.7 gr H :15.1 mm

1



25 KINGS OF MACEDON. Alexander III 'the Great' (336-323 BC).
Ar. Drachm. Reference: Condition: Very Fine W :3.5 gr H :16 mm

1



26 KINGS OF MACEDON. Alexander III 'the Great' (336-323 BC).
Ar. Drachm. Reference: Condition: Very Fine W :4.1 gr H :17.4 mm

1



27 KINGS OF MACEDON. Alexander III 'the Great' (336-323 BC).
Ar. Drachm. Reference: Condition: Very Fine W :4 gr H :18.5 mm

1



28 KINGS OF MACEDON. Alexander III 'the Great' (336-323 BC).
Ar. Drachm. Reference: Condition: Very Fine W :3.9 gr H :16.5 mm

1



29 MYSIA, Pergamon. 310-282 BC. AR Diobol Reference:
Condition: Very Fine W :1.1 gr H :10 mm

1



30 Thrace, Byzantion. 340-320 B.C. AR Reference: Condition:
Very Fine W :5.1 gr H :16.1 mm

1



31 Thrace, Byzantion. 340-320 B.C. AR Reference: Condition:
Very Fine W :4.9 gr H :16 mm

1



32 Thrace, Byzantion. 340-320 B.C. AR Reference: Condition:
Very Fine W :5.2 gr H :17.1 mm

1



33 Thrace, Byzantion. 340-320 B.C. AR Reference: Condition:
Very Fine W :2.4 gr H :12.8 mm

1



34 Thrace, Byzantion. 340-320 B.C. AR Reference: Condition:
Very Fine W :2.3 gr H :13.8 mm

1



35 Thrace, Byzantion. 340-320 B.C. AR Reference: Condition:
Very Fine W :2.5 gr H :12.6 mm

1



36 Thrace, Byzantion. 340-320 B.C. AR Reference: Condition:
Very Fine W :2.4 gr H :13.6 mm

1



37 Thrace, Cherronesos. Ca. 400-350 B.C. AR hemidrachm
Reference: Condition: Very Fine W :2.5 gr H :12.4 mm

1



38 Greek Coins Obols. 4th - 1st century B.C. Ar. Reference:
Condition: Very Fine W :1.1 gr H :10.8 mm

1



39 Greek Coins Obols. 4th - 1st century B.C. Ar. Reference:
Condition: Very Fine W :0.5 gr H :9.7 mm

1



40 Greek Coins Obols. 4th - 1st century B.C. Ar. Reference:
Condition: Very Fine W :0.6 gr H :10.8 mm

1



41 Greek Coins Obols. 4th - 1st century B.C. Ar. Reference:
Condition: Very Fine W :0.7 gr H :10.7 mm

1



42 Greek Coins Obols. 4th - 1st century B.C. Ar. Reference:
Condition: Very Fine W :0.5 gr H :9.4 mm

1



43 Greek Coins Obols. 4th - 1st century B.C. Ar. Reference:
Condition: Very Fine W :0.5 gr H :9.7 mm

1



44 Greek Coins Obols. 4th - 1st century B.C. Ar. Reference:
Condition: Very Fine W :0.6 gr H :12.5 mm

1



45 Greek Coins Obols. 4th - 1st century B.C. Ar. Reference:
Condition: Very Fine W :0.7 gr H :11.5 mm

1



46 Greek Coins Obols. 4th - 1st century B.C. Ar. Reference:
Condition: Very Fine W :0.6 gr H :9.2 mm

1



47 Greek Coins Obols. 4th - 1st century B.C. Ar. Reference:
Condition: Very Fine W :0.6 gr H :9.7 mm

1



48 Greek Coins Obols. 4th - 1st century B.C. Ar. Reference:
Condition: Very Fine W :0.6 gr H :10.5 mm

1



49 Greek Coins Obols. 4th - 1st century B.C. Ar. Reference:
Condition: Very Fine W :0.5 gr H :9.8 mm

1



50 Greek Coins Obols. 4th - 1st century B.C. Ar. Reference:
Condition: Very Fine W :0.8 gr H :10.2 mm

1



51 Greek Coins Obols. 4th - 1st century B.C. Ar. Reference:
Condition: Very Fine W :0.4 gr H :9.3 mm

1



52 Greek Coins Obols. 4th - 1st century B.C. Ar. Reference:
Condition: Very Fine W :0.6 gr H :11.2 mm

1



53 Greek Coins Obols. 4th - 1st century B.C. Ar. Reference:
Condition: Very Fine W :0.6 gr H :7.9 mm

1



54 Greek Coins Obols. 4th - 1st century B.C. Ar. Reference:
Condition: Very Fine W :0.8 gr H :9.5 mm

1



55 Greek Coins Obols. 4th - 1st century B.C. Ar. Reference:
Condition: Very Fine W :0.5 gr H :9.7 mm

1



56 Cappadocian Kingdom. Ariobarzanes III. 52-42 B.C. AR
drachm Reference: Condition: Very Fine W :4.4 gr H :16.1 mm

1



57 Cappadocian Kingdom. Ariobarzanes III. 52-42 B.C. AR
drachm Reference: Condition: Very Fine W :3.1 gr H :15.9 mm

1



58 Cappadocian Kingdom. Ariobarzanes III. 52-42 B.C. AR drachm Reference: Condition: Very Fine W :3.1 gr H :15.7 mm

1



59 Cappadocian Kingdom. Ariobarzanes I. 95-63 B.C. AR drachm Reference: Condition: Very Fine W :3.2 gr H :17.3 mm

1



60 Cappadocian Kingdom. Ariobarzanes III. 52-42 B.C. AR drachm Reference: Condition: Very Fine W :3.9 gr H :15.4 mm

1



61 Greek Coins. 4th - 1st century B.C. AE Reference: Condition: Very Fine W :4.1 gr H :18.5 mm

1



62 Greek Coins. 4th - 1st century B.C. AE Reference: Condition: Very Fine W :4.5 gr H :17.2 mm

1



63 Greek Coins. 4th - 1st century B.C. AE Reference: Condition: Very Fine W :4.4 gr H :17 mm

1



64 Greek Coins. 4th - 1st century B.C. AE Reference: Condition: Very Fine W :3 gr H :13.8 mm

1



65 Greek Coins. 4th - 1st century B.C. AE Reference: Condition:
Very Fine W :3.3 gr H :15.5 mm

1



66 Greek Coins. 4th - 1st century B.C. AE Reference: Condition:
Very Fine W :5.2 gr H :20.4 mm

1



67 Greek Coins. 4th - 1st century B.C. AE Reference: Condition:
Very Fine W :5.6 gr H :18.7 mm

1



68 Greek Coins. 4th - 1st century B.C. AE Reference: Condition:
Very Fine W :4.8 gr H :17.2 mm

1



69 Greek Coins. 4th - 1st century B.C. AE Reference: Condition:
Very Fine W :4.9 gr H :18 mm

1



70 Greek Coins. 4th - 1st century B.C. AE Reference: Condition:
Very Fine W :4.8 gr H :17.9 mm

1



71 Greek Coins. 4th - 1st century B.C. AE Reference: Condition:
Very Fine W :5.8 gr H :19.7 mm

1



72 Greek Coins. 4th - 1st century B.C. AE Reference: Condition:
Very Fine W :6.3 gr H :19.5 mm

1



73 Greek Coins. 4th - 1st century B.C. AE Reference: Condition:
Very Fine W :4.5 gr H :16 mm

1



74 Greek Coins. 4th - 1st century B.C. AE Reference: Condition:
Very Fine W :8.7 gr H :20 mm

1



75 Greek Coins. 4th - 1st century B.C. AE Reference: Condition:
Very Fine W :8.6 gr H :21 mm

1



76 Greek Coins. 4th - 1st century B.C. AE Reference: Condition:
Very Fine W :5.7 gr H :18.5 mm

1



77 Greek Coins. 4th - 1st century B.C. AE Reference: Condition:
Very Fine W :3.3 gr H :18.2 mm

1



78 Greek Coins. 4th - 1st century B.C. AE Reference: Condition:
Very Fine W :3.5 gr H :16.5 mm

1



79 Greek Coins. 4th - 1st century B.C. AE Reference: Condition:
Very Fine W :3.5 gr H :15.7 mm

1



80 Greek Coins. 4th - 1st century B.C. AE Reference: Condition:
Very Fine W :3.7 gr H :14.9 mm

1



81 Greek Coins. 4th - 1st century B.C. AE Reference: Condition:
Very Fine W :4.3 gr H :16.6 mm

1



82 Greek Coins. 4th - 1st century B.C. AE Reference: Condition:
Very Fine W :4.9 gr H :17 mm

1



83 Greek Coins. 4th - 1st century B.C. AE Reference: Condition:
Very Fine W :6.8 gr H :15.6 mm

1



84 Greek Coins. 4th - 1st century B.C. AE Reference: Condition:
Very Fine W :5.9 gr H :18.2 mm

1



85 Greek Coins. 4th - 1st century B.C. AE Reference: Condition:
Very Fine W :1.8 gr H :12.3 mm

1



86 Greek Coins. 4th - 1st century B.C. AE Reference: Condition:
Very Fine W :2.1 gr H :11.7 mm

1



87 Greek Coins. 4th - 1st century B.C. AE Reference: Condition:
Very Fine W :1.7 gr H :11 mm

1



88 Greek Coins. 4th - 1st century B.C. AE Reference: Condition:
Very Fine W :1.7 gr H :12.3 mm

1



89 Greek Coins. 4th - 1st century B.C. AE Reference: Condition:
Very Fine W :2.3 gr H :11.9 mm

1



90 Greek Coins. 4th - 1st century B.C. AE Reference: Condition:
Very Fine W :1.7 gr H :10.6 mm

1



91 Greek Coins. 4th - 1st century B.C. AE Reference: Condition:
Very Fine W :1.9 gr H :10.6 mm

1



92 Greek Coins. 4th - 1st century B.C. AE Reference: Condition:
Very Fine W :6.5 gr H :19 mm

1



93 Greek Coins. 4th - 1st century B.C. AE Reference: Condition:
Very Fine W :4.9 gr H :15.4 mm

1



94 Greek Coins. 4th - 1st century B.C. AE Reference: Condition:
Very Fine W :4 gr H :17.6 mm

1



95 Greek Coins. 4th - 1st century B.C. AE Reference: Condition:
Very Fine W :5.3 gr H :18.8 mm

1



96 Greek Coins. 4th - 1st century B.C. AE Reference: Condition:
Very Fine W :0.9 gr H :9.2 mm

1



97 Greek Coins. 4th - 1st century B.C. AE Reference: Condition:
Very Fine W :3 gr H :14.6 mm

1



98 Greek Coins. 4th - 1st century B.C. AE Reference: Condition:
Very Fine W :4.3 gr H :17.2 mm

1



99 Greek Coins. 4th - 1st century B.C. AE Reference: Condition:
Very Fine W :4 gr H :18.3 mm

1



100 Greek Coins. 4th - 1st century B.C. AE Reference: Condition:
Very Fine W :1.9 gr H :13.6 mm

1



101 Greek Coins. 4th - 1st century B.C. AE Reference: Condition:
Very Fine W :9.1 gr H :20 mm

1



102 Greek Coins. 4th - 1st century B.C. AE Reference: Condition:
Very Fine W :3 gr H :15.4 mm

1



103 Greek Coins. 4th - 1st century B.C. AE Reference: Condition:
Very Fine W :2.8 gr H :16 mm

1



104 Greek Coins. 4th - 1st century B.C. AE Reference: Condition:
Very Fine W :3.3 gr H :16.2 mm

1



105 Greek Coins. 4th - 1st century B.C. AE Reference: Condition:
Very Fine W :2.2 gr H :13.7 mm

1



106 Greek Coins. 4th - 1st century B.C. AE Reference: Condition:
Very Fine W :1.5 gr H :11 mm

1



107 Greek Coins. 4th - 1st century B.C. AE Reference: Condition:
Very Fine W :1.4 gr H :10.4 mm

1



108 Greek Coins. 4th - 1st century B.C. AE Reference: Condition:
Very Fine W :6.7 gr H :18.5 mm

1



109 Greek Coins. 4th - 1st century B.C. AE Reference: Condition:
Very Fine W :1.2 gr H :10.6 mm

1



110 Greek Coins. 4th - 1st century B.C. AE Reference: Condition:
Very Fine W :1.2 gr H :10.8 mm

1



111 Greek Coins. 4th - 1st century B.C. AE Reference: Condition:
Very Fine W :1.6 gr H :12.9 mm

1



112 Greek Coins. 4th - 1st century B.C. AE Reference: Condition:
Very Fine W :1.4 gr H :11.5 mm

1



113 Greek Coins. 4th - 1st century B.C. AE Reference: Condition:
Very Fine W :1.4 gr H :9.8 mm

1



114 Greek Coins. 4th - 1st century B.C. AE Reference: Condition:
Very Fine W :1.2 gr H :10.2 mm

1



115 Greek Coins. 4th - 1st century B.C. AE Reference: Condition:
Very Fine W :1.1 gr H :10.4 mm

1



116 Greek Coins. 4th - 1st century B.C. AE Reference: Condition:
Very Fine W :1.2 gr H :11.5 mm

1



117 Greek Coins. 4th - 1st century B.C. AE Reference: Condition:
Very Fine W :2.5 gr H :15 mm

1



118 Greek Coins. 4th - 1st century B.C. AE Reference: Condition:
Very Fine W :2.6 gr H :14.3 mm

1



119 Greek Coins. 4th - 1st century B.C. AE Reference: Condition:
Very Fine W :0.9 gr H :9.5 mm

1



120 Greek Coins. 4th - 1st century B.C. AE Reference: Condition:
Very Fine W :2.1 gr H :12.1 mm

1



121 Greek Coins. 4th - 1st century B.C. AE Reference: Condition:
Very Fine W :4.1 gr H :15.2 mm

1



122 Greek Coins. 4th - 1st century B.C. AE Reference: Condition:
Very Fine W :4.1 gr H :18 mm

1



123 Greek Coins. 4th - 1st century B.C. AE Reference: Condition:
Very Fine W :4.4 gr H :17.5 mm

1



124 Greek Coins. 4th - 1st century B.C. AE Reference: Condition:
Very Fine W :3.5 gr H :18.5 mm

1



125 Greek Coins. 4th - 1st century B.C. AE Reference: Condition:
Very Fine W :5 gr H :18 mm

1



126 Greek Coins. 4th - 1st century B.C. AE Reference: Condition:
Very Fine W :4.7 gr H :19.8 mm

1



127 Greek Coins. 4th - 1st century B.C. AE Reference: Condition:
Very Fine W :8 gr H :20 mm

1



128 Greek Coins. 4th - 1st century B.C. AE Reference: Condition:
Very Fine W :6.4 gr H :21.7 mm

1



129 Greek Coins. 4th - 1st century B.C. AE Reference: Condition:
Very Fine W :8.2 gr H :22 mm

1



130 Greek Coins. 4th - 1st century B.C. AE Reference: Condition:
Very Fine W :6.4 gr H :18.3 mm

1



131 Greek Coins. 4th - 1st century B.C. AE Reference: Condition:
Very Fine W :7.6 gr H :18.5 mm

1



132 Greek Coins. 4th - 1st century B.C. AE Reference: Condition:
Very Fine W :6.5 gr H :18.4 mm

1



133 Greek Coins. 4th - 1st century B.C. AE Reference: Condition:
Very Fine W :8.1 gr H :18.4 mm

1



134 Greek Coins. 4th - 1st century B.C. AE Reference: Condition:
Very Fine W :7.5 gr H :18.9 mm

1



135 Greek Coins. 4th - 1st century B.C. AE Reference: Condition:
Very Fine W :6 gr H :16.5 mm

1



136 Greek Coins. 4th - 1st century B.C. AE Reference: Condition:
Very Fine W :5.2 gr H :18.3 mm

1



137 Greek Coins. 4th - 1st century B.C. AE Reference: Condition:
Very Fine W :3.6 gr H :15.3 mm

1



138 Greek Coins. 4th - 1st century B.C. AE Reference: Condition:
Very Fine W :6.3 gr H :16 mm

1



139 Greek Coins. 4th - 1st century B.C. AE Reference: Condition:
Very Fine W :6.3 gr H :15.3 mm

1



140 Greek Coins. 4th - 1st century B.C. AE Reference: Condition:
Very Fine W :2.7 gr H :14 mm

1



141 Greek Coins. 4th - 1st century B.C. AE Reference: Condition:
Very Fine W :3.3 gr H :14 mm

1



142 Greek Coins. 4th - 1st century B.C. AE Reference: Condition:
Very Fine W :4.7 gr H :14.7 mm

1



143 Greek Coins. 4th - 1st century B.C. AE Reference: Condition:
Very Fine W :2.4 gr H :13 mm

1



144 Greek Coins. 4th - 1st century B.C. AE Reference: Condition:
Very Fine W :2.2 gr H :13 mm

1



145 Greek Coins. 4th - 1st century B.C. AE Reference: Condition:
Very Fine W :1.6 gr H :11 mm

1



146 Greek Coins. 4th - 1st century B.C. AE Reference: Condition:
Very Fine W :1.2 gr H :8.7 mm

1



147 Greek Coins. 4th - 1st century B.C. AE Reference: Condition:
Very Fine W :1.5 gr H :11.3 mm

1



148 Greek Coins. 4th - 1st century B.C. AE Reference: Condition:
Very Fine W :1.2 gr H :10 mm

1



149 Greek Coins. 4th - 1st century B.C. AE Reference: Condition:
Very Fine W :0.7 gr H :7.7 mm

1



150 Greek Coins. 4th - 1st century B.C. AE Reference: Condition:
Very Fine W :1.9 gr H :10.6 mm

1



151 Greek Coins. 4th - 1st century B.C. AE Reference: Condition:
Very Fine W :1.6 gr H :11.5 mm

1



152 Greek Coins. 4th - 1st century B.C. AE Reference: Condition:
Very Fine W :1 gr H :10 mm

1



153 Greek Coins. 4th - 1st century B.C. AE Reference: Condition:
Very Fine W :1.1 gr H :9.5 mm

1



154 Greek Coins. 4th - 1st century B.C. AE Reference: Condition:
Very Fine W :1.9 gr H :10.4 mm

1



155 Greek Coins. 4th - 1st century B.C. AE Reference: Condition:
Very Fine W :1.7 gr H :11.5 mm

1



156 Greek Coins. 4th - 1st century B.C. AE Reference: Condition:
Very Fine W :1.3 gr H :8.9 mm

1



157 Greek Coins. 4th - 1st century B.C. AE Reference: Condition:
Very Fine W :0.8 gr H :8.7 mm

1



158 Greek Coins. 4th - 1st century B.C. AE Reference: Condition:
Very Fine W :0.6 gr H :8.6 mm

1



159 Greek Coins. 4th - 1st century B.C. AE Reference: Condition:
Very Fine W :2.6 gr H :12.6 mm

1



160 Greek Coins. 4th - 1st century B.C. AE Reference: Condition:
Very Fine W :1.5 gr H :9.3 mm

1



161 Greek Coins. 4th - 1st century B.C. AE Reference: Condition:
Very Fine W :1.4 gr H :10.2 mm

1



162 Greek Coins. 4th - 1st century B.C. AE Reference: Condition:
Very Fine W :1.1 gr H :9.7 mm

1



163 Greek Coins. 4th - 1st century B.C. AE Reference: Condition:
Very Fine W :2.5 gr H :11.7 mm

1



164 Greek Coins. 4th - 1st century B.C. AE Reference: Condition:
Very Fine W :3.5 gr H :13 mm

1



165 Greek Coins. 4th - 1st century B.C. AE Reference: Condition:
Very Fine W :0.7 gr H :8.4 mm

1



166 Greek Coins. 4th - 1st century B.C. AE Reference: Condition:
Very Fine W :1.1 gr H :10.3 mm

1



167 Greek Coins. 4th - 1st century B.C. AE Reference: Condition:
Very Fine W :1.3 gr H :9.7 mm

1



168 Greek Coins. 4th - 1st century B.C. AE Reference: Condition:
Very Fine W :1.1 gr H :9.5 mm

1



169 Greek Coins. 4th - 1st century B.C. AE Reference: Condition:
Very Fine W :3.8 gr H :16.5 mm

1



170 Greek Coins. 4th - 1st century B.C. AE Reference: Condition:
Very Fine W :2.3 gr H :13 mm

1



171 Greek Coins. 4th - 1st century B.C. AE Reference: Condition:
Very Fine W :4.3 gr H :17 mm

1



172 Greek Coins. 4th - 1st century B.C. AE Reference: Condition:
Very Fine W :2.9 gr H :15.6 mm

1



173 Greek Coins. 4th - 1st century B.C. AE Reference: Condition:
Very Fine W :5.9 gr H :18 mm

1



174 Greek Coins. 4th - 1st century B.C. AE Reference: Condition:
Very Fine W :4.1 gr H :15.3 mm

1



175 Greek Coins. 4th - 1st century B.C. AE Reference: Condition:
Very Fine W :4 gr H :15 mm

1



176 Greek Coins. 4th - 1st century B.C. AE Reference: Condition:
Very Fine W :4.4 gr H :16.5 mm

1



177 Greek Coins. 4th - 1st century B.C. AE Reference: Condition:
Very Fine W :5.7 gr H :18 mm

1



178 Greek Coins. 4th - 1st century B.C. AE Reference: Condition:
Very Fine W :3.8 gr H :16 mm

1



179 Greek Coins. 4th - 1st century B.C. AE Reference: Condition:
Very Fine W :6.1 gr H :19 mm

1



180 Greek Coins. 4th - 1st century B.C. AE Reference: Condition:
Very Fine W :3.8 gr H :15.8 mm

1



181 Greek Coins. 4th - 1st century B.C. AE Reference: Condition:
Very Fine W :3.1 gr H :17.6 mm

1



182 Greek Coins. 4th - 1st century B.C. AE Reference: Condition:
Very Fine W :4.1 gr H :14.3 mm

1



183 Greek Coins. 4th - 1st century B.C. AE Reference: Condition:
Very Fine W :6.1 gr H :15.7 mm

1



184 Greek Coins. 4th - 1st century B.C. AE Reference: Condition:
Very Fine W :7.7 gr H :10.7 mm

1



185 Greek Coins. 4th - 1st century B.C. AE Reference: Condition:
Very Fine W :1.2 gr H :10 mm

1



186 Greek Coins. 4th - 1st century B.C. AE Reference: Condition:
Very Fine W :1.2 gr H :9.3 mm

1



187 Greek Coins. 4th - 1st century B.C. AE Reference: Condition:
Very Fine W :4 gr H :15.6 mm

1



188 Greek Coins. 4th - 1st century B.C. AE Reference: Condition:
Very Fine W :3 gr H :15 mm

1



189 Greek Coins. 4th - 1st century B.C. AE Reference: Condition:
Very Fine W :2.3 gr H :11 mm

1



190 Greek Coins. 4th - 1st century B.C. AE Reference: Condition:
Very Fine W :2.1 gr H :10.8 mm

1



191 Greek Coins. 4th - 1st century B.C. AE Reference: Condition:
Very Fine W :9.5 gr H :22.3 mm

1



192 Greek Coins. 4th - 1st century B.C. AE Reference: Condition:
Very Fine W :7.2 gr H :21 mm

1



193 Greek Coins. 4th - 1st century B.C. AE Reference: Condition:
Very Fine W :8.3 gr H :20.3 mm

1



194 Greek Coins. 4th - 1st century B.C. AE Reference: Condition:
Very Fine W :8.6 gr H :18.8 mm

1



195 Greek Coins. 4th - 1st century B.C. AE Reference: Condition:
Very Fine W :8.6 gr H :20 mm

1



196 Greek Coins. 4th - 1st century B.C. AE Reference: Condition:
Very Fine W :7.1 gr H :20 mm

1



197 Greek Coins. 4th - 1st century B.C. AE Reference: Condition:
Very Fine W :5.2 gr H :19.8 mm

1



198 Greek Coins. 4th - 1st century B.C. AE Reference: Condition:
Very Fine W :7.1 gr H :20.8 mm

1



199 Greek Coins. 4th - 1st century B.C. AE Reference: Condition:
Very Fine W :7.3 gr H :20 mm

1



200 Greek Coins. 4th - 1st century B.C. AE Reference: Condition:
Very Fine W :6.9 gr H :20.9 mm

1



201 Greek Coins. 4th - 1st century B.C. AE Reference: Condition:
Very Fine W :9.2 gr H :20.4 mm

1



202 Greek Coins. 4th - 1st century B.C. AE Reference: Condition:
Very Fine W :7 gr H :19.5 mm

1



203 Greek Coins. 4th - 1st century B.C. AE Reference: Condition:
Very Fine W :6.8 gr H :21 mm

1



204 Greek Coins. 4th - 1st century B.C. AE Reference: Condition:
Very Fine W :6.8 gr H :20 mm

1



205 Greek Coins. 4th - 1st century B.C. AE Reference: Condition:
Very Fine W :7.8 gr H :19 mm

1



206 Greek Coins. 4th - 1st century B.C. AE Reference: Condition:
Very Fine W :7.4 gr H :20 mm

1



207 Greek Coins. 4th - 1st century B.C. AE Reference: Condition:
Very Fine W :6.8 gr H :21.8 mm

1



208 Greek Coins. 4th - 1st century B.C. AE Reference: Condition:
Very Fine W :6.6 gr H :19.8 mm

1



209 Greek Coins. 4th - 1st century B.C. AE Reference: Condition:
Very Fine W :7.7 gr H :20.9 mm

1



210 Greek Coins. 4th - 1st century B.C. AE Reference: Condition:
Very Fine W :7 gr H :20.4 mm

1



211 Greek Coins. 4th - 1st century B.C. AE Reference: Condition:
Very Fine W :6.7 gr H :21.7 mm

1



212 Greek Coins. 4th - 1st century B.C. AE Reference: Condition:
Very Fine W :8.1 gr H :19.6 mm

1



213 Greek Coins. 4th - 1st century B.C. AE Reference: Condition:
Very Fine W :8.1 gr H :21.9 mm

1



214 Greek Coins. 4th - 1st century B.C. AE Reference: Condition:
Very Fine W :7.1 gr H :20.5 mm

1



215 Greek Coins. 4th - 1st century B.C. AE Reference: Condition:
Very Fine W :8.3 gr H :20.3 mm

1



216 Greek Coins. 4th - 1st century B.C. AE Reference: Condition:
Very Fine W :9.1 gr H :21.8 mm

1



217 Greek Coins. 4th - 1st century B.C. AE Reference: Condition:
Very Fine W :7.7 gr H :20.5 mm

1



218 Greek Coins. 4th - 1st century B.C. AE Reference: Condition:
Very Fine W :7.9 gr H :20.4 mm

1



219 Greek Coins. 4th - 1st century B.C. AE Reference: Condition:
Very Fine W :8.3 gr H :19.7 mm

1



220 Greek Coins. 4th - 1st century B.C. AE Reference: Condition:
Very Fine W :7.6 gr H :21.5 mm

1



221 Greek Coins. 4th - 1st century B.C. AE Reference: Condition:
Very Fine W :8.3 gr H :19.7 mm

1



222 Greek Coins. 4th - 1st century B.C. AE Reference: Condition:
Very Fine W :8.3 gr H :18.5 mm

1



223 Greek Coins. 4th - 1st century B.C. AE Reference: Condition:
Very Fine W :8.3 gr H :20 mm

1



224 Greek Coins. 4th - 1st century B.C. AE Reference: Condition:
Very Fine W :3.9 gr H :16.3 mm

1



225 Greek Coins. 4th - 1st century B.C. AE Reference: Condition:
Very Fine W :4.8 gr H :18.1 mm

1



226 Greek Coins. 4th - 1st century B.C. AE Reference: Condition:
Very Fine W :6.8 gr H :20.9 mm

1



227 Greek Coins. 4th - 1st century B.C. AE Reference: Condition:
Very Fine W :7 gr H :20.3 mm

1



228 Greek Coins. 4th - 1st century B.C. AE Reference: Condition:
Very Fine W :8.3 gr H :21.3 mm

1



229 Greek Coins. 4th - 1st century B.C. AE Reference: Condition:
Very Fine W :8.2 gr H :20.3 mm

1



230 Greek Coins. 4th - 1st century B.C. AE Reference: Condition:
Very Fine W :7.9 gr H :20.9 mm

1



231 Greek Coins. 4th - 1st century B.C. AE Reference: Condition:
Very Fine W :7.4 gr H :22 mm

1



232 Greek Coins. 4th - 1st century B.C. AE Reference: Condition:
Very Fine W :5.4 gr H :18 mm

1



233 Greek Coins. 4th - 1st century B.C. AE Reference: Condition:
Very Fine W :3.1 gr H :15.4 mm

1



234 Greek Coins. 4th - 1st century B.C. AE Reference: Condition:
Very Fine W :2.4 gr H :14.4 mm

1



235 Greek Coins. 4th - 1st century B.C. AE Reference: Condition:
Very Fine W :1.3 gr H :12 mm

1



236 Greek Coins. 4th - 1st century B.C. AE Reference: Condition:
Very Fine W :1 gr H :10.5 mm

1



237 Greek Coins. 4th - 1st century B.C. AE Reference: Condition:
Very Fine W :1.1 gr H :11.8 mm

1



238 Greek Coins. 4th - 1st century B.C. AE Reference: Condition:
Very Fine W :1.8 gr H :13.3 mm

1



239 Greek Coins. 4th - 1st century B.C. AE Reference: Condition:
Very Fine W :2.2 gr H :13 mm

1



240 Greek Coins. 4th - 1st century B.C. AE Reference: Condition:
Very Fine W :4.1 gr H :16.5 mm

1



241 Greek Coins. 4th - 1st century B.C. AE Reference: Condition:
Very Fine W :7.3 gr H :18.2 mm

1



242 Greek Coins. 4th - 1st century B.C. AE Reference: Condition:
Very Fine W :6.9 gr H :19.5 mm

1



243 Greek Coins. 4th - 1st century B.C. AE Reference: Condition:
Very Fine W :7.4 gr H :19.5 mm

1



244 Greek Coins. 4th - 1st century B.C. AE Reference: Condition:
Very Fine W :2 gr H :11.7 mm

1



245 Greek Coins. 4th - 1st century B.C. AE Reference: Condition:
Very Fine W :2.8 gr H :15 mm

1



246 Greek Coins. 4th - 1st century B.C. AE Reference: Condition:
Very Fine W :1.5 gr H :10.5 mm

1



247 Greek Coins. 4th - 1st century B.C. AE Reference: Condition:
Very Fine W :3.5 gr H :14.3 mm

1



248 Greek Coins. 4th - 1st century B.C. AE Reference: Condition:
Very Fine W :4.2 gr H :15.3 mm

1



249 Greek Coins. 4th - 1st century B.C. AE Reference: Condition:
Very Fine W :4.3 gr H :16.3 mm

1



250 Greek Coins. 4th - 1st century B.C. AE Reference: Condition:
Very Fine W :4 gr H :16 mm

1



251 Greek Coins. 4th - 1st century B.C. AE Reference: Condition:
Very Fine W :4.3 gr H :16.3 mm

1



252 Greek Coins. 4th - 1st century B.C. AE Reference: Condition:
Very Fine W :3.8 gr H :14 mm

1



253 Greek Coins. 4th - 1st century B.C. AE Reference: Condition:
Very Fine W :2.6 gr H :13.3 mm

1



254 Greek Coins. 4th - 1st century B.C. AE Reference: Condition:
Very Fine W :1.6 gr H :11.3 mm

1



255 Greek Coins. 4th - 1st century B.C. AE Reference: Condition:
Very Fine W :1.7 gr H :10.7 mm

1



256 Greek Coins. 4th - 1st century B.C. AE Reference: Condition:
Very Fine W :2.9 gr H :13.6 mm

1



257 Greek Coins. 4th - 1st century B.C. AE Reference: Condition:
Very Fine W :2.5 gr H :14 mm

1



258 Greek Coins. 4th - 1st century B.C. AE Reference: Condition:
Very Fine W :7.5 gr H :18.8 mm

1



259 Greek Coins. 4th - 1st century B.C. AE Reference: Condition:
Very Fine W :6.2 gr H :19.5 mm

1



260 Greek Coins. 4th - 1st century B.C. AE Reference: Condition:
Very Fine W :2.1 gr H :14 mm

1



261 Greek Coins. 4th - 1st century B.C. AE Reference: Condition:
Very Fine W :3.1 gr H :16 mm

1



262 Greek Coins. 4th - 1st century B.C. AE Reference: Condition:
Very Fine W :2.3 gr H :10.5 mm

1



263 Greek Coins. 4th - 1st century B.C. AE Reference: Condition:
Very Fine W :5.8 gr H :18.9 mm

1



264 Greek Coins. 4th - 1st century B.C. AE Reference: Condition:
Very Fine W :6.7 gr H :19.3 mm

1



265 Greek Coins. 4th - 1st century B.C. AE Reference: Condition:
Very Fine W :7.2 gr H :18.5 mm

1



266 Greek Coins. 4th - 1st century B.C. AE Reference: Condition:
Very Fine W :5 gr H :17.5 mm

1



267 Greek Coins. 4th - 1st century B.C. AE Reference: Condition:
Very Fine W :6.4 gr H :18.5 mm

1



268 Greek Coins. 4th - 1st century B.C. AE Reference: Condition:
Very Fine W :5.9 gr H :17.5 mm

1



269 Greek Coins. 4th - 1st century B.C. AE Reference: Condition:
Very Fine W :4.9 gr H :16.7 mm

1



270 Greek Coins. 4th - 1st century B.C. AE Reference: Condition:
Very Fine W :8.1 gr H :18.6 mm

1



271 Greek Coins. 4th - 1st century B.C. AE Reference: Condition:
Very Fine W :8.4 gr H :18.6 mm

1



272 Greek Coins. 4th - 1st century B.C. AE Reference: Condition:
Very Fine W :5 gr H :16.8 mm

1



273 Greek Coins. 4th - 1st century B.C. AE Reference: Condition:
Very Fine W :5 gr H :18 mm

1



274 Greek Coins. 4th - 1st century B.C. AE Reference: Condition:
Very Fine W :6.2 gr H :18 mm

1



275 Greek Coins. 4th - 1st century B.C. AE Reference: Condition:
Very Fine W :6 gr H :17.5 mm

1



276 Greek Coins. 4th - 1st century B.C. AE Reference: Condition:
Very Fine W :4.4 gr H :17.3 mm

1



277 Greek Coins. 4th - 1st century B.C. AE Reference: Condition:
Very Fine W :4.4 gr H :18.3 mm

1



278 Greek Coins. 4th - 1st century B.C. AE Reference: Condition:
Very Fine W :4.5 gr H :15.7 mm

1



279 Greek Coins. 4th - 1st century B.C. AE Reference: Condition:
Very Fine W :4.2 gr H :16 mm

1



280 Greek Coins. 4th - 1st century B.C. AE Reference: Condition:
Very Fine W :3 gr H :14.4 mm

1



281 Greek Coins. 4th - 1st century B.C. AE Reference: Condition:
Very Fine W :1.8 gr H :190.4 mm

1



282 Greek Coins. 4th - 1st century B.C. AE Reference: Condition:
Very Fine W :4.2 gr H :13.6 mm

1



283 Greek Coins. 4th - 1st century B.C. AE Reference: Condition:
Very Fine W :5.5 gr H :18 mm

1



284 Greek Coins. 4th - 1st century B.C. AE Reference: Condition:
Very Fine W :4.8 gr H :17.7 mm

1



285 Greek Coins. 4th - 1st century B.C. AE Reference: Condition:
Very Fine W :8.2 gr H :20.5 mm

1



286 Greek Coins. 4th - 1st century B.C. AE Reference: Condition:
Very Fine W :7.6 gr H :21.3 mm

1



287 Greek Coins. 4th - 1st century B.C. AE Reference: Condition:
Very Fine W :8.6 gr H :20.2 mm

1



288 Greek Coins. 4th - 1st century B.C. AE Reference: Condition:
Very Fine W :6.7 gr H :20.6 mm

1



289 Greek Coins. 4th - 1st century B.C. AE Reference: Condition:
Very Fine W :6.1 gr H :17.1 mm

1



290 Greek Coins. 4th - 1st century B.C. AE Reference: Condition:
Very Fine W :7.8 gr H :17.2 mm

1



291 Greek Coins. 4th - 1st century B.C. AE Reference: Condition:
Very Fine W :4.3 gr H :16.3 mm

1



292 Greek Coins. 4th - 1st century B.C. AE Reference: Condition:
Very Fine W :4.8 gr H :18.3 mm

1



293 Greek Coins. 4th - 1st century B.C. AE Reference: Condition:
Very Fine W :6.9 gr H :20.6 mm

1



294 Greek Coins. 4th - 1st century B.C. AE Reference: Condition:
Very Fine W :7.6 gr H :20 mm

1



295 Greek Coins. 4th - 1st century B.C. AE Reference: Condition:
Very Fine W :5.7 gr H :17.3 mm

1



296 Greek Coins. 4th - 1st century B.C. AE Reference: Condition:
Very Fine W :12 gr H :23.3 mm

1



297 Greek Coins. 4th - 1st century B.C. AE Reference: Condition:
Very Fine W :2.4 gr H :15.2 mm

1



298 Greek Coins. 4th - 1st century B.C. AE Reference: Condition:
Very Fine W :4.5 gr H :20 mm

1



299 Greek Coins. 4th - 1st century B.C. AE Reference: Condition:
Very Fine W :2.1 gr H :16.2 mm

1



300 Greek Coins. 4th - 1st century B.C. AE Reference: Condition:
Very Fine W :1.9 gr H :15.1 mm

1



301 Greek Coins. 4th - 1st century B.C. AE Reference: Condition:
Very Fine W :1.3 gr H :15.3 mm

1



302 Greek Coins. 4th - 1st century B.C. AE Reference: Condition:
Very Fine W :2.2 gr H :16 mm

1



303 Roman Provincial Coins. 1st - 4th Century AD. Ae.
Reference: Condition: Very Fine W :6.5 gr H :18.8 mm

1



304 Roman Provincial Coins. 1st - 4th Century AD. Ae.
Reference: Condition: Very Fine W :3.3 gr H :13.3 mm

1



305 Roman Provincial Coins. 1st - 4th Century AD. Ae.
Reference: Condition: Very Fine W :5.7 gr H :19.9 mm

1



306 Roman Provincial Coins. 1st - 4th Century AD. Ae.
Reference: Condition: Very Fine W :4.5 gr H :18.1 mm

1



307 Roman Provincial Coins. 1st - 4th Century AD. Ae.
Reference: Condition: Very Fine W :10.8 gr H :25.2 mm

1



308 Roman Provincial Coins. 1st - 4th Century AD. Ae.
Reference: Condition: Very Fine W :5.2 gr H :19.5 mm

1



309 Roman Provincial Coins. 1st - 4th Century AD. Ae.
Reference: Condition: Very Fine W :4.3 gr H :19.3 mm

1



310 Roman Provincial Coins. 1st - 4th Century AD. Ae.
Reference: Condition: Very Fine W :8.6 gr H :23.6 mm

1



311 Roman Provincial Coins. 1st - 4th Century AD. Ae.
Reference: Condition: Very Fine W :4.2 gr H :19.2 mm

1



312 Roman Provincial Coins. 1st - 4th Century AD. Ae.
Reference: Condition: Very Fine W :2.6 gr H :17.7 mm

1



313 Roman Provincial Coins. 1st - 4th Century AD. Ae.
Reference: Condition: Very Fine W :2.1 gr H :15.7 mm

1



314 Roman Provincial Coins. 1st - 4th Century AD. Ae.
Reference: Condition: Very Fine W :2.3 gr H :15.4 mm

1



315 Roman Provincial Coins. 1st - 4th Century AD. Ae.
Reference: Condition: Very Fine W :4.9 gr H :18 mm

1



316 Roman Provincial Coins. 1st - 4th Century AD. Ae.
Reference: Condition: Very Fine W :3.6 gr H :16 mm

1



317 Roman Provincial Coins. 1st - 4th Century AD. Ae.
Reference: Condition: Very Fine W :5.2 gr H :22.6 mm

1



318 Roman Provincial Coins. 1st - 4th Century AD. Ae.
Reference: Condition: Very Fine W :5.2 gr H :21.2 mm

1



319 Roman Provincial Coins. 1st - 4th Century AD. Ae.
Reference: Condition: Very Fine W :2.5 gr H :15.3 mm

1



320 Roman Provincial Coins. 1st - 4th Century AD. Ae.
Reference: Condition: Very Fine W :4 gr H :17.5 mm

1



321 Roman Provincial Coins. 1st - 4th Century AD. Ae.
Reference: Condition: Very Fine W :2.5 gr H :15.5 mm

1



322 Roman Provincial Coins. 1st - 4th Century AD. Ae.
Reference: Condition: Very Fine W :2.8 gr H :15.7 mm

1



323 Roman Provincial Coins. 1st - 4th Century AD. Ae.
Reference: Condition: Very Fine W :3.5 gr H :16.8 mm

1



324 Roman Provincial Coins. 1st - 4th Century AD. Ae.
Reference: Condition: Very Fine W :3.6 gr H :17 mm

1



325 Roman Provincial Coins. 1st - 4th Century AD. Ae.
Reference: Condition: Very Fine W :2.4 gr H :15.5 mm

1



326 Roman Provincial Coins. 1st - 4th Century AD. Ae.
Reference: Condition: Very Fine W :2.6 gr H :15.6 mm

1



327 Roman Provincial Coins. 1st - 4th Century AD. Ae.
Reference: Condition: Very Fine W :2.2 gr H :16.4 mm

1



328 Roman Provincial Coins. 1st - 4th Century AD. Ae.
Reference: Condition: Very Fine W :2.3 gr H :14.5 mm

1



329 Roman Provincial Coins. 1st - 4th Century AD. Ae.
Reference: Condition: Very Fine W :3.2 gr H :15.9 gr

1



330 Roman Provincial Coins. 1st - 4th Century AD. Ae.
Reference: Condition: Very Fine W :4.3 gr H :15.7 mm

1



331 Roman Provincial Coins. 1st - 4th Century AD. Ae.
Reference: Condition: Very Fine W :3.4 gr H :14.7 mm

1



332 Roman Provincial Coins. 1st - 4th Century AD. Ae.
Reference: Condition: Very Fine W :3.7 gr H :14.3 mm

1



333 Roman Provincial Coins. 1st - 4th Century AD. Ae.
Reference: Condition: Very Fine W :3.2 gr H :17 mm

1



334 Roman Provincial Coins. 1st - 4th Century AD. Ae.
Reference: Condition: Very Fine W :3.5 gr H :14.7 mm

1



335 Roman Provincial Coins. 1st - 4th Century AD. Ae.
Reference: Condition: Very Fine W :3.5 gr H :14.4 mm

1



336 Roman Provincial Coins. 1st - 4th Century AD. Ae.
Reference: Condition: Very Fine W :2.9 gr H :18 mm

1



337 Roman Provincial Coins. 1st - 4th Century AD. Ae.
Reference: Condition: Very Fine W :4 gr H :18.7 mm

1



338 Roman Provincial Coins. 1st - 4th Century AD. Ae.
Reference: Condition: Very Fine W :5 gr H :20 mm

1



339 Roman Provincial Coins. 1st - 4th Century AD. Ae.
Reference: Condition: Very Fine W :5.5 gr H :25.7 mm

1



340 Roman Provincial Coins. 1st - 4th Century AD. Ae.
Reference: Condition: Very Fine W :3.2 gr H :16 mm

1



341 Roman Provincial Coins. 1st - 4th Century AD. Ae.
Reference: Condition: Very Fine W :2.3 gr H :15.5 mm

1



342 Roman Provincial Coins. 1st - 4th Century AD. Ae.
Reference: Condition: Very Fine W :3.3 gr H :16.4 mm

1



343 Roman Provincial Coins. 1st - 4th Century AD. Ae.
Reference: Condition: Very Fine W :3.3 gr H :16.8 mm

1



344 Roman Provincial Coins. 1st - 4th Century AD. Ae.
Reference: Condition: Very Fine W :2.1 gr H :13 mm

1



345 Roman Provincial Coins. 1st - 4th Century AD. Ae.
Reference: Condition: Very Fine W :3.5 gr H :17.4 mm

1



346 Roman Provincial Coins. 1st - 4th Century AD. Ae.
Reference: Condition: Very Fine W :3 gr H :16.3 mm

1



347 Roman Provincial Coins. 1st - 4th Century AD. Ae.
Reference: Condition: Very Fine W :1.9 gr H :14 mm

1



348 Roman Provincial Coins. 1st - 4th Century AD. Ae.
Reference: Condition: Very Fine W :3.2 gr H :15.7 mm

1



349 Roman Provincial Coins. 1st - 4th Century AD. Ae.
Reference: Condition: Very Fine W :4.2 gr H :16.3 mm

1



350 Roman Provincial Coins. 1st - 4th Century AD. Ae.
Reference: Condition: Very Fine W :3.8 gr H :19.3 mm

1



351 Roman Provincial Coins. 1st - 4th Century AD. Ae.
Reference: Condition: Very Fine W :2.4 gr H :14 mm

1



352 Roman Provincial Coins. 1st - 4th Century AD. Ae.
Reference: Condition: Very Fine W :4.7 gr H :18.6 mm

1



353 Roman Provincial Coins. 1st - 4th Century AD. Ae.
Reference: Condition: Very Fine W :5.2 fe H :18.2 mm

1



354 Roman Provincial Coins. 1st - 4th Century AD. Ae.
Reference: Condition: Very Fine W :5 gr H :19.3 mm

1



355 Roman Provincial Coins. 1st - 4th Century AD. Ae.
Reference: Condition: Very Fine W :3.8 gr H :18.3 mm

1



356 Roman Provincial Coins. 1st - 4th Century AD. Ae.
Reference: Condition: Very Fine W :3.9 gr H :16.6 mm

1



357 Roman Provincial Coins. 1st - 4th Century AD. Ae.
Reference: Condition: Very Fine W :6.9 gr H :18.7 mm

1



358 Roman Provincial Coins. 1st - 4th Century AD. Ae.
Reference: Condition: Very Fine W :5.6 gr H :18.7 mm

1



359 Roman Provincial Coins. 1st - 4th Century AD. Ae.
Reference: Condition: Very Fine W :1.7 gr H :11.7 mm

1



360 Roman Provincial Coins. 1st - 4th Century AD. Ae.
Reference: Condition: Very Fine W :3.4 gr H :18 mm

1



361 Roman Provincial Coins. 1st - 4th Century AD. Ae.
Reference: Condition: Very Fine W :7 gr H :20.7 mm

1



362 Roman Provincial Coins. 1st - 4th Century AD. Ae.
Reference: Condition: Very Fine W :4.2 gr H :19 mm

1



363 Roman Provincial Coins. 1st - 4th Century AD. Ae.
Reference: Condition: Very Fine W :6.7 gr H :20.4 mm

1



364 Roman Provincial Coins. 1st - 4th Century AD. Ae.
Reference: Condition: Very Fine W :2.8 gr H :18 mm

1



365 Roman Provincial Coins. 1st - 4th Century AD. Ae.
Reference: Condition: Very Fine W :23.2 gr H :32.2 mm

1



366 Roman Provincial Coins. 1st - 4th Century AD. Ae.
Reference: Condition: Very Fine W :17.5 gr H :30.5 mm

1



367 Roman Provincial Coins. 1st - 4th Century AD. Ae.
Reference: Condition: Very Fine W :15 gr H :28.3 mm

1



368 Roman Provincial Coins. 1st - 4th Century AD. Ae.
Reference: Condition: Very Fine W :10.8 gr H :28.8 mm

1



369 Roman Provincial Coins. 1st - 4th Century AD. Ae.
Reference: Condition: Very Fine W :15.3 gr H :31.7 mm

1



370 Roman Provincial Coins. 1st - 4th Century AD. Ae.
Reference: Condition: Very Fine W :11.5 gr H :27.7 mm

1



371 Roman Provincial Coins. 1st - 4th Century AD. Ae.
Reference: Condition: Very Fine W :7.2 gr H :21.3 mm

1



372 Roman Provincial Coins. 1st - 4th Century AD. Ae.
Reference: Condition: Very Fine W :8.7 gr H :25 mm

1



373 Roman Provincial Coins. 1st - 4th Century AD. Ae.
Reference: Condition: Very Fine W :16 gr H :29 mm

1



374 Roman Provincial Coins. 1st - 4th Century AD. Ae.
Reference: Condition: Very Fine W :11.2 gr H :29 mm

1



375 Roman Provincial Coins. 1st - 4th Century AD. Ae.
Reference: Condition: Very Fine W :22 gr H :33.8 mm

1



376 Roman Provincial Coins. 1st - 4th Century AD. Ae.
Reference: Condition: Very Fine W :5.7 gr H :23.8 mm

1



377 Roman Provincial Coins. 1st - 4th Century AD. Ae.
Reference: Condition: Very Fine W :12.2 gr H :26.5 mm

1



378 Roman Provincial Coins. 1st - 4th Century AD. Ae.
Reference: Condition: Very Fine W :4.2 gr H :19.4 mm

1



379 Roman Provincial Coins. 1st - 4th Century AD. Ae.
Reference: Condition: Very Fine W :10.4 gr H :27 mm

1



380 Roman Provincial Coins. 1st - 4th Century AD. Ae.
Reference: Condition: Very Fine W :6.4 gr H :23 mm

1



381 Roman Provincial Coins. 1st - 4th Century AD. Ae.
Reference: Condition: Very Fine W :4.9 gr H :19 mm

1



382 Roman Provincial Coins. 1st - 4th Century AD. Ae.
Reference: Condition: Very Fine W :9.5 gr H :24.8 mm

1



383 Roman Provincial Coins. 1st - 4th Century AD. Ae.
Reference: Condition: Very Fine W :9.6 gr H :22.3 mm

1



384 Roman Provincial Coins. 1st - 4th Century AD. Ae.
Reference: Condition: Very Fine W :11.7 gr H :24 mm

1



385 Roman Provincial Coins. 1st - 4th Century AD. Ae.
Reference: Condition: Very Fine W :8.1 gr H :28 mm

1



386 Roman Provincial Coins. 1st - 4th Century AD. Ae.
Reference: Condition: Very Fine W :23 gr H :35.6 mm

1



387 Roman Provincial Coins. 1st - 4th Century AD. Ae.
Reference: Condition: Very Fine W :6.1 gr H :23.3 mm

1



388 Roman Provincial Coins. 1st - 4th Century AD. Ae.
Reference: Condition: Very Fine W :6.2 gr H :17.5 mm

1



389 Roman Provincial Coins. 1st - 4th Century AD. Ae.
Reference: Condition: Very Fine W :7.6 gr H :19.7 mm

1



390 Roman Provincial Coins. 1st - 4th Century AD. Ae.
Reference: Condition: Very Fine W :8.8 gr H :22 mm

1



391 Roman Provincial Coins. 1st - 4th Century AD. Ae.
Reference: Condition: Very Fine W :1 gr H :13.8 mm

1



392 Roman Provincial Coins. 1st - 4th Century AD. Ae.
Reference: Condition: Very Fine W :1.4 gr H :14.6 mm

1



393 Roman Provincial Coins. 1st - 4th Century AD. Ae.
Reference: Condition: Very Fine W :1.3 gr H :14.2 mm

1



394 Roman Provincial Coins. 1st - 4th Century AD. Ae.
Reference: Condition: Very Fine W :1.4 gr H :13.6 mm

1



395 Roman Provincial Coins. 1st - 4th Century AD. Ae.
Reference: Condition: Very Fine W :1.4 gr H :14.3 mm

1



396 Roman Provincial Coins. 1st - 4th Century AD. Ae.
Reference: Condition: Very Fine W :1.6 gr H :14.3 mm

1



397 Roman Provincial Coins. 1st - 4th Century AD. Ae.
Reference: Condition: Very Fine W :1.1 gr H :15 mm

1



398 Roman Provincial Coins. 1st - 4th Century AD. Ae.
Reference: Condition: Very Fine W :1.8 gr H :14 mm

1



399 Roman Provincial Coins. 1st - 4th Century AD. Ae.
Reference: Condition: Very Fine W :1.8 gr H :14.5 mm

1



400 Roman Provincial Coins. 1st - 4th Century AD. Ae.
Reference: Condition: Very Fine W :1.6 gr H :14.4 mm

1



401 Roman Provincial Coins. 1st - 4th Century AD. Ae.
Reference: Condition: Very Fine W :1.6 gr H :13.2 mm

1



402 Roman Provincial Coins. 1st - 4th Century AD. Ae.
Reference: Condition: Very Fine W :1.1 gr H :13.6 mm

1



403 Roman Provincial Coins. 1st - 4th Century AD. Ae.
Reference: Condition: Very Fine W :8 gr H :20.5 mm

1



404 Roman Provincial Coins. 1st - 4th Century AD. Ae.
Reference: Condition: Very Fine W :1 gr H :11 mm

1



405 Roman Provincial Coins. 1st - 4th Century AD. Ae.
Reference: Condition: Very Fine W :5.7 gr H :19 mm

1



406 Roman Provincial Coins. 1st - 4th Century AD. Ae.
Reference: Condition: Very Fine W :6.7 gr H :23 mm

1



407 Roman Provincial Coins. 1st - 4th Century AD. Ae.
Reference: Condition: Very Fine W :13.5 gr H :28 mm

1



408 Roman Provincial Coins. 1st - 4th Century AD. Ae.
Reference: Condition: Very Fine W :14.1 gr H :28.3 mm

1



409 Roman Provincial Coins. 1st - 4th Century AD. Ae.
Reference: Condition: Very Fine W :20.2 gr H :31.2 mm

1



410 Roman Provincial Coins. 1st - 4th Century AD. Ae.
Reference: Condition: Very Fine W :13.5 gr H :27.3 mm

1



411 Roman Provincial Coins. 1st - 4th Century AD. Ae.
Reference: Condition: Very Fine W :11.8 gr H :23.8 mm

1



412 Roman Provincial Coins. 1st - 4th Century AD. Ae.
Reference: Condition: Very Fine W :15.4 gr H :31 mm

1



413 Roman Provincial Coins. 1st - 4th Century AD. Ae.
Reference: Condition: Very Fine W :18.2 gr H :32.2 mm

1



414 Roman Provincial Coins. 1st - 4th Century AD. Ae.
Reference: Condition: Very Fine W :17.7 gr H :29.5 mm

1



415 Roman Provincial Coins. 1st - 4th Century AD. Ae.
Reference: Condition: Very Fine W :7.6 gr H :20 mm

1



416 Roman Provincial Coins. 1st - 4th Century AD. Ae.
Reference: Condition: Very Fine W :6.2 gr H :22.5 mm

1



417 Roman Provincial Coins. 1st - 4th Century AD. Ae.
Reference: Condition: Very Fine W :8.5 gr H :24.6 mm

1



418 Roman Provincial Coins. 1st - 4th Century AD. Ae.
Reference: Condition: Very Fine W :7.3 gr H :22.3 mm

1



419 Roman Provincial Coins. 1st - 4th Century AD. Ae.
Reference: Condition: Very Fine W :6.8 gr H :23.4 mm

1



420 Roman Provincial Coins. 1st - 4th Century AD. Ae.
Reference: Condition: Very Fine W :4.4 gr H :22 mm

1



421 Roman Provincial Coins. 1st - 4th Century AD. Ae.
Reference: Condition: Very Fine W :7.4 gr H :23.2 mm

1



422 Roman Provincial Coins. 1st - 4th Century AD. Ae.
Reference: Condition: Very Fine W :5 gr H :23.2 mm

1



423 Roman Provincial Coins. 1st - 4th Century AD. Ae.
Reference: Condition: Very Fine W :2.5 gr H :17 mm

1



424 Roman Provincial Coins. 1st - 4th Century AD. Ae.
Reference: Condition: Very Fine W :14.3 gr H :27.7 mm

1



425 Roman Provincial Coins. 1st - 4th Century AD. Ae.
Reference: Condition: Very Fine W :11 gr H :26 mm

1



426 Roman Provincial Coins. 1st - 4th Century AD. Ae.
Reference: Condition: Very Fine W :11.3 gr H :26 mm

1



427 Roman Provincial Coins. 1st - 4th Century AD. Ae.
Reference: Condition: Very Fine W :12.8 gr H :24 mm

1



428 Roman Provincial Coins. 1st - 4th Century AD. Ae.
Reference: Condition: Very Fine W :14.9 gr H :24 mm

1



429 Roman Provincial Coins. 1st - 4th Century AD. Ae.
Reference: Condition: Very Fine

1



430 Roman Provincial Coins. 1st - 4th Century AD. Ae.
Reference: Condition: Very Fine

1



431 Roman Provincial Coins. 1st - 4th Century AD. Ae.
Reference: Condition: Very Fine

1



432 Roman Provincial Coins. 1st - 4th Century AD. Ae.
Reference: Condition: Very Fine

1



433 Roman Provincial Coins. 1st - 4th Century AD. Ae.
Reference: Condition: Very Fine

1



434 Roman Provincial Coins. 1st - 4th Century AD. Ae.
Reference: Condition: Very Fine

1



435 Roman Provincial Coins. 1st - 4th Century AD. Ae.
Reference: Condition: Very Fine

1



436 Roman Provincial Coins. 1st - 4th Century AD. Ae.
Reference: Condition: Very Fine

1



437 Roman Provincial Coins. 1st - 4th Century AD. Ae.
Reference: Condition: Very Fine

1



438 Roman Provincial Coins. 1st - 4th Century AD. Ae.
Reference: Condition: Very Fine

1



439 Septimius Severus. A.D. 193-211. AR denarius Reference:
Condition: Very Fine W :3.5 gr H :18.9 gr

1



440 Septimius Severus. A.D. 193-211. AR denarius Reference:
Condition: Very Fine W :2.7 gr H :18.4 mm

1



441 Septimius Severus. A.D. 193-211. AR denarius Reference:
Condition: Very Fine W :3.6 gr H :15.7 mm

1



442 Septimius Severus. A.D. 193-211. AR denarius Reference:
Condition: Very Fine W :2.6 gr H :16.8 mm

1



443 Septimius Severus. A.D. 193-211. AR denarius Reference:
Condition: Very Fine W :3.2 gr H :15.3 mm

1



444 Septimius Severus. A.D. 193-211. AR denarius Reference:
Condition: Very Fine W :3.4 gr H :15.5 mm

1



445 Domitian. A.D. 81-96. AR denarius Reference: Condition:
Very Fine W :2.4 gr H :17 mm

1



446 Divus Antoninus Pius. Died A.D. 161. AR denarius
Reference: Condition: Very Fine W :3.1 gr H :17.7 mm

1



447 Divus Antoninus Pius. Died A.D. 161. AR denarius
Reference: Condition: Very Fine W :3.5 gr H :18.4 mm

1



448 Trajan. A.D. 98-117. AR denarius Reference: Condition: Very
Fine W :2.9 gr H :18 mm

1



449 JULIA DOMNA, wife of Severus, d. 217 AD. AR Denarius
Reference: Condition: Very Fine W :2.5 gr H :17.3 mm

1



450 JULIA DOMNA, wife of Severus, d. 217 AD. AR Denarius
Reference: Condition: Very Fine W :2.1 gr H :17.1 mm

1



451 Geta. As Caesar, A.D. 198-209. AR denarius Reference:
Condition: Very Fine W :3.4 gr H :18.5 mm

1



452 Caracalla. A.D. 198-217. AR denarius Reference: Condition:
Very Fine W :2.3 gr H :19 mm

1



453 Trajan. A.D. 98-117. AR denarius Reference: Condition: Very
Fine W :3.3 gr H :20 mm

1



454 Trajan. A.D. 98-117. AR denarius Reference: Condition: Very
Fine W :2.6 gr H :18.5 mm

1



455 Faustina II. Augusta, A.D. 147-175. AR denarius Reference:
Condition: Very Fine W :3.3 gr H :17.6 mm

1



456 Otacilia Severa. Augusta, A.D. 244-249. AR antoninianus
Reference: Condition: Very Fine W :3.5 gr H :21.3 mm

1



457 Philip I. A.D. 244-249. AR antoninianus Reference:
Condition: Very Fine W :3.4 gr H :22 mm

1



458 Trajan Decius. A.D. 249-251. AR antoninianus Reference:
Condition: Very Fine W :3.9 gr H :20.6 mm

1



459 Trajan Decius. A.D. 249-251. AR antoninianus Reference:
Condition: Very Fine W :4 gr H :22.9 mm

1



460 Valerian I. A.D. 253-260. AR antoninianus Reference:
Condition: Very Fine W :3.2 gr H :22.3 mm

1



461 Valerian I. A.D. 253-260. AR antoninianus Reference:
Condition: Very Fine W :3.3 gr H :22.3 mm

1



462 Valerian I. A.D. 253-260. AR antoninianus Reference:
Condition: Very Fine W :3.8 gr H :21 mm

1



463 Valerian I. A.D. 253-260. AR antoninianus Reference:
Condition: Very Fine W :4 gr H :23.4 mm

1



464 Valerian I. A.D. 253-260. AR antoninianus Reference:
Condition: Very Fine W :4 gr H :23.5 mm

1



465 Valerian I. A.D. 253-260. AR antoninianus Reference:
Condition: Very Fine W :3.1 gr H :21.5 mm

1



466 Valerian I. A.D. 253-260. AR antoninianus Reference:
Condition: Very Fine W :2.9 gr H :22.2 mm

1



467 TREBONIANUS GALLUS, 251-253 AD. AR Antoninianus
Reference: Condition: Very Fine W :3.5 gr H :20 mm

1



468 Saloninus. As Caesar, A.D. 255-259. Antoninianus
Reference: Condition: Very Fine W :3.6 gr H :21.8 mm

1



469 Gallienus. A.D. 253-268. AR antoninianus Reference:
Condition: Very Fine W :4.5 gr H :21.7 mm

1



470 Gallienus. A.D. 253-268. AR antoninianus Reference:
Condition: Very Fine W :3.5 gr H :21.6 mm

1



471 Gallienus. A.D. 253-268. AR antoninianus Reference:
Condition: Very Fine W :3.7 gr H :21.8 mm

1



472 Gallienus. A.D. 253-268. AR antoninianus Reference:
Condition: Very Fine W :3 gr H :18.7 mm

1



473 Gallienus. A.D. 253-268. AR antoninianus Reference:
Condition: Very Fine W :3.3 gr H :19.6 mm

1



474 Aemilian. A.D. 253. AR antoninianus Reference: Condition:
Very Fine W :3.3 gr H :20 mm

1



475 TREBONIANUS GALLUS, 251-253 AD. AR Antoninianus
Reference: Condition: Very Fine W :3.8 gr H :21.4 mm

1



476 Saloninus. As Caesar, A.D. 255-259. Antoninianus
Reference: Condition: Very Fine W :2.6 gr H :24 mm

1



477 Salonina. Augusta, A.D. 254-268. AE antoninianus
Reference: Condition: Very Fine W :3.5 mm H :20 mm

1



478 Salonina. Augusta, A.D. 254-268. AE antoninianus
Reference: Condition: Very Fine W :2.3 gr H :20 mm

1



479 Salonina. Augusta, A.D. 254-268. AE antoninianus
Reference: Condition: Very Fine W :3.9 gr H :22.4 mm

1



480 Salonina. Augusta, A.D. 254-268. AE antoninianus
Reference: Condition: Very Fine W :3.3 gr H :22 mm

1



481 Salonina. Augusta, A.D. 254-268. AE antoninianus
Reference: Condition: Very Fine W :4.1 gr H :22 mm

1



482 Salonina. Augusta, A.D. 254-268. AE antoninianus
Reference: Condition: Very Fine W :3.1 gr H :19.2 mm

1



483 Carus. A.D. 282-283. AE antoninianus Reference: Condition:
Very Fine W :3.4 gr H :21.3 mm

1



484 Carinus. A.D. 283-285. AE antoninianus Reference:
Condition: Very Fine W :3.3 gr H :20.3 mm

1



485 Aurelian. A.D. 270-275. AE antoninianus Reference:
Condition: Very Fine W :3.3 gr H :21.6 mm

1



486 Aurelian. A.D. 270-275. AE antoninianus Reference:
Condition: Very Fine W :4 gr H :22 mm

1



487 Probus. A.D. 276-282. AE antoninianus Reference:
Condition: Very Fine W :4.4 gr H :22.6 mm

1



488 Probus. A.D. 276-282. AE antoninianus Reference:
Condition: Very Fine W :4.1 gr H :22 mm

1



489 Probus. A.D. 276-282. AE antoninianus Reference:
Condition: Very Fine W :4.8 gr H :24.2 mm

1



490 Probus. A.D. 276-282. AE antoninianus Reference:
Condition: Very Fine W :3.4 gr H :21.5 mm

1



491 Probus. A.D. 276-282. AE antoninianus Reference:
Condition: Very Fine W :3.5 gr H :21.7 mm

1



492 Probus. A.D. 276-282. AE antoninianus Reference:
Condition: Very Fine W :4 gr H :20 mm

1



493 Gallienus. A.D. 253-268. AE antoninianus Reference:
Condition: Very Fine W :4 gr H :18 mm

1



494 Gallienus. A.D. 253-268. AE antoninianus Reference:
Condition: Very Fine W :3 gr H :19.4 mm

1



495 Gallienus. A.D. 253-268. AE antoninianus Reference:
Condition: Very Fine W :3.8 gr H :23.3 mm

1



496 Gallienus. A.D. 253-268. AE antoninianus Reference:
Condition: Very Fine W :3.8 gr H :21 mm

1



497 Gallienus. A.D. 253-268. AE antoninianus Reference:
Condition: Very Fine W :2.5 gr H :22.3 mm

1



498 Gallienus. A.D. 253-268. AE antoninianus Reference:
Condition: Very Fine W :3.7 gr H :19.7 mm

1



499 Gallienus. A.D. 253-268. AE antoninianus Reference:
Condition: Very Fine W :3.5 gr H :22.8 mm

1



500 Gallienus. A.D. 253-268. AE antoninianus Reference:
Condition: Very Fine W :3.7 gr H :18.9 mm

1



501 Gallienus. A.D. 253-268. AE antoninianus Reference:
Condition: Very Fine W :2.7 gr H :20 mm

1



502 Divus Claudius II Gothicus. Died A.D. 270. AE antoninianus
Reference: Condition: Very Fine W :3.5 gr H :19.5 mm

1



503 Divus Claudius II Gothicus. Died A.D. 270. AE antoninianus
Reference: Condition: Very Fine W :4.2 gr H :21 mm

1



504 Divus Claudius II Gothicus. Died A.D. 270. AE antoninianus
Reference: Condition: Very Fine W :3.8 gr H :19 mm

1



505 Divus Claudius II Gothicus. Died A.D. 270. AE antoninianus
Reference: Condition: Very Fine W :2.7 gr H :22.7 mm

1



506 Divus Claudius II Gothicus. Died A.D. 270. AE antoninianus
Reference: Condition: Very Fine W :3.6 gr H :19.6 mm

1



507 Divus Claudius II Gothicus. Died A.D. 270. AE antoninianus
Reference: Condition: Very Fine W :3 gr H :18.3mm

1



508 Divus Claudius II Gothicus. Died A.D. 270. AE antoninianus
Reference: Condition: Very Fine W :1.3 gr H :13mm

1



509 Divus Claudius II Gothicus. Died A.D. 270. AE antoninianus
Reference: Condition: Very Fine W :1.1 gr H :10.1 mm

1



510 Diocletian. A.D. 284-305. AE antoninianus Reference:
Condition: Very Fine W :3.5 gr H :20 .6 mm

1



511 Diocletian. A.D. 284-305. AE antoninianus Reference:
Condition: Very Fine W :2.7 gr H :21.5 mm

1



512 Diocletian. A.D. 284-305. AE antoninianus Reference:
Condition: Very Fine W :3.2 gr H :22.6 mm

1



513 Diocletian. A.D. 284-305. AE antoninianus Reference:
Condition: Very Fine W :2.9 gr H :23.2 mm

1



514 Diocletian. A.D. 284-305. AE antoninianus Reference:
Condition: Very Fine W :4 gr H :19.6 mm

1



515 Diocletian. A.D. 284-305. AE antoninianus Reference:
Condition: Very Fine W :3 gr H :19.5 mm

1



516 Diocletian. A.D. 284-305. AE antoninianus Reference:
Condition: Very Fine W :3.4 gr H :20.1 mm

1



517 Diocletian. A.D. 284-305. AE antoninianus Reference:
Condition: Very Fine W :4.4 gr H :22.3 mm

1



518 Diocletian. A.D. 284-305. AE antoninianus Reference:
Condition: Very Fine W :3.5 gr H :21 mm

1



519 Diocletian. A.D. 284-305. AE antoninianus Reference:
Condition: Very Fine W :3.9 gr H :21.1 mm

1



520 Maximianus. A.D. 286-305. AE antoninianus Reference:
Condition: Very Fine W :2.9 gr H :20.7 mm

1



521 Maximianus. A.D. 286-305. AE antoninianus Reference:
Condition: Very Fine W :4.1 gr H :20.7 mm

1



522 Maximianus. A.D. 286-305. AE antoninianus Reference:
Condition: Very Fine W :2.4 gr H :22.1mm

1



523 Maximianus. A.D. 286-305. AE antoninianus Reference:
Condition: Very Fine W :5 gr H :20.6mm

1



524 Maximianus. A.D. 286-305. AE antoninianus Reference:
Condition: Very Fine W :3.2 gr H :22 mm

1



525 Maximianus. A.D. 286-305. AE antoninianus Reference:
Condition: Very Fine W :3.1 gr H :20.3 mm

1



526 Maximianus. A.D. 286-305. AE antoninianus Reference:
Condition: Very Fine W :3 gr H :19.8 mm

1



527 Maximianus. A.D. 286-305. AE antoninianus Reference:
Condition: Very Fine W :3.1 gr H :19.8 mm

1



528 Maximianus. A.D. 286-305. AE antoninianus Reference:
Condition: Very Fine W :3.3 gr H :20.4 mm

1



529 Maximianus. A.D. 286-305. AE antoninianus Reference:
Condition: Very Fine W :2.8 gr H :21.3mm

1



530 Maximianus. A.D. 286-305. AE Follis Reference: Condition:
Very Fine W :6.2 gr H :27 mm

1



531 Maximianus. A.D. 286-305. AE Follis Reference: Condition:
Very Fine W :10.4 gr H :26.2mm

1



532 Maximianus. A.D. 286-305. AE Follis Reference: Condition:
Very Fine W :4.9 gr H :24 mm

1



533 Maximianus. A.D. 286-305. AE Follis Reference: Condition:
Very Fine W :7 gr H :24.8 mm

1



534 Maxentius. AD 306-312. AE Follis Reference: Condition:
Very Fine W :7gr H :25.7 mm

1



535 Constantine I. A.D. 307/10-337. AE follis Reference:
Condition: Very Fine W :3.3 gr H :19.2 mm

1



536 Constantine I. A.D. 307/10-337. AE follis Reference:
Condition: Very Fine W :2.8 gr H :19 mm

1



537 Constantine I. A.D. 307/10-337. AE follis Reference:
Condition: Very Fine W :2.6 gr H :18.1mm

1



538 Constantine I. A.D. 307/10-337. AE follis Reference:
Condition: Very Fine W :2.7 gr H :19.8 mm

1



539 Constantine I. A.D. 307/10-337. AE follis Reference:
Condition: Very Fine W :3 gr H :20.3 mm

1



540 Constantine I. A.D. 307/10-337. AE follis Reference:
Condition: Very Fine W : 4 gr H :19,4 mm

1



541 Constantine I. A.D. 307/10-337. AE follis Reference:
Condition: Very Fine W :4 gr H :22.4mm

1



542 Constantine I. A.D. 307/10-337. AE follis Reference:
Condition: Very Fine W :2.7 gr H :19.6 mm

1



543 Constantine I. A.D. 307/10-337. AE follis Reference:
Condition: Very Fine W :3.6 gr H :19.6mm

1



544 Constantine I. A.D. 307/10-337. AE follis Reference:
Condition: Very Fine W :2.6 gr H :17.1mm

1



545 Constantine I. A.D. 307/10-337. AE follis Reference:
Condition: Very Fine W :3.3 gr H :19.1mm

1



546 Constantine I. A.D. 307/10-337. AE follis Reference:
Condition: Very Fine W :2.3 gr H :16.1mm

1



547 Constantine I. A.D. 307/10-337. AE follis Reference:
Condition: Very Fine W :3.6 gr H :18.5 mm

1



548 Constantine I. A.D. 307/10-337. AE follis Reference:
Condition: Very Fine W :2 gr H :14mm

1



549 Constantine I. A.D. 307/10-337. AE follis Reference:
Condition: Very Fine W :2.3 gr H :17.3 mm

1



550 Constantine I. A.D. 307/10-337. AE follis Reference:
Condition: Very Fine W :2.6 gr H :17.3mm

1



551 Constantine I. A.D. 307/10-337. AE follis Reference:
Condition: Very Fine W :2.3 gr H :18.9 mm

1



552 Constantine I. A.D. 307/10-337. AE follis Reference:
Condition: Very Fine W :2.5 gr H :16.7 mm

1



553 Constantine I. A.D. 307/10-337. AE follis Reference:
Condition: Very Fine W :2 gr H :16.6 mm

1



554 Constantine I. A.D. 307/10-337. AE follis Reference:
Condition: Very Fine W :1.3 gr H :15mm

1



555 Constantine I. A.D. 307/10-337. AE follis Reference:
Condition: Very Fine W :1.9 gr H :13.7 mm

1



556 Constantine I. A.D. 307/10-337. AE follis Reference:
Condition: Very Fine W :2.2 gr H :13.9 mm

1



557 Constantine I. A.D. 307/10-337. AE follis Reference:
Condition: Very Fine W :3.6 gr H :20.3 mm

1



558 Constantine I. A.D. 307/10-337. AE follis Reference:
Condition: Very Fine W :3.3 gr H :19.1 mm

1



559 Constantine I. A.D. 307/10-337. AE follis Reference:
Condition: Very Fine W :2.7 gr H :18.1 mm

1



560 Constantine I. A.D. 307/10-337. AE follis Reference:
Condition: Very Fine W :2.1 gr H :16.8 mm

1



561 Constantine I. A.D. 307/10-337. AE follis Reference:
Condition: Very Fine W :1.8 gr H :15.3 mm

1



562 Constantine I. A.D. 307/10-337. AE follis Reference:
Condition: Very Fine W :1.7 gr H :14.6 mm

1



563 CONSTANTIUS II, 337-361 AD. Ae Reference: Condition:
Very Fine W :2.2 gr H :15.1mm

1



564 CONSTANTIUS II, 337-361 AD. Ae Reference: Condition:
Very Fine W :2.2 gr H :16.5 mm

1



565 CONSTANTIUS II, 337-361 AD. Ae Reference: Condition:
Very Fine W :2.3 gr H :17.8 mm

1



566 Constantine II. As Caesar, A.D. 317-337. AE Reference:
Condition: Very Fine W :2.8 gr H :16.6 mm

1



567 Constantine II. As Caesar, A.D. 317-337. AE Reference:
Condition: Very Fine W :1.8 gr H :14.2 mm

1



568 Constantine I. A.D. 307/10-337. AE follis Reference:
Condition: Very Fine W :1.8 gr H :12.8 mm

1



569 Constantine I. A.D. 307/10-337. AE follis Reference:
Condition: Very Fine W :1.8 gr H :14.4 mm

1



570 CONSTANTIUS II, 337-361 AD. Ae Reference: Condition:
Very Fine W :1.7 gr H :14.5 mm

1



571 Constantine I. A.D. 307/10-337. AE follis Reference:
Condition: Very Fine W :1.7 gr H :14.6 mm

1



572 CONSTANTIUS II, 337-361 AD. Ae Reference: Condition:
Very Fine W :1.8 gr H :13.6 mm

1



573 CONSTANTIUS II, 337-361 AD. Ae Reference: Condition:
Very Fine W :5 gr H :23.8 mm

1



574 CONSTANTIUS II, 337-361 AD. Ae Reference: Condition:
Very Fine W :5.3 gr H :23.7 mm

1



575 CONSTANTIUS II, 337-361 AD. Ae Reference: Condition:
Very Fine W :5.3 gr H :24.3 mm

1



576 CONSTANTIUS II, 337-361 AD. Ae Reference: Condition:
Very Fine W :5.9 gr H :23 mm

1



577 CONSTANTIUS II, 337-361 AD. Ae Reference: Condition:
Very Fine W :5.5 gr H :23.2mm

1



578 CONSTANTIUS II, 337-361 AD. Ae Reference: Condition:
Very Fine W :4 gr H :23.3mm

1



579 Constantine II. As Caesar, A.D. 317-337. AE Reference:
Condition: Very Fine W :3.5 gr H :18.3 mm

1



580 Constantine II. As Caesar, A.D. 317-337. AE Reference:
Condition: Very Fine W :3.7 gr H :19.3 mm

1



581 Constantine II. As Caesar, A.D. 317-337. AE Reference:
Condition: Very Fine W :1.7 gr H :16 mm

1



582 Constantine II. As Caesar, A.D. 317-337. AE Reference:
Condition: Very Fine W :3.7 gr H :20.1 mm

1



583 Constantine II. As Caesar, A.D. 317-337. AE Reference:
Condition: Very Fine W :3.2 gr H :17.9 mm

1



584 Constantine II. As Caesar, A.D. 317-337. AE Reference:
Condition: Very Fine W :2.8 gr H :18.5 mm

1



585 Constantine II. As Caesar, A.D. 317-337. AE Reference:
Condition: Very Fine W :2.7 gr H :17.5 mm

1



586 Constantine II. As Caesar, A.D. 317-337. AE Reference:
Condition: Very Fine W :2.7 gr H :17.9 mm

1



587 Constantine II. As Caesar, A.D. 317-337. AE Reference:
Condition: Very Fine W :3.1 gr H :18 .3 mm

1



588 Constantine II. As Caesar, A.D. 317-337. AE Reference:
Condition: Very Fine W :2.7 gr H :15 .8 mm

1



589 Constantine II. As Caesar, A.D. 317-337. AE Reference:
Condition: Very Fine W :3.6 gr H :18.3 mm

1



590 Licinius I. A.D. 308-324. AE follis Reference: Condition: Very Fine W :3.6 gr H :19.9 mm

1



591 Licinius I. A.D. 308-324. AE follis Reference: Condition: Very Fine W :3.8 gr H :19.8 mm

1



592 Licinius I. A.D. 308-324. AE follis Reference: Condition: Very Fine W :3.6 gr H :19.9 mm

1



593 Licinius I. A.D. 308-324. AE follis Reference: Condition: Very Fine W :3.7 gr H :22.6 mm

1



594 Licinius I. A.D. 308-324. AE follis Reference: Condition: Very Fine W :3.4 gr H :18.6 mm

1



595 Licinius I. A.D. 308-324. AE follis Reference: Condition: Very Fine W :3.3 gr H :20.1mm

1



596 Licinius I. A.D. 308-324. AE follis Reference: Condition: Very Fine W :2.8 gr H :20.4mm

1



597 Licinius I. A.D. 308-324. AE follis Reference: Condition: Very Fine W :3.3gr H :18.3mm

1



598 Licinius I. A.D. 308-324. AE follis Reference: Condition: Very Fine W :3.5 gr H :26.9mm

1



599 Licinius I. A.D. 308-324. AE follis Reference: Condition: Very Fine W :3.7 gr H :20mm

1



600 Licinius I. A.D. 308-324. AE follis Reference: Condition: Very Fine W :3.7 gr H :19.6 mm

1



601 Licinius I. A.D. 308-324. AE follis Reference: Condition: Very Fine W :4.1 gr H :18.9mm

1



602 Licinius I. A.D. 308-324. AE follis Reference: Condition: Very Fine W :3.6 gr H :18.5 mm

1



603 Licinius I. A.D. 308-324. AE follis Reference: Condition: Very Fine W :2.4 g4 H :21 mm

1



604 Licinius I. A.D. 308-324. AE follis Reference: Condition: Very Fine W :3 gr H :18.1mm

1



605 Licinius I. A.D. 308-324. AE follis Reference: Condition: Very Fine W :3 gr H :19.3 mm

1



606 Theodosius. A.D. 379-395. AE Reference: Condition: Very Fine W :5.4 gr H :20.7 mm

1



607 Theodosius. A.D. 379-395. AE Reference: Condition: Very Fine W :2.5 gr H :17.5 mm

1



608 Theodosius. A.D. 379-395. AE Reference: Condition: Very Fine W :2.5 gr H :17.2 gr

1



609 Theodosius. A.D. 379-395. AE Reference: Condition: Very Fine W :5.1 gr H :22 mm

1



610 Theodosius. A.D. 379-395. AE Reference: Condition: Very Fine W :2.4 gr H :18.5 mm

1



611 Theodosius. A.D. 379-395. AE Reference: Condition: Very Fine W :2.1 gr H :16.1 mm

1



612 Theodosius. A.D. 379-395. AE Reference: Condition: Very Fine W :1.8 gr Weight =12.4mm

1



613 Theodosius. A.D. 379-395. AE Reference: Condition: Very Fine W :1.3 gr H :17.4 mm

1



614 Theodosius. A.D. 379-395. AE Reference: Condition: Very Fine W :1.7 gr H :12mm

1



615 Theodosius. A.D. 379-395. AE Reference: Condition: Very Fine W :1.8 gr H :13.1 mm

1



616 Theodosius. A.D. 379-395. AE Reference: Condition: Very Fine W :3 gr H :15.7 mm

1



617 Theodosius. A.D. 379-395. AE Reference: Condition: Very Fine W :1.7 gr H :12.4 mm

1



618 Crispus. Caesar, A.D. 317-326. AE Reference: Condition: Very Fine W :4.1 gr H :18 mm

1



619 Valentinian II. A.D. 375-392. AE Reference: Condition: Very Fine W :4.9 gr H :23.6 mm

1



620 Valentinian II. A.D. 375-392. AE Reference: Condition: Very Fine W :5.1 gr H :23.2 mm

1



621 Constantine II. As Caesar, A.D. 317-337. AE Reference: Condition: Very Fine W :2.2 gr H :16.6mm

1



622 Valentinian II. A.D. 375-392. AE Reference: Condition: Very Fine W :1.5 gr H :13.2mm

1



623 Maxentius. AD 306-312. AE Follis Reference: Condition: Very Fine W :4.4 gr H :20.8 mm

1



624 Arcadius. A.D. 383-408. AE Reference: Condition: Very Fine W :5.6 gr H :23.2 mm

1



625 Arcadius. A.D. 383-408. AE Reference: Condition: Very Fine
W :4.8 gr H :20.9mm

1



626 Arcadius. A.D. 383-408. AE Reference: Condition: Very Fine
W :2.7 gr H :16.9 mm

1



627 Arcadius. A.D. 383-408. AE Reference: Condition: Very Fine
W :2.3 gr H :16.7 mm

1



628 Arcadius. A.D. 383-408. AE Reference: Condition: Very Fine
W :2.9 gr H :16 mm

1



629 Arcadius. A.D. 383-408. AE Reference: Condition: Very Fine
W :2.1 gr H :15.6 mm

1



630 Arcadius. A.D. 383-408. AE Reference: Condition: Very Fine
W :3 gr H :15.2 mm

1



631 Arcadius. A.D. 383-408. AE Reference: Condition: Very Fine
W :1.8 gr H :13.3 mm

1



632 Gratian. A.D. 367-383. AE Reference: Condition: Very Fine
W :3.1 gr H :17.2 mm

1



633 Gratian. A.D. 367-383. AE Reference: Condition: Very Fine
W :3.1 gr H :17.5mm

1



634 Honorius. A.D. 393-423. AE Reference: Condition: Very Fine
W :6.4 gr H :20.mm

1



635 Honorius. A.D. 393-423. AE Reference: Condition: Very Fine
W :3.1 gr H :15.8 mm

1



636 Honorius. A.D. 393-423. AE Reference: Condition: Very Fine
W :3gr H :15.9 mm

1



637 Honorius. A.D. 393-423. AE Reference: Condition: Very Fine
W :3.2 gr H :14.6 mm

1



638 Honorius. A.D. 393-423. AE Reference: Condition: Very Fine
W :1.9 gr H :10.7 mm

1



639 Julian II. A.D. 360-363. AE Reference: Condition: Very Fine
W :3.5 gr H :19.6 mm

1



640 Anonymous Pagan Issues. Ca. A.D. 305-313. AE Reference:
Condition: Very Fine W :2.2 gr H :16 mm

1



641 Anonymous Pagan Issues. Ca. A.D. 305-313. AE Reference:
Condition: Very Fine W :2 gr H :15,4 mm

1



642 Valentinian I. A.D. 364-375. AE Reference: Condition: Very
Fine W :2.9 gr H :16.1mm

1



643 Zeno. A.D. 476-491. AE ?? Reference: Condition: Very Fine
W :1,7 gr H :10.2 mm

1



644 Barbarous Imitation. Ca. 4th century A.D. AE Reference:
Condition: Very Fine W :1.9 gr H :12.1mm

1



645 Constantine I. A.D. 307/10-337. AE follis Reference:
Condition: Very Fine W :2.7 gr H :13.6 mm

1



646 Constantius II. A.D. 337-361. AE Reference: Condition: Very Fine W :5.2 gr H :21.2 mm

1



647 Constantius II. A.D. 337-361. AE Reference: Condition: Very Fine W :5.4 gr H :22.2 mm

1



648 Constantius II. A.D. 337-361. AE Reference: Condition: Very Fine W :5 gr H :21 mm

1



649 Constantius II. A.D. 337-361. AE Reference: Condition: Very Fine W :5.1 gr H :22.2 mm

1



650 Constantius II. A.D. 337-361. AE Reference: Condition: Very Fine W :4.8 gr H :19.9 mm

1



651 Constans. A.D. 337-350. AE Reference: Condition: Very Fine W :5 gr H :19.7 mm

1



652 Constantius II. A.D. 337-361. AE Reference: Condition: Very Fine W :5.2 gr H :20.6 mm

1



653 Constantius II. A.D. 337-361. AE Reference: Condition: Very Fine W :4.2 gr H :19.7 mm

1



654 Constantius II. A.D. 337-361. AE Reference: Condition: Very Fine W :4.1 gr H :20.5 mm

1



655 Byzantine Weight. Circa 6th - 11th Century AD. Reference: Condition: Very Fine W :2.6 gr H :11.1 mm

1



656 Byzantine Lead Seal. Circa 6th - 11th Century AD. Reference: Condition: Very Fine W :4 gr H :20.6 mm

1



657 Byzantine Lead Seal. Circa 6th - 11th Century AD. Reference: Condition: Very Fine W :4.4 gr H :20.9 mm

1



658 Byzantine Coins. Circa 6th - 11th Century AD. Reference: Condition: Very Fine W :18.3 gr H :33.7 mm

1



659 Byzantine Coins. Circa 6th - 11th Century AD. Reference: Condition: Very Fine W :21.8 gr H :42 mm

1



660 Byzantine Coins. Circa 6th - 11th Century AD. Reference:
Condition: Very Fine W :17.5 gr H :29.7 mm

1



661 Byzantine Coins. Circa 6th - 11th Century AD. Reference:
Condition: Very Fine W :17.2 gr H :33.3

1



662 Byzantine Coins. Circa 6th - 11th Century AD. Reference:
Condition: Very Fine W :15.6 gr H :32.1 mm

1



663 Byzantine Coins. Circa 6th - 11th Century AD. Reference:
Condition: Very Fine W :8.6 gr H :24.7 mm

1



664 Byzantine Coins. Circa 6th - 11th Century AD. Reference:
Condition: Very Fine W :14.6 gr H :28.1mm

1



665 Byzantine Coins. Circa 6th - 11th Century AD. Reference:
Condition: Very Fine W : 8.8gr H :26.3mm

1



666 Byzantine Coins. Circa 6th - 11th Century AD. Reference:
Condition: Very Fine W :2gr H :10.6 mm

1



667 Byzantine Coins. Circa 6th - 11th Century AD. Reference:
Condition: Very Fine W :3.3 gr H :14,7 mm

1



668 Byzantine Coins. Circa 6th - 11th Century AD. Reference:
Condition: Very Fine W :4,4 gr H :16.2 mm

1



669 Byzantine Coins. Circa 6th - 11th Century AD. Reference:
Condition: Very Fine W :3.2 gr H :12.3mm

1



670 Byzantine Coins. Circa 6th - 11th Century AD. Reference:
Condition: Very Fine W :2.3 gr H :12.1mm

1



671 Byzantine Coins. Circa 6th - 11th Century AD. Reference:
Condition: Very Fine W :2.5 gr H :11.3mm

1



672 Byzantine Coins. Circa 6th - 11th Century AD. Reference:
Condition: Very Fine W :1.7 gr H :14.2mm

1



673 Byzantine Coins. Circa 6th - 11th Century AD. Reference:
Condition: Very Fine W :2.4 gr H :14.2mm

1



674 Byzantine Coins. Circa 6th - 11th Century AD. Reference:
Condition: Very Fine W :15 gr H :28.2mm

1



675 Byzantine Coins. Circa 6th - 11th Century AD. Reference:
Condition: Very Fine W :15.3 gr H :29.5 mm

1



676 Byzantine Coins. Circa 6th - 11th Century AD. Reference:
Condition: Very Fine W :14.6 gr H :31.3 mm

1



677 Byzantine Coins. Circa 6th - 11th Century AD. Reference:
Condition: Very Fine W :13.3 gr H :29.2mm

1



678 Byzantine Coins. Circa 6th - 11th Century AD. Reference:
Condition: Very Fine W :13.1 gr H :30.1mm

1



679 Byzantine Coins. Circa 6th - 11th Century AD. Reference:
Condition: Very Fine W :13.2 gr H :27.6mm

1



680 Byzantine Coins. Circa 6th - 11th Century AD. Reference:
Condition: Very Fine W :12.1gr H :28.8 mm

1



681 Byzantine Coins. Circa 6th - 11th Century AD. Reference:
Condition: Very Fine W :13.8 gr H :26.3 mm

1



682 Byzantine Coins. Circa 6th - 11th Century AD. Reference:
Condition: Very Fine W :5.9 gr H :23.6 mm

1



683 Byzantine Coins. Circa 6th - 11th Century AD. Reference:
Condition: Very Fine W :14.7 gr H :27.4 mm

1



684 Byzantine Coins. Circa 6th - 11th Century AD. Reference:
Condition: Very Fine W :11.5 gr H :28.4 mm

1



685 Byzantine Coins. Circa 6th - 11th Century AD. Reference:
Condition: Very Fine W :11.7 gr H :32.1mm

1



686 Byzantine Coins. Circa 6th - 11th Century AD. Reference:
Condition: Very Fine W :11.1 gr H :26.6 mm

1



687 Byzantine Coins. Circa 6th - 11th Century AD. Reference:
Condition: Very Fine W :11.4 gr H :27.7 mm

1



688 Byzantine Coins. Circa 6th - 11th Century AD. Reference:
Condition: Very Fine W :11.3 gr H :26.9 mm

1



689 Byzantine Coins. Circa 6th - 11th Century AD. Reference:
Condition: Very Fine W :12.3 gr H :26.4mm

1



690 Byzantine Coins. Circa 6th - 11th Century AD. Reference:
Condition: Very Fine W :11gr H :30.5mm

1



691 Byzantine Coins. Circa 6th - 11th Century AD. Reference:
Condition: Very Fine W :7,2gr H :21.4mm

1



692 Byzantine Coins. Circa 6th - 11th Century AD. Reference:
Condition: Very Fine W :6.3 gr H :22.9 mm

1



693 Byzantine Coins. Circa 6th - 11th Century AD. Reference:
Condition: Very Fine W :6.5 gr H :23.7 mm

1



694 Byzantine Coins. Circa 6th - 11th Century AD. Reference:
Condition: Very Fine W :5.8 gr H :23.6 mm

1



695 Byzantine Coins. Circa 6th - 11th Century AD. Reference:
Condition: Very Fine W :7.3 gr H :22.4mm

1



696 Byzantine Coins. Circa 6th - 11th Century AD. Reference:
Condition: Very Fine W :6.7 gr H :20.5 mm

1



697 Byzantine Coins. Circa 6th - 11th Century AD. Reference:
Condition: Very Fine W :3.8 gr H :16.7 mm

1



698 Byzantine Coins. Circa 6th - 11th Century AD. Reference:
Condition: Very Fine W :4.9 gr H :19.4 mm

1



699 Byzantine Coins. Circa 6th - 11th Century AD. Reference:
Condition: Very Fine W :5.5 gr H :22.6 mm

1



700 Byzantine Coins. Circa 6th - 11th Century AD. Reference:
Condition: Very Fine W :6.7 gr H :23.4 mm

1



701 Byzantine Coins. Circa 6th - 11th Century AD. Reference:
Condition: Very Fine W :13.5 gr H :28.5 mm

1



702 Byzantine Coins. Circa 6th - 11th Century AD. Reference:
Condition: Very Fine W :10.5 gr H :29.5 mm

1



703 Byzantine Coins. Circa 6th - 11th Century AD. Reference:
Condition: Very Fine W :11gr H :27.8 mm

1



704 Byzantine Coins. Circa 6th - 11th Century AD. Reference:
Condition: Very Fine W :5.5 gr H :22.9 mm

1



705 Byzantine Coins. Circa 6th - 11th Century AD. Reference:
Condition: Very Fine W :10 gr H :27.8 mm

1



706 Byzantine Coins. Circa 6th - 11th Century AD. Reference:
Condition: Very Fine W :10.8 gr H :26mm

1



707 Byzantine Coins. Circa 6th - 11th Century AD. Reference:
Condition: Very Fine W :13.2 gr H :31 mm

1



708 Byzantine Coins. Circa 6th - 11th Century AD. Reference:
Condition: Very Fine W :10.6gr H :27.2 mm

1



709 Byzantine Coins. Circa 6th - 11th Century AD. Reference:
Condition: Very Fine W :6.1 gr H :25.4 mm

1



710 Byzantine Coins. Circa 6th - 11th Century AD. Reference:
Condition: Very Fine W :6.4 gr H :21.5 mm

1



711 Byzantine Coins. Circa 6th - 11th Century AD. Reference:
Condition: Very Fine W :7.2 gr H :24.6 mm

1



712 Byzantine Coins. Circa 6th - 11th Century AD. Reference:
Condition: Very Fine W :7.1 gr H :24.9 mm

1



713 Byzantine Coins. Circa 6th - 11th Century AD. Reference:
Condition: Very Fine W :9.2 gr H :25.7 mm

1



714 Byzantine Coins. Circa 6th - 11th Century AD. Reference:
Condition: Very Fine W :3.5 gr H :21.7 mm

1



715 Byzantine Coins. Circa 6th - 11th Century AD. Reference:
Condition: Very Fine W :5.8 gr H :23.4 mm

1



716 Byzantine Coins. Circa 6th - 11th Century AD. Reference:
Condition: Very Fine W :9.8 gr H :26.2mm

1



717 Byzantine Coins. Circa 6th - 11th Century AD. Reference:
Condition: Very Fine W :14.6 gr H :33.1mm

1



718 Byzantine Coins. Circa 6th - 11th Century AD. Reference:
Condition: Very Fine W :9.7 gr H :29.8 mm

1



719 Byzantine Coins. Circa 6th - 11th Century AD. Reference:
Condition: Very Fine W :6.7 gr H :26.7 mm

1



720 Byzantine Coins. Circa 6th - 11th Century AD. Reference:
Condition: Very Fine W :6 gr H :25.5 mm

1



721 Byzantine Coins. Circa 6th - 11th Century AD. Reference:
Condition: Very Fine W :10.2 gr H :30.2mm

1



722 Byzantine Coins. Circa 6th - 11th Century AD. Reference:
Condition: Very Fine W :8.9 gr H :27 mm

1



723 Byzantine Coins. Circa 6th - 11th Century AD. Reference:
Condition: Very Fine W :12.3 gr H :30.3mm

1



724 Byzantine Coins. Circa 6th - 11th Century AD. Reference:
Condition: Very Fine W :14.4 gr H :29.2mm

1



725 Byzantine Coins. Circa 6th - 11th Century AD. Reference:
Condition: Very Fine W :9.6 gr H :25.2mm

1



726 Byzantine Coins. Circa 6th - 11th Century AD. Reference:
Condition: Very Fine W :7.5 gr H :27.5mm

1



727 Byzantine Coins. Circa 6th - 11th Century AD. Reference:
Condition: Very Fine W :12.8 gr H :28.6 mm

1



728 Byzantine Coins. Circa 6th - 11th Century AD. Reference:
Condition: Very Fine W :12gr H :29,6mm

1



729 Byzantine Coins. Circa 6th - 11th Century AD. Reference:
Condition: Very Fine W :9.4gr H :28mm

1



730 Byzantine Coins. Circa 6th - 11th Century AD. Reference:
Condition: Very Fine W :10.3 gr H :29.2mm

1



731 Byzantine Coins. Circa 6th - 11th Century AD. Reference:
Condition: Very Fine W :12.4 gr H :26.9 mm

1



732 Byzantine Coins. Circa 6th - 11th Century AD. Reference:
Condition: Very Fine W :13.2 gr H :31.6 mm

1



733 Byzantine Coins. Circa 6th - 11th Century AD. Reference:
Condition: Very Fine W :10.3 gr H :27.5 mm

1



734 Byzantine Coins. Circa 6th - 11th Century AD. Reference:
Condition: Very Fine W :9.8 gr H :26.6 mm

1



735 Byzantine Coins. Circa 6th - 11th Century AD. Reference:
Condition: Very Fine W :8.6 gr H :28.8 mm

1



736 Byzantine Coins. Circa 6th - 11th Century AD. Reference:
Condition: Very Fine W :8.7 gr H :30.8 mm

1



737 Byzantine Coins. Circa 6th - 11th Century AD. Reference:
Condition: Very Fine W :8.1 gr H :29.1mm

1



738 Byzantine Coins. Circa 6th - 11th Century AD. Reference:
Condition: Very Fine W :9 gr H :32.3mm

1



739 Byzantine Coins. Circa 6th - 11th Century AD. Reference:
Condition: Very Fine W :6.4 gr H :24.9 mm

1



740 Byzantine Coins. Circa 6th - 11th Century AD. Reference:
Condition: Very Fine W :10.5 gr H :30.2mm

1



741 Byzantine Coins. Circa 6th - 11th Century AD. Reference:
Condition: Very Fine W :9.1 gr H :27.9 mm

1



742 Byzantine Coins. Circa 6th - 11th Century AD. Reference:
Condition: Very Fine W :3.1 gr H :23.3 mm

1



743 Byzantine Coins. Circa 6th - 11th Century AD. Reference:
Condition: Very Fine W :0.6 gr H :14.4 mm

1



744 Crusader States. Baldwin II AE Follis. Edessa, Reference:
Condition: Very Fine W :2.2 gr H :19.5 mm

1



745 Crusader States. Baldwin II AE Follis. Edessa, Reference:
Condition: Very Fine W :2.6 gr H :20.1mm

1



746 Crusader States. Baldwin II AE Follis. Edessa, Reference:
Condition: Very Fine W :3 gr H :20.3 mm

1



747 Crusader States. Baldwin II AE Follis. Edessa, Reference:
Condition: Very Fine W :3.7 gr H :22.5 mm

1



748 Crusader States. Baldwin II AE Follis. Edessa, Reference:
Condition: Very Fine W :3.2 gr H :19.8 mm

1



749 Crusader States. Baldwin II AE Follis. Edessa, Reference:
Condition: Very Fine W :3.1 gr H :19.3 mm

1



750 CRUSADERS, Antioch. Tancred. Regent, 1101-1112. AE Follis Reference: Condition: Very Fine W :4.3 gr H :20.5 mm

1



751 CRUSADERS, Antioch. Tancred. Regent, 1101-1112. AE
Follis Reference: Condition: Very Fine W :3.5 gr H :19.2 mm

1



752 CRUSADERS, Antioch. Tancred. Regent, 1101-1112. AE
Follis Reference: Condition: Very Fine W :3.8 gr H :19.2 mm

1



753 CRUSADERS, Antioch. Tancred. Regent, 1101-1112. AE
Follis Reference: Condition: Very Fine W :4.1 gr H :21.6 mm

1



754 CRUSADERS, Antioch. Tancred. Regent, 1101-1112. AE
Follis Reference: Condition: Very Fine W :4.2 gr H :19.3 mm

1



755 CRUSADERS, Antioch. Tancred. Regent, 1101-1112. AE
Follis Reference: Condition: Very Fine W :4.2 gr H :18.9 mm

1



756 CRUSADERS, Antioch. Tancred. Regent, 1101-1112. AE
Follis Reference: Condition: Very Fine W :2.5 gr H :11.7 mm

1



757 CRUSADERS, Antioch. Tancred. Regent, 1101-1112. AE
Follis Reference: Condition: Very Fine W :3.8 gr H :18.2 mm

1



758 CRUSADERS, Antioch. Tancred. Regent, 1101-1112. AE
Follis Reference: Condition: Very Fine W :3.6 gr H :21mm

1



759 CRUSADERS, Antioch. Tancred. Regent, 1101-1112. AE
Follis Reference: Condition: Very Fine W :5.4 gr H :23.1mm

1



760 CRUSADERS, Antioch. Tancred. Regent, 1101-1112. AE
Follis Reference: Condition: Very Fine W :3.6 gr H :22.4mm

1



761 CRUSADERS, Antioch. Tancred. Regent, 1101-1112. AE
Follis Reference: Condition: Very Fine W :3.1 gr H :21 mm

1



762 CRUSADERS, Antioch. Tancred. Regent, 1101-1112. AE
Follis Reference: Condition: Very Fine W :3.1 gr H :20.6mm

1



763 CRUSADERS, Antioch. Tancred. Regent, 1101-1112. AE
Follis Reference: Condition: Very Fine W :3.2 gr H :20.5mm

1



764 CRUSADERS, Antioch. Tancred. Regent, 1101-1112. AE
Follis Reference: Condition: Very Fine W :2.2 gr H :19.8 mm

1



765 CRUSADERS, Antioch. Tancred. Regent, 1101-1112. AE
Follis Reference: Condition: Very Fine W :4 gr H :24.5mm

1



766 CRUSADERS, Antioch. Tancred. Regent, 1101-1112. AE
Follis Reference: Condition: Very Fine W :3.3 gr H :22.3 mm

1



767 CRUSADERS, Antioch. Tancred. Regent, 1101-1112. AE
Follis Reference: Condition: Very Fine W :3.9 gr H :23.4 mm

1



768 CRUSADERS, Antioch. Tancred. Regent, 1101-1112. AE
Follis Reference: Condition: Very Fine W :2.6 gr H :21.4 mm

1



769 CRUSADERS, Antioch. Tancred. Regent, 1101-1112. AE
Follis Reference: Condition: Very Fine W :2.4 gr H :20.1 mm

1



770 Crusader States, Antioch (Principality). Bohémond III AR
Denier. Reference: Condition: Very Fine W :0.7 gr H :16.9 mm

1



771 Crusader States, Antioch (Principality). Bohémond III AR
Denier. Reference: Condition: Very Fine W :0.9 gr H :17.1mm

1



772 Crusader States, Antioch (Principality). Bohémond III AR Denier. Reference: Condition: Very Fine W :0.9 gr H :17.9 mm

1



773 Crusader States, Antioch (Principality). Bohémond III AR Denier. Reference: Condition: Very Fine W :0.9 gr H :16.5 mm

1



774 Crusader States, Antioch (Principality). Bohémond III AR Denier. Reference: Condition: Very Fine W :1gr H :17.9 mm

1



775 Crusader States, Antioch (Principality). Bohémond III AR Denier. Reference: Condition: Very Fine W :1gr H :16.9 mm

1



776 Crusader States, Antioch (Principality). Bohémond III AR Denier. Reference: Condition: Very Fine W :1 gr H :16.9 mm

1



777 Crusader States, Antioch (Principality). Bohémond III AR Denier. Reference: Condition: Very Fine W :1 gr H :17.6 mm

1



778 Crusaders. Circa 10th - 12th Century AD. Reference: Condition: Very Fine W :1 gr H :15.1mm

1



779 Crusaders. Circa 10th - 12th Century AD. Reference:
Condition: Very Fine W :1.1 gr H :16.3 mm

1



780 Crusaders. Circa 10th - 12th Century AD. Reference:
Condition: Very Fine W :0.7 gr H :14.1 mm

1



781 Crusader States, Antioch (Principality). Bohémond III AR
Denier. Reference: Condition: Very Fine W :0.9 gr H :18 .6 mm

1



782 ARMENIA, Cilician Armenia. Royal. Levon I. 1198-1219. AE
Tank Reference: Condition: Very Fine W :7.7 gr H :29.3 mm

1



783 ARMENIA, Cilician Armenia. Royal. Levon I. 1198-1219. AE
Tank Reference: Condition: Very Fine W :7.4 gr H :27.6 mm

1



784 ARMENIA, Cilician Armenia. Royal. Levon I. 1198-1219. AE
Tank Reference: Condition: Very Fine W :7.7 gr H :28.3 mmm

1



785 Armenian. Circa 10th - 12th Century AD. Reference:
Condition: Very Fine W :3.3 gr H :23.2 mm

1



786 Armenian. Circa 10th - 12th Century AD. Reference:
Condition: Very Fine W :2.9 gr H :19.7 mm

1



787 Armenian. Circa 10th - 12th Century AD. Reference:
Condition: Very Fine W :4 gr H :22.2 mm

1



788 Armenian. Circa 10th - 12th Century AD. Reference:
Condition: Very Fine W :5.9 gr H :23.7 mm

1



789 Armenian. Circa 10th - 12th Century AD. Reference:
Condition: Very Fine W :3.9 gr H :21.5 mm

1



790 Armenian. Circa 10th - 12th Century AD. Reference:
Condition: Very Fine W :1.4gr H :17.6 mm

1



791 Armenian. Circa 10th - 12th Century AD. Reference:
Condition: Very Fine W :1.1 gr H :15.2mm

1



792 Armenian. Circa 10th - 12th Century AD. Reference:
Condition: Very Fine W :2.2 gr H :20.6 mm

1



793 Armenian. Circa 10th - 12th Century AD. Reference:
Condition: Very Fine W :2.7 gr H :20.6 mm

1



794 Armenian. Circa 10th - 12th Century AD. Reference:
Condition: Very Fine W :2.3 gr H :19.4 mm

1



795 Arab-Byzantine Coins. Circa 7th - 14th Century AD.
Reference: Condition: Very Fine W :6.2 gr H :20.5 mm

1



796 Arab-Byzantine Coins. Circa 7th - 14th Century AD.
Reference: Condition: Very Fine W :6.3 gr H :24.3mm

1



797 Arab-Byzantine Coins. Circa 7th - 14th Century AD.
Reference: Condition: Very Fine W :4.8 gr H :27.4 mm

1



798 Arab-Byzantine Coins. Circa 7th - 14th Century AD.
Reference: Condition: Very Fine W :2.7 gr H :20.7 mm

1



799 Arab-Byzantine Coins. Circa 7th - 14th Century AD.
Reference: Condition: Very Fine W :6.4 gr H :24mm

1



800 Arab-Byzantine Coins. Circa 7th - 14th Century AD.
Reference: Condition: Very Fine W :6.9 gr H :30.4 mm

1



801 Arab-Byzantine Coins. Circa 7th - 14th Century AD.
Reference: Condition: Very Fine W :4.5 gr H :27.6 mm

1



802 Arab-Byzantine Coins. Circa 7th - 14th Century AD.
Reference: Condition: Very Fine W :9.9 gr H :27.8 mm

1



803 Arab-Byzantine Coins. Circa 7th - 14th Century AD.
Reference: Condition: Very Fine W :3.2 gr H :27 mm

1



804 Arab-Byzantine Coins. Circa 7th - 14th Century AD.
Reference: Condition: Very Fine W :5.7 gr H :26.4 mm

1



805 Arab-Byzantine Coins. Circa 7th - 14th Century AD.
Reference: Condition: Very Fine W :5.9 gr H :23.8 mm

1



806 Arab-Byzantine Coins. Circa 7th - 14th Century AD.
Reference: Condition: Very Fine W :6 gr H :24.5 mm

1



807 Arab-Byzantine Coins. Circa 7th - 14th Century AD.
Reference: Condition: Very Fine W :5.6 gr H :23.1mm

1



808 Arab-Byzantine Coins. Circa 7th - 14th Century AD.
Reference: Condition: Very Fine W :3.1 gr H :20.4 mm

1



809 Arab-Byzantine Coins. Circa 7th - 14th Century AD.
Reference: Condition: Very Fine W :5.3 gr H :28.5 mm

1



810 Arab-Byzantine Coins. Circa 7th - 14th Century AD.
Reference: Condition: Very Fine W :4.8 gr H :25.5mm

1



811 Arab-Byzantine Coins. Circa 7th - 14th Century AD.
Reference: Condition: Very Fine W :4.8 gr H :22.3 mm

1



812 Arab-Byzantine Coins. Circa 7th - 14th Century AD.
Reference: Condition: Very Fine W :3.4 gr H :21.2 mm

1



813 Arab-Byzantine Coins. Circa 7th - 14th Century AD.
Reference: Condition: Very Fine W :4.3 gr H :23.4 mm

1



814 Arab-Byzantine Coins. Circa 7th - 14th Century AD.
Reference: Condition: Very Fine W :2.4gr H :20.8mm

1



815 Arab-Byzantine Coins. Circa 7th - 14th Century AD.
Reference: Condition: Very Fine W :4.8 gr H :22.1mm

1



816 Arab-Byzantine Coins. Circa 7th - 14th Century AD.
Reference: Condition: Very Fine W :4.3 gr H :20.8 mm

1



817 Arab-Byzantine Coins. Circa 7th - 14th Century AD.
Reference: Condition: Very Fine W :4.4 gr H :25mm

1



818 Arab-Byzantine Coins. Circa 7th - 14th Century AD.
Reference: Condition: Very Fine W :3.8 gr H :22.7 mm

1



819 Arab-Byzantine Coins. Circa 7th - 14th Century AD.
Reference: Condition: Very Fine W :2.2 gr H :18.1 mm

1



820 Arab-Byzantine Coins. Circa 7th - 14th Century AD.
Reference: Condition: Very Fine W :4.3 gr H :19.7 mm

1



821 Arab-Byzantine Coins. Circa 7th - 14th Century AD.
Reference: Condition: Very Fine W :3.4 gr H :16.3mm

1



822 Arab-Byzantine Coins. Circa 7th - 14th Century AD.
Reference: Condition: Very Fine W :5.2 gr H :23.2 mm

1



823 Arab-Byzantine Coins. Circa 7th - 14th Century AD.
Reference: Condition: Very Fine W :5.8 gr H :24.2 mm

1



824 Arab-Byzantine Coins. Circa 7th - 14th Century AD.
Reference: Condition: Very Fine W :3.7 gr H :20.3mm

1



825 Arab-Byzantine Coins. Circa 7th - 14th Century AD.
Reference: Condition: Very Fine W :3.8 gr H :20.8 mm

1



826 Arab-Byzantine Coins. Circa 7th - 14th Century AD.
Reference: Condition: Very Fine W :3.6 gr H :19.9 mm

1



827 Arab-Byzantine Coins. Circa 7th - 14th Century AD.
Reference: Condition: Very Fine W :4.1gr H :20.8mm

1



828 Arab-Byzantine Coins. Circa 7th - 14th Century AD.
Reference: Condition: Very Fine W :3.7gr H :20.6mm

1



829 Arab-Byzantine Coins. Circa 7th - 14th Century AD.
Reference: Condition: Very Fine W :4.2 gr H :18.5mm

1



830 Arab-Byzantine Coins. Circa 7th - 14th Century AD.
Reference: Condition: Very Fine W :3.6 gr H :20.3mm

1



831 Arab-Byzantine Coins. Circa 7th - 14th Century AD.
Reference: Condition: Very Fine W :1.8 gr H :18.8mm

1



832 Arab-Byzantine Coins. Circa 7th - 14th Century AD.
Reference: Condition: Very Fine W :4gr H :20.5 mm

1



833 Arab-Byzantine Coins. Circa 7th - 14th Century AD.
Reference: Condition: Very Fine W :7.4 gr H :27.8mm

1



834 Islamic Coins. Circa 7th - 14th Century AD. Reference:
Condition: Very Fine W :4.1 gr H :22.8mm

1



835 Islamic Coins. Circa 7th - 14th Century AD. Reference:
Condition: Very Fine W :3.7 gr H :19.9 mm

1



836 Islamic Coins. Circa 7th - 14th Century AD. Reference:
Condition: Very Fine W :2.9 gr H :25.2mm

1



837 Islamic Coins. Circa 7th - 14th Century AD. Reference:
Condition: Very Fine W :3.4 gr H :24.7mm

1



838 Islamic Coins. Circa 7th - 14th Century AD. Reference:
Condition: Very Fine W :11.6 gr H :32mm

1



839 Islamic Coins. Circa 7th - 14th Century AD. Reference:
Condition: Very Fine W :9.4 gr H :29.7mm

1



840 Islamic Coins. Circa 7th - 14th Century AD. Reference:
Condition: Very Fine W :14.8 gr H :34.2mm

1



841 Islamic Coins. Circa 7th - 14th Century AD. Reference:
Condition: Very Fine W :5.9 gr H :27.7mm

1



842 Islamic Coins. Circa 7th - 14th Century AD. Reference:
Condition: Very Fine W :8.7 gr H :26.5mm

1



843 Islamic Coins. Circa 7th - 14th Century AD. Reference:
Condition: Very Fine W :3.7 gr H :27.9mm

1



844 Islamic Coins. Circa 7th - 14th Century AD. Reference:
Condition: Very Fine W :6.6 gr H :21.1mm

1



845 Islamic Coins. Circa 7th - 14th Century AD. Reference:
Condition: Very Fine W :6.1 gr H :25.9 mm

1



846 Islamic Coins. Circa 7th - 14th Century AD. Reference:
Condition: Very Fine W :2.1 gr H :19.7 mm

1



847 Islamic Coins. Circa 7th - 14th Century AD. Reference:
Condition: Very Fine W :5.1 gr H :28.7 mm

1



848 Islamic Coins. Circa 7th - 14th Century AD. Reference:
Condition: Very Fine W :3.7 gr H :22mm

1



849 Islamic Coins. Circa 7th - 14th Century AD. Reference:
Condition: Very Fine W :4.1 gr H :18.6 mm

1



850 Islamic Coins. Circa 7th - 14th Century AD. Reference:
Condition: Very Fine W :3.3 gr H :16.5mm

1



851 Islamic Coins. Circa 7th - 14th Century AD. Reference:
Condition: Very Fine W :4.5 gr H :22.2mm

1



852 Islamic Coins. Circa 7th - 14th Century AD. Reference:
Condition: Very Fine W :4.7 gr H :25.7mm

1



853 Islamic Coins. Circa 7th - 14th Century AD. Reference:
Condition: Very Fine W :5.4 gr H :23,7mm

1



854 Islamic Coins. Circa 7th - 14th Century AD. Reference:
Condition: Very Fine W :2gr H :15.4 mm

1



855 Islamic Coins. Circa 7th - 14th Century AD. Reference:
Condition: Very Fine W :2.3 gr H :16.7mm

1



856 Islamic Coins. Circa 7th - 14th Century AD. Reference:
Condition: Very Fine W :2 gr H :15.4 mm

1



857 Islamic Coins. Circa 7th - 14th Century AD. Reference:
Condition: Very Fine W :1.2 gr H :16.4 mm

1



858 Islamic Coins. Circa 7th - 14th Century AD. Reference:
Condition: Very Fine W :1.6 gr H :19.4mm

1



859 Islamic Coins. Circa 7th - 14th Century AD. Reference:
Condition: Very Fine W :4.1 gr H :20.2mm

1



860 Islamic Coins. Circa 7th - 14th Century AD. Reference:
Condition: Very Fine W :2.1 gr H :20.1mm

1



861 Islamic Coins. Circa 7th - 14th Century AD. Reference:
Condition: Very Fine W :2.5 gr H :18.4 mm

1



862 Islamic Coins. Circa 7th - 14th Century AD. Reference:
Condition: Very Fine W :3.6 gr H :15.3mm

1



863 Islamic Coins. Circa 7th - 14th Century AD. Reference:
Condition: Very Fine W :1.3 gr H :16.3mm

1



864 Islamic Coins. Circa 7th - 14th Century AD. Reference:
Condition: Very Fine W :1.9 gr H :17.7 mm

1



865 Islamic Coins. Circa 7th - 14th Century AD. Reference:
Condition: Very Fine W :2.3 gr H :18.6 mm

1



866 Islamic Coins. Circa 7th - 14th Century AD. Reference:
Condition: Very Fine W :2.6 gr H :23.3mm

1



867 Islamic Coins. Circa 7th - 14th Century AD. Reference:
Condition: Very Fine W :2.1 gr H :14.7 mm

1



868 Islamic Coins. Circa 7th - 14th Century AD. Reference:
Condition: Very Fine W :3 gr H :13.8 mm

1



869 Islamic Coins. Circa 7th - 14th Century AD. Reference:
Condition: Very Fine W :2.5 gr H :13.3mm

1



870 Islamic Coins. Circa 7th - 14th Century AD. Reference:
Condition: Very Fine

1



871 Islamic Coins. Circa 7th - 14th Century AD. Reference:
Condition: Very Fine

1



872 Islamic Coins. Circa 7th - 14th Century AD. Reference:
Condition: Very Fine

1



873 Islamic Coins. Circa 7th - 14th Century AD. Reference:
Condition: Very Fine

1



874 Islamic Coins. Circa 7th - 14th Century AD. Reference:
Condition: Very Fine

1



875 Islamic Coins. Circa 7th - 14th Century AD. Reference:
Condition: Very Fine

1



876 Islamic Coins. Circa 7th - 14th Century AD. Reference:
Condition: Very Fine

1



877 Islamic Coins. Circa 7th - 14th Century AD. Reference:
Condition: Very Fine

1



878 Islamic Coins. Circa 7th - 14th Century AD. Reference:
Condition: Very Fine

1



879 Islamic Coins. Circa 7th - 14th Century AD. Reference:
Condition: Very Fine

1



880 Islamic Coins. Circa 7th - 14th Century AD. Reference:
Condition: Very Fine

1



881 Islamic Coins. Circa 7th - 14th Century AD. Reference:
Condition: Very Fine

1



882 Islamic Coins. Circa 7th - 14th Century AD. Reference:
Condition: Very Fine

1



883 Islamic Coins. Circa 7th - 14th Century AD. Reference:
Condition: Very Fine

1



884 Islamic Coins. Circa 7th - 14th Century AD. Reference:
Condition: Very Fine

1



885 Islamic Coins. Circa 7th - 14th Century AD. Reference:
Condition: Very Fine

1



886 Islamic Coins. Circa 7th - 14th Century AD. Reference:
Condition: Very Fine

1



887 Islamic Coins. Circa 7th - 14th Century AD. Reference:
Condition: Very Fine

1



888 Islamic Coins. Circa 7th - 14th Century AD. Reference:
Condition: Very Fine

1



889 Islamic Coins. Circa 7th - 14th Century AD. Reference:
Condition: Very Fine

1



890 Islamic Coins. Circa 7th - 14th Century AD. Reference:
Condition: Very Fine

1



891 Islamic Coins. Circa 7th - 14th Century AD. Reference:
Condition: Very Fine

1



892 Islamic Coins. Circa 7th - 14th Century AD. Reference:
Condition: Very Fine

1



893 Islamic Coins. Circa 7th - 14th Century AD. Reference:
Condition: Very Fine

1



894 Islamic Coins. Circa 7th - 14th Century AD. Reference:
Condition: Very Fine

1



895 Islamic Coins. Circa 7th - 14th Century AD. Reference:
Condition: Very Fine

1



896 Islamic Coins. Circa 7th - 14th Century AD. Reference:
Condition: Very Fine

1



897 Islamic Coins. Circa 7th - 14th Century AD. Reference:
Condition: Very Fine

1



898 Islamic Coins. Circa 7th - 14th Century AD. Reference:
Condition: Very Fine

1



899 Islamic Coins. Circa 7th - 14th Century AD. Reference:
Condition: Very Fine

1



900 Islamic Coins. Circa 7th - 14th Century AD. Reference:
Condition: Very Fine

1



901 Islamic Coins. Circa 7th - 14th Century AD. Reference:
Condition: Very Fine

1



902 Islamic Coins. Circa 7th - 14th Century AD. Reference:
Condition: Very Fine

1



903 Islamic Coins. Circa 7th - 14th Century AD. Reference:
Condition: Very Fine

1



904 Islamic Coins. Circa 7th - 14th Century AD. Reference:
Condition: Very Fine

1



905 Islamic Coins. Circa 7th - 14th Century AD. Reference:
Condition: Very Fine

1



906 Islamic Coins. Circa 7th - 14th Century AD. Reference:
Condition: Very Fine

1



907 Islamic Coins. Circa 7th - 14th Century AD. Reference:
Condition: Very Fine

1



908 Islamic Coins. Circa 7th - 14th Century AD. Reference:
Condition: Very Fine

1



909 Islamic Coins. Circa 7th - 14th Century AD. Reference:
Condition: Very Fine

1



910 Islamic Coins. Circa 7th - 14th Century AD. Reference:
Condition: Very Fine

1



911 Islamic Coins. Circa 7th - 14th Century AD. Reference:
Condition: Very Fine

1



912 Islamic Coins. Circa 7th - 14th Century AD. Reference:
Condition: Very Fine

1



913 Islamic Coins. Circa 7th - 14th Century AD. Reference:
Condition: Very Fine

1



914 Collectible Items, Reference: Condition: Very Fine

1



915 Collectible Items, Reference: Condition: Very Fine

1



916 Collectible Items, Reference: Condition: Very Fine

1



917 Collectible Items, Reference: Condition: Very Fine

1



918 Collectible Items, Reference: Condition: Very Fine

1



919 Collectible Items, Reference: Condition: Very Fine

1



920 Collectible Items, Reference: Condition: Very Fine

1



921 Collectible Items, Reference: Condition: Very Fine

1



922 Collectible Items, Reference: Condition: Very Fine

1



923 Collectible Items, Reference: Condition: Very Fine

1



924 Collectible Items, Reference: Condition: Very Fine

1



925 Collectible Items, Reference: Condition: Very Fine

1



926 Collectible Items, Reference: Condition: Very Fine

1



927 Collectible Items, Reference: Condition: Very Fine

1



928 Collectible Items, Reference: Condition: Very Fine

1



929 Collectible Items, Reference: Condition: Very Fine

1



930 Collectible Items, Reference: Condition: Very Fine

1



931 Collectible Items, Reference: Condition: Very Fine

1



932 Collectible Items, Reference: Condition: Very Fine

1



933 Collectible Items, Reference: Condition: Very Fine

1



934 Collectible Items, Reference: Condition: Very Fine

1



935 Collectible Items, Reference: Condition: Very Fine

1



936 Collectible Items, Reference: Condition: Very Fine

1



937 Collectible Items, Reference: Condition: Very Fine

1



938 Collectible Items, Reference: Condition: Very Fine

1



939 Collectible Items, Reference: Condition: Very Fine

1



940 Collectible Items, Reference: Condition: Very Fine

1



941 Collectible Items, Reference: Condition: Very Fine

1



942 Collectible Items, Reference: Condition: Very Fine

1



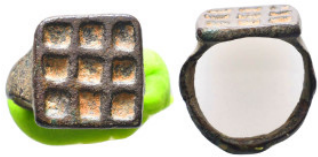
943 Collectible Items, Reference: Condition: Very Fine

1



944 Collectible Items, Reference: Condition: Very Fine

1



945 Collectible Items, Reference: Condition: Very Fine

1



946 Collectible Items, Reference: Condition: Very Fine

1



947 Collectible Items, Reference: Condition: Very Fine

1



948 Collectible Items, Reference: Condition: Very Fine

1



949 Collectible Items, Reference: Condition: Very Fine

1



950 Collectible Items, Reference: Condition: Very Fine

1



951 Collectible Items, Reference: Condition: Very Fine

1



952 Collectible Items, Reference: Condition: Very Fine

1



953 Collectible Items, Reference: Condition: Very Fine

1



954 Collectible Items, Reference: Condition: Very Fine

1



955 Collectible Items, Reference: Condition: Very Fine

1



956 Collectible Items, Reference: Condition: Very Fine

1



957 Collectible Items, Reference: Condition: Very Fine

1



958 Collectible Items, Reference: Condition: Very Fine

1



959 Collectible Items, Reference: Condition: Very Fine

1



960 Collectible Items, Reference: Condition: Very Fine

1



961 Collectible Items, Reference: Condition: Very Fine

1



962 Collectible Items, Reference: Condition: Very Fine

1



963 Collectible Items, Reference: Condition: Very Fine

1



964 Collectible Items, Reference: Condition: Very Fine

1



965 Collectible Items, Reference: Condition: Very Fine

1



966 Collectible Items, Reference: Condition: Very Fine

1



967 Collectible Items, Reference: Condition: Very Fine

1



968 Collectible Items, Reference: Condition: Very Fine

1



969 Collectible Items, Reference: Condition: Very Fine

1



970 Collectible Items, Reference: Condition: Very Fine

1



971 Collectible Items, Reference: Condition: Very Fine

1



972 Collectible Items, Reference: Condition: Very Fine

1



973 Collectible Items, Reference: Condition: Very Fine

1



974 Collectible Items, Reference: Condition: Very Fine

1



975 Collectible Items, Reference: Condition: Very Fine

1



976 Collectible Items, Reference: Condition: Very Fine

1



977 Collectible Items, Reference: Condition: Very Fine

1



978 Collectible Items, Reference: Condition: Very Fine

1



979 Collectible Items, Reference: Condition: Very Fine

1



980 Collectible Items, Reference: Condition: Very Fine

1



981 Collectible Items, Reference: Condition: Very Fine

1



982 Collectible Items, Reference: Condition: Very Fine

1



983 Collectible Items, Reference: Condition: Very Fine

1



984 Collectible Items, Reference: Condition: Very Fine

1



985 Collectible Items, Reference: Condition: Very Fine

1



986 Collectible Items, Reference: Condition: Very Fine

1



987 Collectible Items, Reference: Condition: Very Fine

1



988 Collectible Items, Reference: Condition: Very Fine

1



989 Collectible Items, Reference: Condition: Very Fine

1



990 Collectible Items, Reference: Condition: Very Fine

1



991 Collectible Items, Reference: Condition: Very Fine

1



992 Collectible Items, Reference: Condition: Very Fine

1



993 Collectible Items, Reference: Condition: Very Fine

1



994 Collectible Items, Reference: Condition: Very Fine

1



995 Collectible Items, Reference: Condition: Very Fine

1



996 Collectible Items, Reference: Condition: Very Fine

1



997 Collectible Items, Reference: Condition: Very Fine

1



998 Collectible Items, Reference: Condition: Very Fine

1



999 Collectible Items, Reference: Condition: Very Fine

1



1000 Collectible Items, Reference: Condition: Very Fine

1



1001 Collectible Items, Reference: Condition: Very Fine

1



1002 Collectible Items, Reference: Condition: Very Fine

1



1003 Collectible Items, Reference: Condition: Very Fine

1



1004 Collectible Items, Reference: Condition: Very Fine

1



1005 Collectible Items, Reference: Condition: Very Fine

1



1006 Collectible Items, Reference: Condition: Very Fine

1



1007 Collectible Items, Reference: Condition: Very Fine

1



1008 Collectible Items, Reference: Condition: Very Fine

1



1009 Collectible Items, Reference: Condition: Very Fine

1



1010 Collectible Items, Reference: Condition: Very Fine

1



1011 Collectible Items, Reference: Condition: Very Fine

1



1012 Collectible Items, Reference: Condition: Very Fine

1



1013 Collectible Items, Reference: Condition: Very Fine

1



1014 Collectible Items, Reference: Condition: Very Fine

1



1015 Collectible Items, Reference: Condition: Very Fine

1



1016 Collectible Items, Reference: Condition: Very Fine

1



1017 Collectible Items, Reference: Condition: Very Fine

1



1018 Collectible Items, Reference: Condition: Very Fine

1



1019 Collectible Items, Reference: Condition: Very Fine

1



1020 Collectible Items, Reference: Condition: Very Fine

1



1021 Collectible Items, Reference: Condition: Very Fine

1



1022 Collectible Items, Reference: Condition: Very Fine

1



1023 Collectible Items, Reference: Condition: Very Fine

1



1024 Collectible Items, Reference: Condition: Very Fine

1



1025 Collectible Items, Reference: Condition: Very Fine

1



1026 Collectible Items, Reference: Condition: Very Fine

1



1027 Collectible Items, Reference: Condition: Very Fine

1



1028 Collectible Items, Reference: Condition: Very Fine

1



1029 Collectible Items, Reference: Condition: Very Fine

1



1030 Collectible Items, Reference: Condition: Very Fine

1



1031 Collectible Items, Reference: Condition: Very Fine

1



1032 Collectible Items, Reference: Condition: Very Fine

1



1033 Collectible Items, Reference: Condition: Very Fine

1



1034 Collectible Items, Reference: Condition: Very Fine

1



1035 Collectible Items, Reference: Condition: Very Fine

1



1036 Collectible Items, Reference: Condition: Very Fine

1



1037 Collectible Items, Reference: Condition: Very Fine

1



1038 Collectible Items, Reference: Condition: Very Fine

1



1039 Collectible Items, Reference: Condition: Very Fine

1



1040 Collectible Items, Reference: Condition: Very Fine

1



1041 Collectible Items, Reference: Condition: Very Fine

1



1042 Collectible Items, Reference: Condition: Very Fine

1



1043 Collectible Items, Reference: Condition: Very Fine

1



1044 Collectible Items, Reference: Condition: Very Fine

1



1045 Collectible Items, Reference: Condition: Very Fine

1



1046 Collectible Items, Reference: Condition: Very Fine

1



1047 Collectible Items, Reference: Condition: Very Fine

1



1048 Collectible Items, Reference: Condition: Very Fine

1



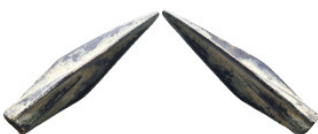
1049 Collectible Items, Reference: Condition: Very Fine

1



1050 Collectible Items, Reference: Condition: Very Fine

1



1051 Collectible Items, Reference: Condition: Very Fine

1



1052 Collectible Items, Reference: Condition: Very Fine

1



1053 Collectible Items, Reference: Condition: Very Fine

1



1054 Collectible Items, Reference: Condition: Very Fine

1