



# Savoca Coins

## **Blue | 191th Weekly Blue Auction**

20 January 2024

All prices are starting prices (EUR)  
PDF catalog created by [www.biddr.com](http://www.biddr.com)



**1** Central Gaul. Lemovices 100-50 BC. Quinarius AR 13 mm, 2,01 g Very Fine

**1**



**2** Central Gaul. Lemovices 100-50 BC. Quinarius AR 17 mm, 1,96 g Very Fine

**1**



**3** Sicily. Katane circa 150-100 BC. Bronze Æ 19 mm, 6,40 g Good Fine

**1**



**4** Sicily. Syracuse circa 478-466 BC. Litra AR 9 mm, 0,66 g Very Fine

**1**



**5** Sicily. Uncertain mint circa 300-250 BC. Bronze Æ 16 mm, 4,04 g Fine

**1**



**6** Macedon. Amphipolis circa 187-31 BC. Semis Æ 20 mm, 5,12 g Good Fine

**1**



**7** Macedon. Contemporary barbaric imitation circa 150-50 BC. Bronze Æ 22 mm, 7,73 g Fine

**1**



**8** Macedon. Macedon under Roman Rule circa 168-167 BC. Gaius Publilius, quaestor Bronze Æ 21 mm, 9,91 g Very Fine

**1**



**9** Macedon. Macedon under the Romans circa 168-167 BC. Time of Aemilius Paulius. Gaius Publilius, quaestor Bronze Æ 20 mm, 9,36 g Fine

**1**



**10** Macedon. Thessalonica circa 187-31 BC. Bronze Æ 16 mm, 5,00 g Very Fine

**1**



**11** Macedon. Thessalonica circa 187-31 BC. Bronze Æ 19 mm, 4,00 g Good Fine

**1**



**12** Kings of Macedon. Uncertain mint. Philip II of Macedon 359-336 BC. Bronze Æ 18 mm, 6,43 g Nearly Very Fine

**1**



**13** Kings of Macedon. Uncertain mint. Philip II of Macedon 359-336 BC. Bronze Æ 18 mm, 5,64 g Fine

**1**



**14** Kings of Macedon. Uncertain mint. Philip II of Macedon 359-336 BC. Bronze Æ 16 mm, 6,88 g Nearly Very Fine

**1**



**15** Kings of Macedon. Uncertain mint. Philip II of Macedon 359-336 BC. Bronze Æ 18 mm, 5,39 g Fine

**1**



**16** Kings of Macedon. Uncertain mint. Philip II of Macedon 359-336 BC. Bronze Æ 17 mm, 6,32 g Very Fine

**1**



**17** Kings of Macedon. Uncertain mint. Philip II of Macedon 359-336 BC. Bronze Æ 18 mm, 6,68 g Very Fine

**1**



**18** Kings of Macedon. Uncertain mint. Philip II of Macedon 359-336 BC. Bronze Æ 11 mm, 1,01 g Very Fine

**1**



**19** Kings of Macedon. Uncertain mint. Philip II of Macedon 359-336 BC. Bronze Æ 17 mm, 5,97 g Very Fine

**1**



**20** Kings of Macedon. Uncertain mint. Philip II of Macedon 359-336 BC. Bronze Æ 18 mm, 5,89 g Fine

**1**



**21** Kings of Macedon. Kolophon. Alexander III "the Great" 336-323 BC. Drachm AR 16 mm, 4,16 g Very Fine

**1**



**22** Kings of Macedon. Kolophon. Alexander III "the Great" 336-323 BC. Drachm AR 17 mm, 4,14 g Very Fine

**1**



**23** Kings of Macedon. Miletos. Alexander III "the Great" 336-323 BC. Drachm AR 17 mm, 4,01 g Very Fine

**1**



**24** Kings of Macedon. Salamis. Alexander III "the Great" 336-323 BC. Bronze Æ 16 mm, 3,78 g Very Fine

**1**



**25** Kings of Macedon. Uncertain mint. Alexander III "the Great" 336-323 BC. Bronze Æ 14 mm, 14 g Fine

**1**



**26** Kings of Macedon. Uncertain mint. Alexander III "the Great" 336-323 BC. Bronze Æ 17 mm, 5,91 g Nearly Very Fine

**1**



**27** Kings of Macedon. Uncertain mint. Alexander III "the Great" 336-323 BC. Bronze Æ 19 mm, 5,74 g Nearly Very Fine

**1**



**28** Kings of Macedon. Uncertain mint. Alexander III "the Great" 336-323 BC. Bronze Æ 15 mm, 3,85 g Fine

**1**



**29** Kings of Macedon. Uncertain mint. Alexander III "the Great"  
336-323 BC. Bronze Æ 18 mm, 4,82 g Nearly Very Fine

**1**



**30** Kings of Macedon. Uncertain mint. Alexander III "the Great"  
336-323 BC. Bronze Æ 10 mm, 1,45 g Very Fine

**1**



**31** Kings of Macedon. Uncertain mint. Alexander III "the Great"  
336-323 BC. Bronze Æ 18 mm, 5,65 g Very Fine

**1**



**32** Kings of Macedon. Uncertain mint. Alexander III "the Great"  
336-323 BC. Bronze Æ 18 mm, 4,47 g Very Fine

**1**



**33** Kings of Macedon. Uncertain mint. Alexander III "the Great"  
336-323 BC. Bronze Æ 18 mm, 6,85 g Nearly Very Fine

**1**



**34** Kings of Macedon. Uncertain mint. Alexander III "the Great"  
336-323 BC. Bronze Æ 19 mm, 5,96 g Very Fine

**1**



**35** Kings of Macedon. Uncertain mint. Alexander III "the Great"  
336-323 BC. Bronze Æ 17 mm, 5,85 g Very Fine

**1**



**36** Kings of Macedon. Uncertain mint. Alexander III "the Great" 336-323 BC. Bronze Æ 16 mm, 4,04 g Nearly Very Fine

**1**



**37** Kings of Macedon. Uncertain mint in Western Asia Minor. Alexander III "the Great" 336-323 BC. Bronze Æ 19 mm, 5,22 g Fine

**1**



**38** Kings of Macedon. Magnesia ad Maeandrum. Philip III Arrhidaeus 323-317 BC. In the name and types of Alexander III Drachm AR 15 mm, 3,94 g Very Fine

**1**



**39** Kings of Macedon. Salamis. Antigonos I Monophthalmos 320-301 BC. Struck under Demetrios I Poliorketes, 306/5-301 BC Bronze Æ 17 mm, 4,30 g Nearly Very Fine

**1**



**40** Kings of Macedon. Salamis on Cyprus. Demetrios I Poliorketes 306-283 BC. Bronze Æ 15 mm, 4,12 g Nearly Very Fine

**1**



**41** Kings of Macedon. Uncertain mint. Demetrios I Poliorketes 306-283 BC. Bronze Æ 15 mm, 2,08 g Good Fine

**1**



**42** Kings of Macedon. Uncertain mint. Kassander 306-297 BC. Bronze Æ 19 mm, 6,27 g Good Fine

**1**



**43** Kings of Macedon. Uncertain mint. Kassander 306-297 BC.  
Bronze Æ 16 mm, 2,96 g Nearly Very Fine

**1**



**44** Kings of Macedon. Uncertain mint. Antigonos II Gonatas 277-239 BC. Bronze Æ 20 mm, 5,27 g Fine

**1**



**45** Kings of Macedon. Uncertain mint. Time of Philip V - Perseus 187-168 BC. Bronze Æ 20 mm, 6,32 g Nearly Very Fine

**1**



**46** Thrace. Abdera circa 336-311 BC. Bronze Æ 11 mm, 1,43 g  
Very Fine

**1**



**47** Thrace. Abdera circa 250-150 BC. Bronze Æ 15 mm, 2,07 g  
Very Fine

**1**



**48** Thrace. Aigospotamoi circa 300 BC. Bronze Æ 20 mm, 7,52 g  
Nearly Very Fine

**1**



**49** Thrace. Byzantion circa 387-340 BC. Tetradrachm AR 22 mm,  
14,70 g Very Fine

**1**





**50** Thrace. Maroneia circa 398-347 BC. Bronze Æ 13 mm, 1,97 g  
Nearly Very Fine

**1**



**51** Thrace. Maroneia circa 189-45 BC. Bronze Æ 24 mm, 16,42 g  
Nearly Very Fine

**1**



**52** Thrace. Maroneia(?) circa 500-400 BC. Hemiobol AR 6 mm,  
0,27 g Very Fine

**1**



**53** Thrace. Mesembria circa 300-250 BC. Bronze Æ 20 mm, 6,70  
g Fine

**1**



**54** The Thracian Chersonese. Cardia circa 357-309 BC. Bronze Æ  
14 mm, 2,61 g Good Fine

**1**



**55** The Thracian Chersonese. Cardia circa 309-220 BC. Bronze Æ  
11 mm, 1,69 g Very Fine

**1**



**56** The Thracian Chersonese. Chersonesos circa 309-220 BC.  
Bronze Æ 12 mm, 2,04 g Good Fine

**1**



**57** The Thracian Chersonese. Chersonesos circa 309-220 BC.  
Bronze Æ 10 mm, 1,20 g Very Fine

**1**



**58** The Thracian Chersonese. Lysimacheia circa 309-220 BC.  
Bronze Æ 11 mm, 0,90 g Fine

**1**



**59** The Thracian Chersonese. Lysimacheia circa 309-220 BC.  
Bronze Æ 18 mm, 7,12 g Fine

**1**



**60** The Thracian Chersonese. Lysimacheia circa 309-220 BC.  
Bronze Æ 15 mm, 3,22 g Good Fine

**1**



**61** The Thracian Chersonese. Lysimacheia circa 309-220 BC.  
Bronze Æ 17 mm, 3,40 g Fine

**1**



**62** The Thracian Chersonese. Sestos circa 300 BC. Bronze Æ 11  
mm, 1,93 g Fine

**1**



**63** The Thracian Chersonese. Sestos circa 300 BC. Bronze Æ 11  
mm, 1,60 g Fine

**1**



**64** The Thracian Chersonese. Sestos circa 300 BC. Bronze Æ 9 mm, 0,98 g Very Fine

**1**



**65** The Thracian Chersonese. Sestos circa 300 BC. Bronze Æ 16 mm, 3,76 g Nearly Very Fine

**1**



**66** The Thracian Chersonese. Sestos circa 300 BC. Bronze Æ 16 mm, 3,76 g Fine

**1**



**67** The Thracian Chersonese. Sestos circa 300 BC. Bronze Æ 16 mm, 4,90 g Nearly Very Fine

**1**



**68** The Thracian Chersonese. Sestos circa 300 BC. Bronze Æ 17 mm, 3,18 g Good Fine

**1**



**69** The Thracian Chersonese. Sestos circa 300 BC. Bronze Æ 19 mm, 6,26 g Good Fine

**1**



**70** Islands off Thrace. Thasos circa 200-100 BC. Bronze Æ 14 mm, 1,68 g Nearly Very Fine

**1**



**71** Islands off Thrace. Thasos circa 100-0 BC. Bronze Æ 18 mm, 6,17 g Nearly Very Fine

**1**



**72** Kings of Thrace. Odrysian. Kersebleptes 359-340 BC. Bronze Æ 11 mm, 1,61 g Fine

**1**



**73** Kings of Thrace. Odrysian. Kersebleptes 359-340 BC. Bronze Æ 11 mm, 1,00 g Fine

**1**



**74** Kings of Thrace. Macedonian. Lysimachos 305-281 BC. Bronze Æ 17 mm, 3,02 g Good Fine

**1**



**75** Kings of Thrace. Ainos. Macedonian. Lysimachos 305-281 BC. Tetradrachm AR 26 mm, 16,58 g Very Fine

**1**



**76** Kings of Thrace. Uncertain mint. Macedonian. Lysimachos 305-281 BC. Bronze Æ 14 mm, 1,55 g Good Fine

**1**



**77** Kings of Thrace. Uncertain mint. Macedonian. Lysimachos 305-281 BC. Bronze Æ 16 mm, 4,87 g Good Fine

**1**



**78** Kings of Thrace. Uncertain mint. Macedonian. Lysimachos 305-281 BC. Bronze Æ 21 mm, 5,37 g Fine

**1**



**79** Kings of Thrace. Uncertain mint. Macedonian. Lysimachos 305-281 BC. Bronze Æ 19 mm, 6,18 g Nearly Very Fine

**1**



**80** Kings of Thrace. Seleukid. Adaios 253-243 BC. Bronze Æ 14 mm, 2,54 g Good Fine

**1**



**81** Kings of Thrace. Seleukid. Adaios 253-243 BC. Bronze Æ 13 mm, 2,85 g Nearly Very Fine

**1**



**82** Kings of Thrace. Uncertain mint. Seleukid. Adaios 253-243 BC. Bronze Æ 15 mm, 2,09 g Nearly Very Fine

**1**



**83** Kings of Thrace. Kainian. Mostis 139-101 BC. Bronze Æ 18 mm, 4,28 g Very Fine

**1**



**84** Thessaly. Larissa circa 200-100 BC. Bronze Æ 15 mm, 4,07 g Very Fine

**1**



**85** Thessaly. Magnetes circa 197-146 BC. Bronze Æ 20 mm, 8,40 g Fine

**1**



**86** Thessaly. Thessalian League circa 150-50 BC. Bronze Æ 20 mm, 8,98 g Good Fine

**1**



**87** Thessaly. Thessalian League circa 150-50 BC. Stater AR 20 mm, 5,97 g Very Fine

**1**



**88** Phokis. Federal Coinage circa 351-346 BC. Bronze Æ 15 mm, 2,14 g Nearly Very Fine

**1**



**89** Euboea. Histiaia circa 300-100 BC. Tetrobol AR 15 mm, 2,23 g Very Fine

**1**



**90** Euboea. Histiaia circa 300-100 BC. Tetrobol AR 15 mm, 2,39 g Very Fine

**1**



**91** Attica. Athens circa 454-404 BC. Tetradrachm AR 26 mm, 16,71 g Fine, test cuts

**1**



**92** Attica. Athens circa 454-404 BC. Tetradrachm AR 25 mm, 16,61 g Fine, test cut

**1**



**93** Attica. Athens circa 454-404 BC. Tetradrachm AR 27 mm, 16,72 g Fine, test cuts

**1**



**94** Islands off Elis. Uncertain (Zakynthos?) circa 400-350 BC. Hemiobol AR 7 mm, 0,24 g Very Fine

**1**



**95** Asia Minor. Uncertain mint circa 450-400 BC. Hemiobol AR 6 mm, 0,34 g Fine

**1**



**96** Asia Minor. Uncertain mint circa 450-400 BC. Tetartemorion AR 6 mm, 0,26 g Good Fine

**1**



**97** Asia Minor. Uncertain mint circa 300-100 BC. Bronze Æ 20 mm, 5,88 g Fine

**1**



**98** Asia Minor. Uncertain mint circa 300-100 BC. Bronze Æ 19 mm, 4,42 g Fine

**1**



**99** Asia Minor. Uncertain mint circa 300-100 BC. Bronze Æ 17 mm, 3,15 g Fine

**1**



**100** Asia Minor. Uncertain mint circa 300-100 BC. Bronze Æ 15 mm, 1,55 g Fine

**1**



**101** Cimmerian Bosphoros. Pantikapaion circa 480-470 BC. Obol AR 8 mm, 0,51 g Fine

**1**



**102** Pontos. Amisos. Time of Mithradates VI Eupator circa 120-63 BC. Bronze Æ 22 mm, 7,22 g Nearly Very Fine

**1**



**103** Pontos. Amisos. Time of Mithradates VI Eupator 120-63 BC. Bronze Æ 20 mm, 7,77 g Very Fine

**1**



**104** Pontos. Amisos. Time of Mithradates VI Eupator circa 120-63 BC. Bronze Æ 2 mm, 7,94 g Nearly Very Fine

**1**



**105** Pontos. Amisos. Time of Mithradates VI Eupator circa 120-63 BC. Bronze Æ 29 mm, 19,22 g Nearly Very Fine

**1**





**106** Pontos. Amisos. Time of Mithradates VI Eupator circa 120-63 BC. Bronze Æ 24 mm, 12,65 g Very Fine

**1**



**107** Pontos. Amisos. Time of Mithradates VI Eupator circa 120-63 BC. Bronze Æ 21 mm, 7,62 g Nearly Very Fine

**1**



**108** Pontos. Amisos. Time of Mithradates VI Eupator circa 120-63 BC. Bronze Æ 20 mm, 8,61 g Very Fine

**1**



**109** Pontos. Amisos. Time of Mithradates VI Eupator circa 120-63 BC. Bronze Æ 29 mm, 17,56 g Very Fine

**1**



**110** Paphlagonia. Amastris. Time of Mithradates VI Eupator circa 120-63 BC. Bronze Æ 30 mm, 19,00 g Good Fine

**1**



**111** Paphlagonia. Sinope circa 330-250 BC. Hemidrachm AR 14 mm, 2,89 g Very Fine

**1**



**112** Bithynia. Kalchedon circa 367-340 BC. Fourrée Siglos 16 mm, 4,25 g Nearly Very Fine

**1**



**113** Bithynia. Kios circa 350-300 BC. Diobol AR 10 mm, 0,92 g  
Fine

**1**



**114** Kings of Bithynia. Nikomedeia. Nikomedes II Epiphanes 149-127 BC. Tetradrachm AR 35 mm, 16,20 g Very Fine, scratch on obverse

**1**



**115** Mysia. Gambrion circa 400-300 BC. Bronze Æ 10 mm, 0,73 g Very Fine

**1**



**116** Mysia. Kyzikos circa 525-475 BC. Diobol AR 11 mm, 1,13 g  
Very Fine

**1**



**117** Mysia. Kyzikos circa 525-475 BC. Hemiobol AR 10 mm, 0,33 g Very Fine

**1**



**118** Mysia. Kyzikos circa 525-475 BC. Hemiobol AR 6 mm, 0,23 g Nearly Very Fine

**1**



**119** Mysia. Kyzikos circa 525-475 BC. Hemiobol AR 8 mm, 0,35 g Very Fine

**1**



**120** Mysia. Kyzikos circa 500 BC. Hemiobol AR 7 mm, 0,28 g  
Very Fine

**1**



**121** Mysia. Kyzikos circa 450-400 BC. Hemiobol AR 8 mm, 0,33 g  
Very Fine

**1**



**122** Mysia. Kyzikos circa 300-200 BC. Bronze Æ 14 mm, 3,43 g  
Very Fine

**1**



**123** Mysia. Kyzikos circa 300-200 BC. Overstruck on an earlier issue from Kyzikos (SNG Paris 436) Bronze Æ 28 mm, 14,21 g  
Very Fine

**1**



**124** Mysia. Kyzikos circa 300-200 BC. Bronze Æ 27 mm, 16,38 g  
Nearly Very Fine

**1**



**125** Mysia. Kyzikos circa 300-200 BC. Bronze Æ 17 mm, 5,66 g  
Nearly Very Fine

**1**



**126** Mysia. Lampsakos circa 500-450 BC. Diobol AR 10 mm, 1,02 g  
Fine

**1**



**127** Mysia. Lampsakos circa 500-450 BC. Obol AR 10 mm, 0,66 g Very Fine

**1**



**128** Mysia. Lampsakos circa 500-450 BC. Obol AR 9 mm, 0,54 g Fine

**1**



**129** Mysia. Lampsakos circa 400-200 BC. Bronze Æ 14 mm, 2,98 g Very Fine

**1**



**130** Mysia. Lampsakos circa 190-85 BC. Bronze Æ 12 mm, 2,29 g Very Fine

**1**



**131** Mysia. Parion circa 500 BC. Drachm AR 13 mm, 3,27 g Very Fine

**1**



**132** Mysia. Parion circa 400-300 BC. Hemidrachm AR 12 mm, 1,75 g Nearly Very Fine

**1**



**133** Mysia. Parion circa 400-350 BC. Hemidrachm AR 13 mm, 2,36 g Very Fine

**1**



**134** Mysia. Pergamon circa 133-27 BC. Bronze Æ 16 mm, 5,79 g  
Very Fine

**1**



**135** Troas. Abydos circa 480-450 BC. Obol AR 11 mm, 0,74 g  
Good Fine

**1**



**136** Troas. Alexandria circa 300-200 BC. Bronze Æ 16 mm,  
4,35 g Good Fine

**1**



**137** Troas. Biryti circa 400-200 BC. Bronze Æ 16 mm, 4,38 g  
Fine

**1**



**138** Troas. Gergis circa 400-241 BC. Bronze Æ 10 mm, 0,91 g  
Very Fine

**1**



**139** Troas. Ilion circa 29-19 BC. Bronze Æ 13 mm, 2,19 g  
Very Fine

**1**



**140** Troas. Kebren circa 500-400 BC. Diobol AR 10 mm, 1,00 g  
Good Fine

**1**



**141** Troas. Kebren circa 500-400 BC. Obol AR 7 mm, 0,52 g Fine **1**



**142** Troas. Kebren circa 500-400 BC. Hemiobol AR 6 mm, 0,33 g Fine **1**



**143** Troas. Kebren circa 480-440 BC. Hemiobol AR 7 mm, 0,35 g Very Fine **1**



**144** Troas. Kebren circa 420-412 BC. Bronze Æ 8 mm, 0,73 g Very Fine **1**



**145** Troas. Kebren circa 400-310 BC. Bronze Æ 9 mm, 0,94 g Good Fine **1**



**146** Aiolis. Autokane circa 400-300 BC. Bronze Æ 9 mm, 0,79 g Very Fine **1**



**147** Aiolis. Kyme circa 250-190 BC. Bronze Æ 19 mm, 6,49 g Fine **1**



**148** Aiolis. Myrina circa 400-200 BC. Bronze Æ 17 mm, 3,58 g  
Fine

**1**



**149** Lesbos. Unattributed Koinon mint circa 550-480 BC. BI 1/12  
Stater 7 mm, 0,51 g Very Fine

**1**



**150** Lesbos. Unattributed Koinon mint circa 550-480 BC. BI 1/12  
Stater 9 mm, 1,14 g Nearly Very Fine

**1**



**151** Lesbos. Unattributed Koinon mint circa 550-480 BC. BI 1/12  
Stater 10 mm, 1,16 g Very Fine

**1**



**152** Lesbos. Unattributed Koinon mint circa 550-480 BC. BI 1/12  
Stater 10 mm, 1,12 g Good Fine

**1**



**153** Lesbos. Unattributed Koinon mint circa 550-480 BC. BI Obol  
6 mm, 0,50 g Nearly Very Fine

**1**



**154** Ionia. Erythrai circa 530-480 BC. Tetartemorion AR 3 mm,  
0,12 g Very Fine

**1**



**155** Ionia. Klazomenai circa 350-300 BC. Bronze Æ 18 mm, 3,48 g Fine

**1**



**156** Ionia. Kolophon circa 530-500 BC. Hemiobol AR 8 mm, 0,38 g Fine

**1**



**157** Ionia. Leukai circa 350-300 BC. Bronze Æ 10 mm, 0,91 g Very Fine

**1**



**158** Ionia. Magnesia ad Maeander circa 350-200 BC. Bronze Æ 15 mm, 3,94 g Very Fine

**1**



**159** Ionia. Magnesia ad Maeander circa 200 BC. Bronze Æ 11 mm, 1,87 g Good Fine

**1**



**160** Ionia. Phokaia circa 625-522 BC. 1/96 Stater EL 5 mm, 0,13 g Very Fine

**1**



**161** Ionia. Phygela circa 350-300 BC. Bronze Æ 11 mm, 1,60 g Fine

**1**





**162** Ionia. Uncertain mint circa 625-600 BC. Sixth Stater or Hekte EL 10 mm, 2,47 g Very Fine

**1**



**163** Ionia. Uncertain mint circa 500-400 BC. Obol AR 8 mm, 0,60 g Very Fine

**1**



**164** Islands off Ionia. Chios circa 400-375 BC. Bronze Æ 12 mm, 1,91 g Very Fine

**1**



**165** Islands off Ionia. Samos circa 200-100 BC. Bronze Æ 12 mm, 1,54 g Very Fine

**1**



**166** Caria. Kasolaba circa 450-390 BC. Hemiobol AR 6 mm, 0,38 g Very Fine

**1**



**167** Caria. Kindya circa 510-480 BC. Tetrobol AR 11 mm, 1,48 g Very Fine

**1**



**168** Caria. Mylasa. Eupolemos 295-280 BC. Bronze Æ 16 mm, 4,76 g Very Fine

**1**



**169** Caria. Mylasa circa 210-30 BC. Bronze Æ 13 mm, 1,51 g  
Good Fine

**1**



**170** Caria. Mylasa circa 210-30 BC. Bronze Æ 13 mm, 1,60 g  
Nearly Very Fine

**1**



**171** Caria. Mylasa circa 210-30 BC. Bronze Æ 12 mm, 1,36 g  
Nearly Very Fine

**1**



**172** Caria. Mylasa circa 210-30 BC. Bronze Æ 12 mm, 1,58 g  
Nearly Very Fine

**1**



**173** Caria. Myous circa 400-380 BC. Bronze Æ 9 mm, 0,95 g  
Very Fine

**1**



**174** Islands off Caria. Rhodos circa 350-300 BC. Bronze Æ 10 mm, 0,98 g  
Good Fine

**1**



**175** Islands off Caria. Rhodos circa 340-316 BC. Didrachm AR 20 mm, 4,93 g  
Fine

**1**



**176** Lydia. Apollonis circa 200-100 BC. Bronze Æ 16 mm, 4,86 g  
Very Fine

**1**



**177** Lydia. Sardeis circa 133 BC-AD 14. Bronze Æ 15 mm, 3,56 g  
Fine

**1**



**178** Lydia. Thyateira circa 200-100 BC. Bronze Æ 16 mm, 4,31 g  
Very Fine

**1**



**179** Pisidia. Selge circa 200-0 BC. Bronze Æ 13 mm, 2,93 g  
Nearly Very Fine

**1**



**180** Cilicia. Aigeai circa 164-27 BC. Bronze Æ 22 mm, 5,02 g  
Nearly Very Fine

**1**



**181** Cyprus. Salamis. Nikokreon 331-310 BC. In the name and  
types of Philip III of Macedon Quarter Unit Æ 10 mm, 1,00 g Very  
Fine

**1**



**182** Cyprus. Salamis. Nikokreon 331-310 BC. In the name and  
types of Philip III of Macedon Quarter Unit Æ 10 mm, 1,45 g Very  
Fine

**1**



**183** Cyprus. Salamis. Nikokreon 331-310 BC. In the name and types of Philip III of Macedon Quarter Unit Æ 11 mm, 1,34 g Very Fine

**1**



**184** Cyprus. Salamis. Nikokreon 331-310 BC. In the name and types of Philip III of Macedon Quarter Unit Æ 10 mm, 1,30 g Very Fine

**1**



**185** Kings of Cappadocia. Mint A (Eusebeia under Mt.Argaios). Ariarathes VI Epiphanes Philopator 130-116 BC. Drachm AR 17 mm, 4,02 g Very Fine

**1**



**186** Kings of Cappadocia. Mint A (Eusebeia under Mt.Argaios). Ariarathes VI Epiphanes Philopator 130-116 BC. Drachm AR 19 mm, 3,73 g Very Fine

**1**



**187** Seleukid Kingdom. Antioch on the Orontes. Seleukos I Nikator 312-281 BC. Bronze Æ 21 mm, 8,65 g Fine

**1**



**188** Seleukid Kingdom. Antioch on the Orontes. Antiochos II Theos 261-246 BC. Bronze Æ 17 mm, 4,13 g Very Fine

**1**



**189** Seleukid Kingdom. Sardeis. Antiochos II Theos 261-246 BC. Bronze Æ 17 mm, 3,26 g Nearly Very Fine

**1**



**190** Seleukid Kingdom. Antioch or Sardeis. Antiochos III Megas 223-187 BC. Bronze Æ 13 mm, 3,73 g Very Fine

**1**



**191** Seleukid Kingdom. Uncertain military mint. Antiochos III Megas 223-187 BC. Bronze Æ 17 mm, 4,66 g Nearly Very Fine

**1**



**192** Seleukid Kingdom. Ake-Ptolemaïs mint. Antiochos IV Epiphanes 175-164 BC. Bronze Æ 19 mm, 5,26 g Very Fine

**1**



**193** Seleukid Kingdom. Ake-Ptolemaïs mint. Antiochos IV Epiphanes 175-164 BC. Bronze Æ 20 mm, 4,81 g Nearly Very Fine

**1**



**194** Seleukid Kingdom. Antioch on the Orontes. Antiochos IV Epiphanes 175-164 BC. 'Egyptianizing' series Bronze Æ 23 mm, 6,92 g Nearly Very Fine

**1**



**195** Seleukid Kingdom. Antioch on the Orontes. Antiochos IV Epiphanes 175-164 BC. 'Egyptianizing' series Bronze Æ 25 mm, 16,90 g Fine

**1**



**196** Seleukid Kingdom. Antioch on the Orontes. Antiochos IV Epiphanes 175-164 BC. Serrate Æ 16 mm, 3,37 g Very Fine

**1**



**197** Seleukid Kingdom. Antioch on the Orontes. Demetrios I Soter 162-150 BC. Drachm AR 18 mm, 3,69 g Nearly Very Fine

**1**



**198** Seleukid Kingdom. 'Pentalpha' mint in Syria or Phoenicia. Demetrios II Nikator, 1st reign 146-138 BC. Bronze Æ 19 mm, 8,51 g Nearly Very Fine

**1**



**199** Seleukid Kingdom. Antioch on the Orontes. Antiochos VII Euergetes 138-129 BC. Bronze Æ 18 mm, 5,15 g Very Fine

**1**



**200** Seleukid Kingdom. Antioch on the Orontes. Demetrios II Nikator, 2nd reign 129-125 BC. Bronze Æ 14 mm, 2,78 g Good Fine

**1**



**201** Seleukid Kingdom. Antioch on the Orontes. Alexander II Zabinas 128-122 BC. Bronze Æ 22 mm, 9,41 g Nearly Very Fine

**1**



**202** Seleukid Kingdom. Antioch on the Orontes. Alexander II Zabinas 128-122 BC. Hemidrachm AR 13 mm, 1,60 g Fine

**1**



**203** Seleukid Kingdom. Antioch on the Orontes. Antiochos IX Philopator (Kyzikenos) 114-95 BC. Bronze Æ 18 mm, 5,99 g Very Fine

**1**



**204** Seleukid Kingdom. Antioch on the Orontes. Antiochos IX Philopator (Kyzikenos) 114-95 BC. Bronze Æ 18 mm, 6,11 g Very Fine

**1**



**205** Seleukid Kingdom. Antioch on the Orontes. Antiochos IX Philopator (Kyzikenos) 114-95 BC. Bronze Æ 20 mm, 6,08 g Very Fine

**1**



**206** Seleukid Kingdom. Uncertain mint, probably in Phoenicia. Antiochos IX Philopator (Kyzikenos) 114-95 BC. Bronze Æ 18 mm, 4,33 g Nearly Very Fine

**1**



**207** Seleukid Kingdom. Uncertain mint, probably in Phoenicia. Antiochos IX Philopator (Kyzikenos) 114-95 BC. Bronze Æ 18 mm, 4,51 g Good Fine

**1**



**208** Seleukid Kingdom. Uncertain mint, probably in Phoenicia. Antiochos IX Philopator (Kyzikenos) 114-95 BC. Bronze Æ 19 mm, 5,94 g Very Fine

**1**



**209** Seleukid Kingdom. Uncertain mint, probably in Phoenicia. Antiochos IX Philopator (Kyzikenos) 114-95 BC. Bronze Æ 20 mm, 5,53 g Very Fine

**1**



**210** Seleukid Kingdom. Antioch on the Orontes. Philip I Philadelphos 95-75 BC. Tetradrachm AR 27 mm, 16,05 g Good Very Fine

**1**



**211** Seleukid Kingdom. Antioch on the Orontes. Philip I Philadelphos 95-75 BC. Tetradrachm AR 25 mm, 14,06 g Fine

**1**



**212** Seleukid Kingdom. Antioch on the Orontes. Philip I Philadelphos 95-75 BC. Tetradrachm AR 25 mm, 14,16 g Fine

**1**



**213** Seleukid Kingdom. Antioch on the Orontes. Philip I Philadelphos 95-75 BC. Tetradrachm AR 26 mm, 15,70 g Good Very Fine

**1**



**214** Seleukid Kingdom. Damascus. Antiochos XII Dionysos 87-83 BC. Bronze Æ mm, 8,46 g Nearly Very Fine

**1**



**215** Kings of Commagene. Samosata. Antiochos IV Epiphanes of Commagene AD 38-72. Bronze Æ 15 mm, 2,96 g Fine

**1**



**216** Kings of Commagene. Samosata. Epiphanes & Kallinikos AD 72. Bronze Æ 20 mm, 6,00 g Nearly Very Fine

**1**



**217** Kings of Commagene. Mithradates II 123-88 BC. Bronze Æ 15 mm, 3,13 g Very Fine

**1**





**218** Seleucis and Pieria. Antioch circa 100-0 BC. Bronze Æ 21 mm, 8,11 g Very Fine

**1**



**219** Seleucis and Pieria. Antioch circa 100-0 BC. Bronze Æ 24 mm, 10,29 g Nearly Very Fine

**1**



**220** Seleucis and Pieria. Antioch circa 100-0 BC. Bronze Æ 25 mm, 12,38 g Good Fine

**1**



**221** Seleucis and Pieria. Apameia circa 100-0 BC. Bronze Æ 20 mm, 7,72 g Very Fine

**1**



**222** Seleucis and Pieria. Laodikeia circa 100-0 BC. Bronze Æ 21 mm, 8,24 g Good Fine

**1**



**223** Phoenicia. Arados circa 137-51 BC. Bronze Æ 16 mm, 3,65 g Nearly Very Fine

**1**



**224** Phoenicia. Sidon. Time of Baalshallim II 401-366 BC. 1/16 Shekel AR 10 mm, 0,81 g Very Fine

**1**



**225** Phoenicia. Sidon. Time of Baalshallim II 401-366 BC. 1/16 Shekel AR 9 mm, 0,59 g Good Fine

**1**



**226** Phoenicia. Sidon. Time of Baalshallim II 401-366 BC. 1/16 Shekel AR 10 mm, 0,73 g Very Fine

**1**



**227** Phoenicia. Sidon. Time of Baalshallim II 401-366 BC. 1/16 Shekel AR 10 mm, 0,62 g Very Fine

**1**



**228** Judaea. Bar Kochba Revolt (Schim'ôn Bar Kochba) circa AD 132-135. Bronze Æ 23 mm, 10,04 g Good Fine

**1**



**229** Judaea. Bar Kochba Revolt (Schim'ôn Bar Kochba) circa AD 132-135. Bronze Æ 25 mm, 11,55 g Very Fine

**1**



**230** Judaea. Bar Kochba Revolt (Schim'ôn Bar Kochba) circa AD 132-135. Bronze Æ 24 mm, 9,25 g Nearly Very Fine

**1**



**231** Judaea. Bar Kochba Revolt (Schim'ôn Bar Kochba) circa AD 132-135. Bronze Æ 26 mm, 9,48 g Very Fine

**1**



**232** Judaea. Jerusalem. John Hyrcanus I 135-104 BC. In the name of Seleukid king Antiochos VII Euergetes (Sidetes) Prutah Æ 15 mm, 2,16 g Good Fine

**1**



**233** Judaea. Jerusalem. John Hyrcanus I 135-104 BC. Prutah Æ 15 mm, 2,34 g Very Fine

**1**



**234** Judaea. Jerusalem. John Hyrcanus I 135-104 BC. Prutah Æ 14 mm, 1,89 g Very Fine

**1**



**235** Judaea. Jerusalem. John Hyrcanus I 135-104 BC. Prutah Æ 15 mm, 2,14 g Good Fine

**1**



**236** Judaea. Jerusalem. John Hyrcanus I 135-104 BC. Prutah Æ 13 mm, 1,35 g Nearly Very Fine

**1**



**237** Judaea. Jerusalem. John Hyrcanus I 135-104 BC. Prutah Æ 15 mm, 1,81 g Good Fine

**1**



**238** Judaea. Jerusalem. Antiochos VII Sidetes and John Hyrcanus I 132-130 BC. Prutah Æ 15 mm, 2,47 g Good Fine

**1**



**239** Judaea. Jerusalem. Antiochos VII Sidetes and John Hyrcanus I 132-130 BC. Prutah Æ 15 mm, 2,93 g Good Fine

**1**



**240** Judaea. Jerusalem. Hasmoneans. Alexander Jannaios (Yehonatan) 103-76 BC. Prutah Æ 15 mm, 2,35 g Very Fine

**1**



**241** Judaea. Jerusalem. Hasmoneans. Alexander Jannaios (Yehonatan) 103-76 BC. Prutah Æ 15 mm, 1,50 g Very Fine

**1**



**242** Judaea. Jerusalem. Herodians. Herod I (the Great) 40-4 BC. Prutah Æ 14 mm, 1,15 g Nearly Very Fine

**1**



**243** Judaea. Jerusalem. Herodians. Herod I (the Great) 40-4 BC. 2 Prutot Æ 19 mm, 3,54 g Very Fine

**1**



**244** Judaea. Jerusalem. Mattathias Antigonos (Mattatayah) 40-37 BC. Eight Prutot Æ 23 mm, 12,39 g Fine

**1**



**245** Judaea. Jerusalem. Mattathias Antigonos (Mattatayah) 40-37 BC. Eight Prutot Æ 24 mm, 14,54 g Very Fine

**1**



**246** Judaea. Jerusalem. Mattathias Antigonos (Mattatayah) 40-37 BC. Eight Prutot Æ 25 mm, 16,24 g Very Fine

**1**



**247** Judaea. Jerusalem. Mattathias Antigonos (Mattatayah) 40-37 BC. Eight Prutot Æ 23 mm, 14,72 g Very Fine

**1**



**248** Judaea. Jerusalem. Mattathias Antigonos (Mattatayah) 40-37 BC. Eight Prutot Æ 25 mm, 13,56 g Fine

**1**



**249** Judaea. Jerusalem. Herodians. Herod II Archelaos 4 BC-AD 6. Prutah Æ 14 mm, 1,30 g Very Fine

**1**



**250** Judaea. Jerusalem or Samaritan mint. Herodians. Herod I (the Great) 40-4 BC. 2 Prutot Æ 16 mm, 2,95 g Very Fine

**1**



**251** Judaea. Samaria. Herodians. Herod I (the Great) 40-4 BC. Eight Prutot Æ 23 mm, 4,99 g Good Fine

**1**



**252** Judaea. Samaritan mint, possibly Sebaste. Herodians. Herod I (the Great) 40-4 BC. Eight Prutot Æ 24 mm, 8,43 g Good Fine

**1**



**253** Judaea. Samaritan mint, possibly Sebaste. Herodians. Herod I (the Great) 40-4 BC. Eight Prutot Æ 25 mm, 6,67 g Nearly Very Fine

**1**



**254** Judaea. Samaritan mint, possibly Sebaste. Herodians. Herod I (the Great) 40-4 BC. Eight Prutot Æ 24 mm, 5,68 g Good Fine

**1**



**255** Arabia. Southern. Saba' circa 400-300 BC. 1/4 Unit AR 15 mm, 5,11 g Very Fine

**1**



**256** Nabataean Kingdom. Petra. Obodas III 30-9 BC. Bronze Æ 24 mm, 9,91 g Good Fine

**1**



**257** Nabataean Kingdom. Petra. Aretas IV 9 BC-AD 40. Bronze Æ 11 mm, 1,34 g Very Fine

**1**



**258** Nabataean Kingdom. Petra. Aretas IV 9 BC-AD 40. Bronze Æ 13 mm, 1,92 g Nearly Very Fine

**1**



**259** Nabataean Kingdom. Petra. Aretas IV 9 BC-AD 40. Bronze Æ 14 mm, 2,60 g Good Fine

**1**



**260** Nabataean Kingdom. Petra. Aretas IV, with Shaqilat 9 BC-AD 40. Bronze Æ 19 mm, 4,94 g Very Fine

**1**



**261** Nabataean Kingdom. Petra. Aretas IV, with Shaqilat 9 BC-AD 40. Bronze Æ 19 mm, 3,89 g Very Fine

**1**



**262** Persia. Achaemenid Empire. Sardeis. Time of Darios I to Xerxes II 485-420 BC. Siglos AR 19 mm, 5,59 g Very Fine

**1**



**263** Persia. Achaemenid Empire. Sardeis. Time of Darios I to Xerxes II 485-420 BC. Siglos AR 17 mm, 5,39 g Very Fine

**1**



**264** Persia. Achaemenid Empire. Sardeis. Time of Darios I to Xerxes II 485-420 BC. Siglos AR 16 mm, 5,42 g Fine

**1**



**265** Persia. Achaemenid Empire. Sardeis. Time of Darios I to Xerxes II 485-420 BC. Siglos AR 21 mm, 5,48 g Very Fine

**1**



**266** Persia. Achaemenid Empire. Sardeis. Time of Artaxerxes II to Darios III 404-330 BC. Siglos AR 17 mm, 5,09 g Good Fine

**1**



**267** Persia. Achaemenid Empire. Sardeis. Time of Artaxerxes III to Darios III 350-333 BC. Siglos AR 14 mm, 5,52 g Very Fine

**1**



**268** Persia. Achaemenid Empire. Sardeis. Time of Artaxerxes III to Darios III 350-333 BC. Siglos AR 15 mm, 5,46 g Very Fine

**1**



**269** Persia. Achaemenid Empire. Sardeis. Time of Artaxerxes III to Darios III 350-333 BC. Siglos AR 15 mm, 5,51 g Very Fine

**1**



**270** Kings of Parthia. Gotarzes II AD 48-49. Bronze Æ 15 mm, 3,08 g Very Fine

**1**



**271** Kings of Parthia. Gotarzes II AD 48-49. Chalkous Æ 15 mm, 3,61 g Very Fine

**1**



**272** Kings of Parthia. Seleukia. Phraates IV 38-2 BC. Tetradrachm AR 26 mm, 12,72 g Nearly Very Fine

**1**





**273** Kings of Armenia. Tiridates II (?) AD 217-252. Bronze Æ 23 mm, 6,32 g Very Fine

**1**



**274** Kings of Armenia. Tigranocerta. Tigranes II "the Great" 95-56 BC. Tetradrachm AR 25 mm, 15,69 g Very Fine

**1**



**275** Kings of Armenia Minor. Mithradates, Satrap of Armenia 180-170 BC. Chalkous Æ 11 mm, 1,13 g Very Fine

**1**



**276** Ptolemaic Kingdom of Egypt. Alexandria. Ptolemy I Soter, as satrap 323-305 BC. In the name of Alexander III of Macedon Tetradrachm AR 29 mm, 12,35 g Very Fine

**1**



**277** Ptolemaic Kingdom of Egypt. Alexandria. Ptolemy II Philadelphos 285-246 BC. Bronze Æ 18 mm, 3,76 g Very Fine

**1**



**278** Ptolemaic Kingdom of Egypt. Alexandria. Ptolemy II Philadelphos 285-246 BC. Bronze Æ 23 mm, 8,93 g Very Fine

**1**



**279** Ptolemaic Kingdom of Egypt. Alexandria. Ptolemy III Euergetes 246-221 BC. Bronze Æ 39 mm, 44,55 g Fine

**1**



**280** Ptolemaic Kingdom of Egypt. Alexandria. Ptolemy III Euergetes 246-221 BC. Bronze Æ 39 mm, 47,37 g Good Fine

**1**



**281** Ptolemaic Kingdom of Egypt. Alexandria. Ptolemy III Euergetes 246-221 BC. Bronze Æ 39 mm, 42,62 g Very Fine

**1**



**282** Ptolemaic Kingdom of Egypt. Alexandria. Ptolemy III Euergetes 246-221 BC. Bronze Æ 38 mm, 31,29 g Nearly Very Fine

**1**



**283** Ptolemaic Kingdom of Egypt. Kyrene mint. Ptolemy III Euergetes 246-221 BC. Bronze Æ 20 mm, 9,34 g Very Fine

**1**



**284** Ptolemaic Kingdom of Egypt. Heraklea by the Sea or Seleukeia in Pieria mint. Berenike II, wife of Ptolemy III 244-221 BC. Bronze Æ 18 mm, 5,20 g Fine

**1**



**285** Ptolemaic Kingdom of Egypt. Uncertain mint on the Levantine Coast. Berenike II, wife of Ptolemy III 244-221 BC. Tritartemorion Æ 21 mm, 6,74 g Nearly Very Fine

**1**



**286** Ptolemaic Kingdom of Egypt. Alexandria. Ptolemy V Epiphanes 204-180 BC. Bronze Æ 30 mm, 26,92 g Nearly Very Fine

**1**



**287** Ptolemaic Kingdom of Egypt. Alexandria. Ptolemy V Epiphanes 204-180 BC. Triobol Æ 26 mm, 15,74 g Very Fine

**1**



**288** Ptolemaic Kingdom of Egypt. Kyrene mint. Ptolemy VIII Euergetes II (Physkon) 145-116 BC. Bronze Æ 20 mm, 4,17 g Very Fine

**1**



**289** Ptolemaic Kingdom of Egypt. Kyrene mint. Kleopatra III and Ptolemy IX Soter II (Lathyros) 116-107 BC. Bronze Æ 21 mm, 6,96 g Very Fine

**1**



**290** Ptolemaic Kingdom of Egypt. Kyrene mint. Kleopatra III and Ptolemy IX Soter II (Lathyros) 116-107 BC. Bronze Æ 28 mm, 10,97 g Nearly Very Fine

**1**



**291** Ptolemaic Kingdom of Egypt. Alexandria. Time of Ptolemy IX to Ptolemy XII 116-51 BC. Bronze Æ 20 mm, 7,62 g Fine

**1**



**292** Ptolemaic Kingdom of Egypt. Alexandria. Time of Ptolemy IX to Ptolemy XII 116-51 BC. Bronze Æ 20 mm, 7,88 g Very Fine

**1**



**293** Ptolemaic Kingdom of Egypt. Alexandria. Time of Ptolemy IX to Ptolemy XII 116-51 BC. Bronze Æ 21 mm, 8,80 g Very Fine

**1**



**294** Ptolemaic Kingdom of Egypt. Alexandria. Time of Ptolemy IX to Ptolemy XII 116-51 BC. Bronze Æ 21 mm, 8,29 g Very Fine

**1**



**295** Ptolemaic Kingdom of Egypt. Alexandria. Cleopatra VII Thea Neotera 51-30 BC. Bronze Æ 25 mm, 13,43 g Fine

**1**



**296** Ptolemaic Kingdom of Egypt. Alexandria. Cleopatra VII Thea Neotera 51-30 BC. Bronze Æ 27 mm, 14,22 g Fine

**1**



**297** Zeugitana. Carthage circa 300-264 BC. Bronze Æ 20 mm, 5,70 g Very Fine

**1**



**298** Macedon. Philippi. Augustus 27 BC-AD 14. Bronze Æ 20 mm, 4,33 g Very Fine

**1**



**299** Macedon. Philippi. Augustus 27 BC-AD 14. Bronze Æ 18 mm, 4,26 g Very Fine

**1**



**300** Macedon. Philippi. Tiberius AD 14-37. Bronze Æ 19 mm, 4,21 g Very Fine

**1**



**301** Macedon. Philippi. Gallienus AD 253-268. Bronze Æ 20 mm, 8,38 g Very Fine

**1**



**302** Thrace. Hadrianopolis. Antoninus Pius AD 138-161. Bronze Æ 20 mm, 5,47 g Good Fine

**1**



**303** Thrace. Perinthos. Gordian III AD 238-244. Bronze Æ 19 mm, 4,26 g Fine

**1**



**304** Thrace. Philippopolis. Antoninus Pius AD 138-161. Bronze Æ 20 mm, 3,94 g Nearly Very Fine

**1**



**305** Thrace. Sestos. Domitian AD 81-96. Bronze Æ 19 mm, 5,58 g Good Fine

**1**



**306** Kings of Thrace. Rhoemetalkes I with Augustus 11 BC-AD 12. Bronze Æ 20 mm, 3,41 g Fine

**1**



**307** Kings of Thrace. Rhoemetalkes I with Augustus 11 BC-AD 12. Bronze Æ 20 mm, 4,21 g Very Fine

**1**



**308** Crete. Knossos. Augustus 27 BC-AD 14. Bronze Æ 20 mm, 4,80 g Fine

**1**



**309** Asia Minor. Uncertain mint. Augustus 27 BC-AD 14. Bronze Æ 27 mm, 7,88 g Fine

**1**



**310** Asia Minor. Uncertain mint. Nerva AD 96-98. Cistophoric Tetradrachm AR 25 mm, 9,76 g Very Fine

**1**



**311** Asia Minor. Uncertain mint. Pseudo-autonomous issue. Time of Trajan AD 98-117. Bronze Æ 15 mm, 2,72 g Fine

**1**



**312** Bithynia. Nikaia. Severus Alexander AD 222-235. Bronze Æ 21 mm, 4,24 g Very Fine

**1**



**313** Bithynia. Nikaia. Severus Alexander AD 222-235. Bronze Æ 23 mm, 4,42 g Nearly Very Fine

**1**



**314** Mysia. Lampsakos. Antoninus Pius AD 138-161. Bronze Æ 18 mm, 4,15 g Very Fine

**1**



**315** Mysia. Parion. Salonina AD 254-268. Bronze Æ 23 mm, 4,84 g Nearly Very Fine

**1**



**316** Mysia. Pergamon. Pseudo-autonomous issue AD 40-60. Bronze Æ 17 mm, 3,28 g Fine

**1**



**317** Troas. Abydos. Augustus 27 BC-AD 14. Bronze Æ 12 mm, 1,47 g Nearly Very Fine

**1**



**318** Troas. Alexandria. Caracalla AD 198-217. Bronze Æ 24 mm, 7,77 g Good Fine

**1**



**319** Troas. Alexandria. Severus Alexander AD 222-235. Bronze Æ 25 mm, 6,63 g Very Fine

**1**



**320** Troas. Alexandria. Gallienus AD 253-268. Bronze Æ 22 mm, 5,64 g Very Fine

**1**



**321** Troas. Alexandria. Gallienus AD 253-268. Bronze Æ 21 mm, 4,75 g Very Fine

**1**



**322** Troas. Alexandria. Gallienus AD 253-268. Bronze Æ 21 mm, 6,05 g Very Fine

**1**



**323** Troas. Alexandria. Pseudo-autonomous issue AD 253-268. Bronze Æ 21 mm, 3,53 g Very Fine

**1**



**324** Troas. Alexandria. Pseudo-autonomous issue AD 253-268. Bronze Æ 22 mm, 5,94 g Very Fine

**1**



**325** Troas. Alexandria. Pseudo-autonomous issue AD 253-268. Bronze Æ 20 mm, 4,41 g Very Fine

**1**



**326** Troas. Alexandria. Valerian I AD 253-260. Bronze Æ 21 mm, 5,38 g Very Fine

**1**



**327** Ionia. Ephesos. Augustus 27 BC-AD 14. Cistophoric Tetradrachm AR 25 mm, 9,60 g Good Fine

**1**



**328** Ionia. Ephesos. Augustus with Livia 27 BC-AD 14. Aristion, grammateus and Hieron, magistrate Bronze Æ 18 mm, 6,64 g Nearly Very Fine

**1**





**329** Ionia. Smyrna. Nero with Agrippina Junior AD 54-68. Bronze  
Æ 20 mm, 6,18 g Good Fine

**1**



**330** Pisidia. Antioch. Commodus with Abgar VIII AD 179-192.  
Bronze Æ 22 mm, 5,68 g Very Fine

**1**



**331** Cilicia. Anazarbos. Domitian with Domitia AD 81-96. Bronze  
Æ 22 mm, 7,72 g Very Fine

**1**



**332** Cilicia. Anazarbos. Valerian I AD 253-260. Bronze Æ 30 mm,  
15,73 g Very Fine

**1**



**333** Cilicia. Flaviopolis. Domitian AD 81-96. Bronze Æ 18 mm,  
4,33 g Good Fine

**1**



**334** Cilicia. Korykos. Gordian III AD 238-244. Bronze Æ 26 mm,  
11,93 g Very Fine

**1**



**335** Cilicia. Seleukeia ad Kalykadnon. Philip I Arab AD 244-249.  
Bronze Æ 32 mm, 19,57 g Nearly Very Fine

**1**



**336** Cilicia. Seleukeia ad Kalykadnon. Gallienus AD 253-268.  
Bronze Æ 33 mm, 15,02 g Fine

**1**



**337** Cilicia. Seleukeia ad Kalykadnon. Valerian I AD 253-260.  
Bronze Æ 35 mm, 11,25 g Very Fine

**1**



**338** Cilicia. Tarsos. Caracalla AD 198-217. Bronze Æ 34 mm,  
16,00 g Fine

**1**



**339** Cilicia. Tarsos. Pupienus AD 238. Bronze Æ 36 mm, 28,07 g  
Nearly Very Fine

**1**



**340** Cilicia. Tarsos. Trajan Decius AD 249-251. Bronze Æ 36 mm,  
26,12 g Nearly Very Fine

**1**



**341** Cyprus. Koinon of Cyprus. Caracalla as Caesar AD 196-198.  
Bronze Æ 32 mm, 17,95 g Nearly Very Fine

**1**



**342** Cappadocia. Caesarea. Trajan AD 98-117. Drachm AR 20  
mm, 2,93 g Fine, scratch

**1**



**343** Cappadocia. Caesarea. Hadrian AD 117-138. Hemidrachm AR 14 mm, 1,21 g Fine

**1**



**344** Cappadocia. Caesarea. Gordian III AD 238-244. Bronze Æ 25 mm, 8,76 g Fine

**1**



**345** Cappadocia. Caesarea - Eusebeia. Trajan AD 98-117. Drachm AR 19 mm, 3,01 g Fine

**1**



**346** Cappadocia. Caesarea - Eusebeia. Antoninus Pius AD 138-161. Drachm AR 18 mm, 2,59 g Nearly Very Fine

**1**



**347** Commagene. Samosata. Philip I Arab AD 244-249. Bronze Æ 32 mm, 22,13 g Fine

**1**



**348** Seleucia and Pieria. Antioch. Pseudo-autonomous issue. Time of Augustus 27 BC-AD 14. Bronze Æ 20 mm, 7,93 g Very Fine

**1**



**349** Seleucia and Pieria. Antioch. Nero AD 54-68. Bronze Æ 21 mm, 7,49 g Very Fine

**1**



**350** Seleucia and Pieria. Antioch. Otho AD 69-69. Bronze Æ 23 mm, 6,26 g Good Fine

**1**



**351** Seleucia and Pieria. Antioch. Otho AD 69-69. Bronze Æ 22 mm, 6,81 g Fine

**1**



**352** Seleucia and Pieria. Antioch. Trajan AD 98-117. Tetradrachm AR 25 mm, 13,83 g Very Fine

**1**



**353** Seleucia and Pieria. Antioch. Trajan AD 98-117. Tridrachm AR 23 mm, 9,90 g Fine

**1**



**354** Seleucia and Pieria. Antioch. Gordian III AD 238-244. Billon-Tetradrachm 28 mm, 12,85 g Fine

**1**



**355** Seleucia and Pieria. Antioch. Otacilia Severa AD 244-249. Billon-Tetradrachm 29 mm, 6,25 g Fine

**1**



**356** Seleucia and Pieria. Antioch. Philip I Arab AD 244-249. Billon-Tetradrachm 26 mm, 12,22 g Very Fine

**1**



**357** Seleucis and Pieria. Antioch. Philip I Arab AD 244-249. Billon-Tetradrachm 26 mm, 10,11 g Good Fine

**1**



**358** Seleucis and Pieria. Antioch. Philip I Arab AD 244-249. Billon-Tetradrachm 26 mm, 8,69 g Fine

**1**



**359** Seleucis and Pieria. Antioch. Philip II AD 247-249. Billon-Tetradrachm 28 mm, 10,66 g Fine

**1**



**360** Seleucis and Pieria. Antioch. Philip II AD 247-249. Billon-Tetradrachm 29 mm, 12,49 g Very Fine

**1**



**361** Seleucis and Pieria. Antioch. Philip II AD 247-249. Billon-Tetradrachm 27 mm, 11,09 g Good Fine

**1**



**362** Seleucis and Pieria. Antioch. Herennia Etruscilla AD 249-251. Billon-Tetradrachm 26 mm, 11,92 g Very Fine

**1**



**363** Seleucis and Pieria. Antioch. Trebonianus Gallus AD 251-253. Billon-Tetradrachm 27 mm, 12,48 g Fine

**1**



**364** Seleucia and Pieria. Chalcidice, Chalcis ad Belum. Mark Antony and Cleopatra 32-31 BC. Bronze Æ 19 mm, 5,03 g Very Fine

**1**



**365** Seleucia and Pieria. Emesa. Macrinus AD 217-218. Bronze Æ 33 mm, 23,74 g Fine

**1**



**366** Decapolis. Gadara. Tiberius AD 14-37. Bronze Æ 18 mm, 6,70 g Nearly Very Fine

**1**



**367** Decapolis. Gadara. Nero AD 54-68. Bronze Æ 18 mm, 4,66 g Good Fine

**1**



**368** Decapolis. Gadara. Titus, as Caesar AD 76-78. Bronze Æ 19 mm, 4,97 g Very Fine

**1**



**369** Decapolis. Gadara. Gordian III AD 238-244. Bronze Æ 25 mm, 11,92 g Very Fine

**1**



**370** Decapolis. Philadelphia. Titus AD 79-81. Bronze Æ 24 mm, 11,49 g Nearly Very Fine

**1**



**371** Decapolis. Philadelphia. Titus AD 79-81. Bronze Æ 22 mm, 11,39 g Fine

**1**



**372** Phoenicia. Dora. Hadrian AD 117-138. Bronze Æ 27 mm, 11,65 g Very Fine

**1**



**373** Phoenicia. Uncertain mint. Elagabal AD 218-222. Bronze Æ 21 mm, 7,03 g Good Fine

**1**



**374** Samaria. Nysa-Scythopolis. Commodus AD 180-192. Bronze Æ 21 mm, 8,28 g Very Fine

**1**



**375** Judaea. Aelia Capitolina (Jerusalem). Hadrian with Antoninus Pius as Caesar AD 117-138. Bronze Æ 23 mm, 9,80 g Nearly Very Fine

**1**



**376** Judaea. Aelia Capitolina (Jerusalem). Antoninus Pius AD 138-161. Bronze Æ 23 mm, 9,30 g Good Fine

**1**



**377** Judaea. Ascalon. Hadrian AD 117-138. Bronze Æ 25 mm, 8,95 g Fine

**1**



**378** Judaea. Caesarea Maritima. Herodians. Agrippa II with Domitian AD 50-100. Bronze Æ 20 mm, 5,23 g Very Fine

**1**



**379** Judaea. Caesarea Maritima. Herodians. Agrippa II with Titus AD 50-100. Bronze Æ 21 mm, 7,58 g Nearly Very Fine

**1**



**380** Judaea. Caesarea Maritima. Nero with Agrippina Junior AD 54-68. Bronze Æ 19 mm, 5,79 g Very Fine

**1**



**381** Judaea. Caesarea Maritima. Titus, as Caesar AD 76-78. Bronze Æ 20 mm, 6,49 g Very Fine

**1**



**382** Judaea. Caesarea Maritima. Domitian AD 81-96. Bronze Æ 22 mm, 9,17 g Nearly Very Fine

**1**



**383** Judaea. Caesarea Panias (Caesarea Philippi). Herodians. Agrippa II with Titus AD 50-100. Bronze Æ 20 mm, 6,45 g Good Fine

**1**



**384** Judaea. Caesarea Panias (Caesarea Philippi). Nero and Poppaea AD 54-68. Bronze Æ 20 mm, 5,73 g Fine

**1**





**385** Judaea. Jerusalem. Herodians. Herod I (the Great) 40-4 BC.  
2 Prutot Æ 18 mm, 2,04 g Very Fine

**1**



**386** Judaea. Jerusalem. Marcus Ambibulus, under Augustus AD  
9-12. Prutah Æ 16 mm, 1,50 g Very Fine

**1**



**387** Judaea. Jerusalem. Marcus Ambibulus, under Augustus AD  
9-12. Prutah Æ 16 mm, 2,02 g Very Fine

**1**



**388** Judaea. Jerusalem. Procurators. Marcus Ambibulus AD 9-12.  
Prutah Æ 17 mm, 2,09 g Very Fine

**1**



**389** Judaea. Jerusalem. Procurators. Valerius Gratus AD 15-26.  
In the names of Tiberius and Julia Augusta (Livia) Prutah Æ 17  
mm, 2,37 g Nearly Very Fine

**1**



**390** Judaea. Jerusalem. Procurators. Valerius Gratus AD 15-26.  
Prutah Æ 19 mm, 1,89 g Very Fine

**1**



**391** Judaea. Jerusalem. Procurators. Pontius Pilate AD 26-36. In  
the name of Tiberius Bronze Æ 15 mm, 1,41 g Nearly Very Fine

**1**



**392** Judaea. Jerusalem. Procurators. Pontius Pilate AD 26-36. In the name of Tiberius Prutah Æ 16 mm, 2,36 g Nearly Very Fine

**1**



**393** Judaea. Jerusalem. Procurators. Pontius Pilate AD 26-36. Prutah Æ 16 mm, 2,37 g Very Fine

**1**



**394** Judaea. Jerusalem. Procurators. Pontius Pilate AD 26-36. In the names of Julia Augusta (Livia) and Tiberius Prutah Æ 19 mm, 2,95 g Nearly Very Fine

**1**



**395** Judaea. Jerusalem. Procurators. Pontius Pilate AD 26-36. In the names of Julia Augusta (Livia) and Tiberius Prutah Æ 18 mm, 2,23 g Very Fine

**1**



**396** Judaea. Jerusalem. Herodians. Agrippa I AD 37-43. Prutah Æ 17 mm, 2,23 g Very Fine

**1**



**397** Judaea. Jerusalem. Herodians. Agrippa I AD 37-43. Prutah Æ 18 mm, 2,32 g Very Fine

**1**



**398** Judaea. Jerusalem. Herodians. Agrippa I AD 37-43. Prutah Æ 19 mm, 3,16 g Very Fine

**1**



**399** Judaea. Jerusalem. Procurators. Porcius Festus AD 59-62. Prutah Æ 16 mm, 2,12 g Good Fine

**1**



**400** Judaea. Jerusalem. First Jewish War AD 66-70. Prutah Æ 17 mm, 2,97 g Very Fine

**1**



**401** Judaea. Neapolis. Elagabal AD 218-222. Bronze Æ 19 mm, 5,80 g Good Fine

**1**



**402** Judaea. Neapolis. Philip I Arab AD 244-249. Bronze Æ 27 mm, 13,41 g Fine

**1**



**403** Judaea. Sepphoris (Diocaesarea). Trajan AD 98-117. Bronze Æ 27 mm, 15,05 g Nearly Very Fine

**1**



**404** Judaea. Tiberias. Vespasian AD 69-79. Bronze Æ 27 mm, 18,21 g Good Fine

**1**



**405** Mesopotamia. Hatra. Pseudo-autonomous issue AD 117-138. Bronze Æ 20 mm, 10,25 g Fine

**1**



**406** Mesopotamia. Rhesaena. Trajan Decius AD 249-251. Bronze Æ 26 mm, 14,27 g Fine

**1**



**407** Arabia. Bostra. Philip II AD 247-249. Bronze Æ 31 mm, 16,14 g Fine

**1**



**408** Arabia. Philippopolis. Philip II AD 247-249. Bronze Æ 30 mm, 15,39 g Very Fine

**1**



**409** Arabia. Rabbathmoba. Caracalla AD 198-217. Bronze Æ 30 mm, 14,17 g Good Fine

**1**



**410** Egypt. Alexandria. Claudius AD 41-54. Billon-Tetradrachm 24 mm, 12,40 g Very Fine

**1**



**411** Egypt. Alexandria. Claudius AD 41-54. Billon-Tetradrachm 23 mm, 11,49 g Very Fine

**1**



**412** Egypt. Alexandria. Nero AD 54-68. Billon-Tetradrachm 24 mm, 12,79 g Very Fine

**1**



**413** Egypt. Alexandria. Nero AD 54-68. Billon-Tetradrachm 23 mm, 13,46 g Very Fine

**1**



**414** Egypt. Alexandria. Nero AD 54-68. Billon-Tetradrachm 25 mm, 11,35 g Nearly Very Fine

**1**



**415** Egypt. Alexandria. Nero AD 54-68. Billon-Tetradrachm 25 mm, 12,49 g Very Fine

**1**



**416** Egypt. Alexandria. Nero AD 54-68. Billon-Tetradrachm 25 mm, 12,57 g Very Fine

**1**



**417** Egypt. Alexandria. Nero AD 54-68. Billon-Tetradrachm 27 mm, 12,43 g Very Fine

**1**



**418** Egypt. Alexandria. Nero AD 54-68. Billon-Tetradrachm 24 mm, 13,11 g Very Fine

**1**



**419** Egypt. Alexandria. Galba AD 68-69. Billon-Tetradrachm 23 mm, 11,75 g Good Fine

**1**



**420** Egypt. Alexandria. Galba AD 68-69. Billon-Tetradrachm 25 mm, 11,82 g Very Fine

**1**



**421** Egypt. Alexandria. Galba AD 68-69. Billon-Tetradrachm 25 mm, 12,30 g Very Fine

**1**



**422** Egypt. Alexandria. Vespasian AD 69-79. Billon-Tetradrachm 26 mm, 13,08 g Very Fine

**1**



**423** Egypt. Alexandria. Vespasian AD 69-79. Billon-Tetradrachm 27 mm, 10,16 g Very Fine

**1**



**424** Egypt. Alexandria. Vespasian and Titus AD 69-79. Billon-Tetradrachm 25 mm, 13,11 g Very Fine

**1**



**425** Egypt. Alexandria. Domitian AD 81-96. Drachm Æ 36 mm, 25,09 g Fine

**1**



**426** Egypt. Alexandria. Domitian AD 81-96. Diobol Æ 24 mm, 9,37 g Fine

**1**



**427** Egypt. Alexandria. Domitian AD 81-96. Diobol Æ 24 mm, 8,13 g Nearly Very Fine

**1**



**428** Egypt. Alexandria. Domitian AD 81-96. Diobol Æ 22 mm, 8,56 g Fine

**1**



**429** Egypt. Alexandria. Trajan AD 98-117. Billon-Tetradrachm 25 mm, 11,36 g Good Fine

**1**



**430** Egypt. Alexandria. Trajan AD 98-117. Billon-Tetradrachm 25 mm, 11,24 g Very Fine

**1**



**431** Egypt. Alexandria. Trajan AD 98-117. Dichalkon Æ 15 mm, 2,85 g Good Fine

**1**



**432** Egypt. Alexandria. Hadrian AD 117-138. Billon-Tetradrachm 25 mm, 10,50 g Very Fine

**1**



**433** Egypt. Alexandria. Hadrian AD 117-138. Billon-Tetradrachm 25 mm, 13,06 g Nearly Very Fine

**1**



**434** Egypt. Alexandria. Hadrian AD 117-138. Billon-Tetradrachm  
25 mm, 13,05 g Very Fine

**1**



**435** Egypt. Alexandria. Hadrian AD 117-138. Billon-Tetradrachm  
24 mm, 11,22 g Nearly Very Fine

**1**



**436** Egypt. Alexandria. Hadrian AD 117-138. Billon-Tetradrachm  
25 mm, 12,68 g Very Fine

**1**



**437** Egypt. Alexandria. Hadrian AD 117-138. Billon-Tetradrachm  
23 mm, 12,12 g Very Fine

**1**



**438** Egypt. Alexandria. Hadrian AD 117-138. Billon-Tetradrachm  
25 mm, 12,08 g Very Fine

**1**



**439** Egypt. Alexandria. Hadrian AD 117-138. Billon-Tetradrachm  
24 mm, 12,68 g Nearly Very Fine

**1**



**440** Egypt. Alexandria. Hadrian AD 117-138. Billon-Tetradrachm  
23 mm, 12,51 g Very Fine

**1**





**441** Egypt. Alexandria. Hadrian AD 117-138. Billon-Tetradrachm  
25 mm, 11,80 g Nearly Very Fine

**1**



**442** Egypt. Alexandria. Hadrian AD 117-138. Billon-Tetradrachm  
24 mm, 11,28 g Very Fine

**1**



**443** Egypt. Alexandria. Hadrian AD 117-138. Billon-Tetradrachm  
23 mm, 12,37 g Very Fine

**1**



**444** Egypt. Alexandria. Hadrian AD 117-138. Billon-Tetradrachm  
22 mm, 12,75 g Very Fine

**1**



**445** Egypt. Alexandria. Hadrian AD 117-138. Billon-Tetradrachm  
25 mm, 12,26 g Very Fine

**1**



**446** Egypt. Alexandria. Hadrian AD 117-138. Drachm Æ 33 mm,  
23,53 g Fine

**1**



**447** Egypt. Alexandria. Hadrian AD 117-138. Drachm Æ 34 mm,  
19,34 g Fine

**1**



**448** Egypt. Alexandria. Hadrian AD 117-138. Dichalkon Æ 14 mm, 1,15 g Fine

**1**



**449** Egypt. Alexandria. Antoninus Pius AD 138-161. Billon-Tetradrachm 22 mm, 12,55 g Very Fine

**1**



**450** Egypt. Alexandria. Antoninus Pius AD 138-161. Billon-Tetradrachm 23 mm, 13,08 g Very Fine

**1**



**451** Egypt. Alexandria. Antoninus Pius AD 138-161. Billon-Tetradrachm 25 mm, 11,64 g Very Fine

**1**



**452** Egypt. Alexandria. Antoninus Pius AD 138-161. Billon-Tetradrachm 25 mm, 10,72 g Very Fine

**1**



**453** Egypt. Alexandria. Antoninus Pius AD 138-161. Billon-Tetradrachm 24 mm, 12,22 g Very Fine

**1**



**454** Egypt. Alexandria. Antoninus Pius AD 138-161. Billon-Tetradrachm 23 mm, 12,89 g Very Fine

**1**



**455** Egypt. Alexandria. Antoninus Pius AD 138-161. Billon-Tetradrachm 23 mm, 12,73 g Nearly Very Fine

**1**



**456** Egypt. Alexandria. Antoninus Pius AD 138-161. Drachm Æ 34 mm, 20,77 g Fine

**1**



**457** Egypt. Alexandria. Antoninus Pius AD 138-161. Diobol Æ 25 mm, 8,28 g Nearly Very Fine

**1**



**458** Egypt. Alexandria. Severus Alexander AD 222-235. Billon-Tetradrachm 24 mm, 14,33 g Very Fine

**1**



**459** Egypt. Alexandria. Severus Alexander AD 222-235. Billon-Tetradrachm 24 mm, 12,66 g Very Fine

**1**



**460** Egypt. Alexandria. Maximus, Caesar AD 236-238. Billon-Tetradrachm 22 mm, 11,38 g Good Fine

**1**



**461** Egypt. Alexandria. Philip I Arab AD 244-249. Potin Tetradrachm 24 mm, 12,04 g Nearly Very Fine

**1**



**462** Egypt. Alexandria. Gallienus AD 253-268. Billon-Tetradrachm 23 mm, 10,36 g Very Fine

**1**



**463** Egypt. Alexandria. Valerian I AD 253-260. Billon-Tetradrachm 23 mm, 10,45 g Very Fine

**1**



**464** Egypt. Alexandria. Valerian I AD 253-260. Billon-Tetradrachm 23 mm, 11,33 g Very Fine

**1**



**465** Egypt. Alexandria. Claudius II (Gothicus) AD 268-270. Potin Tetradrachm 20 mm, 9,56 g Very Fine

**1**



**466** Egypt. Alexandria. Aurelian and Vabalathus AD 270-275. Potin Tetradrachm 21 mm, 6,72 g Very Fine

**1**



**467** Egypt. Alexandria. Probus AD 276-282. Potin Tetradrachm 21 mm, 6,75 g Very Fine

**1**



**468** Egypt. Alexandria. Probus AD 276-282. Potin Tetradrachm 20 mm, 8,40 g Very Fine

**1**



**469** Egypt. Alexandria. Probus AD 276-282. Potin Tetradrachm 20 mm, 8,17 g Very Fine

**1**



**470** Egypt. Alexandria. Carus AD 282-283. Potin Tetradrachm 20 mm, 6,70 g Nearly Very Fine

**1**



**471** Egypt. Alexandria. Carus AD 282-283. Potin Tetradrachm 20 mm, 6,96 g Very Fine

**1**



**472** Egypt. Alexandria. Numerian, as Caesar AD 282-283. Potin Tetradrachm 20 mm, 5,34 g Fine

**1**



**473** Egypt. Alexandria. Diocletian AD 284-305. Potin Tetradrachm 20 mm, 6,73 g Very Fine

**1**



**474** Egypt. Alexandria. Diocletian AD 284-305. Potin Tetradrachm 20 mm, 7,53 g Very Fine

**1**



**475** Egypt. Alexandria. Diocletian AD 284-305. Potin Tetradrachm 20 mm, 7,12 g Very Fine

**1**



**476** Egypt. Alexandria. Diocletian AD 284-305. Potin  
Tetradrachm 18 mm, 5,86 g Fine

**1**



**477** Egypt. Alexandria. Diocletian AD 284-305. Potin  
Tetradrachm 20 mm, 6,55 g Nearly Very Fine

**1**



**478** Egypt. Alexandria. Diocletian AD 284-305. Potin  
Tetradrachm 19 mm, 6,24 g Nearly Very Fine

**1**



**479** Egypt. Alexandria. Diocletian AD 284-305. Potin  
Tetradrachm 20 mm, 6,84 g Nearly Very Fine

**1**



**480** Egypt. Alexandria. Diocletian AD 284-305. Potin  
Tetradrachm 19 mm, 7,34 g Good Fine

**1**



**481** Egypt. Alexandria. Diocletian AD 284-305. Potin  
Tetradrachm 20 mm, 7,73 g Very Fine

**1**



**482** Egypt. Alexandria. Diocletian AD 284-305. Potin  
Tetradrachm 19 mm, 6,83 g Very Fine

**1**



**483** Egypt. Alexandria. Diocletian AD 284-305. Potin Tetrachm 20 mm, 8,25 g Very Fine

**1**



**484** Egypt. Alexandria. Maximianus Herculius AD 286-305. Potin Tetrachm 20 mm, 9,00 g Very Fine

**1**



**485** Egypt. Alexandria. Maximianus Herculius AD 286-305. Potin Tetrachm 20 mm, 7,82 g Very Fine

**1**



**486** Egypt. Alexandria. Maximianus Herculius AD 286-305. Potin Tetrachm 20 mm, 7,51 g Good Fine

**1**



**487** Egypt. Alexandria. Maximianus Herculius AD 286-305. Potin Tetrachm 20 mm, 7,36 g Good Fine

**1**



**488** Egypt. Alexandria. Maximianus Herculius AD 286-305. Potin Tetrachm 20 mm, 8,06 g Fine

**1**



**489** Uncertain . AD 100-200. Bronze Æ 26 mm, 14,57 g Fine

**1**



**490** Anonymous 169-158 BC. Rome Semis Æ 15 mm, 2,99 g  
Nearly Very Fine

**1**



**491** C. Terentius Lucanus 147 BC. Rome Denarius AR 17 mm,  
2,59 g Good Fine

**1**



**492** L. Antestius Gragulus 136 BC. Rome Denarius AR 19 mm,  
3,73 g Very Fine

**1**



**493** Q. Caecilius Metellus 130 BC. Rome Denarius AR 20 mm,  
3,74 g Nearly Very Fine

**1**



**494** M. Furius L. f. Philus 120 BC. Rome Denarius AR 20 mm,  
3,76 g Nearly Very Fine

**1**



**495** Cn. Blasio Cn.f 112-111 BC. Rome Denarius AR 20 mm, 3,70  
g Very Fine

**1**



**496** Cn. Blasio Cn.f 112-111 BC. Rome Denarius AR 18 mm, 3,91  
g Very Fine

**1**





**497** Appius Claudius Pulcher, T. Manlius Mancius, and Q. Urbinus 111-110 BC. Rome Denarius AR 17 mm, 3,45 g Nearly Very Fine

**1**



**498** L. Flaminius Chilo 109-108 BC. Rome Denarius AR 20 mm, 3,68 g Nearly Very Fine

**1**



**499** T. Cloelius 98 BC. Rome Quinarius AR 15 mm, 1,38 g Fine

**1**



**500** L. Pomponius Molo 97 BC. Rome Denarius AR 16 mm, 3,66 g Very Fine

**1**



**501** C. Allius Bala 92 BC. Rome Denarius AR 17 mm, 3,31 g Fine

**1**



**502** C. Vibius C.f. Pansa 90 BC. Rome Denarius AR 17 mm, 3,66 g Very Fine

**1**



**503** L. Titurius L.f. Sabinus 89 BC. Rome Denarius AR 18 mm, 3,85 g Nearly Very Fine

**1**



**504** M. Porcius Cato 89 BC. Rome Quinarius AR 14 mm, 1,81 g  
Very Fine

**1**



**505** Anonymous 86 BC. Rome Denarius AR 19 mm, 3,95 g  
Very Fine

**1**



**506** L. Censorinus 82 BC. Rome Denarius AR 19 mm, 3,74 g  
Nearly Very Fine

**1**



**507** P. Satrienus 77 BC. Rome Denarius AR 20 mm, 3,23 g  
Fine

**1**



**508** Cn. Egnatius Cn.f Cn.n Maxsumus 76 BC. Rome Denarius AR  
19 mm, 3,23 g  
Fine

**1**



**509** L. Scribonius Libo 62 BC. Rome Denarius AR 19 mm, 3,49 g  
Fine

**1**



**510** C. Considius Nonianus 56 BC. Rome Denarius AR 18 mm,  
2,93 g  
Very Fine

**1**



**511** Mark Antony 32-31 BC. Military mint moving with M.Antony  
Denarius AR 17 mm, 3,11 g Fine

**1**



**512** Mark Antony 32-31 BC. Military mint moving with M.Antony  
Denarius AR 18 mm, 3,19 g Fine

**1**



**513** Mark Antony 32-31 BC. Military mint moving with M.Antony  
Denarius AR 17 mm, 3,27 g Fine

**1**



**514** Mark Antony 32-31 BC. Military mint moving with M.Antony  
Denarius AR 17 mm, 3,42 g Fine

**1**



**515** Mark Antony 32-31 BC. Military mint moving with M.Antony  
Denarius AR 18 mm, 3,10 g Fine

**1**



**516** Mark Antony 32-31 BC. Military mint moving with M.Antony  
Denarius AR 17 mm, 3,54 g Fine

**1**



**517** Mark Antony 32-31 BC. Military mint moving with M.Antony  
Denarius AR 17 mm, 3,41 g Fine

**1**



**518** Mark Antony 32-31 BC. Military mint moving with M.Antony  
Denarius AR 18 mm, 3,29 g Fine

**1**



**519** Augustus 27 BC-AD 14. Lugdunum Denarius AR 19 mm,  
3,66 g Nearly Very Fine

**1**



**520** Augustus 27 BC-AD 14. Lugdunum Denarius AR 20 mm,  
3,17 g Fine

**1**



**521** Augustus 27 BC-AD 14. Spanish mint (Colonia Partica)  
Denarius AR 21 mm, 2,92 g Fine

**1**



**522** AD 1-50. Rome As Æ 25 mm, 9,54 g Fine

**1**



**523** AD 1-50. Rome As Æ 25 mm, 6,44 g Fine

**1**



**524** AD 1-50. Rome As Æ 26 mm, 6,07 g Fine

**1**



**525** Livia, wife of Augustus AD 14-29. Rome As Æ 30 mm, 13,07 g Good Fine

**1**



**526** Tiberius AD 14-37. Lugdunum As Æ 25 mm, 8,32 g Fine

**1**



**527** Claudius AD 41-54. Rome As Æ 30 mm, 10,11 g Nearly Very Fine

**1**



**528** Nero AD 54-68. Rome As Æ 28 mm, 11,34 g Good Fine

**1**



**529** Domitian as Caesar AD 69-81. Rome Denarius AR 18 mm, 2,91 g Fine

**1**



**530** Vespasian AD 69-79. Rome Dupondius Æ 28 mm, 11,95 g Fine

**1**



**531** Vitellius AD 69-69. Rome Denarius AR 17 mm, 2,85 g Very Fine, edge fault

**1**



**532** Titus AD 79-81. Rome Denarius AR 18 mm, 3,00 g Nearly Very Fine

**1**



**533** Domitian AD 81-96. Rome Denarius AR 18 mm, 3,01 g Very Fine

**1**



**534** Nerva AD 96-98. Rome Denarius AR 17 mm, 2,83 g Nearly Very Fine

**1**



**535** Nerva AD 96-98. Rome Denarius AR 18 mm, 3,21 g Fine

**1**



**536** Trajan AD 98-117. Rome Denarius AR 19 mm, 2,75 g Nearly Very Fine

**1**



**537** Trajan AD 98-117. Rome Denarius AR 19 mm, 2,88 g Very Fine

**1**



**538** Trajan AD 98-117. Rome Denarius AR 18 mm, 2,42 g Very Fine

**1**



**539** Trajan AD 98-117. Rome Denarius AR 18 mm, 2,84 g Fine **1**



**540** Trajan AD 98-117. Rome Denarius AR 19 mm, 2,76 g Very Fine **1**



**541** Hadrian AD 117-138. Rome Denarius AR 19 mm, 3,30 g Very Fine **1**



**542** Hadrian AD 117-138. Rome Denarius AR 19 mm, 2,80 g Very Fine **1**



**543** Hadrian AD 117-138. Rome Denarius AR 17 mm, 3,24 g Very Fine **1**



**544** Hadrian AD 117-138. Rome Denarius AR 20 mm, 2,72 g Very Fine **1**



**545** Hadrian AD 117-138. Rome Denarius AR 18 mm, 3,02 g Very Fine **1**



**546** Hadrian AD 117-138. Rome Denarius AR 18 mm, 2,80 g  
Good Fine

**1**



**547** Hadrian AD 117-138. Rome Denarius AR 18 mm, 3,07 g  
Fine

**1**



**548** Hadrian AD 117-138. Rome Denarius AR 18 mm, 3,57 g  
Good Fine

**1**



**549** Hadrian AD 117-138. Rome Sestertius Æ 32 mm, 23,12 g  
Fine

**1**



**550** Hadrian AD 117-138. Rome Sestertius Æ 33 mm, 25,45 g  
Good Fine

**1**



**551** Sabina. Augusta AD 128-137. Rome As Æ 25 mm, 11,09 g  
Fine

**1**



**552** Aelius, as Caesar AD 136-138. Rome Sestertius Æ 29 mm,  
17,83 g Very Fine

**1**





**553** Aelius, as Caesar AD 136-138. Rome As Æ 26 mm, 12,85 g  
Very Fine

**1**



**554** Antoninus Pius AD 138-161. Rome Denarius AR 17 mm,  
3,13 g Very Fine

**1**



**555** Antoninus Pius AD 138-161. Rome Denarius AR 18 mm,  
2,48 g Nearly Very Fine

**1**



**556** Antoninus Pius AD 138-161. Rome Denarius AR 18 mm,  
3,30 g Very Fine

**1**



**557** Antoninus Pius AD 138-161. Rome Denarius AR 17 mm,  
3,42 g Nearly Very Fine

**1**



**558** Antoninus Pius AD 138-161. Rome Denarius AR 16 mm,  
2,90 g Nearly Very Fine

**1**



**559** Antoninus Pius AD 138-161. Rome Dupondius Æ 26 mm,  
11,40 g Fine

**1**



**560** Antoninus Pius AD 138-161. Rome As Æ 25 mm, 9,80 g Fine **1**



**561** Diva Faustina I AD 140-141. Rome Denarius AR 18 mm, 3,03 g Nearly Very Fine **1**



**562** Diva Faustina I AD 140-141. Rome Denarius AR 18 mm, 3,17 g Very Fine **1**



**563** Diva Faustina I AD 140-141. Rome Denarius AR 18 mm, 3,32 g Very Fine **1**



**564** Faustina II AD 147-175. Rome As Æ 26 mm, 7,92 g Fine **1**



**565** Divus Antoninus Pius AD 161. Rome Denarius AR 17 mm, 3,35 g Nearly Very Fine **1**



**566** Lucius Verus AD 161-169. Rome Denarius AR 18 mm, 2,59 g Very Fine **1**



**567** Marcus Aurelius AD 161-180. Rome Denarius AR 19 mm, 2,84 g Very Fine

**1**



**568** Commodus AD 180-192. Rome Denarius AR 18 mm, 2,20 g Very Fine

**1**



**569** Commodus AD 180-192. Rome Denarius AR 18 mm, 2,08 g Nearly Very Fine

**1**



**570** Commodus AD 180-192. Rome Denarius AR 19 mm, 2,99 g Very Fine

**1**



**571** Commodus AD 180-192. Rome Denarius AR 18 mm, 3,36 g Very Fine

**1**



**572** Commodus AD 180-192. Rome Denarius AR 17 mm, 3,10 g Very Fine

**1**



**573** Julia Domna. Augusta AD 193-217. Rome Denarius AR 20 mm, 2,52 g Very Fine

**1**



**574** Julia Domna. Augusta AD 193-217. Rome Denarius AR 20 mm, 2,13 g Fine

**1**



**575** Julia Domna. Augusta AD 193-217. Rome Denarius AR 21 mm, 3,35 g Very Fine

**1**



**576** Julia Domna. Augusta AD 193-217. Rome Denarius AR 18 mm, 3,41 g Very Fine

**1**



**577** Julia Domna. Augusta AD 193-217. Rome Denarius AR 19 mm, 3,06 g Very Fine

**1**



**578** Julia Domna. Augusta AD 193-217. Rome Denarius AR 18 mm, 3,43 g Very Fine

**1**



**579** Julia Domna. Augusta AD 193-217. Rome Denarius AR 20 mm, 3,06 g Very Fine

**1**



**580** Julia Domna. Augusta AD 193-217. Rome Antoninianus AR 23 mm, 1,80 g Fine

**1**



**581** Septimius Severus AD 193-211. Emesa Denarius AR 17 mm,  
2,17 g Very Fine

**1**



**582** Septimius Severus AD 193-211. Emesa Denarius AR 19 mm,  
3,45 g Nearly Very Fine

**1**



**583** Septimius Severus AD 193-211. Emesa Denarius AR 19 mm,  
3,22 g Very Fine

**1**



**584** Septimius Severus AD 193-211. Rome Denarius AR 19 mm,  
2,43 g Very Fine

**1**



**585** Septimius Severus AD 193-211. Rome Denarius AR 20 mm,  
2,90 g Very Fine

**1**



**586** Septimius Severus AD 193-211. Rome Denarius AR 16 mm,  
3,76 g Very Fine

**1**



**587** Septimius Severus AD 193-211. Rome Denarius AR 17 mm,  
2,80 g Very Fine

**1**



**588** Septimius Severus AD 193-211. Rome Denarius AR 17 mm,  
3,37 g Very Fine

**1**



**589** Septimius Severus AD 193-211. Rome Denarius AR 16 mm,  
2,81 g Very Fine

**1**



**590** Septimius Severus AD 193-211. Rome Denarius AR 18 mm,  
3,30 g Very Fine

**1**



**591** Septimius Severus AD 193-211. Rome Denarius AR 17 mm,  
3,06 g Very Fine

**1**



**592** Septimius Severus AD 193-211. Rome Denarius AR 17 mm,  
3,48 g Very Fine

**1**



**593** Septimius Severus AD 193-211. Rome Denarius AR 18 mm,  
3,33 g Very Fine

**1**



**594** Septimius Severus AD 193-211. Rome Denarius AR 19 mm,  
3,16 g Very Fine

**1**



**595** Septimius Severus AD 193-211. Rome Denarius AR 18 mm,  
3,38 g Very Fine

**1**



**596** Septimius Severus AD 193-211. Rome Denarius AR 18 mm,  
2,79 g Very Fine

**1**



**597** Septimius Severus AD 193-211. Rome Denarius AR 18 mm,  
3,44 g Very Fine

**1**



**598** Septimius Severus AD 193-211. Rome Denarius AR 18 mm,  
3,16 g Nearly Very Fine

**1**



**599** Septimius Severus AD 193-211. Rome Denarius AR 16 mm,  
3,35 g Very Fine

**1**



**600** Septimius Severus AD 193-211. Rome Denarius AR 19 mm,  
3,47 g Very Fine

**1**



**601** Septimius Severus AD 193-211. Rome Denarius AR 16 mm,  
3,20 g Very Fine

**1**



**602** Septimius Severus AD 193-211. Rome Denarius AR 19 mm, 3,32 g Very Fine

**1**



**603** Septimius Severus AD 193-211. Rome Denarius AR 18 mm, 2,51 g Very Fine

**1**



**604** Caracalla, as Caesar AD 196-198. Laodicea ad Mare Denarius AR 18 mm, 2,60 g Nearly Very Fine

**1**



**605** Caracalla, as Caesar AD 196-198. Rome Denarius AR 18 mm, 2,63 g Very Fine

**1**



**606** Caracalla, as Caesar AD 196-198. Rome Denarius AR 17 mm, 2,94 g Very Fine

**1**



**607** Caracalla, as Caesar AD 196-198. Rome Denarius AR 19 mm, 2,96 g Very Fine

**1**



**608** Caracalla AD 198-217. Contemporary barbaric imitation Denarius AR 19 mm, 2,24 g Very Fine

**1**





**609** Caracalla AD 198-217. Rome Denarius AR 20 mm, 2,30 g  
Very Fine

**1**



**610** Caracalla AD 198-217. Rome Denarius AR 19 mm, 2,45 g  
Very Fine

**1**



**611** Caracalla AD 198-217. Rome Denarius AR 19 mm, 2,73 g  
Very Fine

**1**



**612** Caracalla AD 198-217. Rome Denarius AR 20 mm, 3,05 g  
Very Fine

**1**



**613** Caracalla AD 198-217. Rome Denarius AR 19 mm, 3,72 g  
Very Fine

**1**



**614** Caracalla AD 198-217. Rome Denarius AR 21 mm, 3,12 g  
Very Fine

**1**



**615** Caracalla AD 198-217. Rome Denarius AR 20 mm, 2,92 g  
Very Fine

**1**



**616** Caracalla AD 198-217. Rome Denarius AR 17 mm, 3,84 g  
Very Fine

**1**



**617** Plautilla. Augusta AD 202-205. Rome Denarius AR 19 mm,  
2,06 g Nearly Very Fine

**1**



**618** Elagabal AD 218-222. Rome Denarius AR 18 mm, 2,89 g  
Very Fine

**1**



**619** Julia Maesa. Augusta AD 218-224. Rome Denarius AR 20  
mm, 3,15 g Very Fine

**1**



**620** Julia Soaemias. Augusta AD 218-222. Rome Denarius AR 20  
mm, 2,82 g Very Fine

**1**



**621** Severus Alexander AD 222-235. Antioch Denarius AR 19  
mm, 3,28 g Very Fine

**1**



**622** Severus Alexander AD 222-235. Antioch Denarius AR 20  
mm, 2,99 g Very Fine

**1**



**623** Severus Alexander AD 222-235. Antioch Denarius AR 19 mm, 2,12 g Very Fine

**1**



**624** Severus Alexander AD 222-235. Antioch Denarius AR 17 mm, 3,19 g Very Fine

**1**



**625** Severus Alexander AD 222-235. Antioch Denarius AR 19 mm, 2,54 g Very Fine

**1**



**626** Severus Alexander AD 222-235. Rome Denarius AR 20 mm, 2,31 g Good Fine

**1**



**627** Severus Alexander AD 222-235. Rome Denarius AR 20 mm, 2,93 g Very Fine

**1**



**628** Severus Alexander AD 222-235. Rome Denarius AR 20 mm, 3,12 g Very Fine

**1**



**629** Severus Alexander AD 222-235. Rome Denarius AR 19 mm, 2,91 g Very Fine

**1**



**630** Severus Alexander AD 222-235. Rome Denarius AR 19 mm, 2,42 g Very Fine

**1**



**631** Severus Alexander AD 222-235. Rome Denarius AR 21 mm, 2,92 g Very Fine

**1**



**632** Severus Alexander AD 222-235. Rome Denarius AR 19 mm, 3,62 g Very Fine

**1**



**633** Severus Alexander AD 222-235. Rome Denarius AR 21 mm, 2,70 g Very Fine

**1**



**634** Severus Alexander AD 222-235. Rome As Æ 25 mm, 9,71 g Good Fine

**1**



**635** Julia Mamaea. Augusta AD 225-235. Rome Fourré Denarius Æ 20 mm, 3,02 g Good Fine

**1**



**636** Julia Mamaea. Augusta AD 225-235. Rome Denarius AR 20 mm, 2,86 g Very Fine

**1**



**637** Maximinus I Thrax AD 235-238. Rome Denarius AR 20 mm, 2,04 g Fine

**1**



**638** Gordian III AD 238-244. Antioch Antoninianus AR 23 mm, 2,58 g Very Fine

**1**



**639** Gordian III AD 238-244. Antioch Antoninianus AR 24 mm, 4,71 g Very Fine

**1**



**640** Gordian III AD 238-244. Rome Denarius AR 20 mm, 2,28 g Very Fine

**1**



**641** Gordian III AD 238-244. Rome Denarius AR 19 mm, 2,99 g Very Fine

**1**



**642** Gordian III AD 238-244. Rome Antoninianus AR 21 mm, 3,75 g Very Fine

**1**



**643** Gordian III AD 238-244. Rome Antoninianus AR 22 mm, 4,02 g Very Fine

**1**



**644** Gordian III AD 238-244. Rome Antoninianus AR 22 mm, 5,24 g Very Fine

**1**



**645** Gordian III AD 238-244. Rome Antoninianus AR 22 mm, 4,76 g Very Fine

**1**



**646** Gordian III AD 238-244. Rome Antoninianus AR 24 mm, 4,49 g Very Fine

**1**



**647** Philip I Arab AD 244-249. Rome Antoninianus AR 25 mm, 4,09 g Nearly Very Fine

**1**



**648** Philip I Arab AD 244-249. Rome Antoninianus AR 24 mm, 4,29 g Nearly Very Fine

**1**



**649** Philip I Arab AD 244-249. Rome Sestertius Æ 30 mm, 18,22 g Very Fine

**1**



**650** Herennia Etruscilla AD 249-251. Contemporary barbaric imitation Antoninianus Æ 23 mm, 3,75 g Nearly Very Fine

**1**



**651** Trajan Decius AD 249-251. Rome Antoninianus AR 25 mm, 4,64 g Very Fine

**1**



**652** Volusian AD 251-253. Rome Antoninianus AR 20 mm, 1,65 g Good Fine

**1**



**653** Gallienus AD 253-268. Antioch Billon Antoninianus 20 mm, 4,11 g Nearly Very Fine

**1**



**654** Gallienus AD 253-268. Antioch Billon Antoninianus 22 mm, 4,64 g Very Fine

**1**



**655** Gallienus AD 253-268. Antioch Billon Antoninianus 21 mm, 4,08 g Very Fine

**1**



**656** Gallienus AD 253-268. Antioch Billon Antoninianus 22 mm, 4,06 g Good Very Fine

**1**



**657** Gallienus AD 253-268. Colonia Agrippinensium (Cologne) Antoninianus AR 21 mm, 4,25 g Very Fine

**1**



**658** Gallienus AD 253-268. Samosata or Antioch Billon Antoninianus 21 mm, 3,96 g Nearly Very Fine

**1**



**659** Valerian I AD 253-260. Rome Billon Antoninianus 22 mm, 3,60 g Very Fine

**1**



**660** Salonina AD 254-268. Mediolanum Billon Antoninianus 22 mm, 2,91 g Very Fine

**1**



**661** Salonina AD 254-268. Rome Antoninianus Æ 19 mm, 2,20 g Very Fine

**1**



**662** Salonina AD 254-268. Samosata Billon Antoninianus 24 mm, 3,53 g Nearly Very Fine

**1**



**663** Salonina AD 254-268. Samosata or Antioch Billon Antoninianus 23 mm, 3,61 g Nearly Very Fine

**1**



**664** Valerian II, Caesar AD 256-257. Viminacium Antoninianus AR 21 mm, 3,95 g Very Fine

**1**





**665** Saloninus, as Caesar AD 258-260. Antioch Billon Antoninianus 21 mm, 3,18 g Very Fine

**1**



**666** Macrianus Usurper AD 260-261. Samosata Billon Antoninianus 23 mm, 3,39 g Very Fine

**1**



**667** Postumus, Usurper in Gaul AD 260-269. Treveri Antoninianus AR 24 mm, 2,23 g Nearly Very Fine

**1**



**668** Aurelian AD 270-275. Antioch Antoninianus Æ silvered 23 mm, 3,84 g Very Fine

**1**



**669** Aurelian AD 270-275. Siscia Antoninianus Æ silvered 22 mm, 4,39 g Extremely Fine

**1**



**670** Aurelian AD 270-275. Ticinum Antoninianus Æ 23 mm, 3,77 g Very Fine

**1**



**671** Aurelian and Vabalathus AD 270-275. Antioch Antoninianus Æ 21 mm, 3,34 g Very Fine

**1**



**672** Aurelian and Vabalathus AD 270-275. Antioch Antoninianus Æ 20 mm, 4,42 g Nearly Very Fine

**1**



**673** Severina AD 270-275. Rome Antoninianus Æ 23 mm, 4,02 g Very Fine

**1**



**674** Tetricus I AD 271-274. Contemporary barbaric imitation Antoninianus Æ 19 mm, 2,76 g Good Fine

**1**



**675** Tacitus AD 275-276. Siscia Antoninianus Æ 22 mm, 3,34 g Very Fine

**1**



**676** Probus AD 276-282. Antioch Antoninianus Æ 21 mm, 3,58 g Very Fine

**1**



**677** Probus AD 276-282. Antioch Antoninianus Æ 21 mm, 4,26 g Good Fine

**1**



**678** Probus AD 276-282. Antioch Antoninianus Æ silvered 22 mm, 3,77 g Extremely Fine

**1**



**679** Probus AD 276-282. Rome Antoninianus Æ 23 mm, 4,29 g  
Very Fine

**1**



**680** Probus AD 276-282. Siscia Billon Antoninianus 22 mm, 3,68 g  
Very Fine

**1**



**681** Probus AD 276-282. Siscia Antoninianus Æ 23 mm, 3,60 g  
Very Fine

**1**



**682** Probus AD 276-282. Ticinum Antoninianus Æ 23 mm, 3,37 g  
Good Fine

**1**



**683** Diocletian AD 284-305. Heraclea Radiatus Æ 20 mm, 1,94 g  
Very Fine

**1**



**684** Diocletian AD 284-305. Heraclea Radiatus Æ 21 mm, 3,64 g  
Nearly Very Fine

**1**



**685** Diocletian AD 284-305. Tripolis Antoninianus Æ 22 mm, 3,67 g  
Very Fine

**1**



**686** Maximianus Herculeus AD 286-305. Alexandria Follis Æ 25 mm, 9,45 g Very Fine

**1**



**687** Maximianus Herculeus AD 286-305. Antioch Antoninianus Æ 22 mm, 3,87 g Nearly Very Fine

**1**



**688** Maximianus Herculeus AD 286-305. Heraclea Antoninianus Æ silvered 23 mm, 3,83 g Very Fine

**1**



**689** Constantius I Chlorus, as Caesar AD 293-305. Antioch Follis Æ 20 mm, 2,86 g Nearly Very Fine

**1**



**690** Constantius I Chlorus, as Caesar AD 293-305. Rome (?) Gold plated Follis 16 mm, 1,51 g Fine

**1**



**691** Constantius I Chlorus, as Caesar AD 293-305. Treveri Follis Æ 28 mm, 11,82 g Very Fine

**1**



**692** Galerius Maximianus, as Caesar AD 293-305. Alexandria Radiatus Æ 22 mm, 2,71 g Very Fine

**1**



**693** Galerius Maximianus, as Caesar AD 293-305. Antioch Antoninianus Æ 21 mm, 2,81 g Very Fine

**1**



**694** Galerius Maximianus, as Caesar AD 293-305. Cyzicus Radiatus Æ 20 mm, 2,86 g Very Fine

**1**



**695** Constantine I the Great AD 306-337. Alexandria Follis Æ 20 mm, 3,37 g Nearly Extremely Fine

**1**



**696** Constantine I the Great AD 306-337. Antioch Follis Æ 20 mm, 3,43 g Good Very Fine

**1**



**697** Constantine I the Great AD 306-337. Antioch Follis Æ 15 mm, 1,45 g Very Fine

**1**



**698** Constantine I the Great AD 306-337. Antioch Follis Æ 18 mm, 2,51 g Very Fine

**1**



**699** Constantine I the Great AD 306-337. Antioch Follis Æ 17 mm, 2,86 g Very Fine

**1**



**700** Constantine I the Great AD 306-337. Arelate (Arles) Follis Æ  
18 mm, 2,52 g Very Fine

**1**



**701** Constantine I the Great AD 306-337. Arelate (Arles) Follis Æ  
20 mm, 3,15 g Nearly Extremely Fine

**1**



**702** Constantine I the Great AD 306-337. Arelate (Arles) Follis Æ  
20 mm, 3,15 g Nearly Extremely Fine

**1**



**703** Constantine I the Great AD 306-337. Constantinople Follis Æ  
18 mm, 1,70 g Nearly Very Fine

**1**



**704** Constantine I the Great AD 306-337. Cyzicus Follis Æ 19  
mm, 3,35 g Nearly Very Fine

**1**



**705** Constantine I the Great AD 306-337. Cyzicus Follis Æ 19  
mm, 3,30 g Very Fine

**1**



**706** Constantine I the Great AD 306-337. Cyzicus Follis Æ 21  
mm, 3,53 g Very Fine

**1**



**707** Constantine I the Great AD 306-337. Heraclea Follis Æ 21 mm, 3,04 g Very Fine

**1**



**708** Constantine I the Great AD 306-337. Lugdunum Follis Æ 19 mm, 3,10 g Good Fine

**1**



**709** Constantine I the Great AD 306-337. Nicomedia Follis Æ 16 mm, 1,66 g Nearly Extremely Fine

**1**



**710** Constantine I the Great AD 306-337. Nicomedia Follis Æ 18 mm, 3,52 g Very Fine

**1**



**711** Constantine I the Great AD 306-337. Rome Follis Æ 20 mm, 3,16 g Nearly Extremely Fine

**1**



**712** Constantine I the Great AD 306-337. Rome Follis Æ 19 mm, 2,46 g Very Fine

**1**



**713** Constantine I the Great AD 306-337. Rome Follis Æ 20 mm, 3,36 g Very Fine

**1**



**714** Constantine I the Great AD 306-337. Rome Follis Æ 19 mm,  
3,35 g Very Fine

**1**



**715** Constantine I the Great AD 306-337. Rome Follis Æ 20 mm,  
3,99 g Very Fine

**1**



**716** Constantine I the Great AD 306-337. Rome Follis Æ 21 mm,  
3,26 g Very Fine

**1**



**717** Constantine I the Great AD 306-337. Rome Follis Æ 21 mm,  
3,51 g Very Fine

**1**



**718** Constantine I the Great AD 306-337. Rome Follis Æ 20 mm,  
2,36 g Very Fine

**1**



**719** Constantine I the Great AD 306-337. Rome Follis Æ 20 mm,  
3,40 g Very Fine

**1**



**720** Constantine I the Great AD 306-337. Rome Follis Æ 21 mm,  
3,37 g Very Fine

**1**





**721** Constantine I the Great AD 306-337. Siscia Follis Æ 19 mm, 2,31 g Very Fine

**1**



**722** Constantine I the Great AD 306-337. Siscia Follis Æ 18 mm, 3,19 g Nearly Extremely Fine

**1**



**723** Constantine I the Great AD 306-337. Siscia Follis Æ 20 mm, 2,86 g Very Fine

**1**



**724** Constantine I the Great AD 306-337. Thessaloniki Follis Æ 20 mm, 2,84 g Very Fine

**1**



**725** Constantine I the Great AD 306-337. Ticinum Follis Æ 20 mm, 3,64 g Very Fine

**1**



**726** Constantine I the Great AD 306-337. Ticinum Follis Æ 19 mm, 2,66 g Very Fine

**1**



**727** Constantine I the Great AD 306-337. Treveri Follis Æ 20 mm, 3,66 g Very Fine

**1**



**728** Constantine I the Great AD 306-337. Treveri Follis Æ 18 mm, 2,92 g Very Fine

**1**



**729** Constantine I the Great AD 306-337. Treveri Follis Æ 19 mm, 2,55 g Very Fine

**1**



**730** Constantine I the Great AD 306-337. Uncertain mint, probably Arelate (Arles) Follis Æ 21 mm, 3,06 g Nearly Very Fine

**1**



**731** Licinius I AD 308-324. Alexandria Follis Æ 22 mm, 3,73 g Very Fine

**1**



**732** Licinius I AD 308-324. Alexandria Follis Æ 19 mm, 3,37 g Very Fine

**1**



**733** Licinius I AD 308-324. Antioch Follis Æ 19 mm, 3,21 g Very Fine

**1**



**734** Licinius I AD 308-324. Antioch Follis Æ 20 mm, 3,19 g Very Fine

**1**



**735** Licinius I AD 308-324. Antioch Follis Æ 20 mm, 2,89 g Very Fine

**1**



**736** Licinius I AD 308-324. Cyzicus Follis Æ 25 mm, 3,11 g Very Fine

**1**



**737** Licinius I AD 308-324. Cyzicus Follis Æ 20 mm, 3,02 g Good Fine

**1**



**738** Licinius I AD 308-324. Heraclea Follis Æ 20 mm, 2,75 g Very Fine

**1**



**739** Licinius I AD 308-324. Heraclea Follis Æ 23 mm, 3,32 g Nearly Very Fine

**1**



**740** Licinius I AD 308-324. Heraclea Follis Æ 20 mm, 3,31 g Very Fine

**1**



**741** Licinius I AD 308-324. Rome Follis Æ 20 mm, 3,04 g Nearly Very Fine

**1**



**742** Licinius I AD 308-324. Rome Follis Æ 22 mm, 4,33 g Nearly Very Fine

**1**



**743** Licinius I AD 308-324. Rome Follis Æ 20 mm, 3,01 g Very Fine

**1**



**744** Licinius I AD 308-324. Rome Follis Æ 21 mm, 4,49 g Very Fine

**1**



**745** Licinius I AD 308-324. Thessaloniki Follis Æ 26 mm, 4,83 g Very Fine

**1**



**746** Divus Romulus AD 309-312. Ostia Follis Æ 25 mm, 6,29 g Very Fine

**1**



**747** Divus Maximianus Herculius AD 310. Rome Follis Æ 15 mm, 1,98 g Fine

**1**



**748** Maximinus II Daia AD 310-313. Rome Follis Æ 22 mm, 4,19 g Very Fine

**1**



**749** Crispus, as Caesar AD 316-326. Alexandria Follis Æ 19 mm, 2,88 g Very Fine

**1**



**750** Crispus, as Caesar AD 316-326. Aquileia Follis Æ 19 mm, 2,96 g Very Fine

**1**



**751** Crispus, as Caesar AD 316-326. Arelate (Arles) Follis Æ 19 mm, 3,35 g Very Fine

**1**



**752** Crispus, as Caesar AD 316-326. Heraclea Follis Æ 18 mm, 3,01 g Very Fine

**1**



**753** Crispus, as Caesar AD 316-326. Nicomedia Follis Æ 18 mm, 2,95 g Good Very Fine

**1**



**754** Crispus, as Caesar AD 316-326. Rome Follis Æ 20 mm, 3,25 g Very Fine

**1**



**755** Crispus, as Caesar AD 316-326. Rome Follis Æ 19 mm, 3,00 g Very Fine

**1**



**756** Crispus, as Caesar AD 316-326. Siscia Follis Æ 19 mm, 2,90 g Very Fine

**1**



**757** Crispus, as Caesar AD 316-326. Ticinum Follis Æ 22 mm, 2,18 g Fine

**1**



**758** Constantine II, as Caesar AD 317-337. Antioch Follis Æ 20 mm, 3,59 g Very Fine

**1**



**759** Constantine II, as Caesar AD 317-337. Antioch Follis Æ 20 mm, 3,22 g Very Fine

**1**



**760** Constantine II, as Caesar AD 317-337. Antioch Follis Æ 19 mm, 2,21 g Very Fine

**1**



**761** Constantine II, as Caesar AD 317-337. Antioch Follis Æ 17 mm, 2,36 g Very Fine

**1**



**762** Constantine II, as Caesar AD 317-337. Arelate (Arles) Follis Æ 20 mm, 3,50 g Very Fine

**1**



**763** Constantine II, as Caesar AD 317-337. Arelate (Arles) Follis  
Æ 20 mm, 3,30 g Very Fine

**1**



**764** Constantine II, as Caesar AD 317-337. Cyzicus Follis Æ 20  
mm, 2,91 g Very Fine

**1**



**765** Constantine II, as Caesar AD 317-337. Cyzicus Follis Æ 18  
mm, 2,61 g Very Fine

**1**



**766** Constantine II, as Caesar AD 317-337. Heraclea Follis Æ 20  
mm, 2,98 g Very Fine

**1**



**767** Constantine II, as Caesar AD 317-337. Heraclea Follis Æ 19  
mm, 2,89 g Very Fine

**1**



**768** Constantine II, as Caesar AD 317-337. Rome Follis Æ 20  
mm, 3,70 g Very Fine

**1**



**769** Constantine II, as Caesar AD 317-337. Ticinum Follis Æ 20  
mm, 3,32 g Very Fine

**1**



**770** Licinius II, as Caesar AD 317-324. Cyzicus Follis Æ 20 mm, 3,44 g Very Fine

**1**



**771** Licinius II, as Caesar AD 317-324. Nicomedia Follis Æ 19 mm, 2,92 g Good Fine

**1**



**772** Fausta AD 324-326. Thessaloniki Follis Æ 20 mm, 3,31 g Very Fine

**1**



**773** City Commemoratives AD 330-354. Antioch Follis Æ 17 mm, 2,89 g Very Fine

**1**



**774** City Commemoratives AD 330-354. Antioch Follis Æ 17 mm, 2,31 g Very Fine

**1**



**775** City Commemoratives AD 330-354. Constantinople Follis Æ 18 mm, 2,38 g Very Fine

**1**



**776** City Commemoratives AD 330-354. Constantinople Follis Æ 16 mm, 1,39 g Very Fine

**1**





**777** City Commemoratives AD 330-354. Cyzicus Follis Æ 18 mm, 2,18 g Nearly Very Fine

**1**



**778** City Commemoratives AD 330-354. Heraclea Follis Æ 18 mm, 2,04 g Very Fine

**1**



**779** City Commemoratives AD 330-354. Nicomedia Follis Æ 18 mm, 2,32 g Very Fine

**1**



**780** City Commemoratives AD 330-354. Thessaloniki Follis Æ 19 mm, 2,37 g Fine

**1**



**781** City Commemoratives AD 330-354. Thessaloniki Follis Æ 16 mm, 1,23 g Very Fine

**1**



**782** City Commemoratives AD 330-354. Thessaloniki Follis Æ 17 mm, 1,64 g Very Fine

**1**



**783** City Commemoratives AD 330-354. Treveri Follis Æ 17 mm, 2,90 g Very Fine

**1**



**784** Constans, as Caesar AD 333-337. Antioch Follis Æ 16 mm, 1,99 g Nearly Extremely Fine

**1**



**785** Constans AD 337-350. Alexandria Follis Æ 15 mm, 1,65 g Very Fine

**1**



**786** Constans AD 337-350. Antioch Follis Æ 15 mm, 2,20 g Nearly Very Fine

**1**



**787** Constans AD 337-350. Antioch Follis Æ 15 mm, 1,92 g Nearly Very Fine

**1**



**788** Constans AD 337-350. Brockage Follis Æ 15 mm, 1,43 g Fine

**1**



**789** Constans AD 337-350. Heraclea Follis Æ 16 mm, 1,70 g Very Fine

**1**



**790** Constans AD 337-350. Rome Follis Æ 14 mm, 1,51 g Very Fine

**1**



**791** Constans AD 337-350. Siscia Follis Æ 16 mm, 1,48 g Very Fine

**1**



**792** Constantius II, as Caesar AD 337-347. Alexandria Follis Æ 20 mm, 2,79 g Very Fine

**1**



**793** Constantius II, as Caesar AD 337-347. Alexandria Follis Æ 18 mm, 2,47 g Very Fine

**1**



**794** Constantius II, as Caesar AD 337-347. Antioch Follis Æ 20 mm, 3,34 g Very Fine

**1**



**795** Constantius II, as Caesar AD 337-347. Antioch Follis Æ 19 mm, 2,05 g Nearly Very Fine

**1**



**796** Constantius II, as Caesar AD 337-347. Cyzicus Follis Æ 20 mm, 2,59 g Very Fine

**1**



**797** Constantius II, as Caesar AD 337-347. Heraclea Follis Æ 19 mm, 2,47 g Very Fine

**1**



**798** Constantius II, as Caesar AD 337-347. Londinium Follis Æ  
19 mm, 2,19 g Nearly Very Fine

**1**



**799** Constantius II, as Caesar AD 337-347. Nicomedia Follis Æ  
20 mm, 2,83 g Very Fine

**1**



**800** Divus Constantine I AD 337. Alexandria Follis Æ 15 mm,  
1,38 g Very Fine

**1**



**801** Divus Constantine I AD 337. Alexandria Follis Æ 15 mm,  
1,55 g Nearly Very Fine

**1**



**802** Divus Constantine I AD 337. Antioch Follis Æ 16 mm, 1,35 g  
Very Fine

**1**



**803** Divus Constantine I AD 337. Antioch Follis Æ 14 mm, 1,14 g  
Good Fine

**1**



**804** Divus Constantine I AD 337. Antioch Follis Æ 15 mm, 1,81 g  
Nearly Very Fine

**1**



**805** Divus Constantine I AD 337. Antioch Follis Æ 15 mm, 1,62 g  
Nearly Very Fine

**1**



**806** Theodora (second wife of Constantius I) AD 337-340.  
Constantinople Follis Æ 16 mm, 1,44 g Very Fine

**1**



**807** Constantius II AD 347-361. Antioch Follis Æ 15 mm, 2,13 g  
Very Fine

**1**



**808** Constantius II AD 347-361. Cyzicus Follis Æ 17 mm, 2,85 g  
Very Fine

**1**



**809** Constantius II AD 347-361. Heraclea Follis Æ 18 mm, 3,25 g  
Fine

**1**



**810** Constantius II AD 347-361. Heraclea Follis Æ 19 mm, 2,35 g  
Nearly Very Fine

**1**



**811** Constantius II AD 347-361. Nicomedia Follis Æ 15 mm, 2,49  
g Very Fine

**1**



**812** Constantius II AD 347-361. Nicomedia Follis Æ 17 mm, 2,56 g Very Fine

**1**



**813** Constantius II AD 347-361. Rome Follis Æ 17 mm, 2,45 g Very Fine

**1**



**814** Constantius II AD 347-361. Siscia Follis Æ 16 mm, 1,81 g Very Fine

**1**



**815** Constantius II AD 347-361. Uncertain mint Follis Æ 15 mm, 1,81 g Very Fine

**1**



**816** Constantius Gallus, Caesar AD 351-354. Alexandria Follis Æ 17 mm, 2,97 g Very Fine

**1**



**817** Constantius Gallus, Caesar AD 351-354. Constantinople Follis Æ 19 mm, 3,03 g Very Fine

**1**



**818** Constantius Gallus, Caesar AD 351-354. Uncertain mint Follis Æ 17 mm, 2,80 g Very Fine

**1**



**819** Julian II Apostate AD 360-363. Alexandria Follis Æ 18 mm, 3,88 g Very Fine

**1**



**820** Julian II Apostate AD 360-363. Alexandria Follis Æ 19 mm, 3,50 g Nearly Very Fine

**1**



**821** Julian II Apostate AD 360-363. Sirmium Follis Æ 20 mm, 2,71 g Nearly Very Fine

**1**



**822** Julian II Apostate AD 360-363. Siscia Double Maiorina Æ 29 mm, 6,61 g Fine

**1**



**823** Jovian AD 363-364. Heraclea Follis Æ 19 mm, 2,38 g Nearly Very Fine

**1**



**824** Valens AD 364-378. Sirmium Follis Æ 19 mm, 2,51 g Very Fine

**1**



**825** Valens AD 364-378. Thessaloniki Follis Æ 17 mm, 2,58 g Very Fine

**1**



**826** Valens AD 364-378. Thessaloniki Follis Æ 17 mm, 1,95 g  
Very Fine

**1**



**827** Procopius AD 365-366. Heraclea Follis Æ 18 mm, 2,56 g  
Fine

**1**



**828** Procopius AD 365-366. Heraclea Follis Æ 17 mm, 1,74 g  
Fine

**1**



**829** Procopius AD 365-366. Uncertain mint Follis Æ 18 mm, 1,85  
g Good Fine

**1**



**830** Gratian AD 375-383. Antioch Follis Æ 19 mm, 2,48 g Very  
Fine

**1**



**831** Gratian AD 375-383. Antioch Follis Æ 22 mm, 5,18 g Very  
Fine

**1**



**832** Gratian AD 375-383. Antioch Follis Æ 13 mm, 1,54 g Very  
Fine

**1**





**833** Gratian AD 375-383. Constantinople Follis Æ 22 mm, 4,18 g  
Nearly Very Fine

**1**



**834** Gratian AD 375-383. Siscia Follis Æ 17 mm, 2,39 g Very  
Fine

**1**



**835** Valentinian II AD 375-392. Alexandria Follis Æ 22 mm, 5,77  
g Very Fine

**1**



**836** Valentinian II AD 375-392. Antioch Follis Æ 17 mm, 2,28 g  
Very Fine

**1**



**837** Valentinian II AD 375-392. Antioch Follis Æ 24 mm, 5,10 g  
Very Fine

**1**



**838** Valentinian II AD 375-392. Antioch Follis Æ 25 mm, 5,75 g  
Nearly Very Fine

**1**



**839** Valentinian II AD 375-392. Constantinople Follis Æ 20 mm,  
2,36 g Very Fine

**1**



**840** Valentinian II AD 375-392. Cyzicus Follis Æ 25 mm, 5,1 g  
Very Fine

**1**



**841** Theodosius I AD 379-395. Alexandria Follis Æ 23 mm, 5,03 g  
Very Fine

**1**



**842** Theodosius I AD 379-395. Alexandria Follis Æ 22 mm, 4,54 g  
Very Fine

**1**



**843** Theodosius I AD 379-395. Antioch Follis Æ 22 mm, 5,62 g  
Very Fine

**1**



**844** Theodosius I AD 379-395. Antioch Follis Æ 19 mm, 2,68 g  
Very Fine

**1**



**845** Theodosius I AD 379-395. Antioch Follis Æ 25 mm, 4,34 g  
Very Fine

**1**



**846** Theodosius I AD 379-395. Antioch Follis Æ 23 mm, 5,91 g  
Very Fine

**1**



**847** Theodosius I AD 379-395. Constantinople Follis Æ 22 mm, 5,58 g Very Fine

**1**



**848** Theodosius I AD 379-395. Constantinople Follis Æ 25 mm, 5,08 g Very Fine

**1**



**849** Theodosius I AD 379-395. Constantinople Follis Æ 13 mm, 1,32 g Very Fine

**1**



**850** Theodosius I AD 379-395. Constantinople Follis Æ 22 mm, 5,42 g Very Fine

**1**



**851** Theodosius I AD 379-395. Cyzicus Follis Æ 19 mm, 1,82 g Very Fine

**1**



**852** Theodosius I AD 379-395. Cyzicus Follis Æ 14 mm, 0,83 g Good Fine

**1**



**853** Theodosius I AD 379-395. Heraclea Follis Æ 14 mm, 1,26 g Very Fine

**1**



**854** Theodosius I AD 379-395. Siscia Follis Æ 14 mm, 1,01 g  
Very Fine

**1**



**855** Theodosius I AD 379-395. Thessaloniki Follis Æ 23 mm, 5,30 g  
Very Fine

**1**



**856** Theodosius I AD 379-395. Thessaloniki Follis Æ 22 mm, 5,52 g  
Very Fine

**1**



**857** Aelia Flacilla AD 383-386. Antioch Follis Æ 21 mm, 4,04 g  
Very Fine

**1**



**858** Arcadius AD 383-408. Alexandria Follis Æ 22 mm, 4,31 g  
Very Fine

**1**



**859** Arcadius AD 383-408. Alexandria Follis Æ 22 mm, 4,67 g  
Very Fine

**1**



**860** Arcadius AD 383-408. Antioch Follis Æ 13 mm, 1,83 g  
Nearly Very Fine

**1**



**861** Arcadius AD 383-408. Constantinople Follis Æ 23 mm, 6,76 g Very Fine

**1**



**862** Arcadius AD 383-408. Constantinople Follis Æ 24 mm, 4,07 g Very Fine

**1**



**863** Arcadius AD 383-408. Constantinople Follis Æ 22 mm, 4,74 g Nearly Very Fine

**1**



**864** Arcadius AD 383-408. Nicomedia Follis Æ 22 mm, 5,66 g Very Fine

**1**



**865** Arcadius AD 383-408. Uncertain mint Follis Æ 13 mm, 1,12 g Good Fine

**1**



**866** Magnus Maximus AD 383-388. Constantinople Follis Æ 23 mm, 4,15 g Good Fine

**1**



**867** Honorius AD 393-423. Contemporary barbaric imitation Follis Æ 15 mm, 1,37 g Fine

**1**



**868** Johannes AD 423-425. Uncertain mint Nummus Æ 11 mm,  
1,10 g Fine

**1**



**869** Marcian AD 450-457. Constantinople Nummus Æ 10 mm,  
1,33 g Fine

**1**



**870** Anastasius I AD 491-518. Constantinople Follis or 40 Nummi  
Æ 24 mm, 8,83 g Fine

**1**



**871** Anastasius I AD 491-518. Constantinople Tremissis AV 16  
mm, 1,47 g Fine

**1**



**872** Anastasius I AD 491-518. Uncertain mint Nummus Æ 8 mm,  
0,73 g Very Fine

**1**



**873** Justin I AD 518-527. Alexandria 12 Nummi Æ 18 mm, 4,19 g  
Fine

**1**



**874** Justin I AD 518-527. Antioch Follis or 40 Nummi Æ 33 mm,  
16,00 g Good Fine

**1**



**875** Justin II AD 565-578. Alexandria 12 Nummi Æ 15 mm, 3,21 g Very Fine

**1**



**876** Maurice Tiberius AD 582-602. Constantinople Follis or 40 Nummi Æ 30 mm, 12,00 g Very Fine

**1**



**877** Alexius I Comnenus AD 1081-1118. Philippopolis Aspron Trachy BI 25 mm, 3,95 g Good Fine

**1**



**878** Manuel I Comnenus AD 1143-1180. Constantinople Trachy Æ 29 mm, 4,12 g Very Fine

**1**



**879** Manuel I Comnenus AD 1143-1180. Constantinople Trachy Æ 30 mm, 5,38 g Nearly Very Fine

**1**



**880** Manuel I Comnenus AD 1143-1180. Constantinople Trachy Æ 30 mm, 2,45 g Good Fine

**1**



**881** Andronicus I Comnenus AD 1183-1185. Constantinople Trachy Æ 27 mm, 4,03 g Very Fine

**1**



**882** Isaac II Angelos AD 1185-1195. Constantinople Trachy Æ 29 mm, 3,38 g Very Fine

**1**



**883** Isaac II Angelos AD 1185-1195. Constantinople Trachy Æ 27 mm, 2,89 g Very Fine

**1**



**884** Alexius III Angelus-Comnenus AD 1195-1203. Constantinople Trachy Æ 26 mm, 2,16 g Very Fine

**1**



**885** Alexius III Angelus-Comnenus AD 1195-1203. Constantinople Trachy Æ 28 mm, 2,62 g Very Fine

**1**



**886** Alexius III Angelus-Comnenus AD 1195-1203. Constantinople Trachy Æ 25 mm, 3,15 g Nearly Very Fine

**1**



**887** Latin Rulers of Constantinople AD 1204-1261. Constantinople Trachy Æ 26 mm, 2,77 g Fine

**1**



**888** Latin Rulers of Constantinople AD 1204-1261. Constantinople Trachy Æ 30 mm, 5,04 g Very Fine

**1**





**889** Latin Rulers of Constantinople AD 1204-1261.  
Constantinople Trachy Æ 20 mm, 1,28 g Very Fine

**1**



**890** Latin Rulers of Constantinople AD 1204-1261.  
Constantinople Trachy Æ 21 mm, 1,39 g Very Fine

**1**



**891** Latin Rulers of Constantinople AD 1204-1261.  
Constantinople Trachy Æ 20 mm, 0,84 g Very Fine

**1**



**892** Latin Rulers of Constantinople AD 1204-1261.  
Constantinople Trachy Æ 21 mm, 0,83 g Good Fine

**1**



**893** Empire of Nicaea. John III Ducas (Vatatzes) AD 1222-1254.  
Thessalonica Trachy Æ 30 mm, 4,14 g Very Fine

**1**



**894** Michael VIII Palaeologus AD 1261-1282. Constantinople  
Trachy Æ 25 mm, 1,57 g Nearly Very Fine

**1**



**895** Michael VIII Palaeologus AD 1261-1282. Constantinople  
Trachy Æ 26 mm, 1,87 g Very Fine

**1**



**896** Michael VIII Palaeologus AD 1261-1282. Thessalonica Trachy Æ 26 mm, 1,83 g Good Fine

**1**



**897** Andronicus II Palaeologus AD 1282-1328. Constantinople Trachy Æ 21 mm, 1,99 g Fine

**1**



**898** Andronicus II Palaeologus, with Michael IX AD 1282-1328. Constantinople Basilikon AR 22 mm, 2,07 g Very Fine

**1**



**899** Andronicus II Palaeologus, with Michael IX AD 1282-1328. Constantinople Basilikon AR 22 mm, 2,10 g Nearly Very Fine

**1**



**900** John VIII Palaeologus AD 1425-1448. Thessalonica Trachy Æ 25 mm, 1,19 g Fine

**1**



**901** Italy. Brindisi. Conrad I AD 1250-1254. Half Denaro BI 17 mm, 0,73 g Very Fine, holed

**1**



**902** Italy. Venezia (Venice). Ranieri Zeno AD 1253-1268. Grosso AR 21 mm, 2,11 g Very Fine

**1**



**903** Italy. Venezia (Venice). Lorenzo Tiepolo AD 1268-1275.  
Grosso AR 20 mm, 2,13 g Very Fine

**1**



**904** Italy. Venezia (Venice). Giovanni Dandolo AD 1280-1289.  
Grosso AR 20 mm, 2,14 g Very Fine

**1**



**905** Serbia. Stefan Uroš II Milutin AD 1282-1321. Dinar AR 20  
mm, 2,07 g Very Fine

**1**



**906** Principality of Antioch. Antioch. Tancred. As regent AD  
1104-1112. Follis Æ 21 mm, 3,01 g Good Fine

**1**



**907** Principality of Antioch. Antioch. Tancred. As regent AD  
1104-1112. Follis Æ 23 mm, 2,72 g Fine

**1**



**908** Cilician Armenia. Levon III AD 1301-1307. Takvorin AR 20  
mm, 2,27 g Fine

**1**



**909** Umayyad. al-Samiya mint. Marwan II Dirham AR. AH 127-  
132. Struck AH 131 25 mm, 2,75 g Very Fine

**1**



**910** Abbasid. Ifriqiya mint. Al-Rashid AH170-193. Dirham AR.  
Struck AH 173 26 mm, 2,24 g Very Fine

**1**



**911** Abbasid. Arran mint. Al-Rashid AH170-193. Dirham AR.  
Struck AH 186 25 mm, 2,74 g Very Fine

**1**



**912** Abbasid. Madinat Zaranj mint. Al-Rashid AH 170-193.  
Dirham AR. Struck AH 181 27 mm, 2,84 g Very Fine

**1**



**913** Abbasid. al-Basra mint. Al-Muktafi AH 289-295. Dirham AR.  
Struck AH 292 26 mm, 3,09 g Very Fine

**1**



**914** Umayyad. . Fals Æ 19 mm, 4,97 g Very Fine

**1**



**915** Umayyad. . Fals Æ 20 mm, 8,34 g Very Fine

**1**



**916** Abbasid . . Fals Æ 20 mm, 3,27 g Very Fine

**1**



**917** Umayyad. . Fals Æ 23 mm, 4,38 g Very Fine

**1**



**918** Umayyad. . Fals Æ 16 mm, 2,03 g Very Fine

**1**



**919** Umayyad. . Fals Æ 15 mm, 2,69 g Very Fine

**1**



**920** Umayyad. . Fals Æ 17 mm, 1,65 g Very Fine

**1**



**921** Umayyad. . Fals Æ 20 mm, 2,31 g Very Fine

**1**



**922** Abbasid . . Fals Æ 20 mm, 4,19 g Very Fine

**1**



**923** Umayyad. . Fals Æ 20 mm, 3,14 g Very Fine

**1**



**924** Umayyad. . Fals Æ 15 mm, 3,12 g Very Fine

**1**



**925** Umayyad. . Fals Æ 17 mm, 2,00 g Nearly Very Fine

**1**



**926** Umayyad. . Fals Æ 16 mm, 2,15 g Very Fine

**1**



**927** Umayyad. . Fals Æ 18 mm, 1,38 g Very Fine

**1**



**928** Umayyad. Abd al-Malik AH 65-86. Fals Æ 22 mm, 4,10 g Very Fine

**1**



**929** Umayyad. Abd al-Malik AH 65-86. Fals Æ 19 mm, 1,93 g Fine

**1**



**930** Umayyad. Hims mint. Abd al-Malik AH 65-86. Fals Æ 21 mm, 4,96 g Very Fine

**1**



**931** Umayyad. Hims mint. Abd al-Malik AH 65-86. Fals Æ 22 mm, 3,92 g Very Fine

**1**



**932** Umayyad. Hims mint. Abd al-Malik AH 65-86. Fals Æ 20 mm, 4,23 g Very Fine

**1**



**933** Umayyad. Hims mint. Abd al-Malik AH 65-86. Fals Æ 20 mm, 4,70 g Very Fine

**1**



**934** Umayyad. Hims mint. Abd al-Malik AH 65-86. Fals Æ 20 mm, 3,77 g Very Fine

**1**



**935** Abbasid . al-Basra mint. Al-Saffah AH 132-136. Struck AH 135 AR Dirham 26 mm, 2,76 g Good Very Fine

**1**



**936** Abbasid . al-Basra mint. al-Mansur AH 136-158. Struck AH 147 AR Dirham 23 mm, 2,74 g Good Very Fine

**1**



**937** Abbasid . al-Muhammadiya mint. al-Mansur AH 136-158. Struck AH 147 AR Dirham 26 mm, 1,85 g Good Very Fine

**1**



**938** Abbasid . Madinat al-Salam mint. al-Mansur AH 136-158.  
Struck AH 154 AR Dirham 26 mm, 2,82 g Good Very Fine

**1**



**939** Abbasid . Madinat al-Salam mint. al-Mansur AH 136-158.  
Struck AH 158 AR Dirham 25 mm, 2,92 g Good Very Fine

**1**



**940** Abbasid . al-Muhammadiya mint. al-Mahdi AH 158-169.  
Struck AH 167 AR Dirham 24 mm, 2,65 g Good Very Fine

**1**



**941** Abbasid . Madinat al-Salam mint. al-Mahdi AH 158-169.  
Struck AH 163 AR Dirham 24 mm, 2,77 g Good Very Fine

**1**



**942** Abbasid . Madinat al-Salam mint. al-Mahdi AH 158-169.  
Struck AH 163 AR Dirham 24 mm, 2,77 g Good Very Fine

**1**



**943** Abbasid . al-Muhammadiya mint. al-Rashid AH 170-193.  
Struck AH 181 AR Dirham 26 mm, 2,93 g Good Very Fine

**1**



**944** Abbasid . al-Muhammadiya mint. al-Rashid AH 170-193.  
Struck AH 183 , with Jafar AR Dirham 25 mm, 2,81 g Good Very Fine

**1**





**945** Abbasid . al-Muhammadiya mint. al-Rashid AH 170-193.  
Struck AH 192 AR Dirham 22 mm, 2,90 g Nearly Extremely Fine

**1**



**946** Abbasid . Ma'din al-Shash mint. al-Rashid AH 170-193.  
Struck AH 190 , with Ali AR Dirham 26 mm, 2,82 g Good Very Fine

**1**



**947** Abbasid . Madinat al-Salam mint. al-Rashid AH 170-193.  
Struck AH 191 AR Dirham 22 mm, 2,68 g Good Very Fine

**1**



**948** Abbasid . Madinat al-Salam mint. al-Rashid AH 170-193.  
Struck AH 187 AR Dirham 25 mm, 2,88 g Good Very Fine

**1**



**949** Abbasid . Madinat al-Salam mint. al-Rashid AH 170-193.  
Struck AH 186 , with Jafar AR Dirham 23 mm, 2,89 g Good Very Fine

**1**



**950** Abbasid . Madinat al-Salam mint. al-Rashid AH 170-193.  
Struck AH 190 AR Dirham 21 mm, 2,91 g Good Very Fine

**1**



**951** Abbasid . Madinat al-Salam mint. al-Rashid AH 170-193.  
Struck AH 189 AR Dirham 25 mm, 2,92 g Good Very Fine

**1**



**952** Abbasid . Madinat al-Salam mint. al-Rashid AH 170-193.  
Struck AH 191 AR Dirham 22 mm, 2,52 g Good Very Fine

**1**



**953** Abbasid . Madinat Zaranj mint. al-Rashid AH 170-193.  
Struck AH 180 , with Jafar AR Dirham 25 mm, 2,73 g Good Very  
Fine

**1**



**954** Abbasid . Madinat al-Salam mint. Al Amin AH 193-198.  
Struck AH 196 , with My Lord ALLAH , Al-Abbas AR Dirham 24  
mm, 2,92 g Nearly Extremely Fine

**1**



**955** Abbasid . Madinat al-Salam mint. Al Amin AH 193-198.  
Struck AH 194 AR Dirham 22 mm, 2,90 g Good Very Fine

**1**



**956** Abbasid . Surra Man Ra'a mint. Al Mut'tazz AH 251-255.  
Struck AH 251 AR Dirham 20 mm, 2,60 g Good Very Fine

**1**



**957** Abbasid . Madinat al-Salam mint. al-Mu'tamid AH 256-279.  
Struck AH 261 AR Dirham 23 mm, 2,80 g Good Very Fine

**1**



**958** Abbasid . Al-Ahwaz Mint . al-Muktafi AH 289-295. Struck AH  
294 AR Dirham 23 mm, 3,22 g Good Very Fine

**1**



**959** Abbasid . Madinat al-Salam mint. al-Muktafi AH 289-295.  
Struck AH 291 AR Dirham 25 mm, 2,80 g Good Very Fine

**1**



**960** Abbasid . Madinat al-Salam mint. al-Muktafi AH 289-295.  
Struck AH 293 AR Dirham 24 mm, 3,45 g Good Very Fine

**1**



**961** Abbasid . al-Muqtadir AH 295-320. Struck AH 29\* AR  
Dirham 23 mm, 3,22 g Good Very Fine

**1**



**962** Abbasid . Al-Ahwaz Mint . al-Muqtadir AH 295-320. Struck  
AH 312 AR Dirham 25 mm, 3,38 g Good Very Fine

**1**



**963** Abbasid . al-Kufa mint. al-Muqtadir AH 295-320. Struck AH  
304 AR Dirham 26 mm, 3,41 g Good Very Fine

**1**



**964** Abbasid . Madinat al-Salam mint. al-Muqtadir AH 295-320.  
Struck AH 303 AR Dirham 26 mm, 3,68 g Good Very Fine

**1**



**965** Abbasid . Nasibin Mint. al-Muqtadir AH 295-320. Struck AH  
301 AR Dirham 27 mm, 3,04 g Good Very Fine

**1**



**966** Abbasid . Nasibin Mint . al-Muqtadir AH 295-320. Struck AH 308 AR Dirham 28 mm, 3,73 g Good Very Fine

**1**



**967** Abbasid . Shiraz Mint. al-Muqtadir AH 295-320. Struck AH 309 AR Dirham 27 mm, 3,30 g Good Very Fine

**1**



**968** Abbasid . Shiraz Mint . al-Muqtadir AH 295-320. Struck AH 303 AR Dirham 27 mm, 3,26 g Good Very Fine

**1**



**969** Abbasid . Surra Man Ra'a mint. al-Muqtadir AH 295-320. Struck AH 317 AR Dirham 29 mm, 4,27 g Good Very Fine

**1**



**970** Abbasid . Harran Mint . Al-Radi AH 322-329. Struck AH 323 AR Dirham 26 mm, 3,46 g Nearly Extremely Fine

**1**



**971** Abbasid . Madinat al-Salam mint. Al-Radi AH 322-329. Struck AH 327 AR Dirham 24 mm, 3,54 g Good Very Fine

**1**



**972** Abbasid . Madinat al-Salam mint. al-Muttaqi AH 329-333. Struck AH 330 AR Dirham 24 mm, 3,48 g Good Very Fine

**1**



**973** North Africa. Al-Abbasiya Mint AH 158-169. Al-Mahdi ,  
Struck AH 167 AR Dirham 27 mm, 2,62 g Good Very Fine

**1**



**974** Anatolia and Al-Jazirah (Post-Seljuk). Artuqids (Kayfa &  
Amid). Fakhr al-Din Qara Arslan AH 543-570. Fals Æ 22 mm, 4,25  
g Fine

**1**



**975** Persia (Post-Mongol). Eretnids . Dirham AR 20 mm, 1,61 g  
Very Fine

**1**



**976** Persia (Post-Mongol). Eretnids . Dirham AR 19 mm, 1,61 g  
Very Fine

**1**



**977** Persia (Post-Mongol). Eretnids . Dirham AR 20 mm, 1,62 g  
Very Fine

**1**



**978** Persia (Post-Mongol). Eretnids . Dirhem AR 22 mm, 1,74 g  
Very Fine

**1**



**979** Persia (Post-Mongol). Eretnids . Dirham AR 20 mm, 1,62 g  
Very Fine

**1**



**980** Persia (Post-Mongol). Eretnids . Dirham AR 18 mm, 1,67 g  
Very Fine

**1**



**981** Persia (Post-Mongol). Eretnids . Dirham AR 18 mm, 1,62 g  
Very Fine

**1**



**982** Persia (Post-Mongol). Eretnids . Dirham AR 19 mm, 1,65 g  
Very Fine

**1**



**983** Persia (Post-Mongol). Eretnids . Dirham AR 20 mm, 1,56 g  
Very Fine

**1**



**984** Persia (Post-Mongol). Eretnids . Dirham AR 19 mm, 1,62 g  
Very Fine

**1**



**985** Persia (Post-Mongol). Eretnids . Dirham AR 22 mm, 1,61 g  
Very Fine

**1**



**986** Persia (Post-Mongol). Eretnids . Dirham AR 19 mm, 1,57 g  
Very Fine

**1**



**987** Persia (Post-Mongol). Eretnids . Dirham AR 20 mm, 1,59 g  
Very Fine

**1**



**988** Persia (Post-Mongol). Eretnids . Dirham AR 21 mm, 1,62 g  
Very Fine

**1**



**989** Persia (Post-Mongol). Eretnids . Dirham AR 20 mm, 1,68 g  
Very Fine

**1**



**990** Persia (Post-Mongol). Eretnids . Dirham AR 20 mm, 1,57 g  
Very Fine

**1**



**991** Persia (Post-Mongol). Eretnids . Dirham AR 18 mm, 1,59 g  
Very Fine

**1**



**992** Persia (Pre-Seljuq). . Fals Æ 19 mm, 3,01 g Very Fine

**1**



**993** Buwahyid. Al-Kufa Mint AH 328-356. Muizz al-Dawla ,  
Struck AH 339 , with Rukn al-Dawla AR Dirham 26 mm, 2,90 g  
Good Very Fine

**1**



**994** Buwahyhid. Madinat al-Salam Mint AH 328-356. Struck AH 334 , with Imad al-Dawla AR Dirham 24 mm, 3,29 g Good Very Fine

**1**



**995** Samanids. Andaraba Mint . Nasr II b. Ahmad AH 301-331. Struck AH 307 , with Ahmad bin Sahl AR Dirham 28 mm, 2,74 g Good Very Fine

**1**



**996** Byzantine. Weight  $\text{Æ}$  10 mm, 3,41 g Fine

**1**



**997** Byzantine. Weight  $\text{Æ}$  12 mm, 1,08 g Fine

**1**



**998** Byzantine. Weight  $\text{Æ}$  15 mm, 2,18 g Nearly Very Fine

**1**



**999** Byzantine. Weight  $\text{Æ}$  15 mm, 4,41 g Fine

**1**



**1000** Byzantine. Weight  $\text{Æ}$  21 mm, 13,02 g Fine

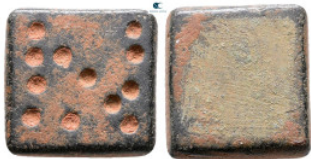
**1**





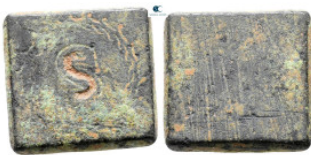
**1001** Byzantine. Weight Æ 18 mm, 4,39 g Nearly Very Fine

**1**



**1002** Byzantine. Weight Æ 17 mm, 4,17 g Very Fine

**1**



**1003** Byzantine. Weight Æ 22 mm, 6,67 g Good Fine

**1**



**1004** Byzantine. Weight Æ 16 mm, 2,08 g Nearly Very Fine

**1**



**1005** Byzantine. Weight Æ 15 mm, 4,54 g Nearly Very Fine

**1**



**1006** Byzantine. Weight Æ 18 mm, 4,16 g Very Fine

**1**



**1007** Byzantine. Weight Æ 23 mm, 51,60 g Fine

**1**



**1008** Byzantine. Seal Pb 24 mm, 8,43 g Good Fine

**1**



**1009** Byzantine. Seal Pb 25 mm, 8,82 g Very Fine

**1**



**1010** Islamic. Weight Æ 17 mm, 5,83 g Very Fine

**1**



**1011** Islamic. Weight Æ 14 mm, 2,05 g Very Fine

**1**



**1012** Islamic. Weight Æ 18 mm, 3,13 g Nearly Very Fine

**1**



**1013** Islamic. Weight Æ 16 mm, 5,81 g Very Fine

**1**



**1014** Islamic. Weight Æ 21 mm, 2,35 g Fine

**1**



**1015** Islamic. Weight  $\text{Æ}$  13 mm, 2,85 g Very Fine

**1**



**1016** Islamic. Weight  $\text{Æ}$  20 mm, 14,37 g Very Fine

**1**



**1017** Islamic. Weight  $\text{Æ}$  11 mm, 4,15 g Very Fine

**1**



**1018** Islamic. Weight  $\text{Æ}$  15 mm, 8,18 g Very Fine

**1**



**1019** Islamic. Weight  $\text{Æ}$  15 mm, 8,23 g Very Fine

**1**



**1020** Islamic. Weight  $\text{Æ}$  17 mm, 5,72 g Very Fine

**1**



**1021** Islamic. Weight  $\text{Æ}$  15 mm, 2,88 g Very Fine

**1**



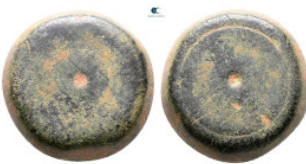
**1022** Islamic. Weight  $\text{Æ}$  13 mm, 2,96 g Very Fine

**1**



**1023** Islamic. Weight  $\text{Æ}$  24 mm, 15,78 g Fine

**1**



**1024** Islamic. Weight  $\text{Æ}$  13 mm, 3,82 g Nearly Very Fine

**1**



**1025** Islamic. Weight  $\text{Æ}$  17 mm, 14,99 g Fine

**1**



**1026** Islamic. Weight  $\text{Æ}$  20 mm, 29,07 g Fine

**1**



**1027** Islamic. Weight  $\text{Æ}$  21 mm, 27,58 g Fine

**1**



**1028** Islamic. Weight  $\text{Æ}$  19 mm, 28,50 g Very Fine

**1**



**1029** Islamic. Weight  $\text{Æ}$  21 mm, 29,63 g Very Fine

**1**



**1030** Islamic. Weight  $\text{Æ}$  18 mm, 14,55 g Fine

**1**



**1031** Islamic. Weight  $\text{Æ}$  17 mm, 14,21 g Very Fine

**1**



**1032** Islamic. Weight  $\text{Æ}$  26 mm, 57,87 g Fine

**1**



**1033** Islamic. Weight  $\text{Æ}$  16 mm, 14,38 g Fine

**1**



**1034** Islamic. Weight  $\text{Æ}$  16 mm, 14,37 g Fine

**1**



**1035** Islamic. Weight  $\text{Æ}$  17 mm, 14,33 g Very Fine

**1**



**1036** Islamic. Weight  $\text{Æ}$  19 mm, 26,22 g Nearly Very Fine

**1**



**1037** Islamic. Weight  $\text{Æ}$  22 mm, 29,47 g Fine

**1**



**1038** Islamic. Weight  $\text{Æ}$  20 mm, 20,84 g Very Fine

**1**



**1039** Islamic. Weight  $\text{Æ}$  16 mm, 14,48 g Very Fine

**1**



**1040** Islamic. Weight  $\text{Æ}$  20 mm, 28,60 g Very Fine

**1**



**1041** Islamic. Weight  $\text{Æ}$  15 mm, 14,50 g Very Fine

**1**



**1042** Islamic. Weight  $\text{Æ}$  16 mm, 14,65 g Very Fine

**1**



**1043** Islamic. Weight  $\text{Æ}$  25 mm, 58,34 g Fine

**1**



**1044** Islamic. Weight  $\text{Æ}$  19 mm, 28,86 g Very Fine

**1**



**1045** Islamic. Weight  $\text{Æ}$  20 mm, 29,37 g Very Fine

**1**



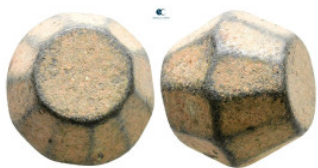
**1046** Islamic. Weight  $\text{Æ}$  17 mm, 14,56 g Very Fine

**1**



**1047** Islamic. Weight  $\text{Æ}$  20 mm, 28,64 g Very Fine

**1**



**1048** Islamic. Weight  $\text{Æ}$  15 mm, 14,36 g Very Fine

**1**



**1049** Austria. Leopold I of Habsburg AD 1657-1705. 3 Kreuzer  
AR 21 mm, 1,53 g Very Fine, holed

**1**



**1050** Austria. Leopold I of Habsburg AD 1657-1705. 3 Kreuzer AR 21 mm, 1,70 g Very Fine, holed

**1**



**1051** France. Henri IV AD 1589-1610. 1/2 Franc AR 28 mm, 6,88 g Fine, holed

**1**



**1052** Germany. Maximilian II AD 1564-1576. Taler AR 34 mm, 14,19 g Very Fine

**1**



**1053** Germany. AD 1934. 2 Reichsmark 25 mm, 7,95 g Very Fine

**1**



**1054** Germany. AD 1934. 2 Reichsmark 25 mm, 7,99 g Very Fine

**1**



**1055** Germany. AD 1935. 5 Reichsmark 30 mm, 13,86 g Very Fine

**1**



**1056** Germany. AD 1936. 5 Reichsmark 29 mm, 13,87 g Very Fine

**1**





**1057** Germany. AD 1936. 5 Reichsmark 30 mm, 13,91 g Very Fine

**1**



**1058** Germany. AD 1937. 2 Reichsmark 25 mm, 7,91 g Very Fine

**1**



**1059** Germany. AD 1937. 2 Reichsmark 25 mm, 8,04 g Very Fine

**1**



**1060** Germany. AD 1937. 2 Reichsmark 25 mm, 8,02 g Very Fine

**1**



**1061** Germany. AD 1938. 2 Reichsmark 25 mm, 7,94 g Very Fine

**1**



**1062** Germany. AD 1938. 2 Reichsmark 25 mm, 7,97 g Very Fine

**1**



**1063** Germany. AD 1938. 2 Reichsmark 25 mm, 8,05 g Very Fine

**1**



**1064** Germany. AD 1938. 2 Reichsmark 25 mm, 7,97 g Very Fine

**1**



**1065** Germany. AD 1938. 2 Reichsmark 25 mm, 7,94 g Very Fine

**1**



**1066** Germany. AD 1939. 2 Reichsmark 25 mm, 7,97 g Very Fine

**1**



**1067** Germany. AD 1939. 2 Reichsmark 25 mm, 7,99 g Very Fine

**1**



**1068** Netherlands. Holland AD 1575. Lion Dollar or Leeuwendaalder AR 40 mm, 26,58 g Good Fine

**1**



**1069** Turkey. Ottoman empire . Akçe AR 13 mm, 1,13 g Very Fine

**1**



**1070** Lot of ca. 18 greek coins / SOLD AS SEEN, NO RETURN! Very Fine

**1**



**1071** Lot of ca. 50 greek bronze coins / SOLD AS SEEN, NO RETURN! Very Fine

**1**



**1072** Lot of ca. 80 judaeen prutah / SOLD AS SEEN, NO RETURN! Very Fine

**1**



**1073** Lot of ca. 50 provincial tetradrachms / SOLD AS SEEN, NO RETURN! Nearly Very Fine

**1**



**1074** Lot of ca. 50 provincial tetradrachms / SOLD AS SEEN, NO RETURN! Nearly Very Fine

**1**



**1075** Lot of ca. 40 roman provincial bronze coins / SOLD AS SEEN, NO RETURN! Fine

**1**



**1076** Lot of ca. 40 roman provincial bronze coins / SOLD AS SEEN, NO RETURN! Fine

**1**



**1077** Lot of ca. 40 roman provincial bronze coins / SOLD AS SEEN, NO RETURN! Fine

**1**



**1078** Lot of ca. 40 roman provincial bronze coins / SOLD AS SEEN, NO RETURN! Fine

**1**



**1079** Lot of ca. 27 roman bronze coins / SOLD AS SEEN, NO RETURN! Nearly Very Fine

**1**



**1080** Lot of ca. 50 roman bronze coins / SOLD AS SEEN, NO RETURN! Fine

**1**



**1081** Lot of ca. 100 roman bronze coins / SOLD AS SEEN, NO RETURN! Fine

**1**



**1082** Lot of ca. 60 ancient coins / SOLD AS SEEN, NO RETURN! Very Fine

**1**



**1083** Lot of ca. 50 medieval bronze coins / SOLD AS SEEN, NO RETURN! Good Fine

**1**



**1084** Lot of ca. 50 medieval bronze coins / SOLD AS SEEN, NO RETURN! Good Fine

**1**