



Numisart

Auction 3

18 February 2024

All prices are starting prices (EUR)
PDF catalog created by www.biddr.com



1 A LARGE EUROPEAN LATE BRONZE AGE TWISTED TORQUE Circa 10th-8th century BC. Large, twisted hoop of solid bronze, the plain tapering ends with flattened coiled terminals. Beautiful dark-green patina! Diameter 24.5 cm Ex Gorny & Mosch, Munich, Auction 214 (2013), Lot 634.

150



2 A EUROPEAN LATE BRONZE AGE SPEAR HEAD Circa 12th-9th century BC. A fine example of a bronze socketed spear head with a slender leaf-shaped blade. The shaft tapers through the length of the spearhead to the point. A hole on either side of the shaft for fixing. End of the socket slightly chipped. L 15.2 cm Austrian private collection, acquired on the European art market.

400



3 A GREEK RED-FIGURED OWL SKYHOS Apulia, circa 4th century BC. Two handled black glazed pottery drinking vessel decorated on both sides with a facing owl between two sprigs of laurel. Broken and repaired (glued) on one side, rim slightly chipped. H 71 mm, Diameter 87 mm (without handles) Ex Belgian private collection formed in the 1980s-90s.

600



4 AN ATTIC LEKANIS FROM THE NOSTELL PRIORY COLLECTION Circa 2nd half of 5th century BC. Black glazed pottery lekanis with a reserved band above the foot decorated with black glazed hatched lines, a reserved band around the lip marked with a black glazed wavy pattern and darker red double lines marked beneath on the exterior of the body, a circular foot reserved on part of the base and marked with a black glazed annule, and two handles with splayed terminals. Circular lid not preserved. Handwritten collector's mark on the base. H 60 mm, Diameter 128 mm (without handles) Ex private collection Prof. Zweymüller, Vienna. Sold at Christie's London 1975. Before, Nostell Priory Collection, Yorkshire. Acquired by Charles Winn, 8th Baronet of Nostell, from Naples in 1819 and sailed for England on 9th February 1819.

600



5 A ROMAN BRONZE OIL LAMP WITH A SWAN HEAD HANDLE Circa 1st-2nd century AD. The round body with raised, profiled edge set on a low foot ring; with a circular filling hole and an extended nozzle flanked by volutes. The arched handle terminates in a swan head finial with naturalistically worked features. The beak of the swan is horizontally pierced, probably to attach a chain with a lid for the filling hole (not preserved). Attractive and rare. L 142 mm, H 82 mm Austrian private collection, acquired in the 1980s-90s.

500



6 A ROMAN BRONZE STATUETTE OF A SEATED YOUNG BOY WITH TUNIC Circa 2nd-3rd century AD. The seated boy with long curly hair is wearing a short, girded tunic. Both hands are reaching out; one leg is pulled up, the other is hanging down. Pierced between the legs for attachment. Well modelled and attractive. H 94 mm Austrian private collection, acquired in the 1980s-90s.

800



7 A RARE EARLY ROMAN BRONZE STATUETTE OF A LICTOR WITH TOGA Circa 1st century AD. An impressive and very rare togate statuette of a lictor, the official attendant and bodyguard of Roman magistrates. The head of the present example is turned slightly to the right, with a Julio-Claudian hairstyle of short, curved locks. The bent right arm is broken below the elbow. In the left hand he is carrying the fascis, the bundle of elm or birch rods tied with a red belt that symbolised the magistrates' executive power. (The upper part of the fascis was separately added and is not preserved.) The back of the statuette is hollowed out, with a massive round stud for attachment. Most likely, this statuette belonged to a larger historical relief depicting a ceremonial scene, perhaps on the breastplate of a bronze statue of a horse, where similar statuettes of lictors are known to have been displayed. For a close parallel see: The Art Institute of Chicago, inv. no. 1980.809. H 10.2 cm Austrian private collection, acquired on the European art market.

600



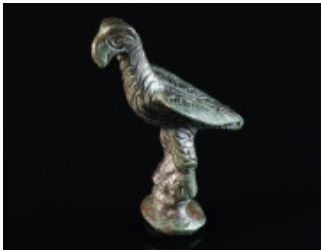
8 A ROMAN BRONZE FIGURE OF A PANTHER Circa 1st-2nd century AD. A finely modelled figure of a panther in a lively pose: seated upon his haunches, the right paw raised, and the head turned back, looking upwards with open jaw. Black patina with some deposits. In Ancient Greek and Roman mythology, panthers were the companions of the wine god Dionysus and sacred to the god. L 31 mm, H 25 mm Ex private collection, acquired on the German art market before 2000.

150



9 AN ATTRACTIVE ROMAN BRONZE BUST OF MINERVA Circa 2nd-3rd century AD. A massive, well modelled bronze applique depicting a bust of Minerva. The goddess is wearing tunic below a scaly aegis, and a crested Corinthian helmet, decorated with two volutes on the sides. Slightly repatinated. H 53 mm Austrian private collection, acquired on the European art market.

150



10 A ROMAN BRONZE FIGURE OF AN EAGLE Circa 2nd-3rd century AD. The bird stands lofty on a round profiled base. The body is all over decorated with a mixture of an incised feather-like design and wavy lines to represent the plumage. The wings are partly spread with the tips crossed. The head features large eyes and a long, sharply hooked beak. An attractive piece from the Roman provinces. Nice patina. H 54 mm Ex private collection, acquired on the German art market before 2000.

250



11 A MAGNIFICENT ROMAN BRONZE ARM FROM A MALE STATUETTE Circa 1st-2nd century AD. A strongly muscular, slightly bent right arm from a statuette, probably originally holding an attribute or implement in the hand. Broken from just below the shoulder. The remains of a small channel on top of the arm (at the break line) suggest that it was made separately in antiquity and then attached to the statuette; a procedure that can be observed on other statuettes of the highest quality level. Probably from a statuette of Hercules, or a mythological creature such as a satyr or a centaur, the complete statuette would have measured about 25 cm in height. An outstanding object! L 86 mm Austrian private collection, acquired in the 1980s-90s.

100



12 A LATE ROMAN GOLD RING WIT AN AMETHYST INTAGLIO Circa 4th century AD. Composed of a solid hoop formed from beaded gold wire and an offset oval bezel. The bezel is set with an amethyst intaglio depicting the bust of a winged figure facing left, probably Eros. The setting was damaged and has been professionally repaired. Ring size 43 (EU), outer diameter of hoop 20 mm; Gold! 5.76 g Ex European private collection, acquired on the German art market before 2000.

750



13 A PAIR OF ROMAN GOLD EARRINGS WITH GARNETS Circa 1st-2nd century AD. An extremely fine pair of Roman wheel-shaped gold earrings formed from beaded gold wire and framed by a plain gold wire. The centre is set with a garnet. A hook to the reverse. Diameter 13 mm (each); Gold! 1.86 g Ex European private collection, acquired on the German art market before 2000.

280



14 A ROMAN SILVER OPENWORK TRUMPET BROOCH WITH DUCK HEAD Circa 2nd-3rd century AD. Fine plate brooch with a complex Celtic trumpet-style design featuring a duck head final. With spring and pin. L 39 mm Austrian private collection, acquired in the 1980s-90s.

350



15 A ROMAN BRONZE OPENWORK TRUMPET BROOCH Circa 2nd-3rd century AD. Fine plate brooch with a complex Celtic trumpet-style design featuring an S-shaped ornament in the centre. With hinged pin. L 36 mm (max.) Austrian private collection, acquired in the 1980s-90s.

120



16 A BYZANTINE BRONZE RELIQUARY CROSS WITH ST. JOHN Circa 10th-12th century AD. Complete and lavishly decorated reliquary cross (enkolpion) depicting St. John on the obverse (front half), identified by the inscription HOANC (for Ιωάννης = St. John) above his head. The saint wears an elaborately decorated robe, his hands upraised in prayer ('orans'). The reverse (back half) features a star-shaped design with punched and incised decoration. The cross arms are in the corners further embellished with small 'disks' that carry ring-and-dot motifs. Two disks restored and a small hole in the centre of the reverse closed, hinge axes repaired. H 112 mm, W 60 mm Ex Austrian art market, acquired on the UK art market.

600



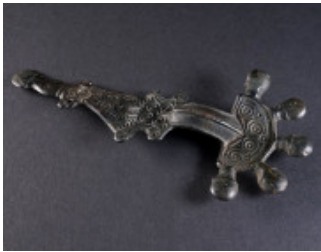
17 A LARGE BYZANTINE BRONZE PROCESSIONAL CROSS Circa 10th-12th century AD. Completely preserved cross with flaring arms, decorated in the corners with small disks that once carried further decoration (remains of solder visible). In the centre, an engraved medallion depicting St. John with halo around the head, his right hand holding a book, his left forms a gesture of blessing. Above the medallion, an engraved inscription reading: O A(ΓΙΟC) HOANHC (for Ο Άγιος Ιωάννης = 'Saint John'). Originally attached to a pole (remains of solder at the base). Right arm reattached. H 20.8 cm Ex private collection, acquired on the German art market before 2000.

300



18 AN EARLY BYZANTINE LIGULA WITH A CHAIN WITH CROSS PLAQUE Circa 6th-7th century AD. A pin-like medical instrument or cosmetic spoon with a small scoop at one end (ligula), unusually furnished with a chain with cross plaque and triangular hook for attachment/suspension. For a comparison see: L. Wamser and G. Zahlhaas, Rom und Byzanz. Archäologische Kostbarkeiten aus Bayern (Munich 1998), cat. no. 249 (only the chain) with further references. L 11.9 cm (ligula), and 13 cm (chain) Ex European private collection, acquired on the German art market before 2000.

50



19 A VERY LARGE MIGRATION PERIOD BRONZE BROOCH Circa 6th-7th century AD. So-called 'Slavic brooch'. Bow brooch with semicircular head plate with five knobs and lozenge-shaped foot. Head plate and foot richly decorated with punched ring-and-dot motifs; the foot terminates in a stylised animal head. Spring and pin made of iron not preserved; bent and a repaired break at the foot. L 17.5 cm Austrian private collection, acquired in the 1980s-90s.

300



20 AN ELABORATE LATE MEDIEVAL GILDED SILVER RING WITH AN EAGLE Circa 14th-15th century AD. A beautiful, gilded silver ring with an oval bezel embellished with an eagle snatching a bird, framed by a beaded border. The flared shoulders are decorated with leaf-shaped ornaments. A highly decorative ring! Ring size 60 (EU) Ex European private collection, acquired on the German art market between 2002-2009.

150



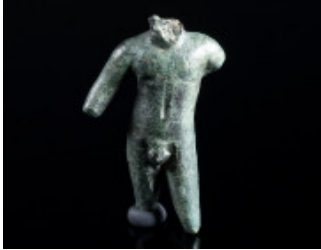
21 AN ELABORATE LATE MEDIEVAL GILDED SILVER RING Circa 14th-15th century AD. An elaborately decorated large and heavy silver ring with an octagonal bezel featuring an heraldic Fleur-de-Lis. The offset shoulders are adorned with an ornamental design in high relief. Ring size 66 (EU) Ex European private collection, acquired on the UK art market before 2000.

400



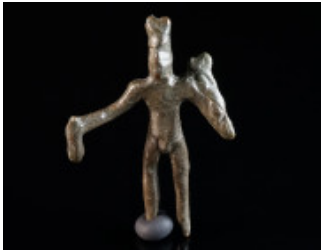
22 A ROMAN BRONZE STATUETTE OF JUPITER Circa 2nd-3rd century AD. Jupiter, the supreme god of the Roman pantheon, is depicted nude, with long beard and curly hair. He is holding a patera in his lowered right hand and originally held a sceptre in his raised left. Left foot not preserved. H 73 mm Ex private collection, acquired on the German art market before 2000.

150



23 A ROMAN BRONZE TORSO OF APOLLO Circa 1st-3rd century AD. Small bronze statuette, originally depicting the god standing in contrapposto with the weight on his right leg, his arms held out, and the head turned to his proper left. A quiver of arrows hangs from his back. Head, arms, and lower legs now missing. H 46 mm Ex private collection, acquired on the German art market before 2000.

80



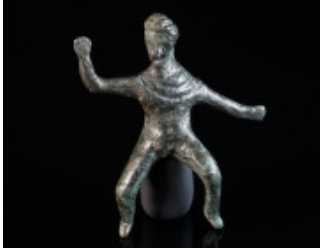
24 A ROMANO-CELTIC BRONZE STATUETTE OF MERCURY Circa 1st-2nd century AD. Mercury is depicted in a highly stylised manner; nude but for a winged cap, holding herald's staff (caduceus) and cloak (?) in his left hand, and a money bag (marsupium) in his right. Probably a votive offering. Rare! H 60 mm Ex private collection, acquired on the German art market before 2000.

50



25 A ROMAN BRONZE STATUETTE OF MERCURY Circa 2nd-3rd century AD. A stylised representation of Mercury on a profiled round base; the god is wearing a winged cap and a cloak, holding the herald's staff (caduceus) in his left hand, and a money bag (marsupium) in his right. H 53 mm Ex Austrian private collection D. B., acquired in the 1980s-90s.

80



26 A ROMAN BRONZE STATUETTE OF A THRACIAN HORSEMAN Circa 2nd-3rd century AD. The hero with long hair tied into a knot at the back of the head is shown nude but for a cloak over his shoulder, his right arm raised, and the left held out. H 50 mm Ex private collection, acquired on the German art market before 2000.

80



27 A ROMAN BRONZE STATUETTE OF A THRACIAN HORSEMAN Circa 2nd-3rd century AD. The hero with long hair tied into a knot at the back of the head is wearing a tunic; his right hand raised in the gesture of the so-called 'benedictio Latina', a gesture indicating speech or knowledge transmitted through speech and, later, a gesture of blessing; a patena in his extended left. Left leg not preserved. H 55 mm Ex private collection, acquired on the German art market before 2000.

50



28 A ROMAN BRONZE STATUETTE OF A STRIDING HORSE Circa 2nd-3rd century AD. The right foreleg raised, the head slightly turned to the left; some incised and dotted decoration on the neck. Cast in one piece together with the profiled rectangular base; a hole at the back for insertion of the separately added tail (now missing). L 35 mm, H 41 mm Austrian private collection, acquired on the European art market.

150



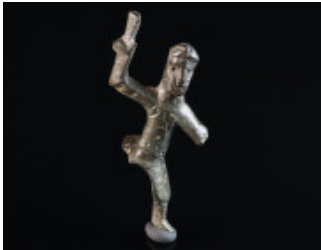
29 A ROMAN BRONZE LEFT ARM WITH LION SKIN Circa 1st-3rd century AD. Outstretched left arm with lion skin from a statuette of Hercules; the elaborately worked lion skin with incised and punched decoration; remains of solder material and a small recess on top of the arm indicate that it was once holding Hercules' club. Wonderful green patina. L 32 mm, H 55 mm Ex private collection, acquired on the German art market before 2000.

80



30 A ROMAN BRONZE STATUETTE OF JUPITER Circa 2nd-3rd century AD. Jupiter, the supreme god of the Roman pantheon, is depicted nude, with long beard and curly hair. He probably held a thunderbolt or patera in his lowered right hand and a sceptre in his raised left. Both lower arms and right foot not preserved. Some damage to the patina, especially on the legs. H 72 mm Ex private collection, acquired on the German art market before 2000.

150



31 A ROMAN BRONZE STATUETTE OF A THRACIAN HORSEMAN Circa 2nd-3rd century AD. The hero with long hair is wearing a tunic and cuirass (?); his right hand raised in the gesture of the so-called 'benedictio Latina', a gesture indicating speech or knowledge transmitted through speech and, later, a gesture of blessing. Lower left arm and right leg not preserved. H 56 mm Ex private collection, acquired on the German art market before 2000.

50



32 A ROMAN BRONZE STATUETTE OF MERCURY Circa 2nd-3rd century AD. A stylised representation of Mercury on a round base; the god is wearing a winged cap and a cloak, probably holding the herald's staff (caduceus) in his left hand, and a money bag (marsupium) in his right. H 55 mm Ex European private collection, acquired on the German art market between 2002-2009.

35



33 AN UNPUBLISHED ROMAN DANUBIAN RIDER LEAD VOTIVE PLAQUE Circa 3rd-4th century AD. Circular 'Mystery Plaque'. Depicted are (from top to bottom): busts of Sol (right) and Luna (left), between them a female figure (Nemesis). In the main register, a facing goddess (Epona), flanked by two horsemen with their right hand raised, trampling on two prone men; behind them a jug (left) and a jug on a tripod table (right). At the bottom in the centre, a sacrifice scene; to the left a figure of a ram, to the right a lion. For the iconography see: R. F. Ertl, *Donaureiter Bleivotivtafeln* (Petronell-Carnuntum 1996). Some cracks and damage. UNPUBLISHED TYPE! Diameter 72 mm Austrian private collection, acquired on the European art market.

180



34 A RARE ROMAN DANUBIAN RIDER LEAD VOTIVE PLAQUE Circa 3rd-4th century AD. Circular 'Mystery Plaque'. Depicted are (from top to bottom): busts of Sol (left) and Luna (right), between them a female figure (Nemesis), behind them a tripod table and a lion. In the main register, a facing goddess (Epona), flanked by two horsemen with their right hand raised, trampling on two prone men; behind them a further figure with ram's head (left) and a rooster and an eagle (right). At the bottom, a sacrifice scene and further implements. For the iconography cf. Ertl Type G2 (aedicula-type with central medallion), but circular as Type H, see: R. F. Ertl, *Donaureiter Bleivotivtafeln* (Petronell-Carnuntum 1996). Rare and unpublished! Diameter 68 mm Austrian private collection, acquired on the European art market.

250



35 A RARE ROMAN DANUBIAN RIDER LEAD VOTIVE PLAQUE Circa 3rd-4th century AD. Circular 'Mystery Plaque'. Depicted are (from top to bottom): busts of Sol (left) and Luna (right), between them an eagle and two stars, further objects around. In the main register, a facing goddess (Epona) and a tripod table with a large fish, flanked by two horsemen swinging an axe in their raised left hand, trampling on two prone men; behind them a further figure on either side. At the bottom, a kantharos in the centre, flanked by a lion (left) and a rooster (right); further figures and implements around. For the upper part see Ertl Type H 16-001 (fragmented plaque): R. F. Ertl, *Donaureiter Bleivotivtafeln* (Petronell-Carnuntum 1996). Very rare type, lower part unpublished! Minor damage. Diameter 80 mm Austrian private collection, acquired on the European art market.

180



36 A ROMAN BRONZE HORSE HEAD APPLIQUE Circa 2nd-3rd century AD. The horse head, slightly turned to its proper right, is framed by two 'wings' and emerges from a circular disc. Possibly a representation of Pegasus (?). Remains of an iron pin or stud for attachment on the back. H 31 mm, Depth 24 mm Ex private collection, acquired on the German art market before 2000.

50



37 A ROMAN BRONZE BELT FITTING IN THE FORM OF A HARE Circa 2nd century AD. The body of the hare is decorated with enamel and a punched design. On the reverse are two T-shaped lugs for attachment to a belt. The eye is modernly inserted with a carnelian; rough surface. L 30 mm Austrian private collection, acquired in the 1980s-90s.

50



38 A ROMAN BRONZE APPLIQUE IN THE FORM OF A DOLPHIN Circa 2nd-3rd century AD. Worked in relief, the eyes indicated with circled dots, at the tail a rivet hole for attachment; remains of the original tinning. L 49 mm Ex private collection, acquired on the German art market before 2000.

50



39 A ROMAN BRONZE APPLIQUE OF A BEARDED GOD Circa 2nd-3rd century AD. Small draped bust of a bearded god wearing a Phrygian cap; probably a representation of Jupiter Sabazius. H 37 mm Ex European private collection, acquired on the German art market between 2002-2009.

40



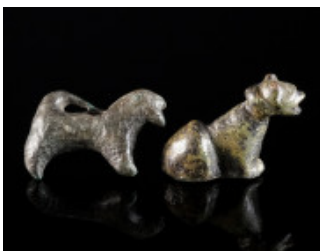
40 A ROMAN BRONZE MINIATURE OF A HERM Circa 1st-3rd century AD. Miniature square pillar topped by a bearded male head; with arm stumps and stylised male genitalia adorning the midsection. Slightly broken at the lower end. H 46 mm Ex private collection, acquired on the German art market before 2000.

50



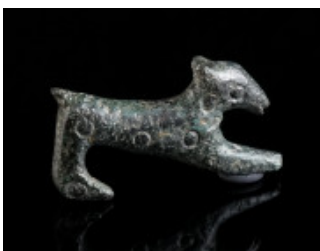
41 A SMALL ROMAN BRONZE VOTIVE STATUETTE Circa 2nd-3rd century AD. A highly abstracted depiction of probably a Thracian horseman. The right arm raised, decorated with incisions; the left outstretched. Two diagonal incisions across the chest possibly indicating the shoulder strap of a quiver (?). Rare and interesting! H 36 mm Ex European private collection, acquired on the German art market between 2002-2009.

40



42 TWO ANCIENT BRONZE ANIMAL FIGURINES Circa 8th century BC - 3rd century AD. A small figurine of a griffin (?), probably Geometric period, with a hole for suspension/attachment; and a small figurine of a lion (?), probably Greek or Roman period. L 28 mm, and L 29 mm Ex European private collection, acquired on the German art market between 2002-2009.

80



43 A GREEK/ROMAN BRONZE FIGURINE OF A DOG Circa 4th century BC - 3rd century AD. Figurine of a stretching dog, the body decorated with punched ring motifs. L 38 mm Ex European private collection, acquired on the German art market between 2002-2009.

50



44 A ROMAN SILVER AMULET PENDANT OF ISIS AND HARPOCRATES The divine pair Isis and her son Harpocrates, or 'Horus the child', are facing the viewer. Both wear a crown and a cornucopia in their left hand. Isis holds a patera in her right; Harpocrates is depicted with his right index finger to his mouth. At the back, two attachment loops. Minor parts of the crowns broken. In Roman times, the cult of Horus and his mother Isis enjoyed great popularity. H 30 mm Ex private collection, acquired on the German art market before 2000.

80



45 A ROMAN SILVER AMULET PENDANT OF HARPOCRATES Circa 1st-3rd century AD. Harpocrates, or 'Horus the Child', the son of Isis and Osiris, is depicted as a young boy with a child's sidelock of hair and a finger to his mouth. He wears the crowns of Upper and Lower Egypt and holds a cornucopia. At his feet, Anubis and the Horus falcon. At the back, an attachment loop and a small silver ring for suspension. Small part of the crown broken, otherwise intact. H 36 mm Ex private collection, acquired on the German art market before 2000.

80



46 TWO ROMAN BRONZE FIGURAL AMULET PENDANTS Circa 2nd-3rd century AD. One probably depicting Harpocrates (?), holding his right hand to his mouth and his left to his backside, a broken suspension loop at the back. The other depicting the triple-bodied Hekate, the goddess of the moon and of sorcery, presiding over the crossroads. Suspension loop on the top; rare! H 35 mm, and H 27 mm Ex European private collection, acquired on the German art market between 2002-2009.

70



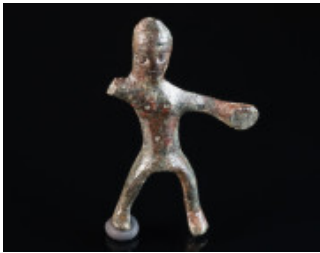
47 TWO ROMAN BRONZE APPLIQUES WITH A HEAD OF ATTIS Circa 2nd-3rd century AD. Both showing Attis with Phrygian cap. One probably originally a pelta-shaped applique with a central head of the god; the other a head with a bronze stud for attachment on the reverse. H 31 mm, and H 20 mm Ex private collection, acquired on the German art market before 2000.

50



48 A ROMAN BRONZE EAGLE ON A DEER'S HEAD Circa 1st-3rd century AD. A small bronze figurine of an eagle with its wings partly spread, perching on the head of a deer. Probably a votive bronze connected with the cult of Jupiter Dolichenus. H 31 mm Austrian private collection, acquired on the European art market.

120



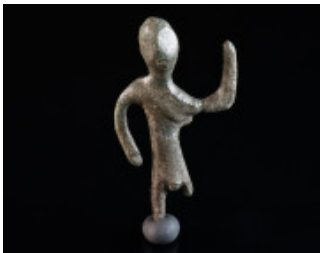
49 A ROMAN BRONZE STATUETTE OF A HORSEMAN Circa 2nd-3rd century AD. The hero is shown nude but for a stylised Phrygian cap (?), his right arm was originally raised, a patera in the outstretched left. H 47 mm Ex private collection, acquired on the German art market before 2000.

40



50 TWO ROMAN BRONZE STATUETTES OF THRACIAN HORSEMEN Circa 2nd-3rd century AD. The heroes with long hair are wearing a tunic, the right arm originally raised, and the left held out. Arms and legs partially broken. H 45 mm, and H 41 mm Ex private collection, acquired on the German art market before 2000.

70



51 A ROMANO-CELTIC BRONZE STATUETTE OF A GOD Circa 1st-2nd century AD. The divine figure, possibly Apollo, is depicted in a highly stylised manner; nude but for a quiver on the back, suspended from a strap; the left arm raised, the right lowered. Probably a votive offering. H 57 mm Ex private collection, acquired on the German art market before 2000.

50



52 A ROMAN BRONZE APPLIQUE OF A WOMAN Circa 2nd-3rd century AD. Head of a woman with elaborate hairstyle. H 31 mm Ex private collection, acquired on the German art market before 2000.

90



53 TWO ROMAN BRONZE ZOOMORPHIC CASKET LEGS Circa 1st-3rd century AD. One featuring a well detailed, bony claw. The other a sturdy leg decorated on the front with a horse head and leg with hoof; two nail holes for fastening to a wood casket; somewhat bent out of shape. H 18 mm, and H 62 mm Ex private collection, acquired on the German art market before 2000.

50



54 TWO ROMAN BRONZE LION HEAD APPLIQUES Circa 2nd-3rd century AD. One with wide open mouth and a bronze pin for attachment at the back; the other more detailed and with a large bronze stud at the back. H 36 mm, and H 33 mm Ex private collection, acquired on the German art market before 2000.

50



55 A ROMAN BRONZE PANTHER HEAD ATTACHMENT Circa 1st-3rd century AD. Large panther head with hollow cylindrical extension for attachment at the back. L 58 mm Austrian private collection, acquired in the 1980s-90s.

100



56 A HIGHLY STYLISED ROMAN BRONZE STATUETTE OF MERCURY Circa 2nd-3rd century AD. The god is probably wearing a winged cap and a cloak, likely holding the herald's staff (caduceus) in his left hand, and a money bag (marsupium) in his right; set on a profiled square base, all cast in one piece. H 42 mm Ex European private collection, acquired on the German art market between 2002-2009.

35



57 A ROMAN BRONZE APPLIQUE IN THE SHAPE OF A MALE BUST Circa 2nd-3rd century AD. Small bust of a bearded bold man with bare chest. Probably the depiction of an athlete or a boxer. For comparable depictions see the Mosaics from the baths of Caracalla at Rome; with a stud for attachment at the back. Rare! H 16 mm Ex European private collection, acquired on the German art market between 2002-2009.

40



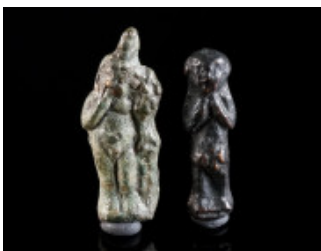
58 TOP PART OF A ROMAN JUG HANDLE WITH A THUMB Circa 1st-2nd century AD. Upper part of a finely worked and decorated handle of a jug; the thumb rest of the handle is worked as a human thumb with nail. Rare! For a comparable but less detailed handle see: A. Kaufmann-Heinimann, *Die römischen Bronzen der Schweiz V. Neufunde und Nachträge* (Mainz 1994), cat. no. 275. H 62 mm, W 49 mm Ex private collection, acquired on the German art market before 2000.

75



59 TWO ROMAN BRONZE AMULET PENDANTS DEPICTING HARPOCRATES Circa 2nd-3rd century AD. These small amulets are usually interpreted as depicting Harpocrates, holding his right hand to his mouth and his left to his backside. Both with a suspension loop on the back. H 24 mm, and H 21 mm Ex European private collection, acquired on the German art market between 2002-2009.

70



60 TWO ROMAN BRONZE FIGURAL AMULET PENDANTS Circa 2nd-3rd century AD. One depicting Harpocrates with his finger to his mouth, wearing the crowns of Upper and Lower Egypt and holding a cornucopia; on the back, a suspension loop. The other showing a male figure (?) with his hands on the chest, his genitals prominently depicted; suspension loop on the back. H 29 mm, and H 25 mm Ex European private collection, acquired on the German art market between 2002-2009.

70



61 A ROMAN BRONZE APPLIQUE HEAD OF ATTIS Circa 2nd-3rd century AD. Attis is depicted with a Phrygian cap; a bronze stud for attachment on the reverse. H 21 mm Ex private collection, acquired on the German art market before 2000.

40



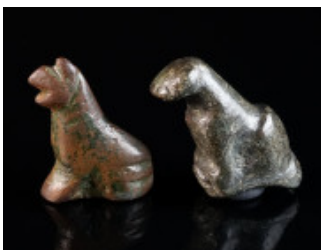
62 TWO ROMAN BRONZE HERM HASPS Circa 1st-3rd century AD. Figurative hasps in the form of miniature herms from chest/casket locks; each topped by a youthful male head and with arm stumps, the smaller with stylised male genitalia adorning the midsection. The hinge at the top and the loop at the back reveal the function; the smaller piece broken at the bottom. H 100 mm, and H 58 mm Ex private collection, acquired on the German art market before 2000.

70



63 A ROMAN BRONZE ZOOMORPHIC CASKET LEG Circa 1st-2nd century AD. Zoomorphic winged casket leg ending in a claw. Depicted is probably a bat (or griffin) with spread wings; incisions on the chest indicate the fur. The body terminates in one single foot resembling the large paw of a feline predator. H 30 mm, W 36 mm Austrian private collection, acquired on the European art market.

80



64 TWO GREEK/ROMAN BRONZE ANIMAL FIGURINES Circa 4th century BC - 3rd century AD. A small figurine of a griffin (?), and a small figurine of a lion (?). Probably Greek or Roman period. H 25 mm, and H 29 mm Ex private collection, acquired on the German art market before 2000.

90



65 TWO SMALL ROMAN FIGURAL APPLIQUES Circa 1st-3rd century AD. A silver applique in the form of a theatrical mask, and a round bronze applique with a lion head. H 10 mm, and H 12 mm Ex European private collection, acquired on the German art market between 2002-2009.

60



66 A ROMAN SILVER ARM OF A STATUETTE Circa 1st-3rd century AD. Left arm of a male statuette; well-proportioned and worked in detail, three fingers missing. L 48 mm Austrian private collection, acquired in the 1980s-90s.

50



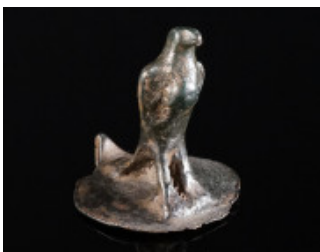
67 A ROMAN BRONZE ATTACHMENT DEPICTING SILENUS Circa 1st-3rd century AD. A finely rendered head of Silenus, shown bold and with long beard. H 31 mm Ex private collection, acquired on the German art market before 2000.

80



68 A SMALL ROMAN BRONZE FIGURINE OF A RAVEN Circa 2nd-3rd century AD. Small figurine of a raven with closed wings. H 22 mm Austrian private collection, acquired on the European art market.

90



69 A LATE ANTIQUE/EARLY BYZANTINE BRONZE LID WITH AN EAGLE Circa 4th-6th century AD. Circular lid with hinge; a figure of an eagle on top. H 35 mm Ex Ketos Auction 3 (2018), Lot 16. Collection M.C., acquired on the European art market.

100



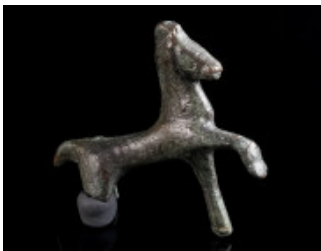
70 A ROMAN SILVER ATTACHMENT WITH SEA PANTHERS Circa 1st-2nd century AD. Two sea panthers on either side of a Greek vase, a further vase and the tail of a sea panther to the right; framed by a beaded moulding above and below. Two holes for attachment. Rare! L 24 mm Austrian private collection, acquired in the 1980s-90s.

50



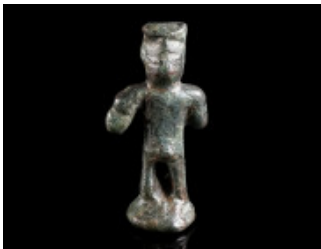
71 A ROMAN BRONZE FIGURE OF A HORSE Circa 2nd-3rd century AD. Figure of a striding horse with the right foreleg raised; legs partly broken. Possibly a votive bronze. L 47 mm Ex European private collection, acquired on the German art market before 2000.

40



72 A ROMAN BRONZE FIGURE OF A HORSE Circa 2nd-3rd century AD. Figure of a striding horse with the right foreleg raised; legs partly broken. L 45 mm, H 43 mm Ex European private collection, acquired on the German art market before 2000.

40



73 A SMALL ROMAN BRONZE STATUETTE OF MERCURY Circa 2nd-3rd century AD. A highly abstracted representation of probably Mercury on a round base; the god is wearing a winged cap and possibly a cloak over the right shoulder (hardly visible). The arms are very short with no hands visible; a money bag is possibly represented on the proper right side. H 34 mm Ex European private collection, acquired on the German art market before 2000.

50



74 A SMALL ROMAN BRONZE VOTIVE STATUETTE Circa 2nd-3rd century AD. A highly abstracted depiction of probably a Thracian horseman. The right arm raised, the left outstretched; both decorated with incisions. Incised crossed line on the chest. Rare and interesting! H 35 mm Ex European private collection, acquired on the German art market before 2000.

50



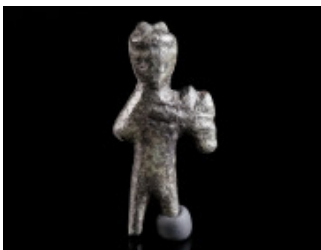
75 A ROMAN BRONZE STATUETTE OF A THRACIAN HORSE AND RIDER Circa 2nd-3rd century AD. The hero with long hair tied into a knot at the back of the head is wearing a tunic; his right hand raised and a patera in his extended left. The horse with the right foreleg raised (broken), two further legs and the tail partly broken. Horse and rider are of matching size but feature a somewhat different colour. H 60 mm (total height, horse and rider) Ex European private collection, acquired on the German art market before 2000.

100



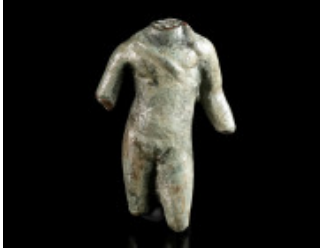
76 A ROMAN BRONZE FIGURE OF A HORSE Circa 2nd-3rd century AD. Figure of a striding horse with the right foreleg raised; bridle indicated with incised lines. Legs partly broken. Possibly a votive bronze. L 47 mm Ex European private collection, acquired on the German art market before 2000.

40



77 A SMALL ROMAN BRONZE STATUETTE OF MERCURY Circa 2nd-3rd century AD. Stylised representation of Mercury with winged cap and cloak, holding the herald's staff (caduceus) in his left hand; the right hand not preserved. Both legs partly broken. H 40 mm Ex European private collection, acquired on the German art market before 2000.

40



78 A ROMAN BRONZE TORSO OF APOLLO Circa 1st-3rd century AD. Small bronze statuette, originally depicting the god standing in contrapposto with the weight on his right leg, his arms held out, and the head turned to his proper left. Two long locks falling down on the shoulders. Across the right side of his chest is the strap that holds a quiver full of arrows on his back. Head, lower arms, and lower legs now missing. H 36 mm Ex European private collection, acquired on the German art market before 2000.

40



79 TWO APPLIQUES IN THE SHAPE OF THEATRICAL MASKS Circa 2nd-3rd century AD. The larger piece with a square stud on the reverse, the small mask with an additional loop on top of the head (possibly a handle attachment?). H 22 mm, and H 23 mm (including loop) Ex European private collection, acquired on the German art market before 2000.

50



80 A GROUP OF FOUR ROMAN BRONZE TERMINALS WITH ANIMAL HEADS Circa 1st-2nd century AD. Two wolf heads and two duck heads; all most probably finals from the handles of Roman ladles; one wolf head later reused as a pendant. L 30-44 mm Ex European private collection, acquired on the German art market before 2000.

40



81 A ROMAN BRONZE FIGURE OF A MOUSE 1st-3rd century AD. Sitting on its hind legs, holding a round bun to its mouth with its forepaws; somewhat rough surface. H 20 mm, L 32 mm Austrian private collection, acquired on the European art market.

120



82 A ROMAN BRONZE STATUETTE OF AN EAGLE Circa 1st-3rd century AD. A small figurine of an eagle with closed wings perched on a profiled pyramidal base. Probably a votive bronze of the cult of Jupiter Dolichenus. H 39 mm Austrian private collection, acquired on the Dutch art market.

120



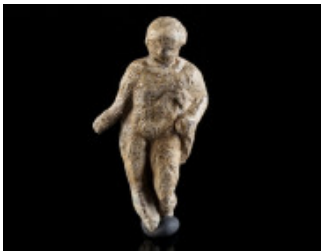
83 A ROMAN LEAD STATUETTE AND A HEAD OF VENUS Circa 2nd-3rd century AD. A half-draped statuette of Venus flanked by a small figure of winged Eros, both set on a high base; bent and head of Venus missing. And a head of Venus in relief with an elaborate hairstyle. H 74 mm, and H 27 mm Ex private collection, acquired on the German art market before 2000.

50



84 A ROMAN LEAD STATUETTE OF DIANA/ARTEMIS Circa 2nd-3rd century AD. The draped goddess is shown hunting with a bow, pulling an arrow from her quiver. Lower section of the statuette somewhat broken and bent. Rare! H 47 mm Ex private collection, acquired on the German art market before 2000.

35



85 A ROMAN LEAD STATUETTE OF A YOUTHFUL GOD Circa 1st-2nd century AD. A detailed small lead statuette of a young god with a well defined body. Nude but for a mantle hanging from the shoulders; both hands (with attributes) and feet missing. Possibly a representation of Mercury? H 40 mm Ex private collection, acquired on the German art market before 2000.

35



86 A ROMAN LEAD FIGURE OF A GLADIATOR Circa 2nd-3rd century AD. Thracian (Thraex) shown in combat, wearing a plumed helmet and holding a rectangular shield and short sword with curved blade (sica). Broken at legs and arm reattached. An interesting gladiatorial piece. Rare! H 37 mm Ex private collection, acquired on the German art market before 2000.

35



87 TWO ROMAN LEAD STATUETTES OF TRACIAN HORSEMEN Circa 2nd century AD. The heroes wearing tunic are depicted on their bridled horses. Both fragmented and with a few cracks; head and legs of one horse reattached. For a near complete example see: Die Thraker. Das goldene Reich des Orpheus. Exhibition catalogue (Mainz 2004), cat. no. 300. L 50 mm, and L 41 mm Ex private collection, acquired on the German art market before 2000.

50



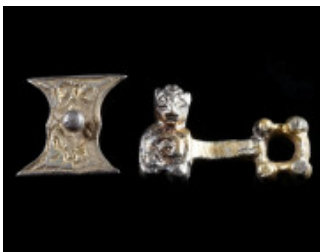
88 TWO BYZANTINE BRONZE CLOAK CLASPS WITH HEADS Circa 6th-8th century AD. One part each of a two-part toggle fastening. Both with a stylised face, the circular clasp with further decoration. L 40 mm, and L 41 mm Ex European private collection, acquired on the German art market between 2002-2009.

50



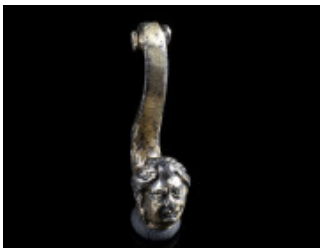
89 TWO BYZANTINE/MEDIEVAL BRONZE FIGURAL CLOAK CLASPS Circa 6th-12th century AD. One part each of a two-part toggle fastening. One with a stylised head, the other with two creatures (?). L 44 mm, and L 29 mm Ex European private collection, acquired on the German art market between 2002-2009.

50



90 TWO BYZANTINE/MEDIEVAL SILVER-GILT ADORNMENTS Circa 12th-15th century AD. One part of a clasp with the bust of a creature (?); and a decorated fitting with a stud. L 29 mm, and L 18 mm Ex European private collection, acquired on the German art market between 2002-2009.

50



91 A LATE MEDIEVAL SILVER-GILT ORNAMENT WITH A HEAD OF CUPID Circa 14th-16th century AD (?). Small volute shaped ornament terminating in the head of a Cupid. H 23 mm Ex European private collection, acquired on the German art market between 2002-2009.

50



92 A LATE MEDIEVAL BRONZE FIGURAL KNIFE TERMINAL Circa 15th century AD. Knife terminal with the stylised head of a bearded man with a cap, and a hoof with horseshoe on top. An interesting object composed in the manner of a gryllos. H 18 mm Austrian private collection, acquired in the 1980s-90s.

30



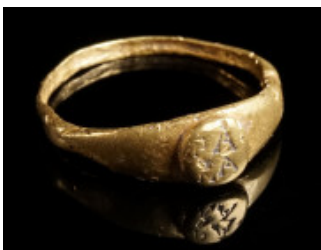
93 A HEAVY ROMAN GOLD RING WITH A GREEN CHALCEDONY INTAGLIO Circa 3rd century AD. Ring with wide gold hoop and large, angled, and faceted shoulders; the oval bezel set with a green chalcedony intaglio depicting a bust of Sol. The intaglio probably reset into the ring. Ring size 52 (EU); Gold! 15.20 g Ex European private collection, acquired on the German art market before 2000.

1'450



94 A ROMAN GOLD RING WITH A CARNELIAN INTAGLIO Circa 2nd-3rd century AD. Ring with an offset oval bezel set with a carnelian intaglio depicting Asclepius standing facing, head right, leaning on a serpent-entwined staff to right, and gathering the himation with his right hand. Hoop and bezel deformed (crushed) and repaired; ancient intaglio reset into ring but possibly not belonging. Ring size 42 (EU); Gold! 5.26 g Ex European private collection, acquired on the German art market before 2000.

600



95 A ROMAN GOLD RING WITH INSCRIPTION Circa 2nd-3rd century AD. With an offset circular bezel and flared shoulders; the bezel with an abbreviated inscription. Some damage to the surface. Ring size 55 (EU); Gold! 3.36 g Austrian private collection, acquired in the 1980s-90s.

220



96 A DELICATE ROMAN GOLD RING WITH GARNET Circa 2nd-3rd century AD. The circular bezel set with a conical garnet; two pellets on each shoulder. Slightly bent and setting damaged. Ring size 46 (EU); Gold! 1.38 g Austrian private collection, acquired in the 1980s-90s.

110



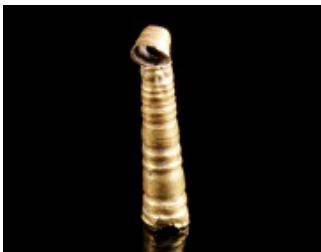
97 A LATE ANTIQUE GOLD RING WITH A CROSS Circa 4th-6th century AD. Ring with small, projecting round bezel decorated with a cross. Slightly bent. Ring size 63 (EU); Gold! 2.70 g Austrian private collection, acquired in the 1980s-90s.

220



98 A PAIR OF ROMAN GOLD EARRINGS WITH PENDANT Circa 3rd century AD. The hoops of the earrings are made of twisted gold wire, each with hook-and-loop fastener and a small decorative spiral on one end; the pendant with grape-shaped ornament. For an almost identical earring see: L. Ruseva-Slokoska, Roman Jewellery (Sofia 1991), cat. no. 40. Total L 32 mm each (max.); Gold! 5.35 g (together) Ex private collection, acquired on the German art market before 2000.

320



99 A ROMAN GOLD HERCULES' CLUB PENDANT Circa 2nd-3rd century AD. Hollow-modelled amulet pendant of conical shape with vertical fluting; a strap loop for suspension to the top. The lower end originally set with a stone or glass. L 25 mm; Gold! 1.00 g Austrian private collection, acquired in the 1980s-90s.

80



100 THREE MATCHING CYLINDRICAL GOLD BEADS Circa 3rd-4th century AD. Spacer beads made of gold sheet metal, decorated with undulating and twisted gold wire. One bead bent. L 14-17 mm; Gold! 1.75 g (together) Austrian private collection, acquired in the 1980s-90s.

140



101 A ROMAN GOLD EARRING Circa 2nd-3rd century AD. Plain hoop with hook-and-loop fastener and a small decorative spiral on one end. Slightly bent. L 21 mm; Gold! 1.49 g Ex European private collection, acquired on the German art market between 2002-2009.

90



102 BEZEL OF A RARE EARLY MEDIEVAL GOLD ARCHITECTURAL RING Circa 6th-10th century AD (?). In the shape of a miniature building/temple with an arcade design (columns and round arches), the 'roof' made of silver/niello and iron (?); band hoop broken. Reminiscent of later Jewish wedding rings. Possibly an early prototype? L 10 mm, W 8 mm, H 11 mm; Gold and Silver/Niello! 3.00 g (total) Austrian private collection, acquired in the 1980s-90s.

150



103 A PREHISTORIC GOLD BEAD ON A HOOP Circa 2nd-1st millennium BC. Biconical bead on an open hoop made of gold wire. L 8 mm (bead), Diameter 29 mm (hoop); Gold! 2.87 g Austrian private collection, acquired in the 1980s-90s.

230



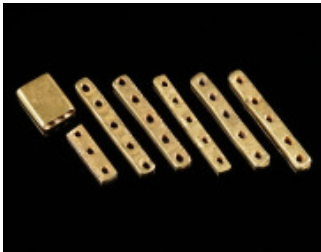
104 A PREHISTORIC GOLD BEAD Circa 2nd-1st millennium BC. Biconical bead with large hole. Diameter 7 mm; Gold! 1.52 g Ex European private collection, acquired on the German art market between 2002-2009.

90



105 A SET OF 27 LATE BRONZE AGE GOLD DRESS ORNAMENTS Circa 12th-8th century BC. 24 round dress ornaments with concentric circles worked in repoussé, and three plain conical ornaments; all pierced for attachment. Many deformed/bent. Diameter 5-19 mm; Gold! 16.74 g (together) Ex European private collection, acquired on the German art market between 2002-2009.

1'000



106 A GROUP OF SEVEN PREHISTORIC GOLD SEPARATORS/DIVIDERS Circa 2nd-1st millennium BC. Seven rectangular separators/dividers from a necklace; pierced and most decorated with grooves on the edges. L 7-17 mm; Gold! 3.93 g (together) Ex European private collection, acquired on the German art market between 2002-2009.

250



107 A ROMAN CARNELIAN CAMEO WITH A HEAD OF EROS Circa 1st-3rd century AD. Circular cameo carved in high relief with a frontal head of Eros, characterised by his typical childlike features, with chubby cheeks and large eyes. Diameter 11 mm Austrian private collection, acquired on the European art market.

350



108 A ROMAN CARNELIAN INTAGLIO WITH THE GODDESS CERES Circa 1st-3rd century AD. Oval intaglio showing Ceres standing right, holding sceptre, poppy, and an ear of corn; a rudder at feet (an attribute of Fortuna). Left edge damaged. H 15 mm Austrian private collection, acquired in the 1980s-90s.

50



109 A ROMAN CARNELIAN INTAGLIO WITH MERCURY Circa 2nd-3rd century AD. Small oval intaglio depicting Mercury standing right, holding a stylised herald's staff (caduceus) and a cloak in his right hand, and a money bag (marsupium) in his left. H 9 mm Austrian private collection, acquired on the European art market.

150



110 A ROMAN CARNELIAN INTAGLIO DEPICTING ARTEMIS EPHESIA Circa 2nd-3rd century AD. Oval intaglio featuring Artemis of Ephesus standing facing, two torches in her hands, and flanked by two (stylised) stags. The temple of Artemis and her cult statue at Ephesus were regarded as one of the seven wonders of the ancient world. Some white spots; edge chipped at one o'clock. H 11 mm Austrian private collection, acquired in the 1980s-90s.

50



111 A ROMAN CARNELIAN INTAGLIO WITH FORTUNA Circa 1st-3rd century AD. Oval intaglio depicting Fortuna standing right, holding rudder and cornucopia. Surface of stone partly white. H 15 mm Austrian private collection, acquired in the 1980s-90s.

50



112 A ROMAN CARNELIAN INTAGLO WITH CERES/FORTUNA Circa 2nd-3rd century AD. Small oval intaglio depicting Ceres/Fortuna seated right, holding a cornucopia in her right hand, and a poppy (?) and ears of corn in her left; a rudder at her feet. Minor earthen deposits; edge chipped on revers. H 15 mm Austrian private collection, acquired in the 1980s-90s.

50



113 A GROUP OF THREE HIGHLY ELABORATE SLAVIC TEMPLE RINGS Circa 10th-11th century AD. Two silver-gilt temple rings, filigree (one fragmented); and a silver-plated temple ring. L 30-35 mm Ex European private collection, acquired on the German art market between 2002-2009.

100



114 A GROUP OF THREE SLAVIC BRONZE EARRINGS Circa 9th-11th century AD. Three decorated earrings/temple rings, one fragmented. L 27-46 mm Ex European private collection, acquired on the German art market between 2002-2009.

50



115 A GREEK SILVER HAIR SPIRAL Circa 5th-4th century BC. Hair spiral formed from thick silver wire, the terminals decorated with granulation and coiled thin wire. Diameter 18 mm Austrian private collection, acquired on the European art market.

60



116 A BYZANTINE BRONZE RING WITH AN ANGEL Circa 6th-9th century AD. Ring with roundish bezel depicting an angel with halo and cross staff standing facing. Hoop with overlapping ends. Ring size 60 (EU) Ex European private collection, acquired on the German art market between 2002-2009.

70



117 A SMALL ROMAN BRONZE RING WITH EROS Circa 3rd century AD. Small ring with a navette-shaped offset bezel depicting Eros advancing left, holding a wreath. Outer diameter 16 mm Ex European private collection, acquired on the German art market between 2002-2009.

70



118 A BYZANTINE BRONZE RING WITH A BULL'S HEAD Circa 5th-7th century AD. With offset shoulders and a projecting round bezel engraved with a facing bull's head. Ring size 57 (EU) Ex European private collection, acquired on the German art market between 2002-2009.

70



119 A LATE ANTIQUE/ BYZANTINE BRONZE RING WITH GEOMETRIC DESIGN Circa 5th-8th century AD. With a projecting round bezel engraved with 'IIXIXII'. Ring size 53 (EU) Ex European private collection, acquired on the German art market between 2002-2009.

35



120 A MEDIEVAL BRONZE RING WITH A PENTAGRAM Circa 10th-13th century AD. Ring with oval bezel depicting a pentagram framed by a beaded border. Ring size 46 (EU) Ex European private collection, acquired on the German art market between 2002-2009.

35



121 A ROMAN BRONZE RING WITH A LION Circa 3rd century AD. Ring with offset oval bezel depicting a lion striding left, a star above. Surface of hoop slightly pitted. Ring size 48 (EU) Ex European private collection, acquired on the German art market between 2002-2009.

35



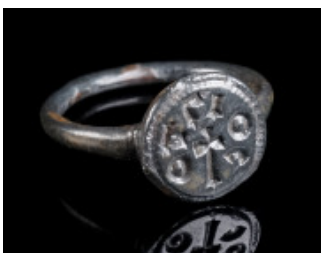
122 A LATE ROMAN RING WITH AN EARLY CHRISTIAN MONOGRAM Circa 4th century AD. Ring with rectangular bezel featuring an IX monogram formed of the Greek letters I (Iota) and X (Chi), standing for Iesous Christos (Ιησους Χριστος). Framed by a beaded border. Ring size 55 (EU) Ex European private collection, acquired on the German art market between 2002-2009.

35



123 A BYZANTINE BRONZE RING WITH AN ANGEL Circa 12th-14th century AD. Ring with octagonal bezel depicting an angel with halo standing right, holding a cross staff. Ring size 52 (EU) Ex European private collection, acquired on the German art market between 2002-2009.

70



124 AN EARLY BYZANTINE BRONZE RING WITH INSCRIPTION AND CROSS Circa 6th-7th century AD. Bronze ring with offset round bezel depicting a cross surrounded by the legend O ΑΓΙΟC ('The Holy' without further specification). Ring size 61 (EU) Ex European private collection, acquired on the German art market between 2002-2009.

70



125 A ROMAN BRONZE RING WITH A BUST OF HERCULES Circa 2nd-3rd century AD. Small bronze ring with a bezel featuring the bust of a bearded man (probably Hercules) in three-quarter relief. Ring size 44 (EU) Ex European private collection, acquired on the German art market between 2002-2009.

70



126 A ROMAN BRONZE RING WITH VICTORY Circa 2nd-3rd century AD. Bronze ring with oval bezel depicting Victory advancing right, holding wreath and palm frond. Ring size 59 (EU) Ex European private collection, acquired on the German art market between 2002-2009.

70



127 A MEDIEVAL BRONZE RING WITH A STAR Circa 13th-15th century AD. Ring with circular bezel with an engraved star. Ring size 56 (EU) Ex European private collection, acquired on the German art market between 2002-2009.

35



128 A LATE ROMAN BRONZE RING WITH A STAR DESIGN Circa 4th century AD. Ring with rectangular bezel featuring an engraved star and punched dots. Possibly an early Christian monogram standing for Ι(ησους) Χ(ριστος). The hoop is worked in a beaded design. Ring size: 55 (EU) Ex European private collection, acquired on the German art market between 2002-2009.

35



129 A THIN HAMMERED MEDIEVAL BRONZE RING Circa 10th-12th century AD. With a split hoop with overlapping ends; the oval bezel decorated with an ornamental design. Ring size 56 (EU) Ex European private collection, acquired on the German art market between 2002-2009.

35



130 A MEDIEVAL BRONZE RING WITH A STAR Circa 13th-15th century AD. With a circular bezel and an engraved star design. Ring size 53 (EU) Ex European private collection, acquired on the German art market between 2002-2009.

35



131 AN EARLY BYZANTINE SILVER MONOGRAM RING Circa 6th-8th century AD. Ring with short, offset shoulders and an oval bezel with an incised Byzantine monogram. Ring size 64 (EU) Ex European private collection, acquired on the German art market between 2002-2009.

70



132 A LATE ANTIQUE/EARLY BYZANTINE BRONZE RING WITH AN ANTELOPE Circa 5th-7th century AD. Ring with projecting round bezel depicting a resting antelope seated left. Ring size 56 (EU) Ex European private collection, acquired on the German art market between 2002-2009.

35



133 A ROMAN SILVER RING Circa 3rd century AD. With projecting round bezel and cusped triangular shoulders. Ring size 50 (EU) Ex European private collection, acquired on the UK art market before 2000.

50



134 A MEDIEVAL BRONZE RING WITH TWO FIGURES Circa 10th-13th century AD. Hoop with overlapping ends; the bezel incised/punched with two standing figures within a square frame, further punched decoration on either side. Ring size 45 (EU) Ex European private collection, acquired on the German art market between 2002-2009.

35



135 A MEDIEVAL BRONZE RING WITH ORNAMENTAL DESIGN Circa 13th-15th century AD. With an offset rectangular bezel with incised decoration and offset shoulders. Ring size 47 (EU) Ex European private collection, acquired on the German art market between 2002-2009.

35



136 A MEDIEVAL BRONZE RING WITH GEOMETRIC DESIGN Circa 13th-15th century AD. With decorated circular bezel and offset shoulders. Ring size 54 (EU) Ex European private collection, acquired on the German art market between 2002-2009.

35



137 A MEDIEVAL BRONZE RING WITH AN ORNAMENTAL DESIGN Circa 13th-15th century AD. With decorated circular bezel and offset shoulders. Ring size 60 (EU) Ex European private collection, acquired on the German art market between 2002-2009.

35



138 A ROMAN SILVER RING WITH A LAYERED STONE Circa 2nd century AD. Hoop with expanding shoulders and oval bezel set with a layered stone. Setting slightly damaged on one side. Ring size 46 (EU) Ex European private collection, acquired on the UK art market before 2000.

50



139 A MEDIEVAL BRONZE RING WITH A STAG Circa 12th-14th century AD. Ring with offset circular bezel depicting a stylised stag (?) prancing left. Ring size 56 (EU) Ex European private collection, acquired on the German art market between 2002-2009.

50



140 A LATE ANTIQUE BRONZE RING WITH A STYLISED ANIMAL Circa 4th-6th century AD. Ring with offset circular bezel depicting a highly abstracted animal standing left. Ring size 46 (EU) Ex European private collection, acquired on the German art market between 2002-2009.

50



141 AN EARLY BYZANTINE BRONZE RING WITH A BIRD Circa 6th-7th century AD. With an offset round bezel depicting a bird with outstretched wings, a branch in front and a star/cross above. Ring size 48 (EU) Ex European private collection, acquired on the German art market between 2002-2009.

50



142 AN EARLY BYZANTINE BRONZE RING WITH A SAINT Circa 6th-7th century AD. Ring with offset round bezel depicting a facing saint with halo, his hands upraised in prayer ('orans'), a cross on either side. Ring size 61 (EU) Ex European private collection, acquired on the German art market between 2002-2009.

50



143 A LATE MEDIEVAL OR EARLY MODERN BRONZE RING Circa 15th-16th century AD. Ring with projecting hexagonal, decorated bezel and offset shoulders. Ring size 60 (EU) Ex European private collection, acquired on the German art market between 2002-2009.

35



144 A LATE ROMAN BRONZE RING WITH LION AND EAGLE Circa 4th century AD. Ring with raised circular bezel depicting a stylised lion and an eagle. The hoop is worked in a beaded design. Ring size 60 (EU) Ex European private collection, acquired on the German art market between 2002-2009.

35



145 A LATE MEDIEVAL OR EARLY MODERN BRONZE RING Circa 15th-16th century AD. With a projecting oval bezel with engraved ornamental design. The hoop with vertical and horizontal grooves. Ring size 57 (EU) Ex European private collection, acquired on the German art market between 2002-2009.

35



146 A LATE MEDIEVAL OR EARLY MODERN BRONZE RING Circa 15th-16th century AD. With a projecting circular bezel with engraved ornamental design. The hoop with vertical and horizontal grooves. Ring size 57 (EU) Ex European private collection, acquired on the German art market between 2002-2009.

35



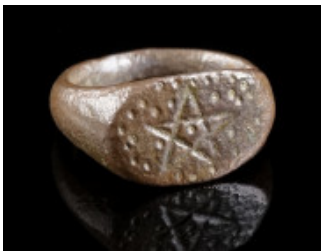
147 A MEDIEVAL BRONZE RING WITH SQUARE BEZEL Circa 13th-15th century AD. Ring with projecting square bezel with incised decoration. The hoop with several ribs and punched decoration. Ring size 58 (EU) Ex European private collection, acquired on the German art market between 2002-2009.

35



148 A BYZANTINE BRONZE RING WITH TWO DOVES AND A CHRISTOGRAM Early Byzantine, circa 6th-7th century AD. Ring with oval bezel depicting two facing doves. Above them in the centre a Christogram (Chi-Rho). Ring size 51 (EU) Ex European private collection, acquired on the German art market between 2002-2009.

35



149 A SMALL MEDIEVAL BRONZE RING WITH A PENTAGRAM Circa 10th-13th century AD. Ring with oval bezel depicting a pentagram framed by a beaded border. Outer diameter 15mm Ex European private collection, acquired on the German art market between 2002-2009.

35



150 A DELICATE ROMAN BRONZE RING WITH ENAMEL Circa 2nd century AD. Ring with an offset circular, enamelled bezel. Two roundels on the shoulders, on either side of the bezel, originally filled with enamel or glass. Ring size 48 (EU) Ex European private collection, acquired on the German art market between 2002-2009.

35



151 A LATE MEDIEVAL OR EARLY MODERN BRONZE RING Circa 15th-16th century AD. Ring with an oval bezel and offset shoulders, decorated with an incised design. Ring size 54 (EU) Ex European private collection, acquired on the German art market between 2002-2009.

35



152 AN EARLY BYZANTINE BRONZE RING WITH A PEACOCK Circa 6th-7th century AD. With an offset circular bezel engraved with a stylised peacock striding left. Ring size 48 (EU) Ex European private collection, acquired on the German art market between 2002-2009.

70



153 AN ELABORATELY DECORATED ISLAMIC MEDIEVAL SILVER RING Timurid dynasty, circa 15th century AD. A heavy silver ring with a navette-shaped bezel, all over decorated with an intricate 'arabesque' design. The ornaments on the bezel, the shoulders, and the hoop were originally inlaid with gold and green enamel, traces of which are still preserved. Ring size 61 (EU) Ex European private collection, acquired on the German art market between 2002-2009.

70



154 A BYZANTINE/MEDIEVAL BRONZE RING WITH A PANTHER Circa 12th-14th century AD. Ring with oval bezel engraved with a prancing panther to the right, his head turned. The shoulders with a design of punched dots. Ring size 57 (EU) Ex European private collection, acquired on the German art market between 2002-2009.

70



155 A BYZANTINE BRONZE RING WITH TWO CROSSES Circa 6th-9th century AD. With an oval bezel decorated with a palm frond and a garland (?) flanked by two crosses. Ring size 58 (EU) Ex European private collection, acquired on the German art market between 2002-2009.

70



156 A MEDIEVAL SILVER RING WITH ORNAMENTAL DECORATION Circa 10th-13th century AD. With circular bezel, engraved with a star-shaped ornament. Ring size 55 (EU) Ex European private collection, acquired on the German art market between 2002-2009.

35



157 A LATE MEDIEVAL OR EARLY MODERN BRONZE RING Circa 15th-16th century AD. With engraved ornaments on the circular bezel. The faceted hoop decorated with linear incisions. Ring size 59 (EU) Ex European private collection, acquired on the German art market between 2002-2009.

35



158 A LATE ANTIQUE/EARLY BYZANTINE BRONZE RING WITH A LION Circa 5th-7th century AD. With a circular bezel engraved with a lion to the right. Ring size 47 (EU) Ex European private collection, acquired on the German art market between 2002-2009.

35



159 A LATE MEDIEVAL OR EARLY MODERN BRONZE RING Circa 15th-16th century AD. With a projecting, star-shape bezel and offset shoulders. Ring size 59 (EU) Ex European private collection, acquired on the German art market between 2002-2009.

35



160 A LATE BYZANTINE BRONZE RING WITH TWO EAGLES Circa 12th-14th century AD. With an oval bezel decorated with two engraved eagles (?), and an incised small cross on the hoop. Ring size 49 (EU) Ex European private collection, acquired on the German art market between 2002-2009.

50



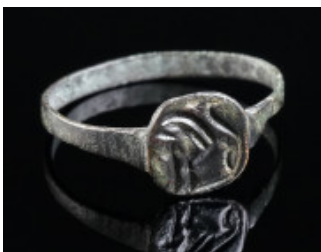
161 AN EARLY BYZANTINE BRONZE RING WITH A BIRD Circa 6th-7th century AD. With an oval bezel engraved with a bird to the right, its wings spread and the head turned. Ring size 49 (EU) Ex European private collection, acquired on the German art market between 2002-2009.

50



162 A ROMAN BRONZE RING WITH VICTORY Circa 3rd century AD. Bronze ring with oval bezel depicting Victory advancing left, holding wreath and palm frond. Ring size 54 (EU) Ex European private collection, acquired on the German art market between 2002-2009.

50



163 AN EARLY BYZANTINE BRONZE RING WITH A LION Circa 6th-7th century AD. With a circular bezel engraved with a lion facing to the left. Ring size 63 (EU) Ex European private collection, acquired on the German art market between 2002-2009.

35



164 A LATE ROMAN RING WITH AN EARLY CHRISTIAN MONOGRAM Circa 4th century AD. Ring with oblong bezel featuring an IX monogram formed of the Greek letters I (Iota) and X (Chi), standing for Iesous Christos (Ιησους Χριστος). Framed by a beaded border. Ring size 55 (EU) Ex European private collection, acquired on the German art market between 2002-2009.

35



165 AN EARLY BYZANTINE BRONZE RING WITH A CROSS Circa 6th-7th century AD. Small bronze ring with a bezel in the shape of a cross (pattée). Ring size 44 (EU) Ex European private collection, acquired on the German art market between 2002-2009.

35



166 A LATE MEDIEVAL OR EARLY MODERN DECORATED BRONZE RING Circa 15th-16th century AD. With a projecting bezel with ornamental design. Ring size 59 (EU) Ex European private collection, acquired on the German art market between 2002-2009.

35



167 A GILDED SILVER RING WITH INSCRIPTION Circa 14th-15th century AD. The projecting circular bezel engraved with a double-headed eagle and a blundered (?) inscription; shoulders and hoop with an incised decoration. Ring size 59 (EU) Ex European private collection, acquired on the German art market between 2002-2009.

150



168 A LATE ROMAN BRONZE RING WITH INSCRIPTION Circa 4th century AD. The drop-shaped bezel is engraved with the word VIV/AS. Ring size 53 (EU) Ex European private collection, acquired on the German art market between 2002-2009.

50



169 A ROMAN BRONZE RING WITH A HARE Circa 2nd-3rd century AD. The oval bezel is engraved with a hare to the left. Ring size 46 (EU) Ex European private collection, acquired on the German art market between 2002-2009.

50



170 A SMALL ROMAN BRONZE RING WITH TWO MICE Circa 3rd century AD. With a navette-shaped bezel engraved with two mice facing each other. Outer diameter 16 mm Ex European private collection, acquired on the German art market between 2002-2009.

50



171 A LATE ROMAN BRONZE RING WITH A HORSE OR HIPPOCAMPUS Circa 4th century AD. The circular bezel engraved with a prancing horse or a hippocampus (?). Ring size 52 (EU) Ex European private collection, acquired on the German art market between 2002-2009.

50



172 A BYZANTINE BRONZE RING WITH A LION Circa 6th-8th century AD. The oval bezel engraved with a lion jumping to the left. Ring size 52 (EU) Ex European private collection, acquired on the German art market between 2002-2009.

70



173 A ROMAN BRONZE RING WITH A GENIUS Circa 3rd century AD. With a navette-shaped bezel engraved with a standing nude genius with cornucopia and patera (?). Ring size 42 (EU) Ex European private collection, acquired on the German art market between 2002-2009.

70



174 A DELICATE ROMAN BRONZE RING WITH A CARNELIAN INTAGLIO Circa 2nd-3rd century AD. The oval intaglio features two ears of corn in a stylised manner. Ring size 44 (EU) Ex European private collection, acquired on the German art market before 2000.

80



175 A BEZEL OF A ROMAN BRONZE RING WITH A CARNELIAN INTAGLIO Circa 2nd-3rd century AD. The intaglio features two ears of corn and possibly highly stylised clasped hands (?) below. L 19 mm (total) Ex European private collection, acquired on the German art market before 2000.

50



176 AN EARLY MODERN SILVER-GILT RING WITH STONE Circa 16th century AD. The projecting square bezel set with a crystal or glass stone. Granulated decoration on the sides of the bezel, two floral ornaments on the shoulders. Hoop formed from a flat strip. Ring size 46 (EU) Ex European private collection, acquired on the German art market before 2000.

150



177 A LATE ROMAN BRONZE RING WITH STYLISED ANIMALS/CREATURES Circa 4th century AD. With offset round bezel depicting two stylised birds or some kind of creatures (?). Ring size 58 (EU) Ex European private collection, acquired on the German art market before 2000.

40



178 AN EARLY BYZANTINE BRONZE RING WITH A CROSS Circa 6th-7th century AD. With an oval bezel depicting a cross within a frame, all in a punched beaded design. Ring size 60 (EU) Ex European private collection, acquired on the German art market before 2000.

40



179 A LATE MEDIEVAL SILVER RING WITH A FLEUR-DE-LIS Circa 15th century AD. Large circular bezel mounted on a twisted hoop. The bezel engraved with a Fleur-de-Lis, surrounded by further symbols. Ring size 58 (EU) Austrian private collection, acquired on the European art market.

100



180 A GROUP OF THREE BRONZE/SILVER RINGS Circa 3rd-8th century AD. A heavy Roman third century ring, a silver ring, and a bronze ring; all with setting for a stone. Ring size 53, 61, and 54 (EU) Ex European private collection, acquired on the UK art market before 2000.

50



181 A GROUP OF SIX MEDIEVAL/EARLY MODERN BRONZE RINGS Circa 14th-16th century AD. All with decorated bezel. Ring size 54-60 (EU) Ex private collection, acquired on the German art market.

50



182 A GROUP OF FIVE MEDIEVAL/EARLY MODERN BRONZE RINGS Circa 14th-16th century AD. All with decorated bezel. Ring size 48-57 (EU) Ex private collection, acquired on the German art market.

50



183 A GROUP OF FIVE MEDIEVAL/EARLY MODERN BRONZE RINGS Circa 14th-16th century AD. All with decorated bezel. Ring size 44-57 (EU) Ex private collection, acquired on the German art market.

50



184 A GROUP OF FIVE SMALL MEDIEVAL/EARLY MODERN BRONZE RINGS Circa 14th-16th century AD. All with decorated bezel. Outer diameter 17-18 mm Ex private collection, acquired on the German art market.

50



185 A GROUP OF FIVE SMALL MEDIEVAL/EARLY MODERN BRONZE RINGS Circa 14th-16th century AD. All with decorated bezel; one probably a ring-shaped seal (outer left side on image). Outer diameter 15-18 mm Ex private collection, acquired on the German art market.

50



186 A GROUP OF FIVE SMALL MEDIEVAL/EARLY MODERN BRONZE RINGS Circa 14th-16th century AD. All with decorated bezel. Outer diameter 14-17 mm Ex private collection, acquired on the German art market.

50



187 A GROUP OF FIVE SMALL ANTIQUE BRONZE RINGS Circa 5th-7th century AD, and 14th-16th century AD. One with round bezel with ring-and-dot motif probably Late Antique, the others Late Medieval or Early Modern period. All with decorated bezel. Outer diameter 15-17 mm Ex private collection, acquired on the German art market.

50



188 A GROUP OF FIVE SMALL MEDIEVAL/EARLY MODERN BRONZE RINGS Circa 14th-16th century AD. All with decorated bezel. Outer diameter 15-17 mm Ex private collection, acquired on the German art market.

50



189 A BYZANTINE BRONZE RELIQUARY CROSS WITH A SAINT Circa 10th-12th century AD. One half of a reliquary cross (enkolpion) depicting a saint with his hands upraised in prayer ('orans'). With a blundered Greek inscription. H 51 mm, W 29 mm Ex European private collection, acquired on the German art market between 2002-2009.

50



190 A DECORATED BYZANTINE SILVER CROSS PENDANT WITH INSCRIPTION Circa 11th-13th century AD. On the obverse in the centre a medallion depicting a bust of Christ. In the four corners the Greek abbreviations (barred) IC - XC and ΘV - VO (IHCOYC XPICTOC - ΘEOY YIOΣ = Jesus Christ - Son of God). On the reverse in the four corners the inscription BA - CH - ΛH - OS (Basileos), in the middle K(YPI)E BOHΘH TO ΦOPOTAME ('Oh Lord, help the one who carries me'). Suspension loop broken. Very rare! For a comparison see: L. Wamser and G. Zahlhaas, Rom und Byzanz. Archäologische Kostbarkeiten aus Bayern (Munich 1998), cat. nos. 297-298. H 34 mm, W 27 mm Ex private collection, acquired on the German art market before 2000.

120



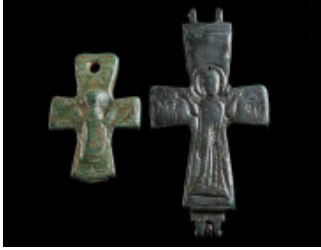
191 A BYZANTINE BRONZE RELIQUARY CROSS WITH CHRIST AND MARY Circa 10th-12th century AD. A small reliquary cross (enkolpion) depicting Christ crucified with a cross above his head on one side, and Virgin Mary with her hands upraised in prayer ('orans') on the other. One arm of the cross partly broken, and suspension loop reattached. H 53 mm Ex European private collection, acquired on the German art market between 2002-2009.

40



192 A BYZANTINE BRONZE RELIQUARY CROSS WITH CHRIST AND MARY Circa 10th-12th century AD. A small reliquary cross (enkolpion) depicting Christ crucified on one side, and Virgin Mary with her hands upraised in prayer ('orans') on the other. Suspension loop antique but probably not belonging. H 55 mm Ex private collection, acquired on the German art market.

50



193 TWO BYZANTINE BRONZE RELIQUARY CROSSES Circa 10th-12th century AD. Two halves of reliquary crosses (enkolpia) depicting Virgin Mary with her hands upraised in prayer ('orans'). On the larger cross to the sides of Mary the abbreviation (barred) MP - ΘV (MHTHP ΘEOY - Mother of God). The smaller cross pierced for suspension. H 68 mm, and H 38 mm Ex European private collection, acquired on the German art market between 2002-2009.

50



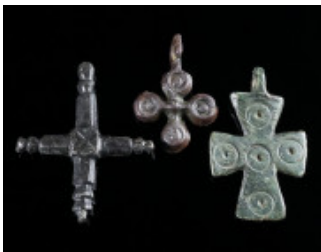
194 A GROUP OF THREE BYZANTINE BRONZE CROSS PENDANTS Circa 6th-12th century AD. Three small decorated cross pendants. Suspension loop of one piece broken. H 27-42 mm Ex European private collection, acquired on the German art market between 2002-2009.

50



195 A GROUP OF THREE BYZANTINE BRONZE CROSS PENDANTS Circa 6th-12th century AD. Three small decorated cross pendants. One with five punched ring-and-dot motifs, symbolising the Five Wounds of Christ. Suspension loop of one piece partly broken. H 30-42 mm Ex European private collection, acquired on the German art market between 2002-2009.

50



196 A GROUP OF THREE BYZANTINE BRONZE CROSS PENDANTS Circa 6th-12th century AD. Three small decorated cross pendants. One with five punched ring-and-dot motifs, symbolising the Five Wounds of Christ. Suspension loop of one piece partly broken. H 26-35 mm Ex European private collection, acquired on the German art market between 2002-2009.

50



197 A BYZANTINE LEAD CROSS PENDANT Circa 6th-11th century AD. Small solid cross pendant depicting Christ crucified with a cross above his head in a highly abstracted manner. H 41 mm Ex private collection, acquired on the German art market before 2000.

35



198 TWO BYZANTINE LEAD CROSS PENDANTS Circa 6th-11th century AD. Small solid cross pendants with a loop/hole for suspension. H 29 mm, and H 31 mm Ex private collection, acquired on the German art market before 2000.

35



199 TWO SMALL BYZANTINE LEAD CROSSES Circa 6th-12th century AD. A small, decorated cross, and a plain solid cross with two holes for attachment. H 21 mm, and H 37 mm Ex private collection, acquired on the German art market before 2000.

35



200 TWO BYZANTINE LEAD CROSS PENDANTS Circa 6th-11th century AD. A solid and very heavy cross pendant (?) with a broken loop for suspension, and a small solid cross with incised decoration. H 37 mm, and H 29 mm Ex private collection, acquired on the German art market before 2000.

35



201 A FRAGMENT OF AN ANTIQUE EASTERN ORTHODOX BRONZE CROSS Circa 16th-18th century AD. Top part of an Eastern Orthodox cross with a bust of Christ the Saviour and two angels; remains of an inscription. On the reverse, stylised incised busts/heads. H 25 mm Ex European private collection, acquired on the German art market before 2000.

35



202 TWO DECORATED BRONZE CROSSES Circa 17th-18th century AD. Two openwork crosses with elaborate decoration and rings for attachment/suspension. H 51 mm, and H 64 mm Ex European private collection, acquired on the German art market between 2002-2009.

70



203 A ROMAN LEAD PENDANT WITH SOL AND LUNA Circa 3rd-4th century AD. Small Roman pendant with suspension loop depicting a bust of Sol on one side and Luna on the other. H 19 mm Ex European private collection, acquired on the German art market between 2002-2009.

50



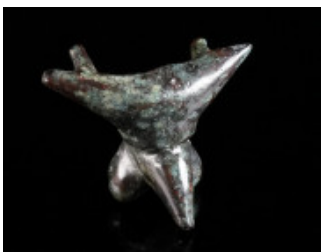
204 A ROMAN SILVER MANUS FICA AMULET PENDANT Circa 1st-3rd century AD. A fine small pendant in the shape of a fist with the thumb wedged in between two fingers. Suspension loop broken. The obscene gesture of the 'fig hand' was thought to represent female genitalia. In Roman times such amulets were commonly used to ward off the evil eye or spirit. L 18 mm Austrian private collection, acquired on the European art market.

70



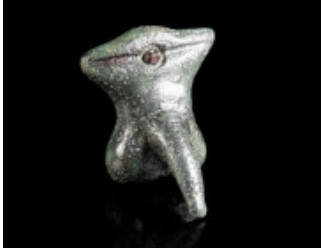
205 A ROMAN BRONZE MANUS FICA AMULET Circa 2nd-3rd century AD. A heavy bronze amulet in the shape of a fist with the thumb wedged in between two fingers. The obscene gesture of the 'fig hand' was thought to represent female genitalia. In Roman times such amulets were commonly used to ward off the evil eye or spirit. L 44 mm Austrian private collection, acquired on the European art market.

70



206 A ROMAN BRONZE PHALLIC APPLIQUE Circa 1st-3rd century AD. A fine bronze applique in the form of a three-dimensional phallus and testes. Above the phallus a trapezoidal projection, representing the pubic hair. Three studs for attachment on the reverse. Probably attached to an object to ward off evil spirits. H 22 mm Ex European private collection, acquired on the German art market before 2000.

90



207 A ROMAN BRONZE PHALLIC APPLIQUE Circa 1st-3rd century AD. A fine bronze applique in the form of a three-dimensional phallus and testes. Above the phallus a trapezoidal projection, representing the pubic hair. With a bronze stud/pin for attachment to an object; probably to ward off evil spirits. H 24 mm Ex European private collection, acquired on the German art market before 2000.

50



208 A ROMAN BRONZE PHALLIC AMULET Circa 2nd-3rd century AD. Pierced for suspension/attachment. These amulets (fascina) were thought to bring good luck and ward off evil spirits. L 33 mm Austrian private collection, acquired on the European art market.

80



209 A SMALL ROMAN BRONZE PHALLIC AMULET PENDANT Circa 2nd-3rd century AD. With a large loop for suspension. These amulets (fascina) were thought to bring good luck and ward off evil spirits. L 26 mm Ex European private collection, acquired on the German art market between 2002-2009.

50



210 A ROMANO-CELTIC SILVER AXE PENDANT Circa 1st century AD. A richly decorated axe pendant with suspension hoop. One edge of the pendant broken, pendant and hoop somewhat bent. L 74 mm (total) Ex private collection, acquired on the German art market before 2000.

35



211 AN EARLY IRON AGE SANGUISUGA-TYPE BRONZE BROOCH Circa 8th-7th century BC. A fine, solid bronze brooch with an intricate, engraved geometric decoration. The Italian name 'Sanguisuga' derives from the form of the bow, reminding of a leech. With spring and pin. L 53 mm Ex Austrian private collection D. B., acquired in the 1980s-90s.

80



212 A GRAECO-THRACIAN IRON BOW BROOCH Circa 7th-6th century BC. The bow decorated with three knobs. With triangular catch plate; spring and pin. Rare in this condition. L 47 mm Ex European private collection, acquired on the German art market between 2002-2009.

35



213 A GRAECO-THRACIAN BRONZE BOW BROOCH Circa 7th-6th century BC. The bow decorated with three knobs. With triangular catch plate; spring and pin. L 38 mm Ex European private collection, acquired on the German art market between 2002-2009.

35



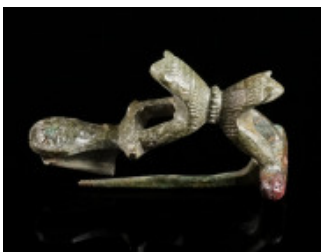
214 AN IRON AGE/EASTERN CELTIC BRONZE BOW BROOCH Circa 4th-3rd century BC. A decorated Thracian Type/La Tène Type brooch. Made of one piece with spring and pin; the foot terminates in a faceted conical knob. L 38 mm Ex European private collection, acquired on the German art market between 2002-2009.

35



215 A PHRYGIAN BRONZE BROOCH Cica 7th-6th century BC. A Phrygian brooch with an arched, profiled bow and a catch plate in the form of a hand; with spiral and pin. Wonderful blue-green patina. L 33 mm Austrian private collection, acquired on the European art market.

100



216 A ROMAN BRONZE LION BROOCH Circa 1st-2nd century AD. A fine bow brooch composed of two elaborately worked lion protomes; the foot features a Celtic-style head in relief. With hinged pin. Rare and in excellent condition! L 32 mm Ex Austrian art market. Acquired on the UK art market.

350



217 A ROMAN BRONZE LION BROOCH Circa 1st-2nd century AD. The bow in the form of a well-modelled lion; fantail foot with incised decoration. With spring and pin. The spring with cylindrical hood. Rare! L 32 mm Ex European private collection, acquired on the German art market between 2002-2009.

50



218 A ROMAN BRONZE COMPOSITE ENAMELLED PLATE BROOCH Circa late 1st-2nd century AD. Enamelled brooch with an intricate design. Blue and green/yellow enamel. With hinged pin. Rare, especially in this condition! L 38 mm Austrian private collection, acquired on the European art market.

80



219 A ROMAN BRONZE SWASTIKA BROOCH WITH HORSE HEADS Circa 2nd-3rd century AD. The eyes indicated with ring-and-dot, further ring-and-dot motifs on the body. With hinged pin and high catch plate. L 36 mm Austrian private collection, acquired in the 1980s-90s.

50



220 A ROMAN BRONZE RING BROOCH WITH DOLPHINS Circa 3rd-4th century AD. Late Roman ring brooch with two stylised dolphins in openwork design. Minor remains of original tinning; the original iron pin is not preserved. Small restored crack/break. L 69 mm Ex European private collection, acquired on the UK art market before 2000.

50



221 A ROMAN BRONZE ENAMELLED TUTULUS BROOCH Circa late 1st-2nd century AD. A finely modelled and decorated, enamelled and tinned disk brooch with raised conical boss; triangular enamel inlays in orange and red. Edge chipped; hinged, pin missing. L 28 mm (max. diameter) Austrian private collection, acquired in the 1980s-90s.

100



222 A ROMAN KNEE BROOCH WITH HORSE HEAD Circa 2nd-3rd century AD. Knee brooch with foot terminating in a small, stylised horse head. Spring and pin missing. L 32 mm Ex European private collection, acquired on the German art market before 2000.

35



223 A LATE ANTIQUE BRONZE BIRD BROOCH Circa 4th-6th century AD. Unfinished bird brooch with swept back wings (cast blank). Rare! L 42 mm Ex European private collection, acquired on the German art market between 2002-2009.

35



224 A LATE ANTIQUE BRONZE BIRD BROOCH Circa 4th-6th century AD. Brooch in the form of a bird with swept back wings and fantail; incised decoration. With hinged pin. L 32 mm Ex Austrian private collection D. B., acquired in the 1980s-90s.

50



225 LATE ANTIQUE/BYZANTINE BRONZE BROOCH WITH BENT FOOT Circa 5th-6th century AD. Bow brooch with folded foot (umgeschlagenem Fuß) and incised decoration; the foot is decorated with a cross. With spring and pin made of iron and bronze, most of the pin missing. L 43 mm Austrian private collection, acquired in the 1980s-90s.

30



226 A MIGRATION PERIOD BRONZE BROOCH Circa 5th century AD. Bow brooch with triangular head plate and lozenge-shaped foot; decorated with chip carved ornament. Spring and pin made of iron not preserved. L 59 mm Austrian private collection, acquired in the 1980s-90s.

50



227 TWO OSTROGOTHIC BRONZE BROOCHES Circa 5th-6th century AD. Both with semi-circular head plate with five knobs and lozenge-shaped foot. The larger brooch originally silvered (or base silver), decorated with chip carved ornament and two stylised eagle heads; spring made of bronze preserved, pin missing. The smaller brooch plain, spring and pin not preserved. L 45 mm, and L 35 mm Austrian private collection, acquired in the 1980s-90s.

80



228 A LARGE MIGRATION PERIOD BRONZE BROOCH Circa 6th-7th century AD. So-called 'Slavic brooch'. Bow brooch with semi-circular head plate with five knobs and triangular foot. Head plate and foot richly decorated with punched ring-and-dot motifs; the foot terminates in either a stylised human head or an animal head. Remains of the iron spring preserved, pin missing; somewhat bent and patina slightly damaged in places. L 97 mm Austrian private collection, acquired in the 1980s-90s.

150



229 TWO ROMAN BRONZE BROOCHES Circa 2nd-3rd century AD. An openwork disk brooch with an abstract geometric motif and a tinned double knee brooch. Both hinged, pins not preserved. L 39 mm (max. diameter), and L 28 mm Ex European private collection, acquired on the German art market between 2002-2009.

50



230 TWO ROMAN BRONZE BROOCHES Circa 1st-2nd century AD. A star shaped disk brooch with remains of enamel. And a small hare brooch with some tinning and niello; ear broken. Both hinged, pins not preserved. Diameter 40 mm, and L 21 mm Ex European private collection, acquired on the German art market between 2002-2009.

50



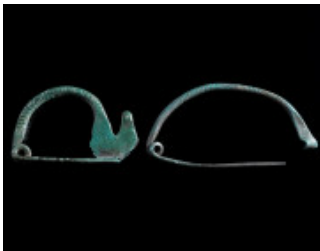
231 TWO LATE ANTIQUE BRONZE BIRD BROOCHES Circa 4th-6th century AD. One with swept back wings and fantail; the other with folded wings. Pins restored. L 38 mm, and L 37 mm Ex European private collection, acquired on the German art market between 2002-2009.

70



232 TWO ROMAN BRONZE PINCER BROOCHES Circa 2nd-3rd century AD. Both with rounded bow with two mouth-like openings, hinged together by a rivet. The larger brooch decorated. Pin of the smaller brooch possibly repaired. Rare! L 85 mm, and L 57 mm Ex private collection, acquired on the German art market before 2000.

70



233 TWO GREEK-TYPE BOW BROOCHES Circa 6th-5th century BC. Both with ribbed bow. With spiral and pin. Catch plate of the smaller brooch slightly damaged. L 58 mm, and L 43 mm Ex European private collection, acquired on the German art market between 2002-2009.

50



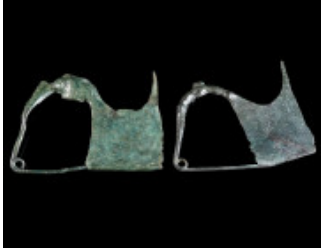
234 TWO ANCIENT BOW BROOCHES Circa 5th-4th century BC, and 4th-3rd century BC. A Greek-Type silver brooch, and an Iron Age/Eastern Celtic brooch. Pin of the silver brooch not preserved. L 26 mm, and L 40 mm Ex European private collection, acquired on the German art market between 2002-2009.

50



235 A GROUP OF FOUR LA TÈNE STYLE BRONZE BROOCHES Circa 4th-1st century BC. Three decorated, small Early-Middle La Tène types, and a plainer Late La Tène type. All without pin/spring and pin, and two with damaged foot. Rare! L 30-47 mm Ex European private collection, acquired on the UK art market before 2000.

50



236 TWO GREEK-TYPE BOW BROOCHES Circa 7th-6th century BC. Both with large catch plate. Catch plate of one brooch repaired, and pins probably reattached/repared. L 67 mm, and L 68 mm Ex private collection, acquired on the German art market before 2000.

80



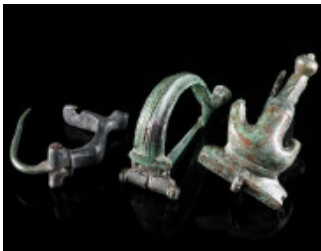
237 A PHRYGIAN AND A CELTIBERIAN BRONZE BROOCH Circa 6th century BC, and 3rd-2nd century BC. A Phrygian bow brooch with spring and pin, and a Celtiberian ring-shaped brooch with an arched bow. L 24 mm, and L 20 mm Ex European private collection, acquired on the German art market between 2002-2009.

50



238 A GROUP OF THREE ROMAN BRONZE BROOCHES Circa 2nd-3rd century AD. A strongly profiled brooch, a knee brooch, and a bow brooch; two with spring and pin, one with hinged pin. L 34-60 mm Ex European private collection, acquired on the German art market between 2002-2009.

45



239 A GROUP OF THREE ROMAN BRONZE BROOCHES Circa 1st-3rd century AD. A knee brooch, an Aucissa brooch, and an anchor-type brooch. All with hinged pin. L 33-48 mm Ex European private collection, acquired on the German art market between 2002-2009.

45



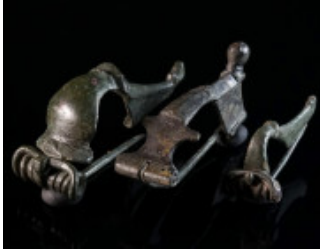
240 TWO ROMAN BRONZE WOLF HEAD BROOCHES Circa 2nd century AD. Two bow brooches decorated with a stylised wolf's head and a punched design; both with hinged pins. L 71 mm, and L 73 mm Ex European private collection, acquired on the German art market between 2002-2009.

45



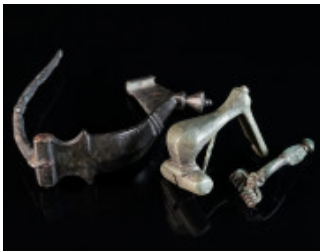
241 TWO LATE ROMAN BRONZE BROOCHES Circa 3rd-4th century AD. A bow brooch, and a decorated crossbow brooch. Pin/spring and pin of both brooches and central knob of the crossbow brooch ancient but probably not belonging. L 41 mm, and L 58 mm Ex European private collection, acquired on the German art market between 2002-2009.

50



242 A GROUP OF THREE ROMAN BRONZE BROOCHES Circa 1st-3rd century AD. Two strongly profiled brooches, and a bow brooch; two with spring and pin, one with hinged pin. L 33-52 mm Ex European private collection, acquired on the German art market between 2002-2009.

45



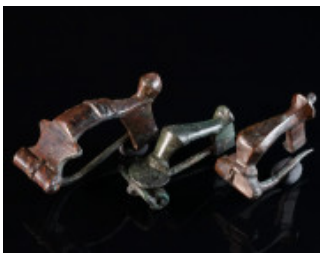
243 A GROUP OF THREE ROMAN BRONZE BROOCHES Circa 1st-3rd century AD. A bow brooch, a faceted knee brooch, and a small, profiled brooch. Two with hinged pin, one with spring and pin. Spring and pin of the small, profiled brooch restored. L 30-58 mm Ex European private collection, acquired on the German art market between 2002-2009.

45



244 A GROUP OF THREE ROMAN BRONZE BROOCHES Circa 1st-3rd century AD. Two strongly profiled brooches, and a bow brooch with long spring. All with spring and pin. Catch plate of the bow brooch probably repaired. L 37-52 mm Ex European private collection, acquired on the German art market between 2002-2009.

45



245 A GROUP OF THREE ROMAN BRONZE BROOCHES Circa 2nd-3rd century AD. Two knee brooches, and a bow brooch; two with hinged pin, one with spring and pin. L 28-33 mm Ex European private collection, acquired on the German art market between 2002-2009.

45



246 A SASANIAN CARNELIAN AGATE STAMP SEAL WITH A ZEBU Circa 3rd-7th century AD. Stamp seal with a zebu to right and a star above; the centre perforated with a hole for suspension. Diameter 19 mm (max.) Austrian private collection, acquired from Münzhandlung Sonntag; before, Künker am Dom.

80



247 A SASANIAN AGATE STAMP SEAL WITH AN OFFICIAL Circa 3rd-7th century AD. Stamp seal with the bust of a bearded male official with headgear to right; the centre perforated with a hole for suspension. Diameter 15 mm Austrian private collection, acquired from Münzhandlung Sonntag; before, Künker am Dom.

80



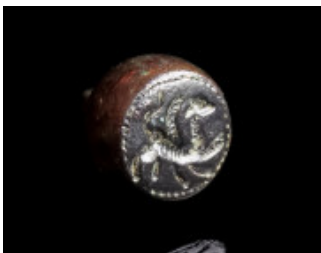
248 A SMALL SASANIAN CHALCEDONY STAMP SEAL WITH A BIRD Circa 3rd-7th century AD. Stamp seal with a bird, two crescents, and an inscription; the centre perforated with a hole for suspension. Diameter 9 mm Austrian private collection, acquired from Münzhandlung Sonntag; before, Künker am Dom.

80



249 A BYZANTINE BRONZE STAMP SEAL WITH INSCRIPTION Circa 11th-12th century AD. Conical-shaped seal matrix with suspension loop. The inscription reads +K(YPI)E BOHΘH followed by the name of the owner ('Lord, help ...'). The 'R' in the first line is an 'open Beta', frequently used in the 11th-12th century AD. Diameter 18 mm (max.), H 16 mm Austrian private collection, acquired on the European art market.

50



250 A BYZANTINE BRONZE STAMP SEAL WITH A GRIFFIN Circa 8th-10th century AD. Domed seal matrix with suspension loop depicting a griffin. Diameter 11 mm, H 17 mm Ex European private collection, acquired on the German art market before 2000.

70



251 A BYZANTINE AND AN EARLY ISLAMIC BRONZE STAMP SEAL Circa 8th-10th century AD, and 14th-15th century AD. A Byzantine seal matrix with suspension loop depicting an eagle; and an early Islamic/Ottoman seal matrix with calligraphy. L x W = 11 x 10 mm, H 23 mm; Diameter 15 mm, H 30 mm Ex European private collection, acquired on the German art market between 2002-2009.

80



252 A BYZANTINE BRONZE BREAD STAMP Circa 5th-8th century AD. Oval in form, with an abbreviated Greek inscription and a small, pierced handle at the back. L 36 mm, W 30 mm Ex private collection, acquired on the German art market before 2000.

75



253 A BYZANTINE BRONZE BREAD STAMP Circa 5th-8th century AD. Rhomboid in form, with an abbreviated Greek inscription and a small strap loop/handle at the back. L 35 mm, W 29 mm Ex private collection, acquired on the German art market before 2000.

75



254 A CRESCENT-SHAPED BYZANTINE BRONZE BREAD STAMP Circa 5th-8th century AD. With an abbreviated Greek inscription and a solid loop handle at the back. L 39 mm, W 34 mm Ex private collection, acquired on the German art market before 2000.

75



255 A BYZANTINE BRONZE BREAD STAMP Circa 5th-8th century AD. Rectangular in form, with an abbreviated Greek inscription and a small strap loop/handle at the back. L 42 mm, W 21 mm Ex private collection, acquired on the German art market before 2000.

75



256 A BYZANTINE BRONZE BREAD STAMP Circa 5th-8th century AD. Made of cut pieces of bronze sheet, soldered together; with an abbreviated Greek inscription. Handle missing. L 41 mm, W 35 mm Ex private collection, acquired on the German art market before 2000.

75



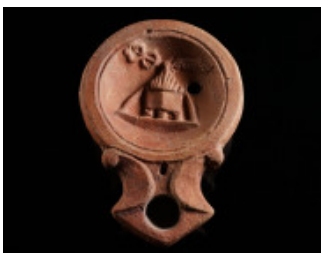
257 A STAR-SHAPED BYZANTINE BRONZE BREAD STAMP Circa 5th-8th century AD. With an abbreviated Greek inscription and a solid strap loop with a ring at the back. One pointed end damaged. Diameter 41 mm (max.) Ex private collection, acquired on the German art market before 2000.

75



258 A ROMAN TERRACOTTA FACTORY OIL LAMP WITH SILENUS Circa 1st-2nd century AD. A fine factory oil lamp ('Firmalampe') with outward sloping shoulders and a protruding rounded nozzle; the flat discus decorated with a head of Silenus. The flat base marked by concentric circles enclosing the maker's mark 'FESTI'. Loeschke Type IX. L 78 mm Ex European private collection, acquired on the German art market before 2000.

150



259 A ROMAN TERRACOTTA OIL LAMP WITH A CISTA/ALTAR Circa 1st-2nd century AD. Fine oil lamp with rounded body, concave discus, and triangular voluted nozzle; the discus is decorated with a cista (or a flaming altar), a caduceus leaning to left, and a palm branch. Loeschke Type I. L 86 mm Ex European private collection, acquired on the German art market before 2000.

150



260 A ROMAN BRONZE FIGURAL PADLOCK WITH A FACE Circa 2nd-4th century AD. The cover in the shape of a stylised face with beard (?), decorated with ring-and-dot motifs. The lock box and the 'hoop' or shackle section on the back of the lock is not preserved. H 35 mm, W 35 mm Ex private collection, acquired on the German art market before 2000.

80



261 A ROMAN BRONZE KEY RING Circa 1st-3rd century AD. With a short projecting shank and an offset bit. L 30 mm Ex European private collection, acquired on the German art market between 2002-2009.

35



262 TWO ROMAN BRONZE KEYS Circa 1st-3rd century AD. One with a head with loop and a long shank with offset bit; the other a key ring with short projecting shank and offset bit. L 49 mm, and L 36 mm Ex European private collection, acquired on the German art market between 2002-2009.

50



263 TWO BYZANTINE BRONZE KEYS Circa 5th-7th century AD. Both with pierced head, the larger key with a long, hollow shank, the smaller with a short, hollow shank. The larger piece slightly bent (and part of the head missing?) L 51 mm, and L 35 mm Ex European private collection, acquired on the German art market between 2002-2009.

50



264 A BYZANTINE BRONZE FOLDING KEY Circa 5th-6th century AD. With hollow shank and key bit in openwork; attached to a ring. L 48 mm (total) Ex European private collection, acquired on the German art market before 2000.

35



265 A GROUP OF THREE BYZANTINE BRONZE FIGURAL PADLOCKS Circa 6th-9th century AD. Three halves of padlocks in the shape of animals: a goat, a saddled horse decorated with ring-and-dot motifs (head broken off), and another animal. L 50 mm, L 30 mm, and L 40 mm Ex private collection, acquired on the German art market before 2000.

90



266 A NORIC-PANNONIAN BELT BUCKLE Circa 1st-early 2nd century AD. Rectangular buckle with two stylised bird (duck) heads. A few scratches on the surface. Garbsch Type G 2c. L 64 mm, H 42 mm Ex European private collection, acquired on the UK art market before 2000.

50



267 A LARGE ROMAN BRONZE OPENWORK MOUNT Circa 1st-3rd century AD. Circular mount with pelta-shaped decoration. With some remains of toned tinning. Possibly part of a horse harness. Diameter 93 mm Austrian private collection, acquired in the 1980s-90s.

120



268 A ROMAN BRONZE CHEST HANDLE Circa 1st-3rd century AD. Decorated and profiled handle with remains of the iron mountings. L 11.8 cm Austrian private collection, acquired in the 1980s-90s.

70



269 TWO ROMAN BRONZE APPLIQUES Circa 2nd-3rd century AD. An openwork belt fitting worked in Romano-Celtic 'Trumpet-style', and a shield-boss-shaped circular applique. L 48 mm, and Diameter 43 mm Ex European private collection, acquired on the German art market before 2000.

40



270 A GROUP OF FIVE ROMAN BRONZE BELT BUCKLES Circa 2nd century AD. Five openwork military belt buckles. L 33-48 mm Ex European private collection, acquired on the German art market before 2000.

40



271 A GROUP OF THREE ROMAN BRONZE OPENWORK BELT FITTINGS Circa 2nd-3rd century AD. Two with a pelta-shaped design, and one with stylised horse heads. L 39-65 mm Ex European private collection, acquired on the German art market between 2002-2009.

45



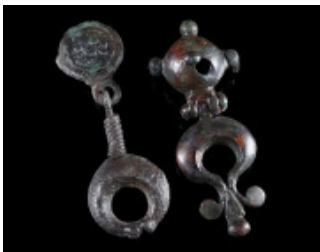
272 A GROUP OF FIVE ROMAN BRONZE BELT FITTINGS Circa 1st century AD, and 4th-5th century AD. An early Roman fitting with remains of tin plating, and four late Roman fittings, two of which are decorated with stylised horse heads. L 31-46 mm Ex European private collection, acquired on the German art market between 2002-2009.

50



273 A BYZANTINE BRONZE BELT BUCKLE WITH A GRIFFIN Circa 9th-11th century AD. Square plate from a belt-buckle; in relief, a griffin striding left; two attachment lugs at one end. H 26 mm, L 37 mm Austrian private collection, acquired on the European art market.

60



274 A ROMAN BRONZE STUD FROM A MILITARY BELT AND A FITTING Circa 1st century AD, and 2nd century AD. A stud (bulla), decorated with a head in relief and a lunula shaped pendant, from the straps of a cingulum militare (legionary belt); and a further belt fitting with a pendant. H 52 mm (total); and H 50 mm Ex European private collection, acquired on the German art market between 2002-2009.

50



275 A NORIC-PANNONIAN BELT BUCKLE Circa 1st-early 2nd century AD. Rectangular buckle with two stylised bird (duck) heads. Slightly bent and a somewhat rough surface. Garbsch Type G 2c. L 47 mm, H 37 mm Ex Austrian private collection D. B., acquired in the 1980s-90s.

40



276 A ROMAN BONE BUCKLE AND A BUTTON AND LOOP FASTENER Circa 1st-2nd century AD. Frame of a buckle and a fastener, both also known from military contexts. Incomplete. L 46 mm, and L 30 mm Ex private collection, acquired on the German art market before 2000.

30



277 A ROMAN BRONZE MOUNT WITH A DECORATED PENDANT Circa 2nd-3rd century AD. Pendant decorated with a punched design. Probably from a horse harness. H 79 mm, W 40 mm Ex Austrian private collection D. B., acquired in the 1980s-90s.

40



278 A GROUP OF THREE ROMAN BRONZE MOUNTS/FITTINGS Circa 2nd-3rd century AD, and 4th-5th century AD. Two mid-imperial openwork mounts, one with a swastika, the other pelta-shaped; and a late Roman openwork propellor-type belt fitting. Diameter/L 42-45 mm; and H 34 mm (propellor-type) Ex European private collection, acquired on the German art market between 2002-2009.

45



279 A ROMAN BRONZE APPLIQUE IN THE FORM OF AN IVY LEAF Circa 1st-3rd century AD. Solid applique in the shape of a curved ivy leaf. L 39 mm Austrian private collection, acquired on the European art market.

60



280 A GROUP OF THREE ROMAN BRONZE OPENWORK BELT FITTINGS Circa 2nd-3rd century AD. Two fittings worked in Romano-Celtic 'Trumpet-style', and a further openwork fitting. L 42-50 mm Ex European private collection, acquired on the German art market between 2002-2009.

45



281 A GROUP OF FIVE ROMAN BRONZE AMPHORA-SHAPED STRAP-ENDS Circa 4th-5th century AD. Late Roman strap-ends from military belts. L 25-46 mm Ex European private collection, acquired on the German art market between 2002-2009.

50



282 A ROMAN SILVER PENANNULAR BROOCH AND A STRAP-END Circa 1st-3rd century AD. A small Penannular/Omega brooch with a ribbed frame, and a strap-end decorated with incisions/grooves. Diameter 25 mm, and L 57 mm Ex European private collection, acquired on the German art market between 2002-2009.

50



283 A GROUP OF FOUR ROMAN BRONZE MOUNTS/FITTINGS Circa 2nd-3rd century AD. L 30-53 mm Ex European private collection, acquired on the German art market between 2002-2009.

80



284 A GROUP OF THREE BYZANTINE BRONZE BELT BUCKLES Circa 6th-7th century AD. A small buckle with a cruciform plate, and two buckles with an openwork plate. L 30-76 mm Ex European private collection, acquired on the German art market between 2002-2009.

45



285 A GROUP OF THREE LATE ANTIQUE/BYZANTINE BRONZE BELT BUCKLES Circa 5th-7th century AD. A small buckle with a cruciform plate, a buckle with a decorated rectangular plate, and a further small buckle. L 30-45 mm Ex European private collection, acquired on the German art market between 2002-2009.

45



286 A GROUP OF FIVE LATE ROMAN BRONZE PROPELLOR-TYPE FITTINGS Circa 4th-5th century AD. Four decorated propellor-type belt fittings of different sizes (two with studs preserved), and a propellor-type fitting/mount with two bronze nails. L 32-58 mm Ex European private collection, acquired on the German art market between 2002-2009.

50



287 A ROMAN BRONZE BUCKLE AND TWO BYZANTINE BELT BUCKLES Circa 3rd-4th century AD, and 6th-7th century AD. A small Roman bronze buckle; and two Byzantine belt buckles: one with decorated cruciform plate, the other with lyre-shaped plate and a medallion with cruciform monogram. L 25 mm; and L 41 and 45 mm (Byzantine buckles) Ex European private collection, acquired on the German art market between 2002-2009.

50



288 A GROUP OF THREE LATE ANTIQUE/BYZANTINE BRONZE BELT BUCKLES Circa 5th-7th century AD. A small Byzantine buckle with a cruciform plate; and two Late Antique decorated buckles. L 30 mm; and W 36 mm each (two Late Antique buckles) Ex European private collection, acquired on the German art market between 2002-2009.

45



289 A GROUP OF THREE LATE ANTIQUE/BYZANTINE BRONZE BELT BUCKLES Circa 5th-7th century AD. Three buckles of different size and design. Plate of one buckle slightly damaged. L 44-55 mm Ex European private collection, acquired on the German art market between 2002-2009.

45



290 TWO ROMAN BRONZE ATTACHMENTS Circa 2nd-3rd century AD. The larger piece, a decorated massive handle attachment (loop broken) from a situla/bucket; the other piece, a decorated mount with a rectangular (strap) loop for attachment on the back. W 74 mm; and W 47 mm Ex private collection, acquired on the German art market before 2000.

80



291 A BRONZE FASTENER AND THREE S-SHAPED BELT HOOKS Circa 12th-14th century AD, and 16th-17th century AD. A medieval button and loop fastener with star decoration; and three post medieval S-shaped bronze buckles with stylised animal heads. L 39 mm; and L 34-45 mm (total length) Ex European private collection, acquired on the German art market between 2002-2009.

50



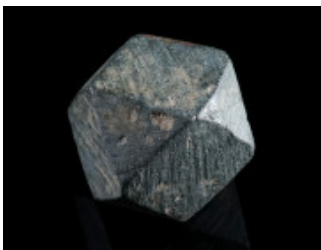
292 A SET OF SEVEN ANTIQUE SILVER FIGURAL BELT FITTINGS Circa 16th-18th century AD (?). All worked in repoussé, decorated with figural and floral motifs. With rectangular strap loops attached to the back. Some earthen deposits, minor damage and strap loops bent. Precise period and culture unknown. L 17-20 mm, the large piece L 44 mm Austrian private collection, acquired on the European art market.

280



293 A BYZANTINE BRONZE COMMERCIAL WEIGHT OF ONE OUNCE Circa 5th-7th century AD. Square weight with letters inlaid in silver. The letters ΓΑ stand for 1 ounce; above an abbreviated inscription. L 20 x 20 mm; Weight 26.59 g Austrian private collection, acquired on the European art market.

80



294 AN ISLAMIC BRONZE WEIGHT Circa 10th-14th century AD. Weight in the form of a polyhedron, with a punched sun-shaped mark on one side. L 16-17 mm; Weight 32.15 g Austrian private collection, acquired in the 1980s-90s.

30



295 A FLAT ROMAN GLASS BEAD WITH MEDUSA Circa 3rd-4th century AD. Opaque dark glass (black in appearance) spacer bead with a head of Medusa in relief; moulded and pierced. L 14 mm Ex European private collection, acquired on the German art market between 2002-2009.

50



296 A GROUP OF FIVE ANCIENT GLASS BEADS AND A GAMING PIECE Circa 6th century BC - 1st century AD. Three 'black' glass beads with coloured 'dots' (glass frits), a feather bead, and a melon bead with longitudinal ribs; the flat gaming piece made of marbled glass. Diameter 14-16 mm, L 18 mm (feather bead); Diameter 22 mm (gaming piece) Ex private collection, acquired on the German art market before 2000.

50



297 FIVE ANCIENT GLASS BEADS Circa 6th-2nd century BC. One eye bead, the eyes with blue centres; another eye bead, with additional threads of white glass; two beads with coloured 'dots' (glass frits); and a large feather bead with a yellow feather pattern. Diameter 15-16 mm; L 28 mm (feather bead) Ex private collection, acquired on the German art market before 2000.

50



298 A GROUP OF SEVEN ANCIENT BEADS Circa 1st-4th century AD. Three hexagonal emerald beads, a hexagonal aventurine quartz bead, a hexagonal bone bead (green stained by copper), a carnelian bead, and a bead made of mother-of-pearl. L 5-16 mm Ex private collection, acquired on the German art market before 2000.

50



299 A GROUP OF FOURTEEN SMALL GLASS OBJECTS Circa 4th century BC - 10th century AD (?). Including 11 glass beads of different size, shape, and date. Length/Diameter 7-35 mm Ex private collection, acquired on the German art market before 2000.

50



300 A LATE ROMAN/BYZANTINE GLASS BRACELET Circa 4th-8th century AD. Opaque dark glass (black in appearance); semicircular in section with flat inner side. Diameter 77 mm Austrian private collection, acquired on the European art market.

70



301 A LATE ROMAN/BYZANTINE GLASS BRACELET Circa 4th-8th century AD. Opaque dark glass (black in appearance); semicircular in section with flat inner side. Diameter 57 mm Austrian private collection, acquired on the European art market.

50



302 TWO LATE ROMAN/EARLY BYZANTINE LIGULAE Circa 4th-7th century AD. Two decorated pin-like medical instruments or cosmetic spoons with a small scoop at one end (ligula). L 10.3 cm, and L 10.7 cm Ex European private collection, acquired on the German art market before 2000.

50



303 A PAIR OF LATE ANTIQUE/BYZANTINE BRONZE TWEEZERS Circa 4th-7th century AD. Cosmetic tweezers decorated with a series of grooves and incised lines. L 58 mm Ex European private collection, acquired on the German art market before 2000.

30



304 TWO PAIRS OF LATE ANTIQUE/BYZANTINE BRONZE TWEEZERS Circa 4th-7th century AD. Cosmetic tweezers decorated with a series of incised lines/crosses and punched dots. L 48 mm, and L 70 mm Ex European private collection, acquired on the German art market between 2002-2009.

40



305 TWO PAIRS OF BYZANTINE BRONZE TWEEZERS Circa 5th-7th century AD. Cosmetic tweezers decorated with a series of incised lines and ring-and-dot motifs. L 56 mm, and L 71 mm Ex European private collection, acquired on the German art market between 2002-2009.

40



306 TWO PAIRS OF BYZANTINE BRONZE TWEEZERS Circa 5th-7th century AD. Cosmetic tweezers. The large piece elaborately decorated with a cross (pattée) with ring-and-dot motifs and incised crossed lines; the other with a series of incised lines/crosses. L 82 mm, and L 50 mm Ex European private collection, acquired on the German art market between 2002-2009.

40



307 A ROMAN IRON STYLUS Circa 1st-3rd century AD. A well-preserved iron stylus with a pointed end for scratching the characters upon the wax, and a flattened end to obliterate the writing and to smoothen the surface of the tablet again. L 11.6 cm From the Estate of the late Diana & Gospatric Home, Lily Farm, Buckinghamshire.

30



308 A DECORATED BYZANTINE BRONZE DISTAFF Circa 6th-7th century AD. Distaff (spinning tool) with a plain ring with grooves at the base and a stylised bird decorated with ring-and-dot motifs and incised lines on the top. Rod broken and repaired in the middle. H 21.3 cm Ex private collection, acquired on the German art market before 2000.

50



309 A ROMAN BRONZE HAIRPIN Circa 1st-3rd century AD. A hairpin with a profiled head with loop. L 86 mm Ex Austrian private collection D. B., acquired in the 1980s-90s.

30



310 TWO BYZANTINE BRONZE THIMBLES Circa 9th-12th century AD. Two thimbles with an open top and punched dimples. Diameter 21 mm (each) Ex European private collection, acquired on the German art market between 2002-2009.

50



311 A GROUP OF FOUR ROMAN BONE HAIRPINS Circa 1st-4th century AD. The head of the largest pin is shaped in the form of a hand (three fingers broken), the others with a round knob or a plain head. Pointed ends slightly broken. L 81-132 mm Ex private collection, acquired on the German art market before 2000.

40



312 A GROUP OF FOUR ROMAN BONE TOOLS Circa 1st-4th century AD. A broken tool terminating in the hoof of a goat, a sewing needle (pointed end broken), an awl, and a (broken) handle of a tool. L 71-114 mm Ex private collection, acquired on the German art market before 2000.

30



313 A GROUP OF FIVE ROMAN BONE HAIRPINS Circa 1st-4th century AD. With plain or decorated heads; pointed ends mostly broken, or broken and resharpened. L 55-88 mm Ex private collection, acquired on the German art market before 2000.

30



314 A ROMAN BONE INSTRUMENT/TOOL Circa 1st-4th century AD. An instrument of uncertain function with drilled marks on the top; possibly a weaving tool. L 14.8 cm Ex private collection, acquired on the German art market before 2000.

30



315 A ROMAN BRONZE HAIRPIN AND TWO INSTRUMENTS/TOOLS Circa 1st-3rd century AD. A hairpin with decorated head, a sewing needle, and an instrument with a pointed and a flat rounded end (possibly a ligula?). L 99-145 mm From the Estate of the late Diana & Gospatric Home, Lily Farm, Buckinghamshire.

30



316 A ROMAN BRONZE LID/UPPER DISK OF AN INKWELL Circa 1st-2nd century AD. An intricately decorated lid of an inkwell with inlaid silver bands of running scroll and ivy tendril, separated by plain bands. Silver inlays partly preserved. Diameter 30 mm Ex European private collection, acquired on the German art market between 2002-2009.

50



317 A SMALL ROMAN BRONZE TABULA ANSATA WITH INSCRIPTION Circa 1st-3rd century AD. Plaque made of bronze sheet with a punched, abbreviated inscription. Probably a name tag from a military context, indicating the abbreviated owner's name of a piece of equipment. Two piercings for attachment. W 50 mm, H 39 mm Austrian private collection, acquired in the 1980s-90s.

50



318 A ROMAN LEAD COMMERCIAL TAG WITH CURSIVE WRITING Circa 1st-4th century AD. A thin, rhombic lead tag (tessera) with cursive inscription on both sides. These commercial tags were attached to the merchandise with a cord or metal wire. They frequently indicated in an abbreviated form the name, quantity, and price of goods. Pierced for attachment. H 30 mm, W 26 mm Austrian private collection, acquired on the European art market.

70



319 A ROMAN INSCRIPTION REUSED AS A GAMING PIECE Circa 1st-4th century AD. Small part of a bronze tablet with the letter F and the remains of a further letter, probably 1st-2nd century AD, cut out and reused as a gaming piece in later times. Diameter 20 mm (max.) Ex European private collection, acquired on the German art market before 2000.

35



320 A GERMANIC BRONZE SPUR Circa 2nd-3rd century AD. Prick spur with central goad and side arms with T-shaped lugs. L 42 mm, W 60 mm Ex Austrian private collection D. B., acquired in the 1980s-90s.

50



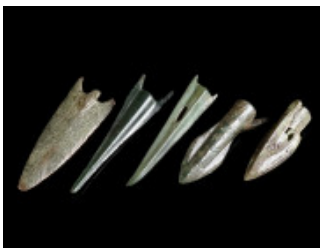
321 TWO IRON AGE BRONZE ARROWHEADS Circa 1st half of 1st millennium BC. Two barbed arrowheads with tang for fitting onto a wooden shaft. L 88-96 mm Ex European private collection, acquired on the German art market before 2000.

50



322 A GROUP OF FOUR ANCIENT BRONZE ARROWHEADS Circa 1st millennium BC. The two long barbed arrowheads with tang probably Iron Age, the two smaller probably from the Greek World. L 61-115 mm Ex European private collection, acquired on the German art market before 2000.

50



323 A GROUP OF FIVE BRONZE ARROWHEADS FROM THE GREEK WORLD Circa 6th-3rd century BC. Including three 'Scythian' arrowheads, that were in fact used by different tribes and cultures. Four with socket, one with tang. L 34-54 mm Ex European private collection, acquired on the German art market before 2000.

45



324 A GROUP OF THREE MEDIEVAL IRON ARROWHEADS Circa 10th-14th century AD. Two swallowtail arrowheads, and one with forked head; all with tang. L 70-103 mm Ex European private collection, acquired on the German art market before 2000.

50



325 TWO MEDIEVAL IRON SWALLOWTAIL ARROWHEADS Circa 10th-14th century AD. Both socketed; the larger arrowhead with twisted neck. L 77 mm, and L 123 mm Ex European private collection, acquired on the German art market before 2000.

40



326 A GROUP OF THREE MEDIEVAL IRON ARROWHEADS Circa 10th-14th century AD. Three leaf-shaped arrowheads, all socketed. L 73-131 mm Ex European private collection, acquired on the German art market before 2000.

40



327 A GROUP OF THREE MEDIEVAL IRON ARROWHEADS Circa 10th-14th century AD. Three leaf-shaped arrowheads, all socketed. L 67-127 mm Ex European private collection, acquired on the German art market before 2000.

40



328 A GROUP OF THREE MEDIEVAL IRON SWALLOWTAIL ARROWHEADS Circa 10th-14th century AD. Two socketed arrowheads, one with tang. L 75-103 mm Ex European private collection, acquired on the German art market before 2000.

50



329 A GROUP OF FIVE MEDIEVAL IRON ARROWHEADS Circa 10th-14th century AD. Four leaf-shaped, and a barbed arrowhead; all with tang. L 61-108 mm Ex European private collection, acquired on the German art market before 2000.

50



330 TWO MEDIEVAL IRON TRILOBATE ARROWHEADS Circa 6th-8th century AD, and 10th-14th century AD. A large Avar arrowhead with three wide blades; and a narrow, long, later medieval trilobate arrowhead; both with tang. L 11.9 cm; and L 13.3 cm Ex European private collection, acquired on the German art market before 2000.

50



331 A GROUP OF THREE AVAR IRON TRILOBATE ARROWHEADS Circa 6th-8th century AD. Three small trilobate arrowheads; all with tang. L 59-60 mm Ex European private collection, acquired on the German art market before 2000.

50



332 A GROUP OF FIVE MEDIEVAL IRON ARROWHEADS Circa 10th-14th century AD. With different body/head shapes; one with socket (possibly a tool?) L 67-85 mm Ex European private collection, acquired on the German art market between 2002-2009.

50



333 A GROUP OF FOUR MEDIEVAL IRON ARROWHEADS AND A TOOL Circa 10th-14th century AD. Four arrowheads with different body/head shapes; and a tool (possibly an awl?) L 69-82 mm Ex European private collection, acquired on the German art market between 2002-2009.

50



334 TWO HEAVY MEDIEVAL IRON CROSSBOW BOLTS Circa 14th-15th century AD. Both heads four-sided with sharp pyramid-shaped tips; one with socket, the other with tang (bent, and tip broken). L 91 mm (socketed), and L 83 mm (with tang) Austrian private collection, acquired on the European art market.

30



335 TWO ROMAN SILVER MINIATURE SPEARS Circa 1st-3rd century AD. Two pila, the larger piece decorated with incised lines. Probably votive offerings. Both bent, the larger piece with cracks. L 97 mm, and L 51 mm Ex European private collection, acquired on the German art market between 2002-2009.

50



336 A VERY LARGE EUROPEAN LATE BRONZE AGE TWISTED TORQUE Circa 10th-8th century BC. Twisted hoop of solid bronze, the plain tapering ends with flattened coiled terminals. Slightly bent and minor damage to patina. Diameter 27.5 cm Ex Gorny & Mosch, Munich, Auction 214 (2013), Lot 634.

150



337 A LARGE EUROPEAN LATE BRONZE AGE TWISTED TORQUE Circa 10th-8th century BC. Large twisted hoop of solid bronze, the plain tapering ends with flattened coiled terminals. Slightly bent and minor damage to patina. Diameter 24.5 cm Ex Gorny & Mosch, Munich, Auction 214 (2013), Lot 634.

150



338 A EUROPEAN LATE BRONZE AGE TWISTED TORQUE Circa 10th-8th century BC. Composed from one long piece of twisted bronze rod doubled up, the double hoop formed into a hook and loop fastener at the ends. Green patina with earthen incrustations. Diameter 21.5 cm Ex Gorny & Mosch, Munich, Auction 214 (2013), Lot 635.

150



339 A EUROPEAN LATE BRONZE AGE TWISTED TORQUE Circa 10th-8th century BC. Formed from a single twisted bronze rod, tapering towards the plain ends with hooks. Slightly bent and cracked at one spot. Green patina with earthen incrustations. Diameter 22.8 cm Ex Gorny & Mosch, Munich, Auction 214 (2013), Lot 635.

150



340 A EUROPEAN LATE BRONZE AGE TWISTED TORQUE Circa 10th-8th century BC. Formed from a single twisted bronze rod, tapering towards the plain ends. One hook at the ends preserved, the other broken. Green patina with earthen incrustations. Diameter 23.5 cm Ex Gorny & Mosch, Munich, Auction 214 (2013), Lot 635.

150



341 A EUROPEAN LATE BRONZE AGE SOCKETED AXE HEAD Circa 10th-8th century BC. Socketed and looped bronze axe with triple-banded collar. Cutting edge slightly restored. L 12 cm Austrian private collection, acquired on the European art market.

150



342 A EUROPEAN LATE BRONZE AGE SOCKETED AXE HEAD Circa 10th-8th century BC. Socketed and looped bronze axe. L 96 mm Austrian private collection, acquired on the European art market.

180



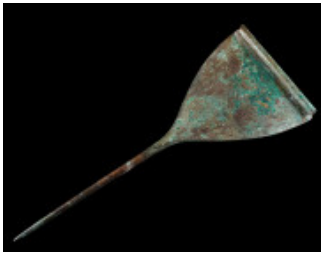
343 A EUROPEAN LATE BRONZE AGE SOCKETED AXE HEAD Circa 10th-8th century BC. Socketed and looped bronze axe with banded collar. L 10.6 cm Austrian private collection, acquired on the European art market.

150



344 A BRONZE AGE LUGGED AXE Circa 2nd millennium BC. Copper alloy axe with two strong angular lugs ('Ärmchenbeil'). With an uneven patina, chipped at the cutting edge. L 11 cm Ex private collection, acquired on the German art market before 2000.

50



345 A BRONZE AGE RACQUET PIN Koban culture, circa 12th-8th century BC. Bronze dress pin with large flat head with coiled end ('Rudernadel'). 16.7 cm Ex Ketos Auction 4, Lot 272. Austrian private collection, acquired on the European art market.

140



346 A DECORATED EUROPEAN LATE BRONZE AGE BRACELET Circa 10th-8th century BC. Bronze bracelet with an elaborate, incised geometric decoration and a beautiful patina. Diameter 75 mm (max.) Austrian private collection, acquired on the European art market.

150



347 A EUROPEAN LATE BRONZE AGE BRACELET Circa 10th-8th century BC. Small bronze bracelet with a beautiful green patina. Diameter 59 mm Austrian private collection, acquired on the European art market.

50



348 A EUROPEAN LATE BRONZE AGE BRACELET Circa 10th-8th century BC. Undecorated bronze bracelet with minor (earthen) deposits. Diameter 97 mm Austrian private collection, acquired on the European art market.

50



349 A EUROPEAN LATE BRONZE AGE BRACELET Circa 10th-8th century BC. Formed from a twisted bronze rod, tapering towards the plain ends; somewhat bent. Beautiful green patina. Diameter 78 mm Austrian private collection, acquired on the European art market.

90



350 A DECORATED EUROPEAN LATE BRONZE AGE BRACELET Circa 10th-8th century BC. Cast bronze bracelet with incised geometric decoration. Beautiful green patina. Diameter 87 mm Austrian private collection, acquired on the European art market.

90



351 A EUROPEAN BRONZE AGE PIN WITH SPIRAL TERMINAL Circa 12th-9th century BC. Bronze dress pin terminating in a single spiral. Somewhat bent; minor repair. Beautiful green patina. L 15 cm, Diameter of spiral 49 mm Austrian private collection, acquired on the European art market.

180



352 AN IMPRESSIVELY LARGE EUROPEAN BRONZE AGE PIN Circa 13th-12th century BC. Bronze pin with separately cast biconical head. Small part of the point broken. These large pins were most probably not intended for everyday use but may have served as part of a ceremonial costumes. L 47.2 cm Ex Gorny & Mosch, Munich, Auction 279 (2021), Lot 320. Private collection UK, before 2007.

150



353 AN IMPRESSIVELY LARGE EUROPEAN BRONZE AGE PIN Circa 13th-12th century BC. Bronze pin with separately cast biconical head. L 60.3 cm Ex Gorny & Mosch, Munich, Auction 279 (2021), Lot 321. Private collection UK, before 2007.

150



354 AN IMPRESSIVELY LARGE EUROPEAN BRONZE AGE PIN Circa 13th-12th century BC. Bronze pin with heavy separately cast biconical head. L 53.4 cm Ex Gorny & Mosch, Munich, Auction 279 (2021), Lot 320. Private collection UK, before 2007.

150



355 AN IMPRESSIVELY LARGE EUROPEAN BRONZE AGE PIN Circa 13th-12th century BC. Bronze pin with separately cast biconical head; with engraved linear decoration at the upper part of the shaft. L 48.4 cm Ex Gorny & Mosch, Munich, Auction 279 (2021), Lot 320. Private collection UK, before 2007.

150



356 AN IRON AGE/GEOMETRIC BRONZE PENDANT IN THE SHAPE OF A JUG Circa 8th-6th century BC. Solid pendant in the shape of an oinochoe with long neck and large, arching handle. H 32 mm Ex European private collection, acquired on the German art market before 2000.

50



357 A CELTIC BRONZE KNOBBED RING ('NOPPENRING') Circa 2nd-1st century BC. Ring with three groups of three knobs/globules. Diameter 28 mm Ex European private collection, acquired on the German art market before 2000.

30



358 A DECORATED CELTIC BRONZE RING AMULET WITH BIRDS Circa 2nd-1st century BC. Celtic ring pendant with four birds and incised geometric decoration. Attractive green patina with some earthen deposits. Diameter 42 mm (max.) Austrian private collection, acquired on the European art market.

120



359 A CELTIC LATE LA TENE BRONZE SWORD BELT HOOK Circa 2nd-1st century BC. Belt hook with ring and knob ('Ringgürtelhaken'). Beautiful blue-green patina, somewhat chipped. L 40 mm Austrian private collection, acquired on the European art market.

40



360 A CELTIC LATE LA TENE BRONZE SWORD BELT HOOK Circa 2nd-1st century BC. Belt hook with ring and knob ('Ringgürtelhaken'). L 27 mm Austrian private collection, acquired on the European art market.

50



361 A CELTIC MIDDLE LA TENE BRONZE MOUNT WITH DUCK HEAD Circa 3rd-2nd century BC. Plain mount with rivet in the shape of a stylised duck head. L 37 mm (max.) Austrian private collection, acquired on the European art market.

50



362 AN EGYPTIAN FAIENCE AMULET OF TAWERET (THOERIS) Late Period, 26th-30th Dynasty, 664-342 BC. A well modelled representation of the hippopotamus-headed goddess Taweret, in striding pose with arms on her sides. Pale blue faience. A loop for suspension on top of the head. Legs broken. H 42 mm Ex Gorny & Mosch, Munich. Collection W. K., Munich, acquired in the 1960s-1970s.

120



363 AN EGYPTIAN FAIENCE FIGURE OF PATAIKOS Late Period, 26th-30th Dynasty, 664-342 BC. A well modelled representation of the dwarf god Pataikos. Head topped by a scarab, a falcon on each shoulder. At the back, a winged female deity topped by a sun disc and holding a large Maat feather in each hand. Pierced for suspension on the side of the head. Broken below belly. H 42 mm Ex Gorny & Mosch, Munich. Collection W. K., Munich, acquired in the 1960s-1970s.

120



364 AN EGYPTIAN FAIENCE FIGURE OF BES Late Period, 26th-30th Dynasty, 664-342 BC. A double-sided, two-coloured faience amulet of the dwarf-god Bes. The ancient Egyptian deity Bes was worshipped as a protector of households, mothers, children, and childbirth. He later came to be regarded as the defender of everything good. Pale blue and yellow faience. Headdress missing and broken below the belly. H 37 mm Ex Gorny & Mosch, Munich. Collection W. K., Munich, acquired in the 1960s-1970s.

120



365 A SMALL EGYPTIAN LIMESTONE FIGURE OF A MONKEY New Kingdom, probably Amarna Period (circa 1353-1336 BC). A figure of a monkey possibly playing a harp. Remains of ancient colouring. Slightly broken on top. For a comparable piece see: New York, Brooklyn Museum, accession no. 16.82. H 50 mm Ex Gorny & Mosch, Munich. Collection W. K., Munich, acquired in the 1960s-1970s.

150



366 AN EGYPTIAN FAIENCE AMULET IN THE FORM OF A DJED PILLAR Late Period, 26th-30th Dynasty, 664-342 BC. The pillar-shaped symbol representing stability is associated with the creator god Ptah, and Osiris, the Egyptian god of the afterlife, the underworld, and the death. Pale blue-green faience. Left top corner broken. H 10.9 cm Ex Gorny & Mosch, Munich. Collection W. K., Munich, acquired in the 1960s-1970s.

200



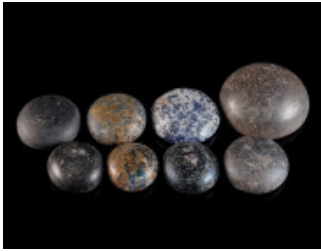
367 TWO ROMAN GAMBLING/GAMING DICES Circa 1st-3rd century AD. A bronze dice, and a bone dice; both with ring-and-dot design for the pips (eyes). L (edges) 8-10 mm each Ex European private collection, acquired on the German art market between 2002-2009.

80



368 A GROUP OF SEVEN ROMAN BONE GAMING PIECES Circa 1st-4th century AD. Different shapes, some with decoration. Diameter 16-23 mm Ex European private collection, acquired on the German art market before 2000.

45



369 A GROUP OF EIGHT ROMAN GLASS GAMING PIECES Circa 1st-4th century AD. Opaque blue glass and dark glass (black in appearance). Diameter 14-25 mm Ex European private collection, acquired on the German art market before 2000.

55



370 A GROUP OF THREE ROMANO-CELTIC RINGS Circa 1st-2nd century AD. Two large silver rings, and a small bronze ring. Diameter 40 mm each; and Diameter 20 mm Ex private collection, acquired on the German art market before 2000.

40



371 TWO ROMAN GOLD VOTIVE LEAFS Circa 2nd-3rd century AD. Made of thin sheet metal with punched linear decoration. Slightly bent. L 32 mm, and L 40 mm; Gold 1.07 g (together) Austrian private collection, acquired in the 1980s-90s.

85



372 A ROMAN LEAD VOTIVE ROUNDEL WITH TABLE OFFERINGS Circa 1st-3rd century AD. Centrally a phiale (libation bowl) surrounded by pomegranates, grapes, and further fruits. To either side of the phiale an undefined pyramidal object. The remains of two 'legs' on the side of the roundel (and a third leg completely broken off) may suggest that the object was originally a miniature tripod table. Diameter 42 mm (max.) Austrian private collection; before, German private collection.

100



373 A LATE ANTIQUE/BYZANTINE LEAD AMPHORA-SHAPED AMPULLA Circa 5th-7th century AD. A decorated miniature amphora with conical body, cylindrical neck, and angled twin handles. Probably an ampulla for sacred oil or water from a pilgrimage site. H 51 mm Ex private collection, acquired on the German art market before 2000.

30



374 A GROUP OF FOUR LATE ROMAN/BYZANTINE BRONZE BELLS Circa 4th-7th century AD. Four small conical or hemispherical bells, decorated with incised horizontal lines. Two with cast suspension loop; no clappers remain. The largest piece damaged on top. Diameter 14-31 mm, Height 12-26 mm Ex European private collection, acquired on the German art market between 2002-2009.

50



375 A GROUP OF SEVEN EARLY NEOLITHIC TOOLS Circa 6000-5000 BC. Neolithic Europe. A group of flake tools, blades, and scrapers. L 26-74 mm Ex European private collection, acquired on the German art market between 2002-2009.

50



376 A LID OF A GREEK APULIAN GLOBULAR RED-FIGURED PYXIS Circa 2nd half of 4th century BC. The hemispherical lid has a pomegranate-shaped knob and an inset rim. It is decorated with the head of a woman in profile wearing a sakkos on one side, and a palmette on the other. Handwritten collector's mark on the inside. H 75 mm, Diameter 92 mm Ex private collection Prof. Zweymüller, Vienna. Sold at Christie's London 1975. Before, Nostell Priory Collection, Yorkshire. Acquired by Charles Winn, 8th Baronet of Nostell, from Naples in 1819 and sailed for England on 9th February 1819.

350



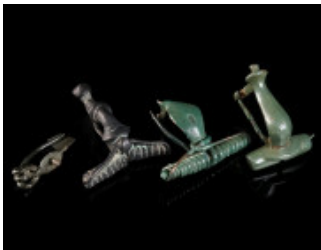
377 A ROMAN RED SLIP WARE POTTERY BOWL Circa 2nd-3rd century AD. Shallow bowl with low ring foot. Small crack on the rim with a small piece broken and reattached (glued); earthen deposits on the underside. Diameter 21.4 cm, H 35 mm Austrian private collection, acquired from Jesús Vico.

100



378 A GROUP OF FIVE EARLY ROMAN BRONZE BROOCHES Circa 1st-early 2nd century AD. Various forms, some still with niello and remains of tinning. All hinged, most pins missing. L 30-47 mm Ex European private collection, acquired on the German art market before 2000.

50



379 A GROUP OF FOUR ANCIENT BRONZE BROOCHES Circa 1st century BC - 3rd century AD. Mostly Roman; various forms. With spring and pin or hinged pin. L 22-32 mm Ex European private collection, acquired on the German art market before 2000.

50



380 A GROUP OF SIX ROMAN BRONZE BROOCHES Circa 1st-3rd century AD. Various forms (three knee brooches, two strongly profiled brooches, and a trumpet brooch). Most springs and all pins missing; one brooch hinged. L 29-54 mm Ex European private collection, acquired on the German art market before 2000.

50



381 A GROUP OF FOUR ROMAN BRONZE BROOCHES Circa late 1st-2nd century AD. Three Wolf Head brooches, and an Aucissa-type brooch. All hinged, pins missing. L 61-77 mm Ex European private collection, acquired on the German art market before 2000.

50



382 A GROUP OF SIX ROMAN BRONZE BROOCHES Circa 2nd-3rd century AD. Various forms (four knee brooches, a trumpet brooch, and a Noric-Pannonian brooch with two knobs). Most springs and all pins missing; one hinged. L 25-58 mm Ex European private collection, acquired on the German art market before 2000.

50



383 A GROUP OF THREE BYZANTINE BRONZE BROOCHES WITH BENT FOOT Circa 5th-6th century AD. Bow brooches with folded foot (umgeschlagenem Fuß) and incised decoration; one with a cross. Most springs and all pins made of iron missing. L 44-56 mm Ex European private collection, acquired on the German art market before 2000.

50



384 A GROUP OF SIX BYZANTINE BRONZE BROOCHES WITH BENT FOOT Circa 6th-7th century AD. Cast bow brooches with folded foot (umgeschlagenem Fuß), mostly with incised decoration. Iron springs partly missing, all without pin. L 41-72 mm Ex European private collection, acquired on the German art market before 2000.

50



385 A GROUP OF FIVE BYZANTINE BRONZE BROOCHES WITH BENT FOOT Circa 5th-6th century AD. Bow brooches with folded foot (umgeschlagenem Fuß); some with incised or punched decoration. Iron springs partly missing, all but one without pin. L 49-69 mm Ex European private collection, acquired on the German art market before 2000.

50



386 A GROUP OF SIX BYZANTINE BRONZE BROOCHES WITH BENT FOOT Circa 6th-7th century AD. Cast bow brooches with folded foot (umgeschlagenem Fuß), mostly with incised or punched decoration. Iron springs partly missing, all without pin. L 41-62 mm Ex European private collection, acquired on the German art market before 2000.

50



387 A GROUP OF FIVE BYZANTINE BRONZE BROOCHES WITH BENT FOOT Circa 5th-6th century AD. Bow brooches with folded foot (umgeschlagenem Fuß); two with punched decoration. All springs and pins made of iron missing. L 44-73 mm Ex European private collection, acquired on the German art market before 2000.

50