



# Savoca Coins

## **Blue | 194th Weekly Blue Auction**

3 February 2024

All prices are starting prices (EUR)  
PDF catalog created by [www.biddr.com](http://www.biddr.com)



**1** Eastern Europe. Imitations of Alexander III of Macedon 300 BC. Drachm AR 16 mm, 3,44 g Very Fine

**1**



**2** Central Gaul. Lemovices 100-50 BC. Quinarius AR 17 mm, 1,92 g Very Fine

**1**



**3** Central Gaul. Lemovices 100-50 BC. Quinarius AR 15 mm, 1,85 g Very Fine

**1**



**4** Campania. Cales circa 265-240 BC. Bronze Æ 20 mm, 6,05 g Good Fine

**1**



**5** Sicily. Agyrium circa 440-420 BC. Hemilitron Æ 19 mm, 7,12 g Very Fine

**1**



**6** Sicily. Kamarina circa 461-435 BC. Litra AR 13 mm, 0,48 g Good Fine

**1**



**7** Sicily. Katane circa 405-402 BC. Bronze Æ 14 mm, 2,43 g Good Fine

**1**



**8** Sicily. Kentoripai circa 214-210 BC. Bronze Æ 25 mm, 13,02 g  
Fine

**1**



**9** Sicily. Messana circa 317-311 BC. Bronze Æ 25 mm, 10,48 g  
Good Fine

**1**



**10** Sicily. Messana, Mamertini circa 220-200 BC. Bronze Æ 30  
mm, 12,58 g Good Fine

**1**



**11** Sicily. Messana, Mamertini circa 220-200 BC. Bronze Æ 21  
mm, 6,63 g Good Fine

**1**



**12** Sicily. Selinus circa 450-440 BC. Cast Trias Æ 22 mm, 10,37  
g Fine

**1**



**13** Sicily. Syracuse. Second Democracy 466-405 BC. Dionkion Æ  
11 mm, 0,75 g Fine

**1**



**14** Sicily. Syracuse. Dionysios I 405-367 BC. Hemilitron Æ 20  
mm, 5,88 g Fine

**1**



**15** Sicily. Syracuse. Timoleon and the Third Democracy 344-317 BC. Bronze Æ 17 mm, 3,88 g Fine

**1**



**16** Sicily. Syracuse. Agathokles 317-289 BC. Bronze Æ 23 mm, 9,15 g Fine

**1**



**17** Sicily. Syracuse. Hieron II 275-215 BC. Bronze Æ 19 mm, 5,31 g Nearly Very Fine

**1**



**18** Sicily. Syracuse. Hieron II 275-215 BC. Bronze Æ 16 mm, 2,83 g Fine

**1**



**19** Sicily. Syracuse. Hieron II 275-215 BC. Bronze Æ 20 mm, 5,58 g Fine

**1**



**20** Sicily. Syracuse. Hieron II 275-215 BC. Bronze Æ 22 mm, 7,56 g Good Fine

**1**



**21** Sicily. Syracuse. Hieron II 275-215 BC. Bronze Æ 21 mm, 6,80 g Fine

**1**





**22** Sicily. Syracuse. Hieron II 275-215 BC. Bronze Æ 17 mm, 3,29 g Fine

**1**



**23** Sicily. Syracuse circa 214-212 BC. Bronze Æ 28 mm, 15,53 g Fine

**1**



**24** Sicily. Syracuse circa 212 BC. Bronze Æ 22 mm, 6,49 g Fine

**1**



**25** Sicily. Syracuse circa 212 BC. Bronze Æ 21 mm, 6,50 g Fine

**1**



**26** Sicily. Syracuse circa 150-50 BC. Bronze Æ 20 mm, 4,49 g Fine

**1**



**27** Sicily. The Mamertinoi circa 270-220 BC. Bronze Æ 21 mm, 7,48 g Good Fine

**1**



**28** Sicily. The Mamertinoi circa 220-200 BC. Bronze Æ 27 mm, 10,36 g Good Fine

**1**



**29** Sicily. The Mamertinoi after circa 211 BC. Bronze Æ 28 mm, 11,79 g Good Fine

**1**



**30** Sicily. Thermai Himerensis circa 367-330 BC. Bronze Æ 14 mm, 3,16 g Fine

**1**



**31** Macedon. Amphipolis circa 187-31 BC. Bronze Æ 14 mm, 1,02 g Very Fine

**1**



**32** Macedon. Mende circa 460-423 BC. Hemiobol AR 7 mm, 0,35 g Nearly Very Fine

**1**



**33** Kings of Macedon. Uncertain mint. Amyntas III 393-369 BC. Bronze Æ 16 mm, 4,09 g Very Fine

**1**



**34** Kings of Macedon. Uncertain mint. Philip II of Macedon 359-336 BC. Bronze Æ 18 mm, 6,05 g Nearly Very Fine

**1**



**35** Kings of Macedon. Uncertain mint. Philip II of Macedon 359-336 BC. Bronze Æ 18 mm, 6,40 g Very Fine

**1**



**36** Kings of Macedon. Uncertain mint. Philip II of Macedon 359-336 BC. Bronze Æ 17 mm, 7,10 g Nearly Very Fine

**1**



**37** Kings of Macedon. Uncertain mint. Philip II of Macedon 359-336 BC. Bronze Æ 18 mm, 5,93 g Very Fine

**1**



**38** Kings of Macedon. Uncertain mint. Philip II of Macedon 359-336 BC. Bronze Æ 18 mm, 6,12 g Very Fine

**1**



**39** Kings of Macedon. Uncertain mint. Philip II of Macedon 359-336 BC. Bronze Æ 17 mm, 6,81 g Very Fine

**1**



**40** Kings of Macedon. Uncertain mint. Philip II of Macedon 359-336 BC. Bronze Æ 18 mm, 7,26 g Very Fine

**1**



**41** Kings of Macedon. Uncertain mint. Philip II of Macedon 359-336 BC. Bronze Æ 18 mm, 6,03 g Very Fine

**1**



**42** Kings of Macedon. Uncertain mint. Philip II of Macedon 359-336 BC. Bronze Æ 18 mm, 6,86 g Very Fine

**1**



**43** Kings of Macedon. Uncertain mint. Philip II of Macedon 359-336 BC. Bronze Æ 18 mm, 6,22 g Very Fine

**1**



**44** Kings of Macedon. Uncertain mint. Philip II of Macedon 359-336 BC. Bronze Æ 18 mm, 6,44 g Very Fine

**1**



**45** Kings of Macedon. Uncertain mint. Philip II of Macedon 359-336 BC. Bronze Æ 11 mm, 1,63 g Very Fine

**1**



**46** Kings of Macedon. Uncertain mint. Philip II of Macedon 359-336 BC. Bronze Æ 18 mm, 5,09 g Nearly Very Fine

**1**



**47** Kings of Macedon. Uncertain mint. Philip II of Macedon 359-336 BC. Bronze Æ 18 mm, 6,54 g Nearly Very Fine

**1**



**48** Kings of Macedon. Uncertain mint. Philip II of Macedon 359-336 BC. Bronze Æ 17 mm, 7,31 g Very Fine

**1**



**49** Kings of Macedon. Uncertain mint. Philip II of Macedon 359-336 BC. Bronze Æ 17 mm, 5,68 g Very Fine

**1**





**50** Kings of Macedon. Erythrai. Alexander III "the Great" 336-323 BC. Drachm AR 19 mm, 3,79 g Very Fine

**1**



**51** Kings of Macedon. Uncertain mint. Alexander III "the Great" 336-323 BC. Bronze Æ 13 mm, 3,17 g Nearly Very Fine

**1**



**52** Kings of Macedon. Uncertain mint. Alexander III "the Great" 336-323 BC. Bronze Æ 16 mm, 6,10 g Very Fine

**1**



**53** Kings of Macedon. Uncertain mint. Alexander III "the Great" 336-323 BC. Bronze Æ 16 mm, 5,41 g Nearly Very Fine

**1**



**54** Kings of Macedon. Uncertain mint. Alexander III "the Great" 336-323 BC. Bronze Æ 18 mm, 6,00 g Very Fine

**1**



**55** Kings of Macedon. Uncertain mint. Alexander III "the Great" 336-323 BC. Bronze Æ 18 mm, 6,16 g Good Very Fine

**1**



**56** Kings of Macedon. Uncertain mint. Alexander III "the Great" 336-323 BC. Bronze Æ 17 mm, 5,91 g Nearly Very Fine

**1**



**57** Kings of Macedon. Uncertain mint. Alexander III "the Great" 336-323 BC. Bronze Æ 18 mm, 5,81 g Nearly Very Fine

**1**



**58** Kings of Macedon. Uncertain mint. Alexander III "the Great" 336-323 BC. Bronze Æ 18 mm, 4,21 g Very Fine

**1**



**59** Kings of Macedon. Uncertain mint in Western Asia Minor. Alexander III "the Great" 336-323 BC. Bronze Æ 19 mm, 5,54 g Very Fine

**1**



**60** Kings of Macedon. Uncertain mint, probably Tarsos. Alexander III "the Great" 336-323 BC. Bronze Æ 19 mm, 6,78 g Nearly Very Fine

**1**



**61** Kings of Macedon. Magnesia ad Maeandrum. Philip III Arrhidaeus 323-317 BC. Drachm AR 16 mm, 4,12 g Very Fine

**1**



**62** Kings of Macedon. Salamis. Philip III Arrhidaeus 323-317 BC. Struck under Nikokreon, 323-317 BC Bronze Æ 16 mm, 4,07 g Nearly Very Fine

**1**



**63** Kings of Macedon. Miletos. Demetrios I Poliorketes 306-283 BC. In the name and types of Alexander III Drachm AR 17 mm, 4,08 g Very Fine

**1**





**64** Kings of Macedon. Uncertain mint. Philip V 221-179 BC.  
Bronze Æ 21 mm, 7,62 g Very Fine

**1**



**65** Kings of Macedon. Uncertain mint. Perseus 179-168 BC.  
Bronze Æ 23 mm, 6,87 g Nearly Very Fine

**1**



**66** Thrace. Maroneia circa 189-45 BC. Bronze Æ 31 mm, 15,20 g  
Good Fine

**1**



**67** The Thracian Chersonese. Chersonesos circa 386-338 BC.  
Hemidrachm AR 13 mm, 2,39 g Very Fine

**1**



**68** The Thracian Chersonese. Chersonesos circa 386-338 BC.  
Hemidrachm AR 12 mm, 2,20 g Very Fine

**1**



**69** The Thracian Chersonese. Chersonesos circa 386-338 BC.  
Hemidrachm AR 12 mm, 2,41 g Very Fine

**1**



**70** The Thracian Chersonese. Chersonesos circa 386-338 BC.  
Hemidrachm AR 12 mm, 2,20 g Very Fine

**1**



**71** The Thracian Chersonese. Chersonesos circa 386-338 BC. Hemidrachm AR 12 mm, 2,37 g Very Fine

**1**



**72** The Thracian Chersonese. Lysimacheia circa 309-220 BC. Bronze Æ 19 mm, 3,82 g Very Fine

**1**



**73** Islands off Thrace. Thasos circa 411-340 BC. Drachm AR 16 mm, 3,27 g Fine

**1**



**74** Kings of Thrace. Uncertain mint. Macedonian. Lysimachos 305-281 BC. Bronze Æ 18 mm, 4,87 g Good Fine

**1**



**75** Scythia. Olbia circa 437-410 BC. Cast dolphin Æ 31 mm, 2,73 g Very Fine

**1**



**76** Scythia. Olbia circa 437-410 BC. Cast dolphin Æ 24 mm, 1,14 g Very Fine

**1**



**77** Scythia. Olbia circa 437-410 BC. Cast dolphin Æ 25 mm, 1,33 g Very Fine

**1**



**78** Scythia. Olbia circa 437-410 BC. Cast dolphin Æ 24 mm, 1,07 g Very Fine

**1**



**79** Scythia. Olbia circa 437-410 BC. Cast dolphin Æ 25 mm, 1,06 g Very Fine

**1**



**80** Scythia. Olbia circa 437-410 BC. Cast dolphin Æ 25 mm, 1,07 g Very Fine

**1**



**81** Scythia. Olbia circa 437-410 BC. Cast dolphin Æ 27 mm, 2,59 g Very Fine

**1**



**82** Scythia. Olbia circa 437-410 BC. Cast dolphin Æ 29 mm, 2,07 g Very Fine

**1**



**83** Scythia. Olbia circa 437-410 BC. Cast dolphin Æ 23 mm, 1,71 g Very Fine

**1**



**84** Scythia. Olbia circa 400-320 BC. Bronze Æ 17 mm, 3,83 g Very Fine

**1**



**85** Scythia. Olbia circa 400-320 BC. Bronze Æ 17 mm, 3,69 g Very Fine

**1**



**86** Scythia. Olbia circa 400-320 BC. Bronze Æ 17 mm, 3,68 g Nearly Very Fine

**1**



**87** Scythia. Olbia circa 400-320 BC. Bronze Æ 14 mm, 2,03 g Good Fine

**1**



**88** Scythia. Olbia circa 320-280 BC. Bronze Æ 22 mm, 8,00 g  
Very Fine

**1**



**89** Scythia. Olbia circa 310-280 BC. Bronze Æ 21 mm, 12,21 g  
Very Fine

**1**



**90** Scythia. Olbia circa 310-280 BC. Bronze Æ 23 mm, 9,68 g  
Very Fine

**1**



**91** Scythia. Olbia circa 310-280 BC. Bronze Æ 21 mm, 8,07 g  
Very Fine

**1**



**92** Thessaly. Magnetes circa 200-100 BC. Bronze Æ 20 mm,  
6,95 g Very Fine

**1**



**93** Thessaly. Thessalian League circa 150-50 BC. Bronze Æ 21  
mm, 8,37 g Nearly Very Fine

**1**



**94** Thessaly. Triikka circa 300-250 BC. Ex NAC 123, Lot 414  
Chalkous Æ 14 mm, 1,83 g Very Fine

**1**



**95** Illyria. Apollonia. ΑΥΤΟΒΟΥΛΟΣ (Autoboulos) and ΝΙΚΗΝ (Niken), magistrates circa 229-100 BC. Drachm AR 17 mm, 3,02 g Very Fine

**1**



**96** Illyria. Apollonia. ΕΠΙΚΑΔΟΣ (Epikados) and ΑΓΙΑΣ (Agias), magistrates circa 229-100 BC. Drachm AR 17 mm, 3,39 g Very Fine

**1**



**97** Illyria. Apollonia. ΑΝΔΡΙΩΝ (Andrion) and ΘΕΟΦΙΛΟΥ (Theophilos), magistrates circa 120-70 BC. Drachm AR 17 mm, 3,19 g Very Fine

**1**



**98** Illyria. Dyrrhachion. ΜΕΝΙΣΚΟΣ (Meniskos) and ΛΥΚΙΣΚΟΥ (Lykiskos), magistrates circa 229-100 BC. Drachm AR 17 mm, 3,19 g Very Fine

**1**



**99** Attica. Athens circa 454-404 BC. Tetradrachm AR 24 mm, 16,73 g Good Fine, test cut

**1**



**100** Attica. Eleusis circa 340-335 BC. Eleusinian festival coinage Bronze Æ 14 mm, 2,10 g Nearly Very Fine

**1**



**101** Arkadia. Heraia circa 380-350 BC. Bronze Æ 13 mm, 2,33 g Good Fine

**1**





**102** Asia Minor. Uncertain mint circa 350-200 BC. Bronze Æ 16 mm, 2,98 g Very Fine

**1**



**103** Asia Minor. Uncertain mint circa 300-100 BC. Bronze Æ 25 mm, 11,62 g Fine

**1**



**104** Asia Minor. Uncertain mint circa 300-200 BC. Bronze Æ 27 mm, 10,58 g Fine

**1**



**105** Pontos. Amisos. Time of Mithradates VI Eupator circa 120-63 BC. Bronze Æ 20 mm, 6,98 g Nearly Very Fine

**1**



**106** Pontos. Amisos. Time of Mithradates VI Eupator circa 120-63 BC. Bronze Æ 22 mm, 7,66 g Nearly Very Fine

**1**



**107** Pontos. Amisos. Time of Mithradates VI Eupator circa 120-63 BC. Bronze Æ 21 mm, 6,50 g Nearly Very Fine

**1**



**108** Pontos. Amisos. Time of Mithradates VI Eupator circa 120-63 BC. Bronze Æ 20 mm, 8,32 g Nearly Very Fine

**1**





**109** Pontos. Amisos as Peiraieos circa 435-370 BC. Siglos-Drachm AR 15 mm, 4,05 g Fine

**1**



**110** Pontos. Uncertain mint circa 130-100 BC. Bronze Æ 14 mm, 1,79 g Very Fine

**1**



**111** Paphlagonia. Amastris. Time of Mithradates VI Eupator circa 120-63 BC. Bronze Æ 22 mm, 8,24 g Nearly Very Fine

**1**



**112** Paphlagonia. Sinope circa 490-425 BC. Drachm AR 17 mm, 5,99 g Fine, test cuts

**1**



**113** Paphlagonia. Sinope circa 330-250 BC. Hemidrachm AR 15 mm, 3,11 g Very Fine

**1**



**114** Paphlagonia. Sinope. Time of Mithradates VI Eupator circa 120-63 BC. Bronze Æ 22 mm, 7,03 g Very Fine

**1**



**115** Kings of Paphlagonia. Pylaimenes II/III Euergetes 133-103 BC. Bronze Æ 16 mm, 3,32 g Very Fine

**1**



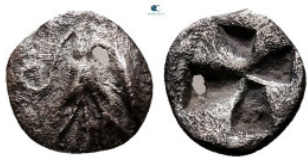
**116** Mysia. Kyzikos circa 525-475 BC. Diobol AR 12 mm, 1,18 g  
Very Fine

**1**



**117** Mysia. Kyzikos circa 525-475 BC. Obol AR 11 mm, 0,62 g  
Very Fine

**1**



**118** Mysia. Kyzikos circa 500 BC. Hemiobol AR 8 mm, 0,35 g  
Very Fine, holed

**1**



**119** Mysia. Kyzikos circa 500 BC. Hemiobol AR 8 mm, 0,41 g  
Very Fine

**1**



**120** Mysia. Kyzikos circa 300-200 BC. Bronze AÆ 12 mm, 1,05 g  
Nearly Very Fine

**1**



**121** Mysia. Kyzikos circa 300-200 BC. Bronze AÆ 13 mm, 1,64 g  
Nearly Very Fine

**1**



**122** Mysia. Kyzikos circa 300-200 BC. Bronze AÆ 19 mm, 6,15 g  
Good Fine

**1**



**123** Mysia. Kyzikos circa 300-200 BC. Bronze Æ 18 mm, 5,70 g  
Very Fine

**1**



**124** Mysia. Kyzikos circa 300-200 BC. Overstruck on an earlier  
issue from Kyzikos (SNG Paris 436) Bronze Æ 27 mm, 14,66 g  
Very Fine

**1**



**125** Mysia. Lampsakos circa 500-450 BC. Obol AR 10 mm, 0,85  
g Nearly Very Fine

**1**



**126** Mysia. Lampsakos circa 500-450 BC. Obol AR 10 mm, 0,73  
g Nearly Very Fine

**1**



**127** Mysia. Parion circa 400-350 BC. Hemidrachm AR 12 mm,  
1,95 g Fine

**1**



**128** Mysia. Pergamon circa 200-133 BC. Bronze Æ 15 mm, 2,18  
g Good Fine

**1**



**129** Mysia. Pergamon circa 200-133 BC. Bronze Æ 20 mm, 5,27  
g Nearly Very Fine

**1**



**130** Mysia. Pergamon circa 200-133 BC. Bronze Æ 18 mm, 7,45 g Nearly Very Fine

**1**



**131** Mysia. Pergamon circa 133-27 BC. Bronze Æ 19 mm, 7,58 g Nearly Very Fine

**1**



**132** Mysia. Pergamon circa 133-27 BC. Bronze Æ 19 mm, 8,43 g Nearly Very Fine

**1**



**133** Mysia. Pergamon circa 133-27 BC. Bronze Æ 19 mm, 6,77 g Nearly Very Fine

**1**



**134** Mysia. Pergamon circa 133-27 BC. Bronze Æ 18 mm, 2,96 g Nearly Very Fine

**1**



**135** Mysia. Prokonnesos circa 400-350 BC. Hemiobol AR 10 mm, 0,35 g Nearly Very Fine

**1**



**136** Kings of Pergamon. Pergamon. Philetairos 282-263 BC. Bronze Æ 13 mm, 1,70 g Nearly Very Fine

**1**



**137** Troas. Birytis circa 400-200 BC. Bronze Æ 11 mm, 1,03 g  
Very Fine

**1**



**138** Troas. Birytis circa 400-200 BC. Bronze Æ 11 mm, 1,35 g  
Very Fine

**1**



**139** Troas. Gergis circa 400-241 BC. Bronze Æ 17 mm, 3,60 g  
Fine

**1**



**140** Troas. Gergis circa 400-300 BC. Bronze Æ 13 mm, 2,61 g  
Nearly Very Fine

**1**



**141** Troas. Kebren circa 500-400 BC. Obol AR 8 mm, 0,57 g  
Good Fine

**1**



**142** Troas. Kebren circa 420-412 BC. Bronze Æ 9 mm, 0,63 g  
Very Fine

**1**



**143** Aiolis. Kyme circa 350-250 BC. Bronze Æ 16 mm, 3,32 g  
Very Fine

**1**





**144** Aiolis. Kyme circa 200-100 BC. Bronze Æ 15 mm, 4,48 g  
Very Fine

**1**



**145** Aiolis. Myrina circa 400-200 BC. Bronze Æ 16 mm, 3,19 g  
Nearly Very Fine

**1**



**146** Lesbos. Methymna circa 400-300 BC. Bronze Æ 16 mm,  
3,07 g Very Fine

**1**



**147** Lesbos. Methymna circa 330-280 BC. Bronze Æ 16 mm,  
4,16 g Nearly Very Fine

**1**



**148** Lesbos. Uncertain mint circa 500-450 BC. BI 1/8 Stater 12  
mm, 1,49 g Nearly Very Fine

**1**



**149** Ionia. Achaemenid Period. Uncertain mint circa 380-350 BC.  
Autophradates. Satrap of Sparda (Lydia and Ionia) Bronze Æ 10  
mm, 1,55 g Good Fine

**1**



**150** Ionia. Ephesos circa 550-500 BC. Tetartemorion AR 5 mm,  
0,18 g Nearly Very Fine

**1**





**151** Ionia. Ephesos circa 500-420 BC. Tetartemorion AR 5 mm, 0,22 g Very Fine

**1**



**152** Ionia. Ephesos circa 390-300 BC. Bronze Æ 9 mm, 0,70 g Nearly Very Fine

**1**



**153** Ionia. Ephesos circa 390-300 BC. Bronze Æ 10 mm, 0,95 g Nearly Very Fine

**1**



**154** Ionia. Ephesos circa 375-325 BC. Bronze Æ 10 mm, 1,40 g Very Fine

**1**



**155** Ionia. Ephesos circa 375-325 BC. Bronze Æ 10 mm, 1,15 g Good Very Fine

**1**



**156** Ionia. Ephesos circa 320-300 BC. Bronze Æ 13 mm, 2,13 g Nearly Very Fine

**1**



**157** Ionia. Ephesos circa 200-0 BC. Bronze Æ 19 mm, 4,76 g Very Fine

**1**



**158** Ionia. Ephesos circa 100-40 BC. Tessera Æ 17 mm, 4,50 g  
Nearly Very Fine

**1**



**159** Ionia. Ephesos. ΠΥΘΩΝ (Python), magistrate circa 50-27 BC.  
Bronze Æ 14 mm, 3,89 g Very Fine

**1**



**160** Ionia. Erythrai circa 400-200 BC. Bronze Æ 19 mm, 5,79 g  
Very Fine

**1**



**161** Ionia. Erythrai circa 300-200 BC. Bronze Æ 16 mm, 2,89 g  
Very Fine

**1**



**162** Ionia. Kolophon circa 389-350 BC. Bronze Æ 11 mm, 1,16 g  
Nearly Very Fine

**1**



**163** Ionia. Kolophon circa 330-294 BC. Bronze Æ 14 mm, 1,87 g  
Very Fine

**1**



**164** Ionia. Kolophon circa 330-294 BC. Bronze Æ 13 mm, 1,62 g  
Nearly Very Fine

**1**



**165** Ionia. Kolophon circa 330-285 BC. Bronze Æ 14 mm, 2,17 g  
Nearly Very Fine

**1**



**166** Ionia. Leukai circa 350-300 BC. Bronze Æ 11 mm, 1,28 g  
Fine

**1**



**167** Ionia. Magnesia ad Maeander circa 450-400 BC.  
Tetartemorion AR 5 mm, 0,17 g Very Fine

**1**



**168** Ionia. Magnesia ad Maeander circa 400-350 BC. Bronze Æ  
12 mm, 1,12 g Very Fine

**1**



**169** Ionia. Magnesia ad Maeander circa 400-350 BC. Bronze Æ 7  
mm, 0,56 g Nearly Very Fine

**1**



**170** Ionia. Magnesia ad Maeander circa 400-350 BC. Bronze Æ  
10 mm, 1,28 g Very Fine

**1**



**171** Ionia. Magnesia ad Maeander circa 400-350 BC. Bronze Æ  
11 mm, 1,57 g Nearly Very Fine

**1**



**172** Ionia. Magnesia ad Maeander circa 350-200 BC. Bronze Æ  
15 mm, 2,83 g Very Fine

**1**



**173** Ionia. Magnesia ad Maeander circa 350-200 BC. Bronze Æ  
15 mm, 3,11 g Very Fine

**1**



**174** Ionia. Metropolis circa 100-0 BC. Andron, magistrate Bronze  
Æ 16 mm, 2,60 g Nearly Very Fine

**1**



**175** Ionia. Miletos circa 525-475 BC. Diobol AR 10 mm, 1,10 g  
Nearly Very Fine

**1**



**176** Ionia. Miletos circa 400-375 BC. Bronze Æ 8 mm, 0,61 g  
Fine

**1**



**177** Ionia. Miletos circa 350-190 BC. Bronze Æ 11 mm, 0,94 g  
Nearly Very Fine

**1**



**178** Ionia. Miletos circa 350-190 BC. Bronze Æ 19 mm, 3,96 g  
Nearly Very Fine

**1**



**179** Ionia. Miletos circa 313-290 BC. Bronze Æ 14 mm, 1,50 g  
Good Fine

**1**



**180** Ionia. Miletos circa 313-290 BC. Bronze Æ 16 mm, 4,33 g  
Nearly Very Fine

**1**



**181** Ionia. Miletos circa 260-220 BC. Bronze Æ 19 mm, 3,44 g  
Fine

**1**



**182** Ionia. Miletos circa 225-190 BC. Drachm AR 20 mm, 4,61 g  
Very Fine

**1**



**183** Ionia. Miletos circa 225-190 BC. Drachm AR 20 mm, 4,45 g  
Very Fine

**1**



**184** Ionia. Miletos circa 225-190 BC. Drachm AR 18 mm, 4,50 g  
Very Fine

**1**



**185** Ionia. Miletos. BION (Bion), magistrate circa 225-190 BC.  
Drachm AR 21 mm, 4,09 g Very Fine

**1**





**186** Ionia. Phygela circa 250-200 BC. Bronze Æ 7 mm, 0,78 g  
Fine

**1**



**187** Ionia. Priene circa 350-340 BC. Bronze Æ 8 mm, 1,03 g  
Good Fine

**1**



**188** Ionia. Smyrna circa 170-145 BC. Bronze Æ 12 mm, 1,35 g  
Very Fine

**1**



**189** Ionia. Smyrna circa 115-105 BC. Bronze Æ 12 mm, 1,08 g  
Nearly Very Fine

**1**



**190** Ionia. Smyrna circa 115-105 BC. Bronze Æ 11 mm, 1,29 g  
Nearly Very Fine

**1**



**191** Ionia. Smyrna circa 115-50 BC. Bronze Æ 16 mm, 4,35 g  
Very Fine

**1**



**192** Ionia. Smyrna. ΑΠΟΛΛΩΝΙΟΣ (Apollonios), magistrate 75-50  
BC. Bronze Æ 18 mm, 4,60 g Very Fine

**1**





**193** Caria. Bargylia circa 200-100 BC. Bronze Æ 20 mm, 6,08 g  
Nearly Very Fine

**1**



**194** Caria. Euhippe circa 300 BC. Bronze Æ 16 mm, 4,15 g Very  
Fine

**1**



**195** Caria. Iasos circa 300 BC. Bronze Æ 13 mm, 2,51 g Very  
Fine

**1**



**196** Caria. Kindya circa 510-480 BC. Tetrobol AR 14 mm, 1,78 g  
Very Fine

**1**



**197** Caria. Kindya circa 510-480 BC. Tetrobol AR 11 mm, 1,70 g  
Very Fine

**1**



**198** Caria. Mylasa circa 300-100 BC. Bronze Æ 17 mm, 4,42 g  
Very Fine

**1**



**199** Lydia. Philadelphia circa 200-0 BC. Bronze Æ 20 mm, 6,84 g  
Very Fine

**1**



**200** Lydia. Philadelphia circa 100-0 BC. Bronze Æ 20 mm, 5,61 g  
Nearly Very Fine

**1**



**201** Lydia. Sardeis circa 133 BC-AD 14. Bronze Æ 16 mm, 3,65 g  
Nearly Very Fine

**1**



**202** Lydia. Sardeis circa 133 BC-AD 14. Bronze Æ 19 mm, 6,45 g  
Very Fine

**1**



**203** Lydia. Thyateira circa 200-100 BC. Bronze Æ 17 mm, 2,59 g  
Nearly Very Fine

**1**



**204** Lydia. Tralleis circa 200-0 BC. Bronze Æ 16 mm, 3,50 g  
Very Fine

**1**



**205** Phrygia. Apameia circa 133-48 BC. Bronze Æ 16 mm, 4,30 g  
Nearly Very Fine

**1**



**206** Phrygia. Apameia circa 88-44 BC. Bronze Æ 16 mm, 3,75 g  
Very Fine

**1**



**207** Phrygia. Apameia circa 88-40 BC. Bronze Æ 20 mm, 8,66 g  
Very Fine

**1**



**208** Phrygia. Apameia circa 88-40 BC. Bronze Æ 24 mm, 7,37 g  
Nearly Very Fine

**1**



**209** Phrygia. Apameia circa 88-40 BC. Bronze Æ 21 mm, 6,68 g  
Nearly Very Fine

**1**



**210** Phrygia. Laodikeia ad Lycum circa 133-67 BC. Bronze Æ 20  
mm, 6,30 g Nearly Very Fine

**1**



**211** Phrygia. Peltaï circa 200-100 BC. Bronze Æ 15 mm, 4,63 g  
Very Fine

**1**



**212** Lycia. Lycian league. Masikytes circa 48-42 BC. Drachm AR  
13 mm, 1,15 g Nearly Very Fine

**1**



**213** Pamphylia. Attaleia circa 159-100 BC. Bronze Æ 16 mm,  
3,55 g Nearly Very Fine

**1**



**214** Pamphylia. Perge circa 260-230 BC. Bronze Æ 15 mm, 2,60 g Good Fine

**1**



**215** Pamphylia. Perge circa 260-230 BC. Bronze Æ 17 mm, 3,79 g Nearly Very Fine

**1**



**216** Pamphylia. Perge circa 260-230 BC. Bronze Æ 16 mm, 3,54 g Nearly Very Fine

**1**



**217** Pamphylia. Perge circa 200-100 BC. Bronze Æ 17 mm, 4,08 g Nearly Very Fine

**1**



**218** Pamphylia. Perge circa 200-100 BC. Bronze Æ 17 mm, 3,76 g Fine

**1**



**219** Pamphylia. Perge circa 50-30 BC. Bronze Æ 15 mm, 4,17 g Very Fine

**1**



**220** Pamphylia. Side circa 100-0 BC. Bronze Æ 16 mm, 3,58 g Nearly Very Fine

**1**



**221** Pisidia. Isinda circa 100-0 BC. Bronze Æ 19 mm, 4,91 g Very Fine

**1**



**222** Pisidia. Isinda circa 100-0 BC. Bronze Æ 19 mm, 5,73 g Nearly Very Fine

**1**



**223** Pisidia. Selge circa 350-300 BC. Obol AR 9 mm, 0,67 g Nearly Very Fine

**1**



**224** Pisidia. Selge circa 250-190 BC. Obol AR 10 mm, 0,87 g Very Fine

**1**



**225** Pisidia. Termessos Major circa 100-0 BC. Bronze Æ 16 mm, 2,66 g Nearly Very Fine

**1**



**226** Pisidia. Termessos Major circa 100-0 BC. Bronze Æ 19 mm, 3,15 g Nearly Very Fine

**1**



**227** Cilicia. Aigeai circa 200-0 BC. Bronze Æ 22 mm, 5,41 g Very Fine

**1**





**228** Cilicia. Elaioussa-Sebaste circa 100-0 BC. Bronze Æ 22 mm, 7,23 g Good Fine

**1**



**229** Cilicia. Kelenderis circa 200-100 BC. Bronze Æ 20 mm, 5,64 g Good Fine

**1**



**230** Cilicia. Seleukeia ad Kalykadnon circa 200-100 BC. Bronze Æ 23 mm, 7,36 g Very Fine

**1**



**231** Cilicia. Tarsos circa 167-27 BC. Bronze Æ 20 mm, 5,88 g Good Fine

**1**



**232** Cilicia. Uncertain mint circa 400-300 BC. Obol AR 10 mm, 0,48 g Very Fine

**1**



**233** Cyprus. Salamis. Nikodamos circa 460-450 BC. Obol AR 10 mm, 0,66 g Good Fine

**1**



**234** Kings of Cappadocia. Mint A (Eusebeia under Mt. Argaios). Ariarathes IX Eusebes 101-87 BC. Drachm AR 17 mm, 4,18 g Nearly Very Fine

**1**



**235** Kings of Cappadocia. Eusebeia-Mazaka. Ariobarzanes I Philoromaios 96-63 BC. Drachm AR 18 mm, 3,80 g Very Fine

**1**



**236** Kings of Cappadocia. Eusebeia-Mazaka. Ariobarzanes I Philoromaios 96-63 BC. Drachm AR 17 mm, 3,95 g Very Fine

**1**



**237** Seleukid Kingdom. Sardeis. Seleukos I Nikator 312-281 BC. Bronze Æ 19 mm, 7,89 g Very Fine

**1**



**238** Seleukid Kingdom. Sardeis. Seleukos I Nikator 312-281 BC. Bronze Æ 16 mm, 3,05 g Nearly Very Fine

**1**



**239** Seleukid Kingdom. Sardeis. Seleukos I Nikator 312-281 BC. Bronze Æ 21 mm, 7,46 g Nearly Very Fine

**1**



**240** Seleukid Kingdom. Seleukeia on Tigris. Seleukos I Nikator 312-281 BC. Bronze Æ 20 mm, 6,61 g Good Fine

**1**



**241** Seleukid Kingdom. Antioch or Sardeis. Antiochos I Soter 281-261 BC. Bronze Æ 19 mm, 4,82 g Nearly Very Fine

**1**



**242** Seleukid Kingdom. Sardeis. Antiochos II Theos 261-246 BC. Bronze Æ 16 mm, 3,14 g Nearly Very Fine

**1**



**243** Seleukid Kingdom. Uncertain mint. Antiochos III Megas 223-187 BC. Bronze Æ 20 mm, 8,53 g Very Fine

**1**



**244** Seleukid Kingdom. Sardeis. Achaïos 220-214 BC. Bronze Æ 16 mm, 3,05 g Fine

**1**



**245** Seleukid Kingdom. Ake-Ptolemaïs mint. Antiochos IV Epiphanes 175-164 BC. Bronze Æ 20 mm, 7,06 g Very Fine

**1**



**246** Seleukid Kingdom. Antioch on the Orontes. Antiochos IV Epiphanes 175-164 BC. Bronze Æ 16 mm, 2,72 g Good Fine

**1**



**247** Seleukid Kingdom. Antioch on the Orontes. Antiochos IV Epiphanes 175-164 BC. Bronze Æ 18 mm, 5,39 g Nearly Very Fine

**1**



**248** Seleukid Kingdom. Antioch on the Orontes. Demetrios I Soter 162-150 BC. Serrate Æ 20 mm, 5,82 g Fine

**1**



**249** Seleukid Kingdom. Antioch on the Orontes. Demetrios I Soter 162-150 BC. Serrate Æ 20 mm, 8,08 g Fine

**1**



**250** Seleukid Kingdom. Antioch on the Orontes. Demetrios I Soter 162-150 BC. Serrate Æ 16 mm, 3,89 g Very Fine

**1**



**251** Seleukid Kingdom. Antioch on the Orontes. Demetrios I Soter 162-150 BC. Drachm AR 16 mm, 3,92 g Very Fine

**1**



**252** Seleukid Kingdom. Antioch on the Orontes. Demetrios I Soter 162-150 BC. Drachm AR 17 mm, 4,08 g Very Fine

**1**



**253** Seleukid Kingdom. Antioch on the Orontes. Demetrios I Soter 162-150 BC. Drachm AR 17 mm, 4,04 g Very Fine

**1**



**254** Seleukid Kingdom. Antioch on the Orontes. Alexander I Balas 152-145 BC. Serrate Æ 21 mm, 7,33 g Fine

**1**



**255** Seleukid Kingdom. Antioch on the Orontes. Demetrios II Nikator, 1st reign 146-138 BC. Bronze Æ 23 mm, 12,71 g Very Fine

**1**





**256** Seleukid Kingdom. Tyre. Demetrios II Nikator, 1st reign 146-138 BC. Shekel AR 29 mm, 12,52 g Nearly Very Fine, holed

**1**



**257** Seleukid Kingdom. Antioch on the Orontes. Tryphon 142-138 BC. Bronze Æ 17 mm, 3,77 g Nearly Very Fine

**1**



**258** Seleukid Kingdom. Antioch on the Orontes. Tryphon 142-138 BC. Bronze Æ 17 mm, 5,06 g Very Fine

**1**



**259** Seleukid Kingdom. Antioch on the Orontes. Antiochos VII Euergetes 138-129 BC. Bronze Æ 19 mm, 6,13 g Very Fine

**1**



**260** Seleukid Kingdom. Antioch on the Orontes. Antiochos VII Euergetes 138-129 BC. Bronze Æ 20 mm, 5,65 g Very Fine

**1**



**261** Seleukid Kingdom. Uncertain mint. Antiochos VII Euergetes 138-129 BC. Drachm AR 17 mm, 3,88 g Very Fine

**1**



**262** Seleukid Kingdom. Antioch on the Orontes. Alexander II Zabinas 128-122 BC. Bronze Æ 21 mm, 8,32 g Very Fine

**1**





**263** Seleukid Kingdom. Antioch on the Orontes. Antiochos VIII Epiphanes Grypos 121-97 BC. Bronze Æ 18 mm, 6,49 g Very Fine

**1**



**264** Seleukid Kingdom. Antioch on the Orontes. Antiochos VIII Epiphanes Grypos 121-97 BC. Bronze Æ 18 mm, 6,04 g Good Fine

**1**



**265** Seleukid Kingdom. Damascus. Demetrios III Eukairos 97-87 BC. Bronze Æ 20 mm, 8,75 g Very Fine

**1**



**266** Seleukid Kingdom. Antioch on the Orontes. Philip I Philadelphos 95-75 BC. Tetradrachm AR 25 mm, 14,19 g Fine

**1**



**267** Seleukid Kingdom. Antioch on the Orontes. Philip I Philadelphos 95-75 BC. Tetradrachm AR 27 mm, 15,60 g Good Very Fine

**1**



**268** Seleukid Kingdom. Uncertain mint. Philip I Philadelphos 95-75 BC. Tetradrachm AR 27 mm, 14,50 g Very Fine

**1**



**269** Kings of Commagene. Samosata. Iotape AD 38-72. Bronze Æ 16 mm, 14,29 g Fine

**1**



**270** Seleucis and Pieria. Apameia circa 100-0 BC. Bronze Æ 22 mm, 9,29 g Nearly Very Fine

**1**



**271** Seleucis and Pieria. Laodikeia. Seleukos I 312-280 BC. Tetradrachm AR 29 mm, 14,64 g Fine

**1**



**272** Seleucis and Pieria. Laodikeia circa 100-0 BC. Bronze Æ 20 mm, 6,67 g Very Fine

**1**



**273** Seleucis and Pieria. Seleukeia Pieria circa 150-0 BC. Bronze Æ 21 mm, 7,04 g Nearly Very Fine

**1**



**274** Phoenicia. Arados circa 380-350 BC. Obol AR 9 mm, 0,71 g Very Fine

**1**



**275** Phoenicia. Arados circa 241-167 BC. Bronze Æ 15 mm, 2,91 g Very Fine

**1**



**276** Phoenicia. Sidon. Time of Baalshallim I-Ba'ana 425-402 BC. 1/16 Shekel AR 10 mm, 0,57 g Very Fine

**1**



**277** Phoenicia. Sidon. Ba`alšillem (Sakton) II 401-365 BC. 1/16 Shekel AR 10 mm, 0,74 g Good Very Fine

**1**



**278** Phoenicia. Sidon. Time of Baalshallim II 401-366 BC. 1/16 Shekel AR 10 mm, 0,75 g Very Fine

**1**



**279** Phoenicia. Tyre circa 126-65 BC. 1/2 Shekel AR 20 mm, 5,20 g Fine

**1**



**280** Arabia. Southern. Saba' circa 400-300 BC. Unit AR 9 mm, 0,59 g Very Fine

**1**



**281** Nabataean Kingdom. Petra. Rabbel II, with Gamilat AD 70-106. Drachm AR 15 mm, 3,81 g Good Fine

**1**



**282** Nabataean Kingdom. Petra circa 135-9 BC. Imitating Macedonian staters of Alexander III and Philip III Bronze Æ 22 mm, 8,35 g Fine

**1**



**283** Nabataean Kingdom. Petra. Obodas II 30-9 BC. Bronze Æ 23 mm, 6,71 g Fine

**1**



**284** Nabataean Kingdom. Petra. Obodas III 30-9 BC. Bronze Æ  
25 mm, 10,38 g Fine

**1**



**285** Nabataean Kingdom. Petra. Aretas IV 9 BC-AD 40. Bronze Æ  
10 mm, 0,82 g Nearly Very Fine

**1**



**286** Nabataean Kingdom. Petra. Aretas IV, with Shaqilat 9 BC-  
AD 40. Drachm AR 14 mm, 3,27 g Very Fine

**1**



**287** Nabataean Kingdom. Petra. Aretas IV, with Shaqilat 9 BC-  
AD 40. Drachm AR 14 mm, 3,62 g Nearly Very Fine

**1**



**288** Nabataean Kingdom. Petra. Aretas IV, with Shaqilat 9 BC-  
AD 40. Drachm AR 15 mm, 3,05 g Very Fine

**1**



**289** Nabataean Kingdom. Petra. Syllaios 9 BC-AD 40. Bronze Æ  
14 mm, 2,04 g Very Fine

**1**



**290** Kings of Armenia. Tigranocerta. Tigranes II "the Great" 95-  
56 BC. Tetradrachm AR 29 mm, 15,11 g Very Fine

**1**





**291** Bactria. Greco-Bactrian Kingdom. Baktra. Eukratides I Megas 170-145 BC. Obol AR 10 mm, 0,63 g Very Fine

**1**



**292** Ptolemaic Kingdom of Egypt. Alexandria. Ptolemy III Euergetes 246-221 BC. Bronze Æ 27 mm, 15,37 g Good Fine

**1**



**293** Ptolemaic Kingdom of Egypt. Alexandria. Ptolemy III Euergetes 246-221 BC. Oktobol Æ 47 mm, 97,45 g Nearly Very Fine

**1**



**294** Ptolemaic Kingdom of Egypt. Tyre. Ptolemy III Euergetes 246-221 BC. Obol Æ 24 mm, 11,79 g Very Fine

**1**



**295** Ptolemaic Kingdom of Egypt. Alexandria. Ptolemy IV Philopator 222-204 BC. Bronze Æ 30 mm, 21,55 g Good Fine

**1**



**296** Ptolemaic Kingdom of Egypt. Alexandria. Ptolemy VI Philometor 180-145 BC. Bronze Æ 27 mm, 13,95 g Fine

**1**



**297** Ptolemaic Kingdom of Egypt. Alexandria. Ptolemy VI Philometor 180-145 BC. Tetradrachm AR 23 mm, 11,57 g Good Fine

**1**





**298** Ptolemaic Kingdom of Egypt. Alexandria. Ptolemy X Alexander I 101-88 BC. Tetradrachm AR 24 mm, 11,97 g Nearly Very Fine

**1**



**299** Ptolemaic Kingdom of Egypt. Alexandria. Ptolemy XII Neos Dionysos (Auletes) 80-58 BC. Tetradrachm AR 23 mm, 12,29 g Good Fine

**1**



**300** Ptolemaic Kingdom of Egypt. Alexandria. Ptolemy XII Neos Dionysos (Auletes) 80-58 BC. Tetradrachm AR 25 mm, 14,01 g Very Fine

**1**



**301** Ptolemaic Kingdom of Egypt. Alexandria. Cleopatra VII Thea Neotera 51-30 BC. Bronze Æ 27 mm, 20,61 g Fine

**1**



**302** Zeugitana. Carthage circa 300 BC. Bronze Æ 21 mm, 7,24 g Fine

**1**



**303** Zeugitana. Carthage circa 300 BC. Bronze Æ 27 mm, 12,00 g Fine

**1**



**304** Zeugitana. Carthage circa 300 BC. Bronze Æ 20 mm, 4,56 g Very Fine

**1**



**305** Macedon. Koinon of Macedon (Beroea mint). Pseudo-autonomous issue AD 222-244. Bronze Æ 28 mm, 11,75 g Very Fine

**1**



**306** Macedon. Philippi. Tiberius AD 14-37. Bronze Æ 19 mm, 4,71 g Fine

**1**



**307** Macedon. Philippi. Pseudo-autonomous issue. Time of Claudius to Nero AD 41-68. Bronze Æ 17 mm, 3,70 g Nearly Very Fine

**1**



**308** Macedon. Thessalonica. Augustus, with Divus Julius Caesar 27 BC-AD 14. Bronze Æ 21 mm, 8,08 g Fine

**1**



**309** Macedon. Thessalonica. Nero AD 54-68. Bronze Æ 15 mm, 3,22 g Good Fine

**1**



**310** Thrace. Coela. Commodus AD 180-192. Bronze Æ 20 mm, 3,88 g Very Fine

**1**



**311** Thrace. Serdica. Caracalla AD 198-217. Bronze Æ 20 mm, 3,36 g Very Fine

**1**



**312** Moesia Superior. Viminacium. Philip I Arab AD 244-249.  
Bronze Æ 29 mm, 18,30 g Fine

**1**



**313** Moesia Superior. Viminacium. Philip I Arab AD 244-249.  
Bronze Æ 29 mm, 17,35 g Nearly Very Fine

**1**



**314** Moesia Superior. Viminacium. Aemilian AD 253-253. Bronze  
Æ 26 mm, 11,45 g Fine

**1**



**315** Moesia Inferior. Marcianopolis. Geta, as Caesar AD 197-209.  
Bronze Æ 18 mm, 3,16 g Nearly Very Fine

**1**



**316** Moesia Inferior. Nikopolis ad Istrum. Septimius Severus AD  
193-211. Bronze Æ 18 mm, 2,08 g Nearly Very Fine

**1**



**317** Asia Minor. Uncertain mint. Augustus 27 BC-AD 14. Bronze  
Æ 24 mm, 9,10 g Fine

**1**



**318** Pontos. Amaseia. Septimius Severus AD 193-211. Bronze Æ  
32 mm, 19,09 g Very Fine

**1**



**319** Pontos. Amaseia. Septimius Severus AD 193-211. Bronze Æ 32 mm, 26,02 g Fine

**1**



**320** Pontos. Neocaesarea. Trebonianus Gallus AD 251-253. Bronze Æ 29 mm, 16,66 g Very Fine

**1**



**321** Bithynia. Nikaia. Severus Alexander AD 222-235. Bronze Æ 27 mm, 10,44 g Fine

**1**



**322** Bithynia. Nikaia. Gordian III AD 238-244. Bronze Æ 21 mm, 3,43 g Nearly Very Fine

**1**



**323** Mysia. Kyzikos. Commodus AD 180-192. Ex Gorny & Mosch Auction 274, Lot 2612 Bronze Æ 25 mm, 7,61 g Very Fine

**1**



**324** Mysia. Parion. Caracalla AD 198-217. Bronze Æ 24 mm, 6,63 g Nearly Very Fine

**1**



**325** Mysia. Parion. Severus Alexander AD 222-235. Bronze Æ 20 mm, 5,44 g Very Fine

**1**





**326** Mysia. Parion. Otacilia Severa AD 244-249. Bronze Æ 22 mm, 4,50 g Fine

**1**



**327** Mysia. Pergamon. Livia, wife of Augustus AD 14-29. Bronze Æ 18 mm, 3,99 g Fine

**1**



**328** Mysia. Pergamon. Pseudo-autonomous issue AD 40-60. Bronze Æ 16 mm, 2,97 g Nearly Very Fine

**1**



**329** Mysia. Pitane. Pseudo-autonomous issue AD 81-96. Bronze Æ 16 mm, 2,84 g Fine

**1**



**330** Troas. Alexandria. Severus Alexander AD 222-235. Bronze Æ 25 mm, 8,37 g Very Fine

**1**



**331** Troas. Alexandria. Pseudo-autonomous issue AD 253-268. Ex Roma Auction 72, Lot 407 Bronze Æ 20 mm, 5,72 g Nearly Very Fine

**1**



**332** Troas. Alexandria. Valerian I AD 253-260. Bronze Æ 21 mm, 4,94 g Nearly Very Fine

**1**





**333** Troas. Ilion. Salonina AD 254-268. Bronze Æ 20 mm, 5,80 g  
Very Fine

**1**



**334** Ionia. Smyrna. Claudius with Agrippina Minor AD 41-54.  
Bronze Æ 20 mm, 6,05 g Nearly Very Fine

**1**



**335** Ionia. Smyrna. Pseudo-autonomous issue AD 54-68. Ti.  
Claudius Hieronymos, stephanophorus and Ti. Claudius Sosander,  
strategu Bronze Æ 21 mm, 3,45 g Very Fine

**1**



**336** Ionia. Smyrna. Domitian with Domitia AD 81-96. Bronze Æ  
25 mm, 7,00 g Fine

**1**



**337** Ionia. Smyrna. Pseudo-autonomous issue AD 81-96. Bronze  
Æ 20 mm, 3,50 g Nearly Very Fine

**1**



**338** Ionia. Smyrna. Pseudo-autonomous issue AD 161-180.  
Bronze Æ 18 mm, 2,97 g Good Fine

**1**



**339** Caria. Trapezopolis. Pseudo-autonomous issue. Time of  
Augustus 27 BC-AD 14. Bronze Æ 15 mm, 2,74 g Very Fine

**1**



**340** Caria. Trapezopolis. Julia Domna. Augusta AD 193-217. Bronze Æ 20 mm, 3,41 g Good Fine

**1**



**341** Island off Caria. Rhodos. Pseudo-autonomous issue AD 10-60. Bronze Æ 35 mm, 23,17 g Fine

**1**



**342** Lydia. Magnesia ad Sipylum. Pseudo-autonomous issue AD 100-300. Bronze Æ 19 mm, 5,17 g Nearly Very Fine

**1**



**343** Lydia. Mostene. Claudius with Agrippina II AD 41-54. Bronze Æ 21 mm, 4,03 g Fine

**1**



**344** Lydia. Saitta. Julia Mamaea. Augusta AD 225-235. Bronze Æ 21 mm, 5,08 g Nearly Very Fine

**1**



**345** Phrygia. Cadi. Gordian III AD 238-244. Bronze Æ 38 mm, 19,79 g Nearly Very Fine

**1**



**346** Phrygia. Cotiaeum. Severus Alexander AD 222-235. Bronze Æ 30 mm, 10,81 g Fine

**1**



**347** Phrygia. Laodikeia ad Lycum. Pseudo-autonomous issue AD 14-37. Bronze Æ 16 mm, 4,66 g Nearly Very Fine

**1**



**348** Phrygia. Laodikeia ad Lycum. Pseudo-autonomous issue AD 81-96. Bronze Æ 16 mm, 3,46 g Very Fine

**1**



**349** Phrygia. Sebaste. Pseudo-autonomous issue AD 100-200. Bronze Æ 20 mm, 3,75 g Very Fine

**1**



**350** Pamphylia. Perge. Maximus, Caesar AD 236-238. Bronze Æ 18 mm, 3,36 g Nearly Very Fine

**1**



**351** Pamphylia. Side. Augustus 27 BC-AD 14. Bronze Æ 17 mm, 2,91 g Very Fine

**1**



**352** Pamphylia. Side. Trajan AD 98-117. Bronze Æ 19 mm, 4,10 g Fine

**1**



**353** Pamphylia. Side. Caracalla AD 198-217. Bronze Æ 27 mm, 9,60 g Very Fine

**1**



**354** Pisidia. Antioch. Vespasian AD 69-79. Bronze Æ 21 mm, 7,06 g Fine

**1**



**355** Pisidia. Antioch. Septimius Severus AD 193-211. Bronze Æ 23 mm, 4,92 g Very Fine

**1**



**356** Pisidia. Antioch. Gordian III AD 238-244. Bronze Æ 34 mm, 23,37 g Nearly Very Fine

**1**



**357** Pisidia. Parlais. Septimius Severus AD 193-211. Bronze Æ 22 mm, 4,68 g Very Fine

**1**



**358** Pisidia. Selge. Antoninus Pius AD 138-161. Bronze Æ 25 mm, 9,36 g Fine

**1**



**359** Pisidia. Termessos Major. Pseudo-autonomous issue AD 200-300. Bronze Æ 29 mm, 11,40 g Nearly Very Fine

**1**



**360** Lykaonia. Iconium. Hadrian AD 117-138. Bronze Æ 20 mm, 4,48 g Good Fine

**1**





**361** Lykaonia. Iconium (as Claudiconium). Hadrian AD 117-138.  
Bronze Æ 17 mm, 3,85 g Very Fine

**1**



**362** Lykaonia. Iconium (as Claudiconium). Hadrian AD 117-138.  
Bronze Æ 15 mm, 2,22 g Very Fine

**1**



**363** Lykaonia. Laodikeia Kombusta (as Claudiolaodicea Combusta). Vespasian AD 69-79. Bronze Æ 26 mm, 11,88 g  
Nearly Very Fine

**1**



**364** Cilicia. Anazarbos. Elagabal AD 218-222. Bronze Æ 20 mm,  
5,53 g Nearly Very Fine

**1**



**365** Cilicia. Anazarbos. Severus Alexander AD 222-235. Bronze  
Æ 33 mm, 20,90 g Nearly Very Fine

**1**



**366** Cilicia. Antiochia ad Cragum. Hadrian AD 117-138. Bronze  
Æ 19 mm, 2,70 g Good Fine

**1**



**367** Cilicia. Diokaisareia. Philip I Arab AD 244-249. Bronze Æ 33  
mm, 15,66 g Fine

**1**





**368** Cilicia. Eirenopolis - Neronias. Trajan AD 98-117. Bronze Æ 23 mm, 5,93 g Good Fine

**1**



**369** Cilicia. Flaviopolis. Maximus, Caesar AD 236-238. Bronze Æ 24 mm, 11,74 g Very Fine

**1**



**370** Cilicia. Mopsouestia - Mopsos. Valerian I AD 253-260. Bronze Æ 23 mm, 11,85 g Fine

**1**



**371** Cilicia. Seleukeia ad Kalykadnon. Severus Alexander AD 222-235. Bronze Æ 28 mm, 10,66 g Fine

**1**



**372** Cilicia. Seleukeia ad Kalykadnon. Trebonianus Gallus AD 251-253. Bronze Æ 36 mm, 26,20 g Good Fine

**1**



**373** Cilicia. Seleukeia ad Kalykadnon. Gallienus AD 253-268. Bronze Æ 32 mm, 11,49 g Nearly Very Fine

**1**



**374** Cilicia. Tarsos. Macrinus AD 217-218. Bronze Æ 36 mm, 24,80 g Fine

**1**



**375** Cilicia. Tarsos. Elagabal AD 218-222. Bronze Æ 23 mm, 6,78 g Very Fine

**1**



**376** Cilicia. Tarsos. Maximinus I Thrax AD 235-238. Bronze Æ 28 mm, 12,56 g Fine

**1**



**377** Cilicia. Tarsos. Gordian III AD 238-244. Bronze Æ 34 mm, 16,57 g Fine

**1**



**378** Cilicia. Tarsos. Philip I Arab AD 244-249. Bronze Æ 36 mm, 21,55 g Fine

**1**



**379** Cilicia. Tarsos. Valerian I AD 253-260. Bronze Æ 32 mm, 15,93 g Fine

**1**



**380** Cyprus. Koinon of Cyprus. Caracalla AD 198-217. Bronze Æ 32 mm, 20,47 g Nearly Very Fine

**1**



**381** Cyprus. Koinon of Cyprus. Caracalla AD 198-217. Bronze Æ 32 mm, 18,74 g Nearly Very Fine

**1**



**382** Cappadocia. Caesarea. Trajan AD 98-117. Didrachm AR 23 mm, 6,55 g Nearly Very Fine

**1**



**383** Cappadocia. Caesarea - Eusebeia. Elagabal AD 218-222. Bronze Æ 26 mm, 10,39 g Fine

**1**



**384** Cappadocia. Caesarea - Eusebeia. Severus Alexander AD 222-235. Bronze Æ 24 mm, 7,77 g Very Fine

**1**



**385** Cappadocia. Caesarea - Eusebeia. Severus Alexander AD 222-235. Bronze Æ 27 mm, 13,00 g Nearly Very Fine

**1**



**386** Cappadocia. Caesarea - Eusebeia. Gordian III AD 238-244. Bronze Æ 23 mm, 6,73 g Very Fine

**1**



**387** Cappadocia. Tyana. Julia Domna. Augusta AD 193-217. Bronze Æ 29 mm, 15,89 g Good Fine

**1**



**388** Cappadocia. Tyana. Caracalla AD 198-217. Bronze Æ 29 mm, 15,94 g Nearly Very Fine

**1**



**389** Commagene. Samosata. Hadrian AD 117-138. Bronze Æ 18 mm, 5,56 g Fine

**1**



**390** Commagene. Samosata. Philip I Arab AD 244-249. Bronze Æ 31 mm, 17,27 g Nearly Very Fine

**1**



**391** Commagene. Samosata. Philip II AD 247-249. Bronze Æ 29 mm, 14,36 g Good Fine

**1**



**392** Cyrrhestica. Bambyce - Hieropolis. Antoninus Pius AD 138-161. Bronze Æ 23 mm, 10,67 g Nearly Very Fine

**1**



**393** Cyrrhestica. Bambyce - Hieropolis. Lucius Verus AD 161-169. Bronze Æ 22 mm, 11,09 g Fine

**1**



**394** Cyrrhestica. Cyrrhus. Commodus AD 180-192. Bronze Æ 24 mm, 11,17 g Fine

**1**



**395** Seleucis and Pieria. Antioch. Augustus 27 BC-AD 14. Bronze Æ 24 mm, 7,89 g Very Fine

**1**





**396** Seleucis and Pieria. Antioch. Augustus 27 BC-AD 14. Bronze Æ 27 mm, 14,42 g Very Fine

**1**



**397** Seleucis and Pieria. Antioch. Pseudo-autonomous issue. Time of Augustus 27 BC-AD 14. Bronze Æ 20 mm, 6,63 g Very Fine

**1**



**398** Seleucis and Pieria. Antioch. Tiberius AD 14-37. Bronze Æ 27 mm, 14,91 g Very Fine

**1**



**399** Seleucis and Pieria. Antioch. Tiberius AD 14-37. Bronze Æ 21 mm, 6,99 g Very Fine

**1**



**400** Seleucis and Pieria. Antioch. Nero AD 54-68. Bronze Æ 29 mm, 15,10 g Good Fine

**1**



**401** Seleucis and Pieria. Antioch. Nero AD 54-68. Bronze Æ 26 mm, 15,01 g Fine

**1**



**402** Seleucis and Pieria. Antioch. Nero AD 54-68. Bronze Æ 26 mm, 14,63 g Fine

**1**





**403** Seleucis and Pieria. Antioch. Pseudo-autonomous issue AD 54-98. Bronze Æ 18 mm, 5,51 g Very Fine

**1**



**404** Seleucis and Pieria. Antioch. Pseudo-autonomous issue. Nero AD 54-68. Bronze Æ 18 mm, 5,42 g Very Fine

**1**



**405** Seleucis and Pieria. Antioch. Otho AD 69-69. Tetradrachm AR 25 mm, 13,62 g Very Fine

**1**



**406** Seleucis and Pieria. Antioch. Otho AD 69-69. Bronze Æ 25 mm, 7,52 g Very Fine

**1**



**407** Seleucis and Pieria. Antioch. Vespasian AD 69-79. Tetradrachm AR 24 mm, 12,97 g Very Fine

**1**



**408** Seleucis and Pieria. Antioch. Domitian AD 81-96. Bronze Æ 26 mm, 12,62 g Very Fine

**1**



**409** Seleucis and Pieria. Antioch. Domitian AD 81-96. Bronze Æ 24 mm, 14,35 g Very Fine

**1**



**410** Seleucis and Pieria. Antioch. Pseudo-autonomous issue AD 98-117. Bronze Æ 18 mm, 5,92 g Very Fine

**1**



**411** Seleucis and Pieria. Antioch. Pseudo-autonomous issue AD 98-117. Bronze Æ 18 mm, 5,64 g Very Fine

**1**



**412** Seleucis and Pieria. Antioch. Trajan AD 98-117. Tetradrachm AR 22 mm, 1,79 g Very Fine

**1**



**413** Seleucis and Pieria. Antioch. Trajan AD 98-117. Bronze Æ 23 mm, 5,59 g Good Fine

**1**



**414** Seleucis and Pieria. Antioch. Trajan AD 98-117. Bronze Æ 17 mm, 2,80 g Very Fine

**1**



**415** Seleucis and Pieria. Antioch. Trajan AD 98-117. Bronze Æ 27 mm, 10,65 g Very Fine

**1**



**416** Seleucis and Pieria. Antioch. Antoninus Pius AD 138-161. Bronze Æ 18 mm, 3,85 g Very Fine

**1**



**417** Seleucis and Pieria. Antioch. Antoninus Pius AD 138-161. Bronze Æ 23 mm, 8,09 g Fine

**1**



**418** Seleucis and Pieria. Antioch. Caracalla AD 198-217. Billon-Tetradrachm 26 mm, 12,01 g Nearly Very Fine

**1**



**419** Seleucis and Pieria. Antioch. Caracalla AD 198-217. Billon-Tetradrachm 28 mm, 12,12 g Very Fine

**1**



**420** Seleucis and Pieria. Antioch. Caracalla AD 198-217. Billon-Tetradrachm 26 mm, 14,89 g Very Fine

**1**



**421** Seleucis and Pieria. Antioch. Elagabal AD 218-222. Billon-Tetradrachm 30 mm, 15,35 g Very Fine

**1**



**422** Seleucis and Pieria. Antioch. Elagabal AD 218-222. Billon-Tetradrachm 26 mm, 11,93 g Very Fine

**1**



**423** Seleucis and Pieria. Antioch. Severus Alexander AD 222-235. Bronze Æ 19 mm, 5,21 g Very Fine

**1**



**424** Seleucis and Pieria. Antioch. Gordian III AD 238-244. Billon-Tetradrachm 28 mm, 13,43 g Very Fine

**1**



**425** Seleucis and Pieria. Antioch. Philip I Arab AD 244-249. Billon-Tetradrachm 28 mm, 12,48 g Very Fine

**1**



**426** Seleucis and Pieria. Antioch. Philip I Arab AD 244-249. Billon-Tetradrachm 26 mm, 13,03 g Good Very Fine

**1**



**427** Seleucis and Pieria. Antioch. Philip I Arab AD 244-249. Billon-Tetradrachm 28 mm, 11,64 g Very Fine

**1**



**428** Seleucis and Pieria. Antioch. Philip I Arab AD 244-249. Billon-Tetradrachm 27 mm, 12,77 g Good Very Fine

**1**



**429** Seleucis and Pieria. Antioch. Philip I Arab AD 244-249. Bronze AE 30 mm, 18,65 g Very Fine

**1**



**430** Seleucis and Pieria. Antioch. Philip II AD 247-249. Billon-Tetradrachm 26 mm, 10,73 g Nearly Very Fine

**1**





**431** Seleucia and Pieria. Antioch. Philip II AD 247-249. Billon-Tetradrachm 28 mm, 11,17 g Very Fine

**1**



**432** Seleucia and Pieria. Antioch. Trajan Decius AD 249-251. Billon-Tetradrachm 27 mm, 13,12 g Very Fine

**1**



**433** Seleucia and Pieria. Antioch. Trajan Decius AD 249-251. Billon-Tetradrachm 27 mm, 11,29 g Very Fine

**1**



**434** Seleucia and Pieria. Antioch. Trajan Decius AD 249-251. Billon-Tetradrachm 27 mm, 12,80 g Good Very Fine

**1**



**435** Seleucia and Pieria. Antioch. Trajan Decius AD 249-251. Billon-Tetradrachm 27 mm, 12,24 g Very Fine

**1**



**436** Seleucia and Pieria. Antioch. Trajan Decius AD 249-251. Billon-Tetradrachm 26 mm, 11,95 g Very Fine

**1**



**437** Seleucia and Pieria. Antioch. Herennius Etruscus AD 251. Billon-Tetradrachm 27 mm, 10,42 g Very Fine

**1**





**438** Seleucia and Pieria. Laodicea ad Mare. Trajan AD 98-117.  
Bronze Æ 26 mm, 9,49 g Fine

**1**



**439** Seleucia and Pieria. Laodicea ad Mare. Caracalla AD 198-217. Billon-Tetradrachm 26 mm, 14,37 g Very Fine

**1**



**440** Seleucia and Pieria. Laodicea ad Mare. Caracalla AD 198-217. Billon-Tetradrachm 25 mm, 12,03 g Very Fine

**1**



**441** Seleucia and Pieria. Laodicea ad Mare. Macrinus AD 217-218. Billon-Tetradrachm 26 mm, 13,61 g Very Fine

**1**



**442** Seleucia and Pieria. Laodicea ad Mare. Macrinus AD 217-218. Bronze Æ 28 mm, 13,84 g Very Fine

**1**



**443** Seleucia and Pieria. Struck in Rome for circulation in the East. Trajan AD 98-117. Bronze Æ 19 mm, 3,73 g Very Fine

**1**



**444** Coele. Damascus. Octavian 31-27 BC. Bronze Æ 21 mm, 6,94 g Nearly Very Fine

**1**



**445** Coele. Damascus (?). Commodus AD 180-192. Bronze Æ 24 mm, 6,74 g Fine

**1**



**446** Decapolis. Antiochia ad Hippum. Lucius Verus AD 161-169. Bronze Æ 25 mm, 10,13 g Nearly Very Fine

**1**



**447** Decapolis. Antiochia ad Hippum. Lucius Verus AD 161-169. Bronze Æ 25 mm, 10,35 g Very Fine

**1**



**448** Decapolis. Gadara. Caracalla, with Geta as Caesar AD 198-217. Bronze Æ 29 mm, 13,57 g Nearly Very Fine

**1**



**449** Decapolis. Petra. Hadrian AD 117-138. Bronze Æ 29 mm, 17,72 g Very Fine

**1**



**450** Decapolis. Petra. Hadrian AD 117-138. Bronze Æ 27 mm, 14,75 g Very Fine

**1**



**451** Phoenicia. Aradus. Caracalla AD 198-217. Billon-Tetradrachm 28 mm, 10,42 g Very Fine

**1**



**452** Phoenicia. Aradus. Macrinus AD 217-218. Billon-Tetradrachm 26 mm, 12,44 g Very Fine

**1**



**453** Phoenicia. Berytus. Gallienus AD 253-268. Bronze Æ 27 mm, 10,62 g Nearly Very Fine

**1**



**454** Phoenicia. Byblus. Julia Domna. Augusta AD 193-217. Bronze Æ 24 mm, 11,08 g Very Fine

**1**



**455** Phoenicia. Caesarea ad Libanum. Antoninus Pius AD 138-161. Bronze Æ 23 mm, 11,12 g Very Fine

**1**



**456** Phoenicia. Dora. Pseudo-autonomous issue AD 54-68. Bronze Æ 21 mm, 9,83 g Very Fine

**1**



**457** Phoenicia. Sidon. Caracalla AD 198-217. Billon-Tetradrachm 26 mm, 11,50 g Very Fine

**1**



**458** Judaea. Aelia Capitolina (Jerusalem). Marcus Aurelius and Lucius Verus AD 165-166. Bronze Æ 22 mm, 7,15 g Very Fine

**1**



**459** Judaea. Aelia Capitolina (Jerusalem). Marcus Aurelius and Lucius Verus AD 165-166. Bronze Æ 29 mm, 17,08 g Good Fine

**1**



**460** Judaea. Ascalon. Antoninus Pius AD 138-161. Bronze Æ 18 mm, 3,86 g Very Fine

**1**



**461** Judaea. Caesarea Maritima. Herodians. Agrippa II with Domitian AD 50-100. As Æ 28 mm, 9,73 g Nearly Very Fine

**1**



**462** Judaea. Caesarea Maritima. Herodians. Agrippa II with Titus AD 50-100. Bronze Æ 22 mm, 8,37 g Fine

**1**



**463** Judaea. Caesarea Maritima. Titus, as Caesar AD 76-78. Tetradrachm AR 25 mm, 13,24 g Good Fine

**1**



**464** Judaea. Caesarea Maritima. Trajan AD 98-117. Bronze Æ 25 mm, 15,29 g Very Fine

**1**



**465** Judaea. Caesarea Maritima. Caracalla AD 198-217. Billon-Tetradrachm 28 mm, 12,30 g Very Fine

**1**





**466** Judaea. Caesarea Maritima. Macrinus AD 217-218. Billon-Tetradrachm 25 mm, 12,35 g Very Fine

**1**



**467** Judaea. Caesarea Panias (Caesarea Philippi). Augustus 27 BC-AD 14. Bronze Æ 20 mm, 6,89 g Fine

**1**



**468** Judaea. Caesarea Panias (Caesarea Philippi). Tiberius AD 14-37. Bronze Æ 19 mm, 5,29 g Fine

**1**



**469** Judaea. Jerusalem. Agrippa I AD 37-43. Prutah Æ 17 mm, 2,58 g Very Fine

**1**



**470** Judaea. Jerusalem. First Jewish War AD 66-70. Prutah Æ 18 mm, 2,31 g Very Fine

**1**



**471** Judaea. Jerusalem. First Jewish War AD 66-70. Prutah Æ 17 mm, 2,76 g Nearly Very Fine

**1**



**472** Judaea. Tiberias. Herodians. Agrippa II with Domitian AD 50-100. Bronze Æ 15 mm, 2,55 g Very Fine

**1**





**473** Mesopotamia. Carrhae. Caracalla AD 198-217. Billon-Tetradrachm 27 mm, 13,08 g Very Fine

**1**



**474** Mesopotamia. Carrhae. Gordian III AD 238-244. Bronze Æ 30 mm, 16,53 g Nearly Very Fine

**1**



**475** Mesopotamia. Edessa. Commodus AD 180-192. Bronze Æ 15 mm, 2,20 g Good Fine

**1**



**476** Mesopotamia. Edessa. Severus Alexander AD 222-235. Bronze Æ 23 mm, 8,99 g Very Fine

**1**



**477** Mesopotamia. Edessa. Julia Mamaea. Augusta AD 225-235. Bronze Æ 27 mm, 8,64 g Nearly Very Fine

**1**



**478** Mesopotamia. Edessa. Gordian III with Abgar X Phraates AD 238-244. Bronze Æ 23 mm, 9,37 g Nearly Very Fine

**1**



**479** Mesopotamia. Rhesaena. Caracalla AD 198-217. Bronze Æ 17 mm, 3,99 g Nearly Very Fine

**1**



**480** Arabia. Rabbathmoba. Septimius Severus AD 193-211.  
Bronze Æ 25 mm, 12,04 g Very Fine

**1**



**481** Egypt. Alexandria. Augustus 27 BC-AD 14. Diobol Æ 25 mm,  
10,90 g Good Fine

**1**



**482** Egypt. Alexandria. Claudius with Messalina AD 41-54.  
Billon-Tetradrachm 24 mm, 12,26 g Nearly Very Fine

**1**



**483** Egypt. Alexandria. Nero AD 54-68. Billon-Tetradrachm 23  
mm, 12,50 g Nearly Very Fine

**1**



**484** Egypt. Alexandria. Nero AD 54-68. Billon-Tetradrachm 24  
mm, 11,61 g Nearly Very Fine

**1**



**485** Egypt. Alexandria. Nero AD 54-68. Billon-Tetradrachm 25  
mm, 12,12 g Nearly Very Fine

**1**



**486** Egypt. Alexandria. Nero with Tiberius AD 54-68. Billon-  
Tetradrachm 24 mm, 12,73 g Very Fine

**1**



**487** Egypt. Alexandria. Nero, with Divus Augustus AD 54-68. Billon-Tetradrachm 22 mm, 11,93 g Nearly Very Fine

**1**



**488** Egypt. Alexandria. Nero, with Poppaea AD 54-68. Billon-Tetradrachm 25 mm, 12,01 g Nearly Very Fine

**1**



**489** Egypt. Alexandria. Galba AD 68-69. Billon-Tetradrachm 25 mm, 11,94 g Nearly Very Fine

**1**



**490** Egypt. Alexandria. Vespasian AD 69-79. Billon-Tetradrachm 25 mm, 11,64 g Very Fine

**1**



**491** Egypt. Alexandria. Vespasian AD 69-79. Billon-Tetradrachm 24 mm, 12,53 g Very Fine

**1**



**492** Egypt. Alexandria. Vespasian AD 69-79. Billon-Tetradrachm 25 mm, 12,78 g Nearly Very Fine

**1**



**493** Egypt. Alexandria. Vespasian AD 69-79. Bronze Æ 24 mm, 9,13 g Nearly Very Fine

**1**



**494** Egypt. Alexandria. Hadrian AD 117-138. Billon-Tetradrachm  
25 mm, 12,61 g Very Fine

**1**



**495** Egypt. Alexandria. Hadrian AD 117-138. Billon-Tetradrachm  
25 mm, 13,06 g Good Fine

**1**



**496** Egypt. Alexandria. Hadrian AD 117-138. Billon-Tetradrachm  
25 mm, 12,65 g Very Fine

**1**



**497** Egypt. Alexandria. Hadrian AD 117-138. Billon-Tetradrachm  
25 mm, 12,78 g Very Fine

**1**



**498** Egypt. Alexandria. Hadrian AD 117-138. Billon-Tetradrachm  
24 mm, 10,64 g Very Fine

**1**



**499** Egypt. Alexandria. Hadrian AD 117-138. Billon-Tetradrachm  
25 mm, 12,97 g Very Fine

**1**



**500** Egypt. Alexandria. Hadrian AD 117-138. Billon-Tetradrachm  
24 mm, 10,59 g Nearly Very Fine

**1**





**501** Egypt. Alexandria. Hadrian AD 117-138. Billon-Tetradrachm  
25 mm, 12,96 g Very Fine

**1**



**502** Egypt. Alexandria. Hadrian AD 117-138. Billon-Tetradrachm  
25 mm, 13,38 g Very Fine

**1**



**503** Egypt. Alexandria. Hadrian AD 117-138. Drachm Æ 32 mm,  
20,79 g Fine

**1**



**504** Egypt. Alexandria. Hadrian AD 117-138. Drachm Æ 33 mm,  
24,87 g Fine

**1**



**505** Egypt. Alexandria. Hadrian AD 117-138. Drachm Æ 34 mm,  
21,22 g Fine

**1**



**506** Egypt. Alexandria. Antoninus Pius AD 138-161. Billon-  
Tetradrachm 23 mm, 12,13 g Nearly Very Fine

**1**



**507** Egypt. Alexandria. Antoninus Pius AD 138-161. Billon-  
Tetradrachm 23 mm, 11,98 g Nearly Very Fine

**1**



**508** Egypt. Alexandria. Antoninus Pius AD 138-161. Billon-Tetradrachm 24 mm, 11,93 g Very Fine

**1**



**509** Egypt. Alexandria. Antoninus Pius AD 138-161. Billon-Tetradrachm 23 mm, 12,68 g Very Fine

**1**



**510** Egypt. Alexandria. Antoninus Pius AD 138-161. Billon-Tetradrachm 22 mm, 12,86 g Very Fine

**1**



**511** Egypt. Alexandria. Antoninus Pius AD 138-161. Diobol Æ 24 mm, 9,80 g Very Fine

**1**



**512** Egypt. Alexandria. Lucius Verus AD 161-169. Drachm Æ 31 mm, 18,53 g Fine

**1**



**513** Egypt. Alexandria. Marcus Aurelius AD 161-180. Billon-Tetradrachm 22 mm, 12,23 g Very Fine

**1**



**514** Anonymous 208 BC. Second Punic War. Uncertain mint in southeast Italy As Æ 39 mm, 63,88 g Very Fine

**1**



**515** Q. Titius 90 BC. Rome Quinarius AR 15 mm, 1,90 g Good Fine

**1**



**516** The Caesarians. Julius Caesar 46 BC. Rome Dupondius Æ 29 mm, 15,03 g Nearly Very Fine

**1**



**517** Mark Antony 32-31 BC. Military mint moving with M.Antony Denarius AR 20 mm, 3,11 g Fine

**1**



**518** Mark Antony 32-31 BC. Military mint moving with M.Antony Denarius AR 18 mm, 3,23 g Fine

**1**



**519** Mark Antony 32-31 BC. Military mint moving with M.Antony Denarius AR 17 mm, 2,98 g Fine

**1**



**520** Mark Antony 32-31 BC. Military mint moving with M.Antony Denarius AR 17 mm, 3,10 g Fine

**1**



**521** Mark Antony 32-31 BC. Military mint moving with M.Antony Denarius AR 19 mm, 3,20 g Fine

**1**



**522** Mark Antony 32-31 BC. Military mint moving with M.Antony  
Denarius AR 17 mm, 3,0818 g Fine

**1**



**523** Mark Antony 32-31 BC. Military mint moving with M.Antony  
Denarius AR 17 mm, 3,47 g Fine

**1**



**524** Mark Antony 32-31 BC. Military mint moving with M.Antony  
Denarius AR 17 mm, 3,21 g Fine

**1**



**525** Mark Antony 32-31 BC. Military mint moving with M.Antony  
Denarius AR 17 mm, 3,40 g Fine

**1**



**526** Augustus 27 BC-AD 14. Rome As AE 25 mm, 9,11 g Good  
Fine

**1**



**527** Augustus 27 BC-AD 14. Rome As AE 27 mm, 9,69 g Good  
Fine

**1**



**528** Augustus 27 BC-AD 14. Rome As AE 27 mm, 8,92 g Fine

**1**





**529** Divus Augustus AD 14. Rome As Æ 28 mm, 9,45 g Fine

**1**



**530** Drusus, son of Tiberius AD 22-23. Rome As Æ 28 mm, 9,73 g Fine

**1**



**531** Drusus, son of Tiberius AD 22-23. Rome As Æ 27 mm, 10,63 g Fine

**1**



**532** Germanicus AD 37-41. Rome As Æ 27 mm, 8,74 g Fine

**1**



**533** Germanicus AD 37-41. Rome As Æ 30 mm, 10,15 g Fine

**1**



**534** Germanicus AD 37-41. Rome As Æ 26 mm, 9,81 g Fine

**1**



**535** Claudius AD 41-54. Rome Quadrans Æ 19 mm, 3,87 g Very Fine

**1**



**536** Nero AD 54-68. Rome As Æ 26 mm, 9,61 g Fine

**1**



**537** Nero AD 54-68. Rome Semis Æ 17 mm, 4,08 g Very Fine

**1**



**538** Vespasian AD 69-79. Rome Dupondius Æ 27 mm, 11,88 g Fine

**1**



**539** Vespasian AD 69-79. Rome As Æ 31 mm, 9,51 g Fine

**1**



**540** Domitian AD 81-96. Rome As Æ 29 mm, 9,81 g Fine

**1**



**541** Time of Domitian to Antoninus Pius AD 81-161. Rome Anonymous Quadrans Æ 14 mm, 1,35 g Good Fine

**1**



**542** Nerva AD 96-98. Rome Denarius AR 19 mm, 2,91 g Fine

**1**



**543** Trajan AD 98-117. Rome Sestertius Æ 34 mm, 24,92 g Fine **1**



**544** Trajan AD 98-117. Rome Sestertius Æ 34 mm, 24,57 g Fine **1**



**545** Trajan AD 98-117. Rome Dupondius Æ 28 mm, 14,65 g Nearly Very Fine **1**



**546** Trajan AD 98-117. Rome Dupondius Æ 24 mm, 8,16 g Nearly Very Fine **1**



**547** Trajan AD 98-117. Rome Dupondius Æ 27 mm, 11,10 g Fine **1**



**548** Trajan AD 98-117. Rome Quadrans Æ 16 mm, 2,24 g Very Fine **1**



**549** Hadrian AD 117-138. Rome Denarius AR 18 mm, 2,40 g Fine **1**



**550** Hadrian AD 117-138. Rome As Æ 25 mm, 8,60 g Fine

**1**



**551** Hadrian AD 117-138. Rome As Æ 25 mm, 10,30 g Very Fine

**1**



**552** Hadrian AD 117-138. Rome As Æ 27 mm, 11,22 g Fine

**1**



**553** Hadrian AD 117-138. Rome Quadrans Æ 17 mm, 2,52 g Very Fine

**1**



**554** Hadrian AD 117-138. Rome Semis Æ 15 mm, 3,54 g Nearly Very Fine

**1**



**555** Antoninus Pius AD 138-161. Rome Foureé Denarius Æ 18 mm, 2,93 g Nearly Very Fine

**1**



**556** Antoninus Pius AD 138-161. Rome Sestertius Æ 30 mm, 20,04 g Fine

**1**





**557** Diva Faustina I AD 140-141. Rome Sestertius Æ 34 mm, 26,83 g Good Fine

**1**



**558** Diva Faustina I AD 140-141. Rome Sestertius Æ 33 mm, 31,70 g Fine

**1**



**559** Diva Faustina I AD 140-141. Rome Sestertius Æ 32 mm, 23,43 g Fine

**1**



**560** Diva Faustina I AD 140-141. Rome Sestertius Æ 32 mm, 23,32 g Fine

**1**



**561** Faustina II AD 147-175. Rome Sestertius Æ 31 mm, 19,94 g Fine

**1**



**562** Lucius Verus AD 161-169. Rome Sestertius Æ 33 mm, 21,49 g Fine

**1**



**563** Lucius Verus AD 161-169. Rome As Æ 26 mm, 8,90 g Fine

**1**



**564** Marcus Aurelius AD 161-180. Rome Sestertius Æ 30 mm, 18,99 g Fine

**1**



**565** Marcus Aurelius AD 161-180. Rome Sestertius Æ 31 mm, 28,26 g Fine

**1**



**566** Marcus Aurelius AD 161-180. Rome Sestertius Æ 31 mm, 25,36 g Fine

**1**



**567** Lucilla AD 164-182. Rome As Æ 31 mm, 20,42 g Fine

**1**



**568** Crispina. Augusta AD 178-182. Rome As Æ 24 mm, 8,14 g Fine

**1**



**569** Commodus AD 180-192. Rome Sestertius Æ 28 mm, 18,75 g Good Fine

**1**



**570** Commodus AD 180-192. Rome Sestertius Æ 31 mm, 21,52 g Fine

**1**



**571** Septimius Severus AD 193-211. Rome Denarius AR 19 mm, 2,65 g Very Fine

**1**



**572** Septimius Severus AD 193-211. Rome Denarius AR 18 mm, 2,87 g Very Fine

**1**



**573** Septimius Severus AD 193-211. Rome Denarius AR 16 mm, 3,44 g Very Fine

**1**



**574** Septimius Severus AD 193-211. Rome Sestertius Æ 31 mm, 22,75 g Fine

**1**



**575** Caracalla AD 198-217. Rome Denarius AR 19 mm, 2,97 g Very Fine

**1**



**576** Elagabal AD 218-222. Rome Denarius AR 20 mm, 2,41 g Very Fine

**1**



**577** Severus Alexander AD 222-235. Rome Sestertius Æ 30 mm, 15,84 g Fine

**1**



**578** Severus Alexander AD 222-235. Rome Sestertius Æ 30 mm,  
17,98 g Fine

**1**



**579** Severus Alexander AD 222-235. Rome Sestertius Æ 30 mm,  
17,12 g Nearly Very Fine

**1**



**580** Maximus, Caesar AD 236-238. Rome Sestertius Æ 31 mm,  
18,39 g Fine

**1**



**581** Gordian III AD 238-244. Antioch Antoninianus AR 22 mm,  
4,29 g Very Fine

**1**



**582** Otacilia Severa AD 244-249. Rome Sestertius Æ 29 mm,  
20,92 g Nearly Very Fine

**1**



**583** Philip I Arab AD 244-249. Rome Antoninianus AR 22 mm,  
2,98 g Very Fine

**1**



**584** Philip I Arab AD 244-249. Rome Antoninianus Æ 24 mm,  
3,66 g Very Fine

**1**





**585** Trajan Decius AD 249-251. Rome Sestertius Æ 28 mm, 15,44 g Nearly Very Fine

**1**



**586** Trebonianus Gallus AD 251-253. Antioch Billon Antoninianus 22 mm, 3,48 g Very Fine

**1**



**587** Trebonianus Gallus AD 251-253. Antioch Billon Antoninianus 23 mm, 2,99 g Nearly Very Fine

**1**



**588** Trebonianus Gallus AD 251-253. Rome Sestertius Æ 28 mm, 12,95 g Fine

**1**



**589** Gallienus AD 253-268. Antioch Billon Antoninianus 21 mm, 3,44 g Very Fine

**1**



**590** Gallienus AD 253-268. Antioch Billon Antoninianus 20 mm, 3,75 g Very Fine

**1**



**591** Gallienus AD 253-268. Antioch Antoninianus Æ 22 mm, 3,65 g Very Fine

**1**



**592** Gallienus AD 253-268. Rome Billon Antoninianus 21 mm, 3,26 g Nearly Very Fine

**1**



**593** Gallienus AD 253-268. Rome Antoninianus Æ 20 mm, 2,38 g Very Fine

**1**



**594** Gallienus AD 253-268. Rome Antoninianus Æ 21 mm, 3,58 g Very Fine

**1**



**595** Gallienus AD 253-268. Rome Antoninianus Æ 20 mm, 3,31 g Very Fine

**1**



**596** Gallienus AD 253-268. Rome Antoninianus Æ 21 mm, 3,07 g Very Fine

**1**



**597** Gallienus AD 253-268. Rome Antoninianus Æ 20 mm, 2,45 g Very Fine

**1**



**598** Gallienus AD 253-268. Rome Antoninianus Æ 24 mm, 3,97 g Very Fine

**1**



**599** Valerian I AD 253-260. Antioch Billon Antoninianus 22 mm, 2,98 g Very Fine

**1**



**600** Valerian I AD 253-260. Rome Antoninianus Æ 22 mm, 3,54 g Very Fine

**1**



**601** Valerian I AD 253-260. Samosata Billon Antoninianus 22 mm, 4,26 g Very Fine

**1**



**602** Valerian II, Caesar AD 256-257. Samosata Billon Antoninianus 25 mm, 4,10 g Nearly Very Fine

**1**



**603** Saloninus, as Caesar AD 258-260. Samosata Billon Antoninianus 21 mm, 3,31 g Nearly Very Fine

**1**



**604** Postumus, Usurper in Gaul AD 260-269. Treveri Antoninianus AR 22 mm, 3,09 g Very Fine

**1**



**605** Claudius II (Gothicus) AD 268-270. Antioch Billon Antoninianus 20 mm, 3,43 g Very Fine

**1**



**606** Claudius II (Gothicus) AD 268-270. Cyzicus Antoninianus Æ 22 mm, 2,48 g Nearly Very Fine

**1**



**607** Aurelian AD 270-275. Serdica Antoninianus Æ 20 mm, 3,17 g Very Fine

**1**



**608** Aurelian AD 270-275. Siscia Antoninianus Æ 22 mm, 3,18 g Very Fine

**1**



**609** Aurelian and Vabalathus AD 270-275. Antioch Antoninianus Æ 20 mm, 3,65 g Very Fine

**1**



**610** Aurelian and Vabalathus AD 270-275. Antioch Antoninianus Æ 20 mm, 3,71 g Very Fine

**1**



**611** Aurelian and Vabalathus AD 270-275. Antioch Antoninianus Æ 20 mm, 3,59 g Very Fine

**1**



**612** Divus Claudius II (Gothicus) AD 270. Rome Follis Æ 17 mm, 2,00 g Nearly Very Fine

**1**





**613** Probus AD 276-282. Antioch Antoninianus Æ silvered 23 mm, 4,02 g Very Fine

**1**



**614** Probus AD 276-282. Antioch Antoninianus Æ silvered 22 mm, 3,29 g Very Fine

**1**



**615** Probus AD 276-282. Ticinum Billon Antoninianus 24 mm, 4,21 g Very Fine

**1**



**616** Carinus AD 283-285. Antioch Antoninianus Æ 22 mm, 4,76 g Nearly Very Fine

**1**



**617** Numerian AD 283-284. Antioch Antoninianus Æ 20 mm, 4,13 g Nearly Very Fine

**1**



**618** Diocletian AD 284-305. Antioch Antoninianus Æ silvered 22 mm, 3,23 g Nearly Very Fine

**1**



**619** Diocletian AD 284-305. Antioch Follis Æ 26 mm, 9,63 g Very Fine

**1**



**620** Diocletian AD 284-305. Antioch Radiatus Æ 22 mm, 2,78 g  
Very Fine

**1**



**621** Diocletian AD 284-305. Heraclea Follis Æ 28 mm, 10,48 g  
Very Fine

**1**



**622** Diocletian AD 284-305. Rome Billon Antoninianus 22 mm,  
3,68 g Extremely Fine

**1**



**623** Diocletian AD 284-305. Rome Radiatus Æ 20 mm, 2,77 g  
Very Fine

**1**



**624** Diocletian AD 284-305. Serdica Follis Æ 28 mm, 7,83 g Very  
Fine

**1**



**625** Diocletian AD 284-305. Thessaloniki Follis Æ 28 mm, 10,47  
g Very Fine

**1**



**626** Diocletian AD 284-305. Thessaloniki Follis Æ silvered 9,37  
mm, 28 g Very Fine

**1**



**627** Maximianus Herculeus AD 286-305. Alexandria Radiatus Æ 21 mm, 3,95 g Very Fine

**1**



**628** Maximianus Herculeus AD 286-305. Cyzicus Radiatus Æ 21 mm, 3,63 g Very Fine

**1**



**629** Maximianus Herculeus AD 286-305. Heraclea Follis Æ 29 mm, 11,54 g Very Fine

**1**



**630** Constantius I Chlorus, as Caesar AD 293-305. Alexandria Follis Æ 27 mm, 10,29 g Very Fine

**1**



**631** Constantius I Chlorus, as Caesar AD 293-305. Cyzicus Follis Æ 27 mm, 9,60 g Very Fine

**1**



**632** Constantius I Chlorus, as Caesar AD 293-305. Cyzicus Follis Æ 30 mm, 9,95 g Very Fine

**1**



**633** Constantius I Chlorus, as Caesar AD 293-305. Rome Follis Æ 29 mm, 11,15 g Very Fine

**1**



**634** Constantius I Chlorus, as Caesar AD 293-305. Rome Follis Æ  
28 mm, 9,73 g Very Fine

**1**



**635** Constantius I Chlorus, as Caesar AD 293-305. Siscia Follis Æ  
29 mm, 9,10 g Very Fine

**1**



**636** Galerius Maximianus, as Caesar AD 293-305. Heraclea Follis  
Æ 28 mm, 10,87 g Very Fine

**1**



**637** Galerius Maximianus, as Caesar AD 293-305. Rome Follis Æ  
silvered 28 mm, 10,30 g Very Fine

**1**



**638** Galerius Maximianus AD 305-311. Alexandria Follis Æ 24  
mm, 6,60 g Very Fine

**1**



**639** Galerius Maximianus AD 305-311. Antioch Follis Æ 28 mm,  
10,44 g Very Fine

**1**



**640** Galerius Maximianus AD 305-311. Cyzicus Follis Æ 25 mm,  
6,14 g Very Fine

**1**





**641** Maximianus Herculeus, as Senior Augustus AD 305-307. Treveri Follis Æ silvered 31 mm, 10,04 g Very Fine

**1**



**642** Maximinus II Daia, as Caesar AD 305-308. "IMP C GAL VAL MAXIMINVS P F INV AVG" sic. Heraclea Follis Æ silvered 22 mm, 4,51 g Very Fine

**1**



**643** Maximinus II Daia, as Caesar AD 305-308. Rome Follis Æ silvered 28 mm, 9,81 g Very Fine

**1**



**644** Constantine I the Great AD 306-337. Alexandria Follis Æ 19 mm, 2,59 g Very Fine

**1**



**645** Constantine I the Great AD 306-337. Antioch Follis Æ 20 mm, 2,79 g Good Very Fine

**1**



**646** Constantine I the Great AD 306-337. Antioch Follis Æ 17 mm, 2,16 g Very Fine

**1**



**647** Constantine I the Great AD 306-337. Arelate (Arles) Follis Æ 20 mm, 3,17 g Very Fine

**1**



**648** Constantine I the Great AD 306-337. Arelate (Arles) Follis Æ  
20 mm, 3,12 g Very Fine

**1**



**649** Constantine I the Great AD 306-337. Constantinople Follis  
Æ 20 mm, 3,34 g Nearly Very Fine

**1**



**650** Constantine I the Great AD 306-337. Constantinople Follis  
Æ 20 mm, 3,27 g Very Fine

**1**



**651** Constantine I the Great AD 306-337. Constantinople Follis  
Æ 20 mm, 3,60 g Good Very Fine

**1**



**652** Constantine I the Great AD 306-337. Constantinople Follis  
Æ 20 mm, 3,52 g Good Very Fine

**1**



**653** Constantine I the Great AD 306-337. Constantinople Follis  
Æ 19 mm, 2,68 g Nearly Very Fine

**1**



**654** Constantine I the Great AD 306-337. Cyzicus Follis Æ 20  
mm, 2,22 g Very Fine

**1**



**655** Constantine I the Great AD 306-337. Cyzicus Follis Æ 19 mm, 3,41 g Very Fine

**1**



**656** Constantine I the Great AD 306-337. Cyzicus Follis Æ 20 mm, 2,61 g Good Fine

**1**



**657** Constantine I the Great AD 306-337. Cyzicus Follis Æ 17 mm, 2,28 g Very Fine

**1**



**658** Constantine I the Great AD 306-337. Heraclea Follis Æ 24 mm, 3,56 g Very Fine

**1**



**659** Constantine I the Great AD 306-337. Heraclea Follis Æ 22 mm, 3,39 g Very Fine

**1**



**660** Constantine I the Great AD 306-337. Heraclea Follis Æ 19 mm, 3,49 g Very Fine

**1**



**661** Constantine I the Great AD 306-337. Heraclea Follis Æ 19 mm, 2,37 g Nearly Very Fine

**1**



**662** Constantine I the Great AD 306-337. Nicomedia Follis Æ 20 mm, 4,13 g Extremely Fine

**1**



**663** Constantine I the Great AD 306-337. Rome Antoninianus Æ 21 mm, 3,10 g Good Fine

**1**



**664** Constantine I the Great AD 306-337. Rome Follis Æ 18 mm, 3,23 g Very Fine

**1**



**665** Constantine I the Great AD 306-337. Rome Follis Æ 18 mm, 2,33 g Good Very Fine

**1**



**666** Constantine I the Great AD 306-337. Rome Follis Æ 21 mm, 3,87 g Very Fine

**1**



**667** Constantine I the Great AD 306-337. Rome Follis Æ 19 mm, 3,33 g Very Fine

**1**



**668** Constantine I the Great AD 306-337. Rome Follis Æ 21 mm, 3,27 g Very Fine

**1**





**669** Constantine I the Great AD 306-337. Siscia Follis Æ 22 mm, 3,96 g Good Very Fine

**1**



**670** Constantine I the Great AD 306-337. Siscia Follis Æ 20 mm, 3,57 g Good Very Fine

**1**



**671** Constantine I the Great AD 306-337. Thessaloniki Follis Æ 15 mm, 1,44 g Very Fine

**1**



**672** Constantine I the Great AD 306-337. Thessaloniki Follis Æ 25 mm, 3,55 g Very Fine

**1**



**673** Constantine I the Great AD 306-337. Thessaloniki Follis Æ 18 mm, 2,63 g Very Fine

**1**



**674** Constantine I the Great AD 306-337. "IMP CONSTANTINVS P F INV AVG" sic. Thessaloniki Follis Æ 21 mm, 3,14 g Very Fine

**1**



**675** Constantine I the Great AD 306-337. Thessaloniki Follis Æ silvered 25 mm, 5,34 g Very Fine

**1**



**676** Constantine I the Great AD 306-337. Ticinum Follis Æ 18 mm, 2,83 g Nearly Extremely Fine, crack

**1**



**677** Constantine I the Great AD 306-337. Treveri Follis Æ 25 mm, 3,83 g Very Fine

**1**



**678** Constantine I the Great AD 306-337. Treveri Follis Æ 19 mm, 3,09 g Very Fine

**1**



**679** Constantine I the Great AD 306-337. Treveri Follis Æ 19 mm, 3,02 g Very Fine

**1**



**680** Maxentius AD 306-312. Ticinum Follis Æ 25 mm, 7,90 g Very Fine

**1**



**681** Constantine I the Great, as Filius Augustorum AD 308-310. Alexandria Follis Æ silvered 25 mm, 6,55 g Very Fine

**1**



**682** Constantine I the Great, as Filius Augustorum AD 308-310. Nicomedia Follis Æ 26 mm, 5,80 g Very Fine

**1**



**683** Licinius I AD 308-324. Alexandria Follis Æ 20 mm, 3,74 g  
Very Fine

**1**



**684** Licinius I AD 308-324. Alexandria Follis Æ 24 mm, 7,52 g  
Very Fine

**1**



**685** Licinius I AD 308-324. Alexandria Follis Æ 19 mm, 2,90 g  
Nearly Very Fine

**1**



**686** Licinius I circa AD 308-324. Cyzicus Follis Æ 23 mm, 3,87 g  
Good Very Fine

**1**



**687** Licinius I AD 308-324. Heraclea Follis Æ 23 mm, 3,15 g  
Good Very Fine

**1**



**688** Licinius I AD 308-324. Nicomedia Follis Æ 21 mm, 3,98 g  
Good Very Fine

**1**



**689** Licinius I AD 308-324. Nicomedia Follis Æ 20 mm, 2,85 g  
Very Fine

**1**



**690** Licinius I AD 308-324. Rome Follis Æ 20 mm, 3,25 g Nearly Very Fine

**1**



**691** Licinius I AD 308-324. Siscia Follis Æ 22 mm, 3,63 g Good Very Fine

**1**



**692** Licinius I AD 308-324. Siscia Follis Æ 21 mm, 3,66 g Very Fine

**1**



**693** Licinius I AD 308-324. Thessaloniki Follis Æ 25 mm, 3,72 g Very Fine

**1**



**694** Licinius I AD 308-324. Thessaloniki Follis Æ 25 mm, 4,62 g Very Fine

**1**



**695** Maximinus II Daia, as Fillus Augustorum AD 309-310. Siscia Follis Æ 25 mm, 6,90 g Very Fine

**1**



**696** Maximinus II Daia AD 310-313. Antioch Follis Æ 21 mm, 4,99 g Good Very Fine

**1**





**697** Maximinus II Daia AD 310-313. Cyzicus Follis Æ 22 mm, 3,42 g Very Fine

**1**



**698** Maximinus II Daia AD 310-313. Cyzicus Follis Æ 23 mm, 6,42 g Good Very Fine

**1**



**699** Maximinus II Daia AD 310-313. Nicomedia Follis Æ 23 mm, 6,78 g Very Fine

**1**



**700** Maximinus II Daia AD 310-313. Nicomedia Follis Æ 21 mm, 4,64 g Nearly Very Fine

**1**



**701** Crispus, as Caesar AD 316-326. Alexandria Follis Æ 20 mm, 3,61 g Very Fine

**1**



**702** Crispus, as Caesar AD 316-326. Antioch Follis Æ 21 mm, 3,80 g Very Fine

**1**



**703** Crispus, as Caesar AD 316-326. Siscia Follis Æ 20 mm, 3,36 g Very Fine

**1**



**704** Crispus, as Caesar AD 316-326. Siscia Follis Æ 21 mm, 3,70 g Good Very Fine

**1**



**705** Crispus, as Caesar AD 316-326. Treveri Follis Æ 20 mm, 2,70 g Very Fine

**1**



**706** Crispus, as Caesar AD 316-326. Treveri Follis Æ 22 mm, 3,46 g Very Fine

**1**



**707** Constantine II, as Caesar AD 317-337. Alexandria Follis Æ 19 mm, 3,08 g Very Fine

**1**



**708** Constantine II, as Caesar AD 317-337. Cyzicus Follis Æ 20 mm, 3,04 g Very Fine

**1**



**709** Constantine II, as Caesar AD 317-337. Heraclea Follis Æ 18 mm, 3,33 g Nearly Very Fine

**1**



**710** Constantine II, as Caesar AD 317-337. Rome Follis Æ 19 mm, 3,46 g Nearly Very Fine

**1**



**711** Constantine II, as Caesar AD 317-337. Treveri Follis Æ 21 mm, 2,35 g Very Fine

**1**



**712** Licinius II, as Caesar AD 317-324. Alexandria Follis Æ 20 mm, 3,33 g Very Fine

**1**



**713** Helena Augusta AD 324-329. Nicomedia Follis Æ 19 mm, 2,60 g Very Fine

**1**



**714** City Commemoratives AD 330-354. Alexandria Follis Æ 18 mm, 2,51 g Very Fine

**1**



**715** City Commemoratives AD 330-354. Antioch Follis Æ 15 mm, 1,54 g Very Fine

**1**



**716** City Commemoratives AD 330-354. Antioch Follis Æ 19 mm, 2,45 g Very Fine

**1**



**717** City Commemoratives AD 330-354. Constantinople Follis Æ 15 mm, 1,10 g Fine

**1**



**718** City Commemoratives AD 330-354. Treveri Follis Æ 16 mm, 2,09 g Very Fine

**1**



**719** City Commemoratives AD 330-354. Uncertain mint Follis Æ 16 mm, 2,42 g Very Fine

**1**



**720** Delmatius, as Caesar AD 335-337. Constantinople Follis Æ 17 mm, 1,55 g Very Fine

**1**



**721** Delmatius, as Caesar AD 335-337. Heraclea Follis Æ 17 mm, 1,54 g Very Fine

**1**



**722** Constans AD 337-350. Alexandria Follis Æ 16 mm, 1,51 g Very Fine

**1**



**723** Constans AD 337-350. Thessaloniki Follis Æ 16 mm, 1,67 g Nearly Very Fine

**1**



**724** Constans AD 337-350. Thessaloniki Follis Æ 16 mm, 1,78 g Nearly Very Fine

**1**





**725** Constantius II, as Caesar AD 337-347. Alexandria Follis Æ 19 mm, 2,99 g Very Fine

**1**



**726** Constantius II, as Caesar AD 337-347. Antioch Follis Æ 18 mm, 3,16 g Very Fine

**1**



**727** Constantius II, as Caesar AD 337-347. Antioch Follis Æ 19 mm, 2,21 g Very Fine

**1**



**728** Constantius II, as Caesar AD 337-347. Siscia Follis Æ 16 mm, 1,57 g Very Fine

**1**



**729** Divus Constantine I AD 337. Alexandria Follis Æ 16 mm, 1,72 g Very Fine

**1**



**730** Theodora (second wife of Constantius I) AD 337-340. Treveri Follis Æ 15 mm, 1,55 g Very Fine

**1**



**731** Constantius II AD 347-361. Antioch Follis Æ 25 mm, 5,22 g Nearly Very Fine

**1**



**732** Constantius II AD 347-361. Antioch Follis Æ 15 mm, 2,02 g  
Very Fine

**1**



**733** Constantius II AD 347-361. Cyzicus Follis Æ 18 mm, 2,02 g  
Very Fine

**1**



**734** Constantius II AD 347-361. Cyzicus Follis Æ 14 mm, 1,64 g  
Nearly Very Fine

**1**



**735** Constantius II AD 347-361. Cyzicus Follis Æ 15 mm, 2,53 g  
Very Fine

**1**



**736** Constantius II AD 347-361. Heraclea Follis Æ 14 mm, 1,63 g  
Nearly Very Fine

**1**



**737** Constantius II AD 347-361. Siscia Follis Æ 18 mm, 2,32 g  
Nearly Very Fine

**1**



**738** Constantius II AD 347-361. Siscia Follis Æ 19 mm, 1,77 g  
Good Fine

**1**



**739** Constantius II AD 347-361. Uncertain mint Follis Æ 15 mm, 1,47 g Very Fine

**1**



**740** Constantius Gallus, Caesar AD 351-354. Sirmium Follis Æ 20 mm, 3,68 g Very Fine

**1**



**741** Jovian AD 363-364. Antioch Double Maiorina Æ 28 mm, 10,06 g Nearly Very Fine

**1**



**742** Valentinian I AD 364-375. Constantinople Follis Æ 23 mm, 5,34 g Very Fine

**1**



**743** Gratian AD 375-383. Cyzicus Follis Æ 24 mm, 4,61 g Nearly Very Fine

**1**



**744** Gratian AD 375-383. Heraclea Follis Æ 18 mm, 2,39 g Very Fine

**1**



**745** Theodosius I AD 379-395. Alexandria Follis Æ 21 mm, 6,17 g Very Fine

**1**



**746** Theodosius I AD 379-395. Antioch Follis Æ 23 mm, 4,63 g  
Nearly Very Fine

**1**



**747** Theodosius I AD 379-395. Antioch Follis Æ 25 mm, 5,51 g  
Nearly Very Fine

**1**



**748** Theodosius I AD 379-395. Constantinople Follis Æ 23 mm,  
4,70 g Nearly Very Fine

**1**



**749** Theodosius I AD 379-395. Cyzicus Follis Æ 22 mm, 5,00 g  
Nearly Very Fine

**1**



**750** Theodosius I AD 379-395. Thessaloniki Follis Æ 22 mm, 5,22  
g Very Fine

**1**



**751** Theodosius I AD 379-395. Thessaloniki Follis Æ 22 mm, 5,88  
g Very Fine

**1**



**752** Theodosius I AD 379-395. Thessaloniki Follis Æ 23 mm, 4,58  
g Nearly Very Fine

**1**





**753** Aelia Flacilla AD 383-386. Alexandria Follis Æ 24 mm, 4,73 g Fine

**1**



**754** Aelia Flacilla AD 383-386. Constantinople Follis Æ 22 mm, 5,97 g Good Fine

**1**



**755** Aelia Flacilla AD 383-386. Constantinople Follis Æ 22 mm, 5,58 g Good Fine

**1**



**756** Arcadius AD 383-408. Alexandria Follis Æ 24 mm, 4,93 g Very Fine

**1**



**757** Arcadius AD 383-408. Antioch Follis Æ 17 mm, 2,42 g Nearly Very Fine

**1**



**758** Arcadius AD 383-408. Antioch Follis Æ 23 mm, 5,50 g Nearly Very Fine

**1**



**759** Arcadius AD 383-408. Constantinople Follis Æ 23 mm, 5,70 g Nearly Very Fine

**1**



**760** Honorius AD 393-423. Contemporary barbaric imitation Nummus Æ 11 mm, 0,85 g Very Fine

**1**



**761** Honorius AD 393-423. Mediolanum Siliqua AR 13 mm, 0,90 g Very Fine

**1**



**762** Honorius AD 393-423. Uncertain mint Nummus Æ 11 mm, 0,98 g Fine

**1**



**763** Theodosius II AD 402-450. Uncertain mint Nummus Æ 13 mm, 1,45 g Fine

**1**



**764** Zeno, second reign AD 476-491. Uncertain mint Nummus Æ 9 mm, 0,37 g Good Fine

**1**



**765** Justin I AD 518-527. Antioch Pentanummium Æ 12 mm, 1,38 g Very Fine

**1**



**766** Justinian I AD 527-565. Antioch Pentanummium Æ 17 mm, 2,43 g Very Fine

**1**



**767** Justinian I AD 527-565. Theoupolis (Antioch) Decanummium  
Æ 22 mm, 3,94 g Good Fine

**1**



**768** Justin II AD 565-578. Nikomedia Pentanummium Æ 13 mm,  
2,03 g Nearly Very Fine

**1**



**769** Justin II and Sophia AD 565-578. Constantinople Follis or 40  
Nummi Æ 30 mm, 15,39 g Very Fine

**1**



**770** Justin II and Sophia AD 565-578. Theoupolis (Antioch) Follis  
or 40 Nummi Æ 33 mm, 14,64 g Nearly Very Fine

**1**



**771** Maurice Tiberius AD 582-602. Constantinople  
Decanummium Æ 22 mm, 3,26 g Nearly Very Fine

**1**



**772** Maurice Tiberius AD 582-602. Nikomedia Follis or 40 Nummi  
Æ 30 mm, 9,60 g Fine

**1**



**773** Maurice Tiberius AD 582-602. Theoupolis (Antioch) Follis or  
40 Nummi Æ 32 mm, 11,75 g Nearly Very Fine

**1**



**774** Maurice Tiberius AD 582-602. Theoupolis (Antioch) Follis or 40 Nummi Æ 29 mm, 11,78 g Very Fine

**1**



**775** Maurice Tiberius AD 582-602. Theoupolis (Antioch) Follis or 40 Nummi Æ 31 mm, 11,59 g Very Fine

**1**



**776** Phocas AD 602-610. Theoupolis (Antioch) Follis or 40 Nummi Æ 27 mm, 10,25 g Very Fine

**1**



**777** Constans II AD 641-668. Constantinople Follis or 40 Nummi Æ 19 mm, 2,68 g Very Fine

**1**



**778** Constans II AD 641-668. Constantinople Follis or 40 Nummi Æ 23 mm, 4,55 g Very Fine

**1**



**779** Constans II AD 641-668. Constantinople Follis or 40 Nummi Æ 22 mm, 3,08 g Very Fine

**1**



**780** Constantine V Copronymus, with Leo IV and Leo III AD 741-775. Syracuse Follis Æ 18 mm, 1,98 g Very Fine

**1**





**781** Leo V the Armenian, with Constantine AD 813-820.  
Syracuse Follis Æ 17 mm, 3,23 g Very Fine

**1**



**782** Alexius I Comnenus AD 1081-1118. Constantinople  
Anonymous Follis Æ 26 mm, 7,74 g Fine

**1**



**783** Manuel I Comnenus AD 1143-1180. Constantinople Trachy  
Æ 29 mm, 4,21 g Very Fine

**1**



**784** Manuel I Comnenus AD 1143-1180. Constantinople Trachy  
Æ 23 mm, 2,79 g Very Fine

**1**



**785** Andronicus I Comnenus AD 1183-1185. Constantinople  
Trachy Æ 28 mm, 4,11 g Nearly Very Fine

**1**



**786** Alexius III Angelus-Comnenus AD 1195-1203.  
Constantinople Trachy Æ 29 mm, 3,05 g Very Fine

**1**



**787** Alexius III Angelus-Comnenus AD 1195-1203.  
Constantinople Trachy Æ 26 mm, 3,41 g Very Fine

**1**



**788** Alexius III Angelus-Comnenus AD 1195-1203.  
Constantinople Trachy Æ 22 mm, 2,06 g Very Fine

**1**



**789** Latin Rulers of Constantinople AD 1204-1261.  
Constantinople Trachy Æ 20 mm, 1,50 g Very Fine

**1**



**790** Andronicus III Palaeologus AD 1328-1341. Constantinople  
Assarion Æ 22 mm, 2,11 g Nearly Very Fine

**1**



**791** Italy. Venezia (Venice). Antonio Venier AD 1382-1400.  
Grosso AR 22 mm, 1,79 g Very Fine

**1**



**792** Italy. Venezia (Venice). Francesco Foscari AD 1423-1457.  
Soldino AR 13 mm, 0,27 g Very Fine

**1**



**793** Cilician Armenia. Levon I AD 1198-1219. Tank Æ 28 mm,  
6,96 g Very Fine

**1**



**794** Cilician Armenia. Hetoum I AD 1226-1270. Kardez Æ 26  
mm, 5,16 g Very Fine

**1**



**795** Cilician Armenia. Sis. Hetoum I AD 1226-1270. Tank Æ 30 mm, 5,82 g Very Fine

**1**



**796** Cilician Armenia. Levon III AD 1301-1307. Kardez Æ 19 mm, 1,72 g Good Fine

**1**



**797** Umayyad. . Fals Æ 18 mm, 1,37 g Very Fine

**1**



**798** Umayyad. . Fals Æ 16 mm, 2,32 g Very Fine

**1**



**799** Umayyad. . Fals Æ 18 mm, 2,12 g Good Fine

**1**



**800** Umayyad. . Fals Æ 17 mm, 1,84 g Good Fine

**1**



**801** Umayyad. . Fals Æ 21 mm, 1,97 g Very Fine

**1**



**802** Umayyad. . Fals Æ 16 mm, 0,88 g Good Fine

**1**



**803** Umayyad. . Fals Æ 17 mm, 1,23 g Good Fine

**1**



**804** Umayyad. . Fals Æ 14 mm, 1,25 g Very Fine

**1**



**805** Umayyad. . Fals Æ 15 mm, 2,06 g Very Fine

**1**



**806** Umayyad. . Fals Æ 21 mm, 3,36 g Very Fine

**1**



**807** Umayyad. al-Mawsil mint . governor Of al-Mawsil , Abd al-Ala bin Iyadh , Fals Æ 21 mm, 2,57 g Nearly Very Fine

**1**



**808** Umayyad. Al-Iskandariyyah / Misr . Abd al-Malik AH 65-86. Fals Æ 20 mm, 4,48 g Very Fine

**1**





**809** Abbasid . Isbahan mint. al-Ma'mun AH 194-218. AE DIRHAM  
23 mm, 1,83 g Good Very Fine

**1**



**810** Abbasid . Al Mu'tamid AH 256-279. Struck AH 2\*\* AR  
Dirham 20 mm, 4,83 g Good Fine

**1**



**811** Abbasid . Al-Shash mint. Al Mu'tamid AH 256-279. Struck  
AH 262 AR Dirham 22 mm, 4,94 g Good Very Fine

**1**



**812** Abbasid . Antakiya mint. Al Mu'tamid AH 256-279. AR  
Dirham 25 mm, 3,82 g Good Very Fine

**1**



**813** Abbasid . al-Mu'tadid AH 279-289. Struck AH 279 AR  
Dirham 21 mm, 2,64 g Good Fine

**1**



**814** Abbasid . Wasit mint. al-Muktafi AH 289-295. Struck AH 292  
AR Dirham 23 mm, 4 g Good Very Fine

**1**



**815** Seljuq of Rum. . AR Dirham 21 mm, 2,03 g Good Very Fine

**1**



**816** Seljuq of Rum. Rukn al-Din Sulayman II AH 595-600. Fals Æ  
19 mm, 2,41 g Very Fine

**1**



**817** Seljuq of Rum. Ghiyath al-Din Kay Khusraw II bin Kay  
Qubadh AH 634-644. AR Dirham 13 mm, 1,05 g Good Fine

**1**



**818** Seljuq of Rum. Siwas mint. Ghiyath al-Din Kay Khusraw II  
bin Kay Qubadh AH 634-644. AR Dirham 23 mm, 2,95 g Good  
Very Fine

**1**



**819** Mamluks. Hamah mint AH 693-694. Muhammad I al-Nasir  
Nasir al-Din , 1 st reign AR Dirham 20 mm, 4,15 g Good Very Fine

**1**



**820** Mamluks. al-Nasir Hasan, 1st reign AH 748-752. AR Dirham  
20 mm, 2,88 g Good Very Fine

**1**



**821** Mamluks. Damascus AH 842-857. Jaqmaq al-zahir Abu Said  
AR Dirham 16 mm, 1,69 g Good Very Fine

**1**



**822** Arab-Byzantine . Abila AH 15-23. Fals Æ 28 mm, 10,30 g  
Nearly Very Fine

**1**



**823** Jujids (Golden Horde). Orda mint. Abd Allah AH 762-771.  
Dang AR 18 mm, 1,06 g Very Fine

**1**



**824** Artuqids of Amid & Kayfa. AH 539-570. Fakhr al-Din Qara  
Arslan AE Dirham 28 mm, 6,96 g Good Very Fine

**1**



**825** Persia (Post-Mongol). Eretnids . Dirham AR 19 mm, 1,61 g  
Very Fine

**1**



**826** Persia (Post-Mongol). Eretnids . Dirham AR 21 mm, 1,63 g  
Very Fine

**1**



**827** Persia (Post-Mongol). Eretnids . Dirham AR 21 mm, 1,59 g  
Very Fine

**1**



**828** Persia (Post-Mongol). Eretnids . Dirham AR 19 mm, 1,59 g  
Very Fine

**1**



**829** Persia (Post-Mongol). Eretnids . Dirham AR 19 mm, 1,57 g  
Very Fine

**1**



**830** Persia (Post-Mongol). Eretnids . Dirham AR 19 mm, 1,60 g  
Very Fine

**1**



**831** Persia (Post-Mongol). Eretnids . Dirham AR 22 mm, 1,58 g  
Very Fine

**1**



**832** Persia (Post-Mongol). Eretnids . Dirham AR 19 mm, 1,61 g  
Very Fine

**1**



**833** Persia (Post-Mongol). Eretnids . Dirham AR 19 mm, 1,63 g  
Very Fine

**1**



**834** Persia (Post-Mongol). Eretnids . Dirham AR 21 mm, 1,63 g  
Very Fine

**1**



**835** Persia (Post-Mongol). Eretnids . Dirham AR 22 mm, 1,67 g  
Very Fine

**1**



**836** Persia (Post-Mongol). Eretnids . Dirham AR 19 mm, 1,66 g  
Very Fine

**1**





**837** Persia (Post-Mongol). Eretnids . Dirham AR 20 mm, 1,63 g  
Very Fine

**1**



**838** Persia (Post-Mongol). Eretnids . Dirham AR 20 mm, 1,49 g  
Very Fine

**1**



**839** Persia (Post-Mongol). Eretnids . Dirham AR 19 mm, 1,62 g  
Very Fine

**1**



**840** Persia (Post-Mongol). Eretnids . Dirham AR 20 mm, 1,61 g  
Very Fine

**1**



**841** Persia (Post-Mongol). Eretnids . Dirham AR 21 mm, 1,57 g  
Very Fine

**1**



**842** Persia (Post-Mongol). Eretnids . Dirham AR 20 mm, 1,62 g  
Very Fine

**1**



**843** Persia (Post-Mongol). Eretnids . Dirham AR 20 mm, 1,60 g  
Very Fine

**1**



**844** Persia (Post-Mongol). Eretnids . Dirham AR 19 mm, 1,64 g  
Very Fine

**1**



**845** Persia (Post-Mongol). Eretnids . Dirham AR 19 mm, 1,60 g  
Very Fine

**1**



**846** Persia (Post-Mongol). Eretnids . Dirham AR 21 mm, 1,58 g  
Very Fine

**1**



**847** Persia (Post-Mongol). Eretnids . Dirham AR 20 mm, 1,60 g  
Very Fine

**1**



**848** Persia (Post-Mongol). Eretnids . Dirham AR 20 mm, 1,68 g  
Very Fine

**1**



**849** Persia (Post-Mongol). Eretnids . Dirham AR 18 mm, 1,60 g  
Very Fine

**1**



**850** Persia (Post-Mongol). Eretnids . Dirham AR 19 mm, 1,62 g  
Very Fine

**1**



**851** Persia (Post-Mongol). Eretnids . Dirham AR 20 mm, 1,66 g  
Very Fine

**1**



**852** Persia (Post-Mongol). Eretnids . Dirham AR 19 mm, 1,60 g  
Very Fine

**1**



**853** Persia (Post-Mongol). Eretnids . Dirham AR 20 mm, 1,60 g  
Very Fine

**1**



**854** Persia (Post-Mongol). Eretnids . Dirham AR 20 mm, 1,60 g  
Very Fine

**1**



**855** Persia (Post-Mongol). Eretnids . Dirham AR 21 mm, 1,57 g  
Very Fine

**1**



**856** Buwahyid. . AR Dirham 23 mm, 4,69 g Very Fine

**1**



**857** Ottoman. Halab mint . AR Dirham 17 mm, 1 g Good Very  
Fine

**1**



**858** Ottoman. Bagdad mint AH 974-982. Selim II , Struck AH 974  
AR Dirham 21 mm, 3,66 g Good Very Fine

**1**



**859** Ottoman. Halab mint AH 982-1003. Murad III , struck AH  
982 AR Dirham 20 mm, 3,01 g Good Very Fine

**1**



**860** Ottoman. Halab mint AH 1003-1012. Mehmed III, struck AH  
1003 AR Dirham 23 mm, 2,58 g Good Very Fine

**1**



**861** Ottoman. Halab mint AH 1003-1012. Mehmed III, struck AH  
1003 AR Dirham 22 mm, 2,67 g Good Very Fine

**1**



**862** Ottoman. Halab mint AH 1003-1012. Mehmed III, struck AH  
1003 AR Dirham 20 mm, 2,56 g Good Very Fine

**1**



**863** Ottoman. Halab mint AH 1003-1012. Mehmed III, struck AH  
1003 AR Dirham 23 mm, 2,31 g Good Very Fine

**1**



**864** Ottoman. Halab mint AH 1003-1012. Mehmed III, struck AH  
1003 AR Dirham 20 mm, 2,32 g Good Very Fine

**1**





**865** Ottoman. Halab mint AH 1003-1012. Mehmed III, struck AH 1003 AR Dirham 20 mm, 2,15 g Good Very Fine

**1**



**866** Ottoman. Halab mint AH 1003-1012. Mehmed III, struck AH 1003 AR Dirham 22 mm, 2,60 g Good Very Fine

**1**



**867** Ottoman. Halab mint AH 1003-1012. Mehmed III, struck AH 1003 AR Dirham 24 mm, 2,52 g Good Very Fine

**1**



**868** Ottoman. Halab mint AH 1003-1012. Mehmed III, struck AH 1003 AR Dirham 20 mm, 2,58 g Good Very Fine

**1**



**869** Ottoman. Halab mint AH 1003-1012. Mehmed III, struck AH 1003 AR Dirham 18 mm, 2,14 g Good Very Fine

**1**



**870** Ottoman. Halab mint AH 1003-1012. Mehmed III, struck AH 1003 AR Dirham 18 mm, 2,67 g Good Very Fine

**1**



**871** Ottoman. Halab mint AH 1003-1012. Mehmed III, struck AH 1003 AR Dirham 20 mm, 2,57 g Good Very Fine

**1**



**872** Ottoman. Halab mint AH 1003-1012. Mehmed III, struck AH 1003 AR Dirham 19 mm, 2,54 g Good Very Fine

**1**



**873** Ottoman. Halab mint AH 1003-1012. Mehmed III, struck AH 1003 AR Dirham 20 mm, 2,71 g Good Very Fine

**1**



**874** Ottoman. Halab mint AH 1012-1026. Ahmed I, struck AH 1012 AR Dirham 20 mm, 2,07 g Good Very Fine

**1**



**875** Ottoman. Halab mint AH 1012-1026. Ahmed I, struck AH 1012 AR Dirham 20 mm, 2,40 g Good Very Fine

**1**



**876** Ottoman. Halab mint AH 1012-1026. Ahmed I, struck AH 1012 AR Dirham 22 mm, 2,09 g Good Very Fine

**1**



**877** Ottoman. Halab mint AH 1012-1026. Ahmed I, struck AH 1012 AR Dirham 18 mm, 2,26 g Good Very Fine

**1**



**878** Ottoman. Halab mint AH 1012-1026. Ahmed I, struck AH 1012 AR Dirham 20 mm, 2,36 g Good Very Fine

**1**



**879** Ottoman. Halab mint AH 1012-1026. Ahmed I, struck AH 1012 AR Dirham 21 mm, 2,24 g Good Very Fine

**1**



**880** Ottoman. Halab mint AH 1012-1026. Ahmed I, struck AH 1012 AR Dirham 19 mm, 2,30 g Good Very Fine

**1**



**881** Ottoman. Halab mint AH 1012-1026. Ahmed I, struck AH 1012 AR Dirham 20 mm, 2,25 g Good Very Fine

**1**



**882** Ottoman. Halab mint AH 1012-1026. Ahmed I, struck AH 1012 AR Dirham 20 mm, 2,43 g Good Very Fine

**1**



**883** Ottoman. Halab mint AH 1012-1026. Ahmed I, struck AH 1012 AR Dirham 20 mm, 2,35 g Good Very Fine

**1**



**884** Ottoman. Halab mint AH 1012-1026. Ahmed I, struck AH 1012 AR Dirham 20 mm, 2,25 g Good Very Fine

**1**



**885** Ottoman. Halab mint AH 1012-1026. Ahmed I, struck AH 1012 AR Dirham 21 mm, 2,27 g Good Very Fine

**1**



**886** Ottoman. Halab mint AH 1012-1026. Ahmed I, struck AH 1012 AR Dirham 19 mm, 2,34 g Good Very Fine

**1**



**887** Ottoman. Halab mint AH 1012-1026. Ahmed I, struck AH 1012 AR Dirham 20 mm, 1,54 g Good Very Fine

**1**



**888** Ottoman. Halab mint AH 1012-1026. Ahmed I, struck AH 1012 AR Dirham 20 mm, 2,38 g Good Very Fine

**1**



**889** Ottoman. Halab mint AH 1012-1026. Ahmed I, struck AH 1012 AR Dirham 20 mm, 2,21 g Good Very Fine

**1**



**890** Ottoman. Halab mint AH 1012-1026. Ahmed I, struck AH 1012 AR Dirham 21 mm, 2,12 g Good Very Fine

**1**



**891** Ottoman. Halab mint AH 1012-1026. Ahmed I, struck AH 1012 AR Dirham 20 mm, 2,35 g Good Very Fine

**1**



**892** Ottoman. Halab mint AH 1012-1026. Ahmed I, struck AH 1012 AR Dirham 21 mm, 2,35 g Good Very Fine

**1**





**893** Ottoman. Halab mint AH 1012-1026. Ahmed I, struck AH 1012 AR Dirham 19 mm, 2,22 g Good Very Fine

**1**



**894** Ottoman. Halab mint AH 1012-1026. Ahmed I , struck AH 1012 AR Dirham 20 mm, 2,20 g Good Very Fine

**1**



**895** Ottoman. Halab mint AH 1012-1026. Ahmed I, struck AH 1012 AR Dirham 20 mm, 2,30 g Good Very Fine

**1**



**896** Ottoman. Halab mint AH 1012-1026. Ahmed I, struck AH 1012 AR Dirham 21 mm, 2,25 g Good Very Fine

**1**



**897** Ottoman. Halab mint AH 1012-1026. Ahmed I, struck AH 1012 AR Dirham 19 mm, 2,41 g Good Very Fine

**1**



**898** Ottoman. Halab mint AH 1027-1031. Osman II, Struck AH 1027 AR Dirham 19 mm, 1,30 g Good Very Fine

**1**



**899** Ottoman. Halab mint AH 1027-1031. Osman II, Struck AH 1027 AR Dirham 20 mm, 3,12 g Good Very Fine

**1**



**900** Ottoman. Qustantiniya (Constantinople) AH 1027-1031. Osman II, Struck AH 1027 AR Dirham 21 mm, 3,07 g Good Very Fine

**1**



**901** Ottoman. Uncertain mint AH 1027-1031. Osman II, Struck AH 1027 AR Dirham 20 mm, 2,63 g Good Very Fine

**1**



**902** Ottoman. Uncertain mint AH 1027-1031. Osman II, Struck AH 1027 AR Dirham 19 mm, 1,29 g Good Very Fine

**1**



**903** Ottoman. Van mint AH 1027-1031. Osman II, Struck AH 1027 AR Dirham 18 mm, 1,01 g Good Very Fine

**1**



**904** Ottoman. Halab mint AH 1031-1032. Mustafa I, struck AH 1031 AR Dirham 21 mm, 2,78 g Good Very Fine

**1**



**905** Ottoman. Uncertain mint AH 1031-1032. Mustafa I, struck AH 1031 AR Dirham 20 mm, 3,04 g Good Very Fine

**1**



**906** Ottoman. Uncertain mint AH 1031-1032. Mustafa I, struck AH 1031 AR Dirham 20 mm, 2,80 g Good Very Fine

**1**



**907** Ottoman. Qustantiniya (Constantinople) AH 1106-1115. Mustafa II, Struck AH 1106 AR 30 para 40 mm, 19,08 g Good Very Fine

**1**



**908** Ottoman. Qustantiniya (Constantinople) AH 1115-1143. Ahmed III, struck AH 1115 AR 1 Kurush 38 mm, 26,28 g Good Very Fine

**1**



**909** Ottoman. Qustantiniya (Constantinople) AH 1115-1143. Ahmed III, struck AH 1115 AR 1 Kurush 39 mm, 25,71 g Good Very Fine

**1**



**910** Ottoman. Qustantiniya (Constantinople) AH 1115-1143. Ahmed III , struck AH 1115 AR 1 Kurush 40 mm, 26,12 g Good Very Fine

**1**



**911** Ottoman. Qustantiniya (Constantinople) AH 1115-1143. Ahmed III, struck AH 1115 ARC1 Kurush 40 mm, 26,45 g Good Very Fine

**1**



**912** Ottoman. Qustantiniya (Constantinople) AH 1115-1143. Ahmed III, struck AH 1115 AR 1 Kurush 40 mm, 26,32 g Good Very Fine

**1**



**913** Ottoman. Qustantiniya (Constantinople) AH 1115-1143. Ahmed III, struck AH 1115 AR 1 Kurush 40 mm, 26,70 g Good Very Fine

**1**



**914** Ottoman. Qustantiniya (Constantinople) AH 1115-1143. Ahmed III, struck AH 1115 AR 1 Kurush 40 mm, 25,47 g Good Very Fine

**1**



**915** Ottoman. Qustantiniya (Constantinople) AH 1115-1143. Ahmed III, struck AH 1115 AR 1 Kurush 40 mm, 24,88 g Good Very Fine

**1**



**916** Ottoman. Qustantiniya (Constantinople) AH 1115-1143. Ahmed III, struck AH 1115 AR 1 Kurush 40 mm, 26,32 g Good Very Fine

**1**



**917** Ottoman. Qustantiniya (Constantinople) AH 1115-1143. Ahmed III, struck AH 1115 AR 1 Kurush 38 mm, 25,51 g Good Very Fine

**1**



**918** Ottoman. Qustantiniya (Constantinople) AH 1143-1168. Mahmud I , struck AH 1143 AR 1 Kurush 40 mm, 26,00 g Good Very Fine

**1**



**919** Ottoman. Qustantiniya (Constantinople) AH 1143-1168. Mahmud I, struck AH 1143 AR 20 para 33 mm, 13,04 g Good Very Fine

**1**



**920** Ottoman. Qustantiniya (Constantinople) AH 1143-1168. Mahmud I, struck AH 1143 AR 20 para 32 mm, 13,09 g Good Very Fine

**1**





**921** Ottoman. Qustantiniya (Constantinople) AH 1143-1168. Mahmud I, struck AH 1143 AR 20 para 33 mm, 12,52 g Good Very Fine

**1**



**922** Ottoman. Qustantiniya (Constantinople) AH 1143-1168. Mahmud I, struck AH 1143 AR 1 Kurush 40 mm, 26,16 g Good Very Fine

**1**



**923** Ottoman. Qustantiniya (Constantinople) AH 1143-1168. Mahmud I, struck AH 1143 AR 1 Kurush 41 mm, 26,27 g Good Very Fine

**1**



**924** Ottoman. Qustantiniya (Constantinople) AH 1143-1168. Mahmud I, struck AH 1143 AR 1 Kurush 39 mm, 26,10 g Good Very Fine

**1**



**925** Ottoman. Qustantiniya (Constantinople) AH 1143-1168. Mahmud I, struck AH 1143 AR 1 Kurush 40 mm, 25,91 g Good Very Fine

**1**



**926** Ayyubids. . Al-malik Al-Saeed AR Dirham 21 mm, 2,06 g Good Very Fine

**1**



**927** Ayyubids. Halab mint. al-Nasir Salah al-Din Yusuf I (Saladin) AH 564-589. Struck AH 5\*8 AR Dirham 21 mm, 2,61 g Good Very Fine

**1**



**928** Ayyubids. al-Zahir Ghazi AH 582-613. AR Dirham 21 mm, 2,69 g Good Very Fine

**1**



**929** Ayyubids. Halab mint. al-Zahir Ghazi AH 582-613. AR Dirham 20 mm, 2,54 g Good Very Fine

**1**



**930** Ayyubids. Halab mint. al-Zahir Ghazi AH 582-613. AR Dirham 21 mm, 2,83 g Good Very Fine

**1**



**931** Ayyubids. Dimashq mint. al-Kamil Muhammad I AH 615-635. AR Dirham 22 mm, 2,82 g Good Very Fine

**1**



**932** Ayyubids. Halab mint. al-Nasir Yusuf II AH 634-658. AR Dirham 21 mm, 2,74 g Good Very Fine

**1**



**933** Ayyubids. Halab mint. al-Nasir Yusuf II AH 634-658. AR Dirham 20 mm, 2,62 g Good Very Fine

**1**



**934** Ayyubids. Halab mint. al-Nasir Yusuf II AH 634-658. AR Dirham 21 mm, 2,81 g Good Very Fine

**1**



**935** Ayyubids. Hama mint. al-Nasir Yusuf II AH 634-658. AR Dirham 21 mm, 2,73 g Good Very Fine

**1**



**936** Ayyubids. Dimashq mint. al-Salih Isma'il AH 635-643. AR Dirham 21 mm, 2,67 g Good Very Fine

**1**



**937** Ayyubids. Dimashq mint. al-Salih Isma'il AH 635-643. Caliph al-Mustansir , AH 635 -640 AR Dirham 20 mm, 2,08 g Good Very Fine

**1**



**938** Ayyubids. Dimashq mint. al-Salih Isma'il AH 635-643. Crusader imitation of Ayyubid AR Dirham 21 mm, 3,23 g Good Very Fine

**1**



**939** Ayyubids. Dimashq mint. al-Salih Isma'il AH 635-643. Crusader imitation of Ayyubid AR Dirham 21 mm, 2,82 g Good Very Fine

**1**



**940** Ayyubids. Dimashq mint. al-Salih Isma'il AH 635-643. Crusader imitation of Ayyubid AR Dirham 20 mm, 2,06 g Good Very Fine

**1**



**941** Ayyubids. Dimashq mint. al-Salih Isma'il AH 635-643. Crusader imitation of Ayyubid AR Dirham 20 mm, 3,08 g Good Very Fine

**1**



**942** Ayyubids. Dimashq mint. al-Salih Isma'il AH 635-643. Crusader imitation of Ayyubid AR Dirham 22 mm, 2,95 g Good Very Fine

**1**



**943** Ayyubids. Dimashq mint. al-Salih Isma'il AH 635-643. Crusader imitation of Ayyubid AR Dirham 20 mm, 2,82 g Good Very Fine

**1**



**944** Ayyubids. Dimashq mint. al-Salih Isma'il AH 635-643. With Najm al-Din Ayyub AR Dirham 21 mm, 2,89 g Good Very Fine

**1**



**945** Ayyubids. Dimashq mint. al-Salih Isma'il AH 635-643. Crusader imitation of Ayyubid AR Dirham 21 mm, 2,54 g Good Very Fine

**1**



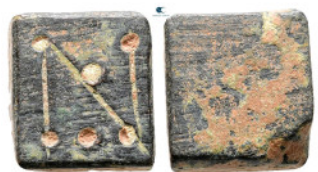
**946** Roman. Plomb Pb 23 mm, 13,17 g Fine

**1**



**947** Byzantine. Weight Æ 14 mm, 3,01 g Fine

**1**



**948** Byzantine. Weight Æ 16 mm, 4,42 g Good Fine

**1**





**949** Byzantine. Weight  $\text{Æ}$  17 mm, 2,69 g Good Fine

**1**



**950** Byzantine. Weight  $\text{Æ}$  18 mm, 4,36 g Good Fine

**1**



**951** Byzantine. Weight  $\text{Æ}$  25 mm, 12,35 g Fine

**1**



**952** Byzantine. Weight  $\text{Æ}$  14 mm, 2,95 g Very Fine

**1**



**953** Byzantine. Weight  $\text{Æ}$  14 mm, 2,12 g Good Fine

**1**



**954** Byzantine. Weight  $\text{Æ}$  17 mm, 3,94 g Fine

**1**



**955** Byzantine. Weight  $\text{Æ}$  24 mm, 16,93 g Nearly Very Fine

**1**



**956** Byzantine. Weight Æ 19 mm, 6,37 g Fine

**1**



**957** Byzantine. Seal Pb 30 mm, 15,95 g Very Fine

**1**



**958** Byzantine. Seal Pb 29 mm, 18,58 g Very Fine

**1**



**959** Islamic. Weight Æ 22 mm, 4,37 g Very Fine

**1**



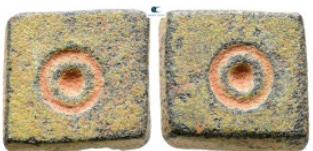
**960** Islamic. Weight Æ 13 mm, 2,56 g Very Fine

**1**



**961** Islamic. Weight Æ 13 mm, 4,21 g Very Fine

**1**



**962** Islamic. Weight Æ 16 mm, 5,69 g Nearly Very Fine

**1**



**963** Islamic. Weight Æ 15 mm, 3,88 g Nearly Very Fine

**1**



**964** Islamic. Weight Æ 18 mm, 5,68 g Nearly Very Fine

**1**



**965** Islamic. Weight Æ 16 mm, 5,80 g Very Fine

**1**



**966** Islamic. Weight Æ 16 mm, 3,98 g Very Fine

**1**



**967** Islamic. Weight Æ 16 mm, 5,94 g Nearly Very Fine

**1**



**968** Islamic. Weight Æ 17 mm, 5,70 g Fine

**1**



**969** Islamic. Weight Æ 15 mm, 8,02 g Nearly Very Fine

**1**



**970** Islamic. Weight  $\text{Æ}$  13 mm, 2,82 g Very Fine

**1**



**971** Islamic. Weight  $\text{Æ}$  16 mm, 5,84 g Nearly Very Fine

**1**



**972** Islamic. Weight  $\text{Æ}$  18 mm, 25,81 g Nearly Very Fine

**1**



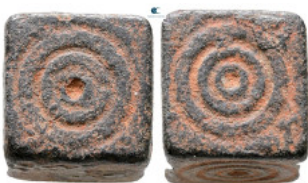
**973** Islamic. Weight  $\text{Æ}$  16 mm, 14,67 g Very Fine

**1**



**974** Islamic. Weight  $\text{Æ}$  16 mm, 14,62 g Very Fine

**1**



**975** Islamic. Weight  $\text{Æ}$  19 mm, 12,89 g Nearly Very Fine

**1**



**976** Islamic. Weight  $\text{Æ}$  13 mm, 8,33 g Very Fine

**1**





**977** Islamic. Weight Æ 17 mm, 14,62 g Very Fine

**1**



**978** Islamic. Weight Æ 20 mm, 28,91 g Good Very Fine

**1**



**979** Islamic. Weight Æ 20 mm, 29,20 g Nearly Very Fine

**1**



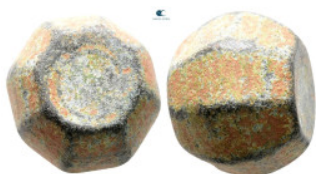
**980** Islamic. Weight Æ 20 mm, 29,23 g Very Fine

**1**



**981** Islamic. Weight Æ 16 mm, 14,59 g Very Fine

**1**



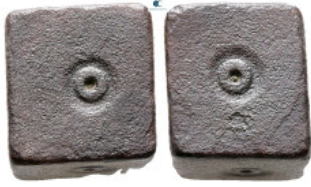
**982** Islamic. Weight Æ 15 mm, 13,86 g Good Fine

**1**



**983** Islamic. Weight Æ 19 mm, 28,90 g Nearly Very Fine

**1**



**984** Islamic. Weight  $\text{Æ}$  19 mm, 13,98 g Very Fine

**1**



**985** Islamic. Weight  $\text{Æ}$  18 mm, 20,64 g Nearly Very Fine

**1**



**986** Islamic. Weight  $\text{Æ}$  21 mm, 29,25 g Very Fine

**1**



**987** Islamic. Weight  $\text{Æ}$  20 mm, 20,83 g Very Fine

**1**



**988** Islamic. Weight  $\text{Æ}$  20 mm, 29,29 g Very Fine

**1**



**989** Islamic. Weight  $\text{Æ}$  24 mm, 58,58 g Very Fine

**1**



**990** Islamic. Weight  $\text{Æ}$  24 mm, 57,64 g Nearly Very Fine

**1**



**991** Islamic. Weight Æ 20 mm, 29,15 g Very Fine

**1**



**992** Islamic. Weight Æ 22 mm, 41,87 g Fine

**1**



**993** Islamic. Weight Æ 25 mm, 58,04 g Nearly Very Fine

**1**



**994** Islamic. Weight Æ 20 mm, 29,45 g Nearly Very Fine

**1**



**995** Islamic. Weight Æ 16 mm, 14,59 g Very Fine

**1**



**996** Islamic. Weight Æ 17 mm, 14,10 g Very Fine

**1**



**997** Islamic. Weight Æ 20 mm, 29,35 g Very Fine

**1**



**998** Islamic. Weight  $\text{Æ}$  20 mm, 26,80 g Very Fine

**1**



**999** Islamic. Weight  $\text{Æ}$  20 mm, 28,91 g Very Fine

**1**



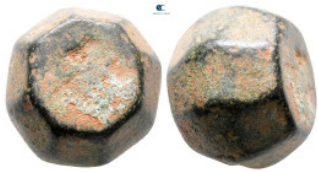
**1000** Islamic. Weight  $\text{Æ}$  20 mm, 28,93 g Nearly Very Fine

**1**



**1001** Islamic. Weight  $\text{Æ}$  20 mm, 28,76 g Very Fine

**1**



**1002** Islamic. Weight  $\text{Æ}$  20 mm, 29,07 g Nearly Very Fine

**1**



**1003** Islamic. Weight  $\text{Æ}$  16 mm, 14,26 g Very Fine

**1**



**1004** Islamic. Weight  $\text{Æ}$  16 mm, 8,24 g Fine

**1**





**1005** Islamic. Weight  $\text{Æ}$  16 mm, 13,69 g Nearly Very Fine

**1**



**1006** Islamic. Weight  $\text{Æ}$  16 mm, 14,46 g Very Fine

**1**



**1007** Islamic. Weight  $\text{Æ}$  17 mm, 14,52 g Very Fine

**1**



**1008** Islamic. Weight  $\text{Æ}$  16 mm, 14,29 g Very Fine

**1**



**1009** Islamic. Weight  $\text{Æ}$  24 mm, 57,13 g Good Fine

**1**



**1010** Islamic. Weight  $\text{Æ}$  19 mm, 29,09 g Very Fine

**1**



**1011** Islamic. Weight  $\text{Æ}$  17 mm, 13,80 g Very Fine

**1**



**1012** Islamic. Weight  $\text{Æ}$  17 mm, 14,74 g Fine

**1**



**1013** Islamic. Weight  $\text{Æ}$  28 mm, 17,42 g Fine

**1**



**1014** Islamic. Weight  $\text{Æ}$  19 mm, 29,95 g Very Fine

**1**



**1015** Islamic. Weight  $\text{Æ}$  20 mm, 28,87 g Very Fine

**1**



**1016** Islamic. Weight  $\text{Æ}$  16 mm, 14,49 g Very Fine

**1**



**1017** Islamic. Weight  $\text{Æ}$  17 mm, 15,84 g Fine

**1**



**1018** Islamic. Weight  $\text{Æ}$  22 mm, 30,11 g Very Fine

**1**



**1019** Islamic. Weight  $\text{Æ}$  19 mm, 29,04 g Fine

**1**



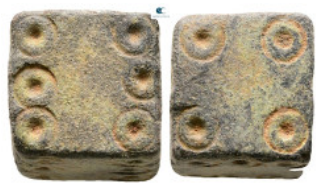
**1020** Islamic. Weight  $\text{Æ}$  15 mm, 14,63 g Good Fine

**1**



**1021** Islamic. Weight  $\text{Æ}$  20 mm, 14,90 g Fine

**1**



**1022** Islamic. Weight  $\text{Æ}$  19 mm, 13,78 g Very Fine

**1**



**1023** Islamic. Weight  $\text{Æ}$  21 mm, 29,91 g Good Fine

**1**



**1024** Islamic. Weight  $\text{Æ}$  15 mm, 14,52 g Fine

**1**



**1025** Islamic. Weight  $\text{Æ}$  19 mm, 29,02 g Fine

**1**



**1026** Islamic. Weight  $\text{AE}$  20 mm, 30,18 g Good Fine

**1**



**1027** . AD 1929-1937. AR Silver , 50 PIASTRES , ETAT DE SYRIE  
24 mm, 4,46 g Good Very Fine

**1**



**1028** Austria. Leopold I of Habsburg AD 1657-1705. 6 Kreuzer  
AR 26 mm, 2,48 g Fine, holed

**1**



**1029** Japan. AD 1867-1912. Year 15 2 Sen 32 mm, 13,87 g  
Nearly Extremely Fine

**1**



**1030** Japan. AD 1867-1912. Year 16 2 Sen 32 mm, 14,17 g  
Nearly Extremely Fine

**1**



**1031** Japan. AD 1867-1912. Year 10 2 Sen 32 mm, 14,40 g  
Extremely Fine

**1**



**1032** Japan. AD 1867-1912. Year 7 2 Sen 32 mm, 14,11 g Nearly  
Very Fine

**1**





**1033** Japan. AD 1867-1912. Year 14 2 Sen 32 mm, 13,99 g Good Very Fine

**1**



**1034** Japan. AD 1867-1912. Year 9 2 Sen 32 mm, 14,15 g Nearly Extremely Fine

**1**



**1035** Japan. AD 1867-1912. Year 13 2 Sen 32 mm, 13,69 g Nearly Extremely Fine

**1**



**1036** Japan. AD 1867-1912. Year 8 2 Sen 32 mm, 14,03 g Very Fine

**1**



**1037** Japan. AD 1867-1912. Year 17 2 Sen 32 mm, 14,41 g Nearly Extremely Fine

**1**



**1038** Japan. Mutsuhito (Meiji) AD 1867-1912. Year 42 50 Sen AR 27 mm, 10,06 g Nearly Mint state

**1**



**1039** USA. AD 1885. 1 Dollar 38 mm, 26,72 g Extremely Fine

**1**



**1040** Lot of ca. 23 greek bronze coins (collectors tickets included) / SOLD AS SEEN, NO RETURN! Nearly Very Fine

**1**



**1041** Lot of ca. 100 judaeen prutah / SOLD AS SEEN, NO RETURN! Very Fine

**1**



**1042** Lot of ca. 50 provincial tetradrachms / SOLD AS SEEN, NO RETURN! Nearly Very Fine

**1**



**1043** Lot of ca. 50 provincial tetradrachms / SOLD AS SEEN, NO RETURN! Nearly Very Fine

**1**



**1044** Lot of ca. 60 roman bronze coins / SOLD AS SEEN, NO RETURN! Good Fine

**1**



**1045** Lot of ca. 73 roman bronze coins / SOLD AS SEEN, NO RETURN! Fine

**1**



**1046** Lot of ca. 50 roman bronze coins / SOLD AS SEEN, NO RETURN! Fine

**1**



**1047** Lot of ca. 8 late roman bronze coins / SOLD AS SEEN, NO RETURN! Nearly Very Fine

**1**



**1048** Lot of ca. 50 byzantine bronze coins / SOLD AS SEEN, NO RETURN! Very Fine

**1**



**1049** Lot of ca. 50 medieval bronze coins / SOLD AS SEEN, NO RETURN! Nearly Very Fine

**1**



**1050** Lot of ca. 17 islamic weights / SOLD AS SEEN, NO RETURN! Fine

**1**



**1051** Lot of ca. 50 islamic bronze coins / SOLD AS SEEN, NO RETURN! Good Fine

**1**



**1052** Lot of ca. 50 islamic bronze coins / SOLD AS SEEN, NO RETURN! Very Fine

**1**



**1053** Lot of ca. 50 islamic bronze coins / SOLD AS SEEN, NO RETURN! Good Fine

**1**



**1054** Lot of ca. 50 islamic bronze coins / SOLD AS SEEN, NO RETURN! Very Fine

**1**





**1055** Germany, Brandenburg-Prussia, lot of 6 silver coins / SOLD AS SEEN, NO RETURN! Good Fine

**1**



**1056** Germany, Prussia, lot of 12 coins / SOLD AS SEEN, NO RETURN! Good Fine

**1**



**1057** Germany, Brandenburg-Prussia, lot of 6 silver coins / SOLD AS SEEN, NO RETURN! Good Fine

**1**



**1058** Germany, Brandenburg-Prussia, lot of 6 silver coins / SOLD AS SEEN, NO RETURN! Good Fine

**1**



**1059** Germany, Brandenburg-Prussia, lot of 6 coins / SOLD AS SEEN, NO RETURN! Good Fine

**1**



**1060** Germany, Brandenburg-Prussia, lot of 6 silver coins / SOLD AS SEEN, NO RETURN! Good Fine

**1**



**1061** Germany, Brandenburg-Prussia, lot of 10 coins (including one jeton)/ SOLD AS SEEN, NO RETURN! Very Fine

**1**



**1062** Germany, Brandenburg-Prussia, lot of 10 coins / SOLD AS SEEN, NO RETURN! Very Fine

**1**



**1063** Germany, Brandenburg-Prussia, lot of 10 coins / SOLD AS SEEN, NO RETURN! Good Very Fine

**1**



**1064** Germany, Bavaria, lot of 10 coins / SOLD AS SEEN, NO RETURN! Good Fine

**1**



**1065** Germany, Bavaria, lot of 10 coins / SOLD AS SEEN, NO RETURN! Nearly Very Fine

**1**



**1066** Germany, Bavaria, lot of 10 coins / SOLD AS SEEN, NO RETURN! Good Fine

**1**



**1067** Germany, Bavaria, lot of 10 coins / SOLD AS SEEN, NO RETURN! Nearly Very Fine

**1**



**1068** Germany, Bavaria, lot of 10 coins / SOLD AS SEEN, NO RETURN! Good Fine

**1**



**1069** Germany, Bavaria, lot of 10 coins / SOLD AS SEEN, NO RETURN! Nearly Very Fine

**1**



**1070** Germany, Bavaria, lot of 12 coins / SOLD AS SEEN, NO RETURN! Very Fine

**1**



**1071** Germany, Bavaria, lot of 10 coins / SOLD AS SEEN, NO RETURN! Very Fine

**1**



**1072** Germany, Bavaria, lot of 10 coins / SOLD AS SEEN, NO RETURN! Very Fine

**1**



**1073** Germany, Bavaria, lot of 10 coins / SOLD AS SEEN, NO RETURN! Very Fine

**1**



**1074** Germany, Saxony, lot of 15 coins / SOLD AS SEEN, NO RETURN! Nearly Very Fine

**1**



**1075** Germany, Saxony, lot of 20 coins / SOLD AS SEEN, NO RETURN! Very Fine

**1**



**1076** Germany, Braunschweig and Hannover, lot of 13 coins / SOLD AS SEEN, NO RETURN! Nearly Very Fine

**1**



**1077** Germany, Württemberg, lot of 10 coins / SOLD AS SEEN, NO RETURN! Very Fine

**1**



**1078** Germany, Frankfurt, lot of 10 coins / SOLD AS SEEN, NO RETURN! Very Fine

**1**



**1079** Germany, lot of 10 silver coins / SOLD AS SEEN, NO RETURN! Nearly Very Fine

**1**



**1080** Germany, lot of 30 silver coins / SOLD AS SEEN, NO RETURN! Good Fine

**1**



**1081** Germany, lot of 10 silver coins / SOLD AS SEEN, NO RETURN! Good Fine

**1**



**1082** Germany, lot of 10 silver coins / SOLD AS SEEN, NO RETURN! Good Fine

**1**



**1083** Germany, lot of 10 coins / SOLD AS SEEN, NO RETURN!  
Nearly Very Fine

**1**



**1084** Germany, lot of 10 coins / SOLD AS SEEN, NO RETURN!  
Good Fine

**1**



**1085** Germany, lot of 10 coins / SOLD AS SEEN, NO RETURN!  
Very Fine

**1**



**1086** Germany, lot of 10 silver coins / SOLD AS SEEN, NO  
RETURN! Nearly Very Fine

**1**



**1087** Germany, lot of 10 silver coins / SOLD AS SEEN, NO  
RETURN! Nearly Very Fine

**1**



**1088** Germany, lot of 10 coins / SOLD AS SEEN, NO RETURN!  
Nearly Very Fine

**1**



**1089** Germany, lot of 10 silver coins / SOLD AS SEEN, NO  
RETURN! Nearly Very Fine

**1**



**1090** Germany, lot of 30 coins / SOLD AS SEEN, NO RETURN!  
Good Fine

**1**



**1091** Germany, lot of 10 coins / SOLD AS SEEN, NO RETURN!  
Good Fine

**1**





**1092** Germany, lot of 10 coins / SOLD AS SEEN, NO RETURN!  
Good Fine

**1**



**1093** Germany, lot of 10 coins / SOLD AS SEEN, NO RETURN!  
Nearly Very Fine

**1**



**1094** Germany, lot of 10 coins / SOLD AS SEEN, NO RETURN!  
Nearly Very Fine

**1**



**1095** Germany, lot of 10 coins / SOLD AS SEEN, NO RETURN!  
Nearly Very Fine

**1**



**1096** Germany, lot of 15 coins / SOLD AS SEEN, NO RETURN!  
Nearly Very Fine

**1**



**1097** Germany, lot of 10 coins / SOLD AS SEEN, NO RETURN!  
Nearly Very Fine

**1**



**1098** Germany, lot of 10 coins / SOLD AS SEEN, NO RETURN!  
Very Fine

**1**



**1099** Germany, lot of 15 coins / SOLD AS SEEN, NO RETURN!  
Very Fine

**1**



**1100** Germany, lot of 10 coins / SOLD AS SEEN, NO RETURN!  
Very Fine

**1**



**1101** Germany, Kaiserreich, lot of 20 silver coins / SOLD AS SEEN, NO RETURN!  
Very Fine

**1**



**1102** Germany, Kaiserreich, lot of 10 silver coins / SOLD AS SEEN, NO RETURN! Good Very Fine

**1**



**1103** Germany, Kaiserreich, lot of 10 silver coins / SOLD AS SEEN, NO RETURN! Nearly Extremely Fine

**1**



**1104** Germany, Kaiserreich, lot of 12 silver coins / SOLD AS SEEN, NO RETURN! Very Fine

**1**



**1105** Germany, Kaiserreich, lot of 12 silver coins (some coins EF or better)/ SOLD AS SEEN, NO RETURN! Good Very Fine

**1**



**1106** Germany, Kaiserreich, lot of 12 silver coins / SOLD AS SEEN, NO RETURN! Very Fine

**1**



**1107** Germany, Weimar Republic, lot of 20 coins / SOLD AS SEEN, NO RETURN! Republic, lot of 20 coins / SOLD AS SEEN, NO RETURN! Nearly Extremely Fine

**1**



**1108** Germany, Third Reich, lot of 3 silver coins (41,66g) / SOLD AS SEEN, NO RETURN! Very Fine

**1**



**1109** Germany, Third Reich, lot of 5 silver coins (59,10g) / SOLD AS SEEN, NO RETURN! Very Fine

**1**



**1110** Germany, Third Reich, lot of 20 coins / SOLD AS SEEN, NO RETURN! Very Fine

**1**



**1111** Germany, Bank Deutscher Länder, lot of 20 coins of 50 pfennig / SOLD AS SEEN, NO RETURN! Good Very Fine

**1**



**1112** Germany, lot of 13 coins of years 1948-1950 / SOLD AS SEEN, NO RETURN! Good Very Fine

**1**



**1113** Germany, Bundesrepublik Deutschland, lot of 20 coins, all year 1950, 50 pfennig and 1 Mark / SOLD AS SEEN, NO RETURN! Good Very Fine

**1**



**1114** Germany, lot of 3 coins officially cancelled by the mint / SOLD AS SEEN, NO RETURN! Extremely Fine

**1**



**1115** Germany, lot of 3 silver coins, proof (46,6g)/ SOLD AS SEEN, NO RETURN! Good Extremely Fine

**1**



**1116** Germany, lot of 3 silver coins, proof (46,6g) / SOLD AS SEEN, NO RETURN! Good Extremely Fine

**1**



**1117** Germany, lot of 5 silver coins (55,8g) / SOLD AS SEEN, NO RETURN! Nearly Uncirculated

**1**



**1118** Germany, lot of 5 silver coins (55,8g) / SOLD AS SEEN, NO RETURN! Nearly Uncirculated

**1**



**1119** Germany, lot of 5 coins (nickel) / SOLD AS SEEN, NO RETURN! Nearly Uncirculated

**1**



**1120** Germany, lot of 5 coins (nickel) / SOLD AS SEEN, NO RETURN! Nearly Uncirculated

**1**



**1121** Germany, lot of 5 coins (nickel) / SOLD AS SEEN, NO RETURN! Nearly Uncirculated

**1**



**1122** Germany and Switzerland, lot of 4 coins (nickel) / SOLD AS SEEN, NO RETURN! Nearly Uncirculated

**1**



**1123** Germany, lot of 3 silver medals imitating coins (62,7g) / SOLD AS SEEN, NO RETURN! Extremely Fine

**1**



**1124** Germany, lot of 5 silver medals (75,01g) / SOLD AS SEEN, NO RETURN! Nearly Uncirculated

**1**



**1125** Germany, lot of 3 silver medals (48,20g) / SOLD AS SEEN, NO RETURN! Nearly Uncirculated

**1**





**1126** Germany, lot of 3 silver medals (59,43g) / SOLD AS SEEN, NO RETURN! Nearly Uncirculated

**1**



**1127** Germany, lot of 3 silver medals (29,65g) / SOLD AS SEEN, NO RETURN! Good Extremely Fine

**1**



**1128** Germany and Austria, lot of 3 medals / SOLD AS SEEN, NO RETURN! Very Fine

**1**



**1129** Russia, lot of 5 silver coins / SOLD AS SEEN, NO RETURN! Very Fine

**1**



**1130** Switzerland, lot of 5 coins / SOLD AS SEEN, NO RETURN! Nearly Very Fine

**1**



**1131** France, Nancy, lot of 10 silver coins / SOLD AS SEEN, NO RETURN! Very Fine

**1**



**1132** Great Britain, George V, lot of 15 coins of 1 penny / SOLD AS SEEN, NO RETURN! Very Fine

**1**



**1133** Belgium, lot of 10 coins / SOLD AS SEEN, NO RETURN! Good Very Fine

**1**



**1134** European states, lot of 20 coins / SOLD AS SEEN, NO RETURN! Very Fine

**1**



**1135** Lot of 15 lead postal seals of XIX-XX Century / SOLD AS SEEN, NO RETURN! Very Fine

**1**



**1136** Lot of 10 coins of the Indian Netherlands / SOLD AS SEEN, NO RETURN! Nearly Uncirculated

**1**



**1137** Czechoslovakia, lot of 11 coins / SOLD AS SEEN, NO RETURN! Good Extremely Fine

**1**



**1138** Lot of 3 silver coins (52,94g) / SOLD AS SEEN, NO RETURN! Nearly Very Fine

**1**



**1139** Usa, lot of 3 silver coins (35,74g)/ SOLD AS SEEN, NO RETURN! Extremely Fine

**1**



**1140** Canada, lot of 4 silver coins (44,51g) / SOLD AS SEEN, NO RETURN! Good Very Fine

**1**



**1141** Canada, lot of 8 silver coins (47,96g) / SOLD AS SEEN, NO RETURN! Good Extremely Fine

**1**



**1142** France, lot of 4 silver coins (48,16) / SOLD AS SEEN, NO RETURN! Nearly Uncirculated

**1**



**1143** Greece, Italy, Belgium etc, lot of 10 silver coins (35,03g)/ SOLD AS SEEN, NO RETURN! Very Fine

**1**



**1144** Usa, lot of 5 silver coins (48,05g)/ SOLD AS SEEN, NO RETURN! Good Very Fine

**1**



**1145** Lot of 10 silver coins (55,90g)/ SOLD AS SEEN, NO RETURN! Very Fine

**1**



**1146** Lot of 10 silver coins (35,49g)/ SOLD AS SEEN, NO RETURN! Very Fine

**1**



**1147** Lot of 10 silver coins (53,48g)/ SOLD AS SEEN, NO RETURN! Very Fine

**1**



**1148** Lot of 10 silver coins (50,62g)/ SOLD AS SEEN, NO RETURN! Very Fine

**1**



**1149** Lot of 10 silver coins (63,11g)/ SOLD AS SEEN, NO RETURN! Very Fine

**1**



**1150** Lot of 10 silver coins (56,95g)/ SOLD AS SEEN, NO RETURN! Very Fine

**1**



**1151** Lot of 10 silver coins (42,83g)/ SOLD AS SEEN, NO RETURN! Good Extremely Fine

**1**



**1152** Lot of 3 silver medals (57,73g)/ SOLD AS SEEN, NO RETURN! Nearly Uncirculated

**1**



**1153** Great Britain, lot of 2 silver fantasy medals (70,93g)/ SOLD AS SEEN, NO RETURN! Nearly Uncirculated

**1**