



# Rex Numismatics

## **Rex Budget 6**

1 March 2024

All prices are starting prices (EUR)  
PDF catalog created by [www.biddr.com](http://www.biddr.com)



**1** PONTOS. Amisos. Ae (Circa 85-65 BC). Time of Mithradates VI Eupator. Obv: Aegis facing. Rev: ΑΜΙΣΟΥ. Nike advancing right with shouldered palm branch; on each side, monogram. 8,72 g - 20,63 mm

**4**



**2** PONTOS. Amisos. Ae (Circa 85-65 BC). Time of Mithradates VI Eupator. Obv: Aegis facing. Rev: ΑΜΙΣΟΥ. Nike advancing right with shouldered palm branch; on each side, monogram. 6,96 g - 21,17 mm

**4**



**3** PONTOS. Amisos. Ae (Circa 85-65 BC). Time of Mithradates VI Eupator. Obv: Aegis facing. Rev: ΑΜΙΣΟΥ. Nike advancing right with shouldered palm branch; on each side, monogram. 6,68 g - 20,30 mm

**4**



**4** PONTOS. Amisos. Ae (Circa 85-65 BC). Time of Mithradates VI Eupator. Obv: Aegis facing. Rev: ΑΜΙΣΟΥ. Nike advancing right with shouldered palm branch; on each side, monogram. 6,96 g - 20,68 mm

**4**



**5** PONTOS. Amisos. Ae (Circa 85-65 BC). Time of Mithradates VI Eupator. Obv: Aegis facing. Rev: ΑΜΙΣΟΥ. Nike advancing right with shouldered palm branch; on each side, monogram. 7,13 g - 22,37 mm

**4**



**6** PONTOS. Amisos. Ae (Circa 85-65 BC). Time of Mithradates VI Eupator. Obv: Aegis facing. Rev: ΑΜΙΣΟΥ. Nike advancing right with shouldered palm branch; on each side, monogram. 7,67 g - 22,96 mm

**4**



**7** PONTOS. Amisos. Ae (Circa 85-65 BC). Time of Mithradates VI Eupator. Obv: Aegis facing. Rev: AMIZOY. Nike advancing right with shouldered palm branch; on each side, monogram. 6,70 g - 20,50 mm

**4**



**8** PONTOS. Amisos. Ae (Circa 85-65 BC). Time of Mithradates VI Eupator. Obv: Aegis facing. Rev: AMIZOY. Nike advancing right with shouldered palm branch; on each side, monogram. 7,44 g - 18,74 mm

**4**



**9** PONTOS. Amisos. Ae (Circa 85-65 BC). Time of Mithradates VI Eupator. Obv: Aegis facing. Rev: AMIZOY. Nike advancing right with shouldered palm branch; on each side, monogram. 6,87 g - 20,49 mm

**4**



**10** PONTOS. Amisos. Ae (Circa 85-65 BC). Time of Mithradates VI Eupator. Obv: Aegis facing. Rev: AMIZOY. Nike advancing right with shouldered palm branch; on each side, monogram. 6,69 g - 20,30 mm

**4**



**11** PONTOS. Amisos. Ae (Circa 85-65 BC). Time of Mithradates VI Eupator. Obv: Aegis facing. Rev: AMIZOY. Nike advancing right with shouldered palm branch; on each side, monogram. 6,69 g - 21,05 mm

**4**



**12** PONTOS. Amisos. Ae (Circa 85-65 BC). Time of Mithradates VI Eupator. Obv: Aegis facing. Rev: AMIZOY. Nike advancing right with shouldered palm branch; on each side, monogram. 7,38 g - 19,94 mm

**4**



**13** PONTOS. Amisos. Ae (Circa 85-65 BC). Time of Mithradates VI Eupator. Obv: Aegis facing. Rev: AMIΣOY. Nike advancing right with shouldered palm branch; on each side, monogram. 7,58 g - 19,95 mm

**4**



**14** PONTOS. Amisos. Ae (Circa 85-65 BC). Time of Mithradates VI Eupator. Obv: Aegis facing. Rev: AMIΣOY. Nike advancing right with shouldered palm branch; on each side, monogram. 7,58 g - 18,55 mm

**4**



**15** PONTOS. Amisos. Ae (Circa 85-65 BC). Time of Mithradates VI Eupator. Obv: Aegis facing. Rev: AMIΣOY. Nike advancing right with shouldered palm branch; on each side, monogram. 7,23 g - 18,02 mm

**4**



**16** PONTOS. Amisos. Time of Mithradates VI Eupator (Circa 105-90 or 90-85 BC). Ae. Obv: Helmeted head of Athena right. Rev: AMI - ΣOY. Sword in sheath; star and crescent to upper left, 7,98 g - 21,25 mm

**4**



**17** PONTOS. Amisos. Time of Mithradates VI Eupator (Circa 105-90 or 90-85 BC). Ae. Obv: Helmeted head of Athena right. Rev: AMI - ΣOY. Sword in sheath; star and crescent to upper left, 8,24 g - 18,65 mm

**4**



**18** PONTOS. Amisos. Time of Mithradates VI Eupator (Circa 105-90 or 90-85 BC). Ae. Obv: Helmeted head of Athena right. Rev: AMI - ΣOY. Sword in sheath; star and crescent to upper left, 7,81 g - 19,91 mm

**4**



**19** PONTOS. Amisos. Time of Mithradates VI Eupator (Circa 105-90 or 90-85 BC). Ae. Obv: Helmeted head of Athena right. Rev: AMI - ΣΟΥ. Sword in sheath; star and crescent to upper left, 8,24 g - 21,10 mm

**4**



**20** PONTOS. Amisos. Time of Mithradates VI Eupator (Circa 105-90 or 90-85 BC). Ae. Obv: Helmeted head of Athena right. Rev: AMI - ΣΟΥ. Sword in sheath; star and crescent to upper left, 8,04 g - 20,20 mm

**4**



**21** PAPHLAGONIA. Amastris. Ae (Circa 105-90 or 95-90 BC). Struck under Mithradates VI Eupator. Obv: Helmeted head of Ares right. Rev: ΑΜΑΣ - ΤΡΕΩΣ. Sword in sheath; in field to left crescent and star to left. 7,42 g - 19,98 mm

**4**



**22** PAPHLAGONIA. Amastris. Ae (Circa 105-90 or 95-90 BC). Struck under Mithradates VI Eupator. Obv: Helmeted head of Ares right. Rev: ΑΜΑΣ - ΤΡΕΩΣ. Sword in sheath; in field to left crescent and star to left. 7,54 g - 20,55 mm

**4**



**23** PONTOS. Amisos. Time of Mithradates VI Eupator (Circa 105-90 or 90-85 BC). Ae. Obv: Helmeted head of Athena right. Rev: AMI - ΣΟΥ. Sword in sheath; star and crescent to upper left, 8,62 g - 21,54 mm

**4**



**24** BITHYNIA. Dia. Ae (Circa 95-90 or 80-70 BC). Struck under Mithradates VI Eupator. Obv: Laureate head of Zeus right. Rev: ΔΙΑΣ. Eagle, with head right and wings spread, standing left on thunderbolt; monogram to left and right. 7,08 g - 20,07 mm

**4**



**25** PONTOS. Amisos. Ae (Circa 100-85 BC). Obv: Laureate head of Zeus right. Rev: ΑΜΙΣΟΥ. Eagle, with head right, standing left on thunderbolt; monogram to left. 8,14 g - 20,70 mm

**4**



**26** PONTOS. Amisos. Ae (Circa 100-85 BC). Obv: Laureate head of Zeus right. Rev: AMIΣOV. Eagle, with head right, standing left on thunderbolt; monogram to left. 8,59 g - 19,06 mm

**4**



**27** PONTOS. Amisos. Ae (Circa 100-85 BC). Obv: Laureate head of Zeus right. Rev: AMIΣOV. Eagle, with head right, standing left on thunderbolt; monogram to left. 8,30 g - 19,37 mm

**4**



**28** PONTOS. Amisos. Ae (Circa 100-85 BC). Obv: Laureate head of Zeus right. Rev: AMIΣOV. Eagle, with head right, standing left on thunderbolt; monogram to left. 7,03 g - 21,77 mm

**4**



**29** PONTOS. Amisos. Time of Mithradates VI Eupator (Circa 100-95 or 80-70 BC). Ae. Obv: Head of Perseus right, wearing Phrygian cap. Rev: AMIΣOY. Pegasos grazing left; monogram to left, two monograms below 11,51 g - 23,60 mm

**4**



**30** PONTOS. Amisos. Time of Mithradates VI Eupator (Circa 100-95 or 80-70 BC). Ae. Obv: Head of Perseus right, wearing Phrygian cap. Rev: AMIΣOY. Pegasos grazing left; monogram to left, two monograms below 12,73 g - 23,50 mm

**4**



**31** PONTOS. Amisos. Time of Mithradates VI Eupator (Circa 100-95 or 80-70 BC). Ae. Obv: Head of Perseus right, wearing Phrygian cap. Rev: AMIΣOY. Pegasos grazing left; monogram to left, two monograms below 12,90 g - 22,30 mm

**4**



**32** PONTOS. Amisos. Time of Mithradates VI Eupator (Circa 105-90 or 90-85 BC). Ae. Obv: Head of Dionysos right, wearing ivy wreath. Rev: AMIΣOY. Thyrsos leaning against cista mystica and draped with panther skin; monogram to left. 7,17 g - 19,80 mm

**4**



**33** PONTOS. Amisos. Time of Mithradates VI Eupator (Circa 105-90 or 90-85 BC). Ae. Obv: Head of Dionysos right, wearing ivy wreath. Rev: AMI - ΣΟΥ. Thyrus. 4,42 g - 17,40 mm

**4**



**34** PONTOS. Amisos. Time of Mithradates VI Eupator (Circa 105-90 or 90-85 BC). Ae. Obv: Helmeted head of Athena right. Rev: AMI - ΣΟΥ. Perseus standing left, holding harpa and head of Medusa, whose decapitated body lies at his feet; monogram to left. 19,25 g - 28,30 mm artificially patinated

**4**



**35** PONTOS. Uncertain, possibly Amisos. Ae (Circa 130-100 BC). Obv: Male head left, wearing bashlyk; two c/m's: gorgoneion and helmet(?) within incuse circles. Rev: Eight-pointed star. 19,25 g - 27,06 mm

**4**



**36** KINGS OF CAPPADOCIA. Ariarathes VI Epiphanes (Circa 130-116 BC). Ae. Eusebeia under Mt. Argaios. Obv: Diademed and draped bust right, wearing tiara; monogram to left. Rev: ΒΑΣΙΛΕΩΣ / ΑΡΙΑΡΑΘΟΥ. Athena seated left on throne, holding wreath and spear, and resting elbow upon shield. . 5,19 g - 18,46 mm

**4**



**37** PONTOS. Uncertain (Amisos?). Time of Mithradates VI (Circa 130-100 BC). Ae. Obv: Bashlyk left, facing Pan bust below; bow to right; monogram to right. Rev: Eight-rayed star; bow to right. 4,81 g - 17,36 mm

**4**



**38** PONTOS. Uncertain, possibly Amisos. Ae. Struck under Mithradates VI (Circa 119-100 BC). Obv: Eight-pointed star on head of horse right. Rev: Eight-rayed comet star. 1,31 g - 10,10 mm

**4**



**39** COLCHIS. Dioscurias. Time of Mithradates VI Eupator (Circa 105-90 BC). Ae. Obv: Piloι of the dioskouroi surmounted by stars. Rev: ΔΙ - ΟΣ / ΚΟΥ - ΠΙΑ / Δ - ΟΣ. Legend in three lines around thyrsos. 3,74 g - 15,93 mm

**4**



**40** PONTOS. Amisos. Ae (Circa 120-111 or 110-100 BC). Struck under Mithradates VI Eupator. Obv: Bareheaded, draped and winged bust right. Rev: ΑΜΙ - ΣΟΥ. Cornucopia; star and pilos to left and right. 3,75 g - 17,88 mm

**4**



**41** KINGS OF GALATIA. Amyntas (39-25 BC). Ae. Obv: Draped bust of Artemis right, with bow and quiver over shoulder, Ε to left, ς to right. Rev: Stag standing right; Β above; monogram in exergue. 8,33 g - 19,56 mm

**4**



**42** KINGS OF GALATIA. Amyntas (39-25 BC). Ae. Obv: Draped bust of Artemis right, with bow and quiver over shoulder, Ε to left, ς to right. Rev: Stag standing right; Β above; monogram in exergue. 7,91 g - 20,25 mm

**4**



**43** LYDIA. Sardes. Ae (Circa 133-14 AD). Polemaios Keraseis, magistrate. Obv: Draped bust of Artemis right, with bow and quiver over shoulder. Rev: ΣΑΡΔΙΑΝΩΝ. 7,38 g - 23,70 mm

**4**



**44** SELEUKID KINGDOM. Demetrius I Soter (162-150 BC). Serrate Ae. Antioch on the Orontes. Obv: Laureate head of Apollo right, with bow and quiver over shoulder. Rev: ΒΑΣΙΛΕΩΣ ΔΗΜΗΤΡΙΟΥ. Tripod. 14,44 g - 24,62 mm

**4**



**45** SELEUKID KINGDOM. Seleukos II Kallinikos (246-225 BC). Ae. Antioch on the Orontes. Obv: Laureate head of Apollo right. Rev: ΒΑΣΙΛΕΩΣ / ΣΕΛΕΥΚΟΥ. Tripod; monogram to outer left. 7,91 g - 19,57 mm

**4**





**46** KINGS OF BITHYNIA. Prusias II Kynegos (182-149 BC). Ae. Nikomedeia. Obv: Draped bust of Dionysos right, wearing ivy wreath. Rev: ΒΑΣΙΛΕΩΣ / ΠΡΟΥΣΙΟΥ. The centaur Chiron standing right, playing lyre. 4,12 g - 19,36 mm

**4**



**47** DYNASTS OF LYCIA. Perikles (Circa 380-360 BC). Tetrobol. Uncertain mint, possibly Limyra. Obv: Facing scalp of lion. Rev: Triskeles within incuse circle. Condition :Very Fine 2,69 g - 16,25 mm

**4**



**48** DYNASTS OF LYCIA. Perikles (Circa 380-360 BC). Tetrobol. Uncertain mint, possibly Limyra. Obv: Facing scalp of lion. Rev: Triskeles within incuse circle. Condition :Very Fine 2,83 g - 15,53 mm

**4**



**49** SATRAPS OF CARIA. Hidrieus (Circa 351/0-344/3 BC). Trihemiobol. Halikarnassos. Obv: Laureate head of Apollo facing slightly right, with drapery at neck. Rev: Ι - Δ - Ρ - Ι. Stellate pattern. 0,73 g

**4**



**50** IONIA. Miletos. Obol or Hemihekte (Late 6th-early 5th centuries BC). Obv: Head of lion left. Rev: Stellate pattern within incuse square. 1,13 g

**4**



**51** IONIA. Phokaia. Diobol (Circa 521-478 BC). Obv: Archaic female head left, wearing earring and helmet or close fitting cap. Rev: Quadripartite incuse square. 1,05 g

**4**



**52** IONIA. Miletos. Obol or Hemihekte (Late 6th-early 5th centuries BC). Obv: Head of lion left. Rev: Stellate pattern within incuse square 0,93 g

**4**



**53** IONIA. Miletos. Obol or Hemihekte (6th-5th centuries BC). Obv: Forepart of lion left, head right. Rev: Stellate floral design within incuse square 1,15 g

**4**



**54** MYSIA. Kyzikos. Hemiobol (Circa 450-400 BC). Obv: Forepart of boar left; to right, tunny upward. Rev: Head of roaring lion left; star to upper left; all within incuse square. 0,37 g

**4**



**55** MYSIA. Kyzikos. Hemiobol (Circa 450-400 BC). Obv: Forepart of boar left; to right, tunny upward. Rev: Head of roaring lion left; star to upper left; all within incuse square. 0,42 g

**4**



**56** PAMPHYLIA. Side. AR Drachm (Circa 205-190 BC). Obv: Helmeted head of Athena right. Rev: Nike advancing left, holdnig wreath; pomegranate. 3,71 g - 16,91 mm

**4**



**57** PISIDIA. Selge. Obol (Circa 350-300 BC). Obv: Helmeted head of Athena right; behind, astragalos Rev: Facing gorgoneion. 0,97 g

**4**



**58** PISIDIA. Selge. Obol (Circa 350-300 BC). Obv: Helmeted head of Athena right; behind, astragalos Rev: Facing gorgoneion. 0,82 g

**4**



**59** PISIDIA. Selge. Obol (Circa 350-300 BC). Obv: Helmeted head of Athena right; behind, astragalos Rev: Facing gorgoneion. 0,87 g

**4**



**60** PISIDIA. Selge. Obol (Circa 350-300 BC). Obv: Helmeted head of Athena right; behind, astragalos Rev: Facing gorgoneion. 0,97 g

**4**



**61** PISIDIA. Selge. Obol (Circa 350-300 BC). Obv: Helmeted head of Athena right; behind, astragalos Rev: Facing gorgoneion. 0,62 g

**4**



**62** PISIDIA. Selge. Obol (Circa 350-300 BC). Obv: Helmeted head of Athena right; behind, astragalos Rev: Facing gorgoneion. 0,78 g

**4**



**63** PISIDIA. Selge. Obol (Circa 350-300 BC). Obv: Helmeted head of Athena right; behind, astragalos Rev: Facing gorgoneion. 0,93 g

**4**



**64** PISIDIA. Selge. Obol (Circa 350-300 BC). Obv: Helmeted head of Athena right; behind, astragalos Rev: Facing gorgoneion. 0,86 g

**4**



**65** PISIDIA. Selge. Obol (Circa 350-300 BC). Obv: Helmeted head of Athena right; behind, astragalos Rev: Facing gorgoneion. 0,89 g

**4**



**66** PISIDIA. Selge. Obol (Circa 350-300 BC). Obv: Helmeted head of Athena right; behind, astragalos Rev: Facing gorgoneion. 0,94 g

**4**



**67** PISIDIA. Selge. Obol (Circa 350-300 BC). Obv: Helmeted head of Athena right; behind, astragalos Rev: Facing gorgoneion. 0,87 g

**4**



**68** PISIDIA. Selge. Obol (Circa 350-300 BC). Obv: Helmeted head of Athena right; behind, astragalos Rev: Facing gorgoneion. 0,87 g

**4**



**69** PISIDIA. Selge. Obol (Circa 350-300 BC). Obv: Helmeted head of Athena right; behind, astragalos Rev: Facing gorgoneion. 0,78 g

**4**



**70** PISIDIA. Selge. Obol (Circa 350-300 BC). Obv: Helmeted head of Athena right; behind, astragalos Rev: Facing gorgoneion. 0,83 g

**4**



**71** PISIDIA. Selge. Obol (Circa 350-300 BC). Obv: Helmeted head of Athena right; behind, astragalos Rev: Facing gorgoneion. 0,82 g

**4**



**72** PISIDIA. Selge. Obol (Circa 350-300 BC). Obv: Helmeted head of Athena right; behind, astragalos Rev: Facing gorgoneion. 0,83 g

**4**



**73** PISIDIA. Selge. Obol (Circa 350-300 BC). Obv: Helmeted head of Athena right; behind, astragalos Rev: Facing gorgoneion. 0,88 g

**4**



**74** PISIDIA. Selge. Obol (Circa 350-300 BC). Obv: Helmeted head of Athena right; behind, astragalos Rev: Facing gorgoneion. 0,68 g

**4**



**75** PISIDIA. Selge. Obol (Circa 350-300 BC). Obv: Helmeted head of Athena right; behind, astragalos Rev: Facing gorgoneion. 0,72 g

**4**



**76** PISIDIA. Selge. Obol (Circa 350-300 BC). Obv: Helmeted head of Athena right; behind, astragalos Rev: Facing gorgoneion. 0,88 g

**4**



**77** PISIDIA. Selge. Obol (Circa 350-300 BC). Obv: Helmeted head of Athena right; behind, astragalos Rev: Facing gorgoneion. 0,80 g

**4**



**78** PISIDIA. Selge. Obol (Circa 350-300 BC). Obv: Helmeted head of Athena right; behind, astragalos Rev: Facing gorgoneion. 0,70 g

**4**



**79** PISIDIA. Selge. Obol (Circa 350-300 BC). Obv: Helmeted head of Athena right; behind, astragalos Rev: Facing gorgoneion. 0,87 g

**4**



**80** PISIDIA. Selge. Obol (Circa 350-300 BC). Obv: Helmeted head of Athena right; behind, astragalos Rev: Facing gorgoneion. 0,87 g

**4**



**81** PISIDIA. Selge. Obol (Circa 350-300 BC). Obv: Helmeted head of Athena right; behind, astragalos Rev: Facing gorgoneion. 0,92 g

**4**



**82** PISIDIA. Selge. Obol (Circa 350-300 BC). Obv: Helmeted head of Athena right; behind, astragalos Rev: Facing gorgoneion. 0,87 g

**4**



**83** PISIDIA. Selge. Obol (Circa 350-300 BC). Obv: Helmeted head of Athena right; behind, astragalos Rev: Facing gorgoneion. 0,93 g

**4**



**84** PISIDIA. Selge. Obol (Circa 350-300 BC). Obv: Helmeted head of Athena right; behind, astragalos Rev: Facing gorgoneion. 0,59 g

**4**



**85** PAMPHYLIA. Aspendos. Obol (Circa 460-360 BC). Rev: Facing gorgoneion, tongue protruding. Obv: Head of lion right; all within pelleted linear border. SNG France 42. 0,39 g

**4**



**86** MYSIA. Pergamon. Cistophor (Circa 166-67 BC). Obv: Cista mystica with serpent; all within ivy wreath. Rev: Bowcase between two serpents. Condition :Very Fine 12,23 g 28,66 mm

**4**



**87** CARIA. Rhodes. Drachm (Circa 88-84 BC). Menodoros, magistrate. Obv: Radiate head of Helios right. Rev:Rose within incuse square. 2,75 g - 15,04 mm

**4**



**88** CARIA. Rhodes. Drachm (Circa 88-84 BC). Menodoros, magistrate. Obv: Radiate head of Helios right. Rev: Rose within incuse square 2,14 g - 14,85 mm

**4**



**89** SATRAPS OF CARIA. Pixodaros (Circa 341/0-336/5 BC). Drachm. Obv: Head of Apollo facing slightly right, wearing laurel wreath, drapery at neck. Rev: Zeus standing right, holding spear and labrys. 3,14 g - 14,21 mm

**4**



**90** LYCIAN LEAGUE. Masicytes. Hemidrachm (48-42 BC). Obv: Laureate head of Apollo right. Rev: M - A. Lyre; star above; all within incuse square. 1,50 g - 13,00 mm

**4**



**91** CARIA. Uncertain. Hemiobol (Circa 4th century BC). Obv: Confronted foreparts of two bulls. Rev: Forepart of bull left; star below. 0,38 g

**4**



**92** TROAS. Kebren. Hemiobol (4th century BC). Obv: Head of Apollo right. Rev: Head of ram right. BMC 14 var. (Hemiobol). 0,54 g

**4**



**93** ATTICA. Athens. Tetradrachm (Circa 454-404 BC). Obv: Helmeted head of Athena right, with frontal eye. Rev: AΘE. Owl standing right, head facing; olive sprig and crescent to left; all within incuse square. Kroll 8; HGC 4, 1597. Condition: Very fine, test cut. 16,87 g - 25,80 mm

**4**



**94** Asiamenor Uncertain. Drachm Obv :Shield. Rev : Owl. 3,02 g - 12,28 mm

**4**



**95** Uncertain. 2,64 g - 10,22 mm

**4**



**96** KINGS OF MACEDON. Alexander III 'the Great' (336-323 BC). Ae 1/4 Unit. Uncertain Macedonian mint. Obv: Head of Herakles right, wearing lion skin. Rev: ΑΛΕΞΑΝΔΡΟΥ. Bow in quiver left; below, club right 5,52 g - 17,00 mm

**4**



**97** KINGS OF MACEDON. Alexander III 'the Great' (336-323 BC). Tetradrachm. Obv: Head of Herakles right, wearing lion skin. Rev: ΑΛΕΞΑΝΔΡΟΥ ΒΑΣΙΛΕΩΣ. Zeus seated left, holding sceptre and eagle Condition : Extremely Fine...17,07 g - 26,08 mm

**4**



**98** KINGS OF MACEDON. Alexander III 'the Great' (336-323 BC). Tetradrachm. Obv: Head of Herakles right, wearing lion skin. Rev: ΑΛΕΞΑΝΔΡΟΥ ΒΑΣΙΛΕΩΣ. Zeus seated left, holding sceptre and eagle Condition : Extremely Fine... 16,95 g - 28,28 mm

**4**



**99** KINGS OF MACEDON. Alexander III 'the Great' (336-323 BC). Tetradrachm. Kition. Obv: Head of Herakles right, wearing lion skin. Rev: ΑΛΕΞΑΝΔΡΟΥ ΒΑΣΙΛΕΩΣ. Zeus seated left, holding sceptre and eagle Condition : Extremely Fine... 17,07 g - 24,53 mm

**4**



**100** KINGS OF MACEDON. Alexander III 'the Great' (336-323 BC). Tetradrachm. Kition. Obv: Head of Herakles right, wearing lion skin. Rev: ΑΛΕΞΑΝΔΡΟΥ ΒΑΣΙΛΕΩΣ. Zeus seated left, holding sceptre and eagle 16,41 g - 25,43 mm

**4**





**101** KINGS OF MACEDON. Alexander III 'the Great' (336-323 BC). Drachm. Obv: Head of Herakles right, wearing lion skin. Rev: ΑΛΕΞΑΝΔΡΟΥ. Zeus seated left on throne, holding eagle and sceptre. 4,18 g

**4**



**102** KINGS OF MACEDON. Alexander III 'the Great' (336-323 BC). Drachm. Obv: Head of Herakles right, wearing lion skin. Rev: ΑΛΕΞΑΝΔΡΟΥ. Zeus seated left on throne, holding eagle and sceptre. 4,07 g

**4**



**103** KINGS OF MACEDON. Alexander III 'the Great' (336-323 BC). Drachm. Obv: Head of Herakles right, wearing lion skin. Rev: ΑΛΕΞΑΝΔΡΟΥ. Zeus seated left on throne, holding eagle and sceptre. 4,24 g

**4**



**104** KINGS OF MACEDON. Alexander III 'the Great' (336-323 BC). Drachm. Obv: Head of Herakles right, wearing lion skin. Rev: ΑΛΕΞΑΝΔΡΟΥ. Zeus seated left on throne, holding eagle and sceptre. 4,02 g

**4**



**105** KINGS OF MACEDON. Alexander III 'the Great' (336-323 BC). Drachm. Obv: Head of Herakles right, wearing lion skin. Rev: ΑΛΕΞΑΝΔΡΟΥ. Zeus seated left on throne, holding eagle and sceptre. 4,07 g

**4**



**106** KINGS OF MACEDON. Alexander III 'the Great' (336-323 BC). Drachm. Obv: Head of Herakles right, wearing lion skin. Rev: ΑΛΕΞΑΝΔΡΟΥ. Zeus seated left on throne, holding eagle and sceptre. 4,22 g

**4**



**107** KINGS OF MACEDON. Alexander III 'the Great' (336-323 BC). Drachm. Obv: Head of Herakles right, wearing lion skin. Rev: ΑΛΕΞΑΝΔΡΟΥ. Zeus seated left on throne, holding eagle and sceptre. 4,27 g

**4**



**108** KINGS OF MACEDON. Philip III Arrhidaios (323-317 BC). Drachm. Lampsakos. Obv: Head of Herakles right, wearing lion skin. Rev: ΦΙΛΙΠΠΟΥ. Zeus seated left, holding eagle and sceptre 4,27 g

**4**



**109** KINGS OF MACEDON. Alexander III 'the Great' (336-323 BC). Drachm. Obv: Head of Herakles right, wearing lion skin. Rev: ΑΛΕΞΑΝΔΡΟΥ. Zeus seated left on throne, holding eagle and sceptre. 3,97 g

**4**



**110** KINGS OF MACEDON. Alexander III 'the Great' (336-323 BC). Drachm. Obv: Head of Herakles right, wearing lion skin. Rev: ΑΛΕΞΑΝΔΡΟΥ. Zeus seated left on throne, holding eagle and sceptre. 4,26 g

**4**



**111** KINGS OF MACEDON. Alexander III 'the Great' (336-323 BC). Drachm. Obv: Head of Herakles right, wearing lion skin. Rev: ΑΛΕΞΑΝΔΡΟΥ. Zeus seated left on throne, holding eagle and sceptre. 4,13 g

**4**



**112** KINGS OF MACEDON. Alexander III 'the Great' (336-323 BC). Drachm. Obv: Head of Herakles right, wearing lion skin. Rev: ΑΛΕΞΑΝΔΡΟΥ. Zeus seated left on throne, holding eagle and sceptre. 4,17 g

**4**



**113** KINGS OF MACEDON. Alexander III 'the Great' (336-323 BC). Drachm. Obv: Head of Herakles right, wearing lion skin. Rev: ΑΛΕΞΑΝΔΡΟΥ. Zeus seated left on throne, holding eagle and sceptre. 3,33 g

**4**



**114** KINGS OF MACEDON. Alexander III 'the Great' (336-323 BC). Drachm. Obv: Head of Herakles right, wearing lion skin. Rev: ΑΛΕΞΑΝΔΡΟΥ. Zeus seated left on throne, holding eagle and sceptre. 3,91 g

**4**



**115** KINGS OF MACEDON. Alexander III 'the Great' (336-323 BC). Drachm. Obv: Head of Herakles right, wearing lion skin. Rev: ΑΛΕΞΑΝΔΡΟΥ. Zeus seated left on throne, holding eagle and sceptre. 4,04 g

**4**



**116** KINGS OF MACEDON. Alexander III 'the Great' (336-323 BC). Drachm. Obv: Head of Herakles right, wearing lion skin. Rev: ΑΛΕΞΑΝΔΡΟΥ. Zeus seated left on throne, holding eagle and sceptre. 4,00 g

**4**



**117** KINGS OF MACEDON. Alexander III 'the Great' (336-323 BC). Drachm. Obv: Head of Herakles right, wearing lion skin. Rev: ΑΛΕΞΑΝΔΡΟΥ. Zeus seated left on throne, holding eagle and sceptre. 3,94 g

**4**



**118** KINGS OF MACEDON. Alexander III 'the Great' (336-323 BC). Drachm. Obv: Head of Herakles right, wearing lion skin. Rev: ΑΛΕΞΑΝΔΡΟΥ. Zeus seated left on throne, holding eagle and sceptre. 3,36 g

**4**



**119** KINGS OF MACEDON. Alexander III 'the Great' (336-323 BC). Drachm. Obv: Head of Herakles right, wearing lion skin. Rev: ΑΛΕΞΑΝΔΡΟΥ. Zeus seated left on throne, holding eagle and sceptre. 3,94 g

**4**



**120** KINGS OF MACEDON. Alexander III 'the Great' (336-323 BC). Drachm. Obv: Head of Herakles right, wearing lion skin. Rev: ΑΛΕΞΑΝΔΡΟΥ. Zeus seated left on throne, holding eagle and sceptre. 3,95 g

**4**



**121** KINGS OF MACEDON. Alexander III 'the Great' (336-323 BC). Drachm. Obv: Head of Herakles right, wearing lion skin. Rev: ΑΛΕΞΑΝΔΡΟΥ. Zeus seated left on throne, holding eagle and sceptre. 4,06 g

**4**



**122** KINGS OF MACEDON. Alexander III 'the Great' (336-323 BC). Drachm. Obv: Head of Herakles right, wearing lion skin. Rev: ΑΛΕΞΑΝΔΡΟΥ. Zeus seated left on throne, holding eagle and sceptre. 3,97 g

**4**



**123** KINGS OF MACEDON. Alexander III 'the Great' (336-323 BC). Drachm. Obv: Head of Herakles right, wearing lion skin. Rev: ΑΛΕΞΑΝΔΡΟΥ. Zeus seated left on throne, holding eagle and sceptre. 3,65 g

**4**



**124** KINGS OF MACEDON. Alexander III 'the Great' (336-323 BC). Drachm. Obv: Head of Herakles right, wearing lion skin. Rev: ΑΛΕΞΑΝΔΡΟΥ. Zeus seated left on throne, holding eagle and sceptre. 4,21 g

**4**



**125** KINGS OF MACEDON. Alexander III 'the Great' (336-323 BC). Drachm. Obv: Head of Herakles right, wearing lion skin. Rev: ΑΛΕΞΑΝΔΡΟΥ. Zeus seated left on throne, holding eagle and sceptre. 3,48 g

**4**



**126** KINGS OF MACEDON. Alexander III 'the Great' (336-323 BC). Drachm. Obv: Head of Herakles right, wearing lion skin. Rev: ΑΛΕΞΑΝΔΡΟΥ. Zeus seated left on throne, holding eagle and sceptre. 4,26 g

**4**



**127** KINGS OF MACEDON. Alexander III 'the Great' (336-323 BC). Drachm. Obv: Head of Herakles right, wearing lion skin. Rev: ΑΛΕΞΑΝΔΡΟΥ. Zeus seated left on throne, holding eagle and sceptre. 4,18 g

**4**



**128** KINGS OF MACEDON. Alexander III 'the Great' (336-323 BC). Drachm. Obv: Head of Herakles right, wearing lion skin. Rev: ΑΛΕΞΑΝΔΡΟΥ. Zeus seated left on throne, holding eagle and sceptre. 3,97 g

**4**



**129** KINGS OF MACEDON. Alexander III 'the Great' (336-323 BC). Drachm. Obv: Head of Herakles right, wearing lion skin. Rev: ΑΛΕΞΑΝΔΡΟΥ. Zeus seated left on throne, holding eagle and sceptre. 3,79 g

**4**



**130** KINGS OF THRACE (Macedonian). Lysimachos (305-281 BC). Drachm. Kolophon. Obv: Head of Herakles right, wearing lion skin. Rev: ΛΥΣΙΜΑΧΟΥ / ΒΑΣΙΛΕΩΣ. Zeus seated left on throne, holding eagle and sceptre 4,04 g

**4**



**131** KINGS OF MACEDON. Alexander III 'the Great' (336-323 BC). Drachm. Obv: Head of Herakles right, wearing lion skin. Rev: ΑΛΕΞΑΝΔΡΟΥ. Zeus seated left on throne, holding eagle and sceptre. 3,75 g

**4**



**132** KINGS OF MACEDON. Alexander III 'the Great' (336-323 BC). Drachm. Obv: Head of Herakles right, wearing lion skin. Rev: ΑΛΕΞΑΝΔΡΟΥ. Zeus seated left on throne, holding eagle and sceptre. 4,05 g

**4**



**133** KINGS OF MACEDON. Alexander III 'the Great' (336-323 BC). Drachm. Obv: Head of Herakles right, wearing lion skin. Rev: ΑΛΕΞΑΝΔΡΟΥ. Zeus seated left on throne, holding eagle and sceptre. 4,06 g

**4**



**134** KINGS OF MACEDON. Alexander III 'the Great' (336-323 BC). Drachm. Obv: Head of Herakles right, wearing lion skin. Rev: ΑΛΕΞΑΝΔΡΟΥ. Zeus seated left on throne, holding eagle and sceptre. 4,06 g

**4**



**135** KINGS OF MACEDON. Alexander III 'the Great' (336-323 BC). Drachm. Obv: Head of Herakles right, wearing lion skin. Rev: ΑΛΕΞΑΝΔΡΟΥ. Zeus seated left on throne, holding eagle and sceptre. 3,78 g

**4**



**136** KINGS OF MACEDON. Alexander III 'the Great' (336-323 BC). Drachm. Obv: Head of Herakles right, wearing lion skin. Rev: ΑΛΕΞΑΝΔΡΟΥ. Zeus seated left on throne, holding eagle and sceptre. 3,96 g

**4**



**137** ACHAEMENID EMPIRE. Time of Darios II (424-405 BC). Siglos. Sardes. Obv: Persian king in kneeling-running stance right, holding spear and bow, and with quiver over shoulder. Rev: Incuse rectangular punch 5,35 g

**4**



**138** ACHAEMENID EMPIRE. Time of Darios II (424-405 BC). Siglos. Sardes. Obv: Persian king in kneeling-running stance right, holding spear and bow, and with quiver over shoulder. Rev: Incuse rectangular punch 5,35 g

**4**



**139** ACHAEMENID EMPIRE. Time of Darios II (424-405 BC). Siglos. Sardes. Obv: Persian king in kneeling-running stance right, holding spear and bow, and with quiver over shoulder. Rev: Incuse rectangular punch 4,91 g

**4**



**140** ACHAEMENID EMPIRE. Time of Darios II (424-405 BC). Siglos. Sardes. Obv: Persian king in kneeling-running stance right, holding spear and bow, and with quiver over shoulder. Rev: Incuse rectangular punch 5,35 g

**4**



**141** ACHAEMENID EMPIRE. Time of Darios II (424-405 BC). Siglos. Sardes. Obv: Persian king in kneeling-running stance right, holding spear and bow, and with quiver over shoulder. Rev: Incuse rectangular punch 5,34 g

**4**



**142** ACHAEMENID EMPIRE. Time of Darios II (424-405 BC). Siglos. Sardes. Obv: Persian king in kneeling-running stance right, holding spear and bow, and with quiver over shoulder. Rev: Incuse rectangular punch 5,07 g

**4**



**143** ACHAEMENID EMPIRE. Time of Darios II (424-405 BC). Siglos. Sardes. Obv: Persian king in kneeling-running stance right, holding spear and bow, and with quiver over shoulder. Rev: Incuse rectangular punch 5,02 g

**4**



**144** ACHAEMENID EMPIRE. Time of Darios II (424-405 BC). Siglos. Sardes. Obv: Persian king in kneeling-running stance right, holding spear and bow, and with quiver over shoulder. Rev: Incuse rectangular punch 5,34 g

**4**



**145** ACHAEMENID EMPIRE. Time of Darios II (424-405 BC). Siglos. Sardes. Obv: Persian king in kneeling-running stance right, holding spear and bow, and with quiver over shoulder. Rev: Incuse rectangular punch 5,21 g

**4**



**146** ACHAEMENID EMPIRE. Time of Darios II (424-405 BC). Siglos. Sardes. Obv: Persian king in kneeling-running stance right, holding spear and bow, and with quiver over shoulder. Rev: Incuse rectangular punch 5,50 g

**4**



**147** ACHAEMENID EMPIRE. Time of Darios II (424-405 BC). Siglos. Sardes. Obv: Persian king in kneeling-running stance right, holding spear and bow, and with quiver over shoulder. Rev: Incuse rectangular punch 3,59 g

**4**



**148** ACHAEMENID EMPIRE. Time of Darios II (424-405 BC). Siglos. Sardes. Obv: Persian king in kneeling-running stance right, holding spear and bow, and with quiver over shoulder. Rev: Incuse rectangular punch 5,34 g

**4**





**149** ACHAEMENID EMPIRE. Time of Darios II (424-405 BC). Siglos. Sardes. Obv: Persian king in kneeling-running stance right, holding spear and bow, and with quiver over shoulder. Rev: Incuse rectangular punch 5,07 g

**4**



**150** CILICIA. Uncertain. Obol (4th century BC). Obv: Baaltars seated left, holding grain ear, grapes and sceptre. Rev: Eagle standing left on Plow. SNG France 459-61. Condition: Very fine 0,76 g

**4**



**151** LYCAONIA. Laranda. Obol (Circa 324/3 BC). Obv: Baal seated left on throne, holding grain ear, grape bunch and sceptre. Rev: Forepart of wolf right; inverted crescent above; all within pelleted square border. 0,48 g

**4**



**152** LYCAONIA. Laranda. Obol (Circa 324/3 BC). Obv: Baal seated left on throne, holding grain ear, grape bunch and sceptre. Rev: Forepart of wolf right; inverted crescent above; all within pelleted square border. 0,54 g

**4**



**153** LYCAONIA. Laranda. Obol (Circa 324/3 BC). Obv: Baal seated left on throne, holding grain ear, grape bunch and sceptre. Rev: Forepart of wolf right; inverted crescent above; all within pelleted square border. 0,52 g

**4**



**154** LYCAONIA. Laranda. Obol (Circa 324/3 BC). Obv: Head of Herakles right. Rev: Forepart of wolf right; inverted crescent above. Göktürk 70-81; SNG Levante 227; SNG von Aulock 8656. . 0,51 g

**4**



**155** LYCAONIA. Laranda. Obol (Circa 324/3 BC). Obv: Head of Herakles right. Rev: Forepart of wolf right; inverted crescent above. Göktürk 70-81; SNG Levante 227; SNG von Aulock 8656. . 0,50 g

**4**



**156** PHRYGIA, Eumeneia (Circa 2nd-1st century BC) AE Obv: Helmeted head of Athena right Rev: EYME-NEQN ΔΙΟΦΑΝ, Nike advancing left, holding wreath and palm branch. 6,04 g - 20,40 mm artificially patinated

**4**



**157** SELEUKIS & PIERIA. Seleukeia Pieria. Ae (2nd-1st centuries BC). Obv: Laureate head of Zeus right. Rev: ΣΕΛΕΥΚΕΩΝ. Winged thunderbolt; monogram to lower left. 12,85 g - 22,86 mm

**4**



**158** PISIDIA. Isinda. Ae (2nd-1st centuries BC). Obv: Laureate head of Zeus right. Rev: ΙΣΙΝ. Warrior on horseback galloping right, holding spear; below, coiled serpent; in left field 5,48 g - 19,75 mm

**4**



**159** PISIDIA. Isinda. Ae (2nd-1st centuries BC). Obv: Laureate head of Zeus right. Rev: ΙΣΙΝ. Warrior on horseback galloping right, holding spear; below, coiled serpent; in left field 5,30 g - 19,68 mm

**4**



**160** PHRYGIA. Apameia. Ae (Circa 88-40 BC). Andronikos, son of Alkios, magistrate. Obv: Helmeted bust of Athena right, wearing aegis. Rev: Eagle landing right on maeander pattern; star above, pileoi of the Dioskouroi to left and right .9,25 g - 22,14 mm artificially patinated

**4**



**161** PHRYGIA. Apameia. Ae (Circa 88-40 BC). Andronikos, son of Alkios, magistrate. Obv: Helmeted bust of Athena right, wearing aegis. Rev: Eagle landing right on maeander pattern; star above, pileoi of the Dioskouroi to left and right 6,04 g - 20,08 mm

**4**



**162** PHRYGIA. Apameia. Ae (Circa 88-40 BC). Andronikos, son of Alkios, magistrate. Obv: Helmeted bust of Athena right, wearing aegis. Rev: Eagle landing right on maeander pattern; star above, pileoi of the Dioskouroi to left and right 7,67 g - 21,18 mm

**4**



**163** MYSIA. Pergamon. Ae (Mid-late 2nd century BC). Obv: Laureate head of Asklepios right. Rev: ΑΣΚΛΕΠΙΟΥ / ΣΩΤΗΡΟΣ. Serpent coiled right around omphalos; c/m: owl standing right within round incuse. 8,26 g - 18,85 mm

**4**



**164** PHRYGIA. Apameia. Ae (Circa 100-50 BC). Andronikos and Alkion, magistrates. Obv: Head of Zeus right, wearing oak wreath. Rev: ΑΠΑΜΕΩΝ / ΑΝΔΡΩΝ / ΑΛΚΙ. Facing statue of Artemis Anaitis, with supports. 8,16 g - 21,52 mm

**4**



**165** Greek Coin AE 5,01 g - 16,68 mm

**4**



**166** PISIDIA. Selge. Ae (2nd-1st centuries BC). Obv: Head of Herakles right, with club over shoulder. Rev: CEΛΓΕ. Thunderbolt and bow. 2,22 g - 13,29 mm

**4**



**167** PISIDIA. Etenna. Ae (1st century BC). Obv: Nymph advancing right, head left, holding serpent; vase to left. Rev: E - T. Sickle-shaped knife or harpa 3,24 g - 16,68 mm

**4**



**168** Greek Coin AE 3,32 g - 15,68 mm

**4**



**169** Greek Coin AE 1,62 g - 11,21 mm

**4**



**170** Greek Coin AE 4,47 g - 14,32 mm

**4**



**171** Greek Coin AE 3,66 g - 16,47 mm

**4**



**172** Greek Coin AE 5,07 g - 15,00 mm

**4**



**173** Greek Coin AE 6,23 g - 16,59 mm

**4**



**174** Greek Coin AE 4,06 g - 14,36 mm

**4**



**175** Greek Coin AE 4,48 g - 15,89 mm

**4**



**176** Greek Coin AE 4,53 g - 17,36 mm

**4**



**177** Greek Coin AE 7,70 g - 21,22 mm

**4**



**178** Greek Coin AE 2,97 g - 14,23 mm

**4**



**179** Greek Coin AE 3,79 g - 14,63 mm

**4**



**180** Greek Coin AE 2,81 g - 15,66 mm

**4**



**181** Greek Coin AE 2,36 g - 14,54 mm

**4**



**182** Greek Coin AE 2,29 g - 13,22 mm

**4**



**183** Greek Coin AE 2,82 g - 14,56 mm

**4**



**184** Greek Coin AE 6,17 g - 17,82 mm

**4**



**185** Greek Coin AE 3,83 g - 16,40 mm

**4**



**186** Greek Coin AE 3,94 g - 15,34 mm

**4**



**187** Greek Coin AE 2,35 g - 13,71 mm

**4**



**188** Greek Coin AE 2,63 g - 13,85 mm

**4**



**189** Greek Coin AE 5,29 g - 17,55 mm

**4**



**190** Greek Coin AE 6,37 g - 22,71 mm

**4**



**191** Greek Coin AE 4,23 g - 15,47 mm

**4**



**192** Greek Coin AE 2,45 g - 15,49 mm

**4**



**193** Greek Coin AE 2,53 g - 14,62 mm

**4**



**194** SELEUKIS & PIERIA. Seleukeia Pieria. Tetradrachm (105/4-83/2 BC). Dated CY 13 (97/96 BC). Obv: Veiled and turreted bust of Tyche right. Rev: ΣΕΛΕΥΚΕΩΝ ΤΗΣ ΙΕΡΑΣ / ΚΑΙ ΑΥΤΝΟΜΟΝ. Filleted thunderbolt set upon throne; ΠΙ (date) below, monogram to right; all within wreath. Callataÿ, Production, pp. 73-4; HGC 9, 1382; DCA 697. Condition: Good very fine. 14,14 g - 27,27 mm

**4**



**195** SELEUCIS & PIERIA. Antioch. Ae Tetrachalkon (63-28 BC). Uncertain date. Obv: Laureate head of Zeus right. Rev: ANTIOXEΩN THΣ MHTPOΠOΛEΩΣ. Zeus seated left on throne, holding crowning Nike and sceptre; [date] in exergue 8,02 g - 19,52 mm artificially patinated

**4**



**196** SELEUCIS & PIERIA. Antioch. Ae Tetrachalkon (63-28 BC). Uncertain date. Obv: Laureate head of Zeus right. Rev: ANTIOXEΩN THΣ MHTPOΠOΛEΩΣ. Zeus seated left on throne, holding crowning Nike and sceptre; [date] in exergue 6,88 g - 18,97 mm

**4**



**197** SELEUCIS & PIERIA. Antioch. Pseudo-autonomous. Augustus (27 BC- 14 AD). Ae. Obv: Laureate head of Zeus right. Rev: ANTIOXEΩN MHTPOΠOΛEΩΣ. Ram leaping right, head left; star above, monogram below. 6,89 g - 18,85 mm

**4**



**198** SELEUCIS & PIERIA. Antioch. Ae Tetrachalkon (63-28 BC). Uncertain date. Obv: Laureate head of Zeus right. Rev: ANTIOXEΩN THΣ MHTPOΠOΛEΩΣ. Zeus seated left on throne, holding crowning Nike and sceptre; [date] in exergue 6,66 g - 18,65 mm

**4**



**199** SELEUCIS & PIERIA. Antioch. Ae Tetrachalkon (63-28 BC). Uncertain date. Obv: Laureate head of Zeus right. Rev: ANTIOXEΩN THΣ MHTPOΠOΛEΩΣ. Zeus seated left on throne, holding crowning Nike and sceptre; [date] in exergue 7,03 g - 19,54 mm

**4**



**200** Greek Coin Ae 3,87 g - 18,00 mm

**4**





**201** SYRIA, Seleucis and Pieria. Antioch, 1st century BC. AE. Laureate head of Zeus right. Rev. ANTIOXEOQN MHTPOΠOΛEΩΣ - AYTONOMOY. Tripod. 6,12 g - 19,71 mm artificially patinated

**4**



**202** Greek Coin Ae 6,83 g - 18,20 mm

**4**



**203** Greek Coin Ae 5,60 g - 18,40 mm

**4**



**204** SELEUKID KINGDOM. Antiochos VIII Epiphanes (Grypos) (121/0-97/6 BC). Ae. Antioch on the Orontes. Dated SE 198 (115/4 BC). Obv: Radiate head right. Rev: ΒΑΣΙΛΕΩΣ ΑΝΤΙΟΧΟΥ / ΕΠΙΦΑΝΟΥΣ. Eagle standing left, sceptre over shoulder; 5,78 g - 18,65 mm

**4**



**205** Greek Coin Ae 6,34 g - 17,32 mm

**4**



**206** SELEUKID KINGDOM. Antiochos VIII Epiphanes (Grypos) (121/0-97/6 BC). Ae. Antioch on the Orontes. Dated SE 198 (115/4 BC). Obv: Radiate head right. Rev: ΒΑΣΙΛΕΩΣ ΑΝΤΙΟΧΟΥ / ΕΠΙΦΑΝΟΥΣ. Eagle standing left, sceptre over shoulder; 6,34 g - 17,69 mm

**4**



**207** Greek Coin Ae 5,23 g - 17,57 mm

**4**



**208** SELEUKID KINGDOM. Antiochos VII Euergetes (Sidetes) (138-129 BC). Ae. Ake-Ptolemaïs. Dated SE 177 (136/5 BC). Obv: Winged bust of Eros right. Rev: ΒΑΣΙΛΕΩΣ ΑΝΤΙΟΧΟΥ ΕΥΕΡΓΕΤΟΥ. Isis headdress; 5,91 g - 17,06 mm

**4**



**209** Greek Coin Ae 4,75 g - 18,36 mm

**4**



**210** SELEUKID KINGDOM. Antiochos VII Euergetes (Sidetes) (138-129 BC). Ae. Ake-Ptolemaïs. Dated SE 177 (136/5 BC). Obv: Winged bust of Eros right. Rev: ΒΑΣΙΛΕΩΣ ΑΝΤΙΟΧΟΥ ΕΥΕΡΓΕΤΟΥ. Isis headdress; 6,35 g - 18,07 mm

**4**



**211** Greek Coin Ae 4,49 g - 18,98 mm

**4**



**212** SELEUKID KINGDOM. Antiochos VII Euergetes (Sidetes) (138-129 BC). Ae. Ake-Ptolemaïs. Dated SE 177 (136/5 BC). Obv: Winged bust of Eros right. Rev: ΒΑΣΙΛΕΩΣ ΑΝΤΙΟΧΟΥ ΕΥΕΡΓΕΤΟΥ. Isis headdress; 6,10 g - 19,84 mm

**4**



**213** Greek Coin Ae 6,39 g - 18,55 mm

**4**



**214** KINGS OF CAPPADOCIA. Drachm. OBV: head right. Rev : Athena standing left, holding Nike and spear, and resting hand upon shield. 3,86 g

**4**



**215** KINGS OF CAPPADOCIA. Drachm. OBV: head right.Rev : Athena standing left, holding Nike and spear, and resting hand upon shield. 3,88 g

**4**



**216** KINGS OF CAPPADOCIA. Drachm. OBV: head right.Rev : Athena standing left, holding Nike and spear, and resting hand upon shield. 3,19 g

**4**



**217** KINGS OF CAPPADOCIA. Drachm. OBV: head right.Rev : Athena standing left, holding Nike and spear, and resting hand upon shield. 3,54 g

**4**



**218** KINGS OF CAPPADOCIA. Drachm. OBV: head right.Rev : Athena standing left, holding Nike and spear, and resting hand upon shield. 3,41 g

**4**



**219** KINGS OF CAPPADOCIA. Drachm. OBV: head right.Rev : Athena standing left, holding Nike and spear, and resting hand upon shield. 3,34 g

**4**



**220** KINGS OF CAPPADOCIA. Drachm. OBV: head right.Rev : Athena standing left, holding Nike and spear, and resting hand upon shield. 2,99 g

**4**



**221** KINGS OF CAPPADOCIA. Drachm. OBV: head right.Rev : Athena standing left, holding Nike and spear, and resting hand upon shield. 3,39 g

**4**



**222** KINGS OF CAPPADOCIA. Drachm. OBV: head right.Rev : Athena standing left, holding Nike and spear, and resting hand upon shield. 3,61 g

4



**223** KINGS OF CAPPADOCIA. Drachm. OBV: head right.Rev : Athena standing left, holding Nike and spear, and resting hand upon shield. 3,60 g

4



**224** KINGS OF CAPPADOCIA. Drachm. OBV: head right.Rev : Athena standing left, holding Nike and spear, and resting hand upon shield. 3,31 g

4



**225** KINGS OF CAPPADOCIA. Drachm. OBV: head right.Rev : Athena standing left, holding Nike and spear, and resting hand upon shield. 3,50 g

4



**226** KINGS OF CAPPADOCIA. Drachm. OBV: head right.Rev : Athena standing left, holding Nike and spear, and resting hand upon shield. 4,04 g

4



**227** PONTOS. Komana. Ae (1st century BC). Obv: Laureate bust of Ma right. Rev: KO - MA / ΝΩ - Ν. Tripod; SNG BM BS 1265 var. (eagle head on obv.); HGC 7, 282 var. (same). Condition: Very fine. 7,04 g - 22,64 mm

4



**228** PHRYGIA. Laodicea ad Lycum. Tiberius (14-37). Ae. Dioskourides, magistrate. Obv: ΣΕΒΑΣΤΟΣ. Bare head right. Rev: ΔΙΟΣΚΟΥΡΙΔΗΣ / ΛΑΟΔΙΚΕΩΝ. Zeus standing left, holding eagle and sceptre; monogram to outer right. 5,24 g - 18,44 mm

4



**229** PHRYGIA. Laodicea ad Lycum. Tiberius (14-37). Ae. Dioskourides, magistrate. Obv: ΣΕΒΑΣΤΟΣ. Bare head right. Rev: ΔΙΟΣΚΟΥΡΙΔΗΣ / ΛΑΟΔΙΚΕΩΝ. Zeus standing left, holding eagle and sceptre; monogram to outer right. 6,02 g - 20,16 mm

4



**230** MYSIA. Pergamum. Augustus (27 BC-14 AD). Ae. Charinos, grammateus. Obv: ΣΕΒΑΣΤΟΣ. Laureate head right. Rev: ΧΑ - ΠΙ / ΝΟC - ΓΡΑΜ / ΜΑ - ΤΕΙ / Ω - Ν. Hexastyle temple. 5,26 g - 20,81 mm

4



**231** PHRYGIA. Amorium. Augustus (27 BC-14 AD). Ae. Alexandros Kallippou, magistrate. Obv: ΣΕΒΑΣΤΟΣ. Bare head right; lituus to right. Rev: ΚΑΛΛΙΠΠΟΣ ΑΜΟΡΙΑΝΩΝ. Eagle standing right on thunderbolt, with caduceus over shoulder 4,62 g - 18,15 mm

4



**232** PHRYGIA. Aezanis. Claudius (41-54). Ae. Menogenes, son of Nanna, magistrate. Obv: ΚΛΑΥΔΙΟΣ ΚΑΙΣΑΡ. Laureate head right. Rev: ΕΠΙ ΜΗΝΟΓΕΝΟΝ ΤΟΝ ΝΑΝΝΑ ΑΙΖΑΝΙΤΩΝ. Zeus standing left, holding eagle and sceptre. 4,89 g - 19,80 mm

4



**233** PHRYGIA. Aezanis. Claudius (41-54). Ae. Klaudios Hierax, magistrate. Obv: ΚΛΑΥΔΙΟΝ ΚΑΙΣΑΡΑ ΑΙΖΑΝΙΤΑΙ. Laureate head right. Rev: ΕΠΙ ΚΛΑΥΔΙΟΥ ΙΕΡΑΚΟΣ. Zeus standing left, holding eagle and sceptre. 4,83 g - 21,38 mm

4



**234** Roman Provincial Coin. Ae 6,44 g - 23,15 mm artificially patinated

4



**235** PHRYGIA. Philomelium. Claudius (41-54). Ae. Brocchos, magistrate. Obv: ΣΕΒΑΣΤΟΣ. Bare head right. Rev: ΒΡΟΚΧΟΙ ΦΙΛΟΜΗΛΕΩΝ. Zeus seated left on throne, holding patera and sceptre. .6,11 g - 20,30 mm

**4**



**236** BITHYNIA. Nicaea. C. Papirius Carbo (Proconsul, 62-59 BC). Ae Dichalkon. Dated Proconsular era 224 (59/8 BC). Obv: ΝΙΚΑΙΕΩΝ. Head of Dionysos right, wearing ivy wreath; ΔΚΣ (date) below, monogram to right. Rev: ΕΠΙ ΓΑΙΟΥ / ΠΑΠΙΡΙΟΥ ΚΑΡΒΩΝΟΣ / ΡΩΜΗ. Roma seated left on pile of shields, holding Nike and spear. 7,74 g - 24,42 mm

**4**



**237** Roman Provincial Coin. Ae 4,35 g - 21,88 mm

**4**



**238** Roman Provincial Coin. Ae 7,72 g - 23,99 mm

**4**



**239** Roman Provincial Coin. Ar 6,37 g - 18,62 mm

**4**



**240** Roman Provincial Coin. Ae 4,67 g - 19,13 mm artificially patinated

**4**



**241** Roman Provincial Coin. Ae 5,19 g - 19,43 mm

**4**



**242** LYCAONIA. Laodicea Combusta. Vespasian (69-79). Ae. Obv: ΑΥΤΟΚΡΑΤΩΡ ΚΑΙΣΑΡ ΟΥΕΣΠΑΙΑΝΟC. Laureate head right. Rev: CEBACTH NEIKH KΛAYΔIOΛAODIKEΩN. Nike standing left, holding wreath and palm branch. 10,53 g - 24,88 mm

**4**



**243** Roman Provincial Coin. Ae 5,65 g - 22,15 mm

**4**



**244** Roman Provincial Coin. Ae 3,44 g - 20,32 mm

**4**



**245** LYCAONIA. Laodicea Catacecaumene (as Claudiolaodicea Combusta). Titus and Domitian (Caesares, 69-79 and 69-81, respectively). Ae. Obv: TITOC KAI ΔOMITIANOC KAICAPEC. Bare heads of Titus and Domitian facing one another. Rev: KΛAYΔIOΛAODIKEΩN. Kybele seated left on throne, holding patera and resting elbow upon tympanum; below, lion left 7,06 g - 19,15 mm

**4**



**246** LYCAONIA. Iconium (as Claudiconium). Nero (54-68). Ae. Obv: NEPΩN KAICAP CEBACTOC. Laureate head of Nero right. Rev: KΛAYΔEIKONIEΩN. Veiled head of Perseus right, with harpa over shoulder. 4,95 g - 20,77 mm

**4**



**247** Roman Provincial Coin. Ae 11,93 g - 25,48 mm

**4**



**248** Roman Provincial Coin. Ae 12,20 g - 29,68 mm

**4**



**249** Roman Provincial Coin. Ae 11,93 g - 24,43 mm

**4**



**250** Roman Provincial Coin. Ae 9,91 g - 24,84 mm

**4**



**251** CAPPADOCIA. Caesarea. Hadrian (117-138). Hemidrachm. Dated RY 4 (119/20). Obv: ΑΥΤΟ ΚΑΙC ΤΡΑΙ ΑΔΡΙΑΝΟC CΕΒΑCΤ. Laureate bust right, with slight drapery. Rev: ΕΤ - Δ. Mt. Argaeus surmounted by Helios standing left, holding globe and sceptre. 1,73 g - 14,42 mm

**4**



**252** CAPPADOCIA. Caesarea. Hadrian (117-138). Hemidrachm. Dated RY 5 (120/1). Obv: ΑΥΤΟ ΚΑΙC ΤΡΑΙ ΑΔΡΙΑΝΟC CΕΒΑCΤ. Laureate, draped and cuirassed bust right. Rev: ΕΤ Ε. Nike advancing right, holding wreath and palm frond. 1,42 g - 13,82 mm

**4**



**253** CAPPADOCIA. Caesarea. Hadrian (117-138). Hemidrachm. Dated RY 4 (119/20). Obv: ΑΥΤΟ ΚΑΙC ΤΡΑΙ ΑΔΡΙΑΝΟC CΕΒΑCΤ. Laureate bust right, with slight drapery. Rev: ΕΤ - Δ. Mt. Argaeus surmounted by Helios standing left, holding globe and sceptre. 1,66 g - 14,29 mm

**4**





**254** CAPPADOCIA. Caesarea. Hadrian (117-138). Hemidrachm. Dated RY 5 (120/1). Obv: ΑΥΤΟ ΚΑΙC ΤΡΑΙ ΑΔΡΙΑΝΟC CΕΒΑCΤ. Laureate, draped and cuirassed bust right. Rev: ΕΤ Ε. Nike advancing right, holding wreath and palm frond. 1,61 g - 13,24 mm

**4**



**255** CAPPADOCIA. Caesarea. Hadrian (117-138). Hemidrachm. Dated RY 5 (120/1). Obv: ΑΥΤΟ ΚΑΙC ΤΡΑΙ ΑΔΡΙΑΝΟC CΕΒΑCΤ. Laureate, draped and cuirassed bust right. Rev: ΕΤ Ε. Nike advancing right, holding wreath and palm frond. 1,52 g - 15,25 mm

**4**



**256** CAPPADOCIA. Caesarea. Hadrian (117-138). Hemidrachm. Dated RY 5 (120/1). Obv: ΑΥΤΟ ΚΑΙC ΤΡΑΙ ΑΔΡΙΑΝΟC CΕΒΑCΤ. Laureate, draped and cuirassed bust right. Rev: ΕΤ Ε. Nike advancing right, holding wreath and palm frond. 1,19 g - 14,92 mm

**4**



**257** CAPPADOCIA. Caesarea. Antoninus Pius (138-161). Ae. Obv: ΑΥΤΟΚ ΑΝΤΩΝΕΙΝΟC CΕΒΑCΤΟC. Laureate head right. Rev: ΥΠΑΤΟC Δ ΠΑΤΗΡ ΠΑΤΡΙΔΟC. Club. RPC IV online 6719. Condition: Very fine. 6,44 g - 21,74 mm

**4**



**258** CAPPADOCIA. Caesarea. Antoninus Pius (138-161). Drachm. Obv: ΑΥΤΟΚΡ ΑΝΤΩΝΕΙΝΟC CΕΒΑCΤΟC. Laureate, draped and cuirassed bust right. Rev: ΥΠΑΤΟC Β. Μt. Αργαίος; at summit, Helios standing left, holding globe and scepter. 2,72 g - 18,23 mm

**4**



**259** CAPPADOCIA. Caesarea. Antoninus Pius (138-161). Drachm. Obv: ΑΥΤΟΚΡ ΑΝΤΩΝΕΙΝΟC CΕΒΑCΤΟC. Laureate, draped and cuirassed bust right. Rev: ΥΠΑΤΟC Β. Μt. Αργαίος; at summit, Helios standing left, holding globe and scepter. Condition :Fin 2,67 g - 17,63 mm

**4**



**260** CAPPADOCIA. Caesarea. Antoninus Pius (138-161). Didrachm. Obv: ΑΥΤΟΚΡ ΑΝΤΩΝΕΙΝΟΣ ΣΕΒΑΣΤΟΣ. Laureate, draped and cuirassed bust right. Rev: ΥΠΑΤΟΣ Β. Mt. Argaios; at summit, Helios standing left, holding globus and sceptre. Condition :Fin 5,95 g - 21,24 mm

4



**261** Roman Provincial Coin. Ae 11,77 g - 23,36 mm

4



**262** Roman Provincial Coin. Ae 10,00 g - 22,25 mm

4



**263** LYCAONIA. Iconium. Antoninus Pius (138-161). Ae. Obv: ANTONINVS AVG PIVS. Laureate, draped and cuirassed bust of Antoninus Pius right. Rev: COL ICO. Helmeted and draped bust of Athena right. 4,05 g - 17,37 mm

4



**264** PISIDIA. Antioch. Commodus (177-192). Ae. Obv: ANTONINVS COMMODVS. Laureate, draped and cuirassed bust left. Rev: ANTIOCH COLONIAE. Mên standing right, with foot on bucranium, holding sceptre and crowning Nike; to left, cock standing left. 5,34 g - 21,99 mm

4



**265** IONIA. Ephesos. Domitia (82-96). Ae. Caesennius Paetus, proconsul. Obv: Draped bust right. Rev: Cult statue of Artemis Ephesia standing facing. Homonoia issue with Smyrna . 5,21 g - 20,32 mm

4



**266** CAPPADOCIA. Caesarea. Trajan (98-117). Ae. T. Pomponius Bassus, presbeutes. Dated RY 3 (100/1). Obv: ΑΥΤ ΚΑΙ ΝΕΡ ΤΡΑΙΑΝΟC CΕΒ ΓΕΡΜ. Laureate head right. Rev: ΕΠΙ ΒΑCCOΥ / ΕΤ Γ. Mt. Argaeus surmounted by wreath. 2,61 g - 16,32 mm

**4**



**267** Roman Provincial Coin Ae 3,23 g - 17,31 mm

**4**



**268** LYCAONIA. Lystra. Faustina II (Augusta, 147-175). Ae. Obv: FAVSTINAS AVGVSTAS. Draped bust right. Rev: COL IVL LVSTRA. Fortuna/Tyche seated facing on rocks, holding poppy and grain ears; river god below swimming left. 6,32 g - 20,57 mm

**4**



**269** Roman Provincial Coin Ae 5,34 g - 21,21 mm

**4**



**270** GALATIA. Pessinus. Marcus Aurelius (161-180). Obv: A K M A ANTΩNEINOC. Laureate, draped and cuirassed bust right. Rev: ΠΕCЦИΝΟVNTΙΩΝ. 17,99 g - 29,81 mm

**4**



**271** Roman Provincial Coin Ae 6,20 g - 24,53 mm

**4**



**272** Roman Provincial Coin Ae 5,69 g - 21,20 mm

**4**



**273** Roman Provincial Coin Ae 9,51 g - 22,64 mm

**4**



**274** Roman Provincial Coin Ae 6,86 g - 21,10 mm

**4**



**275** Roman Provincial Coin Ae 5,55 g - 20,54 mm

**4**



**276** Roman Provincial Coin Ae 6,86 g - 18,66 mm

**4**



**277** PHRYGIA, Hierapolis. Commodus. AD 177-192. Æ 20,98 g - 35,84 mm

**4**



**278** PHRYGIA. Cibyra. Marcus Aurelius, 161-180. Ae 21,83 g - 34,24 mm

**4**



**279** Roman Provincial Coin Ae 13,31 g - 30,23 mm

**4**



**280** Roman Provincial Coin Ae 16,63 g - 28,28 mm

**4**



**281** CAPPADOCIA. Caesarea. Septimius Severus (193-211). Ae. Obv: AY KA CEΠ CEOYHPOC AYΓ. Laureate head right. Rev: ΜΗΤΡΟΠ ΚΑΙΣΑΡΕ / ΕΤ ΙΓ. Agalma of Mount Argaeus on altar. 13,98 g - 28,82 mm

**4**



**282** CAPPADOCIA. Caesarea. Septimius Severus (193-211). Ae. Dated RY 4 (195/6). Obv: AV Λ CEΠ CEOYHPOC. Laureate head right. Rev: ΜΗΤΡΟΠ ΚΑΙΣΑΡΕ / ΕΤ Δ. Mt. Argaeus. 3,82 g - 16,17 mm

**4**



**283** PISIDIA. Antioch. Septimius Severus (193-211). Ae. 5,99 g - 22,05 mm

**4**



**284** PISIDIA. Antioch. Septimius Severus (193-211). Ae. 5,20 g - 23,97 mm

**4**



**285** CAPPADOCIA. Caesarea. Septimius Severus (193-211). Drachm. 2,61 g - 18,36 mm

**4**



**286** CAPPADOCIA. Caesarea. Septimius Severus (193-211). Drachm. 2,51 g - 17,58 mm

**4**



**287** LYDIA. Thyateira. Julia Domna (Augusta, 193-211). Ae 6,38 g - 24,43 mm

**4**



**288** PISIDIA. Antioch. Julia Domna (Augusta, 193-217). Ae. Obv: IVLIA AVGVSTA. Draped bust right. Rev: ANTIOCH GENI COL CAES. Tyche standing left, holding branch and cornucopia. Condition :Very Fine 5,98 g - 23,07 mm artificially patinated

**4**



**289** Thrace, Byzantium, Caracalla (A.D. 198-217), Æ 22,24 g - 32,47 mm

**4**



**290** PISIDIA. Antiochia. Caracalla (198-217). Ae. Obv: IMP C M AVR ANTONI AV. Laureate head right. Rev: ANTIOCH GENI COL CAE. Tyche standing left, holding rod and cornucopia. 5,98 g - 23,15 mm

**4**



**291** CAPPADOCIA. Caesarea. Caracalla (198-217). Drachm. Dated RY 16 (207/8). Obv: AY KAI M AYP ANTΩNINOC. Laureate head right. Rev: MHTP KAIC NEΩ / ET Iç. Mt. Argaios surmounted by star. 2,79 g - 18,59 mm

**4**



**292** PAMPHYLIA. Perge. Caracalla (198-217). Ae. Obv: AV K M AVP ANTΩNINOC CEB. Laureate head right. Rev: ΠΕΡΓΑΙΩΝ. Cult statue of Artemis Pergaia within distyle temple with domed roof; eagle standing facing, head left in pediment. 12,74 g - 25,39 mm

**4**



**293** Caracalla (198-217). Ae. 11,30 g - 25,99 mm

**4**



**294** Caracalla (198-217). Ae. 4,97 g - 20,53 mm

**4**



**295** Caracalla (198-217). Ae. 2,57 g - 17,27 mm

**4**



**296** CAPPADOCIA. Caesarea. Caracalla (198-217). Ae. Dated RY 2 of Septimius Severus (194). Obv: AV K M AVPHΛIOC ANTΩNEINOC. Laureate, draped and cuirassed bust right. Rev: MHTPO KAICAPIA / ET B / NEΩKO. Mt. Argaeus; star above. 13,07 g - 28,22 mm artificially patinated

**4**



**297** Caracalla (198-217). Ae. 10,20 g - 27,40 mm

**4**



**298** PHRYGIA. Hierapolis. Caracalla (198-217) Ae 11,80 g - 30,71 mm

**4**



**299** PHRYGIA. Hierapolis. Caracalla (198-217) Ae 17,21 g - 34,11 mm

**4**



**300** PHRYGIA. Hierapolis. Caracalla (198-217) Ae 10,00 g - 30,00 mm

**4**



**301** PHRYGIA. Hierapolis. Caracalla (198-217) Ae 10,88 g - 28,62 mm

**4**



**302** PHRYGIA. Hierapolis. Caracalla (198-217) Ae 12,60 g - 28,38 mm

**4**



**303** PHRYGIA. Hierapolis. Caracalla (198-217) Ae 11,54 g - 29,19 mm

**4**



**304** PHRYGIA. Hierapolis. Caracalla (198-217) Ae 10,21 g - 29,87 mm

**4**



**305** PHRYGIA. Hierapolis. Caracalla (198-217) Ae 9,91 g - 29,19 mm

**4**



**306** PHRYGIA. Hierapolis. Caracalla (198-217) Ae 9,91 g - 28,34 mm

**4**



**307** PHRYGIA. Hierapolis. Caracalla (198-217) Ae 9,67 g - 28,41 mm

**4**





**308** PHRYGIA. Hierapolis. Caracalla (198-217) Ae 9,46 g - 27,82 mm

**4**



**309** PHRYGIA. Hierapolis. Caracalla (198-217) Ae 4,60 g - 21,80 mm

**4**



**310** CAPPADOCIA. Caesarea. Elagabal (218-222). Ae. Obv: AY K M AYPH ANTΩNEINOC CE. Laureate, draped and cuirassed bust right. Rev: ΜΗΤΡΟΠΟ ΚΑΙCΑΡΗ. Mount Argaeus; on altar, 10,90 g - 27,15 mm

**4**



**311** PAMPHYLIA. Perge. Elagabalus (218-222). Ae. Obv: AY K M AY ANTΩNINOC. Radiate, draped and cuirassed bust right. Rev: ΠΕΡΓΑΙΩΝ. Tyche standing left, holding rudder and cornucopia. 10,00 g - 23,04 mm

**4**



**312** Roman Provincial Coin Ae 4,37 g - 17,58 mm

**4**



**313** Roman Provincial Coin Ae 19,14 g - 34,58 mm

**4**



**314** Roman Provincial Coin Ae 18,53 g - 33,16 mm

**4**



**315** Roman Provincial Coin Ae 7,62 g - 25,09 mm

**4**



**316** Roman Provincial Coin Ae 4,41 g - 21,74 mm

**4**



**317** Roman Provincial Coin Ae 7,82 g - 21,94 mm

**4**



**318** Roman Provincial Coin Ae 4,28 g - 16,85 mm

**4**



**319** Roman Provincial Coin Ae 7,33 g - 23,10 mm

**4**



**320** Roman Provincial Coin Ae 8,94 g - 24,46 mm

**4**



**321** Roman Provincial Coin Ae 16,69 g - 33,52 mm

**4**



**322** Roman Provincial Coin Ae 6,43 g - 22,05 mm

**4**



**323** Roman Provincial Coin Ae 5,69 g - 20,19 mm

**4**



**324** Roman Provincial Coin Ae 11,65 g - 26,12 mm

**4**



**325** Roman Provincial Coin Ae 17,43 g - 34,69 mm

**4**



**326** PHRYGIA. Hierapolis. Homonoia with Ephesus. Philip II (247-249). Ae. 18,80 g - 38,80 mm

**4**



**327** PHRYGIA. Hierapolis. Philip I, 244-249. Homonoia with Cyzicus. ΑΥΤ Κ ΙΟΥΛ ΦΙΛΙΠΠΟΣ ΑΥΓΙ (sic!) Laureate, draped and cuirassed bust of Philip I to right, seen from behind. Rev. ΙΕΡΑΠΟΛΕΙΤΩΝ Κ ΚΥΖΙΚΗΝΩΝ / ΟΜΟΝΟΙΑ Apollo of Hierapolis standing right, holding plectrum in his right hand and lyre in his left, facing Demeter of Kyzikos, standing left, holding scepter in her left hand. 14,45 g - 36,89 mm

**4**



**328** PISIDIA. Antioch. Philip I the Arab (244-249). Ae. Obv: IMP M IVL PHILIPPVS AVG. Radiate, draped and cuirassed bust right. Rev: CAES ANTIOCHI COL / S R. Vexillum surmounted by eagle; aquila to left and right. 7,90 g - 26,28 mm

**4**



**329** PISIDIA. Antioch. Philip I the Arab (244-249). Ae. Obv: IMP M IVL PHILIPPVS AVG. Radiate, draped and cuirassed bust right. Rev: CAES ANTIOCHI COL / S R. Vexillum surmounted by eagle; aquila to left and right. 8,34 g - 25,70 mm

**4**



**330** PISIDIA. Antioch. Philip I the Arab (244-249). Ae. Obv: IMP M IVL PHILIPPVS AVG. Radiate, draped and cuirassed bust right. Rev: CAES ANTIOCHI COL / S R. Vexillum surmounted by eagle; aquila to left and right. 9,37 g - 24,70 mm

**4**



**331** PISIDIA. Antioch. Philip I the Arab (244-249). Ae. Obv: IMP M IVL PHILIPPVS AVG. Radiate, draped and cuirassed bust right. Rev: CAES ANTIOCHI COL / S R. Vexillum surmounted by eagle; aquila to left and right. 7,24 g - 24,95 mm artificially patinated

**4**



**332** Phrygia. Hierapolis . Philip II as Caesar AD 244-247. Æ M IOYΛ ΦΙΛΙΠΠΟΣ ΚΑΙ; bareheaded, draped, and cuirassed bust right / ΙΕΡΑΠΟΛ-ΕΙΤΩΝ; Tyche standing facing, head left, holding rudder in right and cornucopia in left hand; ears of corn in left field. 12,44 g - 30,54 mm

**4**



**333** Phrygia. Hierapolis. Philip II as Caesar AD 244-247. Æ M IOYΛ ΦΙΛΙΠΠΟΣ ΚΑΙ, bare headed, cuirassed and draped bust right / ΙΕΡΑΠΟΛΕΙΤΩΝ Κ ΣΑΡΔΙΑΝΩΝ ΝΕΩΚΟΡΩΝ ΟΜΟΝΟΙΑ, two prize crowns 9,83 g - 29,37 mm

**4**



**334** Phrygia. Hierapolis. Philip II as Caesar AD 244-247. AE Obv: Μ ΙΟΥΛ ΦΙΛΙΠΠΟΣ ΚΑΙ; bare-headed, draped and cuirassed bust of Philip II. Rev: ΙΕΡΑΠΟΛΕΙΤΩΝ; cult statue of Artemis Ephesia standing facing between two stags. 9,22 g - 28,18 mm

**4**



**335** Roman Provincial Coin Ae 10,73 g - 27,69 mm

**4**



**336** Roman Provincial Coin Ae 8,74 g - 24,91 mm

**4**



**337** Phrygia. Hierapolis . Pseudo-autonomous issue circa AD 176-225. Ae 4,53 g - 21,43 mm

**4**



**338** Roman Provincial Coin AE 13,84 g - 29,56 mm

**4**



**339** Roman Provincial Coin AE 4,05 g - 18,21 mm

**4**



**340** Roman Provincial Coin AE 4,20 g - 18,87 mm

**4**



**341** Roman Provincial Coin AE 2,79 g - 18,24 mm

**4**



**342** Roman Provincial Coin AE 3,87 g - 18,89 mm

**4**



**343** Roman Provincial Coin AE 3,90 g - 18,57 mm

**4**



**344** Roman Provincial Coin AE 7,81 g - 24,07 mm

**4**



**345** Roman Provincial Coin AE 9,10 g - 26,00 mm

**4**



**346** Roman Provincial Coin AE 15,04 g - 29,80 mm

**4**



**347** Roman Provincial Coin AE 5,36 g - 18,66 mm

**4**



**348** Roman Provincial Coin AE 2,59 g - 15,56 mm

**4**



**349** Roman Provincial Coin AE 3,92 g - 16,97 mm

**4**



**350** PHRYGIA. Synnada. Pseudo-autonomous. Time of Claudius (41-54). Ae. Artemon, tropheus and high priest. Obv: CYNNAΔΕΩΝ. Helmeted and draped bust of Athena right. Rev: ΑΡΤΕΜΩΝΟC ΤΡΟΦΕΩC. Owl, with head facing, standing right on overturned amphora 2,98 g - 18,20 mm

**4**



**351** PISIDIA. Antioch. Pseudo-autonomous. Time of Antoninus Pius (138-161). Ae. Obv: ΑΝΤΙ ΑΘΟΗΑΘ. Draped bust of Mên left, wearing Phrygian cap and with crescents on shoulder. Rev: COLONI. Cock standing right. 1,29 g - 12,96 mm

**4**



**352** PHRYGIA. Hierapolis. Pseudo-autonomous. Time of Philip I 'the Arab' (244-249). AE 4,02 g - 20,16 mm

**4**



**353** PHRYGIA. Hierapolis. Pseudo-autonomous issue. Diassarion AE 5,94 g - 24,54 mm

**4**



**354** PHRYGIA. Hierapolis. Pseudo-autonomous issue. Diassarion AE 5,90 g - 24,49 mm

**4**



**355** Roman Provincial Coin Ae 6,69 g - 24,22 mm

**4**



**356** Roman Provincial Coin Ae 4,31 g - 18,08 mm

**4**



**357** Roman Provincial Coin Ae 3,31 g - 15,08 mm

**4**



**358** Roman Provincial Coin Ae 2,50 g - 16,09 mm

**4**



**359** Roman Provincial Coin Ae 2,82 g - 15,66 mm

**4**



**360** Roman Provincial Coin Ae 1,47 g - 14,06 mm

**4**



**361** Roman Provincial Coin Ae 3,23 g - 16,12 mm

**4**





**362** Roman Provincial Coin Ae 3,02 g - 14,21 mm

4



**363** Roman Provincial Coin Ae 2,76 g - 16,66 mm

4



**364** Roman Provincial Coin Ae 2,52 g - 15,11 mm

4



**365** Roman Provincial Coin Ae 2,66 g - 13,30 mm

4



**366** Roman Provincial Coin Ae 5,18 g - 20,37 mm

4



**367** Roman Provincial Coin Ae 4,54 g - 17,90 mm

4



**368** PHRYGIA. Hierapolis. Otacilia Severa (Augusta, 244-249). Ae  
Obv : MAPK ΩΤΑΚΙΑ ΣΕΒΗΡΑ ΣΕΒ; diademed and draped bust of  
Otacilia Severa, Rev : ΙΕΡΑΠΟΛΕΙΤΩΝ Κ ΣΜΥΡΝ ΝΕΩΚΟΡΩΝ  
ΟΜΟΝΟΙΑ; Nike standing r., holding palm, facing Tyche of Smyrna  
standing l., holding rudder and cornucopia. 11,29 g - 28,83 mm

4



**369** PHRYGIA. Hierapolis. Otacilia Severa (Augusta, 244-249). Ae. Obv: ΜΑΡΚ ΟΤΑΚΙΑ ΣΕΒΗΡΑ ΣΕΒ. Draped bust right, wearing stephane. Rev: ΙΕΡΑΠΟΛΕΙΤΩΝ. Prize table holding agonistic crown containing two palms. RPC 20714. Condition:very fine. 8,10 g - 29,24 mm

**4**



**370** PHRYGIA. Hierapolis. Otacilia Severa (Augusta, 244-249). Ae. Obv: ΜΑΡΚ ΟΤΑΚΙΑ ΣΕΒΗΡΑ ΣΕΒ. Draped bust right, wearing stephane. Rev: ΙΕΡΑΠΟΛΕΙΤΩΝ. Prize table holding agonistic crown containing two palms. RPC 20714. Condition:very fine. 10,62 g - 29,43 mm

**4**



**371** PHRYGIA. Hierapolis. Otacilia Severa (Augusta, 244-249). Ae. Homonoia issue with Ephesus. Obv: Μ ΩΤ ΣΕΒΗΡΑ. Draped bust right, wearing stephane. Rev: ΙΕΡΑΠΟΛΕΙΤΩΝ Κ ΕΦΕΣΙΩΝ ΝΕΩΚΟ / ΡΩΝ ΟΜΟΝΟΙΑ. Π and Ε within wreaths. Rare 5,40 g - 24,11 mm

**4**



**372** PHRYGIA. Hierapolis. Pseudo-autonomous issue Ae 12,70 g - 28,56 mm

**4**



**373** PHRYGIA. Hierapolis. Pseudo-autonomous issue. Tetrassarion time of Elagabalus AE Obv :ΔΗΜΟC laureate head of Demos, r., with drapery. Rev :ΙΕΡΑΠΟΛΕΙΤΩΝ ΝΕΩΚΟΡΩΝ river god Chrysorrhoas reclining, l., holding corn and poppy ears and resting on vase from which water flows; sometimes, star above. Rare 15,70 g - 31,24 mm

**4**



**374** PHRYGIA. Hierapolis. Pseudo-autonomous issue. Tetrassarion time of Elagabalus. Obv : ΔΗΜΟΣ , laureate head of Demos, r., with drapery. Rev : ΙΕΡΑΠΟΛΕΙΤΩΝ ΝΕΩΚΟΡΩΝ ΑΚΤΙΑ , athlete standing facing, head r., holding palm branch and wreath over his head 9,78 g - 29,67 mm

**4**



**375** PHRYGIA. Hierapolis. Pseudo-autonomous issue. Tetrassarion time of Elagabalus, 218-222. ΔΗΜΟΣ Diademed head of Demos to right, with slight drapery on his left shoulder. Rev. ΙΕΡΑΠΟΛΕΙΤΩΝ ΝΕΩΚΟΡΩΝ Tyche standing front, head to left, holding rudder with her right hand and cornucopiae with her left. AE 11,25 g - 29,78 mm

**4**



**376** PHRYGIA. Hierapolis. Pseudo-autonomous issue. Tetrassarion, time of Elagabalus, 218-222. ΔΗΜΟΣ Diademed head of Demos to right, Extremely Rare. 12,49 g - 31,49 mm

**4**



**377** PHRYGIA. Hierapolis. Pseudo-autonomous issue. Ae 10,48 g - 26,76 mm

**4**



**378** Roman Provincial Coin Ae 17,59 g - 31,44 mm

**4**



**379** Roman Provincial Coin Ae 9,93 g - 26,98 mm

**4**



**380** Roman Provincial Coin Ae 20,58 g - 36,09 mm

**4**



**381** Roman Provincial Coin Ae 10,16 g - 29,37 mm

**4**



**382** TROAS. Alexandria. Volusian (251-253). Ae. Obv: IMP C VIBI AFINI OLVSSIANV. Laureate, draped and cuirassed bust right. Rev: COL AVG TROA. Apollo standing left, foot set on cippus, holding branch. 6,70 g - 22,97 mm

**4**



**383** PAMPHYLIA. Perge. Gallienus (253-268). Ae 10 Assaria. Obv: ΑΥΤ ΚΑΙ ΠΟ ΛΙ ΓΑΛΛΙΗΝΟC CEB / I. Radiate, draped and cuirassed bust right. Rev: ΠΕΡΓΑΙΑC ΑΡΤΕΜΙΔΟC. Distyle temple with A in pediment and ΑCΥΛΟΥ on entablature, enclosing cult image of Artemis of Perge flanked by star and crescent. 15,37 g - 29,09 mm

**4**



**384** CARIA. Aphrodisias. Gallienus (253-268). Ae. Obv: AV ΚΑΙ ΠΟ ΛΙ ΓΑΛΛΙΗΝΟC. Radiate, draped and cuirassed bust left. Rev: ΑΦΡΟΔΙ / CΙΕΩΝ. Gallienus, preparing to hurl spear, on horse galloping left. 8,49 g - 25,34 mm

**4**



**385** Pontos. Amaseia. Julia Domna. Augusta AD 193-217. 13,28 g - 31,20 mm

**4**



**386** Pamphilia,Aspendos. Otacilia Severa (244-249) AE. diademed and draped bust of Otacilia Severa, right. Rev. shrine with double pediment enclosing cult statues of the Aphroditai Kastnietides. 8,12 g - 24,53 mm

**4**



**387** Roman Provincial Coin. Ae 6,23 g - 23,01 mm

**4**



**388** PHRYGIA. Hierapolis. Pseudo-autonomous issue Ae 15,26 g - 32,54 mm

**4**



**389** PHRYGIA. Hierapolis. Pseudo-autonomous issue Ae 15,26 g - 30,90 mm

**4**



**390** PHRYGIA. Hierapolis. Pseudo-autonomous issue Ae 7,83 g - 26,00 mm

**4**



**391** PHRYGIA. Hierapolis. Pseudo-autonomous issue Ae 9,88 g - 28,13 mm

**4**



**392** PHRYGIA. Hierapolis. Pseudo-autonomous issue Ae 11,27 g - 28,52 mm

**4**



**393** Roman Provincial Coin Ae 7,41 g - 24,94 mm

**4**



**394** Roman Provincial Coin Ae 11,04 g - 29,32 mm

**4**



**395** Roman Provincial Coin Ae 13,24 g - 24,46 mm

**4**



**396** Roman Provincial Coin Ae 3,89 g - 20,43 mm

**4**



**397** Roman Provincial Coin Ae 5,57 g - 20,75 mm

**4**



**398** Roman Provincial Coin Ae 11,15 g - 29,09 mm

**4**



**399** Roman Provincial Coin Ae 4,91 g - 21,91 mm

**4**



**400** TROAS. Alexandria. Salonina (Augusta, 254-268). Ae. Obv: AVR CORN SALONINA. Diademed and draped bust right. Rev: COL AVG / TROA. Horse grazing right. 3,70 g - 18,87 mm

**4**



**401** PHRYGIA. Hierapolis. Valerian I (253-260). Ae. 12,66 g - 30,19 mm

**4**



**402** PHRYGIA. Hierapolis. Valerian I (253-260). Ae. 12,02 g - 31,89 mm

**4**



**403** PHRYGIA. Hierapolis. Valerian I (253-260). Ae. 10,52 g - 32,08 mm

**4**



**404** PHRYGIA. Hierapolis. Valerian I (253-260). Ae. 12,64 g - 31,18 mm

**4**



**405** PHRYGIA. Hierapolis. Valerian I (253-260). Ae. 9,97 g - 31,86 mm

**4**



**406** PHRYGIA. Hierapolis. Valerian I (253-260). Ae. 12,35 g - 30,50 mm

**4**



**407** Valerian I (253-260). Ae 5,52 g - 24,88 mm Artificially patinated

**4**



**408** Valerian I (253-260) Ae 12,04 g - 29,99 mm

**4**



**409** Valerian I (253-260) Ae 18,26 g - 31,04 mm

**4**



**410** PAMPHYLIA. Side. Valerian I (253-260). Ae. 17,09 g - 31,85 mm

**4**



**411** PHRYGIA. Hierapolis. Valerian I (253-260). Ae 6,70 g - 25,48 mm

**4**



**412** PHRYGIA. Hierapolis. Valerian I (253-260). Ae 5,39 g - 25,99 mm

**4**



**413** PHRYGIA. Hierapolis. Valerian I (253-260). Ae 9,13 g - 26,72 mm

**4**





**414** PHRYGIA. Hierapolis. Valerian I (253-260). Ae 6,60 g - 27,42 mm

**4**



**415** PHRYGIA. Hierapolis. Valerian I (253-260). Ae 10,14 g - 25,15 mm

**4**



**416** PHRYGIA. Hierapolis. Valerian I (253-260). Ae 12,01 g - 31,80 mm

**4**



**417** PHRYGIA. Hierapolis. Valerian I (253-260). Ae 14,00 g - 31,56 mm

**4**



**418** PHRYGIA. Hierapolis. Valerian I (253-260). Ae 12,47 g - 32,70 mm

**4**



**419** PHRYGIA. Hierapolis. Valerian I (253-260). Ae 14,89 g - 30,92 mm

**4**



**420** PHRYGIA. Hierapolis. Valerian I (253-260). Ae 11,78 g - 31,70 mm

**4**



**421** PISIDIA. Antioch. Trajanus Decius (249-251). Ae. Obv: IMP CAES G MESS Q DECIO TR A. Laureate, draped and cuirassed bust right. Rev: ANTIOCH CE COL / 2 Я. Vexillum surmounted by eagle; signum to left and right; palm frond to inner right 5,81 g - 23,96 mm

**4**



**422** PISIDIA. Antioch. Trebonianus Gallus (251-253). Ae. Obv : IMP C V(I)MP GALVSSIANO AVG. 7,76 g - 24,57 mm

**4**



**423** TROAS. Alexandria. Pseudo-autonomous. Time of Trebonianus Gallus or Valerian I (251-260). Ae. Obv: COL TROA. Turreted and draped bust of Tyche right; vexillum to left. Rev: COL AVG / TRO. Horse grazing right. 6,41 g - 20,91 mm

**4**



**424** TROAS. Alexandria. Pseudo-autonomous. Time of Trebonianus Gallus or Valerian I (251-260). Ae. Obv: COL TROA. Turreted and draped bust of Tyche right; vexillum to left. Rev: COL AVG / TRO. Horse grazing right. 5,15 g - 20,70 mm

**4**



**425** TROAS. Alexandria. Pseudo-autonomous. Time of Trebonianus Gallus or Valerian I (251-260). Ae. Obv: COL TROA. Turreted and draped bust of Tyche right; vexillum to left. Rev: COL AVG / TRO. Horse grazing right. 6,39 g - 23,86 mm

**4**



**426** TROAS. Alexandria. Pseudo-autonomous. Time of Trebonianus Gallus or Valerian I (251-260). Ae. Obv: COL TROA. Turreted and draped bust of Tyche right; vexillum to left. Rev: COL AVG / TRO. Horse grazing right. 7,72 g - 22,15 mm

**4**



**427** TROAS. Alexandria. Pseudo-autonomous. Time of Trebonianus Gallus or Valerian I (251-260). Ae. Obv: COL TROA. Turreted and draped bust of Tyche right; vexillum to left. Rev: COL AVG / TRO. Horse grazing right. 6,15 g - 22,79 mm

**4**



**428** TROAS. Alexandria. Pseudo-autonomous. Time of Trebonianus Gallus or Valerian I (251-260). Ae. Obv: COL TROA. Turreted and draped bust of Tyche right; vexillum to left. Rev: COL AVG / TRO. Horse grazing right. 5,44 g - 20,80 mm

**4**



**429** TROAS. Alexandria. Pseudo-autonomous. Time of Trebonianus Gallus or Valerian I (251-260). Ae. Obv: COL TROA. Turreted and draped bust of Tyche right; vexillum to left. Rev: COL AVG / TRO. Horse grazing right. 4,46 g - 22,08 mm

**4**



**430** TROAS. Alexandria. Pseudo-autonomous. Time of Trebonianus Gallus or Valerian I (251-260). Ae. Obv: COL TROA. Turreted and draped bust of Tyche right; vexillum to left. Rev: COL AVG / TRO. Horse grazing right. 4,59 g - 20,45 mm

**4**



**431** TROAS. Alexandria. Pseudo-autonomous. Time of Trebonianus Gallus or Valerian I (251-260). Ae. Obv: COL TROA. Turreted and draped bust of Tyche right; vexillum to left. Rev: COL AVG / TRO. Horse grazing right. 6,90 g - 23,20 mm

**4**



**432** TROAS. Alexandria. Pseudo-autonomous. Time of Trebonianus Gallus or Valerian I (251-260). Ae. Obv: COL TROA. Turreted and draped bust of Tyche right; vexillum to left. Rev: COL AVG / TRO. Horse grazing right. 5,17 g - 21,50 mm

**4**



**433** TROAS. Alexandria. Pseudo-autonomous. Time of Trebonianus Gallus or Valerian I (251-260). Ae. Obv: COL TROA. Turreted and draped bust of Tyche right; vexillum to left. Rev: COL AVG / TRO. Horse grazing right. 4,57 g - 20,88 mm

**4**



**434** TROAS. Alexandria. Pseudo-autonomous. Time of Trebonianus Gallus or Valerian I (251-260). Ae. Obv: COL TROA. Turreted and draped bust of Tyche right; vexillum to left. Rev: COL AVG / TRO. Horse grazing right. 5,65 g - 20,02 mm

**4**



**435** TROAS. Alexandria. Pseudo-autonomous. Time of Trebonianus Gallus or Valerian I (251-260). Ae. Obv: COL TROA. Turreted and draped bust of Tyche right; vexillum to left. Rev: COL AVG / TRO. Horse grazing right. 5,14 g - 22,02 mm

**4**



**436** TROAS. Alexandria. Pseudo-autonomous. Time of Trebonianus Gallus or Valerian I (251-260). Ae. Obv: COL TROA. Turreted and draped bust of Tyche right; vexillum to left. Rev: COL AVG / TRO. Horse grazing right. 4,85 g - 19,83 mm

**4**



**437** TROAS. Alexandria. Pseudo-autonomous. Time of Trebonianus Gallus or Valerian I (251-260). Ae. Obv: COL TROA. Turreted and draped bust of Tyche right; vexillum to left. Rev: COL AVG / TRO. Horse grazing right. 4,85 g - 20,76 mm

**4**



**438** TROAS. Alexandria. Pseudo-autonomous. Time of Trebonianus Gallus or Valerian I (251-260). Ae. Obv: COL TROA. Turreted and draped bust of Tyche right; vexillum to left. Rev: COL AVG / TRO. Horse grazing right. 4,96 g - 19,36 mm

**4**



**439** TROAS. Alexandria. Pseudo-autonomous. Time of Trebonianus Gallus or Valerian I (251-260). Ae. Obv: COL TROA. Turreted and draped bust of Tyche right; vexillum to left. Rev: COL AVG / TRO. Horse grazing right. 6,42 g - 22,75 mm

4



**440** TROAS. Alexandria. Pseudo-autonomous. Time of Trebonianus Gallus or Valerian I (251-260). Ae. Obv: COL TROA. Turreted and draped bust of Tyche right; vexillum to left. Rev: COL AVG / TRO. Horse grazing right. 4,05 g - 23,38 mm

4



**441** TROAS. Alexandria. Pseudo-autonomous AE (21,7 mm, 5,5 g) Turreted and draped bust of Tyche right; / Herakles Farnese standing right, right hand behind his back, leaning left arm on club covered with lionskin, resting on a rock 5,83 g - 22,90 mm

4



**442** TROAS. Alexandria. Pseudo-autonomous. Time of Gallienus (260-268). As. Obv: CO ALE AVG. Turreted and draped bust of Tyche right; vexillum to left. Rev: COL AVG TROAD. Statue of Apollo Smintheus right, with bow and patera. tripod to right.. 5,22 g - 21,73 mm

4



**443** TROAS. Alexandria. Pseudo-autonomous. Time of Gallienus (260-268). Ae As. Obv: COL TROAD. Turreted and draped bust of Tyche right; vexillum to left. Rev: COL AVGO TRO. Eagle flying right, holding bull's head in talons 4,60 g - 20,41 mm

4



**444** TROAS. Alexandria. Pseudo-autonomous. Time of Gallienus (260-268). Ae As. Obv: COL TROAD. Turreted and draped bust of Tyche right; vexillum to left. Rev: COL AVGO TRO. Eagle flying right, holding bull's head in talons 3,86 g - 21,83 mm

4



**445** Troas, Alexandria. Pseudo-autonomous. AE. 3.71 g. 21.93 mm. Obv: ALEX TRO. Draped bust of Tyche, right; behind her, vexillum inscribed AV CO. Rev: COL AVGO TROA. Fortuna standing left, holding cult statue of Apollo Smintheus and standard inscribed 6,40 g - 22,24 mm

4



**446** TROAS. Alexandria. Pseudo-autonomous. Time of Gallienus (253-268). As. Obv: COL TROAD. Turreted and draped bust of Tyche right; vexillum to left. Rev: COL AVG / TRO. She-wolf standing right, head left, suckling the twins Romulus and Remus. 6,75 g - 21,80 mm

4



**447** TROAS. Alexandria. Pseudo-autonomous. Time of Gallienus (253-268). As. Obv: COL TROAD. Turreted and draped bust of Tyche right; vexillum to left. Rev: COL AVG / TRO. She-wolf standing right, head left, suckling the twins Romulus and Remus. 4,62 g - 21,97 mm

4



**448** TROAS. Alexandria. Pseudo-autonomous. Time of Gallienus (253-268). As. Obv: COL TROAD. Turreted and draped bust of Tyche right; vexillum to left. Rev: COL AVG / TRO. She-wolf standing right, head left, suckling the twins Romulus and Remus. 5,07 g - 21,30 mm

4



**449** TROAS. Alexandria. Pseudo-autonomous. Time of Gallienus (253-268). As. Obv: COL TROAD. Turreted and draped bust of Tyche right; vexillum to left. Rev: COL AVG / TRO. She-wolf standing right, head left, suckling the twins Romulus and Remus. 5,04 g - 21,10 mm

4



**450** TROAS. Alexandria. Pseudo-autonomous. Time of Gallienus (253-268). As. Obv: COL TROAD. Turreted and draped bust of Tyche right; vexillum to left. Rev: COL AVG / TRO. She-wolf standing right, head left, suckling the twins Romulus and Remus. 5,04 g - 20,50 mm

**4**



**451** PHRYGIA. Hierapolis. Pseudo-autonomous. Ae 5,50 g - 24,80 mm

**4**



**452** PHRYGIA. Hierapolis. Pseudo-autonomous. Ae 5,81 g - 23,05 mm

**4**



**453** PHRYGIA. Hierapolis. Pseudo-autonomous. Ae 5,74 g - 24,19 mm

**4**



**454** PHRYGIA. Hierapolis. Pseudo-autonomous. Ae 5,50 g - 23,86 mm

**4**



**455** PHRYGIA. Hierapolis. Pseudo-autonomous. Ae 6,78 g - 24,52 mm

**4**



**456** PHRYGIA. Hierapolis. Pseudo-autonomous. Ae 6,78 g - 24,90 mm

**4**



**457** PHRYGIA. Hierapolis. Pseudo-autonomous. Ae 5,20 g - 24,04 mm

**4**



**458** PHRYGIA. Hierapolis. Pseudo-autonomous. Ae 6,28 g - 23,25 mm

**4**



**459** PHRYGIA. Hierapolis. Pseudo-autonomous. Ae 6,67 g - 24,40 mm

**4**



**460** PHRYGIA. Hierapolis. Pseudo-autonomous. Ae 5,89 g - 23,24 mm

**4**



**461** PHRYGIA. Hierapolis. Pseudo-autonomous. Ae 6,13 g - 24,10 mm

**4**



**462** PHRYGIA. Hierapolis. Pseudo-autonomous. Ae 5,34 g - 23,00 mm

**4**



**463** PHRYGIA. Hierapolis. Pseudo-autonomous. Ae 5,93 g - 22,86 mm

**4**





**464** PHRYGIA. Hierapolis. Pseudo-autonomous. Ae 6,59 g - 23,64 mm

**4**



**465** PHRYGIA. Hierapolis. Pseudo-autonomous. Ae 8,58 g - 26,51 mm

**4**



**466** PHRYGIA. Hierapolis. Pseudo-autonomous. Ae 8,57 g - 26,09 mm

**4**



**467** PHRYGIA. Hierapolis. Pseudo-autonomous. Ae 7,34 g - 25,43 mm

**4**



**468** PHRYGIA. Hierapolis. Pseudo-autonomous. Ae 6,54 g - 24,90 mm

**4**



**469** PHRYGIA. Hierapolis. Pseudo-autonomous. Ae 6,02 g - 23,18 mm

**4**



**470** PHRYGIA. Hierapolis. Pseudo-autonomous. Ae 6,18 g - 23,90 mm

**4**



**471** PHRYGIA. Hierapolis. Pseudo-autonomous. Ae 6,88 g - 23,56 mm

**4**



**472** PHRYGIA. Hierapolis. Pseudo-autonomous. Ae 5,25 g - 23,35 mm

**4**



**473** PHRYGIA. Hierapolis. Pseudo-autonomous. Ae 5,41 g - 22,73 mm

**4**



**474** PHRYGIA. Hierapolis. Pseudo-autonomous. Ae 5,43 g - 23,67 mm

**4**



**475** PHRYGIA. Hierapolis. Pseudo-autonomous. Ae 7,17 g - 23,34 mm

**4**



**476** PHRYGIA. Hierapolis. Pseudo-autonomous. Ae 5,60 g - 22,60 mm

**4**



**477** PHRYGIA. Hierapolis. Pseudo-autonomous. Ae 6,15 g - 23,39 mm

**4**



**478** PHRYGIA. Hierapolis. Pseudo-autonomous. Ae 6,67 g - 23,78 mm

**4**



**479** PHRYGIA. Hierapolis. Pseudo-autonomous. Ae 8,99 g - 25,60 mm

**4**



**480** PHRYGIA. Hierapolis. Pseudo-autonomous. Ae 6,23 g - 23,50 mm

**4**



**481** PHRYGIA. Hierapolis. Pseudo-autonomous. Ae 6,23 g - 24,18 mm

**4**



**482** PHRYGIA. Hierapolis. Pseudo-autonomous. Ae 5,68 g - 23,39 mm

**4**



**483** PHRYGIA. Hierapolis. Pseudo-autonomous. Ae 6,54 g - 24,11 mm

**4**



**484** PHRYGIA. Hierapolis. Pseudo-autonomous. Ae 5,73 g - 22,01 mm

**4**



**485** PHRYGIA. Hierapolis. Pseudo-autonomous. Ae 5,20 g - 24,30 mm

**4**



**486** PHRYGIA. Hierapolis. Pseudo-autonomous. Ae 6,15 g - 23,82 mm

**4**



**487** PHRYGIA. Hierapolis. Pseudo-autonomous. Ae 6,83 g - 24,00 mm

**4**



**488** PHRYGIA. Hierapolis. Pseudo-autonomous. Ae 5,51 g - 24,50 mm

**4**



**489** PHRYGIA. Hierapolis. Pseudo-autonomous. Ae 7,61 g - 24,78 mm

**4**



**490** PHRYGIA. Hierapolis. Pseudo-autonomous. Ae 5,48 g - 23,44 mm

**4**



**491** PHRYGIA. Hierapolis. Pseudo-autonomous. Ae 4,64 g - 24,12 mm

**4**



**492** PAMPHYLIA. Side. Gallienus (253-268). Ae 10 Assaria. Obv: AVT KAI ΠΟΥ ΛΙ ΕΓΝ ΓΑΛΛΙΗΝΟC CΕΒΑ. Radiate, draped and cuirassed bust right; I (mark of value) to right. Rev: CΙΔΗΤΩΝ ΝΕΩΚΟΡΩΝ / ΝΑΥΑΡΧΙC. Galley sailing left. 17,21 g - 31,04 mm

**4**



**493** PAMPHYLIA. Perge. Gallienus (253-268). Ae 10 Assaria. Obv: ΑΥΤ ΚΑΙ ΠΟ ΛΙ ΓΑΛΛΙΗΝΟC CΕΒ / Ι. Radiate, draped and cuirassed bust right. Rev: ΠΕΡΓΑΙΑC ΑΡΤΕΜΙΔΟC. Distyle temple with A in pediment and ΑCΥΛΟΥ on entablature, enclosing cult image of Artemis of Perge flanked by star and crescent. 16,59 g - 30,01 mm

**4**



**494** CILICIA. Seleucia ad Calycadnum. Gallienus (254-268). Ae. Obv: ΑΥ Κ Π ΛΚ ΓΑΛΛΙΗΝΟC. Laureate, draped and cuirassed bust right. Rev: CΕΛΕΥΚΕΩΝ ΚΑΛΥΚΑΔ. The Gigantomachy (the battle between the Giants and the Olympic Gods): Athena standing right, holding shield and preparing to spear anguiform giant (Porphyrion) crouching left. 8,51 g - 29,15 mm

**4**



**495** TROAS. Alexandria. Gallienus (253-268). Ae. Obv: IMP LICIN GALLIEN. Laureate, draped and cuirassed bust right. Rev: COL AVG / ΤΡΟ. Horse grazing right. 7,21 g - 23,70 mm

**4**



**496** TROAS. Alexandria. Gallienus (253-268). Ae. Obv: IMP LICIN GALLIEN. Laureate, draped and cuirassed bust right. Rev: COL AVG / ΤΡΟ. Horse grazing right. 4,33 g - 18,68 mm

**4**



**497** TROAS. Alexandria. Gallienus (253-268). Ae. Obv: IMP LICIN GALLIEN. Laureate, draped and cuirassed bust right. Rev: COL AVG / ΤΡΟ. Horse grazing right. 5,44 g - 21,05 mm

**4**



**498** TROAS. Alexandria. Gallienus (253-268). Ae. Obv: IMP LICIN GALLIEN. Laureate, draped and cuirassed bust right. Rev: COL AVG / TRO. Horse grazing right. 4,70 g - 19,02 mm

**4**



**499** TROAS. Alexandria. Gallienus (253-268). Ae. Obv: IMP LICIN GALLIEN. Laureate, draped and cuirassed bust right. Rev: COL AVG / TROA. She-wolf standing right, suckling Romulus and Remus. 5,44 g - 20,60 mm

**4**



**500** TROAS. Alexandria. Gallienus (253-268). Ae. Obv: IMP LICIN GALLIEN. Laureate, draped and cuirassed bust right. Rev: COL AVG / TRO. Horse grazing right. 5,02 g - 20,46 mm

**4**



**501** TROAS. Alexandria. Gallienus (253-268). Ae. Obv: IMP LICIN GALLIEN. Laureate, draped and cuirassed bust right. Rev: COL AVG / TRO. Horse grazing right. 4,15 g - 20,06 mm

**4**



**502** TROAS. Alexandria. Gallienus (253-268). Ae. Obv: IMP LICIN GALLIEN. Laureate, draped and cuirassed bust right. Rev: COL AVG / TRO. Horse grazing right. 4,40 g - 23,50 mm

**4**



**503** TROAS. Alexandria. Gallienus (253-268). Ae. Obv: IMP LICIN GALLIEN. Laureate, draped and cuirassed bust right. Rev: COL AVG / TRO. Horse grazing right. 4,40 g - 18,98 mm

**4**



**504** TROAS. Alexandria. Gallienus (253-268). Ae. Obv: IMP LICIN GALLIEN. Laureate, draped and cuirassed bust right. Rev: COL AVG / TROA. She-wolf standing right, suckling Romulus and Remus. 4,51 g - 20,90 mm

**4**



**505** TROAS. Alexandria. Gallienus (253-268). Ae. Obv: IMP LICIN GALLIEN. Laureate, draped and cuirassed bust right. Rev: COL AVG / TRO. Horse grazing right. 4,67 g - 19,95 mm

**4**



**506** TROAS. Alexandria. Gallienus (253-268). Ae As. Obv: IMP LICIN GALLIENV. Laureate, draped and cuirassed bust right. Rev: COL AVGO TRO. Eagle right on head and neck of bull right. 5,19 g - 20,78 mm

**4**



**507** TROAS. Alexandria. Gallienus (253-268). Ae. Obv: IMP LICIN GALLIEN. Laureate, draped and cuirassed bust right. Rev: COL AVG / TRO. Horse grazing right. 5,44 g - 21,15 mm

**4**



**508** TROAS. Alexandria. Gallienus (253-268). Ae. Obv: IMP LICIN GALLIEN. Laureate, draped and cuirassed bust right. Rev: COL AVG / TRO. Horse grazing right. 3,55 g - 19,12 mm

**4**



**509** TROAS. Alexandria. Gallienus (253-268). Ae. Obv: IMP LICIN GALLIEN. Laureate, draped and cuirassed bust right. Rev: COL AVG / TROA. She-wolf standing right, suckling Romulus and Remus. 5,60 g - 21,47 mm

**4**



**510** TROAS. Alexandria. Gallienus (253-268). Ae. Obv: IMP LICIN GALLIEN. Laureate, draped and cuirassed bust right. Rev: COL AVG / TROA. She-wolf standing right, suckling Romulus and Remus. 4,89 g - 20,84 mm

**4**



**511** TROAS. Alexandria. Gallienus (253-268). Ae As. Obv: IMP LICIN GALLIENV. Laureate, draped and cuirassed bust right. Rev: COL AVGO TRO. Eagle right on head and neck of bull right. 4,36 g - 19,20 mm

**4**



**512** MYSIA, Parium. Philip II. AD 247-249. Æ PHIL[...], laureate, draped, and cuirassed bust right / C G I H P A R, she-wolf right, head left, suckling the twins Romulus and Remus below. 6,34 g - 22,62 mm

**4**



**513** TROAS. Alexandria. Valerian (253-260). Ae. Obv: IMP LICINI VALERIANVS. Laureate, draped and cuirassed bust right. Rev: COL AVG TRO. She-wolf standing right, suckling Romulus and Remus. 4,86 g - 21,61 mm

**4**



**514** TROAS. Alexandria. Valerian (253-260). Ae. Obv: IMP LICINI VALERIANVS. Laureate, draped and cuirassed bust right. Rev: COL AVG TRO. She-wolf standing right, suckling Romulus and Remus. 5,08 g - 19,68 mm

**4**



**515** TROAS. Alexandria. Valerian (253-260). Ae. Obv: IMP LICINI VALERIANVS. Laureate, draped and cuirassed bust right. Rev: COL AVG TRO. She-wolf standing right, suckling Romulus and Remus. 5,45 g - 20,73 mm

**4**



**516** TROAS. Alexandria. Valerian (253-260). Ae. Obv: IMP LICINI VALERIANVS. Laureate, draped and cuirassed bust right. Rev: COL AVG TRO. She-wolf standing right, suckling Romulus and Remus. 5,26 g - 20,77 mm

**4**



**517** TROAS. Alexandria. Valerian (253-260). Ae. Obv: IMP LICINI VALERIANVS. Laureate, draped and cuirassed bust right. Rev: COL AVG TRO. She-wolf standing right, suckling Romulus and Remus. 4,53 g - 20,48 mm

**4**





**518** TROAS. Alexandria. Valerian (253-260). Ae. Obv: IMP LICINI VALERIANVS. Laureate, draped and cuirassed bust right. Rev: COL AVG TRO. She-wolf standing right, suckling Romulus and Remus. 5,59 g - 20,99 mm

**4**



**519** TROAS. Alexandria. Valerian I (253-260). Ae As. Obv: IMP LIC VALERIANVS AVG. Laureate, draped and cuirassed bust right. Rev: COL AVG TROA. Eagle, with head left and wings spread, standing facing on head and neck of bull left 5,02 g - 21,03 mm

**4**



**520** TROAS. Alexandria. Valerian I (253-260). Ae As. Obv: IMP LIC VALERIANVS AVG. Laureate, draped and cuirassed bust right. Rev: COL AVG TROA. Eagle, with head left and wings spread, standing facing on head and neck of bull left 5,03 g - 19,80 mm

**4**



**521** TROAS. Alexandria. Valerian (253-260). Ae. Obv: IMP LICINI VALERIANVS. Laureate, draped and cuirassed bust right. Rev: COL AVG TRO. She-wolf standing right, suckling Romulus and Remus. 3,27 g - 22,48 mm

**4**



**522** Roman Provincial Coin. Ae 14,63 g - 27,28 mm

**4**



**523** TROAS. Alexandria. Maximus (Caesar, 236-238). Obv: G IVL VE MAXIMVS C. Draped and cuirassed bust right. Rev: COL AVG / TROA. Horse grazing right. Condition: Very fine 6,74 g - 23,07 mm

**4**



**524** TROAS. Alexandria. Maximus (Caesar, 236-238). Obv: G IVL VE MAXIMVS C. Draped and cuirassed bust right. Rev: COL AVG / TROA. Horse grazing right. Condition: Very fine 8,82 g - 25,42 mm

**4**



**525** Roman Provincial Coin.Ae 7,75 g - 23,59 mm

**4**



**526** Roman Provincial Coin.Ae 4,93 g - 21,30 mm

**4**



**527** Roman Provincial Coin.Ae 4,45 g - 23,25 mm

**4**



**528** Roman Provincial Coin.Ae 5,03 g - 22,40 mm

**4**



**529** Roman Provincial Coin.Ae 5,99 g - 23,16 mm

**4**



**530** Roman Provincial Coin.Ae 1,87 g - 16,30 mm

**4**



**531** PHRYGIA. Hierapolis. Pseudo-autonomous. Ae 3,56 g - 21,25 mm

**4**



**532** CILICIA. Tarsus. Caracalla (198-217 AD). Ae. Obv: Laureate bust left. Rev: Sandan of Tarsus standing atop horned lion right, holding wreath. SNG Levante 1054. Rare. 17,77 g - 33,39 mm

**4**



**533** PHRYGIA. Hierapolis. Pseudo-autonomous. Ae 5,99 g - 25,17 mm

**4**



**534** PHRYGIA. Hierapolis. Pseudo-autonomous. Ae 6,36 g - 25,90 mm

**4**



**535** PHRYGIA. Hierapolis. Pseudo-autonomous. Ae 6,01 g - 24,36 mm

**4**



**536** PHRYGIA. Hierapolis. Pseudo-autonomous. Ae 5,30 g - 23,65 mm

**4**



**537** PHRYGIA. Hierapolis. Pseudo-autonomous. Ae 8,41 g - 24,96 mm

**4**



**538** PHRYGIA. Hierapolis. Pseudo-autonomous. Ae 5,98 g - 23,28 mm

**4**



**539** PHRYGIA. Hierapolis. Pseudo-autonomous. Ae 5,80 g - 24,19 mm

**4**



**540** PHRYGIA. Hierapolis. Pseudo-autonomous. Ae 5,98 g - 23,26 mm

**4**



**541** PHRYGIA. Hierapolis. Pseudo-autonomous. Ae 7,19 g - 23,70 mm

**4**



**542** PHRYGIA. Hierapolis. Pseudo-autonomous. Ae 6,12 g - 22,90 mm

**4**



**543** PHRYGIA. Hierapolis. Pseudo-autonomous. Ae 5,93 g - 23,00 mm

**4**



**544** PHRYGIA. Hierapolis. Pseudo-autonomous. Ae 5,75 g - 23,80 mm

**4**



**545** PHRYGIA. Hierapolis. Pseudo-autonomous. Ae 5,42 g - 23,91 mm

**4**



**546** PHRYGIA. Hierapolis. Pseudo-autonomous. Ae 5,75 g - 23,56 mm

**4**



**547** PHRYGIA. Hierapolis. Pseudo-autonomous. Ae 4,13 g - 22,08 mm

**4**



**548** PHRYGIA. Hierapolis. Pseudo-autonomous. Ae 6,30 g - 23,23 mm

**4**



**549** PHRYGIA. Hierapolis. Pseudo-autonomous. Ae 6,91 g - 24,60 mm

**4**



**550** PHRYGIA. Hierapolis. Pseudo-autonomous. Ae 5,62 g - 24,72 mm

**4**



**551** PHRYGIA. Hierapolis. Pseudo-autonomous. Ae 6,10 g - 23,67 mm

**4**



**552** PHRYGIA. Hierapolis. Pseudo-autonomous. Ae 4,98 g - 22,53 mm

**4**



**553** PHRYGIA. Hierapolis. Pseudo-autonomous. Ae 5,35 g - 23,34 mm

**4**



**554** PHRYGIA. Hierapolis. Pseudo-autonomous. Ae 6,63 g - 24,19 mm

**4**



**555** PHRYGIA. Hierapolis. Pseudo-autonomous. Ae 5,23 g - 23,22 mm

**4**



**556** PHRYGIA. Hierapolis. Pseudo-autonomous. Ae 4,40 g - 24,45 mm

**4**



**557** PHRYGIA. Hierapolis. Pseudo-autonomous. Ae 6,19 g - 23,91 mm

**4**



**558** PHRYGIA. Hierapolis. Pseudo-autonomous. Ae 5,23 g - 24,32 mm

**4**



**559** PHRYGIA. Hierapolis. Pseudo-autonomous. Ae 5,38 g - 24,32 mm

**4**



**560** PHRYGIA. Hierapolis. Pseudo-autonomous. Ae 6,98 g - 24,08 mm

**4**



**561** PHRYGIA. Hierapolis. Pseudo-autonomous. Ae 6,41 g - 23,74 mm

**4**



**562** PHRYGIA. Hierapolis. Pseudo-autonomous. Ae 6,00 g - 24,05 mm

**4**



**563** PHRYGIA. Hierapolis. Pseudo-autonomous. Ae 7,98 g - 25,42 mm

**4**



**564** PHRYGIA. Hierapolis. Pseudo-autonomous. Ae 7,44 g - 23,80 mm

**4**



**565** PHRYGIA. Hierapolis. Pseudo-autonomous. Ae 5,73 g - 24,14 mm

**4**



**566** PHRYGIA. Hierapolis. Pseudo-autonomous. Ae 5,53 g - 25,05 mm

**4**



**567** PHRYGIA. Hierapolis. Pseudo-autonomous. Ae 5,71 g - 23,86 mm

**4**



**568** PHRYGIA. Hierapolis. Pseudo-autonomous. Ae 5,84 g - 23,80 mm

**4**



**569** PHRYGIA. Hierapolis. Pseudo-autonomous. Ae 6,04 g - 23,84 mm

**4**



**570** PHRYGIA. Hierapolis. Pseudo-autonomous. Ae 5,44 g - 24,43 mm

**4**



**571** PHRYGIA. Hierapolis. Pseudo-autonomous. Ae 5,44 g - 23,26 mm

**4**



**572** PHRYGIA. Hierapolis. Pseudo-autonomous. Ae 3,89 g - 22,74 mm

**4**



**573** PHRYGIA. Hierapolis. Pseudo-autonomous. Ae 3,95 g - 20,27 mm

**4**





**574** PHRYGIA. Hierapolis. Pseudo-autonomous. Ae 4,74 g - 23,89 mm

**4**



**575** PHRYGIA. Hierapolis. Pseudo-autonomous. Ae 4,99 g - 21,74 mm

**4**



**576** FAUSTUS CORNELIUS SULLA. Denarius (56 BC). Rome. Obv: S C. Laureate, diademed and draped bust of Venus right, with sceptre over shoulder. Rev: Three military trophies; capis to left, lituus to right; monogram in exergue. 3,20 g - 20,16 mm

**4**



**577** SELEUCIS & PIERIA. Antioch. Augustus (27 BC-14 AD). Ae. Dated RY 27 (5/4 BC). Obv: AVGVST TR POT. Laureate head right. Rev: SC within wreath. 9,14 g - 24,75 mm

**4**



**578** ASIA MINOR. Uncertain. Augustus (27 BC-14 AD). Ae. Obv: CAESAR. Bare head right. Rev: AVGVSTVS. Legend in one line within laurel wreath 11,36 g - 26,99 mm

**4**



**579** AUGUSTUS (27 BC-14 AD). Denarius. Lugdunum. Obv: CAESAR AVGVSTVS DIVI F PATER PATRIAE. Laureate head right. Rev: C L CAESARES AVGVSTI F COS DESIG PRINC IVVENT. Gaius and Lucius Caesar standing facing; two shields and two sceptres between; above, simpulum and lituus. 3,44 g - 20,45 mm

**4**



**580** AUGUSTUS (27 BC-14 AD). Denarius. Lugdunum. Obv: CAESAR AVGVSTVS DIVI F PATER PATRIAE. Laureate head right. Rev: C L CAESARES AVGVSTI F COS DESIG PRINC IVVENT. Gaius and Lucius Caesar standing facing; two shields and two sceptres between; above, simpulum and lituus. 3,49 g - 16,61 mm

4



**581** TIBERIUS (14-37). Denarius. "Tribute Penny" type. Lugdunum. Obv: TI CAESAR DIVI AVG F AVGVSTVS. Laureate head right. Rev: PONTIF MAXIM. Livia (as Pax) seated right on throne, holding sceptre and olive branch. 3,55 g - 18,10 mm

4



**582** TITUS (Caesar, 69-79). Denarius. Rome. Obv: T CAESAR IMP VESPASIANVS. Laureate head right. Rev: COS VI. Yoke of oxen left. 2,81 g - 16,57 mm

4



**583** TITUS (79-81). Denarius. Rome. Obv: IMP TITVS CAES VESPASIAN AVG P M. Laureate head right. Rev: TR P IX IMP XV COS VIII P P. Elephant advancing left. 2,62 g - 18,02 mm

4



**584** VESPASIAN (69-79). Denarius. Rome. Obv: IMP CAESAR VESP AVG. Laureate head right. Rev: PONTIF MAXIM. Winged caduceus. 2,89 g - 18,77 mm

4



**585** TRAJAN (98-117). Denarius. Rome. Obv: IMP CAES NER TRAIAN OPTIM AVG GERM DAC. Laureate and draped bust right. Rev: PARTHICO P M TR P COS VI P P S P Q R. Felicitas standing left, holding cornucopia and caduceus. 3,21 g - 17,97 mm

4



**586** TRAJAN (98-117). Denarius. Rome. Obv: IMP CAES NER TRAIANO OPTIMO AVG GER DAC. Laureate and draped bust right. Rev: P M TR P COS VI P P S P Q R. Trajan's column surmounted by statue of Trajan, with patera and sceptre; two eagles at base. 2,87 g - 19,28 mm

**4**



**587** Trajan. A.D. 98-117. AE Sestertius Rome A.D. 112-114. Laureate bust of Trajan right, wearing aegis Rev. DACIA AV-GVST around, PROVINCIA/S C in two lines in exergue, Dacia seated left atop pile of rocks, holding standard; at her side, two children seated, one holding grain ears, the other holding grapes. 23,02 g - 32,50 mm

**4**



**588** HADRIAN (117-138). Denarius. AR Rome. 2,84 g - 17,90 mm

**4**



**589** HADRIAN (117-138). Denarius. AR Rome. 2,27 g - 17,96 mm

**4**



**590** HADRIAN (117-138). Denarius. AR Rome. 2,82 g - 18,32 mm

**4**



**591** HADRIAN (117-138). Denarius. AR Rome. 2,81 g - 19,24 mm

**4**



**592** HADRIAN (117-138). Denarius. AR Rome. 2,61 g - 19,05 mm **4**



**593** HADRIAN (117-138). Denarius. (PLATED) Rome. 2,51 g - 19,20 mm **4**



**594** HADRIAN (117-138). Semis. Rome. Obv: HADRIANVS AVGVSTVS P P. Laureate head right. Rev: COS III / S - C. Legionary eagle between two standards. 2,84 g - 17,97 mm **4**



**595** HADRIAN (117-138). Semis. Rome. Obv: HADRIANVS AVGVSTVS P P. Laureate head right. Rev: COS III / S - C. Legionary eagle between two standards. 2,61 g - 16,69 mm **4**



**596** HADRIAN (117-138). Semis. Rome. Obv: IMP CAESAR TRAIAN HADRIANVS AVG. Eagle standing left, head right, with wings spread. Rev: P M TR P COS III / S C. Winged thunderbolt. 3,25 g - 19,52 mm **4**



**597** HADRIAN (117-138). Semis. Rome. Obv: IMP CAESAR TRAIAN HADRIANVS AVG. Eagle standing left, head right, with wings spread. Rev: P M TR P COS III / S C. Winged thunderbolt. 1,88 g - 17,85 mm **4**



**598** SABINA (Augusta, 128-136/7). Denarius. Rome. Obv: SABINA AVGVSTA. Draped bust right. Rev: VENERI GENETRICI. Venus standing right, drawing fold of drapery from shoulder and holding apple. 2,99 g - 17,52 mm **4**



**599** ANTONINUS PIUS (138-161). Denarius. Rome. 2,52 g - 18,15 mm

**4**



**600** ANTONINUS PIUS (138-161). Denarius. Rome. 2,52 g - 17,60 mm

**4**



**601** ANTONINUS PIUS (138-161). Sestertius. Rome. 20,90 g - 34,16 mm

**4**



**602** ANTONINUS PIUS (138-161). Sestertius. Rome. 23,38 g - 32,39 mm

**4**



**603** ANTONINUS PIUS (138-161). Sestertius. Rome. 21,20 g - 30,36 mm

**4**



**604** ANTONINUS PIUS (138-161). Sestertius. Rome. 23,39 g - 34,50 mm

**4**



**605** DIVA FAUSTINA I (Died 140/1). Denarius. Rome. Struck under Antoninus Pius. Obv: DIVA FAVSTINA. Draped bust right. Rev: AETERNITAS. Aeternitas (or Providentia) standing left, holding globus and billowing veil. 3,18 g - 17,30 mm

**4**



**606** PISIDIA.Antioch.Antoninus Pius.(138-161).Ae. Obv : ANTONINVS AVG PIVS PP TR P COS IIII. Laureate head right. Rev : GENIO COLONIAE ANTIOCH. Genius standing, facing, head, l., emptying cornucopia over altar, holding long sceptre Condition :Very Fine 7,94 g - 25,67 mm

**4**



**607** Pamphylia, Magydos. Lucius Verus, 161-169 AD. AE. Laureate, draped and cuirassed bust right. Zeus enthroned to right holding scepter. Very rare.fine 26,82 g - 33,87 mm

**4**



**608** GETA (209-211). Sestertius. Rome. 22,24 g - 32,40 mm

**4**



**609** COMMODUS (177-192). Denarius. AR. Rome 2,59 g - 16,29 mm

**4**



**610** MARCUS AURELIUS(139-161). Denarius. Rome 2,48 g - 18,22 mm

**4**



**611** SEPTIMIUS SEVERUS (193-211). Denarius.AR. Rome. 2,63 g - 17,00 mm

**4**



**612** SEPTIMIUS SEVERUS (193-211). Denarius.AR. Rome. 2,52 g - 19,50 mm

**4**



**613** SEPTIMIUS SEVERUS (193-211). Denarius.AR. Rome. 3,02 g  
- 19,16 mm

**4**



**614** SEPTIMIUS SEVERUS (193-211). Denarius.AR. Rome. 3,81 g  
- 19,58 mm

**4**



**615** SEPTIMIUS SEVERUS (193-211). Denarius.AR. Rome. 2,96 g  
- 17,40 mm

**4**



**616** JULIA DOMNA (Augusta, 193-217). Denarius.AR Rome 3,05  
g - 19,79 mm

**4**



**617** JULIA DOMNA (Augusta, 193-217). Denarius.AR. Rome 2,18  
g - 19,20 mm

**4**



**618** CARACALLA (198-217). Antoninianus.AR Rome. 4,50 g -  
23,60 mm

**4**



**619** CARACALLA (198-217). Antoninianus.AR Rome. 4,71 g -  
22,17 mm

**4**



**620** CARACALLA (198-217). Denarius.AR Rome. 3,01 g - 18,40 mm

**4**



**621** CARACALLA (198-217). Denarius.AR Rome. 2,91 g - 20,00 mm

**4**



**622** CARACALLA (198-217). Denarius.AR Rome. 2,14 g - 19,79 mm

**4**



**623** CARACALLA (198-217). Denarius.AR Rome. 2,31 g - 18,27 mm

**4**



**624** CARACALLA (198-217). Denarius.AR Rome. 2,77 g - 19,41 mm

**4**



**625** CARACALLA (198-217). Denarius.AR Rome. 2,87 g - 18,07 mm

**4**



**626** GETA (209-211). Denarius.AR Rome. 2,93 g - 20,27 mm

**4**





**627** SEVERUS ALEXANDER (222-235). Denarius. Rome 2,79 g - 17,92 mm

**4**



**628** SEVERUS ALEXANDER (222-235). Sestertius. Rome. 17,38 g - 28,13 mm

**4**



**629** FAUSTINA II (Augusta, 147-175). Denarius. Rome. 2,30 g - 18,30 mm

**4**



**630** ORBIANA (Augusta, 225-227). Denarius. Rome. Obv: SALL BARBIA ORBIANA AVG. Draped bust right, wearing stephane. Rev: CONCORDIA AVGG. Concordia seated left on throne, holding patera and double cornucopia 2,35 g - 18,17 mm

**4**



**631** JULIA SOEMIAS (Augusta, 218-222). Denarius. Rome. Obv: IVLIA SOAEMIAS AVG. Draped bust right. Rev: VENVS CAELESTIS. Venus standing facing, head left, holding apple and sceptre; star in right field. 2,41 g - 18,19 mm

**4**



**632** Roman Imperial Coin. 2,54 g - 18,02 mm

**4**



**633** MAXIMINUS THRAX (235-238). Denarius. Rome. 2,03 g - 19,36 mm

**4**



**634** MAXIMINUS THRAX (235-238). Denarius. Rome. 2,20 g - 20,07 mm

**4**



**635** MAXIMINUS THRAX (235-238). Denarius. Rome. 2,66 g - 19,15 mm

**4**



**636** GORDIAN III (238-244). Antoninianus. Rome. 4,62 g - 21,30 mm

**4**



**637** GORDIAN III (238-244). Antoninianus. Rome. 4,44 g - 24,20 mm

**4**



**638** GORDIAN III (238-244). Antoninianus. Rome. 3,78 g - 22,65 mm

**4**



**639** GORDIAN III (238-244). Antoninianus. Rome. 4,73 g - 23,04 mm

**4**



**640** GORDIAN III (238-244). Antoninianus. Rome. 4,52 g - 21,70 mm

**4**



**641** GORDIAN III (238-244). Antoninianus. Rome. 4,39 g - 23,75 mm

**4**



**642** GORDIAN III (238-244). Antoninianus. Rome. 3,77 g - 23,10 mm

**4**



**643** GORDIAN III (238-244). Antoninianus. Rome. 4,21 g - 22,18 mm

**4**



**644** GORDIAN III (238-244). Antoninianus. Rome. 4,30 g - 21,87 mm

**4**



**645** GORDIAN III (238-244). Antoninianus. Rome. 3,77 g - 21,34 mm

**4**



**646** GORDIAN III (238-244). Antoninianus. Rome. 3,10 g - 20,81 mm

**4**



**647** GORDIAN III (238-244). Antoninianus. Rome. 3,52 g - 21,76 mm

**4**



**648** GORDIAN III (238-244). Antoninianus. Rome. 2,84 g - 23,24 mm

**4**



**649** PHILIP I 'THE ARAB' (244-249). Antoninianus. Rome. 3,38 g - 23,00 mm

**4**



**650** PHILIP I 'THE ARAB' (244-249). Antoninianus. Rome. 5,24 g - 22,99 mm

**4**



**651** PHILIP I 'THE ARAB' (244-249). Antoninianus. Rome. 4,40 g - 22,30 mm

**4**



**652** PHILIP I 'THE ARAB' (244-249). Antoninianus. Rome. 4,40 g - 22,63 mm

**4**



**653** PHILIP I 'THE ARAB' (244-249). Antoninianus. Rome. 3,99 g - 22,81 mm

**4**



**654** HERENNIA ETRUSCILLA (Augusta, 249-251). Antoninianus. Rome. 3,08 g - 21,49 mm

**4**



**655** OTACILIA SEVERA (Augusta, 244-249). Antoninianus. Rome. 3,12 g - 21,27 mm

**4**



**656** TRAJANUS DECIUS (249-251). Antoninianus. Rome. 4,68 g - 23,03 mm

**4**



**657** TRAJANUS DECIUS (249-251). Antoninianus. Rome. 3,81 g - 22,60 mm

**4**



**658** TRAJANUS DECIUS (249-251). Antoninianus. Rome. 4,39 g - 22,27 mm

**4**



**659** TRAJANUS DECIUS (249-251). Antoninianus. Rome. 2,16 g - 22,30 mm

**4**



**660** TREBONIANUS GALLUS (252-253). Antoninianus. Rome. 3,24 g - 22,90 mm

**4**



**661** TREBONIANUS GALLUS (252-253). Antoninianus. Rome. 4,24 g - 21,60 mm

**4**



**662** VALERIAN I (253-260). Antoninianus. Rome 3,21 g - 21,21 mm

**4**



**663** VALERIAN I (253-260). Antoninianus. Rome 3,85 g - 21,85 mm

**4**



**664** VALERIAN I (253-260). Sestertius. Rome. 13,07 g - 26,44 mm

**4**



**665** VOLUSIAN (251-253). Sestertius. Rome. Obv: IMP CAE C VIB VOLVSIANO AVG. Laureate, draped and cuirassed bust right. Rev: IVNONI MARTIALI / S - C. Tetrastyle temple, containing Juno seated facing. 17,24 g - 28,34 mm

**4**



**666** GALLIENUS (253-268). Antoninianus. Rome. 3,16 g - 20,56 mm

**4**



**667** GALLIENUS (253-268). Antoninianus. Rome. 3,72 g - 22,60 mm

**4**



**668** GALLIENUS (253-268). Antoninianus. Rome. 2,54 g - 22,14 mm

**4**



**669** GALLIENUS (253-268). Antoninianus. Rome. 2,57 g - 20,32 mm

**4**



**670** GALLIENUS (253-268). Antoninianus. Rome. 2,68 g - 20,74 mm

**4**



**671** GALLIENUS (253-268). Antoninianus. Rome. 2,74 g - 21,07 mm

**4**



**672** GALLIENUS (253-268). Antoninianus. Rome. 3,70 g - 19,96 mm

**4**



**673** SALONINA (Augusta, 254-268). Antoninianus. Rome. 3,28 g - 19,53 mm

**4**



**674** CLAUDIUS II GOTHICUS (268-270). Antoninianus 3,19 g - 21,25 mm

**4**



**675** CLAUDIUS II GOTHICUS (268-270). Antoninianus 3,53 g - 21,22 mm

**4**



**676** CLAUDIUS II GOTHICUS (268-270). Antoninianus 3,63 g - 21,98 mm

**4**



**677** CLAUDIUS II GOTHICUS (268-270). Antoninianus 2,17 g - 15,86 mm

**4**



**678** AURELIAN (270-275). Antoninianus. 3,01 g - 22,50 mm

**4**



**679** AURELIAN (270-275). Antoninianus. 3,85 g - 21,65 mm

**4**



**680** AURELIAN (270-275). Antoninianus. 3,33 g - 22,57 mm

**4**



**681** AURELIAN (270-275). Antoninianus. 3,98 g - 22,08 mm

**4**



**682** AURELIAN (270-275). Antoninianus. 4,54 g - 23,37 mm

**4**





**683** AURELIAN (270-275). Antoninianus. 3,07 g - 22,60 mm

**4**



**684** AURELIAN (270-275). Antoninianus. 3,76 g - 22,11 mm

**4**



**685** AURELIAN (270-275). Antoninianus. 2,69 g - 20,18 mm

**4**



**686** AURELIAN (270-275). Antoninianus. 4,36 g - 22,53 mm

**4**



**687** AURELIAN (270-275). Antoninianus. 3,97 g - 21,04 mm

**4**



**688** AURELIAN (270-275). Antoninianus. 3,27 g - 22,73 mm

**4**



**689** SEVERINA (Augusta, 270-275). Antoninianus 4,10 g - 23,33 mm

**4**



**690** SEVERINA (Augusta, 270-275). Antoninianus 3,24 g - 22,96 mm

**4**



**691** PROBUS (276-282). Antoninianus 3,73 g - 22,04 mm

**4**



**692** PROBUS (276-282). Antoninianus 3,09 g - 21,85 mm

**4**



**693** PROBUS (276-282). Antoninianus 3,59 g - 23,46 mm

**4**



**694** PROBUS (276-282). Antoninianus 3,05 g - 22,18 mm

**4**



**695** PROBUS (276-282). Antoninianus 3,46 g - 23,45 mm

**4**



**696** PROBUS (276-282). Antoninianus 3,58 g - 21,01 mm

**4**



**697** PROBUS (276-282). Antoninianus 3,90 g - 25,27 mm

**4**



**698** DIOCLETIAN (284-305). Antoninianus 4,18 g - 23,47 mm

**4**



**699** DIOCLETIAN (284-305). Antoninianus 3,41 g - 21,87 mm

**4**



**700** DIOCLETIAN (284-305). Antoninianus 3,80 g - 20,80 mm

**4**



**701** DIOCLETIAN (284-305). Antoninianus 3,28 g - 21,24 mm

**4**



**702** DIOCLETIAN (284-305). Antoninianus 2,40 g - 19,60 mm

**4**



**703** DIOCLETIAN (284-305). Follis 7,05 g - 27,72 mm

**4**



**704** MAXIMIANUS HERCULIUS (First reign, 286-305).  
Antoninianus. 3,13 g - 23,46 mm

**4**



**705** MAXIMIANUS HERCULIUS (First reign, 286-305).  
Antoninianus. 3,14 g - 21,77 mm

**4**



**706** MAXIMIANUS HERCULIUS (First reign, 286-305).  
Antoninianus. 3,95 g - 21,98 mm

**4**



**707** MAXIMIANUS HERCULIUS (First reign, 286-305).  
Antoninianus. 4,37 g - 22,40 mm

**4**



**708** MAXIMIANUS HERCULIUS (First reign, 286-305).  
Antoninianus. 3,64 g - 20,50 mm

**4**



**709** MAXIMIANUS HERCULIUS (First reign, 286-305).  
Antoninianus. 3,49 g - 22,79 mm

**4**



**710** MAXIMIANUS HERCULIUS (First reign, 286-305).  
Antoninianus. 2,67 g - 21,90 mm

**4**



**711** MAXIMIANUS HERCULIUS (First reign, 286-305).  
Antoninianus. 3,09 g - 21,40 mm

**4**



**712** MAXIMIANUS HERCULIUS (First reign, 286-305). Follis 5,09 g  
- 26,22 mm

**4**



**713** MAXIMIANUS HERCULIUS (First reign, 286-305). Follis 10,72  
g - 27,11 mm

**4**



**714** MAXIMIANUS HERCULIUS (First reign, 286-305). Follis 6,47 g  
- 25,33 mm

**4**



**715** MAXIMIANUS HERCULIUS (First reign, 286-305). Follis 7,46 g  
- 24,85 mm

**4**



**716** MAXIMIANUS HERCULIUS (First reign, 286-305). Follis 6,93 g  
- 23,66 mm

**4**



**717** MAXIMINUS II DAIA (310-313). Follis 4,46 g - 21,29 mm

**4**



**718** LICINIUS I (308-324). Follis. 4,02 g - 19,28 mm

**4**



**719** LICINIUS I (308-324). Follis. 2,63 g - 20,50 mm

**4**



**720** LICINIUS I (308-324). Follis. 2,67 g - 20,86 mm

**4**



**721** LICINIUS I (308-324). Follis. 3,12 g - 21,59 mm

**4**



**722** LICINIUS I (308-324). Follis. 2,35 g - 18,82 mm

**4**



**723** LICINIUS I (308-324). Follis. 2,53 g - 22,04 mm

**4**



**724** LICINIUS I (308-324). Follis. 4,08 g - 19,74 mm

**4**



**725** LICINIUS I (308-324). Follis. 3,28 g - 17,94 mm

**4**



**726** LICINIUS I (308-324). Follis. 2,58 g - 18,89 mm

**4**



**727** LICINIUS I (308-324). Follis. 2,61 g - 19,20 mm

**4**



**728** FAUSTA (Augusta, 324-326). Follis. Constantinople. Obv: FLAV MAX FAVSTA AVG. Draped bust right. Rev: SALVS REIPVBLICAE / A / CONS. Salus or empress standing facing, head left, holding two infants in her arms 2,56 g - 20,15 mm

**4**



**729** CONSTANTIUS I (Caesar, 293-305). Antoninianus 2,93 g - 20,60 mm

**4**



**730** CONSTANTINE I 'THE GREAT' (307/10-337). Follis. 2,89 g - 19,00 mm

**4**



**731** CONSTANTINE I 'THE GREAT' (307/10-337). Follis. 3,66 g - 18,60 mm

**4**



**732** CONSTANTINE I 'THE GREAT' (307/10-337). Follis. 3,13 g -  
18,88 mm

**4**



**733** CONSTANTINE I 'THE GREAT' (307/10-337). Follis. 2,76 g -  
19,81 mm

**4**



**734** CONSTANTINE I 'THE GREAT' (307/10-337). Follis. 2,30 g -  
17,95 mm

**4**



**735** CONSTANTINE I 'THE GREAT' (307/10-337). Follis. 2,22 g -  
17,61 mm

**4**



**736** CONSTANTINE I 'THE GREAT' (307/10-337). Follis. 2,37 g -  
18,40 mm

**4**



**737** CONSTANTINE I 'THE GREAT' (307/10-337). Follis. 2,88 g -  
20,35 mm

**4**



**738** CONSTANTINE I 'THE GREAT' (307/10-337). Follis. 2,45 g -  
18,49 mm

**4**





**739** CONSTANTINE I 'THE GREAT' (307/10-337). Follis. 3,05 g - 18,31 mm

**4**



**740** CONSTANTINE I 'THE GREAT' (307/10-337). Follis. 2,94 g - 18,28 mm

**4**



**741** CONSTANTINE I 'THE GREAT' (307/10-337). Follis. 3,19 g - 18,11 mm

**4**



**742** CONSTANTINE I 'THE GREAT' (307/10-337). Follis. 2,44 g - 17,93 mm

**4**



**743** CONSTANTINE I 'THE GREAT' (307/10-337). Follis. 3,10 g - 18,18 mm

**4**



**744** CONSTANTINE I 'THE GREAT' (307/10-337). Follis. 3,04 g - 19,95 mm

**4**



**745** CONSTANTINE I 'THE GREAT' (307/10-337). Follis. 2,61 g - 17,66 mm

**4**



**746** CONSTANTINE I 'THE GREAT' (307/10-337). Follis. 2,69 g - 17,17 mm

**4**



**747** CONSTANTINE I 'THE GREAT' (307/10-337). Follis. 3,00 g - 18,08 mm

**4**



**748** CONSTANTINE I 'THE GREAT' (307/10-337). Follis. 2,41 g - 16,66 mm

**4**



**749** CONSTANTINE I 'THE GREAT' (307/10-337). Follis. 2,81 g - 20,99 mm

**4**



**750** CRISPUS (Caesar, 316-326). Follis 3,36 g - 18,84 mm

**4**



**751** CRISPUS (Caesar, 316-326). Follis 3,00 g - 18,23 mm

**4**



**752** CRISPUS (Caesar, 316-326). Follis 3,07 g - 18,56 mm

**4**



**753** CRISPUS (Caesar, 316-326). Follis 2,77 g - 18,30 mm

**4**



**754** CONSTANTIVS II (337-361). Follis 2,19 g - 18,19 mm

**4**



**755** CONSTANTIVS II (337-361). Follis 2,77 g - 17,15 mm

**4**



**756** CONSTANTIVS II (337-361). Follis 2,36 g - 17,47 mm

**4**



**757** CONSTANTIVS II (337-361). Follis 2,32 g - 19,77 mm

**4**



**758** CONSTANTINE I THE GREAT (306-337). Commemorative Series. Follis. Thessalonica. Obv: VRBS ROMA. Helmeted and cuirassed bust of Roma left. Rev: SMTSE. She-wolf standing left, suckling the twins Romulus and Remus; two stars above. 2,80 g - 18,07 mm

**4**



**759** VALENS (364-378). Follis 2,73 g - 18,90 mm

**4**



**760** CONSTANS (337-350). Follis. Constantinople. Obv: D N CONSTANS P F AVG. Diademed, draped and cuirassed bust left, holding globe. Rev: FEL TEMP REPARATIO / CONSG (star). Soldier advancing right, head left, holding spear and leading small figure from hut beneath tree. 3,92 g - 19,77 mm

**4**



**761** THEODOSIUS I (379-395). Follis 4,59 g - 20,51 mm

**4**



**762** VALENS (364-378). Follis 2,28 g - 16,95 mm

**4**



**763** HONORIUS (393-423). Ae. Nicomedia. Obv: D N HONORIUS P F AVG. Diademed draped and cuirassed bust right. Rev: GLORIA ROMANORVM / SMNA. Honorius standing facing, head right, holding standart and globe. 2,85 g - 22,50 mm

**4**



**764** THEODOSIUS I (379-395). Follis 5,29 g - 22,75 mm

**4**



**765** THEODOSIUS I (379-395). Follis 1,17 g - 14,59 mm

**4**



**766** THEODOSIUS I (379-395). Follis 1,19 g - 12,63 mm

**4**



**767** THEODOSIUS I (379-395). Follis 1,70 g - 16,62 mm

**4**



**768** THEODOSIUS I (379-395). Follis 5,66 g - 22,76 mm

**4**



**769** THEODOSIUS I (379-395). Follis 4,95 g - 21,88 mm

**4**



**770** THEODOSIUS I (379-395). Follis 5,53 g - 22,44 mm

**4**



**771** THEODOSIUS I (379-395). Follis 2,33 g - 17,41 mm

**4**



**772** THEODOSIUS I (379-395). Follis 1,80 g - 11,66 mm

**4**



**773** Roman Imperial Coin. Follis AE 1,18 g - 11,24 mm

**4**



**774** Roman Imperial Coin. Follis AE 2,08 g - 15,31 mm

**4**



**775** Roman Imperial Coin. Follis AE 1,32 g - 11,09 mm

**4**



**776** ANASTASIUS I (491-518). Follis 16,96 g - 32,98 mm

**4**



**777** ANASTASIUS I (491-518). Follis 16,57 g - 32,06 mm

**4**



**778** JUSTINIAN I (527-565). GOLD Semissis. Constantinople. Obv: D N IVSTINIANVS P P AVG. Diademed, draped and cuirassed bust right. Rev: VICTORIA AVGGG / CONOB. Victory seated right on shield, inscribing round shield set upon knees; star to left, inverted staurogram to right. Sear 144. Condition: Very fine. 2,25 g - 17,02 mm 2,23 g - 17,67 mm

**4**



**779** JUSTINIAN I (527-565). Follis 15,58 g - 31,80 mm Artificially patinated

**4**



**780** JUSTINIAN I (527-565). Follis 16,55 g - 33,66 mm Artificially patinated

**4**



**781** JUSTINIAN I (527-565). Follis 16,03 g - 31,27 mm Artificially patinated

**4**



**782** JUSTINIAN I (527-565). Follis 16,17 g - 32,24 mm Artificially patinated

**4**



**783** JUSTINIAN I (527-565). Follis 14,15 g - 28,90 mm Artificially patinated

**4**



**784** JUSTINIAN I (527-565). Follis 16,39 g - 28,02 mm Artificially patinated

**4**



**785** JUSTINIAN I (527-565). Follis 16,39 g - 32,20 mm Artificially patinated

**4**



**786** JUSTINIAN I (527-565). Follis 15,35 g - 31,46 mm Artificially patinated

**4**



**787** JUSTINIAN I (527-565). Follis 14,01 g - 30,80 mm Artificially patinated

**4**



**788** JUSTINIAN I (527-565). Follis 16,50 g - 30,78 mm Artificially patinated

**4**



**789** JUSTINIAN I (527-565). Follis 15,82 g - 30,48 mm Artificially patinated

**4**



**790** JUSTINIAN I (527-565). Follis 15,25 g - 31,31 mm Artificially patinated

**4**



**791** JUSTINIAN I (527-565). Follis 7,93 g - 25,99 mm

**4**



**792** JUSTINIAN I (527-565). Follis 8,84 g - 24,06 mm

**4**



**793** JUSTINIAN I (527-565). Follis 8,84 g - 25,85 mm Artificially patinated

**4**



**794** JUSTINIAN I (527-565). Follis 7,18 g - 25,98 mm Artificially patinated

**4**





**795** JUSTIN II, with SOPHIA (565-578). Follis 13,44 g - 30,65 mm  
**4**



**796** JUSTIN II, with SOPHIA (565-578). Follis 15,36 g - 29,29 mm  
**4**



**797** JUSTIN II, with SOPHIA (565-578). Follis 12,75 g - 28,21 mm  
**4**



**798** JUSTIN II, with SOPHIA (565-578). Follis 13,27 g - 31,40 mm  
Artificially patinated  
**4**



**799** JUSTIN II, with SOPHIA (565-578). Follis 14,74 g - 30,30 mm  
Artificially patinated  
**4**



**800** JUSTIN II, with SOPHIA (565-578). Follis 12,09 g - 29,70 mm  
Artificially patinated  
**4**



**801** JUSTIN II, with SOPHIA (565-578). Follis 12,42 g - 27,86 mm  
Artificially patinated  
**4**



**802** JUSTIN II, with SOPHIA (565-578). Follis 7,21 g - 23,03 mm  
Artificially patinated

**4**



**803** JUSTIN II, with SOPHIA (565-578). Follis 4,90 g - 23,99 mm  
Artificially patinated

**4**



**804** MAURICE TIBERIUS (582-602). Follis. 9,93 g - 31,33 mm

**4**



**805** MAURICE TIBERIUS (582-602). Follis. 11,59 g - 28,28 mm

**4**



**806** MAURICE TIBERIUS (582-602). Follis. 10,26 g - 28,23 mm

**4**



**807** MAURICE TIBERIUS (582-602). Follis. 10,90 g - 28,99 mm

**4**



**808** MAURICE TIBERIUS (582-602). Follis. 11,12 g - 27,80 mm

**4**



**809** MAURICE TIBERIUS (582-602). Follis. 11,64 g - 30,46 mm  
Artificially patinated

**4**



**810** MAURICE TIBERIUS (582-602). Follis. 10,96 g - 28,44 mm  
Artificially patinated

**4**



**811** MAURICE TIBERIUS (582-602). Follis. 10,63 g - 29,58 mm  
Artificially patinated

**4**



**812** MAURICE TIBERIUS (582-602). Follis. 11,36 g - 31,69 mm  
Artificially patinated

**4**



**813** MAURICE TIBERIUS (582-602). Follis. 11,16 g - 28,00 mm  
Artificially patinated

**4**



**814** MAURICE TIBERIUS (582-602). Follis. 10,55 g - 28,76 mm  
Artificially patinated

**4**



**815** MAURICE TIBERIUS (582-602). Follis. 5,95 g - 23,32 mm  
Artificially patinated

**4**



**816** MAURICE TIBERIUS (582-602). Follis. 6,67 g - 20,79 mm

**4**



**817** MAURICE TIBERIUS (582-602). Follis. 7,46 g - 27,10 mm

**4**



**818** MAURICE TIBERIUS (582-602). Follis. 10,95 g - 31,10 mm  
Artificially patinated

**4**



**819** MAURICE TIBERIUS (582-602). Follis. 13,03 g - 31,50 mm

**4**



**820** MAURICE TIBERIUS (582-602). Follis. 7,10 g - 23,11 mm

**4**



**821** HERACLIUS (610-641). Follis 11,74 g - 30,78 mm

**4**



**822** HERACLIUS (610-641). Follis 11,24 g - 28,84 mm

**4**



**823** HERACLIUS (610-641). Follis 9,86 g - 29,88 mm Artificially patinated

**4**



**824** HERACLIUS (610-641). Follis 8,90 g - 27,28 mm Artificially patinated

**4**



**825** HERACLIUS (610-641). Follis 11,98 g - 27,10 mm

**4**



**826** MICHAEL II THE AMORIAN with THEOPHILUS (820-829). Follis. Constantinople. Obv: MIXAHL S ΘEOFILOS. Crowned facing busts of Michael and Theophilus; cross above. Rev: Large M; X/X/X - N/N/N across field; cross above, Θ below. 8,04 g - 32,16 mm

**4**



**827** MICHAEL I RHANGABE with THEOPHYLACTUS (811-813). Follis. Constantinople. Obv: Crowned facing busts of Michael and Theophylactus. Rev: Large M; X/X/X - N/N/N across field; cross above, A below. 5,43 g - 21,80 mm

**4**



**828** MICHAEL I RHANGABE with THEOPHYLACTUS (811-813). Follis. Constantinople. Obv: Crowned facing busts of Michael and Theophylactus. Rev: Large M; X/X/X - N/N/N across field; cross above, B below. 2,31 g - 17,94 mm

**4**



**829** LEO VI THE WISE (886-912). Follis. Constantinople. Obv: + ΛΕΟ Η ΒΑΣΙΛΕΥΣ ΡΩΜ'. Crowned facing bust, holding akakia. Rev: + ΛΕΟ Η / Ε Η ΘΕΟ ΒΑ / ΣΙΛΕΥΣ Ρ / ΟΜΕΟ Η. Legend in four lines. 4,33 g - 24,44 mm

**4**



**830** NICEPHORUS II PHOCAS (963-969). Follis. Constantinople. Obv: ΝΙΚΗΦΩΡΟΣ ΒΑΣΙΛΕΥΣ ΡΩΜ'. Crowned bust facing, wearing loros and holding cross-tipped scepter and globus surmounted by trefoil. Rev: + ΝΙΚΗΦΩΡΟΣ / Ε Η ΘΕΩ ΒΑΣΙΛΕΥΣ ΡΩΜΑΙΩΝ. Legend in four lines. Rare 3,94 g - 26,11 mm

**4**



**831** Byzantine Coin Ae Follis 4,39 g - 23,66 mm

**4**



**832** CONSTANTINE VII PORPHYROGENITUS with ROMANUS II (913-959). GOLD Solidus. Constantinople. Obv: + ΙΗΣ ΧΡΗΣ ΡΕΧ ΡΕΓΝΑΝΤΙΩΜ. Facing bust of Christ Pantokrator; three pellets at edge of each arm of nimbus cross. Rev: + ΚΩΝΣΤΑΝΤΙΝΟΣ ΡΩΜΑΙΩΝ ΑΥΓΟΥΣΤΟΣ. Facing busts of Basil and Constantine and Romanus, holding patriarchal cross between them. Sear 1751. Condition: Very fine. 4,35 g - 18,00 mm 4,38 g - 18,31 mm

**4**



**833** Byzantine Coin Ae Follis 7,46 g - 26,16 mm

**4**



**834** Byzantine Coin Ae Follis 4,10 g - 21,80 mm

**4**



**835** Byzantine Coin Ae Follis 3,70 g - 21,00 mm

**4**



**836** Byzantine Coin Ae Follis 5,98 g - 21,80 mm

**4**



**837** Byzantine Coin Ae Follis 3,43 g - 28,72 mm

**4**



**838** Byzantine Coin Ae Follis 1,46 g - 21,94 mm

**4**



**839** Byzantine Coin Ae Follis 3,13 g - 24,77 mm

**4**



**840** PHOCAS with LEONTIA (602-610). Follis. Theoupolis (Antioch). Dated RY 2 (603/4). Obv: D N FOCA NE PE AV. Phocas, holding globus cruciger, and Leontia, holding cruciform sceptre, standing facing; cross above. Rev: Large m; A/N/N/O - II (date) across field; cross above; THECP 9,16 g - 27,58 mm Artificially patinated

**4**



**841** Byzantine Coin Ae Follis 6,72 g - 27,68 mm Artificially patinated

**4**



**842** CONSTANTINE X DUCAS with EUDOCIA (1059-1067). Follis. Constantinople. Obv: + EMMANOVHA / IC - XC. Christ Pantokrator standing facing on footstool. Rev: Constantine and Eudocia standing facing, holding between them a labarum with cross-piece on shaft set upon three steps. 10,80 g - 28,15 mm Artificially patinated

4



**843** CONSTANTINE X DUCAS with EUDOCIA (1059-1067). Follis. Constantinople. Obv: + EMMANOVHA / IC - XC. Christ Pantokrator standing facing on footstool. Rev: Constantine and Eudocia standing facing, holding between them a labarum with cross-piece on shaft set upon three steps. 9,32 g - 26,22 mm Artificially patinated

4



**844** CONSTANTINE X DUCAS with EUDOCIA (1059-1067). Follis. Constantinople. Obv: + EMMANOVHA / IC - XC. Christ Pantokrator standing facing on footstool. Rev: Constantine and Eudocia standing facing, holding between them a labarum with cross-piece on shaft set upon three steps. 10,96 g - 30,05 mm Artificially patinated

4



**845** CONSTANTINE X DUCAS with EUDOCIA (1059-1067). Follis. Constantinople. Obv: + EMMANOVHA / IC - XC. Christ Pantokrator standing facing on footstool. Rev: Constantine and Eudocia standing facing, holding between them a labarum with cross-piece on shaft set upon three steps. 6,59 g - 27,90 mm

4



**846** CONSTANTINE X DUCAS with EUDOCIA (1059-1067). Follis. Constantinople. Obv: + EMMANOVHA / IC - XC. Christ Pantokrator standing facing on footstool. Rev: Constantine and Eudocia standing facing, holding between them a labarum with cross-piece on shaft set upon three steps. 3,59 g - 22,61 mm

4





**847** Byzantine Coin, ANONYMOUS FOLLIS 8,10 g - 30,09 mm

**4**



**848** Byzantine Coin, ANONYMOUS FOLLIS 8,72 g - 26,50 mm

**4**



**849** Byzantine Coin, ANONYMOUS FOLLIS 11,05 g - 28,65 mm

**4**



**850** Byzantine Coin, ANONYMOUS FOLLIS 10,30 g - 27,80 mm  
Artificially patinated

**4**



**851** Byzantine Coin, ANONYMOUS FOLLIS 10,80 g - 28,39 mm  
Artificially patinated

**4**



**852** Byzantine Coin, ANONYMOUS FOLLIS 9,55 g - 25,68 mm  
Artificially patinated

**4**



**853** Byzantine Coin, ANONYMOUS FOLLIS 7,26 g - 28,74 mm  
Artificially patinated

**4**



**854** Byzantine Coin, ANONYMOUS FOLLIS 13,27 g - 34,24 mm  
Artificially patinated

4



**855** Byzantine Coin, ANONYMOUS FOLLIS 10,72 g - 27,25 mm  
Artificially patinated

4



**856** Byzantine Coin, ANONYMOUS FOLLIS 10,72 g - 31,21 mm  
Artificially patinated

4



**857** Byzantine Coin, ANONYMOUS FOLLIS 12,94 g - 30,68 mm

4



**858** Byzantine Coin, ANONYMOUS FOLLIS 14,40 g - 29,11 mm

4



**859** Byzantine Coin, ANONYMOUS FOLLIS 10,77 g - 28,28 mm  
Artificially patinated

4



**860** Byzantine Coin, ANONYMOUS FOLLIS 10,19 g - 32,72 mm  
Artificially patinated

4



**861** Byzantine Coin, ANONYMOUS FOLLIS 11,48 g - 31,11 mm  
Artificially patinated

**4**



**862** Byzantine Coin, ANONYMOUS FOLLIS 13,76 g - 28,78 mm  
Artificially patinated

**4**



**863** Byzantine Coin, ANONYMOUS FOLLIS 9,54 g - 27,80 mm  
Artificially patinated

**4**



**864** Byzantine Coin, ANONYMOUS FOLLIS 12,79 g - 33,10 mm  
Artificially patinated

**4**



**865** Byzantine Coin, ANONYMOUS FOLLIS 9,44 g - 29,55 mm  
Artificially patinated

**4**



**866** Byzantine Coin, ANONYMOUS FOLLIS 9,62 g - 29,35 mm  
Artificially patinated

**4**



**867** Byzantine Coin, ANONYMOUS FOLLIS 10,66 g - 30,62 mm

**4**



**868** Byzantine Coin, ANONYMOUS FOLLIS 6,73 g - 28,60 mm

**4**



**869** Byzantine Coin, ANONYMOUS FOLLIS 14,60 g - 32,88 mm

**4**



**870** Byzantine Coin, ANONYMOUS FOLLIS 8,79 g - 29,78 mm

**4**



**871** Byzantine Coin, ANONYMOUS FOLLIS 9,81 g - 32,79 mm  
Artificially patinated

**4**



**872** Byzantine Coin, ANONYMOUS FOLLIS 9,08 g - 32,27 mm  
Artificially patinated

**4**



**873** Byzantine Coin, ANONYMOUS FOLLIS 8,10 g - 29,61 mm  
Artificially patinated

**4**



**874** Byzantine Coin, ANONYMOUS FOLLIS 10,26 g - 29,72 mm  
Artificially patinated

**4**



**875** Byzantine Coin, ANONYMOUS FOLLIS 16,82 g - 32,58 mm  
Artificially patinated

**4**



**876** Byzantine Coin, ANONYMOUS FOLLIS 6,73 g - 28,38 mm  
Artificially patinated

**4**



**877** Byzantine Coin, ANONYMOUS FOLLIS 9,54 g - 28,60 mm  
Artificially patinated

**4**



**878** Byzantine Coin, ANONYMOUS FOLLIS 11,85 g - 27,73 mm  
Artificially patinated

**4**



**879** Byzantine Coin, ANONYMOUS FOLLIS 9,02 g - 27,71 mm  
Artificially patinated

**4**



**880** Byzantine Coin, ANONYMOUS FOLLIS 9,26 g - 30,47 mm  
Artificially patinated

**4**



**881** Byzantine Coin, ANONYMOUS FOLLIS 10,22 g - 30,83 mm

**4**



**882** Byzantine Coin, ANONYMOUS FOLLIS 8,32 g - 28,50 mm

**4**



**883** Byzantine Coin, ANONYMOUS FOLLIS 11,90 g - 29,80 mm

**4**



**884** Byzantine Coin, ANONYMOUS FOLLIS 9,31 g - 25,32 mm

**4**



**885** Byzantine Coin, ANONYMOUS FOLLIS 12,32 g - 29,42 mm

**4**



**886** Byzantine Coin, ANONYMOUS FOLLIS 3,49 g - 25,02 mm  
Artificially patinated

**4**



**887** Byzantine Coin, ANONYMOUS FOLLIS 2,81 g - 21,61 mm  
Artificially patinated

**4**



**888** Byzantine Coin, ANONYMOUS FOLLIS 3,87 g - 22,54 mm

**4**



**889** Byzantine Coin, ANONYMOUS FOLLIS 7,38 g - 28,80 mm  
Artificially patinated

4



**890** Islamic Coin AE 3,43 g - 23,99 mm

4



**891** Islamic Coin AE 4,30 g - 23,76 mm

4



**892** Islamic Coin AE 3,88 g - 22,75 mm

4



**893** Islamic Coin AE 3,01 g - 20,44 mm

4



**894** Islamic Coin AE 4,67 g - 29,42 mm

4



**895** Islamic Coin AE 4,26 g - 28,10 mm

4



**896** Islamic Coin AE 3,99 g - 20,11 mm

4



**897** Islamic Coin Silver AR 2,82 g - 24,84 mm

4



**898** Islamic Coin Silver AR 2,69 g - 23,40 mm

4



**899** Islamic Coin Silver AR 2,77 g - 22,24 mm

4



**900** Islamic Coin Silver AR 2,92 g - 23,80 mm

4



**901** Islamic Coin Silver AR 2,91 g - 23,88 mm

4



**902** Islamic Coin Silver AR 2,62 g - 20,70 mm

4





**903** Islamic Coin Silver AR 0,78 g - 17,35 mm

**4**



**904** Islamic Coin Silver AR 1,75 g - 19,20 mm

**4**



**905** Islamic Coin Silver AR 1,96 g - 17,55 mm

**4**



**906** Islamic Coin Silver AR 1,11 g - 14,80 mm

**4**



**907** Islamic Coin Silver AR 1,17 g - 14,54 mm

**4**



**908** Islamic Coin Silver AR 1,13 g - 12,30 mm

**4**



**909** Islamic Coin Silver AR 1,11 g - 14,30 mm

**4**



**910** Islamic Coin Silver AR 0,68 g - 14,96 mm

**4**



**911** Islamic Coin Silver AR 0,81 g - 13,43 mm

**4**



**912** Islamic Coin Silver AR 1,09 g - 12,76 mm

**4**



**913** Islamic Coin Silver AR 1,01 g - 13,40 mm

**4**



**914** Islamic Coin Silver AR 1,02 g - 12,60 mm

**4**



**915** Islamic Coin Silver AR 1,13 g - 13,83 mm

**4**



**916** Islamic Coin Silver AR 1,24 g - 12,14 mm

**4**



**917** Islamic Coin Silver AR 0,67 g - 10,49 mm

**4**



**918** Islamic Coin Silver AR 1,12 g - 11,73 mm

**4**



**919** Islamic Coin Silver AR 1,07 g - 13,07 mm

**4**



**920** Islamic Coin Silver AR 1,15 g - 13,70 mm

**4**



**921** Islamic Coin Silver AR 1,20 g - 17,22 mm

**4**



**922** Islamic Coin Silver AR 0,87 g - 10,70 mm

**4**



**923** Islamic Coin Silver AR 1,12 g - 13,52 mm

**4**



**924** Islamic Coin Silver AR 0,55 g - 10,54 mm

**4**



**925** Islamic Coin Silver AR 0,92 g - 13,58 mm

**4**



**926** Islamic Coin Silver AR 1,17 g - 13,14 mm

**4**



**927** Medieval Coin Silver AR 1,11 g - 17,75 mm

**4**



**928** Early Medieval & Islamic ISLAMIC, 'Abbasid Caliphate. temp. Al-Mahdi, AH 158-169 / AD 775-785. citing governor 'Umar ibn al-'Alā Tabaristan Draped Sasanian-style bust to right, Early Medieval & Islamic 3,92 g - 33,13 mm

**4**



**929** Early Medieval & Islamic ISLAMIC, 'Abbasid Caliphate. temp. Al-Mahdi, AH 158-169 / AD 775-785. citing governor 'Umar ibn al-'Alā Tabaristan Draped Sasanian-style bust to right, Early Medieval & Islamic 1,94 g - 23,31 mm

**4**



**930** Early Medieval & Islamic ISLAMIC, 'Abbasid Caliphate. temp. Al-Mahdi, AH 158-169 / AD 775-785. citing governor 'Umar ibn al-'Alā Tabaristan Draped Sasanian-style bust to right, Early Medieval & Islamic 2,06 g - 24,00 mm

**4**



**931** World Coin AR Silver 2,63 g - 25,93 mm

**4**



**932** World Coin AR Silver 2,52 g - 25,58 mm

**4**



**933** World Coin AR Silver 2,71 g - 24,98 mm

**4**



**934** World Coin AR Silver 2,96 g - 25,97 mm

**4**



**935** Byzantine Lead Seal. 5,91 g - 21,16 mm

**4**



**936** Byzantine Lead Seal. 9,57 g - 26,51 mm

**4**



**937** Byzantine Lead Seal. 7,06 g - 25,15 mm

**4**



**938** Byzantine Lead Seal. 8,87 g - 23,75 mm

**4**



**939** Byzantine Lead Seal. 8,18 g - 20,94 mm

**4**



**940** Byzantine Lead Seal. 5,00 g - 19,67 mm

**4**



**941** Byzantine Lead Seal. 6,59 g - 24,51 mm

**4**



**942** Byzantine Lead Seal. 6,59 g - 22,04 mm

**4**



**943** Byzantine Lead Seal. 7,46 g - 16,93 mm

**4**



**944** Byzantine Lead Seal. 6,20 g - 19,81 mm

**4**



**945** Byzantine Lead Seal. 12,34 g - 26,93 mm

**4**



**946** Byzantine Lead Seal. 6,89 g - 20,25 mm

**4**



**947** Byzantine Lead Seal. 6,18 g - 17,50 mm

**4**



**948** Byzantine Lead Seal. 11,80 g - 21,97 mm

**4**



**949** Byzantine Lead Seal. 6,36 g - 20,91 mm

**4**



**950** Byzantine Lead Seal. 17,88 g - 22,10 mm

**4**



**951** Byzantine Lead Seal. 15,88 g - 22,56 mm

**4**



**952** Byzantine Lead Seal. 18,57 g - 26,10 mm

**4**



**953** Byzantine Lead Seal. 14,72 g - 22,73 mm

**4**



**954** Byzantine Lead Seal. 10,62 g - 18,18 mm

**4**



**955** Byzantine Lead Seal. 5,77 g - 24,03 mm

**4**



**956** Byzantine Lead Seal. 8,45 g - 25,70 mm

**4**



**957** Byzantine Lead Seal. 8,03 g - 20,30 mm

**4**



**958** Byzantine Lead Seal. 6,95 g - 19,62 mm

**4**





**959** Byzantine Lead Seal. 4,63 g - 18,18 mm

**4**



**960** Byzantine Lead Seal. 6,95 g - 20,78 mm

**4**



**961** Byzantine Lead Seal. 11,60 g - 22,58 mm

**4**



**962** Byzantine Lead Seal. 12,95 g - 23,93 mm

**4**



**963** Byzantine Lead Seal. 10,75 g - 24,78 mm

**4**



**964** Byzantine Lead Seal. 21,85 g - 27,00 mm

**4**



**965** Byzantine Lead Seal. 11,29 g - 23,76 mm

**4**



**966** Byzantine Lead Seal. 11,53 g - 21,07 mm

**4**



**967** Byzantine Lead Seal. 11,53 g - 20,90 mm

**4**



**968** Theatre Ticket. Lead 11,09 g - 21,21 mm

**4**



**969** Theatre Ticket. Lead 2,42 g - 14,18 mm

**4**



**970** Theatre Ticket. Lead 3,04 g - 15,80 mm

**4**



**971** Group Lots Byzantine Lead Seals

**4**



**972** Group Lots Byzantine Lead Seals

**4**



**973** Group Lots Byzantine Lead Seals

**4**



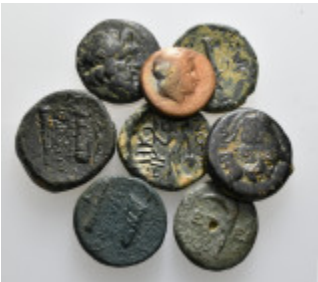
**974** Group Lots Greek Coins

**4**



**975** Group Lots Greek Coins

**4**



**976** Group Lots Greek Coins

**4**



**977** Group Lots Greek Coins

**4**



**978** Group Lots Greek Coins

**4**



**979** Group Lots Roman Provincial Coins

**4**



**980** Group Lots Roman Provincial Coins

**4**



**981** Group Lots Roman Provincial Coins

**4**



**982** Group Lots Roman Provincial Coins

**4**



**983** Group Lots Roman Provincial Coins

**4**



**984** Group Lots Roman Provincial Coins

**4**



**985** Group Lots Byzantine Coins

**4**



**986** Group Lots Byzantine Coins Artificially patinated

**4**



**987** Group Lots Byzantine Coins Artificially patinated

**4**



**988** Group Lots Byzantine Coins Artificially patinated

**4**



**989** Group Lots Byzantine Coins Artificially patinated

**4**



**990** Group Lots Byzantine Coins Artificially patinated

**4**



**991** Group Lots Silver Coins

**4**



**992** Group Lots Silver Coins

**4**



**993** Group Lots Silver Coins

**4**



**994** Collectible Item 1,60 g - 18,30 mm

**4**



**995** Collectible Item 2,89 g - 23,23 mm

**4**



**996** Collectible Item 7,10 g - 26,57 mm

**4**



**997** Collectible Item 1,56 g - 17,42 mm

**4**



**998** Collectible Item 4,28 g - 21,49 mm

**4**



**999** Collectible Item 2,98 g - 21,65 mm

**4**



**1000** Collectible Item 0,98 g - 16,48 mm

**4**



**1001** Collectible Item 18,54 g - 33,01 mm

**4**



**1002** Collectible Item 22,93 g - 24,50 mm

**4**



**1003** Collectible Item 1,33 g - 30,30 mm

**4**



**1004** Collectible Item 8,04 g - 31,60 mm

**4**



**1005** Collectible Item 6,91 g - 27,62 mm

**4**



**1006** Collectible Item 9,36 g - 27,81 mm

**4**





**1007** Collectible Item 1,37 g - 20,43 mm

**4**



**1008** Collectible Item 5,14 g - 40,13 mm

**4**



**1009** Collectible Item 7,69 g - 16,53 mm

**4**



**1010** Collectible Item 3,92 g - 18,60 mm

**4**