



Numisart

Auction 4

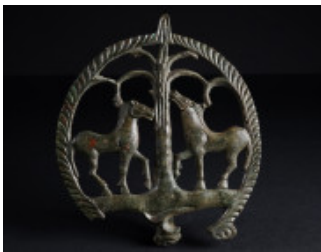
5 May 2024

All prices are starting prices (EUR)
PDF catalog created by www.biddr.com



1 A ROMAN BRONZE ATTACHMENT WITH EROS BINDING HERCULES Circa 1st-2nd century AD. Fine circular attachment worked in three-quarter relief, depicting Hercules nude standing front with his hands tied behind his back, his head turned to right. Behind the divine hero, a tree. Next to him to the right, Eros is shown with curly hair and the typical central braid, seated nude on Hercules' lionskin. The rare subject of Eros binding Hercules is symbolic of the power of love being greater even than the strength of the greatest hero. Small flaw below Eros' head. H 70 mm Ex European private collection, acquired on the German art market before 2010.

1'500



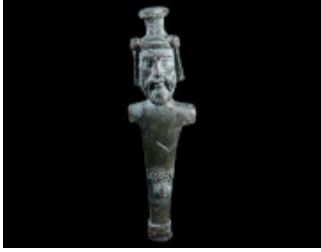
2 A ROMAN BRONZE CHARIOT FITTING WITH TWO HORSES Circa 2nd-3rd century AD. Elaborately decorated high-quality openwork fitting with two horses and a palm tree within a ribbed circular frame. In the centre, a palm tree with large, curved branches, flanked by two horses probably eating or chewing palm leaves. The scene is set on an uneven baseline representing the ground. Centrally below, a further floral element. On the back, a large C-shaped loop for attachment. Bottom part broken. H 10.6 cm Austrian private collection, acquired on the European art market.

1'200



3 A GREEK OR EARLY ROMAN BRONZE HANDLE WITH A GODDESS Circa 3rd century BC - 1st century AD. Upper part of an exquisite handle, probably from an oinochoe (wine jug). The handle terminates in the head of a goddess wearing an Attic-Chalcidian helmet (?), possibly a representation of Athena. To either side of the head, a small horizontal terminal. L 77 mm (total), Height of head 30 mm Ex European private collection, acquired on the German art market before 2000.

250



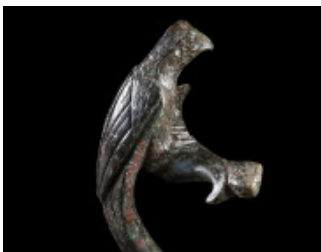
4 A ROMAN BRONZE HERM OF PRIAPUS Circa 1st-2nd century AD. The bearded god with harsh facial features is wearing a short veil and a fillet with bunches of grapes or berries. The head is surmounted by a modius and set on a herm pillar with arm stumps. The midsection of the pillar is adorned with male genitalia. The phallus is not erect, but the iconography suggests that Priapus is represented here. H 83 mm Ex European private collection, acquired on the German art market before 2010.

400



5 A LARGE AND EXPRESSIVE ROMAN BRONZE APPLIQUE OF SILENUS Circa 1st century AD. High-quality mask applique of Silenus with very well-articulated facial features. The companion of Dionysus is depicted with upswept hair and large, pointed ears. The slightly bulging almond-shaped eyes are deeply set below his furrowed, overhanging brow. He is shown with a wide snub nose and pronounced cheek bones; his flowing beard and moustache form a thick mass of radiating wavy locks. Above the head, probably a bunch of fruits and berries. Two holes for attachment. The outer left part of the beard and the ear were either separately attached or never existed, depending on the function and original position of the applique. H 94 mm From the collection of an Austrian art dealer, acquired on the European art market.

1'000



6 A ROMAN BRONZE JUG HANDLE IN THE FORM OF A PARROT Circa 1st-2nd century AD. Finely worked and decorated handle of a jug in the shape of a perching parrot with long tail feathers. The two curved terminals that would 'embrace' the mouth of the jug are shaped in the form of swan heads, the beaks now missing. All with incised decoration. Small part of the lower end of the handle not preserved. H 11.6 cm Ex Austrian private collection, acquired in the 1980s-90s.

280



7 AN EXTREMELY FINE ROMAN SILVER HANDLE FROM A CUP Circa 1st century AD. A decorated Roman silver handle of the highest quality, originally attached to a shallow cup. Finely articulated, with an intricate floral decoration on the top. The two horizontal terminals that would 'embrace' the mouth of the cup are shaped in the form of swan heads with long pointed beaks. A few modern scratches where the handle was soldered onto the cup. H 35 mm, W 62 mm Ex Austrian private collection, acquired in the 1980s-90s.

450



8 A DECORATED GREEK PEDIMENT-SHAPED GOLD DIADEM Hellenistic period, circa late 4th-3rd century BC. Made of thin gold sheet with die-formed decoration. In the centre a palmette complex, on either side a band of laurel leaves and berries; all framed by a line border. Broken/bent and repaired (attached to acrylic glass), with minor parts missing. L 21.5 cm; Gold! Ex European private collection, acquired on the German art market before 2000.

650



9 A DECORATED ROMAN BRONZE CAVALRY BREASTPLATE Circa 2nd-3rd century AD. Left breast plate of a Roman chain mail coat or scale armour. The plate is decorated in relief with the bust of a Greek/Roman hero, nude but for an aegis hanging over his right shoulder. He has short curly hair and a distinctive face with contracted brows and an aquiline nose, reminiscent of Greek heroes and recalling Roman face mask helmets of the so-called 'Alexander type'. Below, a club and a bow are depicted, both attributes of Hercules. Framed by a diagonally ribbed border. With a series of rectangular slots and pierced holes for fastening and attaching to the armour. Two symmetrical breastplates (left and right) would have helped to close the mail or scale mail across the chest and provide a tight fit around the neck. With a few repaired cracks/breaks. See: Th. Fischer, *Die Armee der Caesaren* (Regensburg 2012), pp. 165-66. H 143 mm, W 75 mm Ex European private collection. Before, German private collection, acquired before 2010.

3'500



10 A EUROPEAN EARLY BRONZE AGE TORQUE Circa 2000-1600 BC. Solid-cast plain bronze torque; the tapering ends with flattened coiled terminals ('Ösenhalsring'). Diameter 15.5 cm (max.) Ex Austrian private collection Hofrat Dr. A. O., 1920-1994.

300



11 A EUROPEAN EARLY BRONZE AGE FLANGED AXE HEAD Circa 1800-1600 BC. Bronze axe head with flanges ('Randleistenbeil') and wide blade. Minor corrosion and some scratches. L 14.4 cm Ex Austrian private collection Hofrat Dr. A. O., 1920-1994.

250



12 A ROMAN BRONZE APPLIQUE OF THE PERSONIFICATION OF AFRICA Circa 2nd-3rd century AD. Applique in the form of a head of Africa wearing an elephant headdress. The headdress is well rendered and decorated all-over with punched dots. One tusk and tip of the trunk broken. Back partly hollow. H 30 mm Acquired on the German art market between 2004-2010.

120



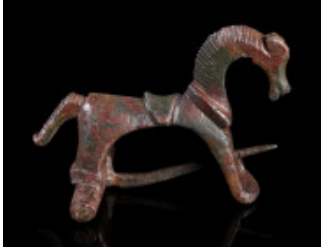
13 A ROMAN GOLD RING WITH A PHALLUS Circa 1st-2nd century AD. Small ring with oval bezel that supports a gold phallus in relief. Probably a child's ring, meant to bring good luck and protect the wearer against evil spirits. Outer diameter 15 mm Ex European private collection, acquired on the German art market before 2000.

400



14 A ROMAN RED JASPER INTAGLIO DEPICTING ARTEMIS EPHESIA Circa 2nd-3rd century AD. Oval intaglio featuring Artemis of Ephesus standing facing, flanked by two stags; above, star and crescent. The temple of Artemis and her cult statue at Ephesus were regarded as one of the seven wonders of the ancient world. H 13 mm Inventory of an Austrian art dealer. Form an old German collection.

360



15 A LARGE ROMAN BRONZE HORSE BROOCH Circa 2nd-3rd century AD. Fine brooch in the shape of a stylised horse with saddle; worked three-dimensional with beautiful (incised) details of tail, mane, and head. With hinged pin and high transverse catch plate. L 57 mm Acquired on the UK art market.

200



16 A ROMAN MARBLE PENIS FROM A LIFE-SIZED STATUE Circa 1st-2nd century AD. Penis with well-articulated foreskin and the remains of a puntello beneath the tip. Broken off where the scrotum would have started. L 66 mm Acquired on the UK art market.

300



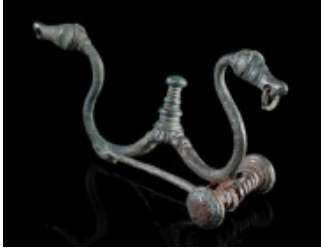
17 A ROMAN RED SLIP WARE FLASK WITH A GLADIATOR FIGHTING A LION North Africa, circa 3rd century AD. Amphora-shaped flask (Amphoriskos) with two strap handles and a ring base. The body is decorated with moulded appliques in relief, depicting on one side a gladiator with a large rectangular shield (scutum) fighting an attacking lion, framed by two palm fronds; the other side shows a rosette between two palm fronds. African Red Slip Ware (ARS) C, Form Hayes 172. Neck partly broken and restored. H 16.5 cm Austrian private collection, acquired on the European art market.

680



18 A ROMAN PALE BLUE-GREEN GLASS FINELY RIBBED BOWL Circa early 1st century AD. An exquisite shallow mould-blown glass bowl with fine vertical ribs extending from the shoulder to two horizontal ribs slightly above the bottom; the domed base with a raised dot at the centre and three concentric circles. Mold seams faintly visible on rim. For a similar bowl see: E. M. Stern, *The Toledo Museum of Art. Roman mold-blown Glass* (Toledo 1995), p.113, no.14. The form of this shallow bowl was inspired by Greek bronze phialae (libation bowls). Diameter 127 mm, H 42 mm Acquired on the UK art market.

600



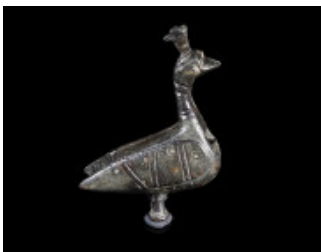
19 A UNIQUE EARLY CELTIC BRONZE FIGURAL FIBULA La Tène A, circa 5th century BC. Symmetric fibula with animal heads ('Symmetrische Tierkopffibel'). The elaborately worked fibula features two stylised 'dragon-headed' terminals facing in opposite directions. The middle of the bow is decorated with a riveted profiled knob. With spring and pin. Pin and possibly one terminal knob of the axis-pin restored. For Early La Tène Period figural fibulas see: U. Binding, Studien zu den figürlichen Fibeln der Frühlatènezeit (Bonn 1993), esp. Type 14. L 58 mm, H 30 mm Ex Gorny & Mosch, Munich, Auction 279 (2021), Lot 204. Before, private collection C. N., Germany, acquired privately in the early 2000s.

800



20 A LARGE EARLY BYZANTINE BRONZE MOUNT WITH A BULL Circa 5th-7th century AD. Mount in the shape of a bull's head with incised decoration and an incised cross on the nose. With three large loops. Most commonly, these objects are interpreted as part of the horse harness. For a close comparison and an interpretation see for example: L. Wamser (ed.), Die Welt von Byzanz - Europas östliches Erbe (Munich 2004), cat. no. 777. H 88 mm Austrian private collection, acquired on the European art market.

450



21 A BYZANTINE BRONZE PADLOCK IN THE SHAPE OF A PEACOCK Circa 9th-12th century AD. Figural padlock in the shape of a peacock with folded wings. Decorated with incised lines and ring-and-dot motifs. Complete except for part of the crest and the shackle/spring assembly. L 43 mm, H 53 mm Ex European private collection, acquired on the German art market before 2000.

280



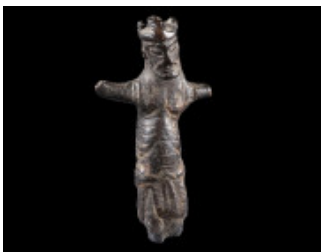
22 A BYZANTINE BRONZE RELIQUARY CROSS WITH CHRIST Circa 10th-12th century AD. Upper half of a reliquary cross (enkolpion) depicting Christ crucified, flanked by St. John (right) and Mary (left). Christ wears a colobium, his head with a cross nimbus inclined to the left; his feet rest on a footrest (suppedaneum). Above Christ, a tabula ansata and a cross; on top, sun and moon. In the transverse arms of the cross, beneath Christ's arms, a Greek inscription from John 19, 26-27 that (should) read: ΙΔΕ Ο Υ(ΙΟ)C COY / ΙΔΟΥ Η ΜΗΤΗΡ COY ('Behold thy son' and 'Behold thy mother'). A hole for suspension/attachment on the top, one lug of the hinge at the bottom. Slightly repatinated. H 88 mm (total) Austrian private collection, acquired on the European art market.

180



23 A BYZANTINE BRONZE CROSS PENDANT WITH CHRIST Circa 10th-12th century AD. The obverse shows Christ crucified with a small cross above his head. Above, the abbreviated Greek inscription HC XC NHKA, that reads (I)H(COY)C X(PICTO)C NHKA (Ἰησοῦς Χριστός νικᾷ = 'Jesus Christ conquers'). On the reverse, four stylised busts/heads, probably the four Evangelists or saints. In the centre, a small medallion with glass inlay. With suspension loop on top; remains of tinning. H 77 mm Acquired on the German art market between 2004-2010.

120



24 A MEDIEVAL GILT BRONZE CORPUS OF CHRIST Circa 12th-13th century AD. Expressive figure of crucified Christ from a processional cross. Christ is depicted with slim physique, wearing crown and perizonium (long loincloth), with his head leaning forward and slightly to the proper right side. Cast in the round, the back of the body flattened and hollowed out. Arms and legs broken; remains of a thick layer of gilding. H 87 mm Ex Austrian private collection Hofrat Dr. A. O., 1920-1994.

250



25 AN ANTIQUE MARBLE HAND FROM A STATUE Circa 16th-17th century AD. Finely modelled male hand holding an attribute/implement, from a well under-life-sized statue; with remains of drapery. Small part of the drapery broken off. Smooth but dark/stained surface. L 73 mm, H 65 mm Ex Austrian private collection Hofrat Dr. A. O., 1920-1994.

150



26 A ROMAN BRONZE CISTA FOOT IN THE FORM OF A SIREN Circa 1st-2nd century AD. The upper body is shaped in the form of a winged siren with incised feathers, emerging out of a calyx surmounting a lion's leg and paw. H 64 mm Ex European private collection, acquired on the German art market before 2000.

150



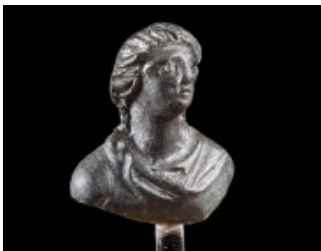
27 A ROMAN BRONZE STATUETTE OF A BULL Circa 2nd-3rd century AD. Statuette of a standing bull set on a profiled rectangular base; cast in one piece. Probably a votive bronze. The bull played an important role in several cults of the Roman East. H 45 mm From the collection of an Austrian art dealer, acquired on the European art market.

300



28 A ROMAN BRONZE THEATRE MASK APPLIQUE Circa 1st-3rd century AD. Applique in the form of a tragic theatrical mask; with open mouth, the back hollow. H 62mm Ex Austrian private collection, acquired in the 1980s-90s.

300



29 A ROMAN BRONZE BUST APPLIQUE OF A HERO Circa 1st-3rd century AD. Small bust of a Greek hero reminiscent of Alexander the Great. The head turned upwards, with long flowing hair. The bust is nude but for a cloak (chlamys). H 22 mm From the collection of an Austrian art dealer, acquired on the European art market.

180



30 A ROMAN BRONZE EAGLE ON A STAG'S HEAD Circa 1st-3rd century AD. A small bronze figurine of an eagle with its wings partly spread, perching on the head of a stag. Probably a votive bronze connected with the cult of Jupiter Dolichenus. H 35 mm From the collection of an Austrian art dealer, acquired on the European art market.

150



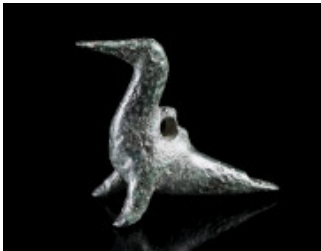
31 A BYZANTINE BRONZE MOUNT IN THE FORM OF A DOG Circa 6th-8th century AD. Mount in the form of a reclining dog with collar. With a loop for attachment underneath (damaged), a second loop missing. L 42 mm From the collection of an Austrian art dealer, acquired on the European art market.

35



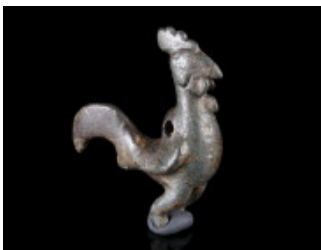
32 A ROMAN BRONZE LEG WITH SHOE AND TROUSERS Circa 2nd-3rd century AD. Probably from a statuette of a Barbarian. H 38 mm From the collection of an Austrian art dealer, acquired on the European art market.

40



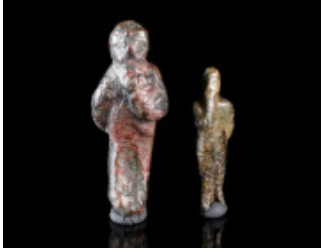
33 A GEOMETRIC BRONZE PENDANT OF A BIRD Circa 8th-7th century BC. Stylised bird with a long, pointed beak; with a suspension loop on the back of the body. Somewhat pitted surface. L 46 mm Ex European private collection, acquired on the German art market before 2000.

80



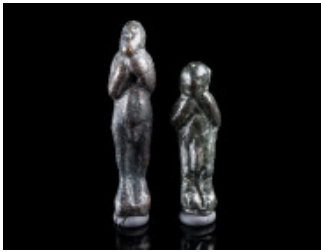
34 A ROMAN BRONZE PENDANT OF A ROOSTER Circa 2nd-3rd century AD. Figurine of a rooster with high crest and long tail feathers; with a suspension loop on the back of the body. H 39 mm From the collection of an Austrian art dealer, acquired on the European art market.

150



35 TWO ROMAN BRONZE AMULET PENDANTS DEPICTING HARPOKRATES Circa 2nd-3rd century AD. These small amulets are thought to depict Harpokrates, holding one hand to his mouth and the other to his back. Both with a suspension loop on the back (one loop unfinished). H 30 mm and 23 mm Ex European private collection, acquired on the German art market before 2000.

50



36 TWO ROMAN BRONZE FIGURAL AMULET PENDANTS Circa 2nd-3rd century AD. Both showing a male figure holding his hands to the chest/face. The genitals are prominently depicted; suspension loop on the back. H 31 mm, and H 25 mm Ex European private collection, acquired on the German art market before 2000.

50



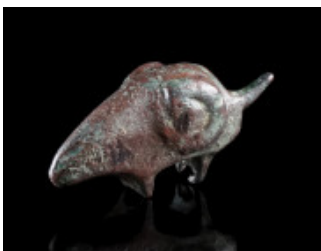
37 A SMALL ROMAN BRONZE FIGURE OF AN EAGLE Circa 2nd-3rd century AD. Perching eagle with folded wings, the feathers are indicated by deep grooves. L 31 mm Ex European private collection, acquired on the German art market before 2000.

50



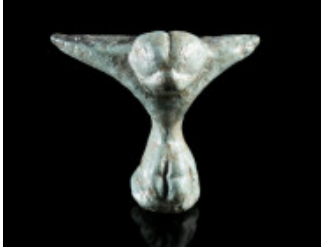
38 A SMALL ROMAN BRONZE BUST OF MINERVA Circa 2nd-3rd century AD. A highly stylised helmeted bust of probably Minerva, set on a bronze rod; likely part of a distaff (spinning tool). With incised decoration. H 83 mm Ex European private collection, acquired on the German art market before 2000.

35



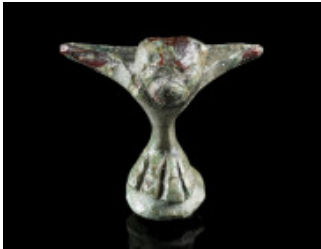
39 A LATE ANTIQUE/EARLY BYZANTINE BRONZE RAM'S HEAD MOUNT Circa 4th-7th century AD. Mount in the shape of a ram's head with two (partly broken) loops for attachment and a further broken suspension (?) loop. L 28 mm Ex European private collection, acquired on the German art market before 2000.

35



40 A ROMAN BRONZE ZOOMORPHIC CISTA FOOT Circa 1st-2nd century AD. Winged cista foot featuring the head and upper body of a panther surmounting a lion's leg and paw. H 31 mm Ex European private collection, acquired on the German art market before 2000.

40



41 A ROMAN BRONZE ZOOMORPHIC CISTA FOOT Circa 1st-2nd century AD. Winged cista foot featuring the head and upper body of a panther surmounting a lion's leg and paw. The feathers of the wings are indicated by a few incised lines. H 32 mm Ex European private collection, acquired on the German art market before 2000.

50



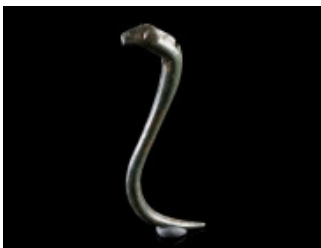
42 A ROMAN BRONZE HEAD OF A STATUETTE OF JUPITER Circa 2nd-3rd century AD. Jupiter, the supreme god of the Roman pantheon, is depicted with long beard and curly hair. H 18 mm Ex European private collection, acquired on the German art market before 2000.

35



43 A GREEK OR EARLY ROMAN BRONZE ATTACHMENT FROM A VESSEL Circa 2nd century BC - 1st century AD. Attachment in the shape of a lion's head (when seen from the front), composed of two deer's heads (seen from the side). H 27 mm Ex Austrian private collection D. B., acquired in the 1980s-90s.

30



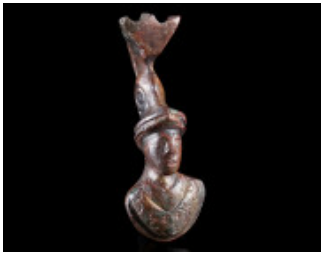
44 A ROMAN BRONZE FIGURINE OF A SERPENT Circa 2nd-3rd century AD. With pronounced eyes; pierced for attachment/suspension. H 54 mm From the collection of an Austrian art dealer, acquired on the European art market.

100



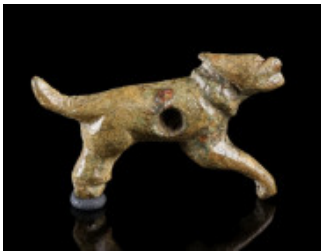
45 A SMALL ROMAN BRONZE BUST APPLIQUE OF A MALE Circa 2nd-3rd century AD. Stylised bust of a male wearing some kind of animal skin. Possibly a representation of a satyr? H 28 mm From the inventory of an Austrian art dealer, acquired on the European art market.

50



46 A ROMAN BRONZE BUST APPLIQUE OF MINERVA Circa 2nd-3rd century AD. The goddess is wearing tunic below a scaly aegis, and a high-crested Corinthian helmet, decorated with a volute on either side. Remains of a stud for attachment on the back. Cleaned. H 47 mm From the inventory of an Austrian art dealer, acquired on the European art market.

70



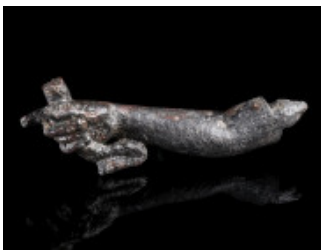
47 A SMALL ROMAN BRONZE FITTING IN THE FORM OF A DOG Circa 2nd-3rd century AD. Probably a belt fitting in the shape of a leaping dog with collar; centrally pierced for attachment. L 24 mm Ex Austrian private collection, acquired in the 1980s-90s.

30



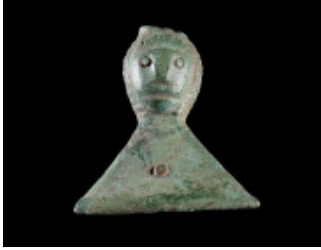
48 A PRE-ROMAN SILVER VOTIVE PLAQUE DEPICTING A GODDESS Circa 2nd-1st century BC. Rectangular plaque made of sheet metal, featuring the bust of a goddess with flowing hair within a square frame. H 39 mm, W 28 mm Ex Austrian private collection O. H., acquired between 1990-2010.

40



49 A ROMAN BRONZE RIGHT ARM FROM A STATUETTE Circa 1st-2nd century AD. Right arm, holding an implement/attribute (a bow?) in the hand, with outstretched index finger; with tenon for attachment to a statuette. L 72 mm Austrian private collection, acquired on the European art market.

80



50 A LATE ROMAN BRONZE BELT FITTING WITH A FACE Circa 4th-5th century AD. Belt fitting with a stylised human face; with rivet for attachment. Upper part missing. H 32 mm Austrian private collection, acquired on the European art market.

40



51 A ROMAN BRONZE PATRIX DIE WITH VENUS ANADYOMENE Circa 1st-2nd century AD. Patrix die (punch) depicting Venus wringing her hair, rising from a calyx. Venus Anadyomene ('Emerging from the Sea') is one of the iconic representations of the goddess. H 29 mm Austrian private collection, acquired on the European art market.

180



52 AN ETRUSCAN BRONZE BUCKLE WITH ANIMAL-HEADED HOOKS Circa 7th-6th century BC. Heavy buckle consisting of two pieces that would have been attached to either end of a belt. The two loops connect with two corresponding hooks in the form of animal heads. L 87 mm (total), W 59 mm Ex Austrian private collection Hofrat Dr. A. O., 1920-1994.

80



53 A ROMAN BRONZE CHEST HANDLE WITH TWO DOLPHINS Circa 1st-3rd century AD. Handle in the form of two facing dolphins, including the bronze mountings for attachment to the chest. With elaborate incised decoration. W 110 mm Ex Austrian private collection Hofrat Dr. A. O., 1920-1994.

120



54 AN ANCIENT BRONZE ADORNMENT IN THE SHAPE OF A BULL'S HEAD Circa 8th-6th century BC, based on style. Possibly originally from a vessel or some kind of implement. H 33 mm From the collection of an Austrian art dealer, acquired on the European art market.

60



55 A ROMAN DANUBIAN RIDER LEAD VOTIVE PLAQUE Circa 3rd-4th century AD. Rectangular 'Mystery Plaque' with twisted border and wavy top. In the wavy top section, a fish flanked by stars. Within the main field (from top to bottom): two snakes drinking (?) water flowing out of a krater with lid, flanked by busts of Sol (right) and Luna (left). In the main register, a facing goddess, flanked by two horsemen trampling on two prone men; behind them a standing figure wearing a ram-head mask (left), and a female figure (right). At the bottom, a sacrifice scene and further implements. Ertl Type F1, see: R. F. Ertl, *Donaureiter Bleivotivtafeln* (Petronell-Carnuntum 1996). Slightly bent but intact. H 92 mm, W 79 mm Austrian private collection, acquired on the European art market.

200



56 A ROMAN DANUBIAN RIDER LEAD VOTIVE PLAQUE WITH INCISIONS Circa 3rd-4th century AD. Left half of a rectangular 'Mystery Plaque' with twisted border. Same type as the plaque directly above (Ertl Type F1) but probably unique with incisions. Preserved is (from top to bottom): a snake drinking (?) water flowing out of a krater with lid and a bust of Luna. In the main register, a facing goddess and a horseman trampling on a prone man; behind the horseman a standing figure wearing a ram-head mask. At the bottom, a sacrifice scene and further implements. The outline of the horseman is highlighted by incisions! See: R. F. Ertl, *Donaureiter Bleivotivtafeln* (Petronell-Carnuntum 1996). Slightly bent. H 87 mm, W 46 mm Austrian private collection, acquired on the European art market.

100



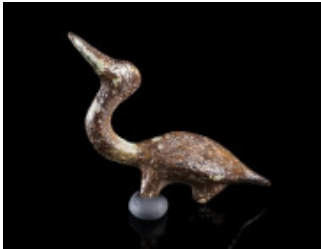
57 A MINIATURE ROMAN DANUBIAN RIDER LEAD VOTIVE PLAQUE Circa 3rd-4th century AD. Unpublished and unique miniature rectangular 'Mystery Plaque'. Depicted are (from top to bottom): stars flanked by busts of Sol (left) and Luna (right). In the main register, a facing goddess, flanked by two horsemen trampling on two prone men. Below the goddess, a tripod; to the left, a sacrifice scene, to the right and below the tripod, further figures and ritual implements. For the iconography see: R. F. Ertl, *Donaureiter Bleivotivtafeln* (Petronell-Carnuntum 1996). H 42 mm, W 36 mm Ex Austrian private collection, acquired in the 1980s-90s.

150



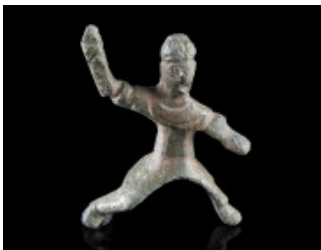
58 AN ARCHAIC BRONZE ATTACHMENT IN THE SHAPE OF A BULL Circa 9th-7th century BC. Bull protome, pierced for attachment and with a further suspension loop below. H 42 mm Austrian private collection, acquired on the European art market.

120



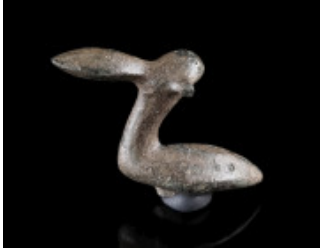
59 A EUROPEAN LATE BRONZE AGE FIGURINE OF A BIRD Circa 12th-9th century BC. Small bronze figurine in the shape of a duck, with a loop for attachment (partly broken). L 40 mm Ex Austrian private collection, acquired in the 1980s-90s.

40



60 A ROMAN BRONZE STATUETTE OF A THRACIAN HORSEMAN Circa 2nd-3rd century AD. The hero with long hair tied into a knot is shown with cuirass and cloak over his shoulder, his right arm raised, and the left held out. H 41 mm Austrian private collection, acquired on the European art market.

80



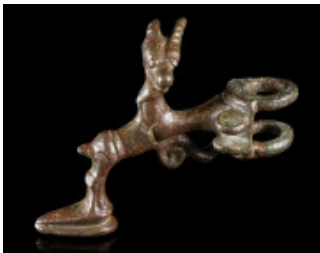
61 A EUROPEAN LATE BRONZE AGE FIGURINE OF A BIRD Circa 12th-9th century BC. Small bronze figurine in the shape of a duck with horns; remains of a stud for attachment at the bottom. L 31 mm Ex European private collection, acquired on the German art market before 2010.

40



62 TWO EUROPEAN LATE BRONZE AGE BIRD FIGURINES Circa 12th-9th century BC. Small bronze figurines in the shape of a bird; one with a stud for attachment at the bottom. L 37 mm, and L 20 mm Ex European private collection, acquired on the German art market before 2010.

40



63 A LURISTAN BRONZE FIGURE OF AN IBEX Circa 9th-8th century BC. Figure of an ibex, with the hind legs set on a small base. Two large loops and a further small loop attached to the forelegs; a volute underneath. Probably part of a larger object/implement. Horns of ibex partly missing. L 94 mm and H 80 mm Austrian private collection, acquired on the European art market.

250



64 A ROMAN BRONZE APPLIQUE IN THE FORM OF A SHELL Circa 1st-3rd century AD. Applique in the shape of a scallop, with a stud for attachment on the back. L 24 mm Ex European private collection, acquired on the German art market before 2000.

35



65 A ROMAN BRONZE FOOT OF A STATUETTE Circa 1st- 3rd century AD. A (partly) hollow cast foot of a statuette. The proportions suggest that it belonged to a figure of Eros or a child. L 28 mm From the collection of an Austrian art dealer, acquired on the European art market.

30



66 A ROMAN APPLIQUE IN THE FORM OF THE HEAD OF A BARBARIAN Circa 2nd-3rd century AD. Applique with hollow reverse depicting a balding Barbarian with long pointed beard. The hair on the head is indicated by crescent-shaped punches/incisions, the beard by deeply engraved wavy lines. An incised (palm) branch on the forehead, and a short, abbreviated inscription on the proper right side. Originally attached to a larger object (remains of solder) and punched/pierced at some point. L 58 mm, H 23 mm From the collection of an Austrian art dealer, acquired on the European art market.

180



67 A ROMAN LEAD VOTIV OFFERING DEPICTING A MALE FIGURE Circa 1st-3rd century AD. Lead votive offering featuring a nude male figure standing in contrapposto, holding an object/attribute in the right hand; a further undefined object in the left field. H 30 mm From the collection of an Austrian art dealer, acquired on the European art market.

50



68 A ROMAN BRONZE FURNITURE FOOT WITH A LION Circa 1st-3rd century AD. Large furniture foot featuring the head and upper body of a lion surmounting a lion's leg and paw on a round base. With a square fitting at the top for attachment; some remains of engraved decoration. H 12.9 cm Austrian private collection, acquired on the European art market.

220



69 A SELJUK BRONZE CASKET FOOT WITH A LION'S HEAD Circa 11th-13th century AD. With a stylised lion's head with pointed ears and open mouth. The foot terminates in a moulded ornament resembling a pinecone. H 63 mm Ex European private collection, acquired on the German art market before 2000.

50



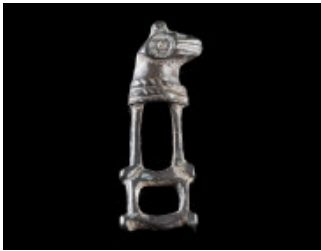
70 A BYZANTINE BRONZE FIGURAL CLASP Circa 8th-12th century AD. Clasp with a stylised figure; incised and punched decoration. L 37 mm Ex European private collection, acquired on the German art market before 2000.

50



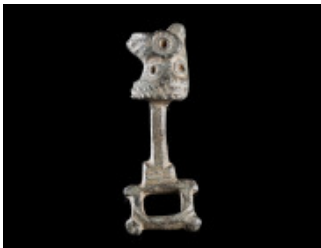
71 A BYZANTINE BRONZE FIGURAL CLASP Circa 8th-12th century AD. Clasp with two stylised figures; incised/punched decoration. L 30 mm Austrian private collection, acquired on the European art market.

65



72 A BYZANTINE BRONZE CLASP WITH A HORSE HEAD Circa 8th-12th century AD. Clasp with a stylised horse head to right; incised and punched decoration. L 40 mm Austrian private collection, acquired on the European art market.

70



73 A BYZANTINE BRONZE CLASP WITH A HORSE HEAD Circa 8th-12th century AD. Clasp with a stylised horse head to left; incised and punched decoration. L 41 mm Austrian private collection, acquired on the European art market.

70



74 A MEDIEVAL SILVER GILT FINAL WITH A LION/GRIFFIN Circa 12th-14th century AD. Possibly the final of a knife handle depicting a striding lion or griffin with his head turned back; pierced twice for attachment. L 29 mm Austrian private collection, acquired on the European art market.

95



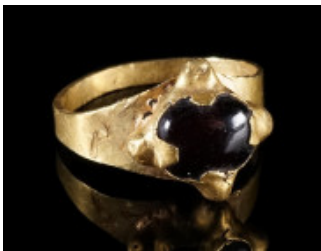
75 A MEDIEVAL BRONZE FITTING WITH A GRIFFIN Circa 13th-14th century AD. Fitting with a griffin (?) within a beaded border; made of sheet metal. Pierced twice, probably for attachment to a strap or belt. Diameter 17 mm Ex European private collection, acquired on the German art market before 2000.

40



76 A BRONZE HANDLE WITH DOG AND BULL Circa 16th-18th century AD. Handle with a bull's head and a dog in high relief on top/behind it on either side at one end. The other end with a square fitting, pierced on the sides. Remains of an iron rivet behind the dog's tail. L 94 mm From the collection of an Austrian art dealer, acquired on the European art market.

50



77 A MEDIEVAL GOLD RING WITH A GARNET Circa 10th century AD. Ring with a garnet cabochon in a claw setting. Bezel partly crushed (deformed) and repaired. Ring size 73 (EU); Gold! 7.99 g Ex European private collection, acquired on the German art market before 2010.

1'600



78 A EUROPEAN BRONZE AGE TWISTED GOLD RING Circa 12th-9th century BC. Ring made from twisted gold wire. Diameter 34 mm; Gold! 2.83 g Ex European private collection, acquired on the German art market before 2010.

340



79 A EUROPEAN BRONZE AGE TWISTED GOLD RING Circa 12th-9th century BC. Ring made from twisted gold wire. Diameter 23 mm; Gold! 2.11 g Ex European private collection, acquired on the German art market before 2010.

250



80 A EUROPEAN BRONZE AGE TWISTED GOLD RING Circa 12th-9th century BC. Ring made from twisted gold wire. Diameter 35 mm; Gold! 2.81 g Ex European private collection, acquired on the German art market before 2010.

340



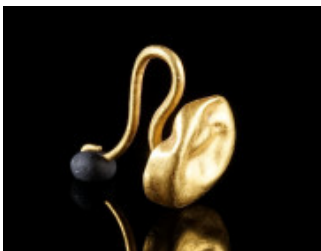
81 TWO EUROPEAN BRONZE AGE GOLD RINGS Circa 12th-10th century BC. Two rings made from gold wire. Both with tapering ends; one square in section. Diameter 20 and 21 mm (max.); Gold! 3.62 g (together) Ex European private collection, acquired on the German art market before 2010.

430



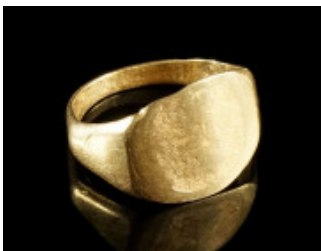
82 A PAIR OF ROMAN GOLD EARRINGS WITH MEDUSA CAMEOS Circa 2nd-3rd century AD. Matching pair of earrings composed each of a finely bordered medallion with a cameo featuring a head of Medusa in three-quarter view. Hook-and-loop fastener at the back of both pieces damaged/broken; one cameo cracked. H 13 mm each; Gold! 2.54 g (together) Ex Austrian private collection O. H., acquired between 1990-2010.

180



83 A ROMAN GOLD SHIELD EARRING Circa 1st-2nd century AD. Earring in the shape of a convex circular shield. S-shaped hook at the back. Somewhat crushed. H 17 mm (total), Diameter 12 mm; Gold! 1.54 g From the collection of an Austrian art dealer, acquired on the European art market.

80



84 A PLAIN ROMAN GOLD RING Circa 2nd-3rd century AD. The separately attached bezel is not preserved. Top of the ring slightly roughened up in antiquity for soldering. Ring size 53 (EU); Gold! 4.26 g Ex Austrian private collection O. H., acquired between 1990-2010.

280



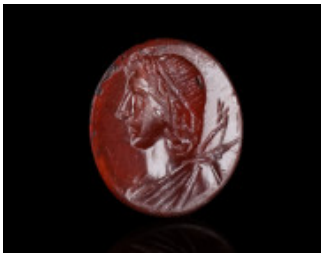
85 A ROMAN CARNELIAN INTAGLIO WITH A YOUNG BULL Circa 1st century AD. Skilfully carved oval intaglio depicting a striding young bull to right and a tree. L 14 mm Inventory of an Austrian art dealer. Form an old German collection.

340



86 A ROMAN SARD INTAGLIO WITH A FEMALE PORTRAIT BUST Circa late 2nd - early 3rd century AD. Oval intaglio featuring the bust of a draped woman with a fashionable hairstyle. H 10 mm Inventory of an Austrian art dealer. Form an old German collection.

180



87 A ROMAN CARNELIAN INTAGLIO DEPICTING A BUST OF APOLLO Circa 1st-3rd century AD. Attractive and skilfully carved oval intaglio showing a draped bust of Apollo with bow and quiver to left; minor iron deposits on the edges suggest that the gem was once set into an iron ring. H 11 mm Acquired on the UK art market.

200



88 A ROMAN NICOLO INTAGLIO DEPICTING BONUS EVENTUS Circa 2nd-3rd century AD. Oval banded agate (black/blue) intaglio depicting Bonus Eventus standing facing, head to right. The divine personification is shown nude but for a cloak, probably holding fruits and ears of corn. H 9 mm From the collection of an Austrian art dealer, acquired on the European art market.

180



89 A ROMAN SILVER RING WITH A CARNELIAN INTAGLIO Circa 1st-2nd century AD. Solid silver ring with an oval carnelian intaglio depicting a nude male bust with a sceptre (?) to left. With some calcareous deposits on the top and the shoulders. Ring size 51 (EU); outer diameter 27 mm (max.) Austrian private collection, acquired on the European art market.

350



90 A ROMAN GILT BRONZE RING WITH A CARNELIAN INTAGLIO Circa 2nd-3rd century AD. Delicate ring with offset shoulders; the raised bezel is set with an oval intaglio depicting a conch. Ring size 45 (EU) From the collection of an Austrian art dealer, acquired on the European art market.

100



91 A ROMAN CARNELIAN INTAGLIO DEPICTING MINERVA Circa 1st-3rd century AD. Oval intaglio with the helmeted and draped goddess standing to right, holding spear and shield with her right hand, and a small statuette of Victory in her left. Somewhat worn surface, with a minor chip on the left edge and some earthen deposits. H 12 mm Acquired on the UK art market.

50



92 A ROMAN SARD INTAGLIO DEPICTING MINERVA Circa 2nd-3rd century AD. Silver bezel from a small ring with an oval intaglio featuring Minerva with spear and shield standing to left. Some earthen deposits. H 10 mm (intaglio); L 13 mm (total) Ex European private collection, acquired on the German art market before 2000.

50



93 A ROMAN INTAGLIO DEPICTING MINERVA Circa 2nd-3rd century AD. Octagonal intaglio featuring the helmeted goddess Minerva with spear and shield standing to left. Gemstone discoloured; some cracks and minor chips. H 12 mm Ex European private collection, acquired on the German art market before 2000.

50



94 A BEZEL FROM A ROMAN BRONZE RING WITH A CARNELIAN INTAGLIO Circa 2nd-3rd century AD. Top part of a small ring with an oval intaglio depicting a stylised modius with probably ears of corn. H 9 mm (intaglio); L 18 mm (total) Ex European private collection, acquired on the German art market before 2000.

50



95 A ROMAN GOLD PENDANT WITH A HEXAGONAL EMERALD Circa 2nd-3rd century AD. Pendant with suspension loop from a Roman gold earring. H 19 mm (total), diameter 8 mm (emerald); Gold! 0.85 g Ex Austrian private collection, acquired in the 1980s-90s.

80



96 A ROMAN BRONZE RING WITH A CARNELIAN INTAGLIO Circa 1st-2nd century AD. Ring with an oval intaglio depicting a hand with a string (?) around it. Possibly a memento of love. Ring size 49 (EU); L 10 mm (intaglio) Ex Austrian private collection, acquired in the 1980s-90s.

100



97 A HEAVY GOLD THORN FROM A MIGRATION PERIOD BUCKLE Circa 5th-6th century AD. Thorn from a very heavy gold buckle. L 26 mm; Gold! 7.43 g Ex Austrian private collection O. H., acquired between 1990-2010.

480



98 A ROMAN SILVER RING WITH ASCLEPIUS AND SALUS Circa 2nd-3rd century AD. Silver ring with a Carnelian intaglio depicting a stylised representation of Asclepius with serpent-entwined rod and Salus standing facing each other. Ring broken and intaglio discoloured; the ring was probably exposed to fire in antiquity. H 11 mm (intaglio); outer diameter of ring 22 mm (max.) Ex Austrian private collection, acquired in the 1980s-90s.

50



99 A EUROPEAN BRONZE AGE GOLD SPIRAL Circa 12th-9th century BC. Made from a continuous loop of gold wire doubled up and bent into a spiral. H 35 mm; Gold! 15.72 g Ex European private collection, acquired on the German art market before 2010.

1'800



100 A EUROPEAN BRONZE AGE GOLD SPIRAL Circa 12th-9th century BC. Made from a continuous loop of gold wire doubled up and bent into a spiral. H 45 mm; Gold! 13.89 g Ex European private collection, acquired on the German art market before 2010.

1'600



101 A EUROPEAN BRONZE AGE GOLD SPIRAL Circa 12th-9th century BC. Made from a continuous loop of gold wire doubled up and bent into a spiral. H 42 mm; Gold! 16.16 g Ex European private collection, acquired on the German art market before 2010.

1'900



102 A GREEK SILVER HAIR SPIRAL Circa 5th-4th century BC. Heavy hair spiral formed from thick silver wire, ribbed towards the ends; the terminals decorated with pyramidal knobs with profiled ends. With horn silver deposits, crystallised silver at some spots. L 35 mm (max.); 11.55 g From the collection of an Austrian art dealer, acquired on the European art market.

30



103 A PAIR OF GREEK SILVER OMEGA EARRINGS Circa late 6th-5th century BC. Matching pair of earrings, taking their name from a similarity to the Greek letter omega. The plain metal rod expands into an open hoop; the ends are turned upwards and terminate in pyramidal knobs with incised decoration. H 29 and 31 mm Ex Austrian private collection O. H., acquired between 1990-2010.

100



104 A MEDIEVAL OR EARLY MODERN FIGURATIVE ORNAMENT Circa 15th-16th century AD. Gilt bronze ornament with a female and a male figure standing facing each other. Set with a garnet (a second stone missing); three small loops for attachment/connection. Possibly part of a girdle belt. H 27 mm Ex Austrian private collection, acquired in the 1980s-90s.

120



105 A HEAVY ROMAN SILVER RING Circa 2nd-3rd century AD. Ring with flared shoulders and a raised oval setting for an intaglio. Ring size 51 (EU); 24.92 g Ex Austrian private collection O. H., acquired between 1990-2010.

80



106 A ROMAN BRONZE RING WITH A LION Circa 3rd century AD. Ring with offset shoulders and a projecting oval bezel engraved with a lion striding left. Ring size 48 (EU) From the collection of an Austrian art dealer, acquired on the European art market.

90



107 A LATE ROMAN BRONZE RING WITH AN EMPEROR Circa 4th century AD. Ring with projecting round bezel depicting the bust of an emperor with sceptre, crowned by Victory. Ring size 62 (EU) Ex European private collection, acquired on the German art market before 2000.

80



108 A ROMAN SILVER RING Circa 3rd century AD. Ring with faceted and angled shoulders and a projecting round bezel. Ring size 49 (EU) From the collection of an Austrian art dealer, acquired on the European art market.

100



109 A LATE ROMAN BRONZE RING WITH AN ANTILOPE Circa 4th century AD. Ring with raised circular bezel depicting a resting antelope to left. Ring size 60 (EU) Ex European private collection, acquired on the German art market before 2000.

80



110 A ROMAN GILT BRONZE RING WITH A BUST OF ROMA Circa 2nd century AD. Ring with flared shoulders and a raised oval bezel depicting a bust of Roma to right. Ring size 46 (EU) Austrian private collection, acquired on the European art market.

250



111 A LATE MEDIEVAL OR EARLY MODERN SILVER RING Circa 15th-16th century AD. Ring with an oval bezel engraved with a cross and four stars in the fields, framed by an elaborate border. The shoulders with incised decoration. Ring size 62 (EU) Ex Austrian private collection, acquired in the 1980s-90s.

80



112 A ROMAN BRONZE RING WITH A LION Circa 2nd century AD. Ring with flat oval bezel engraved with a leaping lion to left, above a crescent. Ring size 52 (EU) Ex European private collection, acquired on the German art market before 2000.

80



113 AN EARLY BYZANTINE BRONZE MONOGRAM RING Circa 6th-7th century AD. Delicate ring with a projecting round bezel engraved with a monogram and a cross above. With some earthen deposits. Ring size 52 (EU) Austrian private collection, acquired on the European art market.

60



114 A BYZANTINE SILVER RING WITH DECORATION Circa 6th-8th century AD. Ring with lozenge-shaped bezel and granulated decoration to the sides; the bezel engraved with a stylised animal (?). Ring size 55 (EU) Ex European private collection, acquired on the German art market before 2000.

80



115 A ROMAN BRONZE RING WITH JUNO Circa 2nd century AD. Ring with oval bezel depicting Juno standing to left with sceptre and patera. The hoop with a deep cut towards the bezel on one side. Ring size 58 (EU) Ex European private collection, acquired on the German art market before 2000.

80



116 A ROMAN SILVER RING WITH TWO STYLISED DOLPHINS Circa 2nd-3rd century AD. Ring with the bezel formed of two stylised facing dolphins. Ring size 53 (EU) Ex Austrian private collection D. B., acquired in the 1980s-90s.

40



117 LATE ANTIQUE/EARLY BYZANTINE BRONZE RING WITH A DOVE Circa 4th-6th century AD. Ring with round bezel depicting a dove with spread wings between two branches; remains of silvering on the bezel. Ring size 55 (EU) Ex European private collection, acquired on the German art market.

50



118 A ROMAN BRONZE RING WITH AN EAGLE Circa 2nd-3rd century AD. Ring with an oval bezel engraved with a perched eagle to left, its wings partly spread and a wreath in its beak. Ring size 58 (EU) Ex European private collection, acquired on the German art market before 2000.

80



119 A MEDIEVAL BRONZE RING WITH ORNAMENTAL DESIGN Circa 14th-15th century AD. With a deeply engraved oval bezel. Ring size 56 (EU) Ex European private collection, acquired on the German art market.

50



120 A ROMAN BRONZE RING WITH CERES/FORTUNA Circa 2nd century AD. Ring with flared shoulders and a slightly raised oval bezel depicting Ceres/Fortuna to right with cornucopia, rudder, and ears of grain. Ring size 44 (EU) From the collection of an Austrian art dealer, acquired on the European art market.

90



121 A LATE ANTIQUE BRONZE RING DEPICTING EROS WITH BOW Circa 4th-5th century AD. Delicate ring with round bezel depicting a stylised figure of winged Eros with bow advancing right. Ring size 54 (EU) Ex European private collection, acquired on the German art market before 2000.

35



122 A ROMAN BRONZE RING WITH A LION Circa 2nd-3rd century AD. Ring with oval bezel engraved with a striding lion to left. Ring size 44 (EU) Ex European private collection, acquired on the German art market before 2000.

35



123 AN EARLY MODERN BRONZE RING WITH A FLEUR-DE-LIS Circa 16th century AD. Ring with oval bezel engraved with a Fleur-de-Lis, framed by a dotted border. Ring size 55 (EU) Ex European private collection, acquired on the German art market before 2000.

80



124 A SILVER RING WITH INSCRIPTION Circa 17th-18th century AD. Ring with a projecting circular bezel with a cross and an inscription in two lines (name). The hoop with incised decoration. Ring size 59 (EU) Ex European private collection, acquired on the German art market before 2000.

80



125 A LATE MEDIEVAL OR EARLY MODERN BRONZE RING Circa 15th-16th century AD. Ring with an oval bezel engraved with an ornamental design. Ring size 56 (EU) Ex European private collection, acquired on the German art market.

50



126 A ROMAN SILVER RING Circa 3rd century AD. Ring with slightly flared and angled shoulders and a projecting round bezel with a punched design. Ring size 51 (EU) Ex European private collection, acquired on the German art market before 2000.

35



127 A LATE MEDIEVAL OR EARLY MODERN BRONZE RING Circa 15th-16th century AD. Ring with an oval bezel engraved with an ornamental design. Ring size 58 (EU) Ex European private collection, acquired on the German art market before 2000.

30



128 A MEDIEVAL SILVER GILT RING WITH CLASPED HANDS Circa 14th-15th century AD. Ring with the bezel formed of two clasped hands, the fingers indicated by engraved lines. The hands joined symbolise the love and faith between two people. Fede (Italian word for 'faith') rings were popular from the 12th century onward. Ring size 52 (EU) Ex Austrian private collection D. B., acquired in the 1980s-90s.

40



129 A SILVER RING WITH INSCRIPTION Circa 17th-18th century AD. Ring with a projecting circular bezel with a cross and an inscription in two lines (name and date?). The hoop with incised decoration. Ring size 53 (EU) Ex European private collection, acquired on the German art market before 2000.

50



130 A LATE MEDIEVAL SILVER RING WITH ORNAMENTAL DECORATION Circa 15th century AD. With an octagonal bezel with engraved design. Ring size 55 (EU) Ex European private collection, acquired on the German art market.

65



131 A ROMAN BRONZE RING WITH A STAG Circa 2nd-3rd century AD. Ring with a rounded hexagonal bezel depicting a stag standing to left. Ring size 57 (EU) Ex European private collection, acquired on the German art market before 2000.

80



132 AN EARLY MODERN SILVER RING Circa 16th century AD. Ring with projecting round bezel; the bezel and the shoulders decorated with a geometric design. Ring size 59 (EU) Ex European private collection, acquired on the German art market before 2000.

80



133 LATE ROMAN BRONZE RING WITH DECORATION Circa 4th century AD. Ring with projecting round bezel probably depicting sea creatures. Hoop somewhat bent. Ring size 54 (EU) Ex European private collection, acquired on the German art market before 2000.

35



134 A GREEK BRONZE RING WITH DECORATION Circa 3rd-1st century BC. Ring with oval bezel with incised figural decoration. Ring size 57 (EU) Ex European private collection, acquired on the German art market before 2000.

80



135 A LATE ROMAN RING WITH AN EARLY CHRISTIAN MONOGRAM Circa 4th century AD. Bronze ring with rectangular bezel featuring an IX monogram formed of the Greek letters I (Iota) and X (Chi), standing for Iesous Christos (Ιησους Χριστος). Framed by a beaded border. Ring size 58 (EU) Ex European private collection, acquired on the German art market.

50



136 A MEDIEVAL SILVER RING WITH A SWASTIKA Circa 9th-12th century AD. Ring with oval bezel with an engraved 'winged' Swastika within a navette-shaped double border. With some earthen deposits. Ring size 53 (EU) Austrian private collection, acquired on the European art market.

120



137 A LATE MEDIEVAL OR EARLY MODERN BRONZE RING Circa 15th-16th century AD. With a rectangular bezel with ornamental decoration. Ring size 58 (EU) Ex European private collection, acquired on the German art market before 2000.

50



138 A ROMAN BRONZE RING WITH AN ANTILOPE Circa 3rd century AD. Ring with faceted and angled shoulders and a projecting oval bezel depicting a resting antelope to left. Ring size 53 (EU) Ex European private collection, acquired on the German art market before 2000.

80



139 A ROMAN BRONZE RING WITH FORTUNA, VICTORY, AND MINERVA Circa 2nd century AD. Ring with flared shoulders and a slightly raised oval bezel depicting Fortuna with cornucopia and rudder in the centre, flanked by Minerva with sceptre and shield (right) and Victory with wreath (left). Ring size 48 (EU) From the collection of an Austrian art dealer, acquired on the European art market.

30



140 A MEDIEVAL SILVER RING WITH AN EAGLE Circa 9th-12th century AD. Ring with round bezel decorated with a facing eagle, head to left. A star to the right. Ring size 50 (EU) Ex Austrian private collection D. B., acquired in the 1980s-90s.

80



141 A GROUP OF TWO ROMAN AND A MEDIEVAL BRONZE RING Circa 2nd, and 4th century AD; and 15th century AD. A Roman ring with Victory, and a late Roman ring with zoomorphic decoration; and a late medieval ring with a stylised lion (?). Ring size 49-58 (EU) Ex Austrian private collection, acquired in the 1980s-90s.

60



142 TWO LATE MEDIEVAL / EARLY MODERN BRONZE RINGS Circa 15th-16th century AD. One with a projecting round bezel, the other with an oval bezel; both decorated. Ring size 57, and 54 (EU) Ex European private collection, acquired on the German art market before 2000.

50



143 TWO LATE MEDIEVAL / EARLY MODERN BRONZE RINGS Circa 15th-16th century AD. One with a projecting round bezel, the other with an oval bezel; both decorated. Both ring size 59 (EU) Ex European private collection, acquired on the German art market before 2000.

50



144 TWO LATE MEDIEVAL / EARLY MODERN BRONZE RINGS Circa 15th-16th century AD. One with a projecting round bezel, the other with an oval bezel; both decorated with an ornamental design. Ring size 61, and 54 (EU) Ex European private collection, acquired on the German art market before 2000.

50



145 TWO LATE MEDIEVAL / EARLY MODERN BRONZE RINGS Circa 15th-16th century AD. One with a round bezel, the other with an oval bezel; both decorated. Ring size 56, and 48 (EU) Ex European private collection, acquired on the German art market before 2000.

50



146 A ROMAN BRONZE RING AND AN EARLY MODERN BRONZE RING Circa 2nd-3rd century AD, and 16th century AD. A Roman 'double' ring with a (blundered?) inscription, and a ring with an oval bezel with decoration. Ring size 47, and 55 (EU) Ex European private collection, acquired on the German art market before 2000.

50



147 TWO LATE MEDIEVAL / EARLY MODERN BRONZE RINGS Circa 14th-16th century AD. One with an oval bezel, the other with a navette-shaped bezel; both decorated. Ring size 59, and 56 (EU) Ex European private collection, acquired on the German art market before 2000.

50



148 A ROMAN BRONZE RING AND A LATE MEDIEVAL BRONZE RING Circa 2nd-3rd century AD, and 15th century AD. A Roman ring with oval bezel engraved with an abbreviated inscription, and a decorated Medieval ring with a small oval bezel. Hoop of the Roman ring with a crack/break. Ring size 46, and 50 (EU) Ex European private collection, acquired on the German art market before 2000.

50



149 A GROUP OF FOUR MEDIEVAL/EARLY MODERN BRONZE RINGS Circa 12th-16th century AD. Various designs and decorations; one with coloured cabochon glass stone in a claw setting. Ring size 50-58 (EU) Ex Austrian private collection O. H., acquired between 1990-2010.

50



150 A BYZANTINE BRONZE CROSS PENDANT WITH VIRGIN MARY Circa 10th-12th century AD. Small pendant probably featuring Virgin Mary with her hands upraised in prayer ('orans'); a blundered inscription above. Suspension loop missing. H 39 mm Acquired on the German art market between 2004-2010.

30



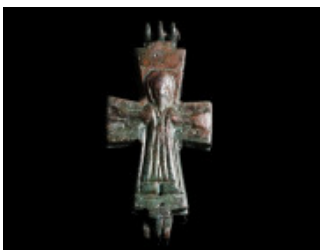
151 A LARGE BYZANTINE BRONZE CROSS PENDANT Circa 10th-12th century AD. The cross arms are in the corners further embellished with small 'disks' (one partly broken). Decorated with punched ring-and-dot motifs; the large ring-and-dot-motifs probably symbolising the Five Wounds of Christ. With suspension loop on top. H 89 mm Austrian private collection, acquired on the European art market.

120



152 A BYZANTINE BRONZE CROSS WITH MARY AND THE EVANGELISTS Circa 10th-12th century AD. One half of a reliquary cross (enkolpion) depicting Virgin Mary with her hands upraised in prayer ('orans'), flanked by busts of the four Evangelists. To the sides of Mary (barred) MP - ΘV (MHTHP ΘEOY - Mother of God). In the corners (clockwise): M (Mathew), I (John), M (Mark), and Λ (Luke). H 86 mm, W 54 mm Private property, acquired on the European art market.

150



153 A BYZANTINE BRONZE RELIQUARY CROSS WITH CHRIST AND MARY Circa 10th-12th century AD. Small reliquary cross (enkolpion) depicting Christ crucified on one side, and Virgin Mary with her hands upraised in prayer ('orans') on the other. Suspension loop missing. H 46 mm Ex European private collection, acquired on the German art market before 2000.

80



154 A ROMAN BRONZE PHALLIC AMULET PENDANT Circa 2nd-3rd century AD. A groove from back to front on the underside of the phallus; with a large loop for suspension. These amulets (fascina) were thought to bring good luck and ward off evil spirits. L 27 mm From the collection of an Austrian art dealer, acquired on the European art market.

90



155 A ROMAN BRONZE PHALLIC AMULET PENDANT Circa 2nd-3rd century AD. With a pointed tip representing the foreskin and a ridge from back to front on the underside of the phallus. With a loop for suspension. These amulets (fascina) were thought to bring good luck and ward off evil spirits. L 33 mm From the collection of an Austrian art dealer, acquired on the European art market.

80



156 A ROMAN SILVER BULLA (AMULET) Circa 1st-3rd century AD. Hollow domed on either side, forming an internal compartment; with suspension loop. Broken and repaired (glued) right below the suspension loop on one side. A bulla is a locket that especially Roman boys wore to protect them and ward off evil spirits until they reached adulthood. Inside the bulla were placed small amulets or fragments of sacred items. H 20 mm Austrian private collection, acquired on the European art market.

60



157 TWO ROMAN BRONZE PENDANTS TERMINATING IN A HOOF Circa 2nd-3rd century AD. Pendants with suspension loop, the lower ends in the shape of a hoof. Similar pendants are known from Roman military belts. H 39 mm, and H 41 mm Ex Austrian private collection D. B., acquired in the 1980s-90s.

30



158 TWO ROMAN SILVER PENDANTS Circa 1st century AD. A Celto-Roman silver axe pendant with a hole for suspension. And a pendant in the shape of a stylised hand (fingers indicated by incisions) with suspension loop. L 13 mm (axe), and H 20 mm (hand) Ex Austrian private collection D. B., acquired in the 1980s-90s.

30



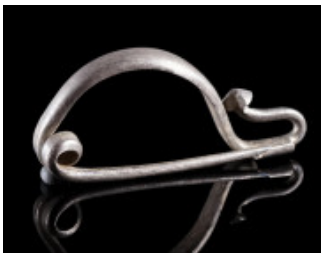
159 AN EARLY THRACIAN SILVER FIBULA OF THE 'THESSALIAN TYPE' Circa 6th century BC. Richly decorated bow brooch with trapezoid catch-plate. The foot terminates in a small conical knob. With incised and punched decoration. Made of one piece with spring and pin. L 40 mm Ex European private collection, acquired on the art market between circa 2000-2018.

350



160 AN IRON AGE/EASTERN CELTIC SILVER BOW FIBULA Circa 4th-3rd century BC. Thracian Type fibula. Made of one piece with spring and pin; the foot terminates in a decorated conical knob. Nice dark toning. L 40 mm Ex European private collection, acquired on the art market between circa 2000-2018.

200



161 AN IRON AGE/EASTERN CELTIC SILVER BOW FIBULA Circa 4th-3rd century BC. Thracian Type fibula. Made of one piece with spring and pin; the foot terminates in a faceted conical knob. Nicely toned. L 41 mm Ex European private collection, acquired on the art market between circa 2000-2018.

200



162 AN ELABORATE EARLY ROMAN SILVER-GILT AUCISSA FIBULA Circa 1st century AD. A richly decorated silver-gilt fibula with divided bow with knobs on the sides ('Bagendon Fibula'). The head plate is decorated with a wolf-head protome; a further stylised wolf-head adorns the foot that terminates in a large spherical knob. Encrusted with hornsilver; cleaning scratches. One knob missing, one detached. Probably unique! For the type in general, see E. Riha, *Die römischen Fibeln aus Augst und Kaiseraugst* (Augst 1979), Type 5.4. L 48 mm Ex European private collection, acquired on the art market between circa 2000-2018.

250



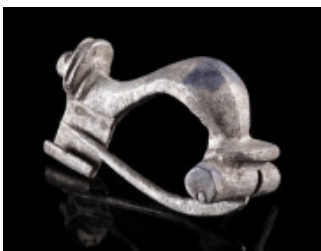
163 A ROMAN SILVER ANCHOR-TYPE BROOCH WITH INSCRIPTION Circa 2nd-3rd century AD. Nicely toned bow brooch with an anchor-shaped head. The foot terminates in a large globular knob. The triangular catch-plate with an incised Roman cursive inscription in two lines. With spring and pin, spring bent. Some scratches; minor deposits. L 48 mm Ex European private collection, acquired on the art market between circa 2000-2018.

200



164 A MAGNIFICENT ROMAN SILVER HARE AND HOUND BROOCH Circa 2nd-3rd century AD. Detailed openwork plate brooch. The brooch shows in high relief a hound with collar hunting a hare. The eyes are punched, the fur is indicated by short incisions. With hinged pin. One lug of the hinge had broken in antiquity and was repaired with a rivet (rivet visible on the hind leg of the hound). Slightly rough and worn surface with some deposits. L 37 mm Ex European private collection, acquired on the art market between circa 2000-2018.

450



165 A ROMAN SILVER KNEE BROOCH Circa 2nd-3rd century AD. With faceted bow and small semicircular head plate. Hinged pin. L 32 mm Ex European private collection, acquired on the art market between circa 2000-2018.

150



166 A ROMAN SILVER KNEE BROOCH Circa 2nd-3rd century AD. With faceted bow and small semicircular head plate. Hinged pin. Somewhat rough surface. L 25 mm Ex European private collection, acquired on the art market between circa 2000-2018.

200



167 A ROMAN SILVER OPENWORK TRUMPET BROOCH Circa 2nd-3rd century AD. Fine and nicely toned plate brooch with a complex Celtic trumpet-style design. The hinged pin is loose but certainly belongs. Minor deposits. L 36 mm Ex European private collection, acquired on the art market between circa 2000-2018.

300



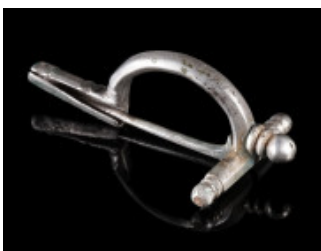
168 AN ELABORATE ROMAN SILVER BROOCH WITH PENDANTS Circa 2nd-3rd century AD. Trumpet brooch with three leaf-shaped pendants, suspended with intricate herringbone-pattern silver chains. With spring and pin; part of the spring and pin detached. Pendants bent and partly damaged; chains slightly damaged. L 37 mm (brooch); total length with chains/pendants 150 mm Ex European private collection, acquired on the art market between circa 2000-2018.

350



169 A ROMAN SILVER-GILT BROOCH WITH DIVIDED BOW Circa late 2nd-3rd century AD. Partly gilt brooch with arched, divided bow and long foot. Hinged pin. Some deposits and hornsilver. L 65 mm Ex European private collection, acquired on the art market between circa 2000-2018.

300



170 A ROMAN SILVER EARLY CROSSBOW BROOCH Circa second half of 3rd century AD. So-called 'Scharnierarmfibel', a direct precursor of the classical crossbow brooches. With arched bow, tubular foot, and hinged pin. Minor deposits. L 55 mm Ex European private collection, acquired on the art market between circa 2000-2018.

200



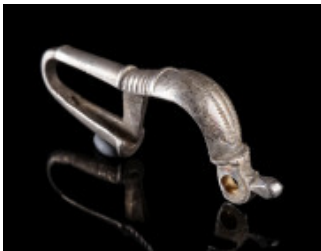
171 AN ELABORATELY DECORATED ROMAN SILVER BROOCH Circa second half of 3rd century AD. Brooch with arched bow and tubular foot. Bow and foot elaborately decorated with sheet gold and small silver knobs (partly missing and damaged). Hinged pin. L 51 mm Ex European private collection, acquired on the art market between circa 2000-2018.

180



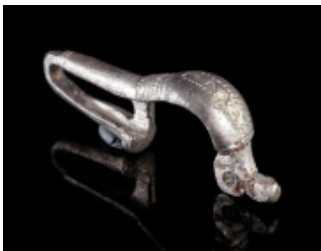
172 A DECORATED ROMAN SILVER ANNULAR BROOCH Circa 3rd-4th century AD. Annular brooch with running chevron patterns inlaid with niello; with a trapezoid extension. The pin is ancient but possibly does not belong. Diameter 34 mm; L 45 mm (total) Ex European private collection, acquired on the art market between circa 2000-2018.

250



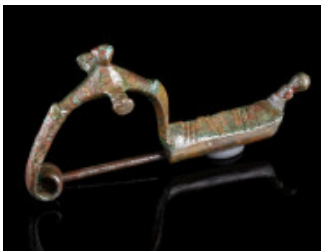
173 A BYZANTINE SILVER BROOCH WITH BENT FOOT Circa 6th-7th century AD. Cast bow brooch with folded foot ('umgeschlagenem Fuß'); incised and punched decoration. Spring and pin not preserved. L 38 mm Ex European private collection, acquired on the art market between circa 2000-2018.

200



174 A BYZANTINE SILVER BROOCH WITH BENT FOOT Circa 6th-7th century AD. Cast bow brooch with folded foot ('umgeschlagenem Fuß'); incised and punched decoration. Iron spring and pin not preserved. L 38 mm Ex European private collection, acquired on the art market between circa 2000-2018.

200



175 AN IRON AGE BRONZE CERTOSA-TYPE FIBULA Circa 6th-5th century BC. The bow decorated with three knobs; the foot with incised lines terminates in a further profiled knob. With spring and pin. L 69 mm Ex Austrian private collection D. B., acquired in the 1980s-90s.

50



176 AN IRON AGE BRONZE SERPENTINE FIBULA Circa 6th-5th century BC. The bow with incised decoration. With spring and pin. Somewhat corroded and small part of the foot terminal missing. L 79 mm Ex Austrian private collection D. B., acquired in the 1980s-90s.

50



177 A PHRYGIAN BRONZE FIBULA Circa 7th-6th century BC. With an arched and profiled bow. With spring, pin missing. L 37 mm Ex European private collection, acquired on the German art market before 2010.

30



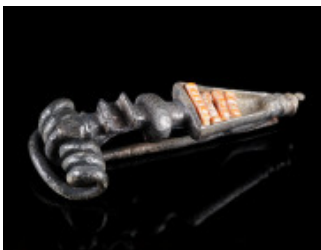
178 A PHRYGIAN BRONZE FIBULA Circa 7th-6th century BC. With an arched, profiled bow and a catch plate in the shape of a hand; spiral and pin made of iron. Some earthen deposits. L 35 mm Austrian private collection, acquired on the European art market.

45



179 A CELTIC BRONZE FIBULA FROM THE MIDDLE LA TENE PERIOD Circa 3rd-2nd century BC. The slightly profiled foot is bent upwards and attached to the bow. With spring and pin. Somewhat rough surface. L 86 mm Ex European private collection, acquired on the German art market before 2010.

40



180 A CELTIC LA TENE PERIOD BRONZE FIBULA Circa 3rd-2nd century BC. An elaborately decorated profiled fibula with coral inlay. With spring and pin. Inlay partly missing and small part of the foot not preserved. L 43 mm Ex European private collection, acquired on the German art market before 2010.

50



181 A CELTIC LA TÈNE PERIOD BRONZE FIBULA Circa 3rd century BC. The foot is bent upwards and attached to the bow. The bow is decorated with a rectangular plate that once was enamelled. Spring and pin not preserved. L 63 mm Ex Austrian private collection O. H., acquired between 1990-2010.

70



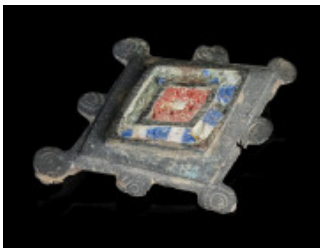
182 AN IRON AGE/EASTERN CELTIC BRONZE BOW FIBULA Circa 4th-3rd century BC. La Tène Type/Thracian Type fibula. Made of one piece with spring and pin; the foot terminates in a faceted conical knob. L 37 mm Ex Austrian private collection O. H., acquired between 1990-2010.

50



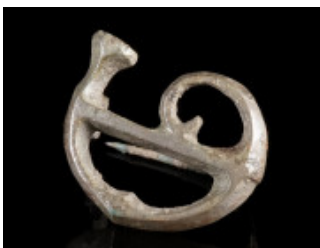
183 AN IRON AGE/EASTERN CELTIC BRONZE BOW FIBULA Circa 4th-3rd century BC. La Tène Type/Thracian Type fibula. Made of one piece with spring and pin; the foot terminates in a faceted conical knob. L 29 mm Ex Austrian private collection O. H., acquired between 1990-2010.

50



184 A ROMAN ENAMELLED BRONZE PLATE BROOCH Circa 2nd century AD. A lozenge-shaped plate brooch, the front face decorated with fields of blue, white, and red enamel (champlevé enamel). With hinged pin; part of pin missing. L 43 mm Ex Austrian private collection, acquired in the 1980s-90s.

50



185 A ROMAN BRONZE MILITARY HORN BROOCH Circa 2nd-3rd century AD. Openwork plate brooch in the shape of a cornu, a Roman horn that was mainly used in the army to pass on commands. It was worn by the cornices. With hinged pin. Some remains of tinning. L 29 mm Ex Austrian private collection, acquired in the 1980s-90s.

120



186 A ROMAN BRONZE KANTHAROS BROOCH Circa 2nd-3rd century AD. Openwork plate brooch in the shape of a stylised kantharos (drinking cup). With hinged pin. Part of catch plate not preserved. H 29 mm Ex Austrian private collection, acquired in the 1980s-90s.

60



187 A ROMAN ENAMELLED BRONZE DISK BROOCH Circa 2nd century AD. The raised centre decorated with a ring of millefiori flowers on a blue ground. With a finely notched bronze edge surmounted by two small 'disks' that carry a ring-and-dot motif. Hinged, pin and one lug not preserved. L 32 mm (max. diameter) From the collection of an Austrian art dealer, acquired on the European art market.

150



188 A ROMAN TINNED BRONZE HORSE BROOCH Circa 2nd-3rd century AD. Brooch in the shape of a horse striding to left; set on a horizontal base. Much of the original tinning remains. Hinged, pin missing. L 35 mm Austrian private collection, acquired on the European art market.

100



189 A ROMAN BRONZE S-SHAPED BROOCH Circa 2nd-3rd century AD. S-shaped plate brooch decorated with punched rings/crescents. Ends with notched edges. With hinged pin. H 37 mm From the collection of an Austrian art dealer, acquired on the European art market.

100



190 A LARGE ROMAN BRONZE KNEE BROOCH Circa 2nd-3rd century AD. With faceted bow and hinged pin. L 50 mm Acquired on the UK art market.

30



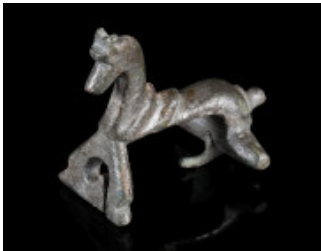
191 A LARGE ROMAN BRONZE KNEE BROOCH Circa 2nd-3rd century AD. With faceted bow leading to a pelta-shaped head plate; spring and pin made of bronze, cylindrical hood made of iron. L 43 mm Acquired on the UK art market.

50



192 A ROMAN BRONZE STRONGLY PROFILED BROOCH WITH A BIRD Circa 2nd century AD. A so-called 'Kräftig Profilierte Fibel'. The bow is decorated with a stylised bird. The foot terminates in a large protruding knob. With spring and pin. L 47 mm From the collection of an Austrian art dealer, acquired on the European art market.

100



193 A ROMAN BRONZE HORSE BROOCH Circa 2nd-3rd century AD. Brooch in the shape of a horse, worked three-dimensional. Some remains of tinning. With hinged pin; part of pin missing. L 33 mm From the collection of an Austrian art dealer, acquired on the European art market.

80



194 A LARGE ROMAN BRONZE KNEE BROOCH Circa 2nd-3rd century AD. With semicircular head plate. Spring and pin. L 55 mm Acquired on the UK art market.

25



195 A ROMAN ENAMELLED BRONZE FISH BROOCH Circa 2nd century AD. Brooch in the shape of a fish to right. The eye is indicated by a ring of red enamel. The body is decorated with punched crescents indicating the scales. Small part of the mouth, and part of the catch plate and hinge restored; pin missing. L 35 mm From the inventory of an Austrian art dealer, acquired on the European art market.

150



196 A LATE ROMAN BRONZE BIRD BROOCH Circa 3rd-4th century AD. Brooch in the shape of a bird with folded wings and fantail. The body decorated with ring-and-dot motifs, incised lines, and notched edges. With a long rectangular catch plate. Spring and pin not preserved. L 31 mm Ex Austrian private collection D. B., acquired in the 1980s-90s.

50



197 A LARGE ROMAN BRONZE STRONGLY PROFILED BROOCH WITH A BIRD Circa 2nd-3rd century AD. A so-called 'Kräftig Profilierte Fibel'. The bow is decorated with a stylised bird and incised lines. The foot terminates in a large protruding knob. With spring and pin. L 65 mm Austrian private collection, acquired on the European art market.

90



198 A ROMAN BRONZE 'SONTHEIM' TYPE BROOCH Circa late 1st-2nd century AD. With elaborate decoration and partly tinned; hinged pin made of iron not preserved. Type 3b after Grönke/Weinlich 1994. L 45 mm Acquired on the UK art market.

50



199 A ROMAN BRONZE BIRD BROOCH Circa 2nd-3rd century AD. Modelled in the shape of a bird with folded wings. The body decorated with ring-and-dot motifs and incised lines. With spring, pin missing. Somewhat rough patina. L 31 mm Austrian private collection, acquired on the European art market.

50



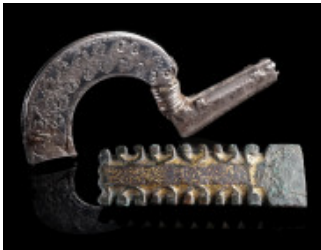
200 A LATE ROMAN GILT BRONZE CROSSBOW BROOCH Circa 4th century AD. With arched bow and faceted onion-shaped terminals ('Zwiebelknöpfe'). The foot is decorated with two pairs of moulded volutes and terminates in a further volute. With hinged pin; some gilding remains. L 63 mm Austrian private collection, acquired on the European art market.

90



201 A LATE ROMAN GILT BRONZE CROSSBOW BROOCH Circa 4th century AD. With arched bow and faceted onion-shaped terminals ('Zwiebelknöpfe'). Bow and foot decorated with an interlace band, the foot is further decorated with a carved design. With hinged pin; uneven patination with some corrosion. L 80 mm
Ex European private collection, acquired on the German art market before 2000.

70



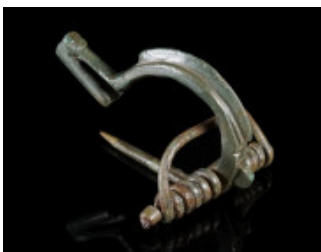
202 TWO ELABORATELY DECORATED PARTS OF CROSSBOW BROOCHES Circa 4th-5th century AD. A silver and niello bow and foot of a crossbow brooch decorated with continuous wave patterns; and a gilt bronze foot with niello ornaments and moulded pairs of volutes. L 70 mm, and L 49 mm
Ex European private collection, acquired on the German art market before 2010.

50



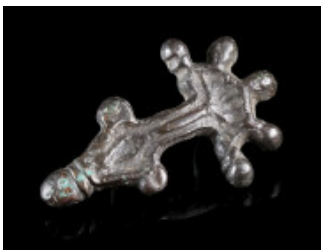
203 A LATE ANTIQUE BRONZE BIRD BROOCH Circa 4th-6th century AD. Bird with folded wings, the body decorated with incised lines. With spring and pin made of iron. L 32 mm. From the inventory of an Austrian art dealer, acquired on the European art market.

50



204 A LATE ANTIQUE/GERMANIC BRONZE KNOB-BOW BROOCH Circa 4th-5th century AD. Variant of the so-called 'Bügelknopffibel'. The arched bow with a raised ridge, bow and foot decorated with a few incised lines. With spring and pin. L 57 mm
Ex Austrian private collection D. B., acquired in the 1980s-90s.

50



205 AN OSTROGOTHIC BRONZE BROOCH Circa 5th-6th century AD. Small brooch with semicircular head plate with five knobs and lozenge-shaped foot. With chip carved decoration. Spring and pin not preserved. L 34 mm
Ex Austrian private collection D. B., acquired in the 1980s-90s.

35



206 A LANGOBARDIC SILVER-GILT S-SHAPED BROOCH Circa 6th century AD. S-shaped brooch with animal headed terminals and garnet inlaid eyes. With chip carved decoration. Spring made of iron, pin not preserved. L 25 mm Austrian private collection, acquired on the European art market.

340



207 A BALTIC VIKING BRONZE PENANNULAR BROOCH Circa 9th-11th century AD. Small brooch with coiled profiled ends. Diameter 23 mm (max.) Austrian private collection, acquired on the European art market.

40



208 A BALTIC VIKING BRONZE PENANNULAR BROOCH Circa 9th-11th century AD. Small brooch with coiled profiled ends. Diameter 25 mm (max.) Austrian private collection, acquired on the European art market.

40



209 TWO PARTS OF CELTIC LA TENE PERIOD BRONZE FIBULAE Circa 3rd century BC. Two attachments with enamelled rectangular plates from Celtic fibulae, originally attached to the bow. Some remains of enamel preserved. L 45 mm, and L 28 mm Ex Austrian private collection O. H., acquired between 1990-2010.

30



210 A PHRYGIAN BRONZE FIBULA Circa 7th-6th century BC. Fibula with arched and profiled bow. With spring and pin. L 32 mm From the collection of an Austrian art dealer, acquired on the European art market.

30



211 A ROMAN BRONZE RING BROOCH Circa 3rd-4th century AD. Late Roman ring brooch. Some remains of tinning; the original iron pin is not preserved. L 76 mm From the collection of an Austrian art dealer, acquired on the European art market.

35



212 A LATE ROMAN STAMP SEAL WITH A CHRISTOGRAM Circa 4th century AD. Circular seal matrix with a figural scene. On top a Christogram (Chi-Rho symbol, XP standing for the Greek word ΧΡΙΣΤΟΣ = Christos) within an arch, below a scene with two men wearing short tunic. Hoop/handle at the back completely restored (made of resin). Diameter 24 mm From the collection of an Austrian art dealer, acquired on the European art market.

180



213 A ROMAN BRONZE LID WITH A HARE FROM A SEAL BOX Circa 1st-2nd century AD. Lid from a circular seal box with separately riveted zoomorphic form (hare). Lug broken and ear of the hare partly missing. Diameter 20 mm Private property, acquired on the European art market.

25



214 A ROMAN ENAMELLED BRONZE LID FROM A SEAL BOX Circa 2nd century AD. Lozengiform lid with lug from a seal box with separately riveted zoomorphic phallus; with minor remains of enamel. L 36 mm From the collection of an Austrian art dealer, acquired on the European art market.

70



215 A QUATREFOIL BYZANTINE BRONZE BREAD STAMP Circa 5th-8th century AD. With the Greek letter Epsilon (ε) centrally; a small, pierced handle at the back. L 40 mm, W 38 mm Austrian private collection, acquired on the European art market.

70



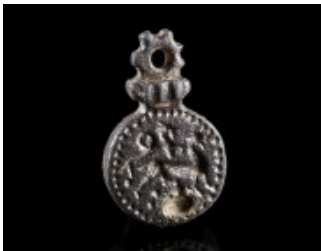
216 A CIRCULAR BYZANTINE BRONZE BREAD STAMP Circa 5th-8th century AD. With the Greek letters XHΣ; a small strap loop/handle at the back. Diameter 42 mm From the collection of an Austrian art dealer, acquired on the European art market.

80



217 A BYZANTINE BRONZE STAMP SEAL WITH A MILITARY SAINT Circa 8th-10th century AD. Domed seal matrix with suspension loop depicting a nimbate, cuirassed, and draped bust of a bearded saint with spear. Diameter 12 mm, H 18 mm Ex European private collection, acquired on the German art market before 2000.

80



218 A BYZANTINE OR MEDIEVAL BRONZE STAMP SEAL PENDANT Circa 10th-14th century AD. Both sides decorated with a zoomorphic design; with an offset profiled suspension loop. Small flaw on one side. H 26 mm Ex Austrian private collection, acquired in the 1980s-90s.

50



219 A BYZANTINE LEAD SEAL WITH A SAINT Circa 11th century AD. Nimbate facing bust of a bearded saint, [A]ΓΙΟC [...]. A Greek inscription on the reverse. Diameter 16 mm From the inventory of an Austrian art dealer, acquired on the European art market.

50



220 A ROMAN TERRACOTTA OIL LAMP WITH AN EQUES Circa 1st-2nd century AD. Fine oil lamp with rounded body, concave discus, and triangular voluted nozzle; the discus is decorated with a helmeted Roman 'cavalryman' (eques) with round shield and spear attacking to the left. With a maker's mark in the form of a foot (planta pedis). Loeschke Type I B. Broken and repaired (glued) with virtually no parts missing. L 98 mm Ex Bavarian private collection H. W., acquired in 2014 from Zlatko Plesa, Frankfurt. Before, collection of Arno Jumpertz, Leverkusen, 1924-1984.

100



221 A LATE ROMAN CHRISTIAN OIL LAMP WITH A STAUROGRAM Circa 4th-5th century AD. The shoulders are decorated with geometric motifs, the concave discus features a Latin cross combined with a rho (Staurogram or Monogrammatic Cross). African Red Slip Ware (ARS), Atlante form X A1 a. Nozzle broken, surface somewhat chipped. L 11.5 cm Ex Austrian private collection Hofrat Dr. A. O., 1920-1994.

50



222 A BLACK-GLAZED GREEK OIL LAMP WITH HORIZONTAL HANDLE Circa 6th-5th century BC. So-called 'Padlock' oil lamp with horizontal loop handle. L 11.9 cm Ex Austrian private collection, acquired in the 1980s-90s.

80



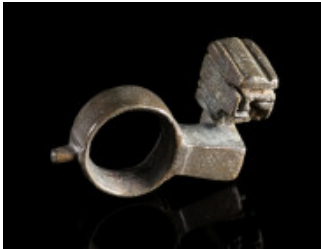
223 FRONT PART OF A ROMAN BRONZE FIGURAL PADLOCK WITH FACE Circa 2nd-3rd century AD. Upper part of a Roman padlock in the shape of a stylised face. H 32 mm Ex European private collection, acquired on the German art market before 2000.

75



224 A ROMAN BRONZE ROTARY KEY Circa 3rd-4th century AD. Key with hollow tubular shank and large circular bow; the key bit with various ward-cuts. Surface treated with a thin layer of protective cellulose lacquer. L 66 mm From the collection of an Austrian art dealer, acquired on the European art market.

80



225 AN ELABORATE ROMAN BRONZE KEY Circa 1st-3rd century AD. With circular bow, a short square shank, and an intricate offset key bit; some damage to bit. L 43 mm Private property, acquired on the European art market.

35



226 A ROMAN BRONZE KEY RING Circa 1st-3rd century AD. With a short projecting shank and an offset key bit. Two deep scratches/cuts. L 30 mm Acquired on the European art market.

35



227 A ROMAN BRONZE KEY RING Circa 1st-3rd century AD. With a projecting square openwork key bit. Outer diameter 21 mm; L 30 mm From the collection of an Austrian art dealer, acquired on the European art market.

50



228 A ROMAN BRONZE KEY RING Circa 1st-3rd century AD. With a projecting square openwork key bit; the rectangular bezel and the bit with incised linear decoration. Outer diameter 21 mm; L 20 mm Acquired on the European art market.

35



229 A ROMAN BRONZE KEY RING Circa 1st-3rd century AD. With a projecting hollow tubular shank and a key bit with ward-cuts; the bezel with incised linear decoration. Outer diameter 23 mm; L 22 mm Acquired on the European art market.

35



230 A ROMAN BRONZE KEY WITH SUSPENSION RING Circa 2nd-3rd century AD. With a long handle with loop and a bronze ring for suspension; the key bit with parallel incisions. The edge of the loop notched, the handle with further incised decoration. L 49 mm (key) Ex Austrian private collection O. H., acquired between 1990-2010.

50



231 A ROMAN BRONZE KEY RING Circa 1st-3rd century AD. With a short projecting shank and an offset key bit. Outer diameter 21 mm; L 19 mm Acquired on the European art market.

35



232 A BYZANTINE BRONZE FOLDING KEY Circa 5th-6th century AD. With hollow tubular shank and key bit with two slots; attached to a ring. L 42 mm (total) From the collection of an Austrian art dealer, acquired on the European art market.

30



233 A ROMAN BRONZE KEY RING Circa 1st-3rd century AD. With a projecting square openwork key bit; the rectangular bezel with incised linear decoration. Outer diameter 21 mm; L 20 mm Acquired on the European art market.

35



234 A VERY SMALL ROMAN BRONZE KEY Circa 2nd-3rd century AD. With circular bow, short shank, and projecting key bit. L 25 mm Ex European private collection, acquired on the German art market before 2000.

30



235 A ROMAN BRONZE KEY RING Circa 1st-3rd century AD. With a projecting square openwork key bit; the rectangular bezel with incised linear decoration. Outer diameter 21 mm; L 19 mm Acquired on the European art market.

35



236 TWO ROMAN BRONZE KEY RINGS Circa 1st-3rd century AD. With short projecting shanks and offset key bits. Two deep scratches/cuts. Key bit of smaller ring probably reattached/restored. L 29 mm, and L 25 mm Ex European private collection, acquired on the German art market before 2000.

50



237 A BYZANTINE BRONZE PADLOCK IN THE SHAPE OF A HORSE Circa 9th-12th century AD. Half a figural padlock in the shape of saddled horse. L 43 mm Ex European private collection, acquired on the German art market before 2000.

35



238 A GROUP OF FIVE ROMAN BRONZE CHEST-LOCK BOLTS Circa 1st-3rd century AD. The holes would have matched up to the teeth of a key, allowing to release the bolt and slide it. L 66-74 mm Ex European private collection, acquired on the German art market before 2000.

50



239 A GROUP OF FIVE ROMAN BRONZE CHEST-LOCK BOLTS Circa 1st-3rd century AD. The holes would have matched up to the teeth of a key, allowing to release the bolt and slide it. L 64-76 mm Ex European private collection, acquired on the German art market before 2000.

50



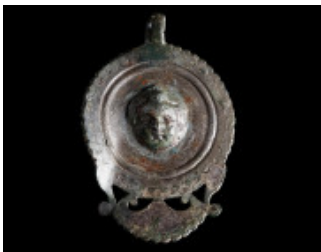
240 AN EARLY MODERN WROUGHT IRON BALL PADLOCK Circa 16th-17th century AD. Made of several pieces joined together. Ball-shaped lock housing with semi-circular bar and central keyhole. Some pitting corrosion. H 52 mm Ex Austrian private collection D. B., acquired in the 1980s-90s.

30



241 A FINE ROMAN BRONZE BELT BUCKLE FROM A MILITARY BELT Circa 2nd-3rd century AD. Belt buckle with an intricate openwork design from a Roman military belt (cingulum militiae). L 44 mm From the collection of an Austrian art dealer, acquired on the European art market.

80



242 A PENDANT FROM AN EARLY ROMAN MILITARY HORSE HARNESS Circa 1st century AD. Circular pendant with pelta-shaped extension and suspension hook; the central medallion decorated with a separately attached head of Eros in high relief. With remains of the original silver plating; somewhat bent. H 67 mm Ex European private collection, acquired on the German art market before 2000.

250



243 TWO ROMAN BRONZE PELTA-SHAPED BELT FITTINGS Circa 2nd-3rd century AD. Pelta-shaped fittings with two fungiform studs each for attachment on the reverse. H 22 mm, W 26 mm; and H 23 mm, W 21 mm Ex Austrian private collection D. B., acquired in the 1980s-90s.

35



244 A MIGRATION PERIOD SILVER STRAP DIVIDER Circa 5th-6th century AD. Buckle-shaped divider with two fittings to accommodate the strap ends. L 31 mm (total) Ex Austrian private collection D. B., acquired in the 1980s-90s.

35



245 A GROUP OF FOUR SMALL BRONZE BUCKLES AND A STRAP END Circa 1st-4th century AD. Roman to Late Antique period. The strap end decorated with ring-and-dot motifs. L 18-27 mm Ex Austrian private collection D. B., acquired in the 1980s-90s.

30



246 THREE PENDANTS FROM EARLY ROMAN MILITARY HORSE HARNESSES Circa 1st century AD. Leaf/pelta-shaped pendants with suspension hook; one with wolf-headed hook, and one with original tinning. Somewhat bent with minor corrosion/damage. H 38-61 mm Ex European private collection, acquired on the German art market before 2000.

35



247 TWO ROMAN BRONZE PENDANTS AND TWO BELT FITTINGS Circa 1st-3rd century AD. Two profiled pendants from a belt, and two bronze belt fittings. One fitting in the shape of a Roman pugio (military dagger), with a fungiform stud for attachment on the reverse. L 26-52 mm (total) Ex Austrian private collection D. B., acquired in the 1980s-90s.

30



248 A GROUP OF FOUR ROMAN BRONZE OBJECTS Circa 1st-3rd century AD. Two pendants from a Noric-Pannonian belt, a profiled belt stud or mount, and an armour scale from a lorica squamata. L 14-62 mm Ex Austrian private collection D. B., acquired in the 1980s-90s.

30



249 THREE PENDANTS FROM EARLY ROMAN MILITARY HORSE HARNESSES Circa 1st century AD. Heart/leaf-shaped pendants with suspension hook; the smallest could also be from a military belt. One pendant slightly bent/damaged. H 28-51 mm Ex European private collection, acquired on the German art market before 2000.

35



250 A GROUP OF FOUR ROMAN BRONZE MILITARY BELT BUCKLES Circa 2nd-3rd century AD. D-shaped with a triangular or rectangular loop at the back. One with bronze thorn, two with remains of iron thorns. L 29-42 mm Ex European private collection, acquired on the German art market before 2000.

40



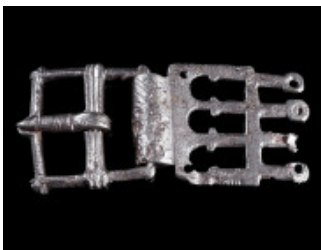
251 A GROUP OF FOUR ROMAN BRONZE MILITARY BELT BUCKLES Circa 2nd-3rd century AD. D-shaped with a triangular or rectangular loop at the back. Two with bronze thorns. L 27-37 mm Ex European private collection, acquired on the German art market before 2000.

40



252 A LATE ANTIQUE/MIGRATION PERIOD SILVER BELT BUCKLE Circa 5th-6th century AD. Belt buckle with elongated triangular plate with three rivet holes; and two silver fittings that possibly belonged to the same belt. L 51 mm (buckle); L 14 mm, and L 20 mm (fittings) Austrian private collection, acquired on the European art market.

95



253 A LATE ROMAN MILITARY IRON BELT BUCKLE Circa 4th-5th century AD. Elaborate belt buckle with openwork plate. Well preserved, with some corrosion marks. L 89 mm From the collection of an Austrian art dealer, acquired on the European art market.

50



254 A MEDIEVAL BRONZE OPENWORK MOUNT Circa 10th-14th century AD. Circular mount with an openwork design around a central boss. Three trefoil extensions with rivet holes for attachment. Diameter 70 mm (without extensions) From the collection of an Austrian art dealer, acquired on the European art market.

60



255 A SET OF THREE ROMAN TINNED BRONZE CHARIOT FITTINGS Circa 2nd-3rd century AD. a) Two terminal mounts with cuboid base and flared rim, surmounted by a pelta-shaped plaque with central palmette; and b) one terminal mount similar to the above with two plaques mounted converging and substantial C-shaped loop beneath. H 95 mm each (a); and H 105mm (b) Ex Timeline Auctions, Harwich, 24 June 2011, Lot 245. Before, UK art market, acquired prior to 2000.

850



256 A GREEK LEAD TETRADRACHM WEIGHT Circa 4th century BC. Square weight with remains of a square suspension loop. The weight features the Greek letter Δ to denote the denomination of 4 drachms (Tetradrachm). Attic weight standard! L 28 x 28 mm; 17.15 g From the collection of an Austrian art dealer, acquired on the European art market.

30



257 A GRAECO-ROMAN LEAD MARKET WEIGHT Circa 1st-3rd century AD. A half libra/litra market weight (HMI/ΛΕΙΤΡΟΝ, ἡμίλειτρον) that was countermarked and damaged/cut at some point in antiquity. It features the rare depiction of a balance scale on one side. A highly interesting object. H 48 mm, W 42 mm; 131.38 g Austrian private collection, acquired on the European art market.

120



258 A BYZANTINE BRONZE COMMERCIAL WEIGHT OF ONE OUNCE Circa 5th-7th century AD. Square weight with a long cross flanked by the Greek letters ΓΑ for one ounce. L 22 x 22 mm; Weight 26.13 g From the collection of an Austrian art dealer, acquired on the European art market.

30



259 A GROUP OF FIVE BYZANTINE BRONZE SPHERICAL WEIGHTS Circa 5th-7th century AD. Commercial weights. One inscribed □B (two ounces), another inscribed Γ (?), and three anepigraphic weights. Diameter 7-23 mm Ex European private collection, acquired on the German art market before 2000.

50



260 A GROUP OF FIVE BYZANTINE BRONZE SPHERICAL WEIGHTS Circa 5th-7th century AD. Commercial weights. Some inscribed (eg. a half ounce inscribed IB, and two ounces with an incised, abbreviated inscription). Diameter 9-23 mm Ex European private collection, acquired on the German art market before 2000.

50



261 A GROUP OF ELEVEN LATE ROMAN-BYZANTINE BRONZE WEIGHTS Circa 4th-7th century AD. (Roughly) circular weights, some with incised or punched symbols; one made from a Roman antoninianus and pierced. Diameter: 9-17 mm Ex European private collection, acquired on the German art market before 2000.

50



262 A GROUP OF SEVEN LATE ROMAN-BYZANTINE BRONZE WEIGHTS Circa 4th-7th century AD. Square (coin) weights, some with incised or punched symbols or inscription (eg. a one nomisma weight inscribed with an N) Diameter: 8-17 mm Ex European private collection, acquired on the German art market before 2000.

40



263 A SMALL INSCRIBED BRONZE WEIGHT Of uncertain age, possibly early modern? Circular weight with suspension loop on the back. Diameter 14 mm (without loop) From the collection of an Austrian art dealer, acquired on the European art market.

30



264 AN OTTOMAN BRONZE AND LEAD STEELYARD WEIGHT Circa 16th-17th century AD. Faceted bronze steelyard weight filled with lead; with suspension loop and an iron hook. H 58 mm (without hook); 252.8 g Austrian private collection, acquired on the European art market.

90



265 A ROMAN PALE YELLOW-GREEN GLASS DISH WITH HANDLES Circa 1st-3rd century AD. Shallow glass dish with almost horizontal shoulder and broad rim; set on a tubular base ring. The bottom almost flat but for a thick dome at the centre. Two vertically ribbed handles attached to the rim. A few cracks on one side (but not broken). For a similar dish see: The Metropolitan Museum, New York, accession no. 17.194.72. Diameter 16 cm, H 3.1 cm Ex Austrian private collection Hofrat Dr. A. O., 1920-1994.

500



266 A ROMAN PALE YELLOW-GREEN GLASS FLASK Circa 2nd-3rd century AD. Flask with pear-shaped body, cylindrical neck, and flared mouth with thickened rim. The body is decorated with a series of wheel-cut bands. The surface is slightly weathered with an attractive silvery iridescence. H 18 cm Ex Austrian private collection Hofrat Dr. A. O., 1920-1994.

300



267 A LARGE ROMAN PALE BLUE-GREEN GLASS BALSAMARIUM Circa 2nd-3rd century AD. Balsamarium with pear-shaped body and tall, cylindrical neck with folded disk-rim. H 16.5 cm Acquired on the German art market between 2004-2010.

120



268 A ROMAN PALE BLUE GLASS BALSAMARIUM Circa 2nd-3rd century AD. Balsamarium with pear-shaped body and cylindrical neck with folded disk-rim. The surface is slightly weathered with an attractive iridescence. H 12.9 cm From the collection of an Austrian art dealer, acquired on the European art market.

120



269 A ROMAN PALE BLUE-GREEN GLASS BALSAMARIUM Circa 2nd-3rd century AD. Balsamarium with globular body and tall, cylindrical neck with folded disk-rim. the neck pinched-in where it meets the body. Cracked (but not broken); calcareous/earthen deposits. H 13.1 cm From the collection of an Austrian art dealer, acquired on the European art market.

120



270 A ROMAN PALE YELLOW-GREEN GLASS JAR WITH TWO HANDLES Circa 3rd-4th century AD. Small glass jar with squat globular body, short cylindrical neck, and wide mouth with thickened rim. Two angular handles in dark blue-green glass are applied to the vessel's shoulders and pulled up to the rim (one handle broken). The body is decorated with a thick dark blue-green thread in a zigzag pattern, the neck is decorated with a thin dark blue-green thread that spirals up to the mouth. H 54 mm Ex Austrian private collection Hofrat Dr. A. O., 1920-1994.

100



271 A SMALL LATE ROMAN/BYZANTINE GLASS BRACELET Circa 4th-8th century AD. Translucent blue glass; with flat inner side. Diameter 42 mm Ex Austrian private collection, acquired in the 1980s-90s.

30



272 A ROMAN JET PENDANT/BEAD IN THE SHAPE OF A FEMALE BUST Circa 3rd-4th century AD. Draped bust of a woman with an elaborate hairstyle. With a horizontal hole through the neck for suspension; flat back. H 20 mm From the collection of an Austrian art dealer, acquired on the European art market.

100



273 AN ELABORATELY DECORATED ROMAN BRONZE SCALPEL Circa 1st century AD. The handle at the middle is square in section; at one end, a slot for the insertion of an iron blade (now missing), at the other end, a leaf-shaped blade for blunt dissection procedures. Both sides inlaid in silver with a wave pattern surrounding a floral scroll motif. L 78 mm From the collection of an Austrian art dealer, acquired on the European art market.

190



274 A ROMAN BRONZE PLUMB BOB Circa 1st-2nd century AD. Solid conical bronze plumb bob decorated with grooved rings. The top with a projecting globular terminal with three circular holes for suspension. H 44 mm Ex Austrian private collection Hofrat Dr. A. O., 1920-1994.

50



275 A ROMAN BRONZE FISH HOOK Circa 1st-3rd century AD. Barbed hook with flattened terminal. L 46 mm Austrian private collection, acquired on the European art market.

40



276 A ROMAN BRONZE FISH HOOK Circa 1st-3rd century AD. Barbed hook with flattened terminal. Some earthen deposits. L 45 mm Austrian private collection, acquired on the European art market.

40



277 A ROMAN BRONZE HAIRPIN WITH A BIRD Circa 2nd-3rd century AD. The head shaped in the form of a bird. Bent and patina chipped away in some places. L 96 mm Ex Austrian private collection D. B., acquired in the 1980s-90s.

35



278 A DECORATED ROMAN BRONZE LID OF AN INKWELL Circa 1st-2nd century AD. An elaborately decorated lid of an inkwell with inlaid silver and gold bands of running scroll and ivy tendril, separated by plain bands. A good amount of the inlays is still preserved. Diameter 31 mm Ex European private collection, acquired on the German art market before 2010.

40



279 A PAIR OF ROMAN BRONZE MEDICAL TWEEZERS/FORCEPS Circa 1st century AD. Profiled head with silver/niello inlays. With long arms, unlike the standard type of Roman depilation tweezers; probably used for minor surgical operations. Similar objects have been found among ancient sets of medical instruments. Bent. L 11.2 cm Ex Austrian private collection, acquired in the 1980s-90s.

120



280 A DECORATED ROMAN SILVER LIGULA Circa 1st-4th century AD. Pin-like medical instrument or cosmetic spoon with a small scoop at the profiled end. Tip bent and slightly cracked; minor scratch. L 12.8 cm From the collection of an Austrian art dealer, acquired on the European art market.

70



281 A ROMAN BRONZE HANDLE IN THE SHAPE OF A CLUB Circa 1st-2nd century AD. Profiled and decorated. Probably the handle of a medical instrument; remains of iron at the lower end. L 51 mm From the collection of an Austrian art dealer, acquired on the European art market.

90



282 A ROMAN STONE COSMETIC PALETTE Circa 1st-3rd century AD. Stone palette for grinding/mixing ointment, medicine, or make-up ingredients; with signs of heavy use in antiquity. Similar objects have been found together with ancient sets of medical instruments. One edge broken. L 72 mm, W 56 mm Ex European private collection, acquired on the German art market before 2000.

70



283 TWO ROMAN BRONZE SEWING NEEDLES Circa 1st-4th century AD. Both heavily bent and somewhat corroded but intact. L 11 cm, and L 14.3 cm Ex Austrian private collection, acquired in the 1980s-90s.

30



284 HANDLE OF A ROMAN BRONZE CASSEROLE WITH MAKER'S MARK Circa 1st century AD. Terminal of a handle with ring loop, the top with ornamental bands. With a stamped maker's mark that reads ANSI(VS) EPHAPRO(TIVS), a known manufacturer from Capua in Italy. L 92 mm Austrian private collection, acquired on the European art market.

100



285 A GREEK LEAD SLING-SHOT WITH DROMAS INSCRIPTION Circa 4th century BC. Almond shaped sling bullet with the Greek name ΔΡΟΜΑΣ on one side and a faint dotted design (further letters?) on the other. Probably referring to a certain Ainianian military commander named Dromas, known from a sling bullet found near Milet. L 38 mm From the collection of an Austrian art dealer, acquired on the European art market.

120



286 A GREEK LEAD SLING-SHOT OF PHILIPP II OF MACEDON Circa 4th century BC. Almond shaped sling bullet with the Greek name ΦΙΛΙ / ΠΠΟΥ in the genitive case (PHILIPPOU, 'of Philipp'), meaning Philipp II of Macedon as supreme commander of the army. L 30 mm Ex Austrian private collection O. H., acquired between 1990-2010.

35



287 A GREEK/ROMAN SLING-SHOT WITH A LEAF Circa 4th-1st century BC. Almond shaped sling bullet with a circular stamp mark featuring a leaf. L 35 mm Austrian private collection, acquired on the European art market.

70



288 A GREEK/ROMAN SLING-SHOT WITH THUNDERBOLT AND SCORPION Circa 4th-1st century BC. Almond shaped sling bullet with a thunderbolt on one side and a scorpion on the other. The thunderbolt alludes to Zeus/Jupiter throwing his lightning bolts. L 34 mm Ex Austrian private collection O. H., acquired between 1990-2010.

35



289 A HELLENISTIC/ROMAN SLING-SHOT WITH STAMP MARKS Circa 2nd-1st century BC. Large lead sling bullet of biconical shape with a stamp mark on either side: a cross on one side, and a rosette on the other. L 42 mm Austrian private collection, acquired on the European art market.

70



290 POMPEY THE GREAT LEAD SLING-SHOT WITH CN MAG INSCRIPTION Roman, circa 45 BC. Large lead sling bullet of biconical shape with abbreviated Latin inscription CN MAG on one side. The inscription reads Cn(aeus) Mag(nus) and refers to Gnaeus Pompeius Magnus (Pompey the Great). This type of sling bullets has been found in Spain and dates to Pompey's war against Julius Caesar, specifically the Battle of Munda, which took place in March 45 BC. See: F. Pina Polo and W. Zanier, 'Glandes inscriptae procedentes de la Hispania Ulterior', *Archivo Español de Arqueología* 79, 2006, pp. 29-50 (especially p. 32). L 53 mm
Ex Austrian private collection D. B., acquired in the 1980s-90s.

30



291 POMPEY THE GREAT LEAD SLING-SHOT WITH CN MAG INSCRIPTION Roman, circa 45 BC. Large lead sling bullet of biconical shape with abbreviated Latin inscription CN MAG on one side. The inscription reads Cn(aeus) Mag(nus) and refers to Gnaeus Pompeius Magnus (Pompey the Great). This type of sling bullets has been found in Spain and dates to Pompey's war against Julius Caesar, specifically the Battle of Munda, which took place in March 45 BC. See: F. Pina Polo and W. Zanier, 'Glandes inscriptae procedentes de la Hispania Ulterior', *Archivo Español de Arqueología* 79, 2006, pp. 29-50 (especially p. 32). L 47 mm
Ex Austrian private collection D. B., acquired in the 1980s-90s.

30



292 POMPEY THE GREAT LEAD SLING-SHOT WITH CN MAG INSCRIPTION Roman, circa 45 BC. Large lead sling bullet of biconical shape with abbreviated Latin inscription CN MAG on one side. The inscription reads Cn(aeus) Mag(nus) and refers to Gnaeus Pompeius Magnus (Pompey the Great). This type of sling bullets has been found in Spain and dates to Pompey's war against Julius Caesar, specifically the Battle of Munda, which took place in March 45 BC. See: F. Pina Polo and W. Zanier, 'Glandes inscriptae procedentes de la Hispania Ulterior', *Archivo Español de Arqueología* 79, 2006, pp. 29-50 (especially p. 32). L 48 mm
Ex Austrian private collection D. B., acquired in the 1980s-90s.

30



293 A ROMANO-GERMANIC BRONZE PRICK SPUR Circa 2nd-4th century AD. Prick spur with central goad (made of iron, not preserved) and side arms with rivet holes for attachment; one rivet preserved. W 70 mm Ex European private collection, acquired on the German art market before 2000.

35



294 A MEDIEVAL IRON BARBED CALTROP Circa 13th-15th century AD. An area denial weapon with four sharp barbed spines arranged in such a manner that one of them always pointed upward. H 40 mm Ex Austrian private collection O. H., acquired between 1990-2010.

50



295 A ROMAN IRON CATAPULT BOLT Circa 1st-3rd century AD. Socketed catapult bolt for a Roman scorpio. L 95 mm Austrian private collection, acquired on the European art market.

40



296 A GROUP OF FOUR MEDIEVAL IRON ARROWHEADS Circa 10th-14th century AD. Two socketed arrowheads and two with tang. L 65-131 mm Ex European private collection, acquired on the German art market before 2000.

50



297 A GROUP OF FOUR MEDIEVAL IRON ARROWHEADS Circa 10th-14th century AD. Leaf-shaped arrowheads; three socketed and one with tang. L 80-108 mm Ex European private collection, acquired on the German art market before 2000.

50



298 A GROUP OF THREE MEDIEVAL IRON ARROWHEADS Circa 8th-14th century AD. One large, socketed leaf-shaped arrowhead; and two trilobate arrowheads, one socketed and one with tang. L 64-136 mm Ex Austrian private collection D. B., acquired in the 1980s-90s.

35



299 A GROUP OF THREE MEDIEVAL IRON ARROWHEADS Circa 10th-14th century AD. One socketed arrowheads and two with tang. L 75-153 mm Ex Austrian private collection D. B., acquired in the 1980s-90s.

35



300 A HEAVY MEDIEVAL IRON CROSSBOW BOLT Circa 14th-15th century AD. Four-sided socketed crossbow bolt with sharp diamond-shaped tip. L 102 mm Ex Austrian private collection Hofrat Dr. A. O., 1920-1994.

30



301 A EUROPEAN CHALCOLITHIC GOLD ATTACHMENT Circa 4th-3rd millennium BC. Fine conical gold attachment with decorated double banded rim; pierced for attachment. Diameter 25 mm; Gold! 2.73 g Ex European private collection, acquired on the German art market before 2010.

350



302 A EUROPEAN EARLY BRONZE AGE GOLD ATTACHMENT Circa 2200-1600 BC. Small conical gold attachment with punched beaded border; pierced twice for attachment. Some scratches. Diameter 14 mm; Gold! 0.90 g Ex European private collection, acquired on the German art market before 2010.

120



303 A EUROPEAN LATE BRONZE AGE SOCKETED AXE HEAD
Circa 1000-800 BC. Socketed and looped bronze axe head. L 11
cm From the collection of an Austrian art dealer, acquired on the
European art market.

180



304 A EUROPEAN LATE BRONZE AGE SOCKETED AXE HEAD
Circa 1000-800 BC. Socketed and looped bronze axe head. L 88
mm Ex Austrian private collection Hofrat Dr. A. O., 1920-1994.

180



305 A EUROPEAN CHALCOLITHIC COPPER AXE Circa 4th
millennium BC. Copper Age axe head with tapered body. L 89 mm
Ex European private collection, acquired on the German art
market before 2000.

50



306 A LATE CHALCOLITHIC/EARLY BRONZE AGE FLAT AXE Circa
3rd millennium BC. Copper or copper alloy axe head with tapered
body. Minor scratches. L 11.9 cm Austrian private collection,
acquired on the European art market.

120



307 A EUROPEAN LATE BRONZE AGE SOCKETED AXE HEAD
Circa 1000-800 BC. Small socketed and looped bronze axe head
with quadruple-banded collar. L 63 mm Ex Austrian private
collection D. B., acquired in the 1980s-90s.

80



308 A EUROPEAN LATE BRONZE AGE SOCKETED AXE HEAD Circa 1000-800 BC. Small socketed and looped bronze axe head with triple-banded collar and ribbed decoration. L 68 mm Ex Austrian private collection D. B., acquired in the 1980s-90s.

80



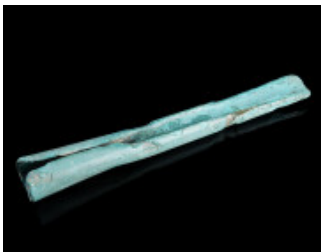
309 A EUROPEAN MIDDLE BRONZE AGE PALSTAVE AXE HEAD Circa 1600-1300 BC. Bronze Palstave axe head ('Absatzbeil') with wide blade; the flanges rise from the butt to the stop. L 12.7 cm Ex Austrian private collection, acquired in the 1980s-90s.

150



310 A EUROPEAN LATE BRONZE AGE SOCKETED AXE HEAD Circa 1000-800 BC. Small socketed and looped bronze axe head with triple-banded collar and ribbed decoration. Blade damaged, slightly corroded. L 60 mm Ex Austrian private collection D. B., acquired in the 1980s-90s.

50



311 A EUROPEAN LATE BRONZE AGE SOCKETED GOUGE Circa 1200-800 BC. Bronze woodworking tool with the blade edge C-shaped in section. Patina chipped away in some places. L 15.3 cm Ex European private collection, acquired on the German art market before 2000.

50



312 A CELTIC IRON SOCKETED AXE HEAD Circa 3rd-1st century BC. Axe head with wide blade and short socket. L 70 mm Ex Austrian private collection D. B., acquired in the 1980s-90s.

50



313 A DECORATED IRON AGE HOLLOW BRONZE BRACELET Circa 4th-3rd century BC. Made of sheet metal and decorated in repoussé. Damaged/partly crushed and heavily restored with probably some modern additions. Diameter 10.1 cm (max.) Ex Austrian private collection, acquired in the 1980s-90s.

180



314 A EUROPEAN LATE BRONZE AGE TWISTED TORQUE Circa 1000-800 BC. Formed from a single twisted bronze rod, tapering towards the plain ends. One hook at the ends preserved, the other broken. Green patina with earthen incrustations. Diameter 23.5 cm Ex Gorny & Mosch, Munich, Auction 214 (2013), Lot 635.

80



315 A LARGE ANCIENT BRONZE BRACELET WITH DECORATION Circa 1st millennium BC. With incised and punched decoration towards the ends. Some deposits. Diameter 13 cm (max.) Ex Austrian private collection D. B., acquired in the 1980s-90s.

50



316 A EUROPEAN LATE BRONZE AGE KNIFE Circa 1000-800 BC. Small bronze knife with tang; cutting edge and tip slightly chipped. L 10.4 cm Ex Austrian private collection D. B., acquired in the 1980s-90s.

35



317 A EUROPEAN LATE BRONZE AGE KNIFE Circa 1000-800 BC. Small bronze knife with curved blade and tang with pin hole. With a beautiful blue-green patina. L 10 cm Ex Austrian private collection D. B., acquired in the 1980s-90s.

35



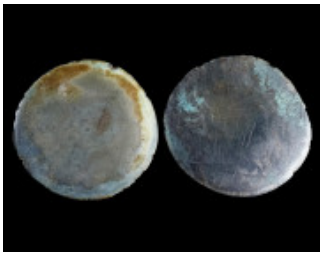
318 A EUROPEAN LATE BRONZE AGE KNIFE Circa 1000-800 BC. Bronze knife with tang. Two pin holes and remains of a third hole where tang is broken. L 11.6 cm Ex European private collection, acquired on the German art market before 2000.

35



319 A EUROPEAN LATE BRONZE AGE KNIFE Circa 1000-800 BC. Bronze knife with short tang. L 12.1 cm Ex European private collection, acquired on the German art market before 2000.

35



320 TWO EUROPEAN LATE BRONZE AGE DISKS Circa 1200-800 BC. Two convex bronze disks with crossed attachment loops on the reverse. Chipped edges. Diameter 54 mm (each) Ex Austrian private collection D. B., acquired in the 1980s-90s.

40



321 A EUROPEAN LATE BRONZE AGE BRACELET Circa 1000-800 BC. Bronze bracelet with tapered ends. Tip of one end broken. Diameter 89 mm Austrian private collection, acquired on the European art market.

50



322 A DECORATED EUROPEAN LATE BRONZE AGE BRACELET Circa 1000-800 BC. Small bronze bracelet with incised/punched decoration. Diameter 52 mm Austrian private collection, acquired on the European art market.

50



323 A EUROPEAN MIDDLE BRONZE AGE RIBBED BRACELET Circa 1600-1300 BC. Horizontally ribbed bronze bracelet. Terminals slightly damaged; one end broken and repaired (glued). Some earthen deposits. Diameter 68 mm Ex Austrian private collection D. B., acquired in the 1980s-90s.

50



324 A DECORATED EUROPEAN LATE BRONZE AGE BRACELET Circa 1200-800 BC. Bronze bracelet; D-shaped in section. With incised linear decoration. Diameter 70 mm Ex Austrian private collection D. B., acquired in the 1980s-90s.

50



325 A EUROPEAN LATE BRONZE AGE BRACELET Circa 1200-800 BC. Bronze bracelet; D-shaped in section. Minor corrosion and some (earthen) deposits. Diameter 75 mm Ex Austrian private collection D. B., acquired in the 1980s-90s.

50



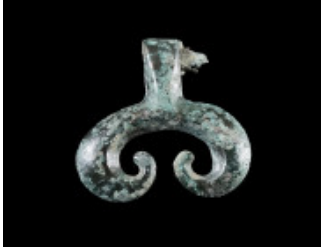
326 A EUROPEAN LATE BRONZE AGE TWISTED BRACELET Circa 1000-800 BC. Bronze bracelet with one tapering end with flattened coiled terminal; the other end plain (and apparently not broken). Diameter 70 mm Ex Austrian private collection D. B., acquired in the 1980s-90s.

50



327 A GROUP OF THREE EUROPEAN LATE BRONZE AGE RINGS/BRACELETS Circa 1000-800 BC. Three plain (arm)rings. The largest with rough surface, the patina chipped away in some places. Diameter 63-92 mm Ex Austrian private collection D. B., acquired in the 1980s-90s.

50



328 A EUROPEAN MIDDLE BRONZE AGE HEART-SHAPED PENDANT Circa 1600-1300 BC. So-called open heart-shaped pendant ('offener Herzanhänger'); the suspension loop with remains of a tube made from thin sheet metal. H 28 mm, W 30 mm Ex Austrian private collection O. H., acquired between 1990-2010.

35



329 A EUROPEAN MIDDLE/LATE BRONZE AGE PENDANT Circa 1400-1000 BC. Circular hoop with projecting triangular extension for suspension. Attractive dark green patina. H 76 mm Acquired on the European art market.

50



330 A EUROPEAN MIDDLE/LATE BRONZE AGE PENDANT Circa 1400-1000 BC. Circular hoop with projecting triangular extension for suspension. Attractive dark green patina. Edges slightly chipped; some earthen deposits. H 77 mm Acquired on the European art market.

50



331 A EUROPEAN MIDDLE/LATE BRONZE AGE PENDANT Circa 1400-1000 BC. Circular hoop with projecting triangular extension for suspension. Attractive dark green patina, chipped away in one place; minor earthen deposits. H 75 mm Acquired on the European art market.

50



332 AN IMPRESSIVELY LARGE EUROPEAN BRONZE AGE PIN Circa 13th-12th century BC. Bronze pin with separately cast biconical head. Tip bent. These large pins were most probably not intended for everyday use but may have served as part of a ceremonial costumes. L 57.5 cm Ex Gorny & Mosch, Munich, Auction 279 (2021), Lot 320. Private collection UK, before 2007.

150



333 AN IMPRESSIVELY LARGE EUROPEAN BRONZE AGE PIN Circa 13th-12th century BC. Bronze pin with separately cast biconical head. L 55 cm Ex Gorny & Mosch, Munich, Auction 279 (2021), Lot 321. Private collection UK, before 2007.

150



334 AN IMPRESSIVELY LARGE EUROPEAN BRONZE AGE PIN Circa 13th-12th century BC. Bronze pin with separately cast biconical head. L 43 cm Ex Gorny & Mosch, Munich, Auction 279 (2021), Lot 321. Private collection UK, before 2007.

150



335 AN IMPRESSIVELY LARGE EUROPEAN BRONZE AGE PIN Circa 13th-12th century BC. Bronze pin with separately cast large biconical head. L 51 cm Ex Gorny & Mosch, Munich, Auction 279 (2021), Lot 321. Private collection UK, before 2007.

150



336 A DECORATED CELTIC BRONZE BRACELET Circa 3rd-2nd century BC. A finely detailed bronze bracelet with ribbed decoration. Diameter 66 mm Austrian private collection, acquired on the European art market.

100



337 A CELTIC BRONZE KNOBBED RING ('NOPPENRING') Circa 3rd-2nd century BC. A fine small ring with three rows of densely lined up knobs. Diameter 21 mm From the collection of an Austrian art dealer, acquired on the European art market.

80



338 A ROMANO-CELTIC SILVER RING Circa 1st century AD. Silver ring of square section, tapered from the middle. The ends are overlapping and secured with two spiral twists. Diameter 34 mm
Ex Austrian private collection O. H., acquired between 1990-2010.

40



339 A ROMANO-CELTIC SILVER RING Circa 1st century AD. Silver ring of square section, tapered from the middle. The ends are overlapping and secured with two spiral twists. Diameter 35 mm
Ex Austrian private collection O. H., acquired between 1990-2010.

40



340 A ROMANO-CELTIC SILVER RING Circa 1st century AD. Silver ring of square section, tapered from the middle. The ends are overlapping and secured with two spiral twists. Diameter 34 mm
Ex Austrian private collection O. H., acquired between 1990-2010.

40



341 A DECORATED MEDIEVAL LEAD PILGRIM'S AMPULLA Circa 12th-14th century AD. The body and neck with geometric/linear decoration; a medallion on either side shows a nimbate saint next to a tree, behind him an architectural structure. These ampullae were religious souvenirs for pilgrims, filled with holy water or oil. H 58 mm Austrian private collection, acquired on the European art market.

220



342 A RICHLY DECORATED MEDIEVAL PEWTER PILGRIM'S AMPULLA Circa 13th-15th century AD. Amphora-shaped ampulla with two small handles in the shape of a bird. The body and neck with elaborate ornamental and floral decoration; surrounded by floral scrolls, two facing birds are featured on either side. H 63 mm Austrian private collection, acquired on the European art market.

220



343 A BYZANTINE LEAD PLAQUE WITH TWO ANGELS Circa 9th-12th century AD. Rectangular plaque with two angels standing facing each other and holding a cross-staff. The other side with a Greek inscription in three lines. Pierced for suspension/attachment. H 21 mm (total), W 23 mm Ex European private collection, acquired on the German art market before 2000.

35



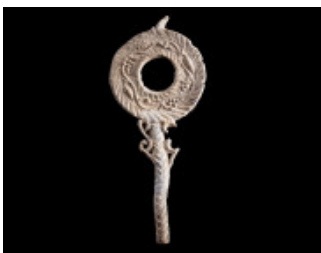
344 A BYZANTINE VOTIVE LEAD PLAQUE Circa 6th-8th century AD. Rectangular plaque with a cross and a standard/spear surrounded by further ornaments. H 39 mm Austrian private collection, acquired on the European art market.

60



345 A ROMAN MINIATURE LEAD MIRROR Circa 2nd-3rd century AD. With decorated frame and handle; the centre recessed for glass (not preserved). H 93 mm From the inventory of an Austrian art dealer, acquired on the European art market.

30



346 A ROMAN MINIATURE LEAD MIRROR Circa 2nd-3rd century AD. With decorated frame (scrollwork with fruits) and handle; the centre recessed for glass (not preserved). Slightly bent with minor damage. H 87 mm Ex Austrian private collection D. B., acquired in the 1980s-90s.

30



347 A ROMAN BRONZE BRACELET WITH ANIMAL HEADS Circa 3rd-4th century AD. Small bracelet with profiled animal-headed terminals probably depicting stylised lions or panthers. Diameter 56 mm (max.) Austrian private collection, acquired on the European art market.

90



348 TWO ROMAN BRONZE BROOCHES Circa 1st-3rd century AD. A plate brooch with a 'swirling spiral' design. Hinged, pin missing and catch plate partly broken. And a small, profiled bow brooch. With spring and pin. Diameter 34 mm, and L 29 mm Ex Austrian private collection, acquired in the 1980s-90s.

35



349 A BYZANTINE BRONZE CLOAK CLASPS WITH A BIRD Circa 10th-12th century AD. Part of a toggle fastening, decorated with a stylised bird. L 31 mm From the collection of an Austrian art dealer, acquired on the European art market.

30



350 A ROMAN BRONZE TERMINAL IN THE SHAPE OF A KANTHAROS Circa 2nd-3rd century AD. Terminal of a pin in the shape of a vertically ribbed kantharos with large volute handles. H 42 mm Ex European private collection, acquired on the German art market before 2000.

40



351 AN ANCIENT BRONZE RING BEZEL WITH EGYPTIAN SYMBOLS Circa 4th-1st century BC. Cartouche-shaped ring bezel with an Udjat Eye and a deer (?). L 21 mm From the collection of an Austrian art dealer, acquired on the European art market.

50



352 A NEOLITHIC STONE AXE HEAD Circa 4500-2500 BC. Axe head with a gentle posterior taper and lateral faceted edges. Surface and cutting edge chipped. L 10.2 cm Austrian private collection, acquired on the European art market.

120



353 A PRE-ROMAN/IRON AGE BRONZE BELL Circa 1st millennium BC. Bell with suspension loop; without clapper. Possibly Scytho-Cimmerian or influenced by their material culture. H 54 mm Austrian private collection, acquired on the European art market.

50



354 A ROMAN BRONZE SQUARE-BASED BELL Circa 1st-3rd century AD. Bell with suspension loop. Edge slightly chipped, clapper restored and reattached (glued). H 60 mm Austrian private collection, acquired on the European art market.

75



355 A SMALL ROMAN BRONZE BELL WITH FACES Circa 3rd-4th century AD. Bell with suspension loop. Decorated with faces (theatre masks?) on all four sides; without clapper. H 25 mm Ex Austrian private collection, acquired in the 1980s-90s.

80



356 TWO ANCIENT BRONZE HANGERS Probably Late Bronze Age/Early Iron Age, circa 900-700 BC. Two hangers, possibly from a sword belt. H 35 mm, W 50 mm (one loop); and 49 mm; W 45 mm (two loops) Ex Austrian private collection D. B., acquired in the 1980s-90s.

40



357 A GREEK BRONZE BOWL WITH CIRCULAR BASE Circa 4th-3rd century BC. Bowl with low circular base and flared rim. Some pitting and slightly bent; with a few repaired cracks and minor restoration. Diameter 14 cm (max.); H 5.6 cm Austrian private collection, acquired on the European art market.

250



358 AN EARLY CORINTHIAN TERRACOTTA ARYBALLOS WITH KOMASTS Circa 625-590 BC. Aryballos with four Komasts ('padded dancers'). Near the Altenburg Painter. Small round oil jar with a short neck, a flat mouth, and a small handle connecting the mouth to the shoulder of the vessel. Surface worn; part of the mouth broken and reattached, with a very small part missing. H 60 mm Ex Austrian private collection Hofrat Dr. A. O., 1920-1994.

150



359 A GROUP OF FOUR ROMANO-CELTIC SILVER RINGS Circa 1st century AD. With overlapping ends secured with two spiral twists. Somewhat bent and worn. Diameter 23-27 mm Ex Austrian private collection D. B., acquired in the 1980s-90s.

40



360 A ROMANO-CELTIC SILVER RING Circa 1st century AD. With both ends originally overlapping and secured with two spiral twists. Heavily worn and reused in antiquity. Diameter 25 mm Ex Austrian private collection O. H., acquired between 1990-2010.

30



361 A BYZANTINE LEAD RING MODEL Circa 6th-8th century AD. Lead model or form for the manufacture of rings. Outer diameter 24 mm (hoop) From the inventory of an Austrian art dealer, acquired on the European art market.

30



362 A BYZANTINE BRONZE BELT BUCKLE WITH A LION Circa 6th-8th century AD. Plate from a belt-buckle with an oval medallion depicting a lion (or panther) striding to left. Three partly broken attachment loops on the back. L 38 mm Ex European private collection, acquired on the German art market before 2000.

35



363 TWO STYLISED ANIMAL HEADED BRONZE TERMINALS Circa 1st-2nd century AD, and 5th-6th century AD. A duck headed terminal, probably from a Roman ladle. And the thorn of a Migration period buckle in the shape of a bird head (eagle?). L 53 mm, and L 38 mm Ex European private collection, acquired on the German art market before 2010.

30



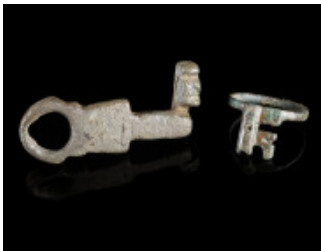
364 TWO ROMAN BRONZE BROOCHES Circa 1st-3rd century AD. An Omega brooch with profiled knob terminals. And a bow brooch with hinged pin. Diameter 36 mm (max.), and L 52 mm Ex Austrian private collection, acquired in the 1980s-90s.

35



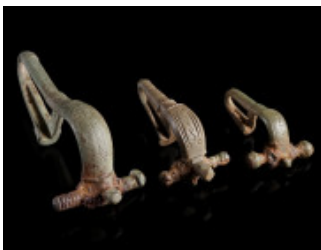
365 A ROMAN BRONZE KEY RING Circa 1st-3rd century AD. With a short projecting shank and an intricate offset bit. L 34 mm Ex Austrian private collection, acquired in the 1980s-90s.

35



366 TWO ROMAN BRONZE KEYS Circa 1st-3rd century AD. One with a head (handle) with loop and a long shank with offset bit; the other a key ring with short projecting shank and offset bit. L 45 mm; and outer Diameter 21 mm, H 13 mm Ex Austrian private collection, acquired in the 1980s-90s.

40



367 A GROUP OF THREE BYZANTINE BRONZE BROOCHES WITH BENT FOOT Circa 6th-7th century AD. Cast bow brooches with folded foot ('umgeschlagenem Fuß'); incised and punched decoration. All with iron springs, pins missing. L 34-66 mm Ex Austrian private collection, acquired in the 1980s-90s.

45



368 A GROUP OF THREE ROMAN BRONZE KNEE BROOCHES Circa 2nd-3rd century AD. Various forms (two with semicircular, one with roughly rectangular head plate). With spring and pin or hinged pin. L 30-41 mm Ex Austrian private collection, acquired in the 1980s-90s.

45



369 A ROMAN MILITARY BRONZE PHALLIC PENDANT Circa 1st century AD. Crescent-shaped pendant from a horse harness, terminating in a phallus and testes. With attachment loops for further hangers (partly broken). Rough patina. H 47 mm Ex Austrian private collection, acquired in the 1980s-90s.

35



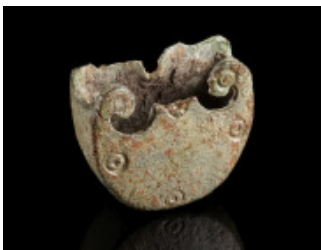
370 A ROMAN BRONZE VOLUTE KNEE BROOCH Circa 2nd-3rd century AD. Knee brooch with a volute bow design and a high transverse catch plate. The wide bow is decorated with ring-and-dot motifs and zig-zag decoration ('Tremolierstich'). Hinged, iron pin not preserved. L 34 mm Ex Austrian private collection, acquired in the 1980s-90s.

35



371 A MIGRATION PERIOD BRONZE BUCKLE Circa 5th-6th century AD. Heavy buckle with incised linear decoration. L 26 mm (total), W 33 mm Ex Austrian private collection, acquired in the 1980s-90s.

35



372 A ROMAN BRONZE SCABBARD CHAPE OF A DAGGER/KNIFE Circa 2nd-3rd century AD. Pelta-shaped chape decorated with ring-and-dot motifs. Probably from a military context. Minor part(s) missing. H 23 mm, W 27 mm Ex Austrian private collection, acquired in the 1980s-90s.

35



373 AN EARLY ROMAN BRONZE FIBULA Circa first half of the 1st century AD. So-called 'Drahtfibel vom Spätlatèneschema', as found, for example, in military camps of the Julio-Claudian era in Germany. With spring and pin. See: M. Schleiermacher, Die römischen Fibeln von Kempten-Cambodunum (Kallmünz/OPf. 1993). L 99 mm Ex Austrian private collection, acquired in the 1980s-90s.