



Sol Numismatik

Auction XXXI

3 August 2024

All prices are starting prices (EUR)
PDF catalog created by www.biddr.com



1 IONIA. Ephesos. Circa 2nd-1st centuries BC. Ae (bronze, 1.17 g, 11 mm), uncertain magistrate. Bee. Rev. Stag standing right; palm tree behind; monogram to right. Repatinated, nearly very fine.

7



2 PHOENICIA. Tyre. Circa 425-394 BC. 1/24 Shekel (silver, 0.38 g, 8 mm). Hippocamp to right; below, dolphin right. Rev. Owl standing right, head facing; crook and flail in background. Nearly very fine. Rare.

10



3 PHOENICIA. Sidon. Ba'alšillem II, circa 401-366 BC. 1/16 Shekel (silver, 0.73 g, 9 mm). Uncertain. Rev. Persian king or hero, holding dagger in his right hand, standing right, fighting lion standing left on its hind legs; all within incuse square. Good very fine.

10



4 PHOENICIA. Sidon. Ba'alšillem II, circa 401-366 BC. 1/16 Shekel (silver, 0.59 g, 9 mm). Uncertain. Rev. Persian king or hero, holding dagger in his right hand, standing right, fighting lion standing left on its hind legs; all within incuse square. Good very fine.

10



5 PHOENICIA. Sidon. Ba'alšillem II, circa 401-366 BC. 1/16 Shekel (silver, 0.44 g, 9 mm). Uncertain. Rev. Persian king or hero, holding dagger in his right hand, standing right, fighting lion standing left on its hind legs; all within incuse square. Very fine.

10



6 PHOENICIA. Sidon. Ba'alšillem II, circa 401-366 BC. 1/16 Shekel (silver, 0.86 g, 9 mm). Uncertain. Rev. Persian king or hero, holding dagger in his right hand, standing right, fighting lion standing left on its hind legs; all within incuse square. Nearly very fine.

7



7 PHOENICIA. Sidon. Ba'alšillem II, circa 401-366 BC. 1/16 Shekel (silver, 0.62 g, 9 mm). Uncertain. Rev. Persian king or hero, holding dagger in his right hand, standing right, fighting lion standing left on its hind legs; all within incuse square. Nearly very fine.

7



8 PHOENICIA. Sidon. Ba'alšillem II, circa 401-366 BC. 1/16 Shekel (silver, 0.97 g, 9 mm). Uncertain. Rev. Persian king or hero, holding dagger in his right hand, standing right, fighting lion standing left on its hind legs; all within incuse square. Very fine.

10



9 PHOENICIA. Sidon. Ba'alšillem II, circa 401-366 BC. 1/16 Shekel (silver, 0.80 g, 8 mm). Uncertain. Rev. Persian king or hero, holding dagger in his right hand, standing right, fighting lion standing left on its hind legs; all within incuse square. Nearly very fine.

7



10 PHOENICIA. Sidon. Ba'alšillem II, circa 401-366 BC. 1/16 Shekel (silver, 0.77 g, 9 mm). Uncertain. Rev. Persian king or hero, holding dagger in his right hand, standing right, fighting lion standing left on its hind legs; all within incuse square. Nearly very fine.

7



11 PHOENICIA. Sidon. Ba'alšillem II, circa 401-366 BC. 1/16 Shekel (silver, 0.69 g, 9 mm). Uncertain. Rev. Persian king or hero, holding dagger in his right hand, standing right, fighting lion standing left on its hind legs; all within incuse square. Fine.

7



12 PHOENICIA. Sidon. Ba'alšillem II, circa 401-366 BC. 1/16 Shekel (silver, 0.53 g, 10 mm). Phoenician galley left, waves below. Rev. Persian king or hero, holding dagger in his right hand, standing right, fighting lion standing left on its hind legs; all within incuse square. HGC 10, 240. Fine.

5



13 PHOENICIA. Sidon. Ba'alšillem II, circa 401-366 BC. 1/16 Shekel (silvered, 0.57 g, 9 mm). Phoenician galley left, waves below. Rev. Persian king or hero, holding dagger in his right hand, standing right, fighting lion standing left on its hind legs; all within incuse square. HGC 10, 240. Fine.

5



14 PHOENICIA. Sidon. Ba'alšillem II, circa 401-366 BC. 1/16 Shekel (silver, 0.54 g, 9 mm). Phoenician galley left, waves below. Rev. Persian king or hero, holding dagger in his right hand, standing right, fighting lion standing left on its hind legs; all within incuse square. HGC 10, 240. Nearly very fine.

7



15 PHOENICIA. Sidon. Ba'alšillem II, circa 401-366 BC. 1/16 Shekel (silver, 0.75 g, 8 mm). Uncertain. Rev. Persian king or hero, holding dagger in his right hand, standing right, fighting lion standing left on its hind legs; all within incuse square. Fine.

5



16 PHOENICIA. Sidon. Ba'alšillem II, circa 401-366 BC. 1/16 Shekel (silver, 0.68 g, 10 mm). Phoenician galley left, waves below. Rev. Persian king or hero, holding dagger in his right hand, standing right, fighting lion standing left on its hind legs; all within incuse square. HGC 10, 240. Very fine.

10



17 PHOENICIA. Sidon, 1st century BC. Ae (bronze, 6.68 g, 21 mm). Laureate head of Zeus right. Rev. [Δ - Ν / ΣΙΔΩΝΙΩΝ] Europa seated facing on bull advancing left, holding inflated veil. SNG Copenhagen 225-6. Good.

5



18 PHOENICIA. Arados. Uncertain king. Circa 400-384 BC. 1/3 Shekel (silver, 2.28 g, 11 mm). Laureate head of Ba'al-Arwad right. Rev. Galley right, above waves; Aramaic letters above. HGC 10, 40. Fine.

10



19 PHOENICIA. Arados. Uncertain king. Circa 400-384 BC. 1/16 Shekel (silver, 0.69 g, 9 mm). Laureate head of Ba'al-Arwad right. Rev. Galley right, above waves; Aramaic letters above. HGC 10, 46. Good very fine.

20



20 PHOENICIA. Arados. Uncertain king. Circa 400-384 BC. 1/16 Shekel (silver, 0.64 g, 9 mm). Laureate head of Ba'al-Arwad right. Rev. Galley right, above waves; Aramaic letters above. HGC 10, 46. Very fine.

10



21 PHOENICIA. Arados. 2nd centuries BC. Ae (bronze, 4.46 g, 16 mm). Turreted bust of Tyche right. Rev. Prow of galley left. Nearly very fine.

7



22 PHOENICIA. Arados, Circa 2nd century BC. Ae (bronze, 3.07 g, 15 mm). Turreted head of Tyche right. Rev. Athena standing left on prow of galley left; monogram to upper right. Nearly very fine.

5



23 PHOENICIA. Marathos. 220-150 BC. Tetrachalkon (bronze, 7.28 g, 22 mm). Veiled female head (Berenike II?) to right. Rev. Marathos standing left, holding aphastron in his right hand and leaning left on short column. HGC 10, 193. Very fine.

10



24 PHOENICIA. Marathos. 220-150 BC. Tetrachalkon (bronze, 10.45 g, 21 mm). Veiled female head (Berenike II?) to right. Rev. Marathos standing left, holding aphastron in his right hand and leaning left on short column. HGC 10, 193. Very fine.

10



25 Uncertain. Ar (silvered bronze, 0.69 g, 11 mm). Head of Heracles (?) right. Rev. Uncertain. Fine.

7



26 KINGS of MACEDON. Alexander III the Great, 336-323 BC. Drachm (silver, 3.73 g, 17 mm). Head of Herakles to right, wearing lion skin headdress. Rev. ΑΛΕΞΑΝΔΡΟΥ Zeus Aëtrophoros seated left, holding long scepter in his left hand and eagle in his right. Good fine.

10



27 KINGS of MACEDON. Alexander III the Great, 336-323 BC. Ae (bronze, 3.88 g, 15 mm). Salamis. Macedonian shield with gorgoneion in boss. Rev. B-A Crested helmet; caduceus and monogram below. Nearly very fine.

10



28 PTOLEMAIC KINGS of EGYPT. Ptolemy III Euergetes, 246-222 BC. Obol (bronze, 15.41 g, 27 mm), Paphos. Horned head of Zeus-Ammon right, wearing tainia with basileion. Rev. Cult statue of Aphrodite Cypria standing facing on low basis. Svoronos 1006. Repatinated, nearly very fine.

10



29 PTOLEMAIC KINGS of EGYPT. Ptolemy III Euergetes. 246-222 BC. Chalkous (bronze, 1.51 g, 11 mm), Alexandria. Head of the deified Alexander right, wearing elephant skin headdress. Rev. [ΒΑΣΙΛΕΩΣ Π [ΤΟΛΕΜ[ΑΙΟΥ] Eagle standing left on thunderbolt. Svoronos 971. Good fine.

10



30 PTOLEMAIC KINGS of EGYPT. Berenike II, circa 244/3-221 BC. Chalkous (bronze, 1.87 g, 11 mm), Herakleia by the Sea or Seleukeia in Pieria. Diademed and draped bust to right. Rev. Eagle with closed wings standing to left on thunderbolt; [ΕΥ to left]. Svoronos 1057 (Gaza or Ioppa); SNG Copenhagen -. Very fine. Very rare.

10



31 SELEUKID KINGS of SYRIA. Seleukos I Nikator, 312-281 BC. Ae (bronze, 2.10 g, 13 mm), Antioch on the Orontes. Laureate head of Apollo right. Rev. ΒΑ ΣΕ Tripod. HGC 9, 109; SC 19. Very fine. Rare.

10



32 SELEUKID KINGS of SYRIA. Seleukos I Nikator, 312-281 BC. Ae (bronze, 2.18 g, 11 mm), Antioch on the Orontes. Macedonian shield. Rev. ΒΑΣΙ ΣΕΛΕΥ Anchor, flukes upward. SC 26; HGC 9, 111. Nearly very fine. Rare.

10



33 SELEUKID KINGS OF SYRIA. Seleukos I Nikator, 312-281 BC. (bronze, 1.51 g, 12 mm), Antioch on the Orontes. Laureate head of Apollo to right. Rev. ΒΑ ΣΕ Kithara. HGC 9, 110; SC 20. Very fine. Rare.

10



34 SELEUKID KINGS of SYRIA. Seleukos I Nikator, 312-281 BC. Ae (bronze, 0.97 g, 11 mm), Antioch on the Orontes. Winged head of Medusa right. Rev. ΒΑ / ΣΕ Bull butting to right. SC 23. Repatinated, fine. Rare.

7



35 SELEUKID KINGS OF SYRIA. Antiochos I Soter, 281-261 BC. Ae (bronze, 1.59 g, 12 mm), Antioch on the Orontes. Laureate head of Zeus right. Rev. ΒΑΣΙ ANTI Thunderbolt; club, monogram above; jawbone below; c/m: anchor. SC 344. Nearly very fine. Rare.

7



36 SELEUKID KINGS OF SYRIA. Antiochos I Soter, 281-261 BC. Ae (bronze, 1.23 g, 10 mm), Antioch on the Orontes. Laureate head of Zeus right. Rev. ΒΑΣΙ ANTI Thunderbolt; club, monogram above; jawbone below. SC 344. Good fine. Rare.

7



37 SELEUKID KINGS of SYRIA. Antiochos I Soter, 281-261 BC. Ae (bronze, 4.31 g, 15 mm), Antioch on the Orontes. Diademed head to right. Rev. ΒΑΣΙΛΕΩΣ ANTIOXOY Apollo seated to left on omphalos, testing arrow and resting on grounded bow; monograms to outer left and right fields. SC 351. Nearly very fine.

7



38 SELEUKID KINGS of SYRIA. Seleukos II Kallinikos, 246-225 BC. Ae (bronze, 1.68 g, 11 mm), Uncertain mint. Laureate head of Apollo right, with long hair. Rev. ΒΑΣΙΛΕΩΣ ΣΕΛΕΥΚΟΥ Nike standing left, holding wreath. SC 740. Nearly very fine. Extremely rare.

10



39 SELEUKID KINGS of SYRIA. Seleukos II Kallinikos. 246-225 BC. Ae (bronze, 3.14 g, 15 mm), ΔΕΛ Mint, associated with Antioch. Laureate head of Apollo right. Rev. ΒΑΣΙΛΕΩΣ ΣΕΛΕΥΚΟΥ Bull butting left. SC 707; HGC 9, 349. Repatinated, fine. Rare.

7



40 SELEUKID KINGS of SYRIA. Antiochos III the Great, 222-187 BC. Ae (bronze, 4.63 g, 17 mm), uncertain Mint 60. Macedonian shield with facing gorgoneion in central boss. Rev. ΒΑΣΙΛΕΩΣ ANTIOXΟΥ Elephant walking to right; anchor above. SC 1090; HGC 9, 524. Repatinated, nearly very fine.

10



41 SELEUKID KINGS of SYRIA. Seleukos IV Philopator, 187-175 BC. Ae Serrate (bronze, 2.09 g, 13 mm), Antioch on the Orontes. Laureate head of Apollo right. Rev. ΒΑΣΙΛΕΩΣ ΣΕΛΕΥΚΟΥ Apollo seated left on omphalos, testing arrow and resting left hand on grounded bow. HGC 9, 596; SC 1319. Nearly very fine. Rare.

10



42 SELEUKID KINGS of SYRIA. Seleukos IV Philopator, 187-175 BC. Ae Serrate (bronze, 3.80 g, 16 mm), Antioch on the Orontes. Veiled and diademed bust of Laodike IV right. Rev. ΒΑΣΙΛΕΩΣ ΣΕΛΕΥΚΟΥ Elephant head left. HGC 9, 592; SC 1318. Nearly very fine.

10



43 SELEUKID KINGS of SYRIA. Seleukos IV Philopator, 187-175 BC. Ae Serrate (bronze, 4.34 g, 14 mm), Antioch on the Orontes. Veiled and diademed bust of Laodike IV right. Rev. ΒΑΣΙΛΕΩΣ ΣΕΛΕΥΚΟΥ Elephant head left. HGC 9, 592; SC 1318. Nearly very fine.

7



44 SELEUKID KINGS of SYRIA. Antiochos IV Epiphanes, 175-164 BC. Ae (bronze, 7.39 g, 17 mm), Antioch on the Orontes. Radiate and draped bust right. Rev. ΒΑΣΙΛΕΩΣ ΑΝΤΙΟΧΟΥ ΘΕΟΥ ΕΠΙΦΑΝΟΥΣ Zeus standing left, holding thunderbolt and sceptre; eagle at feet. SC 1409; HGC 9, 654. Nearly very fine.

10



45 SELEUKID KINGS of SYRIA. Antiochos IV Epiphanes, 175-164 BC. Ae (bronze, 5.79 g, 17 mm), Antioch on the Orontes. Radiate and draped bust right. Rev. ΒΑΣΙΛΕΩΣ ΑΝΤΙΟΧΟΥ ΘΕΟΥ ΕΠΙΦΑΝΟΥΣ Zeus standing left, holding thunderbolt and sceptre; eagle at feet. SC 1409; HGC 9, 654. Nearly very fine.

10



46 SELEUKID KINGS of SYRIA. Antiochos IV Epiphanes, 175-164 BC. Ae (bronze, 5.21 g, 18 mm), Antioch on the Orontes. Radiate and draped bust right. Rev. ΒΑΣΙΛΕΩΣ ΑΝΤΙΟΧΟΥ ΘΕΟΥ ΕΠΙΦΑΝΟΥΣ Zeus standing left, holding thunderbolt and sceptre; eagle at feet. SC 1409; HGC 9, 654. Nearly very fine.

7



47 SELEUKID KINGS of SYRIA. Antiochos IV Epiphanes, 175-164 BC. Ae (bronze, 4.00 g, 15 mm), Antioch. Radiate, diademed head of Antiochus IV right. Rev. ΒΑΣΙΛΕΩΣ ΑΝΤΙΟΧΟΥ ΘΕΟΥ ΕΠΙΦΑΝΟΥΣ Aegis with gorgoneion in center. HGC 9, 688; SC 1411. Nearly very fine. Rare.

10



48 SELEUKID KINGS of SYRIA. Demetrios I Soter, 162-150 BC. Ae serrate (bronze, 6.77 g, 19 mm), Antioch on the Orontes. Draped bust of Artemis to right, bow and quiver over shoulder. Rev. ΒΑΣΙΛΕΩΣ ΔΗΜΗΤΡΙΟΥ Bow and quiver. SC 1645; HGC 9, 826. Nearly very fine.

10



49 SELEUKID KINGS of SYRIA. Demetrios I Soter, 162-150 BC. Ae serrate (bronze, 9.35 g, 20 mm), Antioch on the Orontes. Draped bust of Artemis to right, bow and quiver over shoulder. Rev. ΒΑΣΙΛΕΩΣ ΔΗΜΗΤΡΙΟΥ Bow and quiver. SC 1645; HGC 9, 826. Nearly very fine.

10



50 SELEUKID KINGS of SYRIA. Alexander I Balas, 152-145 BC. Ae Serrate (bronze, 8.19 g, 22 mm), Uncertain mint, probably in northern Syria. Diademed head right. Rev. ΒΑΣΙΛΕΩΣ ΑΛΕΞΑΝΔΡΟΥ Zeus seated on high-backed throne left, holding eagle on right hand and sceptre in left; anchor below. SC 1818; HGC 9, 909. Nearly very fine. Rare.

10



51 SELEUKID KINGS of SYRIA. Alexander I Balas, 152-145 BC. Ae (bronze, 3.26 g, 14 mm), Antioch on the Orontes. Head of young Dionysus right, wreathed with ivy. Rev. ΒΑΣΙΛΕΩΣ ΑΛΕΞΑΝΔΡΟΥ Elephant standing left, monogram to right. HGC 9, 919; SC 1791. Nearly very fine.

10



52 SELEUKID KINGS of SYRIA. Antiochos VI Dionysos, 144-142 BC. Ae (bronze, 7.47 g, 20 mm), Apameia. Diademed and radiate head of Antiochos VI to right. Rev. ΒΑΣΙΛΕΩΣ ΑΝΤΙΟΧΟΥ / ΕΠΙΦΑΝΟΥΣ ΔΙΟΝΥΣΟΥ Kantharos; monogram to left. HGC 9, 1044; SC 2015. Nearly very fine.

10



53 SELEUKID KINGS of SYRIA. Antiochos VI Dionysos, 144-142 BC. Ae (bronze, 6.47 g, 18 mm), Apameia. Diademed and radiate head of Antiochos VI to right. Rev. ΒΑΣΙΛΕΩΣ ΑΝΤΙΟΧΟΥ / ΕΠΙΦΑΝΟΥΣ ΔΙΟΝΥΣΟΥ Kantharos; monogram to left. HGC 9, 1044; SC 2015. Fine.

7



54 SELEUKID KINGS of SYRIA. Antiochos VI Dionysos. 144-142 BC. Ae Serrate (bronze, 3.52 g, 16 mm). Ptolemaïs (Ake) mint (?). Radiate and diademed head right. Rev. ΒΑΣΙΛΕΩΣ ΑΝΤΙΟΧΟΥ ΕΠΙΦΑΝΟΥΣ ΔΙΟΝΥΣΟΥ Nike standing left, crowning epithets with wreath and holding palm branch. SC 2024. Repatinated, very fine.

7



55 SELEUKID KINGS of SYRIA. Antiochos VI Dionysos, 144-142 BC. Ae Serrate (bronze, 7.22 g, 22 mm), Antioch on the Orontes. Radiate and diademed head right. Rev. ΒΑΣΙΛΕΩΣ ΑΝΤΙΟΧΟΥ / ΕΠΙΦΑΝΟΥΣ ΔΙΟΝΥΣΟΥ Elephant advancing left, holding torch in trunk; to right, ΣΤΑ above star. SC 2006c; HGC 9, 1043. Nearly very fine.

7



56 SELEUKID KINGS of SYRIA. Antiochos VII Euergetes (Sidetes), 138-129 BC. Ae (bronze, 6.47 g, 18 mm), Antioch on the Orontes. Winged bust of Eros right. Rev. ΒΑΣΙΛΕΩΣ ΑΝΤΙΟΧΟΥ ΕΥΕΡΓΕΤΟΥ Head of Isis; to left, monogram; date EOP below. HGC 9, 1087; SC 2067. Nearly very fine.

7



57 SELEUKID KINGS of SYRIA. Antiochos VII Euergetes (Sidetes), 138-129 BC. Ae (bronze, 5.73 g, 19 mm), Antioch on the Orontes. Winged bust of Eros right. Rev. ΒΑΣΙΛΕΩΣ ΑΝΤΙΟΧΟΥ ΕΥΕΡΓΕΤΟΥ Head of Isis; to left, monogram; date ΘOP below. HGC 9, 1087; SC 2067. Nearly very fine.

7



58 SELEUKID KINGS of SYRIA. Antiochos VII Euergetes (Sidetes), 138-129 BC. Ae (bronze, 7.10 g, 17 mm), Antioch. Head of lion right. Rev. ΒΑΣΙΛΕΩΣ ΑΝΤΙΟΧΟΥ ΕΥΕΡΓΕΤΟΥ Club, monogram to left. SC 2068. Nearly very fine.

10



59 SELEUKID KINGS of SYRIA. Demetrios II Nikator, 129-125 BC. Ae (bronze, 6.14 g, 16 mm). Antioch on the Orontes. Laureate head of Zeus right. Rev. ΒΑΣΙΛΕΩΣ ΔΗΜΗΤΡΙΟΥ ΘΕΟΥ ΝΙΚΑΤΟΡΟΣ Nike advancing left, holding wreath and palm. SC 2170. Repatinated, very fine.

7



60 SELEUKID KINGS of SYRIA. Alexander II Zabinas, 128-122 BC. Ae serrate (bronze, 5.81 g, 18 mm), Apamea on the Orontes (?). Head of youthful Dionysos to right, wreathed with ivy. Rev. ΒΑΣΙΛΕΩΣ ΑΛΕΞΑΝΔΡΟΥ Winged Tyche standing left, wearing kalathos, holding rudder in right hand and cornucopiae in left; cornucopiae below monogram. HGC 9, 1166. SC 2242. Repatinated, nearly very fine.

7



61 SELEUKID KINGS of SYRIA. Alexander II Zabinas, 128-122 BC. Ae serrate (bronze, 6.28 g, 19 mm), Apamea on the Orontes (?). Head of youthful Dionysos to right, wreathed with ivy. Rev. ΒΑΣΙΛΕΩΣ ΑΛΕΞΑΝΔΡΟΥ Winged Tyche standing left, wearing kalathos, holding rudder in right hand and cornucopiae in left; cornucopiae below monogram. HGC 9, 1166. SC 2242. Repatinated, nearly very fine.

7



62 SELEUKID KINGS of SYRIA. Alexander II Zabinas 128-122 BC. Ae (bronze, 6.59 g, 20 mm), Antioch on the Orontes. Diademed head of Alexander II right. Rev. ΒΑΣΙΛΕΩΣ ΑΛΕΞΑΝΔΡΟΥ Dionysos standing left, holding cantharus and thyrsus. SC 2229; HGC 9, 1161. Nearly very fine.

10



63 SELEUKID KINGS of SYRIA. Antiochos IX Eusebes Philopator (Kyzikenos), 114-95 BC. Ae (bronze, 3.40 g, 15 mm), Uncertain mint. Diademed head of Antiochos IX right, beardless. Rev. ΒΑΣΙΛΕΩΣ ΑΝΤΙΟΧΟΥ ΦΙΛΟΠΑΤΟΡΟΣ Nike advancing left, holding wreath. SC 2397. Nearly very fine. Rare.

10



64 SELEUKID KINGS of SYRIA. Antiochos IX Eusebes Philopator (Kyzikenos), 114-95 BC. Ae (bronze, 5.03 g, 18 mm), Antioch. Diademed head to right. Rev. ΒΑΣΙΛΕΩΣ ΑΝΤΙΟΧΟΥ / ΦΙΛΟΠΑΤΟΡΟΣ Winged thunderbolt. SC 2364; HGC 9, 1248. Nearly very fine.

10



65 SELEUKID KINGS of SYRIA. Antiochos IX Eusebes Philopator, 114-95 BC. Ae (bronze, 0.64 g, 9 mm), uncertain mint. Diademed head right. Rev. ΒΑΣΙΛΕΩΣ ΑΝΤ[...] [Φ]ΙΛΟΠΑ[ΤΟΡΟΣ] Cornucopiae. SC -; HGC 9, -; Apparently unpolished; cf. Sol Auction 14, Lot 43. Good fine. Extremely rare and unique?

10



66 SELEUKID KINGS of SYRIA. Seleukos VI Epiphanes Nikator, circa 96-4 BC. Ae (bronze, 3.62 g, 16 mm). Diademed head to right. Rev. ΒΑΣΙΛΕΩΣ ΣΕΛΕΥΚΟΥ / ΕΠΙΦΑΝΟΥΣ ΝΙΚΑΤΟΡΟΣ Tripod. SC 2426; HGC 9, 1285. Nearly very fine. Very rare.

10



67 SELEUKID KINGS of SYRIA. Antiochos XII Dionysos. 87/6-83/2 BC. Ae (bronze, 3.66 g, 18 mm), Damascus. Diademed head right. Rev. Apollo standing left, holding laurel branch and resting elbow on tripod to right; monogram to outer left. SC 2477; HGC 9, 1331. Nearly very fine.

10



68 SYRIA, Seleucis and Pieria. Antioch. 92/1-70/69 BC. Chalkous (bronze, 2.01 g, 12 mm), year 227 = 86-85. Head of Artemis to right, wearing stephane; quiver over shoulder. Rev. ΑΝΤΙΟΧΕΩΝ ΤΗΣ ΜΗΤΡΟΠΟΛΕΩΣ Apollo standing facing, head to left, leaning on column, and holding branch or bow; headdress if Isis to left, ΖΚΣ (date) in exergue. Butcher p. 310; HGC 9, 1378 var. (date not recorded); cf. Nomos Obolos Web Auction 29, Lot 391; McAlee -. Nearly very fine.

10



69 SYRIA, Seleukis and Pieria. Antioch. Pseudo-autonomous, circa 1st century BC. Ae (bronze, 1.26 g, 10 mm). Bust of Heracles right. Rev. Club. Lindgren I 1954. Nearly very fine.

5



70 SYRIA, Seleukis and Pieria. Laodikeia ad Mare. Pseudo-autonomous issue, time of Antoninus Pius, 138-161. AE (bronze, 2.33 g, 13 mm). Draped bust of Artemis to left, wearing stephane, with quiver over shoulder. Rev. Boar standing to right; K[O] above. RPC IV 9812 (temporary). Nearly very fine. Very rare.

10



71 SYRIA, Seleukis and Pieria. Apameia. 1st century BC. Ae (bronze, 4.54 g, 17 mm). Turreted and veiled head of Tyche right. Rev. ΑΠΑΜΕΩΝ ΤΗΣ ΙΕΡΑΣ / ΚΑΙ ΑΥΤΟΝΟΜΟΥ Athena Nikephoros standing left; ΖΟΣ (date) to inner left. HGC 9, 1435. Very fine.

10



72 COELE-SYRIA. Chalkis ad Libanon. Ptolemaios. Tetrarch, circa 85-40 BC. Ae (bronze, 5.65 g, 19 mm). Dated Laureate head of Zeus right. Rev. The Dioscuri standing facing, heads turned inward, each holding spear; (date) to right. HGC 9, 1439. Repatinated, nearly very fine.

10



73 SYRIA, Seleucis and Pieria. Gabala. Circa. 1st century BC. Ae (bronze, 1.43 g, 14 mm). Helmeted bust of Athena right. Rev. ΓΑΒΑ-ΛΕΩΝ Shield over spear. RPC IV.3 6803. Repatinated, fine. Very rare.

7



74 PAMPHYLIA. Side. 1st century BC. Ae (bronze, 4.97 g, 18 mm). Head of Athena, wearing crested Corinthian helmet, right; c/m. Rev. Pomegranate on stem. Good fine.

7



75 CILICIA. Aigeai. 130-70 BC. Ae (bronze, 2.48 g, 17 mm). Helmeted head of Athena right. Rev. Goat kneeling left. Nearly very fine.

7



76 CILICIA. Hieropolis-Kastabala (?). Circa 2-1st century BC. Ae (bronze, 6.72 g, 23 mm). Draped, veiled and turreted bust of Tyche right. Rev. River-god swimming right. Fine.

7



77 NABATAEA. Rabbel II, with Gamilat, 70-106. Ae (bronze, 2.70 g, 17 mm), Petra. Jugate, laureate busts of Rabbel and Gamilat, draped, right. Rev. Crossed cornucopias. Meshorer, Nabataea 163. Nearly very fine.

7



78 NABATAEA. 1st cent. AD. Ae (bronze, 2.50 g, 15 mm), Petra. Laureate bust right. Rev. Crossed cornucopias. Nearly very fine.

7



79 KINGS of ARMENIA. Tigranes II 'the Great', 95-56 BC. Tetradrachm (silver, 15.82 g, 25 mm), Tigranokerta, circa 80-68. Draped bust of Tigranes II to right, wearing five-pointed tiara decorated with comet star between two eagles. Rev. ΒΑΣΙΛΕΩΣ - ΤΙΓΡΑΝΟΥ The Tyche of Tigranokerta, turreted and veiled, seated right on rock, holding long palm frond in her right hand; below, river-god Araxes swimming right; on rock, monogram; in field to right, monogram of AP; all within wreath. Kovacs 74. Nearly very fine.

50



80 KINGS of ARMENIA. Tigranes II 'the Great', 95-56 BC. Tetradrachm (silver, 15.59 g, 25 mm), Tigranokerta, circa 80-68. Draped bust of Tigranes II to right, wearing five-pointed tiara decorated with comet star between two eagles. Rev. ΒΑΣΙΛΕΩΣ - ΤΙΓΡΑΝΟΥ The Tyche of Tigranokerta, turreted and veiled, seated right on rock, holding long palm frond in her right hand; below, river-god Araxes swimming right; on rock, monogram; in field to right, monogram of AP (?); all within wreath. Kovacs 74. Nearly very fine.

50



81 KINGS OF ARMENIA. Tigranes II 'the Great', 95-56 BC. Tetrachalkon (bronze, 6.28 g, 21 mm). Draped bust right, wearing tiara. Rev. ΒΑΣΙΛΕΩΣ / ΤΙΓΡΑΝΟΥ Nike advancing left, holding wreath and palm frond. Kovacs 93-4. Good fine.

10



82 KINGS of ARMENIA. Tigranes II 'the Great', 95-56 BC. Tetrachalkon (bronze, 3.90 g, 18 mm). Draped bust right, wearing tiara decorated with star between two eagles. Rev. ΒΑΣΙΛΕΩΣ ΒΑΣΙΛΕΩΝ ΤΙΓΡΑΝΟΥ Tyche seated right, holding palm. Fine.

10



83 KINGS of PARTHIA. Chalkous (bronze, 1.05 g, 10 mm). Diademed and draped bust left. Rev. Turreted bust of Tyche right, palm branch to right. Nearly very fine.

7



84 KINGS of PARTHIA. Chalkous (bronze, 0.99 g, 10 mm). Diademed and draped bust left. Rev. Turreted bust of Tyche right. Nearly very fine.

7



85 KINGS of PARTHIA. Chalkous (bronze, 1.06 g, 10 mm). Diademed and draped bust left. Rev. Turreted bust of Tyche right. Nearly very fine.

7



86 KINGS of PARTHIA. Chalkous (bronze, 1.33 g, 10 mm). Diademed and draped bust left. Rev. Tyche seated left. Nearly very fine.

7



87 KINGS of PARTHIA. Chalkous (bronze, 0.94 g, 8 mm). Diademed and draped bust left. Rev. Tyche seated left. Nearly very fine.

7



88 KINGS OF COMMAGENE. Antiochos IV Epiphanes, 38-72. Ae (bronze, 3.53 g, 15 mm). Clasp hands with caduceus. Rev. KOMMAΓHNΩN Anchor. RPC I 3863; Kovacs 244. Fine. Rare.

7



89 AXUM. Ae (bronze, 0.60 g, 11 mm). Draped bust of king right. Rev. Legend around cross pattée. Fine.

7



90 Greek. Ae (bronze, 1.76 g, 14 mm). Fine.

7



91 Greek. Ae (bronze, 3.12 g, 17 mm). Head of Apollo left. Rev. Nike (?) standing right. Fine.

7



92 Greek. Ae (bronze, 2.30 g, 13 mm). Fine. Bust right. Rev. ΕΜΙΣΙ/ΑΝΟΥ (?) Tripod. Nearly very fine.

10



93 Uncertain. Ae (bronze, 0.96 g, 10 mm). Turreted bust of Tyche to right. Rev. Two ears of grain. Nearly very fine.

10



94 Greek. Ae (bronze, 3.23 g, 16 mm). Turreted head of Tyche right. Rev. Humped bull standing left. Nearly very fine.

10



95 Greek. Ae (bronze, 2.19 g, 11 mm). Head right. Rev. Apollo standing left, holding arrow and bow. Nearly very fine.

7



96 Greek. Circa 2nd-1st centuries BC. Ae (bronze, 1.62 g, 12 mm). Zebu bull standing left, head facing. Rev. Lyre. For similar, cf. SNG Copenhagen 7 (Alabanda). Nearly very fine.

10



97 Greek. Ar (bronze, 0.67 g, 8 mm). Fine.

7



98 Greek. Ae (bronze, 0.98 g, 9 mm). Turreted head of Tyche right. Rev. Uncertain deity standing on galley, right. Nearly very fine.

10



99 JUDAEA. Hasmoneans. Alexander Jannaeus, 103-76 BC. Prutah (bronze, 0.83 g, 14 mm), Jerusalem. ΒΑΣΙΛΕΩΣ ΑΛΕΞΑΝΔΡΟΥ Anchor. Rev. Yehonatan the King (Paleo-Hebrew), eight-ray star within diadem, legend between rays. Hendin 6189. Nearly very fine.

20



100 JUDAEA. Herodians. Herod III Antipas 4 BC-39 AD. 1/4 Unit (bronze, 3.96 g, 14 mm), in the name of Gaius (Caligula), Tiberias, RY 43 (39/40 AD). ΓΑΙΩ ΚΑΙCΑΡ in three lines within wreath. Rev. ΗΡΩΔΗC ΤΕ[ΤΡΑΡΧΗC] bunch of dates; Λ-ΜΓ (date) across field. Hendin 1217; RPC I 4936. Good fine. Rare.

40



101 JUDAEA. Procurators. Pontius Pilate, 26-36. Prutah (bronze, 1.67 g, 15 mm). Simpulum. Rev. Three grain ears. Meshorer 331; Hendin 6370. Good fine.

10



102 JUDAEA. Procurators. Pontius Pilate, 26-36. Prutah (bronze, 1.92 g, 15 mm), 30-1 / year 17 of Tiberius. L IZ Date in wreath. Rev. ΤΙΒΕΡΙΟΥ ΚΑΙCΑΡΟC Lituus. Hendin 6371. Nearly very fine.

10



103 JUDAEA. Procurators. Pontius Pilate, 26-36. Prutah (bronze, 1.50 g, 16 mm), 30-1 / year 17 of Tiberius. L IZ Date in wreath. Rev. ΤΙΒΕΡΙΟΥ ΚΑΙCΑΡΟC Lituus. Hendin 6371. Nearly very fine.

10



104 JUDAEA. Procurators. Pontius Pilate, 26-36. Prutah (bronze, 1.56 g, 15 mm), 30-1 / year 17 of Tiberius. L IZ Date in wreath. Rev. ΤΙΒΕΡΙΟΥ ΚΑΙCΑΡΟC Lituus. Hendin 6371. Repatinated, fine.

10



105 JUDAEA. Procurators. Pontius Pilate, 26-36. Prutah (bronze, 1.65 g, 14 mm) , 31-2 / year 18 of Tiberius. L IH Date in wreath. Rev. ΤΙΒΕΡΙΟΥ ΚΑΙCΑΡΟC Lituus. Hendin 6372. Nearly very fine.

10



106 JUDAEA. Procurators. Pontius Pilate, 26-36. Prutah (bronze, 1.85 g, 14 mm), 31-2 / year 18 of Tiberius. L IH Date in wreath. Rev. ΤΙΒΕΡΙΟΥ ΚΑΙCΑΡΟC Lituus. Hendin 6372. Nearly very fine.

10



107 JUDAEA. Herodians. Agrippa I, 37-43. Prutah (bronze, 1.99 g, 17 mm), Jerusalem. Umbrella-like canopy with fringes. Rev. Three grain ears; L ζ (date) flanking. Meshorer 120; Hendin 6274. Nearly very fine.

7



108 JUDAEA. Herodians. Agrippa I, 37-43. Prutah (bronze, 2.59 g, 17 mm), Jerusalem. Umbrella-like canopy with fringes. Rev. Three grain ears; L ζ (date) flanking. Meshorer 120; Hendin 6274. Repatinated, fine.

7



109 JUDAEA. Herodians. Agrippa I, 37-43. Prutah (bronze, 1.96 g, 16 mm), Jerusalem. Umbrella-like canopy with fringes. Rev. Three grain ears; L ζ (date) flanking. Meshorer 120; Hendin 6274. Repatinated, fine.

7



110 JUDAEA. Procurators. Antonius Felix, 52-59. Prutah (bronze, 2.04 g, 15 mm), Jerusalem. ΝΕΡΩ ΚΛΑΥ ΚΑΙCΑΡ Two crossed shields over two crossed spears. Rev. ΒΡΙΤ ΚΑΙ Palm tree, date across field. Meshorer 340; Hendin 6377. Nearly very fine.

7



111 JUDAEA. Procurators. Antonius Felix, 52-59. Prutah (bronze, 2.43 g, 17 mm), Jerusalem, struck under Claudius. ΤΙ ΚΛΑΥΔΙΟC ΚΑΙCΑΡ ΓΕΡΜ Two crossed palm branches; ΛΙΔ (date) below. Rev. ΙΟΥΛΙΑ ΑΓΡΙΠΠΙΝΑ in four lines within wreath. Hendin 1347. Repatinated, fine.

7



112 JUDAEA. Procurators. Porcius Festus 59-62. Prutah (bronze, 1.88 g, 16 mm), Jerusalem. ΝΕΡ-ΩΝΟ-C in three lines within wreath. Rev. Λ Ε ΚΑΙC-AΠΟC Palm branch. Meshorer 345; Hendin 1351. Fine.

7



113 JUDAEA. First Jewish War, 66-70. 1/8 Shekel (bronze, 4.25 g, 21 mm), Jerusalem. Omer cup. Rev. Lulav bunch flanked by etrogs. Meshorer 214; Hendin 6398. Repatinated, fine.

20



114 JUDAEA. First Jewish War, 66-70 AD. Prutah (bronze, 3.27 g, 19 mm), 67-68 / year 2. Amphora. Rev. Vine leaf on branch with tendril. Hendin 6389. Earthen repatination, very fine.

20



115 JUDAEA. First Jewish War, 66-70 AD. Prutah (bronze, 2.91 g, 17 mm) 68-69 / year 3. Amphora. Rev. Vine leaf on branch with tendril. Hendin 6392. Nearly very fine.

10



116 JUDAEA. First Jewish War, 66-70 AD. Prutah (bronze, 2.63 g, 16 mm), 67-68 / year 2. Amphora. Rev. Vine leaf on branch with tendril. Hendin 6389. Repatinated, fine.

7



117 JUDAEA. First Jewish War, 66-70 AD. Prutah (bronze, 2.76 g, 17 mm), 67-68 / year 2. Amphora. Rev. Vine leaf on branch with tendril. Hendin 6389. Repatinated, fine.

7



118 JUDAEA. First Jewish War, 66-70 AD. Prutah (bronze, 2.97 g, 17 mm), 67-68 / year 2. Amphora. Rev. Vine leaf on branch with tendril. Hendin 6389. Repatinated, fine.

7



119 JUDAEA. First Jewish War, 66-70 AD. Prutah (bronze, 2.88 g, 15 mm), 67-68 / year 2. Amphora. Rev. Vine leaf on branch with tendril. Hendin 6389. Fine.

7



120 JUDAEA. First Jewish War, 66-70 AD. Prutah (bronze, 3.41 g, 18 mm), 68-69 / year 3. Amphora. Rev. Vine leaf on branch with tendril. Hendin 6392. Nearly very fine.

10



121 JUDAEA. First Jewish War, 66-70 AD. Prutah (bronze, 2.52 g, 17 mm), 68-69 / year 3. Amphora. Rev. Vine leaf on branch with tendril. Hendin 6392. Nearly very fine.

10



122 JUDAEA. Herodians. Agrippa II, with Domitian, 83/4 AD. Ae (bronze, 3.78 g, 18 mm), Tiberias. [KAICAP] ΔΟΜΙΤΙΑΝΟC Laureate head of Domitian right. Rev. [ΕΤΟ ΚΔ ΒΑ ΑΓΡΙΠΠ] Nike standing right with foot on helmet, inscribing shield set on knee. Hendin 6339; RPC II 2256 (Caesarea Panias). Fine.

10



123 Uncertain Asian mint. Augustus, 27 BC-AD 14. Ae (bronze, 11.28 g, 26 mm). CAESAR Bare head of Augustus to right. Rev. AVGVSTVS within laurel wreath. RPC I 2235. Nearly very fine.

10



124 SYRIA, Seleukis and Pieria. Antioch. Pseudo-autonomous issue, time of Augustus, 27 BC-14 AD. Ae (bronze, 6.74 g, 20 mm), 11/12 AD. Laureate head of Zeus right. Rev. ANTIOXEΩN ΜΗΤΡΟΠΟΛΕΩΣ Ram, running right, looking back; star above, beneath, BM. RPC I 4266. Nearly very fine.

10



125 SYRIA, Seleucis and Pieria. Antioch. Nero, 54-68. Ae (bronze, 8.55 g, 25 mm). IM•NER•CLAV CAESAR Laureate head of Nero to right; before, lituus. Rev. Large S C within wreath. RPC I 4308. Good very fine.

20



126 SYRIA, Seleucis and Pieria, Antioch. Pseudo-autonomous. Time of Galba and Otho, 68-69. Ae (bronze, 2.87 g, 15 mm). Head of Apollo right, wearing tainia. Rev. ET ZIP Palm branch. McAlee 116(b); RPC 4323. Very fine.

10



127 SYRIA. Seleucis and Pieria. Otho, 69 AD. Ae (bronze, 12.36 g, 27 mm), Antioch. [IMP M OTHO CAE AVG] Laureate head right; 2x c/m. Rev. S C within laurel wreath. RPC I 4318/20. Repatinated, fair.

10



128 SYRIA. Seleucis and Pieria. Otho, 69 AD. Ae (bronze, 11.18 g, 26 mm), Antioch. [IMP M OTHO CAE AVG] Laureate head right; Legionary countermark - Legio XII Fulminata. Rev. S C within laurel wreath. Fine.

20



129 SYRIA, Seleucis and Pieria. Antioch. Vespasian, 69-79. Tetradrachm (silver, 14.00 g, 25 mm). ΑΥΤΟΚΡΑ ΚΑΙΣΑ ΟΥΕΣΠΑΣΙΑΝΟΥ Laureate head of Vespasian to right. Rev. ΕΤΟΥΚ ΝΕ[ΟΥ ΙΕΡΟΥ Α] Eagle with wings spread standing left on club, holding wreath in beak; palm frond to left, between the eagle's legs, crescent. RPC II 1953. Good fine.

20



130 SYRIA, Seleucis and Pieria. Antioch. Vespasian, 69-79. Dupondius (bronze, 10.41 g, 27 mm). Rome mint, for circulation in Syria. IMP CAES VESP AVG P M COS IIII Laureate head right; c/m. Rev. Large S • C within wreath. McAlee 366; RPC II 2006. Fine.

10



131 SYRIA, Seleucis and Pieria. Antioch. Pseudo-autonomous. Time of Nero to Vespasian, 54-79. Ae (bronze, 5.08 g, 18 mm). Antioch. ANTIOX[EQN] Veiled and draped bust of Tyche right, wearing mural crown with three turrets. Rev. ET ΔΙΡ in exergue beneath lighted and garlanded altar on stand. BMC 20. 161, 85; RPC I 4299 ; McAlee 110a/2; SNG Copenhagen 103. Very fine.

10



132 SYRIA, Seleucis and Pieria. Antioch. Domitian, 81-96. Ae (bronze, 7.38 g, 23 mm). IMP DOMITIANVS CA[ES AVG] Laureate head of Domitian to left. Rev. Large S C within laurel wreath. McAlee 412; RPC II 2024. Nearly very fine.

10



133 SYRIA, Seleucis and Pieria. Antioch. Pseudo-autonomous issue. Ae (bronze, 4.24 g, 16 mm). Laureate and draped bust of Apollo right. Rev. ANTIOXE ET [...] Lyre. Very fine.

10



134 SYRIA, Seleucis and Pieria. Antioch. Pseudo-autonomous issue. Ae (bronze, 1.53 g, 13 mm). Laureate and draped bust of Apollo right. Rev. Lyre. Very fine.

10



135 SYRIA, Seleucis and Pieria. Antioch. Pseudo-autonomous issue. Ae (bronze, 1.87 g, 13 mm). Laureate and draped bust of Apollo right. Rev. Lyre. Nearly very fine.

10



136 SYRIA, Seleucis and Pieria. Antioch. Pseudo-autonomous issue. Ae (bronze, 0.78 g, 9 mm). Laureate and draped bust of Apollo right. Rev. Lyre. Nearly very fine.

10



137 SYRIA, Seleucis and Pieria. Antioch. Pseudo-autonomous issue. Dichalkon (bronze, 1.66 g, 13 mm). Laureate and draped bust of Apollo left. Rev. Winged caduceus. Very fine.

10



138 SYRIA, Seleucis and Pieria. Antioch. Pseudo-autonomous issue. Dichalkon (bronze, 2.22 g, 13 mm). Laureate and draped bust of Apollo left. Rev. Winged caduceus. Very fine.

10



139 SYRIA, Seleucis and Pieria. Antioch. Pseudo-autonomous issue. Dichalkon (bronze, 1.71 g, 14 mm). Laureate and draped bust of Apollo left. Rev. Winged caduceus. Repatinated, nearly very fine.

7



140 SYRIA, Seleucis and Pieria. Antioch. Pseudo-autonomous issue. 2nd century AD. Ae (bronze, 1.59 g, 13 mm). Laureate and draped bust of Apollo right. Rev. Diademed bust of Artemis left, quiver over shoulder. McAlee -, cf. 158 (Artemis to right); RPC -; Sol, Auction IV, lot 87. Nearly very fine. Rare.

10



141 SYRIA, Seleucis and Pieria. Antioch. Trajan, 98-117. Half Quadrans (bronze, 1.36 g, 12 mm). Rome, for use in Syria. Laureate and draped bust of Trajan to right. Rev. S C within wreath. McAlee 526; RPC 3681. Very fine.

10



142 SYRIA, Seleucis and Pieria. Antioch. Trajan, 98-117. Half Quadrans (bronze, 0.76 g, 11 mm). Rome, for use in Syria. Laureate and draped bust of Trajan to right. Rev. S C within wreath. McAlee 526; RPC 3681. Nearly very fine.

10



143 SYRIA, Seleucis and Pieria. Antioch. Trajan, 98-117. Half Quadrans (bronze, 1.04 g, 12 mm). Rome, for use in Syria. Laureate and draped bust of Trajan to right. Rev. S C within wreath. McAlee 526; RPC 3681. Nearly very fine.

10



144 SYRIA, Seleucis and Pieria. Antioch. Trajan, 98-117. Ae (bronze, 3.99 g, 16 mm). AVT K NEP TPAIN CEB ΓEPM Laureate head of Trajan right. Rev. ΔΗΜΑΡΧ ΕΞ ΥΠΑΤ Β Winged caduceus. SNG Copenhagen 188. Good very fine.

10



145 SYRIA, Seleucis and Pieria. Antioch. Trajan, 98-117. Ae (bronze, 1.40 g, 13 mm), Rome, for circulation in Syria, 98/9. AYT KAIC NEP TPAIAN CEB ΓEPM Laureate head of Trajan to right. Rev. ΔΗΜΑΡΧ ΕΞ ΥΠΑΤ Β Laurel branch, bow and quiver. McAlee 503. RPC III 3660. Nearly very fine.

10



146 SYRIA, Seleucis and Pieria. Antioch. Pseudo-autonomous, time of Hadrian, 117-138. Trichalkon (bronze, 5.05 g, 17 mm). Turreted and draped bust of Tyche right. Rev. Ram leaping right, head left; star within crescent above, ET ZOP (date) below. McAlee 125a; RPC I 4730. Very fine.

10



147 SYRIA, Seleucis and Pieria. Antioch. Pseudo-autonomous, time of Hadrian, 117-138. Trichalkon (bronze, 5.13 g, 16 mm). Turreted and draped bust of Tyche right. Rev. Ram leaping right, head left; star within crescent above, ET ZOP (date) below; B above. McAlee 125b; RPC I 4731. Nearly very fine.

10



148 SYRIA, Seleucis and Pieria. Antioch. Pseudo-autonomous issue, time of Hadrian, 117-138. Ae (bronze, 4.61 g, 18 mm). Turreted, veiled and draped bust of Tyche right. Rev. ET ZOP Ram leaping right, head left; A and star-in-crescent above. RPC III 3730; McAlee 125a. Nearly very fine.

10



149 SYRIA, Seleucis and Pieria. Antioch. Pseudo-autonomous issue, time of Hadrian, 117-138. Ae (bronze, 2.67 g, 14 mm). Laureate and draped bust of Apollo left. Rev. ETOYC ZOP B Branch. RPC III, 3747; McAlee 130b. Very fine.

10



150 SYRIA. Seleucis and Pieria. Antioch. Marcus Aurelius, as Caesar, 139-161. Ae (bronze, 6.94 g, 24 mm). Laureate head right. Rev. S C within laurel wreath. Fine.

10



151 SYRIA, Seleucis and Pieria, Antioch (?). Pseudo-autonomous. Ae (bronze, 1.20 g, 10 mm). Head of Apollo right. Rev. branch. Nearly very fine.

10



152 SYRIA, Seleucis and Pieria. Antioch. Macrinus, 217-218. Ae (bronze, 4.21 g, 18 mm). AYT K M O CE MAKPINOC CE Laureate, draped and cuirassed bust of Macrinus to right. Rev. S C within wreath with star at top; above, Δ; below, Ε. McAlee 725. Nearly very fine.

10



153 SYRIA, Seleucis and Pieria. Antioch. Macrinus, 217-218. Ae (bronze, 4.96 g, 19 mm). AYT K M O CE MAKPINOC CE Laureate, draped and cuirassed bust of Macrinus to right. Rev. S C within wreath with star at top; above, Δ; below, Ε. McAlee 725. Nearly very fine.

10



154 SYRIA, Seleucis and Pieria, Antioch. Macrinus with Diadumenian. 217-218. Ae (bronze, 3.02 g, 19 mm). Laureate head of Macrinus to right. Rev. Bare-headed, draped and cuirassed bust of Diadumenian to right; S-C across fields. McAlee 739. Repatinated, fine.

10



155 SYRIA, Seleucis and Pieria, Antioch. Elagabalus, 218-222. Ae (bronze, 6.78 g, 20 mm). Radiate and draped bust right. Rev. Ram running right, head left; S-C across upper field, Δ above; all within laurel. Nearly very fine.

10



156 SYRIA, Seleucis and Pieria. Antioch. Trajan Decius, 249-251. Tetradrachm (billon, 10.07 g, 26 mm). [AYT K Γ ME KY ΔEK]IIOC TPA[IANOC CEB] Radiate, draped and cuirassed bust to left. Rev. Eagle standing to left on palm, with wreath in beak and wings spread; [SC in exergue]. Fair.

7



157 SYRIA, Seleukis and Pieria. Seleukia. Commodus 180-192. Ae (bronze, 3.30 g, 16 mm). [AYT AN] KOMOΔON Laureate-headed bust of Commodus, right; wearing cuirass and paludamentum. Rev. CEΛEYKEWN Temple with four columns enclosing sacred stone of Zeus Kasios. SNG Cop 406; RPC IV.3 9013 (temp). Repatinated, fine.

7



158 SYRIA, Seleucis and Pieria. Laodicea ad Mare. Marcus Aurelius with Lucius Verus, 161-169. Diassarion (bronze, 9.12 g, 23 mm). Laureate head of Marcus Aurelius left. Rev. Laureate head of Lucius Verus right. Nearly very fine.

10



159 SYRIA, Seleucis and Pieria. Laodicea ad Mare. Septimius Severus, 193-211. Ae (bronze, 8.70 g, 25 mm). Laureate head to right. Rev. IOYAN/ΛΑΟΔΙ/CEOVH M / HTPOΠ / OΛE / ΩC in six lines within wreath. BMC 83-87; SNG Copenhagen 361-362; Lindgren 2088. fine.

10



160 SYRIA, Seleucis and Pieria. Laodicea ad Mare. Elagabalus, 218-222. Ae (bronze, 4.18 g, 16 mm) IMP C M AVR ANTONINVS Laureate head right. Rev. ΛΑΔ[ICEON] Turreted and draped bust of Tyche right in distyle shrine. SNG Copenhagen 374. Very fine.

10



161 SYRIA, Cyrrhastica. Cyrrhus. Elagabalus, 218-222. Ae (bronze, 11.68 g, 28 mm). Laureate and draped bust to right. Rev. Hexastyle temple containing statue of Zeus Kataibates seated to left, holding thunderbolt and sceptre; eagle at his feet, ram running to left above temple, KYPHCTΩN in exergue. Butcher pl. 26, 20; RPC VI, 8183 (temp). Nearly very fine.

10



162 SYRIA. Caesarea Paneas. Pseudo-autonomous issue, time of Marcus Aurelius, 161-180. Ae (bronze, 1.06 g, 9 mm). Head of Pan left. Rev. Syrinx. Meshorer, Caesarea Paneas 3; Sofaer pl. 34,3; RPC 6307. Good fine. Very rare.

10



163 DECAPOLIS. Gadara. Gordian III, 238-244. Ae (bronze, 11.47 g, 24 mm). Laureate, draped and cuirassed bust right. Rev. Galley left with captain, oarsmen, and steersman on deck. Fine.

10



164 DECAPOLIS. Canata. Domitian, 81-96. (bronze, 2.04 g, 12 mm). ΔΟΜΙΤΙ ΚΑΙCΑΡ Laureate head of Domitian to left. Rev. ΚΑΝΑΤΑ / ΖΝΡ Turreted and draped bust of Tyche to left. Rosenberger 3. RPC 2092; Spijkerman 4. Nearly very fine.

7



165 Provincial. 2nd century AD. Ae (bronze, 1.22 g, 11 mm). Laureate head right. Rev. Winged caduceus between two crossed cornucopiae. Nearly very fine.

7



166 PALMYRENE. Palmyra. Pseudo-autonomous issue, circa 2nd-3rd centuries AD. Ae (bronze, 1.22 g, 13 mm). Radiate and draped bust to left (Malakbel ?). Rev. Three grain ears, crescent (?) below. Krzyzanowska Typ XIV var ; De Saulcy 31 var. (female bust), 32-33 var. Very fine. Very rare.

10



167 PALMYRENE. Palmyra. Pseudo-autonomous issue, circa 2nd-3rd centuries AD. Ae (bronze, 0.43 g, 11 mm). Head of Athena right. Rev. Astarte standing in galley facing, holding uncertain object in raised hand. Very fine.

10



168 PALMYRENE. Palmyra. Pseudo-autonomous issue, circa 2nd-3rd centuries AD. Ae (bronze, 0.40 g, 10 mm). Head of Athena right. Rev. Astarte standing in galley facing, holding uncertain object in raised hand. Very fine.

10



169 PALMYRENE. Palmyra. Pseudo-autonomous issue, circa 2nd-3rd centuries AD. Ae (bronze, 0.90 g, 10 mm). Head of Athena right. Rev. Astarte standing in galley facing, holding uncertain object in raised hand. Nearly very fine.

7



170 PALMYRENE. Palmyra. Pseudo-autonomous issue, circa 2nd-3rd c. AD. Ae (bronze, 0.32 g, 9 mm). Turreted bust of Tyche right. Rev. Astarte standing in galley facing, holding uncertain object in raised hand. Nearly very fine.

7



171 PALMYRENE. Palmyra. Pseudo-autonomous issue, circa 1st-3rd centuries AD. Ae (bronze, 0.58 g, 11 mm). Turreted bust of Tyche right. Rev. Winged caduceus between two crossed cornucopias. Nearly very fine.

7



172 PALMYRENE. Palmyra. Pseudo-autonomous issue, circa 1st-3rd centuries AD. Ae (bronze, 0.54 g, 10 mm). Helmeted head of Athena right. Rev. Winged caduceus between two crossed cornucopias. Nearly very fine.

7



173 PALMYRENE. Palmyra. Pseudo-autonomous issue, circa 2nd-3rd c. AD. Ae (bronze, 0.62 g, 10 mm). Turreted bust of Tyche right. Rev. Crossed cornucopias with caduceus. Nearly very fine.

7



174 PALMYRENE. Palmyra. Pseudo-autonomous issue, circa 2nd-3rd c. AD. Ae (bronze, 0.66 g, 10 mm). Turreted bust of Tyche right. Rev. Crossed cornucopias with caduceus. Nearly very fine.

7



175 PALMYRENE. Palmyra. Pseudo-autonomous, circa 2nd-3rd cent. AD. Ae (bronze, 0.57 g, 10 mm). Turreted head of Tyche right. Rev. Palm tree. BMC 1-2; De Saulcy pl. XXIV, 10. Nearly very fine.

10



176 PALMYRENE. Palmyra. Pseudo-autonomous, circa 2nd-3rd cent. AD. Ae (bronze, 0.99 g, 13 mm). Turreted head of Tyche right. Rev. Palm tree. BMC 1-2; De Saulcy pl. XXIV, 10. Nearly very fine.

10



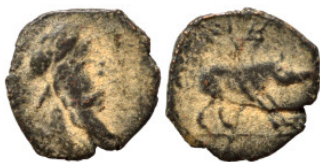
177 PALMYRENE. Palmyra (?). Pseudo-autonomous issue, circa 1st-3rd centuries AD. Ae (bronze, 0.48 g, 10 mm). TI [...] Helmeted head of Athena. Rev. Uncertain animal standing right. Nearly very fine.

10



178 PALMYRENE. Palmyra (?). Pseudo-autonomous issue, circa 1st-3rd centuries AD. Ae (bronze, 0.54 g, 9 mm). Helmeted head of Athena. Rev. Uncertain animal standing right. Fine.

10



179 PALMYRENE. Palmyra (?). Pseudo-autonomous issue, circa 1st-3rd centuries AD. Ae (bronze, 0.46 g, 10 mm). Helmeted head of Athena. Rev. Uncertain animal standing right. Fine.

10



180 PALMYRENE. Palmyra (?). Pseudo-autonomous issue, circa 1st-3rd centuries AD. Ae (bronze, 1.21 g, 11 mm). Head right. Rev. Uncertain animal standing right, star above. Fine.

10



181 Uncertain. Ae (bronze, 0.90 g, 13 mm). Male bust to right. Rev. Uncertain animal standing right. Nearly very fine.

10



182 PALMYRENE. Palmyra (?). Pseudo-autonomous issue, circa 1st-3rd centuries AD. Ae (bronze, 0.59 g, 10 mm). Male head right. Rev. Astarte standing in galley facing, holding uncertain object in raised hand. Nearly very fine. Very rare.

10



183 PALMYRENE. Palmyra. Pseudo-autonomous issue, circa 2nd-early 3rd centuries AD. Ae (bronze, 0.50 g, 9 mm). Draped bust of Athena or Roma to right, wearing crested helmet. Rev. Ram leaping left, head to right and raising forepaw; to upper right, crescent. Fine. Very rare.

10



184 Uncertain. Ae (bronze, 0.48 g, 9 mm). Bust right. Rev. Winged caduceus between two crossed cornucopiae. Nearly very fine.

7



185 Uncertain. Ae (bronze, 1.42 g, 13 mm). Turreted bust of Tyche right. Rev. Star. Nearly very fine.

10



186 COMMAGENE. Antioch ad Euphratem. Lucius Verus, 161-169. Ae (bronze, 9.07 g, 23 mm). Laureate and cuirassed bust right. ANTIOXΕΩΝ ΠΡΟΣ ΕΥΦΡΑΤΗΝ Helmeted bust of Athena right, wearing aegis. very fine RPC IV 3589 (temporary). Nearly very fine.

10



187 IONIA. Ephesus. Severus Alexander, 222-235. Ae (bronze, 6.05 g, 22 mm). M AYP AΛΕΞΑΝΔΡΟΣ Bare-headed, draped and cuirassed bust of Severus Alexander, right. Rev. ΕΦΕΣΙΩΝ Δ [ΝΕΩΚΟΡΩΝ] Hermes standing facing, head left, holding purse and caduceus. Karwiese, Ephesos 5 727; cf. Gorny&Mosch Auction 269, Lot 898. Fine. Rare.

10



188 CILICIA. Anazarbus. Volusian, 251-253. Ae (bronze, 8.18 g, 21 mm). AYT K OYΟΛΟCCIANOC CE Laureate head right. Rev. Nude Apollo standing left, legs crossed, holding branch, resting on lyre on column. Repatinated, fine.

10



189 CILICIA. Aegeae. Severus Alexander, 222-235. Ae (bronze, 11.56 g, 27 mm). Diademed, draped and cuirassed bust right; before, serpent-entwined staff. Rev. ΠΙ ΜΑΚ ΕΥΓ ΘΕΟ / ΑΙΓΑΙΩΝ Galley sailing right, with legionary eagle and standard at stern and small sail at bow; above, (date). RPC VI online 7213. Fine. Rare.

10



190 PHRYGIA. Aezani. Commodus, 177-192. Ae (bronze, 2.93 g, 18mm). AV KAI KOMOΔOC Laureate head of Commodus right. Rev. ΑΙΖΑΝΕΙΤΩΝ Cult statue of Artemis of Ephesus (Hagiotate) standing, facing, wearing kalathos. RPC IV.2, 1684. Repatinated, fine.

10



191 BITHYNIA. Nicomedia. Commodus as Caesar, 166-177. Ae (bronze, 5.86 g, 22 mm). [...] KoMoΔoC [...] Bare-headed bust right. Rev. [...] ΜΗΤΡΟ Galley with sail, left; on stern, two standards; c/m. Good fine.

10



192 GALATIA. Ancyra. Caracalla, 198-217. Ae (bronze, 4.48 g, 18 mm). [ANTΩ]NINOC AV Laureate head right. Rev. ΜΗΤΑ-ΝΚVPAC Amphora containing two palm fronds. Lindgren I 1683. Very fine. Rare.

10



193 EGYPT. Alexandria. Trajan, 98-117. Dichalkon (bronze, 1.16 g, 13 mm). Laureate head right. Rev. Elephant standing right; L ΙΓ (date) above. Köln -; Dattari (Savio) 1204; K&G 27.304; Emmett 701. Good fine.

10



194 EGYPT. Alexandria. Trajan, 98-117. Dichalkon (bronze, 1.46 g, 13 mm). Laureate head of Trajan right. Rev. L ΙÇ Jug. Very fine.

10



195 EGYPT. Alexandria. Hadrian, 117-138. Dichalkon (bronze, 1.13 g, 10 mm). Laureate bust right, with slight drapery. Rev. Pilo of the Dioskouroi surmounted by stars, LIA (date) below. RPC III 5709. Nearly very fine.

10



196 EGYPT. Alexandria. Severina, Augusta, 270-275. Tetradrachm (billon, 8.10 g, 20 mm). ΟΥΛΠ CΕΥΕΡΙΝΑ CΕΒ Diademed and draped bust right. Rev: ΕΤΟVC - Z Elpis standing facing, head left, holding flower and raising hem of skirt. Emmet 3967.7. Nearly very fine.

10



197 PHOENICIA. Berytus, 1st century AD. Ae (bronze, 0.80 g, 10 mm). [CO]L Marsyas standing left, holding wine-skin. Rev. BER Prow right. RPC 3858; SNG Copenhagen 89. Nearly very fine.

7



198 MESOPOTAMIA. Carrhae. Pseudo-autonomous issue, 2nd century AD. Ae (bronze, 0.92 g, 11 mm). Crab. Rev. Crescent on globe surmounted by star. RPC IV.3, 9574 (temporary). Repatinated, fine.

7



199 MESOPOTAMIA. Carrhae. Caracalla, 198-217. Ae (bronze, 1.73 g, 15 mm). Laureate, bearded bust right. Rev. Crescent with eight-pointed star. Nearly very fine. Rare.

10



200 MESOPOTAMIA. Rhesaena. Caracalla, 198-217. Ae (bronze, 4.75 g, 16 mm). Laureate head right. Rev. [LEG]-III to left and right of vexillum, decorated with star; eagle below. Nearly very fine. Very rare.

10



201 MESOPOTAMIA. Rhesaena. Caracalla, 198-217. Ae (bronze, 3.15 g, 15 mm). Laureate head right. Rev. [LEG]-III to left and right of vexillum, decorated with B. Nearly very fine.

7



202 MESOPOTAMIA. Edessa. Kings of Osrhoene, Ma'nu VIII Philoromaios, 167-179. Ae (bronze, 1.06 g, 11 mm). Draped bust of Ma'nu VIII to right, wearing conical tiara. Rev. 'Ma'nu King' in two lines in Syriac Eṣṭrangēlā. BMC 4 and pl. XIII, 9. RPC IV online 8048. Repatinated, fine. Rare.

10



203 MESOPOTAMIA. Edessa. Kings of Osrhoene, Ma'nu VIII Philoromaios, 167-179. Ae (bronze, 0.52 g, 9 mm). Bare head of Lucius Verus (?) to right. Rev. Legend in two lines in Syriac Eṣṭrangēlā. BMC 4 and pl. XIII, 9. RPC 6485 (temp). Fine. Rare.

10



204 MESOPOTAMIA. Edessa. Caracalla, 198-217. Ae (bronze, 2.54 g, 18 mm). Laureate head right. Rev. Turreted, veiled and draped bust of Tyche right. Nearly very fine.

7



205 MESOPOTAMIA. Edessa. Caracalla, 198-217. Ae (bronze, 3.19 g, 16 mm). Laureate head right. Rev. Turreted, veiled and draped bust of Tyche right. Nearly very fine.

7



206 MESOPOTAMIA. Edessa. Caracalla (?), 198-217 or Elagabalus (?). Ae (bronze, 5.18 g, 21 mm). Laureate bust right. Rev. Confronted busts of two Tyches. Repatinated, fine. Rare.

7



207 MESOPOTAMIA. Edessa. Elagabalus, 218-222. Ae (bronze, 6.07 g, 21 mm). Laureate, draped and cuirassed bust left, holding shield and spear. Rev. Confronted busts of two Tyches. Babelon, Edessa group 2, 51. Good fine.

10



208 MESOPOTAMIA. Edessa. Caracalla, 198-217 (or Elagabalus). Ae (bronze, 3.72 g, 17 mm). Laureate head left. Rev. ΕΔΕΚΚΑ [...] Turreted and draped bust of Tyche right. Nearly very fine.

7



209 MESOPOTAMIA. Edessa. Elagabalus, 218-222. Ae (bronze, 3.17 g, 18 mm). Bare-headed bust right. Rev. Turreted and draped bust of Tyche to right. Good fine.

7



210 MESOPOTAMIA. Edessa. Elagabalus, 218-222. Ae (bronze, 1.45 g, 15 mm). Bare-headed bust right. Rev. Turreted and draped bust of Tyche to left. Good fine.

7



211 MESOPOTAMIA. Edessa. Elagabalus (?), 218-222. Ae (bronze, 3.52 g, 16 mm). Bare-headed bust right. Rev. Turreted and draped bust of Tyche to right. Good fine.

7



212 MESOPOTAMIA. Edessa. Elagabalus, 218-222. Ae (bronze, 2.59 g, 16 mm). Radiate head of Elagabalus left. Rev. Turreted and draped bust of Tyche right. Very fine.

7



213 MESOPOTAMIA. Edessa. Severus Alexander, 222-235. Ae (bronze, 7.90 g, 24 mm). Laureate bust of Severus Alexander to right. Rev. Tyche of the City seated left on basis; to left, lighted altar; below, river god swimming to right; in field, two stars. Nearly very fine.

7



214 MESOPOTAMIA. Edessa. Elagabalus, 218-222. Ae (bronze, 3.10 g, 17 mm). Radiate head left. Rev. ΚΟΛΩ ΜΑΡ ΕΔΕΚΚΑ Veiled, turreted and draped bust of Tyche to left. RPC IV 7777 (temp). Very fine.

7



215 Uncertain (Mesopotamia). Ae (bronze, 3.03 g, 16 mm). Laureate head left. Rev. Turreted and draped bust of Tyche right. Good fine.

7



216 MESOPOTAMIA (?) Antoninus Pius (?), 138-161. Ae (bronze, 2.82 g, 15 mm). Laureate bust right. Rev. Tyche, to right. Good fine.

7



217 MESOPOTAMIA. Nisibis. Caracalla, 198-217. Ae (bronze, 8.76 g, 21 mm). Draped bust right; below, eagle facing, head right, with wings spread. Rev. Tyche seated left on rocks, holding patera. Cf. Lindgren II, 2597 var. Repatinated, fine. Rare.

7



218 MESOPOTAMIA. Nisibis. Philip I, 244-249. Ae (bronze, 12.72 g, 25 mm). ΑΥΤΟΚ Κ Μ ΙΟΥΛΙ ΦΙΛΙΠΠΟΣ ΣΕΒ Laureate, draped and cuirassed bust of Philip I to right, seen from behind. Rev. ΙΟΥ ΣΕΠ ΚΟΛΩ ΝΕCΙΒΙ ΜΗΤ Tetrastyle temple with arched pediment; within temple, turreted, veiled and draped statue of Tyche seated facing with ram leaping right above her; at her feet, river-god swimming right. RPC VIII 2787; SNG Copenhagen 242. Nearly very fine.

7



219 MESOPOTAMIA. Nisibis. Philip I, 244-249. Ae (bronze, 11.59 g, 24 mm). ΑΥΤΟΚ Κ Μ ΙΟΥΛΙ ΦΙΛΙΠΠΟΣ ΣΕΒ Laureate, draped and cuirassed bust of Philip I to right, seen from behind. Rev. ΙΟΥ ΣΕΠ ΚΟΛΩ ΝΕCΙΒΙ ΜΗΤ Tetrastyle temple with arched pediment; within temple, turreted, veiled and draped statue of Tyche seated facing with ram leaping right above her; at her feet, river-god swimming right. RPC VIII 2787; SNG Copenhagen 242. Nearly very fine.

7



220 MESOPOTAMIA. Nisibis. Philip I, 244-249. Ae (bronze, 11.00 g, 24 mm). ΑΥΤΟΚ Κ Μ ΙΟΥΛΙ ΦΙΛΙΠΠΟΣ ΣΕΒ Laureate, draped and cuirassed bust of Philip I to right, seen from behind. Rev. ΙΟΥ ΣΕΠ ΚΟΛΩ ΝΕCΙΒΙ ΜΗΤ Tetrastyle temple with arched pediment; within temple, turreted, veiled and draped statue of Tyche seated facing with ram leaping right above her; at her feet, river-god swimming right. RPC VIII 2787; SNG Copenhagen 242. Nearly very fine.

7



221 MESOPOTAMIA. Nisibis. Philip I, 244-249. Ae (bronze, 11.60 g, 27 mm). ΑΥΤΟΚ Κ Μ ΙΟΥΛΙ ΦΙΛΙΠΠΟΣ ΣΕΒ Laureate, draped and cuirassed bust of Philip I to right, seen from behind. Rev. ΙΟΥ ΣΕΠ ΚΟΛΩ ΝΕCΙΒΙ ΜΗΤ Tetrastyle temple with arched pediment; within temple, turreted, veiled and draped statue of Tyche seated facing with ram leaping right above her; at her feet, river-god swimming right. RPC VIII 2787; SNG Copenhagen 242. Nearly very fine.

7



222 MESOPOTAMIA. Nisibis. Philip I, 244-249. Ae (bronze, 11.07 g, 25 mm). ΑΥΤΟΚ Κ Μ ΙΟΥΛΙ ΦΙΛΙΠΠΟΣ ΣΕΒ Laureate, draped and cuirassed bust of Philip I to right, seen from behind. Rev. ΙΟΥ ΣΕΠ ΚΟΛΩ ΝΕCΙΒΙ ΜΗΤ Tetrastyle temple with arched pediment; within temple, turreted, veiled and draped statue of Tyche seated facing with ram leaping right above her; at her feet, river-god swimming right. RPC VIII 2787; SNG Copenhagen 242. Nearly very fine.

7



223 MESOPOTAMIA. Nisibis. Philip I, 244-249. Ae (bronze, 8.88 g, 25 mm). ΑΥΤΟΚ Κ Μ ΙΟΥΛΙ ΦΙΛΙΠΠΟΣ ΣΕΒ Laureate, draped and cuirassed bust of Philip I to right, seen from behind. Rev. ΙΟΥ ΣΕΠ ΚΟΛΩ ΝΕCΙΒΙ ΜΗΤ Tetrastyle temple with arched pediment; within temple, turreted, veiled and draped statue of Tyche seated facing with ram leaping right above her; at her feet, river-god swimming right. RPC VIII 2787; SNG Copenhagen 242. Nearly very fine.

7



224 MESOPOTAMIA. Nisibis. Philip I, 244-249. Ae (bronze, 9.11 g, 24 mm). ΑΥΤΟΚ Κ Μ ΙΟΥΛΙ ΦΙΛΙΠΠΟΣ ΣΕΒ Radiate and cuirassed bust left, holding spear and shield decorated with quadriga. Rev. ΙΟΥ ΣΕΠ ΚΟΛΩ ΝΕCΙΒΙ ΜΗΤ Tyche seated facing; above, ram (Aries) leaping right, head left; all within tetrastyle temple; below, river god swimming right, head facing.. RPC VIII 3080. Good very fine.

7



225 MESOPOTAMIA. Nisibis. Philip I, 244-249. Ae (bronze, 10.35 g, 25 mm). ΑΥΤΟΚ Κ Μ ΙΟΥΛΙ ΦΙΛΙΠΠΟΣ ΣΕΒ Radiate and cuirassed bust left, holding spear and shield decorated with quadriga. Rev. ΙΟΥ ΣΕΠ ΚΟΛΩ ΝΕCΙΒΙ ΜΗΤ Tyche seated facing; above, ram (Aries) leaping right, head left; all within tetrastyle temple; below, river god swimming right, head facing.. RPC VIII 3080. Good very fine.

7



226 MESOPOTAMIA. Nisibis. Philip I, 244-249. Ae (bronze, 12.21 g, 26 mm). ΑΥΤΟΚ Κ Μ ΙΟΥΛΙ ΦΙΛΙΠΠΟΣ ΣΕΒ Radiate and cuirassed bust left, holding spear and shield decorated with quadriga. Rev. ΙΟΥ ΣΕΠ ΚΟΛΩ ΝΕCΙΒΙ ΜΗΤ Tyche seated facing; above, ram (Aries) leaping right, head left; all within tetrastyle temple; below, river god swimming right, head facing.. RPC VIII 3080. Fine.

7



227 MESOPOTAMIA. Nisibis. Philip II, 247-249. Ae (bronze, 13.26 g, 26 mm). ΑΥΤΟΚ Κ Μ ΙΟΥΛΙ ΦΙΛΙΠΠΟΣ ΣΕΒ Radiate and cuirassed bust left. Rev. ΙΟΥ ΣΕΠ ΚΟΛΩ ΝΕCΙΒΙ ΜΗΤ Tyche seated facing; above, ram (Aries) leaping right, head left; all within tetrastyle temple; below, river god swimming right, head facing. Nearly very fine.

7



228 MESOPOTAMIA. Nisibis. Philip II, 247-249. Ae (bronze, 9.61 g, 25 mm). ΑΥΤΟΚ Κ Μ ΙΟΥΛΙ ΦΙΛΙΠΠΟΣ ΣΕΒ Radiate and cuirassed bust left. Rev. ΙΟΥ ΣΕΠ ΚΟΛΩ ΝΕCΙΒΙ ΜΗΤ Tyche seated facing; above, ram (Aries) leaping right, head left; all within tetrastyle temple; below, river god swimming right, head facing. Nearly very fine.

7



229 MESOPOTAMIA. Nisibis. Philip II, 247-249. Ae (bronze, 10.36 g, 24 mm). ΑΥΤΟΚ Κ Μ ΙΟΥΛΙ ΦΙΛΙΠΠΟΣ ΣΕΒ Radiate and cuirassed bust left. Rev. ΙΟΥ ΣΕΠ ΚΟΛΩ ΝΕCΙΒΙ ΜΗΤ Tyche seated facing; above, ram (Aries) leaping right, head left; all within tetrastyle temple; below, river god swimming right, head facing. Nearly very fine.

7



230 MESOPOTAMIA. Nisibis. Philip II, 247-249. Ae (bronze, 9.89 g, 24 mm). ΑΥΤΟΚ Κ Μ ΙΟΥΛΙ ΦΙΛΙΠΠΟΣ ΣΕΒ Radiate and cuirassed bust left. Rev. ΙΟΥ ΣΕΠ ΚΟΛΩ ΝΕCΙΒΙ ΜΗΤ Tyche seated facing; above, ram (Aries) leaping right, head left; all within tetrastyle temple; below, river god swimming right, head facing. Nearly very fine.

7



231 MESOPOTAMIA. Nisibis. Philip II, 247-249. Ae (bronze, 11.45 g, 26 mm). ΑΥΤΟΚ Κ Μ ΙΟΥΛΙ ΦΙΛΙΠΠΟΣ ΣΕΒ Radiate and cuirassed bust left. Rev. ΙΟΥ ΣΕΠ ΚΟΛΩ ΝΕCΙΒΙ ΜΗΤ Tyche seated facing; above, ram (Aries) leaping right, head left; all within tetrastyle temple; below, river god swimming right, head facing. Nearly very fine.

7



232 MESOPOTAMIA. Nisibis. Philip II, 247-249. Ae (bronze, 12.47 g, 26 mm). ΑΥΤΟΚ Κ Μ ΙΟΥΛΙ ΦΙΛΙΠΠΟΣ ΣΕΒ Radiate and cuirassed bust left. Rev. ΙΟΥ ΣΕΠ ΚΟΛΩ ΝΕCΙΒΙ ΜΗΤ Tyche seated facing; above, ram (Aries) leaping right, head left; all within tetrastyle temple; below, river god swimming right, head facing. Nearly very fine.

7



233 MESOPOTAMIA. Nisibis. Philip II, 247-249. Ae (bronze, 8.63 g, 25 mm). ΑΥΤΟΚ Κ Μ ΙΟΥΛΙ ΦΙΛΙΠΠΟΣ ΣΕΒ Radiate and cuirassed bust left. Rev. ΙΟΥ ΣΕΠ ΚΟΛΩ ΝΕCΙΒΙ ΜΗΤ Tyche seated facing; above, ram (Aries) leaping right, head left; all within tetrastyle temple; below, river god swimming right, head facing. Nearly very fine.

7



234 MESOPOTAMIA. Nisibis. Otacilia Severa, 244-249. Ae (bronze, 8.12 g, 25 mm). Draped bust right, wearing stephane, set on crescent. Rev. Statue of Tyche, veiled and turreted, seated facing; above, ram leaping right, head left; all within tetrastyle temple with arched central bay; below, river god swimming right. RPC VIII Online 2575; SNG Copenhagen 244. Nearly very fine.

7



235 MESOPOTAMIA. Nisibis. Otacilia Severa, 244-249. Ae (bronze, 9.05 g, 24 mm). Draped bust right, wearing stephane, set on crescent. Rev. Statue of Tyche, veiled and turreted, seated facing; above, ram leaping right, head left; all within tetrastyle temple with arched central bay; below, river god swimming right. RPC VIII Online 2575; SNG Copenhagen 244. Nearly very fine.

7



236 MESOPOTAMIA. Nisibis. Otacilia Severa, 244-249. Ae (bronze, 9.63 g, 24 mm). Draped bust right, wearing stephane, set on crescent. Rev. Statue of Tyche, veiled and turreted, seated facing; above, ram leaping right, head left; all within tetrastyle temple with arched central bay; below, river god swimming right. RPC VIII Online 2575; SNG Copenhagen 244. Nearly very fine.

7



237 LACONIA. Las. Septimius Severus, 193-211. Assarion (bronze, 4.30 g, 20 mm). Laureate head right. Rev. ΑΑ-ΩΝ Herakles standing left, resting his right hand on his club and holding his lion skin with his left. NCP p. 64, 1. SNG Copenhagen 621; BCD Peloponnesos 988. Very fine. Very rare.

10



238 MESSENIA. Mothone. Julia Domna, 193-217. Assarion (bronze, 3.44 g, 20 mm). Draped bust right. Rev. [MOΘΩN]AIΩN Athena standing left, holding phiale (?) and scepter. Fine. Very rare.

10



239 MESSENIA. Mothone. Caracalla, 198-217. Assarion (bronze, 4.91 g, 21 mm). Laureate, draped and cuirassed bust right. Rev. MOΘΩ-NAIΩN Athena standing right, holding phiale and scepter. Nearly very fine. Rare.

10



240 MESSENIA. Mothone. Caracalla, 198-217. Assarion (bronze, 4.49 g, 22 mm). Laureate, draped and cuirassed bust right. Rev. [MOΘΩ]-NAIΩN Athena standing right, holding phiale and scepter. Repatianted, nearly very fine. Rare.

10



241 MESSENIA. Thuria (?). Septimius Severus, 193-211. Diassarion (bronze, 5.13 g, 22 mm). Laureate, draped and cuirassed bust right. Rev. [ΘOVPIATΩN / Λ - A]? Tyche standing facing, head left, holding phiale and cornucopia. Fine. Rare.

10



242 MESSENIA. Thuria. Caracalla, 198-217. Assarion (bronze, 3.67 g, 22 mm). Laureate, draped and cuirassed bust right. Rev. [ΘOVPIATΩN / Λ - A] Tyche standing left. Fine. Very rare.

7



243 MESSENIA. Thuria. Geta, as Caesar, 197-209. Assarion (bronze, 4.16 g, 21 mm). Bare-headed, draped and cuirassed bust right. Rev. ΘOVPIATΩN / Λ - A Tyche standing left. Fine. Very rare.

10



244 MESSENIA. Asine. Julia Domna, Augusta, 193-217. Diassarion (bronze, 5.61 g, 21 mm). Draped bust right. Rev. ACIN-AIQN Asclepius standing facing, head left, leaning on serpent-entwined staff. BCD Peloponnesos 774.9. Nearly very fine. Very rare.

30



245 PHLIASIA. Phlius. Julia Domna, Augusta, 193-217. Assarion (bronze, 4.07 g, 21 mm). Draped bust right. Rev. Aphrodite (?) standing, facing, raising right hand. Repatinated, nearly very fine. Cf. for rev. Geta, NCP, pp. 158-159, 5a, pl. FF, XX. Extremely rare and unpublished?

30



246 Uncertain. Septimius Severus, 193-211. Assarion (bronze, 4.58 g, 22 mm). Laureate, draped and cuirassed bust right. Rev. Tyche standing facing, head left. Nearly very fine.

10



247 Uncertain. Julia Domna, Augusta, 193-217. Assarion (bronze, 4.07 g, 21 mm). Draped bust right. Rev. Athena standing facing, holding scepter. Fine.

7



248 Uncertain. Julia Domna, Augusta, 193-217. Assarion (bronze, 4.84 g, 24 mm). Draped bust right. Rev. Dionysos standing left, holding phiale in his right hand and thyrsos with his left. Fine.

7



249 Uncertain. Caracalla, 198-217 or Geta ?. Assarion (bronze, 5.38 g, 20 mm). Laureate bust right. Rev. Hercules standing right, holding lion skin and club. Fine.

7



250 Provincial. Antoninus Pius, 138-161. Ae (bronze, 8.56 g, 25 mm). Laureate bust right. Rev. Cult statue of Artemis Anaitis (?) standing, facing. Fine.

7



251 Peloponnesos. Uncertain city. Ae (bronze, 3.72 g, 22 mm).
Fine.

7



252 Provincial. Uncertain. Ae (bronze, 0.56 g, 10 mm). Turreted
bust of Tyche right. Rev. Tyche (?) seated left; Legend around.
Very fine.

7



253 Provincial. Uncertain. Ae (bronze, 0.61 g, 10 mm).
Uncertain bust right. Rev. Tyche (?) seated right; Legend around.
Very fine.

7



254 Provincial. Uncertain. Ae (bronze, 4.73 g, 18 mm). Laureate
bust right. Rev. Quadriga galloping right. Good fine.

7



255 Provincial. Marcus Aurelius. 161-180. Ae (bronze, 6.30 g, 20
mm). Laureate bust right. Rev. Distyle temple with crescent in
pediment, uncertain helmeted deity standing left, holding sceptre
(?). Good fine.

7



256 Provincial. Ae (bronze, 12.11 g, 31 mm). Laureate bust
right. Rev. Zeus standing left, holding sceptre and Victory; 2x
c/m. Nearly very fine.

10



257 Provincial. Ae (bronze, 7.42 g, 21 mm). Fine.

7



258 Provincial. Ae (bronze, 0.74 g, 14 mm). Bust right. Rev. S C within wreath. Fine.

7



259 Nero Claudius Drusus. Imitative Sestertius (bronze, 13.45 g, 31 mm), Uncertain mint, copying Rome. NERO CLAUDIVS DRVSVS GERMANICVS IMP Bare head left. Rev. TI CLAVDIVS CAESAR AVG P M TR P IMP Emperor seated to left on curule chair, holding branch, arms at base; SC below. For prototype, cf. RIC I 93 (Claudius). Good fine.

10



260 Vespasian, 69-79. "Judaea Capta" issue. Denarius (silver, 3.30 g, 18 mm), Rome. IMP CAESAR VES[PASIANVS] AVG Laureate head right. Rev. [IVDAEA] Judaea seated right, with head resting upon hand in attitude of mourning; trophy to left. RIC II 2; RSC 226. Nearly very fine.

20



261 Vespasian, 69-79. Quadrans (bronze, 2.80 g, 17 mm), Rome mint, for Syria. IMP VESP AVG Laureate head of Vespasian to left. Rev. P M TR POT PP Winged caduceus. RIC 1569; RPC II 1989. Nearly very fine.

10



262 Trajan, 98-117. As (orichalcum, 6.92 g, 23 mm), Rome, for use in Syria. IMP CAES NER TRAIANO OPTIMO AVG GERM Radiate bust of Trajan to right, with slight drapery on his left shoulder. Rev. DAC PARTHICO P M TR POT XX COS VI P P around large S C within wreath. RIC 644. Nearly very fine.

10



263 Trajan, 98-117. Semis (bronze, 3.76 g, 20 mm), Rome, for use in Syria. IMP CAES NER TRAIANO OPTIMO AVG GERM Radiate bust of Trajan to right, with slight drapery on his left shoulder. Rev. DAC PARTHICO P M TR POT XX COS VI P P around large S C within wreath. RIC 649. Very fine.

10



264 Hadrian, 117-138. Dupondius (bronze, 8.55 g, 24 mm), Rome. HADRIANVS AVGVSTVS Radiate bust right, with slight drapery. Rev. COS III / S C Pegasus flying right. RIC 746. Good fine.

10



265 Julia Domna, Augusta, 193-217. Denarius (silver, 2.58 g, 18 mm), Rome. IVLIA AVGVSTA Draped bust of Julia Domna to right. Rev. PIETAS AVGG Pietas, veiled, standing front, head to left, sacrificing out of patera held over altar with her right hand and holding incense-box in her left. RIC 572. Nearly very fine.

10



266 Julia Maesa, Augusta, 218-224/5. »denarius« (bronze, 2.75 g, 18 mm), contemporary imitation. IVLIA MAESA AVGG Draped bust of Julia Maesa to right. Rev. IVNO REGINA Diademed and veiled Juno standing facing, head left, holding sceptre and patera. Nearly very fine.

10



267 Severus Alexander, 222-235. Limes denarius (bronze, 2.50 g, 19 mm), uncertain mint. Laureate, draped and cuirassed bust right. Rev: SALVS PVBLICA. Salus seated left on throne, feeding serpent rising from altar to left. Nearly very fine.

10



268 Severus Alexander, 222-235. Limes Denarius or contemporary imitation (bronze, 2.64 g, 20 mm), uncertain mint. IMP C M AVR SEV ALEXAND AVG. Laureate bust right. Rev. P M TR P II COS Tyche standing left. Fine.

7



269 Gallienus, 253-268. Antoninianus (bronze, 3.66 g, 21 mm), Asia minor. GALLIENVS AVGG Radiate draped bust right. Rev. SOLI INVICTO Sol standing left, right hand raised, left hand holding globe; PXV in exergue. RIC 611. Nearly very fine.

7



270 Gallienus, 253-268. Antoninianus (billon, 2.47 g, 21 mm), Antioch. GALLIENVS AVG Radiate and cuirassed bust of Gallienus to right. Rev. LVNA LVCIF / PXV Diana advancing right, holding lighted torch with both hands. RIC 609. Nearly very fine.

7



271 Claudius II Gothicus, 268-270. Antoninianus (bronze, 2.68 g, 19 mm). IMP C CLAVDIVS AVG Radiate, draped and cuirassed bust right. Rev. AEQVITAS AVG Aequitas standing left, holding cornucopia and scales. Fine.

7



272 Divus Claudius II Gothicus, died 270. Follis (bronze, 3.36 g, 19 mm). DIVO CLAVDIO OPTIMO IMP Veiled and laureate head of Divus Claudius II Gothicus right. Rev. REQVIES OPTIMORVM MERITORVM Emperor seated left on curule chair, raising arm and holding short scepter. Nearly very fine.

7



273 Aurelian, 270-275. Radiate (bronze, 3.19 g, 20 mm), Cyzicus. IMP AVRELIANVS AVG Radiate and cuirassed bust right. Rev. RESTITVT•ORIENTIS Emperor standing left, holding scepter and raising female figure kneeling right, with modius on head; C(star)P in exergue. RIC 351. Good fine.

7



274 Aurelian, with Vabalathus, 270-275. Antoninianus (bronze, 3.41 g, 20 mm), Antioch. IMP C AVRELIANVS AVG Radiate and cuirassed bust of Aurelian right. Rev. VABALATHVS V C R IM D R Laureate, diademed, draped, and cuirassed bust of Vabalathus right. Nearly very fine.

10



275 Aurelian, with Vabalathus, 270-275. Antoninianus (bronze, 3.36 g, 20 mm), Antioch. IMP C AVRELIANVS AVG Radiate and cuirassed bust of Aurelian right. Rev. VABALATHVS V C R IM D R Laureate, diademed, draped, and cuirassed bust of Vabalathus right. Nearly very fine.

10



276 Probus, 276-282. Antoninianus (bronze, 4.61 g, 22 mm), Antioch. IMP C M AVR PROBVS P F AVG Radiate and cuirassed bust to right. Rev. CLEMENTIA TEMP Emperor standing right, holding sceptre, receiving globe from Jupiter standing left holding sceptre; S • between, XXI in exergue. RIC 922. Nearly very fine.

7



277 Probus, 276-282. Antoninianus (bronze, 2.85 g, 22 mm), Rome. IMP C M AVR PROBVS AVG Radiate and cuirassed bust of Probus to right. Rev. AEQVITAS AVG / Γ / XXI Aequitas standing front, head to left, holding scales in her right hand and cornucopiae in her left. RIC 150. Repatinated, very fine.

10



278 Numerian, 283-284. Antoninianus (bronze, 3.62 g, 20 mm), Cyzicus. IMP C NVMERIANVS P F AVG Radiate, draped and cuirassed bust of Numerian to right. Rev. CLEMENTIA TEMP Numerian standing right, holding scepter in right hand, receiving Victory on globe from Jupiter standing left, holding long scepter in right hand; S below, XXI in exergue. RIC 463. Very fine.

7



279 Diocletian, 284-305. Antoninianus (bronze, 2.75 g, 21 mm). Ticinum. IMP C VAL DIOCLETIANVS AVG Radiate and cuirassed bust to right. Rev. HERCVLI CONSERVAT Hercules standing to right, leaning on club with lion's skin on rock; TXXIT in exergue. RIC 215. Repatinated, nearly very fine.

7



280 Diocletian, 284-305. Ae (bronze, 3.39 g, 20 mm), Antioch. IMP C C VAL DIOCLETIANVS P F AVG Radiate, draped and cuirassed bust to right. Rev. CONCORDIA MILITVM Emperor standing to right, holding scepter and receiving Victory on globe from Jupiter, standing to left; A between, XXI in exergue. RIC 322. Nearly very fine.

7



281 Maximianus, first reign, 286-305. Follis (bronze, 3.44 g, 20 mm), Cyzicus. IMP C MA MAXIMIANVS PF AVG Radiate draped bust right. Rev. CONCORDIA MILITVM Emperor standing right receiving Victory on globe from Jupiter, KΔ in lower centre. Nearly very fine.

7



282 Severus II, as Caesar, 305-306. Ae (bronze, 8.81 g, 26 mm), Aquileia. SEVERVS NOB CAES Laureate head right. Rev. VIRTVS AVGG ET CAESS N N Mars advancing to right, holding spear and trophy over shoulder; AQΓ in exergue. RIC VI 70a. Repatinated, fine.

7



283 Constantine I, 307/310-337. Follis (bronze, 2.27 g, 20 mm), Rome. IMP CONSTANTINVS P F AVG Laureate, draped and cuirassed bust of Constantine I to right. Rev. SOLI INV-ICTO COMITI / R Q Sol, nude but for chlamys, standing front, head to left, raising his right hand in salute and holding globe in his left; in field to left, wreath. RIC 97. Nearly very fine.

7



284 Constantine I, 307/310-337. Follis (bronze, 2.52 g, 19 mm), Rome. FL VAL CONSTANTINVS AVG Radiate, draped and cuirassed bust of Constantine I to right, seen from behind. Rev. VIRT EX-ERCIT GALL / R T Virtus standing front, head to left, holding spear in her right hand and parazonium in her left; across field, X-VI. RIC 360. Nearly very fine.

7



285 Constantine I, 307/310-337. Follis (bronze, 2.40 g, 18 mm), Antioch. CONSTANTINVS MAX AVG Rosette-diadem, draped, cuirassed bust right. Rev. GLORIA EXERCITVS Two soldiers standing facing each other, each holding spear and resting shield on ground, two standards between; SMANΓ in exergue. RIC 86. Very fine.

7



286 Constantine I, 307/310-337. Follis (bronze, 1.70 g, 16 mm), Antioch. CONSTANTINVS MAX AVG Rosette-diadem, draped, cuirassed bust right. Rev. GLORIA EXERCITVS Two soldiers standing facing each other, each holding spear and resting shield on ground, standard between; SMANF in exergue. Very fine.

7



287 Constantine I, 307/310-337. Follis (bronze, 2.84 g, 18 mm), Antioch. CONSTANTINVS MAX AVG Rosette-diadem, draped, cuirassed bust right. Rev. GLORIA EXERCITVS Two soldiers standing facing each other, each holding spear and resting shield on ground, two standards between; SMANA in exergue. RIC 86. Very fine.

7



288 Constantine I, 307/310-337. Follis (bronze, 3.34 g, 19 mm), Antioch. CONSTANTINVS AVG Rosette-diademed head to right. Rev. PROVIDENTIAE AVGG Camp gate with two turrets, no doors/pellet; star above, SMANTS in exergue. Repatinated, very fine.

7



289 Constantine I, 307/310-337. Follis (bronze, 3.00 g, 18 mm), Siscia. CONSTANTINVS AVG Laureate head to right. Rev. D N CONSTANTINI MAX AVG Laurel wreath enclosing VOT XX in two lines; ASIS(branch) in exergue. RIC VII 174. Very fine.

7



290 Constantine I, 307/310-337. Follis (bronze, 3.46 g, 21 mm), Treveri. CONSTANTINVS P F AVG Laureate and cuirassed bust to right. Rev. SOLI INVICTO COMITI Sol standing to left, raising hand and holding globe; S-F across fields, (mintmark) in exergue. Nearly very fine.

7



291 Constantine I, 307/310-337. Follis (bronze, 3.72 g, 18 mm). CONSTANTINVS P F AVG Laureate and cuirassed bust to right. Rev. SOLI INVICTO COMITI Sol standing to left, raising hand and holding globe; P-R across fields, (mintmark) in exergue. Nearly very fine.

7



292 Galeria Valeria, Augusta, 308-311. Follis (bronze, 5.78 g, 23 mm), Antioch. GAL VALE-RIA AVG Diademed and draped bust of Galeria Valeria to right. Rev. VENERI V-ICTRICI Star above altar / H Venus standing front, head to left, holding apple in her right hand and raising drapery over shoulder with her left; to left, altar; ANT in exergue. RIC 138. Very fine.

10



293 Maximinus II, 310-313. Follis (bronze, 4.68 g, 21 mm), Antioch. IMP C GAL VAL MAXIMINVS P F AVG Laureate head right. Rev. GENIO AVGVSTI Genius standing left, holding head of Sol and cornucopia; star in left field, Δ in right. ANT in exergue. Repatinated, very fine.

7



294 Time of Maximinus II, 310-313. Follis (bronze, 1.93 g, 15 mm), 'Persecution' issue, Antioch. GENIO ANTIOCHENI Tyche of Antiochia seated facing on rocks; river-god Orontes swimming below. Rev. APOLLONI SANCTO, Δ to right; Apollo standing front, head to left, holding patera in his right hand and lyre in his left; SMA below. McAlee 170d; Van Heesch, Last 3a. Nearly very fine.

7



295 Time of Maximinus II, 310-313. Follis (bronze, 1.82 g, 16 mm), 'Persecution' issue, Antioch. GENIO ANTIOCHENI Tyche of Antiochia seated facing on rocks; river-god Orontes swimming below. Rev. APOLLONI SANCTO, E to right; Apollo standing front, head to left, holding patera in his right hand and lyre in his left; SMA below. McAlee 170d; Van Heesch, Last 3a. Nearly very fine.

7



296 Crispus, as Caesar, 316-326. Follis (bronze, 3.47 g, 19 mm), Antioch. FL IVL CRISPVS NOB CAES Laureate, draped and cuirassed bust to left. Rev. PROVIDENTIAE CAESS Camp gate with six rows and two turrets; star above, SMANTZ in exergue. RIC VII 64. Nearly very fine.

7



297 Constantine II, as Caesar, 316-337. Follis (bronze, 2.01 g, 18 mm), Antioch. Laureate, draped and cuirassed bust of Constantine II to left. Rev. CONSTAN/TINVS / CAESAR / SMANTS in four lines; above, star. RIC 54. Very fine.

10



298 Constantine II, as Caesar, 316-337. Follis (bronze, 3.26 g, 18 mm), Rome. CONSTANTINVS IVN NOB C Laureate, draped and cuirassed bust right. Rev. ROMAE AETERNAE Roma seated right on shield, holding another shield inscribed X/V; P - R across, RS in exergue. RIC 156. Very fine.

10



299 Helena, 324-328/30. Follis (bronze, 1.56 g, 14 mm), Constantinople. FL IVL HE-LENAE AVG Diademed and draped bust of Helena to right. Rev. PAX PVBLICA Pax standing front, head to left, holding branch in her right hand and scepter with her left; CONSE in exergue. RIC 33. Nearly very fine.

7



300 Helena, 324-328/30. Follis (bronze, 1.52 g, 14 mm), Constantinople. FL IVL HE-LENAE AVG Diademed and draped bust of Helena to right. Rev. PAX PVBLICA Pax standing front, head to left, holding branch in her right hand and scepter with her left; CONSE in exergue. RIC 33. Nearly very fine.

7



301 Commemorative Series, 330-354. Follis (bronze, 2.28 g, 18 mm), Antioch. CONSTAN-TINOPOLIS Helmeted and mantled bust of Constantinopolis to left, with scepter over shoulder. Rev. Victory standing left, her right foot set on prow, holding scepter in right hand, shield in left; SMANI in exergue. RIC 92. Very fine.

10



302 Commemorative Series, 330-354. Follis (bronze, 2.76 g, 18 mm), Antioch. CONSTAN-TINOPOLIS Helmeted and mantled bust of Constantinopolis to left, with scepter over shoulder. Rev. Victory standing left, her right foot set on prow, holding scepter in right hand, shield in left; SMANI in exergue. RIC 92. Very fine.

10



303 Commemorative Series, 330-354. Follis (bronze, 2.01 g, 17 mm), Antioch. CONSTAN-TINOPOLIS Helmeted and mantled bust of Constantinopolis to left, with scepter over shoulder. Rev. Victory standing left, her right foot set on prow, holding scepter in right hand, shield in left; SMANI in exergue. RIC 92. Very fine.

10



304 Commemorative Series, 330-354. Follis (bronze, 3.00 g, 16 mm), Antioch. VRBS ROMA Helmeted and mantled bust of Roma to left. Rev. She-wolf standing left, suckling Romulus and Remus; above, two stars; in exergue, SMANΘ. RIC 91. Very fine.

10



305 Commemorative Series, 330-354. Follis (bronze, 1.46 g, 14 mm), uncertain mint. VRBS ROMA Helmeted and mantled bust of Roma to left. Rev. She-wolf standing left, suckling Romulus and Remus; above, two stars; [mintmark] in exergue. Very fine.

10



306 Commemorative Series, 330-354. Follis (bronze, 2.35 g, 18 mm), Antioch. VRBS ROMA Helmeted and mantled bust of Roma to left. Rev. She-wolf standing left, suckling Romulus and Remus; above, two stars; in exergue, SMANA. RIC 91. Very fine.

10



307 Commemorative Series, 330-354. Follis (bronze, 2.71 g, 19 mm), Thessalonica. VRBS ROMA Helmeted and mantled bust of Roma to left. Rev. She-wolf standing left, suckling Romulus and Remus; above, two stars; in exergue, SMTSE. RIC 187. Nearly very fine.

10



308 Commemorative Series, 330-354. Follis (bronze, 2.22 g, 17 mm), Cyzicus (?). VRBS ROMA Helmeted and mantled bust of Roma to left. Rev. She-wolf standing left, suckling Romulus and Remus; above, two stars; in exergue, [SMKE]?. Nearly very fine.

10



309 Commemorative Series, 330-354. Follis (bronze, 0.76 g, 11 mm), Contemporary imitation. Helmeted and mantled bust of Roma to left. Rev. She-wolf standing left, suckling Romulus and Remus; above, two stars; •PLC in exergue. Fine.

7



310 Delmatius, 335-337. Follis (bronze, 1.70 g, 15 mm), Antioch. FL DELMATIVS NOB C. Laureate and cuirassed bust right. Rev: GLORIA EXERCITVS Two soldiers standing facing each other, each holding spear and resting hand on shield set on ground; between them, standard; SMANA in exergue. RIC 112. Very fine.

10



311 Divus Constantine I, died 337. Follis (bronze, 1.33 g, 13 mm), Antioch (?) D V CONSTANTINVS PT AVGG Veiled, draped and cuirassed head right. Rev. Constantine, veiled, standing right; VN-MR across field; [mintmark] in exergue. Very fine.

10



312 Constantine II, 337-340. Nummus (bronze, 1.55 g, 16 mm), Rome. VIC CONSTANTINVS AVG Laurel-and-rosette-diademed and cuirassed bust of Constantine II to right. Rev. VIRTVS AVGVSTI / R(leaf)P Constantine II standing facing, head to right, holding inverted spear in his right hand and placing his left on shield set on the ground. RIC 4. Repatinated, nearly very fine. Rare.

10



313 Constantius II, as Caesar, 324-337. Follis (bronze, 2.24 g, 18 mm), Nicomedia. FL IVL CONSTANTINVS NOB C Laureate and cuirassed bust to right. Rev. GLORIA EXERCITVS Two soldiers standing facing, looking inwards, each holding spear and resting on grounded shield, two standards between them; SMNE in exergue. Very fine.

10



314 Constantius II, 337-361. Follis (bronze, 1.65 g, 16 mm), Antioch. CONSTANTIVS P F AVG Laureate and cuirassed bust to right. Rev. GLORIA EXERCITVS Two soldiers standing facing, heads turned inwards, each holding a spear and shield, standard between them; SMANS in exergue. Very fine.

10



315 Constantius II, 337-361. Follis (bronze, 2.24 g, 16 mm), Antioch. D N CONSTANTIVS P F AVG Diademed, draped and cuirassed bust right. Rev. FEL TEMP REPARATIO Soldier left, holding shield and spearing fallen horseman to lower left; ANT (?) in exergue. Very fine.

10



316 Constantius II, 337-361. Follis (bronze, 2.69 g, 14 mm), Antioch. D N CONSTANTIVS P F AVG Diademed, draped and cuirassed bust right. Rev. FEL TEMP REPARATIO Soldier left, holding shield and spearing fallen horseman to lower left; ANT (?) in exergue. Nearly very fine.

7



317 Constans, 337-350. Follis (bronze, 2.14 g, 15 mm), Antioch. D N CONSTANS P F AVG Pearl-diademed head of Constans, right. Rev. VOT XV MVLT XX within wreath; SMANØ in exergue. Very Fine.

7



318 Constans, 337-350. Follis (bronze, 1.54 g, 16 mm), Antioch. D N CONSTANS P F AVG Pearl-diademed head of Constans, right. Rev. VOT XV MVLT XX within wreath; SMANI in exergue. Very Fine.

7



319 Julian II, as Caesar, 355-360. Ae (bronze, 2.84 g, 15 mm). D N FL IVLIANVS NOB CS Bare-headed, draped and cuirassed bust right. Rev. SPES REI PVBLICAE Emperor, helmeted, standing left, holding globe and spear; (mintmark) in exergue. Nearly very fine.

7



320 Julian II, as Caesar, 355-360. Ae (bronze, 1.95 g, 16 mm). D N FL IVLIANVS NOB CS Bare-headed, draped and cuirassed bust right. Rev. SPES REI PVBLICAE Emperor, helmeted, standing left, holding globe and spear; (mintmark) in exergue. Nearly very fine.

7



321 Julian II, 360-363. Ae (bronze, 8.56 g, 28 mm), Antioch. Pearl-diademed, draped and cuirassed bust right. Rev. Bull standing right; two stars above; (palm)SMANTΓ(palm) in exergue. RIC VIII 218. Nearly very fine.

10



322 Valentinian II, 375-392. Follis (bronze, 2.06 g, 18 mm), Antioch. D N VALENTINIANVS IVN P F AVG Pearl-diademed, draped and cuirassed bust to right. Rev. VRBS ROMA Roma seated to left on cuirass, holding Victory on globe and sceptre; Θ in left field, * above Φ in right field, ANTΔ in exergue. RIC IX 51.7. Very fine.

10



323 Valentinian II, 375-392. Maiorina (bronze, 3.88 g, 23 mm), Arelate. D N VALENTINIANVS IVN P F AVG Pearl-diademed, draped and cuirassed bust of Valentinian II to right. Rev. REPARATIO REI PVB Valentinian II standing front, head to left, holding Victory on globe in his left hand and raising kneeling female figure wearing turreted crown with his right; TCON in exergue. RIC 20c.3. Repatinated, fine.

5



324 Valentinian II, 375-392. Ae (bronze, 6.18 g, 20 mm), uncertain mint. D N VALENTINIANVS P F AVG Helmeted, diademed, draped and cuirassed bust right, holding shield and spear. Rev. GLORIA ROMANORVM Valentinian standing left in galley left, head right, raising hand; wreath to left; to right, Victory rowing; (mintmark in exergue). Very fine.

7



325 Valentinian II, 375-392. Ae (bronze, 2.82 g, 18 mm), Heraclea. D N VALENTINIANVS P F AVG Pearl-diademed, draped and cuirassed bust right. Rev. CONCOR-DIA AVGGG Roma, helmeted, head right, seated facing on throne, holding partly seen globe and spear, right leg bare. RIC 15b. Very fine. Rare.

7



326 Valentinian II, 375-392. Nummus (bronze, 1.39 mm, 13 mm), Siscia. D N VALENTINI-ANVS P F AVG Pearl-diademed, draped and cuirassed bust of Valentinian II right Rev. Victory advancing left, holding wreath and palm; BSIS in exergue. RIC 39. Very fine.

7



327 Arcadius, 383-408. Ae (bronze, 1.73 g, 16 mm), Rome. D N ARCADI-IVS P F AVG Pearl-diademed, draped and cuirassed bust of Arcadius right. Rev. VRBS RO-MA FELIX Roma standing facing, head right, trophy in right hand, Victory in left; OF-S across fields, SMROM in exergue. Cf. RIC 1277 or 1279. Very fine. Rare.

10



328 Arcadius, 383-408. Ae (bronze, 1.42 g, 13 mm), uncertain mint. Pearl-diademed, draped and cuirassed bust right, star behind. Rev. GLORI-A ROMA-NORVM Arcadius, Honorius, and Theodosius II standing, facing. Very fine.

7



329 Aelia Flacilla, 383-386. Ae (bronze, 4.52 g, 22 mm), Constantinople. AEL FLACILLA AVG Diademed and draped bust of Aelia Flacilla to right. Rev. SALVS REI PVBLICAE Victory seated right, inscribing Chi-Rho on shield set on short column; CONE in exergue. RIC 55. Nearly very fine.

10



330 Magnus Maximus, 383-388. Ae (bronze, 1.19 g, 12 mm), Aquileia. D N MAG MAXIMVS P F AVG Diademed, draped and cuirassed bust right. Rev. SPES ROMANORVM Campgate with two turrets; star above; SMAQP in exergue. RIC 55a. Nearly very fine.

10



331 Magnus Maximus, 383-388. Ae (bronze, 1.04 g, 12 mm), Aquileia. D N MAG MAXIMVS P F AVG Diademed, draped and cuirassed bust right. Rev. SPES ROMANORVM Campgate with two turrets; star above; SMAQP in exergue. RIC 55a. Repatinated, fair.

5



332 Flavius Victor, 387-388. Follis (bronze, 0.80 g, 13 mm), Aquileia (?). DN FL VICTOR P F AVG Diademed, draped and cuirassed bust right. Rev. SPES ROMANORVM Campgate, with two turrets, no door, star above, SMAQP (?) in exergue. RIC IX 55b; LRBC 1104. Fine.

10



333 Honorius, 393-423. Ae (bronze, 2.45 g, 13 mm), Antioch. D N HONORIIVS P F AVG Diademed, draped and cuirassed bust right. Rev. GLORIA ROMANORVM Honorius in military gear on horseback, pacing right, raising hand; ANTA in exergue. Very fine.

10



334 Honorius, 393-423. Ae (bronze, 1.97 g, 13 mm), Alexandria. Pearl-diademed, draped and cuirassed bust right, star behind. Rev. GLORI-A ROMA-NORVM Arcadius, Honorius, and Theodosius II standing, facing; ALEA in exergue. RIC 159. Very fine. Rare.

10



335 Aelia Eudoxia, 400-404. Follis (bronze, 2.23 g, 14 mm). AEL EVDXIA AVG Diademed and draped bust right, being crowned manus Dei above. Rev. SALVS REIPVBLICAE Victory seated right on cuirass, supporting on a low column a shield inscribed with christogram; [mintmark] in exergue. Nearly very fine.

10



336 Theodosius II, 408-450. Nummus (bronze, 1.64 g, 12 mm), Uncertain mint. D N THEODOSIVS P F AVG Diademed, draped and cuirassed bust right. Rev. Monogram within wreath. RIC X 462-465. Nearly very fine.

10



337 Johannes, usurper, 423-425. Ae (bronze, 1.28 g, 13 mm), Rome. D N IOHANNES P F AVG Pearl-diademed, draped and cuirassed bust of Johannes to right. Rev. SALVS REI PVBLICE Victory advancing left, holding trophy over her right shoulder and dragging captive; Christogram to left. Nearly very fine.

10



338 Johannes, usurper, 423-425. Ae (bronze, 1.25 g, 11 mm), Rome. D N IOHANNES P F AVG Pearl-diademed, draped and cuirassed bust of Johannes to right. Rev. SALVS REI PVBLICE Victory advancing left, holding trophy over her right shoulder and dragging captive; Christogram to left. Good fine.

10



339 Johannes, usurper, 423-425. Ae (bronze, 1.01 g, 12 mm), Rome. D N IOHANNES P F AVG Pearl-diademed, draped and cuirassed bust of Johannes to right. Rev. SALVS REI PVBLICE Victory advancing left, holding trophy over her right shoulder and dragging captive; Christogram to left. Good fine.

10



340 Valentinian III, 425-455. Nummus (bronze, 1.02 g, 12 mm). Rome. D N VALENTINIANVS P F AVG Pearl-diademed, draped and cuirassed bust right. Rev. SALVS REIPVBLICE Victory advancing left, holding wreath and palm branch; Christogram in left field, RM in exergue. RIC 2107-8. Nearly very fine.

10



341 Valentinian III, 425-455. Nummus (bronze, 1.09 g, 12 mm), Rome. D N VALENTINIANVS P F AVG Pearl-diademed, draped and cuirassed bust to right. Rev. VOT PVB Camp-gate; RM in exergue. RIC 2124. Nearly very fine.

10



342 Valentinian III, 425-455. Nummus (bronze, 1.36 g, 13 mm), Rome. D N VALENTINIANVS P F AVG Pearl-diademed, draped and cuirassed bust to right. Rev. VOT PVB Camp-gate; RM in exergue. RIC 2124. Nearly very fine.

10



343 Uncertain, migration period, 5th cent. AD. Ae (bronze, 1.47 g, 12 mm). Pearl-diademed, draped and cuirassed bust right. Rev. Victory advancing left, holding trophy over her right shoulder and dragging captive. Good fine.

7



344 Uncertain, migration period, 5th cent. AD. Ae (bronze, 1.44 g, 12 mm). Pearl-diademed, draped and cuirassed bust right. Rev. Victory advancing left, holding trophy over her right shoulder and dragging captive. Nearly very fine.

7



345 Uncertain, migration period, 5th cent. AD. Ae (bronze, 1.35 g, 12 mm). Pearl-diademed, draped and cuirassed bust right. Rev. Victory advancing left, holding trophy over her right shoulder and dragging captive. Nearly very fine.

7



346 Uncertain, migration period, 5th cent. AD. Ae (bronze, 0.86 g, 12 mm). Pearl-diademed, draped and cuirassed bust right. Rev. Victory advancing left, holding trophy over her right shoulder and dragging captive. Nearly very fine.

7



347 Uncertain, migration period, 5th cent. AD. Ae (bronze, 1.12 g, 10 mm). Pearl-diademed, draped and cuirassed bust right. Rev. Victory advancing left, holding trophy over her right shoulder and dragging captive. Nearly very fine.

7



348 Uncertain, migration period, 5th cent. AD. Ae (bronze, 1.03 g, 11 mm). Pearl-diademed, draped and cuirassed bust right. Rev. Victory advancing left, holding trophy over her right shoulder and dragging captive. Nearly very fine.

7



349 Marcian, 450-457. Nummus (bronze, 1.13 g, 11 mm), Constantinople. D N MARCIANVS P F AV Diademed, draped and cuirassed bust right. Rev. Monogram in wreath, CON in exergue. Very fine.

10



350 Marcian, 450-457. Nummus (bronze, 1.10 g, 11 mm), Constantinople. D N MARCIANVS P F AV Diademed, draped and cuirassed bust right. Rev. Monogram in wreath, CON in exergue. Nearly very fine.

10



351 Marcian, 450-457. Nummus (bronze, 1.06 g, 11 mm), Constantinople. D N MARCIANVS P F AV Diademed, draped and cuirassed bust right. Rev. Monogram in wreath, CON in exergue. Fine.

10



352 Marcian, 450-457. Nummus (bronze, 0.89 g, 9 mm). D N MARCIANVS P F AV Diademed, draped and cuirassed bust right. Rev. Monogram in wreath; mintmark in exergue. Good fine.

10



353 Marcian, 450-457. Nummus (bronze, 0.80 g, 10 mm). D N MARCIANVS P F AV Diademed, draped and cuirassed bust right. Rev. Monogram in wreath; mintmark in exergue. Nearly very fine.

10



354 Marcian, 450-457. Nummus (bronze, 1.40 g, 11 mm). D N MARCIANVS P F AV Diademed, draped and cuirassed bust right. Rev. Monogram in wreath; [mintmark in exergue]. Nearly very fine.

10



355 Marcian, 450-457. Nummus (bronze, 1.18 g, 11 mm). D N MARCIANVS P F AV Diademed, draped and cuirassed bust right. Rev. Monogram in wreath; [mintmark in exergue]. Nearly very fine.

10



356 Marcian, 450-457. Nummus (bronze, 1.57 g, 11 mm). D N MARCIANVS P F AV Diademed, draped and cuirassed bust right. Rev. Monogram in wreath; [mintmark in exergue]. Nearly very fine.

7



357 Leo I, 457-474. Nummus (bronze, 1.04 g, 10 mm). Constantinople. DN L[EO] Pearl-diademed, draped and cuirassed bust right. Rev. Verina standing facing, holding globus cruciger in her right hand and scepter with her left; b-E across fields. RIC 714. Very fine.

10



358 Leo I, 457-474. Nummus (bronze, 1.32 g, 11 mm), Constantinople. DN LEO P P [...] Pearl-diademed, draped and cuirassed bust right. Rev. Lion, crouching left, head right, within a wreath. RIC 674. Very fine.

10



359 Leo I, 457-474. Nummus (bronze, 1.38 g, 10 mm). Pearl-diademed, draped and cuirassed bust right. Rev. Monogram of Leo within wreath. RIC 681-693. Nearly very fine.

10



360 Leo I, 457-474. Nummus (bronze, 1.29 g, 10 mm). Pearl-diademed, draped and cuirassed bust right. Rev. Monogram of Leo within wreath. RIC 681-693. Nearly very fine.

10



361 Leo I, 457-474. Nummus (bronze, 1.05 g, 10 mm). Pearl-diademed, draped and cuirassed bust right. Rev. Monogram of Leo within wreath. RIC 681-693. Repatinated, fine.

5



362 Leo I, 457-474. Nummus (bronze, 1.41 g, 9 mm). Pearl-diademed, draped and cuirassed bust right. Rev. Monogram of Leo within wreath. RIC 681-693. Repatinated, fine.

5



363 Leo I, 457-474. Nummus (bronze, 1.41 g, 11 mm), Constantinople. Diademed, draped and cuirassed bust right. Rev. Leo standing facing, head right, holding long cross and grasping captive to right; star to left. Very fine.

10



364 Aelia Zenonis, Augusta, 475-476. Nummus (bronze, 1.29 g, 9 mm), struck under Basiliscus, Constantinople. [A Z]EN[ONIS] Pearl-diademed and draped bust of Aelia Zenonis to right. Rev. Monogram of Aelia Zenonis. RIC 1018. Very fine. Very rare.

100



365 Zeno, 476-491. Nummus (bronze, 0.71 g, 8 mm). Pearl-diademed, draped and cuirassed bust of Zeno to right. Rev. Monogram of Zeno within wreath. Good fine.

10



366 Zeno, 476-491. Nummus (bronze, 1.22 g, 11 mm), Constantinople. Helmeted, draped and cuirassed bust right. Rev. Victory advancing left, holding trophy over shoulder and dragging captive. RIC X 947. Repatinated, very fine. Rare.

20



367 Zeno, 476-491. Nummus (bronze, 0.82 g, 9 mm), Constantinople. Pearl-diademed, draped and cuirassed bust right. Rev. Zeno monogram within wreath. RIC X 961/963. Nearly very fine.

10



368 Barbaric imitation of Roman folles (bronze, 0.76 g, 10 mm). Pearl-diademed head right. Rev. Cross. Nearly very fine.

7



369 Barbaric imitation of Roman folles (bronze, 1.57 g, 15 mm). Pearl-diademed head right. Rev. Imitating fallen horseman type. Nearly very fine.

7



370 Barbaric imitation of Roman folles (bronze, 1.22 g, 12 mm). Pearl-diademed head right. Rev. Cross within wreath; ANT in exergue. Very fine.

7



371 Barbaric imitation of Roman folles (bronze, 0.89 g, 11 mm). Pearl-diademed head right. Rev. Cross. Nearly very fine.

7



372 Barbaric imitation of Roman folles (bronze, 0.53 g, 9 mm). Pearl-diademed head right. Rev. Cross. Nearly very fine.

7



373 Barbaric imitation of Roman folles (bronze, 0.56 g, 9 mm). Pearl-diademed head right. Rev. Monogram. Nearly very fine.

7



374 Barbaric imitation of Roman folles (bronze, 1.14 g, 12 mm). Pearl-diademed head right. Rev. Emperor standing left, receiving crown from Victory. Nearly very fine.

7



375 Barbaric imitation of Roman folles (bronze, 0.66 g, 9 mm). Pearl-diademed head right. Rev. Cross. Two standing soldiers, holding spears. Nearly very fine.

7



376 Anastasius I, 491-518. Follis (bronze, 10.22 g, 25 mm), Constantinople. D N ANASTA-SIVS P P AVG Pearl-diademed, draped and cuirassed bust of Anastasius I to right. Rev. Large M between two six-pointed stars; above, cross. Γ below, CON in exergue. SB 19. Good fine.

10



377 Anastasius I, 491-518. Follis (bronze, 10.57 g, 28 mm), Constantinople. D N ANASTA-SIVS P P AVG Pearl-diademed, draped and cuirassed bust of Anastasius I to right. Rev. Large M between two six-pointed stars; above, cross. Δ below, in exergue, CON. SB 19. Nearly very fine.

10



378 Anastasius I, 491-518. Decanummium (bronze, 2.03 g, 16 mm), Constantinople. D N ANASTASIVS P P AVG Diademed, draped and cuirassed bust to right. Rev. Large I, CONCORD around, pellet to left and right. MIBE 34; DOC 19; SB 26. A few spots of corrosion on obverse, otherwise very fine.

10



379 Anastasius I, 491-518, Half Follis (bronze, 9.72 g, 25 mm), Antioch. DN ANASTAS[.] Diademed, draped and cuirassed bust right. Rev: Large K, to left cross dividing AN/TX; to right A. SB 49. Nearly very fine.

10



380 Anastasius I, 491-518, Half Follis (bronze, 8.24 g, 24 mm), Antioch. DN ANASTASIVS P P AVG Diademed, draped and cuirassed bust right. Rev: Large K, to left cross dividing AN/TX; to right A. SB 49. Very fine.

10



381 Anastasius I, 491-518. Pentanummium (bronze, 2.16 g, 11 mm), Antioch. Diademed, draped and cuirassed bust right. Rev: Large E, containing sideways A and Z (or N); B to right. SB 53A. Repatinated, nearly very fine. Rare.

10



382 Anastasius I, 491-518. Pentanummium (bronze, 1.86 g, 12 mm), Antioch. Diademed, draped and cuirassed bust right. Rev: Large E, containing sideways A and Z (or N); Γ to right. SB 53A. Repatinated, nearly very fine. Rare.

10



383 Anastasius I, 491-518. Follis (bronze, 17.14 g, 36 mm) Nikomedia. DN ANASTA[SIVS PP AVC] Diademed, draped and cuirassed bust right. Rev. Large M between stars; cross above, star below; NIKOMI in exergue. SB 35. Fine.

10



384 Justin I, 518-527. Half Follis (bronze, 8.32 g, 26 mm), Constantinople. DN IVSTINVS PP AV Pearl diademed, draped, cuirassed bust right. Rev: Large K, long cross to left, star above and below; E to right. SB 69. Nearly very fine.

10



385 Justin I, 518-527. Decanummium (bronze, 4.28 g, 17 mm), Constantinople. D N IVSTINVS P P AVC Diademed, draped and cuirassed bust to right. Rev. Large I, A CONCORDI around. SB 70. Nearly very fine.

10



386 Justin I, 518-527. Half follis (bronze, 5.61 g, 26 mm), Theoupolis (Antioch). D N IVSTINVS PP AVG Diademed and draped bust of Justin I to right. Rev. Large K, to left cross dividing AN/TX, Γ to right. SB 104. Good fine.

10



387 Justin I, 518-527. Dekanummium (bronze, 3.90 g, 24 mm), Theoupolis (Antioch). Diademed, draped and cuirassed bust of Justin I to right. Rev. [.] CONCORDI Large I; above cross; pellets to right; ANTX in exergue. SB 108. Good fine.

10



388 Justin I, 518-527. Pentanummium (bronze, 2.11 g, 13 mm), Theoupolis (Antioch). Diademed, draped and cuirassed bust of Justin I to right. Rev. Tyche of Antioch seated facing within shrine; to left Ε. DOC 57; SB 111. Nearly very fine.

10



389 Justin I, 518-527. Pentanummium (bronze, 1.84 g, 12 mm), Theoupolis (Antioch). Diademed, draped and cuirassed bust of Justin I to right. Rev. Tyche of Antioch seated facing within shrine; to left €.

10



390 Justin I, 518-527. Pentanummium (bronze, 1.81 g, 14 mm), Theoupolis (Antioch). Diademed, draped and cuirassed bust of Justin I to right. Rev. Tyche of Antioch seated facing within shrine; to left €.

10



391 Justin I, 518-527. Pentanummium (bronze, 1.78 g, 11 mm), Theoupolis (Antioch). Diademed, draped and cuirassed bust of Justin I to right. Rev. Tyche of Antioch seated facing within shrine; to left €.

10



392 Justin I, 518-527. Pentanummium (bronze, 1.88 g, 11 mm), Theoupolis (Antioch). Diademed, draped and cuirassed bust of Justin I to right. Rev. Tyche of Antioch seated facing within shrine; to left €.

10



393 Justin I, 518-527. Follis (bronze, 16.56 g, 29 mm), Nicomedia. D N IVSTINVS P F AVG Diademed and draped bust of Justin I to right. Rev. Large M between two six-pointed stars; above, cross; below E; in exergue, NIK[?].

10



394 Justin I, 518-527. Half follis (bronze, 7.90 g, 25 mm), Nicomedia. DN IVSTINVS PP AYG Diademed, draped, cuirassed bust right. Rev. Large K, to left long cross dividing N and I, to right B.

10



395 Justin I, 518-527. Nummi (bronze, 4.96 g, 16 mm), Alexandria. Diademed, draped and cuirassed bust to right. Rev. Cross between large IB; AΛEΞ in exergue.

10



396 Justin I, 518-527. Follis (bronze, 14.09 g, 33 mm), Eastern imitation. DN IVSTINVS [...] Diademed, draped and cuirassed bust right. Rev. Large M, cross above; cross to left and right, Γ below; [mintmark] in exergue. Repatinated, fine.

10



397 Justin I, 518-527. Follis (bronze, 15.34 g, 29 mm), Eastern imitation. Diademed, draped and cuirassed bust right. Rev. Large M, cross above; star to left and right, (officina below); NIKH in exergue. Repatinated, fine.

10



398 Justin I and Justinian I, 527. Follis (bronze, 15.19 g, 31 mm), Constantinople. DN IVSTIN ET IVSTINIAN PP AVC Diademed bust cuirassed with paludamentum of Justin I to right. Rev. Large M between star and cross; cross above, A below; CON in exergue. SB 125. Good fine. Rare.

20



399 Justinian I, 527-565. Follis (bronze, 15.31 g, 31 mm), Constantinople. DN IVSTINIANVS P P AVG Diademed, draped and cuirassed bust right. Rev. Large M, cross above; star to left and right, A below; CON in exergue. SB 160. Nearly very fine.

10



400 Justinian I, 527-565. Pentanummium (bronze, 1.05 g, 11 mm), Constantinople. D N IVSTINIANVS PP AVG Diademed, draped and cuirassed bust right. Rev. Large E. Very fine.

10



401 Justinian I, 527-565. Pentanummium (bronze, 2.21 g, 17 mm), Constantinople. D N IVSTINIANVS P P AVG Diademed, draped, and cuirassed bust of Justinian I to right. Rev. Large E; to right, Δ. DOC 96d; SB 170. Nearly very fine.

7



402 Justinian I, 527-565. Decanummium (bronze, 2.27 g, 11 mm), Rome?. D N IVSTINIANVS P AV Helmeted, diademed and cuirassed bust of Justinian I facing, holding globus cruciger. Rev. Large I between A/N/N/O and XX/VIII; all within wreath. SB 326 (Ravenna). Nearly very fine.

10



403 Justinian I, 527-565. Decanummium (bronze, 4.46 g, 18 mm), Rome?. D N IVSTINIANVS P AV Helmeted, diademed and cuirassed bust of Justinian I facing, holding globus cruciger. Rev. Large I between A/N/N/O and XX/XVI; all within wreath. SB 326 (Ravenna). Nearly very fine.

10



404 Justinian I, 527-565. Follis (bronze, 12.51 g, 30 mm), Theoupolis (Antioch). DN IVSTINIANVS PP AVG Pearl diademed, draped, cuirassed bust right. Rev. Large M between two stars; cross above, E below, ΘΠΟ[.] in exergue. SB 217. Repatinated, good fine.

10



405 Justinian I, 527-565. Follis (bronze, 19.96 g, 35 mm), Theoupolis (Antioch). Helmeted and cuirassed bust facing, holding globus cruciger and shield; cross to right. Rev. Large M; Cross above, A/N/N/O and [regnal year] across field; Γ below, ΘΠΟ in exergue. SB 221. Nearly very fine.

10



406 Justinian I, 527-565. Follis (bronze, 15.96 g, 34 mm), Theoupolis (Antioch). Pearl-diademed, draped, and cuirassed bust right. Rev. Large M; cross above, star to left and right; Γ below; +THEUP+ in exergue. SB 216. Nearly very fine.

10



407 Justinian I, 527-565. Half Follis (bronze, 7.28 g, 25 mm), Theoupolis (Antioch). D N IVSTINIANVS P P AVG Diademed, draped and cuirassed bust of Justinian I to right. Rev. Large K; to left, long cross dividing mint name 'T - H / Ε - Υ / Ο / Ρ'; in field to right, Γ. SB 226. Nearly very fine.

10



408 Justinian I, 527-565. Decanummius (bronze, 3.76 g, 19 mm), Theoupolis (Antioch). D N IVSTINI-ANVS P P AVG Helmeted and cuirassed bust of Justinian I facing, holding cross on globe in right hand and shield on left arm; in right field, cross. Rev. Large I between A/N/N/O and X/X/X/ çl; cross above, THEÇP in exergue. SB 237. Nearly very fine.

10



409 Justinian I, 527-565. Decanummius (bronze, 4.54 g, 26 mm), Theoupolis (Antioch). DN IVSTINIANVS P P [...] Diademed, draped and cuirassed bust right. Rev. B CONCORDI; Large I, pellet to right; ΘΥΠΟΛ in exergue. DOC -; MIBE 139 var (pellet to left and right); SB 234a var (same). Nearly very fine. Very rare.

10



410 Justinian I, 527-565. Pentanummius (bronze, 2.25 g, 18 mm), Theoupolis (Antioch). D N IVSTINIANVS P P A Diademed, draped and cuirassed bust of Justinian I to right. Rev. Large Ç with central cross; to right, □. DOC 270; SB 243. Very fine.

7



411 Justinian I, 527-565. Pentanummius (bronze, 1.90 g, 15 mm), Theoupolis (Antioch). D N IVSTINIANVS P P A Diademed, draped and cuirassed bust of Justinian I to right. Rev. Large Ç with central cross; to right, □. DOC 270; SB 243. Very fine.

7



412 Justinian I, 527-565. Decanummius (bronze, 4.79 g, 18 mm), Nicomedia. Diademed, draped and cuirassed bust right. Rev. Large I between A/N/N/O and X/XX/I (?); cross above, ΝΙΚ in exergue. SB 205. Good fine.

10



413 Justinian I, 527-565. Decanummius (bronze, 4.12 g, 21 mm), Carthage. Diademed, draped and cuirassed bust of Justinian I to right. Rev. Large I, A/N/N/O to left, X/III to right; CAR in exergue. SB 269. Fine.

10



414 Justinian I, 527-565. Decanummium (bronze, 6.67 g, 21 mm), Carthage. Diademed, draped and cuirassed bust of Justinian I to right. Rev. Large I, A/N/N/O to left, X/III to right; CAR in exergue. SB 269. Good fine.

10



415 Justinian I, 527-565. Follis (bronze, 10.42 g, 25 mm), Eastern imitation. DN IVSTINIANVS P P AVG Diademed, draped and cuirassed bust right. Rev. Large M, cross above; star to left and right, Γ below; CON in exergue. Fine.

10



416 Justinian I, 527-565. Follis (bronze, 13.89 g, 31 mm), Eastern imitation. DN IVSTINIANVS P P AVG Diademed, draped and cuirassed bust right. Rev. Large M, cross above; star to left and right, A below; CON in exergue. Repatinated, fine.

10



417 Justin II, with Sophia. 565-578. Half follis (bronze, 7.75 g, 23 mm), Theoupolis (Antioch). Justin II, holding scepter in his right hand, and Sophia, holding scepter in her left hand, seated facing on double throne and holding globus cruciger between them; around, blundered legend. Rev. Large K between A/N/N/O and III; cross above; R below. SB 381. Repatinated, very fine.

10



418 Justin II, 565-578. Pentanummium (bronze, 1.75 g, 14 mm), Theoupolis (Antioch). Monogram of Justin II. Rev. Large E, cross to right. SB 386. Very fine.

7



419 Justin II, 565-578. Pentanummium (bronze, 1.70 g, 14 mm), Theoupolis (Antioch). Monogram of Justin II. Rev. Large E, cross to right. SB 386. Nearly very fine.

7



420 Justin II, 565-578. Nummus (bronze, 0.70 g, 9 mm), Carthage. Nimbate bust facing between two crosses. Rev. Large Δ (or A) with stars around. DOC 310 (Justinian I); MIBE 213; SB 282 (same). Good fine. Rare.

10



421 Justin II, with Sophia, 565-578 Half Follis (bronze, 5.51 g, 20 mm), Thessalonica. Nimbate figures of Justin II and Sophia seated facing on double throne, Justin holding globus cruciger in his right hand and Sophia holding cruciform scepter in hers. Rev. Large K between A/N/N/O and ΚIII; cross above, TES in exergue. SB 366. Very fine.

10



422 Justin II, with Sophia, 565-578 Half Follis (bronze, 4.92 g, 21 mm), Thessalonica. Nimbate figures of Justin II and Sophia seated facing on double throne, Justin holding globus cruciger in his right hand and Sophia holding cruciform scepter in hers. Rev. Large K between A/N/N/O and XI/II; cross above, TES in exergue. SB 366. Nearly very fine.

10



423 Justin II, with Sophia, 565-578 Half Follis (bronze, 5.56 g, 21 mm), Thessalonica. Nimbate figures of Justin II and Sophia seated facing on double throne, Justin holding globus cruciger in his right hand and Sophia holding cruciform scepter in hers. Rev. Large K between A/N/N/O and Δ; cross above, TES in exergue. SB 366. Very fine.

10



424 Justin II, with Sophia, 565-578 Half Follis (bronze, 6.16 g, 21 mm), Thessalonica. Nimbate figures of Justin II and Sophia seated facing on double throne, Justin holding globus cruciger in his right hand and Sophia holding cruciform scepter in hers. Rev. Large K between A/N/N/O and XII; cross above, TES in exergue. SB 366. Nearly very fine.

10



425 Justin II, with Sophia, 565-578. Follis (bronze, 7.33 g, 27 mm), pseudo-Byzantine; uncertain mint, probably from one of the cities of the Decapolis. Justin, holding globus cruciger, and Sophia, holding cruciform scepter, seated facing on double throne, both nimbate; cross above and between their heads. Rev. Large M, cross above; A below; A/N/N/O to right; NIKO in exergue. Nearly very fine.

10



426 Justin II, with Sophia, 565-578. Follis (bronze, 9.91 g, 27 mm), Nicomedia. Justin, holding globus cruciger, and Sophia, holding cruciform scepter, seated facing on double throne, both nimbate; cross above and between their heads. Rev. Large M, cross above; B below; A/N/N/O to left, ς to right; NIKO in exergue. SB 369. Very fine.

10



427 Tiberius II Constantine, 578-582. Follis (bronze, 11.97 g, 28 mm). Constantinople. Crowned bust facing, wearing consular robes, holding mappa and scepter topped by eagle supporting cross. Rev. Large M; cross above, A/N/N/O to left, ς /[?] to right; cross above, CONA in exergue. SB 430. Nearly very fine.

10



428 Tiberius II Constantine, 578-582. 3/4 Follis or 30 Nummi (bronze, 12.35 g, 31 mm), Nicomedia. Crowned, draped and cuirassed facing bust. Rev. Large XXX; cross above; NIKOB in exergue. DOC 32b; SB 442. Nearly very fine.

10



429 Maurice Tiberius, 582-602. Pentanummium (bronze, 1.09 g, 13 mm), Constantinople. Diademed, draped and cuirassed bust right. Rev. Large E; to right, A. SB 501B. Repatinated, nearly very fine.

10



430 Maurice Tiberius, 582-602. Pentanummium (bronze, 1.75 g, 17 mm), Constantinople. d m TIB P P A Diademed, draped and cuirassed bust to right. Rev. Large 4. SB 438. Very fine.

10



431 Maurice Tiberius. 582-602. Decanummium (bronze, 2.94 g, 17 mm), Theoupolis (Antioch). Crowned bust facing, holding mappa and eagle-tipped scepter. Rev. Large X between A/N/N/O and II/II; cross above, e below. SB 536. Very fine.

10



432 Maurice Tiberius. 582-602. Decanummium (bronze, 3.07 g, 18 mm), Theoupolis (Antioch). Helmeted and cuirassed bust facing, holding cross on globe in right hand and shield on left arm; in right field, cross. Rev. Large I between A/N/N/O and X/I; cross above, THECP in exergue. Very fine.

10



433 Maurice Tiberius. 582-602. 12 Nummi (bronze, 4.44 g, 15 mm), Alexandria. Diademed, draped and cuirassed bust right, holding cross. Rev. Cross between I-B; AΛEΞ in exergue. DOC 213; SB 544. Very fine.

10



434 Maurice Tiberius. 582-602. Nummus (bronze, 0.67 g, 9 mm), Carthage. Diademed, draped and cuirassed bust right. Rev. Palm tree, with three pellets to left and right. SB 572B; MIB 134. Very fine.

10



435 Phocas, with Leontia, 602-610. Follis (bronze, 9.84 g, 25 mm), Theoupolis (Antioch). O N FOCA NE PE AV Phocas standing facing, holding globus cruciger in his right hand and Leontia standing facing, holding cruciform scepter in her right hand; above, cross. Rev. Large m between A/N/N/O and 4/II; cross above, THECP in exergue. SB 671. Very fine.

7



436 Phocas, with Leontia, 602-610. Decanummium (bronze, 3.28 g, 19 mm), Theoupolis (Antioch). Phocas and Leontia standing facing, holding globus cruciger and cruciform scepter, respectively. Rev. Large X; A/N/N/O, to left; III to right; cross above, R below. SB 675. Very fine.

7



437 Phocas, with Leontia, 602-610. Decanummium (bronze, 2.13 g, 16 mm), Theoupolis (Antioch). Phocas and Leontia standing facing, holding globus cruciger and cruciform scepter, respectively. Rev. Large X; A/N/N/O, to left; I, to right; cross above, R below. SB 675. Repatinated, nearly very fine.

10



438 Heraclius to Constans II, 610 - 668, unusual pseudo-Byzantine Follis (bronze, 4.29 g, 21 mm, Thessalonica (?). IMPER CONST Facing bust of (probably) Constans II, holding globus cruciger. Rev. Large M; A/N/N to left, Heraclian (?) monogram to right, cross above, Γ below; ΘΕC in exergue. Nearly very fine.

7



439 Heraclius. 610-641. Follis (bronze, 11.70 g, 27 mm). Constantinople. Crowned and cuirassed bust facing, holding globus cruciger and shield. Rev. Large M between A/N/N/O and I; cross above, Ε below; CON in exergue. SB 804. Repatinated, nearly very fine.

7



440 Heraclius, with Martina and Heraclius Constantine. 610-641. Follis (bronze, 5.14 g, 25 mm), Constantinople. Heraclius, in center, flanked by Martina, on left, and Heraclius Constantine, on right, each wearing crown and chlamys and holding globus-cruciger; two crosses flanking Heraclius head. Rev. Large M between A/N/N/O and X/X/X; cross above, Γ below, CON in exergue. SB 806. Nearly very fine.

7



441 Heraclius, with Martina and Heraclius Constantine. 610-641. Follis (bronze, 4.59 g, 26 mm), Constantinople. Heraclius, in center, flanked by Martina, on left, and Heraclius Constantine, on right, each wearing crown and chlamys and holding globus-cruciger; two crosses flanking Heraclius head. Rev. Large M between A/N/N/O and X/ç; cross above, Γ below, CON in exergue. SB 806. Very fine.

7



442 Heraclius, with Martina and Heraclius Constantine, 610-641. Follis (bronze, 7.50 g, 24 mm), Constantinople. Heraclius between Martina, on left, and Heraclius Constantine, on right, each standing facing, wearing crown and chlamys, and holding globus cruciger in their right hands. Rev. Large M, ANNO above; monogram to left, X/CI to right; Δ below, CON in exergue. Nearly very fine.

7



443 Heraclius, with Martina and Heraclius Constantine, 610-641. Follis (bronze, 4.53 g, 25 mm), Constantinople. Heraclius between Martina, on left, and Heraclius Constantine, on right, each standing facing, wearing crown and chlamys, and holding globus cruciger in their right hands. Rev. Large M, ANNO above; monogram to left, X/CI to right; B below, CON in exergue. Nearly very fine.

7



444 Heraclius, with Martina and Heraclius Constantine, 610-641. Follis (bronze, 2.80 g, 21 mm), Constantinople. Heraclius between Martina, on left, and Heraclius Constantine, on right, each standing facing, wearing crown and chlamys, and holding globus cruciger in their right hands. Rev. Large M, between monogram and A/N/N/O; cross above; Δ below, CON in exergue. Nearly very fine.

7



445 Heraclius, with Heraclius Constantine, 610-641. Follis (bronze, 5.51 g, 25 mm), Constantinople. Heraclius and Heraclius Constantine standing facing, each holding globus cruciger; 2x c/m. Rev. Large M, legend around; CON in exergue. Fine.

7



446 Heraclius, with Heraclius Constantine, 610-641. Follis (bronze, 10.96 g, 31 mm), Constantinople. Heraclius and Heraclius Constantine standing facing, each holding globus cruciger;. Rev. Large M between A/N/N/O and II/II; B below, CON in exergue. Nearly very fine.

7



447 Heraclius, with Heraclius Constantine, 610-641. Follis (bronze, 9.06 g, 28 mm), Constantinople. Heraclius and Heraclius Constantine standing facing, each holding globus cruciger;. Rev. Large M between A/N/N/O and II/I; CON in exergue. Repatianted, fine.

7



448 Heraclius, with Martina and Heraclius Constantine, 610-641. Follis (bronze, 5.75 g, 23 mm), Nicomedia. Heraclius, in centre, flanked by Martina, on left, and Heraclius Constantine, on right, each wearing crown and chlamys and holding globus-cruciger. Rev. Large M; ANNO and cross above, monogram to left, regnal year to right; B below, NIKO in exergue. SB 836. Nearly very fine.

7



449 Heraclius with Heraclius Constantine, 610-641. Follis (bronze, 9.46 g, 28 mm), Nicomedia. Heraclius and Heraclius Constantine standing facing, each holding globus cruciger. Rev. Large M between A/N/N/O and ς/I; cross above, Γ below; NIKO in exergue. Nearly very fine.

7



450 Heraclius, with Martina and Heraclius Constantine, 610-641. Follis (bronze, 6.44 g, 22 mm), Thessalonica. Heraclius, Heraclius Constantine and Martina standing facing, each holding cross. Rev. Large M between A/N/N/O and X/ς/I; B below; ΘEC in exergue. SB 825. Nearly very fine.

7



451 Heraclius, with Martina and Heraclius Constantine, 610-641. Follis (bronze, 4.53 g, 24 mm), Thessalonica. Heraclius, Heraclius Constantine and Martina standing facing, each holding cross. Rev. Large M between A/N/N/O and X/ς/I/III; B below; ΘEC in exergue. SB 825. Nearly very fine.

7



452 Heraclius, with Heraclius Constantine, 610-641. Half Follis (bronze, 3.55 g, 19 mm), Thessalonica. Heraclius and Heraclius Constantine standing facing, each holding globus cruciger; cross above. Rev. Large K; cross above, A/N/N/O to left, [regnal year] to right, ΘEC in exergue. Repatinated, fine.

7



453 Heraclius, with Martina and Heraclius Constantine, 610-641. Follis (bronze, 5.41 g, 21 mm), Thessalonica. Heraclius, Heraclius Constantine and Martina standing facing, each holding cross. Rev. Large M between A/N/N/O and X/CI/II; B below; ΘEC in exergue. SB 825. Nearly very fine.

7



454 Heraclius, with Martina and Heraclius Constantine, 610-641. Follis (bronze, 5.75 g, 25 mm), Cyzicus. Heraclius between Martina, on left, and Heraclius Constantine, on right, each standing facing, wearing crown and chlamys, and holding globus cruciger in their right hands. Rev. Large M, ANNO above; monogram to left, X/CI/II to right; A below, KYZ in exergue. Large M; to left. SB 841. Nearly very fine.

7



455 Heraclius, with Martina and Heraclius Constantine, 610-641. Follis (bronze, 4.57 g, 22 mm), Cyzicus. Heraclius between Martina, on left, and Heraclius Constantine, on right, each standing facing, wearing crown and chlamys, and holding globus cruciger in their right hands. Rev. Large M, ANNO above; monogram to left, X/CI/II to right; A below, KYZ in exergue. Large M; to left. SB 841. Nearly very fine.

7



456 Heraclius, with Martina and Heraclius Constantine, 610-641. Follis (bronze, 6.62 g, 26 mm), Cyzicus. Heraclius between Martina, on left, and Heraclius Constantine, on right, each standing facing, wearing crown and chlamys, and holding globus cruciger in their right hands. Rev. Large M, ANNO above; monogram to left, X/CI/II to right; A below, KYZ in exergue. Large M; to left. SB 841. Nearly very fine.

7



457 Heraclius, with Martina and Heraclius Constantine, 610-641. Follis (bronze, 5.94 g, 22 mm), uncertain mint in Cyprus. Heraclius, Heraclius Constantine and Martina standing facing, each holding cross. Rev. Large M; monogram above, Γ below, A/N/N/O to left, X/CI/II to right, ΚΥΠΡ in exergue. SB 849. Repatinated, nearly very fine.

7



458 Heraclius, 610-641. 12 Nummi (bronze, 5.28 g, 16 mm), Persian occupation of Egypt (?), Alexandria, circa 618-628. Facing beardless bust of Heraclius with crown set on crescent and surmounted by simple cross, wearing cuirass; in field to left, star; in field to right, crescent. Rev. Large IB, with cross potent on globe between; in exergue, ΑΛΕΞ. DOC 191; SB 855. Fine.

7



459 Heraclius, with Heraclius Constantine, 610-641. Follis (bronze, 4.84 g, 25 mm), Arab Byzantine war issue. Military mint in Palestine, likely Neapolis (Nablus). Heraclius, on the left, standing facing in military attire, with moustache and long beard, wearing crown surmounted by cross, holding long cross in his right hand; on the right, Heraclius Constantine standing facing, short bearded, wearing crown surmounted by cross and chlamys, holding globus cruciger in his right hand; between their heads, cross. Rev. Large M between A/N/N/O and X/X/4; monogram above, A below; NEA in exergue, c/m to left. DOC -. MIB X24. SB -. Good fine. Rare.

10



460 Constans II with Constantine IV, 641-668. Follis (bronze, 3.35 g, 19 mm), probably Pseudo-Byzantine of uncertain mint. Constans II, with long beard, wearing crown and military dress, holding long cross, and Constantine IV, crowned and wearing chlamys, holding cross on globe. Rev. Large M (?) between A/N/A and N/E/O/Ç; XIII in exergue. Unusual and unpublished variation. Nearly very fine.

10



461 Constans II, 641-668. Follis (bronze, 4.57 g, 23 mm), Constantinople. Bust of Constans II facing, beardless, wearing crown and chlamys, holding globus cruciger in his right hand. Rev. Large M; legend around. Nearly very fine.

7



462 Constans II, 641-668. Follis (bronze, 4.47 g, 21 mm). Standing imperial figure holding long cross and globus cruciger. Rev. Large m, star above, legend around. Nearly very fine.

7



463 Constans II, 641-668. Follis (bronze, 3.86 g, 24 mm). Standing imperial figure holding long cross and globus cruciger. Rev. Large M, legend around. Nearly very fine.

7



464 Constans II, 641-668. Follis (bronze, 4.58 g, 24 mm). Standing imperial figure holding long cross and globus cruciger. Rev. Large m, legend around. Very fine.

7



465 Constans II, 641-668. Follis (bronze, 3.11 g, 20 mm), Syracuse. IHPER COHS Bust of Constans II facing, beardless, wearing crown and chlamys, holding globus cruciger in his right hand. Rev. Large M between ANA and NEOÇ; SC in exergue. DOC 9 (Heraclonas). SB 1103. Nearly very fine.

7



466 Justinian II, first reign, 685-695. Half follis (bronze, 3.78 g, 24 mm). Facing bust, holding globus cruciger. Rev. Large K between [A]/N/N/O and I; cross above, officina below. SB 1262. Good fine.

10



467 Leo III the "Isaurian", with Constantine V, 717-741. Follis (bronze, 4.84 g, 23 mm), Constantinople. Crowned facing bust of Leo III, wearing chlamys, holding globus cruciger and akakia. Rev. Large M surmounted by crowned facing bust of Constantine, wearing chlamys, holding globus cruciger and akakia; cross to right; [A/A/N - X/X across lower field; A]. SB 1514. Fine.

10



468 Anonymous, time of Basil II and Constantine VIII, 976-1028. Follis (bronze, 11.82 g, 31 mm), Constantinople. +EMMA-NOVHA bust of Christ facing, wearing nimbus cruciger with voided box in each limb, pallium and colobium, book of Gospels decorated with five pellets on cover in both hands, IC-XC across fields. Rev. +IHSQS / XRISTQS / bASILEQ / bASILE in four lines; decorative element above and below. SB 1813. Nearly very fine.

7



469 Anonymous, Michael IV the Paphlagonian, 1034-1041. Ae (bronze, 6.00 g, 26 mm), Constantinople. + EMMANOVHA IC-XC Half-length figure of Christ standing facing, wearing nimbus cruciger, pallium and colobium and raising right hand in benediction; in left hand, book of gospels. Rev. IC-XC NI-KA Jewelled cross, with pellet at each extremity. SB 1825. Fine.

7



470 Anonymous Folles, time of Constantine IX, circa 1042-1055. Follis (bronze, 7.47 g, 27 mm), Constantinople. Christ seated facing on square-backed throne. Rev. IS XS / bASILE / bASIL' in three lines; above, cross between two lines; below, crescent between two lines. DOC Class D; SB 1836. Nearly very fine.

7



471 Anonymous Folles, time of Romanus IV, circa 1068-1071. Folles (bronze, 9.14 g, 28 mm), Constantinople. Nimbate bust of Christ facing, wearing tunic and pallium; in fields, IC - XC. Rev. Nimbate bust of the Virgin Mary facing, orans, wearing pallium and maphorium; in fields MHP - ΘV. SB 1867. Nearly very fine.

7



472 Nicephorus III Botaniates, 1078-1081. Folles (bronze, 5.10 g, 25 mm). Nimbate bust of Christ, facing. Rev. Latin cross with floral ornaments. SB 1889. Nearly very fine.

7



473 Nicephorus III Botaniates, 1078-1081. Folles (bronze, 3.24 g, 23 mm). Nimbate bust of Christ, facing. Rev. Latin cross with floral ornaments. SB 1889. Nearly very fine.

7



474 Alexius I Comnenus, 1081-1118. Folles (bronze, 7.11 g, 27 mm), Thessalonica. Bust of the Virgin facing, nimbate and wearing pallium and maphorium, holding with her both hands medallion of infant Christ, nimbate; in fields, MP - ΘV. Rev. Alexius I standing facing, wearing crown, divitision and loros, holding labarum in his right hand and globus cruciger in his left. SB 1909. Fine.

7



475 Alexius I Comnenus. 1081-1118. Folles (bronze, 4.08 g, 27 mm), Thessalonica. Cross potent set on two steps; pellet at each termination of arm; IC XC/NI KA. Rev. Legend in four lines. DOC 19; SB 1911. Fine.

5



476 Time of Alexius I Comnenus, 1081-1118. Folles (bronze, 0.80 g, 17 mm). Nimbate bust facing. Rev. Pelleted cross. Fine.

7



477 Manuel I Comnenus, 1143-1180. Half Tetarteron (bronze, 0.63 g, 15 mm), uncertain mint, 1143-1152. Monogram of Manuel I Comnenus. Rev. Half-length bust of Manuel I Comnenus facing, wearing loros, holding cruciform scepter in his right hand and globus cruciger in his left. SB 1979. Fine.

7



478 Byzantine. Follis (bronze, 1.94 g, 22 mm). Nimbate bust of Christ facing. Rev. Bust of emperor facing. Fine.

5



479 John III, emperor of Trebizond, 1342-1344. Trachy (bronze, 0.99 g, 17 mm). Nimbate St. Eugenius standing facing, holding long cross in his right hand. Rev. John III, standing facing, wearing loros, holding trilobate scepter in his right hand and globus cruciger in his left. Bendall, Introduction, 61; SB 2624. Nearly very fine. Rare.

10



480 VANDALS. In the name and types of Valentinian III, 5th century AD. Ae (bronze, 0.97 g, 12 mm). Diademed, draped and cuirassed bust to right. CKA[...] Camp gate with open doorway and star above. Cf. BMC Vandals 73-80 (in the name of Valentinian III). Nearly very fine.

10



481 VANDALS. Uncertain. 5/6th century. Nummus (bronze, 0.95 g, 10 mm). Diademed head right. Rev. Cross within wreath. Nearly very fine.

10



482 VANDALS. Uncertain. 5/6th century. Nummus (bronze, 0.52 g, 8 mm). Diademed head right. Rev. Cross within wreath. Nearly very fine.

10



483 VANDALS. Pseudo-Imperial coinage, in the name of Justinian I. Nummus (bronze, 0.64 g, 9 mm), Carthage. Diademed and draped bust to right. Rev. Chi-rho. Nearly very fine.

10



484 VANDALS. Pseudo-Imperial coinage, in the name of Justinian I. Nummus (bronze, 0.87 g, 10 mm), Carthage. Diademed and draped bust to right. Rev. Chi-rho. Nearly very fine.

10



485 VANDALS. Thrasamund. 496-523. Nummus (bronze, 0.68 g, 9 mm), Carthage. Pearl-diademed, draped, and cuirassed bust right. Rev. Victory advancing left, holding wreath. MEC 1, 19-20; BMC Vandals 32-6. Fine.

10



486 VANDALS. Thrasamund. 496-523. Nummus (bronze, 0.51 g, 8 mm), Carthage. Pearl-diademed, draped, and cuirassed bust right. Rev. Victory advancing left, holding wreath. MEC 1, 19-20; BMC Vandals 32-6. Fine.

10



487 VANDALS. Hilderic, 523-530. Nummus (bronze, 0.77 g, 10 mm), Carthage. [HILD REX] Diademed, draped and cuirassed bust right. Rev. Cross potent within wreath with circular ornament above. MEC 1, 24-5; BMC Vandals 9. Fine.

10



488 VANDALS. Pseudo-Imperial coinage. Circa 6th century AD. Nummus (bronze, 1.10 g, 9 mm). In the name of Justinian I. Uncertain North African mint. Diademed, draped, and cuirassed bust right. Rev. VOT/XIII in two lines within wreath. MEC 1, -; BMC Vandals 86-93. Fine.

7



489 OSTROGOTHS. Athalaric, 526-534. Nummus (bronze, 0.97 g, 10 mm), Rome. In the name of Justinian I. IVSTINIAN Diademed, draped and cuirassed bust right. Rev. Monogram of Athalaric within wreath. BMC Vandals 47-56; MIB 80; MEC 135. Repatinated, good fine.

10



490 OSTROGOTHS. Baduila, 541-552. Nummus (bronze, 0.77 g, 8 mm), Ticinum. Pearl-diademed, draped and cuirassed bust right. Rev. DN R[EX] / B. COI 95b; MEC 1, 164-5. Fine. Rare.

10



491 CRUSADERS. Edessa. Baldwin II, second reign, 1108-1118. Follis (bronze, 3.25 g, 21 mm). Count Baldwin II, dressed in chain-armour and conical helmet, standing front, head to left, holding cross in his right hand and placing his left on the hilt of his sword. Rev. Cross fleuronée with scroll at base with wedges in angles. Metcalf, Crusades, 111; CCS 9a. Fine.

10



492 CRUSADERS. Principality of Antioch. Tancred, regent, 1101-1112. Follis (bronze, 3.55 g, 26 mm). Nimbate bust of Christ facing, holding book of Gospels; in fields IC - XC. Rev. Cross pommée, fleuronée at base; in angles, TA-NK/P-H. CCS 5. Metcalf, Crusades, 81. Nearly very fine.

10



493 CRUSADERS. Principality of Antioch. Tancred, regent, 1101-1112. Follis (bronze, 4.06 g, 21 mm). Nimbate bust of Christ facing, holding book of Gospels; in fields IC - XC. Rev. Cross pommée, fleuronée at base; in angles, TA-NK/P-H. CCS 5. Metcalf, Crusades, 81. Nearly very fine.

10



494 CRUSADERS. Principality of Antioch. Tancred, regent, 1101-1112. Follis (bronze, 3.09 g, 21 mm). Armored, bearded bust of Tancred facing, holding upraised sword; cross of four pellets above. Rev. Cross pommetée, fleuronée at base; IC XC NI KA in quarters. Metcalf, Crusades 63-70; CCS 4a. Repatinated, nearly very fine.

10



495 CRUSADERS. Principality of Antioch. Tancred, regent, 1101-1112. Follis (bronze, 1.87 g, 19 mm). Armored, bearded bust of Tancred facing, holding upraised sword; cross of four pellets above. Rev. Cross pommetée, fleuronée at base; IC XC NI KA in quarters. Metcalf, Crusades 63-70; CCS 4a. Repatinated, nearly very fine.

10



496 CRUSADERS. Principality of Antioch. Roger of Salerno, regent, 1112-1119. Follis (bronze, 4.36 g, 22 mm). Virgin Mary standing orans, nimbate, wearing jewelled mantle; in fields, MH - ΘV. Rev. +/KE BOH/ΘEITΩ Cω / ΔOYΛω P/OTΓEΠIω in four lines within outer circle. CCS 8. Nearly very fine.

10



497 CRUSADERS. Principality of Antioch. Raymond-Roupen, 1216-1219. Ae (bronze, 0.31 g, 13 mm). Head of Raymond-Roupen in chain armour with pellet eye to right, wearing helmet decorated with cross and flanked by two palm branches. Rev. Gate containing five pellets, all within octafoil. Metcalf, Crusades, 481; CCS 98. Nearly very fine. Rare.

30



498 CRUSADERS. Principality of Antioch. Bohémond IV-V, 1233-1251. Pougeoise (bronze, 1.19 g, 17 mm). Fleur-de-lis. Rev. Cross pattee. Nearly very fine.

10



499 CRUSADERS. Antioch. Ae (bronze, 0.43 g, 14 mm). A/N/T/I (or similar) around cross. Rev. Blank. Fine.

10



500 CRUSADERS. Antioch. Anonymous, 12th-13th centuries. Follis (bronze, 1.21 g, 18 mm), circa 1120-1140. OA ΠΕΤΡOC Half-length figure of St. Peter facing, nimbate and draped, holding long cross in his left hand. Rev. Cross moline with three pellets in each quarter. CCS 12; Metcalf, Crusades, -. Wäckerlin, 114. Nearly very fine. Very rare.

10



501 CRUSADERS. Anonymous Follis (bronze, 2.32 g, 23 mm). Facing bust of Christ Pantokrator. Rev. Latin cross with central X and globe and two pellets at the end of each extremity; crescents to upper left and right, floral scroll below. Good fine.

10



502 CRUSADERS. County of Tripoli. Bohémond V, 1233-1251. Pougeoise (bronze, 0.90 g, 16 mm). +CIVITAS Cross pommetée with central pellet-in-annulet; pellet in quarters. Rev. +TRIPOLIS Crenellated gateway. Metcalf, Crusades 557; CCS 21. Nearly very fine.

7



503 CRUSADERS. County of Tripoli. Bohémond V, 1233-1251. Pougeoise (bronze, 0.78 g, 16 mm). +CIVITAS Cross pommetée with central pellet-in-annulet; pellet in quarters. Rev. +TRIPOLIS Crenellated gateway. Metcalf, Crusades 557; CCS 21. Fine.

7



504 CRUSADERS. Latin Kingdom of Jerusalem. Guy of Lusignan, 1186-1192. Fractional Denier (bronze, 1.28 g, 17 mm). Crowned facing bust of Guy of Lusignan. Rev. Church of the Holy Sepulchre with round dome. CCS 32a; Metcalf, Crusades, 628. Fine. Rare.

10



505 CRUSADERS. Latin Kingdom of Jerusalem. John of Brienne, 1210-1225. Denier (billon, 0.53 g, 14 mm). Acre. Crowned facing head. Rev. Cross pattée; annulets in two quarters. Metcalf, Crusades 199-200; CCS 43. Good fine.

10



506 CRUSADERS. Lusignan Kingdom of Cyprus (?). Denier (billon, 1.01 g, 16 mm). Cross pattée. Rev. Tower. Nearly very fine.

10



507 CRUSADERS. Lusignan Kingdom of Cyprus. Circa 13/14th century AD. Denier (bronze, 1.70 g, 18 mm). Cross with pellets in angles. Rev. Lion of Cyprus rampant to left. Nearly very fine.

10



508 SIDON, Barony (?). Anonymous, Mid to late thirteenth century. Ae (bronze, 0.86 g, 11 mm). Anchor. Rev. Star. Nearly very fine.

7



509 SIDON, Barony (?). Anonymous, Mid to late thirteenth century. Ae (bronze, 0.77 g, 13 mm). Anchor. Rev. Star. Nearly very fine.

7



510 ARMENIA. Cilician Armenia. Hetoum I, 1226-1270. Kardez (bronze, 4.07 g, 22 mm). Hetoum seated facing on bench, holding lis-tipped scepter and globus cruciger; star to left Rev. Cross pattée; crescent in second quarter, petal in other quarters. 22, nearly very fine.

7



511 FRANCE. Provence. Valence. Anonymous Bishops, 12th century. Denier (billon, 1.25 g, 17 mm). +S APOLLINARIS Cross with annulet. Rev- +VRBS VALENTIAI Angel with spread wings, resembling an eagle. Nearly very fine.

7



512 FRANCE. Philip IV le Bel, 1285-1314. Gros tournois (silver, 3.76 g, 23 mm). Good fine.

10



513 ITALY. Venice. Grosso (silver, 1.41 g, 20 mm). St. Mark, on the right, standing facing, holding book of Gospels in his left hand and presenting banner to the doge, on the left, standing to right and holding the 'ducal promise' in his left hand. Rev. Christ, nimbate, seated facing on decorated throne and holding book of Gospels with both hands; to upper left and right, IC - XC; to left and right, five-pointed star. Nearly very fine.

10



514 ITALY. Venice. Francesco Foscari, 1423-1457. Grossone (silver, 2.98 g, 25 mm). •FRANCISCVS• FOSCARI DVX• The doge standing to left, holding banner. Rev. +•SANCTVS• MARCVS• VENETI• Half-length bust of St. Mark, nimbate, raising his right hand in benediction and holding book of Gospels in his left. Fine.

10



515 Medieval. Ae (bronze, 1.51 g, 20 mm). Fine.

7



516 Uncertain. Ae (bronze, 1.11 g, 13 mm). Helmeted (?) bust right, legend around. Rev. Cross in center, legend around. Good fine.

7



517 Persian Occupation of Syria, 610-630. Fals (bronze, 9.53 g, 27 mm). Imitating a Byzantine nummus of Heraclius and Heraclius Constantine. Two emperors standing facing. Rev. Large M with cross above; B below, A/N/N to left, [?]/III to right, ONIKC in exergue. Repatinated, fine.

10



518 Persian Occupation of Syria, 610-630. Phocas, with Leontia type. Follis (bronze, 6.68 g, 24 mm), uncertain mint in Syria. Phocas standing facing, holding globus cruciger in his right h and and Leontia standing facing, holding cruciform scepter in her right hand; above. Rev. Large M between II/X and A/N/N/O; Γ below, CHE[.] (retrograde) in exergue. Repatinated, nearly very fine.

10



519 Persian Occupation of Syria, 610-630. Phocas, with Leontia type. Follis (bronze, 10.66 g, 29 mm), uncertain mint in Syria. Phocas standing facing, holding globus cruciger in his right h and and Leontia standing facing, holding cruciform scepter in her right hand; above. Rev. Large m between A/N/N/O and III, cross and flower (?) above, CNCY (or similar) in exergue. Cf Album, Auction 35, Lot 880. Good fine. Rare.

10



520 Arab Byzantine. Umayyad Caliphate, circa AH 24/5-27/8 / AD 645-647. Fals (bronze, 2.84 g, 23 mm), uncertain mint. Crowned and draped bust facing, bearded, holding globus cruciger in his right hand. Rev. Large M between A / N / A and II / I; above, cross; below; Γ; in exergue, NEO. Goodwin&Gyselen, p. 48, Class H. H; Pottier, I. Schulze and W. Schulze: 'Pseudo-Byzantine Coinage in Syria under Arab Rule', in: RBN 154 (2008), p. 89. class III.1a. Nearly very fine. Rare.

10



521 Arab Byzantine. Umayyad Caliphate, circa 640-650. Follis (bronze, 5.33 g, 22 mm), imitating follis of Heraclius, Uncertain mint in Syria. Three imperial figures standing facing, each holding globus cruciger. Rev. Large M; legend around. Fine.

5



522 Arab Byzantine. Umayyad Caliphate, circa 640-650. Follis (bronze, 3.66 g, 25 mm), Imitating Cyprus follis of Heraclius, Uncertain mint in Syria. Three imperial figures standing facing, each holding globus cruciger. Rev. Large M; cross above, Γ below, A/N/N/O to left, X/4/II to right; KYTP in exergue. Nearly very fine.

7



523 Arab Byzantine. Umayyad Caliphate, circa AD 685-693. Fals (bronze, 4.18 g, 18 mm), Dimashq (Damascus). Crowned Byzantine-style emperor seated facing on throne, holding cruciform sceptre and globus cruciger; bird standing right on T to left, ΛEO to right. Rev. Large M; Kufic legends to left, right, and in exergue; cross above, barred and inverted crescent below. Goodwin 20. Repatinated, good fine.

7



524 Arab Byzantine. Umayyad Caliphate, circa 641-660 AD. Fals (bronze, 4.96 g, 23 mm). Pseudo-Byzantine type, imitating the types of Constans II. Standing imperial figure, holding globus cruciger and long cross. Rev. Large m, cross above, legend around. Nearly very fine.

7



525 Arab Byzantine. Umayyad Caliphate, circa 641-660 AD. Fals (bronze, 5.07 g, 26 mm). Pseudo-Byzantine type, imitating the types of Constans II. Standing imperial figure, holding globus cruciger and long cross. Rev. Large M, cross above, legend around. Nearly very fine.

7



526 Arab Byzantine. Umayyad Caliphate, circa 641-660 AD. Fals (bronze, 3.83 g, 23 mm). Pseudo-Byzantine type, imitating the types of Constans II. Standing imperial figure, holding globus cruciger and long cross. Rev. Large M, cross above, legend around; c/m. Nearly very fine.

7



527 Arab Byzantine. Umayyad Caliphate, circa 641-660 AD. Fals (bronze, 1.80 g, 24 mm). Pseudo-Byzantine type, imitating the types of Constans II. Standing imperial figure, holding globus cruciger and long cross. Rev. Large M, cross above, legend around. Nearly very fine.

7



528 Arab Byzantine. Umayyad Caliphate, circa 641-660 AD. Fals (bronze, 1.93 g, 24 mm). Pseudo-Byzantine type, imitating the types of Constans II. Standing imperial figure, holding globus cruciger and long cross. Rev. Large M, cross above, legend around. Nearly very fine.

7



529 Arab Byzantine. Umayyad Caliphate, circa 641-660 AD. Fals (bronze, 3.50 g, 23 mm). Pseudo-Byzantine type, imitating the types of Constans II. Standing imperial figure, holding globus cruciger and long cross. Rev. Large M, cross above, legend around. Nearly very fine.

7



530 Arab Byzantine. Umayyad Caliphate, circa 641-660 AD. Fals (bronze, 3.84 g, 24 mm). Pseudo-Byzantine type, imitating the types of Constans II. Standing imperial figure, holding globus cruciger and long cross. Rev. Large M, cross above, legend around;. Nearly very fine.

7



531 Arab Byzantine. Umayyad Caliphate, circa 641-660 AD. Fals (bronze, 4.20 g, 25 mm). Pseudo-Byzantine type, imitating the types of Constans II. Standing imperial figure, holding globus cruciger and long cross. Rev. Large m, cross above, legend around;. Nearly very fine.

7



532 Arab Byzantine. Umayyad Caliphate, circa 641-660 AD. Fals (bronze, 3.75 g, 24 mm). Pseudo-Byzantine type. Facing bust, holding globus cruciger; legend around. Rev. Large M, cross above, A/II/H to left, monogram to right; mintmark in exergue. Nearly very fine.

7



533 Arab Byzantine. Umayyad Caliphate, circa 641-660 AD. Fals (bronze, 5.40 g, 26 mm). Pseudo-Byzantine type, imitating the types of Constans II. Standing imperial figure, holding globus cruciger and long cross. Rev. Large m, cross above, legend around; c/m. Nearly very fine.

7



534 Arab Byzantine. Umayyad Caliphate, circa 641-660 AD. Fals (bronze, 5.52 g, 25 mm). Pseudo-Byzantine type, imitating the types of Constans II. Standing imperial figure, holding globus cruciger and long cross. Rev. Large m, cross above, legend around; c/m. Nearly very fine.

7



535 Arab Byzantine. Umayyad Caliphate, circa 641-660 AD. Fals (bronze, 3.90 g, 25 mm). Pseudo-Byzantine type, imitating the types of Constans II. Standing imperial figure, holding globus cruciger and long cross. Rev. Large m, cross above, legend around. Nearly very fine.

7



536 Arab-Byzantine. Umayyad Caliphate. temp. Mu'awiya I ibn Abi Sufyan. AH 41-60 / AD 661-680. Fals (bronze, 3.80 g, 21 mm), Three Standing Figures type, Tabariyya (Tiberias). Three standing imperial figures. Rev. Large M; monogram above, C below; THBEPI AΔOC around left, tabariyya in Arabic to right. Goodwin 28. Nearly very fine.

7



537 Arab Byzantine. Umayyad Caliphate. temp. Mu'awiya I ibn Abi Sufyan, AH 41-60 / 661-680 AD. Fals (bronze, 4.30 g, 19 mm), Hims. Imperial bust facing, wearing diadem surmounted by cross, paludamentum and cuirass, holding globus cruciger in his right hand; in left field, K/A/A/O/N; in right field, Hims Rev. Large M between E/M/I - C/H/C; above, eight-pointed star between two waves; in exergue tayyib'. Goodwin 14. Nearly very fine.

7



538 Arab Byzantine. Umayyad Caliphate. temp. Mu'awiya I ibn Abi Sufyan, AH 41-60 / 661-680 AD. Fals (bronze, 3.62 g, 22 mm), Hims. Imperial bust facing, wearing diadem surmounted by cross, paludamentum and cuirass, holding globus cruciger in his right hand; in left field, K/A/A/O/N; in right field, Hims Rev. Large M between E/M/I - C/H/C; above, eight-pointed star between two waves; in exergue tayyib'. Goodwin 14. Nearly very fine.

7



539 Heraclius, with Martina and Heraclius Constantine, 610-641. Follis (bronze, 5.13 g, 31 mm), Cyprus mint. Martina, Heraclius, and Heraclius Constantine standing facing, each holding globus cruciger. Rev. Large M; monogram above, Γ below, A/N/N/O to left, X/4/II to right, KYPP in exergue. Nearly very fine.

7



540 Arab-Byzantine. Umayyad Caliphate. temp. Mu'awiya I ibn Abi Sufyan. AH 41-60 / 661-680 AD. Fals (bronze, 2.51 g, 18 mm), Three Standing Figures type. Three standing imperial figures. Rev. Large M; legend around. Nearly very fine.

7



541 Arab Byzantine. Umayyad Caliphate, circa AH 24/5-26/7 / 645-647 AD. Fals (bronze, 3.42 g, 20 mm), imitating a follis of Constans II, uncertain mint. Draped and bearded imperial bust facing, wearing crown with cross, holding cross in his right hand; in upper field to right, star; to right, retrograde S. Rev. Large M between N and X/N. Nearly very fine.

7



542 Arab Byzantine. Umayyad Caliphate. Fals (bronze, 2.30 g, 17 mm). Standing imperial figure, facing. Rev. Large m, legend around. Nearly very fine.

7



543 Arab Byzantine. Umayyad Caliphate. Fals (bronze, 3.75 g, 25 mm). Standing imperial figure, facing. Rev. Large m, legend around. Nearly very fine

7



544 Umayyad Caliphate. al-Malik ibn Marwan, AH 65-86 / 685-705 AD. Fals (bronze, 3.36 g, 21 mm), 'Standing Caliph' type. Caliph standing facing, bearded, placing his right hand on the pommel of his sword and whip hanging from his right elbow; legend around. Rev. Transformed cross on four steps; Kuffic legend around. Nearly very fine.

7



545 Umayyad Caliphate. al-Malik ibn Marwan, AH 65-86 / 685-705 AD. Fals (bronze, 2.50 g, 17 mm), 'Standing Caliph' type. Caliph standing facing, bearded, placing his right hand on the pommel of his sword and whip hanging from his right elbow; legend around. Rev. Transformed cross on four steps; Kuffic legend around. Nearly very fine.

7



546 Umayyad Caliphate. al-Malik ibn Marwan, AH 65-86 / 685-705 AD. Fals (bronze, 3.33 g, 18 mm), 'Standing Caliph' type. Caliph standing facing, bearded, placing his right hand on the pommel of his sword and whip hanging from his right elbow; legend around. Rev. Transformed cross on four steps; Kuffic legend around. Nearly very fine.

7



547 Umayyad Caliphate. al-Malik ibn Marwan, AH 65-86 / 685-705 AD. Fals (bronze, 3.17 g, 20 mm), 'Standing Caliph' type. Caliph standing facing, bearded, placing his right hand on the pommel of his sword and whip hanging from his right elbow; legend around. Rev. Transformed cross on four steps; Kuffic legend around. Nearly very fine.

7



548 Umayyad Caliphate. al-Malik ibn Marwan, AH 65-86 / 685-705 AD. Fals (bronze, 1.89 g, 22 mm), 'Standing Caliph' type. Caliph standing facing, bearded, placing his right hand on the pommel of his sword and whip hanging from his right elbow; legend around. Rev. Transformed cross on four steps; Kuffic legend around. Nearly very fine.

7



549 Umayyad Caliphate. al-Malik ibn Marwan, AH 65-86 / 685-705 AD. Fals (bronze, 2.10 g, 19 mm), 'Standing Caliph' type. Caliph standing facing, bearded, placing his right hand on the pommel of his sword and whip hanging from his right elbow; legend around. Rev. Transformed cross on four steps; Kuffic legend around. Nearly very fine.

7



550 Umayyad Caliphate. al-Malik ibn Marwan, AH 65-86 / 685-705 AD. Fals (bronze, 3.61 g, 14 mm), 'Standing Caliph' type. Caliph standing facing, bearded, placing his right hand on the pommel of his sword and whip hanging from his right elbow; legend around. Rev. Transformed cross on four steps; Kuffic legend around. Nearly very fine.

7



551 Umayyad Caliphate. al-Malik ibn Marwan, AH 65-86 / 685-705 AD. Fals (bronze, 3.23 g, 19 mm), 'Standing Caliph' type. Caliph standing facing, bearded, placing his right hand on the pommel of his sword and whip hanging from his right elbow; legend around. Rev. Transformed cross on four steps; Kuffic legend around. Nearly very fine.

7



552 Umayyad Caliphate. al-Malik ibn Marwan, AH 65-86 / 685-705 AD. Fals (bronze, 3.54 g, 20 mm), 'Standing Caliph' type. Caliph standing facing, bearded, placing his right hand on the pommel of his sword and whip hanging from his right elbow; legend around. Rev. Transformed cross on four steps; Kuffic legend around. Nearly very fine.

7



553 Umayyad Caliphate. al-Malik ibn Marwan, AH 65-86 / 685-705 AD. Fals (bronze, 2.97 g, 19 mm), 'Standing Caliph' type. Caliph standing facing, bearded, placing his right hand on the pommel of his sword and whip hanging from his right elbow; legend around. Rev. Transformed cross on four steps; Kuffic legend around. Nearly very fine.

7



554 Umayyad Caliphate. al-Malik ibn Marwan, AH 65-86 / 685-705 AD. Fals (bronze, 1.82 g, 19 mm), 'Standing Caliph' type. Caliph standing facing, bearded, placing his right hand on the pommel of his sword and whip hanging from his right elbow; legend around. Rev. Transformed cross on four steps; Kuffic legend around. Nearly very fine.

7



555 Umayyad Caliphate. al-Malik ibn Marwan, AH 65-86 / 685-705 AD. Fals (bronze, 1.76 g, 21 mm), 'Standing Caliph' type. Caliph standing facing, bearded, placing his right hand on the pommel of his sword and whip hanging from his right elbow; legend around. Rev. Transformed cross on four steps; Kuffic legend around. Nearly very fine.

7



556 Umayyad Caliphate. al-Malik ibn Marwan, AH 65-86 / 685-705 AD. Fals (bronze, 3.35 g, 18 mm), 'Standing Caliph' type. Caliph standing facing, bearded, placing his right hand on the pommel of his sword and whip hanging from his right elbow; legend around. Rev. Transformed cross on four steps; Kuffic legend around. Nearly very fine.

7



557 Umayyad Caliphate. al-Malik ibn Marwan, AH 65-86 / 685-705 AD. Fals (bronze, 1.08 g, 20 mm), 'Standing Caliph' type. Caliph standing facing, bearded, placing his right hand on the pommel of his sword and whip hanging from his right elbow; legend around. Rev. Transformed cross on four steps; Kuffic legend around. Nearly very fine.

7



558 Umayyad Caliphate. al-Malik ibn Marwan, AH 65-86 / 685-705 AD. Fals (bronze, 2.80 g, 19 mm), 'Standing Caliph' type. Caliph standing facing, bearded, placing his right hand on the pommel of his sword and whip hanging from his right elbow; legend around. Rev. Transformed cross on four steps; Kuffic legend around. Nearly very fine.

7



559 Umayyad Caliphate. al-Malik ibn Marwan, AH 65-86 / 685-705 AD. Fals (bronze, 2.87 g, 20 mm), 'Standing Caliph' type. Caliph standing facing, bearded, placing his right hand on the pommel of his sword and whip hanging from his right elbow; legend around. Rev. Transformed cross on four steps; Kuffic legend around. Nearly very fine.

7



560 Umayyad Caliphate. al-Malik ibn Marwan, AH 65-86 / 685-705 AD. Fals (bronze, 2.80 g, 21 mm), 'Standing Caliph' type. Caliph standing facing, bearded, placing his right hand on the pommel of his sword and whip hanging from his right elbow; legend around. Rev. Transformed cross on four steps; Kuffic legend around. Nearly very fine.

7



561 Umayyad Caliphate. al-Malik ibn Marwan, AH 65-86 / 685-705 AD. Fals (bronze, 2.71 g, 21 mm), 'Standing Caliph' type. Caliph standing facing, bearded, placing his right hand on the pommel of his sword and whip hanging from his right elbow; legend around. Rev. Transformed cross on four steps; Kuffic legend around. Nearly very fine.

7



562 Umayyad Caliphate. al-Malik ibn Marwan, AH 65-86 / 685-705 AD. Fals (bronze, 1.82 g, 21 mm), 'Standing Caliph' type. Caliph standing facing, bearded, placing his right hand on the pommel of his sword and whip hanging from his right elbow; legend around. Rev. Transformed cross on four steps; Kuffic legend around. Nearly very fine.

7



563 Umayyad Caliphate. al-Malik ibn Marwan, AH 65-86 / 685-705 AD. Fals (bronze, 4.09 g, 24 mm), 'Standing Caliph' type. Caliph standing facing, bearded, placing his right hand on the pommel of his sword and whip hanging from his right elbow; legend around. Rev. Transformed cross on four steps; Kuffic legend around. Nearly very fine.

7



564 Umayyad Caliphate. al-Malik ibn Marwan, AH 65-86 / 685-705 AD. Fals (bronze, 3.21 g, 19 mm), 'Standing Caliph' type. Caliph standing facing, bearded, placing his right hand on the pommel of his sword and whip hanging from his right elbow; legend around. Rev. Transformed cross on four steps; Kuffic legend around. Nearly very fine.

7



565 Umayyad Caliphate. al-Malik ibn Marwan, AH 65-86 / 685-705 AD. Fals (bronze, 1.93 g, 19 mm), 'Standing Caliph' type. Caliph standing facing, bearded, placing his right hand on the pommel of his sword and whip hanging from his right elbow; legend around. Rev. Transformed cross on four steps; Kuffic legend around. Nearly very fine.

7



566 Umayyad Caliphate. al-Malik ibn Marwan, AH 65-86 / 685-705 AD. Fals (bronze, 1.81 g, 20 mm), 'Standing Caliph' type. Caliph standing facing, bearded, placing his right hand on the pommel of his sword and whip hanging from his right elbow; legend around. Rev. Transformed cross on four steps; Kuffic legend around. Nearly very fine.

7



567 Umayyad Caliphate. al-Malik ibn Marwan, AH 65-86 / 685-705 AD. Fals (bronze, 2.78 g, 18 mm), 'Standing Caliph' type. Caliph standing facing, bearded, placing his right hand on the pommel of his sword and whip hanging from his right elbow; legend around. Rev. Transformed cross on four steps; Kuffic legend around. Nearly very fine.

7



568 Umayyad Caliphate. al-Malik ibn Marwan, AH 65-86 / 685-705 AD. Fals (bronze, 3.07 g, 20 mm), 'Standing Caliph' type. Caliph standing facing, bearded, placing his right hand on the pommel of his sword and whip hanging from his right elbow; legend around. Rev. Transformed cross on four steps; Kuffic legend around. Nearly very fine.

7



569 Umayyad Caliphate. al-Malik ibn Marwan, AH 65-86 / 685-705 AD. Fals (bronze, 1.80 g, 19 mm), 'Standing Caliph' type. Caliph standing facing, bearded, placing his right hand on the pommel of his sword and whip hanging from his right elbow; legend around. Rev. Transformed cross on four steps; Kuffic legend around. Nearly very fine.

7



570 Umayyad Caliphate. al-Malik ibn Marwan, AH 65-86 / 685-705 AD. Fals (bronze, 3.37 g, 21 mm), 'Standing Caliph' type. Caliph standing facing, bearded, placing his right hand on the pommel of his sword and whip hanging from his right elbow; legend around. Rev. Transformed cross on four steps; Kuffic legend around. Repatinated, nearly very fine.

7



571 Umayyad Caliphate. al-Malik ibn Marwan, AH 65-86 / 685-705 AD. Fals (bronze, 0.80 g, 16 mm), 'Standing Caliph' type. Caliph standing facing, bearded, placing his right hand on the pommel of his sword and whip hanging from his right elbow; legend around. Rev. Transformed cross on four steps; Kuffic legend around. Nearly very fine.

7



572 Umayyad Caliphate. al-Malik ibn Marwan, AH 65-86 / 685-705 AD. Fals (bronze, 1.64 g, 19 mm), 'Standing Caliph' type. Caliph standing facing, bearded, placing his right hand on the pommel of his sword and whip hanging from his right elbow; legend around. Rev. Transformed cross on four steps; Kuffic legend around. Nearly very fine.

7



573 Umayyad Caliphate. al-Malik ibn Marwan, AH 65-86 / 685-705 AD. Fals (bronze, 3.07 g, 22 mm), 'Standing Caliph' type. Caliph standing facing, bearded, placing his right hand on the pommel of his sword and whip hanging from his right elbow; legend around. Rev. Transformed cross on four steps; Kuffic legend around. Fine.

7



574 Umayyad Caliphate. al-Malik ibn Marwan, AH 65-86 / 685-705 AD. Fals (bronze, 1.64 g, 19 mm), 'Standing Caliph' type. Caliph standing facing, bearded, placing his right hand on the pommel of his sword and whip hanging from his right elbow; legend around. Rev. Transformed cross on four steps; Kuffic legend around. Fine.

7



575 Umayyad Caliphate. al-Malik ibn Marwan, AH 65-86 / 685-705 AD. Fals (bronze, 1.57 g, 18 mm), 'Standing Caliph' type. Caliph standing facing, bearded, placing his right hand on the pommel of his sword and whip hanging from his right elbow; legend around. Rev. Transformed cross on four steps; Kuffic legend around. Fine.

7



576 Umayyad Caliphate, circa 695-750. Fals (bronze, 3.56 g, 14 mm), Jerusalem. Menorah, Arabic legend around. Rev. legend in three lines. Cf. Album 163. Nearly very fine.

7



577 Umayyad Caliphate, circa 695-750. Fals (bronze, 2.79 g, 14 mm), Jerusalem. Menorah, Arabic legend around. Rev. legend in three lines. Cf. Album 163. Nearly very fine.

7



578 Umayyad Caliphate, circa 695-750. Fals (bronze, 2.62 g, 15 mm), Jerusalem. Menorah, Arabic legend around. Rev. legend in three lines. Cf. Album 163. Nearly very fine.

7



579 Umayyad Caliphate, circa 695-750. Fals (bronze, 3.56 g, 14 mm), Jerusalem. Menorah, Arabic legend around. Rev. legend in three lines. Cf. Album 163. Nearly very fine.

7



580 Umayyad Caliphate, circa 695-750. Fals (bronze, 3.22 g, 14 mm), Jerusalem. Menorah, Arabic legend around. Rev. legend in three lines. Cf. Album 163. Nearly very fine.

7



581 Umayyad Caliphate, circa 695-750. Fals (bronze, 2.69 g, 15 mm), Jerusalem. Menorah, Arabic legend around. Rev. legend in three lines. Cf. Album 163. Nearly very fine.

7



582 Umayyad Caliphate, circa 695-750. Fals (bronze, 3.02 g, 14 mm), Jerusalem. Menorah, Arabic legend around. Rev. legend in three lines. Cf. Album 163. Nearly very fine.

7



583 Umayyad Caliphate, circa 695-750. Fals (bronze, 3.26 g, 15 mm), Jerusalem. Menorah, Arabic legend around. Rev. legend in three lines. Cf. Album 163. Nearly very fine.

7



584 Anatolia & al-Jazira (Post-Seljuk). Zangids (Syria). al-Malik al-Salih Isma'il. AH 569-577 / AD 1173-1181. Ae brockage dirham (bronze, 3.81 g, 22 mm), al-Halab (Aleppo). Diademed, draped and cuirassed Roman-style bust right. Rev. Incuse of reverse. S&S Type 76. Nearly very fine.

7



585 Anatolia & al-Jazira (Post-Seljuk). Zangids (Syria). al-Malik al-Salih Isma'il. AH 569-577 / AD 1173-1181. Ae dirham (bronze, 3.56 g, 22 mm), al-Halab (Aleppo). Diademed, draped and cuirassed Roman-style bust right. Rev. Five line Arabic legend. S&S Type 76. Nearly very fine.

7



586 Anatolia & al-Jazira (Post-Seljuk). Zangids (Syria). al-Malik al-Salih Isma'il. AH 569-577 / AD 1173-1181. Ae dirham (bronze, 2.89 g, 21 mm), al-Halab (Aleppo). Diademed, draped and cuirassed Roman-style bust right. Rev. Five line Arabic legend. S&S Type 76. Nearly very fine.

7



587 Anatolia & al-Jazira (Post-Seljuk). Zangids (Syria). al-Malik al-Salih Isma'il. AH 569-577 / AD 1173-1181. Ae dirham (bronze, 3.68 g, 21 mm), al-Halab (Aleppo). Diademed, draped and cuirassed Roman-style bust right. Rev. Five line Arabic legend. S&S Type 76. Nearly very fine.

7



588 Anatolia & al-Jazira (Post-Seljuk). Zangids (Syria). al-Malik al-Salih Isma'il. AH 569-577 / AD 1173-1181. Ae dirham (bronze, 2.58 g, 20 mm), al-Halab (Aleppo). Diademed, draped and cuirassed Roman-style bust right. Rev. Five line Arabic legend. S&S Type 76. Nearly very fine.

7



589 Anatolia & al-Jazira (Post-Seljuk). Zangids (Syria). al-Malik al-Salih Isma'il. AH 569-577 / AD 1173-1181. Ae dirham (bronze, 4.24 g, 22 mm), al-Halab (Aleppo). Diademed, draped and cuirassed Roman-style bust right. Rev. Five line Arabic legend. S&S Type 76. Nearly very fine.

7



590 Anatolia & al-Jazira (Post-Seljuk). Zangids (Syria). Fals (bronze, 4.00 g, 25 mm), Halab. Two Imperial figures standing facing, holding between them patriarchal cross set up on three steps; to left of the cross, 'al-Adil' in Kufic; right of the cross, 'Nur al-Din' in Kufic; around, blundered imitation of Greek legend. Rev. Christ standing facing, nimbate, holding book of Gospels in his left hand; on the left, 'Malik al-umara'in Kufic; on the right, 'Mahmud' in Kufic; around, blundered imitation of a Greek legend. Nearly very fine.

7



591 Anatolia & al-Jazira (Post-Seljuk). Zangids (Syria). Fals (bronze, 3.81 g, 23 mm), Halab. Two Imperial figures standing facing, holding between them patriarchal cross set up on three steps; to left of the cross, 'al-Adil' in Kufic; right of the cross, 'Nur al-Din' in Kufic; around, blundered imitation of Greek legend. Rev. Christ standing facing, nimbate, holding book of Gospels in his left hand; on the left, 'Malik al-umara'in Kufic; on the right, 'Mahmud' in Kufic; around, blundered imitation of a Greek legend. Nearly very fine.

7



592 Anatolia & al-Jazira (Post-Seljuk). Zangids (Syria). Fals (bronze, 3.51 g, 22 mm), Halab. Two Imperial figures standing facing, holding between them patriarchal cross set up on three steps; to left of the cross, 'al-Adil' in Kufic; right of the cross, 'Nur al-Din' in Kufic; around, blundered imitation of Greek legend. Rev. Christ standing facing, nimbate, holding book of Gospels in his left hand; on the left, 'Malik al-umara'in Kufic; on the right, 'Mahmud' in Kufic; around, blundered imitation of a Greek legend. Nearly very fine.

7



593 Anatolia & al-Jazira (Post-Seljuk). Zangids (Syria). Fals (bronze, 5.82 g, 26 mm), Halab. Two Imperial figures standing facing, holding between them patriarchal cross set up on three steps; to left of the cross, 'al-Adil' in Kufic; right of the cross, 'Nur al-Din' in Kufic; around, blundered imitation of Greek legend. Rev. Christ standing facing, nimbate, holding book of Gospels in his left hand; on the left, 'Malik al-umara'in Kufic; on the right, 'Mahmud' in Kufic; around, blundered imitation of a Greek legend. Nearly very fine.

7



594 Anatolia & al-Jazira (Post-Seljuk). Danishmendids (?). Uncertain ruler. Circa 12th century AD. Fals (bronze, 5.55 g, 23 mm). Facing nimbate bust of Christ Pantokrator. Rev. Arabic legend in five lines. Good very fine.

7



595 Seljuq of Syria. Fals (bronze, 2.92 g, 20 mm), Antioch. Lion standing to right. Rev. Arabic legend. Nearly very fine.

7



596 Seljuq of Syria. Fals (bronze, 5.11 g, 24 mm), Antioch. Lion standing to right. Rev. Arabic legend. Nearly very fine.

7



597 Seljuq of Syria. Fals (bronze, 3.85 g, 23 mm), Antioch. Lion standing to right. Rev. Arabic legend. Nearly very fine.

7



598 Seljuq of Syria. Fals (bronze, 2.32 g, 20 mm), Antioch. Lion standing to right. Rev. Arabic legend. Nearly very fine.

7



599 Seljuq of Syria, Anonymous, AH 478-491 / 1086-1098 AD. Fals (bronze, 3.21 g, 27 mm), Antioch. Caparisoned elephant standing to right surrounded by floral ornaments; above, crescent with stars. Rev. Arabi legend within floral border. Fine.

7



600 Islamic. Fals (bronze, 2.80 g, 17 mm). Nearly very fine.

7



601 Islamic. Fals (bronze, 1.95 g, 13 mm). Nearly very fine.

7



602 Islamic. Fals (bronze, 2.99 g, 16 mm). Nearly very fine.

7



603 Islamic. Fals (bronze, 2.82 g, 18 mm). Nearly very fine.

7



604 Islamic. Fals (bronze, 1.84 g, 13 mm). Nearly very fine.

7



605 Islamic. Fals (bronze, 2.83 g, 18 mm). Nearly very fine.

7



606 Islamic. Fals (bronze, 3.23 g, 13 mm). Nearly very fine.

7



607 Islamic. Fals (bronze, 4.32 g, 20 mm). Nearly very fine.

7



608 Islamic. Fals (bronze, 3.20 g, 17 mm). Nearly very fine.

7



609 Islamic. Fals (bronze, 1.70 g, 17 mm). Nearly very fine.

7



610 Islamic. Fals (bronze, 3.06 g, 17 mm). Nearly very fine.

7



611 Islamic. Fals (bronze, 9.03 g, 26 mm). Nearly very fine.

7



612 Islamic. Fals (bronze, 3.50 g, 18 mm). Nearly very fine.

7



613 Islamic. Fals (bronze, 1.65 g, 13 mm). Nearly very fine.

7



614 Islamic. Fals (bronze, 2.20 g, 17 mm). Nearly very fine.

7



615 Islamic. Fals (bronze, 3.05 g, 17 mm). Nearly very fine.

7



616 Islamic. Fals (bronze, 1.33 g, 12 mm). Nearly very fine.

7



617 Islamic. Fals (bronze, 1.66 g, 16 mm). Nearly very fine.

7



618 Islamic. Fals (bronze, 1.96 g, 16 mm). Nearly very fine.

7



619 Islamic. Fals (bronze, 1.61 g, 16 mm). Nearly very fine.

7



620 Islamic. Fals (bronze, 5.19 g, 15 mm). Nearly very fine.

7



621 Islamic. Fals (bronze, 2.05 g, 15 mm). Nearly very fine.

7



622 Islamic. Fals (bronze, 2.27 g, 19 mm). Nearly very fine.

7



623 Islamic. Fals (bronze, 3.21 g, 17 mm). Nearly very fine.

7



624 Islamic. Fals (bronze, 3.12 g, 18 mm). Nearly very fine.

7



625 Islamic. Fals (bronze, 4.02 g, 16 mm). Nearly very fine.

7



626 Islamic. Fals (bronze, 1.94 g, 20 mm). Nearly very fine.

7



627 Islamic. Fals (bronze, 1.80 g, 17 mm). Nearly very fine.

7



628 Islamic. Fals (bronze, 2.49 g, 16 mm). Nearly very fine.

7



629 Islamic. Fals (bronze, 2.72 g, 19 mm). Nearly very fine.

7



630 Islamic. Fals (bronze, 2.48 g, 13 mm). Nearly very fine.

7



631 Islamic. Fals (bronze, 3.17 g, 19 mm). Nearly very fine.

7



632 Islamic. Fals (bronze, 1.63 g, 16 mm). Nearly very fine.

7



633 Islamic. Fals (bronze, 2.41 g, 16 mm). Nearly very fine.

7



634 Islamic. Fals (bronze, 2.68 g, 18 mm). Nearly very fine.

7



635 Islamic. Fals (bronze, 1.46 g, 17 mm). Nearly very fine.

7



636 Islamic. Fals (bronze, 2.22 g, 17 mm). Nearly very fine.

7



637 Islamic. Fals (bronze, 0.85 g, 14 mm). Nearly very fine.

7



638 Islamic. Fals (bronze, 0.92 g, 16 mm). Nearly very fine.

7



639 Islamic. Fals (bronze, 1.11 g, 15 mm). Nearly very fine.

7



640 Islamic. Fals (bronze, 1.82 g, 16 mm). Nearly very fine.

7



641 Islamic. Fals (bronze, 2.57 g, 15 mm). Nearly very fine.

7



642 Islamic. Fals (bronze, 1.22 g, 16 mm). Nearly very fine.

7



643 Islamic. Fals (bronze, 1.74 g, 14 mm). Nearly very fine.

7



644 Islamic. Fals (bronze, 1.98 g, 11 mm). Nearly very fine.

7



645 Islamic. Fals (bronze, 2.80 g, 18 mm). Nearly very fine.

7



646 Islamic. Fals (bronze, 3.46 g, 14 mm). Nearly very fine.

7



647 Islamic. Fals (bronze, 2.64 g, 15 mm). Nearly very fine.

7



648 Islamic. Fals (bronze, 5.72 g, 19 mm). Nearly very fine.

7



649 Islamic. Fals (bronze, 2.09 g, 14 mm). Nearly very fine.

7



650 Islamic. Fals (bronze, 2.91 g, 16 mm). Nearly very fine.

7



651 Islamic. Fals (bronze, 2.91 g, 18 mm). Nearly very fine.

7



652 Islamic. Fals (bronze, 0.66 g, 16 mm). Nearly very fine.

7



653 Islamic. Fals (bronze, 2.34 g, 17 mm). Nearly very fine.

7



654 Islamic. Fals (bronze, 3.39 g, 12 mm). Nearly very fine.

7



655 Islamic. Fals (bronze, 1.51 g, 15 mm). Nearly very fine.

7



656 Islamic. Fals (bronze, 3.37 g, 16 mm). Nearly very fine.

7



657 Islamic. Fals (bronze, 1.72 g, 17 mm). Nearly very fine.

7



658 Islamic. Fals (bronze, 1.43 g, 15 mm). Nearly very fine.

7



659 Islamic. Fals (bronze, 1.86 g, 15 mm). Nearly very fine.

7



660 Islamic. Fals (bronze, 2.82 g, 18 mm). Nearly very fine.

7



661 Islamic. Fals (bronze, 1.51 g, 15 mm). Nearly very fine.

7



662 Islamic. Fals (bronze, 1.46 g, 19 mm). Nearly very fine.

7



663 Islamic. Fals (bronze, 1.61 g, 14 mm). Nearly very fine.

7



664 Islamic. Fals (bronze, 1.63 g, 15 mm). Nearly very fine.

7



665 Islamic. Fals (bronze, 2.16 g, 15 mm). Nearly very fine.

7



666 Islamic. Fals (bronze, 0.90 g, 16 mm). Nearly very fine.

7



667 Islamic. Fals (bronze, 2.65 g, 16 mm). Nearly very fine.

7



668 Islamic. Fals (bronze, 0.87 g, 14 mm). Nearly very fine.

7



669 Islamic. Fals (bronze, 1.82 g, 14 mm). Nearly very fine.

7



670 Islamic. Fals (bronze, 1.53 g, 16 mm). Nearly very fine.

7



671 Islamic. Fals (bronze, 3.14 g, 15 mm). Nearly very fine.

7



672 Islamic. Fals (bronze, 2.26 g, 18 mm). Nearly very fine.

7



673 Islamic. Fals (bronze, 3.42 g, 18 mm). Nearly very fine.

7



674 Islamic. Fals (bronze, 2.56 g, 17 mm). Nearly very fine.

7



675 Islamic. Fals (bronze, 4.06 g, 18 mm). Nearly very fine.

7



676 Islamic. Fals (bronze, 1.26 g, 13 mm). Nearly very fine.

7



677 Islamic. Fals (bronze, 1.23 g, 18 mm). Nearly very fine.

7



678 Islamic. Fals (bronze, 1.60 g, 19 mm). Nearly very fine.

7



679 Islamic. Fals (bronze, 2.47 g, 12 mm). Nearly very fine.

7



680 Islamic. Fals (bronze, 1.26 g, 13 mm). Nearly very fine.

7



681 Islamic. Fals (bronze, 1.52 g, 11 mm). Nearly very fine.

7



682 Islamic. Fals (bronze, 1.57 g, 14 mm). Nearly very fine.

7



683 Islamic. Fals (bronze, 1.40 g, 10 mm). Nearly very fine.

7



684 Islamic. Fals (bronze, 1.93 g, 14 mm). Nearly very fine.

7



685 Islamic. Fals (bronze, 3.67 g, 21 mm). Nearly very fine.

7



686 Islamic. Fals (bronze, 3.01 g, 18 mm). Nearly very fine.

7



687 Islamic. Fals (bronze, 1.98 g, 17 mm). Nearly very fine.

7



688 Islamic. Fals (bronze, 2.97 g, 17 mm). Nearly very fine.

7



689 Islamic. Fals (bronze, 2.05 g, 18 mm). Nearly very fine.

7



690 Islamic. Fals (bronze, 2.71 g, 15 mm). Nearly very fine.

7



691 Islamic. Fals (bronze, 2.66 g, 18 mm). Nearly very fine.

7



692 Islamic. Fals (bronze, 2.65 g, 19 mm). Nearly very fine.

7



693 Islamic. Fals (bronze, 4.90 g, 23 mm). Nearly very fine.

7



694 Islamic. Fals (bronze, 1.06 g, 12 mm). Nearly very fine.

7



695 Islamic. Fals (bronze, 4.13 g, 20 mm). Nearly very fine.

7



696 Islamic. Fals (bronze, 1.83 g, 14 mm). Nearly very fine.

7



697 Islamic. Fals (bronze, 2.23 g, 15 mm). Nearly very fine.

7



698 Islamic. Fals (bronze, 3.74 g, 20 mm). Nearly very fine.

7



699 Islamic. Fals (bronze, 1.52 g, 13 mm). Nearly very fine.

7



700 Islamic. Fals (bronze, 3.11 g, 17 mm). Nearly very fine.

7



701 Islamic. Fals (bronze, 1.44 g, 19 mm). Nearly very fine.

7



702 Islamic. Fals (bronze, 2.63 g, 17 mm). Nearly very fine.

7



703 Islamic. Fals (bronze, 1.45 g, 16 mm). Nearly very fine.

7



704 Islamic. Fals (bronze, 2.93 g, 15 mm). Nearly very fine.

7



705 Islamic. Fals (bronze, 4.74 g, 24 mm). Nearly very fine.

7



706 Islamic. Fals (bronze, 2.46 g, 20 mm). Nearly very fine.

7



707 Islamic. Fals (bronze, 1.08 g, 12 mm). Nearly very fine.

7



708 Islamic. Fals (bronze, 3.43 g, 23 mm). Nearly very fine.

7



709 Islamic. Fals (bronze, 5.03 g, 27 mm). Nearly very fine.

7



710 Islamic. Fals (bronze, 3.27 g, 15 mm). Nearly very fine.

7



711 Islamic. Fals (bronze, 1.17 g, 19 mm). Nearly very fine.

7



712 Islamic. Fals (bronze, 1.99 g, 18 mm). Nearly very fine.

7



713 Islamic. Fals (bronze, 3.85 g, 19 mm). Nearly very fine.

7



714 Islamic. Fals (bronze, 3.04 g, 18 mm). Nearly very fine.

7



715 Islamic. Fals (bronze, 2.46 g, 16 mm). Nearly very fine.

7



716 Islamic. Fals (bronze, 2.39 g, 14 mm). Nearly very fine.

7



717 Islamic. Fals (bronze, 2.78 g, 16 mm). Nearly very fine.

7



718 Islamic. Fals (bronze, 3.05 g, 14 mm). Nearly very fine.

7



719 Islamic. Fals (bronze, 1.36 g, 16 mm). Nearly very fine.

7



720 Islamic. Fals (bronze, 1.91 g, 19 mm). Nearly very fine.

7



721 Islamic. Fals (bronze, 1.38 g, 12 mm). Nearly very fine.

7



722 Islamic. Fals (bronze, 2.62 g, 23 mm). Nearly very fine.

7



723 Islamic. Fals (bronze, 2.02 g, 15 mm). Nearly very fine.

7



724 Islamic. Fals (bronze, 2.85 g, 19 mm). Nearly very fine.

7



725 Islamic. Fals (bronze, 2.54 g, 15 mm). Nearly very fine.

7



726 Islamic. Fals (bronze, 0.76 g, 15 mm). Nearly very fine.

7



727 Islamic. Fals (bronze, 2.12 g, 18 mm). Nearly very fine.

7



728 Islamic. Fals (bronze, 1.83 g, 15 mm). Nearly very fine.

7



729 Islamic. Fals (bronze, 1.20 g, 13 mm). Nearly very fine.

7



730 Islamic. Fals (bronze, 0.89 g, 15 mm). Nearly very fine.

7



731 Islamic. Fals (bronze, 2.28 g, 18 mm). Nearly very fine.

7



732 Islamic. Fals (bronze, 1.55 g, 15 mm). Nearly very fine.

7



733 Islamic. Fals (bronze, 2.68 g, 15 mm). Nearly very fine.

7



734 Islamic. Fals (bronze, 1.13 g, 16 mm). Nearly very fine.

7



735 Islamic. Fals (bronze, 2.34 g, 15 mm). Nearly very fine.

7



736 Islamic. Fals (bronze, 1.71 g, 19 mm). Nearly very fine.

7



737 Islamic. Fals (bronze, 0.74 g, 16 mm). Nearly very fine.

7



738 Islamic. Fals (bronze, 1.86 g, 19 mm). Nearly very fine.

7



739 Islamic. Fals (bronze, 1.38 g, 17 mm). Nearly very fine.

7



740 Islamic. Fals (bronze, 3.19 g, 17 mm). Nearly very fine.

7



741 Islamic. Fals (bronze, 2.60 g, 19 mm). Nearly very fine.

7



742 Islamic. Fals (bronze, 4.91 g, 19 mm). Nearly very fine.

7



743 Islamic. Fals (bronze, 0.83 g, 16 mm). Nearly very fine.

7



744 Islamic. Fals (bronze, 1.10 g, 17 mm). Nearly very fine.

7



745 Islamic. Fals (bronze, 3.26 g, 16 mm). Nearly very fine.

7



746 Islamic. Fals (bronze, 4.12 g, 20 mm). Nearly very fine.

7



747 Islamic. Fals (bronze, 1.65 g, 13 mm). Nearly very fine.

7



748 Islamic. Fals (bronze, 1.62 g, 19 mm). Nearly very fine.

7



749 Islamic. Fals (bronze, 2.18 g, 15 mm). Nearly very fine.

7



750 Islamic. Fals (bronze, 3.44 g, 17 mm). Nearly very fine.

7



751 Islamic. Fals (bronze, 1.34 g, 18 mm). Nearly very fine.

7



752 Islamic. Fals (bronze, 1.85 g, 17 mm). Nearly very fine.

7



753 Islamic. Fals (bronze, 3.31 g, 15 mm). Nearly very fine.

7



754 Islamic. Fals (bronze, 1.16 g, 15 mm). Nearly very fine.

7



755 Islamic. Fals (bronze, 1.16 g, 12 mm). Nearly very fine.

7



756 Islamic. Fals (bronze, 3.52 g, 15 mm). Nearly very fine.

7



757 Islamic. Fals (bronze, 1.65 g, 17 mm). Nearly very fine.

7



758 Islamic. Fals (bronze, 2.40 g, 14 mm). Nearly very fine.

7



759 Islamic. Fals (bronze, 2.35 g, 18 mm). Nearly very fine.

7



760 Islamic. Fals (bronze, 2.49 g, 18 mm). Nearly very fine.

7



761 Islamic. Fals (bronze, 1.58 g, 15 mm). Nearly very fine.

7



762 Islamic. Fals (bronze, 1.88 g, 18 mm). Nearly very fine.

7



763 Islamic. Fals (bronze, 0.62 g, 13 mm). Nearly very fine.

7



764 Islamic. Fals (bronze, 1.37 g, 12 mm). Nearly very fine.

7



765 Islamic. Fals (bronze, 1.46 g, 19 mm). Nearly very fine.

7



766 Islamic. Fals (bronze, 1.18 g, 16 mm). Nearly very fine.

7



767 Islamic. Fals (bronze, 1.43 g, 13 mm). Nearly very fine.

7



768 Islamic. Fals (bronze, 2.30 g, 17 mm). Nearly very fine.

7



769 Islamic. Fals (bronze, 1.24 g, 16 mm). Nearly very fine.

7



770 Islamic. Fals (bronze, 1.42 g, 18 mm). Nearly very fine.

7



771 Islamic. Fals (bronze, 1.67 g, 20 mm). Nearly very fine.

7



772 Islamic. Fals (bronze, 1.51 g, 15 mm). Nearly very fine.

7



773 Islamic. Fals (bronze, 4.30 g, 22 mm). Nearly very fine.

7



774 Islamic. Fals (bronze, 0.96 g, 17 mm). Nearly very fine.

7



775 Islamic. Fals (bronze, 2.30 g, 18 mm). Nearly very fine.

7



776 Islamic. Fals (bronze, 1.00 g, 13 mm). Nearly very fine.

7



777 Islamic. Fals (bronze, 1.36 g, 18 mm). Nearly very fine.

7



778 Islamic. Fals (bronze, 0.83 g, 13 mm). Nearly very fine.

7



779 Islamic. Fals (bronze, 2.59 g, 19 mm). Nearly very fine.

7



780 Islamic. Fals (bronze, 1.84 g, 20 mm). Nearly very fine.

7



781 Islamic. Fals (bronze, 2.51 g, 18 mm). Nearly very fine.

7



782 Islamic. Fals (bronze, 3.36 g, 25 mm). Nearly very fine.

7



783 Islamic. Fals (bronze, 1.16 g, 18 mm). Nearly very fine.

7



784 Islamic. Fals (bronze, 1.33 g, 18 mm). Nearly very fine.

7



785 Islamic. Fals (bronze, 1.70 g, 17 mm). Nearly very fine.

7



786 Islamic. Fals (bronze, 2.36 g, 19 mm). Nearly very fine.

7



787 Islamic. Fals (bronze, 2.87 g, 17 mm). Nearly very fine.

7



788 Islamic. Fals (bronze, 1.38 g, 20 mm). Nearly very fine.

7



789 Islamic. Fals (bronze, 3.09 g, 22 mm). Nearly very fine.

7



790 Islamic. Fals (bronze, 1.56 g, 17 mm). Nearly very fine.

7



791 Islamic. Fals (bronze, 3.74 g, 23 mm). Nearly very fine.

7



792 Islamic. Fals (bronze, 1.49 g, 19 mm). Nearly very fine.

7



793 Islamic. Fals (bronze, 3.24 g, 20 mm). Nearly very fine.

7



794 Islamic. Fals (bronze, 2.97 g, 21 mm). Nearly very fine.

7



795 Islamic. Fals (bronze, 3.88 g, 20 mm). Nearly very fine.

7



796 Islamic. Fals (bronze, 1.73 g, 18 mm). Nearly very fine.

7



797 Islamic. Fals (bronze, 3.64 g, 19 mm). Nearly very fine.

7



798 Islamic. Fals (bronze, 2.13 g, 18 mm). Nearly very fine.

7



799 Islamic. Fals (bronze, 3.13 g, 20 mm). Nearly very fine.

7



800 Islamic. Fals (bronze, 2.77 g, 19 mm). Nearly very fine.

7



801 Islamic. Fals (bronze, 2.54 g, 21 mm). Nearly very fine.

7



802 Islamic. Fals (bronze, 3.65 g, 22 mm). Nearly very fine.

7



803 Islamic. Fals (bronze, 5.67 g, 22 mm). Nearly very fine.

7



804 Islamic. Fals (bronze, 2.90 g, 15 mm). Nearly very fine.

7



805 Islamic. Fals (bronze, 2.78 g, 16 mm). Nearly very fine.

7



806 Islamic. Fals (bronze, 2.91 g, 21 mm). Nearly very fine.

7



807 Islamic. Fals (bronze, 2.20 g, 20 mm). Nearly very fine.

7



808 Islamic. Fals (bronze, 3.76 g, 19 mm). Nearly very fine.

7



809 Islamic. Fals (bronze, 1.83 g, 18 mm). Nearly very fine.

7



810 Islamic. Fals (bronze, 0.81 g, 18 mm). Nearly very fine.

7



811 Islamic. Fals (bronze, 3.14 g, 18 mm). Nearly very fine.

7



812 Islamic. Fals (bronze, 2.46 g, 17 mm). Nearly very fine.

7



813 Islamic. Fals (bronze, 1.55 g, 16 mm). Nearly very fine.

7



814 Islamic. Fals (bronze, 2.97 g, 23 mm). Nearly very fine.

7



815 Islamic. Fals (bronze, 1.34 g, 16 mm). Nearly very fine.

7



816 Islamic. Fals (bronze, 2.24 g, 16 mm). Nearly very fine.

7



817 Islamic. Fals (bronze, 1.38 g, 17 mm). Nearly very fine.

7



818 Islamic. Fals (bronze, 1.57 g, 12 mm). Nearly very fine.

7



819 Islamic. Fals (bronze, 1.71 g, 16 mm). Nearly very fine.

7



820 Islamic. Fals (bronze, 1.54 g, 18 mm). Nearly very fine.

7



821 Islamic. Fals (bronze, 1.57 g, 14 mm). Nearly very fine.

7



822 Islamic. Fals (bronze, 1.36 g, 13 mm). Nearly very fine.

7



823 Islamic. Fals (bronze, 4.44 g, 23 mm). Nearly very fine.

7



824 Islamic. Fals (bronze, 2.77 g, 19 mm). Nearly very fine.

7



825 Islamic. Fals (bronze, 1.46 g, 21 mm). Nearly very fine.

7



826 Islamic. Fals (bronze, 2.75 g, 21 mm). Nearly very fine.

7



827 Islamic. Fals (bronze, 2.87 g, 15 mm). Nearly very fine.

7



828 Islamic. Fals (bronze, 1.88 g, 18 mm). Nearly very fine.

7



829 Islamic. Fals (bronze, 1.93 g, 18 mm). Nearly very fine.

7



830 Islamic. Fals (bronze, 3.01 g, 21 mm). Nearly very fine.

7



831 Islamic. Fals (bronze, 2.48 g, 14 mm). Nearly very fine.

7



832 Islamic. Fals (bronze, 1.19 g, 15 mm). Nearly very fine.

7



833 Islamic. Fals (bronze, 2.82 g, 15 mm). Nearly very fine.

7



834 Islamic. Fals (bronze, 2.12 g, 15 mm). Nearly very fine.

7



835 Islamic. Fals (bronze, 1.30 g, 11 mm). Nearly very fine.

7



836 Islamic. Fals (bronze, 4.82 g, 20 mm). Nearly very fine.

7



837 Islamic. Fals (bronze, 4.99 g, 24 mm). Nearly very fine.

7



838 Islamic. Fals (bronze, 2.34 g, 20 mm). Nearly very fine.

7



839 Islamic. Fals (bronze, 1.96 g, 16 mm). Nearly very fine.

7



840 Islamic. Fals (bronze, 7.39 g, 22 mm). Nearly very fine.

7



841 Islamic. Fals (bronze, 1.43 g, 16 mm). Nearly very fine.

7



842 Islamic. Fals (bronze, 2.49 g, 21 mm). Nearly very fine.

7



843 Islamic. Fals (bronze, 1.58 g, 14 mm). Nearly very fine.

7



844 Islamic. Fals (bronze, 3.07 g, 15 mm). Nearly very fine.

7



845 Islamic. Fals (bronze, 1.06 g, 14 mm). Nearly very fine.

7



846 Islamic. Fals (bronze, 4.37 g, 20 mm). Nearly very fine.

7



847 Islamic. Fals (bronze, 2.16 g, 18 mm). Nearly very fine.

7



848 Islamic. Fals (bronze, 1.29 g, 16 mm). Nearly very fine.

7



849 Islamic. Fals (bronze, 2.96 g, 15 mm). Nearly very fine.

7



850 Islamic. Fals (bronze, 1.72 g, 17 mm). Nearly very fine.

7



851 Islamic. Fals (bronze, 1.42 g, 15 mm). Nearly very fine.

7



852 Islamic. Fals (bronze, 1.86 g, 16 mm). Nearly very fine.

7



853 Islamic. Fals (bronze, 1.12 g, 14 mm). Nearly very fine.

7



854 Islamic. Fals (bronze, 2.48 g, 18 mm). Nearly very fine.

7



855 Islamic. Fals (bronze, 3.11 g, 21 mm). Nearly very fine.

7



856 Islamic. Fals (bronze, 1.24 g, 17 mm). Nearly very fine.

7



857 Islamic. Fals (bronze, 3.15 g, 15 mm). Nearly very fine.

7



858 Islamic. Fals (bronze, 4.09 g, 23 mm). Nearly very fine.

7



859 Islamic. Fals (bronze, 1.52 g, 20 mm). Nearly very fine.

7



860 Islamic. Fals (bronze, 1.14 g, 18 mm). Nearly very fine.

7



861 Islamic. Fals (bronze, 1.63 g, 14x12 mm). Nearly very fine.

7



862 Islamic. Fals (bronze, 2.41 g, 18 mm). Nearly very fine.

7



863 Islamic. Fals (bronze, 2.78 g, 18 mm). Nearly very fine.

7



864 Islamic. Fals (bronze, 3.12 g, 18 mm). Nearly very fine.

7



865 Islamic. Fals (bronze, 3.21 g, 18 mm). Nearly very fine.

7



866 Islamic. Fals (bronze, 2.27 g, 18 mm). Nearly very fine.

7



867 Islamic. Fals (bronze, 4.82 g, 12 mm). Nearly very fine.

7



868 Islamic. Fals (bronze, 2.81 g, 16 mm). Nearly very fine.

7



869 Islamic. Fals (bronze, 4.96 g, 16 mm). Nearly very fine.

7



870 Islamic. Fals (bronze, 2.69 g, 17 mm). Nearly very fine.

7



871 Islamic. Fals (bronze, 3.17 g, 16 mm). Nearly very fine.

7



872 Islamic. Fals (bronze, 2.35 g, 17 mm). Nearly very fine.

7



873 Islamic. Fals (bronze, 3.09 g, 17 mm). Nearly very fine.

7



874 Islamic. Fals (bronze, 1.10 g, 16 mm). Nearly very fine.

7



875 Islamic. Fals (bronze, 2.50 g, 17 mm). Nearly very fine.

7



876 Islamic. Fals (bronze, 1.95 g, 16 mm). Nearly very fine.

7



877 Islamic. Fals (bronze, 2.27 g, 16 mm). Nearly very fine.

7



878 Islamic. Fals (bronze, 2.23 g, 18 mm). Nearly very fine.

7



879 Islamic. Fals (bronze, 0.90 g, 15 mm). Nearly very fine.

7



880 Islamic. Fals (bronze, 2.40 g, 14 mm). Nearly very fine.

7



881 Islamic. Fals (bronze, 2.93 g, 19 mm). Nearly very fine.

7



882 Islamic. Fals (bronze, 1.65 g, 17 mm). Nearly very fine.

7



883 Islamic. Fals (bronze, 2.84 g, 18 mm). Nearly very fine.

7



884 Islamic. Fals (bronze, 1.40 g, 14 mm). Nearly very fine.

7



885 Islamic. Fals (bronze, 3.64 g, 17 mm). Nearly very fine.

7



886 Islamic. Fals (bronze, 4.21 g, 21 mm). Nearly very fine.

7



887 Islamic. Fals (bronze, 2.02 g, 17 mm). Nearly very fine.

7



888 Islamic. Fals (bronze, 3.28 g, 19 mm). Nearly very fine.

7



889 Islamic. Fals (bronze, 2.84 g, 18 mm). Nearly very fine.

7



890 Islamic. Fals (bronze, 3.70 g, 17 mm). Nearly very fine.

7



891 Islamic. Fals (bronze, 3.95 g, 24 mm). Nearly very fine.

7



892 Islamic. Fals (bronze, 2.09 g, 15 mm). Nearly very fine.

7



893 Islamic. Fals (bronze, 6.64 g, 20 mm). Nearly very fine.

7



894 Islamic. Fals (bronze, 1.52 g, 16 mm). Nearly very fine.

7



895 Islamic. Fals (bronze, 2.84 g, 15 mm). Nearly very fine.

7



896 Islamic. Fals (bronze, 0.75 g, 16 mm). Nearly very fine.

7



897 Islamic. Fals (bronze, 3.79 g, 26 mm). Nearly very fine.

7



898 Islamic. Fals (bronze, 3.48 g, 17 mm). Nearly very fine.

7



899 Islamic. Fals (bronze, 3.05 g, 15 mm). Nearly very fine.

7



900 Islamic. Fals (bronze, 1.20 g, 18 mm). Nearly very fine.

7



901 Islamic. Fals (bronze, 2.70 g, 20 mm). Nearly very fine.

7



902 Islamic. Fals (bronze, 4.86 g, 20 mm). Nearly very fine.

7



903 Islamic. Fals (bronze, 2.38 g, 14 mm). Nearly very fine.

7



904 Islamic. Fals (bronze, 2.12 g, 15 mm). Nearly very fine.

7



905 Islamic. Fals (bronze, 4.30 g, 18 mm). Nearly very fine.

7



906 Islamic. Fals (bronze, 1.70 g, 17 mm). Nearly very fine.

7



907 Islamic. Fals (bronze, 3.07 g, 16 mm). Nearly very fine.

7



908 Islamic. Fals (bronze, 2.46 g, 16 mm). Nearly very fine.

7



909 Islamic. Fals (bronze, 2.27 g, 15 mm). Nearly very fine.

7



910 Islamic. Fals (bronze, 3.04 g, 15 mm). Nearly very fine.

7



911 Islamic. Fals (bronze, 2.04 g, 15 mm). Nearly very fine.

7



912 Islamic. Fals (bronze, 3.34 g, 14 mm). Nearly very fine.

7



913 Islamic. Fals (bronze, 2.86 g, 18 mm). Nearly very fine.

7



914 Islamic. Fals (bronze, 3.01 g, 17 mm). Nearly very fine.

7



915 Islamic. Fals (bronze, 1.52 g, 18 mm). Nearly very fine.

7



916 Islamic. Fals (bronze, 2.09 g, 19 mm). Nearly very fine.

7



917 Islamic. Fals (bronze, 1.85 g, 21 mm). Nearly very fine.

7



918 Islamic. Fals (bronze, 1.51 g, 13 mm). Nearly very fine.

7



919 Islamic. Fals (bronze, 3.26 g, 20 mm). Nearly very fine.

7



920 Islamic. Fals (bronze, 2.68 g, 20 mm). Nearly very fine.

7



921 Islamic. Fals (bronze, 0.87 g, 17 mm). Nearly very fine.

7



922 Islamic. Fals (bronze, 1.03 g, 16 mm). Nearly very fine.

7



923 Islamic. Fals (bronze, 2.55 g, 18 mm). Nearly very fine.

7



924 Islamic. Fals (bronze, 2.40 g, 15 mm). Nearly very fine.

7



925 Islamic. Fals (bronze, 2.33 g, 17 mm). Nearly very fine.

7



926 Islamic. Fals (bronze, 2.36 g, 17 mm). Nearly very fine.

7



927 Islamic. Fals (bronze, 3.40 g, 14 mm). Nearly very fine.

7



928 Islamic. Fals (bronze, 2.87 g, 15 mm). Nearly very fine.

7



929 Islamic. Fals (bronze, 1.11 g, 18 mm). Nearly very fine.

7



930 Islamic. Fals (bronze, 1.77 g, 16 mm). Nearly very fine.

7



931 Islamic. Fals (bronze, 2.66 g, 20 mm). Nearly very fine.

7



932 Islamic. Fals (bronze, 2.21 g, 13 mm). Nearly very fine.

7



933 Islamic. Fals (bronze, 2.82 g, 19 mm). Nearly very fine.

7



934 Islamic. Fals (bronze, 2.72 g, 16 mm). Nearly very fine.

7



935 Islamic. Fals (bronze, 1.61 g, 14 mm). Nearly very fine.

7



936 Islamic. Fals (bronze, 1.49 g, 17 mm). Nearly very fine.

7



937 Islamic. Fals (bronze, 2.36 g, 16 mm). Nearly very fine.

7



938 Islamic. Fals (bronze, 1.74 g, 17 mm). Nearly very fine.

7



939 Islamic. Fals (bronze, 1.42 g, 12 mm). Nearly very fine.

7



940 Islamic. Fals (bronze, 1.59 g, 17 mm). Nearly very fine.

7



941 Islamic. Fals (bronze, 1.61 g, 15 mm). Nearly very fine.

7



942 Islamic. Fals (bronze, 2.13 g, 17 mm). Nearly very fine.

7



943 Islamic. Fals (bronze, 2.00 g, 17 mm). Nearly very fine.

7



944 Islamic. Fals (bronze, 1.92 g, 17 mm). Nearly very fine.

7



945 Islamic. Fals (bronze, 1.57 g, 19 mm). Nearly very fine.

7



946 Islamic. Fals (bronze, 2.30 g, 21 mm). Nearly very fine.

7



947 Islamic. Fals (bronze, 3.87 g, 17 mm). Nearly very fine.

7



948 Islamic. Fals (bronze, 2.70 g, 16 mm). Nearly very fine.

7



949 Islamic. Fals (bronze, 1.84 g, 15 mm). Nearly very fine.

7



950 Islamic. Fals (bronze, 2.72 g, 15 mm). Nearly very fine.

7



951 Islamic. Fals (bronze, 2.46 g, 14 mm). Nearly very fine.

7



952 Islamic. Fals (bronze, 3.26 g, 17 mm). Nearly very fine.

7



953 Islamic. Fals (bronze, 0.86 g, 19 mm). Nearly very fine.

7



954 Islamic. Fals (bronze, 1.91 g, 18 mm). Nearly very fine.

7



955 Islamic. Fals (bronze, 1.41 g, 14 mm). Nearly very fine.

7



956 Islamic. Fals (bronze, 2.60 g, 17 mm). Nearly very fine.

7



957 Islamic. Fals (bronze, 2.22 g, 16 mm). Nearly very fine.

7



958 Islamic. Fals (bronze, 2.56 g, 15 mm). Nearly very fine.

7



959 Islamic. Fals (bronze, 2.55 g, 17 mm). Nearly very fine.

7



960 Islamic. Fals (bronze, 1.44 g, 16 mm). Nearly very fine.

7



961 Islamic. Fals (bronze, 1.02 g, 19 mm). Nearly very fine.

7



962 Islamic. Fals (bronze, 1.72 g, 13 mm). Nearly very fine.

7



963 Islamic. Fals (bronze, 0.99 g, 15 mm). Nearly very fine.

7



964 Islamic. Fals (bronze, 0.93 g, 10 mm). Nearly very fine.

7



965 Islamic. Fals (bronze, 1.53 g, 14 mm). Nearly very fine.

7



966 Islamic. Fals (bronze, 1.30 g, 17 mm). Nearly very fine.

7



967 Islamic. Fals (bronze, 1.74 g, 15 mm). Nearly very fine.

7



968 Islamic. Fals (bronze, 1.36 g, 16 mm). Nearly very fine.

7



969 Islamic. Fals (bronze, 2.80 g, 15 mm). Nearly very fine.

7



970 Islamic. Fals (bronze, 1.68 g, 16 mm). Nearly very fine.

7



971 Islamic. Fals (bronze, 1.42 g, 15 mm). Nearly very fine.

7



972 Islamic. Fals (bronze, 1.92 g, 15 mm). Nearly very fine.

7



973 Islamic. Fals (bronze, 2.89 g, 17 mm). Nearly very fine.

7



974 Islamic. Fals (bronze, 1.64 g, 15 mm). Nearly very fine.

7



975 Islamic. Fals (bronze, 1.49 g, 11 mm). Nearly very fine.

7



976 Islamic. Fals (bronze, 1.55 g, 11 mm). Nearly very fine.

7



977 Islamic. Fals (bronze, 1.34 g, 14 mm). Nearly very fine.

7



978 Islamic. Fals (bronze, 3.62 g, 19 mm). Nearly very fine.

7



979 Islamic. Fals (bronze, 2.79 g, 14 mm). Nearly very fine.

7



980 Islamic. Fals (bronze, 2.62 g, 14 mm). Nearly very fine.

7



981 Islamic. Fals (bronze, 2.39 g, 13 mm). Nearly very fine.

7



982 Islamic. Fals (bronze, 1.74 g, 20 mm). Nearly very fine.

7



983 Islamic. Fals (bronze, 2.73 g, 20 mm). Nearly very fine.

7



984 Islamic. Fals (bronze, 2.37 g, 16 mm). Nearly very fine.

7



985 Islamic. Fals (bronze, 3.51 g, 23 mm). Nearly very fine.

7



986 Islamic. Fals (bronze, 1.83 g, 17 mm). Nearly very fine.

7



987 Islamic. Fals (bronze, 2.91 g, 16 mm). Nearly very fine.

7



988 Islamic. Fourrée Dinar (1.49 g, 15 mm). Nearly very fine.

7



989 Islamic. Fourrée Dinar (2.02 g, 20 mm). Nearly very fine.

7



990 Islamic. Fals (bronze, 1.77 g, 20 mm). Nearly very fine.

7



991 Islamic. Fals (bronze, 1.09 g, 16 mm). Nearly very fine.

7



992 Islamic. Fals (bronze, 1.70 g, 19 mm). Nearly very fine.

7



993 Islamic. Fals (bronze, 2.49 g, 19 mm). Nearly very fine.

7



994 Islamic. Fals (bronze, 1.91 g, 20 mm). Nearly very fine.

7



995 Islamic. Fals (bronze, 1.72 g, 19 mm). Nearly very fine.

7



996 Islamic. Fals (bronze, 1.24 g, 20 mm). Nearly very fine.

7



997 Islamic. Fals (bronze, 0.59 g, 15 mm). Nearly very fine.

7



998 Islamic. Ar (silver, 2.29 g, 18 mm). Nearly very fine.

7



999 Islamic. Ar (silver, 2.92 g, 21 mm). Nearly very fine.

7



1000 Islamic. Ar (silver, 2.78 g, 18 mm). Nearly very fine.

7



1001 Islamic. Ar (silver, 1.28 g, 17 mm). Nearly very fine.

7



1002 Islamic. Ar (silver, 2.79 g, 17 mm). Nearly very fine.

7



1003 Islamic. Ar (silver, 2.51 g, 18 mm). Nearly very fine.

7



1004 Islamic. Ar (silver, 1.81 g, 15 mm). Nearly very fine.

7



1005 Islamic. Ar (silver, 2.58 g, 17 mm). Nearly very fine.

7



1006 Islamic. Ar (silver, 1.47 g, 12 mm). Nearly very fine.

7



1007 Islamic. Ar (silver, 1.46 g, 13 mm). Nearly very fine.

7



1008 Islamic. Ar (silver, 0.73 g, 10 mm). Nearly very fine.

7



1009 Islamic. Ar (silver, 2.95 g, 22 mm). Nearly very fine.

7



1010 Islamic. Ar (silver, 1.23 g, 16 mm). Nearly very fine.

7



1011 Islamic. Ar (silver, 3.47 g, 18 mm). Nearly very fine.

7



1012 Islamic. Ar (silver, 0.27 g, 11 mm). Nearly very fine.

7



1013 Islamic. Ar (silver, 2.59 g, 19 mm). Nearly very fine.

7



1014 Islamic. Ar (silver, 1.56 g, 14 mm). Nearly very fine.

7



1015 Islamic. Ar (silver, 0.50 g, 13 mm). Nearly very fine.

7



1016 ITALY. Napoli. Filippo II, 1554-1598. Mezzo Ducato (silver, 5.12 g, 27 mm). PHILIPP.D.G.REX.ARA.VTRI - 1572 Radiate and cuirassed bust right; GR/VP to left. Rev. SICILIAE.HIERVSA Crowned coat of arms. Holed, fine. Rare.

7



1017 ITALY. Venezia (Venice). Carzia (bronze, 0.55 g, 14 mm), for Cyprus. +HIERON PRIOLI DVX Cross with lozenge in each quarter. Rev. +S MARCVS VENETVS Lion rampant. Papadopoli 91; Montenegro 599. Nearly very fine.

7



1018 AUSTRIA. Holy Roman Empire. Habsburg. Leopold I, 1658-1705. 3 Kreuzer (silver, 1.28 g, 20 mm). Good fine.

7



1019 SPAIN. Philip II-IV (1556-1665). 1 Real (silver, 3.30 g, 17 mm). Nearly very fine.

7



1020 World coins. Ar (silver, 1.25 g, 16 mm).

7



1021 World coins. France (?). Ae (bronze, 0.63 g, 20 mm). Fleur-de-lis, legend around. Rev. Three fleur-de-lis. Holed, nearly very fine.

7



1022 Greek. Tesseræ (lead, 7.61 g, 20 mm).

7



1023 Greek object (bronze, 6.33 g, 16 mm).

7



1024 Greek object (bronze, 1.86 g, 13 mm).

7



1025 Uncertain object (bronze, 23.39 g, 35x16 mm).

7



1026 Byzantine seal (lead, 3.18 g, 13 mm).

7



1027 Byzantine seal (lead, 1.96 g, 15 mm).

7



1028 Byzantine seal (lead, 5.51 g, 19 mm).

7



1029 Byzantine weight (glass, 0.88 g, 15 mm).

10



1030 Byzantine weight (bronze, 26.28 g, 25 mm). Repatinated, nearly very fine.

10



1031 Byzantine weight (bronze, 4.32 g, 19 mm). Repatinated, nearly very fine.

10



1032 Byzantine weight (bronze, 13.84 g, 18x18 mm). Very fine.

10



1033 Byzantine weight (bronze, 13.19 g, 18x18 mm). Very fine.

1



1034 Byzantine weight (bronze, 8.83 g, 1x16 mm). Very fine.

1



1035 Byzantine weight (bronze, 13.48 g, 17x17 mm). Very fine.

10



1036 Byzantine weight (bronze, 13.22 g, 18x18 mm). Very fine.

10



1037 Uncertain (bronze, 1.38 g, 19 mm).

7



1038 Islamic, uncertain (bronze, 1.94 g, 21 mm).

7



1039 Islamic, uncertain (1.94 g, 21 mm).

7



1040 Group lot of circa 33 Ancient Greek coins, some repatinated. G - VF. As seen, no return

30



1041 Group lot of circa 30 Roman Provincial coins, some repatinated. G - VF. As seen, no return

30



1042 Group lot of circa 50 Roman Imperial coins, some repatinated. G - VF. As seen, no return

50



1043 Group lot of circa 50 Roman Imperial coins, some repatinated. G - VF. As seen, no return

50



1044 Group lot of circa 50 Roman Imperial coins, some repatinated. G - VF. As seen, no return

50



1045 Group lot of circa 50 Roman Imperial coins, some repatinated. G - VF. As seen, no return

50



1046 Group lot of circa 50 Roman Imperial coins, some repatinated. G - VF. As seen, no return

50



1047 Group lot of circa 50 Roman Imperial coins, some repatinated. G - VF. As seen, no return

50



1048 Group lot of circa 50 Roman Imperial coins, some repatinated. G - VF. As seen, no return

50



1049 Group lot of circa 50 Roman Imperial coins, some repatinated. G - VF. As seen, no return

50



1050 Group lot of circa 50 Roman Imperial coins, some repatinated. G - VF. As seen, no return

50



1051 Group lot of circa 60 Roman Imperial coins, some repatinated. G - VF. As seen, no return

60



1052 Group lot of circa 50 Roman Imperial coins, some repatinated. G - VF. As seen, no return

50



1053 Group lot of circa 50 Roman Imperial coins, some repatinated. G - VF. As seen, no return

50



1054 Group lot of circa 50 Roman Imperial coins, some repatinated. G - VF. As seen, no return

50



1055 Group lot of circa 50 Roman Imperial coins, some repatinated. G - VF. As seen, no return

50



1056 Group lot of circa 30 Byzantine coins, some repatinated. G
- VF. As seen, no return

30



1057 Group lot of circa 27 Byzantine coins, some repatinated. G
- VF. As seen, no return

30



1058 Group lot of circa 30 Byzantine coins, some repatinated. G
- VF. As seen, no return

30



1059 Group lot of circa 33 Byzantine coins, some repatinated. G
- VF. As seen, no return

30



1060 Group lot of circa 17 Medieval and World coins, some
repatinated. G - VF. As seen, no return

20



1061 Group lot of circa 45 Islamic coins, some repatinated. G -
VF. As seen, no return

30



1062 Group lot of circa 50 Islamic coins, some repatinated. G - VF. As seen, no return

30



1063 Group lot of 16 Islamic silver coins. G - VF. As seen, no return

20