



# Numisart

## **Auction 6**

29 September 2024

All prices are starting prices (EUR)  
PDF catalog created by [www.biddr.com](http://www.biddr.com)



**1** A FINE ROMAN BRONZE APPLIQUE BUST OF A MAENAD Circa 1st-2nd century AD. The female figure, most likely a Maenad, is wearing a chiton with two buttons at the shoulders. Her head is turned slightly to the left. Her hair is parted in the centre and encircled by an elaborate wreath of ivy leaves and berries. A further wreath, now fragmented, is framing the bust part of the figure. Both wreaths with remains of silvering. A hole in the back of her head. H 79 mm, W 68 mm Ex private French collection, Paris, acquired in the 1970s.

**1'400**



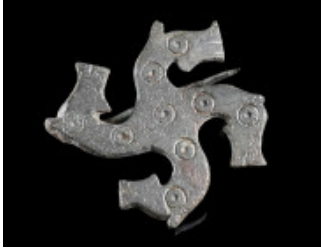
**2** A ROMAN BRONZE APPLIQUE BUST OF MINERVA Circa 2nd-3rd century AD. A solid cast, well modelled bronze applique bust depicting Minerva. The goddess with her head turned to the proper left is wearing tunic below a scaly aegis. On her head rests a high crested Corinthian helmet, decorated with two volutes on the sides. H 65 mm Private European collection. Before, A. B. collection, UK, 1970s-early 2000s.

**300**



**3** A LARGE EUROPEAN LATE BRONZE AGE SPEAR HEAD Circa 12th-9th century BC. A fine example of a socketed bronze spear head with slender leaf-shaped blade. The shaft tapers through the length of the spearhead to the point. The terminal of the shaft with incised decoration; a hole on either side for fixing. Blade slightly damaged on one side. L 22.8 cm Acquired on the UK art market before 2021. Ex old European private collection.

**300**



**4** A LARGE ROMAN BRONZE SWASTIKA BROOCH WITH HORSE HEADS Circa 2nd-3rd century AD. The eyes indicated with ring-and-dot, further ring-and-dot motifs on the body; toned tinning. With hinged pin and high catch plate. Pin probably not belonging. Diameter 45 mm Ex Austrian private collection, acquired on the European art market before 2000.

**150**



**5** A FINE ROMAN BRONZE OIL LAMP WITH CRESCENT Circa 1st-3rd century AD. Bronze oil lamp with round body and extended spout upon a raised foot; a crescent at the rear above the loop handle. Complete with lid and remains of the chains for hanging. L 84 mm, H 46 mm Ex Austrian private collection, acquired in the 1980s-90s.

**250**



**6** A LARGE ROMAN BRONZE APPLIQUE OF A YOUNG SATYR Circa 1st-2nd century AD. A fine applique in the form of a well-articulated satyr mask. His grimacing face with furrowed brow, deeply set eyes, and an open mouth. With prominent pointed ears, upswept locks of hair, and small horns at the top of the forehead. Wattles are indicated at the neck. Hollow back. H 51 mm Private European collection. Before, A. B. collection, UK, 1970s-early 2000s.

**700**



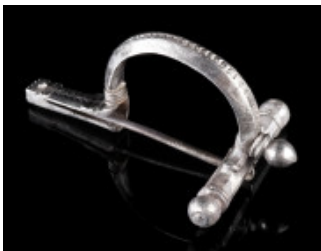
**7** A LARGE ROMAN FOOT WITH A CALCEUS PATRICIUS Circa 1st century AD. A left foot and lower leg from a large statuette wearing a calceus patricius, a closed boot featuring leather straps (corrigiae) that were wrapped around the ankle and leg and tied at the front in two knots with the ends hanging down loosely. This kind of shoes were worn by members of the Roman elite. The choice of footwear therefore informs us that the person represented was someone of high rank, probably from the equestrian or senatorial order, or possibly even the emperor himself. The size of the foot indicates that the statuette was originally around 50 cm in height, and the remains of the lead doweling below the foot show that it was set on a base, probably made of stone. A rare and outstanding artefact. L 72 mm, H 107 mm (total) Private European collection. Before, A. B. collection, UK, 1970s-early 2000s.

**700**



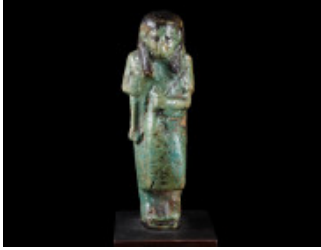
**8** A ROMAN SILVER RING WITH A CARNELIAN INTAGLIO Circa 3rd century AD. Ring with faceted, angled shoulders and projecting oval bezel set with a carnelian intaglio depicting a female head to the right. Ring size 56 (EU) Ex European private collection, acquired on the German art market before 2000.

**120**



**9** A ROMAN SILVER EARLY CROSSBOW BROOCH Circa second half of 3rd century AD. With arched bow, tubular foot with carved decoration, and three knobs; bow and foot with a running chevron pattern inlaid with (partly preserved) niello. Hinged pin. L 66 mm Ex European private collection, acquired on the art market between circa 2000-2018.

**450**



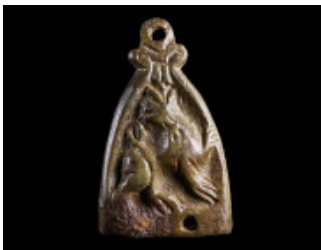
**10** AN EGYPTIAN FAIENCE OVERSEER SHABTI Third Intermediate Period, circa 1069-664 BC. An Egyptian blue-green faience 'overseer' shabti wearing a short-sleeved tunic and a projecting triangular apron. He wears a wig painted in black. The face is modelled in relief with facial features in black. The left arm is folded above the waist, and the hand holds a whip added in black. The right arm hangs down by the side of the body. The legs and feet are modelled. The front of the apron has a vertical column of inscription added in black, but the name of the owner cannot be read with any degree of certainty. With an old, inked label at the bottom of the wooden base. H 10.7 cm From an old English collection, acquired on the UK art market.

**480**



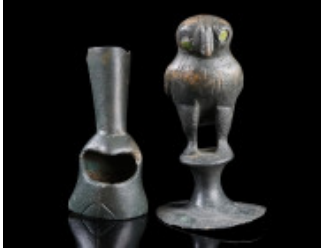
**11** A ROMAN BRONZE LAUREL WREATH Circa 1st-3rd century AD. Fine, well modelled bronze laurel wreath, probably from a large statuette of Victory. One ribbon and part of a leaf broken. H 54 mm (total), Diameter 53 mm (max.) Ex European private collection, acquired on the German art market before 2000.

**150**



**12** A FINE LATE ANGLO-SAXON BRONZE STIRRUP MOUNT Circa 10th-11th century AD. Zoomorphic mount depicting in relief a lion-like howling beast with its head turned upwards. Pierced for attachment to the stirrup strap; remains of an iron rivet preserved. H 51 mm Private European collection. Before, A. B. collection, UK, 1970s-early 2000s.

**200**



**13** A ROMAN BRONZE FIGURINE OF AN OWL Circa 1st-3rd century AD. The owl is perched on a round base, standing upright with its legs spread. The small beak is pointed, and the eyes are inlaid with green glass. Body and wings are all over decorated with an incised feather-design. Remarkably, the owl wears a removable helmet or hood with a socket on top, the function of which is unknown. A highly exceptional object! Bottom of base repaired and one eye restored; top of the socket damaged. H 97 mm (total); H 65 mm (owl with base) Acquired on the UK art market.

**1'400**



**14** A SMALL ROMAN SILVER STATUETTE OF A GENIUS Circa 1st-early 2nd century AD. Fine silver figure of a Roman genius (a 'spirit' and protective god) wearing his toga capite velato and holding a patera in his right hand. Very well rendered for the size; traces of gilding. Left hand and right foot broken. H 27 mm Ex European private collection, acquired on the German art market before 2000.

**250**



**15** A ROMAN GOLD RING WITH A CARNELIAN INTAGLIO Circa 2nd century AD. Ring with angled shoulders and projecting, oval bezel set with a carnelian intaglio depicting two ears of corn. Ring size 58 (EU); Gold! 5.20 g Ex European private collection, acquired on the German art market before 2000.

**350**



**16** TWO ROMAN BRONZE DECORATED HORSE BIT CHEEKPIECES Circa 2nd-3rd century AD. A pair of highly decorative and unusual cheekpieces in the shape of double dolphins with horse-headed tails. With elaborate incised decoration. A round loop with iron remains of the mouthpiece joins the noses of the dolphins; a rectangular loop at the top. H 82 mm, and H 86 mm Private European collection. Before, A. B. collection, UK, 1970s-early 2000s.

**400**



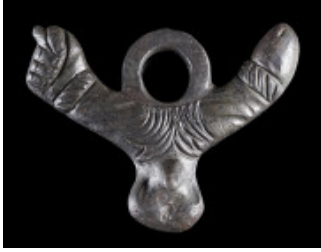
**17** A FINE DECORATED EARLY BYZANTINE GOLD CROSS Circa 5th-7th century AD. Highly elaborate gold cross with filigree decoration and a central medallion set with glass. The hollow cross is composed of sheet metal soldered together. The inside of the suspension loop is supported by glass to strengthen the construction. Compared to the Late Roman period, Early Byzantine gold objects are very rare. The lower arm of the cross was cracked/slightly bent and has been repaired. H 53 mm; Gold! 17.24 g Ex old European private collection.

**4'000**



**18** A LARGE ROMAN BRONZE SILENUS MASK APPLIQUE Circa 1st-3rd century AD. Mask applique of Silenus with highly expressive facial features. The companion of Dionysus is depicted with large, pointed ears, two tiny horns above the forehead, and a fillet of ivy along his bald pate. The almond-shaped eyes are deeply set below his furrowed, overhanging brow. He is shown with a wide snub nose and a thick beard and moustache. The back of the applique is filled with lead. H 75 mm, Depth 38 mm (max.) Private European collection. Before, A. B. collection, UK, 1970s-early 2000s.

**1'200**



**19** A FINE ROMAN BRONZE PHALLIC AMULET PENDANT Circa 1st-2nd century AD. This heavy, solid cast amulet was part of a Roman military horse harness. It incorporates three different symbols: the phallus on the right side, male genitalia in the middle, and the manus fica, a fist with the thumb wedged in between two fingers (an obscene hand gesture), on the left. All three symbols were thought to be potent apotropaic devices intended to ward off the evil eye or spirit. The pubic hair and further details are indicated by deep incisions. With a suspension loop at the top. For a comparison see the finds from the Early Roman legionary camp at Vindonissa: Ch. Unz, and E. Deschler-Erb, *Katalog der Militaria aus Vindonissa* (Brugg 1997), cat. nos. 1611-1629. W 80 mm, H 58 mm Acquired on the German art market between 2004-2010.

**200**



**20** A FINE ROMAN BRONZE STATUETTE OF A BOY / YOUNG GOD Circa 1st-2nd century AD. The well-modelled, solid cast figure shows a boy standing with his weight on the left leg, wearing a sleeveless, girded tunic. He is depicted with a rounded face, curly hair bound into a top knot above his forehead, and a central braid in the back. The left arm is raised, the right arm lowered; both hands originally held attributes. Left arm broken and reattached; left leg cracked and foot broken. An abraded area across the chest. H 10.9 cm Acquired on the UK art market before 2021. Ex old European private collection.

**1'800**





**21** A ROMAN BRONZE THEATRE MASK BROOCH Circa 2nd-3rd century AD. Brooch in the shape of a comic slave mask with frowned brow, deeply set articulated eyes, flaring nostrils, and large, wide-open mouth. A representation of a character inspired by the Greek New Comedy. Hinged; pin, part of the catch-plate, and one lug not preserved. H 31 mm Private European collection. Before, A. B. collection, UK, 1970s-early 2000s.

**300**



**22** A SMALL ROMAN BRONZE STATUETTE OF A BOUND BARBARIAN Circa 2nd-3rd century AD. The statuette depicts a bound male captive with a well-articulated face, curly hair, and a long, full beard. He is tied tightly with a rope that runs from the neck down before his knees and around the ankles. The statuette features four round holes: two horizontal, and two vertical. The function of these rare artefacts with their harsh depiction is unknown. As they were predominantly found along the Limes, some connection with the Roman military would be plausible. H 44 mm Private European collection. Before, A. B. collection, UK, 1970s-early 2000s.

**400**



**23** A ROMAN BRONZE APPLIQUE OF SALUS Circa 1st-3rd century AD. The goddess with long hair is depicted standing, wearing a girded tunic and a mantle, and feeding a snake coiled around her right arm from a patera in her left hand. A lug for attachment on either side; broken below the waist. H 49 mm Ex European private collection, acquired on the German art market before 2000.

**120**



**24** A ROMAN MARBLE HEAD OF ASCLEPIUS Circa 1st-2nd century AD. The god is depicted with a narrow face and a full beard with curly locks, his long moustache downturned. He has full, slightly parted lips, almond-shaped eyes, and soft brows merging with the bridge of the nose. The long hair is parted in the centre and falling in waves to his shoulders. Minor deposits. Loosely set on an acrylic base. H 75 mm Private European collection. Before, A. B. collection, UK, 1970s-early 2000s.

**700**



**25** A LATE ANTIQUE BRONZE FITTING WITH THE BUST OF A MAN Circa 3rd-4th century AD. Depicted is a man wearing a mantle over his shoulders, with his naked upper body visible underneath. His right hand is held in a gesture of speech. Presumably a representation of a man of letters or philosopher. With a hollow cylindrical extension for attachment at the back and a hinge below. Probably damaged by fire in antiquity. Loosely set on a wooden base. H 98 mm Private European collection. Before, A. B. collection, UK, 1970s-early 2000s.

**800**



**26** A ROMAN BRONZE APPLIQUE DEPICTING EROS Circa 2nd-3rd century AD. Octagonal applique with a head of Eros in the centre. The youthful god with chubby face is shown with curly hair and the typical central braid. The edge of the applique is partly damaged, and the back was filled with lead in antiquity. Diameter 43 mm (max.), Depth 32 mm Private European collection. Before, A. B. collection, UK, 1970s-early 2000s.

**300**



**27** A ROMAN BRONZE APPLIQUE OF A BULL Circa 2nd-3rd century AD. Protome of a bull with backwards-curving horns and projecting ears. Pierced between the horns. H 53 mm From the collection of an Austrian art dealer, acquired on the European art market.

**120**



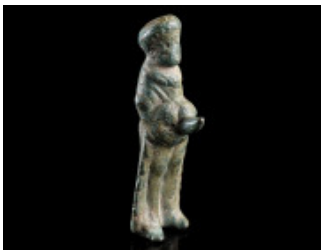
**28** A ROMAN BRONZE FOOT WITH SANDAL FROM A STATUETTE Circa 1st-2nd century AD. A well rendered, naturalistic left foot encased in a Greek trochades leather sandal with central tongue. Broken above the ankle; remains of an iron pin for attachment to the base. L 43 mm, H 30 mm Private European collection. Before, A. B. collection, UK, 1970s-early 2000s.

**400**



**29** A ROMAN BRONZE APPLIQUE OF A YOUNG SATYR Circa 2nd-3rd century AD. Expressive applique depicting the head of a young satyr in profile to left. With a fierce expression, pointed animal ears and small horns, and upswept hair above the forehead and temples. Wattles are indicated at the neck. H 32 mm Private European collection. Before, A. B. collection, UK, 1970s-early 2000s.

**200**



**30** A SMALL ROMAN BRONZE STATUETTE OF PRIAPUS Circa 2nd-3rd century AD. The bearded god of fertility is depicted wearing a long tunic, held up to contain a lapful of fruits and revealing his large, erect phallus, that also acts as a further support for the fruit. Some earthen deposits and minor damage to the patina. H 55 mm Private European collection. Before, A. B. collection, UK, 1970s-early 2000s.

**300**



**31** AN ATTRACTIVE ROMAN BRONZE HEAD OF MARS Circa 2nd-3rd century AD. A well modelled, hollow cast bronze head of Mars, probably from a statuette or bust. The god with curly hair is wearing a high crested Corinthian helmet, decorated with incised tendrils on either side. Top of the head pierced. H 36 mm Private European collection. Before, A. B. collection, UK, 1970s-early 2000s.

**200**



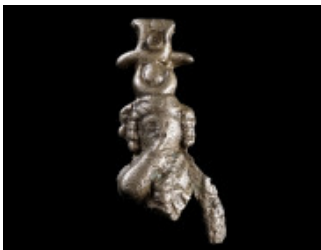
**32** A ROMAN BRONZE APPLIQUE IN THE SHAPE OF A DOLPHIN Circa 2nd-3rd century AD. Finely modelled applique in the form of a swimming dolphin. With two holes for attachment. L 39 mm Ex European private collection, acquired on the German art market before 2000.

**80**



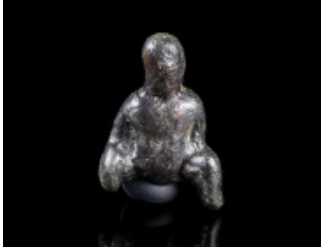
**33** A SMALL ROMAN SILVER VOTIVE FIGURE OF JUPITER Circa 1st-2nd century AD. Jupiter, the supreme god of the Roman pantheon, is depicted nude but for a mantle, with long beard and curly hair. He probably held a thunderbolt or patera in his lowered right hand and a sceptre in his raised left. Back of the figure flat. Hands/left lower arm and feet broken. H 23 mm Ex European private collection, acquired on the German art market before 2000.

**120**



**34** A ROMAN SILVER FIGURE OF HARPOCRATES Circa 1st-3rd century AD. Harpocrates, or 'Horus the Child', the son of Isis and Osiris, is depicted as a young boy with a finger to his mouth. He wears the crowns of Upper and Lower Egypt. Upper part of an amulet pendant; remains of an attachment loop for suspension at the back. Damaged and worn. H 35 mm Ex European private collection, acquired on the German art market before 2000.

**40**



**35** A ROMAN BRONZE FIGURAL AMULET PENDANT Circa 2nd-3rd century AD. Pendant in the shape of a squatting figure. Remains of a suspension loop at the back. H 19 mm Ex European private collection, acquired on the German art market before 2000.

**35**



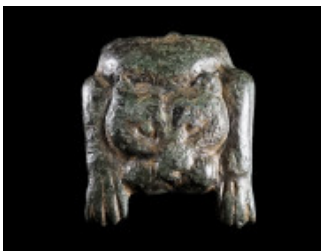
**36** A ROMAN BRONZE STATUETTE OF JUPITER OR NEPTUNE Circa 2nd-3rd century AD. The standing god is depicted nude, with long beard and hair. Both arms are raised. Arms and legs partly broken. H 54 mm Ex European private collection, acquired on the German art market before 2000.

**50**



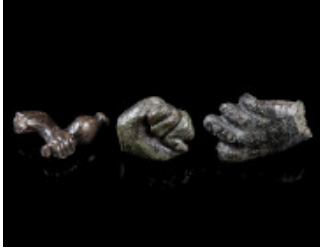
**37** A ROMAN BRONZE JUG HANDLE WITH A FEMALE HEAD Circa 2nd-3rd century AD. Lower part of a Roman jug handle with the depiction of a female head. Cleaned and probably lightly tooled. H 77 mm Ex European private collection, acquired on the German art market before 2000.

**50**



**38** A GREEK BRONZE HANDLE ATTACHMENT IN THE FORM OF A LION Circa 5th century BC. Attachment in the shape of a lion's head with paws hanging downward. The head is rendered in relief with bulging eyes, pronounced brows, and a large snout; flat on the reverse with remains of solder. H 32 mm Ex European private collection, acquired on the German art market before 2000.

**40**



**39** A GROUP OF THREE ROMAN BRONZE STATUETTE PARTS Circa 2nd-3rd century AD. Two right hands, and a right arm with money bag (marsupium) from a statuette of Mercury. Fingers of one hand partly broken. L 15-20 mm Ex European private collection, acquired on the German art market before 2000.

**50**



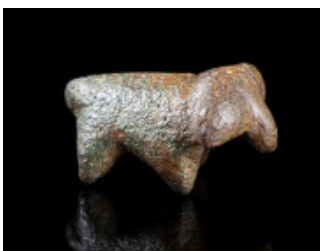
**40** AN ANCIENT BRONZE AMULET PENDANT IN THE SHAPE OF A FOOT Circa 4th-1st century BC. Amulet in the form of a foot with pronounced ankles and flat toes indicated by deep notches; pierced for suspension. H 27 mm From the collection of an Austrian art dealer, acquired on the European art market.

**100**



**41** A ROMAN BRONZE RIGHT FOOT Circa 2nd-3rd century AD. Front part of a hollow cast foot with well-articulated toes. Either from a large statuette or part of a furniture leg. L 49 mm From the collection of an Austrian art dealer, acquired on the European art market.

**70**



**42** A SMALL ARCHAIC VOTIVE FIGURE OF A RAM Circa 8th-7th century BC. Small stylised figure of a sturdy ram. L 23 mm Ex European private collection, acquired on the German art market before 2000.

**70**



**43** A GROUP OF BYZANTINE BRONZE BIRD FIGURES Circa 5th-7th century AD. Two birds facing one another; and a bird on a square base, decorated with ring-and-dot motifs. L 37 mm, and L 32 mm Ex European private collection, acquired on the German art market before 2000.

**40**



**44** TWO BYZANTINE BRONZE BIRD FIGURES Circa 5th-7th century AD. Two bird-shaped terminals from (hair) pins; with incised decoration. H 18 mm, and H 32 mm Ex European private collection, acquired on the German art market before 2000.

**40**



**45** TWO ANCIENT BRONZE BIRD APPLIQUES Circa 3rd-1st century BC. Two bird figures with a central rivet hole for attachment; one rivet still in place. L 28 mm, and L 33 mm Ex European private collection, acquired on the German art market before 2000.

**40**



**46** TWO BYZANTINE BIRD FIGURES Circa 5th-7th century AD. A bronze bird figure attached to a pivot, and a lead bird figure. H 50 mm, and H 21 mm Ex European private collection, acquired on the German art market before 2000.

**40**



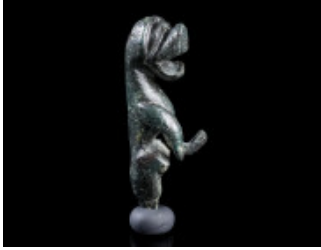
**47** TWO LATE ROMAN / BYZANTINE BRONZE BIRD FIGURES Circa 4th-7th century AD. A bird-shaped terminal from a hair pin, and a worn bird brooch. H 17 mm, and L 31 mm (brooch) Ex European private collection, acquired on the German art market before 2000.

**40**



**48** TWO ROMAN BRONZE TERMINALS WITH WOLF HEAD Circa 1st-2nd century AD. Most probably, these zoomorphic finals are from the handles of Roman ladles; the smaller wolf head was later reused as a pendant. L 28 mm, and L 42 mm Ex European private collection, acquired on the German art market before 2000.

**50**



**49** A LATE MEDIEVAL BRONZE LION FIGURE Circa 15th century AD. Stylised figure of an upright lion; legs and tail partly broken. H 44 mm  
Ex European private collection, acquired on the German art market before 2000.

**50**



**50** A MEDIEVAL COPPER ALLOY ENAMELLED LIMOGES FIGURE Circa 13th century AD. Limoges applique figure of a saint or apostle; the body with Champlévé enamel, the eyes inlaid with green glass. Two circular holes to the body where the figure would have been attached to a reliquary casket. H 78 mm  
Ex Austrian private collection, acquired in the 1980s-90s.

**150**



**51** A POST MEDIEVAL FIRE STARTER WITH A DOG Circa 18th century AD. Bronze handle part of a fire starter in the shape of a dog with its head turned back. Terminals an iron part for striking fire not preserved. L 40 mm, H 30 mm  
Ex European private collection, acquired on the German art market before 2000.

**50**



**52** A MEDIEVAL COPPER ALLOY APPLIQUE IN THE FORM OF A GRIFFIN Circa 12th-13th century AD. Applique made of sheet metal in the shape of a griffin to the left. With incised details and minor remains of gilding; at the back, a sturdy pin for attachment. H 41 mm  
From the collection of an Austrian art dealer, acquired on the European art market.

**100**



**53** A POST MEDIEVAL LEAD FIGURE OF VIRGIN MARY WITH CHILD Circa 17th-19th century AD (?). Cast figure of Mary holding Jesus in her arms; back surface unworked. H 78 mm  
Ex European private collection, acquired on the German art market before 2000.

**150**





**54** A ROMAN GOLD RING WITH A CARNELIAN INTAGLIO Circa 1st-2nd century AD. Ring with oval bezel set with a carnelian intaglio depicting a stylised figure or herm. Intaglio possibly reset into the ring. Ring size 55 (EU); Gold! 2.97 g Ex European private collection, acquired on the German art market before 2000.

**250**



**55** A ROMAN GOLD SIGNET RING WITH INSCRIPTION Circa 2nd-3rd century AD. Ring with bezel in the shape of a tabula ansata inscribed with the retrograde letters CFF. Ring size 45 (EU); Gold! 3.36 g From the collection of an Austrian art dealer, acquired on the European art market.

**600**



**56** A ROMAN SILVER RING WITH A CARNELIAN INTAGLIO Circa 3rd century AD. Heavy ring with flared shoulders and raised, round bezel set with a carnelian intaglio depicting two ears of corn. Edge of intaglio slightly chipped. Ring size 45 (EU), Length 26 mm (shoulders) From the collection of an Austrian art dealer, acquired on the European art market.

**250**



**57** A ROMAN SILVER RING WITH A CARNELIAN INTAGLIO Circa 3rd century AD. Ring with faceted, angled shoulders and projecting, oval bezel set with a carnelian intaglio depicting a female head to the left. Ring size 48 (EU) Ex European private collection, acquired on the German art market before 2000.

**120**



**58** A BEZEL OF A ROMAN IRON RING WITH A FINE CARNELIAN INTAGLIO Circa 1st-2nd century AD. Top part of a ring with an oval intaglio depicting a standing (syncretic) goddess with her left arm raised, an attribute in her right hand, and a wheel at her feet. H 14 mm (intaglio); L 22 mm (total) From the collection of an Austrian art dealer, acquired on the European art market.

**400**



**59** A ROMAN BRONZE RING WITH A SARD INTAGLIO Circa 2nd century AD. Ring with flared shoulders and an oval bezel set with a sard intaglio depicting clasped hands. Hoop somewhat bent; minor deposits. Ring size 46 (EU); L 12 mm (intaglio) From the collection of an Austrian art dealer, acquired on the European art market.

**150**



**60** A ROMAN CARNELIAN INTAGLIO DEPICTING SOL INVICTUS Circa 3rd century AD. Sol is shown standing right with his right hand raised in salutation. He wears a radiate crown and holds a whip in his left hand; from his left arm hangs a mantle. With some iron deposits, suggesting that the gem would have been set into an iron ring. H 14 mm From the collection of an Austrian art dealer, acquired on the European art market.

**200**



**61** A ROMAN BANDED AGATE INTAGLIO WITH A DANCING SATYR Circa 1st-2nd century AD. The gem shows a dancing satyr with his head turned left. The right hand is raised to the head in surprise (apokopein), and in the left hand he is holding pedum and nebris. Top and bottom edge chipped. H 11 mm From the collection of an Austrian art dealer, acquired on the European art market.

**120**



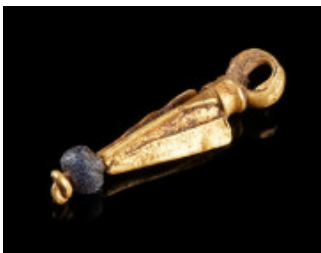
**62** A ROMAN CARNELIAN INTAGLIO WITH A STANDING FIGURE Circa 2nd-3rd century AD. The highly stylised figure is shown standing, holding a patera or bowl in the left hand, and further attributes in the right. H 10 mm From the collection of an Austrian art dealer, acquired on the European art market.

**180**



**63** A ROMAN CARNELIAN INTAGLIO WITH A DOLPHIN Circa 2nd-3rd century AD. Dolphin swimming left; chipped, especially at the reverse. L 9 mm Ex Austrian private collection, acquired on the European art market before 2000.

**80**



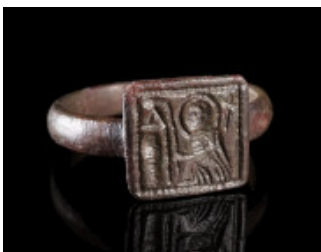
**64** A SMALL ROMAN GOLD PENDANT Circa 2nd-3rd century AD. Pendant with blue glass bead; suspension loop at the top. Somewhat bent and glass bead chipped. H 21 mm; Gold! 0.98 g Ex European private collection, acquired on the German art market before 2000.

**100**



**65** AN ELABORATELY WORKED BYZANTINE SILVER EARRING Circa 11th-12th century AD. Fine filigree earring with an intricate design. H 49 mm Ex European private collection, acquired on the German art market before 2000.

**80**



**66** A BYZANTINE BRONZE RING WITH A SAINT Circa 5th-7th century AD. Ring with square bezel featuring a nimbate saint with cross staff and staff, kneeling in front of an architectural structure (a shrine?). Ring size 64 (EU) From the collection of an Austrian art dealer, acquired on the European art market.

**90**



**67** A ROMAN SILVER RING WITH A CARNELIAN INTAGLIO Circa 3rd century AD. Ring with decorated shoulders and an offset, oval bezel set with a carnelian intaglio depicting a stylised animal (?). Somewhat worn, with minor deposits. Ring size 49 (EU) Ex European private collection, acquired on the German art market before 2000.

**70**



**68** A ROMAN BRONZE RING WITH A PORTRAIT BUST Circa 3rd century AD. Ring with angled, faceted shoulders and offset, oval bezel. The bezel features a laureate and draped portrait bust to the left, probably intended to represent an emperor. Ring size 49 (EU) From the collection of an Austrian art dealer, acquired on the European art market.

**140**



**69** A LATE ROMAN BRONZE RING WITH INSCRIPTION Circa 3rd-4th century AD. Ring with sloping, tapering shoulders and an offset, oval bezel inscribed KYRI(E) MOY ('Oh my Lord!'). Ring size 45 (EU) From the collection of an Austrian art dealer, acquired on the European art market.

**100**



**70** LATE ANTIQUE / EARLY BYZANTINE BRONZE RING WITH A WARRIOR Circa 4th-6th century AD. Ring with offset shoulders and round, raised bezel depicting a highly stylised warrior with spear and shield. Ring size 49 (EU) Ex European private collection, acquired on the German art market before 2000.

**50**



**71** A BYZANTINE / MEDIEVAL BRONZE RING WITH A HORSEMAN Circa 10th-13th century AD. Ring with offset, rectangular bezel depicting a stylised horse and rider to the left. Ring size 59 (EU) From the collection of an Austrian art dealer, acquired on the European art market.

**80**



**72** THREE LATE MEDIEVAL / EARLY MODERN RINGS Circa 15th-16th century AD. A silver ring with glass stone, a small bronze archer's ring (slightly bent), and a bronze ring with ornamental design. Ring size 47-60 (EU) Ex European private collection, acquired on the German art market before 2000.

**50**



**73** TWO ROMAN BRONZE RINGS Circa 2nd-3rd century AD. Both with offset, oval bezel. One featuring a dolphin, the other with remains of silvering. Both ring size 48 (EU) Ex European private collection, acquired on the German art market before 2000.

**50**



**74** TWO LATE MEDIEVAL / EARLY MODERN BRONZE RINGS Circa 15th-16th century AD. One with a projecting oval bezel, the other with a rectangular bezel; both decorated with an ornamental design. Both ring size 55 (EU) Ex European private collection, acquired on the German art market before 2000.

**50**



**75** TWO LATE MEDIEVAL / EARLY MODERN BRONZE RINGS Circa 15th-16th century AD. Both with an oval bezel and ornamental design. Ring size 57, and 55 (EU) Ex European private collection, acquired on the German art market before 2000.

**50**



**76** TWO LATE MEDIEVAL / EARLY MODERN BRONZE RINGS Circa 15th-16th century AD. One with a projecting (roughly) square bezel, the other with an octagonal, silvered bezel; both decorated with an ornamental design. Ring size 59, and 57 (EU) Ex European private collection, acquired on the German art market before 2000.

**50**



**77** TWO LATE MEDIEVAL / EARLY MODERN BRONZE RINGS Circa 15th-16th century AD. One with a projecting navette-shaped bezel, the other with a round bezel; both decorated with an ornamental design. Both ring size 56 (EU) Ex European private collection, acquired on the German art market before 2000.

**50**



**78** THREE MEDIEVAL / EARLY MODERN BRONZE RINGS Circa 13th-16th century AD. Three rings of different shape and design with ornamental decoration. Ring size 48-55 (EU) Ex European private collection, acquired on the German art market before 2000.

**50**



**79** TWO LATE MEDIEVAL / EARLY MODERN BRONZE RINGS Circa 15th-16th century AD. Both with an offset bezel, decorated with an ornamental design. Ring size 54, and 56 (EU) Ex European private collection, acquired on the German art market before 2000.

**50**



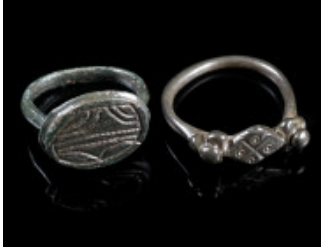
**80** THREE MEDIEVAL / EARLY MODERN BRONZE RINGS Circa 10th-16th century AD. Three rings of different shape and design with incised decoration. Ring size 51-57 (EU) Ex European private collection, acquired on the German art market before 2000.

**50**



**81** TWO LATE MEDIEVAL / EARLY MODERN BRONZE RINGS Circa 15th-16th century AD. Both with an offset bezel, decorated with an ornamental design. Ring size 55, and 59 (EU) Ex European private collection, acquired on the German art market before 2000.

**50**



**82** TWO MEDIEVAL / EARLY MODERN BRONZE RINGS Circa 10th-16th century AD. Both with an offset bezel, decorated with an ornamental design. Ring size 56, and 62 (EU) Ex European private collection, acquired on the German art market before 2000.

**50**



**83** THREE MEDIEVAL BRONZE RINGS Circa 12th-15th century AD. All with projecting bezel and ornamental design. Ring size 47-57 (EU) Ex European private collection, acquired on the German art market before 2000.

**50**



**84** THREE DELICATE BYZANTINE BRONZE RINGS Circa 5th-7th century AD. Two rings with a cross, and one depicting two standing figures. Ring size 43-57 (EU) Ex European private collection, acquired on the German art market before 2000.

**50**



**85** A BYZANTINE AND TWO MEDIEVAL BRONZE RINGS Circa 5th-7th century, and 12th-15th century AD. A small Byzantine ring with a cross, and two medieval rings of different shape and design. Ring size 50-55 (EU) Ex European private collection, acquired on the German art market before 2000.

**50**



**86** THREE LATE MEDIEVAL / EARLY MODERN BRONZE RINGS Circa 15th-16th century AD. Three rings of different shape and design with incised decoration. Ring size 49-58 (EU) Ex European private collection, acquired on the German art market before 2000.

**50**



**87** A BYZANTINE BRONZE RELIQUARY CROSS WITH A SAINT Circa 10th-12th century AD. One half of a reliquary cross (enkolpion) depicting a saint wearing an elaborate robe, with his hands upraised in prayer ('orans'). Above, a (blundered?) Greek inscription. H 86 mm Acquired on the German art market between 2004-2010.

**120**



**88** A BYZANTINE BRONZE RELIQUARY CROSS WITH CHRIST AND MARY Circa 10th-12th century AD. A reliquary cross (enkolpion) depicting Christ crucified on one side, and Virgin Mary with her hands upraised in prayer ('orans') on the other. The cross arms are further decorated with incised crosses and stars. Surface somewhat pitted; hinge axes probably repaired. H 67 mm Acquired on the German art market between 2004-2010.

**100**



**89** TWO BYZANTINE BRONZE CROSSES Circa 6th-12th century AD. One half of a reliquary cross depicting Christ crucified, and a small cross pendant. H 46 mm, and H 22 mm Ex European private collection, acquired on the German art market before 2000.

**50**



**90** TWO BYZANTINE BRONZE CROSSES Circa 6th-12th century AD. A plain cross with two holes for attachment, and a cross pendant. H 53 mm, and H 45 mm Ex European private collection, acquired on the German art market before 2000.

**50**





**91** TWO BYZANTINE BRONZE CROSSES Circa 6th-12th century AD. One half of a reliquary cross depicting Christ crucified, and a small cross pendant. H 50 mm, and H 24 mm Ex European private collection, acquired on the German art market before 2000.

**50**



**92** THREE BRONZE CROSS PENDANTS Circa 10th-12th century, and 18th-19th (?) century AD. Two Byzantine cross pendants, and a (early) modern pendant with traces of enamel. H 23-30 mm Ex European private collection, acquired on the German art market before 2000.

**50**



**93** TWO BYZANTINE BRONZE CROSS PENDANTS Circa 6th-12th century AD. Two cross pendants of different shape and design. H 25 mm, and H 36 mm Ex European private collection, acquired on the German art market before 2000.

**50**



**94** TWO BYZANTINE BRONZE CROSSES Circa 11th-13th century AD. A cross pendant with an ornamental design, and a cross on a globe with incised decoration. H 46 mm, and H 36 mm Ex European private collection, acquired on the German art market before 2000.

**50**



**95** TWO BYZANTINE BRONZE CROSSES Circa 6th-12th century AD. A cross inscribed in the four corners with (barred) HC - XC (IHCOYC XPICTOC = Jesus Christ) and a further abbreviation; on the reverse incised crosses. And a small cross pendant. H 40 mm, and H 25 mm Ex European private collection, acquired on the German art market before 2000.

**50**



**96** TWO BYZANTINE BRONZE CROSSES Circa 6th-12th century AD. A bronze cross, and a small cross pendant. H 34 mm, and H 27 mm Ex European private collection, acquired on the German art market before 2000.

**50**



**97** TWO BYZANTINE BRONZE CROSS PENDANTS Circa 6th-12th century AD. One with five punched ring-and-dot motifs, symbolising the Five Wounds of Christ. The other with four punched ring-and-dot motifs. H 34 mm, and H 29 mm Ex European private collection, acquired on the German art market before 2000.

**50**



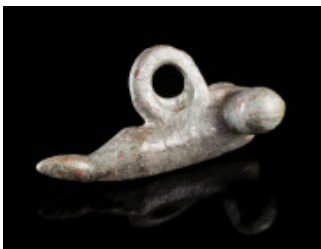
**98** A GROUP OF THREE BRONZE CROSS PENDANTS Circa 18th century AD. Three cross pendants of different shape and design. H 29-48 mm Ex European private collection, acquired on the German art market before 2000.

**50**



**99** A GROUP OF THREE BRONZE CROSS PENDANTS Circa 18th century AD. Three cross pendants of different shape and design; one with remains of silvering. H 32-33 mm Ex European private collection, acquired on the German art market before 2000.

**50**



**100** A FINE ROMAN BRONZE PHALLIC AMULET PENDANT Circa 2nd-3rd century AD. With a pointed tip representing the foreskin and an offset glans. A ridge from back to front on the underside of the phallus; a suspension loop at the top. These amulets (fascina) were thought to bring good luck and ward off evil spirits. L 37 mm From the collection of an Austrian art dealer, acquired on the European art market.

**100**



**101** A ROMAN BRONZE PHALLIC AMULET PENDANT Circa 1st-3rd century AD. This amulet incorporates a phallus on one side and the manus fica, a fist with the thumb wedged in between two fingers (a rude hand gesture), on the other. Both symbols were potent apotropaic devices intended to ward off the evil eye or spirit. Suspension loop broken due to wear. L 50 mm Acquired on the German art market between 2004-2010.

**70**



**102** A ROMAN BRONZE PHALLIC AMULET PENDANT Circa 2nd-3rd century AD. The glans offset by an indent; with a suspension loop at the top. These amulets (fascina) were thought to bring good luck and ward off evil spirits. L 32 mm Ex Austrian private collection, acquired on the European art market before 2000.

**30**



**103** A ROMAN BRONZE PHALLIC AMULET PENDANT Circa 2nd-3rd century AD. Amulet with phallus and manus fica, a fist with the thumb wedged in between two fingers (a rude hand gesture). Both symbols were potent apotropaic devices intended to ward off the evil eye or spirit. Suspension loop at the top. L 44 mm Acquired on the German art market between 2004-2010.

**100**



**104** A ROMAN BRONZE BULLA (AMULET PENDANT) Circa 1st-3rd century AD. Hollow domed on either side, forming an internal compartment; with suspension loop. A bulla is a locket that especially Roman boys wore to protect them and ward off evil spirits until they reached adulthood. Inside the bulla were placed small amulets or fragments of sacred items, most often probably made of organic material and today lost. H 25 mm Ex European private collection, acquired on the German art market before 2000.

**35**



**105** A ROMAN BRONZE BULLA (AMULET PENDANT) Circa 1st-3rd century AD. Hollow domed on either side, forming an internal compartment; with suspension loop. A bulla is a locket that especially Roman boys wore to protect them and ward off evil spirits until they reached adulthood. Inside the bulla were placed small amulets or fragments of sacred items, most often probably made of organic material and today lost. H 28 mm Ex European private collection, acquired on the German art market before 2000.

**35**



**106** AN EARLY IRON AGE BRONZE BOW FIBULA Circa 7th century BC. Made of one piece with spring and pin. L 57 mm From the collection of an Austrian art dealer, acquired on the European art market.

**75**



**107** A LARGE PHRYGIAN BRONZE FIBULA Circa 8th-7th century BC. The flat arc is cast as a semicircle with the addition of hollow studs applied as decoration on the arc and its catch and terminals. With spring and pin. For a close parallel see: The Metropolitan Museum New York, inv. no. 1970.231.1 L 67 mm From the collection of an Austrian art dealer, acquired on the European art market.

**150**



**108** A PHRYGIAN BRONZE FIBULA Circa 7th-6th century BC. With an arched and profiled bow; spring and pin separately attached in antiquity. L 61 mm From the collection of an Austrian art dealer, acquired on the European art market.

**90**



**109** A LARGE CELTIC IRON FIBULA FROM THE MIDDLE LA TENE PERIOD Circa 3rd-2nd century BC. The foot is bent upwards and attached to the bow. With spring and pin. Somewhat pitted surface. L 11.8 cm Ex Austrian private collection, acquired in the 1980s-90s.

**40**



**110** A ROMAN SILVER EARLY CROSSBOW BROOCH Circa second half of 3rd century AD. With arched bow, tubular foot, and three knobs. Hinged pin. L 63 mm Ex European private collection, acquired on the art market between circa 2000-2018.

**400**



**111** A ROMAN BRONZE OPENWORK TRUMPET BROOCH Circa 2nd-3rd century AD. Plate brooch with a Celtic trumpet-style design. Spring and pin repaired. L 40 mm Ex Austrian private collection, acquired on the European art market before 2000.

**90**



**112** A ROMAN BRONZE RING BROOCH Circa 3rd-4th century AD. Late Roman ring brooch. Pin probably repaired and not belonging. L 52 mm  
Ex European private collection, acquired on the German art market before 2000.

**40**



**113** A ROMAN BRONZE ENAMELLED BROOCH Circa 2nd century AD. Bow brooch with trapezoid foot; richly embellished with enamel. Remains of tinning. With hinged pin. L 34 mm  
Ex Austrian private collection, acquired on the European art market before 2000.

**100**



**114** A LATE ROMAN BRONZE CROSSBOW BROOCH Circa 4th century AD. With arched bow and onion-shaped terminals ('Zwiebelknöpfe'). The top of the bow is decorated with an incised design, the foot features punched ring-and-dot motifs and a carved design. With hinged pin. L 69 mm  
Ex Austrian private collection, acquired on the European art market before 2000.

**80**



**115** A ROMAN BRONZE EQUAL-ENDED BROOCH WITH ENAMEL Circa 1st-2nd century AD. Richly decorated brooch with small fields inlaid with orange enamel. Hinged, pin repaired. L 32 mm  
Ex Austrian private collection, acquired on the European art market before 2000.

**90**



**116** A ROMAN BRONZE SWASTIKA BROOCH WITH HORSE HEADS Circa 2nd-3rd century AD. Brooch with hinged pin and high catch plate. Pin probably repaired. Diameter 36 mm  
Ex Austrian private collection, acquired on the European art market before 2000.

**100**



**117** A LATE ROMAN BRONZE CROSSBOW BROOCH Circa 4th century AD. With arched bow and onion-shaped terminals ('Zwiebelknöpfe'). The top of the bow is decorated with a punched design, the foot features punched ring-and-dot motifs and a carved design. With hinged pin. L 73 mm Ex Austrian private collection, acquired on the European art market before 2000.

**70**



**118** A ROMAN BRONZE BIRD BROOCH Circa 2nd-3rd century AD. Brooch in the form of a bird with swept back wings and fantail; decorated with a zigzag pattern (tremolo). With spring and pin. L 34 mm Ex Austrian private collection, acquired on the European art market before 2000.

**90**



**119** AN EARLY ROMAN BRONZE OPENWORK BROOCH Circa 1st century AD. Tinned bronze brooch with a central medallion set with a red glass stone. With hinged pin. Diameter 36 mm Ex Austrian private collection, acquired on the European art market before 2000.

**90**



**120** A LATE ROMAN BRONZE CROSSBOW BROOCH Circa 4th century AD. With arched bow and onion-shaped terminals ('Zwiebelknöpfe'). The top of the bow is decorated with a punched chevron pattern, the foot features punched ring-and-dot motifs and a carved design. With hinged pin. L 73 mm Ex Austrian private collection, acquired on the European art market before 2000.

**80**



**121** A ROMAN BRONZE OPENWORK GATE/TEMPLE BROOCH Circa 2nd-3rd century AD. Tinned brooch in the form of a monumental gate (tetrapylon) or temple. With spring and pin; working pin probably reattached. Somewhat pitted and a scratch across the front face. H 35 mm Ex Austrian private collection, acquired on the European art market before 2000.

**100**



**122** A LARGE ROMAN BRONZE OPENWORK DISK BROOCH Circa 2nd-3rd century AD. With an intricate openwork pelta design (four peltae) and a notched edge. Minor remains of tinning. Hinged; pin and part of the catch plate restored. Diameter 40 mm Ex Austrian private collection, acquired on the European art market before 2000.

**100**



**123** A ROMAN BRONZE BIRD BROOCH Circa 2nd-3rd century AD. Modelled in the shape of a bird with folded wings. The body with notched decoration. Spring and pin ancient but probably not belonging. L 34 mm Ex Austrian private collection, acquired on the European art market before 2000.

**90**



**124** A ROMAN BRONZE OPENWORK DISK BROOCH Circa 2nd-3rd century AD. With an openwork design and a notched edge. Hinged, pin ancient but probably not belonging. Diameter 33 mm Ex Austrian private collection, acquired on the European art market before 2000.

**90**



**125** A ROMAN BRONZE OPENWORK DISK BROOCH Circa 2nd-3rd century AD. With an openwork leaf-shaped design (ivy leaf). Hinged, pin ancient but probably not belonging. Diameter 33 mm Ex Austrian private collection, acquired on the European art market before 2000.

**90**





**126** A LATE ROMAN BRONZE CROSSBOW BROOCH Circa 4th century AD. With arched bow and onion-shaped terminals ('Zwiebelknöpfe'). The top of the bow is decorated with a punched chevron pattern, the foot features punched ring-and-dot motifs and a carved design. With hinged pin. L 69 mm Ex Austrian private collection, acquired on the European art market before 2000.

**80**



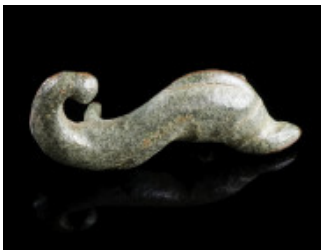
**127** A LARGE ROMAN BRONZE EQUAL-ENDED BROOCH WITH ENAMEL Circa 2nd century AD. Equal-ended brooch with lozenge-shaped body and animal head terminals; with (remains of) an elaborate enamel decoration. Hinged, pin ancient but probably not belonging. L 59 mm Ex Austrian private collection, acquired on the European art market before 2000.

**100**



**128** A LATE ROMAN BRONZE CROSSBOW BROOCH Circa 4th century AD. With arched bow and onion-shaped terminals ('Zwiebelknöpfe'). The top of the bow is decorated with a punched design, the foot features punched dot motifs and a carved design. With hinged pin. L 70 mm Ex Austrian private collection, acquired on the European art market before 2000.

**70**



**129** A ROMAN BRONZE DOLPHIN BROOCH Circa 2nd-3rd century AD. Modelled in the shape of a dolphin. Hinged, iron pin not preserved; part of the catch plate broken. Small part of the tail possibly missing? L 40 mm Ex European private collection, acquired on the German art market before 2000.

**40**



**130** A ROMAN BRONZE KNEE BROOCH Circa 2nd-3rd century AD. With faceted bow, triangular head plate, and high catch plate. With spring and pin. L 40 mm Ex European private collection, acquired on the German art market before 2000.

**40**



**131** A LATE ROMAN BRONZE CROSSBOW BROOCH Circa 4th century AD. With arched bow and onion-shaped terminals ('Zwiebelknöpfe'). The top of the bow is decorated with a punched chevron pattern, the foot features punched ring-and-dot motifs and a carved design. With hinged pin. L 55 mm Ex European private collection, acquired on the German art market before 2000.

**40**



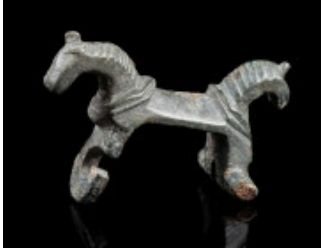
**132** A ROMAN TINNED BRONZE DOG BROOCH Circa 2nd-3rd century AD. Brooch in the shape of a dog running to right. Nearly full tinning! With spring and pin; tiny part of catch plate broken, pin somewhat bent. L 36 mm Ex Austrian private collection, acquired on the European art market before 2000.

**125**



**133** A ROMAN SILVER EARLY CROSSBOW BROOCH Circa second half of 3rd century AD. With decorated arched bow and tubular foot. One knob at the head preserved, two lateral knobs missing. Hinged pin. L 39 mm Ex Austrian private collection, acquired in the 1980s-90s.

**50**



**134** A ROMAN BRONZE DOUBLE HORSE BROOCH Circa 2nd-3rd century AD. Equal-ended brooch in the shape of a horse with a head on either side, sharing one body. The manes are indicated by deep notches. Hinged, pin missing. L 40 mm Ex Austrian private collection, acquired on the European art market before 2000.

**125**



**135** A ROMAN SILVER BOW BROOCH WITH CROSSBAR Circa 3rd century AD. Brooch with arched bow, tubular foot, and knobbed crossbar. The foot is decorated with deep notches. With hinged pin. L 55 mm Ex European private collection, acquired on the art market between circa 2000-2018.

**250**



**136** A LATE ROMAN BRONZE CROSSBOW BROOCH Circa 4th century AD. With arched bow and onion-shaped terminals ('Zwiebelknöpfe'). The top of the bow is decorated with a punched design, the foot features punched ring-and-dot motifs. With hinged pin. L 73 mm Ex Austrian private collection, acquired on the European art market before 2000.

**70**



**137** A LARGE ROMAN BRONZE TUTULUS DISK BROOCH Circa 2nd century AD. With a raised conical centre within a circular channel (with remains of an inlay?). Hinged, pin probably not belonging. Diameter 43 mm Ex Austrian private collection, acquired on the European art market before 2000.

**90**



**138** A ROMAN BRONZE OPENWORK DISK BROOCH Circa 2nd-3rd century AD. Brooch with an openwork 'swirling spiral' design. Hinged, pin probably not belonging. Diameter 34 mm Ex Austrian private collection, acquired on the European art market before 2000.

**90**



**139** A ROMAN BRONZE ANCHOR-TYPE BROOCH WITH A BIRD Circa 2nd-3rd century AD. Bow brooch with an anchor-shaped head and a separately attached, riveted bird applique. With spring and pin (probably repaired). L 38 mm Ex Austrian private collection, acquired on the European art market before 2000.

**100**



**140** A ROMAN BRONZE ENAMELLED PLATE BROOCH Circa 2nd century AD. A lozenge-shaped plate brooch, the front face decorated with fields of enamel (champlevé enamel). Hinged, pin ancient but not belonging. L 48 mm Ex Austrian private collection, acquired on the European art market before 2000.

**100**



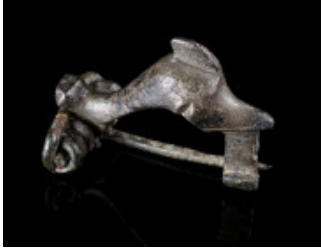
**141** A ROMAN BRONZE OPENWORK HIPPOCAMPUS BROOCH Circa 2nd-3rd century AD. Plate brooch in the shape of a stylised hippocampus, the front face decorated with punched ring-and-dot motifs. Hinged pin; attractive light green patina with minor defects. L 42 mm Ex Austrian private collection, acquired on the European art market before 2000.

**150**



**142** A ROMAN BRONZE S-SHAPED BROOCH Circa 2nd-3rd century AD. S-shaped plate brooch with stylised snake head terminals. With spring and pin; cleaned, with minor repair. L 32 mm Ex Austrian private collection, acquired on the European art market before 2000.

**90**



**143** A ROMAN BRONZE DOLPHIN KNEE BROOCH Circa 2nd-3rd century AD. Brooch in the shape of a stylised swimming dolphin. With spring and pin. L 31 mm Ex Austrian private collection, acquired on the European art market before 2000.

**100**



**144** A ROMAN BRONZE SWASTIKA BROOCH WITH HORSE HEADS Circa 2nd-3rd century AD. The eyes indicated with ring-and-dot, a further ring-and-dot motif in the centre. With hinged pin and high catch plate. Pin probably not belonging. Diameter 40 mm Ex Austrian private collection, acquired on the European art market before 2000.

**150**



**145** A ROMAN BRONZE OPENWORK PELTA BROOCH Circa 2nd-3rd century AD. Plate brooch with an openwork pelta design composed of four peltae. With hinged pin; catch plate and pin bent. Diameter 32 mm Ex Austrian private collection, acquired on the European art market before 2000.

**90**



**146** A ROMAN BRONZE EAGLE BROOCH Circa 3rd century AD. Brooch in the shape of an upright eagle with outspread wings; notched decoration on edge and body. With hinged pin. H 30 mm Ex Austrian private collection, acquired on the European art market before 2000.

**100**



**147** A ROMAN BRONZE ENAMELLED DISK BROOCH Circa 2nd century AD. Circular disk brooch with six peripheral lungs and raised centre boss. The face of the brooch is decorated with enamel in different colours. Hinged, pin not belonging. Diameter 37 mm Ex Austrian private collection, acquired on the European art market before 2000.

**150**



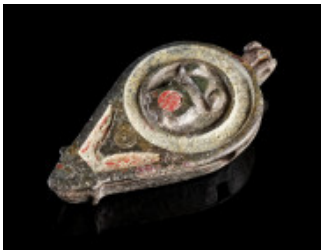
**148** A LATE ROMAN BRONZE HEAVY CROSSBOW BROOCH Circa 4th century AD. Brooch with arched bow and faceted onion-shaped terminals ('Zwiebelknöpfe'). The foot is decorated with three pairs of moulded volutes. With hinged pin. L 80 mm Ex Austrian private collection, acquired on the European art market before 2000.

**80**



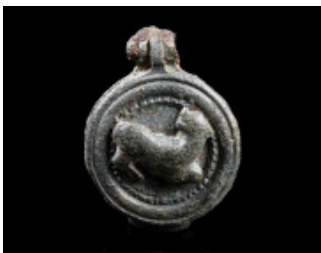
**149** AN OSTROGOTHIC BRONZE BROOCH Circa 5th-6th century AD. Brooch with semicircular head plate with five knobs and two stylised eagle heads at each side of the foot; decorated with chip carved ornament. Spring and pin missing. L 74 mm Ex European private collection, acquired on the German art market before 2000.

**100**



**150** A ROMAN BRONZE ENAMELLED SEAL BOX WITH A PHALLUS Circa 2nd century AD. Leaf-shaped seal box with base and lid of equal form and size, joined at the back of the box by a central hinge. The front face of the lid is decorated with a separately riveted zoomorphic phallus; with minor remains of enamel. One lug of the hinge partly broken; lid loose. L 38 mm Private European collection. Before, A. B. collection, UK, 1970s-early 2000s.

**150**



**151** A ROMAN BRONZE SEAL BOX WITH A HARE Circa 1st-2nd century AD. Circular seal box with separately riveted zoomorphic form (hare). Base and lid of equal form and size, joined by a hinge. Diameter 21 mm, Length 26 mm Ex Austrian private collection, acquired on the European art market before 2000.

**90**



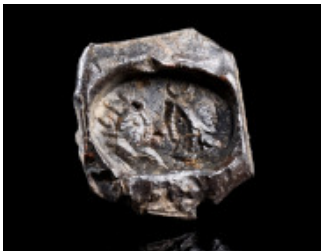
**152** A ROMAN BRONZE ENAMELLED SEAL BOX WITH MILLEFIORI Circa 2nd century AD. Leaf-shaped seal box with base and lid of equal form and size, joined by a hinge. The front face of the lid is decorated with millefiori. Hinge axe repaired. L 35 mm Ex Austrian private collection, acquired on the European art market before 2000.

**90**



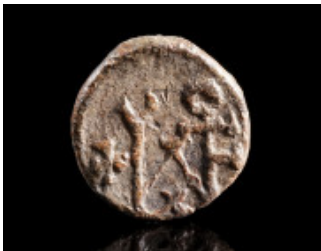
**153** TWO BYZANTINE BRONZE STAMP SEALS Circa 10th-12th century AD. Two seal matrices with suspension loop depicting a stylised bust, and a hare (?). H 22 mm, and H 16 mm Ex European private collection, acquired on the German art market before 2000.

**80**



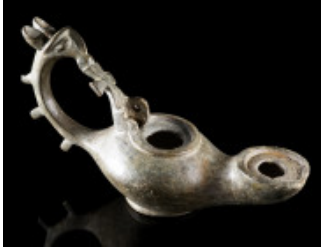
**154** A ROMAN LEAD SEAL WITH SOL AND LUNA Circa 3rd century AD. Seal with facing busts of Sol left and Luna right. L 18 mm, H 20 mm Ex European private collection, acquired on the German art market before 2000.

**30**



**155** A SMALL BYZANTINE LEAD SEAL OR TOKEN/WEIGHT Circa 6th-7th century AD. With a monogram/inscription on either side. The object features no channel for a string to go through and is probably rather a token or weight than a seal. Diameter 13 mm Ex European private collection, acquired on the German art market before 2000.

**40**



**156** A FINE BYZANTINE BRONZE OIL LAMP WITH A GRIFFIN-HEAD HANDLE Circa 5th-7th century AD. With an elongated body, tapering neck, and round nozzle. The arched handle terminates in a stylised head of a griffin; a bronze cross between the beak of the griffin and the hinge for the lid. The round base is pierced for attachment to a candelabrum. Lid missing. L 14.4 cm From the collection of an Austrian art dealer, acquired on the European art market.

**400**



**157** A FINE ROMAN BRONZE KEY Circa 1st-3rd century AD. With a head with loop and a shank with offset bit. L 32 mm From the collection of an Austrian art dealer, acquired on the European art market.

**50**



**158** A ROMAN BRONZE KEY RING Circa 1st-3rd century AD. With a projecting square openwork key bit; the rectangular bezel and the bit with notched decoration. Outer diameter 20 mm; L 17 mm From the collection of an Austrian art dealer, acquired on the European art market.

**50**



**159** A BYZANTINE BRONZE FOLDING KEY Circa 5th-6th century AD. With hollow shank and an openwork key bit; attached to a ring with notched edges. L 53 mm (total) Acquired on the UK art market before 2021. Ex old European private collection.

**50**





**160** A BYZANTINE BRONZE FOLDING KEY Circa 5th-6th century AD. With hollow shank and a pierced key bit; attached to a ring. L 49 mm (total) Acquired on the UK art market before 2021. Ex old European private collection.

**50**



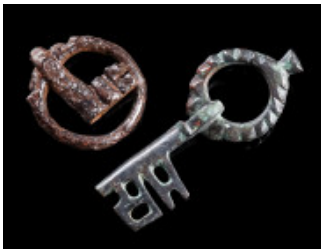
**161** A ROMAN BRONZE KEY Circa 1st-3rd century AD. With a handle with loop and a short shank with offset bit. L 55 mm Ex Austrian private collection, acquired on the European art market before 2000.

**30**



**162** TWO BYZANTINE / EARLY MEDIEVAL FOLDING KEYS Circa 5th-6th century, and probably 8th-11th century AD. A Byzantine bronze folding key, and an early Medieval (possibly Viking?) iron folding key. L 44 mm, and L 77 mm Ex European private collection, acquired on the German art market before 2000.

**50**



**163** TWO BYZANTINE FOLDING KEYS Circa 5th-6th century AD. A bronze folding key with an openwork key bit; attached to a ring with notched edges. The other, an iron folding key with offset bit; attached to a ring (does not move). L 45 mm (total); D 22 mm for the iron key/ring Ex European private collection, acquired on the German art market before 2000.

**50**



**164** TWO BYZANTINE BRONZE FOLDING KEYS Circa 5th-6th century AD. Both with an offset bit and attached to a ring. The ring of the smaller example does probably not belong. L 37 mm, and L 51 mm (total) Ex European private collection, acquired on the German art market before 2000.

**50**



**165** TWO ROMAN BRONZE KEY RINGS Circa 1st-3rd century AD. Both with a projecting key bit. Outer diameter 21 mm (both); L 15 mm, and 24 mm Ex European private collection, acquired on the German art market before 2000.

**50**



**166** TWO ROMAN BRONZE KEYS Circa 1st-4th century AD. One with a handle with loop and a short shank with offset bit; decorated with notches. The other, a Late Roman rotary key with hollow, tubular shank and circular bow. L 52 mm, and L 62 mm Ex European private collection, acquired on the German art market before 2000.

**50**



**167** A BYZANTINE BRONZE FIGURAL PADLOCK Circa 9th-12th century AD. Half a padlock in the shape of an animal; decorated with ring-and-dot motifs and notches. L 41 mm Ex European private collection, acquired on the German art market before 2000.

**50**



**168** A BYZANTINE BRONZE FIGURAL PADLOCK Circa 9th-12th century AD. Half a padlock in the shape of an ibex; decorated with ring-and-dot motifs and notches. Small part of front leg broken. L 46 mm, H 52 mm Ex European private collection, acquired on the German art market before 2000.

**50**



**169** TWO ROMAN BRONZE HASPS Circa 1st-3rd century AD. Two hasps from chest/casket locks. The hinge/loop at the top and the rectangular strap loop on the reverse reveal the function. One with moulded decoration, the other with a notched design; one lug of the hinge missing. H 59 mm, and H 88 mm Ex European private collection, acquired on the German art market before 2000.

**35**



**170** A GROUP OF FIVE ROMAN BRONZE CHEST-LOCK BOLTS Circa 1st-3rd century AD. The holes would have matched up to the teeth of a key, allowing to release the bolt and slide it. L 65-85 mm Ex European private collection, acquired on the German art market before 2000.

**50**



**171** AN EARLY MODERN IRON KEY Circa 16th-17th century AD. With a large, circular bow, a hollow, tubular shank and an offset bit with various ward-cuts. Cleaned and waxed. L 12.2 cm From the collection of an Austrian art dealer, acquired on the European art market.

**25**



**172** A BRONZE BELT BUCKLE WITH A LION Circa 9th-11th century AD. Byzantine / First Bulgarian Empire. Square plate of a belt buckle with a stylised lion striding to left; attachment lugs partly preserved at one end. L 47 mm Ex European private collection, acquired on the German art market before 2000.

**50**



**173** TWO BRONZE BELT BUCKLES WITH A GRIFFIN Circa 9th-11th century AD. Byzantine / First Bulgarian Empire. Square plates of belt buckles with a stylised griffin striding to left; attachment lugs partly preserved at one end. L 30 mm, and L 39 mm Ex European private collection, acquired on the German art market before 2000.

**50**



**174** TWO BRONZE BELT BUCKLES WITH A LION Circa 9th-11th century AD. Byzantine / First Bulgarian Empire. Square plates of belt buckles with a stylised lion striding to left; with attachment lugs and part of the frame and prong of one example preserved. L 37 mm, and L 40 mm Ex European private collection, acquired on the German art market before 2000.

**50**



**175** TWO BRONZE BELT BUCKLES WITH FIGURES Circa 9th-11th century AD. Byzantine / First Bulgarian Empire. Square plates of belt buckles with a stylised griffin striding to left, and a hunting scene (?); attachment lugs of the larger buckle preserved. L 31 mm, and L 56 mm Ex European private collection, acquired on the German art market before 2000.

**50**



**176** A GROUP OF FIVE LATE ROMAN BRONZE PROPELLOR-TYPE FITTINGS Circa 4th-5th century AD. Five decorated propellor-type belt fittings of different sizes (three with studs preserved). L 33-46 mm Ex European private collection, acquired on the German art market before 2000.

**70**



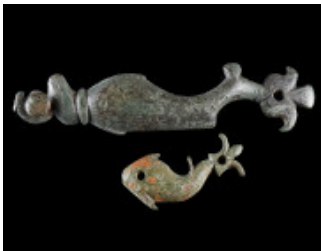
**177** A LATE ROMAN SILVER BELT BUCKLE Circa 4th century AD. Buckle with square plate with two studs for fixing to a belt. Probably from a military belt. L 36 mm From the collection of an Austrian art dealer, acquired on the European art market.

**60**



**178** A LARGE LATE ROMAN BRONZE BUCKLE PLATE FROM A MILITARY BELT Circa 4th century AD. Large belt plate, elaborately decorated with a chip carved design. Four rivet holes for fixing to the belt. L 71 mm Ex European private collection, acquired on the German art market before 2000.

**80**



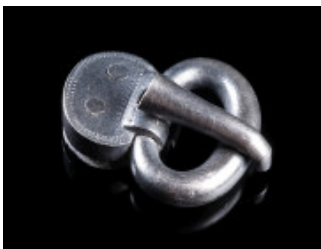
**179** TWO ROMAN BRONZE APPLIQUES IN THE SHAPE OF A DOLPHIN Circa 2nd-3rd century AD. Two finely modelled appliques in the form of a swimming dolphin. With two holes for attachment each; one stud preserved. Nose of smaller dolphin broken. L 31 mm, and L 76 mm Ex Austrian private collection, acquired on the European art market before 2000.

**50**



**180** A GROUP OF FOUR ROMAN BRONZE AMPHORA-SHAPED STRAP-ENDS Circa 4th century AD. Four late Roman strap-ends from military belts. L 29-58 mm Ex European private collection, acquired on the German art market before 2000.

**40**



**181** AN EARLY MEDIEVAL SILVER BUCKLE Circa 5th century AD. Small migration period silver buckle with oval plate decorated with a zigzag pattern (tremolo); two rivets for fixing to a strap. L 22 mm Ex European private collection, acquired on the German art market before 2000.

**30**



**182** A GROUP OF FOUR ROMAN BRONZE AMPHORA-SHAPED STRAP-ENDS Circa 4th century AD. Four late Roman strap-ends from military belts; three with rivets for fixing to the belt still in place. L 33-47 mm Ex European private collection, acquired on the German art market before 2000.

**40**



**183** AN ANCIENT BRONZE ARROW/ANCHOR SHAPED FITTING Probably Roman, circa 2nd-3rd century AD (?). Fitting with a rivet hole and a rectangular strap loop on the reverse. H 62 mm Ex European private collection, acquired on the German art market before 2000.

**40**



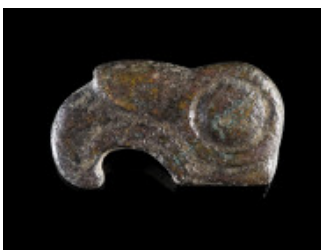
**184** A GROUP OF FOUR ROMAN BRONZE FITTINGS Circa 2nd-3rd century AD. Various forms and types; three with openwork decoration. With a patchy green patina and some corrosion. Length/Diameter 40-68 mm Ex Austrian private collection, acquired in the 1980s-90s.

**30**



**185** A SMALL MIGRATION PERIOD GILT BRONZE LION APPLIQUE Circa 6th-8th century AD. Solid cast applique with a stylised lion; two rivet holes for attachment. L 24 mm Ex Austrian private collection, acquired in the 1980s-90s.

**30**



**186** A SCYTHIAN BRONZE EAGLE HEAD FITTING Circa 7th-6th century BC. Heavy, solid cast plaque in the form of a stylised eagle head; with a strap loop on the reverse. L 49 mm Ex Austrian private collection, acquired in the 1980s-90s.

**30**



**187** A BYZANTINE BRONZE BELT BUCKLE WITH A LION Circa 6th-7th century AD. The plate decorated with an engraved lion, a star above; two lugs for fixing to the belt on the reverse. L 30 mm Ex European private collection, acquired on the German art market before 2000.

**40**



**188** A GROUP OF SEVEN ROMAN BRONZE BELT STUDS/MOUNTS Circa 2nd-3rd century AD. Various forms and types, some decorated. Diameter 12-27 mm Ex European private collection, acquired on the German art market before 2000.

**50**



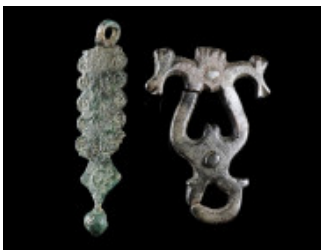
**189** A GROUP OF SEVEN ROMAN BRONZE BELT STUDS/MOUNTS Circa 2nd-3rd century AD. Various forms and types, some decorated. Diameter 14-21 mm Ex European private collection, acquired on the German art market before 2000.

**50**



**190** A GROUP OF FOUR ROMAN BRONZE BELT FITTINGS Circa 2nd-3rd century AD. Various forms and types (Romano-Celtic 'Trumpet-style', Pelta, enamelled). L 19-43 mm Ex European private collection, acquired on the German art market before 2000.

**50**



**191** TWO ROMAN BRONZE OPENWORK BELT FITTINGS Circa 1st century, and 3rd century AD. A decorated pendant from an Early Roman military horse harness, and an openwork applique with stylised horse heads. H 47 mm, and H 38 mm Ex European private collection, acquired on the German art market before 2000.

**40**



**192** A GROUP OF THREE ROMAN BRONZE MILITARY BELT BUCKLES Circa 2nd-3rd century AD. Various forms, all with a loop for attachment at the back. Two of the thorns probably not belonging. L 33-37 mm Ex European private collection, acquired on the German art market before 2000.

**40**



**193** A GROUP OF FOUR ROMAN BRONZE MILITARY BUCKLES Circa 1st-3rd century AD. Various forms and types; one buckle still attached to a long rectangular plate with two rivet holes (one rivet preserved). L 20-60 mm Ex European private collection, acquired on the German art market before 2000.

**35**



**194** A GROUP OF FOUR ROMAN / BYZANTINE BRONZE BUCKLES Circa 4th-7th century AD. Various forms and types; all with thorn and rivets/lugs preserved. L 21-45 mm Ex European private collection, acquired on the German art market before 2000.

**50**



**195** A GROUP OF SIX LATE ANTIQUE / BYZANTINE BRONZE BELT BUCKLES Circa 4th-7th century AD. Various forms and types. Studs or lugs for fixing to the belt on the reverse; all without thorn. L 23-41 mm Ex European private collection, acquired on the German art market before 2000.

**35**





**196** TWO ROMAN BRONZE FITTINGS Circa 1st century, and 2nd-3rd century AD. An early Roman part of a military belt (cingulum) for suspension of the sword (gladius) with a highly decorated disk/button, and a fragmented openwork fitting for a (military?) knife scabbard ('Thekenbeschlag'). H 56 mm, and H 54 mm Ex European private collection, acquired on the German art market before 2000.

**50**



**197** A GROUP OF SIX ROMAN BRONZE BELT/STRAP DECORATIONS Circa 2nd-3rd century AD. Various forms and types of belt/strap fittings or ornaments. Length/Height 15-38 mm Ex European private collection, acquired on the German art market before 2000.

**50**



**198** THREE LATE ANTIQUE / BYZANTINE BRONZE BELT BUCKLES Circa 5th-7th century AD. Various forms and types; all with thorn. L 25-35 mm Ex European private collection, acquired on the German art market before 2000.

**50**



**199** THREE LATE ANTIQUE / EARLY MEDIEVAL BRONZE BELT FITTINGS Circa 3rd-8th century AD. A Roman openwork applique with two stylised horse heads, a decorated Late Roman amphora-shaped strap-end, and an Avar strap-end with chip carved ornament. L 31-47 mm Ex Austrian private collection, acquired on the European art market before 2000.

**60**



**200** A GROUP OF FIVE AVAR / BYZANTINE PERIOD BRONZE BELT FITTINGS Circa 8th-11th century AD. Four decorated Byzantine-style belt appliques with two to three studs for attachment on the reverse, and one part of a decorated Avar strap-end. Length/Height 19-48 mm  
Ex European private collection, acquired on the German art market before 2000.

**40**



**201** A GROUP OF FIVE POST MEDIEVAL BRONZE BELT PARTS Circa 16th-17th century AD. Parts of hook fasteners, including two S-shaped hooks with stylised animal heads. L 24-65 mm  
Ex European private collection, acquired on the German art market before 2000.

**50**



**202** A BYZANTINE BRONZE COIN WEIGHT OF FIVE NOMISMA Circa 5th-7th century AD. Square coin weight inscribed N•E within an incised, decorative frame. L 21x21 mm; Weight 22.55 g  
From the collection of an Austrian art dealer, acquired on the European art market.

**70**



**203** A BYZANTINE BRONZE HALF OUNCE COMMERCIAL WEIGHT Circa 5th-7th century AD. Square commercial weight inscribed I•B within a punched, decorative frame. L 19 x 17 mm; Weight 13.44 g  
From the collection of an Austrian art dealer, acquired on the European art market.

**40**



**204** A GROUP OF SIX BYZANTINE BRONZE COMMERCIAL WEIGHTS Circa 5th-7th century AD. Five spherical, and an octagonal commercial weight; some with letters/symbols denoting the weight. The largest inscribed  $\boxtimes$  (three ounces). Diameter 9-26 mm; Weight 2.76-80.95 g Ex European private collection, acquired on the German art market before 2000.

**120**



**205** A ROMAN PALE BLUE-GREEN GLASS DOUBLE BALSAMARIUM Circa 2nd-3rd century AD. Double-flask balsamarium with two handles attached to the rim; the body decorated with applied spiral glass trailing (partly missing). H 12 cm From the collection of a retired antique dealer, North Devon, UK.

**380**



**206** A ROMAN PALE GREEN GLASS BALSAMARIUM Circa 1st-3rd century AD. Tall flask with elongated tubular neck; with a light iridescence. H 11.7 cm From the collection of a retired antique dealer, North Devon, UK.

**70**



**207** A FLAT ROMAN GLASS BEAD WITH MEDUSA Circa 3rd-4th century AD. Opaque dark glass (black in appearance) spacer bead with a head of Medusa in relief; moulded and pierced. H 14 mm Ex Austrian private collection, acquired on the European art market before 2000.

**70**



**208** A FINE EARLY MEDIEVAL BRONZE PATRIX DIE Circa 7th-9th century AD. Solid patrix die with an elaborate ornamental design framed by a notched edge; probably employed for the manufacture of high-end belt mounts/strap-ends made of sheet metal (presumably gold or silver). L 72 mm, 7 mm thick Private European collection. Before, A. B. collection, UK, 1970s-early 2000s.

**300**



**209** TWO ROMAN CARVED BONE HAIRPINS Circa 1st-3rd century AD. One with the head in the form of a stylised female bust with elaborate hairstyle, the other in the form of a pinecone; pointed ends probably broken and resharpened. L 74 mm, and L 107 mm Ex European private collection, acquired on the German art market before 2000.

**40**



**210** A GROUP OF FIVE ROMAN BONE HAIRPINS Circa 1st-4th century AD. With plain or profiled heads. Top of one head probably broken. L 99-137 mm Ex European private collection, acquired on the German art market before 2000.

**50**



**211** THREE FLINT FIRE STARTERS AND AN IRON FIRE STRIKER/STEEL Circa 17th-early 19th century, and 14th-17th century AD. Three flint fire starters with lead coating from flintlocks; one of the lead coatings features some sort of design or inscription (?). And a probably late medieval or early modern fire striker/steel. L 31-48 mm Ex European private collection, acquired on the German art market before 2000.

**60**



**212** A ROMAN BRONZE KNIFE HANDLE IN THE SHAPE OF AN ARM Circa 1st-3rd century AD. Knife handle in the form of a right arm and hand; the arm is worked as a decorated octagonal-section shaft for insertion of the knife blade. Small part of the thumb and terminal of the shaft missing. L 53 mm From the collection of an Austrian art dealer, acquired on the European art market.

**80**



**213** A GROUP OF THREE MEDIEVAL / EARLY MODERN BRONZE THIMBLES Circa 14th-16th century AD. All with punched dimples; two with open top. Diameter 16-20 mm Ex European private collection, acquired on the German art market before 2000.

**50**



**214** A GROUP OF THREE MEDIEVAL / EARLY MODERN BRONZE THIMBLES Circa 14th-16th century AD. All with punched dimples; two with open top. Diameter 15-21 mm Ex European private collection, acquired on the German art market before 2000.

**50**



**215** A LATE ANTIQUE / MIGRATION PERIOD SILVER HAIRPIN Circa 5th-6th century AD. Hairpin with polyhedral head decorated with notches. Pin somewhat bent. L 10.6 cm Ex Austrian private collection, acquired in the 1980s-90s.

**35**



**216** A ROMAN BRONZE DECORATED HAIRPIN Circa 1st-3rd century AD. Hairpin with profiled and pierced head. L 14 cm From the collection of an Austrian art dealer, acquired on the European art market.

**40**



**217** AN ANCIENT BRONZE DECORATED HAIRPIN Probably circa 8th-4th century BC. With an offset globular head decorated with incised concentric circles (partly worn). L 13.9 cm From the collection of an Austrian art dealer, acquired on the European art market.

**40**



**218** A ROMAN BRONZE MILITARY DIPLOMA FRAGMENT Circa 1st century AD. Fragment of a diploma issued to an unknown auxiliary soldier following twenty-five years of service, awarding to him and his family Roman citizenship. The fragment of tabella II (inside) reads: [···QVI QVINA ET VICENA STIP]ENDIA AVT [PLVRA MERVERANT ITEM D]IMISSIS H[ONESTA MISSIONE EMERITI]S STIPE[NDIIS, QVORVM NOMINA SVB]SC(R)IPTA SV[NT, IPSIS LIBERIS POSTERISQV]E EORVM [CIVITATEM DEDIT ET CONV]BIVM C[VM VXORIBVS···]. H 64 mm, W 42 mm Ex Austrian private collection, acquired on the European art market before 2000.

**300**



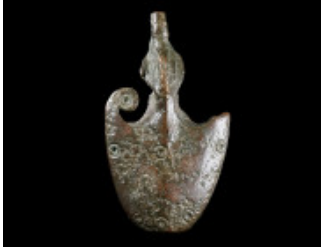
**219** A BYZANTINE BRONZE BROOCH INSCRIBED 'AMEN' Circa 5th-6th century AD. Bow brooch with folded foot (umgeschlagenem Fuß); the foot is inscribed with the word 'AMEN', framed by a notched border. Spring and pin were made of iron and are not preserved. L 53 mm Ex European private collection, acquired on the German art market before 2000.

**50**



**220** A GROUP OF FIVE BRONZE ARROWHEADS FROM THE GREEK WORLD Circa 8th-3rd century BC. Including two 'Scythian' arrowheads, that were used by different tribes and cultures. Three with socket, two with tang. L 31-54 mm Ex European private collection, acquired on the German art market before 2000.

**50**



**221** A ROMAN BRONZE SCABBARD CHAPE FROM A DAGGER/KNIFE Circa 2nd-3rd century AD. Pelta-shaped chape with a stylised dolphin; decorated with ring-and-dot motifs. Tail of dolphin broken. H 50 mm Ex European private collection, acquired on the German art market before 2000.

**60**



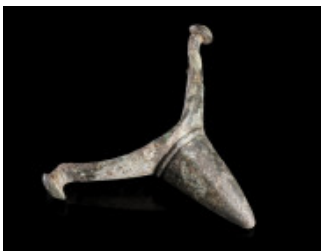
**222** TWO BRONZE HALVES OF BULLET MOULDS Circa 17th-19th century AD. Two (not matching) half-moulds for casting lead musket balls. H 27 mm, and H 31 mm Ex European private collection, acquired on the German art market before 2000.

**30**



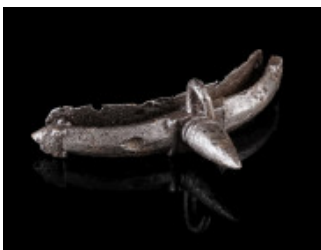
**223** TWO BRONZE HALVES OF BULLET MOULDS Circa 17th-19th century AD. Two (not matching) half-moulds for casting lead musket balls. H 26 mm, and H 28 mm Ex European private collection, acquired on the German art market before 2000.

**30**



**224** A GERMANIC BRONZE SPUR Circa 2nd-3rd century AD. Prick spur with central goad and side arms with discoid lugs. Some earthen deposits. L 50 mm, W 61 mm Private European collection. Before, A. B. collection, UK, 1970s-early 2000s.

**150**



**225** A ROMANO-GERMANIC IRON PRICK SPUR Circa 2nd-4th century AD. Spur with central goad and short, faceted side arms. W 42 mm Private European collection. Before, A. B. collection, UK, 1970s-early 2000s.

**100**



**226** A LATE ANTIQUE/EARLY MEDIEVAL BRONZE PRICK SPUR Circa 4th-7th century AD. Spur with central goad and short, faceted side arms. Lugs for attachment partly broken. With an old collector's number. W 41 mm Private European collection. Before, A. B. collection, UK, 1970s-early 2000s.

**100**



**227** AN EARLY MEDIEVAL BRONZE PRICK SPUR Circa 5th-9th century AD. Spur with central goad and long, decorated side arms. Terminals of side arms broken. L 80 mm Ex European private collection, acquired on the German art market before 2000.

**30**



**228** A LATE ANTIQUE/EARLY MEDIEVAL BRONZE PRICK SPUR Circa 5th-8th century AD. Spur with central goad and long side arms with decorated ends. Two lugs for attachment. With an old collector's number. Goad probably not belonging; one side arm cracked and repaired. L 86 mm, W 74 mm Private European collection. Before, A. B. collection, UK, 1970s-early 2000s.

**200**



**229** A MEDIEVAL IRON PRICK SPUR Circa 9th-11th century AD. Spur with central goad and long side arms. The decorated lugs with three rivets for attachment each. L 98 mm, W 92 mm Private European collection. Before, A. B. collection, UK, 1970s-early 2000s.

**150**





**230** A MEDIEVAL IRON PRICK SPUR Circa 12th-13th century AD. Spur with heavily curved side arms and an elongated, diamond-shaped goad. The arms terminating in a vertical slot for a strap on one end and a circular area with a rivet on the other. L 13.5 cm Private European collection. Before, A. B. collection, UK, 1970s-early 2000s.

**150**



**231** A MEDIEVAL IRON ROWEL SPUR Circa 14th-15th century AD. Spur with curved side arms and a seven-pointed rowel. The arms terminating in double-pierced lugs; a strap mount on either side. L 14.5 cm Private European collection. Before, A. B. collection, UK, 1970s-early 2000s.

**150**



**232** A EUROPEAN LATE BRONZE AGE SPEAR HEAD Circa 12th-9th century BC. A fine example of a socketed bronze spear head with slender leaf-shaped blade. The shaft tapers through the length of the spear head to the point. A hole on either side of the shaft for fixing. Minor casting flaw and blade slightly bent on one side. L 19.1 cm Acquired on the UK art market before 2021. Ex old European private collection.

**300**



**233** A EUROPEAN LATE BRONZE AGE SPEAR HEAD Circa 12th-9th century BC. A fine example of a socketed bronze spear head with slender leaf-shaped blade. The shaft tapers through the length of the spear head to the point. A hole on either side of the shaft for fixing. L 14.4 cm Acquired on the UK art market before 2021. Ex old European private collection.

**300**



**234** A EUROPEAN LATE BRONZE AGE SPEAR HEAD Circa 12th-9th century BC. Socketed bronze spear head with slender leaf-shaped blade. The shaft tapers through the length of the spear head to the point. The terminal of the shaft with incised decoration; a hole on either side for fixing. L 11.4 cm Acquired on the UK art market before 2021. Ex old European private collection.

**200**



**235** A EUROPEAN LATE BRONZE AGE SPEAR HEAD Circa 12th-9th century BC. Socketed bronze spear head with slender leaf-shaped blade. The shaft tapers through the length of the spear head to the point; a hole on either side for fixing. L 97 mm Acquired on the UK art market before 2021. Ex old European private collection.

**200**



**236** A LARGE NORTHERN EUROPEAN NEOLITHIC STONE AXE HEAD Circa 4500-2500 BC. Polished flint axe head. Trapezoid outline with curved blade and narrow end. Surface and cutting edge chipped. With old, inked label. L 14.7 cm Found in Hamdorf, Schleswig-Holstein. Ex Hübner collection, Bad Segeberg acquired before 1910.

**150**



**237** AN EARLY BRONZE AGE SHAFT-HOLE AXE HEAD Circa 2200-1600 BC. A solid cast copper alloy axe head ('Schaftlochaxt'). L 16 cm Ex European private collection, acquired on the German art market before 2000.

**150**



**238** A LARGE EUROPEAN LATE BRONZE AGE SOCKETED AXE HEAD Circa 1000-800 BC. Socketed bronze axe head with moulded collar and ribbed decoration. Pierced on the sides for fixing. Somewhat damaged in antiquity. L 15 cm Acquired on the UK art market before 2021. Ex old European private collection.

**250**



**239** A EUROPEAN MIDDLE BRONZE AGE PALSTAVE AXE HEAD Circa 1400-1200 BC. Bronze Palstave axe head ('Absatzbeil') with raised flanges. The body of the axe is narrow and slightly expands towards the blade. Worn; some deposits and damage to patina. L 11.4 cm Private European collection. Before, A. B. collection, UK, 1970s-early 2000s.

**200**



**240** A EUROPEAN LATE BRONZE AGE SOCKETED AXE HEAD Circa 1000-800 BC. Socketed and looped bronze axe head with triple-banded collar. L 80 mm From the collection of an Austrian art dealer, acquired on the European art market.

**190**



**241** A EUROPEAN LATE BRONZE AGE SOCKETED AXE HEAD Circa 1000-800 BC. Socketed bronze axe head with moulded collar and ribbed decoration. Pierced on the sides for fixing. L 11.3 cm Private European collection. Before, A. B. collection, UK, 1970s-early 2000s.

**200**



**242** A LARGE EUROPEAN LATE BRONZE AGE SOCKETED AXE HEAD Circa 1000-800 BC. Socketed bronze axe head with moulded collar and ribbed decoration. Pierced for fixing. Somewhat worn and damaged in antiquity; some deposits. L 15 cm Private European collection. Before, A. B. collection, UK, 1970s-early 2000s.

**200**



**243** A EUROPEAN LATE BRONZE AGE SOCKETED AXE HEAD Circa 1000-800 BC. Socketed and looped bronze axe head with double-banded collar. L 95 mm Acquired on the UK art market before 2021. Ex old European private collection.

**220**



**244** A LARGE EUROPEAN LATE BRONZE AGE SOCKETED AXE HEAD Circa 1000-800 BC. Socketed bronze axe head with moulded collar and ribbed decoration. Pierced for fixing. L 13.2 cm Private European collection. Before, A. B. collection, UK, 1970s-early 2000s.

**200**



**245** A EUROPEAN LATE BRONZE AGE SOCKETED AXE HEAD Circa 1000-800 BC. Socketed and looped bronze axe head with moulded collar and ribbed decoration. L 11.4 cm Acquired on the UK art market before 2021. Ex old European private collection.

**235**



**246** A LARGE LATE BRONZE AGE SICKLE Circa 1000-800 BC. Bronze sickle with a raised rib to the outside of the curve and a ribbed handle. With one flat face. L 20.5 cm (max.) From the collection of an Austrian art dealer, acquired on the European art market.

**150**



**247** A LATE BRONZE AGE SICKLE Circa 1000-800 BC. Bronze sickle with a raised rib to the outside of the curve and a decorated handle. With one flat face. L 16.2 cm (max.) Acquired on the UK art market before 2021. Ex old European private collection.

**135**



**248** A EUROPEAN LATE BRONZE AGE TWISTED TORQUE Circa 10th-8th century BC. Twisted hoop of solid bronze, the plain tapering ends with flattened, coiled terminals. One repaired break. Diameter 14.3 cm Ex Austrian private collection Hofrat Dr. A. O., 1920-1994.

**80**



**249** A EUROPEAN LATE BRONZE AGE KNIFE Circa 1000-800 BC. Bronze knife with curved blade and tang. Cutting edge of blade slightly chipped. L 16 cm Acquired on the UK art market before 2021. Ex old European private collection.

**50**



**250** A SMALL EUROPEAN LATE BRONZE AGE DECORATED BRACELET Circa 1000-800 BC. Bronze bracelet with tapered ends; incised decoration. Diameter 58 mm Acquired on the UK art market before 2021. Ex old European private collection.

**50**



**251** A SMALL EUROPEAN LATE BRONZE AGE BRACELET Circa 1000-800 BC. Bronze bracelet with a beautiful green patina. A few spots with corrosion. Diameter 49 mm Acquired on the UK art market before 2021. Ex old European private collection.

**50**



**252** A EUROPEAN LATE BRONZE AGE SPIRAL Circa 1200-800 BC. Made from bronze wire doubled up and bent into a spiral. Diameter 35 mm Acquired on the UK art market before 2021. Ex old European private collection.

**50**



**253** A EUROPEAN LATE BRONZE AGE SPIRAL RING Circa 1200-800 BC. Bronze spiral ring with a single spiral terminal. Diameter 24 mm, Height 36 mm Acquired on the UK art market before 2021. Ex old European private collection.

**50**



**254** TWO EUROPEAN LATE BRONZE AGE SPIRALS Circa 1200-800 BC. Two small bronze spirals; probably hair spirals. Diameter 19 mm, and 21 mm Acquired on the UK art market before 2021. Ex old European private collection.

**40**



**255** A EUROPEAN LATE BRONZE AGE DOUBLE SPIRAL PENDANT Circa 1200-800 BC. Composed of two bronze spirals connected by a loop. L 48 mm, H 30 mm Acquired on the UK art market before 2021. Ex old European private collection.

**60**



**256** A EUROPEAN LATE BRONZE AGE TWISTED SPIRAL RING Circa 1000-800 BC. Bronze spiral ring composed of twisted wire. With an area of deposits; one end slightly damaged. Diameter 25 mm Acquired on the UK art market before 2021. Ex old European private collection.

**50**



**257** A EUROPEAN LATE BRONZE AGE CONICAL SPIRAL Circa 1200-800 BC. Conical bronze spiral; possibly a hair spiral. Diameter 29 mm (max.), H 26 mm Acquired on the UK art market before 2021. Ex old European private collection.

**40**



**258** A EUROPEAN LATE BRONZE AGE SPIRAL ARMBAND Circa 1200-800 BC. Bronze spiral with tapered ends; a small crack at one spot. Diameter 47 mm Acquired on the UK art market before 2021. Ex old European private collection.

**50**



**259** A EUROPEAN LATE BRONZE AGE SPIRAL ARMBAND Circa 1200-800 BC. Bronze spiral with a raised central ridge; slightly chipped at a few spots. Diameter 59 mm, H 34 mm Acquired on the UK art market before 2021. Ex old European private collection.

**100**



**260** A EUROPEAN LATE BRONZE AGE BRACELET Circa 1000-800 BC. Bronze bracelet with tapered ends; some deposits. Diameter 90 mm Acquired on the UK art market before 2021. Ex old European private collection.

**50**



**261** A EUROPEAN LATE BRONZE AGE TWISTED BRACELET Circa 1000-800 BC. Twisted bronze bracelet with tapered ends. Worn; some deposits and minor corrosion. Diameter 76 mm Acquired on the UK art market before 2021. Ex old European private collection.

**50**



**262** A EUROPEAN LATE BRONZE AGE TWISTED BRACELET Circa 1000-800 BC. Bronze bracelet formed of twisted bronze wire. Diameter 85 mm Acquired on the UK art market before 2021. Ex old European private collection.

**50**



**263** A EUROPEAN LATE BRONZE AGE DECORATED NECKLACE Circa 1000-800 BC. Bronze necklace with thickened ends; decorated with groups of incised lines. Diameter 14.2 cm Acquired on the UK art market before 2021. Ex old European private collection.

**100**



**264** TWO CELTIC BRONZE OBJECTS Circa 3rd-1st century BC. A knobbed ring, and a fitting with triskele decoration and two lugs for attachment. Diameter 29 mm, and 22 mm Ex European private collection, acquired on the German art market before 2000.

**50**



**265** A GROUP OF THREE CELTIC BRONZE OBJECTS Circa 3rd-1st century BC. Two knobbed rings, and a fitting with three knobs. Diameter 17-19 mm Ex European private collection, acquired on the German art market before 2000.

**50**



**266** AN EGYPTIAN BRONZE SEAL WITH HIEROGLYPHIC INSCRIPTION Circa 1st millennium BC. Long oval, inscribed seal; pierced at the back. L 29 mm From the collection of an Austrian art dealer, acquired on the European art market.

**100**



**267** A GROUP OF THREE ANCIENT OBJECTS Circa 1st-2nd century, and 15th-16th century AD. A Celto-Roman lead axe pendant, a Roman bronze phallic amulet, and a small medieval (?) bronze key. L 17-36 mm Ex European private collection, acquired on the German art market before 2000.

**40**





**268** TWO MEDIEVAL OBJECTS Circa 6th-8th century, and 14th-15th century AD. An early medieval iron trilobate arrowhead, and a medieval bronze buckle with incised decoration. L 70 mm, and L 68 mm Ex European private collection, acquired on the German art market before 2000.

**40**



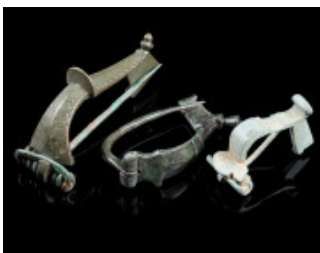
**269** A GROUP OF THREE IRON AGE BRONZE OBJECTS Circa 7th-1st century BC. A fragmented geometric pendant, a pendant with broken suspension loop, and a fragmented buckle from the Celtic period. L 39-63 mm Ex European private collection, acquired on the German art market before 2000.

**30**



**270** A GROUP OF THREE ROMANO-CELTIC SILVER RINGS Circa 1st century AD. With overlapping ends secured with two spiral twists. Somewhat bent/damaged and worn. Diameter 20-38 mm Ex European private collection, acquired on the German art market before 2000.

**50**



**271** A GROUP OF THREE ROMAN BRONZE BROOCHES Circa 2nd-3rd century AD. A bow brooch with hinged pin, a knee brooch, and a strongly profiled brooch, both with spring and pin. L 34-60 mm Ex European private collection, acquired on the German art market before 2000.

**50**



**272** A GROUP OF THREE EARLY ROMAN BRONZE BROOCHES Circa 1st century AD. Various forms, minor remains of tinning. All hinged, one pin missing. Length/Diameter 22-32 mm Ex European private collection, acquired on the German art market before 2000.

**40**



**273** TWO EARLY ROMAN BRONZE BROOCHES Circa 1st century AD. A star-shaped brooch, and a crescent shaped brooch, both tinned. Hinged, one pin partly missing. Length/Diameter 28 mm, and 32 mm Ex European private collection, acquired on the German art market before 2000.

**45**



**274** A GROUP OF THREE ROMAN BRONZE KNEE BROOCHES Circa 2nd-3rd century AD. Various forms. Two with hinged pin, one with spring and pin. L 34-42 mm Ex European private collection, acquired on the German art market before 2000.

**60**



**275** TWO ROMAN BRONZE BROOCHES Circa 2nd-3rd century AD. Two bow brooches with hinged pin. L 44 mm (each) Ex European private collection, acquired on the German art market before 2000.

**40**



**276** A GROUP OF FIVE EARLY ROMAN BRONZE BROOCHES Circa 1st century AD. Various forms, one with remains of tinning. All hinged, two pins missing. L 31-44 mm Ex European private collection, acquired on the German art market before 2000.

**50**



**277** A GROUP OF THREE ROMAN BRONZE BROOCHES Circa 2nd-3rd century AD. A strongly profiled brooch with spring and pin, and two bow brooches with hinged pin. L 41-54 mm Ex European private collection, acquired on the German art market before 2000.

**50**



**278** A GROUP OF FOUR ROMAN BRONZE BROOCHES Circa 1st-2nd century AD. A wolf headed bow brooch with hinged pin, and three bow brooches with spring and pin. L 39-81 mm Ex European private collection, acquired on the German art market before 2000.

**50**



**279** A GROUP OF THREE ROMAN BRONZE KNEE BROOCHES Circa 2nd-3rd century AD. Various forms, all hinged. One with pin. L 30-45 mm Ex Austrian private collection, acquired in the 1980s-90s.

**30**



**280** A GROUP OF SIX BYZANTINE BRONZE BROOCHES WITH BENT FOOT Circa 6th-7th century AD. Cast bow brooches with folded foot (umgeschlagenem Fuß), mostly with incised or punched decoration. Iron springs partly missing, all without pin. L 38-65 mm Ex European private collection, acquired on the German art market before 2000.

**50**



**281** A GROUP OF SIX ROMAN BRONZE BROOCHES Circa 2nd-3rd century AD. Five hinged bow brooches without pins; and a knee brooch, spring and pin not preserved. L 33-58 mm Ex European private collection, acquired on the German art market before 2000.

**30**



**282** TWO ROMAN BRONZE PLATE BROOCHES Circa 2nd-3rd century AD. Two openwork plate brooches. One hinged, without pin; the other originally with spring and pin (not preserved). Diameter 31-32 mm Ex Austrian private collection, acquired in the 1980s-90s.

**30**



**283** A GROUP OF THREE ROMAN BRONZE ANCHOR-TYPE BROOCHES Circa 2nd-3rd century AD. Bow brooches with an anchor-shaped head. Two hinged (one without pin), and one with spring and pin. L 40-53 mm Ex European private collection, acquired on the German art market before 2000.

**60**



**284** TWO ROMAN BRONZE BROOCHES Circa 2nd-3rd century AD. A strongly profiled brooch with spring and pin (spring slightly bent), and a bow brooch with hinged pin. L 52 mm, and L 45 mm Ex European private collection, acquired on the German art market before 2000.

**40**



**285** A GROUP OF THREE ROMAN BRONZE BROOCHES Circa 1st-3rd century AD. An Aucissa-type brooch, a wolf headed bow brooch, and a brooch with double bow, all with hinged pin. L 50-56 mm Ex European private collection, acquired on the German art market before 2000.

**50**



**286** A GROUP OF THREE ROMAN BRONZE BROOCHES Circa 1st-2nd century AD. A small, tinned bow brooch, a tinned disk brooch, and a tinned equal-ended brooch with enamel and niello decoration. All with hinged pin. One lug of the hinge of the equal-ended brooch broken; pin loose and probably not belonging. Length/Diameter 28-42 mm Ex Austrian private collection, acquired on the European art market before 2000.

**60**



**287** TWO ANCIENT BRONZE BROOCHES WITH BENT FOOT Circa 3rd-4th century, and 6th-7th century AD. A plain brooch with folded foot (umgeschlagenem Fuß), probably Germanic/Late Roman period, and a cast Byzantine brooch with punched and incised decoration; both with (iron) spring and pin. L 55-56 mm Ex European private collection, acquired on the German art market before 2000.

**50**



**288** A GROUP OF THREE ROMAN BRONZE KNEE BROOCHES Circa 2nd-3rd century AD. Various forms, all hinged. One with pin. L 32-44 mm Ex Austrian private collection, acquired in the 1980s-90s.

**30**



**289** A GROUP OF THREE LATE ROMAN BRONZE CROSSBOW BROOCHES Circa late 3rd-4th century AD. Various forms and decoration, all hinged. One pin not preserved, another bent. L 62-73 mm Ex Austrian private collection, acquired in the 1980s-90s.

**45**



**290** A ROMAN BRONZE HORSE BROOCH Circa 3rd century AD. Brooch in the shape of a stylised horse; incised decoration. With spring and pin. L 42 mm Ex European private collection, acquired on the German art market before 2000.

**60**



**291** A VIKING TWISTED BRONZE WIRE TORQUE Circa 9th-11th century AD. Northern Europe. Twisted torque with loop terminals, composed of bronze wires that were wrapped together to form a rounded spiral. Diameter 19.5 cm Ex Austrian private collection, acquired in the 1980s-90s.

**100**