



# Savoca Coins

## **Blue | 233rd Weekly Blue Auction**

28 September 2024

All prices are starting prices (EUR)  
PDF catalog created by [www.biddr.com](http://www.biddr.com)



**1** Eastern Europe. Imitation of Philip II of Macedon 200 BC.  
Drachm AR 14 mm, 1,74 g Very Fine

**1**



**2** Eastern Europe. Imitation of Philip II of Macedon 200 BC.  
Drachm AR 14 mm, 1,71 g Very Fine

**1**



**3** Lucania. Sybaris circa 530-510 BC. Stater AR 29 mm, 5,37 g  
Good Fine

**1**



**4** Bruttium. Hyporon circa 300 BC. Bronze Æ 18 mm, 4,09 g  
Good Fine

**1**



**5** Bruttium. The Brettii circa 211-208 BC. Bronze Æ 21 mm, 7,27  
g Good Fine

**1**



**6** Sicily. Akragas circa 440-430 BC. Cast Onkia Æ 19 mm, 4,24 g  
Good Fine

**1**



**7** Sicily. Alaisa Archonidea circa 339-317 BC. Bronze Æ 24 mm,  
17,04 g Good Fine

**1**



**8** Sicily. Alaisa Archonidea after circa 241 BC. Bronze Æ 20 mm, 5,93 g Nearly Very Fine

**1**



**9** Sicily. Gela circa 480-475 BC. Litra AR 9 mm, 0,32 g Very Fine

**1**



**10** Sicily. Himera circa 420-407 BC. Hemilitron Æ 15 mm, 2,68 g Nearly Very Fine

**1**



**11** Sicily. Syracuse. Second Democracy 466-405 BC. Tetras or Trionkion Æ 15 mm, 2,88 g Good Fine

**1**



**12** Sicily. Syracuse. Dionysios I 405-367 BC. Litra Æ 20 mm, 8,06 g Very Fine

**1**



**13** Sicily. Syracuse. Dionysios I 405-367 BC. Litra Æ 19 mm, 6,57 g Very Fine

**1**



**14** Sicily. Syracuse. Timoleon and the Third Democracy 344-317 BC. Bronze Æ 18 mm, 4,46 g Nearly Very Fine

**1**



**15** Sicily. Syracuse. Hieron II 275-215 BC. Bronze Æ 20 mm, 5,83 g Very Fine

**1**



**16** Sicily. Syracuse after circa 212 BC. Time of Roman Rule Bronze Æ 23 mm, 10,16 g Good Fine

**1**



**17** Sicily. Uncertain Punic Mint circa 400-350 BC. Bronze Æ 15 mm, 3,78 g Very Fine

**1**



**18** Islands off Sicily. Lipara circa 44-36 BC. Bronze Æ 22 mm, 4,77 g Good Fine

**1**



**19** Macedon. Akanthos circa 500-400 BC. Obol AR 10 mm, 0,40 g Very Fine

**1**



**20** Macedon. Akanthos circa 500-470 BC. Hemiobol AR 6 mm, 0,37 g Very Fine

**1**



**21** Macedon. Akanthos circa 500-470 BC. Hemiobol AR 9 mm, 0,47 g Very Fine

**1**





**22** Macedon. Amphipolis. Time of Philip V - Perseus 187-168 BC. Tetradrachm AR 13 mm, 2,26 g Very Fine

**1**



**23** Macedon. Aphytis circa 360 BC. Bronze Æ 18 mm, 5,14 g Fine

**1**



**24** Macedon. Argilos or Therma circa 510-480 BC. Tetradrachm AR 15 mm, 2,49 g Very Fine

**1**



**25** Macedon. Bottiaiai (Spartolos mint) circa 185-168 BC. Tetradrachm AR 12 mm, 1,57 g Good Fine

**1**



**26** Macedon. Chalkidian League circa 420-390 BC. Trihemidrachm AR 8 mm, 0,29 g Nearly Very Fine

**1**



**27** Macedon. Dikaia circa 500-450 BC. Tetradrachm AR 15 mm, 1,59 g Good Fine

**1**



**28** Macedon. Mende circa 480-460 BC. Tritartemorion or 3/4 Obol AR 9 mm, 0,28 g Very Fine

**1**



**29** Macedon. Mende circa 480-460 BC. Tritartemorion or 3/4 Obol AR 8 mm, 0,35 g Very Fine

**1**



**30** Macedon. Mende circa 440-423 BC. Tritartemorion or 3/4 Obol AR 6 mm, 0,28 g Nearly Very Fine

**1**



**31** Macedon. Neapolis circa 480-450 BC. Obol AR 10 mm, 0,86 g Very Fine

**1**



**32** Macedon. Pella. The Bottiaei circa 187-168 BC. Tetrobol AR 13 mm, 1,79 g Very Fine

**1**



**33** Macedon. Philippi circa 356-345 BC. Bronze Æ 17 mm, 6,41 g Good Fine

**1**



**34** Macedon. Potidaea circa 480-460 BC. Tritartemorion or 3/4 Obol AR 7 mm, 0,41 g Very Fine

**1**



**35** Macedon. Skione circa 432-348 BC. Hemiobol AR 6 mm, 0,28 g Very Fine

**1**



**36** Macedon. Terone circa 490-480 BC. Tetrobol AR 14 mm, 2,07 g Very Fine

**1**



**37** Macedon. Thermai circa 500-480 BC. Hemiobol AR 9 mm, 0,47 g Very Fine

**1**



**38** Macedon. Thessalonica circa 187-31 BC. Bronze Æ 18 mm, 5,72 g Good Fine

**1**



**39** Macedon. Thessalonica circa 100-30 BC. Bronze Æ 20 mm, 10,69 g Very Fine

**1**



**40** Macedon. Tragilos circa 400-300 BC. Bronze Æ 10 mm, 0,92 g Very Fine

**1**



**41** Kings of Macedon. Uncertain mint. Amyntas III 393-369 BC. Bronze Æ 17 mm, 3,47 g Nearly Very Fine

**1**



**42** Kings of Macedon. Uncertain mint. Amyntas III 393-369 BC. Bronze Æ 17 mm, 3,56 g Very Fine

**1**



**43** Kings of Macedon. Uncertain mint. Amyntas III 393-369 BC. Bronze Æ 15 mm, 4,11 g Very Fine

**1**



**44** Kings of Macedon. Uncertain mint. Philip II of Macedon 359-336 BC. Bronze Æ 17 mm, 5,86 g Fine

**1**



**45** Kings of Macedon. Uncertain mint. Philip II of Macedon 359-336 BC. Bronze Æ 12 mm, 1,36 g Very Fine

**1**



**46** Kings of Macedon. Uncertain mint. Philip II of Macedon 359-336 BC. Bronze Æ 23 mm, 9,06 g Very Fine

**1**



**47** Kings of Macedon. Abydos. Alexander III "the Great" 336-323 BC. Drachm AR 16 mm, 4,01 g Good Fine

**1**



**48** Kings of Macedon. Cilicia. Alexander III "the Great" 336-323 BC. Obol AR 10 mm, 0,64 g Fine

**1**



**49** Kings of Macedon. Tarsos. Alexander III "the Great" 336-323 BC. Bronze Æ 20 mm, 6,23 g Nearly Very Fine

**1**





**50** Kings of Macedon. Uncertain mint. Alexander III "the Great"  
336-323 BC. Bronze Æ 17 mm, 6,47 g Nearly Very Fine

**1**



**51** Kings of Macedon. Uncertain mint. Alexander III "the Great"  
336-323 BC. Bronze Æ 16 mm, 5,02 g Nearly Very Fine

**1**



**52** Kings of Macedon. Uncertain mint. Alexander III "the Great"  
336-323 BC. Bronze Æ 16 mm, 2,97 g Very Fine

**1**



**53** Kings of Macedon. Uncertain mint. Alexander III "the Great"  
336-323 BC. Bronze Æ 17 mm, 3,94 g Very Fine

**1**



**54** Kings of Macedon. Uncertain mint. Alexander III "the Great"  
336-323 BC. Bronze Æ 15 mm, 2,93 g Nearly Very Fine

**1**



**55** Kings of Macedon. Uncertain mint. Alexander III "the Great"  
336-323 BC. Bronze Æ 18 mm, 5,96 g Very Fine

**1**



**56** Kings of Macedon. Uncertain mint. Alexander III "the Great"  
336-323 BC. Bronze Æ 19 mm, 5,98 g Very Fine

**1**



**57** Kings of Macedon. Uncertain mint. Alexander III "the Great" 336-323 BC. Bronze Æ 19 mm, 5,59 g Very Fine

**1**



**58** Kings of Macedon. Uncertain mint. Alexander III "the Great" 336-323 BC. Bronze Æ 18 mm, 5,47 g Very Fine

**1**



**59** Kings of Macedon. Uncertain mint in Macedon. Alexander III "the Great" 336-323 BC. Bronze Æ 18 mm, 3,93 g Nearly Very Fine

**1**



**60** Kings of Macedon. Lampsakos. Philip III Arrhidaeus 323-317 BC. Drachm AR 18 mm, 4,23 g Very Fine

**1**



**61** Kings of Macedon. Uncertain mint. Kassander 306-297 BC. Bronze Æ 21 mm, 6,15 g Nearly Very Fine

**1**



**62** Kings of Macedon. Uncertain mint. Antigonos II Gonatas 277-239 BC. Bronze Æ 19 mm, 6,21 g Fine

**1**



**63** Kings of Macedon. Uncertain mint. Philip V 221-179 BC. Bronze Æ 23 mm, 9,38 g Very Fine

**1**





**64** Kings of Macedon. Uncertain mint. Philip V 221-179 BC.  
Bronze Æ 21 mm, 7,24 g Very Fine

**1**



**65** Kings of Macedon. Uncertain mint. Philip V 221-179 BC.  
Bronze Æ 24 mm, 11,42 g Nearly Very Fine

**1**



**66** Kings of Macedon. Uncertain mint. Ballaios 190-175 BC.  
Bronze Æ 18 mm, 5,46 g Very Fine

**1**



**67** Kings of Macedon. Uncertain mint. Time of Philip V - Perseus  
187-168 BC. Bronze Æ 20 mm, 7,26 g Fine

**1**



**68** Kings of Macedon. Uncertain mint in northern Greece. Time  
of Philip V - Perseus 187-168 BC. Aristokrates, magistrate Drachm  
AR 16 mm, 2,64 g Good Very Fine

**1**



**69** Kings of Macedon. Uncertain mint. Perseus 179-168 BC.  
Bronze Æ 21 mm, 8,04 g Very Fine

**1**



**70** Thrace. Abdera circa 311-280 BC. Tetrobol AR 15 mm, 1,91 g  
Fine

**1**



**71** Thrace. Byzantion circa 300-200 BC. Byzantion in alliance with Kalchedon Bronze Æ 19 mm, 5,42 g Fine

**1**



**72** Thrace. Dicaea circa 450-425 BC. Trihemiobol AR 10 mm, 0,77 g Very Fine

**1**



**73** Thrace. Dicaea circa 450-430 BC. Obol AR 9 mm, 0,44 g Fine

**1**



**74** Thrace. Maroneia circa 500-400 BC. Hemiobol AR 6 mm, 0,17 g Nearly Very Fine

**1**



**75** Thrace. Maroneia circa 398-385 BC. Triobol AR 15 mm, 1,87 g Good Fine

**1**



**76** Islands off Thrace. Samothrace circa 300-100 BC. Bronze Æ 19 mm, 4,06 g Good Very Fine

**1**



**77** Islands off Thrace. Thasos circa 525-463 BC. Fourrée Stater 20 mm, 6,29 g Very Fine

**1**



**78** Islands off Thrace. Thasos circa 435-411 BC. Hemiobol AR 10 mm, 0,38 g Very Fine

**1**



**79** Kings of Thrace. Amphipolis. Macedonian. Lysimachos 305-281 BC. Tetradrachm AR 31 mm, 17,14 g Good Extremely Fine

**1**



**80** Kings of Thrace. Sardeis. Macedonian. Lysimachos 305-281 BC. Tetradrachm AR 28 mm, 16,90 g Very Fine

**1**



**81** Kings of Thrace. Uncertain mint. Macedonian. Lysimachos 305-281 BC. Bronze Æ 19 mm, 4,13 g Very Fine

**1**



**82** Thessaly. Atrax circa 350 BC. Bronze Æ 17 mm, 3,51 g Nearly Very Fine

**1**



**83** Thessaly. Krannon circa 350-300 BC. Bronze Æ 17 mm, 4,96 g Very Fine

**1**



**84** Thessaly. Lamia circa 400-350 BC. Hemidrachm AR 17 mm, 2,70 g Very Fine

**1**



**85** Thessaly. Larissa circa 460-440 BC. Obol AR 11 mm, 0,88 g  
Very Fine

**1**



**86** Thessaly. Larissa circa 440-400 BC. Drachm AR 20 mm, 5,08 g  
Very Fine

**1**



**87** Thessaly. Larissa circa 344-337 BC. Drachm AR 18 mm, 5,58 g  
Very Fine

**1**



**88** Thessaly. Magnetes circa 171-169 BC. Hemidrachm AR 15 mm, 1,68 g  
Very Fine

**1**



**89** Thessaly. Perrhaebi circa 450-400 BC. Obol AR 12 mm, 0,52 g  
Good Fine

**1**



**90** Thessaly. Phalanna circa 400-250 BC. Bronze AE 20 mm, 6,78 g  
Nearly Very Fine

**1**



**91** Thessaly. Pharsalos circa 425-350 BC. Hemidrachm AR 15 mm, 2,43 g  
Fine

**1**



**92** Thessaly. Thessalian League circa 175-50 BC. Stater AR 22 mm, 6,40 g Good Very Fine

**1**



**93** Thessaly. Thessalian League circa 150-50 BC. Bronze Æ 18 mm, 5,05 g Very Fine

**1**



**94** Thessaly. Thessalian League circa 150-50 BC. Bronze Æ 21 mm, 4,92 g Very Fine

**1**



**95** Thessaly. Thessalian League circa 150-50 BC. Bronze Æ 19 mm, 6,39 g Very Fine

**1**



**96** Islands of Thessaly. Peparethos circa 400-300 BC. Bronze Æ 12 mm, 1,49 g Good Fine

**1**



**97** Illyria. Dyrrhachion circa 229-100 BC. Drachm AR 19 mm, 2,46 g Nearly Very Fine

**1**



**98** Epeiros. Ambrakia circa 125-75 BC. Bronze Æ 18 mm, 6,62 g Fine

**1**





**99** Epeiros. Federal coinage circa 232-168 BC. Bronze Æ 18 mm, 4,59 g Very Fine

**1**



**100** Epeiros. Koinon of Epeiros circa 232-168 BC. Drachm AR 20 mm, 4,29 g Very Fine

**1**



**101** Corcyra. Corcyra circa 510-480 BC. Obol AR 9 mm, 1,00 g Good Fine

**1**



**102** Phokis. Federal Coinage circa 449-447 BC. Triobol-Hemidrachm AR 12 mm, 2,79 g Very Fine

**1**



**103** Phokis. Federal Coinage circa 352-351 BC. Triobol AR 14 mm, 2,61 g Very Fine

**1**



**104** Boeotia. Thebes circa 405-395 BC. Tetartemorion AR 6 mm, 0,30 g Very Fine

**1**



**105** Euboea. Chalkis circa 338-308 BC. Drachm AR 16 mm, 3,48 g Very Fine

**1**





**106** Euboea. Hestiaia circa 300-100 BC. Tetrobol AR 14 mm, 2,09 g Very Fine

**1**



**107** Euboea. Karystos circa 300-250 BC. Stater AR 24 mm, 6,72 g Fine

**1**



**108** Attica. Athens circa 454-404 BC. Hemiobol AR 7 mm, 0,30 g Very Fine

**1**



**109** Attica. Athens circa 87-86 BC. Mithradatic War issue. Struck under Mithradates VI of Pontos and Ariston Bronze Æ 19 mm, 6,07 g Very Fine

**1**



**110** Attica. Athens circa 87-86 BC. Mithradatic War issue. Struck under Mithradates VI of Pontos and Ariston Bronze Æ 17 mm, 7,28 g Very Fine

**1**



**111** Megaris. Megara circa 350-275 BC. Bronze Æ 15 mm, 2,52 g Good Fine

**1**



**112** Corinthia. Corinth circa 405-345 BC. Stater AR 21 mm, 8,47 g Near Mint State; lustrous, with a sharply struck reverse

**1**



**113** Elis. Olympia circa 468 BC. Hemidrachm AR 17 mm, 2,37 g  
Fine

**1**



**114** Argolis. Argos circa 280-260 BC. Bronze Æ 17 mm, 4,11 g  
Fine

**1**



**115** Arkadia. Megalopolis circa 340-275 BC. Obol AR 12 mm,  
0,72 g Nearly Very Fine

**1**



**116** Asia Minor. Uncertain mint circa 300 BC. Bronze Æ 20 mm,  
6,32 g Fine

**1**



**117** Pontos. Amisos. Time of Mithradates VI Eupator 120-63 BC.  
Bronze Æ 23 mm, 6,93 g Fine

**1**



**118** Pontos. Amisos. Time of Mithradates VI Eupator 120-63 BC.  
Bronze Æ 22 mm, 7,56 g Very Fine

**1**



**119** Pontos. Amisos. Time of Mithradates VI Eupator circa 120-  
63 BC. Bronze Æ 23 mm, 13,14 g Very Fine

**1**



**120** Pontos. Amisos. Time of Mithradates VI Eupator circa 120-63 BC. Bronze Æ 20 mm, 7,93 g Very Fine

**1**



**121** Pontos. Amisos. Time of Mithradates VI Eupator circa 120-63 BC. Bronze Æ 21 mm, 8,34 g Extremely Fine

**1**



**122** Pontos. Komana. Time of Mithradates VI Eupator 120-63 BC. Bronze Æ 22 mm, 7,26 g Fine

**1**



**123** Paphlagonia. Sinope circa 490-425 BC. Drachm AR 17 mm, 5,95 g Very Fine, test cut

**1**



**124** Mysia. Kyzikos circa 550-450 BC. Sixth Stater or Hekte EL 10 mm, 2,66 g Very Fine

**1**



**125** Mysia. Kyzikos circa 550-500 BC. Sixth Stater or Hekte EL 10 mm, 2,62 g Very Fine

**1**



**126** Mysia. Kyzikos circa 300-200 BC. Bronze Æ 19 mm, 5,37 g Good Fine

**1**



**127** Mysia. Kyzikos circa 300-200 BC. Overstruck on an earlier issue from Kyzikos (SNG Paris 436) Bronze Æ 29 mm, 17,07 g Very Fine

**1**



**128** Mysia. Kyzikos circa 300-200 BC. Overstruck on an earlier issue from Kyzikos (SNG Paris 436) Bronze Æ 30 mm, 13,97 g Very Fine

**1**



**129** Mysia. Lampsakos circa 170-150 BC. In the name and types of Lysimachos of Thrace Tetradrachm AR 38 mm, 15,44 g Good Very Fine

**1**



**130** Mysia. Pergamon circa 200-100 BC. Bronze Æ 17 mm, 7,18 g Very Fine

**1**



**131** Troas. Hamaxitos circa 400-310 BC. Bronze Æ 21 mm, 3,75 g Good Fine, holed

**1**



**132** Aiolis. Kyme circa 320-250 BC. Bronze Æ 16 mm, 2,71 g Very Fine

**1**



**133** Aiolis. Kyme circa 320-200 BC. Bronze Æ 17 mm, 2,83 g Good Fine

**1**





**134** Aiolis. Kyme circa 320-250 BC. Bronze Æ 17 mm, 4,71 g  
Nearly Very Fine

**1**



**135** Lesbos. Methymna circa 350-240 BC. Bronze Æ 16 mm,  
3,96 g Nearly Very Fine

**1**



**136** Lesbos. Mytilene circa 521-478 BC. Sixth Stater or Hekte EL  
10 mm, 2,49 g Very Fine

**1**



**137** Lesbos. Mytilene circa 377-326 BC. Sixth Stater or Hekte EL  
10 mm, 2,51 g Nearly Very Fine

**1**



**138** Ionia. Ephesos circa 180-67 BC. Cistophoric Tetradrachm  
AR 30 mm, 12,68 g Very Fine

**1**



**139** Ionia. Ephesos circa 180-67 BC. Cistophoric Tetradrachm  
AR 27 mm, 12,77 g Very Fine

**1**



**140** Ionia. Ephesos circa 180-67 BC. Cistophoric Tetradrachm  
AR 27 mm, 12,68 g Good Very Fine

**1**



**141** Ionia. Miletos circa 525-475 BC. Tetartemorion AR 6 mm, 0,20 g Very Fine

**1**



**142** Ionia. Phokaia circa 521-478 BC. Trihemiobol AR 11 mm, 1,61 g Very Fine

**1**



**143** Caria. Kindya circa 510-480 BC. Tetrobol AR 12 mm, 1,73 g Nearly Very Fine

**1**



**144** Caria. Kindya circa 510-480 BC. Tetrobol AR 12 mm, 1,55 g Nearly Very Fine

**1**



**145** Islands off Caria. Rhodos circa 205-190 BC. Drachm AR 15 mm, 2,45 g Very Fine

**1**



**146** Satraps of Caria. Hekatomnos 392-377 BC. Hemiobol AR 7 mm, 0,47 g Good Very Fine

**1**



**147** Lydia. Tralleis circa 166-67 BC. Cistophoric Didrachm AR 20 mm, 5,39 g Very Fine

**1**





**148** Pamphylia. Side circa 370-360 BC. Stater AR 22 mm, 10,42 g Very Fine

**1**



**149** Pisidia. Isinda circa 200-0 BC. Bronze Æ 19 mm, 6,23 g Nearly Very Fine

**1**



**150** Pisidia. Selge circa 200-0 BC. Bronze Æ 12 mm, 2,21 g Nearly Very Fine

**1**



**151** Cilicia. Mallos circa 380 BC. Stater AR 21 mm, 9,32 g Good Fine

**1**



**152** Cilicia. Soloi circa 300 BC. Stater AR 20 mm, 9,45 g Good Fine

**1**



**153** Seleukid Kingdom. Antioch on the Orontes. Seleukos I Nikator 312-281 BC. Bronze Æ 21 mm, 9,17 g Nearly Very Fine

**1**



**154** Seleukid Kingdom. Seleukeia on Tigris. Antiochos I Soter 281-261 BC. Drachm AR 18 mm, 3,91 g Very Fine

**1**



**155** Seleukid Kingdom. Sardeis. Seleukos II Kallinikos 246-226 BC. Bronze Æ 17 mm, 4,39 g Very Fine

**1**



**156** Seleukid Kingdom. Antioch on the Orontes. Seleukos III Keraunos 226-223 BC. Tetradrachm AR 30 mm, 15,29 g Nearly Very Fine

**1**



**157** Seleukid Kingdom. Antioch or Sardeis. Antiochos III Megas 223-187 BC. Bronze Æ 13 mm, 2,20 g Very Fine

**1**



**158** Seleukid Kingdom. Antioch on the Orontes. Antiochos IV Epiphanes 175-164 BC. 'Egyptianizing' series Bronze Æ 27 mm, 19,92 g Fine

**1**



**159** Seleukid Kingdom. Antioch on the Orontes. Antiochos IV Epiphanes 175-164 BC. "Egyptianizing" series Bronze Æ 25 mm, 14 g Nearly Very Fine

**1**



**160** Seleukid Kingdom. Antioch on the Orontes. Antiochos VIII Epiphanes Grypos 121-97 BC. Tetradrachm AR 28 mm, 15,70 g Very Fine

**1**



**161** Seleukid Kingdom. Antioch. Antiochos VIII Epiphanes 109-96 BC. Bronze Æ 22 mm, 7,61 g Fine

**1**



**162** Seleukid Kingdom. Antioch on the Orontes. Philip I Philadelphos 95-75 BC. Tetradrachm AR 26 mm, 14,96 g Extremely Fine

**1**



**163** Seleucis and Pieria. Antioch circa 100-0 BC. Bronze Æ 21 mm, 7,70 g Fine

**1**



**164** Seleucis and Pieria. Damascus circa 100-0 BC. Bronze Æ 20 mm, 7,52 g Very Fine

**1**



**165** Phoenicia. Arados circa 420-346 BC. Obol AR 9 mm, 0,69 g Good Fine

**1**



**166** Phoenicia. Arados circa 380-350 BC. Tetrobol AR 13 mm, 3,60 g Fine

**1**



**167** Phoenicia. Sidon. Time of Baalshallim II 401-366 BC. 1/16 Shekel AR 10 mm, 0,82 g Very Fine

**1**



**168** Phoenicia. Sidon. Time of Baalshallim II 401-366 BC. 1/16 Shekel AR 10 mm, 0,63 g Nearly Very Fine

**1**



**169** Phoenicia. Sidon. Time of Baalshallim II 401-366 BC. 1/16 Shekel AR 9 mm, 0,59 g Good Very Fine

**1**



**170** Phoenicia. Sidon. Time of Baalshallim II 401-366 BC. 1/16 Shekel AR 10 mm, 0,52 g Very Fine

**1**



**171** Phoenicia. Sidon. Time of Baalshallim II 401-366 BC. 1/16 Shekel AR 10 mm, 0,64 g Nearly Very Fine

**1**



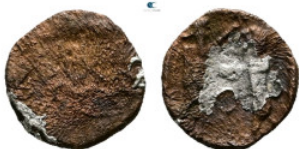
**172** Phoenicia. Sidon. Time of Baalshallim II 401-366 BC. 1/16 Shekel AR 8 mm, 0,46 g Very Fine

**1**



**173** Phoenicia. Sidon. Time of Baalshallim II 401-366 BC. 1/16 Shekel AR 8 mm, 0,69 g Very Fine

**1**



**174** Phoenicia. Sidon. Time of Baalshallim II 401-366 BC. Fourrée 1/16 Shekel 9 mm, 0,60 g Fine

**1**



**175** Phoenicia. Sidon. Time of Baalshallim II 401-366 BC. Fourrée 1/16 Shekel 9 mm, 0,48 g Fine

**1**



**176** Phoenicia. Sidon. Time of Baalshallim II 401-366 BC.  
Fourrée 1/16 Shekel 9 mm, 0,48 g Fine

**1**



**177** Arabia. Southern. Himyar. Unknown ruler(s) AD 50-100. 1/4  
Unit AR 9 mm, 0,35 g Very Fine

**1**



**178** Arabia. Southern. Himyar. Unknown ruler(s) AD 50-100. 1/4  
Unit AR 8 mm, 0,31 g Very Fine

**1**



**179** Arabia. Southern. Himyar. Unknown ruler(s) AD 50-100. 1/4  
Unit AR 8 mm, 0,22 g Very Fine

**1**



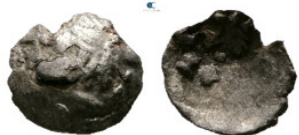
**180** Arabia. Southern. Himyar. Unknown ruler(s) AD 50-100. 1/4  
Unit AR 7 mm, 0,27 g Very Fine

**1**



**181** Arabia. Southern. Himyar. Unknown ruler(s) AD 50-100. Unit  
AR 8 mm, 0,13 g Fine

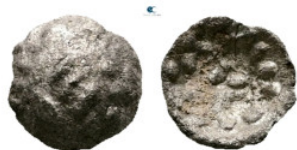
**1**



**182** Arabia. Southern. Himyar. Unknown ruler(s) AD 50-100. 1/4  
Unit AR 7 mm, 0,10 g Fine

**1**





**183** Arabia. Southern. Himyar. Unknown ruler(s) AD 50-100. 1/4  
Unit AR 7 mm, 0,09 g Good Fine

**1**



**184** Arabia. Southern. Himyar. Unknown ruler(s) AD 50-100. 1/4  
Unit AR 7 mm, 0,22 g Good Fine

**1**



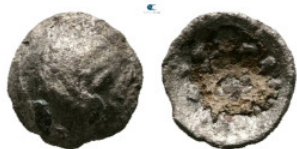
**185** Arabia. Southern. Himyar. Unknown ruler(s) AD 50-100. Unit  
AR 8 mm, 0,28 g Fine

**1**



**186** Arabia. Southern. Himyar. Unknown ruler(s) AD 50-100. 1/4  
Unit AR 7 mm, 0,14 g Fine

**1**



**187** Arabia. Southern. Himyar. Unknown ruler(s) AD 50-100. Unit  
AR 7 mm, 0,23 g Fine

**1**



**188** Arabia. Southern. Himyar. Unknown ruler(s) AD 50-100. 1/4  
Unit AR 8 mm, 0,23 g Fine

**1**



**189** Arabia. Southern. Himyar. Unknown ruler(s) AD 50-100. 1/4  
Unit AR 7 mm, 0,22 g Very Fine

**1**





**190** Arabia. Southern. Himyar. Unknown ruler(s) AD 50-100. 1/4  
Unit AR 8 mm, 0,23 g Good Fine

**1**



**191** Arabia. Southern. Himyar. Unknown ruler(s) AD 50-100. 1/4  
Unit AR 8 mm, 0,30 g Very Fine

**1**



**192** Arabia. Southern. Saba' circa 400-300 BC. Unit AR 10 mm,  
0,50 g Fine

**1**



**193** Arabia. Southern. Saba' circa 400-300 BC. Unit AR 9 mm,  
0,75 g Fine

**1**



**194** Arabia. Southern. Saba' circa 400-300 BC. Unit AR 9 mm,  
1,03 g Fine

**1**



**195** Arabia. Southern. Saba' circa 400-300 BC. Unit AR 10 mm,  
0,97 g Fine

**1**



**196** Arabia. Southern. Saba' circa 400-300 BC. Unit AR 10 mm,  
0,66 g Fine

**1**



**197** Arabia. Southern. Saba' circa 400-300 BC. Unit AR 7 mm, 0,27 g Good Fine

**1**



**198** Arabia. Southern. Saba' circa 400-300 BC. Unit AR 10 mm, 0,79 g Fine

**1**



**199** Arabia. Southern. Saba' circa 400-300 BC. Unit AR 10 mm, 0,91 g Fine

**1**



**200** Arabia. Southern. Saba' circa 400-300 BC. Unit AR 10 mm, 0,78 g Fine

**1**



**201** Nabataean Kingdom. Petra. Malichos II with Shaqilat AD 40-70. Drachm AR 15 mm, 3,40 g Very Fine

**1**



**202** Nabataean Kingdom. Petra. Aretas IV, with Shaqilat 9 BC-AD 40. Drachm AR 15 mm, 4,22 g Nearly Very Fine

**1**



**203** Nabataean Kingdom. Petra. Aretas IV, with Shaqilat 9 BC-AD 40. Drachm AR 14 mm, 4,78 g Very Fine

**1**



**204** Persia. Achaemenid Empire. Sardeis. Time of Darios I to Xerxes II 485-420 BC. Siglos AR 14 mm, 5,55 g Very Fine

**1**



**205** Persia. Achaemenid Empire. Sardeis. Time of Artaxerxes III to Darios III 350-333 BC. Siglos AR 15 mm, 5,40 g Nearly Very Fine

**1**



**206** Persia. Achaemenid Empire. Sardeis. Time of Artaxerxes III to Darios III 350-333 BC. Siglos AR 16 mm, 5,57 g Nearly Very Fine

**1**



**207** Persia. Achaemenid Empire. Sardeis. Time of Artaxerxes III to Darios III 350-333 BC. Siglos AR 17 mm, 5,45 g Fine

**1**



**208** Sasanian Kingdom. Shapur I AD 242-276. Drachm AR 26 mm, 3,95 g Very Fine

**1**



**209** Sasanian Kingdom. Shapur I AD 242-276. Drachm AR 23 mm, 3,95 g Very Fine

**1**



**210** Sasanian Kingdom. Pērōz (Fīrūz) I AD 457-484. Drachm AR 31 mm, 4,09 g Very Fine

**1**



**211** Sasanian Kingdom. Khusro I AD 531-579. Drachm AR 28 mm, 3,05 g Very Fine

**1**



**212** Sasanian Kingdom. Khusro I AD 531-579. Drachm AR 32 mm, 3,84 g Very Fine

**1**



**213** Sasanian Kingdom. Khusro I AD 531-579. Drachm AR 33 mm, 4,10 g Very Fine

**1**



**214** Sasanian Kingdom. Khusro I AD 531-579. Drachm AR 30 mm, 3,12 g Very Fine

**1**



**215** Sasanian Kingdom. Khusro II AD 591-628. Drachm AR 32 mm, 4,04 g Very Fine

**1**



**216** Sasanian Kingdom. Khusro II AD 591-628. Drachm AR 32 mm, 4,11 g Very Fine

**1**



**217** Kings of Parthia. Seleukia. Gotarzes II AD 40-51. Tetradrachm AR 26 mm, 11,71 g Very Fine

**1**



**218** Kings of Parthia. Rhagae. Sinatrukes 93-69 BC. Drachm AR 20 mm, 4,15 g Very Fine

**1**



**219** Kings of Parthia. Ekbatana. Mithradates III 87-80 BC. Drachm AR 20 mm, 3,81 g Very Fine

**1**



**220** Kings of Armenia. Tigranocerta. Tigranes II "the Great" 95-56 BC. Tetradrachm AR 27 mm, 15,59 g Good Very Fine

**1**



**221** Kings of Elymais. Orodes III AD 100-200. Bronze Æ 14 mm, 3,11 g Good Fine

**1**



**222** Kings of Elymais. Orodes III AD 100-200. Bronze Æ 15 mm, 2,93 g Nearly Very Fine

**1**



**223** Kings of Elymais. Orodes III AD 100-200. Bronze Æ 14 mm, 3,51 g Good Fine

**1**



**224** Kings of Elymais. Orodes III AD 100-200. Bronze Æ 15 mm, 3,12 g Nearly Very Fine

**1**





**225** Kings of Elymais. Orodes III AD 100-200. Bronze Æ 16 mm, 3,52 g Nearly Very Fine

**1**



**226** Kings of Elymais. Orodes III AD 100-200. Bronze Æ 14 mm, 2,7 g Very Fine

**1**



**227** Kings of Elymais. Orodes III AD 100-200. Bronze Æ 17 mm, 3,95 g Nearly Very Fine

**1**



**228** Kings of Elymais. Orodes III AD 100-200. Bronze Æ 16 mm, 3,86 g Good Fine

**1**



**229** Kings of Elymais. Phraates AD 100-150. Bronze Æ 15 mm, 3,72 g Nearly Very Fine

**1**



**230** Ptolemaic Kingdom of Egypt. Alexandria. Ptolemy I Soter 305-282 BC. Tetradrachm AR 26 mm, 13,88 g Very Fine

**1**



**231** Ptolemaic Kingdom of Egypt. Alexandria. Ptolemy II Philadelphos 285-246 BC. Bronze Æ 26 mm, 13,03 g Good Fine

**1**



**232** Ptolemaic Kingdom of Egypt. Alexandria. Ptolemy II Philadelphos 285-246 BC. Bronze Æ 30 mm, 18,88 g Good Fine **1**



**233** Ptolemaic Kingdom of Egypt. Alexandria. Ptolemy II Philadelphos 285-246 BC. Bronze Æ 21 mm, 8,84 g Very Fine **1**



**234** Ptolemaic Kingdom of Egypt. Uncertain mint. Ptolemy II Philadelphos 285-246 BC. Bronze Æ 15 mm, 3,01 g Very Fine **1**



**235** Ptolemaic Kingdom of Egypt. Uncertain mint. Ptolemy II Philadelphos 285-246 BC. Bronze Æ 14 mm, 1,57 g Good Fine **1**



**236** Ptolemaic Kingdom of Egypt. Kaunos (?). Ptolemy III Euergetes 246-221 BC. Bronze Æ 14 mm, 1,75 g Very Fine **1**



**237** Ptolemaic Kingdom of Egypt. Alexandria. Ptolemy IV Philopator 222-204 BC. Bronze Æ 39 mm, 44,06 g Nearly Very Fine **1**



**238** Ptolemaic Kingdom of Egypt. Alexandria. Ptolemy IV Philopator 222-204 BC. Bronze Æ 20 mm, 4,48 g Good Fine **1**



**239** Ptolemaic Kingdom of Egypt. Alexandria. Ptolemy V Epiphanes 204-180 BC. Bronze Æ 15 mm, 2,42 g Nearly Very Fine **1**



**240** Ptolemaic Kingdom of Egypt. Alexandria. Ptolemy VI Philometor 180-145 BC. Bronze Æ 19 mm, 7,85 g Fine **1**



**241** Ptolemaic Kingdom of Egypt. Alexandria. Ptolemy IX to Ptolemy XII 116-51 BC. Bronze Æ 31 mm, 22,58 g Nearly Very Fine **1**



**242** Ptolemaic Kingdom of Egypt. Alexandria. Ptolemy IX to Ptolemy XII 116-51 BC. Bronze Æ 29 mm, 23,39 g Nearly Very Fine **1**



**243** Ptolemaic Kingdom of Egypt. Alexandria. Ptolemy IX to Ptolemy XII 116-51 BC. Bronze Æ 19 mm, 8,54 g Very Fine **1**



**244** Ptolemaic Kingdom of Egypt. Alexandria. Ptolemy IX to Ptolemy XII 116-51 BC. Bronze Æ 20 mm, 7,79 g Very Fine **1**



**245** Ptolemaic Kingdom of Egypt. Alexandria. Ptolemy IX to Ptolemy XII 116-51 BC. Bronze Æ 20 mm, 7,53 g Very Fine **1**



**246** Ptolemaic Kingdom of Egypt. Alexandria. Ptolemy IX to Ptolemy XII 116-51 BC. Bronze Æ 20 mm, 8,89 g Good Very Fine

**1**



**247** Zeugitana. Carthage circa 300-264 BC. Bronze Æ 20 mm, 4,76 g Very Fine

**1**



**248** Zeugitana. Carthage circa 300 BC. Bronze Æ 22 mm, 5,44 g Very Fine

**1**



**249** Central Asian. India. Gupta Empire. Kumara Gupta circa AD 415-450. Drachm AR 15 mm, 2,11 g Very Fine

**1**



**250** Macedon. Amphipolis. Augustus 27 BC-AD 14. Bronze Æ 22 mm, 8,66 g Fine

**1**



**251** Macedon. Amphipolis. Time of Augustus 27 BC-AD 14. Bronze Æ 23 mm, 11,55 g Nearly Very Fine

**1**



**252** Macedon. Amphipolis. Claudius AD 41-54. Bronze Æ 22 mm, 7,72 g Nearly Very Fine

**1**





**253** Macedon. Amphipolis. Domitian AD 81-96. Bronze Æ 20 mm, 6,26 g Very Fine

**1**



**254** Macedon. Amphipolis. Elagabal AD 218-222. Bronze Æ 22 mm, 5,22 g Very Fine

**1**



**255** Macedon. Amphipolis. Julia Mamaea. Augusta AD 225-235. Bronze Æ 20 mm, 5,85 g Nearly Very Fine

**1**



**256** Macedon. Cassandreia. Claudius AD 41-54. Bronze Æ 22 mm, 8,75 g Good Fine

**1**



**257** Macedon. Edessa. Augustus 27 BC-AD 14. Bronze Æ 22 mm, 9,47 g Good Fine

**1**



**258** Macedon. Edessa. Tiberius AD 14-37. Bronze Æ 22 mm, 6,98 g Good Fine

**1**



**259** Macedon. Koinon of Macedon. Nero AD 54-68. Bronze Æ 25 mm, 7,99 g Nearly Very Fine

**1**





**260** Macedon. Koinon of Macedon. Vespasian AD 69-79. Bronze Æ 26 mm, 6,96 g Nearly Very Fine

**1**



**261** Macedon. Koinon of Macedon. Antoninus Pius AD 138-161. Bronze Æ 23 mm, 15,09 g Fine

**1**



**262** Macedon. Koinon of Macedon. Pseudo-autonomous issue AD 222-235. Bronze Æ 24 mm, 8,45 g Very Fine

**1**



**263** Macedon. Pella. Philip II AD 247-249. Bronze Æ 25 mm, 8,85 g Nearly Very Fine

**1**



**264** Macedon. Stobi. Vespasian AD 69-79. Bronze Æ 26 mm, 8,08 g Good Fine

**1**



**265** Macedon. Stobi. Caracalla as Caesar AD 196-198. Bronze Æ 24 mm, 6,40 g Very Fine

**1**



**266** Macedon. Thessalonica. Marc Antony and Octavian 37 BC. Bronze Æ 21 mm, 9,56 g Nearly Very Fine

**1**



**267** Macedon. Thessalonica. Marc Antony and Octavian 37 BC.  
Bronze Æ 20 mm, 6,33 g Fine

**1**



**268** Macedon. Thessalonica. Marcus Aurelius AD 161-180.  
Bronze Æ 26 mm, 15,13 g Good Fine

**1**



**269** Macedon. Thessalonica. Marcus Aurelius AD 161-180.  
Bronze Æ 29 mm, 11,59 g Very Fine

**1**



**270** Macedon. Thessalonica. Septimius Severus AD 193-211.  
Bronze Æ 26 mm, 10,78 g Very Fine

**1**



**271** Macedon. Thessalonica. Severus Alexander AD 222-235.  
Bronze Æ 26 mm, 9,39 g Good Fine

**1**



**272** Macedon. Thessalonica. Gordian III AD 238-244. Bronze Æ  
25 mm, 10,67 g Very Fine

**1**



**273** Thrace. Abdera. Antoninus Pius AD 138-161. Bronze Æ 21  
mm, 4,11 g Nearly Very Fine

**1**



**274** Thrace. Anchialos. Septimius Severus AD 193-211. Bronze Æ 26 mm, 9,84 g Fine

**1**



**275** Thrace. Bizya. Philip I Arab AD 244-249. Bronze Æ 26 mm, 8,24 g Nearly Very Fine

**1**



**276** Thrace. Byzantion. Geta AD 198-211. Bronze Æ 28 mm, 12,59 g Nearly Very Fine

**1**



**277** Thrace. Deultum. Macrinus AD 217-218. Bronze Æ 22 mm, 7,94 g Good Fine

**1**



**278** Thrace. Hadrianopolis. Faustina II AD 147-175. Bronze Æ 21 mm, 6,48 g Very Fine

**1**



**279** Thrace. Philippopolis. Antoninus Pius AD 138-161. Bronze Æ 25 mm, 9,43 g Fine

**1**



**280** Thrace. Philippopolis. Marcus Aurelius AD 161-180. Bronze Æ 23 mm, 3,86 g Good Fine

**1**



**281** Thrace. Plotinopolis. Faustina II AD 147-175. Bronze Æ 22 mm, 6,79 g Good Fine

**1**



**282** Moesia Superior. Viminacium. Trajan Decius AD 249-251. Bronze Æ 30 mm, 15,12 g Nearly Very Fine

**1**



**283** Moesia Superior. Viminacium. Volusian AD 251-253. Bronze Æ 26 mm, 10,57 g Good Fine

**1**



**284** Moesia Inferior. Marcianopolis. Elagabal AD 218-222. Bronze Æ 19 mm, 3,70 g Very Fine

**1**



**285** Moesia Inferior. Marcianopolis. Elagabal AD 218-222. Julius Antonius Seleucus, legatus consularis Bronze Æ 26 mm, 9,76 g Very Fine

**1**



**286** Moesia Inferior. Marcianopolis. Elagabalus and Julia Maesa AD 218-222. Bronze Æ 27 mm, 9,94 g Nearly Very Fine

**1**



**287** Moesia Inferior. Marcianopolis. Severus Alexander, with Julia Maesa AD 222-235. Bronze Æ 26 mm, 9,84 g Fine

**1**





**288** Moesia Inferior. Nikopolis ad Istrum. Gordian III AD 238-244. Bronze Æ 29 mm, 14,32 g Very Fine

**1**



**289** Moesia Inferior. Odessos. Gordian III AD 238-244. Bronze Æ 36 mm, 24,05 g Very Fine

**1**



**290** Moesia Inferior. Tomis. Pseudo-autonomous issue AD 138-161. Bronze Æ 18 mm, 2,91 g Very Fine

**1**



**291** Dacia. Herennia Etruscilla AD 249-251. Bronze Æ 27 mm, 14,47 g Very Fine

**1**



**292** Corinthia. Corinth. Augustus 27 BC-AD 14. Bronze Æ 21 mm, 6,89 g Very Fine

**1**



**293** Kings of Bosphoros. Thothorses with uncertain emperor AD 285-308. Stater Æ 21 mm, 8,68 g Fine

**1**



**294** Pontos. Komana. Time of Mithradates VI Eupator circa 120-63 BC. Bronze Æ 21 mm, 7,32 g Very Fine

**1**





**295** Pontos. Neocaesarea. Valerian I AD 253-260. Bronze Æ 26 mm, 14,62 g Very Fine

**1**



**296** Bithynia. Nikaia. Caracalla AD 198-217. Bronze Æ 16 mm, 2,30 g Very Fine

**1**



**297** Bithynia. Nikaia. Caracalla AD 198-217. Bronze Æ 27 mm, 11,87 g Nearly Very Fine

**1**



**298** Bithynia. Nikaia. Severus Alexander AD 222-235. Bronze Æ 20 mm, 3,92 g Nearly Very Fine

**1**



**299** Bithynia. Nikaia. Severus Alexander AD 222-235. Bronze Æ 23 mm, 4,83 g Very Fine

**1**



**300** Bithynia. Nikaia. Trebonianus Gallus AD 251-253. Bronze Æ 24 mm, 6,73 g Fine

**1**



**301** Troas. Ilion. Marcus Aurelius and Lucius Verus AD 165-166. Bronze Æ 20 mm, 5,13 g Fine

**1**



**302** Phrygia. Cadi. Tranquillina AD 241-244. Bronze Æ 30 mm, 13,84 g Fine

**1**



**303** Cilicia. Mopsouestia - Mopsos. Domitian with Domitia AD 81-96. Bronze Æ 30 mm, 14,96 g Fine

**1**



**304** Cilicia. Tarsos. Trebonianus Gallus AD 251-253. Bronze Æ 32 mm, 17,19 g Fine

**1**



**305** Cilicia. Uncertain mint. Claudius AD 41-54. Bronze Æ 23 mm, 7,44 g Very Fine

**1**



**306** Cappadocia. Caesarea - Eusebeia. Hadrian AD 117-138. Hemidrachm AR 14 mm, 1,56 g Fine

**1**



**307** Seleucis and Pieria. Antioch. Nerva AD 96-98. Bronze Æ 30 mm, 13,14 g Very Fine

**1**



**308** Seleucis and Pieria. Antioch. Elagabal AD 218-222. Billon-Tetradrachm 25 mm, 13,79 g Very Fine

**1**



**309** Seleucis and Pieria. Antioch. Elagabal AD 218-222. Billon-Tetradrachm 24 mm, 14,06 g Nearly Very Fine

**1**



**310** Seleucis and Pieria. Antioch. Elagabal AD 218-222. Billon-Tetradrachm 26 mm, 13,17 g Very Fine

**1**



**311** Seleucis and Pieria. Antioch. Elagabal AD 218-222. Billon-Tetradrachm 26 mm, 12,68 g Nearly Very Fine

**1**



**312** Seleucis and Pieria. Antioch. Elagabal AD 218-222. Billon-Tetradrachm 25 mm, 13,31 g Nearly Very Fine

**1**



**313** Seleucis and Pieria. Antioch. Elagabal AD 218-222. Billon-Tetradrachm 25 mm, 11,34 g Nearly Very Fine

**1**



**314** Seleucis and Pieria. Antioch. Elagabal AD 218-222. Billon-Tetradrachm 25 mm, 12,87 g Nearly Very Fine

**1**



**315** Seleucis and Pieria. Antioch. Elagabal AD 218-222. Billon-Tetradrachm 25 mm, 11,72 g Nearly Very Fine

**1**



**316** Seleucis and Pieria. Antioch. Elagabal AD 218-222. Billon-Tetradrachm 26 mm, 10,56 g Nearly Very Fine

**1**



**317** Seleucis and Pieria. Antioch. Elagabal AD 218-222. Billon-Tetradrachm 25 mm, 13,07 g Very Fine

**1**



**318** Seleucis and Pieria. Antioch. Elagabal AD 218-222. Billon-Tetradrachm 25 mm, 13,59 g Nearly Very Fine

**1**



**319** Seleucis and Pieria. Antioch. Elagabal AD 218-222. Billon-Tetradrachm 25 mm, 11,70 g Very Fine

**1**



**320** Seleucis and Pieria. Antioch. Elagabal AD 218-222. Billon-Tetradrachm 26 mm, 10,86 g Nearly Very Fine

**1**



**321** Seleucis and Pieria. Antioch. Elagabal AD 218-222. Billon-Tetradrachm 24 mm, 12,22 g Very Fine

**1**



**322** Seleucis and Pieria. Antioch. Otacilia Severa AD 244-249. Billon-Tetradrachm 26 mm, 11,74 g Very Fine

**1**





**323** Seleucis and Pieria. Antioch. Philip I Arab AD 244-249.  
Billon-Tetradrachm 26 mm, 12,47 g Very Fine

**1**



**324** Seleucis and Pieria. Antioch. Philip I Arab AD 244-249.  
Billon-Tetradrachm 26 mm, 10,90 g Nearly Very Fine

**1**



**325** Seleucis and Pieria. Antioch. Philip I Arab AD 244-249.  
Billon-Tetradrachm 26 mm, 10,80 g Good Fine

**1**



**326** Seleucis and Pieria. Antioch. Philip I Arab AD 244-249. Billon  
Tetradrachm 27 mm, 14,18 g Very Fine

**1**



**327** Seleucis and Pieria. Antioch. Philip II AD 247-249. Bronze Æ  
30 mm, 16,71 g Fine

**1**



**328** Seleucis and Pieria. Antioch. Philip II AD 247-249. Billon-  
Tetradrachm 25 mm, 12,27 g Nearly Very Fine

**1**



**329** Seleucis and Pieria. Antioch. Philip II AD 247-249. Billon-  
Tetradrachm 28 mm, 12,04 g Very Fine

**1**





**330** Seleucis and Pieria. Antioch. Herennius Etruscus, as Caesar AD 249-251. Billon-Tetradrachm 27 mm, 12,08 g Very Fine

**1**



**331** Seleucis and Pieria. Antioch. Trajan Decius AD 249-251. Billon-Tetradrachm 26 mm, 10,11 g Very Fine

**1**



**332** Seleucis and Pieria. Antioch. Trajan Decius AD 249-251. Billon-Tetradrachm 29 mm, 12,09 g Very Fine

**1**



**333** Seleucis and Pieria. Emesa. Macrinus AD 217-218. Billon-Tetradrachm 24 mm, 12,88 g Fine

**1**



**334** Seleucis and Pieria. Laodicea ad Mare. Caracalla AD 198-217. Billon-Tetradrachm 25 mm, 10,64 g Nearly Very Fine

**1**



**335** Egypt. Alexandria. Claudius AD 41-54. Billon-Tetradrachm 25 mm, 11,11 g Nearly Very Fine

**1**



**336** Egypt. Alexandria. Nero AD 54-68. Billon-Tetradrachm 25 mm, 9,91 g Good Fine

**1**



**337** Egypt. Alexandria. Nero and Poppaea AD 54-68. Billon-Tetradrachm 25 mm, 9,39 g Fine

**1**



**338** Egypt. Alexandria. Nero with Tiberius AD 54-68. Billon-Tetradrachm 24 mm, 12,89 g Very Fine

**1**



**339** Egypt. Alexandria. Titus AD 79-81. Billon-Tetradrachm 24 mm, 12,79 g Very Fine

**1**



**340** Egypt. Alexandria. Domitian AD 81-96. Drachm Æ 35 mm, 18,16 g Fine

**1**



**341** Egypt. Alexandria. Trajan AD 98-117. Drachm Æ 34 mm, 22,04 g Fine

**1**



**342** Egypt. Alexandria. Hadrian AD 117-138. Drachm Æ 34 mm, 25,00 g Fine

**1**



**343** Egypt. Alexandria. Hadrian AD 117-138. Drachm Æ 34 mm, 22,61 g Nearly Very Fine

**1**



**344** Egypt. Alexandria. Hadrian AD 117-138. Billon-Tetradrachm  
23 mm, 9,63 g Nearly Very Fine

**1**



**345** Egypt. Alexandria. Hadrian AD 117-138. Potin Tetradrachm  
24 mm, 11,35 g Good Fine

**1**



**346** Egypt. Alexandria. Commodus AD 180-192. Billon-  
Tetradrachm 24 mm, 11,08 g Nearly Very Fine

**1**



**347** Egypt. Alexandria. Septimius Severus AD 193-211. Billon-  
Tetradrachm 24 mm, 12,56 g Very Fine

**1**



**348** Egypt. Alexandria. Elagabal AD 218-222. Billon-  
Tetradrachm 23 mm, 10,52 g Fine

**1**



**349** Egypt. Alexandria. Maximinus I Thrax AD 235-238. Potin  
Tetradrachm 23 mm, 8,38 g Fine

**1**



**350** Egypt. Alexandria. Balbinus AD 238. Potin Tetradrachm 22  
mm, 10,18 g Good Fine

**1**



**351** Egypt. Alexandria. Gordian III AD 238-244. Potin Tetrachm 22 mm, 9,17 g Fine

**1**



**352** Egypt. Alexandria. Otacilia Severa AD 244-249. Billon-Tetrachm 23 mm, 13,65 g Very Fine

**1**



**353** Egypt. Alexandria. Philip I Arab AD 244-249. Billon-Tetrachm 25 mm, 13,21 g Very Fine

**1**



**354** Egypt. Alexandria. Philip I Arab AD 244-249. Potin Tetrachm 23 mm, 10,40 g Good Fine

**1**



**355** Egypt. Alexandria. Philip I Arab AD 244-249. Potin Tetrachm 23 mm, 10,78 g Fine

**1**



**356** Egypt. Alexandria. Philip I Arab AD 244-249. Potin Tetrachm 24 mm, 12,47 g Good Very Fine

**1**



**357** Egypt. Alexandria. Philip I Arab AD 244-249. Potin Tetrachm 24 mm, 12,28 g Good Fine

**1**





**358** Egypt. Alexandria. Trajan Decius AD 249-251. Billon-Tetradrachm 23 mm, 11,21 g Very Fine

**1**



**359** Egypt. Alexandria. Volusian AD 251-253. Billon-Tetradrachm 25 mm, 11,03 g Very Fine

**1**



**360** Egypt. Alexandria. Claudius II (Gothicus) AD 268-270. Potin Tetradrachm 21 mm, 9,63 g Nearly Very Fine

**1**



**361** Egypt. Alexandria. Claudius II (Gothicus) AD 268-270. Potin Tetradrachm 21 mm, 8,47 g Good Very Fine

**1**



**362** Egypt. Alexandria. Claudius II (Gothicus) AD 268-270. Potin Tetradrachm 23 mm, 11,41 g Very Fine

**1**



**363** Egypt. Alexandria. Claudius II (Gothicus) AD 268-270. Potin Tetradrachm 22 mm, 9,88 g Very Fine

**1**



**364** Egypt. Alexandria. Claudius II (Gothicus) AD 268-270. Potin Tetradrachm 20 mm, 8,58 g Very Fine

**1**





**365** Egypt. Alexandria. Claudius II (Gothicus) AD 268-270. Potin Tetrachm 21 mm, 8,10 g Very Fine

**1**



**366** Egypt. Alexandria. Claudius II (Gothicus) AD 268-270. Potin Tetrachm 19 mm, 6,86 g Very Fine

**1**



**367** Egypt. Alexandria. Aurelian AD 270-275. Potin Tetrachm 21 mm, 10,54 g Nearly Very Fine

**1**



**368** Egypt. Alexandria. Aurelian AD 270-275. Potin Tetrachm 21 mm, 9,50 g Good Very Fine

**1**



**369** Egypt. Alexandria. Aurelian AD 270-275. Potin Tetrachm 22 mm, 8,00 g Nearly Very Fine

**1**



**370** Egypt. Alexandria. Aurelian AD 270-275. Potin Tetrachm 21 mm, 8,21 g Very Fine

**1**



**371** Egypt. Alexandria. Severina AD 270-275. Billon-Tetrachm 20 mm, 6,82 g Very Fine

**1**



**372** Egypt. Alexandria. Severina AD 270-275. Potin Tetrachm  
23 mm, 8,22 g Nearly Very Fine

**1**



**373** Egypt. Alexandria. Tacitus AD 275-276. Potin Tetrachm  
19 mm, 7,66 g Very Fine

**1**



**374** Egypt. Alexandria. Probus AD 276-282. Potin Tetrachm  
20 mm, 7,60 g Very Fine

**1**



**375** Egypt. Alexandria. Probus AD 276-282. Potin Tetrachm  
20 mm, 7,25 g Very Fine

**1**



**376** Egypt. Alexandria. Probus AD 276-282. Potin Tetrachm  
21 mm, 7,84 g Very Fine

**1**



**377** Egypt. Alexandria. Probus AD 276-282. Potin Tetrachm  
20 mm, 8,41 g Very Fine

**1**



**378** Egypt. Alexandria. Probus AD 276-282. Potin Tetrachm  
20 mm, 6,82 g Very Fine

**1**



**379** Egypt. Alexandria. Probus AD 276-282. Potin Tetrachm  
19 mm, 7,54 g Very Fine

**1**



**380** Egypt. Alexandria. Probus AD 276-282. Potin Tetrachm  
19 mm, 8,63 g Very Fine

**1**



**381** Egypt. Alexandria. Probus AD 276-282. Potin Tetrachm  
19 mm, 7,03 g Very Fine

**1**



**382** Egypt. Alexandria. Probus AD 276-282. Potin Tetrachm  
20 mm, 7,98 g Very Fine

**1**



**383** Egypt. Alexandria. Probus AD 276-282. Potin Tetrachm  
20 mm, 6,84 g Nearly Very Fine

**1**



**384** Egypt. Alexandria. Probus AD 276-282. Potin Tetrachm  
19 mm, 9,30 g Very Fine

**1**



**385** Egypt. Alexandria. Carus AD 282-283. Potin Tetrachm  
19 mm, 7,99 g Very Fine

**1**



**386** Egypt. Alexandria. Carinus AD 283-285. Potin Tetrachm  
18 mm, 6,27 g Very Fine

**1**



**387** Egypt. Alexandria. Carinus AD 283-285. Potin Tetrachm  
19 mm, 6,16 g Very Fine

**1**



**388** Egypt. Alexandria. Carinus AD 283-285. Potin Tetrachm  
20 mm, 7,93 g Very Fine

**1**



**389** Egypt. Alexandria. Carinus AD 283-285. Potin Tetrachm  
19 mm, 7,81 g Very Fine

**1**



**390** Egypt. Alexandria. Carinus AD 283-285. Potin Tetrachm  
19 mm, 8,75 g Very Fine

**1**



**391** Egypt. Alexandria. Carinus AD 283-285. Potin Tetrachm  
19 mm, 7,14 g Very Fine

**1**



**392** Egypt. Alexandria. Carinus AD 283-285. Potin Tetrachm  
19 mm, 8,86 g Very Fine

**1**





**393** Egypt. Alexandria. Carinus AD 283-285. Potin Tetradrachm  
19 mm, 7,70 g Very Fine

**1**



**394** Egypt. Alexandria. Carinus AD 283-285. Potin Tetradrachm  
19 mm, 7,39 g Very Fine

**1**



**395** Egypt. Alexandria. Carinus AD 283-285. Potin Tetradrachm  
20 mm, 8,10 g Very Fine

**1**



**396** Egypt. Alexandria. Numerian AD 283-284. Potin  
Tetradrachm 19 mm, 7,57 g Very Fine

**1**



**397** Egypt. Alexandria. Numerian AD 283-284. Potin  
Tetradrachm 19 mm, 7,35 g Very Fine

**1**



**398** Egypt. Alexandria. Numerian AD 283-284. Potin  
Tetradrachm 19 mm, 7,06 g Very Fine

**1**



**399** Egypt. Alexandria. Numerian AD 283-284. Potin  
Tetradrachm 19 mm, 7,45 g Very Fine

**1**





**400** Egypt. Alexandria. Numinian AD 283-284. Potin  
Tetrachm 19 mm, 6,75 g Very Fine

**1**



**401** Egypt. Alexandria. Diocletian AD 284-305. Potin  
Tetrachm 20 mm, 5,32 g Nearly Very Fine

**1**



**402** Egypt. Alexandria. Diocletian AD 284-305. Potin  
Tetrachm 19 mm, 6,80 g Fine

**1**



**403** Egypt. Alexandria. Diocletian AD 284-305. Potin  
Tetrachm 20 mm, 8,83 g Nearly Very Fine

**1**



**404** Egypt. Alexandria. Diocletian AD 284-305. Potin  
Tetrachm 20 mm, 8,35 g Very Fine

**1**



**405** Egypt. Alexandria. Diocletian AD 284-305. Potin  
Tetrachm 20 mm, 8,90 g Very Fine

**1**



**406** Egypt. Alexandria. Diocletian AD 284-305. Potin  
Tetrachm 20 mm, 7,96 g Very Fine

**1**



**407** Egypt. Alexandria. Diocletian AD 284-305. Potin  
Tetrachm 18 mm, 5,81 g Very Fine

**1**



**408** Egypt. Alexandria. Diocletian AD 284-305. Potin  
Tetrachm 18 mm, 6,95 g Good Very Fine

**1**



**409** Egypt. Alexandria. Diocletian AD 284-305. Potin  
Tetrachm 18 mm, 7,91 g Very Fine

**1**



**410** Egypt. Alexandria. Diocletian AD 284-305. Potin  
Tetrachm 20 mm, 7,93 g Good Very Fine

**1**



**411** Egypt. Alexandria. Diocletian AD 284-305. Potin  
Tetrachm 19 mm, 8,36 g Very Fine

**1**



**412** Egypt. Alexandria. Diocletian AD 284-305. Potin  
Tetrachm 20 mm, 7,56 g Very Fine

**1**



**413** Egypt. Alexandria. Diocletian AD 284-305. Potin  
Tetrachm 19 mm, 7,66 g Very Fine

**1**



**414** Egypt. Alexandria. Diocletian AD 284-305. Potin  
Tetrachm 19 mm, 6,95 g Very Fine

**1**



**415** Egypt. Alexandria. Diocletian AD 284-305. Potin  
Tetrachm 17 mm, 7,54 g Very Fine

**1**



**416** Egypt. Alexandria. Diocletian AD 284-305. Potin  
Tetrachm 20 mm, 7,97 g Very Fine

**1**



**417** Egypt. Alexandria. Diocletian AD 284-305. Potin  
Tetrachm 19 mm, 6,68 g Very Fine

**1**



**418** Egypt. Alexandria. Diocletian AD 284-305. Potin  
Tetrachm 20 mm, 7,12 g Very Fine

**1**



**419** Egypt. Alexandria. Diocletian AD 284-305. Potin  
Tetrachm 19 mm, 7,82 g Very Fine

**1**



**420** Egypt. Alexandria. Diocletian AD 284-305. Potin  
Tetrachm 19 mm, 6,14 g Very Fine

**1**



**421** Egypt. Alexandria. Diocletian AD 284-305. Potin  
Tetrachm 22 mm, 7,85 g Very Fine

**1**



**422** Egypt. Alexandria. Diocletian AD 284-305. Potin  
Tetrachm 19 mm, 7,45 g Very Fine

**1**



**423** Egypt. Alexandria. Diocletian AD 284-305. Potin  
Tetrachm 20 mm, 6,48 g Very Fine

**1**



**424** Egypt. Alexandria. Diocletian AD 284-305. Potin  
Tetrachm 20 mm, 7,09 g Very Fine

**1**



**425** Egypt. Alexandria. Diocletian AD 284-305. Potin  
Tetrachm 20 mm, 7,40 g Very Fine

**1**



**426** Egypt. Alexandria. Diocletian AD 284-305. Potin  
Tetrachm 18 mm, 7,92 g Very Fine

**1**



**427** Egypt. Alexandria. Diocletian AD 284-305. Potin  
Tetrachm 21 mm, 6,40 g Very Fine

**1**





**428** Egypt. Alexandria. Diocletian AD 284-305. Potin  
Tetrachm 20 mm, 7,62 g Very Fine

**1**



**429** Egypt. Alexandria. Diocletian AD 284-305. Potin  
Tetrachm 19 mm, 6,99 g Very Fine

**1**



**430** Egypt. Alexandria. Diocletian AD 284-305. Potin  
Tetrachm 19 mm, 8,28 g Very Fine

**1**



**431** Egypt. Alexandria. Diocletian AD 284-305. Potin  
Tetrachm 19 mm, 6,88 g Very Fine

**1**



**432** Egypt. Alexandria. Diocletian AD 284-305. Potin  
Tetrachm 20 mm, 7,44 g Very Fine

**1**



**433** Egypt. Alexandria. Diocletian AD 284-305. Potin  
Tetrachm 20 mm, 7,39 g Very Fine

**1**



**434** Egypt. Alexandria. Diocletian AD 284-305. Potin  
Tetrachm 18 mm, 7,52 g Very Fine

**1**





**435** Egypt. Alexandria. Diocletian AD 284-305. Potin  
Tetrachm 21 mm, 7,04 g Good Very Fine

**1**



**436** Egypt. Alexandria. Diocletian AD 284-305. Potin  
Tetrachm 20 mm, 7,85 g Very Fine

**1**



**437** Egypt. Alexandria. Diocletian AD 284-305. Potin  
Tetrachm 19 mm, 7,47 g Very Fine

**1**



**438** Egypt. Alexandria. Diocletian AD 284-305. Potin  
Tetrachm 20 mm, 7,22 g Very Fine

**1**



**439** Egypt. Alexandria. Diocletian AD 284-305. Potin  
Tetrachm 20 mm, 6,88 g Very Fine

**1**



**440** Egypt. Alexandria. Diocletian AD 284-305. Potin  
Tetrachm 20 mm, 7,95 g Good Very Fine

**1**



**441** Egypt. Alexandria. Diocletian AD 284-305. Potin  
Tetrachm 20 mm, 8,62 g Very Fine

**1**



**442** Egypt. Alexandria. Diocletian AD 284-305. Potin  
Tetrachm 20 mm, 8,66 g Nearly Very Fine

**1**



**443** Egypt. Alexandria. Diocletian AD 284-305. Potin  
Tetrachm 21 mm, 8,83 g Very Fine

**1**



**444** Egypt. Alexandria. Diocletian AD 284-305. Potin  
Tetrachm 20 mm, 7,43 g Nearly Very Fine

**1**



**445** Egypt. Alexandria. Diocletian AD 284-305. Potin  
Tetrachm 19 mm, 6,74 g Very Fine

**1**



**446** Egypt. Alexandria. Diocletian AD 284-305. Potin  
Tetrachm 19 mm, 6,79 g Very Fine

**1**



**447** Egypt. Alexandria. Maximianus Herculius AD 286-305. Potin  
Tetrachm 20 mm, 7,57 g Very Fine

**1**



**448** Egypt. Alexandria. Maximianus Herculius AD 286-305. Potin  
Tetrachm 20 mm, 7,78 g Very Fine

**1**



**449** Egypt. Alexandria. Maximianus Herculius AD 286-305. Potin Tetrachm 21 mm, 6,14 g Nearly Very Fine

**1**



**450** Egypt. Alexandria. Maximianus Herculius AD 286-305. Potin Tetrachm 21 mm, 7,91 g Very Fine

**1**



**451** Egypt. Alexandria. Maximianus Herculius AD 286-305. Potin Tetrachm 17 mm, 8,18 g Good Very Fine

**1**



**452** Egypt. Alexandria. Maximianus Herculius AD 286-305. Potin Tetrachm 19 mm, 7,57 g Very Fine

**1**



**453** Egypt. Alexandria. Maximianus Herculius AD 286-305. Potin Tetrachm 19 mm, 6,77 g Very Fine

**1**



**454** Egypt. Alexandria. Maximianus Herculius AD 286-305. Potin Tetrachm 19 mm, 6,84 g Good Very Fine

**1**



**455** Egypt. Alexandria. Maximianus Herculius AD 286-305. Potin Tetrachm 18 mm, 6,07 g Very Fine

**1**



**456** Egypt. Alexandria. Maximianus Herculius AD 286-305. Potin Tetradrachm 19 mm, 7,56 g Very Fine

**1**



**457** Egypt. Alexandria. Maximianus Herculius AD 286-305. Potin Tetradrachm 19 mm, 7,50 g Very Fine

**1**



**458** Egypt. Alexandria. Maximianus Herculius AD 286-305. Potin Tetradrachm 21 mm, 8,06 g Very Fine

**1**



**459** Egypt. Alexandria. Maximianus Herculius AD 286-305. Potin Tetradrachm 21 mm, 6,95 g Very Fine

**1**



**460** Egypt. Alexandria. Maximianus Herculius AD 286-305. Potin Tetradrachm 18 mm, 7,66 g Good Very Fine

**1**



**461** Egypt. Alexandria. Maximianus Herculius AD 286-305. Potin Tetradrachm 18 mm, 6,65 g Good Very Fine

**1**



**462** Egypt. Alexandria. Maximianus Herculius AD 286-305. Potin Tetradrachm 21 mm, 6,97 g Very Fine

**1**





**463** Egypt. Alexandria. Maximianus Herculeus AD 286-305. Potin Tetradrachm 19 mm, 7,81 g Very Fine

**1**



**464** Egypt. Alexandria. Maximianus Herculeus AD 286-305. Potin Tetradrachm 20 mm, 6,04 g Good Very Fine

**1**



**465** Egypt. Alexandria. Maximianus Herculeus AD 286-305. Potin Tetradrachm 18 mm, 6,39 g Good Very Fine

**1**



**466** Egypt. Alexandria. Maximianus Herculeus AD 286-305. Potin Tetradrachm 19 mm, 8,19 g Very Fine

**1**



**467** Egypt. Alexandria. Maximianus Herculeus AD 286-305. Potin Tetradrachm 20 mm, 7,69 g Very Fine

**1**



**468** Egypt. Alexandria. Maximianus Herculeus AD 286-305. Potin Tetradrachm 19 mm, 6,92 g Good Very Fine

**1**



**469** Egypt. Alexandria. Maximianus Herculeus AD 286-305. Potin Tetradrachm 20 mm, 6,20 g Very Fine

**1**





**470** Egypt. Alexandria. Maximianus Herculius AD 286-305. Potin Tetrachm 19 mm, 7,03 g Very Fine

**1**



**471** Egypt. Alexandria. Maximianus Herculius AD 286-305. Potin Tetrachm 18 mm, 7,30 g Very Fine

**1**



**472** Egypt. Alexandria. Maximianus Herculius AD 286-305. Potin Tetrachm 19 mm, 7,09 g Very Fine

**1**



**473** Egypt. Alexandria. Maximianus Herculius AD 286-305. Potin Tetrachm 19 mm, 7,83 g Very Fine

**1**



**474** Egypt. Alexandria. Maximianus Herculius AD 286-305. Potin Tetrachm 21 mm, 8,36 g Very Fine

**1**



**475** Egypt. Alexandria. Maximianus Herculius AD 286-305. Potin Tetrachm 19 mm, 7,30 g Very Fine

**1**



**476** Egypt. Alexandria. Maximianus Herculius AD 286-305. Potin Tetrachm 21 mm, 7,62 g Very Fine

**1**



**477** Egypt. Alexandria. Maximianus Herculius AD 286-305. Potin Tetrachm 19 mm, 6,73 g Very Fine

**1**



**478** Egypt. Alexandria. Maximianus Herculius AD 286-305. Potin Tetrachm 19 mm, 6,79 g Very Fine

**1**



**479** Egypt. Alexandria. Maximianus Herculius AD 286-305. Potin Tetrachm 20 mm, 7,87 g Very Fine

**1**



**480** Egypt. Alexandria. Maximianus Herculius AD 286-305. Potin Tetrachm 19 mm, 6,96 g Very Fine

**1**



**481** Egypt. Alexandria. Maximianus Herculius AD 286-305. Potin Tetrachm 20 mm, 8,02 g Very Fine

**1**



**482** Egypt. Alexandria. Maximianus Herculius AD 286-305. Potin Tetrachm 19 mm, 7,24 g Nearly Very Fine

**1**



**483** Egypt. Alexandria. Maximianus Herculius AD 286-305. Potin Tetrachm 19 mm, 7,66 g Very Fine

**1**



**484** Egypt. Alexandria. Maximianus Herculius AD 286-305. Potin Tetradrachm 22 mm, 6,67 g Very Fine

**1**



**485** Egypt. Alexandria. Maximianus Herculius AD 286-305. Potin Tetradrachm 20 mm, 7,38 g Very Fine

**1**



**486** Egypt. Alexandria. Maximianus Herculius AD 286-305. Potin Tetradrachm 18 mm, 7,93 g Very Fine

**1**



**487** Egypt. Alexandria. Maximianus Herculius AD 286-305. Potin Tetradrachm 19 mm, 7,40 g Nearly Very Fine

**1**



**488** Egypt. Alexandria. Maximianus Herculius AD 286-305. Potin Tetradrachm 18 mm, 7,24 g Nearly Very Fine

**1**



**489** Egypt. Alexandria. Maximianus Herculius AD 286-305. Potin Tetradrachm 19 mm, 7,45 g Very Fine

**1**



**490** Egypt. Alexandria. Constantius I Chlorus, as Caesar AD 293-305. Potin Tetradrachm 20 mm, 6,92 g Very Fine

**1**



**491** Egypt. Alexandria. Constantius I Chlorus AD 305-306. Potin Tetradrachm 20 mm, 8,02 g Very Fine

**1**



**492** Anonymous 225-217 BC. Rome Grave Sextans Æ 33 mm, 37,89 g Very Fine

**1**



**493** C. Servilius Vatia 127 BC. Rome Semis Æ 22 mm, 5,85 g Very Fine

**1**



**494** L. Memmius 109 BC. Rome Denarius AR 19 mm, 3,88 g Very Fine

**1**



**495** Man. Aquillius 109-108 BC. Rome Denarius AR 20 mm, 3,90 g Very Fine

**1**



**496** L. Julius Bursio 85 BC. Rome Denarius AR 19 mm, 4,03 g Very Fine

**1**



**497** C. Licinius L. F. Macer 84 BC. Rome Denarius AR 25 mm, 3,51 g Very Fine

**1**





**498** L. Papius 79 BC. Rome Serrate Denarius AR 20 mm, 3,60 g  
Very Fine

**1**



**499** C. Postumius 73 BC. Rome Denarius AR 20 mm, 3,54 g  
Very Fine

**1**



**500** L. Cassius Longinus 63 BC. Rome Denarius AR 18 mm, 3,79  
g Very Fine

**1**



**501** Marc Antony and Octavian 41 BC. Rome Denarius AR 20  
mm, 3,45 g Nearly Very Fine, filled hole

**1**



**502** Mark Antony 32-31 BC. Military mint moving with M. Antony  
Denarius AR 19 mm, 3,20 g Very Fine

**1**



**503** Augustus 27 BC-AD 14. Rome As Æ 29 mm, 9,76 g  
Very Fine

**1**



**504** Augustus 27 BC-AD 14. Rome Quadrans Æ 17 mm, 3,10 g  
Nearly Very Fine

**1**





**505** Divus Augustus AD 14. Rome As Æ 27 mm, 13,62 g Fine

**1**



**506** Tiberius AD 14-37. Lugdunum As Æ 28 mm, 10,83 g Fine

**1**



**507** Caligula AD 37-41. Rome Quadrans Æ 18 mm, 2,73 g Good Fine

**1**



**508** Germanicus AD 37-41. Rome As Æ 27 mm, 9,78 g Very Fine

**1**



**509** Vespasian AD 69-79. "Judaea Capta" issue. Rome Denarius AR 18 mm, 2,67 g Very Fine

**1**



**510** Titus AD 79-81. Rome Denarius AR 18 mm, 3,19 g Fine

**1**



**511** Domitian AD 81-96. Rome Sestertius Æ 34 mm, 26,33 g Nearly Very Fine

**1**



**512** Domitian AD 81-96. Rome As Æ 28 mm, 10,13 g Nearly Very Fine

**1**



**513** Trajan AD 98-117. Rome Antoninianus AR 22 mm, 3,89 g Very Fine

**1**



**514** Trajan AD 98-117. Rome Quadrans Æ 16 mm, 2,54 g Fine

**1**



**515** Trajan AD 98-117. Rome Quadrans Æ 17 mm, 3,62 g Very Fine

**1**



**516** Hadrian AD 117-138. Rome Denarius AR 17 mm, 3,41 g Fine

**1**



**517** Sabina. Augusta AD 128-137. Rome Denarius AR 19 mm, 3,12 g Good Very Fine

**1**



**518** Aelius, as Caesar AD 136-138. Rome Sestertius Æ 31 mm, 27,47 g Fine

**1**



**519** Antoninus Pius AD 138-161. Rome Denarius AR 18 mm,  
2,75 g Very Fine

**1**



**520** Antoninus Pius AD 138-161. Rome Denarius AR 17 mm,  
2,53 g Fine

**1**



**521** Antoninus Pius AD 138-161. Rome Sestertius Æ 32 mm,  
27,69 g Nearly Very Fine

**1**



**522** Antoninus Pius AD 138-161. Rome As Æ 26 mm, 9,65 g  
Good Fine

**1**



**523** Marcus Aurelius, as Caesar AD 139-161. Rome As Æ 26  
mm, 11,67 g Good Fine

**1**



**524** Diva Faustina I AD 140-141. Rome Denarius AR 19 mm,  
2,85 g Very Fine

**1**



**525** Diva Faustina I AD 140-141. Rome Sestertius Æ 31 mm,  
28,92 g Good Fine

**1**



**526** Diva Faustina I AD 140-141. Rome As Æ 27 mm, 11,70 g  
Very Fine

**1**



**527** Faustina II AD 147-175. Rome Denarius AR 17 mm, 2,62 g  
Fine

**1**



**528** Faustina II AD 147-175. Rome Sestertius Æ 33 mm, 22,16 g  
Very Fine

**1**



**529** Divus Antoninus Pius AD 161. Rome Denarius AR 17 mm,  
2,30 g Very Fine

**1**



**530** Marcus Aurelius AD 161-180. Rome Sestertius Æ 32 mm,  
22,01 g Fine

**1**



**531** Marcus Aurelius AD 161-180. Rome Quadrans Æ 18 mm,  
3,21 g Nearly Very Fine

**1**



**532** Lucilla AD 164-182. Rome Sestertius Æ 32 mm, 23,57 g  
Very Fine

**1**





**533** Crispina. Augusta AD 178-182. Rome Denarius AR 19 mm, 2,68 g Good Fine

**1**



**534** Commodus AD 180-192. Rome Dupondius Æ 26 mm, 12,35 g Very Fine

**1**



**535** Julia Domna. Augusta AD 193-217. Rome Denarius AR 20 mm, 3,28 g Very Fine

**1**



**536** Septimius Severus AD 193-211. Rome Denarius AR 19 mm, 3,41 g Nearly Very Fine

**1**



**537** Caracalla AD 198-217. Rome Denarius AR 19 mm, 2,79 g Very Fine

**1**



**538** Caracalla AD 198-217. Rome Denarius AR 20 mm, 3,44 g Very Fine

**1**



**539** Caracalla AD 198-217. Rome Denarius AR 20 mm, 3,40 g Very Fine

**1**



**540** Caracalla AD 198-217. Rome Denarius AR 18 mm, 3,70 g  
Very Fine

**1**



**541** Caracalla AD 198-217. Rome Quinarius AR 15 mm, 1,22 g  
Fine

**1**



**542** Elagabal AD 218-222. Antioch Denarius AR 19 mm, 2,79 g  
Very Fine

**1**



**543** Elagabal AD 218-222. Rome Denarius AR 18 mm, 3,08 g  
Very Fine

**1**



**544** Elagabal AD 218-222. Rome Denarius AR 19 mm, 2,54 g  
Good Very Fine

**1**



**545** Severus Alexander AD 222-235. Rome Denarius AR 18 mm,  
3,21 g Good Very Fine

**1**



**546** Severus Alexander AD 222-235. Rome Denarius AR 20 mm,  
2,64 g Good Very Fine

**1**



**547** Severus Alexander AD 222-235. Rome Sestertius Æ 31 mm, 18,52 g Very Fine

**1**



**548** Julia Mamaea. Augusta AD 225-235. Rome Sestertius Æ 30 mm, 17,29 g Good Fine

**1**



**549** Julia Mamaea. Augusta AD 225-235. Rome Sestertius Æ 30 mm, 19,47 g Nearly Very Fine

**1**



**550** Maximus, Caesar AD 236-238. Rome Sestertius Æ 32 mm, 22,28 g Very Fine

**1**



**551** Gordian III AD 238-244. Antioch Antoninianus AR 21 mm, 3,31 g Good Very Fine

**1**



**552** Gordian III AD 238-244. Rome Denarius AR 20 mm, 3,24 g Very Fine

**1**



**553** Gordian III AD 238-244. Rome Denarius AR 20 mm, 3,14 g Extremely Fine

**1**



**554** Gordian III AD 238-244. Rome Antoninianus AR 22 mm, 5,08 g Extremely Fine

**1**



**555** Otacilia Severa AD 244-249. Rome Antoninianus AR 24 mm, 3,75 g Very Fine

**1**



**556** Philip I Arab AD 244-249. Antioch Antoninianus AR 23 mm, 3,94 g Extremely Fine

**1**



**557** Philip I Arab AD 244-249. Antioch Antoninianus AR 21 mm, 4,02 g Extremely Fine

**1**



**558** Philip I Arab AD 244-249. Antioch Antoninianus AR 21 mm, 4,70 g Extremely Fine

**1**



**559** Philip I Arab AD 244-249. Antioch Antoninianus AR 23 mm, 4,83 g Good Extremely Fine

**1**



**560** Philip I Arab AD 244-249. Rome Sestertius Æ 30 mm, 21,42 g Very Fine

**1**





**561** Philip I Arab AD 244-249. Rome Sestertius Æ 30 mm, 17,10 g Very Fine

**1**



**562** Philip II AD 247-249. Antioch Antoninianus AR 24 mm, 4,09 g Extremely Fine

**1**



**563** Philip II AD 247-249. Antioch Antoninianus AR 21 mm, 4,91 g Good Extremely Fine

**1**



**564** Philip II AD 247-249. Rome Antoninianus AR 23 mm, 4,08 g Very Fine

**1**



**565** Herennius Etruscus, as Caesar AD 249-251. Rome Sestertius Æ 30 mm, 18,55 g Very Fine

**1**



**566** Trajan Decius AD 249-251. Rome Antoninianus AR 22 mm, 4,56 g Very Fine

**1**



**567** Trajan Decius AD 249-251. Rome Antoninianus AR 26 mm, 4,52 g Good Very Fine

**1**



**568** Trebonianus Gallus AD 251-253. Antioch Antoninianus AR  
22 mm, 3,37 g Very Fine

**1**



**569** Trebonianus Gallus AD 251-253. Antioch Antoninianus Æ  
silvered 21 mm, 2,58 g Very Fine

**1**



**570** Trebonianus Gallus AD 251-253. Rome Sestertius Æ 28 mm,  
16,87 g Very Fine

**1**



**571** Gallienus AD 253-268. Antioch Billon Antoninianus 22 mm,  
3,36 g Very Fine

**1**



**572** Gallienus AD 253-268. Antioch Billon Antoninianus 23 mm,  
3,42 g Very Fine

**1**



**573** Gallienus AD 253-268. Antioch Billon Antoninianus 22 mm,  
3,90 g Very Fine

**1**



**574** Gallienus AD 253-268. Antioch Billon Antoninianus 20 mm,  
3,43 g Good Very Fine

**1**



**575** Gallienus AD 253-268. Antioch Billon Antoninianus 23 mm,  
3,29 g Nearly Very Fine

**1**



**576** Gallienus AD 253-268. Antioch Billon Antoninianus 22 mm,  
2,64 g Very Fine

**1**



**577** Gallienus AD 253-268. Antioch Billon Antoninianus 23 mm,  
3,63 g Very Fine

**1**



**578** Gallienus AD 253-268. Antioch Billon Antoninianus 21 mm,  
4,29 g Good Very Fine

**1**



**579** Gallienus AD 253-268. Antioch Billon Antoninianus 21 mm,  
3,60 g Nearly Very Fine

**1**



**580** Gallienus AD 253-268. Antioch Billon Antoninianus 21 mm,  
3,33 g Good Very Fine

**1**



**581** Gallienus AD 253-268. Antioch Billon Antoninianus 22 mm,  
3,15 g Nearly Very Fine

**1**



**582** Gallienus AD 253-268. Antioch Billon Antoninianus 20 mm,  
3,77 g Very Fine

**1**



**583** Gallienus AD 253-268. Antioch Billon Antoninianus 21 mm,  
3,79 g Very Fine

**1**



**584** Gallienus AD 253-268. Antioch Billon Antoninianus 20 mm,  
3,15 g Nearly Very Fine

**1**



**585** Gallienus AD 253-268. Antioch Billon Antoninianus 21 mm,  
3,56 g Very Fine

**1**



**586** Gallienus AD 253-268. Antioch Billon Antoninianus 21 mm,  
3,66 g Nearly Very Fine

**1**



**587** Gallienus AD 253-268. Antioch Billon Antoninianus 21 mm,  
3,81 g Very Fine

**1**



**588** Gallienus AD 253-268. Antioch Billon Antoninianus 21 mm,  
3,83 g Very Fine

**1**





**589** Gallienus AD 253-268. Antioch Billon Antoninianus 21 mm, 4,28 g Good Very Fine

**1**



**590** Gallienus AD 253-268. Antioch Billon Antoninianus 22 mm, 2,99 g Nearly Extremely Fine

**1**



**591** Gallienus AD 253-268. Antioch Billon Antoninianus 21 mm, 4,25 g Good Very Fine

**1**



**592** Gallienus AD 253-268. Antioch Billon Antoninianus 22 mm, 3,10 g Very Fine

**1**



**593** Gallienus AD 253-268. Rome Antoninianus Æ 22 mm, 3,86 g Very Fine

**1**



**594** Gallienus AD 253-268. Samosata Billon Antoninianus 19 mm, 3,77 g Nearly Very Fine

**1**



**595** Gallienus AD 253-268. Samosata Billon Antoninianus 23 mm, 3,71 g Very Fine

**1**



**596** Salonina AD 254-268. Antioch Billon Antoninianus 22 mm, 3,08 g Nearly Very Fine

**1**



**597** Salonina AD 254-268. Antioch Billon Antoninianus 21 mm, 2,91 g Good Very Fine

**1**



**598** Macrianus AD 260-261. Samosata Billon Antoninianus 22 mm, 3,46 g Very Fine

**1**



**599** Postumus, Usurper in Gaul AD 260-269. Colonia Agrippinensium (Cologne) Antoninianus AR 24 mm, 3,37 g Very Fine

**1**



**600** Claudius II (Gothicus) AD 268-270. Follis Æ 17 mm, 2,48 g Fine

**1**



**601** Claudius II (Gothicus) AD 268-270. Antioch Billon Antoninianus 20 mm, 3,08 g Very Fine

**1**



**602** Claudius II (Gothicus) AD 268-270. Antioch Billon Antoninianus 20 mm, 3,90 g Nearly Very Fine

**1**



**603** Claudius II (Gothicus) AD 268-270. Antioch Billon  
Antoninianus 20 mm, 3,22 g Very Fine

**1**



**604** Claudius II (Gothicus) AD 268-270. Antioch Billon  
Antoninianus 21 mm, 3,37 g Nearly Very Fine

**1**



**605** Claudius II (Gothicus) AD 268-270. Antioch Billon  
Antoninianus 21 mm, 3,51 g Very Fine

**1**



**606** Claudius II (Gothicus) AD 268-270. Antioch Billon  
Antoninianus 21 mm, 3,65 g Very Fine

**1**



**607** Claudius II (Gothicus) AD 268-270. Antioch Billon  
Antoninianus 21 mm, 3,77 g Very Fine

**1**



**608** Claudius II (Gothicus) AD 268-270. Antioch Billon  
Antoninianus 20 mm, 3,03 g Very Fine

**1**



**609** Claudius II (Gothicus) AD 268-270. Antioch Billon  
Antoninianus 20 mm, 3,71 g Nearly Very Fine

**1**



**610** Claudius II (Gothicus) AD 268-270. Rome Antoninianus Æ 20 mm, 2,79 g Good Fine

**1**



**611** Claudius II (Gothicus) AD 268-270. Rome Antoninianus Æ 21 mm, 3,14 g Very Fine

**1**



**612** Victorinus AD 269-271. Antoninianus Æ 20 mm, 3,85 g Very Fine

**1**



**613** Victorinus AD 269-271. Treveri Antoninianus Æ 22 mm, 3,36 g Good Very Fine

**1**



**614** Aurelian AD 270-275. Cyzicus Billon Antoninianus 20 mm, 3,26 g Very Fine

**1**



**615** Aurelian AD 270-275. Rome Antoninianus Æ 22 mm, 3,25 g Very Fine

**1**



**616** Aurelian AD 270-275. Serdica Antoninianus Æ 24 mm, 3,13 g Very Fine

**1**





**617** Aurelian AD 270-275. Siscia Antoninianus Æ 25 mm, 3,98 g  
Nearly Very Fine

**1**



**618** Aurelian AD 270-275. Siscia Antoninianus Æ 22 mm, 3,28 g  
Very Fine

**1**



**619** Aurelian AD 270-275. Siscia Antoninianus Æ silvered 23  
mm, 3,24 g Extremely Fine

**1**



**620** Aurelian AD 270-275. Ticinum Antoninianus Æ 22 mm, 3,67  
g Very Fine

**1**



**621** Aurelian AD 270-275. Ticinum Antoninianus Æ 22 mm, 3,72  
g Nearly Extremely Fine

**1**



**622** Aurelian and Vabalathus AD 270-275. Antioch Antoninianus  
Æ 20 mm, 3,57 g Very Fine

**1**



**623** Divus Claudius II (Gothicus) AD 270. Rome Follis Æ 16 mm,  
1,91 g Nearly Very Fine

**1**



**624** Severina AD 270-275. Antioch Antoninianus Æ 22 mm, 3,42 g Very Fine

**1**



**625** Severina AD 270-275. Rome Antoninianus Æ 22 mm, 3,77 g Very Fine

**1**



**626** Tetricus I AD 271-274. Treveri Antoninianus Æ 18 mm, 1,51 g Very Fine

**1**



**627** Tetricus II, as Caesar AD 273-274. Treveri Antoninianus Æ 18 mm, 2,73 g Good Fine

**1**



**628** Tacitus AD 275-276. Rome Antoninianus Æ 22 mm, 2,38 g Nearly Very Fine

**1**



**629** Tacitus AD 275-276. Rome Antoninianus Æ 23 mm, 3,20 g Very Fine

**1**



**630** Tacitus AD 275-276. Rome Antoninianus Æ 22 mm, 4,04 g Nearly Very Fine

**1**



**631** Florian AD 276. Cyzicus Antoninianus Æ 22 mm, 2,92 g  
Nearly Very Fine

**1**



**632** Florian AD 276. Rome Antoninianus Æ 22 mm, 3,91 g  
Nearly Very Fine

**1**



**633** Probus AD 276-282. Serdica Antoninianus Æ 22 mm, 4,65 g  
Very Fine

**1**



**634** Probus AD 276-282. Siscia Antoninianus Æ 22 mm, 3,84 g  
Very Fine

**1**



**635** Probus AD 276-282. Siscia Antoninianus Æ 22 mm, 3,22 g  
Very Fine

**1**



**636** Probus AD 276-282. Siscia Antoninianus Æ 24 mm, 3,37 g  
Nearly Very Fine

**1**



**637** Probus AD 276-282. Ticinum Antoninianus Æ 22 mm, 3,98 g  
Nearly Very Fine

**1**



**638** Probus AD 276-282. Ticinum Antoninianus Æ 23 mm, 4,05 g  
Very Fine

**1**



**639** Probus AD 276-282. Ticinum Antoninianus Æ 21 mm, 3,52 g  
Extremely Fine

**1**



**640** Probus AD 276-282. Ticinum Antoninianus Æ silvered 23  
mm, 3,61 g Very Fine

**1**



**641** Carinus AD 283-285. Antioch Antoninianus Æ 21 mm, 3,72  
g Very Fine

**1**



**642** Numerian AD 283-284. Rome Antoninianus Æ 22 mm, 4,83  
g Nearly Very Fine

**1**



**643** Numerian AD 283-284. Rome Antoninianus Æ 22 mm, 3,74  
g Nearly Very Fine

**1**



**644** Numerian AD 283-284. Tripolis Antoninianus Æ 22 mm,  
3,01 g Good Fine

**1**





**645** Diocletian AD 284-305. Alexandria Follis Æ 21 mm, 3,47 g  
Very Fine

**1**



**646** Diocletian AD 284-305. Antioch Antoninianus Æ silvered 22 mm, 3,77 g Nearly Extremely Fine

**1**



**647** Diocletian AD 284-305. Antioch Follis Æ 20 mm, 3,11 g Very Fine

**1**



**648** Diocletian AD 284-305. Carthage Follis Æ 30 mm, 8,69 g  
Very Fine

**1**



**649** Diocletian AD 284-305. Heraclea Antoninianus Æ silvered 22 mm, 4,60 g Extremely Fine

**1**



**650** Diocletian AD 284-305. Heraclea Follis Æ 27 mm, 9,39 g  
Very Fine

**1**



**651** Diocletian AD 284-305. Heraclea Radiatus Æ 22 mm, 4,00 g  
Nearly Very Fine

**1**



**652** Diocletian AD 284-305. Siscia Follis Æ 28 mm, 11,20 g Very Fine

**1**



**653** Diocletian AD 284-305. Thessaloniki Follis Æ 28 mm, 11,51 g Very Fine

**1**



**654** Diocletian AD 284-305. Ticinum Antoninianus Æ 22 mm, 3,21 g Very Fine

**1**



**655** Divus Carus AD 285. Rome Antoninianus Æ 20 mm, 3,73 g Nearly Very Fine

**1**



**656** Divus Carus AD 285. Rome Antoninianus Æ 22 mm, 3,66 g Fine

**1**



**657** Divus Carus AD 285. Siscia Antoninianus Æ 21 mm, 2,90 g Very Fine

**1**



**658** Carausius AD 286-293. Londinium Antoninianus Æ 23 mm, 3,32 g Very Fine

**1**



**659** Maximianus Herculeus AD 286-305. Cyzicus Radiatus Æ 22 mm, 3,70 g Fine

**1**



**660** Maximianus Herculeus AD 286-305. Cyzicus Radiatus Æ 23 mm, 3,12 g Very Fine

**1**



**661** Maximianus Herculeus AD 286-305. Cyzicus Radiatus Æ 21 mm, 3,42 g Very Fine

**1**



**662** Maximianus Herculeus AD 286-305. Cyzicus Radiatus Æ 24 mm, 3,59 g Nearly Very Fine

**1**



**663** Maximianus Herculeus AD 286-305. Cyzicus Radiatus Æ 22 mm, 3,24 g Nearly Very Fine

**1**



**664** Maximianus Herculeus AD 286-305. Cyzicus Radiatus Æ 22 mm, 3,37 g Very Fine

**1**



**665** Maximianus Herculeus AD 286-305. Heraclea Antoniniana Æ silvered 20 mm, 3,75 g Good Very Fine

**1**



**666** Maximianus Herculus AD 286-305. Heraclea Radiatus Æ 21 mm, 3,13 g Good Fine

**1**



**667** Maximianus Herculus AD 286-305. Treveri Follis Æ 28 mm, 10,10 g Very Fine

**1**



**668** Constantius I Chlorus, as Caesar AD 293-305. Alexandria Antoninianus Æ 21 mm, 2,71 g Nearly Very Fine

**1**



**669** Galeria Valeria AD 293-311. Heraclea Follis Æ 27 mm, 6,04 g Very Fine

**1**



**670** Galerius Maximianus, as Caesar AD 293-305. Cyzicus Radiatus Æ 23 mm, 2,37 g Very Fine

**1**



**671** Galerius Maximianus, as Caesar AD 293-305. Cyzicus Radiatus Æ 20 mm, 2,85 g Very Fine

**1**



**672** Constantius I Chlorus AD 305-306. Alexandria Follis Æ 20 mm, 2,41 g Very Fine

**1**





**673** Constantius I Chlorus AD 305-306. Alexandria Follis Æ 22 mm, 3,30 g Very Fine

**1**



**674** Maximinus II Daia, as Caesar AD 305-308. Alexandria Follis Æ 24 mm, 5,38 g Nearly Very Fine

**1**



**675** Maximinus II Daia, as Caesar AD 305-308. Alexandria Radiatus Æ 21 mm, 2,18 g Very Fine

**1**



**676** Maximinus II Daia, as Caesar AD 305-308. Alexandria Radiatus Æ 20 mm, 2,69 g Very Fine

**1**



**677** Maximinus II Daia, as Caesar AD 305-308. Alexandria Radiatus Æ 20 mm, 2,98 g Nearly Very Fine

**1**



**678** Maximinus II Daia, as Caesar AD 305-308. Antioch Follis Æ 25 mm, 4,43 g Fine

**1**



**679** Severus II, as Caesar AD 305-306. Serdica Follis Æ 28 mm, 9,31 g Very Fine

**1**



**680** Constantine I the Great AD 306-337. Alexandria Follis Æ 17 mm, 2,63 g Very Fine

**1**



**681** Constantine I the Great AD 306-337. Alexandria Follis Æ 20 mm, 3,70 g Extremely Fine

**1**



**682** Constantine I the Great AD 306-337. Alexandria Follis Æ 19 mm, 3,47 g Good Very Fine

**1**



**683** Constantine I the Great AD 306-337. Alexandria Follis Æ 18 mm, 3,13 g Nearly Extremely Fine

**1**



**684** Constantine I the Great AD 306-337. Antioch Follis Æ 17 mm, 2,59 g Very Fine

**1**



**685** Constantine I the Great AD 306-337. Antioch Follis Æ 17 mm, 1,85 g Very Fine

**1**



**686** Constantine I the Great AD 306-337. Antioch Follis Æ 17 mm, 2,90 g Good Very Fine

**1**



**687** Constantine I the Great AD 306-337. Antioch Follis Æ 17 mm, 2,52 g Very Fine

**1**



**688** Constantine I the Great AD 306-337. Antioch Follis Æ 18 mm, 2,28 g Good Very Fine

**1**



**689** Constantine I the Great AD 306-337. Antioch Follis Æ 15 mm, 1,81 g Good Very Fine

**1**



**690** Constantine I the Great AD 306-337. Antioch Follis Æ 17 mm, 2,42 g Very Fine

**1**



**691** Constantine I the Great AD 306-337. Antioch Follis Æ 16 mm, 2,08 g Good Very Fine

**1**



**692** Constantine I the Great AD 306-337. Antioch Follis Æ 15 mm, 1,80 g Very Fine

**1**



**693** Constantine I the Great AD 306-337. Antioch Follis Æ 17 mm, 2,37 g Good Very Fine

**1**



**694** Constantine I the Great AD 306-337. Antioch Follis Æ 15 mm, 1,56 g Very Fine

**1**



**695** Constantine I the Great AD 306-337. Antioch Follis Æ 18 mm, 1,89 g Very Fine

**1**



**696** Constantine I the Great AD 306-337. Antioch Follis Æ 16 mm, 1,39 g Good Very Fine

**1**



**697** Constantine I the Great AD 306-337. Antioch Follis Æ 18 mm, 2,98 g Very Fine

**1**



**698** Constantine I the Great AD 306-337. Antioch Follis Æ 19 mm, 4,16 g Very Fine

**1**



**699** Constantine I the Great AD 306-337. Antioch Follis Æ 19 mm, 3,26 g Good Very Fine

**1**



**700** Constantine I the Great AD 306-337. Antioch Follis Æ 19 mm, 3,06 g Good Very Fine

**1**





**701** Constantine I the Great AD 306-337. Antioch Follis Æ 20 mm, 2,94 g Very Fine

**1**



**702** Constantine I the Great AD 306-337. Antioch Follis Æ 20 mm, 3,80 g Good Very Fine

**1**



**703** Constantine I the Great AD 306-337. Arelate (Arles) Follis Æ 21 mm, 3,72 g Very Fine

**1**



**704** Constantine I the Great AD 306-337. Arelate (Arles) Follis Æ 22 mm, 3,37 g Very Fine

**1**



**705** Constantine I the Great AD 306-337. Constantinople Follis Æ 18 mm, 2,36 g Very Fine

**1**



**706** Constantine I the Great AD 306-337. Constantinople Follis Æ 18 mm, 2,37 g Very Fine

**1**



**707** Constantine I the Great AD 306-337. Constantinople Follis Æ 19 mm, 1,76 g Nearly Very Fine

**1**



**708** Constantine I the Great AD 306-337. Constantinople Follis  
Æ 18 mm, 2,19 g Very Fine

**1**



**709** Constantine I the Great AD 306-337. Constantinople Follis  
Æ 20 mm, 2,65 g Fine

**1**



**710** Constantine I the Great AD 306-337. Constantinople Follis  
Æ 19 mm, 3,20 g Good Very Fine

**1**



**711** Constantine I the Great AD 306-337. Contemporary  
barbaric imitation Follis Æ 17 mm, 2,53 g Very Fine

**1**



**712** Constantine I the Great AD 306-337. Contemporary  
barbaric imitation Follis Æ 17 mm, 2,26 g Nearly Very Fine

**1**



**713** Constantine I the Great AD 306-337. Cyzicus Follis Æ  
silvered 18 mm, 2,36 g Good Very Fine

**1**



**714** Constantine I the Great AD 306-337. Cyzicus Follis Æ 18  
mm, 2,19 g Nearly Very Fine

**1**



**715** Constantine I the Great AD 306-337. Cyzicus Follis Æ 16 mm, 1,84 g Very Fine

**1**



**716** Constantine I the Great AD 306-337. Heraclea Follis Æ 15 mm, 2,06 g Very Fine

**1**



**717** Constantine I the Great AD 306-337. Lugdunum Follis Æ 19 mm, 3,72 g Very Fine

**1**



**718** Constantine I the Great AD 306-337. Lugdunum Follis Æ 22 mm, 5,14 g Very Fine

**1**



**719** Constantine I the Great AD 306-337. Lugdunum Follis Æ 20 mm, 3,20 g Nearly Very Fine

**1**



**720** Constantine I the Great AD 306-337. Lugdunum Follis Æ 22 mm, 4,22 g Extremely Fine

**1**



**721** Constantine I the Great AD 306-337. Lugdunum Follis Æ 18 mm, 3,17 g Extremely Fine

**1**



**722** Constantine I the Great AD 306-337. Nicomedia Follis Æ 17 mm, 2,23 g Very Fine

**1**



**723** Constantine I the Great AD 306-337. Nicomedia Follis Æ 20 mm, 2,42 g Nearly Very Fine

**1**



**724** Constantine I the Great AD 306-337. Nicomedia Follis Æ 17 mm, 2,03 g Very Fine

**1**



**725** Constantine I the Great AD 306-337. Nicomedia Follis Æ mm, 1,40 g Very Fine

**1**



**726** Constantine I the Great AD 306-337. Nicomedia Follis Æ 20 mm, 2,37 g Very Fine

**1**



**727** Constantine I the Great AD 306-337. Nicomedia Follis Æ 15 mm, 2,68 g Nearly Very Fine

**1**



**728** Constantine I the Great AD 306-337. Nicomedia Follis Æ 18 mm, 2,66 g Very Fine

**1**





**729** Constantine I the Great AD 306-337. Rome Follis Æ 20 mm,  
3,61 g Very Fine

**1**



**730** Constantine I the Great AD 306-337. Rome Follis Æ 17 mm,  
2,73 g Very Fine

**1**



**731** Constantine I the Great AD 306-337. Rome Follis Æ 20 mm,  
2,50 g Very Fine

**1**



**732** Constantine I the Great AD 306-337. Rome Follis Æ 22 mm,  
4,76 g Very Fine

**1**



**733** Constantine I the Great AD 306-337. Rome Follis Æ 20 mm,  
3,58 g Very Fine

**1**



**734** Constantine I the Great AD 306-337. Rome Follis Æ 20 mm,  
2,53 g Very Fine

**1**



**735** Constantine I the Great AD 306-337. Rome Follis Æ 19 mm,  
3,34 g Very Fine

**1**



**736** Constantine I the Great AD 306-337. Rome Follis Æ 22 mm,  
2,77 g Fine

**1**



**737** Constantine I the Great AD 306-337. Rome Follis Æ 18 mm,  
2,73 g Good Very Fine

**1**



**738** Constantine I the Great AD 306-337. Rome Follis Æ 18 mm,  
3,14 g Good Very Fine

**1**



**739** Constantine I the Great AD 306-337. Rome Follis Æ 19 mm,  
3,48 g Extremely Fine

**1**



**740** Constantine I the Great AD 306-337. Rome Follis Æ 21 mm,  
4,77 g Extremely Fine

**1**



**741** Constantine I the Great AD 306-337. Sirmium Follis Æ 19  
mm, 2,67 g Fine

**1**



**742** Constantine I the Great AD 306-337. Siscia Follis Æ 21 mm,  
4,01 g Good Very Fine

**1**



**743** Constantine I the Great AD 306-337. Siscia Follis Æ 23 mm, 3,35 g Very Fine

**1**



**744** Constantine I the Great AD 306-337. Siscia Follis Æ 19 mm, 4,11 g Extremely Fine

**1**



**745** Constantine I the Great AD 306-337. Thessaloniki Follis Æ 19 mm, 3,48 g Good Very Fine

**1**



**746** Constantine I the Great AD 306-337. Thessaloniki Follis Æ 17 mm, 2,03 g Nearly Very Fine

**1**



**747** Constantine I the Great AD 306-337. Thessaloniki Follis Æ 20 mm, 3,19 g Very Fine

**1**



**748** Constantine I the Great AD 306-337. Thessaloniki Follis Æ 19 mm, 3,08 g Good Very Fine

**1**



**749** Constantine I the Great AD 306-337. Thessaloniki Follis Æ 19 mm, 2,96 g Very Fine

**1**



**750** Constantine I the Great AD 306-337. Ticinum Follis Æ 18 mm, 3,55 g Very Fine

**1**



**751** Constantine I the Great AD 306-337. Ticinum Follis Æ 18 mm, 2,76 g Nearly Extremely Fine

**1**



**752** Constantine I the Great AD 306-337. Ticinum Follis Æ 20 mm, 3,32 g Good Very Fine

**1**



**753** Constantine I the Great AD 306-337. Ticinum Follis Æ 18 mm, 2,89 g Nearly Extremely Fine

**1**



**754** Constantine I the Great AD 306-337. Ticinum Follis Æ 19 mm, 3,42 g Extremely Fine

**1**



**755** Constantine I the Great AD 306-337. Treveri Follis Æ 19 mm, 3,46 g Very Fine

**1**



**756** Constantine I the Great AD 306-337. Treveri Follis Æ 19 mm, 3,86 g Nearly Extremely Fine

**1**





**757** Maxentius AD 306-312. Aquileia Follis Æ 27 mm, 5,99 g  
Very Fine

**1**



**758** Licinius I AD 308-324. Alexandria Follis Æ silvered 20 mm,  
3,86 g Very Fine

**1**



**759** Licinius I AD 308-324. Alexandria Follis Æ 20 mm, 2,95 g  
Very Fine

**1**



**760** Licinius I AD 308-324. Alexandria Follis Æ 20 mm, 3,60 g  
Very Fine

**1**



**761** Licinius I AD 308-324. Antioch Follis Æ 22 mm, 2,44 g Very  
Fine

**1**



**762** Licinius I AD 308-324. Antioch Follis Æ 20 mm, 3,27 g Very  
Fine

**1**



**763** Licinius I AD 308-324. Arelate (Arles) Follis Æ 18 mm, 2,26  
g Fine

**1**



**764** Licinius I AD 308-324. Cyzicus Follis Æ 17 mm, 3,16 g Very Fine

**1**



**765** Licinius I AD 308-324. Heraclea Follis Æ 20 mm, 3,62 g Good Very Fine

**1**



**766** Licinius I AD 308-324. Nicomedia Follis Æ silvered 20 mm, 3,56 g Good Very Fine

**1**



**767** Licinius I AD 308-324. Nicomedia Follis Æ silvered 20 mm, 3,47 g Nearly Extremely Fine

**1**



**768** Licinius I AD 308-324. Nicomedia Follis Æ 23 mm, 2,90 g Nearly Very Fine

**1**



**769** Licinius I AD 308-324. Nicomedia Follis Æ 18 mm, 3,30 g Good Very Fine

**1**



**770** Licinius I AD 308-324. Nicomedia Follis Æ 18 mm, 3,01 g Very Fine

**1**



**771** Licinius I AD 308-324. Rome Follis Æ 22 mm, 3,47 g Very Fine

**1**



**772** Licinius I AD 308-324. Siscia Follis Æ 24 mm, 3,10 g Very Fine

**1**



**773** Licinius I AD 308-324. Siscia Follis Æ 22 mm, 3,52 g Very Fine

**1**



**774** Licinius I AD 308-324. Treveri Follis Æ 20 mm, 3,28 g Very Fine

**1**



**775** Licinius I, with Licinius II as Caesar AD 308-324. Nicomedia Follis Æ 22 mm, 3,74 g Fine

**1**



**776** Maximinus II Daia AD 310-313. Antioch Follis Æ 21 mm, 4,86 g Good Very Fine

**1**



**777** Maximinus II Daia AD 310-313. Antioch Follis Æ 22 mm, 5,32 g Good Very Fine

**1**



**778** Maximinus II Daia AD 310-313. Nicomedia Follis Æ 23 mm, 5,41 g Very Fine

**1**



**779** Maximinus II Daia AD 310-313. Ostia Follis Æ 20 mm, 3,72 g Good Fine

**1**



**780** Crispus, as Caesar AD 316-326. Antioch Follis Æ 20 mm, 3,92 g Nearly Extremely Fine

**1**



**781** Crispus, as Caesar AD 316-326. Aquileia Follis Æ silvered 18 mm, 3,35 g Nearly Extremely Fine

**1**



**782** Crispus, as Caesar AD 316-326. Cyzicus Follis Æ 20 mm, 2,98 g Very Fine

**1**



**783** Crispus, as Caesar AD 316-326. Heraclea Follis Æ 19 mm, 3,31 g Very Fine

**1**



**784** Crispus, as Caesar AD 316-326. Nicomedia Follis Æ 18 mm, 3,26 g Nearly Extremely Fine

**1**





**785** Crispus, as Caesar AD 316-326. Sirmium Follis Æ 19 mm, 2,66 g Nearly Very Fine

**1**



**786** Crispus, as Caesar AD 316-326. Siscia Follis Æ 19 mm, 3,29 g Extremely Fine

**1**



**787** Crispus, as Caesar AD 316-326. Thessaloniki Follis Æ 19 mm, 2,58 g Very Fine

**1**



**788** Constantine II, as Caesar AD 317-337. Antioch Follis Æ 18 mm, 2,65 g Extremely Fine

**1**



**789** Constantine II, as Caesar AD 317-337. Antioch Follis Æ 17 mm, 2,47 g Extremely Fine

**1**



**790** Constantine II, as Caesar AD 317-337. Antioch Follis Æ 17 mm, 2,67 g Very Fine

**1**



**791** Constantine II, as Caesar AD 317-337. Antioch Follis Æ 16 mm, 1,49 g Good Very Fine

**1**



**792** Constantine II, as Caesar AD 317-337. Antioch Follis Æ 18 mm, 1,85 g Nearly Very Fine

**1**



**793** Constantine II, as Caesar AD 317-337. Antioch Follis Æ 17 mm, 2,34 g Very Fine

**1**



**794** Constantine II, as Caesar AD 317-337. Antioch Follis Æ 19 mm, 3,41 g Good Very Fine

**1**



**795** Constantine II, as Caesar AD 317-337. Arelate (Arles) Follis Æ 22 mm, 2,96 g Very Fine

**1**



**796** Constantine II, as Caesar AD 317-337. Constantinople Follis Æ 19 mm, 2,51 g Very Fine

**1**



**797** Constantine II, as Caesar AD 317-337. Cyzicus Follis Æ silvered 19 mm, 3,33 g Good Very Fine

**1**



**798** Constantine II, as Caesar AD 317-337. Cyzicus Follis Æ 17 mm, 2,29 g Very Fine

**1**



**799** Constantine II, as Caesar AD 317-337. Cyzicus Follis Æ 16 mm, 1,01 g Very Fine

**1**



**800** Constantine II, as Caesar AD 317-337. Cyzicus Follis Æ 17 mm, 2,47 g Nearly Very Fine

**1**



**801** Constantine II, as Caesar AD 317-337. Heraclea Follis Æ silvered 18 mm, 2,90 g Very Fine

**1**



**802** Constantine II, as Caesar AD 317-337. Nicomedia Follis Æ 16 mm, 1,67 g Very Fine

**1**



**803** Constantine II, as Caesar AD 317-337. Nicomedia Follis Æ 18 mm, 2,01 g Very Fine

**1**



**804** Constantine II, as Caesar AD 317-337. Nicomedia Follis Æ 18 mm, 2,37 g Nearly Very Fine

**1**



**805** Constantine II, as Caesar AD 317-337. Thessaloniki Follis Æ 20 mm, 3,56 g Very Fine

**1**



**806** Constantine II, as Caesar AD 317-337. Thessaloniki Follis Æ  
19 mm, 1,78 g Very Fine

**1**



**807** Constantine II, as Caesar AD 317-337. Thessaloniki Follis Æ  
18 mm, 2,40 g Very Fine

**1**



**808** Constantine II, as Caesar AD 317-337. Thessaloniki Follis Æ  
18 mm, 3,27 g Good Very Fine

**1**



**809** Constantine II, as Caesar AD 317-337. Thessaloniki Follis Æ  
20 mm, 2,86 g Very Fine

**1**



**810** Constantine II, as Caesar AD 317-337. Thessaloniki Follis Æ  
18 mm, 2,95 g Very Fine

**1**



**811** Licinius II, as Caesar AD 317-324. Alexandria Follis Æ 21  
mm, 3,06 g Very Fine

**1**



**812** Licinius II, as Caesar AD 317-324. Antioch Follis Æ 19 mm,  
4,34 g Good Very Fine

**1**





**813** Licinius II, as Caesar AD 317-324. Aquileia Follis Æ 19 mm, 3,31 g Very Fine

**1**



**814** Licinius II, as Caesar AD 317-324. Heraclea Follis Æ 19 mm, 2,43 g Very Fine

**1**



**815** Licinius II, as Caesar AD 317-324. Nicomedia Follis Æ silvered 17 mm, 2,72 g Nearly Extremely Fine

**1**



**816** Helena, Augusta AD 324-329. Constantinople Follis Æ 16 mm, 1,08 g Nearly Very Fine

**1**



**817** Helena, Augusta AD 324-329. Heraclea Follis Æ 18 mm, 3,28 g Good Fine

**1**



**818** Helena, Augusta AD 324-329. Siscia Follis Æ 19 mm, 2,62 g Nearly Very Fine

**1**



**819** City Commemoratives AD 330-354. Alexandria Follis Æ 17 mm, 2,29 g Very Fine

**1**



**820** City Commemoratives AD 330-354. Alexandria Follis Æ 19 mm, 2,53 g Very Fine

**1**



**821** City Commemoratives AD 330-354. Alexandria Follis Æ 18 mm, 2,89 g Nearly Extremely Fine

**1**



**822** City Commemoratives AD 330-354. Alexandria Follis Æ 17 mm, 3,38 g Nearly Extremely Fine

**1**



**823** City Commemoratives AD 330-354. Antioch Follis Æ 17 mm, 3,04 g Nearly Extremely Fine

**1**



**824** City Commemoratives AD 330-354. Antioch Follis Æ 18 mm, 2,60 g Good Very Fine

**1**



**825** City Commemoratives AD 330-354. Contemporary barbaric imitation Follis Æ 17 mm, 3,34 g Nearly Very Fine

**1**



**826** City Commemoratives AD 330-354. Cyzicus Follis Æ 18 mm, 2,61 g Very Fine

**1**



**827** City Commemoratives AD 330-354. Cyzicus Follis Æ 18 mm, 1,99 g Very Fine

**1**



**828** City Commemoratives AD 330-354. Cyzicus Follis Æ 20 mm, 2,61 g Nearly Very Fine

**1**



**829** City Commemoratives AD 330-354. Cyzicus Follis Æ 19 mm, 2,51 g Good Very Fine

**1**



**830** City Commemoratives AD 330-354. Siscia Follis Æ 18 mm, 2,77 g Good Very Fine

**1**



**831** City Commemoratives AD 330-354. Thessaloniki Follis Æ 16 mm, 1,91 g Very Fine

**1**



**832** Constans, as Caesar AD 333-337. Alexandria Follis Æ 18 mm, 3,51 g Good Very Fine

**1**



**833** Constans, as Caesar AD 333-337. Antioch Follis Æ 19 mm, 2,00 g Good Very Fine

**1**



**834** Constans, as Caesar AD 333-337. Cyzicus Follis Æ 15 mm, 1,48 g Very Fine

**1**



**835** Delmatus, as Caesar AD 335-337. Siscia Follis Æ 16 mm, 1,62 g Fine

**1**



**836** Delmatus, as Caesar AD 335-337. Siscia Follis Æ 16 mm, 1,38 g Good Very Fine

**1**



**837** Constans AD 337-350. Alexandria Follis Æ 15 mm, 1,59 g Nearly Very Fine

**1**



**838** Constans AD 337-350. Alexandria Follis Æ 15 mm, 1,29 g Very Fine

**1**



**839** Constans AD 337-350. Antioch Follis Æ 15 mm, 1,39 g Good Very Fine

**1**



**840** Constans AD 337-350. Antioch Follis Æ 17 mm, 1,48 g Very Fine

**1**





**841** Constans AD 337-350. Constantinople Follis Æ 16 mm, 1,42 g Good Fine

**1**



**842** Constans AD 337-350. Cyzicus Follis Æ 16 mm, 1,90 g Very Fine

**1**



**843** Constans AD 337-350. Cyzicus Follis Æ 14 mm, 1,52 g Good Very Fine

**1**



**844** Constans AD 337-350. Nicomedia Follis Æ 15 mm, 2,02 g Very Fine

**1**



**845** Constans AD 337-350. Rome Follis 22 mm, 4,83 g Very Fine

**1**



**846** Constans AD 337-350. Thessaloniki Follis Æ 17 mm, 1,76 g Very Fine

**1**



**847** Constantine II AD 337-340. Antioch Follis Æ 15 mm, 1,30 g Good Very Fine

**1**



**848** Constantine II AD 337-340. Rome Follis Æ 19 mm, 2,36 g  
Very Fine

**1**



**849** Constantius II, as Caesar AD 337-347. Alexandria Follis Æ  
19 mm, 3,26 g Very Fine

**1**



**850** Constantius II, as Caesar AD 337-347. Antioch Follis Æ 17  
mm, 2,64 g Good Very Fine

**1**



**851** Constantius II, as Caesar AD 337-347. Constantinople Follis  
Æ 19 mm, 2,43 g Very Fine

**1**



**852** Constantius II, as Caesar AD 337-347. Constantinople Follis  
Æ 19 mm, 2,13 g Very Fine

**1**



**853** Constantius II, as Caesar AD 337-347. Cyzicus Follis Æ 18  
mm, 2,11 g Very Fine

**1**



**854** Constantius II, as Caesar AD 337-347. Cyzicus Follis Æ 19  
mm, 2,46 g Nearly Very Fine

**1**



**855** Constantius II, as Caesar AD 337-347. Cyzicus Follis Æ 20 mm, 2,86 g Very Fine

**1**



**856** Constantius II, as Caesar AD 337-347. Heraclea Follis Æ 19 mm, 2,77 g Very Fine

**1**



**857** Constantius II, as Caesar AD 337-347. Nicomedia Follis Æ 17 mm, 2,05 g Nearly Very Fine

**1**



**858** Constantius II, as Caesar AD 337-347. Nicomedia Follis Æ 19 mm, 2,38 g Very Fine

**1**



**859** Constantius II, as Caesar AD 337-347. Thessaloniki Follis Æ 18 mm, 2,72 g Nearly Very Fine

**1**



**860** Divus Constantine I AD 337. Alexandria Follis Æ 15 mm, 1,51 g Very Fine

**1**



**861** Divus Constantine I AD 337. Antioch Follis Æ 15 mm, 1,73 g Very Fine

**1**



**862** Divus Constantine I AD 337. Antioch Follis Æ 16 mm, 1,49 g  
Very Fine

**1**



**863** Divus Constantine I AD 337. Antioch Follis Æ 13 mm, 1,39 g  
Very Fine

**1**



**864** Divus Constantine I AD 337. Antioch Follis Æ 14 mm, 1,52 g  
Very Fine

**1**



**865** Divus Constantine I AD 337. Constantinople Follis Æ 15  
mm, 1,77 g Very Fine

**1**



**866** Constantius II AD 347-361. Alexandria Follis Æ 15 mm, 1,82  
g Nearly Very Fine

**1**



**867** Constantius II AD 347-361. Alexandria Follis Æ 15 mm, 1,46  
g Nearly Very Fine

**1**



**868** Constantius II AD 347-361. Alexandria Follis Æ 18 mm, 2,82  
g Good Very Fine

**1**





**869** Constantius II AD 347-361. Alexandria Follis Æ 17 mm, 2,05 g Very Fine

**1**



**870** Constantius II AD 347-361. Antioch Follis Æ 16 mm, 1,83 g Very Fine

**1**



**871** Constantius II AD 347-361. Antioch Follis Æ 14 mm, 1,36 g Very Fine

**1**



**872** Constantius II AD 347-361. Antioch Follis Æ 14 mm, 2,48 g Good Very Fine

**1**



**873** Constantius II AD 347-361. Antioch Follis Æ 15 mm, 2,30 g Good Very Fine

**1**



**874** Constantius II AD 347-361. Antioch Follis Æ 15 mm, 2,16 g Good Very Fine

**1**



**875** Constantius II AD 347-361. Antioch Follis Æ 16 mm, 1,71 g Good Very Fine

**1**



**876** Constantius II AD 347-361. Antioch Follis Æ 14 mm, 1,61 g  
Very Fine

**1**



**877** Constantius II AD 347-361. Antioch Follis Æ 15 mm, 1,45 g  
Good Very Fine

**1**



**878** Constantius II AD 347-361. Antioch Follis Æ 16 mm, 1,83 g  
Very Fine

**1**



**879** Constantius II AD 347-361. Arelate (Arles) Follis Æ 23 mm,  
3,85 g Very Fine

**1**



**880** Constantius II AD 347-361. Constantinople Follis Æ 24 mm,  
4,83 g Good Fine

**1**



**881** Constantius II AD 347-361. Constantinople Follis Æ 20 mm,  
2,98 g Very Fine

**1**



**882** Constantius II AD 347-361. Constantinople Follis Æ 15 mm,  
2,00 g Very Fine

**1**



**883** Constantius II AD 347-361. Cyzicus Follis Æ 24 mm, 4,27 g  
Nearly Very Fine

**1**



**884** Constantius II AD 347-361. Cyzicus Follis Æ 16 mm, 1,56 g  
Very Fine

**1**



**885** Constantius II AD 347-361. Nicomedia Follis Æ 17 mm, 2,62 g  
Very Fine

**1**



**886** Constantius II AD 347-361. Rome Follis Æ 14 mm, 1,43 g  
Good Very Fine

**1**



**887** Constantius II AD 347-361. Uncertain mint, probably Constantinople Follis Æ 21 mm, 3,14 g  
Good Fine

**1**



**888** Decentius, as Caesar AD 350-353. Lugdunum Follis Æ 23 mm, 4,79 g  
Very Fine

**1**



**889** Magnentius AD 350-353. Treveri Follis Æ 22 mm, 4,96 g  
Very Fine

**1**



**890** Constantius Gallus, Caesar AD 351-354. Alexandria Follis Æ  
17 mm, 2,94 g Very Fine

**1**



**891** Constantius Gallus, Caesar AD 351-354. Alexandria Follis Æ  
18 mm, 2,62 g Very Fine

**1**



**892** Constantius Gallus, Caesar AD 351-354. Sirmium Follis Æ  
18 mm, 2,49 g Very Fine

**1**



**893** Constantius Gallus, Caesar AD 351-354. Uncertain mint  
Follis Æ 21 mm, 2,99 g Good Fine

**1**



**894** Julian II Apostate AD 360-363. Heraclea Follis Æ 20 mm,  
3,22 g Very Fine

**1**



**895** Julian II Apostate AD 360-363. Nicomedia Double Maiorina  
Æ 28 mm, 7,43 g Fine

**1**



**896** Julian II Apostate AD 360-363. Sirmium Follis Æ 19 mm,  
3,45 g Nearly Very Fine

**1**





**897** Jovian AD 363-364. Rome Follis Æ 19 mm, 2,82 g Good Fine **1**



**898** Jovian AD 363-364. Sirmium Follis Æ 20 mm, 3,08 g Very Fine **1**



**899** Valens AD 364-378. Constantinople Follis Æ 17 mm, 2,26 g Very Fine **1**



**900** Valens AD 364-378. Treveri Siliqua AR 18 mm, 1,75 g Very Fine **1**



**901** Valentinian I AD 364-375. Follis Æ 13 mm, 1,18 g Fine **1**



**902** Procopius AD 365-366. Constantinople Follis Æ 18 mm, 2,03 g Fine **1**



**903** Gratian AD 375-383. Thessaloniki Follis Æ 25 mm, 4,81 g Very Fine **1**



**904** Valentinian II AD 375-392. Contemporary barbaric imitation Follis Æ 21 mm, 7,30 g Very Fine

**1**



**905** Valentinian II AD 375-392. Thessaloniki Follis Æ 21 mm, 6,15 g Very Fine

**1**



**906** Theodosius I AD 379-395. Antioch Follis Æ 21 mm, 4,80 g Very Fine

**1**



**907** Theodosius I AD 379-395. Thessaloniki Follis Æ 22 mm, 4,58 g Nearly Very Fine

**1**



**908** Arcadius AD 383-408. Constantinople Follis Æ 24 mm, 4,36 g Nearly Very Fine

**1**



**909** Arcadius AD 383-408. Cyzicus Follis Æ 17 mm, 1,88 g Very Fine

**1**



**910** Arcadius AD 383-408. Cyzicus Follis Æ 16 mm, 1,69 g Very Fine

**1**



**911** Arcadius AD 383-408. Siscia Follis Æ 18 mm, 2,64 g Very Fine

**1**



**912** Magnus Maximus AD 383-388. Follis Æ 23 mm, 4,98 g Fine

**1**



**913** Anastasius I AD 491-518. Constantinople Half Follis or 20 Nummi Æ 28 mm, 10,53 g Good Fine

**1**



**914** Justinian I AD 527-565. Constantinople Decanummium Æ 14 mm, 2,05 g Very Fine

**1**



**915** Justinian I AD 527-565. Constantinople Decanummium Æ 20 mm, 3,32 g Very Fine

**1**



**916** Justinian I AD 527-565. Nikomedia Follis or 40 Nummi Æ 32 mm, 14,50 g Very Fine

**1**



**917** Justinian I AD 527-565. Nikomedia Follis or 40 Nummi Æ 33 mm, 16,51 g Very Fine

**1**



**918** Justinian I AD 527-565. Theoupolis (Antioch) Follis or 40 Nummi Æ 31 mm, 13,44 g Very Fine

**1**



**919** Justin II and Sophia AD 565-578. Nikomedia Follis or 40 Nummi Æ 31 mm, 12,77 g Very Fine

**1**



**920** Justin II and Sophia AD 565-578. Nikomedia Follis or 40 Nummi Æ 30 mm, 14,33 g Very Fine

**1**



**921** Justin II and Sophia AD 565-578. Nikomedia Half Follis or 20 Nummi Æ 26 mm, 7,39 g Nearly Very Fine

**1**



**922** Maurice Tiberius AD 582-602. Constantinople Half Follis or 20 Nummi Æ 25 mm, 6,56 g Very Fine

**1**



**923** Maurice Tiberius AD 582-602. Constantinople Decanummium Æ 15 mm, 3,42 g Fine

**1**



**924** Maurice Tiberius AD 582-602. Theoupolis (Antioch) Follis or 40 Nummi Æ 29 mm, 12,12 g Nearly Very Fine

**1**





**925** Maurice Tiberius AD 582-602. Theoupolis (Antioch) Follis or 40 Nummi Æ 30 mm, 11,52 g Very Fine

**1**



**926** Maurice Tiberius AD 582-602. Theoupolis (Antioch) Follis or 40 Nummi Æ 28 mm, 10,83 g Nearly Very Fine

**1**



**927** Phocas AD 602-610. Cyzicus Half Follis or 20 Nummi Æ 26 mm, 6,11 g Very Fine

**1**



**928** Phocas AD 602-610. Theoupolis (Antioch) Pentanummium Æ 14 mm, 1,16 g Nearly Extremely Fine

**1**



**929** Phocas, with Leontia AD 602-610. Cyzicus Follis or 40 Nummi Æ 32 mm, 12,38 g Good Fine

**1**



**930** Heraclius with Heraclius Constantine AD 610-641. Thessalonica Follis or 40 Nummi Æ 31 mm, 10,39 g Very Fine

**1**



**931** Constans II AD 641-668. Syracuse Follis or 40 Nummi Æ 31 mm, 15,84 g Fine, over struck

**1**



**932** Constans II, with Constantine IV AD 641-668.  
Constantinople Follis or 40 Nummi Æ 21 mm, 2,93 g Very Fine

**1**



**933** Leo V the Armenian, with Constantine AD 813-820.  
Constantinople Follis or 40 Nummi Æ 25 mm, 6,77 g Nearly Very Fine

**1**



**934** Leo V the Armenian, with Constantine AD 813-820.  
Constantinople Follis or 40 Nummi Æ 24 mm, 5,54 g Very Fine

**1**



**935** Leo V the Armenian, with Constantine AD 813-820.  
Syracuse Follis Æ 24 mm, 3,82 g Very Fine

**1**



**936** Leo V the Armenian, with Constantine AD 813-820.  
Syracuse Follis Æ 20 mm, 3,17 g Nearly Very Fine

**1**



**937** Theophilus AD 829-842. Constantinople Follis Æ 30 mm,  
8,96 g Very Fine

**1**



**938** Basil I, with Leo VI and Constantine VII AD 867-886.  
Constantinople Follis Æ 25 mm, 6,64 g Very Fine

**1**



**939** Leo VI the Wise AD 886-912. Constantinople Follis Æ 27 mm, 5,51 g Fine

**1**



**940** Leo VI the Wise AD 886-912. Constantinople Follis Æ 25 mm, 6,66 g Nearly Very Fine

**1**



**941** Constantine VII, Porphyrogenitus AD 913-959. Constantinople Follis Æ 30 mm, 9,18 g Good Fine

**1**



**942** Constantine VII, Porphyrogenitus AD 913-959. Constantinople Follis Æ 27 mm, 6,38 g Good Fine

**1**



**943** Constantine VII, Porphyrogenitus AD 913-959. Constantinople Follis Æ 26 mm, 6,82 g Very Fine

**1**



**944** Constantine VII with Romanus II AD 945-959. Constantinople Follis Æ 27 mm, 3,70 g Fine

**1**



**945** John I Tzimiskes AD 969-976. Constantinople Miliarion AR 23 mm, 2,29 g Very Fine

**1**



**946** Attributed to Basil II and Constantine VIII AD 976-1028.  
Constantinople Anonymous Follis Æ 29 mm, 10,85 g Very Fine

**1**



**947** Attributed to Basil II and Constantine VIII AD 976-1028.  
Constantinople Anonymous Follis Æ 30 mm, 12,24 g Very Fine

**1**



**948** Basil II Bulgaroktonos, with Constantine VIII AD 976-1025.  
Constantinople Anonymous Follis Æ 27 mm, 7,28 g Fine

**1**



**949** Romanus III Argyrus AD 1028-1034. Constantinople  
Anonymous Follis Æ 31 mm, 10,68 g Nearly Very Fine

**1**



**950** Michael IV AD 1034-1041. Constantinople Anonymous Follis  
Æ 32 mm, 7,79 g Fine

**1**



**951** Michael IV AD 1034-1041. Constantinople Anonymous Follis  
Æ 31 mm, 9,63 g Nearly Very Fine

**1**



**952** Constantine X Ducas and Eudocia AD 1059-1067.  
Constantinople Follis Æ 30 mm, 8,77 g Very Fine

**1**





**953** Romanus IV Diogenes AD 1068-1071. Constantinople Anonymous Follis Æ 30 mm, 6,78 g Very Fine

**1**



**954** Romanus IV Diogenes AD 1068-1071. Constantinople Anonymous Follis Æ 26 mm, 7,22 g Fine

**1**



**955** Michael VII Ducas AD 1071-1078. Constantinople Follis Æ 27 mm, 8,00 g Nearly Very Fine

**1**



**956** Michael VII Ducas, with Maria AD 1071-1078. Constantinople Miliaresion AR 20 mm, 1,42 g Nearly Very Fine

**1**



**957** Nicephorus III Botaniates AD 1078-1081. Constantinople Anonymous Follis Æ 25 mm, 5,49 g Very Fine

**1**



**958** Alexius I Comnenus AD 1081-1118. Constantinople Aspron Trachy BI 26 mm, 3,32 g Fine

**1**



**959** Alexius I Comnenus AD 1081-1118. Philippopolis Aspron Trachy BI 27 mm, 4,21 g Good Fine

**1**



**960** Anonymous (attributed to Michael VII) AD 1081-1092.  
Constantinople Anonymous Follis Æ 28 mm, 6,55 g Fine

**1**



**961** Manuel I Comnenus AD 1143-1180. Constantinople Trachy  
Æ 30 mm, 4,80 g Very Fine

**1**



**962** Manuel I Comnenus AD 1143-1180. Constantinople Trachy  
Æ 27 mm, 2,91 g Very Fine

**1**



**963** Isaac II Angelos AD 1185-1195. Constantinople Trachy Æ 25  
mm, 3,14 g Very Fine

**1**



**964** Isaac II Angelos AD 1185-1195. Thessalonica Tetarteron Æ  
17 mm, 1,93 g Very Fine

**1**



**965** Alexius III Angelus-Comnenus AD 1195-1203.  
Constantinople Trachy Æ 26 mm, 2,63 g Very Fine

**1**



**966** Latin Rulers of Constantinople AD 1204-1261.  
Constantinople Trachy Æ 19 mm, 0,98 g Very Fine

**1**



**967** Latin Rulers of Constantinople AD 1204-1261.  
Constantinople Trachy Æ 24 mm, 2,35 g Very Fine

**1**



**968** Latin Rulers of Constantinople AD 1204-1261.  
Constantinople Trachy Æ 25 mm, 3,52 g Nearly Very Fine

**1**



**969** Manuel I Comnenus, emperor of Trebizond AD 1238-1263.  
Trebizond Asper AR 22 mm, 2,69 g Very Fine

**1**



**970** Theodore II Ducas-Lascaris. Emperor of Nicaea AD 1254-1258.  
Constantinople Trachy Æ 26 mm, 3,92 g Nearly Very Fine

**1**



**971** Michael VIII Palaeologus AD 1261-1282. Constantinople  
Trachy Æ 26 mm, 2,22 g Very Fine

**1**



**972** Michael VIII Palaeologus AD 1261-1282. Constantinople  
Trachy Æ 25 mm, 2,52 g Very Fine

**1**



**973** Andronicus II Palaeologus AD 1282-1328. Thessalonica  
Trachy Æ 25 mm, 2,06 g Very Fine, holed

**1**



**974** Andronicus II Palaeologus, with Michael IX AD 1282-1328.  
Constantinople Basilikon AR 21 mm, 2,01 g Nearly Very Fine

**1**



**975** Andronicus II Palaeologus, with Michael IX AD 1282-1328.  
Constantinople Basilikon AR 21 mm, 2,02 g Nearly Very Fine

**1**



**976** Andronicus II Palaeologus, with Michael IX AD 1282-1328.  
Constantinople Basilikon AR 21 mm, 2,12 g Very Fine

**1**



**977** Andronicus II Palaeologus, with Michael IX AD 1282-1328.  
Constantinople Basilikon AR 22 mm, 2,03 g Very Fine

**1**



**978** Andronicus II Palaeologus, with Michael IX AD 1282-1328.  
Constantinople Basilikon AR 21 mm, 2,06 g Very Fine

**1**



**979** Andronicus II Palaeologus, with Michael IX AD 1282-1328.  
Constantinople Basilikon AR 22 mm, 2,14 g Very Fine

**1**



**980** Andronicus II Palaeologus, with Michael IX AD 1282-1328.  
Constantinople Trachy Æ 16 mm, 0,48 g Very Fine

**1**





**981** Andronicus II Palaeologus, with Michael IX AD 1282-1328.  
Constantinople Trachy Æ 25 mm, 3,22 g Very Fine

**1**



**982** France. Abbey of St. Martin of Tours AD 1150-1200. Denier  
Tournais BI 20 mm, 0,88 g Very Fine

**1**



**983** France. Paris AD 1365. AV Franc à pied. 38 mm, 3,78 g  
Good Extremely Fine

**1**



**984** Hungary. Sigismund von Luxembourg AD 1387-1437. Denár  
AR 13 mm, 0,40 g Good Fine

**1**



**985** Hungary. Sigismund von Luxembourg AD 1387-1437. Denar  
AR 13 mm, 0,41 g Very Fine

**1**



**986** Italy. Venezia (Venice). Jacopo Contarini AD 1275-1280.  
Grosso AR 20 mm, 2,04 g Very Fine

**1**



**987** Italy. Venezia (Venice). Pietro Gradenigo AD 1289-1311.  
Grosso AR 20 mm, 1,97 g Very Fine

**1**



**988** Italy. Ancona circa AD 1300-1400. Denaro BI 15 mm, 0,59 g  
Nearly Very Fine

**1**



**989** Italy. Roma circa AD 1300-1400. Denaro BI 15 mm, 0,58 g  
Very Fine

**1**



**990** Italy. Venezia (Venice). Giovanni Soranzo AD 1312-1328.  
Grosso AR 20 mm, 2,12 g Extremely Fine

**1**



**991** Italy. Venezia (Venice). Francesco Dandolo AD 1329-1339.  
Grosso AR 20 mm, 2,10 g Very Fine

**1**



**992** Italy. Venezia (Venice). Francesco Dandolo AD 1329-1339.  
Soldino AR 16 mm, 0,88 g Very Fine

**1**



**993** Italy. Venezia (Venice). Antonio Venier AD 1382-1400.  
Soldino AR 15 mm, 0,49 g Very Fine

**1**



**994** Bulgaria. Ivan Aleksander AD 1331-1371. Trachy AE 22 mm,  
2,50 g Nearly Very Fine

**1**



**995** Principality of Achaëa. Guillaume I de la Roche AD 1280-1287. Denier Tournois BI 18 mm, 0,71 g Very Fine

**1**



**996** Principality of Achaëa. Gui II de La Roche AD 1287-1308. Denier Tournois BI 19 mm, 0,76 g Very Fine

**1**



**997** Principality of Achaëa. Gui II de La Roche AD 1287-1308. Denier Tournois BI 19 mm, 0,92 g Very Fine

**1**



**998** Principality of Achaëa. Gui II de La Roche AD 1287-1308. Denier Tournois BI 19 mm, 0,95 g Very Fine

**1**



**999** Principality of Achaëa. Florent AD 1289-1297. Denier Tournois BI 19 mm, 0,96 g Very Fine

**1**



**1000** Crusaders. Cyprus. Hugh IV AD 1324-1359. Groš AR 27 mm, 4,56 g Very Fine

**1**



**1001** Crusaders. AD 1500-1550. Denaro Ae 16 mm, 0,87 g Nearly Very Fine

**1**



**1002** Cilician Armenia. Sis. Levon I AD 1198-1219. Tram AR 22 mm, 2,86 g Very Fine

**1**



**1003** Cilician Armenia. Hetoum I, with Zabel AD 1226-1270. Tram AR 23 mm, 2,73 g Very Fine

**1**



**1004** Abbasid. . Dirham AR 26 mm, 2,79 g Very Fine

**1**



**1005** Umayyad. Wasit mint. al-Walid I AH 86-96. Struck AH 87 AR Dirham 28 mm, 2,85 g Good Very Fine

**1**



**1006** Umayyad. Wasit mint. Hisham AH 105-125. Struck AH 123 AR Dirham 25 mm, 2,79 g Good Very Fine

**1**



**1007** Umayyad. Wasit mint. Hisham AH 105-125. Struck AH 124 AR Dirham 24 mm, 2,34 g Nearly Extremely Fine

**1**



**1008** Umayyad. Wasit mint. Hisham AH 105-125. Struck AH 121 AR Dirham 25 mm, 2,74 g Good Very Fine

**1**





**1009** Umayyad. Wasit mint. Hisham AH 105-125. Struck AH 106  
AR Dirham 26 mm, 2,90 g Good Very Fine

**1**



**1010** Umayyad. Wasit mint. Hisham AH 105-125. Struck AH 122  
AR Dirham 23 mm, 2,44 g Good Very Fine

**1**



**1011** Umayyad. Wasit mint. Hisham AH 105-125. Struck AH 125  
AR Dirham 24 mm, 2,88 g Good Very Fine

**1**



**1012** Umayyad. Wasit mint. al-Walid II AH 125-126. Struck AH  
126 AR Dirham 23 mm, 2,08 g Good Very Fine

**1**



**1013** Umayyad. Wasit mint. Marwan II AH 127-132. Struck AH  
130 AR Dirham 24 mm, 2,51 g Good Very Fine

**1**



**1014** Umayyad. Wasit mint. Marwan II AH 127-132. Struck AH  
128 AR Dirham 25 mm, 2,87 g Good Very Fine

**1**



**1015** Abbasid. al-Basra mint. al-Mansur AH 136-158. Struck AH  
147 AR Dirham 24 mm, 2,67 g Good Fine

**1**



**1016** Abbasid. al-Kufa mint. al-Mansur AH 136-158. Struck AH 143 AR Dirham 24 mm, 2,89 g Good Very Fine

**1**



**1017** Abbasid. al-Rayy mint. al-Mansur AH 136-158. Struck AH 147 AR Dirham 25 mm, 2,77 g Good Very Fine

**1**



**1018** Abbasid. Madinat al-Salam mint. al-Mansur AH 136-158. Struck AH 158 AR Dirham 24 mm, 2,82 g Good Very Fine

**1**



**1019** Abbasid. Madinat al-Salam mint. al-Mansur AH 136-158. Struck AH 157 AR Dirham 25 mm, 2,89 g Good Very Fine

**1**



**1020** Abbasid. Madinat al-Salam mint. al-Mansur AH 136-158. Struck AH 155 AR Dirham 25 mm, 2,91 g Good Very Fine

**1**



**1021** Abbasid. Madinat al-Salam mint. al-Mansur AH 136-158. Struck AH 150 AR Dirham 25 mm, 2,82 g Good Very Fine

**1**



**1022** Abbasid. Madinat al-Salam mint. al-Mansur AH 136-158. Struck AH 155 AR Dirham 25 mm, 2,73 g Good Very Fine

**1**



**1023** Abbasid. al-Muhammadiya mint. al-Mahdi AH 158-169.  
Struck AH 162 AR Dirham 25 mm, 2,90 g Good Fine

**1**



**1024** Abbasid. Madinat al-Salam mint. al-Mahdi AH 158-169.  
Struck AH 164 AR Dirham 23 mm, 2,87 g Good Very Fine

**1**



**1025** Abbasid. al-Muhammadiya mint. al-Rashid AH 170-193.  
Struck AH 187 AR Dirham 24 mm, 2,75 g Good Very Fine

**1**



**1026** Abbasid. Madinat al-Salam mint. al-Rashid AH 170-193.  
Struck AH 189 AR Dirham 24 mm, 2,72 g Good Very Fine

**1**



**1027** Abbasid. Madinat al-Salam mint. al-Rashid AH 170-193.  
Struck AH 188 AR Dirham 23 mm, 2,80 g Good Very Fine

**1**



**1028** Abbasid. Madinat al-Salam mint. al-Rashid AH 170-193.  
Struck AH 191 AR Dirham 20 mm, 2,87 g Good Very Fine

**1**



**1029** Abbasid. Madinat al-Salam mint. al-Rashid AH 170-193.  
Struck AH 192 AR Dirham 21 mm, 2,89 g Good Very Fine

**1**



**1030** Abbasid. Madinat Zaranj mint. al-Rashid AH 170-193.  
Struck AH 184 AR Dirham 25 mm, 2,83 g Good Fine

**1**



**1031** Abbasid. Madinat al-Salam mint. Al Amin AH 193-198.  
Struck AH 196 AR Dirham 25 mm, 2,91 g Good Very Fine

**1**



**1032** Abbasid. al-Muhammadiya mint. al-Amin AH 193-198.  
Struck AH 193 AR Dirham 22 mm, 2,91 g Good Very Fine

**1**



**1033** Abbasid. Madinat al-Salam mint. al-Ma'mun AH 194-218.  
Struck AH 207 AR Dirham 25 mm, 2,86 g Good Very Fine

**1**



**1034** Abbasid. Madinat al-Salam mint. al-Mu'tamid AH 256-279.  
Struck AH 263 AR Dirham 24 mm, 2,74 g Good Very Fine

**1**



**1035** Abbasid. Madinat al-Salam mint. al-Mu'tadid AH 279-289.  
Struck AH 281 AR Dirham 23 mm, 3,00 g Good Fine

**1**



**1036** Abbasid. Wasit mint. al-Mu'tadid AH 279-289. Struck AH  
284 AR Dirham 22 mm, 2,75 g Good Very Fine

**1**





**1037** Abbasid. Madinat al-Salam mint. al-Muktafi AH 289-295.  
Struck AH 295 AR Dirham 24 mm, 2,80 g Good Very Fine

**1**



**1038** Abbasid. Madinat al-Salam mint. al-Muktafi AH 289-295.  
Struck AH 295 AR Dirham 23 mm, 3,05 g Good Very Fine

**1**



**1039** Abbasid. al-Kufa mint. al-Muqtadir AH 295-320. Struck AH  
299 AR Dirham 26 mm, 3,21 g Good Very Fine

**1**



**1040** Abbasid. Madinat al-Salam mint. al-Muqtadir AH 295-320.  
Struck AH 311 AR Dirham 26 mm, 3,04 g Good Very Fine

**1**



**1041** Abbasid. Madinat al-Salam mint. al-Muqtadir AH 295-320.  
Struck AH 314 AR Dirham 26 mm, 2,88 g Good Very Fine

**1**



**1042** Abbasid. Madinat al-Salam mint. al-Muqtadir AH 295-320.  
Struck AH 303 AR Dirham 25 mm, 3,64 g Good Very Fine

**1**



**1043** Abbasid. Surra Man Ra'a mint. al-Muqtadir AH 295-320.  
Struck AH 303 AR Dirham 25 mm, 3,11 g Good Very Fine

**1**



**1044** Abbasid. Wasit mint. al-Muqtadir AH 295-320. Struck AH 304 AR Dirham 27 mm, 3,00 g Good Very Fine

**1**



**1045** Abbasid. Madinat al-Salam mint. al-Qahir AH 320-322. Struck AH 321 AR Dirham 25 mm, 3,65 g Good Very Fine

**1**



**1046** Abbasid. al-Rafiqa mint. Al-Radi AH 322-329. Struck AH 327 AR Dirham 25 mm, 3,59 g Good Very Fine

**1**



**1047** Abbasid. Madinat al-Salam mint. Al-Radi AH 322-329. Struck AH 323 AR Dirham 26 mm, 3,87 g Good Very Fine

**1**



**1048** Abbasid. Madinat al-Salam mint. al-Muttaqi AH 329-333. Struck AH 330 AR Dirham 24 mm, 3,20 g Good Very Fine

**1**



**1049** . NM AH 524-668. Muwahhid (Almohad) , Anonymous, ND AR Dirham 23 mm, 1,30 g Good Very Fine

**1**



**1050** . NM AH 524-668. Muwahhid (Almohad) , Anonymous, ND AR Dirham 23 mm, 1,34 g Good Very Fine

**1**



**1051** . NM AH 524-668. Muwahhid (Almohad) , Anonymous, ND  
AR Dirham 23 mm, 1,28 g Good Very Fine

**1**



**1052** . NM AH 524-668. Muwahhid (Almohad) , Anonymous, ND  
AR Dirham 23 mm, 1,35 g Good Very Fine

**1**



**1053** . NM AH 524-668. Muwahhid (Almohad) , Anonymous, ND  
AR Dirham 23 mm, 1,33 g Good Very Fine

**1**



**1054** . NM AH 524-668. Muwahhid (Almohad) , Anonymous, ND  
AR Dirham 24 mm, 1,23 g Good Very Fine

**1**



**1055** . NM AH 524-668. Muwahhid (Almohad) , Anonymous, ND  
AR Dirham 20 mm, 1,48 g Good Very Fine

**1**



**1056** . NM AH 524-668. Muwahhid (Almohad) , Anonymous, ND  
AR Dirham 22 mm, 1,41 g Good Very Fine

**1**



**1057** . NM AH 524-668. Muwahhid (Almohad) , Anonymous, ND  
AR Dirham 23 mm, 1,35 g Good Very Fine

**1**



**1058** . NM AH 524-668. Muwahhid (Almohad) , Anonymous, ND  
AR Dirham 24 mm, 1,13 g Good Very Fine

**1**



**1059** . NM AH 524-668. Muwahhid (Almohad) , Anonymous, ND  
AR Dirham 23 mm, 1,31 g Good Very Fine

**1**



**1060** . NM AH 524-668. Muwahhid (Almohad) , Anonymous, ND  
AR Dirham 23 mm, 1,32 g Good Very Fine

**1**



**1061** . NM AH 524-668. Muwahhid (Almohad) , Anonymous, ND  
AR Dirham 21 mm, 1,36 g Good Very Fine

**1**



**1062** . NM AH 524-668. Muwahhid (Almohad) , Anonymous, ND  
AR Dirham 21 mm, 1,45 g Good Very Fine

**1**



**1063** . NM AH 524-668. Muwahhid (Almohad) , Anonymous, ND  
AR Dirham 24 mm, 1,32 g Good Very Fine

**1**



**1064** . NM AH 524-668. Muwahhid (Almohad) , Anonymous, ND  
AR Dirham 22 mm, 1,38 g Good Very Fine

**1**





**1065** . NM AH 524-668. Muwahhid (Almohad) , Anonymous, ND  
AR Dirham 21 mm, 1,32 g Good Very Fine

**1**



**1066** . NM AH 524-668. Muwahhid (Almohad) , Anonymous, ND  
AR Dirham 22 mm, 1,37 g Good Very Fine

**1**



**1067** . NM AH 524-668. Muwahhid (Almohad) , Anonymous, ND  
AR Dirham 23 mm, 1,28 g Good Very Fine

**1**



**1068** . NM AH 524-668. Muwahhid (Almohad) , Anonymous, ND  
AR Dirham 22 mm, 1,45 g Good Very Fine

**1**



**1069** . AH 776-784. Jalayrid , Sultan Husayn I ( Jalal al-Din) AR  
Dinar 16 mm, 1,40 g Good Fine

**1**



**1070** . AH 776-784. Jalayrid , Sultan Husayn I ( Jalal al-Din) AR 2  
Dinar 20 mm, 2,87 g Good Fine

**1**



**1071** . AH 776-784. Jalayrid , Sultan Husayn I ( Jalal al-Din) AR  
Dinar 15 mm, 1,42 g Good Very Fine

**1**



**1072** . AH 776-784. Jalayrid , Sultan Husayn I ( Jalal al-Din) AR 2  
Dinar 18 mm, 2,81 g Good Very Fine

**1**



**1073** . AH 776-784. Jalayrid , Sultan Husayn I ( Jalal al-Din) AR  
Dinar 15 mm, 1,40 g Good Very Fine

**1**



**1074** . AH 776-784. Jalayrid , Sultan Husayn I ( Jalal al-Din) AR  
Dinar 17 mm, 1,36 g Good Very Fine

**1**



**1075** . AH 776-784. Jalayrid , Sultan Husayn I ( Jalal al-Din) AR  
Dinar 16 mm, 1,39 g Good Very Fine

**1**



**1076** . Ani mint AH 776-784. Jalayrid , Sultan Husayn I ( Jalal al-  
Din) AR Dinar 17 mm, 1,28 g Good Very Fine

**1**



**1077** . Maragha mint AH 776-784. Jalayrid , Sultan Husayn I (   
Jalal al-Din) AR Dinar 16 mm, 1,45 g Good Very Fine

**1**



**1078** . Maragha mint AH 776-784. Jalayrid , Sultan Husayn I (   
Jalal al-Din) AR Dinar 18 mm, 1,42 g Good Very Fine

**1**



**1079** . Nakhjavan mint AH 776-784. Jalayrid , Sultan Husayn I ( Jalal al-Din) AR Dinar 18 mm, 1,44 g Good Very Fine

**1**



**1080** . Tabriz mint AH 776-784. Jalayrid , Sultan Husayn I ( Jalal al-Din) AR Dinar 15 mm, 1,42 g Good Very Fine

**1**



**1081** . Tabriz mint AH 776-784. Jalayrid , Sultan Husayn I ( Jalal al-Din) AR Dinar 16 mm, 1,38 g Good Fine

**1**



**1082** . Tabriz mint AH 776-784. Jalayrid , Sultan Husayn I ( Jalal al-Din) AR Dinar 16 mm, 1,41 g Good Very Fine

**1**



**1083** . Tabriz mint AH 776-784. Jalayrid , Sultan Husayn I ( Jalal al-Din) AR Dinar 16 mm, 1,43 g Good Very Fine

**1**



**1084** . Tabriz mint AH 776-784. Jalayrid , Sultan Husayn I ( Jalal al-Din) AR Dinar 16 mm, 1,41 g Good Very Fine

**1**



**1085** . Tabriz mint AH 776-784. Jalayrid , Sultan Husayn I ( Jalal al-Din) AR Dinar 15 mm, 1,41 g Good Fine

**1**



**1086** . Tabriz mint AH 776-784. Jalayrid , Sultan Husayn I ( Jalal al-Din) AR Dinar 15 mm, 1,41 g Good Very Fine

**1**



**1087** . Tabriz mint AH 776-784. Jalayrid , Sultan Husayn I ( Jalal al-Din) AR Dinar 18 mm, 1,37 g Good Very Fine

**1**



**1088** Seljuq of Rum. . Fals Æ 18 mm, 1,72 g Very Fine

**1**



**1089** Seljuq of Rum. . Fals Æ 16 mm, 1,31 g Very Fine

**1**



**1090** Seljuq of Rum. . Fals Æ 19 mm, 1,16 g Very Fine

**1**



**1091** Seljuq of Rum. . Fals Æ 18 mm, 1,08 g Good Fine

**1**



**1092** Seljuq of Rum. . Fals Æ 17 mm, 1,58 g Very Fine

**1**





**1093** Seljuq of Rum. . Fals Æ 16 mm, 1,23 g Very Fine

**1**



**1094** Seljuq of Rum. . Fals Æ 18 mm, 3,01 g Very Fine

**1**



**1095** Fatimids. AH 296-567. AR Dirham 15 mm, 0,65 g Good Fine

**1**



**1096** Fatimids. AH 296-567. AR 1/4 Dirham 14 mm, 0,62 g Good Fine

**1**



**1097** Fatimids. AH 296-567. AR 1/2 Dirham 17 mm, 1,55 g Good Fine

**1**



**1098** Fatimids. AH 296-567. AR 1/4 Dirham 14 mm, 0,62 g Good Fine

**1**



**1099** Fatimids. AH 296-567. AR 1/4 Dirham 15 mm, 0,61 g Good Fine

**1**



**1100** Fatimids. AH 296-567. AR 1/4 Dirham 15 mm, 0,61 g Good Fine

**1**



**1101** Fatimids. AH 296-567. AR 1/4 Dirham 15 mm, 0,60 g Good Fine

**1**



**1102** Fatimids. AH 296-567. AR 1/4 Dirham 15 mm, 0,63 g Good Fine

**1**



**1103** Fatimids. AH 296-567. AR 1/2 Dirham 17 mm, 0,81 g Good Fine

**1**



**1104** Fatimids. AH 296-567. AR 1/4 Dirham 14 mm, 0,59 g Good Fine

**1**



**1105** Fatimids. AH 296-567. AR 1/4 Dirham 15 mm, 0,63 g Good Fine

**1**



**1106** Fatimids. AH 296-567. AR 1/4 Dirham 12 mm, 0,63 g Good Fine

**1**



**1107** Fatimids. AH 296-567. AR 1/2 Dirham 18 mm, 0,84 g Good Fine

**1**



**1108** Fatimids. AH 296-567. AR 1/4 Dirham 15 mm, 0,78 g Good Very Fine

**1**



**1109** Fatimids. AH 296-567. AR 1/2 Dirham 15 mm, 0,43 g Good Fine

**1**



**1110** Fatimids. AH 296-567. AR 1/2 Dirham 17 mm, 0,69 g Good Fine

**1**



**1111** Fatimids. AH 296-567. AR 1/2 Dirham 18 mm, 0,95 g Good Fine

**1**



**1112** Fatimids. AH 296-567. AR 1/4 Dirham 15 mm, 0,61 g Good Fine

**1**



**1113** Fatimids. AH 296-567. AR 1/4 Dirham 15 mm, 0,61 g Good Fine

**1**



**1114** North Africa. Almohads AH 550-670. Square Dirham AR 20 mm, 1,17 g Very Fine

**1**



**1115** North Africa. Almoravids AH 550-670. Square Dirham AR 19 mm, 1,40 g Good Fine

**1**



**1116** North Africa. Almoravids AH 550-670. Square Dirham AR 18 mm, 1,29 g Good Fine

**1**



**1117** Anatolia and Al-Jazirah (Post-Seljuk). Artuqids (Mardin). Najm al-Din Alpi AH 547-572. Dirhem Æ 32 mm, 9,39 g Fine

**1**



**1118** Anatolia and Al-Jazirah (Post-Seljuk). Artuqids (Mardin). Najm al-Din Alpi AH 547-572. Dirhem Æ 32 mm, 11,18 g Fine, holed

**1**



**1119** Anatolia and Al-Jazirah (Post-Seljuk). Artuqids (Mardin). Husam al-Din Yuluq Arslan AH 580-597. Dirhem Æ 32 mm, 14,17 g Good Fine

**1**



**1120** Anatolia and Al-Jazirah (Post-Seljuk). Artuqids (Mardin). Nasir al-Din Artuq Arslan AH 597-637. Dirhem Æ 29 mm, 4,65 g Very Fine

**1**



**1121** Saffarid. Fars mint . Amr B. Al Layth AH 265-288. Struck AH 279 AR Dirham 24 mm, 3,25 g Good Fine

**1**





**1122** Saffarid. Fars mint AH 288-296. Tahir b. Muhammad, Struck AH 292 AR Dirham 27 mm, 2,95 g Good Very Fine

**1**



**1123** Buwahyhid. Shiraz mint. Adud Al Dawla Abu Shuja' AH 341-372. Struck AH 363 AR Dirham 29 mm, 4,51 g Good Very Fine

**1**



**1124** Zengids Atabegs of Mosul. Al-Mawsil (Mosul) mint AH 607-615. Izz al-Din Mas'ud II Dinar AV 27 mm, 3,94 g Good Fine

**1**



**1125** Samanids. al-Shash mint. Nasr II b. Ahmad AH 301-331. Struck AH 311 AR Dirham 28 mm, 3,31 g Good Very Fine

**1**



**1126** Ayyubids. Mayyafariqin mint. Mayyafariqin and Jabal Sinjar, al-'Adil I Sayf al-Din Ahmad AH 589-596. Dirhem Æ 29 mm, 11,29 g Very Fine

**1**



**1127** Ayyubids. Mayyafariqin mint. Mayyafariqin and Jabal Sinjar, al-'Adil I Sayf al-Din Ahmad AH 589-596. Dirhem Æ 28 mm, 12,57 g Fine

**1**



**1128** Begtiginids. Irbil. Muzaffar ad-Din Kökburi AH 563-630. Dirhem Æ 30 mm, 9,48 g Very Fine

**1**



**1129** Greek. Tessaera Pb 14 mm, 1,24 g Very Fine

**1**



**1130** Greek. Tessaera Pb 25 mm, 5,37 g Very Fine

**1**



**1131** Byzantine. Weight Æ 18 mm, 4,30 g Very Fine

**1**



**1132** Byzantine. Seal Pb 31 mm, 13,88 g Fine, broken

**1**



**1133** . circa AD 1970-1990. Medal AR 24 mm, 5,03 g Nearly Uncirculated

**1**



**1134** . AD 1977. 2 Francs 26 mm, 2,21 g Nearly Uncirculated

**1**



**1135** Albania. AD 1926. 1/4 Leku 1926 22 mm, 4 g Very Fine

**1**



**1136** Australia. AD 1960. 6 Pence AR 19 mm, 2,84 g Extremely Fine

**1**



**1137** Australia. AD 1963. 3 Pence AR 16 mm, 1,44 g Extremely Fine

**1**



**1138** Australia. AD 1964. 3 Pence AR 16 mm, 1,40 g Nearly Uncirculated

**1**



**1139** Australia. AD 1965. 25 Cents AR 23 mm, 5,81 g Good Extremely Fine

**1**



**1140** Australia. AD 1966. 50 Pence AR 31 mm, 13,37 g Extremely Fine

**1**



**1141** Australia. AD 1967. 25 Cents AR 24 mm, 5,86 g Nearly Uncirculated

**1**



**1142** Australia. AD 1967. 10 Pence AR 17 mm, 2,32 g Good Extremely Fine

**1**



**1143** Australia. AD 1977. Silver Jubilee 50 Cents 1977 33 mm, 15,6 g Mint State

**1**



**1144** Austria. Leopold I of Habsburg AD 1657-1705. 3 Kreuzer AR 21 mm, 1,54 g Very Fine, holed

**1**



**1145** Austria. Franz I of Habsburg-Lorraine AD 1804-1835. 15 Kreuzer 35 mm, 9,95 g Very Fine

**1**



**1146** Austria. Franz Joseph AD 1848-1916. Medal AR 1908 25 mm, 6,69 g Extremely Fine

**1**



**1147** Austria. Franz Joseph AD 1848-1916. Medal AR 1890 23 mm, 2,96 g Extremely Fine

**1**



**1148** Austria. Franz Joseph AD 1848-1916. 1 Korona AR 1912 22 mm, 4,96 g Extremely Fine

**1**



**1149** Austria. Franz Joseph AD 1848-1916. 1 Korona AR 1916 22 mm, 4,98 g Good Very Fine

**1**





**1150** Austria. AD 1907. Medal AR 23 mm, 5,16 g Good Very Fine **1**



**1151** Austria. AD 1925. 1 Schilling AR 25 mm, 5,90 g Very Fine **1**



**1152** Belgium. AD 1862. 10 Centimes BI 21 mm, 4,48 g Good Very Fine **1**



**1153** Belgium. AD 1894. 10 Centimes BI 21 mm, 4,50 g Extremely Fine **1**



**1154** Belize. AD 1978. 1 Cent 1978 20 mm, 0,8 g Mint State **1**



**1155** British East Africa . AD 1888. 1 Paisa CU 25 mm, 6,38 g Extremely Fine **1**



**1156** British East Africa . AD 1957. 5 Cents 1957 26 mm, 5,6 g Good Extremely Fine **1**



**1157** Bulgaria. AD 1912. 5 Stotinki NI 16 mm, 3,01 g Very Fine **1**



**1158** Canada. AD 1945. 5 Cents NI 20 mm, 4,43 g Very Fine **1**



**1159** Central African State. AD 1975. 25 Francs 27 mm, 8,04 g Good Very Fine **1**



**1160** Central African State. AD 1975. 10 Francs 23 mm, 3,98 g Nearly Uncirculated **1**



**1161** Central African State. AD 1986. 50 Francs 21 mm, 4,71 g Nearly Uncirculated **1**



**1162** Ceylon. AD 1941. 10 Cents AR 15 mm, 1,17 g Good Very Fine **1**



**1163** Cuba. AD 2012. 1 Peso 2012 25 mm, 5,44 g Uncirculated **1**



**1164** Cyprus. AD 1956. 5 Mils CU 25 mm, 5,72 g Extremely Fine **1**



**1165** Cyprus. AD 1963. 5 Mils 25 mm, 5,59 g Nearly Uncirculated **1**



**1166** Czechia. AD 1842. 20 Haléřů 20 mm, 2,60 g Very Fine **1**



**1167** Czechoslovakia. AD 1946. 1 Koruna NI 20 mm, 4,51 g Nearly Uncirculated **1**



**1168** Czechoslovakia. AD 1947. 50 Haléřů CU 20 mm, 3,09 g Nearly Uncirculated **1**



**1169** Czechoslovakia. AD 1948. 2 Koruny NI 23 mm, 5,94 g Nearly Uncirculated **1**



**1170** Czechoslovakia. AD 1991. 5 Korun NI 26 mm, 7,25 g Nearly Uncirculated **1**



**1171** Denmark. AD 1925. 2 Kroner BR 31 mm, 13,00 g Very Fine **1**



**1172** Djibouti . AD 1991. 100 Francs 30 mm, 12,09 g Good Extremely Fine **1**



**1173** Egypt. Abdul Hamid II AD 1876-1909. 1/10 Qirsh NI 15 mm, 1,72 g Nearly Uncirculated **1**



**1174** Equatorial African States and Cameroon. AD 1961. 5 Francs 20 mm, 3,01 g Extremely Fine **1**



**1175** Equatorial African States and Cameroon. AD 1962. 25 Francs 27 mm, 8,07 g Good Extremely Fine **1**



**1176** Equatorial African States and Cameroon. AD 1965. 10 Francs 23 mm, 3,94 g Extremely Fine **1**



**1177** Ethiopia. AD 1936. 10 Santeem CU 22 mm, 6,13 g Good Very Fine **1**





**1178** Ethiopia. AD 1936. 5 Santeem CU 20 mm, 3,91 g Very Fine

**1**



**1179** Ethiopia. AD 1936. 1 Santeem CU 16 mm, 2,84 g Very Fine

**1**



**1180** Finland. AD 1913. 1 Penni CU 15 mm, 1,31 g Nearly Uncirculated

**1**



**1181** Finland. AD 1914. 1 Penni CU 15 mm, 1,30 g Nearly Uncirculated

**1**



**1182** Finland. AD 1926. 5 Markka 22 mm, 5,37 g Extremely Fine

**1**



**1183** Finland. AD 1941. 5 Markkaa 1941 23 mm, 4,5 g Uncirculated

**1**



**1184** Finland. AD 1942. 1 Markka 21 mm, 4,17 g Good Extremely Fine

**1**



**1185** Finland. AD 1950. 5 Markkaa 22 mm, 4,59 g Good Extremely Fine

**1**



**1186** France. Nancy (Lorraine) circa AD 1600-1650. 1 Denier 20 mm, 1,10 g Good Fine, tiny hole

**1**



**1187** France. Louis XIV 'the Sun King' AD 1643-1715. 1/12 Ecu AR 20 mm, 2,16 g Fine

**1**



**1188** France. Louis XIV 'the Sun King' AD 1643-1715. 1/12 Ecu AR 20 mm, 2,27 g Nearly Very Fine

**1**



**1189** France. Strasbourg. Louis XIV 'the Sun King' AD 1643-1715. 5 Sols AR 1704 18 mm, 1,26 g Good Fine

**1**



**1190** France. Lyon. Louis XV AD 1715-1774. 1 Sol AE 29 mm, 9,82 g Good Fine

**1**



**1191** France. Lille. Louis XVI, Constitutional Monarchy AD 1791-1792. 2 Sols BR 1791 33 mm, 24,03 g Good Fine

**1**



**1192** France. Lyon. Louis XVI, Constitutional Monarchy AD 1791-1792. 12 Deniers AE 29 mm, 11,72 g Very Fine

**1**



**1193** France. Paris AD 1799. 5 Centimes CU 28 mm, 6,51 g Good Fine

**1**



**1194** France. AD 1871. 1 Franc AR 22 mm, 4,84 g Nearly Very Fine

**1**



**1195** France. AD 1873. 50 Centimes AR 18 mm, 2,48 g Good Very Fine

**1**



**1196** France. AD 1904. 25 Centimes NI 24 mm, 7,03 g Very Fine

**1**



**1197** France. AD 1913. 50 Centimes AR 18 mm, 2,50 g Very Fine

**1**



**1198** France. AD 1915. 50 Centimes AR 18 mm, 2,52 g Good Very Fine

**1**



**1199** France. AD 1915. 50 Centimes AR 18 mm, 2,47 g Very Fine

**1**



**1200** France. AD 1918. 50 Centimes AR 18 mm, 2,51 g Very Fine

**1**



**1201** France. AD 1939. 10 Centimes NI 20 mm, 3,10 g Nearly Uncirculated

**1**



**1202** France. AD 1949. 10 Francs NI 26 mm, 7,05 g Extremely Fine

**1**



**1203** France. AD 1955. 100 Francs NI 24 mm, 5,99 g Very Fine

**1**



**1204** French Indochina. AD 1939. 5 Cents NI 24 mm, 4,00 g Very Fine

**1**



**1205** French Indochina. AD 1940. 10 Cents NI 18 mm, 2,93 g Extremely Fine

**1**





**1206** French Indochina. AD 1941. 20 Cents BI 24 mm, 5,89 g  
Very Fine

**1**



**1207** French Indochina. AD 1946. 5 Cents NI 18 mm, 0,72 g  
Nearly Uncirculated

**1**



**1208** Germany. AD 1800. Token BR 31 mm, 11,08 g Nearly Very  
Fine, hole

**1**



**1209** Germany. Bad Tölz AD 1917. 10 Pfennig 1917 23 mm,  
2,31 g Good Very Fine

**1**



**1210** Germany. AD 1922. 3 Mark 1922 28 mm, 2 g Uncirculated

**1**



**1211** Germany. AD 1923. 200 Mark 1923 F 23 mm, 1 g  
Uncirculated

**1**



**1212** Germany. AD 1923. 200 Mark 1923 D 23 mm, 1 g Mint  
State

**1**



**1213** Germany. AD 1923. 200 Mark 1923 A 23 mm, 1 g  
Uncirculated

**1**



**1214** Germany. circa AD 1934. Medal AR 34 mm, 10,76 g Very  
Fine

**1**



**1215** Germany. AD 1950. 50 Pfennig 1950 A 20 mm, 3,30 g  
Very Fine

**1**



**1216** Germany. AD 1969. Cancelled by the mint 1 Mark NI 24  
mm, 5,35 g Very Fine

**1**



**1217** Germany. circa AD 1970-1990. Medal AR 20 mm, 2,63 g  
Nearly Uncirculated

**1**



**1218** Germany. Nürnberg AD 1970-1990. Medal AR 20 mm,  
3,88 g Nearly Uncirculated

**1**



**1219** Germany. AD 1971. Medal AR 20 mm, 3,42 g Extremely  
Fine

**1**



**1220** Germany. Brandenburg-Preussen, AD 1977. Medal AR 20 mm, 4,05 g Nearly Uncirculated

**1**



**1221** Germany. Ulm AD 1977. Medal AR 20 mm, 4,83 g Extremely Fine

**1**



**1222** Germany. AD 1978. Medal AR 21 mm, 4,58 g Nearly Uncirculated

**1**



**1223** Germany. AD 1980. 5 Mark NI 28 mm, 10,07 g Extremely Fine

**1**



**1224** Germany. AD 1980. Medal AR 20 mm, 3,99 g Nearly Uncirculated

**1**



**1225** Germany. AD 1981. 5 Mark NI 29 mm, 10,06 g Nearly Uncirculated

**1**



**1226** Germany. AD 1985. Proof 5 Mark NI 29 mm, 10,01 g Nearly Uncirculated

**1**



**1227** Germany. AD 1986. Proof 5 Mark NI 29 mm, 9,99 g  
Uncirculated

**1**



**1228** Germany. AD 1986. 5 Mark NI 29 mm, 10,00 g Nearly  
Uncirculated

**1**



**1229** Germany. AD 1989. Cancelled by the mint 2 Mark NI 26  
mm, 7,01 g Extremely Fine

**1**



**1230** Germany. AD 1990. Cancelled by the mint 5 Mark NI 29  
mm, 10,01 g Extremely Fine

**1**



**1231** Ghana. AD 1958. 1/2 Penny CU 20 mm, 2,81 g Good  
Extremely Fine

**1**



**1232** Ghana. AD 1967. 1/2 Pesewa CU 20 mm, 2,88 g Nearly  
Uncirculated

**1**



**1233** Ghana. AD 1975. 1 Pesewa CU 25 mm, 5,52 g Nearly  
Uncirculated

**1**





**1234** Great Britain. AD 1830. Token BR 21 mm, 3,83 g Good  
Extremely Fine

**1**



**1235** Great Britain. AD 1921. 6 Pence AR 19 mm, 2,83 g Good  
Very Fine

**1**



**1236** Great Britain. AD 1938. 3 Pence AR 16 mm, 1,41 g  
Extremely Fine

**1**



**1237** Great Britain. AD 1940. 3 Pence AR 16 mm, 1,42 g Good  
Very Fine

**1**



**1238** Great Britain. AD 1942. 6 Pence AR 19 mm, 2,84 g  
Extremely Fine

**1**



**1239** Great Britain. AD 1942. 1 Farthing CU 20 mm, 2,77 g  
Nearly Uncirculated

**1**



**1240** Great Britain. AD 1944. 6 Pence AR 19 mm, 2,80 g  
Extremely Fine

**1**



**1241** Great Britain. AD 1946. 6 Pence AR 19 mm, 2,84 g Good Extremely Fine

**1**



**1242** Great Britain. AD 1965. Churchill Crown 1965 39 mm, 28,28 g Uncirculated

**1**



**1243** Greece. AD 1912. 10 Lepta NI 21 mm, 3,99 g Extremely Fine

**1**



**1244** Greece. AD 1968. 10 Drachm NI 30 mm, 10,06 g Extremely Fine

**1**



**1245** Greece. AD 1971. 2 Drachm NI 24 mm, 6,05 g Nearly Uncirculated

**1**



**1246** Greece. AD 1973. 20 Drachm NI 20 Drachm NI 29 mm, 11,08 g Nearly Uncirculated

**1**



**1247** Greece. AD 1973. 2 Drachm BR 24 mm, 6,01 g Nearly Uncirculated

**1**



**1248** Greece. AD 1973. 50 Lepta BR 17 mm, 2,50 g Good Extremely Fine

**1**



**1249** Guernsey. AD 1968. 5 Pence 1968 24 mm, 5,6 g Mint State

**1**



**1250** Guernsey. AD 1977. 10 Pence 1977 28 mm, 11,42 g Mint State

**1**



**1251** Honduras. AD 1971. 1 Cent 1971 20 mm, 2,58 g Mint State

**1**



**1252** Hong Kong. AD 1960. 1 Dollar NI 30 mm, 11,65 g Extremely Fine

**1**



**1253** Indonesia (Netherland East Indies). AD 1765. 1 Duit 21 mm, 2,93 g Very Fine

**1**



**1254** Indonesia (Netherland East Indies). AD 1939. 1 Cent CU 23 mm, 3,98 g Nearly Uncirculated

**1**



**1255** Indonesia (Netherland East Indies). AD 1945. 1/2 Cent CU  
16 mm, 2,31 g Very Fine

**1**



**1256** Ireland. AD 1928. 1 Pincin CU 30 mm, 9,25 g Very Fine

**1**



**1257** Ireland. AD 1942. 1 Pincin CU 30 mm, 9,52 g Very Fine

**1**



**1258** Island. AD 1942. 1 Eyrir CU 15 mm, 1,52 g Good  
Extremely Fine

**1**



**1259** Italy. circa AD 1300-1400. Soldino AR 12 mm, 0,30 g Good  
Fine

**1**



**1260** Italy. Dalmatia et Albania. Republic of Venice AD 1500-  
1600. 2 Soldi CU 28 mm, 5,78 g Very Fine

**1**



**1261** Italy. Venezia (Venice) circa AD 1500-1650. 6 Bagattini CU  
20 mm, 2,72 g Good Fine

**1**





**1262** Italy. Napoli. Carlo V di Spagna AD 1516-1554. Cinquina, contemporary forgery 16 mm, 1,04 g Very Fine

**1**



**1263** Italy. Venezia (Venice). Pietro Lando AD 1539-1545. Quattrino Æ 15 mm, 0,57 g Very Fine

**1**



**1264** Italy. Papal State, Rome. Paul IV AD 1555-1559. Giulio AR 25 mm, 2,61 g Very Fine

**1**



**1265** Italy. Papal State, Rome. Pius IV AD 1559-1565. Giulio AR 25 mm, 2,50 g Very Fine

**1**



**1266** Italy. Venezia (Venice) AD 1600-1700. Imitative issue Zecchino AV 22 mm, 3,01 g Very Fine, holed

**1**



**1267** Italy. Venezia (Venice). Antonio Priuli AD 1618-1623. Soldo CU 21 mm, 1,85 g Very Fine

**1**



**1268** Italy. Venezia (Venice). Giovanni Corner AD 1625-1629. Soldo BI 20 mm, 1,70 g Very Fine

**1**



**1269** Italy. Venezia (Venice). Giovanni Corner AD 1625-1629. 60 Tornese 30 mm, 5,65 g Good Fine, holed

**1**



**1270** Italy. Venezia (Venice). Alvise III Mocenigo AD 1722-1732. Soldo CU 22 mm, 1,66 g Good Fine

**1**



**1271** Italy. Genova AD 1826. 1 Cent CU 19 mm, 1,92 g Good Fine

**1**



**1272** Italy. Pius IX AD 1846-1878. 10 Soldi AR 1868 18 mm, 2,48 g Good Very Fine

**1**



**1273** Italy. Papal State, Rome. Pius IX AD 1846-1878. 1 Lira AR 1866 23 mm, 4,94 g Good Very Fine

**1**



**1274** Italy. Regno d'Italia AD 1911. 10 Centesimi CU 30 mm, 9,96 g Good Very Fine

**1**



**1275** Italy. Regno d'Italia AD 1914. 2 Lire AR 27 mm, 9,96 g Nearly Very Fine

**1**



**1276** Italy. AD 1940. 50 Centesimi 1940 24 mm, 6 g Good Extremely Fine

**1**



**1277** Italy. Regno d'Italia AD 1940. 2 Lire 29 mm, 10,07 g Extremely Fine

**1**



**1278** Italy. AD 1942. 20 Centesimi 1942 22 mm, 3,9 g Very Fine

**1**



**1279** Italy. AD 1950. 10 Lire 29 mm, 2,97 g Extremely Fine

**1**



**1280** Japan. AD 1964. Olympic Games 100 Yen AR 22 mm, 4,77 g Extremely Fine

**1**



**1281** Jordan. AD 1984. 50 Fils 1984 26 mm, 7,50 g Uncirculated

**1**



**1282** Jordan. AD 1984. 100 Fils 1984 30 mm, 12 g Uncirculated

**1**



**1283** Laos. AD 1952. 10 Cents 1952 23 mm, 1,32 g Mint State

**1**



**1284** Laos. AD 1952. 20 Cents 1952 27 mm, 2,2 g Mint State

**1**



**1285** Laos. AD 1952. 50 Cents TN 30 mm, 3,84 g Good Extremely Fine

**1**



**1286** Liberia. AD 2005. 10 Dollars 2005 33 mm, 14,8 g Proof

**1**



**1287** Libya. AD 1952. 5 Milliemes CU 28 mm, 10,00 g Good Extremely Fine

**1**



**1288** Liechtenstein. AD 1900. 1 Krone AR 23 mm, 4,99 g Very Fine

**1**



**1289** Luxemburg. AD 1901. 2 1/2 Cents CU 20 mm, 2,47 g Good Very Fine

**1**





**1290** Luxemburg. AD 1908. 5 Cents NI 17 mm, 2,47 g Very Fine **1**



**1291** Malta. AD 1973. 1 Pound AR 32 mm, 9,92 g Extremely Fine **1**



**1292** Mauritius. AD 1938. 1/4 Rupee AR 19 mm, 2,90 g Very Fine **1**



**1293** Mexico. AD 1965. 20 Centavos CU 28 mm, 9,99 g Good Extremely Fine **1**



**1294** Mexico. AD 1987. 500 Pesos 28 mm, 12,71 g Good Very Fine **1**



**1295** Montenegro. AD 1914. 20 Para NI 20 mm, 3,96 g Good Extremely Fine **1**



**1296** Morocco. AD 1960. 1 Dirham AR 24 mm, 6,00 g Extremely Fine **1**



**1297** Nepal. AD 1977-1979. 1 Rupee NI 27 mm, 7,45 g  
Extremely Fine

**1**



**1298** Netherlands. AD 1878. 1 Cent CU 19 mm, 2,47 g Very Fine

**1**



**1299** Netherlands. AD 1883. 1 Cent CU 19 mm, 2,59 g Good  
Very Fine

**1**



**1300** Netherlands. AD 1884. 1 Cent CU 19 mm, 2,41 g  
Extremely Fine

**1**



**1301** Netherlands. AD 1885. 1/2 Cent CU 14 mm, 1,25 g  
Extremely Fine

**1**



**1302** Netherlands. AD 1885. 1/2 Cent CU 14 mm, 1,20 g  
Extremely Fine

**1**



**1303** Netherlands. AD 1916. 2 1/2 Cents CU 23 mm, 3,99 g  
Good Very Fine

**1**



**1304** Netherlands. AD 1918. 2 1/2 Cents CU 23 mm, 3,90 g  
Good Very Fine

**1**



**1305** Netherlands. AD 1929. 2 1/2 Cents CU 23 mm, 3,99 g  
Extremely Fine

**1**



**1306** Netherlands. AD 1929. 1 Cent CU 19 mm, 2,43 g Good  
Very Fine

**1**



**1307** Netherlands. AD 1938. 1/2 Cent CU 14 mm, 1,26 g Good  
Extremely Fine

**1**



**1308** Netherlands. AD 1940. 1 Cent CU 18 mm, 2,47 g Nearly  
Uncirculated

**1**



**1309** Netherlands Antilles. AD 1948. 2 1/2 Cents CU 23 mm,  
3,96 g Extremely Fine

**1**



**1310** Netherlands Antilles. AD 1956. 2 1/2 Cents CU 23 mm,  
4,01 g Extremely Fine

**1**



**1311** New Caledonia. AD 1971. 1 Franc 23 mm, 1,29 g Nearly  
Uncirculated

**1**



**1312** New Caledonia. AD 1972. 20 Francs 28 mm, 10,03 g  
Nearly Uncirculated

**1**



**1313** New Caledonia. AD 1972. 10 Francs 24 mm, 5,97 g Nearly  
Uncirculated

**1**



**1314** New Caledonia. AD 1990. 5 Francs 30 mm, 3,85 g Nearly  
Uncirculated

**1**



**1315** New Caledonia. AD 1990. 2 Francs 27 mm, 2,19 g Nearly  
Uncirculated

**1**



**1316** New Caledonia. AD 1990. 1 Franc 23 mm, 1,31 g Nearly  
Uncirculated

**1**



**1317** Nigeria. AD 1959. 1 Penny CU 28 mm, 7,53 g Nearly  
Uncirculated

**1**





**1318** Panama. AD 1951. 1/4 Balboa 25 mm, 6,24 g Good Very Fine

**1**



**1319** Peru. AD 1974. 10 Soles NI 30 mm, 11,70 g Extremely Fine

**1**



**1320** Philippines. AD 1964. 25 Centavos NI 24 mm, 5,23 g Nearly Uncirculated

**1**



**1321** Poland. Sigismund III Vasa AD 1587-1632. 3 Groschen AR 20 mm, 2,26 g Very Fine

**1**



**1322** Polynesie. AD 1967. 10 Francs 24 mm, 5,99 g Nearly Uncirculated

**1**



**1323** Polynesie. AD 1982. 100 Francs 30 mm, 10,06 g Extremely Fine

**1**



**1324** Polynesie. AD 1991. 5 Francs 30 mm, 3,86 g Nearly Uncirculated

**1**



**1325** Polynesie. AD 1991. 2 Francs 27 mm, 2,18 g Nearly  
Uncirculated

**1**



**1326** Polynesie. AD 1991. 1 Franc 23 mm, 1,29 g Nearly  
Uncirculated

**1**



**1327** Portugal. AD 1944. 2 1/2 Escudos AR 20 mm, 3,40 g  
Nearly Uncirculated

**1**



**1328** Portugal. AD 1951. 5 Escudos AR 25 mm, 7,01 g Nearly  
Uncirculated

**1**



**1329** Portugal. AD 1951. 50 Centavos NI 22 mm, 4,52 g Nearly  
Uncirculated

**1**



**1330** Republique Centralafricaine. AD 1963. 50 Francs 30 mm,  
11,95 g Good Extremely Fine

**1**



**1331** Reunion. AD 1969. 1 Franc 23 mm, 1,31 g Nearly  
Uncirculated

**1**



**1332** Romania. AD 1924. 1 Leu NI 20 mm, 3,64 g Extremely Fine

**1**



**1333** Russia. circa AD 1500-1600. Denga AR 11 mm, 0,33 g Good Fine

**1**



**1334** Russia. circa AD 1550-1650. 1 Kopeck AR 14 mm, 0,63 g Very Fine

**1**



**1335** Russia. AD 1735. Denga Æ 20 mm, 4,82 g Very Fine

**1**



**1336** Russia. circa AD 1900. Medal AR 35 mm, 8,97 g Very Fine

**1**



**1337** Russia. AD 1991. 1 Rouble 1991 31 mm, 12,7 g Proof

**1**



**1338** San Marino. AD 1932. 10 Lire AR 27 mm, 10,04 g Extremely Fine

**1**



**1339** Slovakia. AD 1941. 50 Halieron NI 20 mm, 3,29 g Nearly Uncirculated

**1**



**1340** Slovakia. AD 1942. 1 Krona NI 21 mm, 4,98 g Nearly Uncirculated

**1**



**1341** South Africa. AD 1977. 1 Rand NI 30 mm, 12,13 g Good Very Fine

**1**



**1342** Southern Rhodesia. AD 1947. 3 Pence AR 16 mm, 1,35 g Very Fine

**1**



**1343** Spain. AD 1957. 50 Pesetas NI 30 mm, 12,53 g Nearly Uncirculated

**1**



**1344** Spain. AD 1957. 25 Pesetas NI 26 mm, 8,57 g Extremely Fine

**1**



**1345** Spain. circa AD 1970-2000. Medal AR 30 mm, 7,43 g Good Extremely Fine

**1**





**1346** Spain. AD 1975. 100 Pesetas 34 mm, 16,84 g Extremely Fine

**1**



**1347** Straits Settlements. AD 1900. 5 Cents AR 15 mm, 1,34 g Good Very Fine

**1**



**1348** Sweden. AD 1720. 1 Ör CU 23 mm, 4,47 g Good Fine

**1**



**1349** Sweden. AD 1828. 1/2 Skilling CU 30 mm, 8,60 g Very Fine

**1**



**1350** Sweden. AD 1965. 1 Krona AR 25 mm, 6,97 g Nearly Uncirculated

**1**



**1351** Sweden. AD 1972. 5 Krona NI 28 mm, 9,52 g Good Extremely Fine

**1**



**1352** Switzerland. AD 1945. 1 Franc AR 23 mm, 4,98 g Good Very Fine

**1**



**1353** Tunisia. AD 1946. 5 Francs BR 31 mm, 12,08 g Very Fine

**1**



**1354** Turkey. Mehmed V Reşâd AD 1909-1918. 20 Para NI 20 mm, 4,04 g Extremely Fine

**1**



**1355** Turkey. Mehmed V Reşâd AD 1909-1918. 10 Para NI 18 mm, 2,66 g Extremely Fine

**1**



**1356** Turkey. AD 1925. 25 Kurus 1925 30 mm, 10 g Nearly Extremely Fine

**1**



**1357** Uganda. AD 1966. 5 Cents CU 20 mm, 3,24 g Extremely Fine

**1**



**1358** Uruguay. AD 1949. 5 Centimos CU 23 mm, 5,03 g Good Extremely Fine

**1**



**1359** USA. AD 1863. Token BR 19 mm, 3,17 g Very Fine

**1**



**1360** USA. AD 1863. Token CU 20 mm, 3,49 g Extremely Fine

**1**



**1361** USA. circa AD 1880-1900. Token of 5 Cents CU 19 mm, 2,97 g Very Fine

**1**



**1362** USA. AD 1929. 5 Cents NI 20 mm, 5,00 g Very Fine

**1**



**1363** USA. AD 1959. 1/4 Dollar AR 24 mm, 6,25 g Extremely Fine

**1**



**1364** Venezuela. AD 1945. 1 Bolivar AR 22 mm, 4,91 g Good Very Fine

**1**



**1365** Western African State. AD 1948. 2 Francs 26 mm, 2,20 g Very Fine

**1**



**1366** Western African State. AD 1955. 2 Francs 27 mm, 2,24 g Good Very Fine

**1**



**1367** Western African State. AD 1967. 5 Francs 20 mm, 2,99 g  
Nearly Uncirculated

**1**



**1368** Western African State. AD 1967. 1 Franc 23 mm, 1,29 g  
Nearly Uncirculated

**1**



**1369** Western African State. AD 1969. 5 Francs 20 mm, 2,99 g  
Good Very Fine

**1**



**1370** Western African State. AD 1970. 25 francs 27 mm, 8,01 g  
Nearly Uncirculated

**1**



**1371** Western African State. AD 1976. 100 Francs 25 mm, 7,00 g  
Extremely Fine

**1**



**1372** Western African State. AD 1984. 50 Francs 21 mm, 5,00 g  
Nearly Uncirculated

**1**



**1373** Yugoslavia. AD 1943. Josip Broz Tito Medal AR 27 mm,  
7,95 g Nearly Uncirculated

**1**





**1374** Yugoslavia. AD 1973. Josip Broz Tito Medal AR 28 mm, 7,98 g Nearly Uncirculated

**1**



**1375** Austria. AD 2003. 5 Euro AR 27 mm, 10,09 g Nearly Uncirculated

**1**



**1376** Lot of ca. 7 greek bronze coins / SOLD AS SEEN, NO RETURN! Very Fine

**1**



**1377** Lot of ca. 3 Probus Antoniniani / SOLD AS SEEN, NO RETURN! Very Fine

**1**



**1378** Lot of ca. 3 Aurelianus Antoniniani / SOLD AS SEEN, NO RETURN! Very Fine

**1**



**1379** Lot of ca. 5 Roman coins (Philip I, Trebonianus Gallus, Gallienus, Otacilia Severa) / SOLD AS SEEN, NO RETURN! Very Fine

**1**



**1380** Lot of ca. 5 Roman coins (Marc Aurel, Faustina I, Trajan, Julia Soaemias) / SOLD AS SEEN, NO RETURN! Good Fine

**1**



**1381** Lot of ca. 5 Roman coins (Lucilla, Lucius Verus, Elagabal, Hadrian, Trajan) / SOLD AS SEEN, NO RETURN! Very Fine

**1**



**1382** Lot of ca. 3 Follis (Maximinus II Daia) / SOLD AS SEEN, NO RETURN! Nearly Very Fine

**1**



**1383** Lot of ca. 3 Licinius Follis / SOLD AS SEEN, NO RETURN! Very Fine

**1**



**1384** Lot of ca. 15 late roman bronze coins / SOLD AS SEEN, NO RETURN! Good Fine

**1**



**1385** Lot of ca. 50 byzantine scyphate coins / SOLD AS SEEN, NO RETURN! Good Fine

**1**



**1386** Lot of ca. 11 islamic silver coins / SOLD AS SEEN, NO RETURN! Very Fine

**1**



**1387** Lot of ca. 11 islamic silver coins / SOLD AS SEEN, NO RETURN! Very Fine

**1**



**1388** Lot of ca. 10 islamic silver coins / SOLD AS SEEN, NO RETURN! Very Fine

**1**



**1389** Lot of ca. 41 russian coins / SOLD AS SEEN, NO RETURN!  
Very Fine

**1**



**1390** Lot of ca. 43 russian coins / SOLD AS SEEN, NO RETURN!  
Very Fine

**1**



**1391** Lot of ca. 44 russian coins / SOLD AS SEEN, NO RETURN!  
Very Fine

**1**



**1392** Lot of ca. 46 russian coins / SOLD AS SEEN, NO RETURN!  
Very Fine

**1**



**1393** Lot of ca. 37 russian coins / SOLD AS SEEN, NO RETURN!  
Very Fine

**1**



**1394** Lot of ca. 30 russian coins / SOLD AS SEEN, NO RETURN!  
Very Fine

**1**



**1395** Lot of ca. 41 russian coins / SOLD AS SEEN, NO RETURN!  
Very Fine

**1**



**1396** Lot of ca. 52 russian coins / SOLD AS SEEN, NO RETURN!  
Very Fine

**1**



**1397** Lot of ca. 30 russian coins / SOLD AS SEEN, NO RETURN!  
Extremely Fine

**1**



**1398** Lot of ca. 21 russian coins / SOLD AS SEEN, NO RETURN!  
Extremely Fine

**1**





**1399** Lot of ca. 30 russian coins / SOLD AS SEEN, NO RETURN!  
Extremely Fine

**1**



**1400** Lot of ca. 28 russian coins / SOLD AS SEEN, NO RETURN!  
Extremely Fine

**1**



**1401** Lot of ca. 40 modern world coins / SOLD AS SEEN, NO  
RETURN! Very Fine

**1**



**1402** Lot of ca. 154 modern world coins / SOLD AS SEEN, NO  
RETURN! Very Fine

**1**



**1403** Lot of ca. 122 modern world coins / SOLD AS SEEN, NO  
RETURN! Very Fine

**1**



**1404** Lot of ca. 29 modern world coins / SOLD AS SEEN, NO RETURN! Nearly Very Fine

**1**



**1405** Lot of ca. 26 modern world coins / SOLD AS SEEN, NO RETURN! Nearly Very Fine

**1**



**1406** Lot of ca. 3 Bulgarian coins / SOLD AS SEEN, NO RETURN! Very Fine

**1**



**1407** Lot of ca. 3 Bulgarian coins / SOLD AS SEEN, NO RETURN! Very Fine

**1**