



DEMOS

Antiquities Auction 40

2 November 2024

All prices are starting prices (EUR)
PDF catalog created by www.biddr.com



1 Weight 6,08 gr - Diameter 43 mm. BYZANTINE EMPIRE.
BRONZE CROSS.(8th-10th century).Ae. Material : Bronze.

10



2 Weight 3,78 gr - Diameter 29 mm. BYZANTINE EMPIRE.
BRONZE CROSS.(8th-10th century).Ae. Material : Bronze.

10



3 Weight 2,33 gr - Diameter 26 mm. BYZANTINE EMPIRE.
BRONZE CROSS.(8th-10th century).Ae. Material : Bronze.

10



4 Weight 3,93 gr - Diameter 33 mm. BYZANTINE EMPIRE.
BRONZE CROSS.(8th-10th century).Ae. Material : Bronze.

10



5 Weight 2,99 gr - Diameter 32 mm. BYZANTINE EMPIRE.
BRONZE CROSS.(8th-10th century).Ae. Material : Bronze.

10



6 Weight 2,70 gr - Diameter 26 mm. BYZANTINE EMPIRE.
BRONZE CROSS.(8th-10th century).Ae. Material : Bronze.

10



7 Weight 1,46 gr - Diameter 24 mm. BYZANTINE EMPIRE.
BRONZE CROSS.(8th-10th century).Ae. Material : Bronze.

10



8 Weight 76,18 gr - Diameter 129 mm. BYZANTINE EMPIRE.
BRONZE CROSS.(8th-10th century).Ae. Material : Bronze.

10



9 Weight 1,44 gr - Diameter 24 mm. BYZANTINE EMPIRE.
BRONZE CROSS.(8th-10th century).Ae. Material : Bronze.

10



10 Weight 4,55 gr - Diameter 29 mm. BYZANTINE EMPIRE.
BRONZE CROSS.(8th-10th century).Ae. Material : Bronze.

10



11 Weight 3,43 gr - Diameter 29 mm. BYZANTINE EMPIRE.
BRONZE CROSS.(8th-10th century).Ae. Material : Bronze.

10



12 Weight 3,48 gr - Diameter 28 mm. BYZANTINE EMPIRE.
SILVER CROSS.(8th-10th century).Ae. Material : SILVER

10



13 Weight 4,81 gr - Diameter 37 mm. BYZANTINE EMPIRE.
BRONZE CROSS.(8th-10th century).Ae. Material : Bronze.

10



14 Weight 6,92 gr - Diameter 45 mm. BYZANTINE EMPIRE.
BRONZE CROSS.(8th-10th century).Ae. Material : Bronze.

10



15 Weight 5,86 gr - Diameter 30 mm. BYZANTINE EMPIRE.
BRONZE CROSS.(8th-10th century).Ae. Material : Bronze.

10



16 Weight 9,24 gr - Diameter 44 mm. BYZANTINE EMPIRE.
BRONZE CROSS.(8th-10th century).Ae. Material : Bronze.

10



17 Weight 3,80 gr - Diameter 25 mm. BYZANTINE EMPIRE.
BRONZE CROSS.(8th-10th century).Ae. Material : Bronze.

10



18 Weight 1,56 gr - Diameter 28 mm. BYZANTINE EMPIRE.
BRONZE CROSS.(8th-10th century).Ae. Material : Bronze.

10



19 Weight 4,76 gr - Diameter 38 mm. BYZANTINE EMPIRE.
BRONZE CROSS.(8th-10th century).Ae. Material : Bronze.

10



20 Weight 3,80 gr - Diameter 41 mm. BYZANTINE EMPIRE.
BRONZE CROSS.(8th-10th century).Ae. Material : Bronze.

10



21 Weight 1,57 gr - Diameter 24 mm. BYZANTINE EMPIRE.
BRONZE CROSS.(8th-10th century).Ae. Material : Bronze.

10



22 Weight 4,13 gr - Diameter 29 mm. BYZANTINE EMPIRE.
BRONZE CROSS.(8th-10th century).Ae. Material : Bronze.

10



23 Weight 16,13 gr - Diameter 35 mm. BYZANTINE EMPIRE.
BRONZE CROSS.(8th-10th century).Ae. Material : Bronze.

10



24 Weight 4,06 gr - Diameter 34 mm. BYZANTINE EMPIRE.
BRONZE CROSS.(8th-10th century).Ae. Material : Bronze.

10



25 Weight 1,62 gr - Diameter 26 mm. BYZANTINE EMPIRE.
BRONZE CROSS.(8th-10th century).Ae. Material : Bronze.

10



26 Weight 1,70 gr - Diameter 25 mm. BYZANTINE EMPIRE.
BRONZE CROSS.(8th-10th century).Ae. Material : Bronze.

10



27 Weight 1,53 gr - Diameter 25 mm. BYZANTINE EMPIRE.
BRONZE CROSS.(8th-10th century).Ae. Material : Bronze.

10



28 Weight 2,08 gr - Diameter 23 mm. BYZANTINE EMPIRE.
BRONZE CROSS.(8th-10th century).Ae. Material : Bronze.

10



29 Weight 17,13 gr - Diameter 62 mm. BYZANTINE EMPIRE.
BRONZE CROSS.(8th-10th century).Ae. Material : Bronze.

10



30 Weight 1,62 gr - Diameter 25 mm. BYZANTINE EMPIRE.
BRONZE CROSS.(8th-10th century).Ae. Material : Bronze.

10



31 Weight 28,59 gr - Diameter 71 mm. BYZANTINE EMPIRE.
BRONZE CROSS.(8th-10th century).Ae. Material : Bronze.

10



32 Weight 5,08 gr - Diameter 32 mm. BYZANTINE EMPIRE.
BRONZE CROSS.(8th-10th century).Ae. Material : Bronze.

10



33 Weight 21,88 gr - Diameter 67 mm. BYZANTINE EMPIRE.
BRONZE CROSS.(8th-10th century).Ae. Material : Bronze.

10



34 Weight 53,64 gr - Diameter 89 mm. BYZANTINE EMPIRE.
BRONZE CROSS.(8th-10th century).Ae. Material : Bronze.

10



35 Weight 1,75 gr - Diameter 26 mm. BYZANTINE EMPIRE.
BRONZE CROSS.(8th-10th century).Ae. Material : Bronze.

10



36 Weight 2,77 gr - Diameter 24 mm. BYZANTINE EMPIRE.
BRONZE CROSS.(8th-10th century).Ae. Material : Bronze.

10



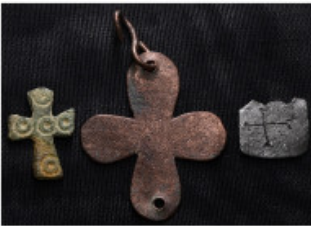
37 Weight 4,28 gr - Diameter 36 mm. BYZANTINE EMPIRE.
BRONZE CROSS.(8th-10th century).Ae. Material : Bronze.

10



38 Weight 1,55 gr - Diameter 24 mm. BYZANTINE EMPIRE.
BRONZE CROSS.(8th-10th century).Ae. Material : Bronze.

10



39 3 pieces of crosses. Sold as seen. No return. BYZANTINE EMPIRE.
EMPIRE. BRONZE CROSS.(8th-10th century).Ae. Material : Bronze.

10



40 Weight 2,06 gr - Diameter 24 mm. BYZANTINE EMPIRE.
BRONZE CROSS.(8th-10th century).Ae. Material : Bronze.

10



41 Weight 2,06 gr - Diameter 27 mm. BYZANTINE EMPIRE.
BRONZE CROSS.(8th-10th century).Ae. Material : Bronze.

10



42 Weight 55,85 gr - Diameter 62 mm. BYZANTINE EMPIRE.
BRONZE CROSS.(8th-10th century).Ae. Material : Bronze.

10



43 Weight 4,08 gr - Diameter 32 mm. BYZANTINE EMPIRE.
BRONZE CROSS.(8th-10th century).Ae. Material : Bronze.

10



44 Weight 3,66 gr - Diameter 69 mm. BYZANTINE EMPIRE.
BRONZE CROSS.(8th-10th century).Ae. Material : Bronze.

10



45 Weight 12,75 gr - Diameter 48 mm. BYZANTINE EMPIRE.
BRONZE CROSS.(8th-10th century).Ae. Material : Bronze.

10



46 Weight 2,33 gr - Diameter 24 mm. BYZANTINE EMPIRE.
BRONZE CROSS.(8th-10th century).Ae. Material : Bronze.

10



47 Weight 3,59 gr - Diameter 42 mm. BYZANTINE EMPIRE.
BRONZE CROSS.(8th-10th century).Ae. Material : Bronze.

10



48 Weight 2,34 gr - Diameter 26 mm. BYZANTINE EMPIRE.
BRONZE CROSS.(8th-10th century).Ae. Material : Bronze.

10



49 Weight 27,17 gr - Diameter 83 mm. BYZANTINE EMPIRE.
BRONZE CROSS.(8th-10th century).Ae. Material : Bronze.

10



50 Weight 1,47 gr - Diameter 20 mm. BYZANTINE EMPIRE.
BRONZE CROSS.(8th-10th century).Ae. Material : Bronze.

10



51 Weight 14,00 gr - Diameter 64 mm. BYZANTINE EMPIRE.
BRONZE CROSS.(8th-10th century).Ae. Material : Bronze.

10



52 Weight 2,68 gr - Diameter 30 mm. BYZANTINE EMPIRE.
BRONZE CROSS.(8th-10th century).Ae. Material : Bronze.

10



53 Byzantine Reliquary Cross Pendant 12th century AD. A bronze reliquary cross pendant, each with roundel finials containing facing busts; Robbed Mary Theotokos right in the middle, busts of 4 Saints flanking. Weight 30,28 gr - Diameter 70 mm.

200



54 Weight 2,71 gr - Diameter 23 mm. BYZANTINE EMPIRE.
BRONZE CROSS.(8th-10th century).Ae. Material : Bronze.

10



55 Weight 2,68 gr - Diameter 24 mm. BYZANTINE EMPIRE.
BRONZE CROSS.(8th-10th century).Ae. Material : Bronze.

10



56 Weight 21,01 gr - Diameter 65 mm. BYZANTINE EMPIRE.
BRONZE CROSS.(8th-10th century).Ae. Material : Bronze.

10



57 Weight 1,19 gr - Diameter 23 mm. BYZANTINE EMPIRE.
BRONZE CROSS.(8th-10th century).Ae. Material : Bronze.

10



58 Weight 18,55 gr - Diameter 79 mm. BYZANTINE EMPIRE.
BRONZE CROSS.(8th-10th century).Ae. Material : Bronze.

10



59 Weight 31,01 gr - Diameter 87 mm. BYZANTINE EMPIRE.
BRONZE CROSS.(8th-10th century).Ae. Material : Bronze.

10



60 Weight 5,39 gr - Diameter 38 mm. BYZANTINE EMPIRE.
BRONZE CROSS.(8th-10th century).Ae. Material : Bronze.

10



61 Weight 1,08 gr - Diameter 25 mm. BYZANTINE EMPIRE.
BRONZE CROSS.(8th-10th century).Ae. Material : Bronze.

10



62 Weight 37,13 gr - Diameter 70 mm. BYZANTINE EMPIRE.
BRONZE CROSS.(8th-10th century).Ae. Material : Bronze.

10



63 Weight 2,48 gr - Diameter 30 mm. BYZANTINE EMPIRE.
BRONZE CROSS.(8th-10th century).Ae. Material : Bronze.

10



64 Weight 4,70 gr - Diameter 24 mm. ANCIENT ROMAN BRONZE
BUCKLE.(1st-2nd century).Ae.

5



65 Weight 16,44 gr - Diameter 44 mm. ANCIENT BYZANTINE
BRONZE BUCKLE.(5th-9th Century).Ae.

5



66 Weight 25,75 gr - Diameter 59 mm. ANCIENT BYZANTINE
BRONZE BUCKLE.(5th-9th Century).Ae.

5



67 Weight 16,00 gr - Diameter 48 mm. ANCIENT ROMAN
BRONZE BUCKLE.(1st-2nd century).Ae.

5



68 Weight 3,02 gr - Diameter 34 mm. ANCIENT ROMAN BRONZE
BUCKLE.(1st-2nd century).Ae.

5



69 Weight 52,40 gr - Diameter 87 mm. ANCIENT BYZANTINE BRONZE BUCKLE.(5th-9th Century).Ae.

5



70 Weight 43,17 gr - Diameter 88 mm. ANCIENT ROMAN BRONZE BUCKLE.(1st-2nd century).Ae.

5



71 Weight 13,43 gr - Diameter 47 mm. ANCIENT ROMAN BRONZE BUCKLE.(1st-2nd century).Ae.

5



72 Weight 4,25 gr - Diameter 24 mm. ANCIENT BYZANTINE BRONZE BUCKLE. (5th-9th Century).Ae.

5



73 Weight 19,62 gr - Diameter 66 mm. ANCIENT ROMAN BRONZE BUCKLE.(1st-2nd century).Ae.

5



74 2 pieces of belt buckles. Sold as seen. No return. ANCIENT ROMAN BRONZE BUCKLE.(1st-2nd century).Ae.

5



75 Weight 12,41 gr - Diameter 31 mm. ANCIENT ROMAN BRONZE BUCKLE.(1st-2nd century).Ae.

5



76 Weight 7,36 gr - Diameter 46 mm. ANCIENT BYZANTINE BRONZE BUCKLE. (5th-9th Century).Ae.

5



77 Weight 27,45 gr - Diameter 55 mm. ANCIENT ROMAN BRONZE BUCKLE.(1st-2nd century).Ae.

5



78 Weight 28,18 gr - Diameter 55 mm. ANCIENT ROMAN BRONZE BUCKLE.(1st-2nd century).Ae.

5



79 Weight 69,05 gr - Diameter 89 mm. ANCIENT ROMAN BRONZE BUCKLE.(1st-2nd century).Ae.

5



80 Weight 15,90 gr - Diameter 41 mm. ANCIENT ROMAN BRONZE BUCKLE.(1st-2nd century).Ae.

5



81 Weight 7,60 gr - Diameter 42 mm. ANCIENT ROMAN BRONZE BUCKLE.(1st-2nd century).Ae.

5



82 Weight 4,25 gr - Diameter 38 mm. ANCIENT ROMAN BRONZE BUCKLE.(1st-2nd century).Ae.

5



83 Weight 6,61 gr - Diameter 41 mm. ANCIENT ROMAN BRONZE BUCKLE.(1st-2nd century).Ae.

5



84 Weight 18,75 gr - Diameter 45 mm. ANCIENT BYZANTINE BRONZE BUCKLE. (5th-9th Century).Ae.

5



85 Weight 23,35 gr - Diameter 55 mm. ANCIENT ROMAN BRONZE BUCKLE.(1st-2nd century).Ae.

5



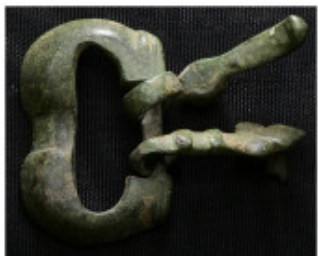
86 Weight 7,99 gr - Diameter 31 mm. ANCIENT ROMAN SILVER BUCKLE.(1st-2nd century).SILVER

5



87 Weight 8,07 gr - Diameter 37 mm. ANCIENT BYZANTINE BRONZE BUCKLE. (5th-9th Century).Ae.

5



88 Weight 19,77 gr - Diameter 50 mm. ANCIENT BYZANTINE BRONZE BUCKLE. (5th-9th Century).Ae.

5



89 Weight 20,56 gr - Diameter 38 mm. Pilgrim's Holy Water Ampulla with inscription on, 10th-14th century AD. A lead-alloy ampulla with tapering body, flared neck and lateral loop handles.

9



90 Weight 18,99 gr - Diameter 38 mm. Pilgrim's Holy Water Ampulla with inscription on, 10th-14th century AD. A lead-alloy ampulla with tapering body, flared neck and lateral loop handles.

9



91 Weight 11,94 gr - Diameter 38 mm. Pilgrim's Holy Water Ampulla with inscription on, 10th-14th century AD. A lead-alloy ampulla with tapering body, flared neck and lateral loop handles.

9



92 Weight 18,00 gr - Diameter 48 mm. Pilgrim's Holy Water Ampulla with inscription on, 10th-14th century AD. A lead-alloy ampulla with tapering body, flared neck and lateral loop handles.

9



93 Weight 9,50 gr - Diameter 27 mm. Pilgrim's Holy Water Ampulla with inscription on, 10th-14th century AD. A lead-alloy ampulla with tapering body, flared neck and lateral loop handles.

9



94 Weight 11,12 gr - Diameter 42 mm. Pilgrim's Holy Water Ampulla with inscription on, 10th-14th century AD. A lead-alloy ampulla with tapering body, flared neck and lateral loop handles.

9



95 Weight 24,23 gr - Diameter 43 mm. Pilgrim's Holy Water Ampulla with inscription on, 10th-14th century AD. A lead-alloy ampulla with tapering body, flared neck and lateral loop handles.

9



96 Weight 12,49 gr - Diameter 29 mm. Pilgrim's Holy Water Ampulla with inscription on, 10th-14th century AD. A lead-alloy ampulla with tapering body, flared neck and lateral loop handles.

9



97 Weight 11,69 gr - Diameter 43 mm. Pilgrim's Holy Water Ampulla with inscription on, 10th-14th century AD. A lead-alloy ampulla with tapering body, flared neck and lateral loop handles.

9



98 Weight 16,68 gr - Diameter 28 mm. Pilgrim's Holy Water Ampulla with inscription on, 10th-14th century AD. A lead-alloy ampulla with tapering body, flared neck and lateral loop handles.

9



99 Weight 13,95 gr - Diameter 38 mm. Pilgrim's Holy Water Ampulla with inscription on, 10th-14th century AD. A lead-alloy ampulla with tapering body, flared neck and lateral loop handles.

9



100 Weight 20,78 gr - Diameter 39 mm. Pilgrim's Holy Water Ampulla with inscription on, 10th-14th century AD. A lead-alloy ampulla with tapering body, flared neck and lateral loop handles.

9



101 Weight 13,72 gr - Diameter 31 mm. ANCIENT ROMAN BRONZE KEY.(3rd-4th centuries).Ae.

5



102 Weight 10,08 gr - Diameter 42 mm. ANCIENT ROMAN BRONZE KEY.(3rd-4th centuries).Ae.

5



103 Weight 7,40 gr - Diameter 43 mm. ANCIENT ROMAN BRONZE KEY.(3rd-4th centuries).Ae.

5



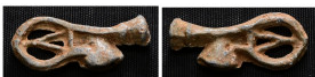
104 Weight 8,73 gr - Diameter 40 mm. ANCIENT ROMAN BRONZE KEY.(3rd-4th centuries).Ae.

5



105 Weight 13,86 gr - Diameter 43 mm. ANCIENT ROMAN BRONZE KEY.(3rd-4th centuries).Ae.

5



106 Weight 6,41 gr - Diameter 30 mm. ANCIENT ROMAN BRONZE KEY.(3rd-4th centuries).Ae.

5



107 Weight 11,30 gr - Diameter 28 mm. ANCIENT ROMAN BRONZE KEY.(3rd-4th centuries).Ae.

5



108 Weight 19,01 gr - Diameter 65 mm. ANCIENT ROMAN BRONZE KEY.(3rd-4th centuries).Ae.

5



109 Weight 8,01 gr - Diameter 37 mm. ANCIENT ROMAN BRONZE KEY.(3rd-4th centuries).Ae.

5



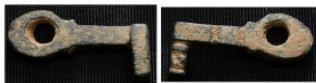
110 Weight 52,25 gr - Diameter 74 mm. ANCIENT ROMAN BRONZE KEY.(3rd-4th centuries).Ae.

5



111 Weight 3,01 gr - Diameter 31 mm. ANCIENT ROMAN BRONZE KEY.(3rd-4th centuries).Ae.

5



112 Weight 4,58 gr - Diameter 25 mm. ANCIENT ROMAN BRONZE KEY.(3rd-4th centuries).Ae.

5



113 Weight 4,14 gr - Diameter 34 mm. ANCIENT ROMAN BRONZE KEY.(3rd-4th centuries).Ae.

5



114 Weight 6,41 gr - Diameter 43 mm. ANCIENT ROMAN BRONZE KEY.(3rd-4th centuries).Ae.

5



115 Weight 13,31 gr - Diameter 47 mm. ANCIENT ROMAN BRONZE KEY.(3rd-4th centuries).Ae.

5



116 Weight 12,70 gr - Diameter 48 mm. ANCIENT ROMAN BRONZE KEY.(3rd-4th centuries).Ae.

5



117 Weight 17,29 gr - Diameter 22 mm. Ancient Bone pendant.(Century ? Byzantine Empire)

5



118 Weight 6,17 gr - Diameter 22 mm. A MESOPOTAMIAN WHITE STONE SEAL JEMDET NASR PERIOD, CIRCA 3300-2900 B.C

5



119 Weight 1,79 gr - Diameter 20 mm. Roman Bone spindle whorl weight 1-4cen.AD

5



120 Weight 4,10 gr - Diameter 49 mm.Roman Bone Ancient pendant.... Century ?

5



121 Weight 7,29 gr - Diameter 28 mm.Roman Bone spindle whorl weight 1-4cen.AD

5



122 Weight 8,40 gr - Diameter 32 mm. Roman Bone Figure... Century ?

5



123 Western Asiatic Tell Brak Eye Idol 3rd millennium BC. An alabaster idol, flat in section, with trapezoidal body and two large lentoid eyes above. Weight 52,91 gr - Diameter 50 mm. Ancient Pendant

5



124 Weight 2,68 gr - Diameter 22 mm. Ancient Figure...

5



125 Weight 3,08 gr - Diameter 25 mm. Ancient Pendant...

5



126 Weight 4,16 gr - Diameter 18 mm. Ancient Bone/Stone Seal...

5



127 Weight 6,26 gr - Diameter 21 mm. Ancient Bone/Stone Seal...

5



128 Weight 9,20 gr - Diameter 22 mm. Ancient Bone/Stone Seal...

5



129 Weight 4,29 gr - Diameter 16 mm. Ancient Bone/Stone Seal...

5



130 Weight 8,62 gr - Diameter 27 mm. Ancient Bone/Stone Seal...

5



131 Weight 14,00 gr - Diameter 30 mm. Ancient Bone/Stone Seal...

5



132 Weight 6,85 gr - Diameter 31 mm. Ancient Bone/Stone Seal...

5



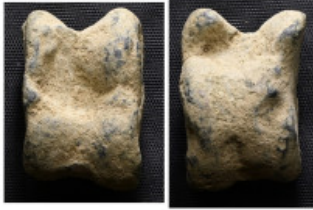
133 Weight 57,30 gr - Diameter 30 mm. Aes Premonetale. AE Knucklebone (Astragalus) 6th-4th century BC. VF. For bronze objects found with aes rude and early bars, see ICC p.83 ff. and A. M. Murgan, "Heavy metal in hallowed contexts. Continuity and change in aes deposits in Central Italy and Sicily" in "Embodying Value? The Transformation of Objects in and from the Ancient World", BAR International Series 2592, 2014

20



134 Weight 49,69 gr - Diameter 28 mm. Aes Premonetale. AE Knucklebone (Astragalus) 6th-4th century BC. VF. For bronze objects found with aes rude and early bars, see ICC p.83 ff. and A. M. Murgan, "Heavy metal in hallowed contexts. Continuity and change in aes deposits in Central Italy and Sicily" in "Embodying Value? The Transformation of Objects in and from the Ancient World", BAR International Series 2592, 2014

20



135 Weight 59,88 gr - Diameter 30 mm. Aes Premonetale. AE Knucklebone (Astragalus) 6th-4th century BC. VF. For bronze objects found with aes rude and early bars, see ICC p.83 ff. and A. M. Murgan, "Heavy metal in hallowed contexts. Continuity and change in aes deposits in Central Italy and Sicily" in "Embodying Value? The Transformation of Objects in and from the Ancient World", BAR International Series 2592, 2014

20



136 Weight 48,00 gr - Diameter 31 mm. Aes Premonetale. AE Knucklebone (Astragalus) 6th-4th century BC. VF. For bronze objects found with aes rude and early bars, see ICC p.83 ff. and A. M. Murgan, "Heavy metal in hallowed contexts. Continuity and change in aes deposits in Central Italy and Sicily" in "Embodying Value? The Transformation of Objects in and from the Ancient World", BAR International Series 2592, 2014

20



137 Weight 43,24 gr - Diameter 26 mm. Aes Premonetale. AE Knucklebone (Astragalus) 6th-4th century BC. VF. For bronze objects found with aes rude and early bars, see ICC p.83 ff. and A. M. Murgan, "Heavy metal in hallowed contexts. Continuity and change in aes deposits in Central Italy and Sicily" in "Embodying Value? The Transformation of Objects in and from the Ancient World", BAR International Series 2592, 2014

20



138 Weight 22,32 gr - Diameter 22 mm. Aes Premonetale. AE Knucklebone (Astragalus) 6th-4th century BC. VF. For bronze objects found with aes rude and early bars, see ICC p.83 ff. and A. M. Murgan, "Heavy metal in hallowed contexts. Continuity and change in aes deposits in Central Italy and Sicily" in "Embodying Value? The Transformation of Objects in and from the Ancient World", BAR International Series 2592, 2014

20



139 Weight 38,84 gr - Diameter 31 mm. Aes Premonetale. AE Knucklebone (Astragalus) 6th-4th century BC. VF. For bronze objects found with aes rude and early bars, see ICC p.83 ff. and A. M. Murgan, "Heavy metal in hallowed contexts. Continuity and change in aes deposits in Central Italy and Sicily" in "Embodying Value? The Transformation of Objects in and from the Ancient World", BAR International Series 2592, 2014

20



140 Weight 13,92 gr - Diameter 25 mm. Aes Premonetale. AE Knucklebone (Astragalus) 6th-4th century BC. VF. For bronze objects found with aes rude and early bars, see ICC p.83 ff. and A. M. Murgan, "Heavy metal in hallowed contexts. Continuity and change in aes deposits in Central Italy and Sicily" in "Embodying Value? The Transformation of Objects in and from the Ancient World", BAR International Series 2592, 2014

20



141 Western Asiatic Jewish Silver Ring. 1st-3rd Century A.D. The ring head is made of bone or ivory and contains an Aramaic inscription. Weight 7,82 gr - Diameter 26 mm.

200



142 Weight 7,72 gr - Diameter 22 mm. ANCIENT ROMAN BRONZE RING.(3rd-4th centuries).Ae.

10



143 Weight 6,01 gr - Diameter 23 mm. ANCIENT ROMAN BRONZE RING.(3rd-4th centuries).Ae.

10



144 Weight 9,87 gr - Diameter 27 mm. ANCIENT ROMAN BRONZE RING.(3rd-4th centuries).Ae.

10



145 Weight 3,90 gr - Diameter 33 mm. ANCIENT BYZANTINE BRONZE FOOT RING. CENTURY 5-10

10



146 Weight 9,42 gr - Diameter 24 mm. ANCIENT ROMAN BRONZE RING.(3rd-4th centuries).Ae.

10



147 Weight 4,24 gr - Diameter 24 mm. ANCIENT ROMAN BRONZE RING.(3rd-4th centuries).Ae.

10



148 Weight 5,75 gr - Diameter 21 mm. ANCIENT ROMAN BRONZE RING.(3rd-4th centuries).Ae.

10



149 Weight 1,04 gr - Diameter 24 mm. ANCIENT ROMAN BRONZE RING.(3rd-4th centuries).Ae.

10



150 Weight 7,76 gr - Diameter 22 mm. ANCIENT BYZANTINE BRONZE RING.CENTURY 7-10

10



151 Weight 11,17 gr - Diameter 23 mm. ANCIENT ROMAN BRONZE RING.(3rd-4th centuries).Ae.

10



152 Weight 5,53 gr - Diameter 21 mm. ANCIENT BYZANTINE BRONZE RING.CENTURY 5-10

10



153 Weight 7,00 gr - Diameter 21 mm. ANCIENT BRONZE RING.

10



154 Weight 3,26 gr - Diameter 17 mm. ANCIENT ISLAMIC BRONZE RING CENTURY CENTURY 10-12th AD.

10



155 Weight 5,79 gr - Diameter 20 mm. ANCIENT ROMAN BRONZE RING.(3rd-4th centuries).Ae.

10



156 Weight 4,82 gr - Diameter 30 mm.

10



157 Weight 9,09 gr - Diameter 38 mm. ANCIENT BYZANTINE BRONZE RING.(century 7-10) ae.

10



158 Weight 3,19 gr - Diameter 20 mm. ANCIENT ROMAN BRONZE RING.(3rd-4th centuries).Ae.

10



159 Weight 1,85 gr - Diameter 16 mm. ANCIENT ROMAN BRONZE RING.(3rd-4th centuries).Ae.

10



160 Weight 3,86 gr - Diameter 20 mm. ANCIENT BRONZE RING... Century ?

10



161 Weight 6,60 gr - Diameter 22 mm. ANCIENT ROMAN BRONZE RING.(3rd-4th centuries).Ae.

10



162 Weight 2,89 gr - Diameter 22 mm. ANCIENT ROMAN BRONZE RING.(3rd-4th centuries).Ae.

10



163 Weight 2,56 gr - Diameter 24 mm. ANCIENT ISLAMIC BRONZE RING CENTURY CENTURY 10-12 TH. (Pendant)

10



164 Weight 3,01 gr - Diameter 17 mm. ANCIENT ISLAMIC BRONZE RING CENTURY CENTURY 10-12 TH.

10



165 Weight 4,37 gr - Diameter 21 mm. ANCIENT ROMAN BRONZE RING.(3rd-4th centuries).Ae. GREEN GEMSTONE

10



166 Weight 1,01 gr - Diameter 18 mm. ANCIENT ROMAN BRONZE RING.(3rd-4th centuries).Ae. RED GEMSTONE

10



167 Weight 5,40 gr - Diameter 22 mm. ANCIENT BRONZE RING... Unknown century...

10



168 Weight 2,01 gr - Diameter 19 mm. ANCIENT ROMAN BRONZE RING.(3rd-4th centuries).Ae.

10



169 Weight 2,71 gr - Diameter 20 mm. ANCIENT ROMAN BRONZE RING.(3rd-4th centuries).Ae.

10



170 Weight 14,44 gr - Diameter 26 mm. ANCIENT BYZANTINE RING.

10



171 Weight 3,45 gr - Diameter 19 mm. ANCIENT ROMAN SILVER RING.(3rd-4th centuries)

10



172 Weight 7,93 gr - Diameter 23 mm. ANCIENT ROMAN SILVER RING.(3rd-4th centuries)

10



173 Weight 2,94 gr - Diameter 19 mm. ANCIENT BYZANTINE BRONZE RING.

10



174 Weight 8,50 gr - Diameter 24 mm. ANCIENT BYZANTINE BRONZE RING.

10



175 Weight 4,32 gr - Diameter 27 mm. ANCIENT ROMAN BRONZE RING.(3rd-4th centuries).Ae.

10



176 Weight 2,46 gr - Diameter 19 mm. ANCIENT BYZANTINE BRONZE RING

10



177 Weight 6,43 gr - Diameter 20 mm. ANCIENT BYZANTINE BRONZE RING

10



178 Weight 3,11 gr - Diameter 20 mm. ANCIENT ROMAN BRONZE RING.(3rd-4th centuries).Ae.

10



179 Weight 4,79 gr - Diameter 22 mm. ANCIENT ROMAN BRONZE RING.(3rd-4th centuries).Ae.

10



180 Weight 7,00 gr - Diameter 23 mm. ANCIENT BRONZE RING... PERIOD ISLAMIC ?

10



181 Weight 3,49 gr - Diameter 18 mm. ANCIENT ROMAN BRONZE RING.(3rd-4th centuries).Ae.

10



182 Weight 3,34 gr - Diameter 19 mm. ANCIENT BYZANTINE BRONZE RING.

10



183 Weight 7,20 gr - Diameter 21 mm. ANCIENT BYZANTINE BRONZE RING.

10



184 Weight 7,38 gr - Diameter 22 mm. ANCIENT BYZANTINE BRONZE RING.

10



185 Weight 4,62 gr - Diameter 21 mm. ANCIENT BYZANTINE BRONZE RING.

10



186 Weight 6,09 gr - Diameter 23 mm. ANCIENT BYZANTINE BRONZE RING.

10



187 Weight 1,03 gr - Diameter 17 mm. ANCIENT ROMAN BRONZE RING.(3rd-4th centuries).Ae.

10



188 Weight 5,07 gr - Diameter 22 mm. ANCIENT BYZANTINE BRONZE RING,

10



189 Weight 4,44 gr - Diameter 22 mm. ANCIENT BYZANTINE BRONZE RING.

10



190 Weight 4,12 gr - Diameter 19 mm. ANCIENT BRONZE RING. PERIOD (islamic ?)

10



191 Weight 1,91 gr - Diameter 18 mm. ANCIENT ROMAN BRONZE RING.(3rd-4th centuries).Ae.

10



192 Weight 9,15 gr - Diameter 23 mm. ANCIENT BYZANTINE BRONZE RING.

10



193 Weight 4,79 gr - Diameter 20 mm. ANCIENT ROMAN BRONZE RING.(3rd-4th centuries).Ae.

10



194 Weight 2,13 gr - Diameter 18 mm. ANCIENT ROMAN BRONZE RING.(3rd-4th centuries).Ae.

10



195 Weight 3,28 gr - Diameter 19 mm. ANCIENT ROMAN BRONZE RING.(3rd-4th centuries).Ae.

10



196 Weight 2,95 gr - Diameter 21 mm. ANCIENT ROMAN BRONZE RING.(3rd-4th centuries).Ae.

10



197 Weight 1,33 gr - Diameter 20 mm. ANCIENT BRONZE RING.

10



198 Weight 3,39 gr - Diameter 22 mm. ANCIENT ROMAN BRONZE RING.(3rd-4th centuries).Ae.

10



199 Weight 0,81 gr - Diameter 12 mm. ANCIENT ROMAN SILVER RINGS. 2 Pieces

10



200 Weight 8,54 gr - Diameter 28 mm. ANCIENT BYZANTINE BRONZE RING.

10



201 Weight 7,15 gr - Diameter 21 mm. ANCIENT BYZANTINE BRONZE RING.

10



202 Weight 12,07 gr - Diameter 23 mm. ANCIENT BYZANTINE BRONZE RING.

10



203 Weight 7,55 gr - Diameter 22 mm. ANCIENT BYZANTINE BRONZE RING.

10



204 Weight 6,44 gr - Diameter 23 mm. ANCIENT ROMAN BRONZE RING.(3rd-4th centuries).Ae.

10



205 Weight 5,54 gr - Diameter 23 mm. ANCIENT ROMAN SILVER RING.(3rd-4th centuries)

10



206 Weight 17,42 gr - Diameter 35 mm. ANCIENT BYZANTINE BRONZE RING.

10



207 Weight 8,45 gr - Diameter 23 mm. ANCIENT ROMAN BRONZE RING.(3rd-4th centuries).Ae.

10



208 Weight 3,05 gr - Diameter 20 mm. ANCIENT GREEK BRONZE RING.

10



209 Weight 5,84 gr - Diameter 22 mm. ANCIENT BYZANTINE BRONZE RING.

10



210 Weight 3,00 gr - Diameter 19 mm. ANCIENT ROMAN SILVER RING.(3rd-4th centuries)

10



211 Weight 8,31 gr - Diameter 23 mm. ANCIENT ROMAN BRONZE RING.(3rd-4th centuries).Ae.

10



212 Weight 7,35 gr - Diameter 22 mm. ANCIENT BYZANTINE BRONZE RING.

10



213 Weight 2,89 gr - Diameter 19 mm. ANCIENT ISLAMIC BRONZE RING.

10



214 Weight 7,27 gr - Diameter 20 mm. ANCIENT BYZANTINE BRONZE RING.

10



215 Weight 4,32 gr - Diameter 21 mm. ANCIENT ROMAN BRONZE RING.(3rd-4th centuries).Ae. GEMSTONE

10



216 Weight 3,54 gr - Diameter 30 mm. ANCIENT BYZANTINE BRONZE RING.

10



217 Weight 2,95 gr - Diameter 23 mm. ANCIENT ROMAN BRONZE RING.(3rd-4th centuries).Ae.

10



218 Weight 3,17 gr - Diameter 19 mm. ANCIENT BYZANTINE BRONZE RING.

10



219 Weight 5,55 gr - Diameter 19 mm. ANCIENT BYZANTINE BRONZE RING.

10



220 Weight 1,59 gr - Diameter 22 mm. ANCIENT ROMAN BRONZE RING.(3rd-4th centuries).Ae. Gemstone

10



221 Weight 6,17 gr - Diameter 26 mm. ANCIENT GREEK BRONZE RING.

10



222 Weight 2,06 gr - Diameter 16 mm. ANCIENT ROMAN BRONZE RING.(3rd-4th centuries).Ae.

10



223 Weight 3,05 gr - Diameter 19 mm. ANCIENT BYZANTINE BRONZE RING.

10



224 Weight 7,28 gr - Diameter 21 mm. ANCIENT BYZANTINE BRONZE RING.

10



225 Weight 2,81 gr - Diameter 22 mm. ANCIENT ROMAN BRONZE RING.(3rd-4th centuries).Ae. RED GHEMSTONE

10



226 Weight 3,88 gr - Diameter 20 mm. ANCIENT BYZANTINE BRONZE RING.

10



227 Weight 7,06 gr - Diameter 20 mm. ANCIENT ROMAN BRONZE RING.(3rd-4th centuries).Ae.

10



228 Weight 4,19 gr - Diameter 17 mm. ANCIENT BRONZE RING... CENTURY PERIOD BYZANTINE ?

10



229 Weight 6,58 gr - Diameter 21 mm. ANCIENT BYZANTINE EMPIRE BRONZE RING.

10



230 Weight 4,16 gr - Diameter 21 mm. ANCIENT BYZANTINE BRONZE RING.

10



231 Weight 5,18 gr - Diameter 18 mm. ANCIENT ISLAMIC BRONZE RING. Period eyyubi ?

10



232 Weight 5,14 gr - Diameter 23 mm. ANCIENT BRONZE RING.

10



233 Weight 6,68 gr - Diameter 22 mm. ANCIENT BYZANTINE BRONZE RING.

10



234 Weight 5,50 gr - Diameter 20 mm. ANCIENT BYZANTINE BRONZE RING.

10



235 25 pieces of rings. Sold as seen. No return.

10



236 20 pieces of rings. Sold as seen. No return.

10



237 20 pieces of rings. Sold as seen. No return.

10



238 20 pieces of rings. Sold as seen. No return.

10



239 20 pieces of rings. Sold as seen. No return.

10



240 20 pieces of rings. Sold as seen. No return.

10



241 20 pieces of rings. Sold as seen. No return.

10



242 20 pieces of rings. Sold as seen. No return.

10



243 25 pieces of rings. Sold as seen. No return.

10



244 20 pieces of rings. Sold as seen. No return.

10



245 32 pieces of rings. Sold as seen. No return.

10



246 20 pieces of rings. Sold as seen. No return.

10



247 25 pieces of rings. Sold as seen. No return.

10



248 20 pieces of rings. Sold as seen. No return.

10



249 20 pieces of rings. Sold as seen. No return.

10



250 77 pieces of rings. Sold as seen. No return.

10



251 20 pieces of rings. Sold as seen. No return.

10



252 20 pieces of rings. Sold as seen. No return.

10



253 4 pieces of rings. Sold as seen. No return.

10



254 20 pieces of rings. Sold as seen. No return.

10



255 25 pieces of rings. Sold as seen. No return.

10



256 20 pieces of rings. Sold as seen. No return.

10



257 20 pieces of rings. Sold as seen. No return.

10



258 25 pieces of rings. Sold as seen. No return.

10



259 20 pieces of rings. Sold as seen. No return.

10



260 20 pieces of rings. Sold as seen. No return.

10



261 25 pieces of rings. Sold as seen. No return.

10



262 50 pieces of rings. Sold as seen. No return.

10



263 33 pieces of rings. Sold as seen. No return.

10



264 5 pieces of rings. Sold as seen. No return.

10



265 Weight 3,22 gr - Diameter 21 mm. ANCIENT ROMAN SILVER RING.(3rd-4th century).Ar.

10



266 Weight 1,17 gr - Diameter 13 mm. ANCIENT ROMAN SILVER RING.(3rd-4th century).Ar.

10



267 Weight 2,50 gr - Diameter 18 mm. ANCIENT GREEK SILVER RING.

10



268 Weight 12,40 gr - Diameter 22 mm. ANCIENT BYZANTINE SILVER RING.

10



269 Weight 2,24 gr - Diameter 18 mm. ANCIENT ROMAN SILVER RING.(3rd-4th century).Ar.

10



270 Weight 9,90 gr - Diameter 28 mm. ANCIENT BYZANTINE SILVER RING. AR

400



271 Weight 6,01 gr - Diameter 21 mm. ANCIENT SILVER RING.

10



272 Weight 15,36 gr - Diameter 29 mm. ANCIENT SILVER RING.

10



273 Weight 3,00 gr - Diameter 22 mm. ANCIENT ISLAMIC SILVER RING. AR

10



274 Weight 2,91 gr - Diameter 22 mm. ANCIENT SILVER RING. PERIOD GREEK ?

10



275 Weight 1,03 gr - Diameter 18 mm. ANCIENT SILVER RING.

10



276 Weight 4,00 gr - Diameter 28 mm. ANCIENT ISLAMIC SILVER RING. AR

10



277 Weight 4,19 gr - Diameter 24 mm. ANCIENT BYZANTINE SILVER RING. AR

10



278 Weight 9,36 gr - Diameter 20 mm. ANCIENT BYZANTINE SILVER RING. AR

10



279 Weight 4,77 gr - Diameter 17 mm. ANCIENT ROMAN SILVER RING.(3rd-4th century).Ar.

10



280 Weight 12,32 gr - Diameter 25 mm. ANCIENT SILVER RING.
PERIOD ARMANIE ? AR

10



281 Weight 7,85 gr - Diameter 27 mm. ANCIENT BYZANTINE
SILVER RING. AR

10



282 Weight 4,53 gr - Diameter 27 mm. ANCIENT ISLAMIC (
OTTOMAN) SILVER RING. AR RED GEMSOTNE

10



283 Weight 3,53 gr - Diameter 19 mm. ANCIENT BYZANTINE
SILVER RING. WITH OUT STONE.

10



284 Weight 1,96 gr - Diameter 20 mm. ANCIENT GREEK SILVER
AND GOLD RING. AR-AB

10



285 Weight 0,83 gr - Diameter 8 mm. ANCIENT ARMANIE SILVER
RINGHEAD.

10



286 Weight 3,87 gr - Diameter 14 mm. ANCIENT GREEK
BRONZE RINGHEAD.

10



287 Weight 2,21 gr - Diameter 16 mm. ANCIENT ISLAMIC BRONZE RINGHEAD.

10



288 Weight 0,25 gr - Diameter 7 mm. ANCIENT ROMAN BRONZE RINGHEAD. (3RD-4TH CENTURY) AR

10



289 Weight 1,29 gr - Diameter 11 mm. ANCIENT ROMAN BRONZE RINGHEAD. (3RD-4TH CENTURY) AR

10



290 Weight 1,73 gr - Diameter 10 mm. ANCIENT BYZANTINE SILVER RINGHEAD.

10



291 Weight 0,63 gr - Diameter 14 mm. ANCIENT ROMAN RINGHEAD. (3RD-4TH CENTURY)

10



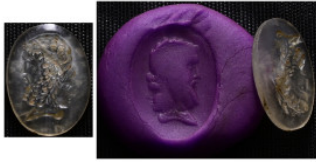
292 Weight 2,14 gr - Diameter 18 mm. ANCIENT RED GEMSTONE ROMAN PERIOD (3RD-4TH CENTURY)

10



293 Weight 1,03 gr - Diameter 15 mm. ANCIENT ISLAMIC RED GEMSTONE. PERIOD OTTOMAN.

10



294 Weight 0,70 gr - Diameter 15 mm. ANCIENT ROMAN GEMSTONE.

10



295 Weight 1,26 gr - Diameter 12 mm. ANCIENT ROMAN GEMSTONE.

10



296 Weight 0,86 gr - Diameter 13 mm. ANCIENT RED GEMSTONE ROMAN PERIOD (3RD-4TH CENTURY) (RINGHEAD)

10



297 Weight 0,47 gr - Diameter 11 mm. ANCIENT BLACK GEMSTONE ROMAN PERIOD (3RD-4TH CENTURY) (RINGHEAD)

10



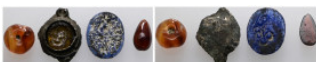
298 Weight 0,50 gr - Diameter 10 mm. ANCIENT RED GEMSTONE ROMAN PERIOD (3RD-4TH CENTURY) (RINGHEAD)

10



299 Weight 0,77 gr - Diameter 11 mm. ANCIENT RED GEMSTONE ROMAN PERIOD (3RD-4TH CENTURY) (RINGHEAD)

10



300 4 pieces of gem stones. Sold as seen. No return.

10



301 Weight 0,49 gr - Diameter 13 mm. ANCIENT BLUE GEMSTONE ROMAN PERIOD (3RD-4TH CENTURY) (RINGHEAD)

10



302 Weight 3,60 gr - Diameter 15 mm. ANCIENT ROMAN SILVER EARRING)3RD-4TH CENTURY)

5



303 Weight 1,93 gr - Diameter 60 mm. ANCIENT BYZANTINE EARRING.

5



304 Weight 2,78 gr - Diameter 40 mm. ANCIENT EARRING.

5



305 Weight 2,41 gr - Diameter 11 mm. ANCIENT ROMAN SILVER EARRING)3RD-4TH CENTURY)

5



306 Weight 5,90 gr - Diameter 42 mm. ANCIENT ROMAN BRONZE EARRING)3RD-4TH CENTURY) AR

5



307 2 pieces of Earrings. Sold as seen. No return. ANCIENT EARRING.

5



308 Weight 8,78 gr - Diameter 43 mm. ANCIENT BYZANTINE BRONZE PENDANT. AR

5



309 Weight 8,76 gr - Diameter 22 mm. ANCIENT ROMAN BRONZE PENDANT (3RD-4TH CENTURY) AR CATTLE FOOT

5



310 Weight 11,34 gr - Diameter 22 mm. ANCIENT ROMAN BRONZE PENDANT (3RD-4TH CENTURY) AR

5



311 Weight 4,07 gr - Diameter 33 mm. ANCIENT BYZANTINE BRONZE PENDANT.

5



312 Weight 1,76 gr - Diameter 66 mm. ANCIENT BYZANTINE SILVER PENDANT.

5



313 Weight 10,00 gr - Diameter 37 mm. ANCIENT BRONZE PENDANT. AR

5



314 Weight 1,18 gr - Diameter 15 mm. ANCIENT SELCUQ PERIOD BRONZE PENDANT. AR

5



315 Weight 0,88 gr - Diameter 32 mm. ANCIENT BYZANTINE SILVER PENDANT.

5



316 Weight 16,90 gr - Diameter 65 mm. ANCIENT PENDANT. AR

5



317 Weight 5,34 gr - Diameter 19 mm. ANCIENT ROMAN BRONZE PENDANT. AR

5



318 Weight 19,18 gr - Diameter 32 mm. ANCIENT ROMAN BRONZE FIGURE PENDANT (3RD-4TH CENTURY) AR

5



319 Weight 7,92 gr - Diameter 42 mm. ANCIENT ISLAMIC PERIOD BRONZE PENDANT. AR

5



320 Weight 13,44 gr - Diameter 32 mm. ANCIENT ROMAN BRONZE FIGURE PENDANT (3RD-4TH CENTURY) AR

5



321 Weight 24,25 gr - Diameter 37 mm. ANCIENT GREEK BRONZE PENDANT.

5



322 Weight 18,18 gr - Diameter 30 mm. ANCIENT ROMAN BRONZE FIGURE PENDANT (3RD-4TH CENTURY) AR

5



323 Weight 1,62 gr - Diameter 22 mm. ANCIENT BRONZE FOOT AND SEAL PENDANT.

5



324 Weight 12,00 gr - Diameter 49 mm. ANCIENT BYZANTINE BRONZE PENDANT.

5



325 Weight 20,14 gr - Diameter 59 mm. ANCIENT BYZANTINE BRONZE PENDANT

5



326 Weight 4,11 gr - Diameter 25 mm. ANCIENT ROMAN BRONZE PENDANT (3RD-4TH CENTURY) AR

5



327 Weight 18,60 gr - Diameter 31 mm. ANCIENT ROMAN BRONZE FIGURE PENDANT (3RD-4TH CENTURY) AR

5



328 Weight 2,53 gr - Diameter 16 mm. ANCIENT PENDANT

5



329 Weight 10,79 gr - Diameter 43 mm. ANCIENT BYZANTINE BRONZE PENDANT. AR

5



330 Weight 10,68 gr - Diameter 42 mm. ANCIENT BYZANTINE BRONZE PENDANT. AR

5



331 Weight 4,99 gr - Diameter 55 mm. ANCIENT BYZANTINE BRONZE PENDANT. AR

5



332 Weight 10,77 gr - Diameter 21 mm. ANCIENT ROMAN BRONZE FIGURE PENDANT (3RD-4TH CENTURY) AR

5



333 Weight 12,46 gr - Diameter 43 mm. ANCIENT BYZANTINE BRONZE PENDANT. AR

5



334 Weight 6,21 gr - Diameter 33 mm. ANCIENT BRONZE PENDANT. AR

5



335 Weight 12,62 gr - Diameter 32 mm. ANCIENT ROMAN BRONZE FIGURE PENDANT (3RD-4TH CENTURY) AR

5



336 Weight 1,23 gr - Diameter 21 mm. ANCIENT ROMAN SILVER PENDANT. 3RD-4TH CENTURY.

5



337 Weight 5,28 gr - Diameter 37 mm. ANCIENT BYZANTINE BRONZE PENDANT. AR

5



338 Weight 1,94 gr - Diameter 31 mm. ANCIENT ROMAN SILVER AND GOLD PENDANT (3RD-4TH CENTURY) SILVER AND GOLD

5



339 Weight 4,00 gr - Diameter 40 mm. ANCIENT GREEK BRONZE PENDANT. CENTURY ? AR

5



340 Weight 16,38 gr - Diameter 37 mm. ANCIENT GREEK BRONZE PENDANT. CENTURY ? AR

5



341 Weight 11,32 gr - Diameter 42 mm. ANCIENT BYZANTINE BRONZE PENDANT. AR

5



342 Weight 8,48 gr - Diameter 20 mm. ANCIENT ROMAN BRONZE FIGURE PENDANT (3RD-4TH CENTURY) AR

5



343 Weight 24,21 gr - Diameter 59 mm. ANCIENT BYZANTINE BRONZE PENDANT. AR

5



344 Weight 14,48 gr - Diameter 38 mm. ANCIENT ROMAN BRONZE FIGURE PENDANT (3RD-4TH CENTURY) AR

5



345 Weight 16,01 gr - Diameter 33 mm. ANCIENT ROMAN BRONZE PENDANT (3RD-4TH CENTURY) AR

5



346 Weight 6,35 gr - Diameter 23 mm. ANCIENT GREEK BRONZE PENDANT. CENTURY ?

5



347 Weight 6,56 gr - Diameter 29 mm. ANCIENT ISLAMIC OTTOMAN COIN PENDANT. AR

5



348 Weight 3,51 gr - Diameter 31 mm. ANCIENT BYZANTINE BRONZE PENDANT. AR

5



349 Weight 2,12 gr - Diameter 25 mm. ANCIENT BRONZE PENDANT. AR

5



350 Weight 2,51 gr - Diameter 32 mm. ANCIENT BYZANTINE EMPIRE CROSS PENDANT. Century 7-10. AR

5



351 2 pieces of pendants. Sold as seen. No return.

5



352 Weight 6,00 gr - Diameter 20 mm. ANCIENT ROMAN BRONZE FIGURE PENDANT (3RD-4TH CENTURY) AR

5



353 Weight 2,64 gr - Diameter 18 mm. ANCIENT ROMAN BRONZE FIGURE PENDANT (3RD-4TH CENTURY) AR

5



354 Weight 7,26 gr - Diameter 34 mm. ANCIENT BRONZE PENDANT

5



355 Weight 1,60 gr - Diameter 27 mm. ANCIENT GREEK BRONZE PENDANT. AR

5



356 Weight 9,51 gr - Diameter 17 mm. ANCIENT BRONZE PENDANT. AR

5



357 Weight 1,57 gr - Diameter 20 mm. ANCIENT BYZANTINE LEAD PENDANT.

5



358 Weight 23,68 gr - Diameter 50 mm. ANCIENT PENDANT.

5



359 Weight 17,11 gr - Diameter 41 mm. ANCIENT BYZANTINE BRONZE PENDANT. AR

5



360 Weight 4,32 gr - Diameter 26 mm. ANCIENT BYZANTINE BRONZE PENDANT. AR

5



361 Weight 7,36 gr - Diameter 35 mm. ANCIENT BYZANTINE BRONZE PENDANT. AR

5



362 Weight 6,12 gr - Diameter 21 mm. ANCIENT ROMAN BRONZE FIGURE PENDANT (3RD-4TH CENTURY) AR

5



363 Weight 8,00 gr - Diameter 32 mm. ANCIENT BYZANTINE BRONZE PENDANT. AR

5



364 Weight 9,76 gr - Diameter 32 mm. ANCIENT BYZANTINE BRONZE PENDANT. AR

5



365 Weight 1,77 gr - Diameter 24 mm. ANCIENT ROMAN BRONZE PENDANT (3RD-4TH CENTURY) AR

5



366 Weight 23,13 gr - Diameter 44 mm. ANCIENT BYZANTINE BRONZE PENDANT. AR

5



367 Weight 10,41 gr - Diameter 39 mm. ANCIENT BYZANTINE BRONZE PENDANT. AR

5



368 Weight 9,62 gr - Diameter 28 mm. ANCIENT ROMAN BRONZE FIGURE PENDANT (3RD-4TH CENTURY) AR

5



369 Weight 1,43 gr - Diameter 25 mm. ANCIENT ROMAN BRONZE PENDANT (3RD-4TH CENTURY) AR

5



370 Weight 21,58 gr - Diameter 45 mm. ANCIENT BYZANTINE BRONZE CROSS PENDANT. AR

5



371 Weight 1,75 gr - Diameter 70 mm. ANCIENT SILVER PENDANT.

5



372 Weight 16,40 gr - Diameter 31 mm. ANCIENT BRONZE PENDANT. AR

5



373 Weight 3,62 gr - Diameter 19 mm. ANCIENT LEAD PENDANT. Century ?

5



374 Weight 0,86 gr - Diameter 22 mm. ANCIENT SILVER PENDANT.

5



375 Weight 7,46 gr - Diameter 46 mm. ANCIENT BRONZE PENDANT. AR

5



376 Weight 10,43 gr - Diameter 26 mm. ANCIENT ROMAN BRONZE FIGURE PENDANT (3RD-4TH CENTURY) AR

5



377 Weight 6,12 gr - Diameter 35 mm. ANCIENT BRONZE AMULET PENDANT.

5



378 Weight 13,07 gr - Diameter 42 mm. ANCIENT BYZANTINE EMPIRE BRONZE PENDANT. AR

5



379 Weight 5,30 gr - Diameter 25 mm. ANCIENT ROMAN PERIOD BRONZE PENDANT. 3RD-4TH) CENTURY. AR

5



380 Weight 13,29 gr - Diameter 33 mm. ANCIENT ROMAN BRONZE FIGURE PENDANT. 3RD - 4TH CENTURY. AR

5



381 Weight 8,13 gr - Diameter 34 mm. ANCIENT ROMAN PERIOD BRONZE FIGURE PENDANT. 3RD- 4TH CENTURY. AR

5



382 Weight 8,73 gr - Diameter 23 mm. ANCIENT ROMAN BRONZE FIGURE PENDANT HAND AND EGG. 3RD-4TH CENTURY. AR

5



383 8 pieces of pendants. Sold as seen. No return.

5



384 Weight 5,37 gr - Diameter 34 mm. ANCIENT BYZANTINE EMPIRE BRONZE CROSS PENDANT. AR

5



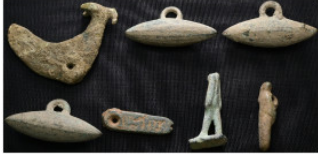
385 18 pieces of pendants. Sold as seen. No return.

5



386 3 pieces of pendants. Sold as seen. No return.

5



387 7 pieces of pendants. Sold as seen. No return.

5



388 6 pieces of pendants. Sold as seen. No return.

5



389 Weight 1,22 gr - Diameter 18 mm. ANCIENT BYZANTINE EMPIRE SILVER AMULET PENDANT.

10



390 Weight 2,88 gr - Diameter 20 mm. ANCIENT SPAIN SILVER COIN PENDANT.

10



391 Weight 2,27 gr - Diameter 17 mm. ANCIENT SILVER PENDANT.

10



392 Weight 6,55 gr - Diameter 29 mm. ANCIENT GREEK SILVER PENDANT.

10



393 Weight 1,12 gr - Diameter 17 mm. ANCIENT BYZANTINE SILVER PENDANT.

10



394 Weight 0,75 gr - Diameter 11 mm. ANCIENT SILVER FIGURE PENDANT.

10



395 Weight 0,36 gr - Diameter 5 mm. ANCIENT GREEK SILVER RING PENDANT.

10



396 Weight 1,94 gr - Diameter 18 mm. ANCIENT GREEK SILVER PENDANT.

10



397 Weight 1,48 gr - Diameter 16 mm. ANCIENT GREEK SILVER PENDANT.

10



398 Weight 1,97 gr - Diameter 13 mm. ANCIENT ROMAN GOLD RINGHEAD AND RED GEMSTONE. 3rd-4th. Century.

50



399 Greek Gold ring with Red Gemstone. Flower embellishments on the ring. A winged animal rises and Cornucopiae rise on altar, 2 branches flanking. Weight 2,19 gr - Diameter 19 mm.

50



400 Weight 0,94 gr - Diameter 11 mm. ANCIENT BYZANTINE EMPIRE GOLD RING.

50



401 Byzantine Gold Ring with Cruciform Monogram Early Byzantine, mid-6th - 7th century A gold ring with hoop in round section, which is slightly flattened on top to support the deep round bezel. On this is engraved (originally with niello inlay) a cruciform monogram with four Greek with encrypted name of the owner, " ΓεωργΙΟΥ" Georgiou. Weight 4,05 gr - Diameter 22 mm.

500



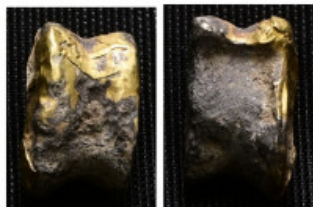
402 Weight 1,34 gr - Diameter 15 mm. ANCIENT GOLD-RED GEM STONE.

50



403 Weight 1,47 gr - Diameter 18 mm. ANCIENT BYZANTINE EMPIRE GOLD RING.

50



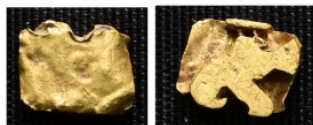
404 Weight 4,99 gr - Diameter 14 mm. ANCIENT GOLD PLATED KNUCKLE BONE. 6th-4th century

50



405 Weight 0,87 gr - Diameter 19 mm. ANCIENT ROMAN GOLD RING. 3RD-4TH CENTURY.

50



406 Weight 0,55 gr - Diameter 8 mm. ANCIENT GOLD

50



407 Weight 1,03 gr - Diameter 11 mm. ANCIENT BYZANTINE EMPIRE GOLD.

50



408 Weight 1,12 gr - Diameter 11 mm. ANCIENT GOLD AND RED GEMSTONE.

50



409 Hellenistic gold bead (a fragment of jewelry) (300 BC-200 BC). Weight 0,12 gr - Diameter 2 mm.

50



410 Roman Gold Earring with Grape Bunch Drop. 1st-3rd century AD. Weight 1,75 gr - Diameter 19 mm.

50



411 Weight 1,82 gr - Diameter 20 mm. ANCIENT BYZANTINE EMPIRE GOLD PENDANT.. VERY GOOD CONDITION.

50



412 Weight 15,11 gr - ANCIENT ROMAN PENDANT GOLD AND BRONZE AND BLUE SCARAB IN IT.

50



413 Weight 14,95 gr - Diameter 50 mm. ANCIENT BYZANTINE EMPIRE BRONZE BRACELET. AR

10



414 Weight 12,19 gr - Diameter 58 mm. ANCIENT ROMAN BRONZE BRACELET.(1st- 3rd).AR

10



415 Weight 14,82 gr - Diameter 60 mm. ANCIENT BYZANTINE EMPIRE BRONZE BRACELET. AR

10



416 Weight 26,72 gr - Diameter 70 mm. ANCIENT GREEK BRONZE BRACELET. AR

10



417 Weight 18,69 gr - Diameter 61 mm. ANCIENT BYZANTINE EMPIRE BRONZE BRACELET. AR

10



418 Weight 8,26 gr - Diameter 48 mm. ANCIENT ROMAN BRONZE BRACELET.(1st- 3rd).AR

10



419 Weight 7,64 gr - Diameter 51 mm. ANCIENT BYZANTINE EMPIRE BRONZE BRACELET. AR

10



420 Weight 35,42 gr - Diameter 59 mm. ANCIENT ROMAN BRONZE BRACELET.(1st- 3rd).AR

10



421 Weight 19,69 gr - Diameter 56 mm. ANCIENT BYZANTINE EMPIRE BRONZE BRACELET. AR

10



422 Weight 7,22 gr - Diameter 30 mm. ANCIENT BYZANTINE EMPIRE BRONZE BRACELET. AR

10



423 Weight 9,88 gr - Diameter 60 mm. ANCIENT ROMAN BRONZE BRACELET.(1st- 3rd).AR

10



424 Weight 11,73 gr - Diameter 0000000000 mm. ANCIENT BYZANTINE EMPIRE SILVER BRACELET.

10



425 Weight 77,67 gr - Diameter 64 mm. ANCIENT ROMAN BRONZE BRACELET.(1st- 3rd).AR

10



426 Weight 11,41 gr - Diameter 30 mm. ANCIENT BYZANTINE EMPIRE PERFUME AMPULLA..

10



427 Weight 54,36 gr - Diameter 65 mm. ANCIENT GREEK/ROMAN PERIOD PERFUME AMPULLA.

10



428 Weight 29,81 gr - Diameter 90 mm. ANCIENT GREEK GOLD PLATED-BRONZE FIBULA.(4th-3th Century BC)

10



429 Weight 46,86 gr - Diameter 85 mm. ANCIENT GREEK BRONZE FIBULA.(4th-3th Century BC).

10



430 Weight 39,58 gr - Diameter 72 mm. ANCIENT GREEK BRONZE FIBULA.(4th-3th Century BC).

10



431 Weight 5,37 gr - Diameter 32 mm. ANCIENT GREEK BRONZE FIBULA.(4th-3th Century BC).

10



432 Weight 66,57 gr - Diameter 67 mm. ANCIENT GREEK BRONZE FIBULA.(4th-3th Century BC).

10



433 Weight 11,32 gr - Diameter 30 mm. ANCIENT ROMAN BRONZE FIBULA.

10



434 Weight 2,78 gr - Diameter 43 mm. ANCIENT GREEK BRONZE FIBULA.(4th-3th Century BC).

10



435 12 pieces of fibulas. Sold as seen. No return.

10



436 7 pieces, sold as seen. No return.

10



437 11 pieces, sold as seen. No return.

10



438 20 pieces of cufflinks. Sold as seen. No return.

10



439 35 pieces of cufflinks. Sold as seen. No return.

10



440 20 pieces of cufflinks. Sold as seen. No return.

10



441 Weight 16,15 gr - Diameter 45 mm. ROMAN. Imperio Romano. Bronze Figure. AR

10



442 Weight 13,11 gr - Diameter 37 mm. Bronze Age Luristan Bronze Ibex Figurine. AR

10



443 Weight 132,88 gr - Diameter 112 mm. GREEK BRONZE FIGURE OF A KOUROS, 2ND HALF OF THE 6TH CENTURY B.C.

10



444 Weight 14,01 gr - Diameter 43 mm. ANCIENT GREEK BRONZE FIGURE.

10



445 Weight 5,86 gr - Diameter 30 mm. ANCIENT Roman Style/Type Bronze Zoomorphic Brooch-Peacock.

10



446 Weight 41,17 gr - Diameter 39 mm. ANCIENT ROMAN BRONZE EAGLE, 1st-2nd century AD

10



447 Weight 58,11 gr - Diameter 62 mm. ANCIENT ROMAN BRONZE FIGURE, 3RD-4TH CENTURY

10



448 Weight 78,36 gr - Diameter 75 mm. ANCIENT ROMAN BRONZE NUDE FEMALE FIGURE. 3RD-4TH CENTURY.

10



449 Weight 27,41 gr - Diameter 60 mm. ANCIENT ROMAN BRONZE LEO BELT BUCKLE.

10



450 Weight 15,68 gr - Diameter 33 mm ROMAN PERIOD. C. 2ND - 4TH CENTURY AD. LEAD PLAQUE

10



451 Weight 6,96 gr - Diameter 42 mm. ANCIENT BRONZE FIGURE...

10



452 Weight 6,77 gr - Diameter 61 mm. Antique bronze figure of an egg with hand up and on tiptoe. Roman period..

10



453 Weight 7,67 gr - Diameter 37 mm. ANCIENT BRONZE LEO FIGURE..

10



454 Weight 21,00 gr - Diameter 30 mm. ANCIENT LEAD FIGURE.

10



455 Weight 31,12 gr - Diameter 39 mm. ROMAN Statuette - Bronze YOUNG SATYR Figurine - Circa 100-300 AD - 804

10



456 Weight 21,69 gr - Diameter 33 mm. Bronze handle with a male head applique 1st - 3rd century AD

10



457 Weight 43,07 gr - Diameter 75 mm. Asia Minor, Turkey Anatolian, ca. 7th century BCE. Wrought solid cast bronze miniature idole depicting four contigous figures standing side by side with characteristically abstract heads and bodies. Ancient anatolia served as a geographical link between Europe and asia, and anatoliaans created some of the finest works from the bronze age with expert artistry and craftsmanship as we see in this example. RARE ANATOLIAN BRONZE AMULET - FAMILY OF FOUR

10



458 Weight 164,23 gr - Diameter 192 mm. ANCIENT BRONZE FIGURE. Century ?

10



459 Weight 3,67 gr - Diameter 31 mm. ANCIENT ROMAN BRONZE APLIQUE.(1st-2nd century).Ae.

10



460 Weight 19,22 gr - Diameter 34 mm. Ancient Roman Bronze Legionary Eagle. Symbol of the Imperial Military Power.

10



461 Weight 5,84 gr - Diameter 32 mm. Ancient Roman Bronze Legionary Bronze Brooch shaped as a Lion the Symbol of IVth Legion "Flavia Felix" Legio quarta Flavia Felix ("Lucky Flavian Fourth Legion") , was a legion of the Imperial Roman army founded in AD 70 by the emperor Vespasian (r. 69-79 AD) from the cadre of the disbanded Legio IV Macedonica because they took the side of the Emperor Vitellius in the Civil war of 69 AD. The legion was active in Moesia Superior in the first half of the 5th century. The legion symbol was a lion.

10



462 Weight 34,40 gr - Diameter 43 mm. Ancient Roman Bronze RAM figurine. 3rd-4th century. AR

10



463 Weight 46,44 gr - Diameter 50 mm. ANCIENT BRONZE FIGURE.. Century ?

10



464 Weight 8,19 gr - Diameter 42 mm. Roman Bronze Horse pendant. 2nd Century AD

10



465 Weight 9,59 gr - Diameter 39 mm. Luristan Bronze, Extremely rare Pendant Very Good Condition.

10



466 Weight 28,12 gr - Diameter 37 mm. Ancient Greek Bronze Clay Dog Figurine...

10



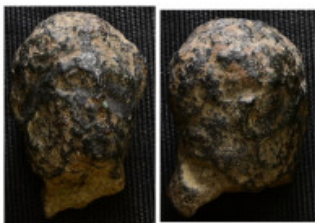
467 Weight 26,25 gr - Diameter 42 mm. Ancient Roman Imperial Legion Bronze Eagle statue 1-3 AD

10



468 Weight 11,25 gr - Diameter 28 mm. ANCIENT GREEK BRONZE EAGLE STATUE.

10



469 Weight 20,12 gr - Diameter 23 mm. ANCIENT GREEK BRONZE FIGURE..

10



470 Weight 16,31 gr - Diameter 35 mm. Ancient Roman Imperial Legion Silver Eagle statue 1-3 AD

10



471 Weight 37,20 gr - Diameter 50 mm. ANCIENT GREEK BRONZE FIGURE. Century ?

10



472 Weight 12,78 gr - Diameter 46 mm. ANCIENT BRONZE FIGURE. Century ?

10



473 Weight 27,15 gr - Diameter 51 mm. Ancient Roman bronze body part. 3rd-4th century. The arms are from different figurines. Artefacts such as figurines were often purposefully broken and deposited as votive offering to the Gods.

10



474 Weight 24,72 gr - Diameter 40 mm. ANCIENT Roman eagle statuette on pyramid. Bronze eagle figurine on a pyramidal base 3rd-4th century

10



475 Weight 7,56 gr - Diameter 25 mm. Ancient Bronze Figure.

10



476 Weight 59,91 gr - Diameter 46 mm. ANCIENT ROMAN BRONZE FIGURE 3rd-4th century.

10



477 Weight 40,00 gr - Diameter 42 mm. Ancient Roman bronze eagle 3rd-4th century.

10



478 Weight 41,00 gr - Diameter 41 mm. Ancient Roman, bronze eagle, 2nd century AD, with head turned to the left, wings folded, grasping an animal's head.

10



479 Weight 19,48 gr - Diameter 33 mm. Ancient Roman bronze eagle 3rd-4th century.

10



480 Weight 50,58 gr - Diameter 51 mm. ANCIENT FIGURINES. Greek bronze bull. Geometric period, 7-8th century BC

10



481 Weight 34,40 gr - Diameter 44 mm. Ancient bronze figure. Century ? Greek period ?

10



482 Weight 14,15 gr - Diameter 21 mm. Ancient Roman bronze application. 3rd-4th century

10



483 Weight 96,34 gr - Diameter 93 mm. Ancient bronze nuge figure.... Anatolia - mesopotamia ?

10



484 Weight 28,05 gr - Diameter 45 mm. ANCIENT ROMAN BRONZE GILT DUCK BROOCH. 3rd-4th century

10



485 Weight 28,92 gr - Diameter 39 mm. Ancient Bronze Animal Foot Figure. Period greek ?

10



486 Weight 41,33 gr - Diameter 40 mm. Ancient Bronze animal figure. Anatolia or mesoptamia !

10



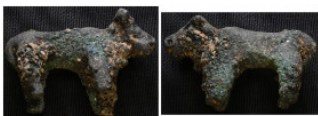
487 Weight 16,42 gr - Diameter 43 mm. Ancient Bronze Animal Figure.

10



488 Weight 18,36 gr - Diameter 30 mm. Ancient Bronze handle with a male head applique 1st - 3rd century AD

10



489 Weight 39,42 gr - Diameter 43 mm. Ancient Roman bull made of bronze 1-4 centuries

10



490 Weight 2,80 gr - Diameter 23 mm. Ancient Roman Imperial Period Bronze 1-3 century

10



491 Weight 8,35 gr - Diameter 28 mm. Ancient Roman Bronze Imperial Legion Eagle statue 1-4 century

10



492 Weight 2,78 gr - Diameter 23 mm. Ancient Silver figure. Century ?

10



493 Weight 77,28 gr - Diameter 82 mm. Ancient Roman period bronze figure.

10



494 Weight 4,15 gr - Diameter 31 mm. Ancient roman rooster figure 1-3 century

10



495 Weight 8,90 gr - Diameter 30 mm. Ancient Bronze handle with a male head applique 1st - 3rd century AD

10



496 Weight 9,78 gr - Diameter 32 mm. ROMAN SILVER STATUETTE OF LEGIONARY EAGLE 1-4 century

10



497 Weight 8,71 gr - Diameter 36 mm. Ancient Roman Legionary, c. 1st-3rd century AD. A rare bronze horse-shaped fibula.

10



498 Ancient 3 pieces of figures. Sold as seen. No return.

10



499 Weight 16,29 gr - Diameter 44 mm. Ancient Roman Bronze figure 1-3 century AD

10



500 Weight 47,86 gr - Diameter 43 mm. Ancient Roman Bronze Eagle With Wings Spread c.1st-4th

10



501 Weight 49,00 gr - Diameter 52 mm. Ancient Roman Bronze Statuette of a Horse 1st-4th century.

10



502 Weight 9,00 gr - Diameter 22 mm. Syria - Persia, Ancient Bronze Bull Head Amulet or figure c. 1500 - 650 B.C

10



503 Weight 35,15 gr - Diameter 39 mm. Ancient Roman lion head application 1-4 century

10



504 Weight 30,93 gr - Diameter 52 mm. Ancient Roman Bronze Figure. deer and eagle. Century 1-4

10



505 Weight 8,42 gr - Diameter 34 mm. Ancient Roman Bronze Statue century 1-4

10



506 Weight 2,19 gr - Diameter 21 mm. Ancient Roman silver Eagle figure.

10



507 Weight 15,94 gr - Diameter 43 mm. Ancient Roman bronze figure.

10



508 Weight 26,46 gr - Diameter 62 mm. Highly stylized figure of an ithyphallic man. The bar-shaped figure with a spherical head. The face with deeply engraved, triangular eyes, a prominent, pointy nose and a broad, slightly open mouth with thick lips. The figure wears a cap or a helmet with a high modius, which - in combination with the ithyphallic depiction - suggest being a symbol for fertility. century 7th century B.C.

10



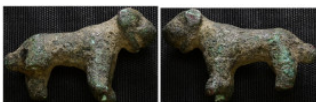
509 Weight 27,00 gr - Diameter 57 mm. Ancient Roman Bronze Figurine Statuette Roman Period.

10



510 Weight 46,27 gr - Diameter 61 mm. ANCIENT ROMAN BRONZE ZEUS STATUETTE.(1st-2nd century)

10



511 Weight 13,32 gr - Diameter 33 mm. ANCIENT Roman Bronze Dog. Roman Imperial, circa 1st-2nd Century A.D.

10



512 Weight 19,70 gr - Diameter 73 mm. Ancient bronze figure.. Greek ? Century ?

10



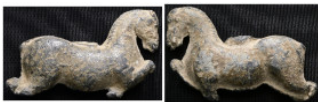
513 Weight 19,79 gr - Diameter 30 mm. Ancient Bronze Lion's head.

10



514 Weight 12,30 gr - Diameter 33 mm. Ancient Greek Period bronze bull's skull.

10



515 Weight 58,18 gr - Diameter 56 mm. Ancient small roman bronze horse figurine 1st century BC - 1st century AD

10



516 Weight 2,45 gr - Diameter 26 mm. Ancient Bronze Figure.

10



517 Weight 49,00 gr - Diameter 54 mm. Ancient Greece Bronze Figure, c. 4th-1st century BC

10



518 Weight 71,76 gr - Diameter 51 mm. Ancient Greek Bronze. Century ?

10



519 Weight 41,15 gr - Diameter 45 mm. ANCIENT ROMAN BRONZE EAGLE FIGURINE (1ST-5TH CENTURY AD)

10



520 Weight 9,36 gr - Diameter 20 mm. Ancient Roman Bronze Head of a Bull Pendant circa 1st Century B.C./2nd Century A.D.

10



521 Weight 19,09 gr - Diameter 50 mm. Ancient Bronze Figure.

10



522 Weight 16,00 gr - Diameter 55 mm. Ancient Bronze Figure.

10



523 Weight 78,32 gr - Diameter 130 mm. Ancient Bronze Figure.

10



524 Weight 2,95 gr - Diameter 14 mm. Ancient Roman Bronze bull head figure and pendant. Roman period.

10



525 Weight 30,50 gr - Diameter 48 mm. ANCIENT ROMAN BRONZE ZEUS STATUETTE.(1st-2nd century)

10



526 Weight 55,51 gr - Diameter 26 mm. Ancient Figure. Added description !

10



527 Weight 27,60 gr - Diameter 48 mm. Celtic Ithyphallic Bronze Idol

10



528 Weight 42,01 gr - Diameter 59 mm. Ancient Roman Period Bronze Figure. Century 1-3.

10



529 Weight 16,46 gr - Diameter 39 mm. Ancient A small roman bronze horse figurine 1st century BC - 1st century AD

10



530 Weight 73,10 gr - Diameter 74 mm. A Roman statuette of Hercules 1st/2nd century AD. Bronze with bright black patina

10



531 Weight 19,50 gr - Diameter 37 mm. Ancient Bronze Figure and pendant. Century roman period

10



532 Weight 62,00 gr - Diameter 165 mm. Antique BRONZE Looks like Far East Indian symbols. Bronze

10



533 Weight 51,49 gr - Diameter 120 mm. Ancient Bronze Figure.. Century Roman Period.

10



534 Weight 8,72 gr - Diameter 29 mm. Ancient Roman Bronze Figure eagle. Century 1-4

10



535 Weight 6,01 gr - Diameter 20 mm. Ancient Greek Bronze hand. Century near roman period.

10



536 Weight 10,61 gr - Diameter 24 mm. Ancient bronze figure. Period ?

10



537 Weight 20,88 gr - Diameter 56 mm. Ancient Roman Period Bronze Lion pendant.

10



538 Weight 37,67 gr - Diameter 43 mm. Ancient Roman Bronze animal Figure.

10



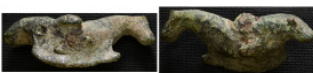
539 Weight 25,25 gr - Diameter 27 mm. Ancient Greek bronze figure.

10



540 Weight 38,93 gr - Diameter 38 mm. Ancient roman Bronze Figure.

10



541 Weight 27,78 gr - Diameter 43 mm. Ancient An appealing Celtic bronze votive horse figurine.

10



542 Weight 51,88 gr - Diameter 43 mm. Ancient Roman Bronze Legionary Eagle. Symbol of the Imperial Military Power.

10



543 Weight 54,00 gr - Diameter 51 mm. Asia Minor, Turkey Anatolian, ca. 7th century BCE. Wrought solid cast bronze miniature ido depicting four contiguous figures standing side by side with characteristically abstract heads and bodies. Ancient anatolia served as a geographical link between Europe and asia, and anatoliaans created some of the finest works from the bronze age with expert artistry and craftsmanship as we see in this example. RARE ANATOLIAN BRONZE AMULET - FAMILY OF FOUR

10



544 Weight 40,21 gr - Diameter 35 mm. Ancient Roman Bronze Figure.

10



545 Weight 27,08 gr - Diameter 36 mm. Ancient roman Period ? Bronze animal Figure.

10



546 Weight 35,42 gr - Diameter 36 mm. Ancient Roman Bronze Legionary Eagle. Symbol of the Imperial Military Power.

10



547 Weight 15,58 gr - Diameter 25 mm. Roman bronze head applique 1st - 2nd century AD

10



548 Weight 7,21 gr - Diameter 77 mm. Ancient Roman Bronze hand and eeg.

10



549 Weight 105,19 gr - Diameter 78 mm. Ancient Bronze Figure. Fibula ? Greek Period.

10



550 Weight 22,94 gr - Diameter 46 mm. Ancient Roman Bronze Legationary Eagle. Symbol of the Imperial Military Power.

10



551 Weight 51,99 gr - Diameter 46 mm. Roman Bronze Applique, c. 1st-2nd century AD

10



552 Weight 19,29 gr - Diameter 35 mm. Ancient Roman bronze body part. 3rd-4th century. The arms are from different figurines. Artefacts such as figurines were often purposefully broken and deposited as votive offering to the Gods.

10



553 Weight 26,49 gr - Diameter 59 mm. Ancient Roman Bronze Figure 1st-2nd century AD

10



554 Weight 19,85 gr - Diameter 35 mm. Ancient Roman Bronze Legionary Eagle. Symbol of the Imperial Military Power.

10



555 Weight 42,05 gr - Diameter 54 mm. Ancient Bronze Small Twin Figures

10



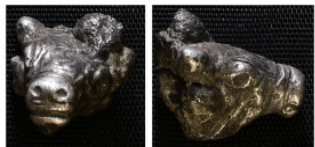
556 Weight 6,89 gr - Diameter 27 mm. Ancient Byzantine Bronze Figure lion.

10



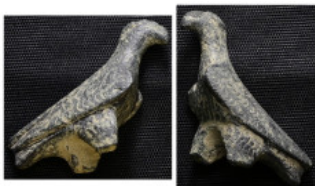
557 Weight 20,42 gr - Diameter 34 mm. Ancient Roman Bronze Eagle With Wings Spread c.1st-4th

10



558 Weight 9,34 gr - Diameter 18 mm. ANCIENT ROMAN SILVER BULL HEAD (1ST- 3RD CENTURY AD)

10



559 Weight 14,28 gr - Diameter 36 mm. Ancient Roman Bronze Legionary Eagle. Symbol of the Imperial Military Power.

10



560 Weight 17,89 gr - Diameter 33 mm. Ancient Roman Bronze horse figurine 1st century BC - 1st century AD

10



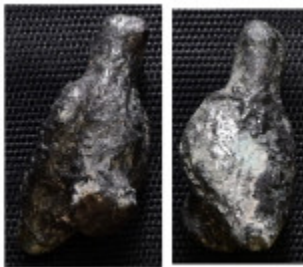
561 Weight 25,69 gr - Diameter 56 mm. ANCIENT GREEK BRONZE BULL FIBULA.

10



562 Weight 33,01 gr - Diameter 45 mm. Ancient Roman Bronze Figure 1ST-3RD century

10



563 Weight 3,50 gr - Diameter 20 mm. Ancient roman period bronze eagle.

10



564 Weight 11,54 gr - Diameter 26 mm. Ancient Roman Bronze Legionary Eagle. Symbol of the Imperial Military Power.

10



565 Weight 22,54 gr - Diameter 29 mm. Ancient Roman bronze boar head fitting, 1st-2nd century A.D.

10



566 Weight 2,87 gr - Diameter 30 mm. Ancient Roman Period It is made of silver and gold animal figure.

10



567 Weight 8,43 gr - Diameter 16 mm. Ancient Greek silver foot.

10



568 Weight 19,57 gr - Diameter 41 mm. Ancient Bronze Small Twin Figures

10



569 Weight 44,48 gr - Diameter 54 mm. Ancient bronze figure. Period ? Century ?

10



570 Weight 1,28 gr - Diameter 60 mm. Ancient Bronze roman period.

10



571 Weight 19,63 gr - Diameter 32 mm. Ancient Greek Bronze Figure.

10



572 Weight 6,29 gr - Diameter 26 mm. Ancient Roman Bronze Legionary Eagle. Symbol of the Imperial Military Power.

10



573 Weight 47,63 gr - Diameter 41 mm. Ancient Roman Bronze Exclusive Statuette of a Powerful lion

10



574 Weight 41,59 gr - Diameter 38 mm. Ancient Lead figure.

10



575 Weight 54,29 gr - Diameter 53 mm. Ancient Roman Bronze Legionary Eagle. Symbol of the Imperial Military Power.

10



576 Weight 23,44 gr - Diameter 48 mm. Ancient Roman Period Bronze Bull and Human figure.

10



577 Weight 37,66 gr - Diameter 41 mm. ANCIENT ROMAN BRONZE EAGLE FIGURINE (1ST-5TH CENTURY AD)

10



578 Weight 60,00 gr - Diameter 59 mm. Bronze bull's head STRAP SPREADER.

10



579 Weight 8,73 gr - Diameter 24 mm. Ancient Roman Silver Legionary Eagle. Symbol of the Imperial Military Power.

10



580 Weight 13,99 gr - Diameter 47 mm. Ancient Bronze Horse.

10



581 Weight 12,10 gr - Diameter 30 mm. Ancient Roman Bronze Zeus Figure.

10



582 Weight 3,78 gr - Diameter 18 mm. Ancient Roman Bronze Legionary Eagle. Symbol of the Imperial Military Power.

10



583 5 pieces of figures. Sold as seen. No return.

10



584 Weight 270 gr - Diameter 173 mm. Ancient Greek Bronze Hearing tube Hearing aid.

10



585 Weight 270 gr - Diameter 117 mm. Ancient Bronze bull's head STRAP SPREADER.

10



586 Early Byzantine Silver Spoon. Circa mid-6th-mid-7th century. Probably once part of a set, this handsome spoon exemplifies the exceptional quality of the finest Early Byzantine silver. The outer part of the spoon's bowl is decorated with embellishments. The tapering stem with traces of gilding displays in niello the name " ΔΠΡΟΣΟΚΝΙΦΙΛΗ " . Also on the disk is the monogram of the as-yet-identified owner. The use of Latin for the inscriptions associates the spoon with Roman imperial tradition, which was transferred to the new Rome, Constantinople, in the fourth century. Metropolitan Museum of Art- New York Gallery 301 (very similar). Weight 74,08 gr - Diameter 254 mm.

700



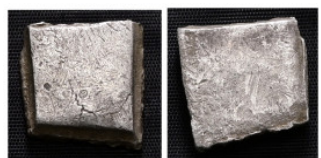
587 Greek wine strainer, 5th - 4th century BC. Elegantly shaped, bronze wine strainer with a detailed duck head handle and a curved bowl with a hemispherical strainer in the middle. Impressive pale blue patina. Ex Hirsch München Auktion 282, 2012, 1013. Weight 92,66 gr - Diameter 233 mm.

300



588 Weight 5,20 gr - Diameter 73 mm.

10



589 Silver fragment.. 12,99 gr - Diameter 25 mm.

10



590 ANCIENT ROMAN SILVER ZEUS FIGURINE.(1st- 3rd century).Ar. Weight 5,72 gr - Diameter 59 mm.

10



591 ANCIENT ROMAN SILVER ZEUS FIGURINE.(1st- 3rd century).Ar. Weight 2,50 gr - Diameter 49 mm.

10



592 Weight 70,44 gr - Diameter 53 mm.

10



593 Ancient Late Roman-Pre Byzantine, Probably 'Military Saints' Silver Amulet. Circa 4th-6th Century AD. Obv: Three Military Saints? wearing roman army uniforms, holding spears and shields, Monograms on left top. Rev: Large cross potent with embellishments. Very interesting Late roman issue. The military saints, warrior saints and soldier saints are patron saints, martyrs and other saints associated with the military. They were originally composed of the early Christians who were soldiers in the Roman army during the persecution of Christians, especially the Diocletianic Persecution of AD 303-313. Most of the early Christian military saints were soldiers of the Roman Empire who had become Christian and, after refusing to participate in Imperial cult rituals of loyalty to the Roman Emperor, were subjected to corporal punishment including torture and martyrdom. Weight 21,81 gr - Diameter 64 mm.

800



594 ANCIENT ROMAN SILVER ZEUS FIGURINE.(1st- 3rd century).Ar. Weight 4,58 gr - Diameter 42 mm.

10



595 Ancient Roman silver plaque pendant circa 1st-3rd century AD. Human figure on it. Weight 7,72 gr - Diameter 65 mm.

10



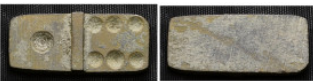
596 Ancient bronze cane holder head. Wolf figure right at the end. Weight 223 gr - Diameter 179 mm.

10



597 Bronze chess piece (Knight). Weight 16,80 gr - Diameter 37 mm.

10



598 Bronze domino.. Weight 10,95 gr - Diameter 33 mm.

10



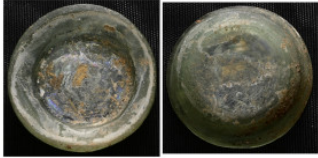
599 Ancient Roman Bell. Weight 46,71 gr - Diameter 52 mm.

10



600 ANCIENT BYZANTINE BRONZE GOAT BELL (CA. 11 - 13 AD). Byzantine writing on the top.. Weight 116,36 gr - Diameter 69 mm.

10



601 Ancient Roman glass circa 3-5th century AD. Weight 7,47 gr - Diameter 30 mm.

10



602 Ancient glass. Weight 8,79 gr - Diameter 19 mm.

10



603 Ancient Byzantine glass seal. Weight 1,97 gr - Diameter 17 mm.

10



604 2 pieces of glasses. Sold as seen. No return.

10



605 Ancient glass token circa 3th-6th century AD. Weight 2,19 gr - Diameter 21 mm.

10



606 Glass Ellipsoid Seal, c. 4th-6th century AD. Weight 14,23 gr - Diameter 24 mm.

10



607 Ancient marble plate with 4 gazelles on it. Weight 138,90 gr
- Diameter 103 mm.

100



608 Ancient marble seal. Weight 8,06 gr - Diameter 23 mm.

10



609 Ancient marble weight. Weight 16,37 gr - Diameter 16 mm.

10



610 Ancient marble swan figurine. Weight 5,70 gr - Diameter 24 mm.

10



611 Ancient marble seal. Weight 2,36 gr - Diameter 15 mm.

10



612 Ancient marble weight. Weight 13,11 gr - Diameter 18 mm.

10



613 Ancient marble seal. Weight 2,20 gr - Diameter 14 mm.

10



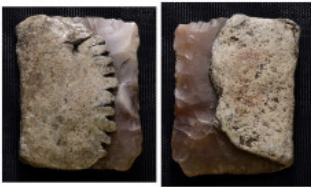
614 Weight 15,79 gr - Diameter 33 mm. Post Medieval Lead-Sheathed Musket Flint. 18th-19th century AD. A thin flint plate with one worked edge held in a lead sleeve.

5



615 Weight 22,00 gr - Diameter 33 mm. Post Medieval Lead-Sheathed Musket Flint. 18th-19th century AD. A thin flint plate with one worked edge held in a lead sleeve.

5



616 Weight 19,59 gr - Diameter 32 mm. Post Medieval Lead-Sheathed Musket Flint. 18th-19th century AD. A thin flint plate with one worked edge held in a lead sleeve.

5



617 Ancient Lead Melting Apparats. Uncertain Period. Weight 24,58 gr - Diameter 69 mm.

5



618 Ancient Lead Melting Apparats. Uncertain Period. Weight 18,98 gr - Diameter 70 mm.

5



619 Ancient Lead Melting Apparats. Uncertain Period. Weight 30,99 gr - Diameter 78 mm.

5



620 Ancient Lead Melting Apparats. Uncertain Period. Weight 48,92 gr - Diameter 100 mm.

5



621 Ancient Lead Melting Apparats. Uncertain Period. Weight 30,05 gr - Diameter 76 mm.

5



622 Ancient Lead Melting Apparats. Uncertain Period. Weight 27,14 gr - Diameter 78 mm.

5



623 Ancient Lead Melting Apparats. Uncertain Period. Weight 48,09 gr - Diameter 92 mm.

5



624 Ancient Lead Melting Apparats. Uncertain Period. Weight 55,13 gr - Diameter 112 mm.

5



625 Ancient Lead Melting Apparats. Uncertain Period. Weight 28,39 gr - Diameter 88 mm.

5



626 Ancient Roman Bronze oil lamp. Weight 357 gr - Diameter 133 mm.

50



627 Ancient Roman Bronze oil lamp. Weight 332 gr - Diameter 136 mm.

50



628 Ancient Roman Bronze oil lamp. Weight 234 gr - Diameter 94 mm.

50



629 Ancient Islamic plate. Weight 33,23 gr - Diameter 92 mm.

20



630 Ancient Seal. Weight 1,59 gr - Diameter 13 mm.

5



631 BYZANTINE LEAD SEAL.(Circa 7th-11th Century).Pb. Weight 1,99 gr - Diameter 22 mm.

5



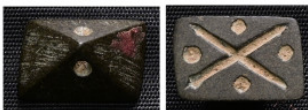
632 Ancient Seal. Weight 9,00 gr - Diameter 28 mm.

5



633 Ancient Seal. Weight 1,27 gr - Diameter 14 mm.

5



634 Ancient Seal. Weight 1,32 gr - Diameter 16 mm.

5



635 BYZANTINE LEAD SEAL.(Circa 7th-11th Century).Pb. 5 pieces, sold as seen. No return.

5



636 ISLAMIC LEAD SEAL.(Circa 7th-11th Century).Pb. Weight 5,43 gr - Diameter 22 mm.

5



637 BYZANTINE LEAD SEAL.(Circa 7th-11th Century).Pb.Weight 6,51 gr - Diameter 22 mm.

55



638 BYZANTINE LEAD SEAL.(Circa 7th-11th Century).Pb.Weight 12,15 gr - Diameter 25 mm.

5



639 Lead seal depicting a menorah. Roman, possibly Egyptian, 2nd-4th centuries AD. Face depicts a seven-branched menorah flanked by shofar and lulav. Weight 9,06 gr - Diameter 20 mm.

5



640 BYZANTINE LEAD SEAL.(Circa 7th-11th Century).Pb.Weight 6,49 gr - Diameter 18 mm.

5



641 BYZANTINE LEAD SEAL.(Circa 7th-11th Century).Pb.Weight 10,89 gr - Diameter 20 mm.

5



642 BYZANTINE LEAD SEAL.(Circa 7th-11th Century).Pb. Weight 8,68 gr - Diameter 16 mm.

5



643 BYZANTINE LEAD SEALS.(Circa 7th-11th Century).Pb.20 pieces, sold as seen. No return.

5



644 Ancient Bronze Seal. Weight 4,75 gr - Diameter 16 mm.

5



645 Ancient Bronze Seal. Weight 4,32 gr - Diameter 23 mm.

5



646 Ancient Bronze Seal. Weight 2,29 gr - Diameter 21 mm.

5



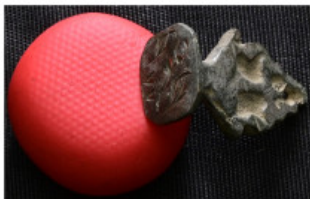
647 Ancient Bronze Seal. Weight 14,00 gr - Diameter 26 mm.

5



648 Ancient Bronze Seal. Weight 2,68 gr - Diameter 22 mm.

5



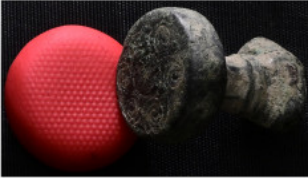
649 Ancient Bronze Seal. Weight 6,19 gr - Diameter 25 mm.

5



650 Ancient Bronze Seal. Weight 3,77 gr - Diameter 25 mm.

5



651 Ancient Bronze Seal. Weight 36,19 gr - Diameter 29 mm.

5



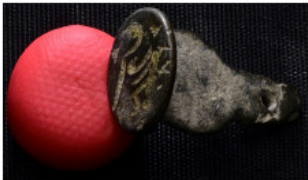
652 Ancient Bronze Seal. Weight 7,94 gr - Diameter 23 mm.

5



653 Ancient Bronze Seal. Weight 7,00 gr - Diameter 22 mm.

5



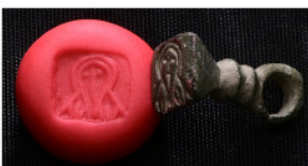
654 Ancient Bronze Seal. Weight 3,22 gr - Diameter 25 mm.

5



655 Ancient Bronze Seal. Weight 11,67 gr - Diameter 29 mm.

5



656 Ancient Bronze Seal. Weight 5,11 gr - Diameter 22 mm.

5



657 Ancient Bronze Seal. Weight 6,90 gr - Diameter 23 mm.

5



658 Ancient Bronze Seal. Weight 5,13 gr - Diameter 23 mm.

5



659 Ancient Bronze Seal. Weight 2,22 gr - Diameter 22 mm.

5



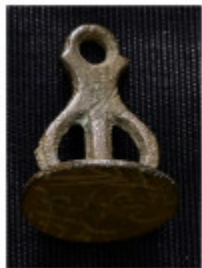
660 Ancient Bronze Seal. Weight 7,59 gr - Diameter 28 mm.

5



661 Ancient Bronze Seal. Weight 14,00 gr - Diameter 255 mm.

5



662 Ancient Bronze Seal. Weight 4,18 gr - Diameter 20 mm.

5



663 Ancient Bronze Seal. Weight 4,13 gr - Diameter 20 mm.

5



664 Ancient Bronze Seal. Weight 6,55 gr - Diameter 23 mm.

5



665 Ancient Bronze Seal. Weight 3,89 gr - Diameter 23 mm.

5



666 Ancient Bronze Seal. Weight 8,48 gr - Diameter 29 mm.

5



667 Ancient Bronze Seal. Weight 4,99 gr - Diameter 16 mm.

5



668 Ancient Bronze Seal. Weight 3,85 gr - Diameter 22 mm.

5



669 Ancient Bronze Seal. Weight 29,51 gr - Diameter 29 mm.

5



670 Ancient Bronze Seal. Weight 5,86 gr - Diameter 16 mm.

5



671 Ancient Bronze Seal. Weight 6,91 gr - Diameter 24 mm.

5



672 Ancient Bronze Seal. Weight 7,50 gr - Diameter 27 mm.

5



673 Ancient Bronze Seal. Weight 62,50 gr - Diameter 33 mm.

5



674 Ancient Bronze Seal. Weight 6,60 gr - Diameter 20 mm.

5



675 Ancient Bronze Seal. Weight 4,12 gr - Diameter 22 mm.

5



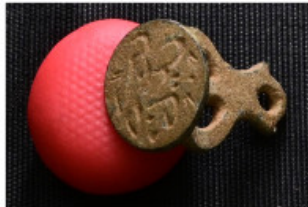
676 Ancient Bronze Seal. Weight 14,01 gr - Diameter 27 mm.

5



677 Ancient Bronze Seal. Weight 5,59 gr - Diameter 22 mm.

5



678 Ancient Bronze Seal. Weight 2,17 gr - Diameter 21 mm.

5



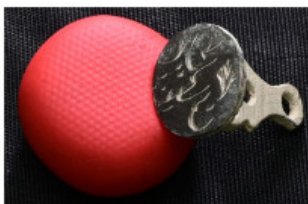
679 Ancient Bronze Seal. Weight 16,78 gr - Diameter 32 mm.

5



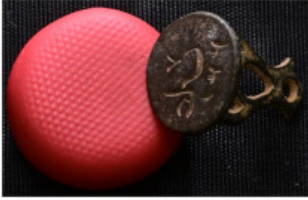
680 Ancient Bronze Seal. Weight 24,00 gr - Diameter 41 mm.

5



681 Ancient Bronze Seal. Weight 4,22 gr - Diameter 22 mm.

5



682 Ancient Bronze Seal. Weight 4,58 gr - Diameter 22 mm.

5



683 Ancient Bronze Seal. Weight 4,53 gr - Diameter 24 mm.

5



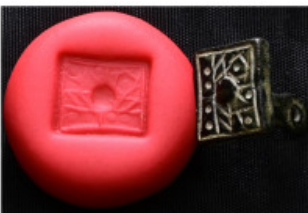
684 Ancient Bronze Seal. Weight 6,01 gr - Diameter 13 mm.

5



685 Ancient Bronze Seal. Weight 2,80 gr - Diameter 23 mm.

5



686 Ancient Bronze Seal. Weight 6,50 gr - Diameter 21 mm.

5



687 Ancient Bronze Seal. Weight 2,84 gr - Diameter 23 mm.

5



688 Ancient Bronze Seal. Weight 4,08 gr - Diameter 22 mm.

5



689 Ancient Bronze Seal. Weight 28,09 gr - Diameter 24 mm.

5



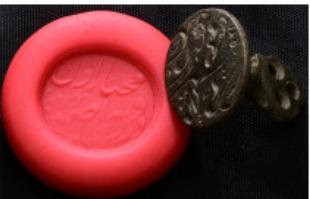
690 Ancient Bronze Seal. Weight 15,60 gr - Diameter 48 mm.

5



691 Ancient Bronze Seal. Weight 25,06 gr - Diameter 26 mm.

5



692 Ancient Bronze Seal. Weight 11,82 gr - Diameter 27 mm.

5



693 Ancient Bronze Seal. Weight 6,35 gr - Diameter 20 mm.

5



694 Ancient Bronze Seal. Weight 3,15 gr - Diameter 23 mm.

5



695 Ancient Bronze Seal. Weight 3,97 gr - Diameter 22 mm.

5



696 Ancient Bronze Seal. Weight 3,63 gr - Diameter 24 mm.

5



697 Ancient Bronze Seal. Weight 3,46 gr - Diameter 22 mm.

5



698 Ancient Bronze Seal. Weight 4,10 gr - Diameter 25 mm.

5



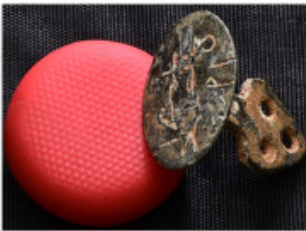
699 Ancient Bronze Seal. Weight 2,06 gr - Diameter 21 mm.

5



700 Ancient Bronze Seal. Weight 4,05 gr - Diameter 24 mm.

5



701 Ancient Bronze Seal. Weight 4,25 gr - Diameter 23 mm.

5



702 Ancient Bronze Seal. Weight 2,17 gr - Diameter 22 mm.

5



703 Ancient Bronze Seal. Weight 2,57 gr - Diameter 21 mm.

5



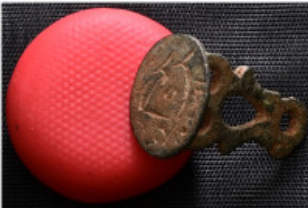
704 Ancient Bronze Seal. Weight 3,74 gr - Diameter 22 mm.

5



705 Ancient Bronze Seal. Weight 3,03 gr - Diameter 24 mm.

5



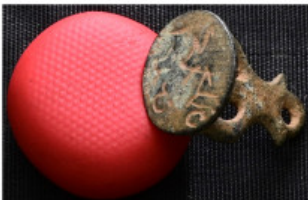
706 Ancient Bronze Seal. Weight 2,48 gr - Diameter 24 mm.

5



707 Ancient Bronze Seal. Weight 2,91 gr - Diameter 24 mm.

5



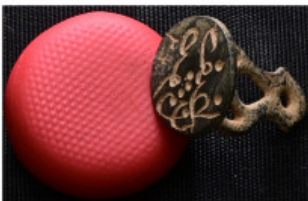
708 Ancient Bronze Seal. Weight 3,13 gr - Diameter 23 mm.

5



709 Ancient Bronze Seal. Weight 3,54 gr - Diameter 23 mm.

5



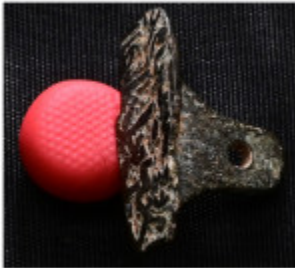
710 Ancient Bronze Seal. Weight 2,65 gr - Diameter 22 mm.

5



711 Ancient Bronze Seal. Weight 3,42 gr - Diameter 21 mm.

5



712 Ancient Bronze Seal. Weight 3,68 gr - Diameter 26 mm.

5



713 Ancient Bronze Seal. Weight 37,45 gr - Diameter 64 mm.

5



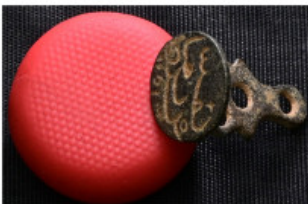
714 Ancient Bronze Seal. Weight 3,74 gr - Diameter 21 mm.

5



715 Ancient Bronze Seal. Weight 4,97 gr - Diameter 29 mm.

5



716 Ancient Bronze Seal. Weight 1,97 gr - Diameter 22 mm.

5



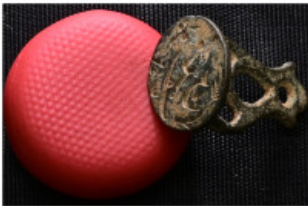
717 Ancient Bronze Seal. Weight 2,90 gr - Diameter 23 mm.

5



718 Ancient Bronze Seal. Weight 4,83 gr - Diameter 26 mm.

5



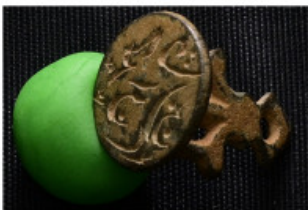
719 Ancient Bronze Seal. Weight 3,41 gr - Diameter 22 mm.

5



720 Ancient Bronze Seal. Weight 2,73 gr - Diameter 23 mm.

5



721 Ancient Bronze Seal. Weight 2,77 gr - Diameter 21 mm.

5



722 Ancient Bronze Seal. 6 pieces, sold as seen. No return.

5



723 Egyptian Blue Glazed Scarab; 18th Dynasty, ca. 1550-1307 BC. Weight 3,75 gr - Diameter 15 mm.

5



724 Egyptian Blue Glazed Scarab; 18th Dynasty, ca. 1550-1307 BC. Weight 3,39 gr - Diameter 16 mm.

5



725 Egyptian Blue Glazed Scarab; 18th Dynasty, ca. 1550-1307 BC. Weight 2,56 gr - Diameter 13 mm.

5



726 Egyptian Blue Glazed Scarab; 18th Dynasty, ca. 1550-1307 BC. Weight 3,23 gr - Diameter 14 mm.

5



727 Egyptian Blue Glazed Scarab; 18th Dynasty, ca. 1550-1307 BC. Weight 4,12 gr - Diameter 24 mm.

5



728 Egyptian Blue Glazed Scarab; 18th Dynasty, ca. 1550-1307 BC. Weight 3,00 gr - Diameter 14 mm.

5



729 Egyptian Blue Glazed Scarab; 18th Dynasty, ca. 1550-1307 BC. Weight 3,37 gr - Diameter 17 mm.

5



730 Indus Valley civilization Serpentine Stone tell asmar, 2500-2000 BC. Weight 45,50 gr - Diameter 49x20 mm.

100



731 Mesopotamia, Green Serpentine stone 2800-2600 BC. Weight 28,62 gr - Diameter 36x19 mm.

100



732 Weight 9,48 gr - Diameter 22 mm. ancient ruler seal

100



733 Western Asiatic Achaemenid Cylinder Seal with Hero 5th century BC. An amethyst cylinder seal with design of a royal hero in Persian costume extending his arms to two rampant gryphons Weight 11,01 gr - Diameter 29x13 mm.

100



734 Weight 2,21 gr - Diameter 15 mm.

100



735 Mesopotamia, Lamassu 1100-900 BC, Hamatit Stone. Weight 54,92 gr - Diameter 46x25 mm.

100



736 Weight 4,71 gr - Diameter 27 mm. ancient rulo seal

100



737 Mesapotamia Hamatit Stone 1400-1280 BC. Weight 12,23 gr - Diameter 32x14 mm.

100



738 Mesapotamia Green Serpentine stone, 2800-2600 BC. Weight 30,68 gr - Diameter 43x19 mm.

100



739 Mesapotamia, Black Serpentine stone old Babylon 1500-1200 BC. Weight 45,26 gr - Diameter 41x22 mm.

100



740 Weight 2,73 gr - Diameter 25 mm.

100



741 Mesapotamia Lapis Lazuli, 2100-1945 BC. Weight 34,50 gr - Diameter 45x17 mm.

100



742 Weight 4,43 gr - Diameter 22 mm. ancient rulo seal

100



743 Mesapotamia, Limonite stone 1550-1325 BC. Weight 11,99 gr - Diameter 31x12 mm.

100



744 Indus Valley civilization Serpentine Stone tell asmar, 2500-2000 BC. Weight 28,85 gr - Diameter 35x19 mm.

100



745 Mesapotamia, Lapis Lazuli 2334-2154 BC. Weight 27,49 gr - Diameter 35x17 mm.

100



746 Indus Valley civilization Serpentine Stone tell asmar, 2500-2000 BC. Weight 31,46 gr - Diameter 36x20 mm.

100



747 Mesapotamia, Lapis Lazuli 3400-3000 BC. Uruk Period. Weight 4,34 gr - Diameter 15x10 mm.

100



748 Mesapotamia, Bluish Chalcedony stone 2334-2154 BC. Weight 33,99 gr - Diameter 45x19 mm.

100



749 Mesapotamia, Chalcedony stone 2334-2154 BC. Weight 12,45 gr - Diameter 28x13 mm.

100



750 Indus Valley civilization Serpentine Stone tell asmar, 2500-2000 BC. Weight 36,23 gr - Diameter 48x18 mm.

100



751 Mesopotamia, Jasper stone 1200-1050 BC, Isin Larsa. Weight 39,65 gr - Diameter 39x21 mm.

100



752 Indus Valley civilization Serpentine Stone tell asmar, 2500-2000 BC. Weight 10,68 gr - Diameter 24x13 mm.

100



753 BYZANTINE BRONZE BREAD or BRICK STAMP with INSCRIPTION.(3rd-5th century AD) Ae. Weight 282 gr - Diameter 95 mm.

100



754 ROMAN BRONZE BREAD or BRICK STAMP with INSCRIPTION.(3rd-5th century AD) Ae. Weight 98,14 gr - Diameter 98 mm.

100



755 Ancient Greek Terracotta ca. 6th Century BC. Weight 84,65 gr - Diameter 84 mm.

10



756 Greek Terracotta Male Head; ca. 6th Century BC. Weight 14,05 gr - Diameter 37 mm.

10



757 Bronze fishing hook. Roman period, 1st-3rd century AD.
Weight 9,73 gr - Diameter 64 mm.

10



758 Bronze fishing hook. Roman period, 1st-3rd century AD.
Weight 5,73 gr - Diameter 56 mm.

10



759 ANCIENT ROMAN BRONZE ARROW HEADS.(Circa 2 th Century). Weight 16,50 gr - Diameter 51 mm.

10



760 ANCIENT ROMAN BRONZE ARROW HEADS.(Circa 2 th Century). Weight 13,55 gr - Diameter 50 mm.

10



761 ANCIENT ROMAN BRONZE ARROW HEADS.(Circa 2 th Century). Weight 5,65 gr - Diameter 46 mm.

10



762 ANCIENT ROMAN BRONZE ARROW HEADS.(Circa 2th Century). Weight 7,58 gr - Diameter 46 mm.

10



763 ANCIENT ROMAN BRONZE ARROW HEADS.(Circa 2th Century). Weight 19,62 gr - Diameter 120 mm.

10



764 ANCIENT ROMAN BRONZE ARROW HEADS.(Circa 2th Century). Weight 6,58 gr - Diameter 39 mm.

10



765 ANCIENT ROMAN BRONZE ARROW HEADS.(Circa 2th Century). Weight 6,54 gr - Diameter 41 mm.

10



766 ANCIENT ROMAN BRONZE ARROW HEADS.(Circa 2th Century). Weight 9,47 gr - Diameter 49 mm.

10



767 ANCIENT ROMAN BRONZE ARROW HEADS.(Circa 2th Century). Weight 12,69 gr - Diameter 43 mm.

10



768 ANCIENT ROMAN BRONZE ARROW HEADS.(Circa 2th Century). Weight 6,05 gr - Diameter 41 mm.

10



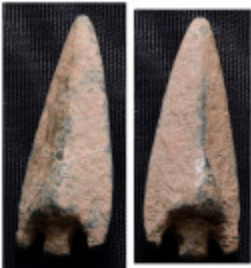
769 ANCIENT ROMAN BRONZE ARROW HEADS.(Circa 2th Century). Weight 29,64 gr - Diameter 102 mm.

10



770 ANCIENT ROMAN BRONZE ARROW HEADS.(Circa 2th Century). Weight 5,36 gr - Diameter 40 mm.

10



771 ANCIENT ROMAN BRONZE ARROW HEADS.(Circa 2th Century). Weight 10,68 gr - Diameter 32 mm.

10



772 ANCIENT ROMAN BRONZE ARROW HEADS.(Circa 2th Century). Weight 8,58 gr - Diameter 48 mm.

10



773 ANCIENT ROMAN BRONZE ARROW HEADS.(Circa 2th Century). Weight 16,01 gr - Diameter 98 mm.

10



774 ANCIENT ROMAN BRONZE ARROW HEADS.(Circa 2th Century). Weight 6,63 gr - Diameter 42 mm.

10



775 ANCIENT ROMAN BRONZE ARROW HEADS.(Circa 2th Century). Weight 13,29 gr - Diameter 74 mm.

10



776 ANCIENT ROMAN BRONZE ARROW HEADS.(Circa 2th Century). Weight 14,66 gr - Diameter 73 mm.

10



777 ANCIENT ROMAN BRONZE ARROW HEADS.(Circa 2th Century). Weight 5,36 gr - Diameter 42 mm.

10



778 ANCIENT ROMAN BRONZE ARROW HEADS.(Circa 2th Century). Weight 20,01 gr - Diameter 55 mm.

10



779 ANCIENT ROMAN BRONZE ARROW HEADS.(Circa 2th Century). Weight 11,81 gr - Diameter 57 mm.

10



780 ANCIENT ROMAN BRONZE ARROW HEADS.(Circa 2th Century). Weight 6,17 gr - Diameter 72 mm.

10



781 ANCIENT ROMAN BRONZE ARROW HEADS.(Circa 2th Century). Weight 12,88 gr - Diameter 53 mm.

10



782 ANCIENT ROMAN BRONZE ARROW HEADS.(Circa 2th Century). Weight 3,41 gr - Diameter 35 mm.

10



783 ANCIENT ROMAN BRONZE ARROW HEADS.(Circa 2 th Century). Weight 10,23 gr - Diameter 52 mm.

10



784 ANCIENT ROMAN BRONZE ARROW HEADS.(Circa 2 th Century). Weight 14,74 gr - Diameter 54 mm.

10



785 ANCIENT ROMAN BRONZE ARROW HEADS.(Circa 2 th Century). Weight 22,12 gr - Diameter 140 mm.

10



786 ANCIENT ROMAN BRONZE ARROW HEADS.(Circa 2 th Century). Weight 5,89 gr - Diameter 41 mm.

10



787 ANCIENT ROMAN BRONZE ARROW HEADS.(Circa 2 th Century). Weight 30,11 gr - Diameter 130 mm.

10



788 ANCIENT ROMAN BRONZE ARROW HEADS.(Circa 2 th Century). Weight 10,84 gr - Diameter 68 mm.

10



789 ANCIENT ROMAN BRONZE ARROW HEADS.(Circa 2 th Century). Weight 7,88 gr - Diameter 80 mm.

10



790 ANCIENT ROMAN BRONZE ARROW HEADS.(Circa 2 th Century). Weight 7,21 gr - Diameter 44 mm.

10



791 ANCIENT ROMAN BRONZE ARROW HEADS.(Circa 2 th Century). Weight 28,20 gr - Diameter 125 mm.

10



792 ANCIENT ROMAN BRONZE ARROW HEADS.(Circa 2 th Century). Weight 7,20 gr - Diameter 41 mm.

10



793 ANCIENT ROMAN BRONZE ARROW HEADS.(Circa 2 th Century). Weight 4,68 gr - Diameter 34 mm.

10



794 ANCIENT ROMAN BRONZE ARROW HEADS.(Circa 2th Century). Weight 4,28 gr - Diameter 40 mm.

10



795 ANCIENT ROMAN BRONZE ARROW HEADS.(Circa 2th Century). Weight 4,68 gr - Diameter 35 mm.

10



796 ANCIENT ROMAN BRONZE ARROW HEADS.(Circa 2th Century). Weight 5,23 gr - Diameter 38 mm.

10



797 ANCIENT ROMAN BRONZE ARROW HEADS.(Circa 2th Century). Weight 23,29 gr - Diameter 97 mm.

10



798 ANCIENT ROMAN BRONZE ARROW HEADS.(Circa 2th Century). Weight 7,86 gr - Diameter 42 mm.

10



799 ANCIENT ROMAN BRONZE ARROW HEADS.(Circa 2th Century). Weight 17,30 gr - Diameter 115 mm.

10



800 ANCIENT ROMAN BRONZE ARROW HEADS.(Circa 2th Century). Weight 15,65 gr - Diameter 116 mm.

10



801 ANCIENT ROMAN BRONZE ARROW HEADS.(Circa 2th Century). Weight 16,21 gr - Diameter 47 mm.

10



802 ANCIENT ROMAN BRONZE ARROW HEADS.(Circa 2th Century). Weight 14,79 gr - Diameter 84 mm.

10



803 ANCIENT ROMAN BRONZE ARROW HEADS.(Circa 2th Century). Weight 11,92 gr - Diameter 62 mm.

10



804 ANCIENT ROMAN BRONZE ARROW HEADS.(Circa 2th Century). Weight 4,57 gr - Diameter 40 mm.

10



805 ANCIENT ROMAN BRONZE ARROW HEADS.(Circa 2 th Century). Weight 6,91 gr - Diameter 40 mm.

10



806 ANCIENT ROMAN BRONZE ARROW HEADS.(Circa 2 th Century). Weight 5,86 gr - Diameter 37 mm.

10



807 ANCIENT ROMAN BRONZE ARROW HEADS.(Circa 2 th Century). Weight 6,13 gr - Diameter 55 mm.

10



808 ANCIENT ROMAN BRONZE ARROW HEADS.(Circa 2 th Century). Weight 5,76 gr - Diameter 40 mm.

10



809 ANCIENT ROMAN BRONZE ARROW HEADS.(Circa 2 th Century). Weight 5,79 gr - Diameter 40 mm.

10



810 ANCIENT ROMAN BRONZE ARROW HEADS.(Circa 2th Century). Weight 5,74 gr - Diameter 35 mm.

10



811 ANCIENT ROMAN BRONZE ARROW HEADS.(Circa 2th Century). Weight 5,20 gr - Diameter 42 mm.

10



812 ANCIENT ROMAN BRONZE ARROW HEADS.(Circa 2th Century). Weight 3,66 gr - Diameter 40 mm.

10



813 ANCIENT ROMAN BRONZE ARROW HEADS.(Circa 2th Century). Weight 11,01 gr - Diameter 55 mm.

10



814 ANCIENT ROMAN BRONZE ARROW HEADS.(Circa 2th Century). Weight 9,43 gr - Diameter 54 mm.

10



815 ANCIENT ROMAN BRONZE ARROW HEADS.(Circa 2 th Century). Weight 14,06 gr - Diameter 55 mm.

10



816 ANCIENT ROMAN BRONZE ARROW HEADS.(Circa 2 th Century). Weight 3,24 gr - Diameter 39 mm.

10



817 ANCIENT ROMAN BRONZE ARROW HEADS.(Circa 2 th Century). Weight 8,20 gr - Diameter 67 mm.

10



818 ANCIENT ROMAN BRONZE ARROW HEADS.(Circa 2 th Century). Weight 5,80 gr - Diameter 48 mm.

10



819 ANCIENT ROMAN BRONZE ARROW HEADS.(Circa 2 th Century). Weight 5,91 gr - Diameter 42 mm.

10



820 ANCIENT ROMAN BRONZE ARROW HEADS.(Circa 2th Century). Weight 11,22 gr - Diameter 80 mm.

10



821 ANCIENT ROMAN BRONZE ARROW HEADS.(Circa 2th Century). Weight 12,67 gr - Diameter 56 mm.

10



822 ANCIENT ROMAN BRONZE ARROW HEADS.(Circa 2th Century). Weight 7,58 gr - Diameter 44 mm.

10



823 ANCIENT ROMAN BRONZE ARROW HEADS.(Circa 2th Century). Weight 5,09 gr - Diameter 44 mm.

10



824 ANCIENT ROMAN BRONZE ARROW HEADS.(Circa 2th Century). Weight 15,80 gr - Diameter 76 mm.

10



825 ANCIENT ROMAN BRONZE ARROW HEADS.(Circa 2 th Century). Weight 3,68 gr - Diameter 42 mm.

10



826 ANCIENT ROMAN BRONZE ARROW HEADS.(Circa 2 th Century). Weight 18,63 gr - Diameter 132 mm.

10



827 ANCIENT ROMAN BRONZE ARROW HEADS.(Circa 2 th Century). Weight 19,70 gr - Diameter 125 mm.

10



828 ANCIENT ROMAN BRONZE ARROW HEADS.(Circa 2 th Century). Weight 21,18 gr - Diameter 67 mm.

10



829 ANCIENT ROMAN BRONZE ARROW HEADS.(Circa 2 th Century). Weight 6,00 gr - Diameter 40 mm.

10



830 ANCIENT ROMAN BRONZE ARROW HEADS.(Circa 2 th Century). Weight 6,13 gr - Diameter 49 mm.

10



831 ANCIENT ROMAN BRONZE ARROW HEADS.(Circa 2th Century). Weight 22,75 gr - Diameter 52 mm.

10



832 ANCIENT ROMAN BRONZE ARROW HEADS.(Circa 2th Century). Weight 8,14 gr - Diameter 40 mm.

10



833 ANCIENT ROMAN BRONZE ARROW HEADS.(Circa 2th Century). Weight 8,22 gr - Diameter 44 mm.

10



834 ANCIENT ROMAN BRONZE ARROW HEADS.(Circa 2th Century). Weight 6,70 gr - Diameter 44 mm.

10



835 ANCIENT ROMAN BRONZE ARROW HEADS.(Circa 2th Century). Weight 10,24 gr - Diameter 50 mm.

10



836 ANCIENT ROMAN BRONZE ARROW HEADS.(Circa 2 th Century). Weight 9,01 gr - Diameter 80 mm.

10



837 ANCIENT ROMAN BRONZE ARROW HEADS.(Circa 2 th Century). Weight 8,42 gr - Diameter 62 mm.

10



838 ANCIENT ROMAN BRONZE ARROW HEADS.(Circa 2 th Century). Weight 4,77 gr - Diameter 38 mm.

10



839 ANCIENT ROMAN BRONZE ARROW HEADS.(Circa 2 th Century). Weight 15,48 gr - Diameter 122 mm.

10



840 ANCIENT BRONZE ARROW HEADS. 8 pieces, sold as seen. No return.

10



841 ANCIENT BRONZE ARROW HEADS. 20 pieces, sold as seen. No return.

10



842 ANCIENT BRONZE ARROW HEADS. 20 pieces, sold as seen.
No return.

10



843 ANCIENT BRONZE ARROW HEADS. 41 pieces, sold as seen.
No return.

10



844 ANCIENT BRONZE ARROW HEADS. 16 pieces, sold as seen.
No return.

10



845 ANCIENT BRONZE ARROW HEADS. 20 pieces, sold as seen.
No return.

10



846 ANCIENT BRONZE ARROW HEADS. 20 pieces, sold as seen.
No return.

10



847 ANCIENT BRONZE ARROW HEADS. 10 pieces, sold as seen.
No return.

10



848 ANCIENT BRONZE ARROW HEADS. 20 pieces, sold as seen.
No return.

10



849 ANCIENT BRONZE ARROW HEADS. 27 pieces, sold as seen.
No return.

10



850 ANCIENT BRONZE ARROW HEADS. 20 pieces, sold as seen.
No return.

10



851 ANCIENT BRONZE ARROW HEADS. 20 pieces, sold as seen.
No return.

10



852 ANCIENT BRONZE ARROW HEADS. 15 pieces, sold as seen.
No return.

10



853 ANCIENT BRONZE ARROW HEADS. 20 pieces, sold as seen.
No return.

10



854 ANCIENT BRONZE ARROW HEADS. 6 pieces, sold as seen.
No return.

10



855 ANCIENT BRONZE ARROW HEADS. 8 pieces, sold as seen.
No return.

10



856 ANCIENT BRONZE ARROW HEADS. 20 pieces, sold as seen.
No return.

10



857 ANCIENT BRONZE ARROW HEADS. 40 pieces, sold as seen.
No return.

10



858 ANCIENT BRONZE ARROW HEADS. 20 pieces, sold as seen.
No return.

10



859 ANCIENT BRONZE ARROW HEADS. 10 pieces, sold as seen.
No return.

10



860 ANCIENT BRONZE ARROW HEADS. 20 pieces, sold as seen.
No return.

10



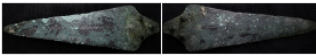
861 ANCIENT BRONZE ARROW HEADS. 30 pieces, sold as seen.
No return.

10



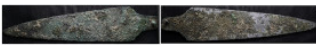
862 ANCIENT BRONZE ARROW HEADS. 21 pieces, sold as seen.
No return.

10



863 Antique Bronze Weapon Ancient Luristan 6th C. BC. Weight
33,83 gr - Diameter 127 mm.

10



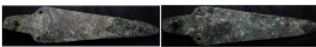
864 Antique Bronze Weapon Ancient Luristan 6th C. BC. Weight
23,55 gr - Diameter 141 mm.

10



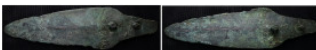
865 Antique Bronze Weapon Ancient Luristan 6th C. BC. Weight
44,18 gr - Diameter 182 mm.

10



866 Antique Bronze Weapon Ancient Luristan 6th C. BC. Weight
19,71 gr - Diameter 136 mm.

10



867 Antique Bronze Weapon Ancient Luristan 6th C. BC. Weight
31,35 gr - Diameter 115 mm.

10



868 Antique Bronze Weapon Ancient Luristan 6th C. BC. Weight
38,56 gr - Diameter 165 mm.

10



869 Antique Bronze Weapon Ancient Luristan 6th C. BC. Weight
90,17 gr - Diameter 220 mm.

10



870 Antique Bronze Weapon Ancient Luristan 6th C. BC. Weight 69,86 gr - Diameter 170 mm.

10



871 ANCIENT GREEK SLING BULLET.(4th-3rd centuries BC).Pb. Weight 37,17 gr - Diameter 32 mm.

10



872 ANCIENT GREEK SLING BULLET.(4th-3rd centuries BC).Pb. Weight 32,30 gr - Diameter 27 mm.

10



873 ANCIENT GREEK SLING BULLET.(4th-3rd centuries BC).Pb. Weight 48,79 gr - Diameter 43 mm.

10



874 ANCIENT GREEK SLING BULLET.(4th-3rd centuries BC).Pb. Weight 40,55 gr - Diameter 30 mm.

10



875 ANCIENT GREEK SLING BULLET.(4th-3rd centuries BC).Pb. Weight 30,00 gr - Diameter 28 mm.

10



876 ANCIENT GREEK SLING BULLET.(4th-3rd centuries BC).Pb.
Weight 39,62 gr - Diameter 32 mm.

10



877 ANCIENT GREEK SLING BULLET.(4th-3rd centuries BC).Pb.
Weight 44,49 gr - Diameter 35 mm.

10



878 ANCIENT GREEK SLING BULLET.(4th-3rd centuries BC).Pb.
Weight 52,18 gr - Diameter 36 mm.

10

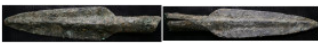


879 ANCIENT GREEK SLING BULLET.(4th-3rd centuries BC).Pb. 7
pieces, sold as seen. No return.

10

880 50 pieces of sling bullets. It is only open to bids from
countries within the European Union.. Sold as seen. No return.

10



881 Uncertain period, ancient spearhead. Weight 50,05 gr -
Diameter 124 mm.

10



882 Uncertain period, ancient spearhead. Weight 99,36 gr -
Diameter 203 mm.

10



883 Ancient axe. Century ?. Weight 412 gr - Diameter 131 mm.

30



884 Ancient axe. Century ?. Weight 181,26 gr - Diameter 145 mm.

30



885 Babylonian Duck-Billed Axehead 2nd millennium B.C. A bronze duck-billed axehead with a curved, beak-shaped blade, with two pierced eyes and a raised ridge down the centre. Weight 179,94 gr - Diameter 97 mm.

30



886 Ancient axe. Century ?. Weight 63,53 gr - Diameter 82 mm.

30



887 Ancient axe. Century ?. Weight 280 gr - Diameter 131 mm.

30



888 Ancient axe. Century ?. Weight 19,46 gr - Diameter 45 mm.

30



889 Ancient axe. Century ?. Weight 400 gr - Diameter 161 mm.

30



890 Ancient axe. Century ?. Weight 310 gr - Diameter 147 mm.

30



891 Ancient axe. Century ?. 2 pieces, sold as seen. No return.

30



892 Ancient axe. Century ?. 3 pieces, sold as seen. No return.

30



893 Ancient axe. Century ?. 3 pieces, sold as seen. No return.

30



894 Ancient axe. Century ?. 9 pieces, sold as seen. No return.

30



895 Ancient axe. Century ?. 3 pieces, sold as seen. No return.

30



896 Ancient axe. Century ?. 2 pieces, sold as seen. No return.

30



897 Roman Bronze Medical Implements 1st-4th Century AD.
Weight 5,01 gr - Diameter 63 mm.

10



898 Roman Bronze Medical Implements 1st-4th Century AD.
Weight 6,85 gr - Diameter 58 mm.

10



899 Roman Bronze Medical Implements 1st-4th Century AD.
Weight 2,89 gr - Diameter 85 mm.

10



900 Roman Bronze Medical Implements 1st-4th Century AD.
Weight 2,58 gr - Diameter 79 mm.

10



901 Roman Bronze Medical Implements 1st-4th Century AD.
Weight 0,91 gr - Diameter 45 mm.

10



902 Roman Bronze Medical Implements 1st-4th Century AD.
Weight 22,01 gr - Diameter 167 mm.

10



903 Roman Bronze Medical Implements 1st-4th Century AD.
Weight 6,07 gr - Diameter 131 mm.

10



904 Roman Bronze Medical Implements 1st-4th Century AD.
Weight 6,28 gr - Diameter 133 mm.

10



905 Roman Bronze Medical Implements 1st-4th Century AD.
Weight 10,05 gr - Diameter 72 mm.

10



906 Roman Bronze Medical Implements 1st-4th Century AD.
Weight 16,28 gr - Diameter 106 mm.

10



907 Roman Bronze Medical Implements 1st-4th Century AD.
Weight 9,71 gr - Diameter 25 mm.

10



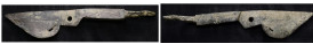
908 Roman Bronze Medical Implements 1st-4th Century AD.
Weight 9,00 gr - Diameter 40 mm.

10



909 Roman Bronze Medical Implements 1st-4th Century AD.
Weight 6,39 gr - Diameter 52 mm.

10



910 Roman Bronze Medical Implements 1st-4th Century AD.
Weight 9,81 gr - Diameter 86 mm.

10



911 Roman Bronze Medical Implements 1st-4th Century AD.
Weight 6,52 gr - Diameter 86 mm.

10



912 Roman Bronze Medical Implements 1st-4th Century AD.
Weight 7,67 gr - Diameter 66 mm.

10



913 Roman Bronze Medical Implements 1st-4th Century AD. 6 pieces, sold as seen. No return.

10



914 Roman Bronze Medical Implements 1st-4th Century AD. 2 pieces, sold as seen. No return.

10



915 Roman Bronze Medical Implements 1st-4th Century AD. 10 pieces, sold as seen. No return.

10



916 Roman Bronze Medical Implements 1st-4th Century AD. 10 pieces, sold as seen. No return.

10



917 Roman Bronze Medical Implements 1st-4th Century AD. 3 pieces, sold as seen. No return.

10



918 Roman Bronze Medical Implements 1st-4th Century AD. 6 pieces, sold as seen. No return.

10



919 Roman Bronze Medical Implements 1st-4th Century AD. 3 pieces, sold as seen. No return.

10



920 Roman Bronze Medical Implements 1st-4th Century AD. 6 pieces, sold as seen. No return.

10



921 Roman Bronze Medical Implements 1st-4th Century AD. 10 pieces, sold as seen. No return.

10



922 Roman Bronze Medical Implements 1st-4th Century AD. 20 pieces, sold as seen. No return.

10



923 Roman Bronze Medical Implements 1st-4th Century AD. 10 pieces, sold as seen. No return.

10



924 Roman Bronze Medical Implements 1st-4th Century AD. 5 pieces, sold as seen. No return.

10



925 GREEK - ROMAN. Lead weight. Mina. 2nd - 1st century BC, rectangular. Obv.: An anchor within the raised edge. Weight 505 gr - Diameter 94 mm.

10



926 Lead mina weight. Near Eastern, Hellenistic-Roman Periods, circa 2nd century BC-1st century AD. Weight 159,09 gr - Diameter 60 mm.

10



927 Lead mina weight. Near Eastern, Hellenistic-Roman Periods, circa 2nd century BC-1st century AD. Obv: Two crossed cornucopiae. Weight 314 gr - Diameter 85 mm.

10



928 Lead mina weight. Near Eastern, Hellenistic-Roman Periods, circa 2nd century BC-1st century AD. Weight 170,94 gr - Diameter 53 mm.

10



929 GREEK - ROMAN. Lead weight. Mina. 2nd - 1st century BC, rectangular. Obv.: An anchor within the raised edge. Weight 126,19 gr - Diameter 62 mm.

10



930 Lead mina weight. Near Eastern, Hellenistic-Roman Periods, circa 2nd century BC-1st century AD. Weight 20,59 gr - Diameter 21 mm.

10



931 Lead mina weight. Near Eastern, Hellenistic-Roman Periods, circa 2nd century BC-1st century AD. Obv: Cornucopia next to the letters EK. Weight 126,13 gr - Diameter 54 mm.

10



932 Ottoman Period, Antique Balance Scale Weight, At Least 100-200 Years Old, Dirham & Dram, Stamped, Ottoman Units of Measurement, 2 pieces, sold as seen. No return.

5



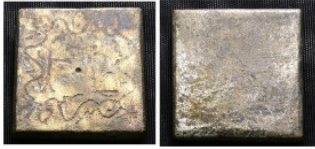
933 Ottoman Period, Antique Balance Scale Weight, At Least 100-200 Years Old, Dirham & Dram, Stamped, Ottoman Units of Measurement, 2 pieces, sold as seen. No return.

5



934 Ottoman Period, Antique Balance Scale Weight, At Least 100-200 Years Old, Dirham & Dram, Stamped, Ottoman Units of Mesasurement, 8 pieces, sold as seen. No return.

5



935 BYZANTINE BRONZE WEIGHT.(Circa 6th-9th century).
Weight 52,16 gr - Diameter 41 mm.

5



936 BYZANTINE BRONZE WEIGHT.(Circa 6th-9th century).
Weight 28,82 gr - Diameter 17 mm.

5



937 BYZANTINE BRONZE WEIGHT.(Circa 6th-9th century).
Weight 9,25 gr - Diameter 20 mm.

5



938 BYZANTINE BRONZE WEIGHT.(Circa 6th-9th century).
Weight 13,85 gr - Diameter 15 mm.

5



939 BYZANTINE BRONZE WEIGHT.(Circa 6th-9th century).
Weight 14,57 gr - Diameter 14 mm.

5



940 BYZANTINE BRONZE WEIGHT.(Circa 6th-9th century).
Weight 8,99 gr - Diameter 17 mm.

5



941 BYZANTINE BRONZE WEIGHT.(Circa 6th-9th century).
Weight 14,77 gr - Diameter 15 mm.

5



942 Byzantine two-nomismata weight. Eastern Mediterranean/Aegean (AD 7th-9th centuries) Octagonal in form; engraved on the top with a linear border enclosing the denominational mark N° B. Weight 51,32 gr - Diameter 35 mm.

5



943 BYZANTINE BRONZE WEIGHT.(Circa 6th-9th century).
Weight 3,89 gr - Diameter 18 mm.

5



944 BYZANTINE BRONZE WEIGHT.(Circa 6th-9th century).Weight 25,65 gr - Diameter 29 mm.

5



945 BYZANTINE BRONZE WEIGHT.(Circa 6th-9th century). Weight 30,83 gr - Diameter 20 mm.

5



946 BYZANTINE BRONZE WEIGHT.(Circa 6th-9th century). Weight 8,80 gr - Diameter 15 mm.

5



947 BYZANTINE BRONZE WEIGHT.(Circa 6th-9th century). Weight 29,44 gr - Diameter 19 mm.

5



948 BYZANTINE BRONZE WEIGHT.(Circa 6th-9th century). Weight 8,48 gr - Diameter 21 mm.

5



949 BYZANTINE BRONZE WEIGHT.(Circa 6th-9th century). Weight 14,70 gr - Diameter 15 mm.

5



950 BYZANTINE BRONZE WEIGHT.(Circa 6th-9th century).
Weight 21,00 gr - Diameter 34 mm.

5



951 BYZANTINE BRONZE WEIGHT.(Circa 6th-9th century).
Weight 2,53 gr - Diameter 13 mm.

5



952 BYZANTINE BRONZE WEIGHT.(Circa 6th-9th century).
Weight 13,79 gr - Diameter 23 mm.

5



953 BYZANTINE BRONZE WEIGHT.(Circa 6th-9th century).
Weight 14,30 gr - Diameter 14 mm.

5



954 BYZANTINE BRONZE WEIGHT.(Circa 6th-9th century).
Weight 31,51 gr - Diameter 21 mm.

5



955 BYZANTINE BRONZE WEIGHT.(Circa 6th-9th century).
Weight 4,14 gr - Diameter 12 mm.

5



956 BYZANTINE BRONZE WEIGHT.(Circa 6th-9th century).
Weight 30,89 gr - Diameter 32 mm.

5



957 BYZANTINE BRONZE WEIGHT.(Circa 6th-9th century).
Weight 14,70 gr - Diameter 15 mm.

5



958 BYZANTINE BRONZE WEIGHT.(Circa 6th-9th century).
Weight 56,15 gr - Diameter 24 mm.

5



959 BYZANTINE BRONZE WEIGHT.(Circa 6th-9th century).
Weight 8,19 gr - Diameter 15 mm.

5



960 BYZANTINE BRONZE WEIGHT.(Circa 6th-9th century).
Weight 25,01 gr - Diameter 25 mm.

5



961 BYZANTINE BRONZE WEIGHT.(Circa 6th-9th century).
Weight 13,61 gr - Diameter 20 mm.

5



962 BYZANTINE BRONZE WEIGHT.(Circa 6th-9th century).
Weight 50,94 gr - Diameter 33 mm.

5



963 BYZANTINE BRONZE WEIGHT.(Circa 6th-9th century).
Weight 29,29 gr - Diameter 18 mm.

5



964 BYZANTINE BRONZE WEIGHT.(Circa 6th-9th century).
Weight 13,39 gr - Diameter 15 mm.

5



965 BYZANTINE BRONZE WEIGHT.(Circa 6th-9th century).
Weight 14,82 gr - Diameter 17 mm.

5



966 BYZANTINE BRONZE WEIGHT.(Circa 6th-9th century).
Weight 29,18 gr - Diameter 19 mm.

5



967 BYZANTINE BRONZE WEIGHT.(Circa 6th-9th century).
Weight 2,19 gr - Diameter 13 mm.

5



968 BYZANTINE BRONZE WEIGHT.(Circa 6th-9th century).
Weight 11,22 gr - Diameter 24 mm.

5



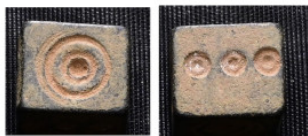
969 BYZANTINE BRONZE WEIGHT.(Circa 6th-9th century).
Weight 16,40 gr - Diameter 14 mm.

5



970 BYZANTINE BRONZE WEIGHT.(Circa 6th-9th century).
Weight 12,61 gr - Diameter 13 mm.

5



971 BYZANTINE BRONZE WEIGHT.(Circa 6th-9th century).
Weight 14,73 gr - Diameter 19 mm.

5



972 BYZANTINE BRONZE WEIGHTS.(Circa 6th-9th century).
Weight 26,65 gr - Diameter 17 mm.

5



973 BYZANTINE BRONZE WEIGHTS.(Circa 6th-9th century). 20 pieces, sold as seen. No return.

5



974 BYZANTINE BRONZE WEIGHT.(Circa 6th-9th century). Weight 4,30 gr - Diameter 17 mm.

5



975 BYZANTINE BRONZE WEIGHTS.(Circa 6th-9th century). 25 pieces, sold as seen. No return.

5



976 BYZANTINE BRONZE WEIGHTS.(Circa 6th-9th century). 4 pieces, sold as seen. No return.

5



977 BYZANTINE BRONZE WEIGHTS.(Circa 6th-9th century). 6 pieces, sold as seen. No return.

5



978 BYZANTINE BRONZE WEIGHTS.(Circa 6th-9th century). 20 pieces, sold as seen. No return.

5



979 BYZANTINE BRONZE WEIGHTS.(Circa 6th-9th century). 20 pieces, sold as seen. No return.

5



980 BYZANTINE BRONZE WEIGHTS.(Circa 6th-9th century). 20 pieces, sold as seen. No return.

5



981 BYZANTINE BRONZE WEIGHTS.(Circa 6th-9th century). 17 pieces, sold as seen. No return.

5



982 BYZANTINE BRONZE WEIGHTS.(Circa 6th-9th century). 10 pieces, sold as seen. No return.

5



983 BYZANTINE BRONZE WEIGHT.(Circa 6th-9th century).
Weight 28,14 gr - Diameter 22 mm.

5



984 BYZANTINE BRONZE WEIGHT.(Circa 6th-9th century).
Weight 26,14 gr - Diameter 17 mm.

5



985 BYZANTINE BRONZE WEIGHT.(Circa 6th-9th century).
Weight 14,06 gr - Diameter 14 mm.

5



986 BYZANTINE BRONZE WEIGHT.(Circa 6th-9th century).
Weight 14,57 gr - Diameter 15 mm.

5



987 BYZANTINE BRONZE WEIGHT.(Circa 6th-9th century).
Weight 143,00 gr - Diameter 35 mm.

5



988 23 pieces of mixed antiques. Sold as seen. No return.

10



989 7 pieces of mixed antiques. Sold as seen. No return.

10



990 9 pieces of mixed antiques. Sold as seen. No return.

10



991 20 pieces of mixed antiques. Sold as seen. No return.

10



992 30 pieces of mixed antiques. Sold as seen. No return.

10



993 8 pieces of mixed antiques. Sold as seen. No return.

10



994 25 pieces of mixed antiques. Sold as seen. No return.

10



995 20 pieces of mixed antiques. Sold as seen. No return.

10



996 20 pieces of mixed antiques. Sold as seen. No return.

10



997 7 pieces of mixed antiques. Sold as seen. No return.

10



998 25 pieces of mixed antiques. Sold as seen. No return.

10



999 17 pieces of mixed antiques. Sold as seen. No return.

10



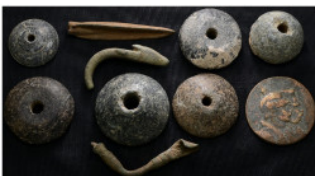
1000 20 pieces of mixed antiques. Sold as seen. No return.

10



1001 9 pieces of mixed antiques. Sold as seen. No return.

10



1002 10 pieces of mixed antiques. Sold as seen. No return.

10



1003 29 pieces of mixed antiques. Sold as seen. No return.

10



1004 15 pieces of mixed antiques. Sold as seen. No return.

10



1005 10 pieces of mixed antiques. Sold as seen. No return.

10



1006 26 pieces of mixed antiques. Sold as seen. No return.

10



1007 24 pieces of mixed antiques. Sold as seen. No return.

10



1008 20 pieces of mixed antiques. Sold as seen. No return.

10



1009 15 pieces of mixed antiques. Sold as seen. No return.

10



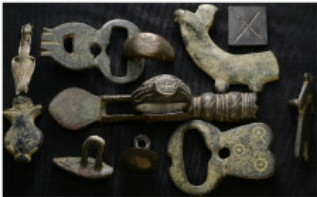
1010 11 pieces of mixed antiques. Sold as seen. No return.

10



1011 12 pieces of mixed antiques. Sold as seen. No return.

10



1012 12 pieces of mixed antiques. Sold as seen. No return.

10



1013 30 pieces of mixed antiques. Sold as seen. No return.

10



1014 20 pieces of mixed antiques. Sold as seen. No return.

10



1015 12 pieces of mixed antiques. Sold as seen. No return.

10



1016 65 pieces of mixed antiques. Sold as seen. No return.

10



1017 15 pieces of mixed antiques. Sold as seen. No return.

10



1018 28 pieces of mixed antiques. Sold as seen. No return.

10



1019 2 pieces of mixed antiques. Sold as seen. No return.

10



1020 14 pieces of mixed antiques. Sold as seen. No return.

10



1021 3 pieces of mixed antiques. Sold as seen. No return.

10



1022 14 pieces of mixed antiques. Sold as seen. No return.

10



1023 15 pieces of mixed antiques. Sold as seen. No return.

10



1024 11 pieces of mixed antiques. Sold as seen. No return.

10



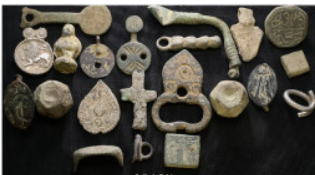
1025 2 pieces of mixed antiques. Sold as seen. No return.

10



1026 15 pieces of mixed antiques. Sold as seen. No return.

10



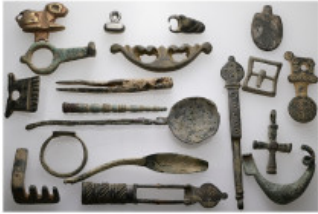
1027 20 pieces of mixed antiques. Sold as seen. No return.

10



1028 5 pieces of mixed antiques. Sold as seen. No return.

10



1029 19 pieces of mixed antiques. Sold as seen. No return.

10



1030 22 pieces of mixed antiques. Sold as seen. No return.

10



1031 57 pieces of mixed antiques. Sold as seen. No return.

10



1032 34 pieces of mixed antiques. Sold as seen. No return.

10



1033 14 pieces of mixed antiques. Sold as seen. No return.

10



1034 4 pieces of mixed antiques. Sold as seen. No return.

10