



# Numisart

## **Auction 8**

16 March 2025

All prices are starting prices (EUR)  
PDF catalog created by [www.biddr.com](http://www.biddr.com)



**1** A ROMAN BRONZE THEATRE MASK APPLIQUE Circa 1st-2nd century AD. Well modelled applique in the form of a male tragic theatrical mask. The expressive face with furrowed brow, deep set eyes, open mouth and curly beard is framed by cork-screw curls. The back is hollow and filled with lead for attachment. H 42 mm Ex European private collection, acquired on the German art market in the late 1990s.

**240**



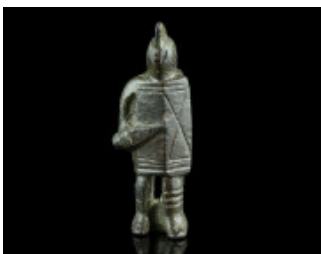
**2** A ROMAN BRONZE STATUETTE OF MARS Circa 2nd-3rd century AD. Mars, the god of war and agriculture, is shown standing in full armour, with high-crested Corinthian helmet, muscle cuirass over short-sleeved knee-length tunic, and greaves. A cloak is hanging from his left shoulder and wrapped around his left arm, in his left hand he holds an upright parazonium, a short sword in its scabbard. His right arm reaches upward, with two fingers of the right hand touching the helmet. Remains of a rod (?) for attachment at the back; both feet missing. H 9.8 cm Private European collection. Before, A. B. collection, UK, 1970s-early 2000s.

**700**



**3** A EUROPEAN LATE BRONZE AGE DOUBLE SPIRAL PENDANT Circa 1200-800 BC. Composed of two coils of bronze rod connected by a suspension loop. With a magnificent dark green patina. L 65 mm, H 40 mm Acquired on the UK art market. Ex old European private collection.

**120**



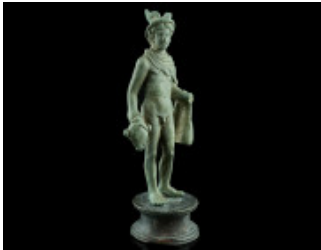
**4** A ROMAN BRONZE GLADIATOR BROOCH Circa 2nd-3rd century AD. The brooch features a secutor standing front with his typical smooth-crested helmet and large, rectangular shield. He is wearing a greave on his left leg and holds a short sword in his right hand. The shield is decorated with horizontal grooves and an X on the proper left side. With hinged pin and transverse catch plate. H 46 mm Ex European private collection, acquired on the German art market in the late 1990s.

**480**



**5** A FINE ROMAN SILVER AND GOLD FIGURAL ORNAMENT Circa 3rd century AD. A finely worked small ornament in the form of two rampant panthers flanking a krater. Silver core covered with thick gold sheet. Probably the projection of a ring. Face of left panther and rim of the krater slightly damaged. For an identical example in gold (complete with ring) see Christie's New York, Antiquities Sale 26 Jan 2023, Lot 166. H 14 mm; Silver and Gold! 2.45 g Ex Austrian private collection, acquired in the 1980s-90s.

**120**



**6** A WELL MODELLED ROMAN BRONZE STATUETTE OF MERCURY Circa 2nd-3rd century AD. The messenger god is standing in contrapposto, with the weight on his right foot. He is shown nude but for his winged cap (petasos) and a cloak pinned at his right shoulder and wrapped around his left arm. In his right hand he holds a money bag (marsupium), the now missing left hand probably held the herald's staff (caduceus). Mounted on an ancient but not belonging base. An excellent representation of this popular god of shopkeepers and merchants, travellers and transporters of goods, and thieves and tricksters. H 13 cm Ex European private collection, acquired on the German art market before 2000.

**1'400**



**7** A ROMAN BRONZE OIL LAMP WITH THEATRE MASK FINAL Circa 1st-2nd century AD. Fine bronze lamp with pear-shaped body and central filling hole, the flaring nozzle with rounded tip. Set on a ring base. To the back of the body, an arched handle is attached that terminates in a tragic theatrical mask facing towards the nozzle. The face is surrounded by locks and curls, below the chin a palmette. Handle reattached but probably belonging; some corrosion at back of body. L 14 cm, H 10.4 cm Ex European private collection, acquired on the German art market before 2000.

**500**



**8** AN ORNATE GREEK GOLD RING WITH HERAKLES KNOT Circa 4th-3rd century BC. The flat gold hoop rises to a Herakles knot bezel fashioned from two interlocking gold loops. The hoop and the loops are edged with plain gold wire and decorated with filigree and granulation work. The centre of the bezel is adorned with a lily-shaped ornament. In ancient times, the Herakles knot was thought to have magical or protective qualities. It was popular as a protective amulet, most notably as a wedding symbol. Ring size 66 (EU), outer diameter 24 mm (max.); Gold! 4.95 g Ex European private collection, acquired on the German art market between 2004-2010.

**1'400**



**9** A ROMAN BRONZE BUST OF A BOXER Circa 3rd century AD. Bust with the characteristic features of a professional boxer, notably the very short hair with the small pigtail at the back of the head, the pronounced boxer's nose, and the cauliflower ears. The face with stubble beard and thick brows has a fierce expression. On top of the head, a phallus is depicted to ward off the evil eye or spirit. Hollow cast; a tiny hole on the top and pierced for attachment at the back of the neck. Attractive green patina. H 49 mm Private European collection. Before, A. B. collection, UK, 1970s-early 2000s.

**800**



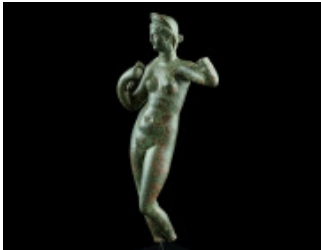
**10** A PAIR OF EUROPEAN LATE BRONZE AGE BRACELETS Circa 1000-800 BC. A matching pair of bronze bracelets, the rod rectangular in section. A few remains of incised decoration. Both with a magnificent blue-green patina. Diameter 65 mm each (max.) Acquired on the UK art market. Ex old European private collection.

**150**



**11** A ROMANESQUE BRONZE FIGURE OF ST JOHN MOURNING Circa 12th century AD. St John the Evangelist is shown in a long robe, touching his face with the left hand in a gesture of mourning. In the right hand probably a book or scroll (?). His face features staring almond-shaped eyes with protruding eyeballs, typical for this period. A pierced thorn surmounts the head; body below waist not preserved. H 58 mm Private European collection. Before, A. B. collection, UK, 1970s-early 2000s.

**350**



**12** A FINE ROMAN BRONZE STATUETTE OF VENUS Circa 1st-2nd century AD. Venus, the goddess of love and beauty, is shown nude but for a staphane atop her head. She stands in a relaxed stance, with her weight on her right leg and her left leg gently bent at the knee. She reaches upward with her left hand to adjust a strand of hair, in her right hand she held a mirror, admiring herself. With silver inlaid eyes! Left hand, mirror and both feet not preserved; a toned, deep scratch on the left leg. H 13.6 cm Ex European private collection, acquired on the German art market before 2000.

**2'500**



**13** A FINE EARLY BYZANTINE DECORATED GOLD CROSS Circa 5th-7th century AD. Highly elaborate gold cross with filigree decoration and a central projecting medallion set with a green glass stone. The hollow cross is composed of gold sheet soldered together. The obverse is decorated with spirals and peltae formed of beaded gold wire, the reverse features a chased cross-shaped geometric design. The inside of the suspension loop is filled with glass to strengthen the construction. Compared to the Late Roman period, Early Byzantine gold objects are very rare, and the present example is extraordinary for its size and quality. H 57 mm; Gold! 21.18 g Ex old European private collection.

**4'000**



**14** A EUROPEAN MIGRATION PERIOD BRONZE EAGLE BROOCH Circa 5th-6th century AD. Plate brooch in the form of an eagle in profile with folded wings. With notched edges and chip carved ornament. Red glass eye either reattached or replaced. Spring and pin missing. Surface probably treated with a thin layer of protective acrylic resin (Paraloid). H 38 mm Private European collection. Before, A. B. collection, UK, 1970s-early 2000s.

**150**



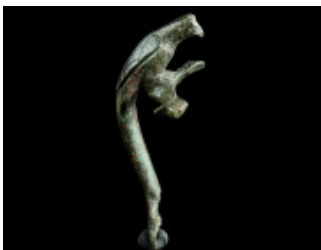
**15** A ROMAN GOLD RING WITH A NICOLO INTAGLIO DEPICTING A SHRIMP Circa late 2nd-3rd century AD. Ring with flared and angled shoulders, the oval bezel set with a nicolo intaglio depicting a shrimp to left. Ring size 49 (EU), outer diameter 23 mm (max.); Gold! 9.06 g Ex European private collection, acquired on the German art market before 2000.

**950**



**16** A ROMAN BRONZE LION BROOCH Circa late 1st-2nd century AD. Rare brooch with trapezoid foot and a bow composed of two elaborately worked lion protomes back-to-back. Their feet are resting on crossbars, between them a bull's head each. With hinged pin, small part of foot missing. L 37 mm Ex European private collection, acquired on the German art market in the late 1990s.

**200**



**17** A ROMAN BRONZE JUG HANDLE IN THE SHAPE OF A PARROT Circa 1st-2nd century AD. Finely worked handle of a jug in the form of a perching parrot with long tail feathers. The two curved terminals that would 'embrace' the mouth of the jug are shaped in the form of swan heads, with their beaks now missing. Feathers and further details are incised. Small part of the lower end of the handle not preserved. Some corrosion and pitting to surface. H 11.6 cm Ex Austrian private collection, acquired in the 1980s-90s.

**150**



**18** A ROMAN BRONZE BUST OF AN ATHLETE Circa 2nd-3rd century AD. Steelyard weight in the form of the bust of an athlete wearing a cap. He features short hair parted in the middle, a furrowed brow, deep set eyes and a hooked nose. Attractive green patina. Filled with lead. At the top, remains of iron where the suspension loop was attached; open at the bottom. Minor damage to lower edge and two cracks. H 43 mm Ex Gorny & Mosch, Munich, Auction 202 (2011), Lot 292. Ex Timeline Auction, London, 18.03.2011. Found near Iklingham, Suffolk, England, 1978.

**800**



**19** A ROMANO-CELTIC SILVER RING WITH TWO SPIRALS Circa 1st century AD. With two spirals and overlapping ends secured with spiral twists. Ring size 56 (EU), outer diameter 24 mm (max.) Ex Austrian private collection, acquired in the 1980s-90s.

**60**



**20** A SMALL ROMAN LEAD PLAQUE WITH A RARE FIGURATIVE DESIGN Circa 1st-3rd century AD. The top register shows the woodland god Pan having sex with a she-goat, a subject well known from the notoriously famous marble sculpture found in the Villa dei Papyri in Herculaneum in 1752. The bottom register features a nude hero fighting an attacking lion with a spear. On the reverse, an X and a ring. Minor part of top right corner and lower edge missing. H 33 mm Ex European private collection, acquired on the German art market before 2000.

**100**



**21** A EUROPEAN MIGRATION PERIOD SOLID GOLD BUCKLE Circa 5th century AD. Heavy gold buckle with long, curved thorn and lozenge-shaped plate with three rivets. L 30 mm; Gold! 10.4 g Ex Austrian private collection, acquired in the 1980s-90s.

**900**



**22** A EUROPEAN LATE BRONZE AGE TWISTED TORQUE Circa 1000-800 BC. Twisted hoop of solid bronze, the plain tapering ends with flattened coiled terminals. Beautiful dark patina! Diameter 21.3 cm Acquired on the UK art market. Ex old European private collection.

**220**



**23** A ROMAN BRONZE CASSEROLE WITH MAKER'S MARK Circa 1st century AD. Saucepan with silvered interior; remains of silvering on the outside. With a maker's mark stamped on the handle that reads P(VBLIVS) CIPI(VS) POL[YBI](VS), a well-known manufacturer from Capua in Italy. The Campanian bronze workshops were renowned for their superior quality, already acknowledged by Pliny the Elder, Natural History, 34.20. Cleaned, with some corrosion; a tiny hole in the bottom and a small crack. Handle reattached. L 21.4 cm, H 3.9 cm Ex European private collection, acquired on the German art market before 2000.

**600**



**24** A PAIR OF FINE GREEK GOLD BOAT EARRINGS Circa 5th century BC. Boat-shaped earrings with hollow body, tapering towards the ends. Decorated with applied wirework spirals and twisted gold wire. With high arched, U-shaped hooks. H 22 mm each; Gold! 3.37 g Ex European private collection, acquired on the German art market before 2000.

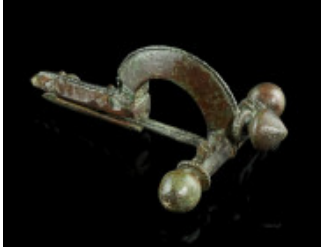
**350**



**25** A ROMAN SILVER EARLY CROSSBOW BROOCH Circa 3rd century AD. So-called 'Scharnierarmfibel', a precursor of the classical crossbow brooch. With arched bow, tubular foot, and a head knob. Long tubular crossbar with knobbed terminals. Hinged, pin restored. L 57 mm Ex European private collection, acquired on the German art market in the late 1990s.

**120**





**26** A LATE ROMAN BRONZE CROSSBOW BROOCH Circa 4th century AD. With arched bow and onion-shaped terminals ('Zwiebelknöpfe'). The top of the bow, the foot, and the knobs are decorated with separately attached beaded wire, the foot and the crossbar feature a carved design. Hinged, pin probably reattached. L 66 mm Ex European private collection, acquired on the German art market in the late 1990s.

**80**



**27** AN OVER LIFE-SIZED ROMAN MARBLE PORTRAIT HEAD Circa 1st century AD. Fragmentary marble head of a young, bearded man. Preserved is part of the front of the head and the proper left side. The chin, the right side and the back of the head are missing. The portrait features almond-shaped eyes, a short curly beard, and a fringe of short locks framing the forehead and temple. Further layers of larger locks are still visible above. Most probably from a honorific statue. The size of the fragment suggests that a person of high social standing is depicted, or possibly an imperial prince. The white veined marble has a few cracks along the layers. The surface is worn and eroded. H 25 cm ACTUAL SHIPPING COSTS WILL APPLY! (No flat rate shipping) Austrian private collection. Acquired from Antikenhandlung Helmut Liebert, Krefeld, Germany, in 2005. Object sold with a copy of the original invoice.

**1'800**



**28** A ROMAN BRONZE STATUETTE OF ZEUS/JUPITER Circa 2nd-3rd century AD. Zeus/Jupiter, the supreme god of the Roman pantheon, is shown nude, with long beard and curly hair. He is standing with his left arm outstretched, an eagle resting on his hand; in his right hand he probably held a thunderbolt. Both feet and right lower arm missing. H 71 mm Ex European private collection, acquired on the German art market in the late 1990s.

**80**



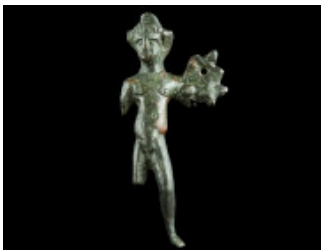
**29** A ROMAN BRONZE FIGURE OF SILENUS RECLINING ON A WINE-SKIN Circa 2nd-3rd century AD. Silenus, a rustic god of wine-making and drunkenness, is shown reclining, nude but for a wreath of ivy and berries; his back is leaning against a large wine-skin, holding the upper nozzle with his right hand. Hollow cast, left hand missing and minor damage to lower part of wine-skin. L 43 mm, H 29 mm Acquired on the European art market.

**180**



**30** A ROMAN BRONZE STATUETTE OF A THRACIAN HORSEMAN Circa 2nd-3rd century AD. The hero with long hair tied into a knot at the back of the head is shown wearing a cuirass or scale armour and a cloak over his shoulder; his right arm raised, and the left held out. Left lower arm missing, some surface pitting. H 75 mm Ex European private collection, acquired on the German art market in the late 1990s.

**250**



**31** A ROMAN BRONZE STATUETTE OF MERCURY Circa 2nd-3rd century AD. Representation of the messenger god Mercury (Hermes) with winged cap and herald's staff (caduceus). Both lower arms, the right lower leg, and the lower part of the herald's staff missing. H 75 mm Ex European private collection, acquired on the German art market in the late 1990s.

**80**



**32** A ROMAN SILVER PENDANT IN THE SHAPE OF A HERM Circa 1st-3rd century AD. Miniature four-cornered pillar surmounted by a male bust with modius (probably Jupiter Serapis); with arm stumps and stylised male genitalia adorning the midsection. Suspension loop at the back. H 25 mm Ex European private collection, acquired on the German art market before 2000.

**140**



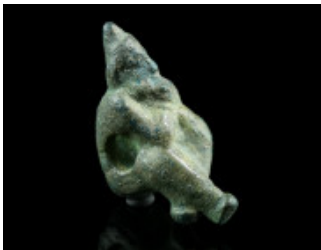
**33** A SMALL ROMAN SILVER STATUETTE OF ATHENA PARTHENOS Circa 1st-2nd century AD. The standing goddess is wearing a girded peplos and an Attic helmet. She is holding a large round shield set on the ground with her left hand, the right hand is missing. Part of the shield not preserved. H 27 mm Ex European private collection, acquired on the German art market before 2000.

**140**



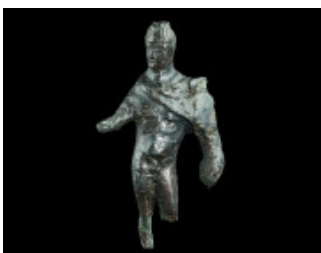
**34** A ROMAN BRONZE CLUB OF HERCULES Circa 2nd-3rd century AD. Probably a votive offering or an amulet. L 42 mm Ex European private collection, acquired on the German art market in the late 1990s.

**40**



**35** A SMALL ROMAN BRONZE FIGURE OF A BOUND BARBARIAN Circa 2nd-3rd century AD. The statuette depicts a bound male captive with a Phrygian cap and a long, full beard (an Eastern Barbarian). His hands are tied tightly with a rope. The statuette features three round holes: two horizontal, and one vertical. The function of these rare artefacts with their harsh depiction is unknown, but some connection with the Roman military would be plausible. H 38 mm Private European collection. Before, A. B. collection, UK, 1970s-early 2000s.

**300**



**36** A ROMAN BRONZE STATUETTE OF MERCURY Circa 2nd-3rd century AD. The god is shown nude but for a cloak and his winged cap, holding the herald's staff (caduceus) in his left hand. The right hand, the left lower leg and the top of the herald's staff are not preserved; some surface pitting. H 53 mm Ex European private collection, acquired on the German art market in the late 1990s.

**40**



**37** A ROMAN BRONZE STATUETTE OF PRIAPUS Circa 2nd-3rd century AD. The god of fertility is depicted wearing a modius and a long tunic, held up to contain a lapful of fruits. Unusually, no phallus is visible, and the god appears to be beardless. Some corrosion and damage to the patina. H 50 mm Ex European private collection, acquired on the German art market in the late 1990s.

**50**



**38** A ROMAN BRONZE STATUETTE OF A THRACIAN HORSEMAN Circa 2nd-3rd century AD. The hero with long hair tied into a knot at the back of the head is shown wearing a cuirass (?) and a cloak over his shoulder, his right arm raised, and the left held out. Left lower leg missing. H 49 mm Ex European private collection, acquired on the German art market before 2000.

**50**



**39** A ROMAN BRONZE MINIATURE STATUETTE OF VENUS ANADYOMENE Circa 1st-2nd century AD. Venus is depicted naked, standing in contrapposto on a small plinth, wringing her hair. Venus Anadyomene ('Emerging from the Sea') is one of the iconic representations of the goddess. Some earthen deposits. H 26 mm Ex European private collection, acquired on the German art market before 2000.

**80**



**40** A SMALL ROMAN BRONZE VOTIVE STATUETTE Circa 2nd-3rd century AD. A highly abstracted depiction of a Thracian horseman. The right arm raised, decorated with grooves, the left outstretched. Two diagonal incisions across the chest possibly indicate the shoulder strap of a quiver. Some earthen deposits and a scratch on the front. H 37 mm Ex European private collection, acquired on the German art market before 2000.

**40**



**41** TWO SMALL ROMAN LEAD STATUETTES OF GODDESSES Circa 2nd-3rd century AD. The larger figure holding a patera and standing on a flat base, the smaller figure standing on a moulded round base. Both draped. Head of larger piece damaged. H 41 mm, and H 36 mm Ex private collection, acquired on the German art market.

**50**



**42** A FINELY MODELLED ROMAN BRONZE STATUETTE OF MERCURY Circa 1st-2nd century AD. The messenger god is standing in contrapposto, shown nude but for a cloak hanging from his left shoulder. He is holding the herald's staff (caduceus) in his left hand, and a money bag (marsupium) in his right. The head, unfortunately, is lost and the upmost part of the herald's staff is missing. Otherwise, it is an excellent representation of this popular god of shopkeepers and merchants, travellers and transporters of goods, and thieves and tricksters. H 11.1 cm Ex Austrian private collection, acquired in the 1980s-90s.

**800**



**43** A SMALL ROMAN BRONZE STATUETTE OF VICTORY Circa 2nd-3rd century AD. The winged, draped figure is standing on a globe, a palm frond in the left arm and once probably a wreath in the hand of the uplifted right arm. Right arm and one wing missing. A bracket for attachment below the globe. Small statuettes of Victory as the present piece are known to have adorned (military) standards, see for example the votive standard from Kömlöd in Hungary, dedicated to Jupiter Dolichenus. H 63 mm Ex Austrian private collection, acquired in the 1980s-90s.

**90**



**44** A ROMAN BRONZE HORSE HEAD Circa 3rd-4th century AD. Hollow cast head with large eyes, pointed ears and a detailed mane. Filled with lead. Probably part of an applique. L 38 mm (max.) Ex European private collection, acquired on the German art market in the late 1990s.

**180**



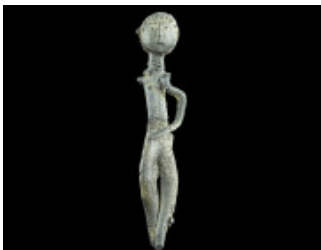
**45** A SMALL ROMAN DECORATED LEAD PLAQUE Circa 1st-2nd century AD. A fine lead plaque depicting an ornate water basin (labrum) surmounted by two dolphins and a scallop in the centre. H 21 mm Ex European private collection, acquired on the German art market before 2000.

**50**



**46** A ROMAN BRONZE TORSO WITH SWORD BELT AND SWORD Circa 1st-2nd century AD. Torso of a male figure, originally standing in contrapposto with the left arm uplifted, a cloak hanging from the left shoulder. A sword belt over the right shoulder and across the chest for suspension of the sword at the left hip. Head, lower arms, and lower legs now missing; sword broken. Some deposits, patina somewhat patchy. H 62 mm Ex Austrian private collection, acquired in the 1980s-90s.

**90**



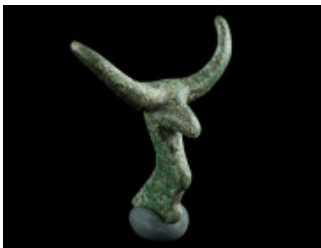
**47** A ROMAN LEAD VOTIVE FIGURE OF VENUS Circa 3rd-4th century AD. Highly abstracted figure of Venus in a very graphic style. Bent; right arm, feet and base not preserved. H 10.7 cm Acquired on the UK art market. Ex old European private collection.

**35**



**48** A ROMAN BRONZE LEFT FOOT WITH SANDAL Circa 1st-3rd century AD. Hollow cast furniture foot in the form of a human foot with sandal. The sandal with central tongue, side straps and laces. Pierced at the ankle and filled with lead for attachment to a piece of furniture. L 88 mm Ex European private collection, acquired on the German art market in the late 1990s.

**180**



**49** AN ARCHAIC BRONZE ATTACHMENT IN THE SHAPE OF A BULL Circa 9th-7th century BC. Stylised bull protome with long curved horns. L 42 mm Ex European private collection, acquired on the German art market before 2000.

**50**



**50** A SCYTHIAN BRONZE GRIFFIN HEAD Circa 6th century BC. Hollow cast head of a griffin with curved beak and large, round eyes. Rear part of the head not preserved. L 47 mm Ex European private collection, acquired on the German art market before 2000.

**50**



**51** AN IRON AGE/CELTIC BRONZE HEAD OF A BULL Circa 5th-3rd century BC. Solid cast protome (head and neck) of a bull with long, curved horns. Set on a short, decorated rod/handle. Fixed to a modern base. Tooled and repatinated. H 52 mm (without modern base) Ex Austrian private collection W. D. (died 2007).

**50**



**52** A SMALL CELTIC BRONZE FIGURE Circa 3rd-1st century BC. Standing male figure, probably a votive or an amulet. H 51 mm Austrian private collection. Acquired on the European art market.

**450**



**53** A GREEK BRONZE PLAQUE WITH A WINGED GODDESS Circa 5th-3rd century BC. Rectangular bronze plaque worked in repoussé, depicting a winged goddess standing front, surmounting two flanking horses. The goddess with her head left, the arms outstretched and possibly a whip in her right hand; the horses facing each other. Remains of tinning; pierced at the top for attachment. Minor damage to edges. H 57 mm Austrian private collection. Acquired on the European art market.

**150**



**54** A MEDIEVAL GILT BRONZE CORPUS OF CHRIST Circa 12th-13th century AD. Expressive figure of crucified Christ from a processional cross. Christ is depicted with slim physique, wearing crown and perizonium (long loincloth), with his head leaning forward and slightly to the proper right side. Cast in the round, the back of the body flattened and hollowed out. Arms and legs broken; remains of gilding. H 87 mm Ex Austrian private collection Hofrat Dr. A. O., 1920-1994.

**180**



**55** A MARBLE HAND FROM A STATUE Circa 16th-17th century AD. Finely modelled male hand holding an attribute/implement, from a well under-life-sized statue; with remains of drapery. Small part of the drapery broken off. Smooth but dark/stained surface. L 73 mm, H 65 mm Ex Austrian private collection Hofrat Dr. A. O., 1920-1994.

**140**



**56** A ROMAN GOLD RING WITH A THYRSOS Circa 2nd century AD. Ring with flared shoulders and slightly raised oval bezel depicting a thyrsois, a staff with a taenia tied around the stem and surmounted by a pinecone, that is carried by Dionysos or satyrs. Somewhat worn with minor damage. Ring size 51 (EU); Gold! 3.74 g Ex European private collection, acquired on the German art market before 2000.

**400**



**57** A VERY FINE ROMAN CARNELIAN INTAGLIO WITH A MALE BUST Circa late 2nd-3rd century AD. Attractive and very skilfully carved oval intaglio showing a draped bust of a young man with the attribute of Mercury, the herald's staff (caduceus). The individualised features of the head suggest that a portrait was intended rather than a depiction of the god Mercury. The addition of the herald's staff expresses divine protection. Very minor chips to edge. H 14 mm Acquired on the Austrian art market. Ex old European private collection.

**700**





**58** A ROMAN GOLD LUNULA PENDANT Circa 2nd-3rd century AD. Crescent moon shaped (amulet) pendant, further adorned with twisted gold wire and granulation. With suspension loop. Somewhat bent and slightly damaged; one gold spiral reattached (glued). H 19 mm; Gold! 1.75 g Ex European private collection, acquired on the German art market before 2000.

**200**



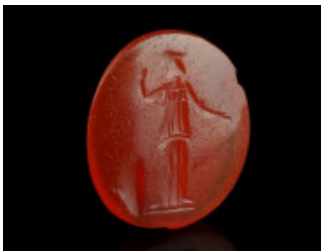
**59** A ROMAN SILVER RING WITH INSCRIPTION Circa 3rd century AD. Ring with flared and angled shoulders and a projecting round bezel. The shoulders and the hoop are decorated with deep grooves, the bezel is inscribed T MON B E C, probably an abbreviated Roman tria nomina in Greek letters. Ring size 52 (EU), outer diameter 24 mm (max.) Ex European private collection, acquired on the German art market before 2000.

**150**



**60** A ROMAN SILVER RING WITH A CARNELIAN INTAGLIO Circa 2nd century AD. Ring with flared shoulders and raised oval bezel set with a carnelian intaglio depicting Asclepius. The god is standing facing, head right, leaning on a serpent-entwined staff to right, and gathering the himation with his right hand. Minor chip to edge of intaglio. Ring size 45 (EU), outer diameter 20 mm (max.) Ex European private collection, acquired on the German art market before 2000.

**180**



**61** A ROMAN CARNELIAN INTAGLIO DEPICTING MINERVA Circa 1st-3rd century AD. Oval intaglio with the helmeted and draped goddess standing facing, head to right, the right arm held up, the left outstretched; a shield to the left. Somewhat worn surface and two chips to the edge. H 17 mm Acquired on the European art market.

**150**



**62** A ROMAN CARNELIAN INTAGLIO DEPICTING MERCURY Circa 1st-3rd century AD. Oval intaglio with the nude god standing facing, head to right, herald's staff (caduceus) and cloak in the lowered right arm, the left arm outstretched and a money bag (marsupium) in the left hand. H 13 mm Acquired on the European art market.

**150**



**63** TWO ROMAN BRONZE RING BEZELS WITH INTAGLIOS Circa 2nd-3rd century AD. Top parts of two small rings with oval intaglios. The carnelian intaglio depicts a stylised human head, the (loose) glass intaglio shows a draped female (?) bust with a branch (?) in front. Total length 21 mm, and 15 mm (incl. ring) Ex European private collection, acquired on the German art market in the late 1990s.

**60**



**64** A BYZANTINE SILVER GILT RING WITH A CROSS Circa 10th-12th century AD. Ring with ridged shoulders and offset round bezel engraved with an ornamental cross. Some earthen deposits on inside. Ring size 56 (EU) Acquired on the European art market.

**120**



**65** A ROMANO-CELTIC SILVER RING WITH SPIRAL Circa 1st century AD. With a large central spiral and overlapping ends secured with two spiral twists. Ring size 52 (EU), outer diameter 25 mm (max.) Ex Austrian private collection, acquired in the 1980s-90s.

**60**



**66** TWO VERY SMALL MEDIEVAL SILVER ARCHERS' RINGS Circa 14th-15th century AD. Two silver archers' rings with flat-section hoop and triangular extension. Both with incised decoration. Ring size 46, and 39 (EU) Ex European private collection, acquired on the German art market before 2000.

**50**



**67** A GROUP OF FOUR GREEK GOLD ORNAMENTS Circa 5th-4th century BC. Dress ornaments made of thin gold sheet and decorated with a dotted spiral design worked in repoussé. Four small, pierced holes each for sewing them onto clothing. L 21 mm each; Gold! 1.10 g (together) Ex Austrian private collection, acquired in the 1980s-90s.

**120**



**68** AN EASTERN CELTIC SILVER BRACELET Circa 2nd-1st century BC. Solid spiral bracelet with widened convex mid-section and flattened ends. Incised linear decoration. Diameter 77 mm; Silver! 44.12 g Ex Austrian private collection, acquired in the 1980s-90s.

**250**



**69** AN ELABORATELY WORKED EASTERN EUROPEAN SILVER GILT EARRING Circa 17th century AD. A fine, intricately designed silver gilt earring with filigree and granulation work. H 47 mm (total) Ex European private collection, acquired on the German art market in the late 1990s.

**80**



**70** A HIGHLY ELABORATE SILVER GILT BYZANTINE/SLAVIC TEMPLE RING Circa 10th-12th century AD. Hollow formed earring with twisted hook. The body decorated with filigree and granulation work. Body damaged on one side. H 45 mm Ex European private collection, acquired on the German art market before 2000.

**80**



**71** AN ELABORATELY DECORATED HEAVY SILVER GILT BUTTON Circa 17th century AD. Finely decorated, pinecone shaped button with loop. L 44 mm; Silver gilt! 31.57 g Ex European private collection, acquired on the German art market in the late 1990s.

**140**



**72** A LATE ROMAN BRONZE RING WITH AN ANTILOPE Circa 4th century AD. Ring with projecting circular bezel depicting a resting antelope to left. Ring size 60 (EU) Ex European private collection, acquired on the German art market before 2000.

**50**



**73** A ROMAN BRONZE RING WITH FORTUNA Circa 2nd century AD. Ring with flared shoulders and a slightly raised oval bezel depicting Fortuna with cornucopia and rudder standing right. Ring size 53 (EU) Ex Austrian private collection, acquired in the 1980s-90s.

**50**



**74** A LATE MEDIEVAL/EARLY MODERN BRONZE RING Circa 15th-16th century AD. With a projecting oval bezel decorated with an ornamental design. Ring size 57 (EU) Ex European private collection, acquired on the German art market in the late 1990s.

**50**



**75** A MEDIEVAL GILT BRONZE STIRRUP RING WITH AN EAGLE Circa 12th-13th century AD. Ring with an oval bezel depicting a crouching eagle with spread wings and its head turned back. The shoulders are decorated with an ornamental design. Ring size 56 (EU) Ex Austrian private collection, acquired in the 1980s-90s.

**50**



**76** A LATE ROMAN BRONZE RING WITH STYLISED CREATURES Circa 4th century AD. Ring with projecting circular bezel depicting some kind of creatures (?). Ring size 63 (EU) Ex European private collection, acquired on the German art market in the late 1990s.

**50**



**77** A LATE MEDIEVAL BRONZE HERALDIC RING WITH A CASTLE Circa 15th century AD. Ring with oval bezel engraved with a castle gateway. Ring size 59 (EU) Ex European private collection, acquired on the German art market before 2000.

**50**



**78** A LATE MEDIEVAL/EARLY MODERN BRONZE RING Circa 15th-16th century AD. With a raised round bezel decorated with an ornamental design. Ring size 61 (EU) Ex European private collection, acquired on the German art market in the late 1990s.

**40**



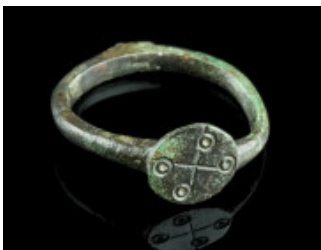
**79** A SMALL LATE ROMAN BRONZE RING WITH A MALE BUST Circa 4th century AD. Ring with projecting circular bezel depicting a draped male bust to left, a branch behind. Some defects to patina with minor corrosion. Ring size 42 (EU) Ex European private collection, acquired on the German art market in the late 1990s.

**40**



**80** A LATE MEDIEVAL/EARLY MODERN BRONZE RING Circa 15th-16th century AD. With a projecting round bezel decorated with an ornamental design. Ring size 57 (EU) Ex Austrian private collection, acquired in the 1980s-90s.

**40**



**81** A BYZANTINE BRONZE RING WITH A CROSS Circa 6th-7th century AD. Ring with circular bezel decorated with an incised cross and punched ring-and-dot motifs. Ring size 54 (EU) Ex European private collection, acquired on the German art market in the late 1990s.

**40**



**82** A MEDIEVAL BRONZE RING WITH A STYLISED FIGURE Circa 14th-15th century AD. Ring with hexagonal bezel depicting a standing nimbate figure with a spear, probably a warrior saint (?). Ring size 57 (EU) Ex European private collection, acquired on the German art market in the late 1990s.

**50**



**83** AN EARLY MODERN BRONZE RING Circa 16th-17th century AD. With an oval bezel decorated with an ornamental cross. Ring size 57 (EU) Ex European private collection, acquired on the German art market in the late 1990s.

**40**



**84** A MEDIEVAL BRONZE RING WITH A HIGHLY STYLISED FIGURE Circa 14th-15th century AD. Ring with lozenge-shaped bezel depicting a highly stylised standing figure, possibly an angel (?). Ring size 60 (EU) Ex European private collection, acquired on the German art market in the late 1990s.

**50**



**85** A MEDIEVAL BRONZE RING WITH A STYLISED FIGURE Circa 14th-15th century AD. Ring with oval bezel depicting a standing figure with spear and shield, possibly a warrior saint (?). Patina stripped and slightly retoned. Ring size 55 (EU) Ex European private collection, acquired on the German art market in the late 1990s.

**50**



**86** TWO LATE MEDIEVAL/EARLY MODERN BRONZE RINGS Circa 15th-16th century AD. Both with an offset bezel decorated with an ornamental design. Ring size 53 (EU) each Ex European private collection, acquired on the German art market in the late 1990s.

**50**



**87** A BYZANTINE AND THREE EARLY MODERN BRONZE RINGS Circa 5th-7th century, and 17th-18th century AD. A small Byzantine ring with a round bezel decorated with ring-and-dot, and three plain early modern rings. Ring size 52-59 (EU) Ex European private collection, acquired on the German art market in the late 1990s.

**50**



**88** THREE MEDIEVAL/EARLY MODERN BRONZE RINGS Circa 14th-17th century AD. Three rings of different shape and design with incised decoration. Ring size 56-58 (EU) Ex European private collection, acquired on the German art market in the late 1990s.

**50**



**89** THREE MEDIEVAL/EARLY MODERN BRONZE RINGS Circa 14th-17th century AD. Three rings of different shape and design with incised decoration. Ring size 55-58 (EU) Ex European private collection, acquired on the German art market in the late 1990s.

**50**



**90** THREE MEDIEVAL/EARLY MODERN BRONZE RINGS Circa 14th-17th century AD. Three rings of different shape and design with incised decoration. Ring size 50-59 (EU) Ex European private collection, acquired on the German art market in the late 1990s.

**50**



**91** THREE MEDIEVAL/EARLY MODERN BRONZE RINGS Circa 14th-17th century AD. Three rings of different shape and design with incised decoration. Ring size 51-56 (EU) Ex European private collection, acquired on the German art market in the late 1990s.

**50**



**92** TWO LATE MEDIEVAL/EARLY MODERN BRONZE RINGS Circa 15th-17th century AD. Both with an offset bezel decorated with an ornamental design. Ring size 58 (EU) each Ex European private collection, acquired on the German art market in the late 1990s.

**50**



**93** THREE MEDIEVAL/EARLY MODERN BRONZE RINGS Circa 14th-17th century AD. Three rings of different shape and design with incised decoration. Ring size 53-58 (EU) Ex European private collection, acquired on the German art market in the late 1990s.

**50**



**94** THREE LATE MEDIEVAL/EARLY MODERN BRONZE RINGS Circa 15th-17th century AD. Three rings of different shape and design; two with incised decoration, the third with a stylised standing figure holding a sword or spear (?). Ring size 50-57 (EU) Ex European private collection, acquired on the German art market in the late 1990s.

**50**



**95** THREE MEDIEVAL/EARLY MODERN BRONZE RINGS Circa 14th-17th century AD. Three rings of different shape and design with incised decoration. Ring size 51-56 (EU) Ex European private collection, acquired on the German art market in the late 1990s.

**50**



**96** A BYZANTINE AND THREE MEDIEVAL/EARLY MODERN BRONZE RINGS Circa 5th-7th century, and 14th-17th century AD. A small Byzantine ring with a double round bezel decorated with ring-and-dot, and two medieval/early modern rings of different shape and design with incised decoration. Ring size 48-57 (EU) Ex European private collection, acquired on the German art market in the late 1990s.

**50**





**97** THREE MEDIEVAL/EARLY MODERN BRONZE RINGS Circa 14th-17th century AD. Three rings of different shape and design with incised decoration. Ring size 54-56 (EU) Ex European private collection, acquired on the German art market in the late 1990s.

**50**



**98** THREE MEDIEVAL/EARLY MODERN BRONZE RINGS Circa 14th-17th century AD. Three rings of different shape and design with incised decoration. Ring size 40-62 (EU) Ex European private collection, acquired on the German art market in the late 1990s.

**50**



**99** A LATE ROMAN AND A SMALL BYZANTINE BRONZE RING Circa 4th century AD, and 5th-7th century AD. A late Roman ring with projecting circular bezel depicting a stylised standing figure with sceptre or spear within an architectural structure (probably a god in a temple), and a small Byzantine ring with a double round bezel decorated with ring-and-dot. Ring size 54, and 47 (EU) Ex Austrian private collection, acquired in the 1980s-90s.

**40**



**100** THREE MEDIEVAL/EARLY MODERN BRONZE RINGS Circa 14th-17th century AD. Three rings of different shape and design with incised and/or punched decoration. Ring size 45-56 (EU) Ex European private collection, acquired on the German art market in the late 1990s.

**50**



**101** TWO BYZANTINE AND A MEDIEVAL BRONZE RING Circa 5th-7th century, and 14th-15th century AD. Two Byzantine rings with oval bezel depicting a cross and a star, respectively, and a decorated medieval ring with oval bezel. Ring size 49-56 (EU) Ex European private collection, acquired on the German art market in the late 1990s.

**50**



**102** THREE MEDIEVAL/EARLY MODERN BRONZE RINGS Circa 14th-17th century AD. Three rings of different shape and design with incised decoration. Ring size 54-59 (EU) Ex European private collection, acquired on the German art market in the late 1990s.

**50**



**103** THREE MEDIEVAL/EARLY MODERN BRONZE RINGS Circa 14th-17th century AD. Three rings of different shape and design with incised and/or punched decoration. Ring size 57-59 (EU) Ex European private collection, acquired on the German art market in the late 1990s.

**50**



**104** THREE MEDIEVAL/EARLY MODERN BRONZE RINGS Circa 14th-17th century AD. Three rings of different shape and design with incised decoration. Ring size 48-59 (EU) Ex European private collection, acquired on the German art market in the late 1990s.

**50**



**105** A BYZANTINE AND A MEDIEVAL/EARLY MODERN BRONZE RING Circa 6th-9th century, and 15th-17th century AD. A Byzantine ring with projecting bezel with an ornamental design, and a medieval/early modern ring with incised decoration. Ring size 57 (EU) each Ex European private collection, acquired on the German art market in the late 1990s.

**50**



**106** A BYZANTINE BRONZE RELIQUARY CROSS WITH CHRIST AND MARY Circa 10th-12th century AD. A provincial reliquary cross (enkolpion) depicting in a highly stylised manner Christ crucified on one side, and probably Virgin Mary (?) with her hands upraised in prayer ('orans') on the other. H 61 mm Ex Austrian private collection, acquired in the 1980s-90s.

**100**



**107** A DECORATED BYZANTINE SILVER CROSS Circa 9th-12th century AD. Silver cross with incised and punched decoration, an incised cross in the centre. Two loops (with remains of iron) for attachment or suspension on the reverse. H 37 mm Ex European private collection, acquired on the German art market in the late 1990s.

**80**



**108** A BYZANTINE LEAD CROSS PENDANT Circa 9th-12th century AD. Small cross pendant depicting Christ crucified in an abstracted manner. On the reverse, a patriarchal cross. Suspension loop damaged. H 30 mm Acquired on the European art market.

**30**



**109** TWO INSCRIBED BYZANTINE LEAD CROSS PENDANTS Circa 9th-12th century AD. The smaller cross with relief decoration on the obverse, the reverse features the inscription  $\Phi\omega\text{C} - \text{Z}\omega\text{H}$  (Light - Life), taken from the Gospel of St. John 8:12. The larger cross decorated with dots and rings, on the reverse possibly an illegible inscription on the horizontal bar (?). Both with suspension loop. H 31 mm, and H 40 mm Ex European private collection, acquired on the German art market in the late 1990s.

**50**



**110** THREE BYZANTINE LEAD CROSS PENDANTS Circa 5th-7th century AD. Two plain cross pendants and one with incised decoration. All with a loop or hole for suspension. H 29-34 mm Ex European private collection, acquired on the German art market in the late 1990s.

**50**



**111** AN IRON AGE/EASTERN CELTIC BRONZE BOW FIBULA Circa 4th-3rd century BC. La Tène Type/Thracian Type fibula. Made of one piece with spring and pin; the foot terminates in a faceted conical knob. L 37 mm Ex Austrian private collection O. H., acquired between 1990-2010.

**30**



**112** AN IRON AGE/EASTERN CELTIC BRONZE BOW FIBULA Circa 4th-3rd century BC. La Tène Type/Thracian Type fibula. Made of one piece with spring and pin; the foot terminates in a faceted knob. L 29 mm Ex Austrian private collection O. H., acquired between 1990-2010.

**30**



**113** A CELTIC LA TENE PERIOD BRONZE FIBULA Circa 3rd century BC. The foot is bent upwards and attached to the bow. The bow is decorated with a rectangular plate that once was enamelled. Spring and pin not preserved. L 63 mm Ex Austrian private collection O. H., acquired between 1990-2010.

**40**



**114** A ROMAN BRONZE OPENWORK TRUMPET BROOCH Circa 2nd-3rd century AD. Fine plate brooch with a complex Celtic trumpet-style design. With hinged pin; part of the catch plate missing. L 41 mm Ex Austrian private collection, acquired in the 1980s-90s.

**80**



**115** A ROMAN ENAMELLED BRONZE POINTED OVAL BROOCH Circa 2nd century AD. With a raised centre decorated with coloured enamel and a scalloped border with a punched design of double concentric rings and dot. One lug of hinge and pin missing; border slightly damaged. L 54 mm Ex Austrian private collection, acquired in the 1980s-90s.

**80**



**116** A ROMAN BRONZE VOLUTE KNEE BROOCH Circa 2nd-3rd century AD. Knee brooch with a volute bow design and a high transverse catch plate. The wide bow is decorated with ring-and-dot motifs and zig-zag decoration ('Tremolierstich'). Hinged, iron pin not preserved. L 34 mm Ex Austrian private collection, acquired in the 1980s-90s.

**30**



**117** A ROMAN SILVER KNEE BROOCH Circa 2nd-3rd century AD. With faceted bow and small semicircular head plate. Hinged pin. Harshly cleaned, rough surface. L 25 mm Ex European private collection, acquired on the art market between circa 2000-2018.

**150**



**118** A ROMAN TINNED AND ENAMELLED BRONZE BIRD BROOCH Circa 2nd century AD. Brooch in the form of a bird with folded wings. Wings and tail inlaid with coloured enamel; notched edges. Head bent; hinged, pin missing. Some deposits. L 38 mm Ex Austrian private collection, acquired in the 1980s-90s.

**90**



**119** A LATE ROMAN BRONZE CROSSBOW BROOCH Circa 4th century AD. With arched bow and onion-shaped terminals ('Zwiebelknöpfe'). The top of the bow and the foot are decorated with a punched wavy band, the edges of the foot feature a carved design. With hinged pin. L 74 mm Ex European private collection, acquired on the German art market in the late 1990s.

**60**



**120** A LATE ROMAN BRONZE CROSSBOW BROOCH Circa 4th century AD. With arched bow and onion-shaped terminals ('Zwiebelknöpfe'). The top of the bow is decorated with a punched chevron pattern, the foot features punched ring-and-dot motifs. With hinged pin. L 60 mm Ex European private collection, acquired on the German art market in the late 1990s.

**40**



**121** A LARGE ROMAN BRONZE KNEE BROOCH Circa 2nd-3rd century AD. With faceted bow and hinged pin. L 50 mm Acquired on the UK art market.

**20**



**122** A ROMAN SILVER BIRD BROOCH Circa 2nd-3rd century AD. Modelled in the shape of a bird with folded wings. The body is decorated with two grooves along the wings on each side, the tail features a punched ring-and-dot motif. Remains of an intricate herringbone-pattern silver chain and further loops/rings for suspension of probably pendants. With spring and pin. Tail somewhat bent and cracked. L 34 mm Ex Austrian private collection, acquired in the 1980s-90s.

**150**



**123** A ROMAN BRONZE BOW BROOCH WITH BENT FOOT Circa 3rd century AD. Brooch with folded foot (umgeschlagenem Fuß) and punched decoration along the bow. A small knob and tubular 'wings' at the head. With hinged pin. L 54 mm Ex Austrian private collection, acquired in the 1980s-90s.

**40**



**124** A LATE ROMAN BRONZE CROSSBOW BROOCH Circa 4th century AD. With arched bow and onion-shaped terminals ('Zwiebelknöpfe'). The top of the bow and the foot with incised decoration, the foot further adorned with punched ring-and-dot motifs and notched edges. With hinged pin. Central knob and pin ancient but probably not belonging. L 79 mm Ex European private collection, acquired on the German art market in the late 1990s.

**80**



**125** A SMALL LATE ROMAN BRONZE CROSSBOW BROOCH Circa 4th century AD. With arched bow and onion-shaped terminals ('Zwiebelknöpfe'). The foot features a carved design. Hinged, pin possibly not belonging. L 46 mm Ex European private collection, acquired on the German art market in the late 1990s.

**40**



**126** A LARGE ROMAN BRONZE STRONGLY PROFILED BROOCH Circa 2nd-3rd century AD. A so-called 'Kräftig Profilierte Fibel'. The foot terminates in a large protruding knob. With spring and pin. Wonderful green patina! L 62 mm Ex Austrian private collection, acquired in the 1980s-90s.

**40**



**127** A SMALL ROMAN ENAMELLED BRONZE BROOCH Circa late 1st-2nd century AD. With a profiled foot, an enamelled 'bow' and a short head with loop. With hinged pin. L 32 mm Ex European private collection, acquired on the German art market in the late 1990s.

**50**



**128** A ROMAN BRONZE OPENWORK DISK BROOCH Circa 2nd-3rd century AD. With an openwork triskeles (or triple spiral) motif. Hinged pin. Diameter 30 mm Ex European private collection, acquired on the German art market in the late 1990s.

**50**



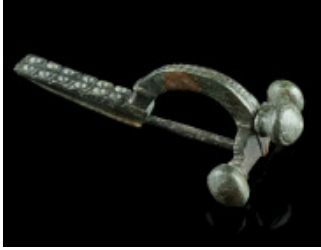
**129** A ROMAN TINNED BRONZE OPENWORK PELTA BROOCH Circa 2nd-3rd century AD. Plate brooch with an openwork pelta design and a notched edge. Remains of tinning. Hinged; pin probably not belonging. H 31 mm Ex European private collection, acquired on the German art market in the late 1990s.

**50**



**130** A ROMAN BRONZE S-SHAPED BROOCH Circa 2nd-3rd century AD. Plate brooch in the shape of a reversed S, the expanded ends with notched edges. Hinged; pin ancient but probably not belonging. Catch plate partly restored. L 35 mm (max.) Ex European private collection, acquired on the German art market in the late 1990s.

**60**



**131** A LATE ROMAN BRONZE CROSSBOW BROOCH Circa 4th century AD. With arched bow and onion-shaped terminals ('Zwiebelknöpfe'). The top of the bow is decorated with a punched chevron pattern, the foot features punched or drilled dots separated by deep grooves. With hinged pin. Central knob and pin ancient but probably not belonging. L 58 mm Ex European private collection, acquired on the German art market in the late 1990s.

**40**



**132** A ROMAN BRONZE EARLY CROSSBOW BROOCH Circa 3rd century AD. So-called 'Scharnierarmfibel', a precursor of the classical crossbow brooch. With arched bow, short foot with notched decoration, and a single head knob. Long tubular crossbar and hinged pin. L 64 mm Ex Austrian private collection, acquired in the 1980s-90s.

**60**



**133** A LATE ROMAN BRONZE CROSSBOW BROOCH Circa 4th century AD. With arched bow and faceted onion-shaped terminals ('Zwiebelknöpfe'). Bow and foot decorated with an interlace band, the foot is further adorned with a carved design. With hinged pin. Central knob and pin ancient but not belonging. L 74 mm Ex European private collection, acquired on the German art market in the late 1990s.

**80**



**134** A ROMAN BRONZE OPENWORK TRUMPET BROOCH Circa 2nd-3rd century AD. Plate brooch with a complex Celtic trumpet-style design. Hinge and pin repaired. L 35 mm Ex European private collection, acquired on the German art market in the late 1990s.

**50**





**135** A ROMAN ENAMELLED BRONZE BROOCH Circa late 1st-2nd century AD. With a profiled foot, an enamelled bow (a series of small squares with red and green enamel) and a short head. With hinged pin. L 34 mm Ex European private collection, acquired on the German art market in the late 1990s.

**80**



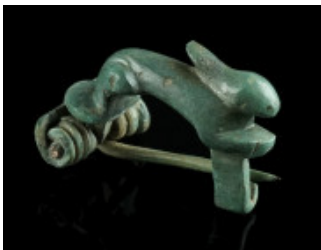
**136** A ROMAN BRONZE STRONGLY PROFILED BROOCH Circa 2nd century AD. A so-called 'Kräftig Profilierte Fibel' with trapezoid foot decorated with a zigzag pattern (tremolo). With spring, pin restored. L 41 mm Ex European private collection, acquired on the German art market in the late 1990s.

**40**



**137** A ROMAN BRONZE OPENWORK DISK BROOCH Circa 2nd-3rd century AD. With an openwork design and a notched edge. Hinged, pin ancient but probably not belonging. Diameter 31 mm Ex European private collection, acquired on the German art market in the late 1990s.

**50**



**138** A ROMAN BRONZE HARE BROOCH Circa 2nd-3rd century AD. Knee brooch with small semicircular headplate, modelled three-dimensional in the shape of a hare. Spring and pin ancient but not belonging; spring repaired. Nice green patina! L 28 mm Acquired on the UK art market. Ex old European private collection.

**80**



**139** A ROMAN ENAMELLED BRONZE BROOCH Circa late 1st-2nd century AD. With a short foot and an enamelled bow (a series of small triangles with red and blue enamel). Hinged pin. L 30 mm Ex European private collection, acquired on the German art market in the late 1990s.

**70**



**140** A LATE ROMAN BRONZE CROSSBOW BROOCH Circa 4th century AD. With arched bow and onion-shaped terminals ('Zwiebelknöpfe'). The top of the bow is decorated with a punched chevron pattern, the foot features a carved design. With hinged pin. Central knob and pin ancient but probably not belonging. L 57 mm Ex European private collection, acquired on the German art market in the late 1990s.

**40**



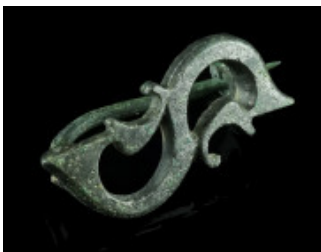
**141** A ROMAN SILVER KNEE BROOCH Circa 2nd-3rd century AD. With faceted bow and small semicircular head plate. Hinged pin. Harshly cleaned. L 32 mm Ex European private collection, acquired on the art market between circa 2000-2018.

**120**



**142** A ROMAN BRONZE HORSE BROOCH Circa 2nd-3rd century AD. Plate brooch in the form of a grazing horse to left, set on a horizontal baseline. Worked in relief, the mane indicated with deep grooves, the eye with ring-and-dot. Hinged, pin ancient but not belonging; catch plate partly repaired. L 37 mm Ex European private collection, acquired on the German art market in the late 1990s.

**50**



**143** A ROMAN TINNED BRONZE S-SHAPED BROOCH Circa 2nd-3rd century AD. S-shaped openwork plate brooch with expanded ends. A stylised ivy leaf to each side. Hinged; pin ancient but possibly not belonging. L 37 mm Ex European private collection, acquired on the German art market in the late 1990s.

**80**



**144** A LATE ROMAN BRONZE CROSSBOW BROOCH Circa 4th century AD. With arched bow and faceted onion-shaped terminals ('Zwiebelknöpfe'). The top of the bow is decorated with a punched chevron pattern, the foot features a carved design and two punched or drilled dots at the terminal. With hinged pin. Central knob and one side knob ancient but not belonging; pin probably reattached. L 79 mm Ex European private collection, acquired on the German art market in the late 1990s.

**60**



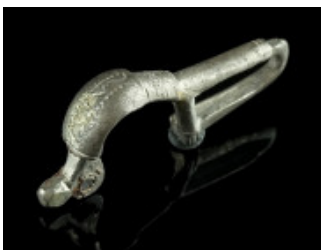
**145** A LATE ROMAN BRONZE CROSSBOW BROOCH Circa 4th century AD. With arched bow and onion-shaped terminals ('Zwiebelknöpfe'). Decorated with two deep grooves along the bow and the foot. The foot is further adorned with punched ring-and-dot motifs and a notched edge at the terminal. Hinged, pin probably not belonging. L 66 mm Ex European private collection, acquired on the German art market in the late 1990s.

**60**



**146** A LATER ROMAN EQUAL-ENDED BRONZE BROOCH WITH HORSE HEADS Circa 4th century AD. Equal-ended bow brooch with two stylised horse heads. The manes are indicated by notched edges. With spring and pin, spring somewhat bent. L 39 mm Ex Austrian private collection, acquired in the 1980s-90s.

**90**



**147** A BYZANTINE SILVER BROOCH WITH BENT FOOT Circa 6th-7th century AD. Cast bow brooch with folded foot ('umgeschlagenem Fuß'); incised and punched decoration. Iron spring and pin not preserved. L 38 mm Ex European private collection, acquired on the art market between circa 2000-2018.

**150**



**148** A LATE ANTIQUE UNFINISHED BRONZE CASTING OF A BIRD BROOCH Circa 4th-6th century AD. Unfinished casting of a bird brooch with folded wings. The bronze casting was removed from the mould in antiquity but never completed. L 38 mm Ex European private collection, acquired on the German art market in the late 1990s.

**40**



**149** A BYZANTINE BRONZE BROOCH WITH BENT FOOT Circa 6th-7th century AD. Cast bow brooch with folded foot (umgeschlagenem Fuß). Incised and punched decoration. With iron spring , pin repaired (?). L 64 mm Ex European private collection, acquired on the German art market in the late 1990s.

**40**



**150** A LATE ANTIQUE BRONZE BIRD BROOCH Circa 5th-6th century AD. Brooch in the form of a bird with swept back wings and fantail. Body and head are decorated with grooves and punched ring-and-dot motifs. With iron spring, pin restored. L 37 mm Ex European private collection, acquired on the German art market in the late 1990s.

**80**



**151** A BYZANTINE SILVER BROOCH WITH BENT FOOT Circa 6th-7th century AD. Cast bow brooch with folded foot ('umgeschlagenem Fuß'); incised and punched decoration. Spring and pin not preserved. L 38 mm Ex European private collection, acquired on the art market between circa 2000-2018.

**150**



**152** A MIGRATION PERIOD BRONZE DISK BROOCH Circa 5th-6th century AD. Disk brooch with a central boss and four peripheral bird head shaped lugs. The disk is adorned with punched decoration, the eyes of the birds are indicated with ring-and-dot. The lug for the spring and the catch plate are separately attached (riveted); the iron spring and pin are not preserved. Diameter 36 mm (incl. bird heads) Ex Austrian private collection, acquired in the 1980s-90s.

**100**



**153** A EUROPEAN MIGRATION PERIOD BRONZE CICADA BROOCH Circa 5th-6th century AD. Plate brooch in the shape of a stylised cicada. Worked in relief, the eyes punched. Catch plate, lug and axis bar preserved; spring and pin missing. L 46 mm Ex Austrian private collection, acquired in the 1980s-90s.

**90**



**154** AN OSTROGOTHIC BRONZE BROOCH Circa 5th-6th century AD. Brooch with semicircular head plate with five knobs and lozenge-shaped foot with four peripheral lugs and a knobbed terminal. Decorated with chip carved ornament. Spring and pin not belonging. L 54 mm Ex European private collection, acquired on the German art market in the late 1990s.

**80**



**155** A EUROPEAN MIGRATION PERIOD BRONZE BROOCH Circa 5th century AD. Bow brooch with triangular head plate and lozenge-shaped foot; decorated with chip carved ornament. Spring and pin made of iron not preserved. L 59 mm Ex Austrian private collection, acquired in the 1980s-90s.

**30**



**156** A BYZANTINE BRONZE BREAD STAMP Circa 5th-8th century AD. Composite shape (crescent and circle), with an abbreviated Greek inscription and a small, pierced handle at the back. L 45 mm Ex European private collection, acquired on the German art market in the late 1990s.

**50**



**157** A BYZANTINE BRONZE STAMP SEAL WITH INSCRIPTION Circa 10th-12th century AD. Conical-shaped seal matrix with suspension loop. The inscription reads + MHXAHA (Michael) AM. Diameter 15 mm, H 24 mm Ex European private collection, acquired on the German art market in the late 1990s.

**60**



**158** A ROMAN BRONZE CIRCULAR SEAL BOX Circa 1st century AD. Base and lid of equal form and size, joined by a hinge. The lid with concentric rings and a central hole; four holes on the base. Diameter 16 mm, Length 21 mm Ex European private collection, acquired on the German art market in the late 1990s.

**40**



**159** A ROMAN TERRACOTTA OIL LAMP WITH A GOAT Circa 1st-2nd century AD. Oil lamp with rounded body, concave discus, and round voluted nozzle; the discus is decorated with a goat standing left. The base is stamped with the maker's mark LMVNSVC. Red-brown slip. Loeschke Type IV. Intact. L 96 mm Ex Austrian private collection, acquired in the 1980s-90s.

**120**



**160** A ROMAN BRONZE KEY RING Circa 1st-3rd century AD. With a short projecting shank and an offset key bit. L 31 mm Ex Austrian private collection, acquired in the 1980s-90s.

**40**



**161** A ROMAN BRONZE HAIRPIN WITH A KEY Circa 1st-3rd century AD. Hairpin with the head in the form of a key; pointed end broken. L 76 mm Ex European private collection, acquired on the German art market in the late 1990s.

**40**



**162** A GROUP OF THREE ROMAN BRONZE KEYS Circa 1st-3rd century AD. Two key rings with short projecting shanks and offset key bits, and a key with flattened rectangular loop handle. L 29-60 mm Ex Austrian private collection, acquired in the 1980s-90s.

**50**



**163** TWO ROMAN BRONZE KEYS Circa 1st-4th century AD. A key ring with short projecting shank and offset key bit, and a small Late Roman rotary key with hollow, tubular shank and circular bow. L 32 mm, and L 30 mm Ex Austrian private collection, acquired in the 1980s-90s.

**40**



**164** A MEDIEVAL SILVER STRAP-END WITH MYTHICAL CREATURES Circa 9th-11th century AD. Openwork interlaced strap end with two intertwined winged beasts. At the top, two copper or bronze rivets and remains of a washer at the back for attachment to the belt. L 32 mm Ex Austrian private collection, acquired in the 1980s-90s.

**50**



**165** A LATE ROMAN BRONZE BELT BUCKLE Circa 4th-5th century AD. Buckle with rectangular plate decorated in repoussé. Two rivet holes. Probably from a military belt. Edges damaged. L 62 mm Ex Austrian private collection, acquired in the 1980s-90s.

**50**



**166** A GROUP OF THREE BRONZE BELT BUCKLES WITH ANIMALS Circa 9th-11th century AD. Byzantine/First Bulgarian Empire. Rectangular plates from belt buckles with two stylised lions and a griffin striding to left; with attachment lugs. L 31-39 mm Ex European private collection, acquired on the German art market in the late 1990s.

**90**



**167** TWO LATE ANTIQUE BRONZE BELT BUCKLES Circa 4th-6th century AD. Two belt buckles with a ridged design. Thorns ancient but probably not belonging. L 42 mm, and L 43 mm (max.) Ex European private collection, acquired on the German art market in the late 1990s.

**40**



**168** A BYZANTINE SILVER BELT FITTING Circa 6th-7th century AD. Fitting of composite shape with incised decoration. Some deposits. L 31 mm Ex European private collection, acquired on the German art market before 2000.

**50**



**169** A GROUP OF SIX ROMAN BRONZE DECORATIVE OBJECTS Circa 2nd-3rd century AD. Four belt/strap decorations of different design, a small pendant, and a knife guard/bolster. L 16-56 mm Ex Austrian private collection, acquired in the 1980s-90s.

**45**



**170** TWO INSCRIBED ANCIENT BRONZE WEIGHTS Circa 5th-7th century AD (for the solidus weight). A Byzantine square solidus weight inscribed SOL over I flanked by two palm branches (one solidus of 4.33 g), and a large square ancient weight with the inlaid letters KA. L 15 x 15 mm (4.33 g), and L 38 x 38 (83.40 g) Ex Austrian private collection, acquired in the 1980s-90s.

**50**



**171** A GROUP OF FOUR BYZANTINE BRONZE SPHERICAL WEIGHTS Circa 5th-7th century AD. Commercial weights. The two small weights inscribed Γ, the two larger weights anepigraphic. Diameter 9-27 mm, Weight 3.30-74.46 g Ex European private collection, acquired on the German art market in the late 1990s.

**50**





**172** A LATE ANTIQUE YELLOW-GREEN GLASS BEAKER Circa 4th-5th century AD. Conical glass beaker with flat base and flaring mouth. Halfway on the body a pattern of blue dots, a faint wheel-cut band below and above. Intact. Calcareous deposits on the inside. H 10.2 cm Ex European private collection, acquired on the German art market in the late 1990s.

**250**



**173** A BYZANTINE LEAD IMPLEMENT/TOOL Circa 10th-13th century AD. Pyramidal lead object with remains of iron for suspension at the top and bottom. Possibly a weight or plumb bob (?). The sides are decorated with two crosses, a symbol, and an inscription. H 40 mm, Weight 91.37 g Ex European private collection, acquired on the German art market before 2000.

**80**



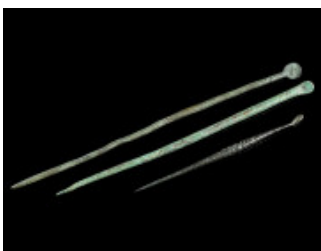
**174** AN OTTOMAN BRONZE POCKET COIN SCALE Circa 16th-18th century AD. Consisting of two pieces that were originally hinged together with an iron axis bar (only traces of iron remain). Decorated with grooves and punched dots; edges notched. Cleaned, with bare metal visible in some areas. L 10.7 cm Ex European private collection, acquired on the German art market in the late 1990s.

**80**



**175** A GROUP OF THREE ROMAN BRONZE HAIRPINS Circa 1st-4th century AD. All with plain head; one pin resharpened. L 10.4-12.2 cm Ex European private collection, acquired on the German art market in the late 1990s.

**50**



**176** A GROUP OF THREE ROMAN BRONZE LIGULAE Circa 1st-4th century AD. Pin-like medical instruments or cosmetic spoons with a small scoop at one end (ligula). L 6.6-11.2 cm Ex European private collection, acquired on the German art market in the late 1990s.

**40**



**177** A GROUP OF THREE ROMAN BRONZE SEWING NEEDLES Circa 1st-4th century AD. All with flat head, two with pointed terminal. L 9.6-12.3 cm Ex European private collection, acquired on the German art market in the late 1990s.

**50**



**178** A GROUP OF FOUR ROMAN BONE HAIRPINS Circa 1st-4th century AD. Three pins with terminal knob or a plain head; a further pin with broken head and repaired stem. One pin resharpener. L 8.1-11.1 cm Ex European private collection, acquired on the German art market in the late 1990s.

**40**



**179** A GROUP OF TWO ROMAN BONE SEWING NEEDLES AND A HAIRPIN Circa 1st-4th century AD. Two needles with flat head, and a pin with plain head. L 10.3-11 cm Ex European private collection, acquired on the German art market in the late 1990s.

**35**



**180** A ROMAN BRONZE MILITARY DIPLOMA FRAGMENT Circa later 2nd-early 3rd century AD. Fragment of a diploma issued to an unknown auxiliary soldier following twenty-five years of service, awarding to him and his family Roman citizenship. The bottom fragment of tabella I (outside) reads: [DESCRIPTVM ET RECOGNITVM EX TABVLA AEREA QVAE FIXA EST ROMAE IN MUR]O POST T [EMPLVM DIVI AVGVSTI AD MI]NERV[AM], 'Copied and checked from the bronze tablet which is posted at Rome on the wall behind the temple of the deified Augustus, by the temple of Minerva'. H 16 mm, L 21 mm Ex Austrian private collection, acquired in the 1980s-90s.

**40**



**181** A SMALL ROMAN BRONZE TABULA ANSATA WITH INSCRIPTION Circa 1st-3rd century AD. Plaque made of bronze sheet with a punched, abbreviated inscription. Probably a name tag from a military context, indicating the abbreviated owner's name of a piece of equipment. Pierced twice for attachment. L 50 mm, H 39 mm Ex Austrian private collection, acquired in the 1980s-90s.

**40**



**182** A CELTIC IRON SPUR FROM THE MIDDLE/LATE LA TENE PERIOD Circa 3rd-1st century BC. Prick spur with central goad and side arms with large loop terminals. Fantastic original iron patina! L 93 mm Private European collection. Before, A. B. collection, UK, 1970s-early 2000s.

**150**



**183** A GROUP OF THREE BRONZE ARROWHEADS Circa 2nd-1st millennium BC. A group of (votive?) arrowheads made of thin bronze sheet; of different shape/design. One with two pierced holes, another with dotted decoration (cut out from a larger piece of sheet metal). Some damage to edges and surface, slightly bent. L 36-59 mm Ex European private collection, acquired on the German art market before 2000.

**80**



**184** A GROUP OF THREE BRONZE ARROWHEADS FROM THE GREEK WORLD Circa 7th-3rd century BC. So-called 'Scythian' arrowheads, that were in fact used by different tribes and cultures. All with socket. L 28-39 mm Acquired on the UK art market. Ex old European private collection.

**30**



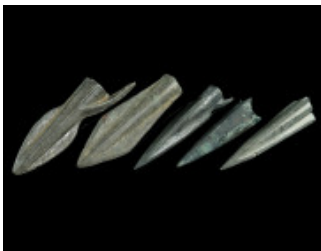
**185** A GROUP OF FIVE BRONZE ARROWHEADS FROM THE GREEK WORLD Circa 7th-3rd century BC. So-called 'Scythian' arrowheads, that were in fact used by different tribes and cultures. All with socket. One with spur and some damage to blade and midrib. L 24-34 mm Ex European private collection, acquired on the German art market before 2000.

**40**



**186** A GROUP OF THREE BRONZE ARROWHEADS FROM THE GREEK WORLD Circa 7th-3rd century BC. So-called 'Scythian' arrowheads, that were in fact used by different tribes and cultures. All with socket, one with spur. L 22-39 mm Acquired on the UK art market. Ex old European private collection.

**30**



**187** A GROUP OF FIVE BRONZE ARROWHEADS FROM THE GREEK WORLD Circa 7th-3rd century BC. So-called 'Scythian' arrowheads, that were in fact used by different tribes and cultures. All with socket, one with spur. L 27-41 mm Ex European private collection, acquired on the German art market before 2000.

**40**



**188** A ROMAN SILVER VOTIVE SPEAR HEAD Circa 1st-3rd century AD. With leaf-shaped blade; remains of a bronze shaft in the socket. Blade somewhat damaged. L 44 mm Ex European private collection, acquired on the German art market before 2000.

**50**



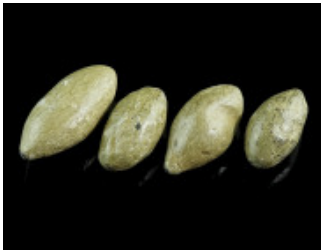
**189** TWO MEDIEVAL IRON CALTROPS Circa 13th-16th century AD. An area denial weapon with four sharp spikes arranged in such a manner that one of them always pointed upward. H 37 mm, and H 50 mm (max.) Ex European private collection, acquired on the German art market before 2000.

**70**



**190** A MEDIEVAL IRON BARBED CALTROP Circa 13th-15th century AD. An area denial weapon with four sharp barbed spines arranged in such a manner that one of them always pointed upward. H 40 mm Ex Austrian private collection O. H., acquired between 1990-2010.

**30**



**191** A GROUP OF FOUR GREEK/ROMAN LEAD SLING-SHOTS Circa 3rd century BC - 1st century AD. Almond shaped sling bullets of different size. L 24-33 mm Ex European private collection, acquired on the German art market in the late 1990s.

**50**



**192** A GROUP OF FOUR GREEK/ROMAN LEAD SLING-SHOTS Circa 3rd century BC - 1st century AD. Almond shaped sling bullets of different size. L 28-34 mm Ex European private collection, acquired on the German art market in the late 1990s.

**50**



**193** A HEAVY MEDIEVAL IRON CROSSBOW BOLT Circa 14th-15th century AD. Four-sided socketed crossbow bolt with sharp diamond-shaped tip. L 102 mm Ex Austrian private collection Hofrat Dr. A. O., 1920-1994.

**20**



**194** A LARGE EUROPEAN LATE BRONZE AGE TWISTED TORQUE Circa 1000-800 BC. Twisted hoop of solid bronze, the plain tapering ends with flattened coiled terminals. Diameter 23.8 cm Acquired on the UK art market. Ex old European private collection.

**300**



**195** A EUROPEAN LATE BRONZE AGE TWISTED TORQUE Circa 1000-800 BC. Twisted hoop of solid bronze, the plain tapering ends with flattened coiled terminals. Diameter 20.9 cm Acquired on the UK art market. Ex old European private collection.

**180**



**196** A EUROPEAN LATE BRONZE AGE SOCKETED AXE HEAD Circa 1000-800 BC. Socketed and looped bronze axe head with banded collar and ribbed decoration; gently flared, curved blade. L 76 mm From the inventory of an Austrian art dealer, acquired on the European art market.

**150**



**197** A EUROPEAN LATE BRONZE AGE SOCKETED AXE HEAD Circa 1000-800 BC. Socketed and looped bronze axe head with banded collar and ribbed decoration. L 72 mm From the inventory of an Austrian art dealer, acquired on the European art market.

**150**



**198** A EUROPEAN LATE BRONZE AGE SOCKETED AXE HEAD Circa 1000-800 BC. Socketed and looped bronze axe head with triple-banded collar and elaborate ribbed decoration. L 74 mm From the inventory of an Austrian art dealer, acquired on the European art market.

**160**



**199** A EUROPEAN LATE BRONZE AGE SOCKETED AXE HEAD Circa 1000-800 BC. Socketed and looped bronze axe head with double-banded collar and ribbed decoration. L 80 mm From the inventory of an Austrian art dealer, acquired on the European art market.

**170**



**200** A EUROPEAN LATE BRONZE AGE SOCKETED CHISEL Circa 1000-800 BC. Socketed bronze chisel with ribbed decoration. L 96 mm From the inventory of an Austrian art dealer, acquired on the European art market.

**120**



**201** A SMALL EUROPEAN LATE BRONZE AGE SOCKETED CHISEL Circa 1000-800 BC. Socketed plain bronze chisel with narrow blade. L 50 mm From the inventory of an Austrian art dealer, acquired on the European art market.

**80**



**202** A EUROPEAN LATE BRONZE AGE CHISEL Circa 1000-800 BC. Bronze chisel with narrow blade and decorated shaft. L 68 mm From the inventory of an Austrian art dealer, acquired on the European art market.

**80**



**203** A EUROPEAN LATE BRONZE AGE SPEAR HEAD Circa 1200-800 BC. Socketed bronze spear head with leaf-shaped blade. The shaft tapers through the length of the spear head to the point. A hole on either side of the socket for fixing. Minor casting flaws and blade bent. L 14.8 cm Acquired on the UK art market. Ex old European private collection.

**250**



**204** A EUROPEAN LATE BRONZE AGE SPEAR HEAD Circa 1200-800 BC. Socketed bronze spear head with slender leaf-shaped blade. The shaft tapers through the length of the spear head to the point. A hole on either side of the socket for fixing. Blade somewhat bent. L 10.8 cm Acquired on the UK art market. Ex old European private collection.

**180**



**205** A EUROPEAN LATE BRONZE AGE SPEAR HEAD Circa 1200-800 BC. Socketed bronze spear head with leaf-shaped blade. The faceted shaft tapers through the length of the spear head to the point. A hole on either side of the socket for fixing. Blade slightly bent and with two small cracks. L 10.2 cm Acquired on the UK art market. Ex old European private collection.

**180**



**206** A SMALL EUROPEAN LATE BRONZE AGE SPEAR HEAD Circa 1200-800 BC. Unusually small socketed bronze spear head with leaf-shaped blade. A hole on either side of the socket for fixing. Minor casting flaws. L 74 mm From the inventory of an Austrian art dealer, acquired on the European art market.

**80**



**207** A EUROPEAN LATE BRONZE AGE SOCKETED AXE HEAD Circa 1000-800 BC. Socketed and looped bronze axe head. L 88 mm Ex Austrian private collection Hofrat Dr. A. O., 1920-1994.

**100**



**208** A LARGE EUROPEAN LATE BRONZE AGE SICKLE BLADE Circa 1200-1000 BC. Bronze sickle blade with a raised rib to the outside of the curve and a knob at one end; with one flat face. Beautiful green patina! L 23.5 cm (max.) Ex European private collection, acquired on the German art market before 2000.

**80**



**209** A EUROPEAN LATE BRONZE AGE SICKLE Circa 1000-800 BC. Bronze sickle with a raised rib to the outside of the curve; with one flat face. L 16.9 cm (max.) Acquired on the UK art market. Ex old European private collection.

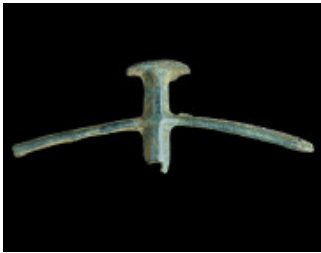
**135**





**210** A EUROPEAN LATE BRONZE AGE SICKLE Circa 1000-800 BC. Bronze sickle with two raised ribs to the outside of the curve and a ribbed handle; with one flat face. L 17.2 cm (max.) Acquired on the UK art market. Ex old European private collection.

**135**



**211** A EUROPEAN MIDDLE BRONZE AGE DOUBLE-ARMED 'INSIGNIA' Circa 1350-1200 BC. Small double-armed bronze 'insignia' (Doppelarmknauf); remnants of the casting along the edges. L 12.9 cm Austrian private collection. Acquired on the Austrian art market.

**100**



**212** A LARGE EUROPEAN LATE BRONZE AGE SPIRAL ARMBAND Circa 1200-800 BC. Bronze spiral armband with a raised central ridge. Diameter 97 mm From the inventory of an Austrian art dealer, acquired on the European art market.

**90**



**213** A EUROPEAN LATE BRONZE AGE BRACELET Circa 1000-800 BC. Bronze bracelet with tapered ends. Diameter 85 mm From the inventory of an Austrian art dealer, acquired on the European art market.

**50**



**214** A EUROPEAN LATE BRONZE AGE BRACELET Circa 1000-800 BC. Bronze bracelet with a beautiful green patina. Some pitting. Diameter 73 mm From the inventory of an Austrian art dealer, acquired on the European art market.

**50**



**215** A EUROPEAN LATE BRONZE AGE BRACELET Circa 1000-800 BC. Bronze bracelet with remains of an elaborate incised decoration; D-shaped in section. A few spots of corrosion. Surface treated with a thin layer of protective acrylic resin (Paraloid). Diameter 75 mm Acquired on the UK art market. Ex old European private collection.

**50**



**216** A EUROPEAN LATE BRONZE AGE DECORATED BRACELET Circa 1000-800 BC. Bronze bracelet with tapered ends and incised decoration. Diameter 65 mm From the inventory of an Austrian art dealer, acquired on the European art market.

**70**



**217** A EUROPEAN LATE BRONZE AGE BRACELET Circa 1000-800 BC. Bronze bracelet with tapered pointed ends. Diameter 62 mm Acquired on the UK art market. Ex old European private collection.

**50**



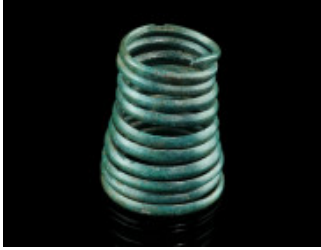
**218** A EUROPEAN LATE BRONZE AGE SPIRAL ARMBAND Circa 1200-800 BC. Bronze spiral with a gently raised central ridge. Diameter 57 mm, H 33 mm From the inventory of an Austrian art dealer, acquired on the European art market.

**100**



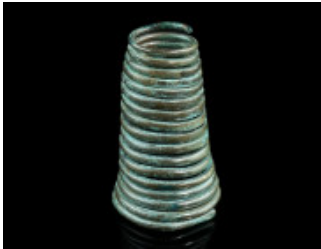
**219** A EUROPEAN LATE BRONZE AGE SPIRAL Circa 1200-800 BC. Bronze spiral with a gently raised central ridge. Diameter 43 mm, H 26 mm From the inventory of an Austrian art dealer, acquired on the European art market.

**80**



**220** A EUROPEAN LATE BRONZE AGE CONICAL SPIRAL Circa 1200-800 BC. Small conical bronze spiral; probably a spiral hair ring. Wonderful green patina. Slightly chipped; one crack. Diameter 23 mm (max.), H 29 mm From the inventory of an Austrian art dealer, acquired on the European art market.

**50**



**221** A EUROPEAN LATE BRONZE AGE CONICAL SPIRAL Circa 1200-800 BC. Conical bronze spiral; probably a spiral hair ring. Diameter 27 mm (max.), H 46 mm From the inventory of an Austrian art dealer, acquired on the European art market.

**70**



**222** A EUROPEAN LATE BRONZE AGE SPIRAL RING Circa 1200-800 BC. Bronze spiral ring with a single spiral terminal. Probably a finger ring or a hair ring. Attractive green patina. Diameter 24 mm, Height 42 mm (total) From the inventory of an Austrian art dealer, acquired on the European art market.

**80**



**223** A EUROPEAN LATE BRONZE AGE SPIRAL Circa 1200-800 BC. Small bronze spiral; probably a spiral hair ring. Diameter 26 mm (max.), H 24 mm From the inventory of an Austrian art dealer, acquired on the European art market.

**50**



**224** A SMALL EUROPEAN LATE BRONZE AGE SPIRAL RING Circa 1200-800 BC. Bronze spiral ring with a single spiral terminal. Probably a hair ring. Diameter 20 mm, Height 32 mm (total) From the inventory of an Austrian art dealer, acquired on the European art market.

**70**



**225** A EUROPEAN LATE BRONZE AGE SOCKETED ARROWHEAD Circa 1200-800 BC. Small winged bronze arrowhead with socket. Minor casting flaw. L 41 mm From the inventory of an Austrian art dealer, acquired on the European art market.

**30**



**226** A EUROPEAN LATE BRONZE AGE SOCKETED ARROWHEAD Circa 1200-800 BC. Small winged bronze arrowhead with socket. L 36 mm From the inventory of an Austrian art dealer, acquired on the European art market.

**30**



**227** A EUROPEAN LATE BRONZE AGE SOCKETED ARROWHEAD Circa 1200-800 BC. Small winged bronze arrowhead with socket. Somewhat bent and tip curled back by impact (!). L 35 mm From the inventory of an Austrian art dealer, acquired on the European art market.

**30**



**228** A EUROPEAN LATE BRONZE AGE SOCKETED ARROWHEAD Circa 1200-800 BC. Small winged bronze arrowhead with long socket and spur. L 41 mm From the inventory of an Austrian art dealer, acquired on the European art market.

**30**



**229** TWO EUROPEAN LATE BRONZE AGE SOCKETED ARROWHEADS Circa 1200-800 BC. Two small winged bronze arrowheads with socket. L 31 mm, and L 22 mm From the inventory of an Austrian art dealer, acquired on the European art market.

**35**



**230** TWO EUROPEAN LATE BRONZE AGE SPIRAL RINGS Circa 1200-800 BC. A bronze spiral ring with a single spiral terminal, and a small bronze spiral. Both probably hair rings. Diameter 21 mm (max.), Height 40 mm (total); and Diameter 18 mm From the inventory of an Austrian art dealer, acquired on the European art market.

**50**



**231** A EUROPEAN EARLY IRON AGE SPECTACLE BROOCH Circa 800-600 BC, Hallstatt Period (Ha C). Bronze spectacle brooch made from a single length of round wire formed into two tightly wound coils. Separately attached pin on back not preserved. L 10.7 cm Austrian private collection. Acquired on the Austrian art market.

**200**



**232** A LARGE CELTIC LA TENE PERIOD BRONZE RING Circa 4th-3rd century BC. Large profiled bronze ring with a wonderful green patina. Edges somewhat chipped. Diameter 32 mm From the inventory of an Austrian art dealer, acquired on the European art market.

**50**



**233** A CELTIC BRONZE KNOBBED RING ('NOPPENRING') Circa 3rd-2nd century BC. Solid ring with four large knobs. Diameter 38 mm Ex European private collection, acquired on the German art market in the late 1990s.

**50**



**234** A GROUP OF THREE CELTIC BRONZE RINGS Circa 3rd-1st century BC. Two large Celtic knobbed rings, and a small Celtic/Thracian ring with two rows of 'spikes'. The former somewhat worn and damaged. Diameter 59 mm and 55 mm; and Diameter 28 mm Ex European private collection, acquired on the German art market before 2000.

**80**



**235** A LATE HALLSTATT PERIOD BRONZE BELT PLATE Circa 650-550 BC (Ha D). A rare, elaborately decorated belt plate made of bronze sheet. The plate is decorated with an intricate punched geometric design. Pierced for attachment to leather or fabric. With some minor cracks and damage to the edges. For a comparison see I. Kilian-Dirlmeier, *Die hallstattzeitlichen Gürtelbleche und Blechgürtel Mitteleuropas*, PBF Abt. XII, Bd. 1 (Munich 1972), Type 1, p. 98 et seqq. L 35 cm (total), 20 cm (diagonal), H 8.2 cm Austrian private collection. Ex Auktionshaus im Kinsky, Auction 109 (25.11.2015), Lot 661. Before, German art market, and private collection, Vienna.

**700**



**236** AN URNFIELD CULTURE CERAMIC BOWL Circa 1300-800 BC. Bowl with flat base and two pierced lug handles. An incised line along the shoulder. Minor damage to the rim and the surface. H 7 cm, Diameter 12 cm Ex Austrian private collection, acquired in the 1980s-90s.

**100**



**237** AN URNFIELD CULTURE CERAMIC BOWL Circa 1300-800 BC. Decorated bowl with flat base. A few cracks and minor restoration to the rim. H 7.5 cm, Diameter 12 cm Ex Austrian private collection, acquired in the 1980s-90s.

**100**



**238** AN ATTIC BLACK FIGURE FLORAL BAND CUP (KYLIX) Circa 500-450 BC. Shallow bowl with two looped handles, decorated with a lotus and palmette band; a reserved band below. The tondo with circle and dot. Set on a short stem with flared base. Broken and repaired, with some restoration (one handle, and two smaller parts of the bowl). Diameter 16.8 cm (without handles), H 6.6 cm Austrian private collection. Ex Auktionshaus im Kinsky, Auction 124 (24.10.2018), Lot 809. Before, collection of Generalarzt Dr. Josef Mayer-Riefenthaler, acquired between 1964 and 1969.

**450**



**239** A WESTERN GREEK TERRACOTTA KANTHAROS Circa 4th-3rd century BC. With an offset base and two high arched handles. Remains of an orange-red slip on the outside and two decorative red bands on the inside of the shoulder. Some earthen deposits and very minor damage to the surface. H 12.5 cm, Diameter 8.7 cm (rim without handles) Austrian private collection. From the estate of the late Victor Hruby, Vienna.

**200**



**240** A GROUP OF THREE WESTERN GREEK BLACK-GLAZED VESSELS Circa 4th-early 3rd century BC. A black-glazed plate, a cup with one looped handle, and a further cup. All with ring base. Probably Campanian. Minor deposits and a few worn areas. Diameter 8.5-16.2 cm, H 3-7-4.8 cm Austrian private collection. From the estate of the late Victor Hruby, Vienna.

**280**



**241** A DECORATED ROMAN RED SLIP WARE JUG Circa 3rd century AD. African Red Slip Ware (ARS) jug with globular body, cylindrical neck with flaring mouth, and strap handle; set on a low ring foot. The body with incised lines and rouletted decoration. Minor calcareous deposits. H 13.8 cm Ex Austrian private collection, acquired in the 1980s-90s.

**150**



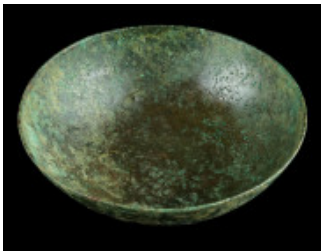
**242** A DECORATED ROMAN RED SLIP WARE JUG Circa 3rd century AD. African Red Slip Ware (ARS) jug with globular body, cylindrical neck with flaring mouth, and strap handle; set on a low foot. The body with incised lines and rouletted decoration. Minor earthen deposits. Surface somewhat worn and scratched; handle reattached. H 12.2 cm Ex Austrian private collection, acquired in the 1980s-90s.

**100**



**243** A DECORATED ROMAN RED SLIP WARE JUG Circa 3rd century AD. African Red Slip Ware (ARS) jug with globular body, cylindrical neck with flaring mouth, and strap handle; set on a low foot. The body with incised lines and rouletted decoration. H 12 cm Ex Austrian private collection, acquired in the 1980s-90s.

**100**



**244** A GREEK BRONZE BOWL Circa 4th-3rd century BC. Plain bronze bowl. Surface deposits. Surface treated with a layer of protective acrylic resin (Paraloid). Diameter 16.2 cm, H 5 cm Austrian private collection. From the estate of the late Victor Hruby, Vienna.

**150**



**245** A GREEK BRONZE PHIALE WITH AN OMPHALOS Circa 5th-4th century BC. Cast bronze phiale (libation bowl) with a hollow, rounded, raised boss in the centre (omphalos). Heavy surface deposits and some corrosion. Surface treated with a layer of protective acrylic resin (Paraloid). Diameter 15.8 cm, H 4.3 cm Austrian private collection. From the estate of the late Victor Hruby, Vienna.

**300**



**246** A LARGE ROMAN BRONZE DICE Circa 1st-3rd century AD. An unusually large Roman gambling/gaming dice. L 24 mm (edges) Ex Austrian private collection, acquired in the 1980s-90s.

**80**





**247** TWO VENETIAN LEAD THERIAC CAPSULE SEALS Circa 17th century AD. Two lids from Theriac boxes. One from the Due Mori pharmacy, depicting confronted busts of two moors surrounded by the legend THERIACA FINA ALI DVE MORI VEN; the other from the Struzzo d'Oro pharmacy, depicting an ostrich standing left with a small serpent in the beak and the lion of St. Markus in the left field, surrounded by the legend THERIACA FINA AL STRUZZO DORO V. Diameter 23 mm, and diameter 26 mm Ex European private collection, acquired on the German art market in the late 1990s.

**50**



**248** AN ANTIQUE GLOBULAR BRASS OR BRONZE FLASK 17th-19th century AD (?). Some damage and a few cracks. H 71 mm Ex European private collection, acquired on the German art market in the late 1990s.

**80**



**249** A SILVER-GILT STRAP DECORATION AND A SPADE-SHAPED PENDANT Circa 14th-16th century AD, and 1st-3rd century AD. A medieval or early modern strap decoration, and a probably Roman spade-shaped pendant. H 20 mm, and H 29 mm Ex Austrian private collection, acquired in the 1980s-90s.

**30**



**250** TWO ROMAN BRONZE BROOCHES Circa 2nd-3rd century AD. A knee brooch, and a strongly profiled brooch. Both with spring and pin. Spring of the knee brooch damaged and repaired in antiquity. Wonderful green patina. L 45 mm each Ex Austrian private collection, acquired in the 1980s-90s.

**40**



**251** A GROUP OF THREE ROMAN BRONZE BROOCHES Circa 2nd-3rd century AD. Two bow brooches, and a knee brooch. All with hinged pin. L 26-42 mm Ex European private collection, acquired on the German art market in the late 1990s.

**50**



**252** A GROUP OF THREE ROMAN BRONZE BROOCHES Circa 2nd-3rd century AD. Two strongly profiled brooches with spring and pin, and a knee brooch with hinged pin. L 44-58 mm Ex Austrian private collection, acquired in the 1980s-90s.

**45**



**253** TWO ROMAN BRONZE BROOCHES Circa 2nd-3rd century AD. An early crossbow brooch, and a wolf head bow brooch. Both with hinged pin. L 64 mm, and L 66 mm Ex European private collection, acquired on the German art market in the late 1990s.

**50**



**254** A GROUP OF THREE ANCIENT BRONZE BROOCHES Circa 1st century BC - early 2nd century AD. A late Iron Age/La Tène brooch with open catch plate, and two early Roman bow brooches. All with spring and pin. L 36-49 mm Ex European private collection, acquired on the German art market in the late 1990s.

**50**



**255** TWO ROMAN BRONZE WOLF HEAD BROOCHES Circa late 1st-2nd century AD. Two bow brooches decorated with a stylised wolf's head and a punched design. Both hinged, pins probably reattached; catch plate of the larger brooch cracked/slightly bent. L 64 mm, and L 74 mm Ex European private collection, acquired on the German art market in the late 1990s.

**50**



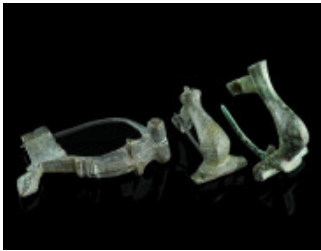
**256** TWO ROMAN BRONZE BROOCHES Circa 2nd-3rd century AD. Two strongly profiled brooches. Both with spring and pin. Catch plate of one brooch partly broken. Nice green patina. L 42 mm each Ex Austrian private collection, acquired in the 1980s-90s.

**40**



**257** A GROUP OF FOUR ROMAN BRONZE BROOCHES Circa 1st-2nd century AD. Two strongly profiled brooches, and two bow brooches. All with spring and pin. L 29-51 mm Ex European private collection, acquired on the German art market in the late 1990s.

**50**



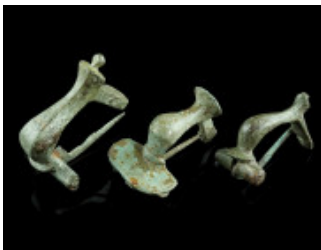
**258** A GROUP OF THREE ROMAN BRONZE BROOCHES Circa 2nd-3rd century AD. Two knee brooches, and a bow brooch. All with hinged pin. Two pins probably restored. L 26-42 mm Ex European private collection, acquired on the German art market in the late 1990s.

**50**



**259** A GROUP OF THREE ROMAN BRONZE BROOCHES Circa 2nd-3rd century AD. Two bow brooches, and a double knee brooch with notched decoration. All hinged, pins restored. L 31-47 mm Ex European private collection, acquired on the German art market in the late 1990s.

**50**



**260** A GROUP OF THREE ROMAN BRONZE KNEE BROOCHES Circa 2nd-3rd century AD. Two brooches with faceted bow, transverse catch plate and hinged pin. And a brooch with large semicircular head plate and spring and pin; spring broken but complete. L 33-39 mm Ex Austrian private collection, acquired in the 1980s-90s.

**45**



**261** A GROUP OF THREE ROMAN BRONZE BROOCHES Circa 1st-3rd century AD. Two strongly profiled brooches with spring and pin, and a brooch with divided bow and hinged pin. L 30-52 mm  
Ex European private collection, acquired on the German art market in the late 1990s.

**50**



**262** A GROUP OF THREE ROMAN BRONZE BROOCHES Circa 2nd-3rd century AD. A strongly profiled brooch with spring and pin, an ornate knee brooch with hinged pin, and an early crossbow brooch with notched decoration and hinged pin. L 27-51 mm  
Ex Austrian private collection, acquired in the 1980s-90s.

**45**



**263** A GROUP OF FOUR ROMAN BRONZE BROOCHES Circa 1st-3rd century AD. Two strongly profiled brooches with spring and pin, and two knee brooches with hinged pin. L 31-49 mm  
Ex Austrian private collection, acquired in the 1980s-90s.

**50**



**264** A GROUP OF THREE EARLY ROMAN BRONZE BROOCHES Circa 1st century AD. A small, tinned bow brooch with niello decoration and hinged pin; and two small hinged plate brooches, one with tinning, pins not preserved. Length/Diameter 25-33 mm  
Ex European private collection, acquired on the German art market in the late 1990s.

**40**



**265** A GROUP OF THREE ROMAN BRONZE BROOCHES Circa 1st-3rd century AD. Two strongly profiled brooches with spring and pin, and a knee brooch with hinged pin. All slightly bent. L 43-51 mm  
Ex Austrian private collection, acquired in the 1980s-90s.

**45**



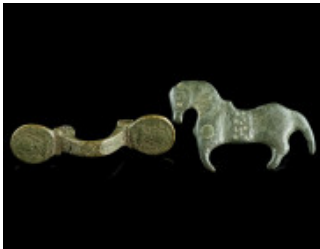
**266** A GROUP OF THREE ROMAN BRONZE BROOCHES Circa 2nd-3rd century AD. A bow brooch with an anchor-shaped head, a further bow brooch, and a small knee brooch. All with hinged pin. L 23-38 mm Ex European private collection, acquired on the German art market in the late 1990s.

**50**



**267** A GROUP OF FOUR ROMAN BRONZE BROOCHES Circa 2nd-4th century AD. A strongly profiled brooch with spring and partly preserved pin, a bow brooch with spring, a further hinged bow brooch, and a late Roman crossbow brooch. Pins of the latter three brooches not preserved. L 57-68 mm Ex European private collection, acquired on the German art market in the late 1990s.

**40**



**268** AN EARLY BYZANTINE BROOCH AND A HORSE APPLIQUE Circa 6th-7th century AD. An equal-ended brooch decorated with nimbate busts, spring and pin missing; and an applique in the shape of a horse, a stud and remains of two lugs on the reverse. L 44 mm, and L 40 mm Ex European private collection, acquired on the German art market in the late 1990s.

**50**



**269** A GROUP OF THREE BRONZE BROOCHES WITH BENT FOOT Circa 4th-5th century AD. Bow brooches with folded foot (umgeschlagenem Fuß); all with punched decoration. Springs and pins made of iron missing. L 42-64 mm Ex European private collection, acquired on the German art market in the late 1990s.

**40**



**270** A GROUP OF FOUR BYZANTINE BRONZE BROOCHES WITH BENT FOOT Circa 6th-7th century AD. Cast bow brooches with folded foot (umgeschlagenem Fuß), mostly with incised (or punched) decoration. Iron springs partly missing, all without pin. L 41-54 mm Ex European private collection, acquired on the German art market in the late 1990s.

**40**



**271** A GROUP OF FOUR BYZANTINE BRONZE BROOCHES WITH BENT FOOT Circa 5th-7th century AD. Bow brooches with folded foot (umgeschlagenem Fuß), with incised (or punched) decoration. Iron springs mostly missing, all without pin. L 42-83 mm Ex European private collection, acquired on the German art market in the late 1990s.

**40**



**272** A GROUP OF FOUR ROMAN BRONZE WOLF HEAD BROOCHES Circa late 1st-2nd century AD. Four bow brooches decorated with a stylised wolf's head. All hinged, pins missing. L 61-84 mm Ex European private collection, acquired on the German art market in the late 1990s.

**50**



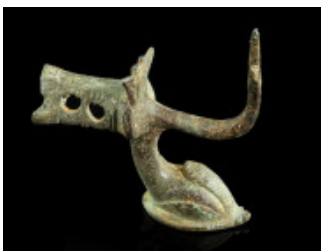
**273** A PAIR OF GREEK SILVER OMEGA EARRINGS Circa late 6th-5th century BC. Matching pair of earrings, taking their name from a similarity to the Greek letter omega. The plain metal rod expands into an open hoop; the ends are turned upwards and terminate in pyramidal knobs with incised decoration. H 29 and 31 mm Ex Austrian private collection O. H., acquired between 1990-2010.

**60**



**274** A ROMAN BRONZE APPLIQUE WITH MEDUSA Circa 2nd-3rd century AD. Fragmentary round applique with a head of Medusa. Surface treated with a thin layer of protective acrylic resin (Paraloid). Diameter 7.8 cm Austrian private collection. Acquired on the Austrian art market.

**80**



**275** A ROMAN BRONZE FOOT IN THE SHAPE OF A DOLPHIN Circa 2nd-3rd century AD. Foot in the shape of a stylised dolphin with a thorn/hook and remains of an openwork bar. The patina with some iron deposits. H 60 mm, L 57 mm Austrian private collection. Acquired on the Viennese art market.

**50**



**276** TWO SMALL ROMAN BRONZE LOWER ARMS Circa 2nd-3rd century AD. Two right arms. One holding a thunderbolt in the hand, from a statuette of Jupiter; the other once holding an implement or attribute in the hand, a stud for attachment at the end of the arm. L 37 mm each Ex European private collection, acquired on the German art market in the late 1990s.