

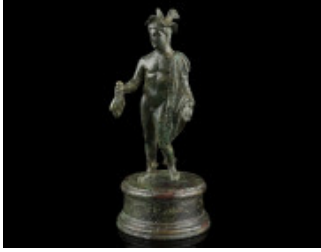


# Numisart

## **Auction 10**

11 May 2025

All prices are starting prices (EUR)  
PDF catalog created by [www.biddr.com](http://www.biddr.com)



**1** A Fine Roman Bronze Statuette of Mercury Circa 1st-2nd century AD. The messenger god is standing in contrapposto, with the weight on his right foot. He is shown nude but for his winged cap (petasos) and a cloak over his left shoulder and arm. In his right hand he holds a money bag (marsupium), the left hand once held a separately attached herald's staff (caduceus). Reattached to its profiled round base. An excellent representation of this popular god of shopkeepers and merchants, travellers and transporters of goods, and thieves and tricksters. H 13.3 cm (total), 10.4 cm (statuette) Ex private European collection; acquired in Germany before 2000.

**1'800**



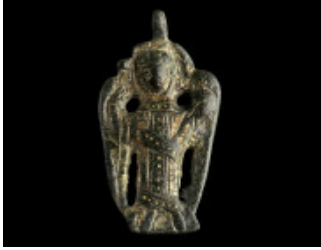
**2** A Cypriot Limestone Male Head with Helmet Archaic Period, circa 6th century BC. Head of a beardless male with almond-shaped eyes and long hair, wearing a conical helmet. The features are simple and stylised, typical for the Archaic Period. Probably from a statue. Somewhat worn and damaged. Mounted on a wooden base. H 13.5 cm (head without base) From the estate of Ms. Johanna Raffler, Graz, acquired between 1980-2015. Purchased from James Murphy Coins & Antiquities; with an old printed label.

**300**



**3** A Fine European Late Bronze Age/Early Iron Age Bracelet Circa 8th-7th century BC. Heavy bronze bracelet with a central ridge, the terminals decorated with parallel notches. Beautiful green patina with some earthen deposits. Diameter 73 mm (max.) Ex European private collection, acquired on the German art market before 2000.

**300**



**4** A Byzantine Gilt Bronze Pendant with an Archangel Circa 11th-13th century AD. Openwork pendant in the shape of a facing angel in relief, with long wings and an elaborate robe decorated with a punched design. He is holding a sceptre in his right hand and a globe cruciger in his left. H 47 mm Ex private European collection, acquired on the German art market between 1998 and 2005.

**380**



**5** A European Late Bronze Age Spiral Ring Circa 1200-800 BC. Ring with two spiral terminals, formed from a single stretch of bronze rod. Attractive green patina. L 51 mm, Diameter 23 mm (hoop) Acquired on the UK art market before 2021. Ex old European private collection.

**180**



**6** A Roman Bronze Gladiator Brooch of a Thraex Circa 2nd-3rd century AD. The brooch features a Thraex (Thracian) standing front, wearing a plumed helmet and greaves. He is holding a rectangular shield and short sword with curved blade (sica). An interesting gladiatorial piece. Hinged, iron pin not preserved. Some earthen deposits. H 49 mm Ex Austrian private collection, acquired in the 1980s-90s.

**550**



**7** A Small Roman Silver Statuette of a Genius Circa 1st-2nd century AD. Fine silver figure of a Roman genius (a 'spirit' and protective god) wearing his toga capite velato and holding a patera in his right hand. Very well rendered for the size; traces of gilding, some minor deposits. Left hand and right foot broken. H 27 mm Ex European private collection, acquired on the German art market before 2000.

**180**



**8** A Roman Bronze Brooch of a Bear Circa 2nd-3rd century AD. Brooch depicting a striding bear in relief. With hinged pin. Catch plate and pin somewhat bent; small part of catch plate missing. L 34 mm Ex Austrian private collection, acquired in the 1980s-90s.

**150**



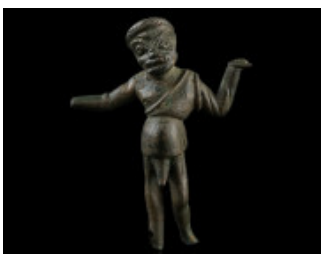
**9** A Medieval Bronze Stamp Seal with a Heraldic Eagle Circa 10th-12th century AD. Circular seal matrix with short, profiled handle. The matrix features a facing eagle, head right, with half open wings. Diameter 24 mm, H 22 mm Ex private European collection, acquired on the German art market between 1998 and 2005.

**150**



**10** A Large Migration Period Bronze Brooch Circa 5th-6th century AD. Bow brooch with semicircular head plate with three knobs and lozenge-shaped foot. Head plate and foot are richly decorated with chip carved ornament. Two lugs for the axis bar of the spring and a catch plate on the reverse; spring and pin were probably made of iron and are not preserved. Foot somewhat bent, with a crack. L 10.5 cm Ex European private collection, acquired between 1990 and 2005.

**100**



**11** A Rare Greek Bronze Figure of a Comic Actor Circa 4th-3rd century BC. Comic Actor in the Role of a Kitchen Slave, with the arms raised to carry platters. He wears a typical grotesque mask and a short cloak revealing an exaggerated phallus. The cloak is padded to indicate a large belly. One hand and both feet broken. H 86 mm Ex private European collection; acquired in Germany before 2000.

**2'500**



**12** A Romano-Celtic Silver Ring with an Axe Pendant Circa 1st century AD. The ring with overlapping ends secured with two spiral twists; the axe pendant with an incised linear decoration. Diameter 44 mm (ring) Ex European private collection, acquired between 1990 and 2005.

**50**



**13** A Roman Bronze Statuette of a Bear Circa 2nd-3rd century AD. Statuette of a bear with a collar around its neck. The fur indicated by short, incised lines. Set on a low plinth of irregular shape. L 57 mm, H 27 mm Ex Austrian private collection, acquired in the 1980s-90s.

**180**



**14** Four Fragments of a Roman Bronze Military Diploma Issued AD 113. The present four fragments (and a very small, illegible fragment) are further evidence for a constitution issued by Trajan in AD 113 for the troops in Pannonia Superior. The diploma was issued under the provincial governor Lucius Minicius Natalis to an unknown auxiliary soldier following twenty-five years of service, awarding to him Roman citizenship. The text of the fragments of tabella II reads as follows, starting with the inner side: [HONESTA MI]SSIONE QVO[RVM NOMI] [NA SVBSCRIP]TA SVNT IP[SIS LIBERIS POS] [TERISQVE] EORVM CIVIT[ATEM DEDIT] [ET CONV]BIVM CVM VX[ORIBVS QVAS] [TVNC HAB]VISSENT CVM E[ST CIVITAS] [IIS DATA A]VT SI QVI [CAELIBES ESSENT][CVM IIS] QVAS [P]OSTEA [DVXISSENT] [DVMTAXAT SING]VLI SI[NGVLAS]. The outer side features the names of witnesses: [..TR]OPHIM[I] [..T]HALL[I] [..] PARATI. To be published in ZPE. Dimensions of the two larger main fragments: H 67 mm, L 63 mm (together); two smaller fragments: H 28 mm, L 44 mm (together) From the collection of an Austrian Art dealer. Acquired on the European Art Market from 1995 to present.

**250**



**15** A Pair of Elaborate Roman Gold Earrings Circa 2nd-3rd century AD. Heavy gold earrings formed of two disks each, lavishly decorated with filigree and granulation work; with hook-and-loop fastener. Disks of one earring slightly smaller than the other. A few earthen deposits. H 26 mm (each); Gold! 15.15 g Ex European private collection, acquired between 1990 and 2005.

**1'500**



**16** A Handle of a Large Roman Bronze Casserole with Maker's Mark Circa 1st century AD. Terminal of a handle with ring loop, the top decorated with ornamental bands. With a stamped maker's mark. Some deposits. L 94 mm, W 60 mm Acquired on the UK art market before 2021. Ex old European private collection.

**50**



**17** A Roman Bronze Base with Inscription Circa 1st-3rd century AD. Rectangular, moulded base of a statuette inscribed MEIC ΓΑΛΑΤΙΚΟC. The term 'Galatikos' is used to describe something or someone that is of or pertaining to Galatia, a region in central Asia Minor. L 39 mm, W 33 mm, H 19 mm Acquired on the UK art market before 2021. Ex old European private collection.

**180**



**18** A Roman Bronze Hare and Hound Brooch Circa 2nd-3rd century AD. Well modelled openwork plate brooch featuring in high relief a hound hunting a hare. With hinged pin. L 38 mm Ex Austrian private collection, acquired in the 1980s-90s.

**80**



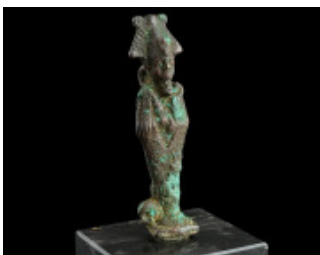
**19** An Early Byzantine Ligula with a Chain with Cross Plaque Circa 6th-7th century AD. Pin-like medical instrument or cosmetic spoon with a small scoop at one end (ligula), unusually furnished with a chain with cross plaque and triangular hook for attachment/suspension. For a comparison see: L. Wamser and G. Zahlhaas, *Rom und Byzanz. Archäologische Kostbarkeiten aus Bayern* (Munich 1998), cat. no. 249 (only the chain) with further references. L 11.9 cm (ligula), and 13 cm (chain) From the inventory of an Austrian art dealer. Ex European private collection, acquired on the German art market before 2000.

**140**



**20** A Byzantine Lead Alloy/Pewter Plaque with Three Saints Circa 12th-14th century AD. The obverse of the square plaque features three nimbate saints standing facing. In the centre, a bearded and bald saint wearing a long robe decorated with crosses, raising his right hand in benediction and holding Gospels in the left. He is flanked by a military saint on either side, both in military attire, with spear and sword. Above their heads a probably blundered, abbreviated inscription. The reverse features centrally a large cross framed by scrollwork and abbreviated inscriptions. Somewhat bent and cracked. Initially probably with a loop for suspension or attachment at the top but later pierced. L 56 x 56 mm Ex European private collection, acquired between 1990 and 2005.

**150**



**21** An Egyptian Bronze Statuette of Osiris Late Period, circa 664-30 BC. Bronze statuette of the god Osiris in mummiform, wearing the atef crown. Above the forehead, an uraeus snake. In his hands crook and flail. Set on a low, trapezoid plinth with tenon. Two suspension loops. Green and red deposits. Loosely mounted on a modern stone base. H 97 mm (with tenon) Ex collection H. S., Germany, died 2015.

**250**



**22** Two Medieval/Early Modern Gilt Bronze Appliques Circa 14th-16th century AD. Two circular appliques with a male head facing front, and a female head/bust in three-quarter profile. Three holes for attachment each. Diameter 23-24 mm Acquired on the UK art market before 2021. Ex old European private collection.

**140**



**23** A Migration Period Silver Gilt Brooch with two Garnets Circa 5th-6th century AD. Bow brooch with rectangular head plate and lozenge-shaped foot. Head plate and foot are richly decorated with chip carved ornament. The foot is further embellished with two garnets and terminates in a stylised animal head. Foot cracked and broken; some hornsilver deposits. L 79 mm Ex private European collection; acquired in Germany before 2000.

**300**



**24** A European Late Bronze Age Decorated Chisel Circa 1000-800 BC. Bronze chisel with narrow blade; the shaft richly decorated with incised lines on one side. Beautiful green patina. L 93 mm Acquired on the UK art market before 2021. Ex old European private collection.

**80**



**25** A Roman Gold Faceted Ring Circa 3rd-4th century AD. Small gold ring with multi-sided faceted hoop. Ring size 47 (EU); Gold! 2.14 g Ex Austrian private collection, acquired in the 1980s-90s.

**220**



**26** A European Late Bronze Age Socketed Axe Head Circa 1000-800 BC. Socketed and looped bronze axe head with triple-banded collar and ribbed decoration. L 11.4 cm Acquired on the UK art market before 2021. Ex old European private collection.

**180**





**27** A Western Greek Black Glazed Stemless Kylix Circa 4th-early 3rd century BC. South Italian terracotta cup with ring base, rounded body, and horizontal twin handles. Intact with only a minor chip to the edge. L 16 cm (with handles), H 4 cm, Diameter 10.5 cm From the estate of Ms. Johanna Raffler, Graz, acquired between 1980-2015. Purchased from James Murphy Coins & Antiquities.

**100**



**28** An Attic Black Glazed Stemmed Kylix Circa 5th century BC. Greek terracotta cup with two looped handles, set on a short stem with flared base. A few minor cracks and foot with repaired breaks; otherwise intact. Old collection number '14' at bottom of base. L 20.8 cm (with handles), H 7.8 cm, Diameter 15 cm From the estate of Ms. Johanna Raffler, Graz, acquired between 1980-2015.

**150**



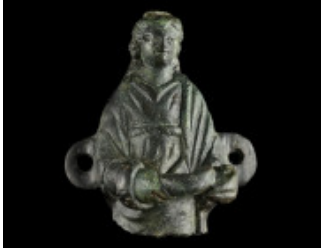
**29** A Large European Late Bronze Age Twisted Torque Circa 1000-800 BC. Twisted hoop of solid bronze, the plain tapering ends with flattened coiled terminals. Diameter 23 cm Acquired on the UK art market before 2021. Ex old European private collection.

**180**



**30** A Gandhara Stucco Head of Buddha Circa 4th-5th century AD. With a rounded face and wavy hair gathered in a topknot. Broken at the side and back; earthen deposits. Mounted on a wooden base. H 73 mm (head without base) From the estate of Ms. Johanna Raffler, Graz, acquired between 1980-2015. Purchased from James Murphy Coins & Antiquities; with an old printed label.

**100**



**31** A Roman Bronze Applique of Salus Circa 1st-3rd century AD. The goddess with long hair is depicted standing, wearing a girded tunic and a mantle, and feeding a snake coiled around her right arm from a patera in her left hand. A lug for attachment on either side; broken below the waist. H 49 mm Ex European private collection, acquired on the German art market before 2000.

**120**



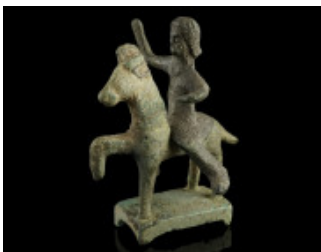
**32** A Small Roman Silver Votive Figure of Jupiter Circa 1st-2nd century AD. Jupiter, the supreme god of the Roman pantheon, is depicted nude but for a mantle, with long beard and curly hair. He probably held a thunderbolt or patera in his lowered right hand and a sceptre in his raised left. Back of the figure flat. Hands/left lower arm and feet broken. H 23 mm Ex European private collection, acquired on the German art market before 2000

**80**



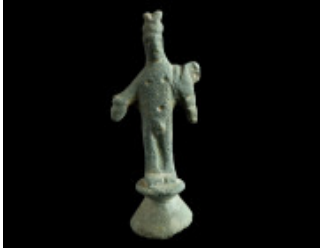
**33** A Roman Silver Applique of a Panther Circa 1st-2nd century AD. Small, finely detailed applique depicting a panther with half-open mouth, showing its teeth and tongue. H 12 mm Ex European private collection, acquired on the German art market before 2000.

**80**



**34** A Roman Bronze Statuette of a Thracian Horse and Rider Circa 2nd-3rd century AD. The hero with long hair is wearing a tunic, his right hand raised and a patera in his extended left. The horse is shown with its right foreleg raised, set on a rectangular base. Earthen deposits. H 59 mm (total) Ex European private collection, acquired between 1990 and 2005.

**140**



**35** A Small Roman Bronze Statuette of Mercury Circa 2nd-3rd century AD. A stylised representation of Mercury on a profiled round base; the god is wearing a winged cap and a cloak over his left shoulder and arm, probably holding the herald's staff (caduceus) in his left hand, and a money bag (marsupium) in his right. Bottom of base slightly damaged; somewhat rough surface. H 45 mm Ex European private collection, acquired between 1990 and 2005.

**50**



**36** Two Roman Bronze Lion Head Appliques Circa 2nd-3rd century AD. Two round appliques in the shape of a lion's head. The smaller piece features remains of tinning; the larger piece heavily worn and damaged. Diameter 32 mm, and 37 mm (max.) Ex European private collection, acquired on the German art market before 2000.

**50**



**37** A Roman Bronze Bull Applique and a Lion Paw Circa 1st-3rd century AD. An applique in the shape of a bull's head, and a lion's paw that formed part of a small furniture leg. H 22 mm, and H 19 mm Ex European private collection, acquired on the German art market before 2000.

**60**



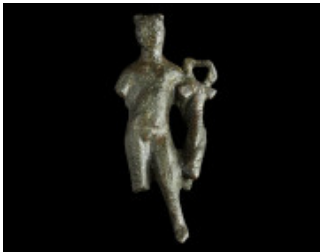
**38** A Roman Bronze Thracian Horse, Rider, and Base Circa 2nd-3rd century AD. A set of horse, rider, and base. Not belonging together; horse and rider partly broken. Height/Length 37-52 mm Ex European private collection, acquired on the German art market before 2000.

**150**



**39** An Etruscan Bronze Statuette of a Striding Woman Circa 5th century BC. Votive bronze figure of an elongated striding woman (kore) wearing a long, close-fitting chiton, her arms bowed out to the side. For the style and type compare a piece in the Harvard Art Museums, acc. no. 1962.64 (<https://hvrd.art/o/311125>). H 10.8 cm Ex European private collection, acquired between 1990 and 2005.

**700**



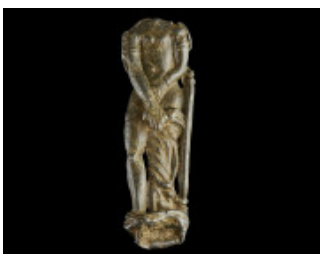
**40** A Roman Bronze Statuette of Mercury Circa 2nd-3rd century AD. The messenger god is shown nude but for his winged cap and a cloak wrapped around his left arm. He is holding the herald's staff (caduceus) in his left hand. The right arm and lower leg are missing. Face worn, and somewhat rough surface. H 61 mm Ex European private collection, acquired on the German art market before 2000.

**70**



**41** Two Scythian Zoomorphic Bronze Appliques Circa 6th-5th century BC. One in the shape of a horse (or griffin), with a strap loop on the reverse; the other fragmented, with stylised animal heads. H 28 mm, and H 25 mm Ex European private collection, acquired on the German art market before 2000.

**60**



**42** A Roman Lead Statuette of Venus Pudica Circa 2nd-3rd century AD. Venus is depicted nude but for a mantle covering her left leg and gathered at her left hip; a staff to her left. Set on a profiled round base that is now bent. Head missing. H 73 mm Ex European private collection, acquired on the German art market before 2000.

**40**



**43** A Roman Bronze Herald's Staff (Caduceus) Circa 2nd-3rd century AD. Short winged staff entwined by two serpents. H 53 mm Ex European private collection, acquired on the German art market before 2000.

**90**



**44** A Roman Bronze Attachment of Jupiter Circa 2nd-3rd century AD. Small bust of the bearded god with curly hair. H 44 mm Ex European private collection, acquired on the German art market before 2000.

**40**



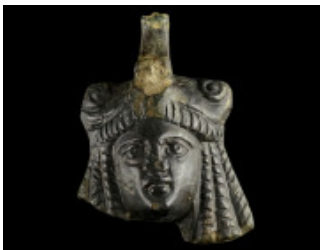
**45** A Roman Bronze Figure of a Dolphin Circa 1st-3rd century AD. Finely modelled figure of a dolphin. A loop for attachment below the tail and remains of lead solder below the beak. L 66 mm Ex European private collection, acquired on the German art market before 2000.

**180**



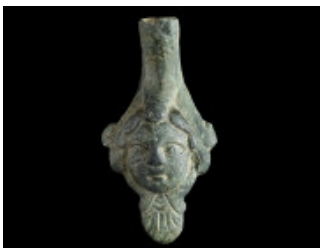
**46** A Roman Bronze Handle Attachment Circa 2nd-3rd century AD. Attachment with a highly stylised head in relief. H 57 mm Ex European private collection, acquired on the German art market before 2000.

**50**



**47** A Roman Bronze Handle Attachment with a Theatre Mask Circa 1st-3rd century AD. Handle attachment (or jug handle) in the form of a tragic theatrical mask. Upper part, and lower part of hair broken. H 47 mm Ex European private collection, acquired on the German art market before 2000.

**90**



**48** A Roman Bronze Jug Handle with a Head of Eros Circa 2nd-3rd century AD. Lower part of a jug handle with a head of Eros in relief; a palmette below. H 41 mm Ex European private collection, acquired between 1990 and 2005.

**40**



**49** Two Roman Bronze Statuettes of a Thracian Horseman Circa 2nd-3rd century AD. One statuette shows the hero with long hair, wearing a tunic and cuirass (?), his right hand raised; lower left arm and right leg missing. The other statuette features the hero with a patera in his left hand; right arm broken. H 55 mm, and H 49 mm Ex private collection, acquired on the German art market before 2000.

**90**



**50** A Roman Bronze Handle with a Bust of Jupiter Circa 2nd-3rd century AD. Lower part of a handle with the draped bust of the bearded supreme god with curly hair. Cleaned and probably lightly tooled. H 58 mm (total), H 30 mm (bust) Ex European private collection, acquired on the German art market before 2000.

**70**



**51** A Late Medieval Bronze Figure of a Lion Circa 14th-15th century AD. Stylised figure of an upright lion; legs and tail partly broken. H 44 mm Ex European private collection, acquired on the German art market before 2000.

**50**



**52** A Roman Bronze Jug Handle with a Female Head Circa 2nd-3rd century AD. Lower part of a Roman jug handle with the depiction of a female head in relief. Cleaned and lightly tooled. H 77 mm Ex European private collection, acquired on the German art market before 2000.

**50**



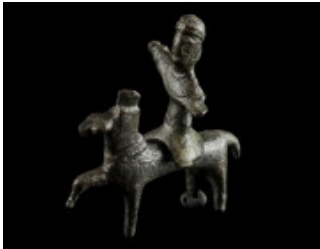
**53** A Roman Bronze Head of a Panther Circa 3rd-4th century AD. Highly stylised head and neck of a panther; broken blow. H 35 mm Ex European private collection, acquired on the German art market before 2000.

**30**



**54** A Roman Bronze Fly/Cicada Fitting Circa 2nd-3rd century AD. The eyes indicated by two deep grooves and the head separated from the body by two further grooves; with a stud for attachment on the reverse. L 29 mm Ex European private collection, acquired on the German art market before 2000.

**30**



**55** A Roman Bronze Thracian Horse and Rider Circa 2nd-3rd century AD. A set of horse and rider; the rider partly broken. Probably not belonging together. L 44 mm (horse); H 33 mm (rider) Ex European private collection, acquired on the German art market before 2000.

**150**



**56** A Roman Bronze Bust Applique of the Moon God Mên Circa 2nd-3rd century AD. Small bust of the draped moon god wearing a long Phrygian cap with its ends falling onto the shoulders. Behind, the pointed ends of the crescent moon are visible. H 37 mm Ex European private collection, acquired on the German art market before 2000.

**70**



**57** A Roman Bronze Leg and an Arm Circa 1st-3rd century AD. A lower left leg set on a plinth; and a well modelled right arm with a tenon for attachment (minor remains of lead solder still visible). Both originally from statuettes. H 37 mm (leg), an L 54 mm (arm) Ex European private collection, acquired on the German art market before 2000.

**60**



**58** Two Small Roman Bronze Busts Appliques Circa 2nd-3rd century AD. A draped and veiled female bust with a strap loop on top; and a draped mal bust with a helmet or cap. H 37 mm, and H 31 mm Ex European private collection, acquired on the German art market before 2000.

**60**





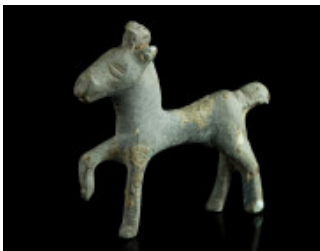
**59** An Early Modern Bronze Fitting with the Head of a Creature Circa 16th-18th century AD. A fitting showing the stylised head of a creature in an ornamental manner; pierced for attachment. H 30 mm Ex European private collection, acquired on the German art market before 2000.

**40**



**60** A Small Roman Silver Relief with Two Genii and a Togate Bust Circa 1st-2nd century AD. Rectangular silver repoussé relief made of thin sheet metal, featuring a togate portrait bust in front of a parapetasma held by two Genii. W 28 mm, H 18 mm Ex European private collection, acquired on the German art market before 2000.

**70**



**61** A Roman Bronze Statuette of a Striding Horse Circa 2nd-3rd century AD. Striding horse with the right foreleg raised. Part of tail broken. L 45 mm, H 51 mm From the estate of Ms. Johanna Raffler, Graz, acquired between 1980-2015.

**80**



**62** A Small Roman Bronze Applique Bust Circa 2nd-3rd century AD. Stylised bust of a male wearing an animal skin or fur. Probably the representation of a satyr. H 28 mm From the inventory of an Austrian art dealer, acquired on the European art market.

**50**



**63** Three Small Roman Figurative Bronze Objects Circa 2nd-3rd century AD. A left leg from a statuette, a handle attachment with a bust of Eros, and a fly/cicada fitting. Partly broken. L/H 21-29 mm From the estate of Ms. Johanna Raffler, Graz, acquired between 1980-2015.

**40**





**64** A Roman Bronze Arm Holding a Patera with Votive Offerings Circa 1st-2nd century AD. Left lower arm from a statuette, holding a patera with a grain ear and fruits in the hand. L 35 mm From the collection of an Austrian Art dealer. Acquired on the European Art Market from 1995 to present.

**50**



**65** A Roman Lead Head of a Soldier with an Attic Helmet Circa 2nd-3rd century AD. Hollow cast head of a soldier wearing a decorated Attic helmet. With a few cracks on one side. H 32 mm From the collection of an Austrian Art dealer. Acquired on the European Art Market from 1995 to present.

**50**



**66** A Roman Marble Relief with Eros Mourning Circa 2nd-3rd century AD. Fragmented Marble relief featuring Eros in a gesture of mourning, leaning on an inverted torch. H 66 mm From the estate of Ms. Johanna Raffler, Graz, acquired between 1980-2015.

**50**



**67** A Roman Terracotta Statuette of Venus Pudica Circa 2nd-3rd century AD. Statuette of Venus, nude but for a mantle falling over her legs, covering her breasts and pubis with her hands. Next to her, a further smaller figure. Lower part broken. H 12.5 cm From the estate of Ms. Johanna Raffler, Graz, acquired between 1980-2015.

**80**



**68** A Roman Marble Limb from a Large Statuette Circa 2nd-3rd century AD. Lower arm or leg from a statuette. Earthen deposits. H/L 89 mm From the estate of Ms. Johanna Raffler, Graz, acquired between 1980-2015.

**50**



**69** An Elaborate Roman Gold Earring Circa 2nd-3rd century AD. Disk-shaped, decorated earring with a central boss and pendant. The centre with remains of blue glass. Hook reattached. H 39 mm (total), Diameter 15 mm (disk); Gold! 3.86 g Ex European private collection, acquired between 1990 and 2005.

**380**



**70** A Roman Gold Ring with a Garnet Circa 2nd century AD. Ring with flared shoulders and an oval bezel set with a red garnet cabochon. Ring size 43 (EU), Length 18 mm (shoulders); Gold! 7.45 g Ex private European collection; acquired in Germany before 2000.

**750**



**71** A Roman Gold Hercules' Club Pendant Circa 2nd-3rd century AD. Hollow-modelled amulet pendant of conical shape. The wooden knobs of the club indicated by teardrop-shaped beaded gold wire; a strap loop for suspension to the top. The lower end set with a glass stone. Somewhat bent. L 25 mm; Gold! 1.00 g Ex private European collection, acquired on the German art market between 1998 and 2005.

**200**



**72** A Roman Jasper Intaglio with Mount Argaeus Circa 2nd century AD. Intaglio with two goddesses facing one another, one with a long staff, the other with both arms raised; Mount Argaeus above and a grazing horse below. Very rare depiction! For an almost identical scene see Christie's, London, Sale 29 Oct 2003, Lot 311, with further references. Edges chipped and broken. L 17 mm, H 13 mm Acquired on the European art market.

**50**



**73** A Roman Bronze Ring with a Carnelian Intaglio Circa 2nd-3rd century AD. Delicate ring with an oval bezel set with a carnelian intaglio depicting a fish. Minor earthen deposits. Ring size 48 (EU), Length of intaglio 9 mm Ex Austrian private collection, acquired in the 1980s-90s.

**70**



**74** A Pair of Roman Gold Earrings Circa 2nd-3rd century AD. Disc-shaped, domed earrings with central setting (stone or glass missing); one with a drop-shaped hollow pendant. Hooks bent, one hook broken off. Some earthen deposits. H 15 mm, and 25 mm (max.), Diameter 10 mm (disk); Gold! 3.96 g Ex European private collection, acquired between 1990 and 2005.

**380**



**75** A Roman Disk-Shaped Gold Earring Circa 2nd century AD. Slightly domed earring decorated with (twisted) gold wire; with central setting (stone or glass missing). Hook bent and almost broken off. Some earthen deposits. H 21 mm, Diameter 12 mm (disk); Gold! 1.35 g Ex European private collection, acquired between 1990 and 2005.

**130**



**76** A Decorated Roman Gold Pendant Circa 2nd-3rd century AD. Pendant with grape-shaped ornament and strap loop for suspension. Probably from an earring. Slightly bent. L 22 mm; Gold! 1.96 g Ex European private collection, acquired between 1990 and 2005.

**190**



**77** A Roman Gold Earring with Pendant Circa 2nd century AD. Domed disk-shaped earring with hollow drop-shaped pendant. Hoop/hook somewhat bent. Some earthen deposits. H 28 mm (max.), Diameter 10 mm (disk); Gold! 1.98 g Ex European private collection, acquired between 1990 and 2005.

**190**



**78** A Roman Gold Ring with a Banded Glass Intaglio Circa 1st century AD. Hollow gold ring with oval bezel set with a multi-colour banded glass intaglio depicting a standing figure of probably Eros (?). Somewhat bent/deformed and repaired. Ring size 53 (EU); Gold! 1.52 g Ex European private collection, acquired on the German art market before 2000.

**200**



**79** A Plain Roman Gold Earring Circa 1st-3rd century AD. Plain earring made of gold wire, with a hook-and-loop fastener. Diameter 18 mm (max.); Gold! 0.59 g Ex European private collection, acquired on the German art market before 2000.

**70**



**80** A Plain Roman Gold Ring Circa 1st-4th century AD. Plain ring made of gold wire. Somewhat bent. Ring size 56 (EU); Gold! 1.09 g Ex European private collection, acquired between 1990 and 2005.

**100**



**81** A Slavic Silver-Gilt Temple Ring Circa 10th-13th century AD. Temple ring with hollow formed body and twisted hoop. The body decorated with filigree and granulation work. Minor damage. H 39 mm, Diameter 34 mm From the estate of Ms. Johanna Raffler, Graz, acquired between 1980-2015.

**80**



**82** A Pair of Large Slavic/Byzantine Silver Temple Rings Circa 10th-14th century AD. The double-conical body hollow formed and mounted on a large hoop; decorated with granulation work and twisted wire. Somewhat damaged and repaired. Diameter 54 mm, and 62 mm Ex European private collection, acquired on the German art market before 2000.

**150**



**83** A Pair of Decorated Slavic Bronze Temple Rings Circa 10th-14th century AD. With hollow formed body and plain hoop. Patina stripped and probably polished. H 37 mm, and H 35 mm; Diameter 37 mm (max.) From the estate of Ms. Johanna Raffler, Graz, acquired between 1980-2015.

**60**



**84** An Elaborately Decorated Early Modern Silver Gilt Button Circa 16th-17th century AD. Hollow formed globular, ribbed button with engraved decoration and separately attached rosette-shaped terminal set with a blue glass stone; a strap loop for attachment. Two halves originally soldered together. L 43 mm (total), Diameter 29 mm Ex private European collection, acquired on the German art market between 1998 and 2005.

**120**



**85** A Byzantine Silver Ring with a Cross Circa 6th-7th century AD. Ring with projecting square bezel decorated with an incised cross and punched ring-and-dot motifs in the corners. Framed by a beaded border. Minor damage to the hoop. Ring size 56 (EU) Ex European private collection, acquired between 1990 and 2005.

**70**



**86** A Medieval Bronze Archer's Ring Circa 14th-15th century AD. Archer's ring with flat-section hoop and triangular extension with incised decoration. Ring size 70 (EU) Ex European private collection, acquired between 1990 and 2005.

**40**



**87** A Late Medieval/Early Modern Bronze Ring Circa 15th-16th century AD. With an oval bezel decorated with an incised ornamental design. Ring size 59 (EU) Ex European private collection, acquired between 1990 and 2005.

**50**



**88** An Ottoman Silver Seal Ring Circa 18th century AD. With decorated shoulders and a projecting octagonal bezel with an incised design. Ring size 58 (EU) Ex European private collection, acquired between 1990 and 2005.

**80**



**89** A Medieval Bronze Ring with a Pentagram Circa 9th-12th century AD. With ribbed shoulders and a projecting square bezel incised with a pentagram. Decorated with punched dots. Some damage to patina. Ring size 56 (EU) Ex European private collection, acquired between 1990 and 2005.

**50**



**90** A Greek Bronze Ring with a Female Figure Circa 4th century BC. Bronze with some remains of toned silvering. The oval bezel engraved with a seated female figure holding a dove with spread wings. Ring size 49 (EU) Ex private European collection, acquired on the German art market between 1998 and 2005.

**100**



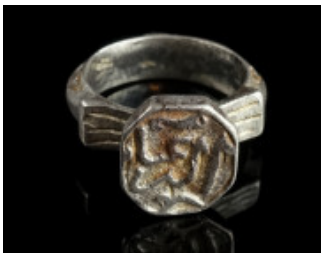
**91** A Late Medieval/Early Modern Silver Ring Circa 15th-16th century AD. With a circular bezel decorated with an incised ornamental design. Ring size 53 (EU) Ex European private collection, acquired between 1990 and 2005.

**70**



**92** A Small Roman Silver Ring with a Portrait Bust of Vespasian (?) Circa 1st century AD. Ring with flared shoulders and separately attached oval bezel with the worn portrait bust of a man in relief. Possibly a depiction of Vespasian. Bezel reattached (glued) but probably belonging. Ring size 44 (EU) Ex private European collection, acquired on the German art market between 1998 and 2005.

**100**



**93** An Islamic Silver Seal Ring Circa 18th century AD. With decorated hoop and a projecting octagonal bezel with inscription. Ring size 54 (EU) Ex European private collection, acquired between 1990 and 2005.

**80**





**94** A Medieval Silver Gilt Ring with Clasped Hands Circa 15th century AD. Ring with the bezel formed of two clasped hands. The hands joined symbolise the love and faith between two people. Fede (the Italian word for 'faith') rings were popular from the 12th century onward. Harshly cleaned with some scratches on the hoop especially; some deposits. Ring size 57 (EU) Acquired on the European art market.

**250**



**95** A Late Roman/Early Byzantine Inscribed Bronze Ring Circa 4th-6th century AD. Ring with angled, faceted shoulders and offset, round bezel inscribed MAPEINOY in three lines, followed by a branch. The name Marinos is in the genitive case, meaning 'the ring/seal of Marinos'. Patina stripped. Ring size 59 (EU), Length 29 mm (shoulders) From the collection of an Austrian Art dealer. Acquired on the European Art Market from 1995 to present.

**90**



**96** An Early Modern Bronze Seal Ring Circa 18th century AD. Ring with offset oval bezel inscribed with the initials M G and featuring various implements and symbols. Hoop somewhat bent. Ring size 62 (EU) From the estate of Ms. Johanna Raffler, Graz, acquired between 1980-2015.

**40**



**97** A Roman Enamelled Bronze Ring and a Plain Bronze Ring Circa 2nd century, and possibly 1st-4th century AD. A Roman bronze ring with an offset oval bezel decorated with enamel; and a plain, possibly Roman ring. Ring size 46, and 66 (EU) Ex Austrian private collection, acquired in the 1980s-90s.

**30**



**98** Two Late Medieval/Early Modern Bronze Rings Circa 15th-16th century AD. Both with an offset bezel decorated with an ornamental design. Ring size 57, and 59 (EU) Ex European private collection, acquired on the German art market before 2000.

**70**



**99** Three Late Antique/Early Byzantine Bronze Rings Circa 4th-6th century AD. Rings with projecting circular bezel with an engraved ornamental or stylised figural design. Ring size 40-58 (EU) Ex European private collection, acquired on the German art market before 2000.

**50**



**100** A Roman and Two Medieval/Early Modern Bronze Rings Circa 2nd century, and 15th-16th century AD. A Roman ring with a silver-plated bezel, and two Medieval/Early Modern rings with incised decoration. Ring size 41-57 (EU) Ex European private collection, acquired on the German art market before 2000.

**50**



**101** Two Medieval/Early Modern Bronze Rings Circa 14th-16th century AD. Both with an offset bezel decorated with an ornamental design. Ring size 47, and 62 (EU) Ex European private collection, acquired on the German art market before 2000.

**50**



**102** Two Medieval/Early Modern Bronze Rings Circa 14th-17th century AD. Both with an offset bezel decorated with an ornamental design. Ring size 54, and 55 (EU) Ex European private collection, acquired on the German art market before 2000.

**70**



**103** Three Medieval/Early Modern Bronze Rings Circa 14th-17th century AD. Three rings of different shape and design with incised decoration. Ring size 58-63 (EU) Ex European private collection, acquired on the German art market before 2000.

**50**





**104** Two Medieval/Early Modern Bronze Rings Circa 14th-17th century AD. Both with an offset bezel decorated with an ornamental design. Ring size 55 (EU) each Ex European private collection, acquired on the German art market before 2000.

**70**



**105** Two Medieval/Early Modern Bronze Rings Circa 14th-17th century AD. Both with an offset bezel decorated with an ornamental or stylised figurative design. Ring size 53, and 61 (EU) Ex European private collection, acquired on the German art market before 2000.

**70**



**106** An Inscribed Byzantine and Two Medieval/Early Modern Rings Circa 10th-12th century, and 15th-16th century AD. An elaborately decorated Byzantine bronze ring with remains of enamel; the offset circular bezel with an inscription that reads +K(YPI)E BOHΘH, probably followed by the name of the owner ('Lord, help ...'). And two Medieval/Early Modern rings with incised decoration. Ring size 54-58 (EU) Ex European private collection, acquired on the German art market before 2000.

**50**



**107** Two Medieval/Early Modern Bronze Rings Circa 14th-17th century AD. Both with an offset bezel decorated with an ornamental design. Ring size 52, and 60 (EU) Ex European private collection, acquired on the German art market before 2000.

**50**



**108** Three Medieval Bronze Rings with Glass Stone Circa 12th-14th century AD. The bezel with a coloured glass stone in a claw setting. Ring size 49-56 (EU) Ex European private collection, acquired on the German art market before 2000.

**50**



**109** Two Medieval/Early Modern Bronze Rings Circa 14th-17th century AD. Both with an offset bezel decorated with an ornamental design. Ring size 55, and 56 (EU) Ex European private collection, acquired on the German art market before 2000.

**70**



**110** Two Medieval/Early Modern Bronze Rings Circa 14th-17th century AD. Both with an offset bezel decorated with an ornamental design. Ring size 57, and 60 (EU) Ex European private collection, acquired on the German art market before 2000.

**70**



**111** Three Late Medieval Bronze Rings Circa 14th-15th century AD. A Fede ring with the bezel formed of two clasped hands, and two rings with offset bezel decorated with an ornamental design. Ring size 49-60 (EU) Ex European private collection, acquired on the German art market before 2000.

**50**



**112** Two Medieval/Early Modern Bronze Rings Circa 15th-16th century AD. A ring with oval bezel engraved with a Fleur-de-Lis, and a ring with offset oval bezel decorated with an ornamental design. Ring size 55, and 58 (EU) Ex European private collection, acquired on the German art market before 2000.

**70**



**113** Two Medieval Bronze Rings Circa 9th-12th century, and 15th century AD. A ring with ribbed shoulders and a projecting square bezel incised with a star, and a ring with offset oval bezel decorated with an ornamental design. Ring size 59, and 60 (EU) Ex European private collection, acquired on the German art market before 2000.

**50**



**114** Two Medieval/Early Modern Bronze Rings Circa 14th-17th century AD. Both with an offset bezel decorated with an ornamental design. Ring size 56, and 58 (EU) Ex European private collection, acquired on the German art market before 2000.

**70**



**115** Two Medieval/Early Modern Bronze Rings Circa 14th-17th century AD. Both with an offset bezel decorated with an incised design. Ring size 44, and 58 (EU) Ex European private collection, acquired on the German art market before 2000.

**50**



**116** Two Medieval/Early Modern Bronze Rings Circa 14th-17th century AD. Both with an offset bezel decorated with an ornamental design. Ring size 56, and 58 (EU) Ex European private collection, acquired on the German art market before 2000.

**50**



**117** A Medieval/Early Modern Silver Ring and a Bronze Ring Circa 15th-16th century AD. Both with decorated shoulders and an offset bezel with an ornamental design. Ring size 54, and 58 (EU) Ex European private collection, acquired on the German art market before 2000.

**70**



**118** Two Medieval/Early Modern Bronze Rings Circa 14th-17th century AD. Both with an offset bezel decorated with an ornamental design. Ring size 51, and 58 (EU) Ex European private collection, acquired on the German art market before 2000.

**50**



**119** A Roman Enamelled Ring and an Inscribed Byzantine Silver Ring Circa 2nd century, and 6th-7th century AD. A Roman bronze ring with an offset oval bezel decorated with blue and white enamel, and a Byzantine silver ring with offset circular bezel with a niello inscription. Ring size 49, and 54 (EU) Ex European private collection, acquired on the German art market before 2000.

**70**



**120** Two Medieval/Early Modern Bronze Rings Circa 13th-16th century AD. Two rings of different shape and design with incised/punched decoration. Ring size 52, and 53 (EU) Ex European private collection, acquired on the German art market before 2000.

**50**



**121** Two Medieval/Early Modern Bronze Rings Circa 14th-17th century AD. Two rings of different shape and design with incised decoration. Ring size 56, and 59 (EU) Ex European private collection, acquired on the German art market before 2000.

**70**



**122** Two Medieval/Early Modern Bronze Rings Circa 12th-16th century AD. Two rings of different shape and design with incised decoration. Hoop of the smaller ring slightly damaged. Ring size 40, and 57 (EU) Ex European private collection, acquired on the German art market before 2000.

**50**



**123** Two Medieval/Early Modern Bronze Rings Circa 14th-17th century AD. Two rings of different shape and design with incised decoration. Ring size 55, and 56 (EU) Ex European private collection, acquired on the German art market before 2000.

**50**



**124** Two Medieval/Early Modern Bronze Rings Circa 14th-17th century AD. Two rings of different shape and design with incised decoration. Ring size 49, and 53 (EU) Ex European private collection, acquired on the German art market before 2000.

**50**



**125** Two Medieval/Early Modern Bronze Rings Circa 14th-16th century AD. Two rings of different shape and design with incised decoration. One with a highly stylised human figure (?). Ring size 55, and 62 (EU) Ex European private collection, acquired on the German art market before 2000.

**70**



**126** Three Medieval/Early Modern Bronze Rings Circa 14th-16th century AD. Three rings of different shape and design with incised decoration. Ring size 48-59 (EU) Ex European private collection, acquired on the German art market before 2000.

**50**



**127** Three Medieval/Early Modern Bronze Rings Circa 14th-16th century AD. Three rings of different shape and design with incised decoration. Ring size 46-55 (EU) Ex European private collection, acquired on the German art market before 2000.

**50**



**128** Two Medieval/Early Modern Bronze Rings Circa 14th-16th century AD. Two rings of different shape and design with incised decoration. Ring size 53, and 58 (EU) Ex European private collection, acquired on the German art market before 2000.

**70**



**129** Two Medieval/Early Modern Bronze Rings Circa 14th-17th century AD. Both with an offset bezel decorated with an ornamental design. Ring size 55, and 58 (EU) Ex European private collection, acquired on the German art market before 2000.

**50**



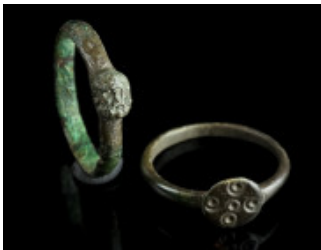
**130** Two Late Medieval Bronze Rings Circa 14th-15th century AD. One with a hexagonal bezel engraved with a stylised centaur, the other with an offset oval bezel with an ornamental design. Ring size 57 (EU) each Ex European private collection, acquired on the German art market before 2000.

**50**



**131** Two Medieval/Early Modern Bronze Rings Circa 14th-17th century AD. Two rings of different shape and design with incised/punched decoration. Ring size 51, and 56 (EU) Ex European private collection, acquired on the German art market before 2000.

**70**



**132** A Roman and a Byzantine Bronze Ring Circa 2nd-3rd century, and 6th-7th century AD. A Roman ring with the head of probably Hercules in three-quarter relief, and a Byzantine ring with circular bezel decorated with ring-and-dot. Ring size 53 (EU) each Ex European private collection, acquired on the German art market before 2000.

**50**



**133** Two Medieval/Early Modern Bronze Rings Circa 14th-16th century AD. Two rings of different shape and design with incised decoration. Ring size 55, and 62 (EU) Ex European private collection, acquired on the German art market before 2000.

**50**





**134** A Medieval and an Early Modern Bronze Ring Circa 12th-13th century, and 16th-17th century AD. A thin Medieval band ring with an oval bezel engraved with a stylised lion (somewhat bent and damaged), and an Early Modern ring with an offset bezel decorated with an ornamental design. Ring size 57, and 60 (EU) Ex European private collection, acquired on the German art market before 2000.

**70**



**135** Two Medieval Bronze Rings with Stylised Figures Circa 14th-15th century AD. One with square bezel engraved with a stylised griffin or pegasus (minor damage to hoop), the other with a highly stylised human (?) figure. Ring size 56, and 62 (EU) Ex European private collection, acquired on the German art market before 2000.

**70**



**136** Two Late Medieval/Early Modern Bronze Rings Circa 15th-17th century AD. Both with an offset bezel decorated with an ornamental design. Ring size 55, and 59 (EU) Ex European private collection, acquired on the German art market before 2000.

**50**



**137** Two Late Medieval/Early Modern Bronze Rings Circa 15th-17th century AD. Both with an offset bezel decorated with an ornamental design. Ring size 57, and 58 (EU) Ex European private collection, acquired on the German art market before 2000.

**50**



**138** Three Medieval/Early Modern Bronze Rings Circa 14th-16th century AD. Three rings of different shape and design with incised decoration. Ring size 53-63 (EU) Ex European private collection, acquired on the German art market before 2000.

**50**



**139** Two Medieval/Early Modern Rings Circa 14th-16th century AD. A Medieval silver ring with circular bezel and zig-zag decoration, and a Late Medieval/Early Modern ring with offset oval bezel with an ornamental design. Ring size 50, and 56 (EU) Ex European private collection, acquired on the German art market before 2000.

**70**



**140** Two Medieval/Early Modern Bronze Rings Circa 14th-17th century AD. Both with an offset bezel decorated with an ornamental design. Ring size 56, and 57 (EU) Ex European private collection, acquired on the German art market before 2000.

**50**



**141** A Byzantine Bronze Reliquary Cross with an Uncommon Saint Circa 10th-12th century AD. Reliquary cross (enkolpion) depicting on one side Virgin Mary with her hands upraised in prayer ('orans'), inscribed with the barred and ligate abbreviation MHP - ΘΥ (MHTHP ΘΕΟΥ - Mother of God); the other side features the partly abbreviated/ligate inscription Ο ΑΓΙΟC ΝΙΚΙΤΑC ('Saint Nikitas') and shows the uncommon saint with his hands upraised in prayer. Suspension loop not preserved. Cleaned and retoned. H 11 cm From the collection of an Austrian Art dealer. Acquired on the European Art Market from 1995 to present.

**280**



**142** An Inscribed Byzantine Bronze Reliquary Cross Circa 10th-12th century AD. Reliquary cross (enkolpion) depicting a nimbate, bearded saint wearing a long robe on the obverse (front half), the transverse arms are inscribed (somewhat blundered) 'Saint Nikolas' (NHKOΛOC) and 'Saint Blaise' (BΛOCHOC). The reverse (back half) features another robed religious figure, however, without beard and nimbus. The transverse arms carry the inscriptions 'Saint George' (ΓΕΟΡΓΗOC) and 'Saint Demetrius' (ΔΗΜΗΤΡΗOC). Worn; suspension loop missing. H 90 mm Ex private European collection, acquired on the German art market between 1998 and 2005.

**250**





**143** A Byzantine Bronze Reliquary Cross with Christ and Mary Circa 10th-12th century AD. Small reliquary cross (enkolpion) depicting Christ crucified with a cross above his head on one side, and Virgin Mary with her hands upraised in prayer ('orans') on the other. Suspension loop probably reattached. H 48 mm Ex European private collection, acquired on the German art market before 2000.

**80**



**144** A Byzantine Bronze Reliquary Cross with Christ and Mary Circa 10th-12th century AD. Reliquary cross (enkolpion) depicting Christ crucified on one side, and Virgin Mary with her hands upraised in prayer ('orans') on the other. Upper cross arm of one side broken and hinges damaged. H 61 mm From the estate of Ms. Johanna Raffler, Graz, acquired between 1980-2015. Purchased from James Murphy Coins & Antiquities.

**70**



**145** Two Byzantine Bronze Reliquary Crosses Circa 10th-12th century AD. One with Christ crucified and Virgin Mary 'orans'; lower hinge axe repaired, upper hinge axe and suspension loop missing. The other, a front half with Christ crucified, back half missing. H 50 mm, and H 48 mm Ex European private collection, acquired on the German art market before 2000.

**60**



**146** Three Byzantine Bronze Cross Pendants Circa 5th-7th or 9th-12th century AD. Three small, decorated cross pendants with suspension loop. H 28-37 mm Ex European private collection, acquired on the German art market before 2000.

**50**



**147** A Decorated Byzantine Silver Cross Circa 9th-12th century AD. Cross with decorative moulding and flared arms; the reverse plain and unworked. H 35 mm Ex European private collection, acquired on the German art market before 2000.

**80**



**148** Two Byzantine Bronze Cross Pendants Circa 5th-7th or 9th-12th century AD. Two small, decorated cross pendants. One suspension loop partly broken. H 25 mm, and H 26 mm Ex European private collection, acquired on the German art market before 2000.

**40**



**149** Three Byzantine Bronze Cross Pendants Circa 5th-7th or 9th-12th century AD. Two with five punched ring-and-dot motifs, symbolising the Five Wounds of Christ. The other with decorative moulding. H 24-33 mm Ex European private collection, acquired on the German art market before 2000.

**50**



**150** Two Byzantine Bronze Cross Pendants, and a Reliquary Cross Circa 5th-7th or 9th-12th century, and 10th-12th century AD. Two small, decorated cross pendants, and the front half of a small reliquary cross with Christ crucified. H 28-37 mm Ex European private collection, acquired on the German art market before 2000.

**80**



**151** Three Small Byzantine Bronze Crosses Circa 5th-7th or 9th-12th century AD. Two decorated cross pendants, and a cross with a small stud for attachment. H 27-34 mm Ex European private collection, acquired on the German art market before 2000.

**80**



**152** A Decorated Orthodox Silvered Bronze Cross Frame Circa 17th-18th century AD. Ornate silvered bronze frame with decorative arches, which enclosed a wooden crucifix (not preserved). H 53 mm Ex European private collection, acquired on the German art market before 2000.

**40**



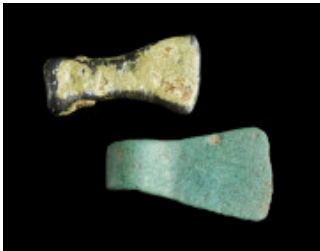
**153** A Fine Roman Bronze Hand Shaped Amulet Pendant Circa 2nd-3rd century AD. Well modelled small amulet pendant in the shape of a right hand; with suspension loop. H/L 27 mm Acquired on the European art market from 2010 to present.

**40**



**154** A Roman Bronze Bulla (Amulet Pendant) Circa 1st-3rd century AD. Hollow domed on either side, forming an internal compartment; with suspension loop. A bulla is a locket that especially Roman boys wore to protect them and ward off evil spirits until they reached adulthood. Inside the bulla were placed small amulets or fragments of sacred items, most often probably made of organic material and today lost. H 29 mm Ex European private collection, acquired on the German art market before 2000.

**30**



**155** Two Celto-Roman Axe Pendants Circa 1st century AD. One made of bronze, with suspension loop; the other lead, pierced for suspension, with remains of an iron wire. L 17 mm, and L 18 mm Ex European private collection, acquired on the German art market before 2000.

**30**



**156** A Roman Bronze Phallic Amulet Pendant Circa 2nd-3rd century AD. With a pointed tip representing the foreskin and an offset glans; a suspension loop at the top. These amulets (fascina) were thought to bring good luck and ward off evil spirits. Somewhat rough patina with earthen deposits. L 37 mm Ex private European collection, acquired on the German art market between 1998 and 2005.

**50**



**157** A Roman Bronze Lozenge-Shaped Enamelled Pendant Circa 2nd century AD. Lozenge-shaped plate with several enamelled cells, knob terminal, and suspension loop. H 46 mm Acquired on the European art market from 2010 to present.

**35**



**158** Two Religious Bronze Medal Pendants Circa 17th-18th century AD. One depicting Jesus Christ and Saint John; suspension loop missing. The other inscribed 1625 and depicting a shrine on one side, a religious scene with multiple figures on the other. H 25 mm, and H 23 mm Ex European private collection, acquired on the German art market before 2000.

**50**



**159** Four Religious Bronze Pendants/Plaques Circa 6th-18th century AD. Two Byzantine pendants with a cross, one circular, the other trapezoid. A fragmented, inscribed plaque with a saint and a cross; probably Late Byzantine. And an Early Modern fragmented cross pendant (?) with Christ crucified. H/L 18-26 mm Ex European private collection, acquired on the German art market before 2000.

**40**



**160** A Roman Bronze Wheel-Shaped Brooch Circa 1st-2nd century AD. Openwork disk brooch with remains of tinning. With hinged pin. Somewhat bent and damaged. Diameter 29 mm Ex European private collection, acquired between 1990 and 2005.

**40**



**161** A Late Roman Bronze Crossbow Brooch Circa 4th century AD. With arched bow and onion-shaped terminals ('Zwiebelknöpfe'). The top of the bow is decorated with a punched chevron pattern, the foot features punched ring-and-dot motifs and a carved design. Hinged, pin not belonging. L 70 mm Ex European private collection, acquired on the German art market before 2000.

**60**



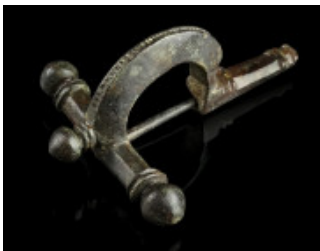
**162** A Roman Bronze Lion Brooch Circa 1st-2nd century AD. A fine bow brooch composed of two elaborately worked lion protomes; the foot features a Celtic-style head in relief. With hinged pin. Rare and in excellent condition! L 32 mm Ex Austrian art market. Acquired on the UK art market.

**200**



**163** A Roman Bronze Swastika Brooch Circa 2nd-3rd century AD. With four anti-clockwise rotation arms and notched edges; decorated with incised grooves. Hinged pin. L 26 mm Ex Austrian private collection, acquired in the 1980s-90s.

**60**



**164** A Late Roman Bronze Crossbow Brooch Circa 4th century AD. With arched bow and onion-shaped terminals ('Zwiebelknöpfe'). The top of the bow is decorated with a punched chevron pattern, the foot features a carved design. Hinged, pin probably not belonging. L 72 mm Ex European private collection, acquired on the German art market before 2000.

**60**



**165** An Early Roman Bronze Brooch Circa 1st century AD. Tinned bronze brooch with an intricate design and a semi-circular head plate with a small loop; notched edges. Hinged, pin missing. L 46 mm Ex Austrian private collection, acquired in the 1980s-90s.

**40**



**166** A Roman Bronze Equal-Ended Enamelled Brooch Circa late 1st-2nd century AD. Brooch with rectangular plate decorated with a series of small squares with red and blue enamel; remains of tinning. With hinged pin, part of pin missing. L 35 mm Ex Austrian private collection, acquired in the 1980s-90s.

**60**



**167** A Small Late Roman Bronze Crossbow Brooch Circa 4th century AD. With arched bow and onion-shaped terminals ('Zwiebelknöpfe'). The top of the bow is decorated with a punched pattern, the foot features a carved design. Hinged, pin somewhat short and possibly not belonging. Central knob probably reattached. L 46 mm Ex European private collection, acquired on the German art market before 2000.

**40**



**168** A Roman Bronze Stag Brooch Circa 2nd-3rd century AD. Brooch in the shape of a striding stag; catch plate and lug for the spring and pin to the reverse. L 40 mm From the estate of Ms. Johanna Raffler, Graz, acquired between 1980-2015.

**50**



**169** A Roman Lead Model for a Dolphin Brooch Circa 2nd century AD. Model in the shape of a stylised swimming dolphin. L 28 mm From the estate of Ms. Johanna Raffler, Graz, acquired between 1980-2015.

**50**



**170** A Roman Bronze Crossbow Brooch Circa late 3rd-early 4th century AD. With arched bow and faceted terminal knobs. The short foot features a carved design. Hinged pin. L 63 mm Ex European private collection, acquired on the German art market before 2000.

**40**





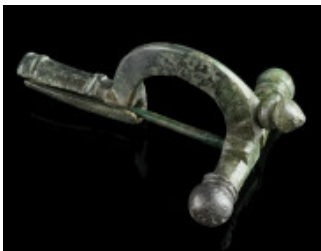
**171** A Roman Bronze Enamelled Plate Brooch Circa 2nd century AD. Brooch with an intricate openwork design and a series of peripheral lugs. The face of the brooch is decorated with enamel in different colours. With hinged pin. Surface treated with a thin layer of acrylic resin. L 38 mm, W 39 mm Ex Austrian private collection, acquired in the 1980s-90s.

**60**



**172** A Roman Bronze Enamelled Lion Brooch Circa 2nd century AD. Brooch in the shape of a lion, the body and eye decorated with enamel in different colours. The mane is indicated by a notched edge. Hinged, pin missing. L 40 mm Ex European private collection, acquired between 1990 and 2005.

**90**



**173** A Roman Bronze Crossbow Brooch Circa late 3rd-early 4th century AD. With arched bow and three terminal knobs. The foot features a carved design. Hinged pin. L 63 mm Ex European private collection, acquired on the German art market before 2000.

**80**



**174** A Roman Bronze Openwork Disk Brooch Circa 2nd-3rd century AD. With an openwork leaf-shaped design (ivy leaf). Hinged, pin ancient but probably not belonging. Diameter 33 mm Ex Austrian private collection, acquired on the European art market before 2000.

**60**



**175** A Large Roman Bronze Equal-Ended Brooch with Enamel Circa 2nd century AD. Equal-ended brooch with lozenge-shaped body and animal head terminals; with (remains of) an elaborate enamel decoration. Hinged, pin ancient but not belonging. L 59 mm Ex Austrian private collection, acquired on the European art market before 2000.

**80**



**176** A Late Roman Bronze Crossbow Brooch Circa 4th century AD. With arched bow and onion-shaped terminals ('Zwiebelknöpfe'). The top of the bow is decorated with a punched design, the foot features punched dot motifs and a carved design. With hinged pin (corroded). L 70 mm Ex Austrian private collection, acquired on the European art market before 2000.

**50**



**177** A Roman Bronze Anchor-Type Brooch with a Bird Circa 2nd-3rd century AD. Bow brooch with anchor-shaped head and a separately attached, riveted bird applique. With spring and pin (repaired). L 38 mm Ex Austrian private collection, acquired on the European art market before 2000.

**80**



**178** A Roman Bronze Kantharos Brooch Circa 2nd-3rd century AD. Openwork plate brooch in the shape of a stylised kantharos (drinking cup). With hinged pin. Part of catch plate not preserved. H 29 mm Ex Austrian private collection, acquired in the 1980s-90s.

**40**



**179** A Roman Bronze Openwork Disk Brooch Circa 2nd-3rd century AD. With an openwork design and a notched edge. Hinged, pin ancient but not belonging. Diameter 33 mm Ex Austrian private collection, acquired on the European art market before 2000.

**60**



**180** A Roman Bronze Enamelled Bow Brooch Circa late 1st-2nd century AD. Bow brooch with trapezoid bow and foot; richly embellished with red and blue/green enamel. Notched edges; remains of tinning. With hinged pin. L 34 mm Ex Austrian private collection, acquired on the European art market before 2000.

**80**





**181** A Roman Bronze Enamelled Disk Brooch Circa 2nd century AD. Circular disk brooch with six peripheral lungs and raised centre boss. The face of the brooch is decorated with enamel in different colours. Hinged, pin not belonging. Diameter 37 mm Ex Austrian private collection, acquired on the European art market before 2000.

**120**



**182** A Roman Bronze Openwork Trumpet Brooch Circa 2nd-3rd century AD. Plate brooch with a Romano- Celtic trumpet-style design. Spring and pin ancient but repaired. L 40 mm Ex Austrian private collection, acquired on the European art market before 2000.

**60**



**183** A Roman Bronze Equal-Ended Enamelled Brooch Circa 1st-2nd century AD. Richly decorated brooch with small fields inlaid with orange enamel. Hinged, pin ancient but not belonging. L 32 mm Ex Austrian private collection, acquired on the European art market before 2000.

**60**



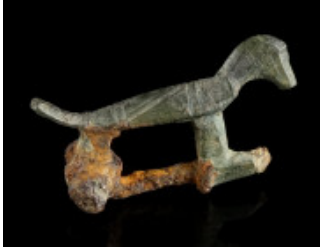
**184** A Roman Silver Openwork Trumpet Brooch Circa 2nd-3rd century AD. Fine and nicely toned plate brooch with a complex Romano-Celtic trumpet-style design. The hinged pin is loose but certainly belongs. Minor deposits. L 36 mm Ex European private collection, acquired on the art market between circa 2000-2018.

**250**



**185** A Roman Bronze Disk Brooch with a Swastika and a Fitting Circa 2nd-3rd century AD. Both originally enamelled. The brooch with a lug for the spring and pin and remains of the catch plate to the reverse; the fitting with a stud for attachment. Both somewhat damaged and worn. Diameter 36 mm, and 33 mm Acquired on the European art market from 2010 to present.

**40**



**186** A Late Antique Bronze Bird Brooch Circa 4th-6th century AD. Bird with folded wings, the body decorated with incised lines. With spring and pin made of iron. L 32 mm From the inventory of an Austrian art dealer, acquired on the European art market.

**30**



**187** A Byzantine Bronze Brooch with Bent Foot Circa 5th-6th century AD. Bow brooch with folded foot (umgeschlagenem Fuß) and punched decoration; the foot adorned with a cross. Spring damaged, iron pin missing. L 61 mm Ex European private collection, acquired on the German art market before 2000.

**30**



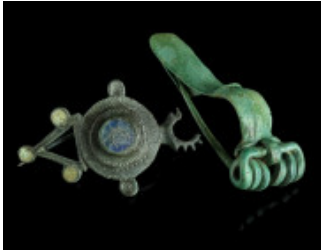
**188** A Late Antique/Early Byzantine Silver Brooch with a Boar Circa 4th-6th century AD. The arched bow terminates towards the head plate in the head of a boar with glass-inlaid eyes. The circular head plate is adorned with an incised cross framed by a dotted border. Three terminal knobs. Remains of gilding; some pitting. Foot partly broken. Spring damaged, pin missing. L 47 mm Ex European private collection, acquired between 1990 and 2005.

**70**



**189** A Graeco-Thracian and Two Iron Age/Eastern Celtic Bow Brooches Circa 8th-7th century, and 4th-3rd century BC. A Graeco-Thracian bronze brooch with central bulb; pin and part of catch plate missing. And two Thracian Type/La Tène Type bronze brooches with knob/disk terminal; pins (partly) missing. L 25-64 mm Ex European private collection, acquired on the German art market before 2000.

**50**



**190** A Roman Bronze Composite Brooch and a Bronze Eye-Type Brooch Circa 2nd century, and 1st century AD. A Roman composite enamelled plate brooch with an intricate design; hinged pin, small part broken and somewhat bent. And a Roman/Germanic 'eye' brooch with spring and pin. L 45 mm, and L 55 mm Ex European private collection, acquired on the German art market before 2000.

**50**



**191** Three Early Roman Bronze Brooches Circa 1st century AD. An Aucissa-Type brooch with hinged pin. And two Hod-Hill-Type brooches; hinged, pins missing. L 46-52 mm Ex European private collection, acquired on the German art market before 2000.

**50**



**192** Three Roman Bronze Brooches Circa 2nd-3rd century AD. A knee brooch, an anchor-type brooch, and a bow brooch. All with hinged pin; the knee brooch only preserves the metal core of the corroded pin. L 39-44 mm Ex European private collection, acquired on the German art market before 2000.

**60**



**193** Three Roman Bronze Brooches Circa 1st-3rd century AD. A strongly profiled brooch, a bow brooch with crossbar, and a 'knob-bow' brooch ('Bügelknopffibel'). With spring and pin or hinged pin; one pin missing. L 47-67 mm Ex European private collection, acquired on the German art market before 2000.

**60**



**194** Three Roman Bronze Knee Brooches Circa 2nd-3rd century AD. One with faceted bow and triangular head plate, the other with small semicircular head plate and short crossbar, the third with pelta-shaped head plate. With spring and pin or hinged pin; one pin missing. L 31-41 mm Ex European private collection, acquired on the German art market before 2000.

**60**



**195** Two Celtic Bronze Brooches from the Middle La Tene Period Circa 3rd-2nd century BC. Two fragmented brooches with the foot bent upwards and attached to the bow. Originally with spring and pin. Somewhat corroded and with earthen deposits. One brooch with remains of glue and paper on the surface. L 40 mm (each) From the estate of Ms. Johanna Raffler, Graz, acquired between 1980-2015.

**30**



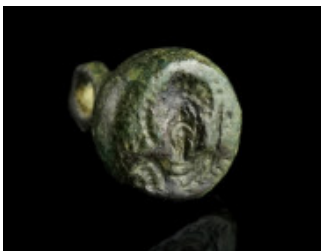
**196** A Byzantine Bronze Bread Stamp Circa 5th-7th century AD. With an abbreviated Greek inscription and a strap loop with a ring at the back. L 46 mm From the collection of an Austrian Art dealer. Acquired on the European Art Market from 1995 to present.

**90**



**197** A Byzantine Bronze Stamp Seal with a Hare Circa 10th-12th century AD. Seal matrix depicting a hare; with suspension loop. H 16 mm, Diameter 11 mm Ex European private collection, acquired on the German art market before 2000.

**40**



**198** A Byzantine Bronze Stamp Seal with a Military Saint Circa 10th-12th century AD. Domed seal matrix depicting a nimbate, cuirassed, and draped bust of a bearded saint with spear; with suspension loop. H 18 mm, Diameter 12 mm Ex European private collection, acquired on the German art market before 2000.

**50**



**199** A Group of Five Roman Lead Seals with Figures Circa 1st-4th century AD. Five seals with various figures. For example, four (imperial?) busts, a head of Silenus, a seated figure, etc. Length/Diameter 20-24 mm From the estate of Ms. Johanna Raffler, Graz, acquired between 1980-2015.

**50**



**200** Two Modern Lead (Cloth) Seals Circa 18th-19th century AD. One with the coat of arms of Austria-Hungary (double-headed eagle), the other with letters only (?). Diameter 21 mm, and 18 mm From the estate of Ms. Johanna Raffler, Graz, acquired between 1980-2015.

**30**



**201** A Fine Roman Bronze Oil Lamp with Crescent Circa 1st-3rd century AD. Bronze oil lamp with round body and extended spout upon a raised foot; a crescent at the rear above the loop handle. Complete with lid and remains of the chains for hanging. Cleaned and surface somewhat retoned. L 84 mm, H 46 mm Ex Austrian private collection, acquired in the 1980s-90s.

**180**



**202** A Roman Bronze Key Ring Circa 1st-3rd century AD. With a projecting heart-shaped openwork key bit; the rectangular bezel and the bit with notched decoration. Outer diameter 20 mm; L 20 mm Ex European private collection, acquired on the German art market before 2000.

**50**



**203** A Roman Bronze Key Ring Circa 1st-3rd century AD. With a projecting square openwork key bit; the rectangular bezel and the bit with notched decoration. Outer diameter 22 mm; L 24 mm Acquired on the UK art market before 2021. Ex old European private collection.

**60**



**204** A Roman Bronze Key Ring Circa 1st-3rd century AD. Ring with a projecting tubular shank and an offset key bit; notched decoration. Outer diameter 21 mm; L 25 mm Acquired on the UK art market before 2021. Ex old European private collection.

**60**



**205** Two Roman Bronze Key Rings Circa 1st-3rd century AD. Both with a short projecting shank and an offset key bit; with notched decoration. Outer diameter 21 mm; L 19 mm (each) Ex European private collection, acquired on the German art market before 2000.

**50**



**206** Three Roman Bronze Key Rings Circa 1st-3rd century AD. All with a short projecting shank and an offset key bit. Outer diameter 18-24 mm; L 28-31 mm (each) Ex European private collection, acquired on the German art market before 2000.

**50**



**207** A Small Medieval Gothic Iron Key Circa 15th century AD. With a flat rhombic bow, short shank, and an offset key bit. L 59 mm Acquired on the European art market.

**40**



**208** A Roman Bronze Rectangular Lock Plate Circa 1st-4th century AD. Lock plate from a chest-lock, decorated with concentric circles. With several small holes to fasten the plate to the chest and cover the lock mechanism. In the centre, a rectangular keyhole and to the side another rectangular hole for the loop of the hasp. L 64 x 56 mm Ex European private collection, acquired on the German art market before 2000.

**40**



**209** A Roman and a Byzantine Bronze Figural Padlock Circa 2nd-4th century, and 9th-12th century AD. A front part of a Roman padlock in the shape of a stylised face. And half a Byzantine padlock in the shape of an animal, decorated with ring-and-dot motifs and notches. H 32 mm, and L 41 mm Ex European private collection, acquired on the German art market before 2000.

**80**





**210** Three Roman Bronze Chest-Lock Bolts Circa 1st-3rd century AD. The holes would have matched up to the teeth of a key, allowing to release the bolt and slide it. L 69-82 mm Ex European private collection, acquired on the German art market before 2000.

**30**



**211** Three Roman Bronze Chest-Lock Bolts Circa 1st-3rd century AD. The holes would have matched up to the teeth of a key, allowing to release the bolt and slide it. L 62-75 mm Ex European private collection, acquired on the German art market before 2000.

**30**



**212** Three Roman Bronze Openwork Belt Fittings Circa 2nd-3rd century AD. Two openwork fittings with stylised horse heads, and a further fitting. Most of the studs and two washers for fixing to a belt are still preserved. H 39-45 mm Ex European private collection, acquired on the German art market before 2000.

**50**



**213** Two Byzantine Bronze Belt Buckles with a Lion Circa 9th-11th century AD. Rectangular plates of belt buckles with a stylised lion striding to left; with attachment lugs and part of the frame and prong of one example preserved. L 39 mm, and L 47 mm Ex European private collection, acquired on the German art market before 2000.

**70**



**214** Two Roman Bronze Heart-Shaped and Two Propellor-Type Fittings Circa 2nd-3rd century, and 4th-5th century AD. Two heart-shaped belt fittings with fungiform studs on the reverse. And two propellor-type belt fittings with rivet holes; one lavishly decorated with punched ring-and-dot motifs and crescents. L 38-77 mm Ex European private collection, acquired on the German art market before 2000.

**60**





**215** A Roman Bronze Openwork Belt Buckle Plate from a Military Belt Circa 2nd century AD. Buckle plate from a military belt (cingulum militiae) with an intricate openwork design and four fungiform studs for attachment on the reverse. L 55 mm Ex European private collection, acquired between 1990 and 2005.

**40**



**216** Two Byzantine Bronze Belt Buckles with Stylised Animals Circa 9th-11th century AD. Rectangular plates of belt buckles with highly stylised animals (a lion and a griffin?) striding to left; with attachment lugs. L 29 mm, and L 37 mm Ex European private collection, acquired on the German art market before 2000.

**70**



**217** A Late Antique Bronze Belt Buckle with Stylised Dolphins Circa 5th-6th century AD. Buckle with triangular openwork plate and two stylised dolphins; three rivets for attachment. Cleaned and probably partly repatinated. L 69 mm Ex European private collection, acquired on the German art market before 2000.

**50**



**218** Two Early Byzantine Bronze Belt Fittings Circa 6th-7th century AD. Openwork belt fittings with attachment lugs on the reverse. L 22 mm, and L 32 mm Ex European private collection, acquired on the German art market before 2000.

**30**



**219** Three Roman Bronze Belt Fittings in the Shape of a Dolphin Circa 2nd-3rd century AD. Belt fittings in the shape of a stylised swimming dolphin. With two holes for attachment each (one lug broken); some of the studs/rivets still preserved. Earthen deposits. L 42-56 mm From the estate of Ms. Johanna Raffler, Graz, acquired between 1980-2015.

**50**



**220** Two Fragmented Roman Silver Fittings Circa 2nd-3rd century AD. A broken openwork fitting with one stud on the reverse still preserved, and a partly molten fitting in the shape of an animal (?). L 31 mm, and L 34 mm From the estate of Ms. Johanna Raffler, Graz, acquired between 1980-2015.

**30**



**221** A Fine Late Roman Bronze Amphora-Shaped Strap-End Circa 4th century AD. Elaborately decorated strap-end in the shape of a two-handled amphora from a Late Roman military belt. Adorned with ring-and-dot motifs and zigzag patterns; two rivets for fixing to the belt still in place. L 62 mm From the collection of an Austrian Art dealer. Acquired on the European Art Market from 1995 to present.

**80**



**222** A Fine Early Medieval Silver Buckle Circa 5th century AD. Small migration period silver buckle with oval plate decorated with a zigzag pattern; two rivets for fixing to a strap still in place. L 22 mm Ex European private collection, acquired on the German art market before 2000.

**60**



**223** Two Roman Bronze Enamelled (Belt) Fittings Circa 2nd-3rd century AD. The face of the fittings is decorated with enamel in different colours. One with two T-shaped lugs (partly broken) on the reverse, the other with two studs. Enamel damaged. Diameter 28 mm, and L 41 mm Acquired on the European art market from 2010 to present.

**40**



**224** Two Roman Bronze Enamelled Disks Circa 2nd century AD. Circular fittings/mounts decorated with enamel in different colours. Both with notched edge. One with stud/rivet with washer on the reverse, the other plain. Enamel damaged. Diameter 34 mm, and 39 mm Acquired on the European art market from 2010 to present.

**40**



**225** Three Circular Roman Bronze Studs/Mounts Circa 1st-2nd century AD. One decorated with a wave scroll, the other with raised concentric circles. The third plain. Diameter 15-27 mm Ex European private collection, acquired on the German art market before 2000.

**40**



**226** Three Byzantine Bronze Coin Weights Circa 5th-7th century AD. Square or rectangular Nomisma weights, engraved N, two with pellets. L 11-15 mm; 2.10-4.41 g Ex European private collection, acquired on the German art market before 2000.

**50**



**227** Three Byzantine Bronze Coin Weights Circa 5th-7th century AD. Square or rectangular Nomisma weights, engraved N, two with (decorative) pellets. L 13-14 mm; 4.33-4.48 g Ex European private collection, acquired on the German art market before 2000.

**50**



**228** Three Byzantine Bronze Commercial or Coin Weights Circa 5th-7th century AD. A square, a rectangular, and a circular commercial weight, all inscribed IB (2 Scripula). Length/Diameter 9-12 mm; 1.95-2.26 g Ex European private collection, acquired on the German art market before 2000.

**50**



**229** Three Byzantine Bronze Coin Weights Circa 5th-7th century AD. A square and a rectangular Nomisma weight, engraved N, one with decorative pellets. And a small square weight inscribed H (1 1/3 Scripula). L 10-14 mm; 1.38-4.37 g Ex European private collection, acquired on the German art market before 2000.

**50**



**230** Three Byzantine Bronze Coin Weights Circa 5th-7th century AD. A square and a rectangular Nomisma weight, engraved N, both with (decorative) pellets. And a square two Nomismata weight, originally inlaid NB (B illegible/corroded). L 12-15 mm; 4.12-7.58 g Ex European private collection, acquired on the German art market before 2000.

**50**



**231** Three Byzantine Bronze Coin Weights Circa 5th-7th century AD. Square or rectangular Nomisma weights, engraved N, two with (decorative) pellets. L 12-14 mm; 3.71-5.16 g Ex European private collection, acquired on the German art market before 2000.

**50**



**232** Three Byzantine Bronze Coin Weights and an Early Modern Weight Circa 5th-7th century, and probably 17th-19th century AD. Three square Nomisma weights, inscribed N, all with pellets. And an Early Modern commercial weight. L 12-14 mm; 2.85-6.01 g Ex European private collection, acquired on the German art market before 2000.

**40**



**233** A Byzantine Bronze Spherical Weight and Two Square Weights Circa 5th-7th century AD. An inscribed spherical commercial weight. And two square coin (?) weights; one inscribed H (1 1/3 Scripula), the other with six pellets. Diameter 14 mm; L 9-10 mm; 1.21-13.35 g Ex European private collection, acquired on the German art market before 2000.

**30**



**234** An Islamic Bronze Square Weight Circa 8th-13th century AD. Square weight with notched and punched decoration. L 15 x 16 mm; 4.22 g Ex European private collection, acquired on the German art market before 2000.

**30**



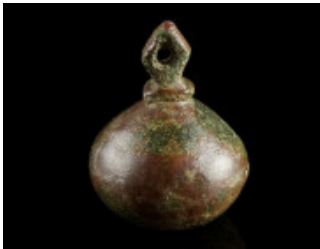
**235** A Group of Five Islamic Bronze Weights Circa 8th-13th century AD. Square or rectangular weights with punched ring-and-dot motifs. Two pierced for suspension. L 8-14 mm; 2.76-5.83 g Ex European private collection, acquired on the German art market before 2000.

**50**



**236** A Group of Five Islamic Bronze Weights Circa 8th-13th century AD. Square or rectangular weights with punched ring-and-dot motifs. L 9-13 mm; 2.85-5.80 g Ex European private collection, acquired on the German art market before 2000.

**50**



**237** A Byzantine Bronze Spherical Steelyard Weight Circa 5th-7th century AD. Spherical commercial weight with suspension loop. Two ounces. H 31 mm, Diameter 25 mm; 54.71 g Ex European private collection, acquired on the German art market before 2000.

**40**



**238** A Group of Four Byzantine or Islamic/Medieval Bronze Weights Circa 5th-13th century AD. Square or rectangular weights, all punched or incised. L 9-14 mm; 2.39-6.27 g Ex European private collection, acquired on the German art market before 2000.

**50**



**239** A Group of Five Islamic Bronze Weights Circa 8th-13th century AD. Square or rectangular weights with punched ring-and-dot motifs. Two pierced for suspension. L 11-13 mm; 3.99-5.84 g Ex European private collection, acquired on the German art market before 2000.

**50**



**240** A Roman Pale Yellow-Green Glass Flask Circa 2nd-3rd century AD. Flask with pear-shaped body, cylindrical neck, and flared mouth with thickened rim. The body is decorated with a series of wheel-cut bands. The surface is slightly weathered with an attractive silvery iridescence. H 18 cm Ex Austrian private collection Hofrat Dr. A. O., 1920-1994.

**250**



**241** A Roman Pale Blue-Green Glass Double Balsamarium Circa 4th century AD. Double-flask balsamarium with two handles attached to the rim; the body decorated with applied spiral glass trailing (partly missing). H 12 cm From the collection of a retired antique dealer, North Devon, UK.

**340**



**242** A Roman Pale Blue-Green Glass Double Balsamarium Circa 4th century AD. Double-flask balsamarium with two dark blue-green handles applied to the sides; arching basket handle on top broken. The body decorated with applied glass trailing. With some iridescence and a few earthen deposits. H 12.3 cm From the estate of Ms. Johanna Raffler, Graz, acquired between 1980-2015.

**100**



**243** A Byzantine Glass Bracelet with Birds and a Further Plain Bracelet Circa 9th-12th century, and 5th-7th century AD. A translucent blue glass and silver stain bracelet decorated with birds and ornamental patterns. Three repaired breaks, with minor restoration. For a close parallel see: The Metropolitan Museum New York, inv. no. 67.185. And a further, plain bracelet made of translucent dark blue glass. Diameter 78 mm, and 72 mm Ex European private collection, acquired between 1990 and 2005.

**40**





**244** A Late Antique Glass Pendant with a Lion Circa 4th-5th century AD. A stamped, roughly circular yellow-green glass pendant depicting a lion striding left; in field above, crescent moon and star. Suspension loop broken. Diameter 19 mm (max.) From the estate of Ms. Johanna Raffler, Graz, acquired between 1980-2015.

**30**



**245** A Pair of Late Antique/Early Byzantine Tweezers Circa 4th-7th century AD. Cosmetic tweezers decorated with ring-and-dot motifs. One break at the top, some deposits. L 87 mm Ex European private collection, acquired between 1990 and 2005.

**40**



**246** An Early Modern Bronze and Iron Folding Knife Circa 16th-18th century AD. Pocket knife with decorated bronze handle and an iron blade stowed within. Iron corroded. L 96 mm Ex European private collection, acquired between 1990 and 2005.

**50**



**247** A Germanic/Early Medieval Bone Comb Circa 5th-7th century AD. Part of the handle of a bone comb, the face richly decorated with ring-and-dot motifs, linear grooves, and a notched edge. Four holes with two iron rivets still in place. L 10.1 cm From the collection of an Austrian Art dealer. Acquired on the European Art Market from 1995 to present.

**70**



**248** A Pair of Ottoman/Islamic Bronze Tweezers Circa 16th-18th century AD. Cosmetic tweezers decorated with a series of grooves and notches to the edge. Cleaned and patina stripped. L 65 mm Acquired on the European art market from 2010 to present.

**35**





**249** A Roman Bronze and Iron Knife with Panther Handle Circa 2nd-3rd century AD. Knife with slim iron blade and a bronze handle terminating in the head of a panther. Corroded. Blade slightly damaged and possibly not belonging. L 16.8 cm Ex European private collection, acquired on the German art market before 2000.

**120**



**250** Three Early Byzantine Bronze Bells and a Silver Bell Circa 5th-7th century AD. Three small bronze bells; one with the suspension loop still preserved. And a small silver bell with suspension loop. Diameter 17-25 mm Ex European private collection, acquired on the German art market before 2000.

**40**



**251** A Roman Bronze Military Diploma Fragment Issued AD 109-113/114. The present diploma fragment is evidence for a previously unknown constitution issued by Trajan for the troops in Moesia Superior between AD 109 and 113/114. The diploma was issued under the provincial governor T. Prifernius Paetus Settidianus Firmus to an unknown auxiliary soldier following twenty-five years of service, awarding to him Roman citizenship. The fragment of tabella I mentions some of the military units and the provincial governor: [... E]T I LVSITAN[OR ET ...] [... ]VM C R ET I[...] [...] ET II]II RAETO[R ET ...] [...] V]M ET F[LAVIA ET SVNT IN MOESIA] [SVPERIORE SVB T P]RIFE[RNIO PAETO SETTIDIANO FIR] [MO ...]. To be published in ZPE. H 24 mm, L 25 mm From the collection of an Austrian Art dealer. Acquired on the European Art Market from 1995 to present.

**100**



**252** A Roman Bronze Military Diploma Fragment Circa 2nd century AD. Small fragment of a military diploma, awarding Roman citizenship to an unknown auxiliary soldier. H 26 mm, L 24 mm From the collection of an Austrian Art dealer. Acquired on the European Art Market from 1995 to present.

**60**



**253** A Greek Decorated Lead Sling Shot Inscribed ΔΕΣΑΙ Circa 4th-3rd century BC. Almond shaped sling bullet with a thunderbolt on one side and inscribed ΔΕΣΑΙ on the other. The thunderbolt alludes to Zeus throwing his lightning bolts. L 29 mm Ex European private collection, acquired between 1990 and 2005.

**40**



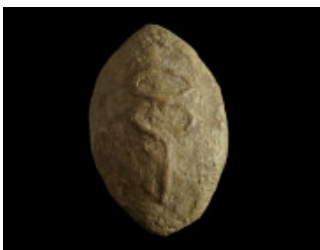
**254** A Greek Decorated Lead Sling Shot Inscribed BABYPTA Circa 4th century BC. Almond shaped sling bullet with a spearhead on one side and inscribed BABYPTA on the other. BABYPTA is the genitive case of the Greek name Babyrtas, meaning 'of Babyrtas'. Babyrtas was probably a Greek military commander, whose sling bullets were for example found in Kamiros and Miletos. These sling bullets can possibly be connected with the siege of Rhodes (305-304 BC) by Demetrios Poliorketes and with the campaigns of Antigonos Monophthalmos in Western Asia Minor shortly before. L 30 mm Ex European private collection, acquired between 1990 and 2005.

**40**



**255** A Greek Decorated Lead Sling Shot Inscribed CTPATΩ Circa 4th-3rd century BC. Almond shaped sling bullet with a coiled snake on one side and inscribed CTPATΩ on the other. Στρατός in Ancient Greek would mean 'army'. The C-like shape of the Σ developed already in the 4th century BC. L 29 mm Ex European private collection, acquired between 1990 and 2005.

**40**



**256** A Greek Decorated Lead Sling Shot Inscribed TYX Circa 4th-3rd century BC. Almond shaped sling bullet with a kerykeion (herald's staff) on one side and inscribed TYX (and a further letter?) on the other. L 30 mm Ex European private collection, acquired between 1990 and 2005.

**40**



**257** A Greek Decorated Lead Sling Shot Inscribed KAAA Circa 4th-3rd century BC. Almond shaped sling bullet with a bee on one side and inscribed KAAA on the other. L 30 mm Ex European private collection, acquired between 1990 and 2005.

**40**



**258** A Greek Decorated Lead Sling Shot Inscribed CTPATΩ Circa 4th-3rd century BC. Almond shaped sling bullet with a coiled snake on one side and inscribed CTPATΩ (and possibly a further letter before?) on the other. Στρατός in Ancient Greek would mean 'army'. The C-like shape of the Σ developed already in the 4th century BC. L 29 mm Ex European private collection, acquired between 1990 and 2005.

**40**



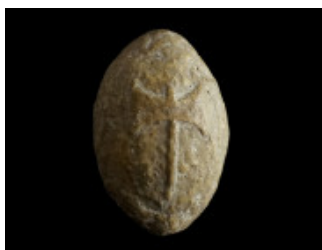
**259** A Greek Decorated Lead Sling Shot Inscribed ΠΑΡΩΙΔΑ Circa 4th-3rd century BC. Almond shaped sling bullet with a bee on one side and inscribed ΠΑΡΩΙΔΑ on the other. L 32 mm Ex European private collection, acquired between 1990 and 2005.

**40**



**260** A Greek Decorated and Inscribed Lead Sling Shot of Perdikkas Circa 4th century BC. Almond shaped sling bullet with a club on one side and inscribed ΠΑΡΔΙΚΚΑ (the A instead of the E is by mistake as the name 'Pardikkas' is unknown and difficult to imagine) on the other. ΠΕΡΔΙΚΚΑ is the genitive case of the Greek name, meaning 'of Perdikkas', possibly Alexander the Great's famous general and his successors. L 32 mm Ex European private collection, acquired between 1990 and 2005.

**40**



**261** A Greek Decorated Lead Sling Shot Inscribed ΤΕΙΣΕΑ Circa 4th-3rd century BC. Almond shaped sling bullet with a double axe on one side and inscribed ΤΕΙΣΕΑ on the other. L 28 mm Ex European private collection, acquired between 1990 and 2005.

**40**



**262** A Greek Decorated Lead Sling Shot Circa 4th-3rd century BC. Almond shaped sling bullet with a bee on one side, the other side either plain or with an illegible inscription. L 31 mm Ex European private collection, acquired between 1990 and 2005.

**40**



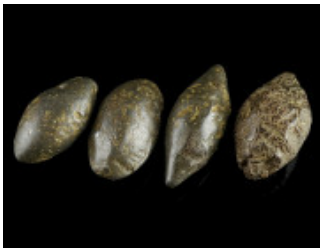
**263** A Greek Decorated and Inscribed Lead Sling Shot Circa 4th-3rd century BC. Almond shaped sling bullet with a spearhead on one side. The other side features an illegible inscription with multiple small letters, probably starting with an Π. L 31 mm Ex European private collection, acquired between 1990 and 2005.

**40**



**264** A Greek Decorated Lead Sling Shot Circa 4th-3rd century BC. Almond shaped sling bullet with a spearhead one side, the other side either plain or with an illegible inscription. L 29 mm Ex European private collection, acquired between 1990 and 2005.

**40**



**265** A Group of Four Greek/Roman Lead Sling Shots Circa 3rd century BC - 1st century AD. Almond shaped sling bullets of different size. Minor damage. L 27-34 mm Ex European private collection, acquired on the German art market before 2000.

**50**



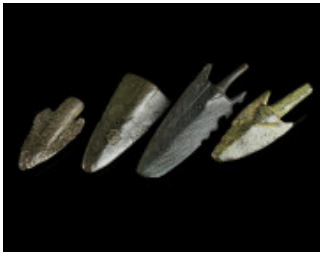
**266** A Late Bronze Age Arrowhead Circa 1200-800 BC. Winged bronze arrowhead with tang. L 50 mm From the collection of an Austrian Art dealer. Acquired on the European Art Market from 1995 to present.

**35**



**267** A Late Bronze Age Arrowhead Circa 1200-800 BC. Winged bronze arrowhead with socket. L 38 mm From the collection of an Austrian Art dealer. Acquired on the European Art Market from 1995 to present.

**35**



**268** A Group of Four Bronze Arrowheads from the Greek World Circa 8th-4th century BC. Different shapes and designs; with socket or tang. L 31-53 mm Ex European private collection, acquired on the German art market before 2000.

**40**



**269** A Group of Three Medieval Iron Arrowheads Circa 9th-13th century AD. Two socketed arrowheads, and one with tang. L 55-93 mm Acquired on the UK art market before 2021. Ex old European private collection.

**40**



**270** Three Medieval Iron Crossbow Bolts Circa 14th-15th century AD. Socketed crossbow bolts with four-sided head. L 76-94 mm Acquired on the UK art market before 2021. Ex old European private collection.

**50**



**271** Three Medieval Iron Crossbow Bolts Circa 14th-15th century AD. Socketed crossbow bolts with four-sided head. L 77-90 mm Acquired on the UK art market before 2021. Ex old European private collection.

**50**



**272** Three Medieval Iron Crossbow Bolts Circa 14th-15th century AD. Socketed crossbow bolts with four-sided head. L 58-75 mm  
Acquired on the UK art market before 2021. Ex old European private collection.

**50**



**273** Three Medieval Iron Crossbow Bolts Circa 14th-15th century AD. Socketed crossbow bolts with four-sided head. L 66-81 mm  
Acquired on the UK art market before 2021. Ex old European private collection.

**50**



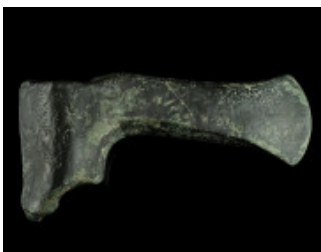
**274** Four Lead Coated Flints from Flintlocks Circa 17th-early 19th century. Four lead coated flints from firearms that used a flint-striking ignition mechanism. L 32-36 mm  
Ex European private collection, acquired on the German art market before 2000.

**80**



**275** An Early Bronze Age Shaft-Hole Axe Head Circa 2200-1600 BC. A solid cast copper alloy axe head ('Schaftlochaxt'). L 16 cm  
Ex European private collection, acquired on the German art market before 2000.

**100**



**276** An Early Bronze Age Shaft-Hole Axe Head Circa 2200-1600 BC. A solid cast copper alloy axe head ('Schaftlochaxt'). L 13.5 cm  
Ex European private collection, acquired on the German art market before 2000.

**100**





**277** A European Middle Bronze Age Palstave Axe Head Circa 1600-1300 BC. Bronze Palstave axe head ('Absatzbeil') with wide blade; the flanges rise from the butt to the stop. L 12.7 cm Ex Austrian private collection, acquired in the 1980s-90s.

**80**



**278** A European Late Bronze Age Socketed Axe Head Circa 1000-800 BC. Socketed and looped bronze axe head with double-banded collar and gently faceted body. Beautiful blue-green patina. L 11.2 cm Acquired on the UK art market before 2021. Ex old European private collection.

**180**



**279** A European Late Bronze Age Socketed Axe Head Circa 1000-800 BC. Socketed bronze axe head with moulded collar and flared blade. L 10.5 cm Acquired on the UK art market before 2021. Ex old European private collection.

**130**



**280** A European Late Bronze Age Socketed Axe Head Circa 1000-800 BC. Small socketed and looped bronze axe head with triple-banded collar and ribbed decoration. Minor chip to one edge of blade. L 57 mm Acquired on the UK art market before 2021. Ex old European private collection.

**90**



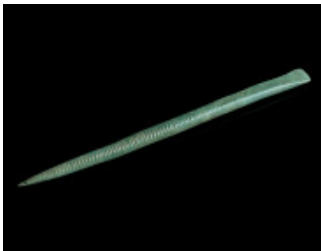
**281** A European Late Bronze Age Socketed Chisel Circa 1000-800 BC. Socketed bronze chisel with moulded collar and narrow blade. L 68 mm Acquired on the UK art market before 2021. Ex old European private collection.

**60**



**282** A European Late Bronze Age Socketed Chisel Circa 1000-800 BC. Small socketed bronze chisel with moulded collar, ribbed decoration, and narrow blade. L 54 mm Acquired on the UK art market before 2021. Ex old European private collection.

**60**



**283** A European Late Bronze Age Decorated Tool Circa 1000-800 BC. Bronze tool with a narrow blade on one side and a pointed end on the other; the shaft decorated with an incised linear design. L 10.1 cm Acquired on the UK art market before 2021. Ex old European private collection.

**80**



**284** A European Late Bronze Age Spear Head Circa 1200-800 BC. Socketed bronze spear head with short, leaf-shaped blade. The shaft tapers through the length of the spear head to the point. A hole on either side of the socket for fixing. Minor casting flaw. L 91 mm From the collection of an Austrian Art dealer. Acquired on the European Art Market from 1995 to present.

**80**



**285** A European Late Bronze Age Double Spiral Pendant Circa 1200-800 BC. Composed of two coils of bronze rod connected by a suspension loop. Very minor damage and modern scratches to patina. L 56 mm, H 34 mm Acquired on the UK art market before 2021. Ex old European private collection.

**120**



**286** A European Late Bronze Ages Sickel Blade ('Knopfsichel') Circa 1200-800 BC. Bronze sickle blade with two raised ribs to the outside of the curve and a knob for attachment of the handle at one end; with one flat face. Minor chip to tip of blade. L 12 cm Acquired on the UK art market before 2021. Ex old European private collection.

**120**



**287** A European Late Bronze Ages Sickle Blade ('Knopfsichel') Circa 1200-800 BC. Bronze sickle blade with two raised ribs to the outside of the curve and a knob for attachment of the handle at one end; with one flat face. L 13.6 cm Acquired on the UK art market before 2021. Ex old European private collection.

**120**



**288** A Small European Late Bronze Age Bracelet Circa 1000-800 BC. Very small bronze bracelet with a beautiful green patina. A few spots with corrosion. Diameter 49 mm Acquired on the UK art market before 2021. Ex old European private collection.

**50**



**289** A European Late Bronze Age Bracelet Circa 1000-800 BC. Bronze bracelet with incised linear decoration and a beautiful dark green patina. Diameter 10.1 cm From the collection of an Austrian Art dealer. Acquired on the European Art Market from 1995 to present.

**50**



**290** A European Late Bronze Age Bracelet Circa 1000-800 BC. Plain bronze bracelet with a beautiful dark green patina. Diameter 10.1 cm From the collection of an Austrian Art dealer. Acquired on the European Art Market from 1995 to present.

**50**



**291** A European Late Bronze Age Twisted Bracelet Circa 1000-800 BC. Twisted bronze bracelet with tapered ends. Worn; some deposits and minor corrosion. Diameter 76 mm Acquired on the UK art market before 2021. Ex old European private collection.

**50**



**292** A European Late Bronze Age Decorated Bracelet Circa 1000-800 BC. Bronze bracelet with fine incised linear decoration. Dark green patina with some spots of corrosion. Diameter 10.2 cm From the collection of an Austrian Art dealer. Acquired on the European Art Market from 1995 to present.

**50**



**293** A European Late Bronze Age Bracelet Circa 1000-800 BC. Bronze bracelet with tapered ends; some deposits. Diameter 90 mm Acquired on the UK art market before 2021. Ex old European private collection.

**50**



**294** Two European Late Bronze Age Bracelets Circa 1000-800 BC. Two bronze bracelets. One with some corrosion, the other with chipped edges and earthen deposits. Diameter 82 mm, and 76 mm From the estate of Ms. Johanna Raffler, Graz, acquired between 1980-2015.

**50**



**295** A European Late Bronze Age Twisted Torque Circa 1000-800 BC. Twisted hoop of solid bronze with plain tapering ends. Somewhat bent and a crack at one terminal; surface corroded. Diameter 16.8 cm From the estate of Ms. Johanna Raffler, Graz, acquired between 1980-2015.

**50**



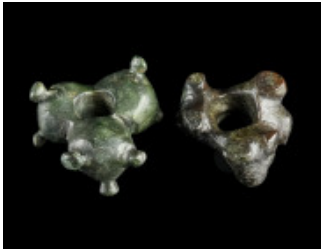
**296** A Pair of Decorated Ancient Bronze Bracelets Circa 4th-3rd century BC. A pair of originally fully tinned or silvered bracelets made from sheet metal. Decorated with a punched and incised design. The ends reminiscent of animal head terminals. Diameter 70 mm (each) Ex European private collection, acquired between 1990 and 2005.

**80**



**297** A Decorated Celtic Bronze Bracelet Circa 3rd-2nd century BC. A finely detailed bronze bracelet with ribbed decoration. Diameter 63 mm Ex European private collection, acquired on the German art market before 2000.

**30**



**298** Two Celtic Bronze Knobbed Rings Circa 3rd-1st century BC. Two small, knobbed rings with several knobs each. Diameter 16 mm, and 19 mm Ex European private collection, acquired on the German art market before 2000.

**50**



**299** Three Iron Age/Celtic Bronze Objects Circa 7th-1st century BC. A small figure of a ram, a small rectangular buckle, and a knobbed ring with three large knobs. Length/Diameter 23-58 mm Ex European private collection, acquired on the German art market before 2000.

**80**



**300** A Small Romano-Celtic Silver Ring Circa 1st century AD. With overlapping ends secured with two spiral twists. Diameter 18 mm Ex Austrian private collection, acquired in the 1980s-90s.

**30**



**301** A Late Antique/Early Byzantine Decorated Bronze Bracelet Circa 5th-7th century AD. Bracelet with punched ring-and-dot motifs and notched decoration. Diameter 59 mm Ex European private collection, acquired between 1990 and 2005.

**40**



**302** Two Romano-Celtic Silver Rings Circa 1st century AD. With overlapping ends secured with two spiral twists. Somewhat bent and damaged. Diameter 43 mm, and 44 mm Ex European private collection, acquired between 1990 and 2005.

**80**



**303** A Byzantine Bronze Casting Mould for a Cross Pendant Circa 9th-12th century AD. Reusable mould for casting cross pendants; the reverse with notched edges. H 29 mm From the collection of an Austrian Art dealer. Acquired on the European Art Market from 1995 to present.

**70**



**304** A Greek or Roman Silver Handle from a Bowl Circa 4th century BC-1st century AD. Small decorated handle from a bowl. Surface partly corroded and with some deposits. H 31 mm, W 47 mm Ex European private collection, acquired on the German art market before 2000.

**150**



**305** A Late Antique/Early Byzantine Decorated Bronze Bracelet Circa 5th-7th century AD. Bracelet with punched ring-and-dot motifs and notched/carved decoration. Some deposits. Diameter 65 mm Ex European private collection, acquired between 1990 and 2005.

**40**





**306** Two Venetian Lead Theriac Capsule Seal Covers Circa 17th century AD. Two lids from Theriac boxes. One from the Due Mori pharmacy, depicting confronted busts of two moors surrounded by the legend THERIACA FINA ALI DVE MORI VEN. The other from the Alla Testa d'Oro pharmacy, depicting a laureate and draped bust right; before, a small winged lion; surrounded by the legend THERIACA F ALLA TESTA DORO IN VENET; all within a floral wreath. Diameter 24 mm, and diameter 44 mm Ex European private collection, acquired on the German art market before 2000.

**40**



**307** A Roman Lead Votive Mirror Circa 3rd-4th century AD. Small circular lead mirror with decorated frame; glass in the centre not preserved. Diameter 57 mm Ex European private collection, acquired on the German art market before 2000.

**30**



**308** A Roman Lead Votive Mirror Circa 3rd-4th century AD. With decorated frame (ornaments and birds) and handle; the centre recessed for glass (not preserved). Slightly bent; part of handle missing. H 46 mm, Diameter 35 mm From the collection of an Austrian Art dealer. Acquired on the European Art Market from 1995 to present.

**40**



**309** Four Greek Lead Ring Bezels with Figures Circa 4th-3rd century BC. Four almond-shaped bezels depicting horses, and a horse and rider. Somewhat bent with minor damage. L 21-22 mm Ex European private collection, acquired on the German art market before 2000.

**40**



**310** A Group of Four Roman Bronze Rings and a Glass Intaglio Circa 1st-3rd century AD. A ring with a lion, a gilt ring with a damaged carnelian intaglio, an enamelled ring, a small, decorated ring, and a blue glass intaglio with a seated figure (?). Most pieces damaged or broken. Length/Diameter 10-24 mm From the estate of Ms. Johanna Raffler, Graz, acquired between 1980-2015.

**40**



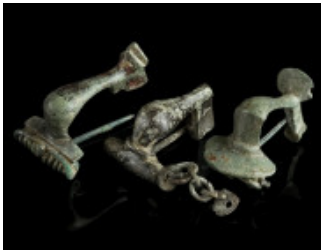
**311** A Byzantine Lead Model for a Ring Circa 6th-8th century AD. Lead ring model with circular domed bezel; three pellets on either side on the shoulders. Ring size 60 (EU) From the inventory of an Austrian art dealer, acquired on the European art market.

**20**



**312** A Roman Bronze Strap Decoration and a Silver Pendant Circa 2nd-3rd century AD. A navette-shaped strap decoration, and a leaf-shaped silver pendant decorated with ring-and-dot motifs and a zigzag pattern (tremolo). Suspension loop of the pendant missing. L 64 mm, and H 33 mm (pendant) Ex Austrian private collection, acquired in the 1980s-90s.

**30**



**313** Three Roman Bronze Knee Brooches Circa 2nd-3rd century AD. One with semicircular head plate, the other with rectangular headplate; both with spring and pin. The third brooch with small semicircular head plate, crossbar, and hinged pin; a chain attached to the axis bar. L 34-41 mm Ex Austrian private collection, acquired in the 1980s-90s.

**45**



**314** A Group of Five Roman Bronze Brooches Circa 1st-3rd century AD. Two strongly profiled brooches with spring (pin missing), and three hinged knee brooches of different shape, all without pin. L 30-60 mm Ex Austrian private collection, acquired in the 1980s-90s.

**40**



**315** Three Roman Bronze Plate Brooches Circa 2nd-3rd century AD. A pelta-shaped brooch, a Tutulus brooch, and a brooch with 'swirling spiral' design. All hinged, two pins missing; minor damage. Diameter/Length 31-39 mm Ex Austrian private collection, acquired in the 1980s-90s.

**40**



**316** A North African Palaeolithic Stone Handaxe Western Sahara, Late Acheulean, circa 250,000-200,000 BC. Pointed handaxe of classic tear drop form with a glossy desert patination; some abrasion of the surface due to exposure to desert winds and a chip to the edge on one side. L 11.5 cm From the inventory of an Austrian art dealer, acquired on the European art market.

**50**



**317** A Southeast European Neolithic Polychrome Ceramic Bowl Circa 6th millennium BC. Small bowl decorated with a geometric pattern. Red and black paint. Some earthen deposits. H 40 mm, Diameter 75 mm Ex European private collection, acquired on the German art market before 2000.

**50**



**318** A Lid of a Greek Apulian Globular Red-Figure Pyxis Circa 2nd half of 4th century BC. The hemispherical lid has a pomegranate-shaped knob and an inset rim. It is decorated with the head of a woman in profile wearing a sakkos on one side, and a palmette on the other. Handwritten collector's mark on the inside. H 75 mm, Diameter 92 mm Ex private collection Prof. Zweymüller, Vienna. Sold at Christie's London 1975. Before, Nostell Priory Collection, Yorkshire. Acquired by Charles Winn, 8th Baronet of Nostell, from Naples in 1819 and sailed for England on 9th February 1819.

**250**



**319** Three Hellenistic Greek Alabastra Circa 3rd-2nd century BC. Carved from alabaster. Damaged and worn. H 8.9-10.6 cm From the estate of Ms. Johanna Raffler, Graz, acquired between 1980-2015.

**50**



**320** A Small Modern Marble Statuette of Eros After the Antique, probably 20th century AD. Statuette of Eros with mantle; drapery behind. Loosely mounted on a wooden base. H 90 mm (without base) From the estate of Ms. Johanna Raffler, Graz, acquired between 1980-2015.

**150**



**321** A Small Modern Marble Head of a Youth After the Antique, probably 20th century AD. Head of a youth with long hair. Mounted on a wooden base. H 40 mm (head) From the estate of Ms. Johanna Raffler, Graz, acquired between 1980-2015.

**50**



**322** A Modern Plaster Cast of a Roman Relief Circa 20th century AD. Paster cast of a marble relief featuring a lion hunting a deer. With a small metal loop on the back for hanging. L 22.5 cm, H 16.5 cm From the estate of Ms. Johanna Raffler, Graz, acquired between 1980-2015.

**50**